

Scioto Ridge Transmission Line

McDonald and Taylor Creek
Townships, Hardin County

Figure 04-1: Geography
and Topography

December 2013

- 50 ft Topographic Contour
- 10 ft Topographic Contour
- Public Road
- Preferred Route Pole Location
- Preferred Transmission Route
- Alternate Transmission Route
- Permanent Access Road
- East Lima-Marysville 345 kV Line
- Substation
- 1,000 ft Study Area
- Delineated Stream/Wetland
- Stream, River, or Lake
- Town Boundary
- County Boundary

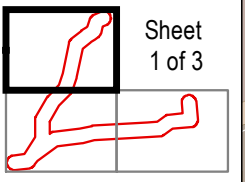
- Notes:**
1. Basemap: ESRI StreetMap North America, 2012.
 2. Proposed Facility shapefiles provided by Applicant. Delineated streams and wetlands provided by Cardno ENTRIX.
 3. Soil series derived from NRCS Soil Survey Geographic Database. Topographic contours generated from USGS digital elevation model.
 4. No air transportation facilities, cities, or villages occur within the Study Area.
 5. The collector substation is part of a separate Certificate Application, Case No. 13-1177-EL-BGN.

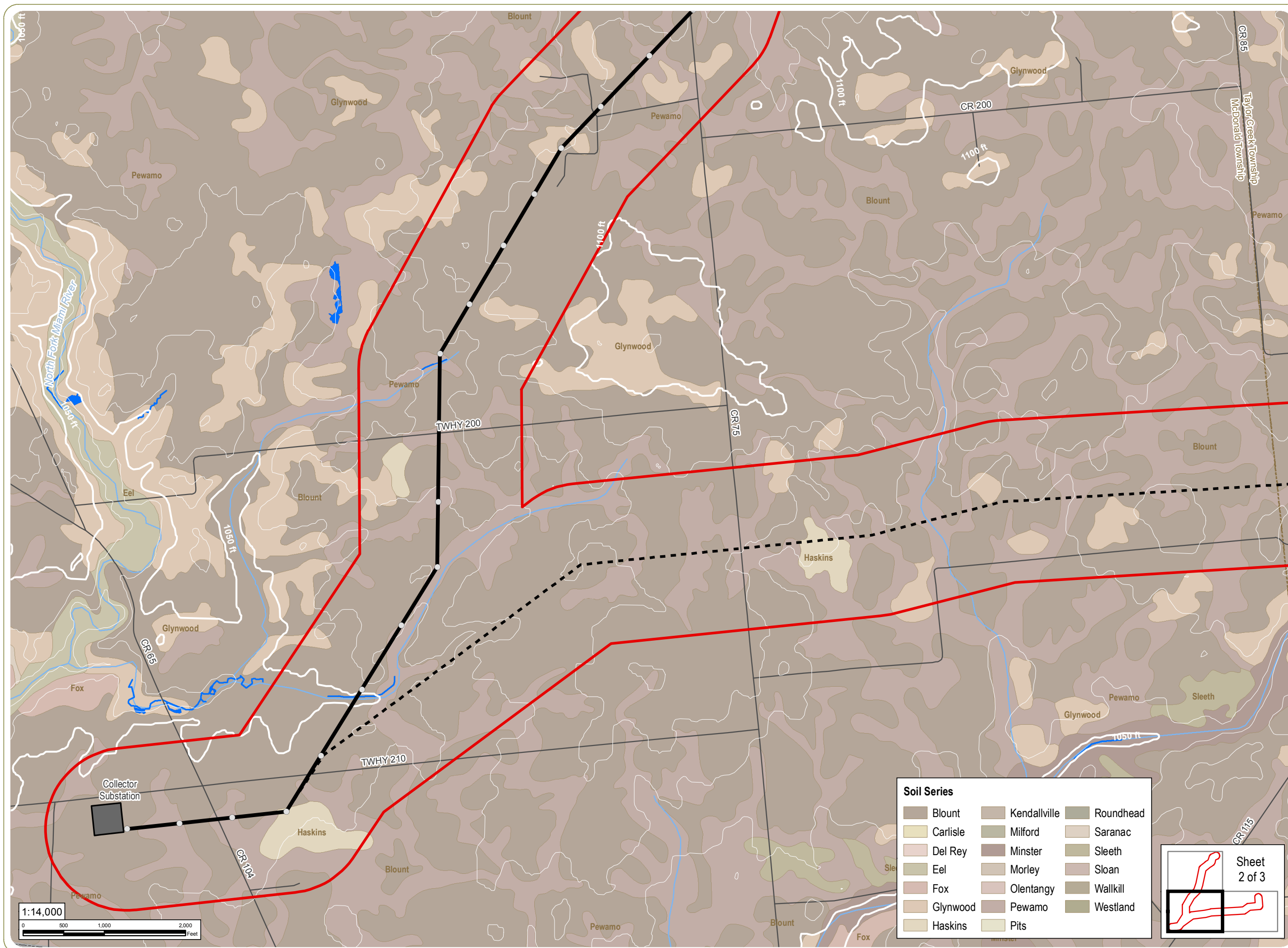
everpower



www.edrcompanies.com

Soil Series		
Blount	Kendallville	Roundhead
Carlisle	Milford	Saranac
Del Rey	Minster	Sleeth
Eel	Morley	Sloan
Fox	Olentangy	Wallkill
Glynwood	Pewamo	Westland
Haskins	Pits	





Scioto Ridge Transmission Line

McDonald and Taylor Creek
Townships, Hardin County

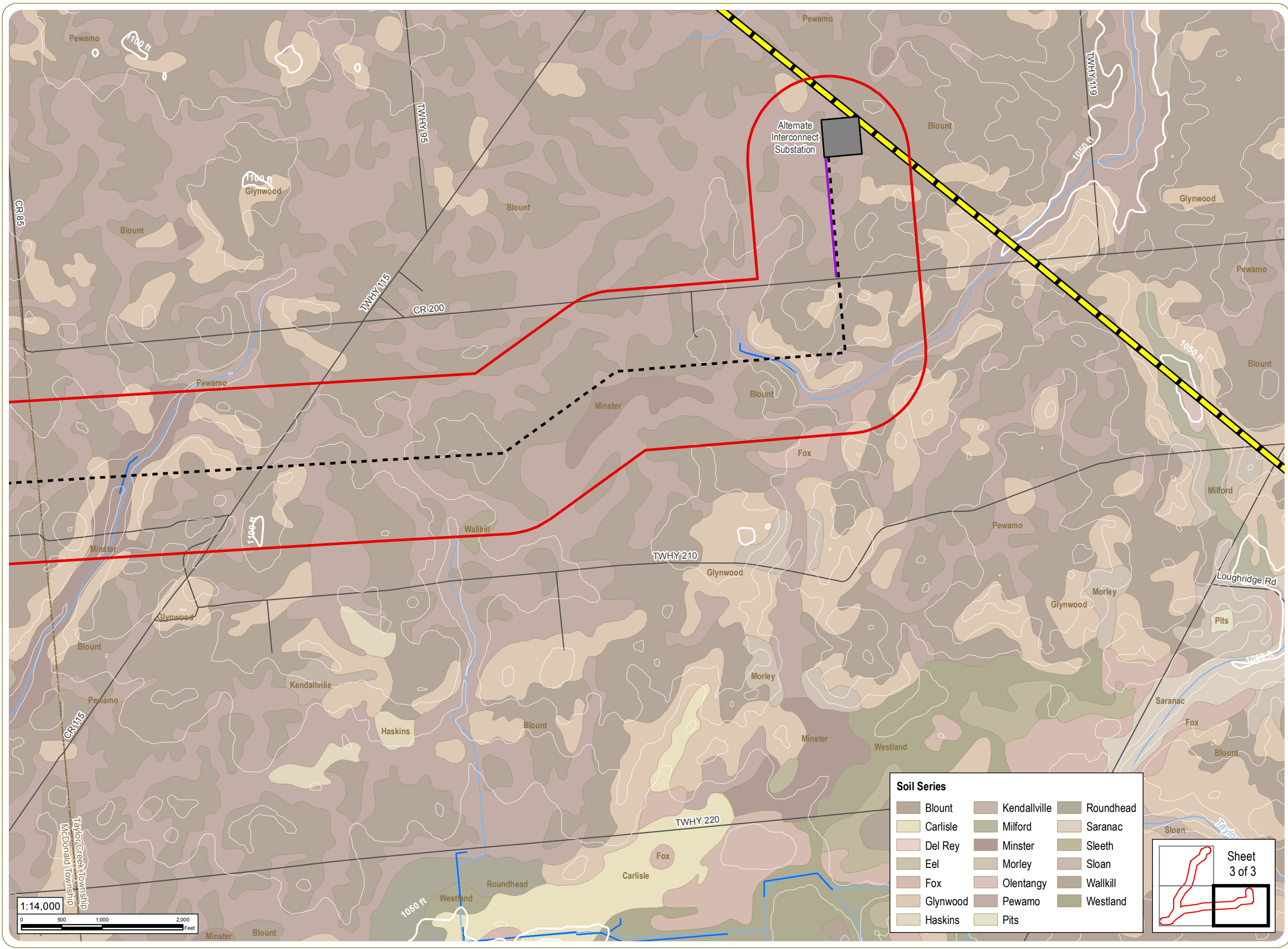
**Figure 04-1: Geography
and Topography**

December 2013

- 50 ft Topographic Contour
- 10 ft Topographic Contour
- Public Road
- Preferred Route Pole Location
- Preferred Transmission Route
- Alternate Transmission Route
- Permanent Access Road
- East Lima-Marysville 345 kV Line
- Substation
- 1,000 ft Study Area
- Delineated Stream/Wetland
- Stream, River, or Lake
- Town Boundary
- County Boundary

- Notes:**
1. Basemap: ESRI StreetMap North America, 2012.
 2. Proposed Facility shapefiles provided by Applicant. Delineated streams and wetlands provided by Cardno ENTRIX.
 3. Soil series derived from NRCS Soil Survey Geographic Database. Topographic contours generated from USGS digital elevation model.
 4. No air transportation facilities, cities, or villages occur within the Study Area.
 5. The collector substation is part of a separate Certificate Application, Case No. 13-1177-EL-BGN.

everpower



Scioto Ridge Transmission Line

McDonald and Taylor Creek
Townships, Hardin County

Figure 04-1: Geography
and Topography

December 2013

- 50 ft Topographic Contour
- 10 ft Topographic Contour
- Public Road
- Preferred Route Pole Location
- Preferred Transmission Route
- Alternate Transmission Route
- Permanent Access Road
- East Lima-Marysville 345 kV Line
- Substation
- 1,000 ft Study Area
- Delineated Stream/Wetland
- Stream, River, or Lake
- Town Boundary
- County Boundary

- Notes:**
1. Basemap: ESRI StreetMap North America, 2012.
 2. Proposed Facility shapefiles provided by Applicant. Delineated streams and wetlands provided by Cardno ENTRIX.
 3. Soil series derived from NRCS Soil Survey Geographic Database. Topographic contours generated from USGS digital elevation model.
 4. No air transportation facilities, cities, or villages occur within the Study Area.
 5. The collector substation is part of a separate Certificate Application, Case No. 13-1177-EL-BGN.

everpower



This foregoing document was electronically filed with the Public Utilities

Commission of Ohio Docketing Information System on

12/16/2013 1:49:32 PM

in

Case No(s). 13-1177-EL-BGN, 13-1767-EL-BSB, 13-1768-EL-BTX

Summary: Notice Regarding Shift in Preferred Transmission Line Route (Part 4/8, Figure 04-1) electronically filed by Mr. Michael J. Settineri on behalf of Hardin Wind LLC