



COLUMBUS | CLEVELAND  
CINCINNATI-DAYTON  
MARIETTA

**BRICKER & ECKLER LLP**  
100 South Third Street  
Columbus, OH 43215-4291  
MAIN: 614.227.2300  
FAX: 614.227.2390

www.bricker.com  
info@bricker.com

**Sally W. Bloomfield**  
614.227.2368  
sbloomfield@bricker.com

November 18, 2013

*Via Electronic Filing*

Ms. Betty McCauley  
Administration/Docketing  
Ohio Power Siting Board  
180 East Broad Street, 11<sup>th</sup> Floor  
Columbus, Ohio 43215-3793

**Re: Vectren Energy Delivery of Ohio, Inc.  
Case No. 13-1651-GA-BTX**

Dear Ms. McCauley:

On November 15, 2013, Vectren Energy Delivery of Ohio, Inc. ("Vectren") filed an Amended Application in the above referenced docket. The Amended Application included Figures 4-6 and 7-2 which depict field delineated wetlands and streams.

Attached are copies of updated maps for Figures 4-6 and 7-2 to the Amended Application that show the updated field delineated wetlands and streams from the ecological study conducted on November 14, 2013.

Please do not hesitate to contact me if you have any questions.

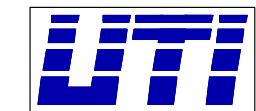
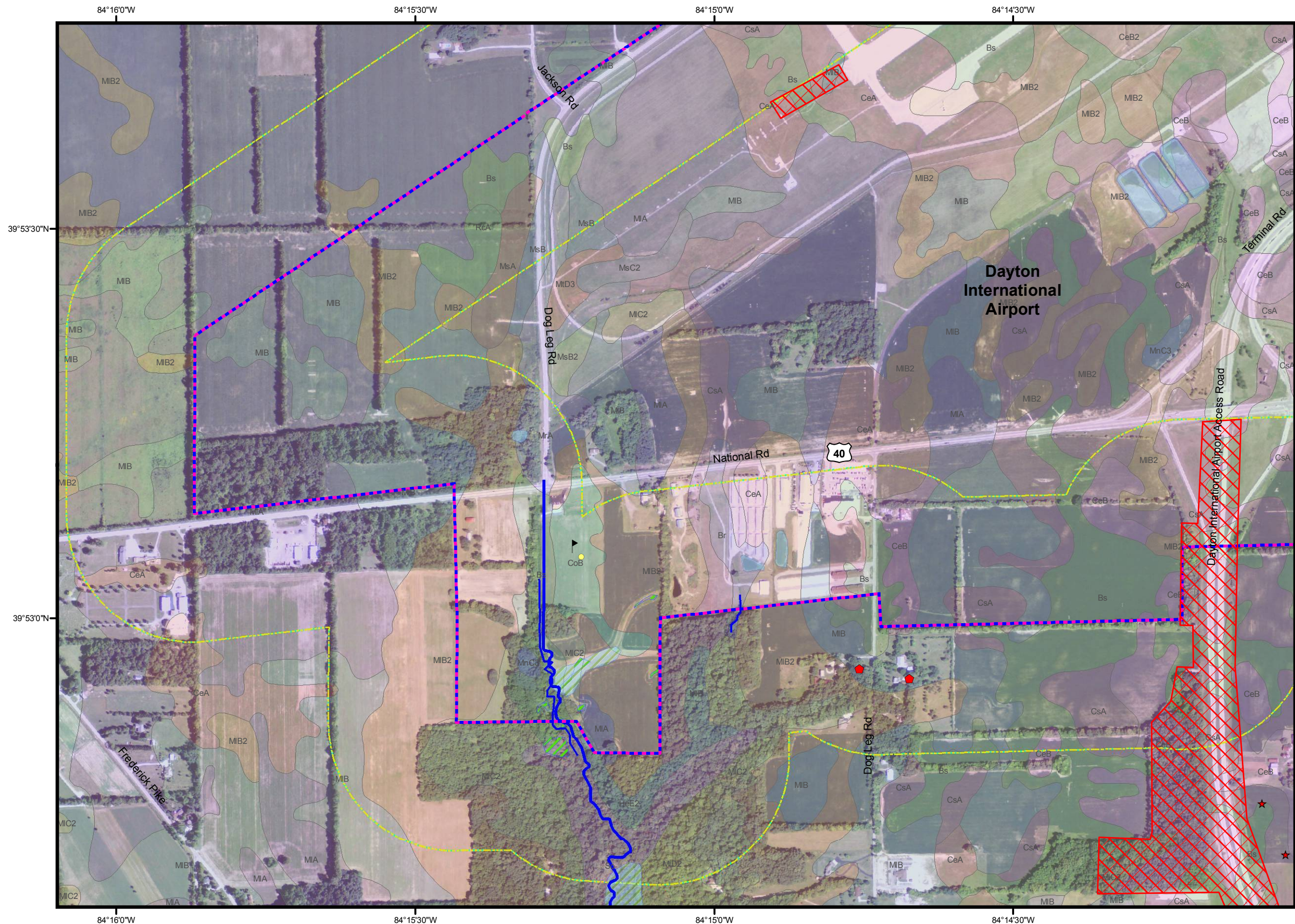
Sincerely,

Sally W. Bloomfield

Attachment

Cc: Ed Steele (w/Attachment)  
Parties of Record (w/Attachment)





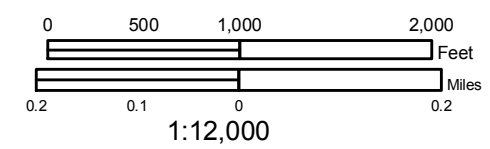
Utility Technologies International  
4700 Homer Ohio Lane  
Groveport, OH 43125  
(614) 482-8080



Z-167 Proposed Route Relocation

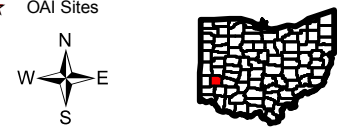
Geographic Map  
Figure 4-6

Revised 11/18/13  
Updated Field Delineated Wetlands  
and  
Field Delineated Streams

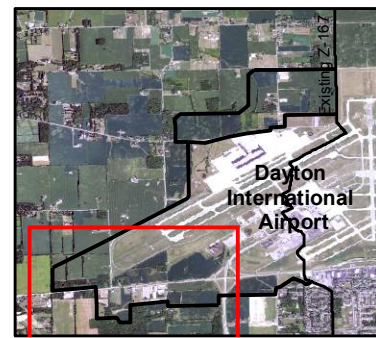


Legend

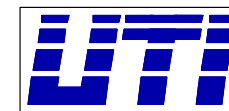
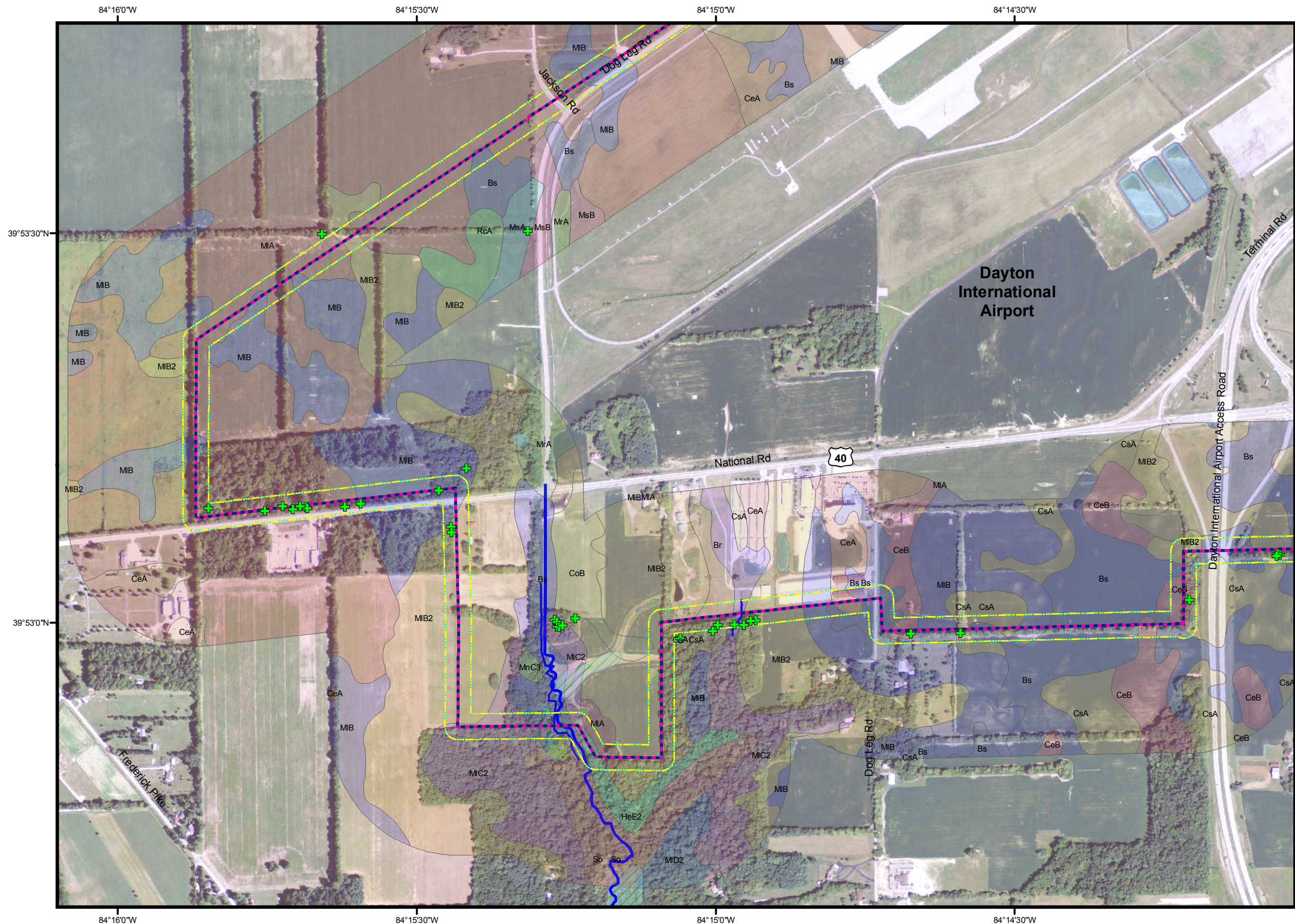
- Point of Interest**
- Airport
  - Airport Tower
  - Church
  - Driving Range
  - Cemetery
  - Park
  - Parking
  - Pitch
  - School
  - Soccer
  - Phase I Study Areas
  - OHI Structures
  - OAI Sites
- Legend**
- Preferred Route
  - Alternate Route
  - Common Segment
  - Existing Z-167 Line
  - High Consequence Area
  - Streams
  - Field Delineated Streams
  - Wetlands
  - Freshwater Pond
  - Field Delineated Wetlands
  - Stormwater Basin
  - NonJurisdictional Conveyances
  - 2000' Corridor Preferred Route
  - 2000' Corridor Alternate Route
  - Soils



Site Reference Map







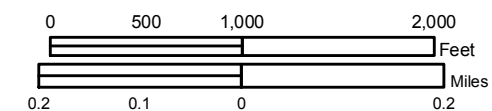
Utility Technologies International  
4700 Homer Ohio Lane  
Groveport, OH 43125  
(614) 482-8080



Z-167 Proposed Route Relocation

### Ecological Map Figure 7-2

Revised 11/18/13  
Updated Field Delineated Wetlands  
and  
Field Delineated Streams



### Legend

- + Bat Tree
- - - Preferred Route
- - - Alternate Route
- - - Common Shared Segment
- - - 200' Corridor - Preferred Route
- - - 200' Corridor - Alternate Route
- - - Existing Z-167 Line
- - - Streams
- - - Field Delineated Streams
- - - Wetlands
- - - Freshwater Pond
- - - Field Delineated Wetlands
- - - Stormwater Basin
- - - Non-Jurisdictional Conveyances
- - - Soils 200' Corridor



### Site Reference Map





**This foregoing document was electronically filed with the Public Utilities**

**Commission of Ohio Docketing Information System on**

**11/18/2013 2:39:38 PM**

**in**

**Case No(s). 13-1651-GA-BTX**

Summary: Correspondence of Vectren Energy Delivery of Ohio, Inc. Transmitting Updated Figures 4-6 and 7-2 to the Amended Application electronically filed by Teresa Orahod on behalf of Sally Bloomfield