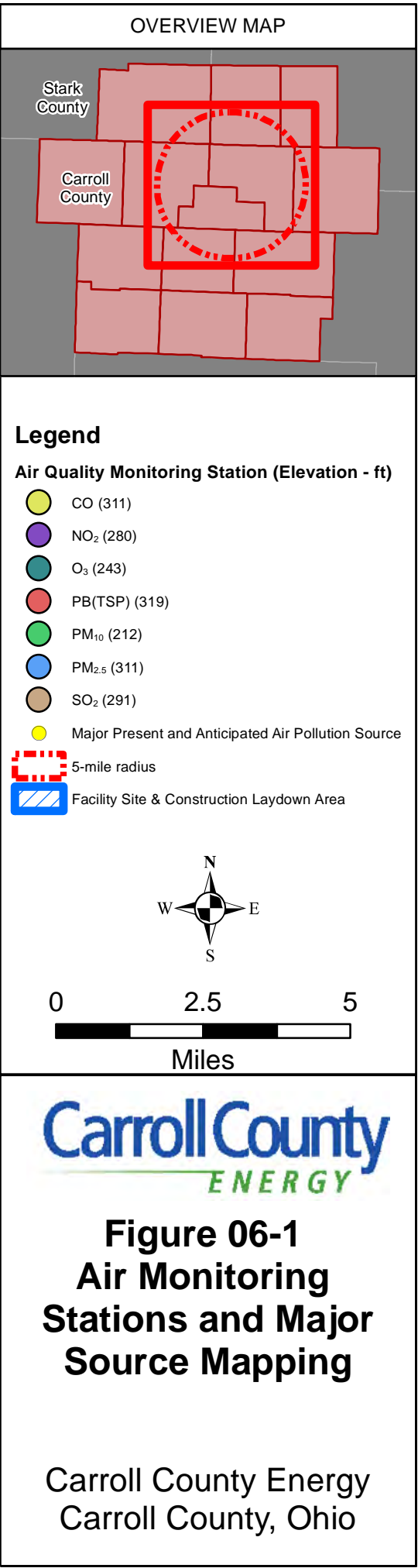
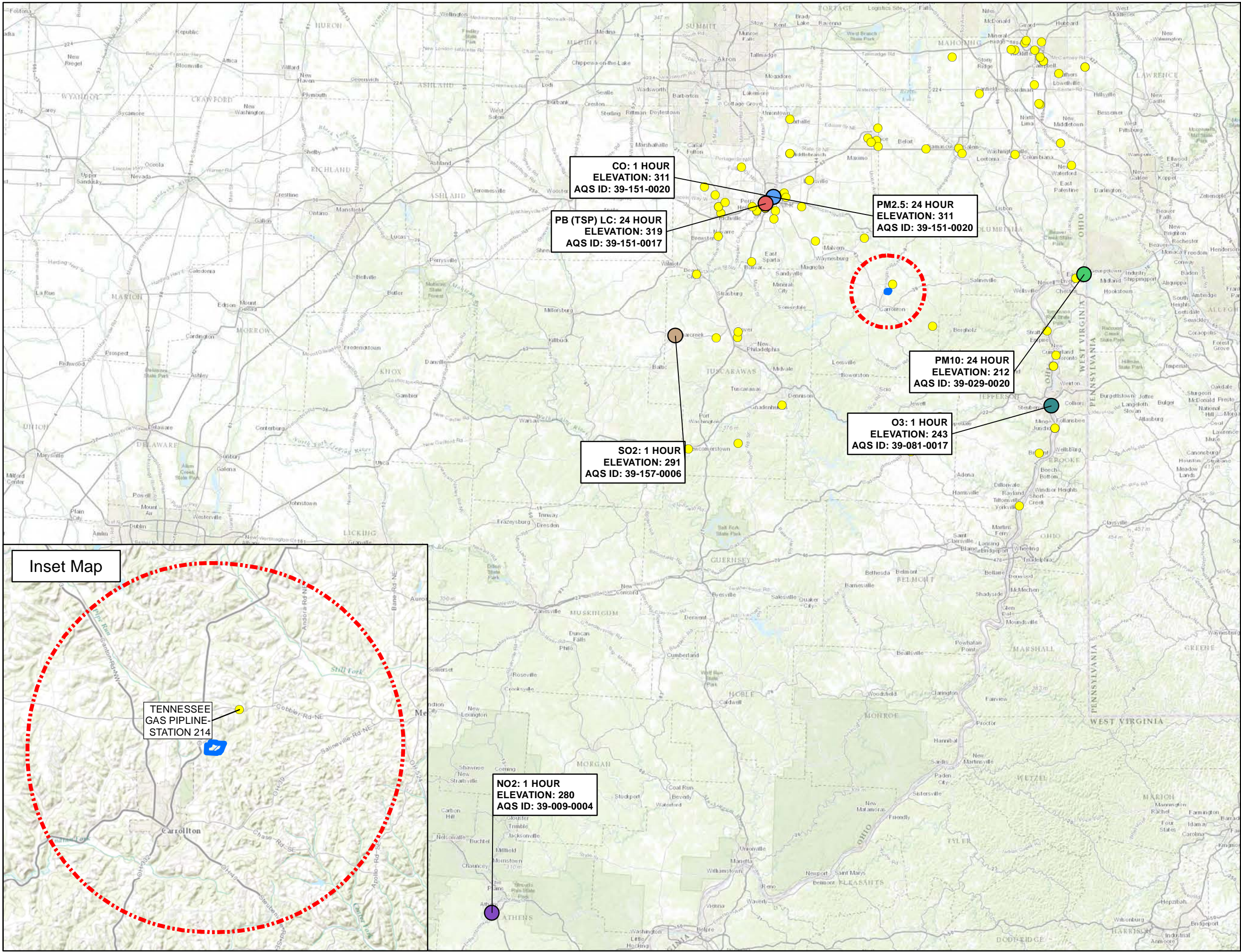


Figures – Section 4906-13-06

- Figure 06-1 – Air Monitoring Stations and Major Source Mapping
- Figure 06-2 – AERMOD Predicted Concentration Isopleth for Maximum Annual NO₂
- Figure 06-3 – AERMOD Predicted Concentration Isopleth for Maximum 1-hour NO₂
- Figure 06-4 – AERMOD Predicted Concentration Isopleth for Maximum 8-hour CO
- Figure 06-5 – AERMOD Predicted Concentration Isopleth for Maximum 1-hour CO
- Figure 06-6 – AERMOD Predicted Concentration Isopleth for Maximum Annual PM_{2.5}
- Figure 06-7 – AERMOD Predicted Concentration Isopleth for Maximum 24-hour PM_{2.5}
- Figure 06-8 – AERMOD Predicted Concentration Isopleth for Maximum 24-hour PM₁₀
- Figure 06-9 – AERMOD Predicted Concentration Isopleth for Maximum 1-hour SO₂
- Figure 06-10 – AERMOD Predicted Concentration Isopleth for Maximum 3-hour SO₂
- Figure 06-11 – Air Transportation Facilities



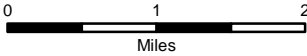
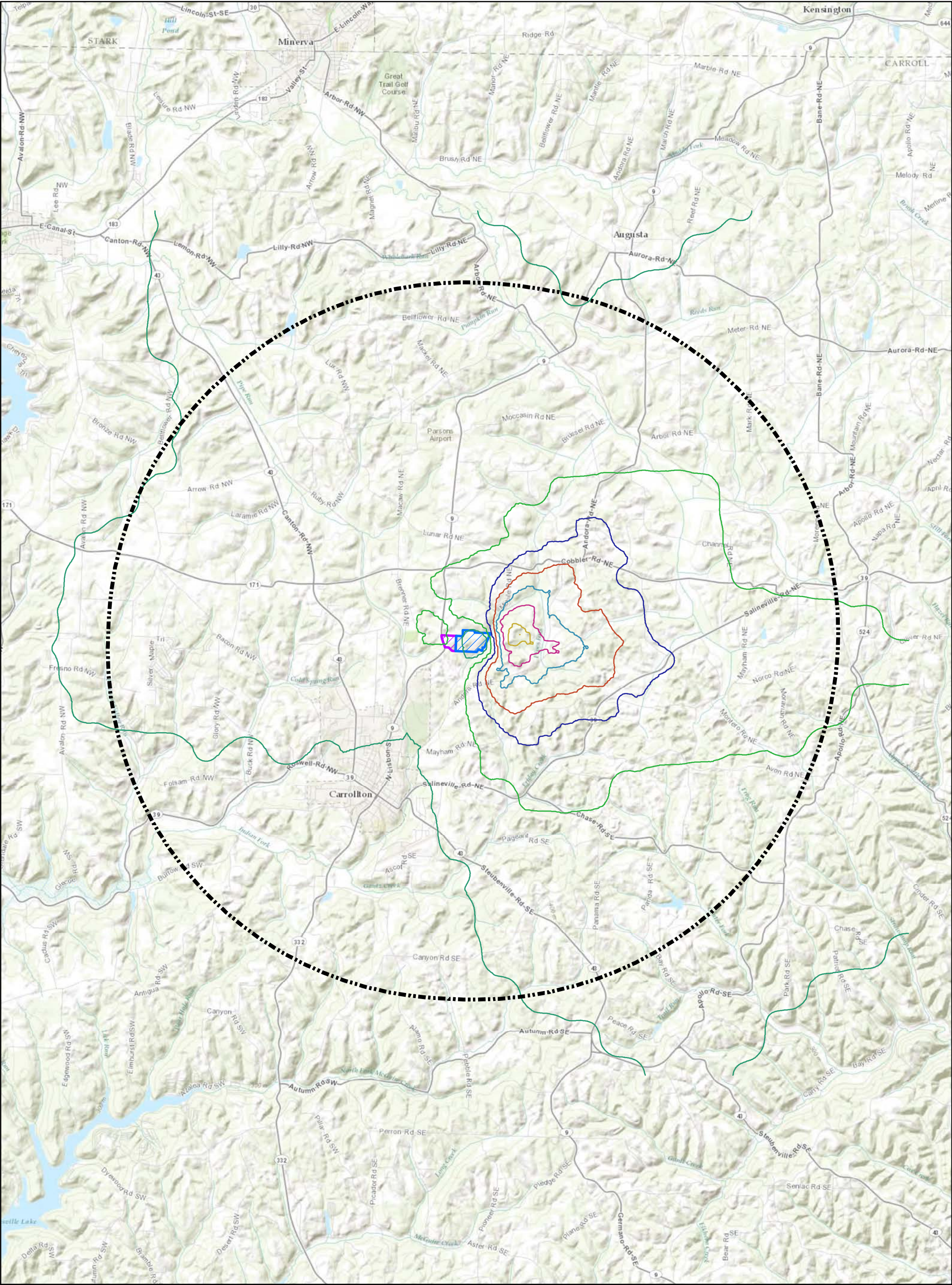


Figure 6-2
AERMOD Predicted
Concentration Isopleth
for Maximum Annual NO₂

Carroll County Energy
Carroll County, Ohio



Five-mile radius

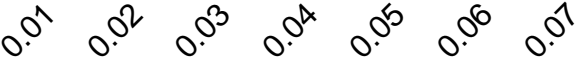


Facility Site

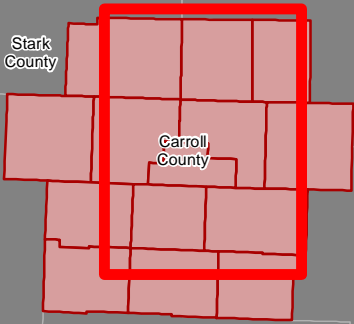


Construction Laydown Area

Annual NO₂ Concentration (µg/m³)



OVERVIEW MAP



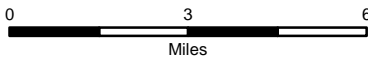
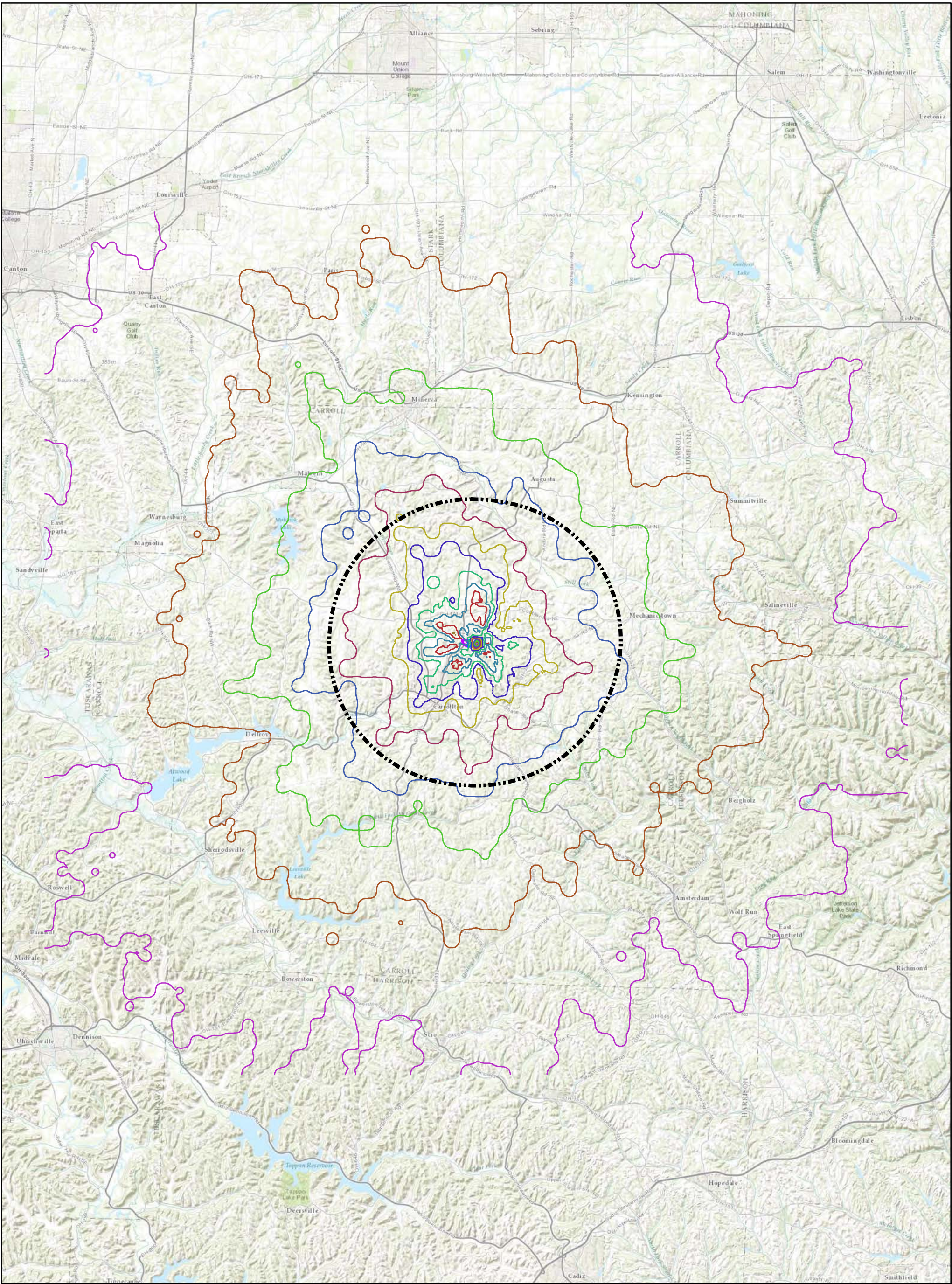
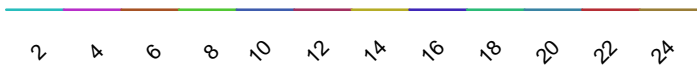


Figure 6-3
AERMOD Predicted
Concentration Isopleth
for Maximum 1-Hour NO₂
(5-year average)

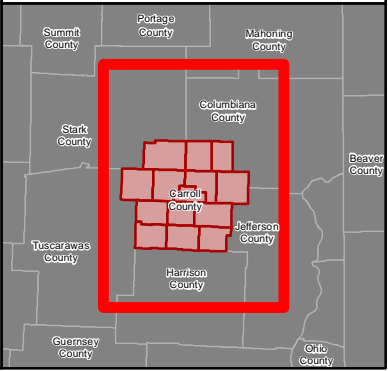
Carroll County Energy
Carroll County, Ohio

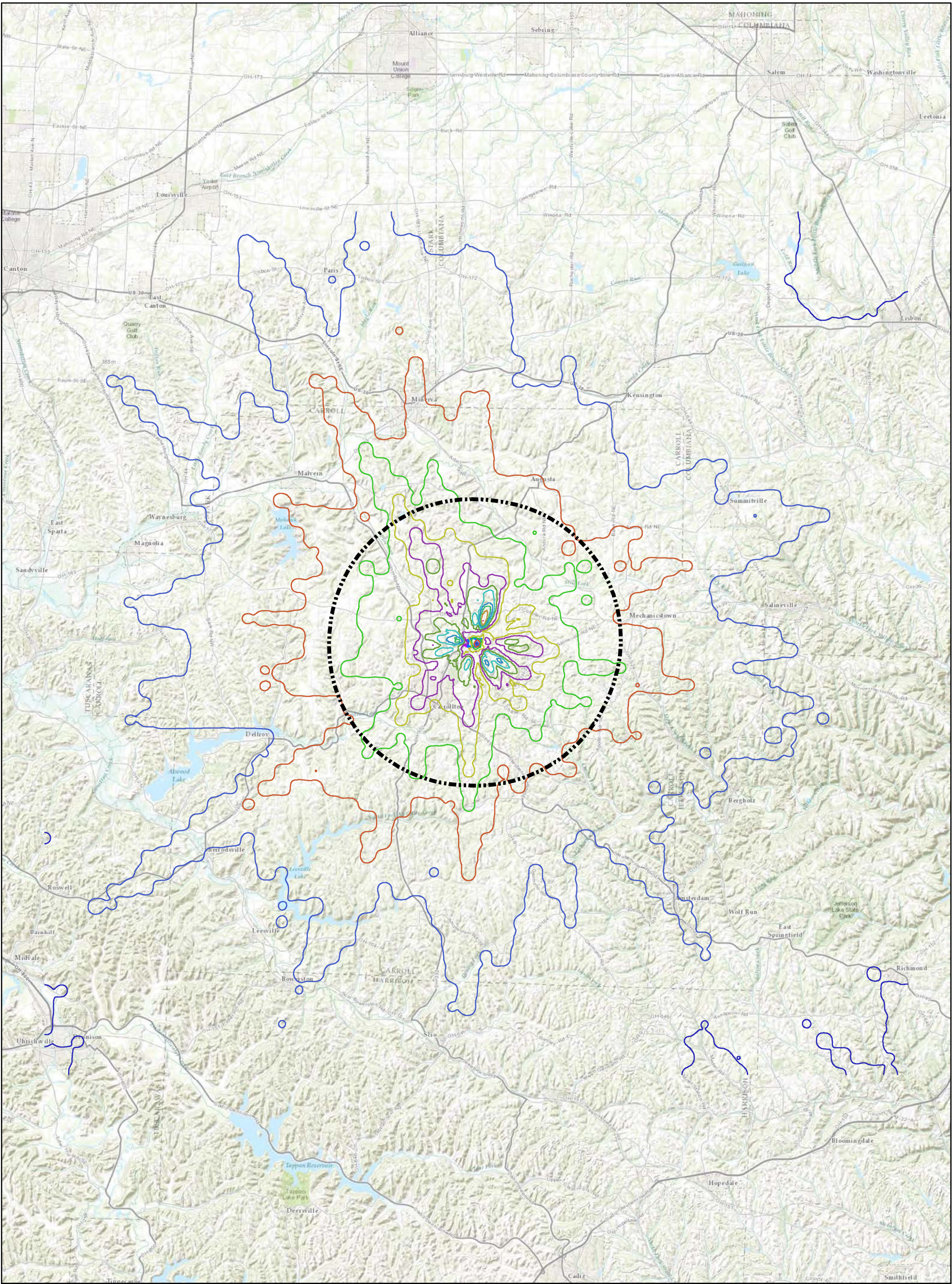
- Five-mile radius
- Facility Site
- Construction Laydown Area

1-Hour NO₂ Concentration Contour (µg/m³)



OVERVIEW MAP





Carroll County
ENERGY



0 3 6
Miles

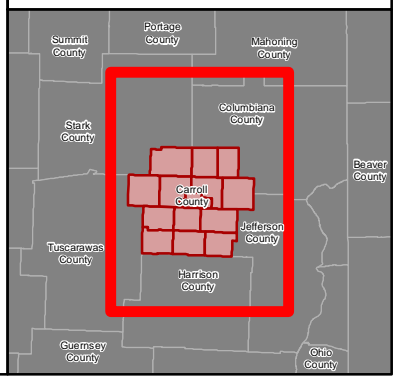
Figure 6-4
AERMOD Predicted
Concentration Isopleth
for Maximum 8-Hour CO

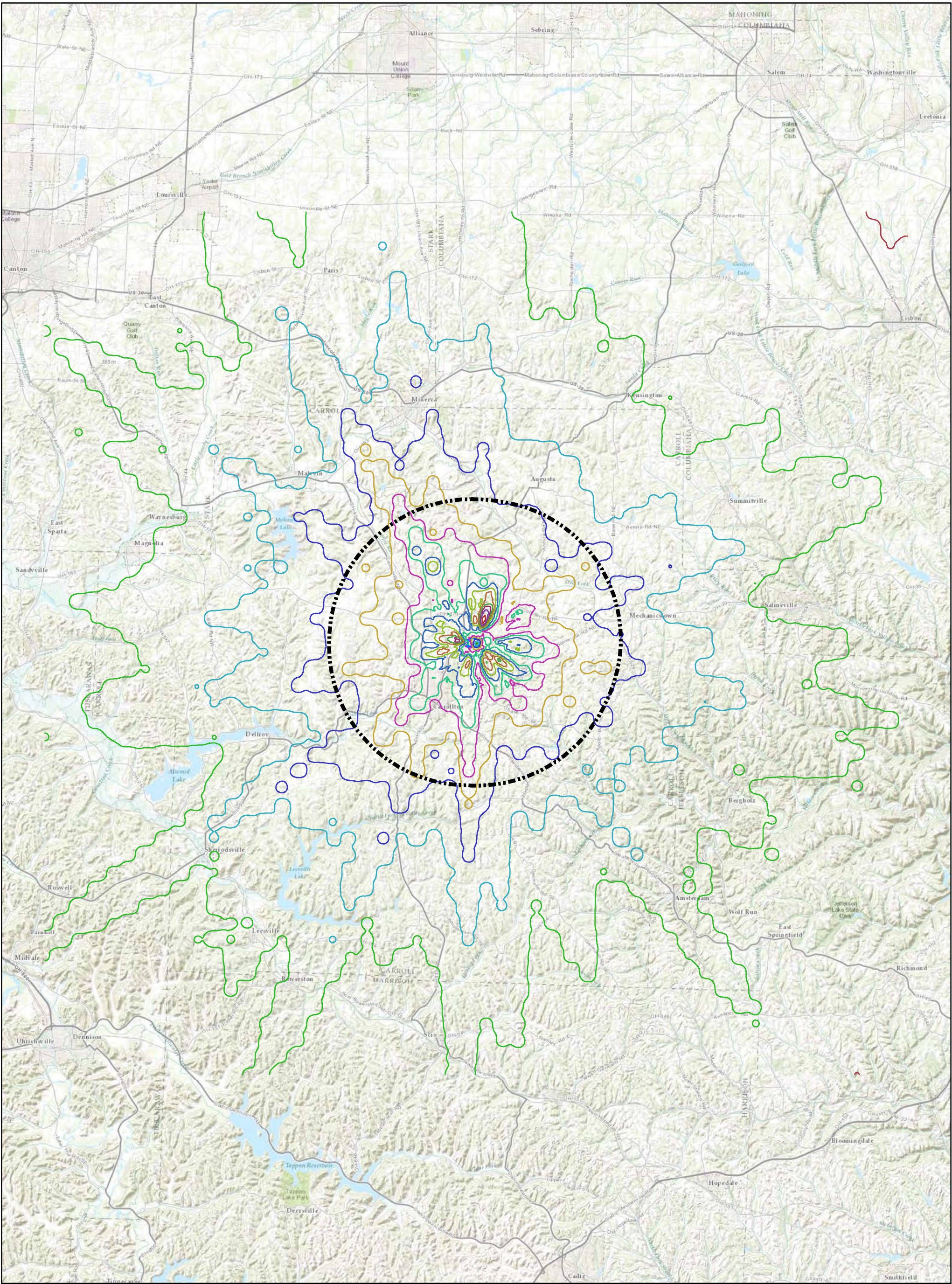
Carroll County Energy
Carroll County, Ohio

- Five-mile radius
- Facility Site
- Construction Laydown Area
- 8-Hour CO Concentration ($\mu\text{g}/\text{m}^3$)**

30 60 90 120 150 180 210 240 270 300 330 360

OVERVIEW MAP



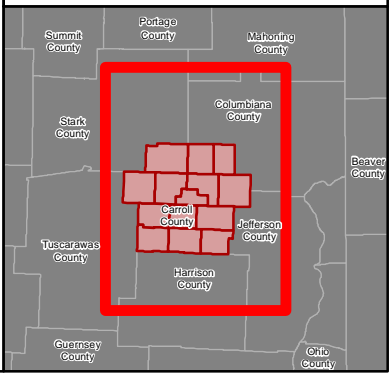


Carroll County
ENERGY



0 3 6
Miles

OVERVIEW MAP



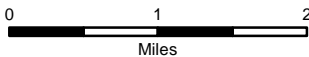
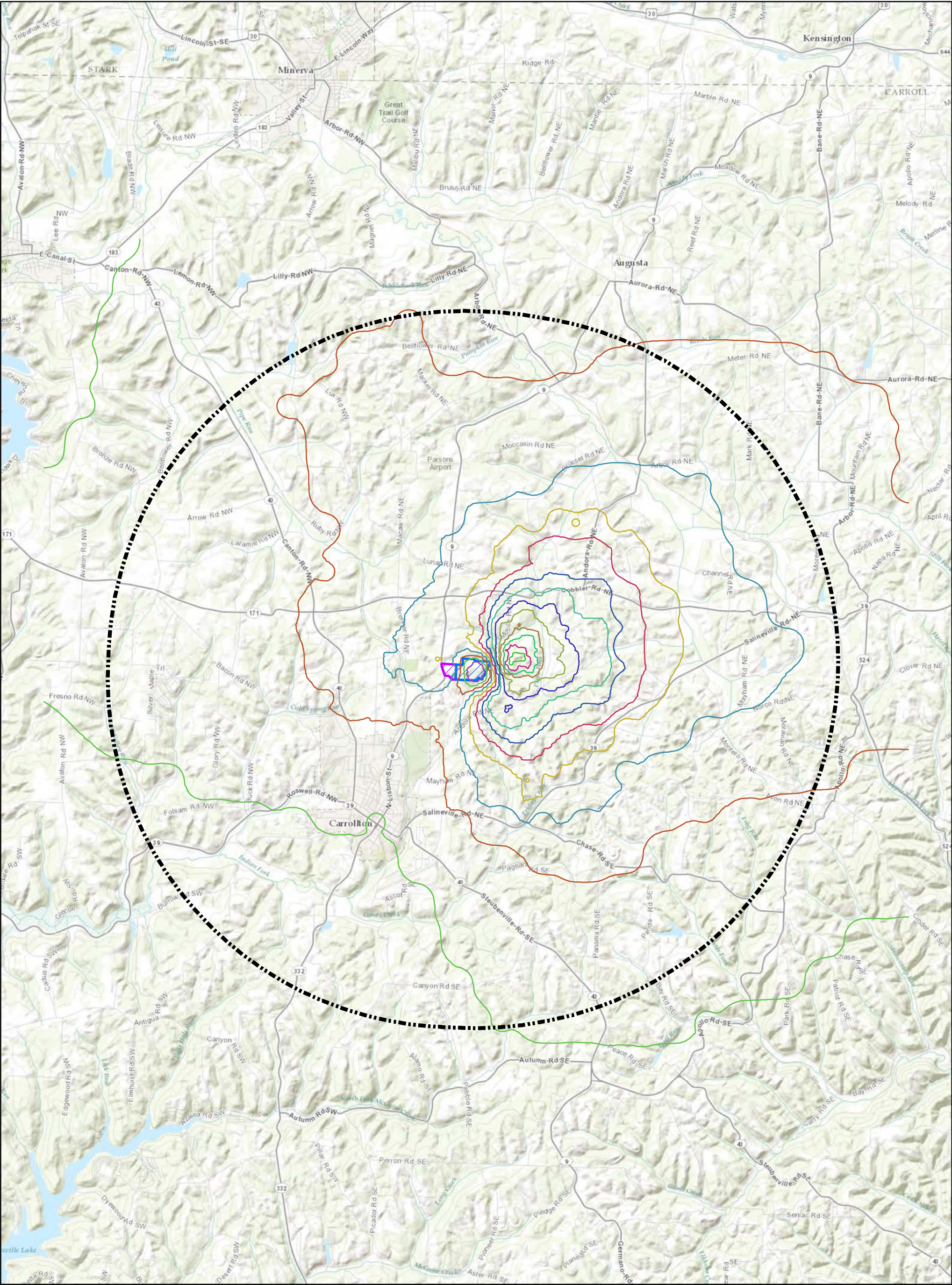
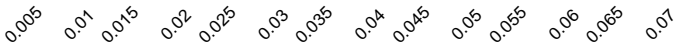


Figure 6-6
AERMOD Predicted
Concentration Isopleth
for Maximum
Annual PM_{2.5}
(5-year average)

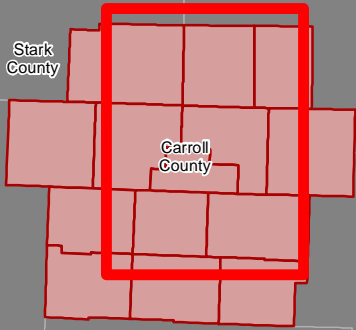
Carroll County Energy
Carroll County, Ohio

- Five-mile radius
- Facility Site
- Construction Laydown Area

Annual PM_{2.5} Concentration Contour (µg/m³)



OVERVIEW MAP



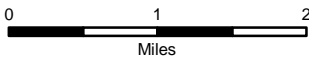
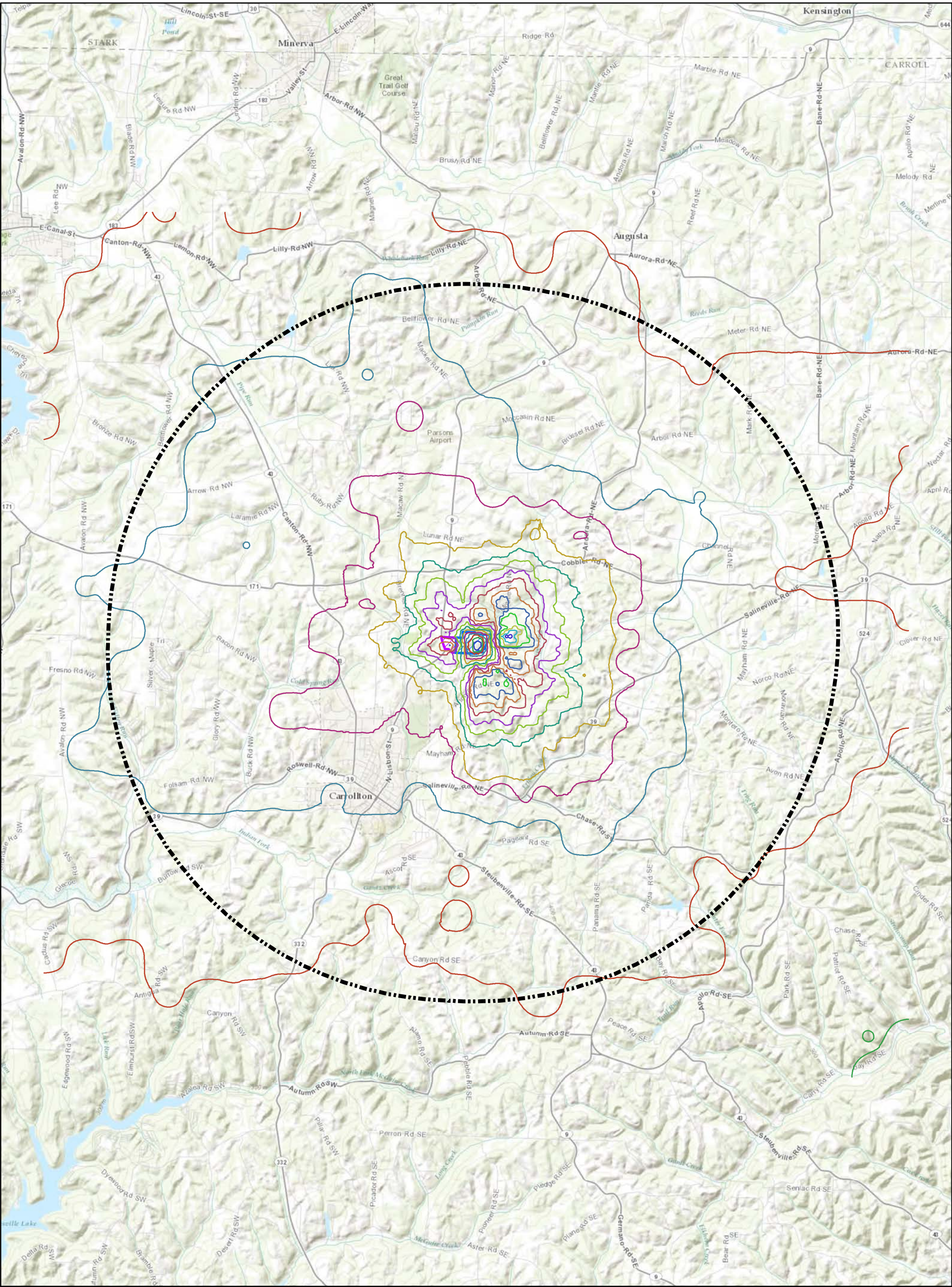


Figure 6-7
AERMOD Predicted
Concentration Isopleth
for Maximum
24-Hour PM_{2.5}
(5-year average)

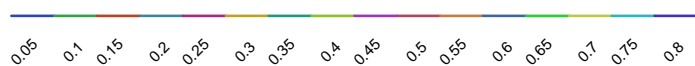
Carroll County Energy
Carroll County, Ohio

Five-mile radius

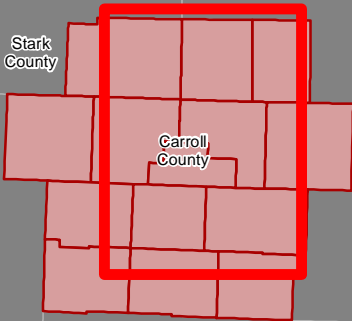
Facility Site

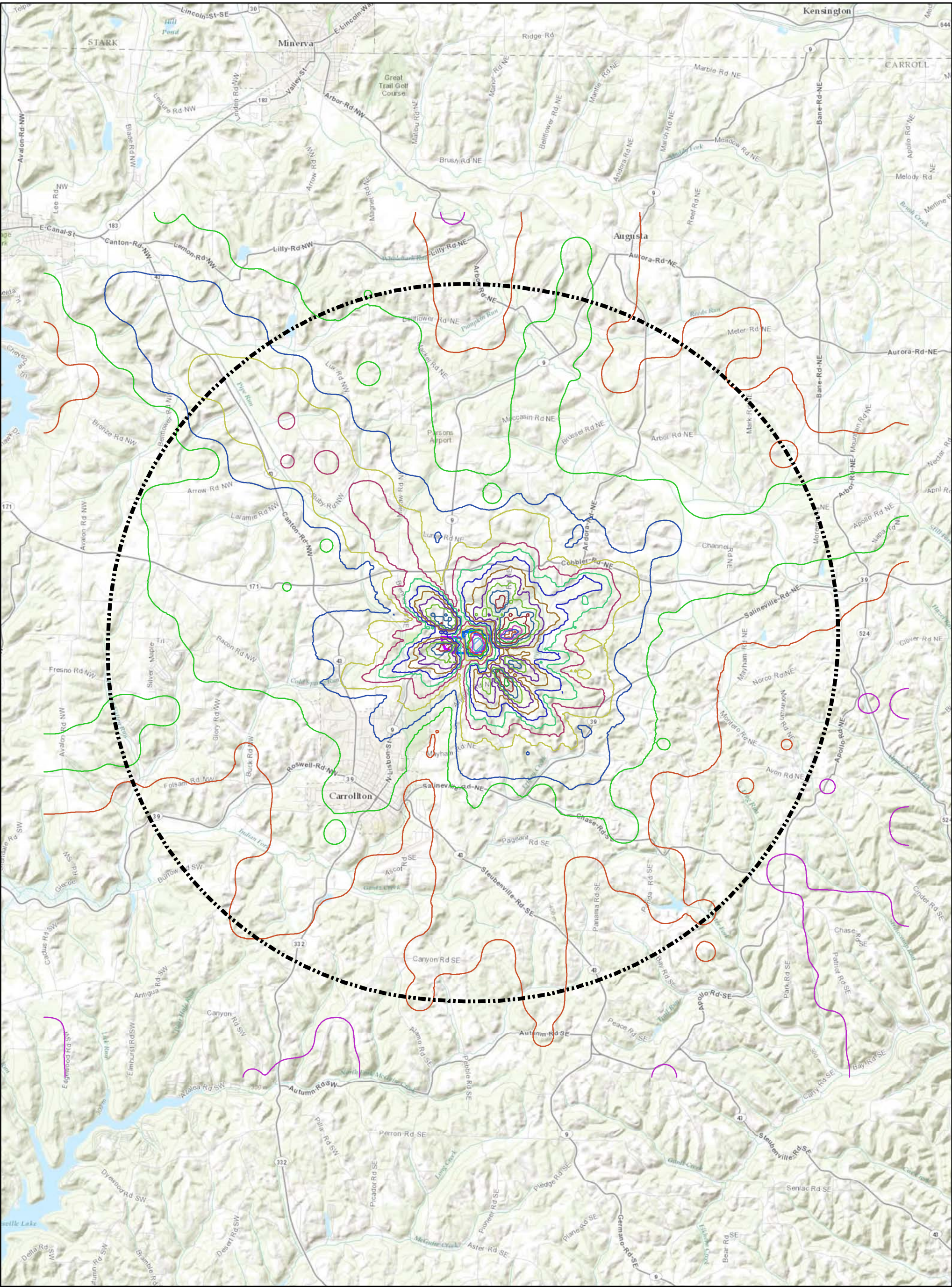
Construction Laydown Area

24-Hour PM_{2.5} Concentration Contour (µg/m³)



OVERVIEW MAP





Carroll County
ENERGY



0 1 2
Miles

Figure 6-8
AERMOD Predicted
Concentration Isopleth
for Maximum
24-Hour PM₁₀

Carroll County Energy
Carroll County, Ohio



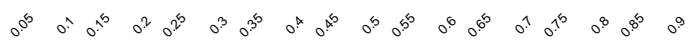
Five-mile radius



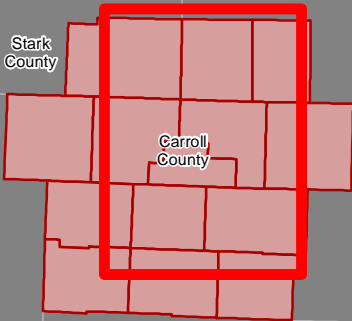
Facility Site

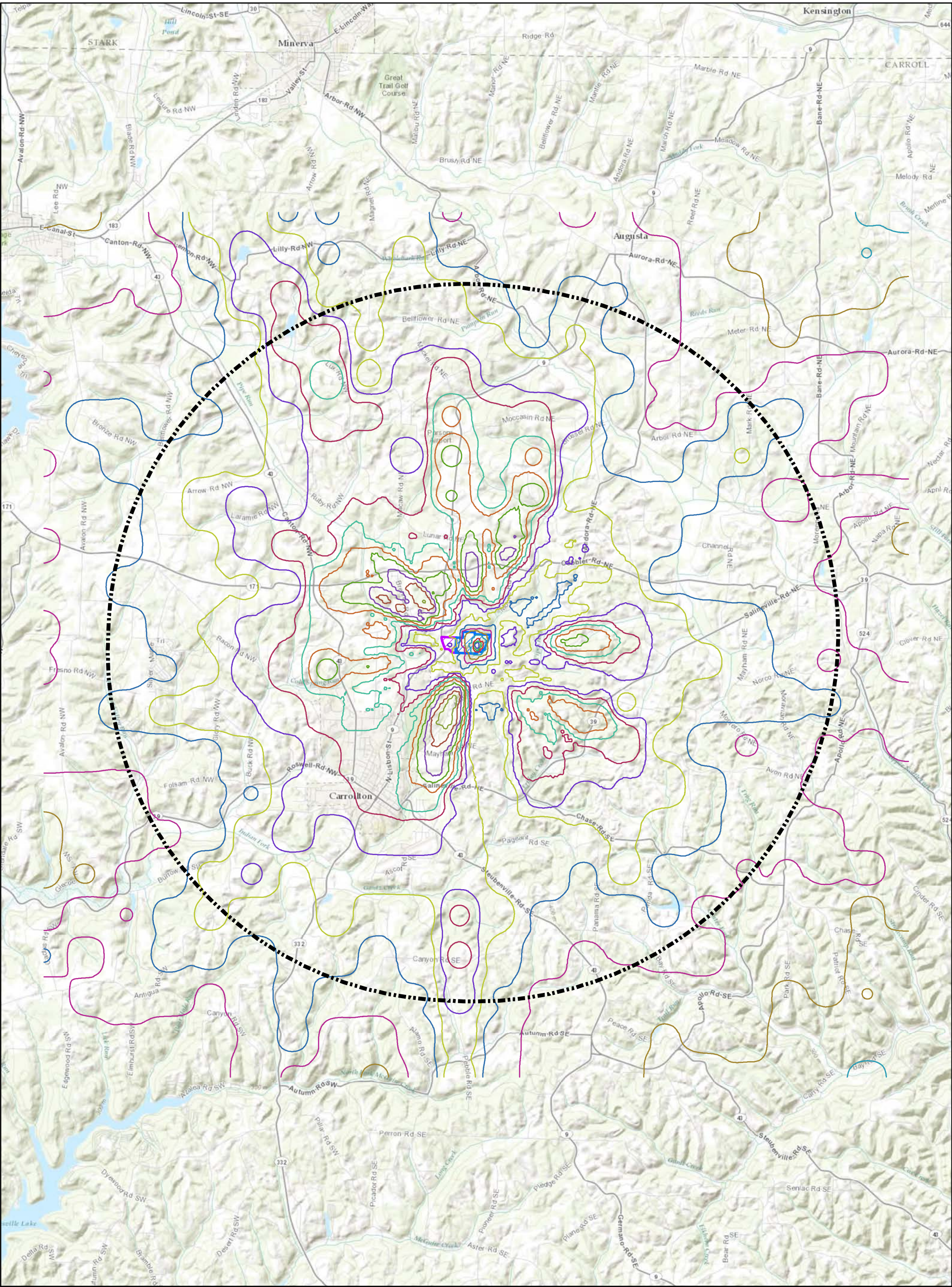
Construction Laydown Area

24-Hour PM₁₀ Concentration Contour (ug/m3)



OVERVIEW MAP





Carroll County
ENERGY



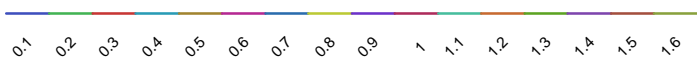
0 1 2
Miles

Figure 6-9
AERMOD Predicted
Concentration Isopleth
for Maximum
1-Hour SO₂

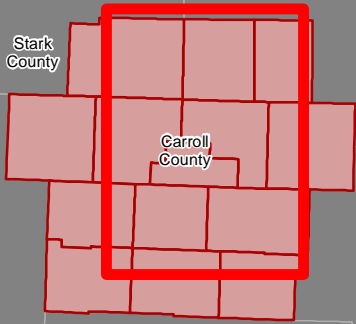
Carroll County Energy
Carroll County, Ohio

- Five-mile radius
- Facility Site
- Construction Laydown Area

1-Hour SO₂ Concentration Contour (µg/m³)



OVERVIEW MAP



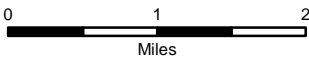
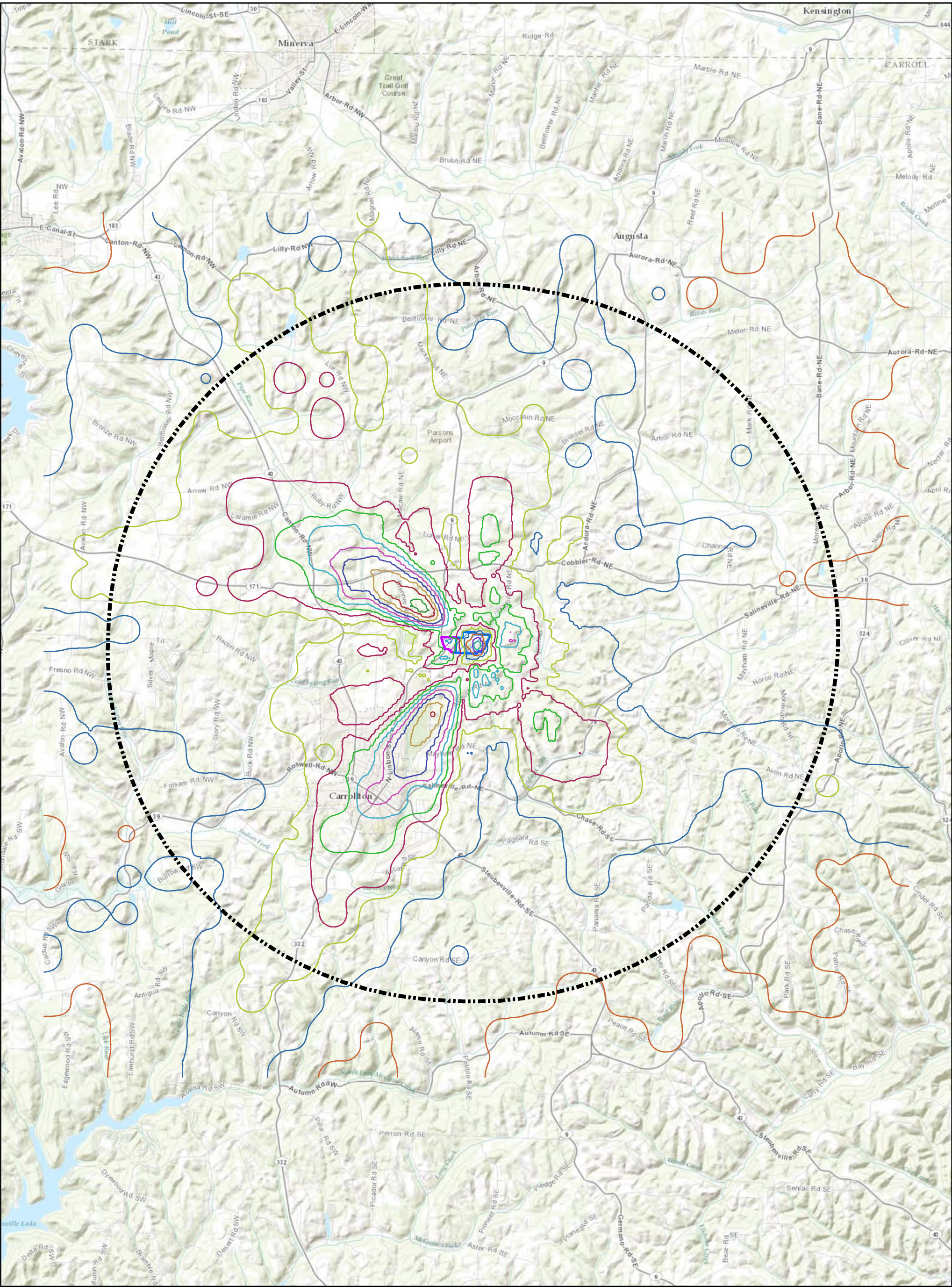
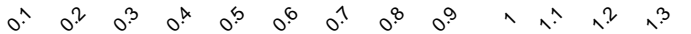


Figure 6-10
AERMOD Predicted
Concentration Isopleth
for Maximum
3-Hour SO₂

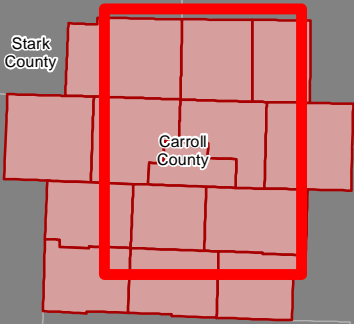
Carroll County Energy
Carroll County, Ohio

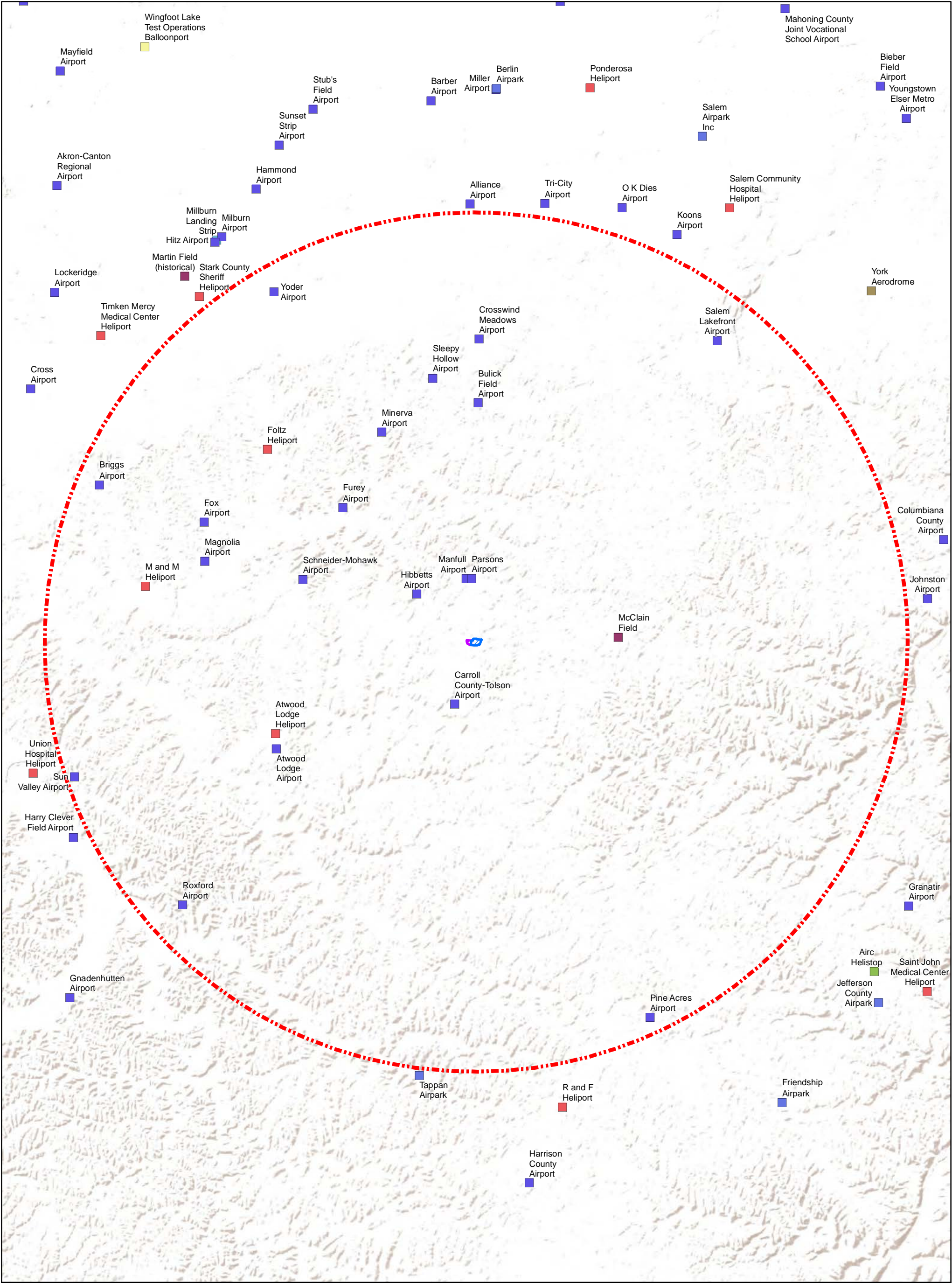
- Five-mile radius
- Facility Site
- Construction Laydown Area


3-Hour SO₂ Concentration Contour (µg/m³)



OVERVIEW MAP







0

3

6

Miles

Figure 06-11

Air Transportation Facilities

Carroll County Energy

Carroll County, Ohio

Aerodome

Airpark

Airport

Balloonport

Field

Heliport

Helistop

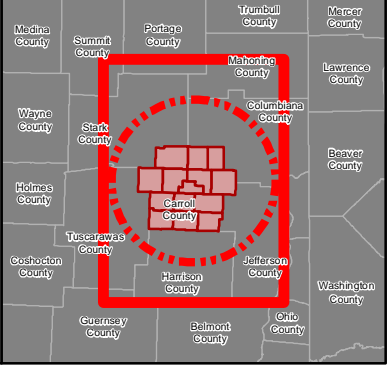
Landing Strip

Facility Site

Construction Laydown Area

20-Mile radius

OVERVIEW MAP



This foregoing document was electronically filed with the Public Utilities

Commission of Ohio Docketing Information System on

11/15/2013 1:13:40 PM

in

Case No(s). 13-1752-EL-BGN

Summary: Application Figures 06-1 through 06-11. electronically filed by Ms. Miranda R
Leppla on behalf of Carroll County Energy LLC