



Scioto Ridge Transmission Line

McDonald and Taylor Creek
Townships, Hardin County

**Figure 07-1: Ecological
Features**

September 2013

- Preferred Route Pole Location
- Public Road
- Alternate Transmission Route
- East Lima-Marysville 345 kV Line
- Substation
- General Soil Association
- Delineated Stream/Wetland
- Stream, River, or Lake
- NWI Wetland
- Ohio Wetland Inventory
- 1,000 ft Study Area
- Town Boundary
- County Boundary

Notes:

1. Basemap: NAIP 1-meter resolution orthoimagery, 2011 and ESRI StreetMap North America, 2012.
2. Delineated wetlands and streams provided by Cardno ENTRIX. Facility shapefiles provided by Applicant. US General Soil Map obtained from NRCS Web Soil Survey. NWI Wetland mapping obtained from US Fish and Wildlife Service.
3. No threatened or endangered species are known to exist within the Study Area.
4. The collector substation is part of a separate Certificate Application, Case No. 13-1177-EL-BGN.

everpower



www.edrcompanies.com



**Scioto Ridge
Transmission Line**

McDonald and Taylor Creek
Townships, Hardin County

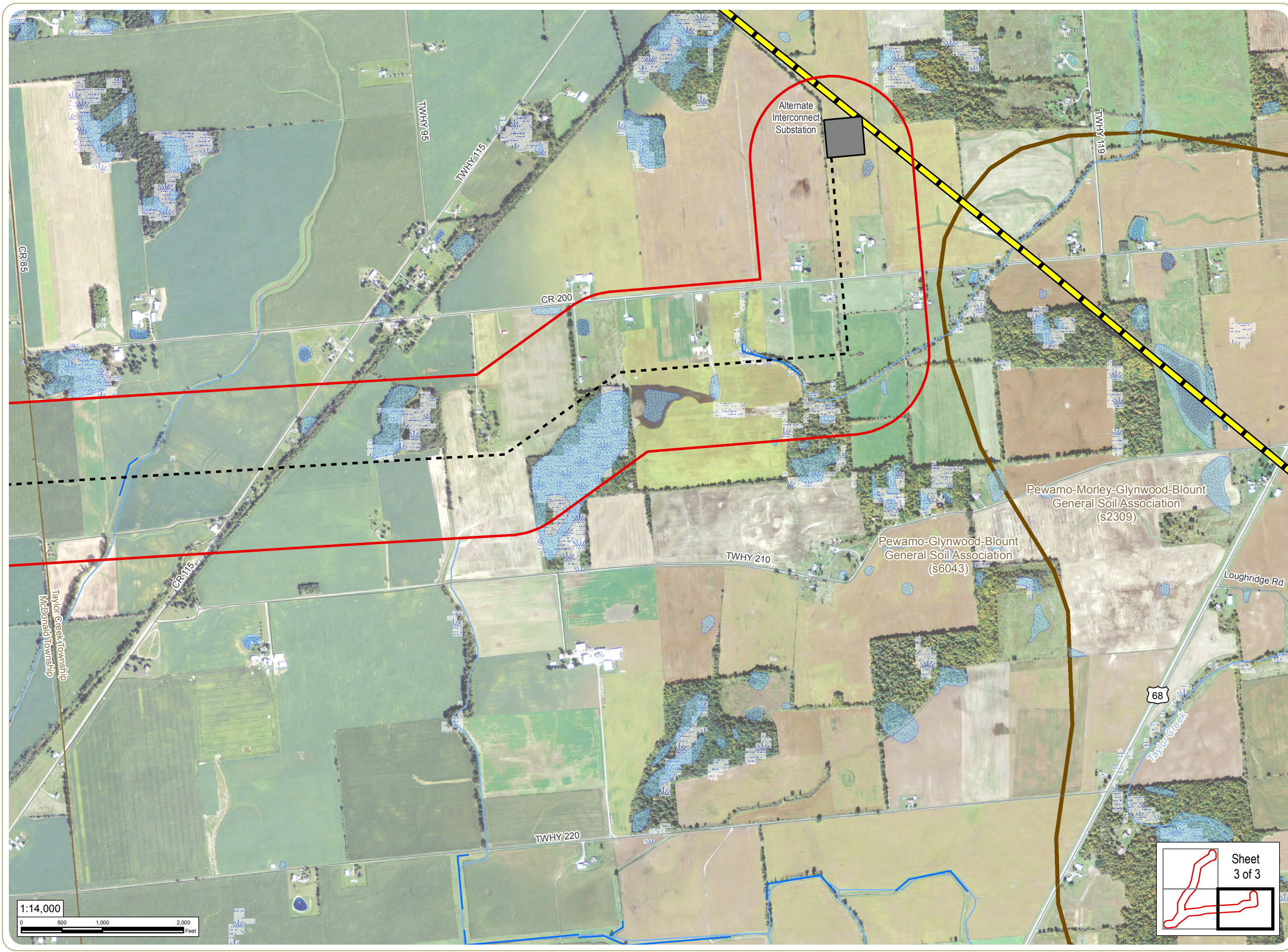
**Figure 07-1: Ecological
Features**

September 2013

- Preferred Route Pole Location
- Public Road
- Preferred Transmission Route
- - - Alternate Transmission Route
- █ East Lima-Marysville 345 kV Line
- ▬ Substation
- ▭ General Soil Association
- █ Delineated Stream/Wetland
- ▭ Stream, River, or Lake
- ▭ NWI Wetland
- ▭ Ohio Wetland Inventory
- ▭ 1,000 ft Study Area
- ▭ Town Boundary
- ▭ County Boundary

- Notes:**
1. Basemap: NAIP 1-meter resolution orthoimagery, 2011 and ESRI StreetMap North America, 2012.
 2. Delineated wetlands and streams provided by Cardno ENTRIX. Facility shapefiles provided by Applicant. US General Soil Map obtained from NRCS Web Soil Survey. NWI Wetland mapping obtained from US Fish and Wildlife Service.
 3. No threatened or endangered species are known to exist within the Study Area.
 4. The collector substation is part of a separate Certificate Application, Case No. 13-1177-EL-BGN.

everpower



Scioto Ridge Transmission Line

McDonald and Taylor Creek
Townships, Hardin County

**Figure 07-1: Ecological
Features**

September 2013

- Preferred Route Pole Location
- Public Road
- Preferred Transmission Route
- - - Alternate Transmission Route
- ▬ East Lima-Marysville 345 kV Line
- Substation
- ▭ General Soil Association
- ▭ Delineated Stream/Wetland
- ▭ Stream, River, or Lake
- ▭ NWI Wetland
- ▭ Ohio Wetland Inventory
- ▭ 1,000 ft Study Area
- ▭ Town Boundary
- ▭ County Boundary

Notes:

1. Basemap: NAIP 1-meter resolution orthoimagery, 2011 and ESRI StreetMap North America, 2012.
2. Delineated wetlands and streams provided by Cardno ENTRIX. Facility shapefiles provided by Applicant. US General Soil Map obtained from NRCS Web Soil Survey. NWI Wetland mapping obtained from US Fish and Wildlife Service.
3. No threatened or endangered species are known to exist within the Study Area.
4. The collector substation is part of a separate Certificate Application, Case No. 13-1177-EL-BGN.

everpower



www.edrcompanies.com

This foregoing document was electronically filed with the Public Utilities

Commission of Ohio Docketing Information System on

9/30/2013 4:24:22 PM

in

Case No(s). 13-1767-EL-BSB, 13-1768-EL-BTX

Summary: Application Figure 07-1. Ecological Features electronically filed by Ms. Miranda R Leppla on behalf of Hardin Wind LLC