

# Scioto Ridge Transmission Line

McDonald and Taylor Creek  
Townships, Hardin County

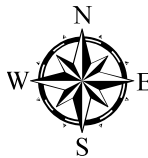
Figure 04-1: Geography  
and Topography

September 2013

- Preferred Route Pole Location
- 50 ft Topographic Contour
- 10 ft Topographic Contour
- Public Road
- Preferred Transmission Route
- - - Alternate Transmission Route
- Permanent Access Road
- East Lima-Marysville 345 kV Line
- Substation
- 1,000 ft Study Area
- Delineated Stream/Wetland
- Stream, River, or Lake
- Town Boundary
- County Boundary

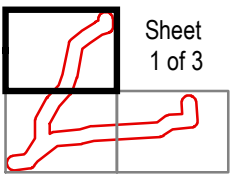
- Notes:**
1. Basemap: ESRI StreetMap North America, 2012.
  2. Proposed Facility shapefiles provided by Applicant. Delineated streams and wetlands provided by Cardno ENTRIX.
  3. Soil series derived from NRCS Soil Survey Geographic Database. Topographic contours generated from USGS digital elevation model.
  4. No air transportation facilities, cities, or villages occur within the Study Area.
  5. The collector substation is part of a separate Certificate Application, Case No. 13-1177-EL-BGN.

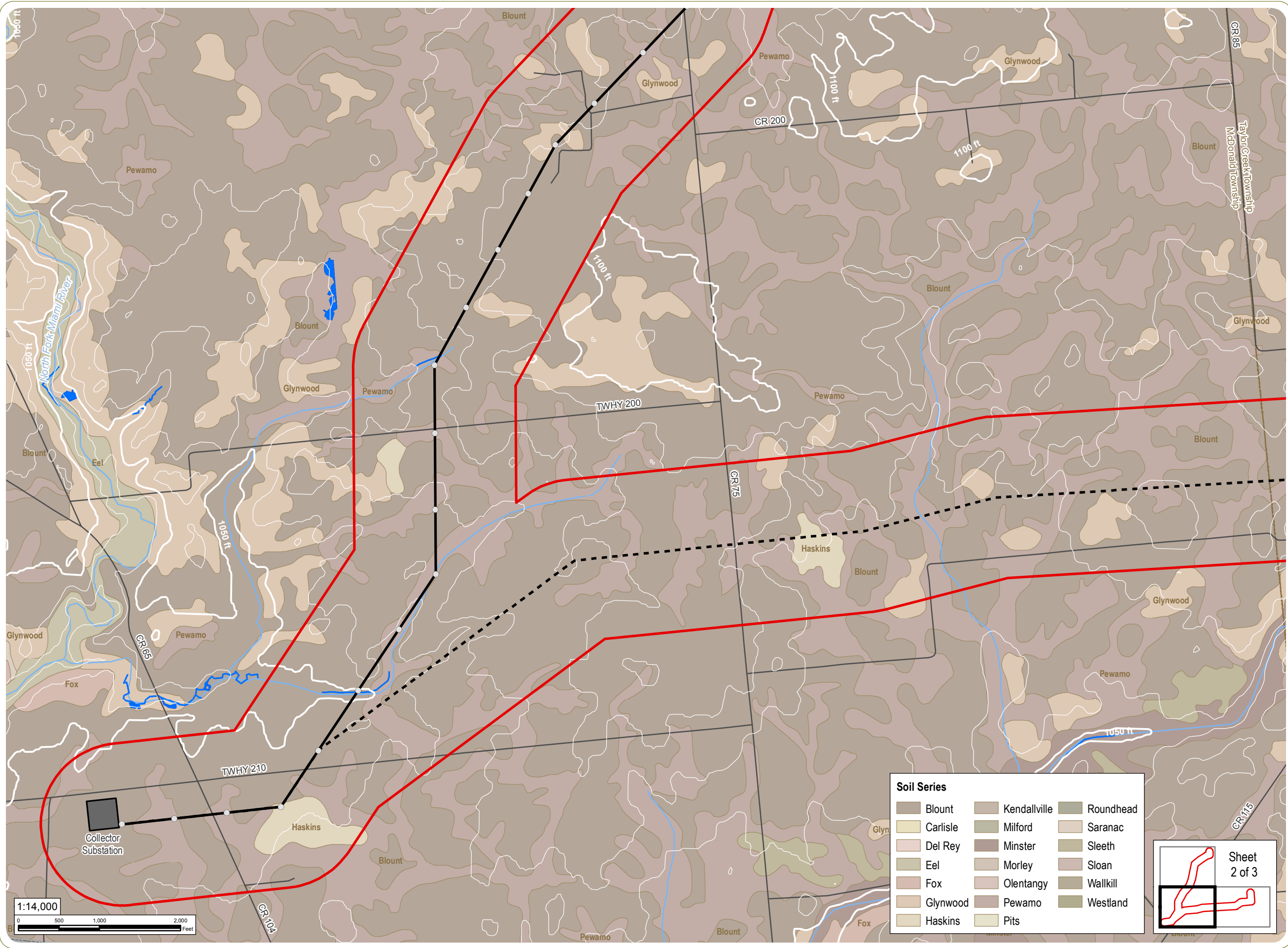
everpower



www.edrcompanies.com

Soil Series		
Blount	Kendallville	Roundhead
Carlisle	Milford	Saranac
Del Rey	Minster	Sleeth
Eel	Morley	Sloan
Fox	Olentangy	Wallkill
Glynwood	Pewamo	Westland
Haskins	Pits	





# Scioto Ridge Transmission Line

McDonald and Taylor Creek  
Townships, Hardin County

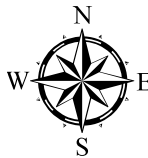
Figure 04-1: Geography  
and Topography

September 2013

- Preferred Route Pole Location
- 50 ft Topographic Contour
- 10 ft Topographic Contour
- Public Road
- Preferred Transmission Route
- - - Alternate Transmission Route
- Permanent Access Road
- East Lima-Marysville 345 kV Line
- Substation
- 1,000 ft Study Area
- Delineated Stream/Wetland
- Stream, River, or Lake
- Town Boundary
- County Boundary

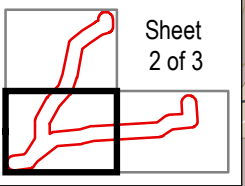
- Notes:**
1. Basemap: ESRI StreetMap North America, 2012.
  2. Proposed Facility shapefiles provided by Applicant. Delineated streams and wetlands provided by Cardno ENTRIX.
  3. Soil series derived from NRCS Soil Survey Geographic Database. Topographic contours generated from USGS digital elevation model.
  4. No air transportation facilities, cities, or villages occur within the Study Area.
  5. The collector substation is part of a separate Certificate Application, Case No. 13-1177-EL-BGN.

everpower

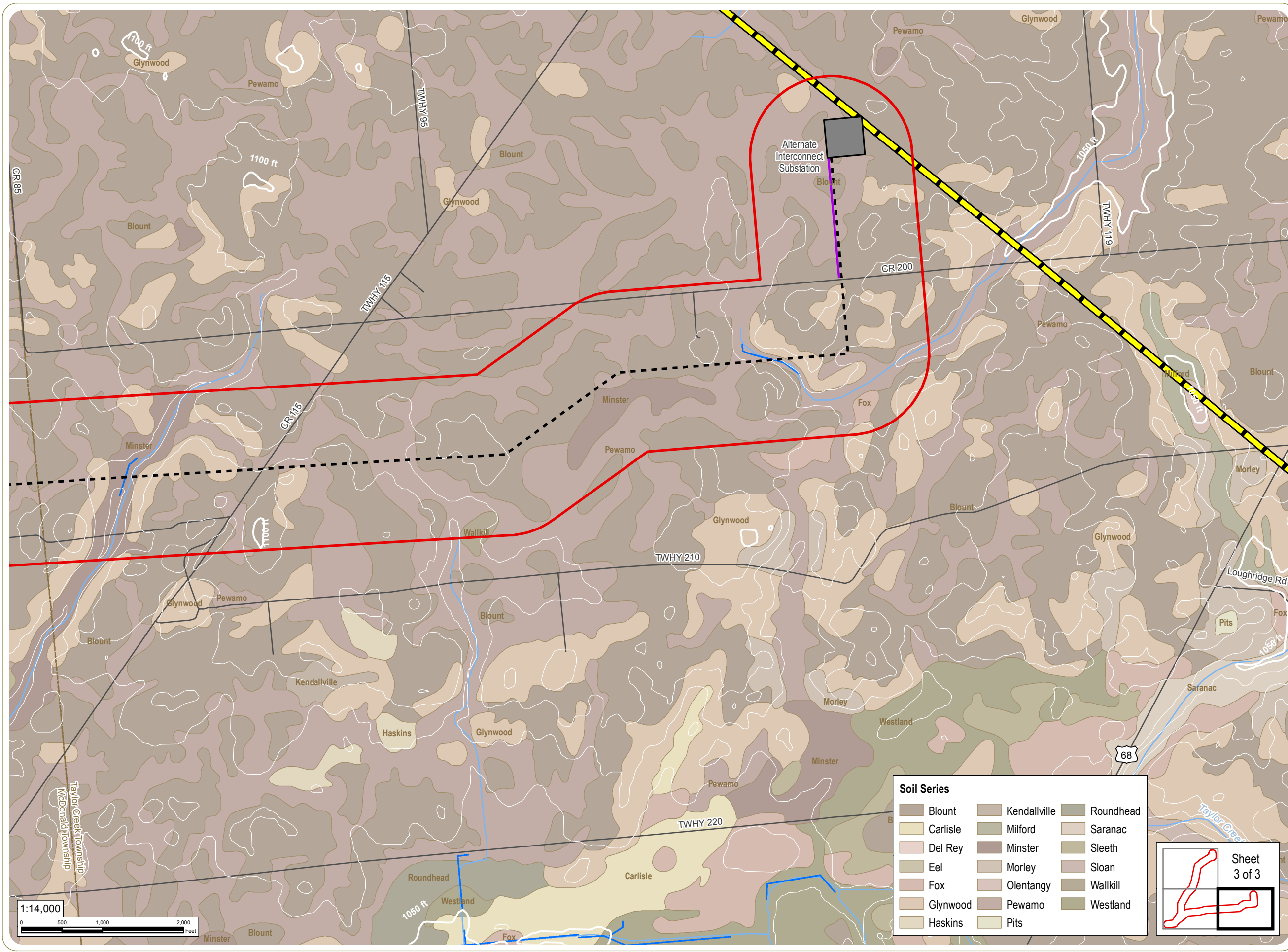


www.edrcompanies.com

Soil Series		
Blount	Kendallville	Roundhead
Carlisle	Milford	Saranac
Del Rey	Minster	Sleeth
Eel	Morley	Sloan
Fox	Olentangy	Wallkill
Glynwood	Pewamo	Westland
Haskins	Pits	







# Scioto Ridge Transmission Line

McDonald and Taylor Creek Townships, Hardin County

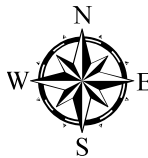
Figure 04-1: Geography and Topography

September 2013

- Preferred Route Pole Location
- 50 ft Topographic Contour
- 10 ft Topographic Contour
- Public Road
- Preferred Transmission Route
- Alternate Transmission Route
- Permanent Access Road
- East Lima-Marysville 345 kV Line
- Substation
- 1,000 ft Study Area
- Delineated Stream/Wetland
- Stream, River, or Lake
- Town Boundary
- County Boundary

- Notes:
1. Basemap: ESRI StreetMap North America, 2012.
  2. Proposed Facility shapefiles provided by Applicant. Delineated streams and wetlands provided by Cardno ENTRIX.
  3. Soil series derived from NRCS Soil Survey Geographic Database. Topographic contours generated from USGS digital elevation model.
  4. No air transportation facilities, cities, or villages occur within the Study Area.
  5. The collector substation is part of a separate Certificate Application, Case No. 13-1177-EL-BGN.

everpower



www.edrcompanies.com

**This foregoing document was electronically filed with the Public Utilities**

**Commission of Ohio Docketing Information System on**

**9/30/2013 4:21:57 PM**

**in**

**Case No(s). 13-1767-EL-BSB, 13-1768-EL-BTX**

Summary: Application Figure 04-1. Geography and Topography electronically filed by Ms. Miranda R Leppla on behalf of Hardin Wind LLC