

**Scioto Ridge Wind Farm**  
Roundhead, McDonald, Taylor Creek and Lynn Townships - Hardin County, Ohio. Richland and Rushcreek Townships - Logan County, Ohio.

Figure 05-1: Geography and Topography  
Sheet 1 of 19  
June 2013

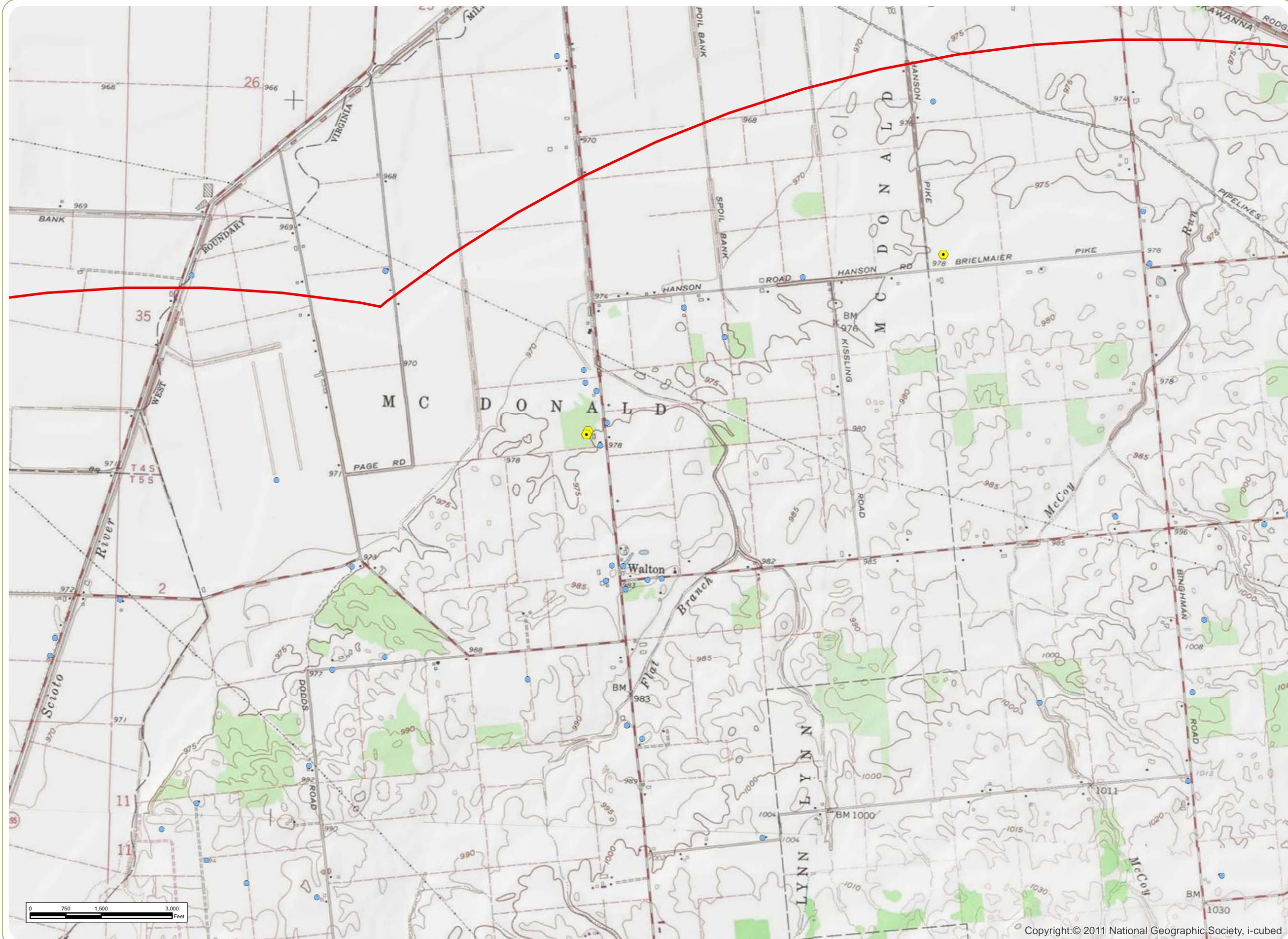
- Wind Turbine
- Temporary Met Tower
- Water Well
- Oil/Gas Well
- Residence
- Library
- Collection Line
- Access Road
- Collector Substation
- Laydown Yard
- Delineated Stream/Wetland
- Airport
- Cemetery
- School
- Golf Course
- Local Park
- State Nature Preserve
- State Park
- Population Center
- 5-Mile Radius

Notes:  
1. Base Map: USGS Topographic Maps via ESRI "USA Topo Maps" Map Service.  
2. Delineated wetlands and streams provided by Cardno ENTRIX. Facility and residence shapefiles provided by Applicant. Other data obtained from public sources by edr.  
3. Map Scale: 1:24,000

**everpower**







# Scioto Ridge Wind Farm

Roundhead, McDonald,  
Taylor Creek and Lynn  
Townships - Hardin County,  
Ohio. Richland and  
Rushcreek Townships -  
Logan County, Ohio.

Figure 05-1: Geography and  
Topography

Sheet 2 of 19

June 2013

- Wind Turbine
- Temporary Met Tower
- Water Well
- Oil/Gas Well
- Residence
- Library
- Collection Line
- Access Road
- Collector Substation
- Laydown Yard
- Delineated Stream/Wetland
- Airport
- Cemetery
- School
- Golf Course
- Local Park
- State Nature Preserve
- State Park
- Population Center
- 5-Mile Radius

- Notes:
1. Base Map: USGS Topographic Maps via ESRI "USA Topo Maps" Map Service.
  2. Delineated wetlands and streams provided by Cardno ENTRIX. Facility and residence shapefiles provided by Applicant. Other data obtained from public sources by edr.
  3. Map Scale: 1:24,000

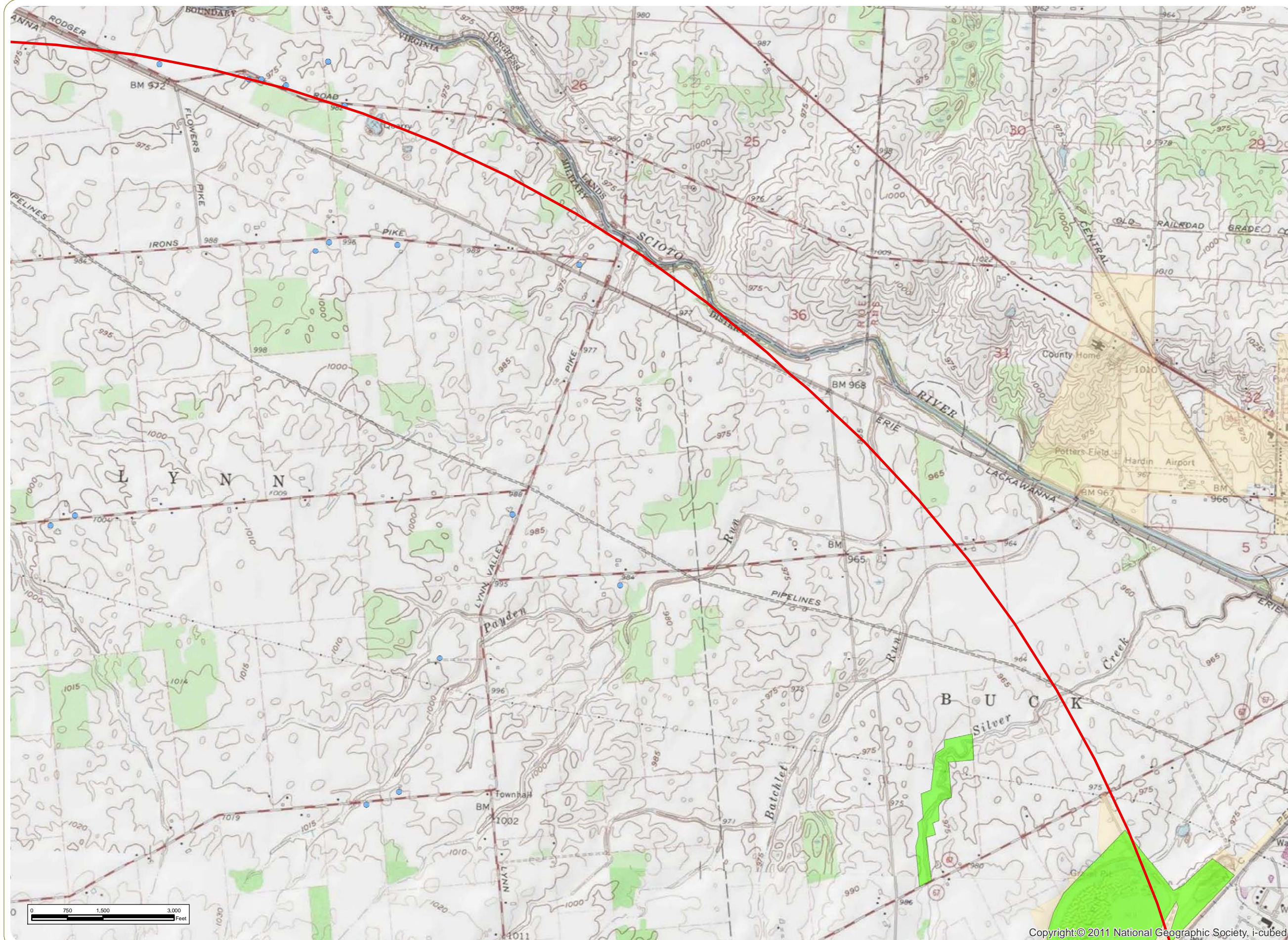
everpower



Copyright © 2011 National Geographic Society, i-cubed

www.edrcompanies.com





## Scioto Ridge Wind Farm

Roundhead, McDonald, Taylor Creek and Lynn Townships - Hardin County, Ohio. Richland and Rushcreek Townships - Logan County, Ohio.

Figure 05-1: Geography and Topography

Sheet 3 of 19

June 2013

- Wind Turbine
- Temporary Met Tower
- Water Well
- Oil/Gas Well
- Residence
- Library
- Collection Line
- Access Road
- Collector Substation
- Laydown Yard
- Delineated Stream/Wetland
- Airport
- Cemetery
- School
- Golf Course
- Local Park
- State Nature Preserve
- State Park
- Population Center
- 5-Mile Radius

### Notes:

1. Base Map: USGS Topographic Maps via ESRI "USA Topo Maps" Map Service.
2. Delineated wetlands and streams provided by Cardno ENTRIX. Facility and residence shapefiles provided by Applicant. Other data obtained from public sources by edr.
3. Map Scale: 1:24,000

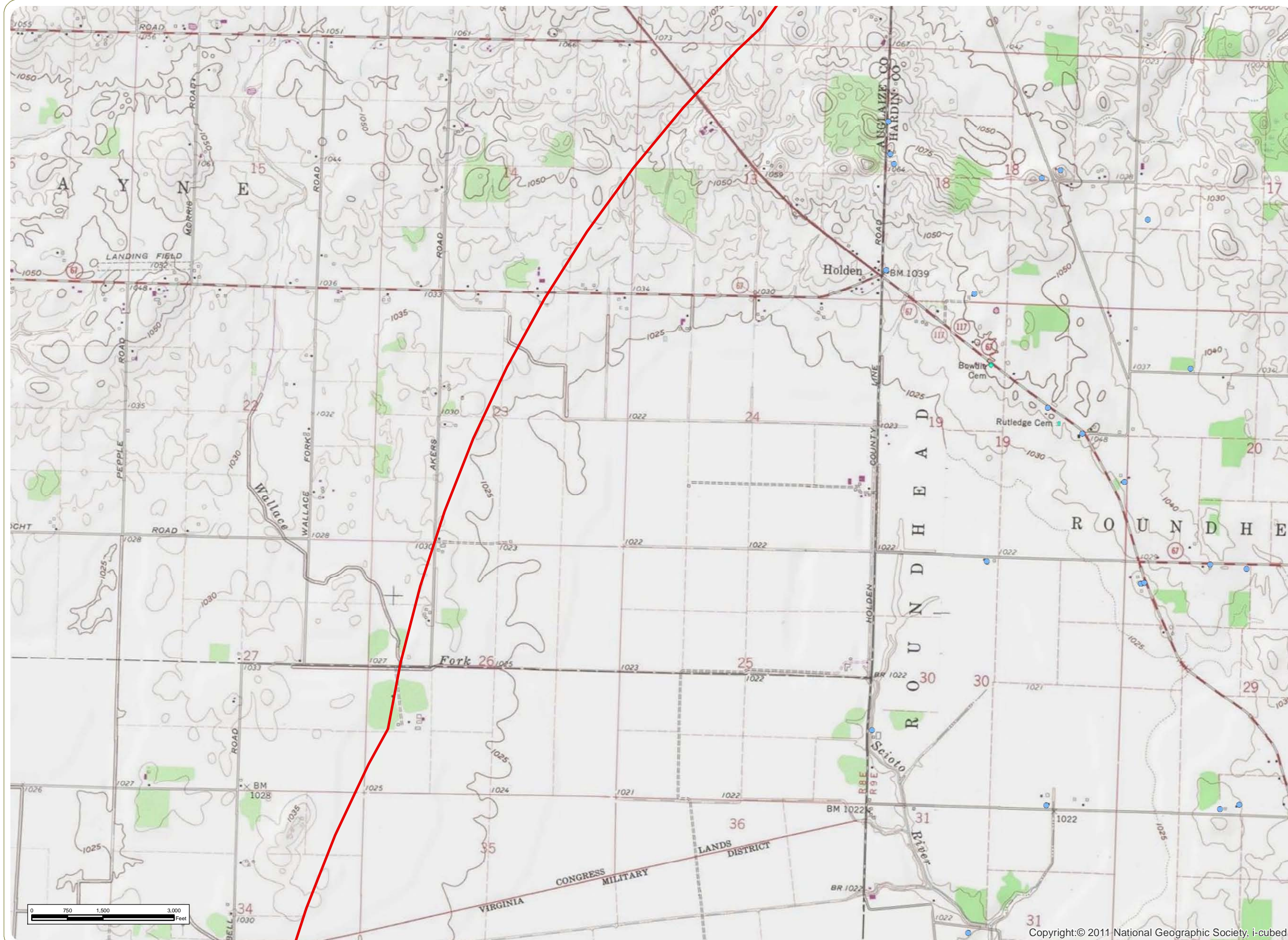
**everpower**



Copyright © 2011 National Geographic Society, i-cubed

[www.edrcompanies.com](http://www.edrcompanies.com)





## Scioto Ridge Wind Farm

Roundhead, McDonald, Taylor Creek and Lynn Townships - Hardin County, Ohio. Richland and Rushcreek Townships - Logan County, Ohio.

Figure 05-1: Geography and Topography

Sheet 4 of 19

June 2013

- Wind Turbine
- Temporary Met Tower
- Water Well
- Oil/Gas Well
- Residence
- Library
- Collection Line
- Access Road
- Collector Substation
- Laydown Yard
- Delineated Stream/Wetland
- Airport
- Cemetery
- School
- Golf Course
- Local Park
- State Nature Preserve
- State Park
- Population Center
- 5-Mile Radius

### Notes:

1. Base Map: USGS Topographic Maps via ESRI "USA Topo Maps" Map Service.
2. Delineated wetlands and streams provided by Cardno ENTRIX. Facility and residence shapefiles provided by Applicant. Other data obtained from public sources by edr.
3. Map Scale: 1:24,000

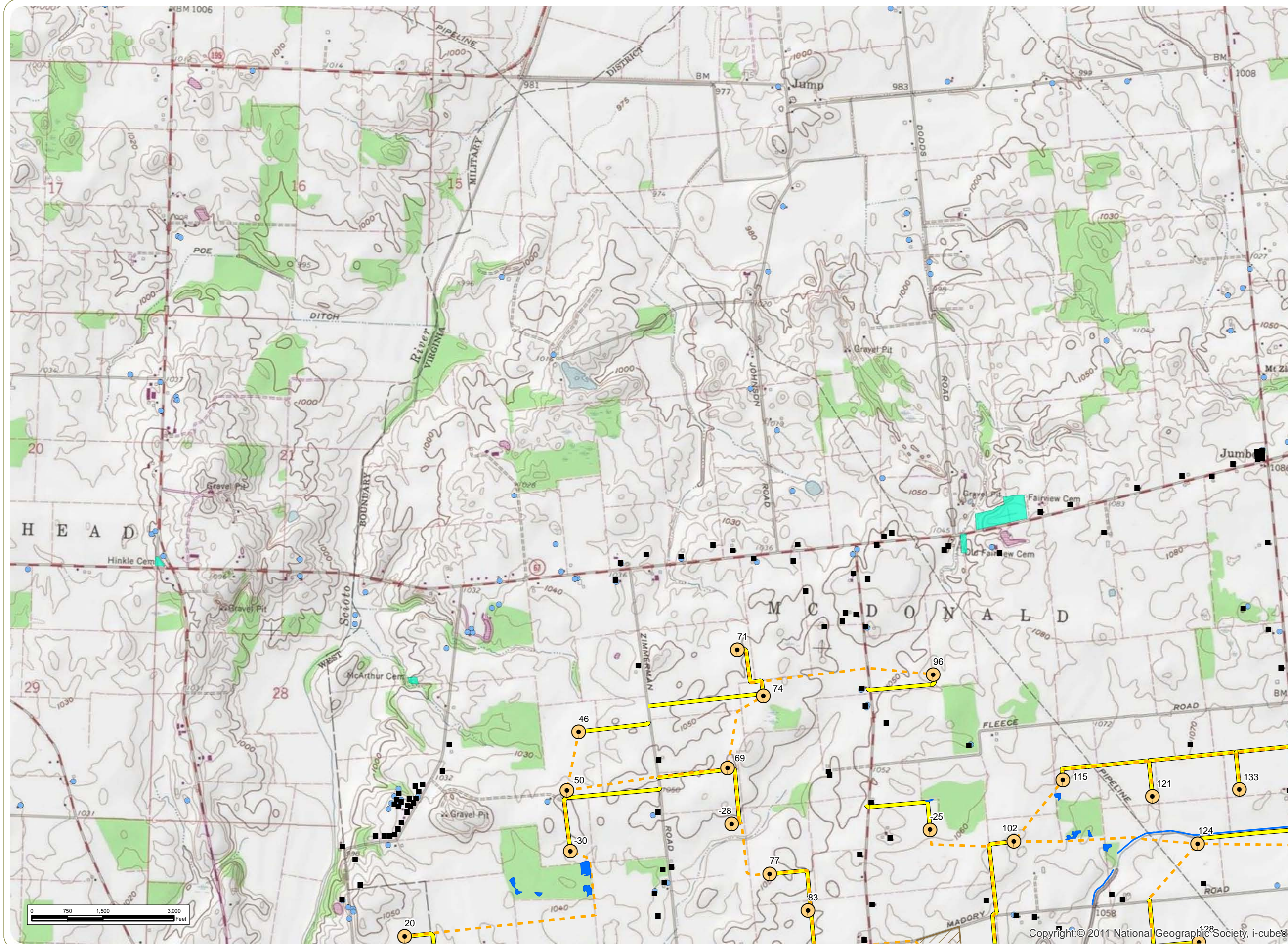
**everpower**



Copyright © 2011 National Geographic Society, i-cubed

[www.edrcompanies.com](http://www.edrcompanies.com)





**Scioto Ridge Wind Farm**  
 Roundhead, McDonald, Taylor Creek and Lynn Townships - Hardin County, Ohio. Richland and Rushcreek Townships - Logan County, Ohio.

Figure 05-1: Geography and Topography  
 Sheet 5 of 19  
 June 2013

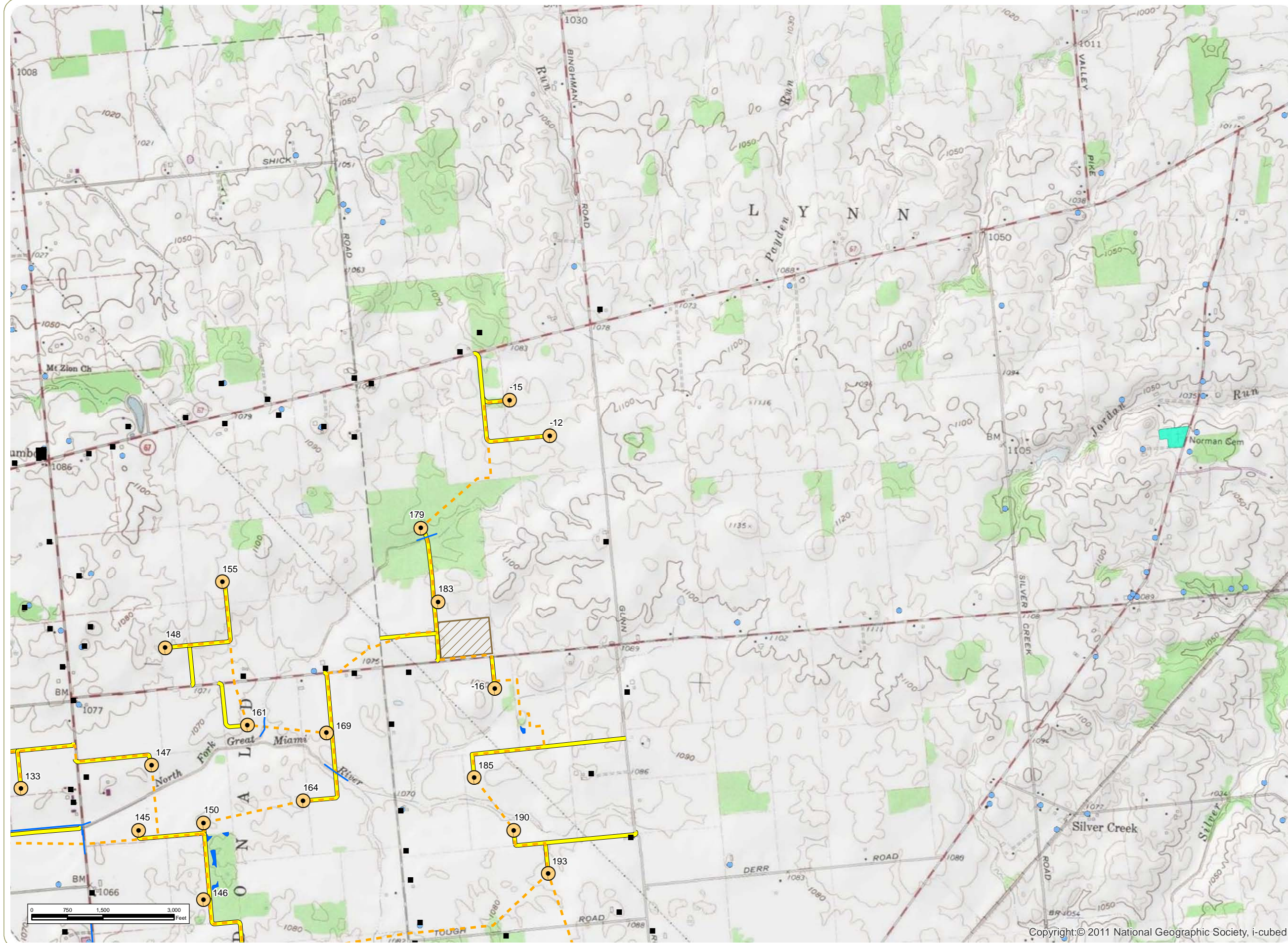
- Wind Turbine
- Temporary Met Tower
- Water Well
- Oil/Gas Well
- Residence
- Library
- Collection Line
- Access Road
- Collector Substation
- Laydown Yard
- Delineated Stream/Wetland
- Airport
- Cemetery
- School
- Golf Course
- Local Park
- State Nature Preserve
- State Park
- Population Center
- 5-Mile Radius

Notes:  
 1. Base Map: USGS Topographic Maps via ESRI "USA Topo Maps" Map Service.  
 2. Delineated wetlands and streams provided by Cardno ENTRIX. Facility and residence shapefiles provided by Applicant. Other data obtained from public sources by edr.  
 3. Map Scale: 1:24,000



www.edrcompanies.com





## Scioto Ridge Wind Farm

Roundhead, McDonald, Taylor Creek and Lynn Townships - Hardin County, Ohio. Richland and Rushcreek Townships - Logan County, Ohio.

Figure 05-1: Geography and Topography

Sheet 6 of 19  
June 2013

- Wind Turbine
- Temporary Met Tower
- Water Well
- Oil/Gas Well
- Residence
- Library
- Collection Line
- Access Road
- Collector Substation
- Laydown Yard
- Delineated Stream/Wetland
- Airport
- Cemetery
- School
- Golf Course
- Local Park
- State Nature Preserve
- State Park
- Population Center
- 5-Mile Radius

Notes:  
1. Base Map: USGS Topographic Maps via ESRI "USA Topo Maps" Map Service.  
2. Delineated wetlands and streams provided by Cardno ENTRIX. Facility and residence shapefiles provided by Applicant. Other data obtained from public sources by edr.  
3. Map Scale: 1:24,000

everpower



www.edrcompanies.com

Copyright © 2011 National Geographic Society, i-cubed





## Scioto Ridge Wind Farm

Roundhead, McDonald, Taylor Creek and Lynn Townships - Hardin County, Ohio. Richland and Rushcreek Townships - Logan County, Ohio.

Figure 05-1: Geography and Topography

Sheet 7 of 19

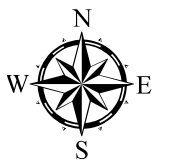
June 2013

- Wind Turbine
- Temporary Met Tower
- Water Well
- Oil/Gas Well
- Residence
- Library
- Collection Line
- Access Road
- Collector Substation
- Laydown Yard
- Delineated Stream/Wetland
- Airport
- Cemetery
- School
- Golf Course
- Local Park
- State Nature Preserve
- State Park
- Population Center
- 5-Mile Radius

### Notes:

1. Base Map: USGS Topographic Maps via ESRI "USA Topo Maps" Map Service.
2. Delineated wetlands and streams provided by Cardno ENTRIX. Facility and residence shapefiles provided by Applicant. Other data obtained from public sources by edr.
3. Map Scale: 1:24,000

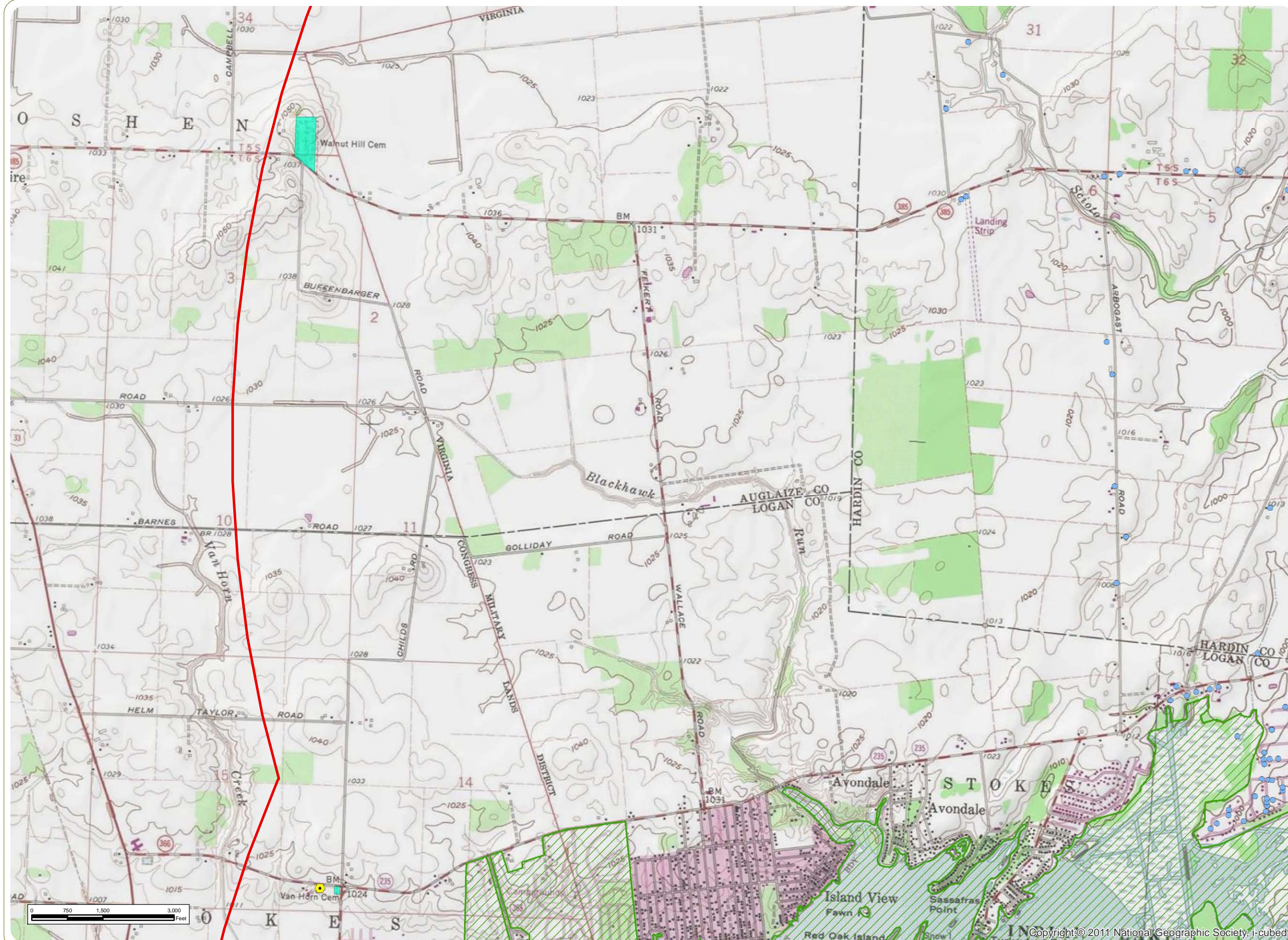
everpower



Copyright © 2011 National Geographic Society, i-cubed

www.edrcompanies.com





## Scioto Ridge Wind Farm

Roundhead, McDonald, Taylor Creek and Lynn Townships - Hardin County, Ohio. Richland and Rushcreek Townships - Logan County, Ohio.

Figure 05-1: Geography and Topography

Sheet 8 of 19

June 2013

- Wind Turbine
- Temporary Met Tower
- Water Well
- Oil/Gas Well
- Residence
- Library
- Collection Line
- Access Road
- Collector Substation
- Laydown Yard
- Delineated Stream/Wetland
- Airport
- Cemetery
- School
- Golf Course
- Local Park
- State Nature Preserve
- State Park
- Population Center
- 5-Mile Radius

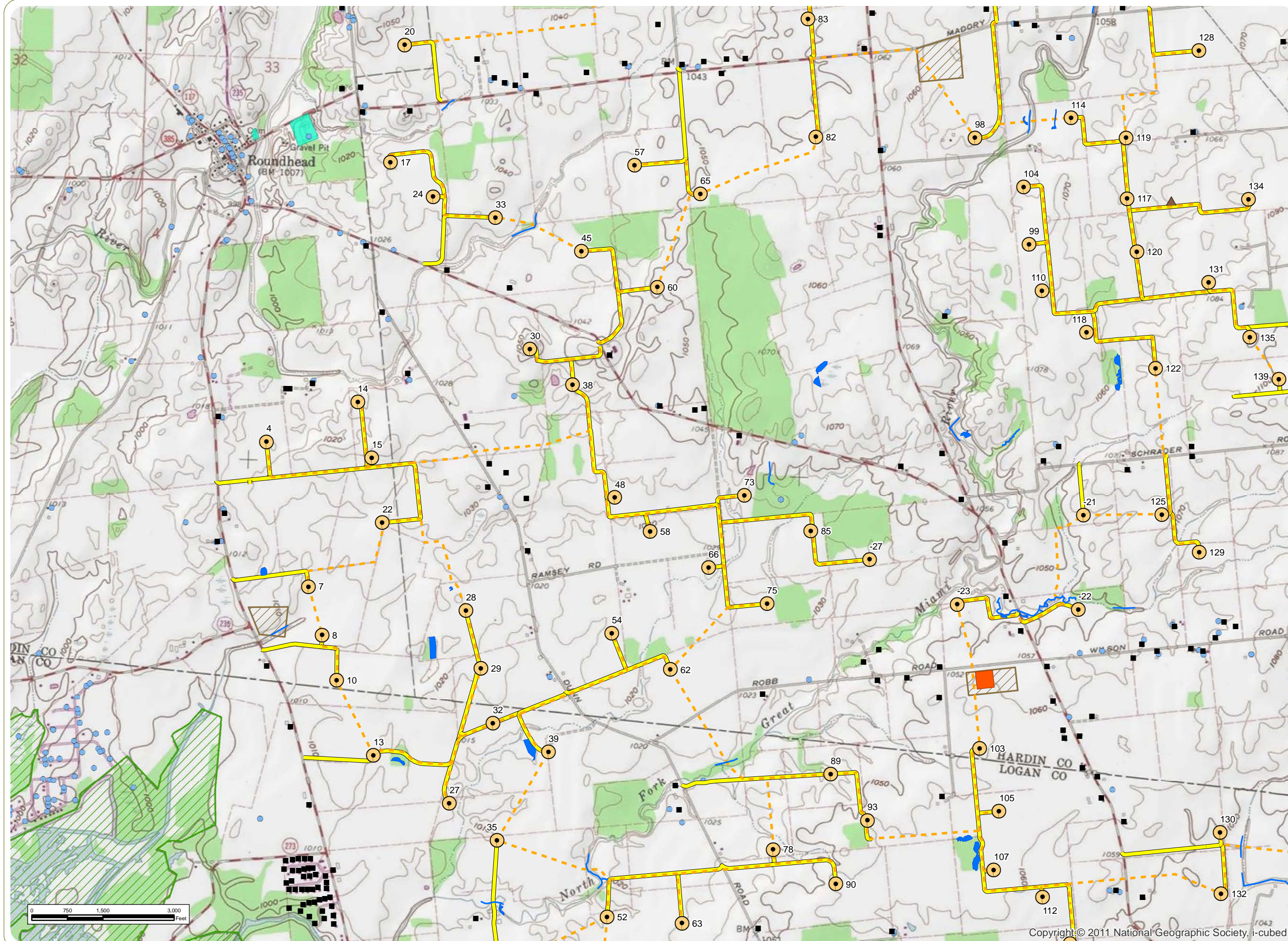
### Notes:

1. Base Map: USGS Topographic Maps via ESRI "USA Topo Maps" Map Service.
2. Delineated wetlands and streams provided by Cardno ENTRIX. Facility and residence shapefiles provided by Applicant. Other data obtained from public sources by edr.
3. Map Scale: 1:24,000

**everpower**







**Scioto Ridge Wind Farm**  
Roundhead, McDonald, Taylor Creek and Lynn Townships - Hardin County, Ohio. Richland and Rushcreek Townships - Logan County, Ohio.

Figure 05-1: Geography and Topography

Sheet 9 of 19

June 2013

- Wind Turbine
- Temporary Met Tower
- Water Well
- Oil/Gas Well
- Residence
- Library
- Collection Line
- Access Road
- Collector Substation
- Laydown Yard
- Delineated Stream/Wetland
- Airport
- Cemetery
- School
- Golf Course
- Local Park
- State Nature Preserve
- State Park
- Population Center
- 5-Mile Radius

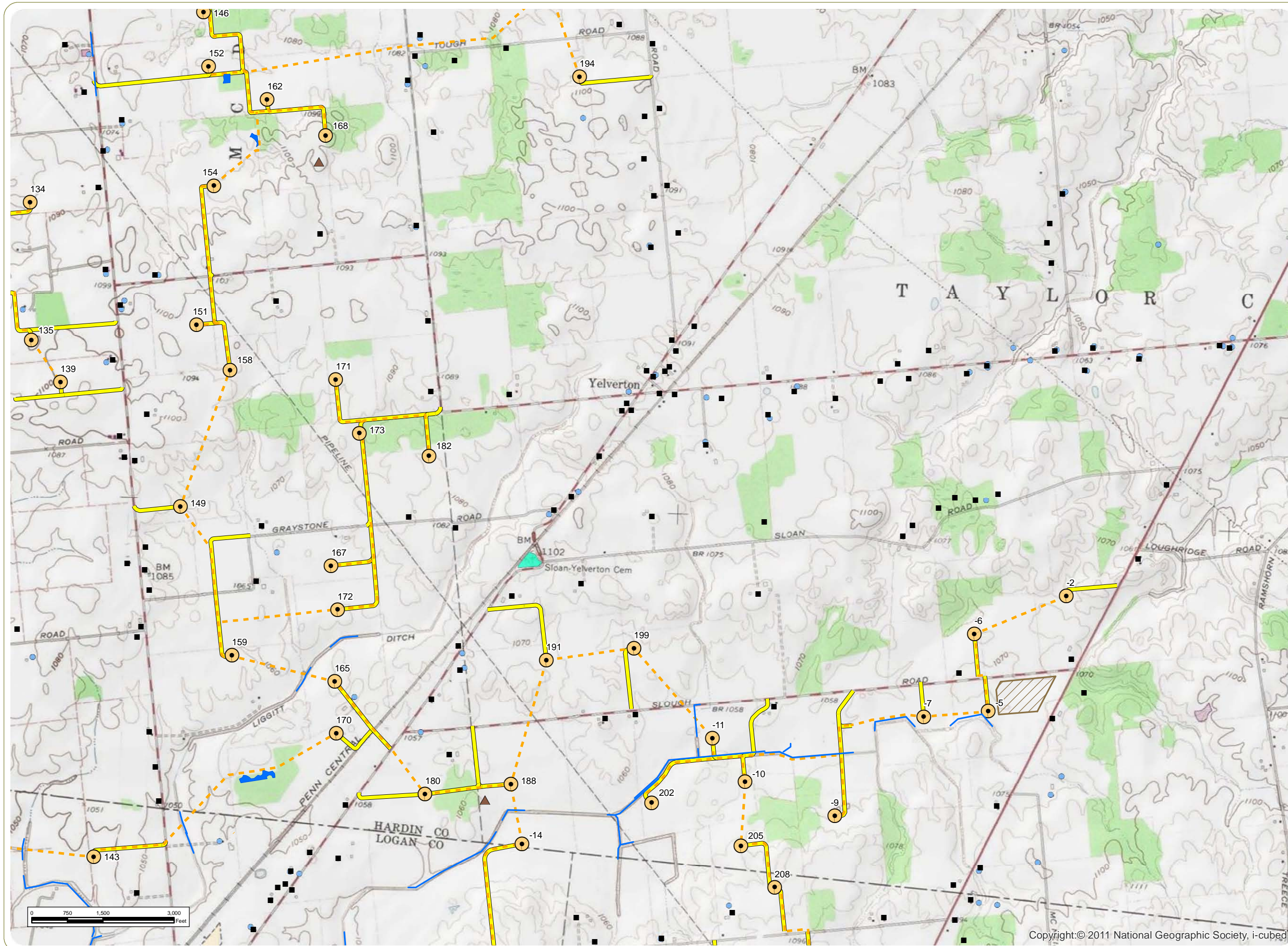
Notes:

1. Base Map: USGS Topographic Maps via ESRI "USA Topo Maps" Map Service.
2. Delineated wetlands and streams provided by Cardno ENTRIX. Facility and residence shapefiles provided by Applicant. Other data obtained from public sources by edr.
3. Map Scale: 1:24,000



[www.edrcompanies.com](http://www.edrcompanies.com)





## Scioto Ridge Wind Farm

Roundhead, McDonald, Taylor Creek and Lynn Townships - Hardin County, Ohio. Richland and Rushcreek Townships - Logan County, Ohio.

Figure 05-1: Geography and Topography

Sheet 10 of 19

June 2013

- Wind Turbine
- Temporary Met Tower
- Water Well
- Oil/Gas Well
- Residence
- Library
- Collection Line
- Access Road
- Collector Substation
- Laydown Yard
- Delineated Stream/Wetland
- Airport
- Cemetery
- School
- Golf Course
- Local Park
- State Nature Preserve
- State Park
- Population Center
- 5-Mile Radius

### Notes:

1. Base Map: USGS Topographic Maps via ESRI "USA Topo Maps" Map Service.
2. Delineated wetlands and streams provided by Cardno ENTRIX. Facility and residence shapefiles provided by Applicant. Other data obtained from public sources by edr.
3. Map Scale: 1:24,000

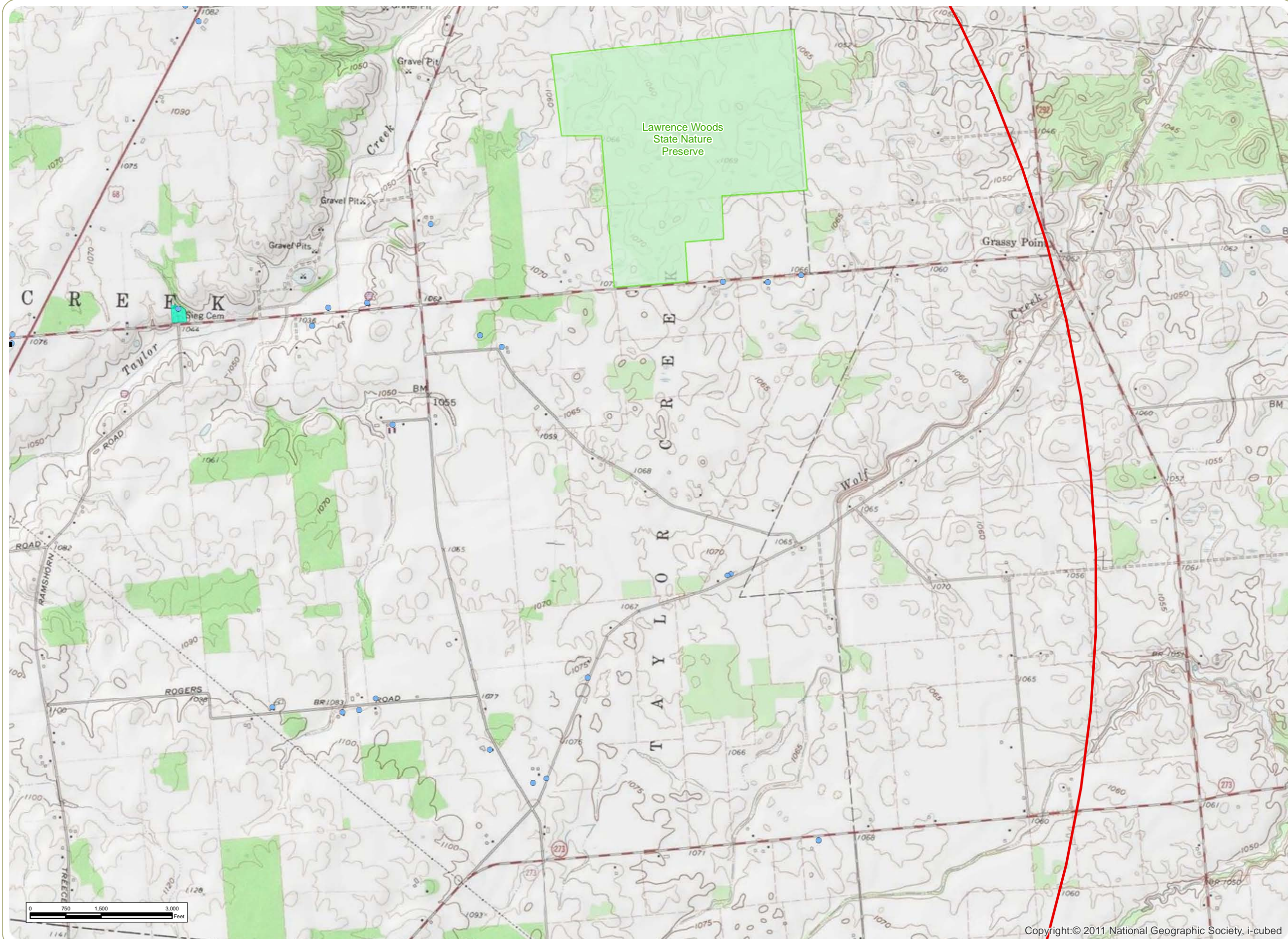
everpower



Copyright © 2011 National Geographic Society, i-cubed

www.edrcompanies.com





## Scioto Ridge Wind Farm

Roundhead, McDonald, Taylor Creek and Lynn Townships - Hardin County, Ohio. Richland and Rushcreek Townships - Logan County, Ohio.

Figure 05-1: Geography and Topography

Sheet 11 of 19

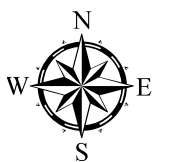
June 2013

- Wind Turbine
- Temporary Met Tower
- Water Well
- Oil/Gas Well
- Residence
- Library
- Collection Line
- Access Road
- Collector Substation
- Laydown Yard
- Delineated Stream/Wetland
- Airport
- Cemetery
- School
- Golf Course
- Local Park
- State Nature Preserve
- State Park
- Population Center
- 5-Mile Radius

### Notes:

1. Base Map: USGS Topographic Maps via ESRI "USA Topo Maps" Map Service.
2. Delineated wetlands and streams provided by Cardno ENTRIX. Facility and residence shapefiles provided by Applicant. Other data obtained from public sources by edr.
3. Map Scale: 1:24,000

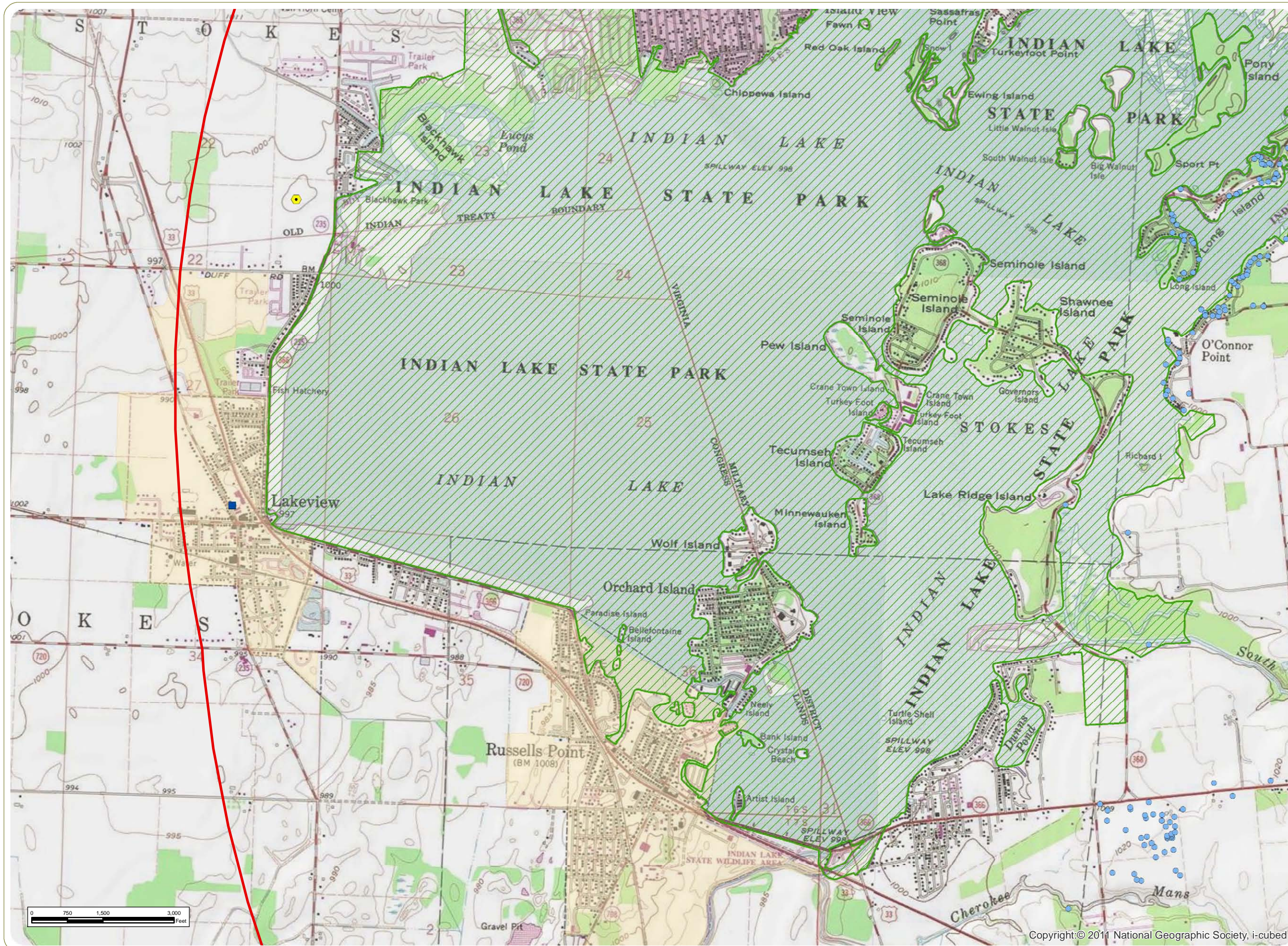
everpower



www.edrcompanies.com

Copyright © 2011 National Geographic Society, i-cubed





**Scioto Ridge Wind Farm**  
Roundhead, McDonald, Taylor Creek and Lynn Townships - Hardin County, Ohio. Richland and Rushcreek Townships - Logan County, Ohio.

Figure 05-1: Geography and Topography

Sheet 12 of 19

June 2013

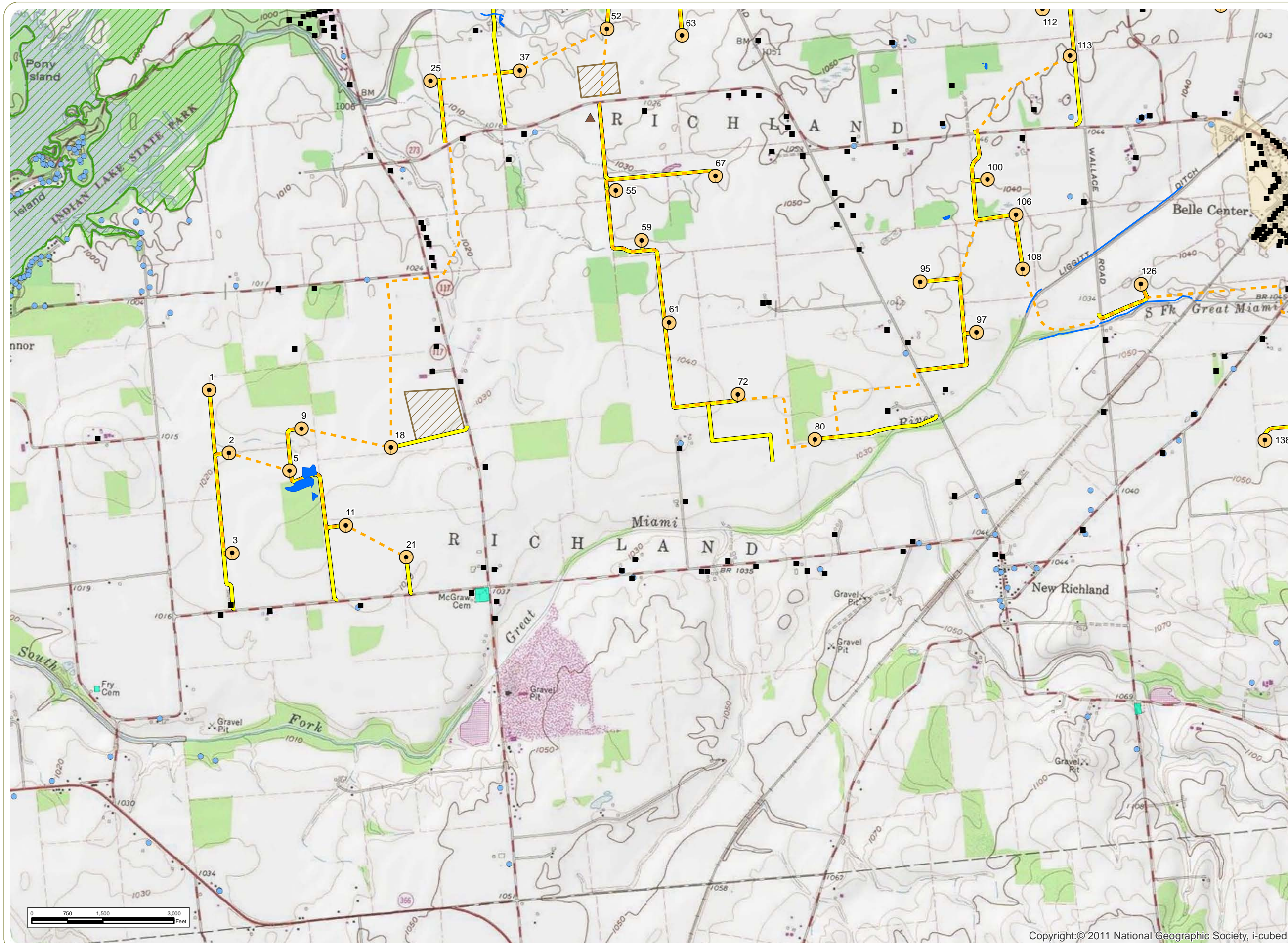
- Wind Turbine
- Temporary Met Tower
- Water Well
- Oil/Gas Well
- Residence
- Library
- Collection Line
- Access Road
- Collector Substation
- Laydown Yard
- Delineated Stream/Wetland
- Airport
- Cemetery
- School
- Golf Course
- Local Park
- State Nature Preserve
- State Park
- Population Center
- 5-Mile Radius

Notes:

1. Base Map: USGS Topographic Maps via ESRI "USA Topo Maps" Map Service.
2. Delineated wetlands and streams provided by Cardno ENTRIX. Facility and residence shapefiles provided by Applicant. Other data obtained from public sources by edr.
3. Map Scale: 1:24,000







## Scioto Ridge Wind Farm

Roundhead, McDonald, Taylor Creek and Lynn Townships - Hardin County, Ohio. Richland and Rushcreek Townships - Logan County, Ohio.

Figure 05-1: Geography and Topography

Sheet 13 of 19

June 2013

- Wind Turbine
- Temporary Met Tower
- Water Well
- Oil/Gas Well
- Residence
- Library
- Collection Line
- Access Road
- Collector Substation
- Laydown Yard
- Delineated Stream/Wetland
- Airport
- Cemetery
- School
- Golf Course
- Local Park
- State Nature Preserve
- State Park
- Population Center
- 5-Mile Radius

### Notes:

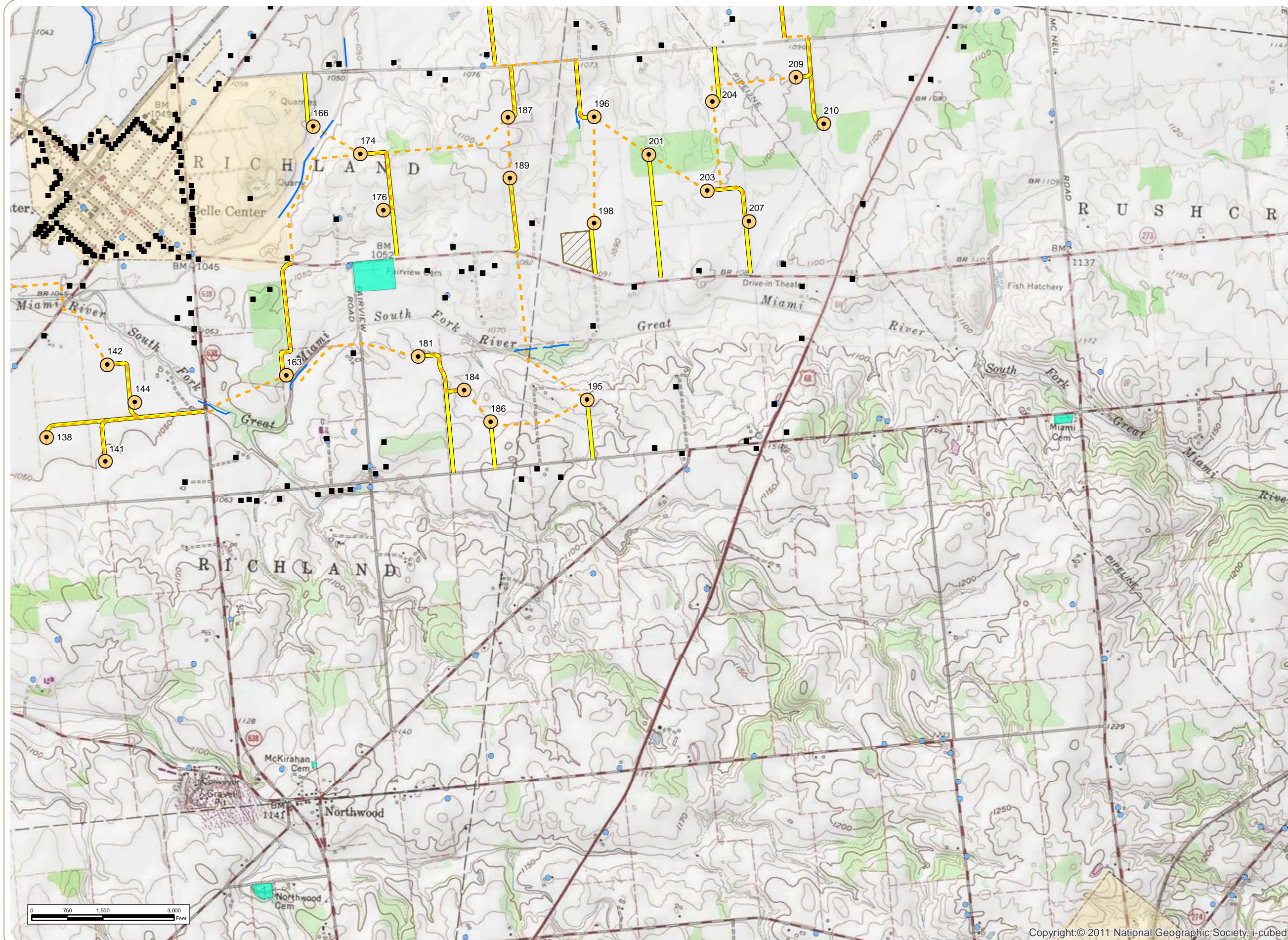
1. Base Map: USGS Topographic Maps via ESRI "USA Topo Maps" Map Service.
2. Delineated wetlands and streams provided by Cardno ENTRIX. Facility and residence shapefiles provided by Applicant. Other data obtained from public sources by edr.
3. Map Scale: 1:24,000

**everpower**



www.edrcompanies.com





## Scioto Ridge Wind Farm

Roundhead, McDonald, Taylor Creek and Lynn Townships - Hardin County, Ohio. Richland and Rushcreek Townships - Logan County, Ohio.

Figure 05-1: Geography and Topography

Sheet 14 of 19

June 2013

- Wind Turbine
- Temporary Met Tower
- Water Well
- Oil/Gas Well
- Residence
- Library
- Collection Line
- Access Road
- Collector Substation
- Laydown Yard
- Delineated Stream/Wetland
- Airport
- Cemetery
- School
- Golf Course
- Local Park
- State Nature Preserve
- State Park
- Population Center
- 5-Mile Radius

### Notes:

1. Base Map: USGS Topographic Maps via ESRI "USA Topo Maps" Map Service.
2. Delineated wetlands and streams provided by Cardno ENTRIX. Facility and residence shapefiles provided by Applicant. Other data obtained from public sources by edr.
3. Map Scale: 1:24,000

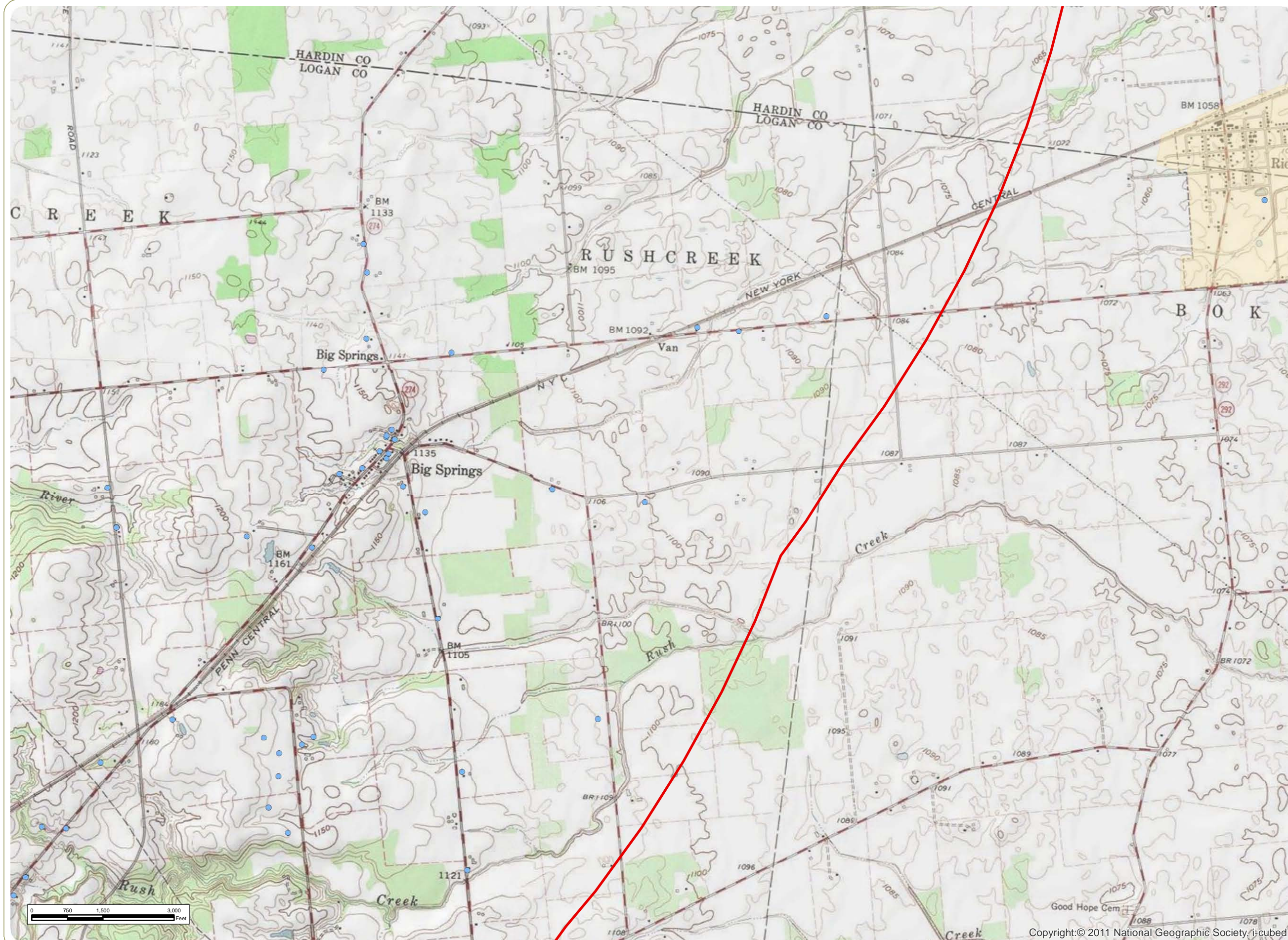
**everpower**



Copyright © 2011 National Geographic Society, i-cubed

[www.edrcompanies.com](http://www.edrcompanies.com)





## Scioto Ridge Wind Farm

Roundhead, McDonald, Taylor Creek and Lynn Townships - Hardin County, Ohio. Richland and Rushcreek Townships - Logan County, Ohio.

Figure 05-1: Geography and Topography

Sheet 15 of 19

June 2013

- Wind Turbine
- Temporary Met Tower
- Water Well
- Oil/Gas Well
- Residence
- Library
- Collection Line
- Access Road
- Collector Substation
- Laydown Yard
- Delineated Stream/Wetland
- Airport
- Cemetery
- School
- Golf Course
- Local Park
- State Nature Preserve
- State Park
- Population Center
- 5-Mile Radius

### Notes:

1. Base Map: USGS Topographic Maps via ESRI "USA Topo Maps" Map Service.
2. Delineated wetlands and streams provided by Cardno ENTRIX. Facility and residence shapefiles provided by Applicant. Other data obtained from public sources by edr.
3. Map Scale: 1:24,000

everpower



Copyright © 2011 National Geographic Society, i-cubed

www.edrcompanies.com



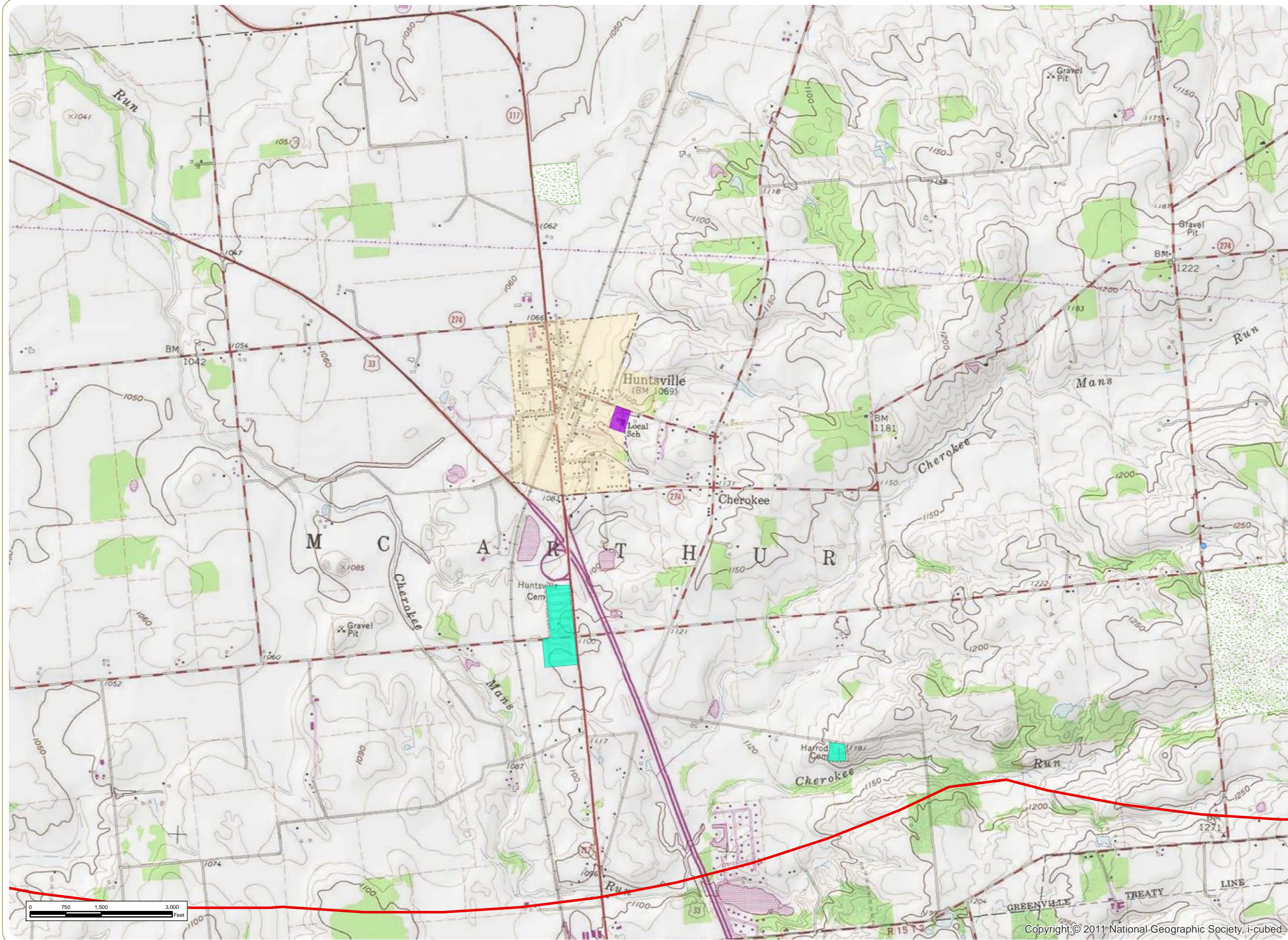
Roundhead, McDonald,  
Taylor Creek and Lynn  
Townships - Hardin County,  
Ohio. Richland and  
Rushcreek Townships -  
Logan County, Ohio.

Sheet 16 of 19  
June 2013



1. Base Map: USGS Topographic Maps via ESRI "USA Topo Maps" Map Service.
2. Delineated wetlands and streams provided by Cardno ENTRIX. Facility and residence shapefiles provided by Applicant. Other data obtained from public sources by edr.
3. Map Scale: 1:24,000





## Scioto Ridge Wind Farm

Roundhead, McDonald, Taylor Creek and Lynn Townships - Hardin County, Ohio. Richland and Rushcreek Townships - Logan County, Ohio.

Figure 05-1: Geography and Topography

Sheet 17 of 19

June 2013

- Wind Turbine
- Temporary Met Tower
- Water Well
- Oil/Gas Well
- Residence
- Library
- Collection Line
- Access Road
- Collector Substation
- Laydown Yard
- Delineated Stream/Wetland
- Airport
- Cemetery
- School
- Golf Course
- Local Park
- State Nature Preserve
- State Park
- Population Center
- 5-Mile Radius

### Notes:

1. Base Map: USGS Topographic Maps via ESRI "USA Topo Maps" Map Service.
2. Delineated wetlands and streams provided by Cardno ENTRIX. Facility and residence shapefiles provided by Applicant. Other data obtained from public sources by edr.
3. Map Scale: 1:24,000

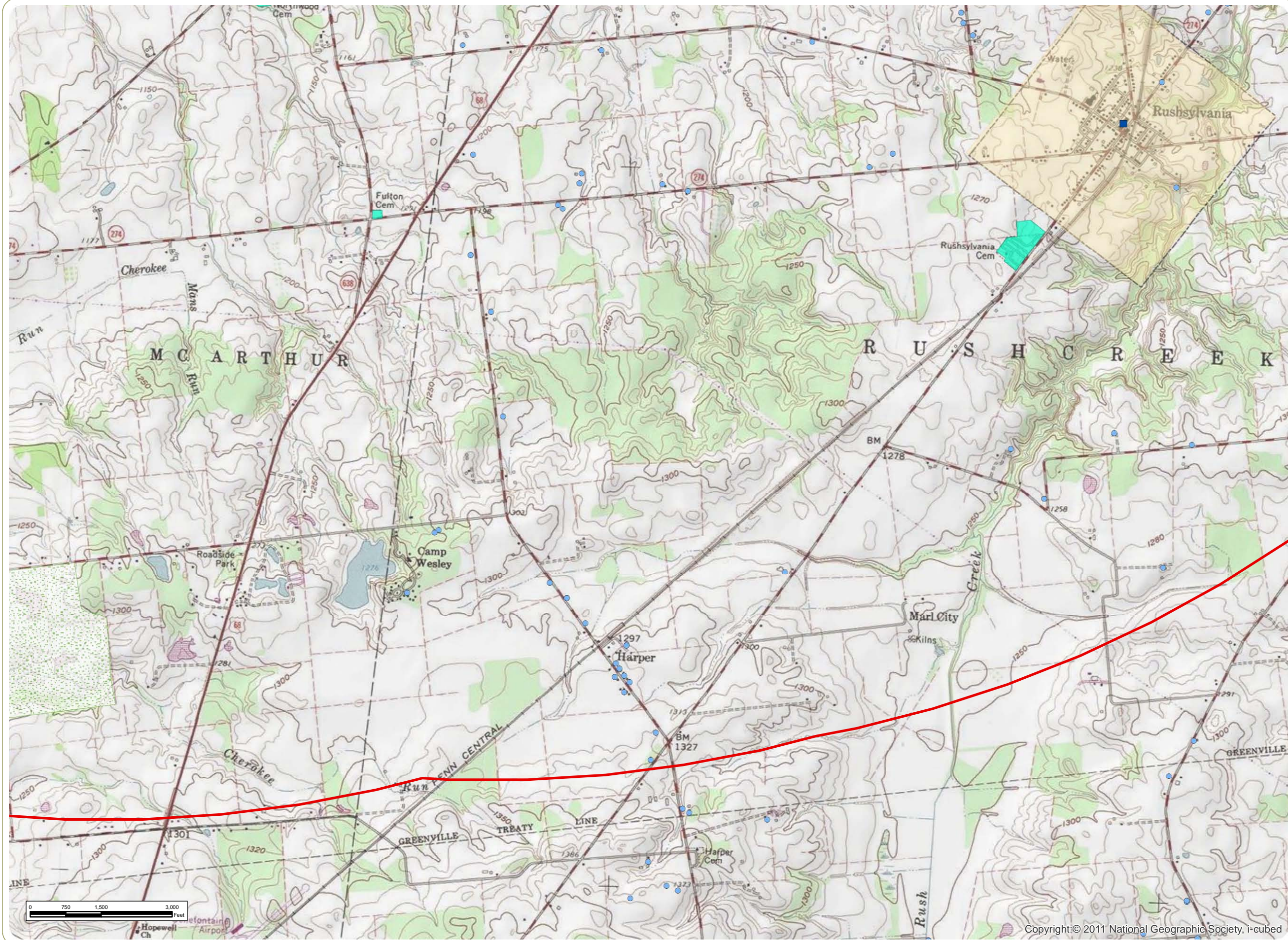
everpower



Copyright © 2011 National Geographic Society, i-cubed

www.edrcompanies.com





## Scioto Ridge Wind Farm

Roundhead, McDonald, Taylor Creek and Lynn Townships - Hardin County, Ohio. Richland and Rushcreek Townships - Logan County, Ohio.

Figure 05-1: Geography and Topography

Sheet 18 of 19

June 2013

- Wind Turbine
- Temporary Met Tower
- Water Well
- Oil/Gas Well
- Residence
- Library
- Collection Line
- Access Road
- Collector Substation
- Laydown Yard
- Delineated Stream/Wetland
- Airport
- Cemetery
- School
- Golf Course
- Local Park
- State Nature Preserve
- State Park
- Population Center
- 5-Mile Radius

### Notes:

1. Base Map: USGS Topographic Maps via ESRI "USA Topo Maps" Map Service.
2. Delineated wetlands and streams provided by Cardno ENTRIX. Facility and residence shapefiles provided by Applicant. Other data obtained from public sources by edr.
3. Map Scale: 1:24,000

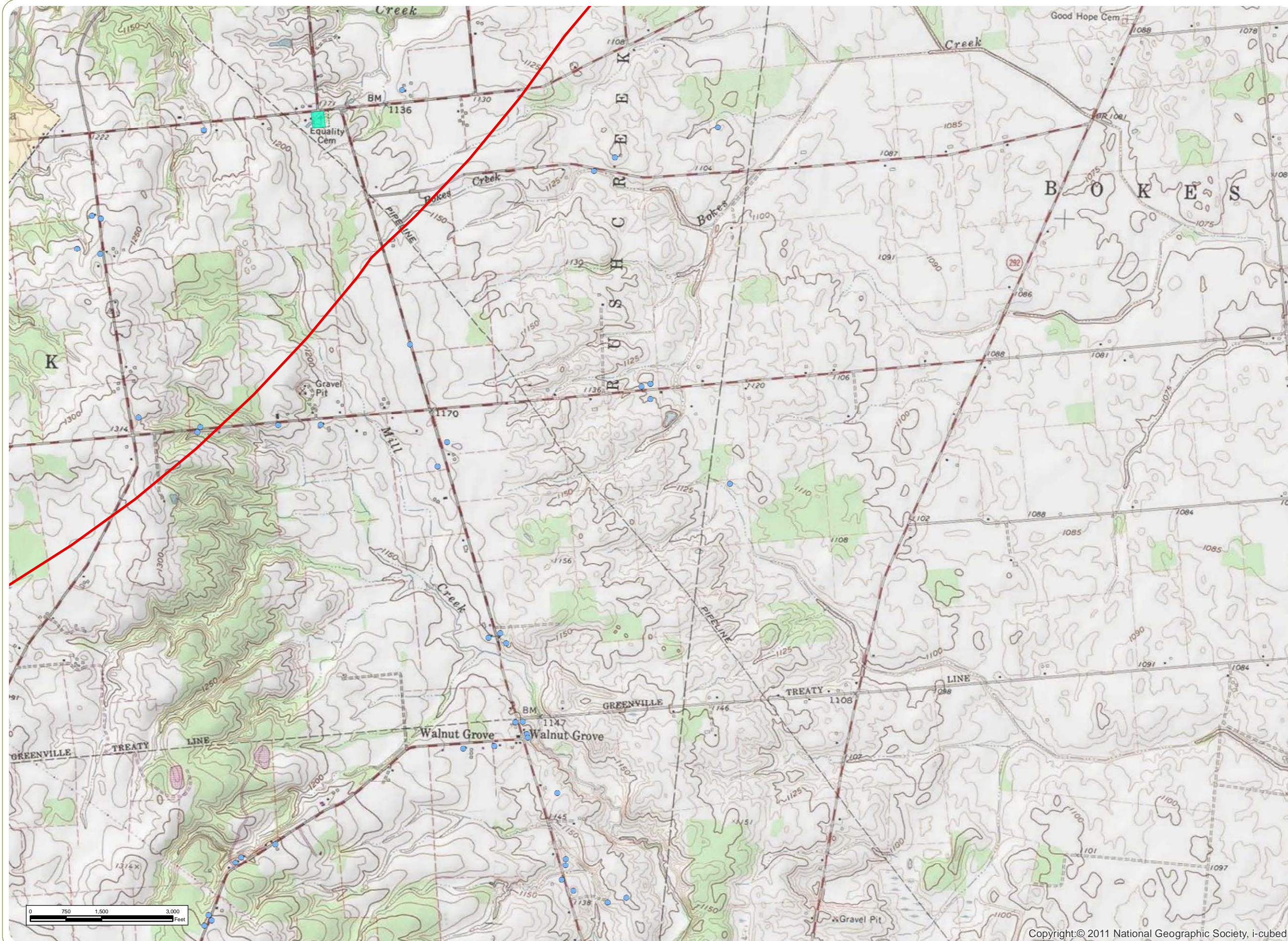
everpower



Copyright © 2011 National Geographic Society, i-cubed

www.edrcompanies.com





**Scioto Ridge Wind Farm**  
 Roundhead, McDonald, Taylor Creek and Lynn Townships - Hardin County, Ohio. Richland and Rushcreek Townships - Logan County, Ohio.

Figure 05-1: Geography and Topography

Sheet 19 of 19

June 2013

- Wind Turbine
- Temporary Met Tower
- Water Well
- Oil/Gas Well
- Residence
- Library
- Collection Line
- Access Road
- Collector Substation
- Laydown Yard
- Delineated Stream/Wetland
- Airport
- Cemetery
- School
- Golf Course
- Local Park
- State Nature Preserve
- State Park
- Population Center
- 5-Mile Radius

Notes:

1. Base Map: USGS Topographic Maps via ESRI "USA Topo Maps" Map Service.
2. Delineated wetlands and streams provided by Cardno ENTRIX. Facility and residence shapefiles provided by Applicant. Other data obtained from public sources by edr.
3. Map Scale: 1:24,000



www.edrcompanies.com



**This foregoing document was electronically filed with the Public Utilities**

**Commission of Ohio Docketing Information System on**

**6/28/2013 10:30:57 AM**

**in**

**Case No(s). 13-1177-EL-BGN**

Summary: Application Figure 05-1. Geography and Topography Sheets electronically filed by Ms. Miranda R Leppla on behalf of Hardin Wind LLC