

CONSULTANTS:

ARCHITECT:

STATE OF OHIO
SECRETARY 9839
HANSBOKER 11818
REGISTERED ARCHITECT

CONSULTANTS:

PROJECT:

Cuyahoga County Public Library
browsing is just the beginning

CUYAHOGA COUNTY
PUBLIC LIBRARY

BEACHWOOD BRANCH
RENOVATION

25501 SHAKER BOULEVARD
BEACHWOOD, OHIO 44122

ISSUED FOR: RECORD DOCUMENTS

PROJECT ISSUANCE DATE: 07-18-2012

CLIENT PROJECT NUMBER: 15313

KEY PLAN:

STANDARD ABBREVIATIONS

& ∠	And Angle	DEPT	DEPARTMENT	G	GAS	L	LOCK	PART.BD.	PARTICLEBOARD	SQ	SQUARE
@	At	DET	DETAIL	GA	GAGE	LAV	LAVATORY	P.C.	PRECAST CONCRETE	S.F.	SQUARE FOOT
⌀	Centerline	D.F.	DRINKING FOUNTAIN	GALV	GALVANIZED	LAB	LABORATORY	P.C.D.	PAPER CUP DISPENSER	S.I.	SQUARE INCH
Ø	Diameter or Round	DIA	DIAMETER	G.C.	GENERAL CONTRACTOR	LAM	LAMINATE	PERIM	PERIMETER	S.Y.	SQUARE YARD
#	Pound or Number #	DIAG	DIAGONAL	G.F.M.U.	GROUND FACE MASONRY UNITS	LIB	LIBRARY	PERP	PERPENDICULAR	S.T.C.	SOUND TRANSMISSION CLASS / COEFFICIENT
		DIM	DIMENSION	GL	GLASS	LIN	LINEAR	PLWD	PLYWOOD	STD	STANDARD
		DISP	DISPENSER	GR	GRADE	LOC	LOCATION/LOCATE	PORT	PORTABLE	STL	STEEL
		DN	DOWN	GRND	GROUND	L.P.	LOW POINT	PR	PAIR	STOR	STORAGE
		DR	DOOR	GYP	GYPSUM	LT	LIGHT	PREFAB	PREFABRICATED	STRUCT	STRUCTURAL
		D.S.	DOWNSPOUT			LT.WT.	LIGHTWEIGHT	PREFIN	PREFINISHED	SURF	SURFACE
		D.W.	DUMBWAITER			LTG	LIGHTING	PROJ	PROJECT	SUSP	SUSPENDED
		DWG(S)	DRAWING(S)					PROP	PROPERTY		
				H.B.	HOSE BIBB			P.T.	PNEUMATIC TUBE		
		E	EAST	HD	HEAD	MACH	MACHINE	PTD	PAINTED	T	THERMOSTAT
		EA	EACH	HDWD	HARDWOOD	MAS	MASONRY			T&B	TOP AND BOTTOM
		E.I.F.S.	EXTERIOR INSULATION FINISH SYSTEM	H.M.	HOLLOW METAL	MATL	MATERIAL	R	RADIUS	T&G	TONGUE AND GROOVE
		E.J.	EXPANSION JOINT	HOSP	HOSPITAL	MAX	MAXIMUM	R.A.	RETURN AIR	TAN	TANGENT
		EL	ELEVATION	H.P.	HIGH POINT	MECH	MECHANICAL	REC	RECESSED	TEL	TELEPHONE
		ELECT	ELECTRICAL	HR	HOUR	MED	MEDICINE/MEDICAL	RECEP	RECEPTACLE	TEMP	TEMPERATURE
		ELEV	ELEVATOR	H.R.	HANDRAIL	MED.CAB.	MEDICINE CABINET	RECT	RECTANGULAR	THRESH	THRESHOLD
		EMER	EMERGENCY	HORIZ	HORIZONTAL	MEMB	MEMBRANE	REF	REFRIGERATOR	THRU	THROUGH
		ENCL	ENCLOSURE	HT	HEIGHT	MEZZ	MEZZANINE	REFL	REFLECTED	TK.BD.	TACKBOARD
		EQ	EQUAL	HTG	HEATING	MFR	MANUFACTURER	REINF	REINFORCED	TOIL , T	TOILET
		EQUIP	EQUIPMENT	HTR	HEATER	MH	MANHOLE	REM	REMOVABLE	T.O.P.	TOP OF PAVEMENT
		E.T.R.	EXISTING TO REMAIN	H.V.A.C.	HEATING, VENTILATION, AIR CONDITIONING	MIN	MINIMUM	REQ'D	REQUIRED	TV	TELEVISION
		EVAC	EVACUATION			MISC	MISCELLANEOUS	REV	REVISION	TYP	TYPICAL
		E.W.C.	ELECTRIC WATER COOLER	H.W.	HOT WATER	MKR.BD.	MARKERBOARD	R.F.	RADIO FREQUENCY	U.C.	UNDER COUNTER
		EXIST	EXISTING	HW	HARDWARE	MLDG	MOULDING	RM	ROOM	UNFIN	UNFINISHED
		EXT	EXTERIOR	HYD	HYDRANT	M.O.	MASONRY OPENING	RND	ROUND	U.O.N.	UNLESS OTHERWISE NOTED
				I.D.	INSIDE DIAMETER (DIM)	MOD	MODIFIED, MODULAR	R.O.	ROUGH OPENING	UTIL	UTILITY
		F.B.	FACE BRICK	ILLUM	ILLUMINATION	M.R.G.B.	MOISTURE RESISTANT GYPSUM BOARD	R.S.T.	RUBBER STAIR TREADS	V, VAC	VACUUM
		F.C.	FOOT CONTROL	INCAND	INCANDESCENT	MTD	MOUNTED			VENT	VENTILATION
		F.C.U.	FAN COIL UNIT	INCIN	INCINERATOR	MTL	METAL	S	SOUTH	VERT	VERTICAL
		F.D.	FLOOR DRAIN	INCL	INCLUDE			S.S.	STAINLESS STEEL	VEST	VESTIBULE
		F.D.V.C.	FIRE DEPARTMENT VALVE CABINET	INFO	INFORMATION	N	NITROGEN/NORTH	S.A.	SUPPLY AIR	V.I.F.	VERIFY IN FIELD
		F.E.	FIRE EXTINGUISHER	INSUL	INSULATION	N.C.	NURSE CALL	SAN	SANITARY	VIT	VITREOUS
		F.E.C.	FIRE EXTINGUISHER CABINET	INT	INTERIOR	NEG	NEGATIVE	SCHED	SCHEDULE		
		F.H.C.	FIRE HOSE CABINET	I.P.S.	INSIDE PIPE SIZE	N.I.C.	NOT IN CONTRACT	S.C.R.	SHOWER CURTAIN ROD		
		FIN	FINISH	ISOL	ISOLATION	NO	NUMBER	S.D.	SUPPLY DIFFUSER		
		FIXT	FIXTURE	IV	INTRAVENOUS	NOM	NOMINAL	SECT	SECTION		
		FLR	FLOOR			N.T.S.	NOT TO SCALE	SGL	SINGLE	W	WEST/WATER
		FLEX	FLEXIBLE	KITCH	KITCHEN			SH	SHELVING, SHELF	W/	WITH
		FLUOR	FLUORESCENT	K.O.	KNOCK OUT	O	OXYGEN	SHR	SHOWER	W/O	WITHOUT
		F.P.	FIRE PROTECTION	K.P.	KICK PLATE	O.C.	ON CENTER	SHT	SHEET	W.C.	WATER CLOSET
		F.P.G.	FIRE PROTECTED GLAZING	K.S.	KNEE SPACE	O.D.	OUTSIDE DIAMETER(DIM)	SIM	SIMILAR	W/C	WHEEL CHAIR
		F.R.T.	FIRE RESISTANT TREATED			OFF	OFFICE	S.O.G.	SLAB ON GRADE	WD	WOOD
		FT	FOOT OR FEET			OPNG	OPENING	SPEC (S)	SPECIFICATION(S)	W.P.	WORKPOINT
		FTG	FOOTING			OPP	OPPOSITE	S&R	SHELF & ROD	W.W.F.	WELDED WIRE FABRIC
		FURN	FURNITURE			O.F.C.I.	OWNER FURNISHED, CONTRACTOR INSTALLED	S.P.T.	SPECIMEN PASS-THRU	YD	YARD
		FUT	FUTURE								

MATERIALS

NOTE:
ALL ITEMS/MATERIALS MAY NOT OCCUR IN THIS PROJECT. LIST PROVIDED FOR REFERENCE ONLY.

	UNDISTURBED EARTH OR UNDISTURBED SUBGRADE		ALUMINUM
	COMPACTED EARTH OR COMPACTED SUBGRADE		ORNAMENTAL METAL/STAINLESS STEEL
	ROCK		CONTINUOUS WOOD FRAMING
	POROUS FILL OR SUBBASE		WOOD BLOCKING
	IMPERVIOUS FILL		PLYWOOD
	DRAINAGE FILL		PARTICLE BOARD
	CAST-IN-PLACE CONCRETE		FINISHED LUMBER FOR ARCHITECTURAL WORK
	PRECAST CONCRETE		BATT INSULATION
	TOPSOIL		RIGID INSULATION
	CEMENTITIOUS DECKS AND TOPPINGS		LOOSE FILL INSULATION
	GROUT		EXTERIOR INSULATION AND FINISH SYSTEM
	BRICK		FIBROUS FIRE SAFING
	GLAZED BRICK		GLASS
	STRUCTURAL CLAY TILE UNIT MASONRY		PLASTIC GLAZING
	GLAZED STRUCTURAL CLAY TILE UNIT MASONRY		LATH AND PLASTER
	CONCRETE UNIT MASONRY		GYPSUM BOARD
	GLAZED CONCRETE UNIT MASONRY		CERAMIC TILE
	GLASS UNIT MASONRY		TERRAZZO
	CUT STONE		ACOUSTICAL CEILING
	FIREBRICK		RESILIENT TILE
	CAST STONE		CARPET
	STEEL		

GRAPHIC SYMBOLS

FINISHED CONTOURS		DRAWING BREAK LINE		WORK POINT	
EXISTING CONTOURS		MATCH LINE INDICATOR		ROOM NUMBER SYMBOL	
CONTRACT LIMIT LINE		HIDDEN LINE		INTERIOR ELEVATION VIEW INDICATOR	
PROPERTY LINE		1. ITEMS ABOVE OR BEYOND		ELEV. VIEW	
ELEVATION INDICATORS		2. ITEMS NOT IN CONTRACT (N.I.C.)		ELEV. NO.	
FINISH ELEVATION		3. ITEMS BEING DEMOLISHED		SHEET NO.	
EXISTING ELEVATION		ELEVATION DATUM		DETAIL LETTER	
FENCE		NEW		DRAWING NO.	
EXISTING		EXISTING		SECTION NO.	
WINDOW & LOUVER SYMBOL		WINDOW & LOUVER SYMBOL		DRAWING NO.	
OPENING SYMBOL (SEE OPENING SCHEDULE)		OPENING SYMBOL (SEE OPENING SCHEDULE)		SECTION INDICATOR	
EQUIPMENT SYMBOL (SEE EQUIPMENT SCHEDULE)		EQUIPMENT SYMBOL (SEE EQUIPMENT SCHEDULE)		INTERIOR/EXTERIOR ELEVATION TITLE	
WALL TYPE SYMBOL (SEE PARTITION SCHEDULE)		WALL TYPE SYMBOL (SEE PARTITION SCHEDULE)		SECTION/DETAIL TITLE	
PARTITION NUMBER		PARTITION NUMBER			

FLOOR PLAN LEGEND

NEW PARTITION		NEW DOOR AND DOOR NUMBER		
PATCH TO MATCH EXIST. PARTITION		POCKET DOOR		
EXISTING PARTITION TO REMAIN		CASED OPENING		
EXISTING DOOR AND FRAME TO REMAIN		BIFOLD DOORS		
EXISTING DOOR AND FRAME TO BE REMOVED		SLIDING DOOR		



- ① EXISTING CURB TO BE REMOVED. REFER TO CIVIL DRAWINGS.
- ② AREA OF PAVING/SITE TO BE REMOVED. REFER TO TO CIVIL DRAWINGS.
- ③ REMOVE EXISTING SIDEWALK. REFER TO CIVIL DRAWINGS.
- ④ REMOVE EXISTING CURB RAMPS. REFER TO CIVIL DRAWINGS.
- ⑤ REMOVE EXISTING CONCRETE COLUMN AND FOOTER TO SUBGRADE; SEE DETAIL 2/A1-0.
- ⑥ REMOVE FENCE, GATE AND ALL RELATED ATTACHMENTS
- ⑦ REMOVE AND RELOCATE EXISTING BENCHES; SEE SITE PLAN A1-1 FOR LOCATION
- ⑧ REMOVE AND RELOCATE WALL PLAQUES; SEE SITE PLAN A1-1 FOR LOCATION. PATCH WALL AS REQUIRED.
- ⑨ REMOVE EXISTING PAVERS; COORDINATE WITH SITE PLAN A1-1 FOR PAVERS TO BE RELOCATED
- ⑩ REMOVE EXISTING CANOPY AND COMPONENTS
- ⑪ REMOVE PORTION OF EXISTING BRICK GARDEN WALL AND RELATED FOUNDATION

 NORTH

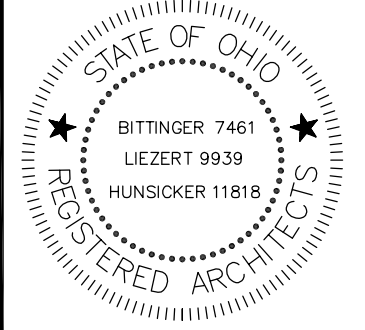
ENLARGED
DEMOLITION PLAN

2
A1-0 SCALE: 1/2" = 1'-0"

REVISIONS:

PROJECT NUMBER: 15313

DRAWN BY: JPR	DRAWING NUMBER: A1-0
CHECKED BY:	



CONSULTANTS:

PROJECT:



Cuyahoga County Public Library
browsing is just the beginning

BEACHWOOD BRANCH RENOVATION

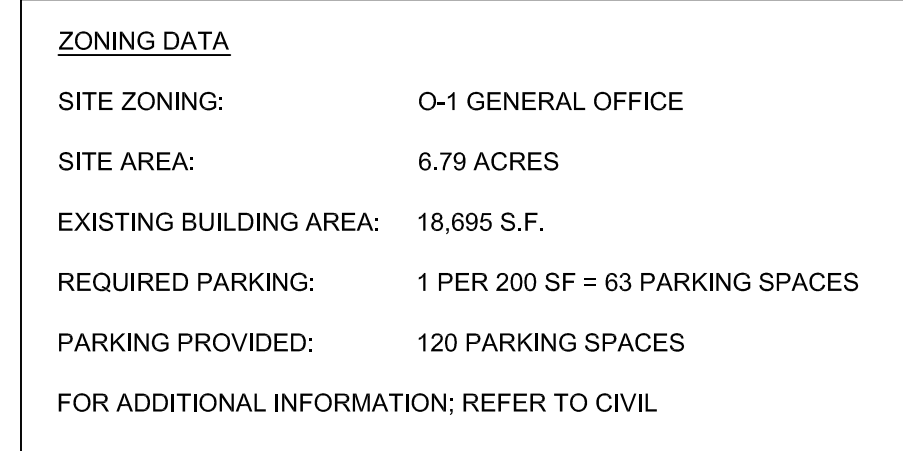
25501 SHAKER BOULEVARD
BEACHWOOD, OHIO 44122

ISSUED FOR: RECORD DOCUMENTS

PROJECT ISSUANCE DATE: 07-18-2012

CLIENT PROJECT NUMBER: 15313

KEY PLAN:



SITE PLAN KEYNOTES:

- ① NEW PAVING; REFER TO CIVIL DRAWINGS
- ② NEW SIDEWALK; REFER TO CIVIL DRAWINGS
- ③ NEW CURB RAMP; REFER TO CIVIL DRAWINGS
- ④ NEW FENCE WITH GATE
- ⑤ RELOCATED EXISTING BENCHES
- ⑥ RELOCATED EXISTING PLAQUES; REFER TO 2/A-1
- ⑦ LINE OF NEW CANOPY ABOVE
- ⑧ NEW BOLLARD, REFER TO CIVIL DRAWINGS.
- ⑨ RELOCATED EXISTING SITE PAVERS
- ⑩ PATCH & INFILL EXISTING CONCRETE SIDEWALK WHERE CANOPY COLUMNS WERE REMOVED. SEE DETAIL 4041-A
- ⑪ NEW BRICK TO MATCH EXISTING BRICK AT GARDEN WALL END. SEE DETAIL 2/A-1
- ⑫ NEW BRICK PAVERS

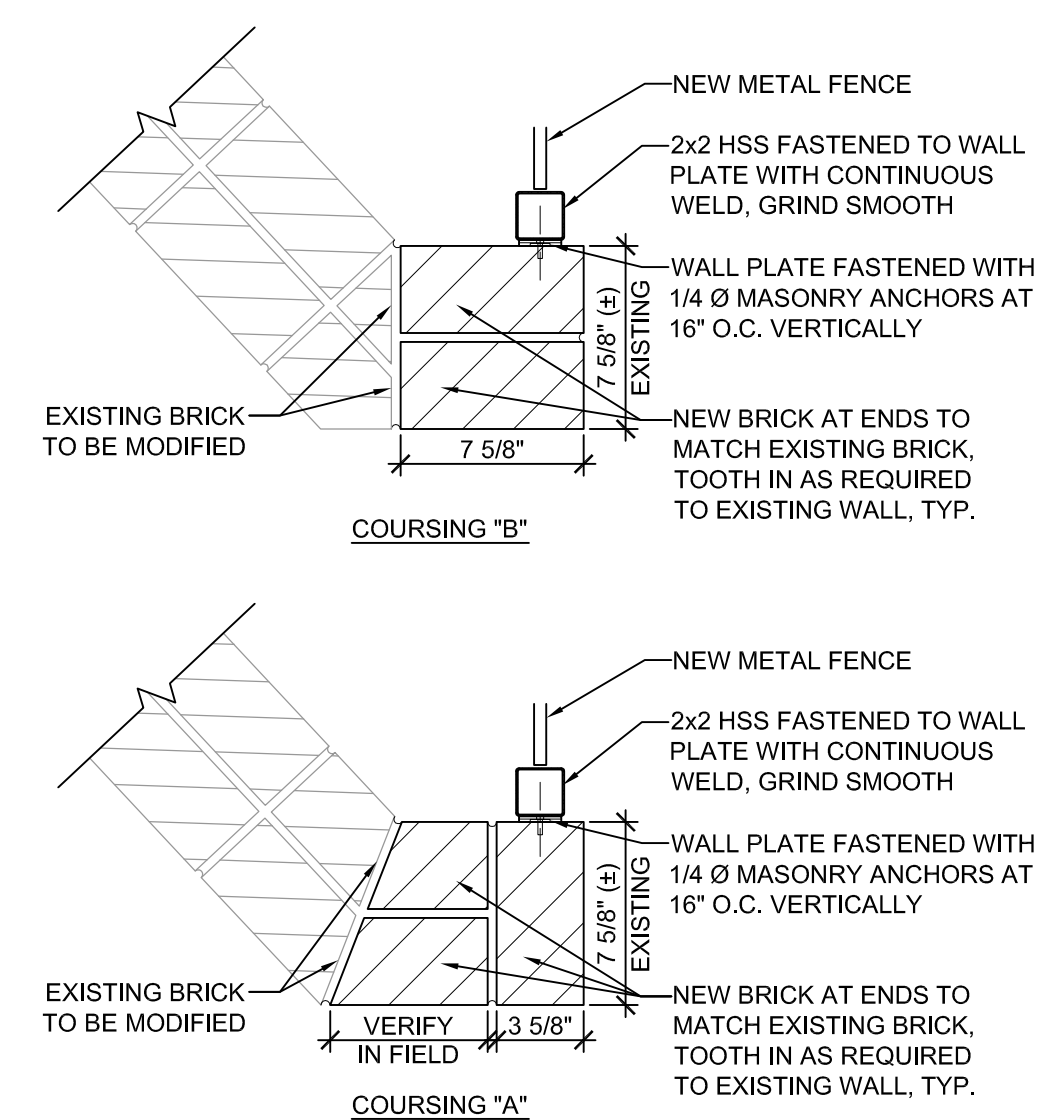
1
A1-1

SITE PLAN

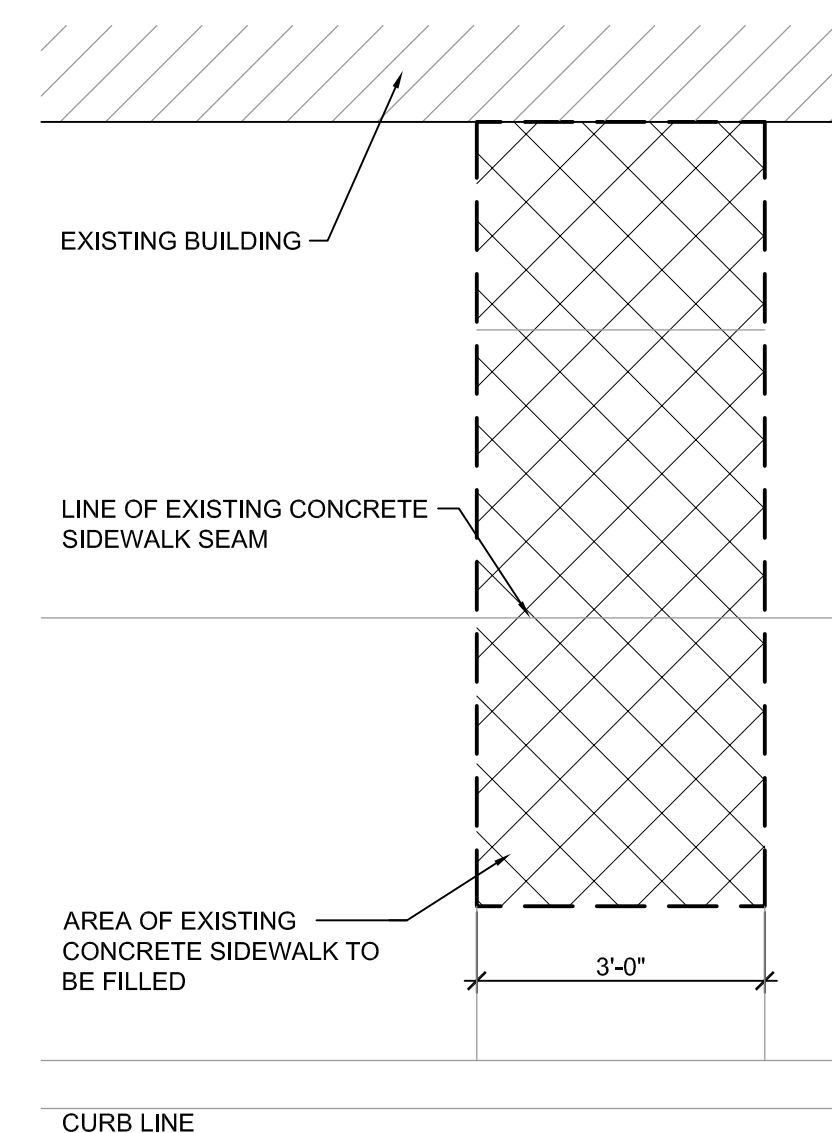
SCALE: 1" = 20'-0"



2 GARDEN WALL ELEVATION
A1-1 SCALE: 1/2" = 1'-0"



3 GARDEN WALL SECTION
A1-1 SCALE: 1 1/2" = 1'-0"



4 ENLARGED PLAN
A1-1 SCALE: 1/2" = 1'-0"

BID PACKAGE NUMBER:

REVISIONS:

ISS REV	PURPOSE	DATE
1	ISSUED FOR PERMIT	09-09-2011
2	ISSUED FOR BID	09-30-2011
3	RECORD DRAWINGS	07-18-2012

PROJECT NUMBER: 15313

DRAWING TITLE:

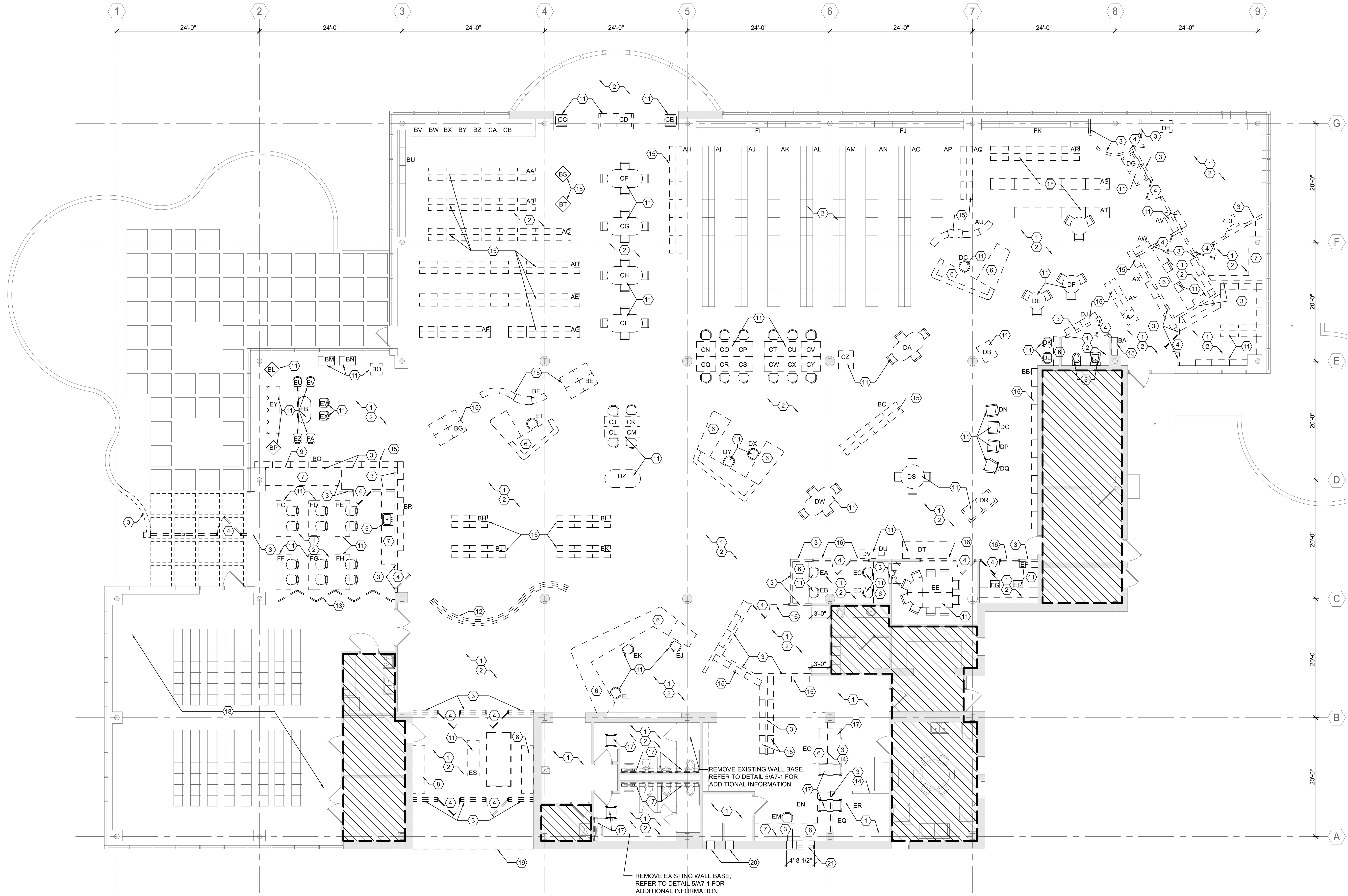
SITE PLAN

DRAWN BY:

DRAWING NUMBER

CHECKED BY _____

A1-1



**FIRST FLOOR
DEMOLITION PLAN**
SCALE: 1/8" = 1'-0"
NORTH

GENERAL DEMOLITION NOTES:

- CONTRACTOR SHALL COORDINATE DEMOLITION WITH OWNER; SALVAGE AND TURN OVER TO OWNER DOORS, HARDWARE, TOILET ACCESSORIES, CURTAIN TRACKS, LIGHT FIXTURES AND OTHER ITEMS DESIGNATED BY OWNER.
- DISPOSITION OF MECHANICAL, PLUMBING, GAS, AIR, VAC, PIPING, FIRE PROTECTION AND ELECTRICAL ITEMS ENCOUNTERED IN AREAS TO BE DEMOLISHED ARE DESCRIBED IN RESPECTIVE DRAWINGS AND SPECIFICATIONS. CONTRACTOR SHALL COORDINATE WORK WITH ALL TRADES.
- WALLS, DOORS, FIXTURES, ETC. TO BE REMOVED ARE SHOWN DASHED. SELECTED ITEMS ARE LABELED TO IDENTIFY THE ITEM TO BE REMOVED.
- LOOSE EQUIPMENT OR FURNITURE NOT IDENTIFIED FOR REMOVAL, RE-USE OR RELOCATION TO BE TURNED OVER TO OWNER.
- INSTALL TEMPORARY DUST PARTITIONS TO SEPARATE DEMOLITION AREAS FROM OCCUPIED SPACE.
- REFER TO CIVIL, STRUCTURAL, MECHANICAL AND ELECTRICAL DRAWINGS FOR ADDITIONAL DEMOLITION ITEMS AND REQUIREMENTS.
- REMOVE EXISTING FLOOR AND BASE MATERIALS IN AREAS SCHEDULED TO RECEIVE NEW FLOORING.
- REMOVE EXISTING CEILING MATERIALS AND SUPPORT SYSTEM IN AREAS SCHEDULED TO RECEIVE NEW CEILING.
- DEMOLITION CONTRACTOR TO VERIFY LOCATION OF ALL UNDERGROUND UTILITIES. NOTIFY OWNER AND ARCHITECT OF ANY DISCREPANCIES.
- REMOVE ALL DEBRIS, RUBBISH, AND OTHER MATERIALS RESULTING FROM DEMOLITION OPERATIONS IN ACCORDANCE WITH LOCAL, STATE, AND FEDERAL LAWS FROM THE PROJECT SITE. BURNING OF REMOVED MATERIALS IS NOT PERMITTED ON PROJECT SITE.
- COORDINATE WITH OWNER FOR SHUTOFF, CAPPING AND CONTINUATION OF UTILITY SERVICES AS REQUIRED. DO NOT INTERRUPT EXISTING UTILITIES SERVING OCCUPIED OR FACILITIES USED.
- MAKE PORTABLE FIRE EXTINGUISHER AVAILABLE DURING DEMOLITION PROCESS.
- USE OF EXPLOSIVES IS NOT PERMITTED.
- COMPLY WITH ALL GOVERNING REGULATIONS PERTAINING TO ENVIRONMENTAL PROTECTION (FEDERAL, STATE AND LOCAL).

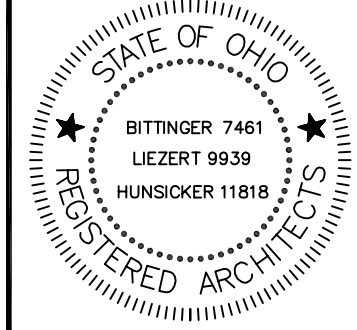
 DENOTES AREA WITH NO WORK

DEMOLITION KEYNOTES:

- REMOVE EXISTING FLOORING MATERIAL AND ADHESIVES DOWN TO EXISTING CONCRETE. COORDINATE LOCATION WITH FINISH PLAN (A7-1) WHERE NEW CARPET AND EXISTING CARPET MEET. CONTRACTOR SHALL BE RESPONSIBLE FOR ALL FLOORING PREP TO RECEIVE NEW FLOORING MATERIAL.
- REMOVE EXISTING ACOUSTIC TILE, CEILING GRID AND ALL ATTACHMENTS ALONG WITH GYPSUM BOARD SOFFITS. COORDINATE LOCATION WITH REFLECTED CEILING PLAN (A9-1). REMOVE EXISTING LIGHTING AND DIFFUSERS, SEE MECHANICAL, PLUMBING AND ELECTRICAL DRAWINGS.
- REMOVE EXISTING WALL CONSTRUCTION, FINISH MATERIAL AND WALL PROTECTION WHERE REQUIRED.
- REMOVE EXISTING DOOR, FRAME, HARDWARE AND ALL RELATED ITEMS. REVIEW WITH OWNER FOR STOCKPILING.
- REMOVE EXISTING PLUMBING FIXTURE; REFER TO PLUMBING DRAWINGS. PATCH HOLES IN FLOOR AND/OR WALL AS REQUIRED. SEE MECHANICAL DRAWINGS FOR CAPPING.
- REMOVE EXISTING MILLWORK. COORDINATE RETURN OF ANY ITEMS WITH OWNER.
- REMOVE EXISTING CABINERY. COORDINATE RETURN/REUSE WITH OWNER.
- REMOVE EXISTING DISPLAY CASE WITH LIGHTING.
- REMOVE SIGNAGE, TURN OVER TO OWNER.
- REMOVE EXISTING CORNER GUARD, PATCH WALL TO RECEIVE NEW FINISH.
- REMOVE AND SALVAGE EXISTING FURNITURE FOR RELOCATION. NOT IN CONTRACT, SHOWN FOR REFERENCE ONLY.
- REMOVE EXISTING WALL CONSTRUCTION IN ITS ENTIRETY. CAREFULLY REMOVE AND CATALOG ALL GLASS BLOCK, CLEAN AND STORE FOR REINSTALLATION. SEE PLAN FOR NEW LOCATION.
- REMOVE EXISTING FOLDING PARTITION IN ITS ENTIRETY INCLUDING ALL RELATED ATTACHMENTS.
- REMOVE EXISTING WOOD CAP AND TRIM ON HALF HEIGHT PARTITION.
- REMOVE AND SALVAGE EXISTING LIBRARY CASEWORK/SHELVING FOR RELOCATION. NOT IN CONTRACT, SHOWN FOR REFERENCE ONLY.
- REMOVE EXISTING HOLLOW METAL FRAME, GLAZING AND ALL RELATED ITEMS.
- REMOVE EXISTING LIGHT FIXTURE.
- REMOVE EXISTING WALL COVERING AND ADHESIVE. PREPARE WALL TO RECEIVE NEW FINISH.
- REMOVE EXISTING LIBRARY SIGNAGE ABOVE EXISTING ENTRANCE, TURN OVER TO OWNER.
- REMOVE EXISTING LIBRARY BOOK-DROPS.
- REMOVE EXISTING WINDOW, FRAME AND ALL ATTACHMENTS.


CONSULTANTS:

ARCHITECT:



CONSULTANTS:

PROJECT:

 **Cuyahoga County Public Library**
browsing is just the beginning
**CUYAHOGA COUNTY
PUBLIC LIBRARY
BEACHWOOD BRANCH
RENOVATION**
25501 SHAKER BOULEVARD
BEACHWOOD, OHIO 44122
ISSUED FOR: RECORD DOCUMENTS
PROJECT ISSUANCE DATE: 07-18-2012
CLIENT PROJECT NUMBER: 15313

KEY PLAN:

BID PACKAGE NUMBER:

REVISIONS:

ISS	REV	PURPOSE	DATE
1	1	ISSUED FOR PERMIT	09-09-2011
2	2	ISSUED FOR BID	09-30-2011
3	3	RECORD DOCUMENTS	07-18-2012

PROJECT NUMBER: 15313

DRAWING TITLE:

**FIRST FLOOR
DEMOLITION PLAN**

DRAWN BY:

JPR

CHECKED BY:

JJV

DRAWING NUMBER:

A1-2

This foregoing document was electronically filed with the Public Utilities

Commission of Ohio Docketing Information System on

6/6/2013 3:55:51 PM

in

Case No(s). 13-0152-EL-EEC

Summary: Application - Part 3 of 10 - Application to Commit Energy Efficiency/Peak Demand Reduction Programs of The Cleveland Electric Illuminating Company and Cuyahoga County Public Library electronically filed by Ms. Jennifer M. Sybyl on behalf of The Cleveland Electric Illuminating Company and Cuyahoga County Public Library