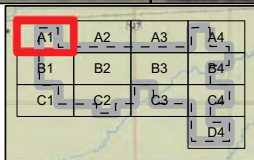


Data Source(s): Ohio Department of Transportation (2011),
 OGRIPGIS Support Center (2011),
 Ohio Statewide Imagery Program (2012),
 National Wind (2013) and Westwood Professional Services, Inc. (2013)



Westwood Professional Services, Inc.
 7599 Anagram Drive
 Eden Prairie, MN 55344
 PHONE: 953-937-5150
 FAX: 953-937-5022
 TOLL FREE: 1-888-937-5150
 www.westwoodps.com

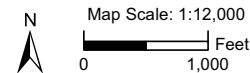


Legend

- Wind Turbine
- Met Tower
- Underground Collection Line
- Access Road
- Crane Path
- Disturbance Area Outline
- Road
- Laydown / O&M
- Step-Up Facility
- Project Boundary
- City Boundary
- Township Boundary
- County Boundary

Northwest Ohio Wind Energy

Paulding County, Ohio



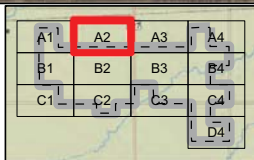
Site Layout
 Figure 3-1,A1



Data Source(s): Ohio Department of Transportation (2011),
 OGRIPGIS Support Center (2011),
 Ohio Statewide Imagery Program (2012),
 National Wind (2013) and Westwood Professional Services, Inc. (2013)



Westwood Professional Services, Inc.
 7599 Anagram Drive
 Eden Prairie, MN 55344
 PHONE 953-937-5150
 FAX 953-937-5022
 TOLL FREE 1-888-937-5150
 www.westwoodps.com



Legend

- Wind Turbine
- Met Tower
- Disturbance Area Outline
- Road
- Underground Collection Line
- Access Road
- Crane Path
- Laydown / O&M
- Step-Up Facility
- Project Boundary
- City Boundary
- Township Boundary
- County Boundary

Northwest Ohio Wind Energy

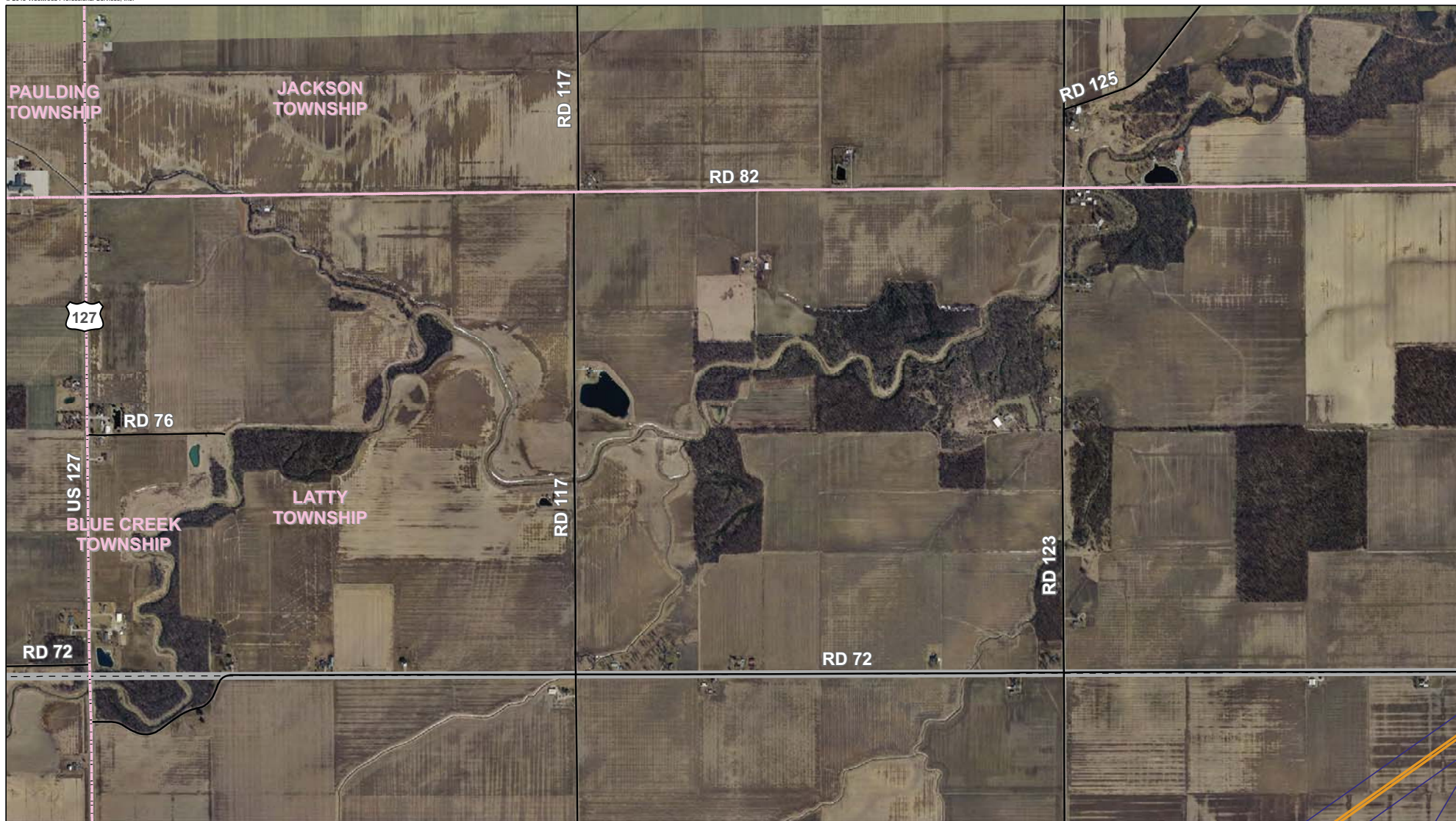
Paulding County, Ohio



Map Scale: 1:12,000
 0 1,000 Feet

Site Layout

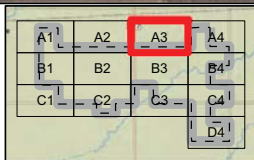
Figure 3-1,A2



Data Source(s): Ohio Department of Transportation (2011),
 OGRIP/IGIS Support Center (2011),
 Ohio Statewide Imagery Program (2012),
 National Wind (2013) and Westwood Professional Services, Inc. (2013)



Westwood Professional Services, Inc.
 7599 Anagram Drive
 Eden Prairie, MN 55344
 PHONE 953-937-5150
 FAX 953-937-5022
 TOLL FREE 1-888-937-5150
 www.westwoodps.com

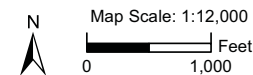


Legend

- Wind Turbine
- Met Tower
- Underground Collection Line
- Access Road
- Crane Path
- Disturbance Area Outline
- Road
- Laydown / O&M
- Step-Up Facility
- Project Boundary
- City Boundary
- Township Boundary
- County Boundary

Northwest Ohio Wind Energy

Paulding County, Ohio



Site Layout
 Figure 3-1,A3

This foregoing document was electronically filed with the Public Utilities

Commission of Ohio Docketing Information System on

5/28/2013 1:33:28 PM

in

Case No(s). 13-0197-EL-BGN

Summary: Application of Northwest Ohio Wind Energy - Appendix M Wetland Delineation Report Continued (Part 46) electronically filed by Teresa Orahod on behalf of Sally Bloomfield