

**Case No. 13-0598-EL-REN
Snoddy Field
Staff Interrogatories – Initial Set**

Question 1: In Section I.1 of the application, the Projected Gross Annual Generation Value you have submitted for the calculation of the Capacity Factor is 8 MWh.

However

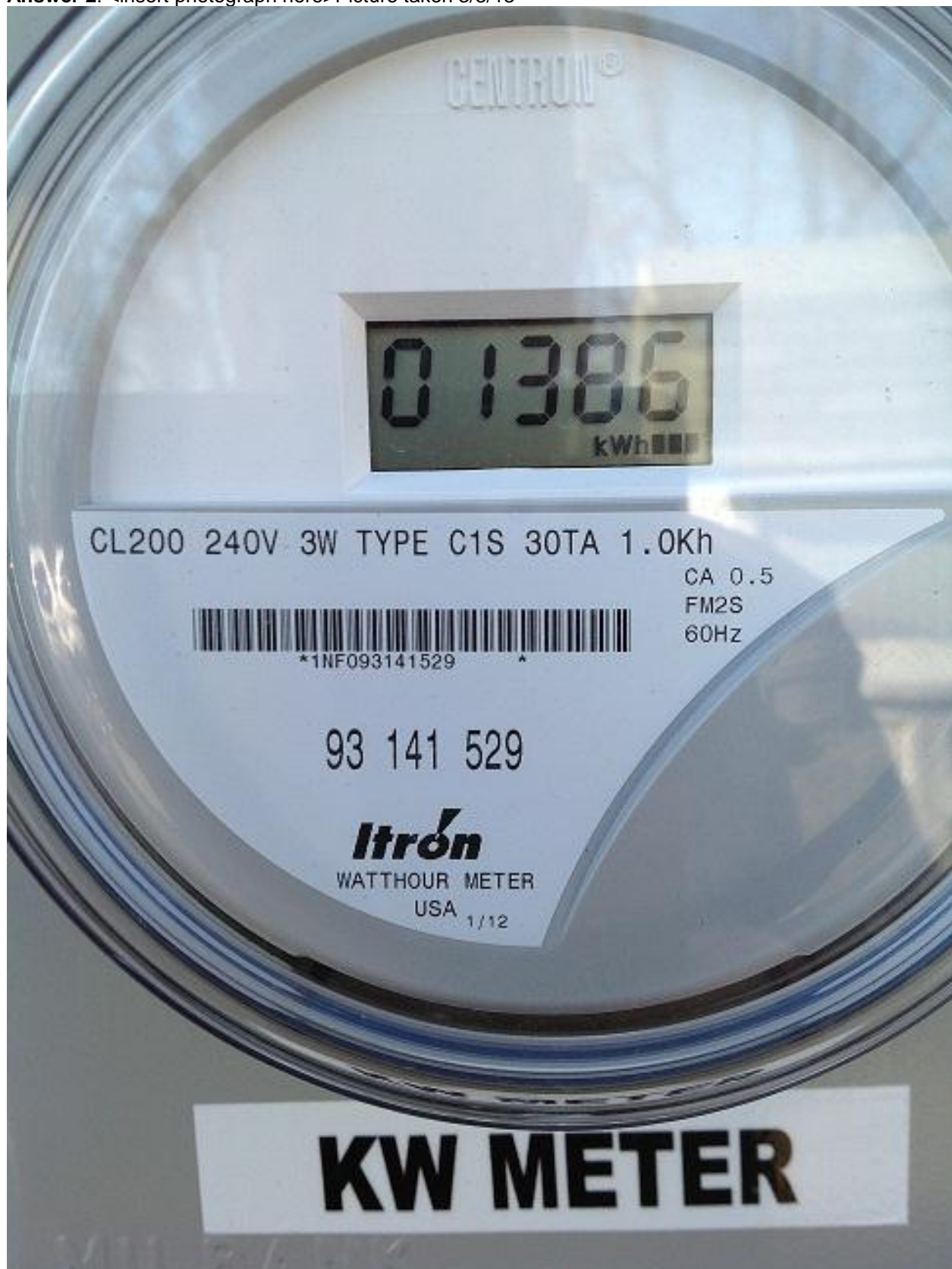
The PVWatts calculator on the NREL website (http://gisatnrel.nrel.gov/PVWatts_Viewer/index.html) returned a Projected Gross Annual Generation Value of 5.624 MWh for a nameplate capacity of 5.04kW at the location of the Snoddy Field generation facility. Please clarify the Projected Gross Annual Generation Value submitted.

Answer 1: <insert answer here>

Question 2: In Section N.1e of the application, the photograph of the meter submitted does not clearly show the Serial Number and other details regarding the Make and Type of the meter.

Please submit a **clear** photograph of the meter that shows the above details and the date the photograph was taken.

Answer 2: <insert photograph here>Picture taken 3/3/13



This foregoing document was electronically filed with the Public Utilities

Commission of Ohio Docketing Information System on

4/3/2013 12:58:13 PM

in

Case No(s). 13-0598-EL-REN

Summary: Reply Reply to staff Inquiries case 13-0598-EL-REN Snoddy Field electronically
filed by Mr. Keith A Snoddy on behalf of Snoddy, Keith Alan Mr.