

Operational Sound Measurements: Blue Creek: 3/19/12

Location	ID #	Status	Nearest Turbine	Start Time	End Time	Duration	L _{aEQ}	L _{cEQ}	L ₉₀	L _{max}	L _{min}	LDN
7426 Pollock Rd., Convoy	91	GNA	20	8:30 PM	8:32 PM	2 Min.	53.2	61.7	49.2	56.6	47.1	53.2
4144 Dull Robinson Rd., Convoy	139	P	35									
14933 Wetzel Rd., Van Wert	141	P	E-21	5:45 PM	5:47 PM	2 Min.	39.5	70.3	37.3	50.5	35.9	39.5
3949 US 127, Van Wert	171	GNA	139									
11657 Feasby Wisener Rd., Van Wert	240	GNA	110	5:30 PM	5:32 PM	2 Min.	37.3	70.4	35.1	56.1	34.5	37.3
9439 Feasby Wisener Rd., Van Wert	248	P	54									
12705 Rd. 12, Scott **	393	P	128	7:43 PM	7:45 PM	2 Min.	51.8	57	47.2	64.7	44.3	51.8
10526 Rd. 24, Haviland	455	GNA	90									
12791 SR 114, Haviland	534	NP	146	8:00 PM	8:02 PM	2 Min.	44.8	54.4	42.1	50.3	41.2	44.8
At the Base of Turbine # 138	X	X	138	4:38 PM	4:40 PM	2 Min.	56.2	80.7	52.7	64.2	51.3	56.2

Turbines were generating at 10% Capacity Factor per Iberdrola's SCADA Display.

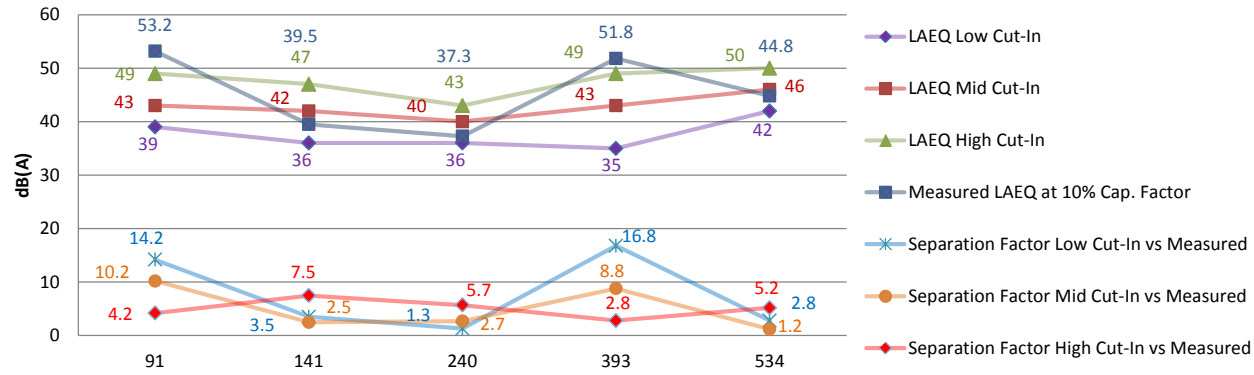
Two Turbines were not Generating Due to Lighning Strike Damage (Needing Blades Replaced)

Weather Conditions at the Time of Measurements: Temperature: 82° F, RH: 41.6%, Wind: 5.4 mph from 70°, Skies: Broken at 2,500' AGL

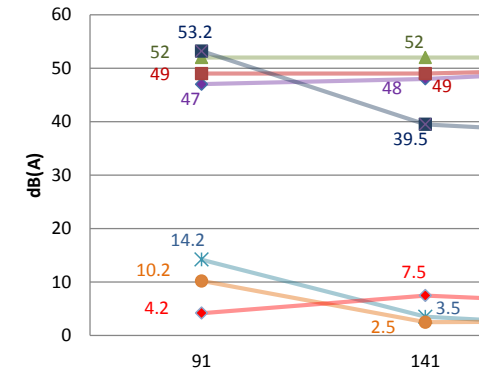
Equipment Used: Calibrated Larson Davis 831 Sound Meter and Kestrel Hand Held Weather Station

Impulsivity LAI _{EQ}	Impulsivity LAI _{EQ} - LA _{EQ}	C-A
54.4	1.2	8.5
46.2	6.7	30.8
48.5	11.1	33
56.7	4.9	5.2
46.9	2.1	9.6
59.1	2.8	24.4

Forecasted Cut-In vs. Measured at 10% Capacity Factor



Forecasted

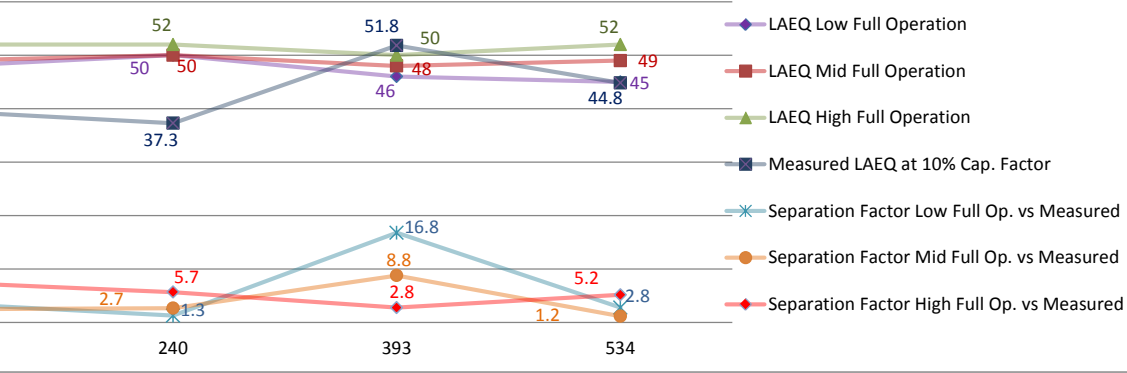


Receptor Number	Forecasted L_{AEQ} Cut-In (Low)	Forecasted L_{AEQ} Cut-In (Mid)
91	39	43
141	36	42
240	36	40
393	35	43
534	42	46

Receptor Number	Forecasted L_{AEQ} Full Op. (Low)	Forecasted L_{AEQ} Full Op. (Mid)
91	47	49
141	48	49
240	50	50
393	46	48
534	45	49

Receptor Number	Sep. (Forecasted vs. Measured): L_{AEQ} Cut-In (Low)	Sep. Factor (Forecasted vs. Measured): L_{AEQ} Cut-In (Mid)
91	14.2	10.2
141	3.5	2.5
240	1.3	2.7
393	16.8	8.8
534	2.8	1.2

ted Full Operation vs. Measured at 10% Capacity Factor



Forecasted L_{AEQ} Cut-In (High)	Measured L_{AEQ} (10% Cap. Factor)
49	53.2
47	39.5
43	37.3
49	51.8
50	44.8

Forecasted L_{AEQ} Full Op. (High)	Measured L_{AEQ} (10% Cap. Factor)
52	53.2
52	39.5
52	37.3
50	51.8
52	44.8

Sep. Factor (Forecasted vs. Measured): L_{AEQ} Cut-In (High)
4.2
7.5
5.7
2.8
5.2

This foregoing document was electronically filed with the Public Utilities

Commission of Ohio Docketing Information System on

8/31/2012 4:51:41 PM

in

Case No(s). 09-1066-EL-BGN

Summary: Spreadsheet documenting a sound spot check conducted on March 19, 2012. The Facility was in compliance with their Certificate. electronically filed by Mr. Nicholas E Doss on behalf of The Ohio Power Siting Board