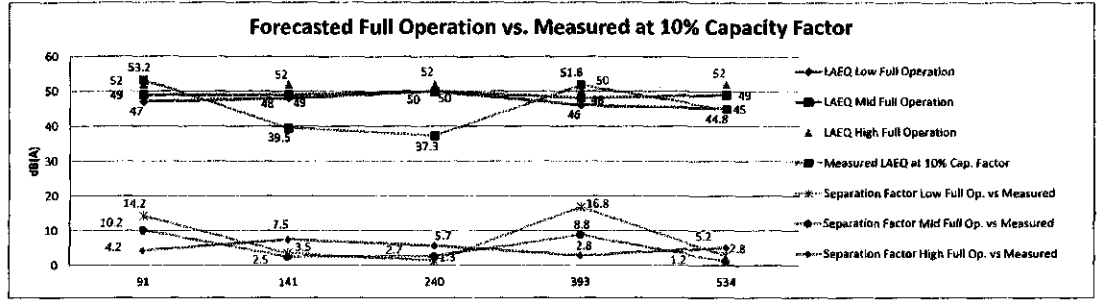
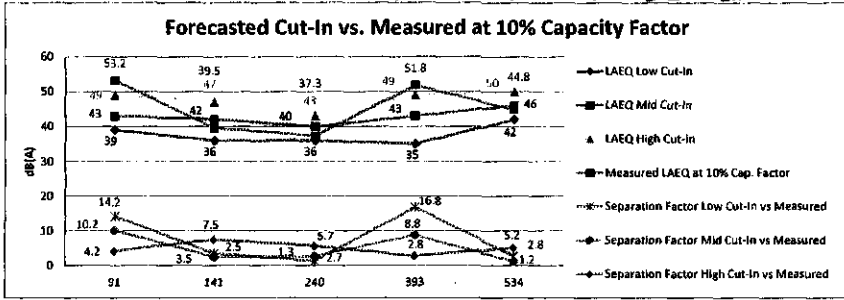


Blue Creek Windfarm 09-1066-EL-B6N

\* Sound MEASUREMENTS \*

Doss, N.E. 8/31/12



Receptor Number	Forecasted $L_{Aeq}$ Cut-In (Low)	Forecasted $L_{Aeq}$ Cut-In (Mid)	Forecasted $L_{Aeq}$ Cut-In (High)	Measured $L_{Aeq}$ (10% Cap. Factor)
91	39	48	49	39.5
141	36	46	47	39.5
240	36	40	43	37.3
393	35	49	48	51.8
534	42	46	50	44.8

Receptor Number	Forecasted $L_{Aeq}$ Full Op. (Low)	Forecasted $L_{Aeq}$ Full Op. (Mid)	Forecasted $L_{Aeq}$ Full Op. (High)	Measured $L_{Aeq}$ (10% Cap. Factor)
91	47	49	52	39.5
141	46	49	52	39.5
240	50	50	52	37.3
393	46	48	50	51.8
534	45	49	52	44.8

Receptor Number	Sep. (Forecasted vs. Measured): $L_{Aeq}$ Cut-In (Low)	Sep. Factor (Forecasted vs. Measured): $L_{Aeq}$ Cut-In (Mid)	Sep. Factor (Forecasted vs. Measured): $L_{Aeq}$ Cut-In (High)
91	14.2	10.2	4.2
141	3.5	3.5	7.5
240	1.3	2.7	5.7
393	16.8	8.8	2.8
534	2.8	1.2	5.2

AMBIENT NOISE VALUES

\* Facility Compliance Spot check \* Conducted for Sound on March 19, 2012 By Nick Doss + James O'Dell

\* Does NOT EXCEED Ambient plus Five dB(A) Facility in Compliance

This is to certify that the images appearing are an accurate and complete reproduction of a case file document delivered in the regular course of business. Technician Jim Date Processed AUG 31 2012

RECEIVED-DOCKETING DIV  
2012 AUG 31 PM 4:01  
PUCO

Operational Sound Measurements: Blue Creek: 5/19/12

**\* ACTUAL MEASUREMENTS \***

Location	ID #	Status	Nearest Turbine	Start Time	End Time	Duration	L <sub>avg</sub>	L <sub>eq</sub>	L <sub>90</sub>	L <sub>max</sub>	L <sub>min</sub>	LDN	Impulsivity LA <sub>10g</sub>	Impulsivity LA <sub>10g</sub> - LA <sub>10g</sub>	C-A
7426 Pollock Rd., Convoy	91	GNA	20	8:30 PM	8:32 PM	2 Min.	59.2	61.7	49.2	56.6	47.1	53.2	54.4	1.2	8.5
4144 Dull Robinson Rd., Convoy	139	P	35												
14884 Wetzel Rd., Van Wert	141	P	E-21	5:25 PM	5:27 PM	2 Min.	39.5	70.3	37.3	50.5	33.5	39.5	46.2	6.7	30.8
3919 US 127, Van Wert	171	GNA	139												
11657 Feasly Wisener Rd., Van Wert	240	GNA	110	5:30 PM	5:32 PM	2 Min.	37.3	70.3	35.1	56.1	34.5	37.3	48.5	11.1	39
9339 Feasly Wisener Rd., Van Wert	248	P	54												
12705 Rd. 19, Scott **	393	P	128	7:33 PM	7:45 PM	2 Min.	51.8	57	37.2	66.7	41.3	51.8	56.7	1.9	5.2
10526 Rd. 24, Haviland	455	GNA	90												
12791 SR 114, Haviland	534	NP	146	8:00 PM	8:02 PM	2 Min.	44.8	34.3	32.1	50.3	41.2	44.8	46.9	2.1	9.6
At the Base of Turbine # 158	X	X	128	8:38 PM	8:40 PM	2 Min.	56.2	80.7	52.7	64.2	51.3	56.2	52.1	4.8	24.4

Turbines were generating at 10% Capacity Factor per Iberdrola's SCADA Display.

Two Turbines were not Generating Due to Lightning Strike Damage (Needing Blades Replaced)

Weather Conditions at the Time of Measurements: Temperature: 82° F, RH: 41.6%, Wind: 5.4 mph from 70°, Skies: Broken at 2,500' AGL

Equipment Used: Calibrated Larson Davis 851 Sound Meter and Keatrel Hand Held Weather Station

↘ Ambient (+) Operational

Blue Creek  
Wind Farm  
09-1066-EL-GEN

Doss, P.E. 8/31/12