



Power Siting Board

John R. Kasich, Governor
Todd A. Snitchler, Chairman

25
RECEIVED-DOCKETING DIV
2012 JUL 10 PM 1:48
PUCO

Board Members

July 10, 2012

Scott Nally
Ohio Environmental Protection Agency

Christiane Schmenk
Ohio Department of Development

Theodore E. Wymyslo, M.D.
Ohio Department of Health

Jim Zehringer
Ohio Department of Natural Resources

David Daniels
Ohio Department of Agriculture

Jeffery J. Lechak, P.E.
Public Member

Louis W. Blessing Jr.
Ohio House of Representatives

Jay Goyal
Ohio House of Representatives

Shannon Jones
Ohio Senate

Tom Sawyer
Ohio Senate

Mark A. Cegelka, Mayor
Village of Glenwillow
29555 Pettibone Road
Glenwillow, Ohio 44139-5348

Dear Mayor Cegelka,

Thank you for contacting the Ohio Power Siting Board (OPSB) regarding First Energy's proposed Glenwillow Transmission Substation. Your letter of concern in regards to the substation has been docketed in case number 12-1727-EL-BSB. Your letter has also been docketed in case number 12-1726-EL-BTX, the associated case for First Energy's proposed Bruce Mansfield-Glenwillow 345 kV Transmission Line Project.

As you know, on June 1, 2012, First Energy filed a pre-application notification letters in these cases with the OPSB and subsequently scheduled four public information meetings in regards to the transmission and substation projects. On June 21, 2012, a public informational meeting was held at Nordonia High School in Macedonia, Ohio and some of the OPSB staff were able to speak with you directly.

These meetings met the OPSB requirement for a 'public informational meeting' with notification given to the public seven to 14 days prior to the meeting (OAC 4905-5-08 B). These preliminary meetings were held prior to the OPSB receiving applications from First Energy on these projects. The OPSB staff will review the applications when they are filed. Once the applications are deemed completed by the staff and accepted, the OPSB will set hearing dates in the project areas. As the Mayor of Glenwillow, if you have a suggestion on where to hold the local public hearing in the substation case, please contact us and let us know which venue would best meet the needs of your constituents.

In regards to your specific concern of potential health risks associated with a 345 kV transmission line, First Energy will calculate and address these potential risks in their application. During their staff investigation, the OPSB staff will evaluate the project in its entirety including any concerns of public interest.

Again, thank you for your concerns about this process. I have attached an Ohio Power Siting Board process flowchart for your reference. Additional information about the projects will be available once First Energy submits their applications. The complete record for cases 12-1727-EL-BSB and 12-1726-EL-BTX is available online at www.OPSB.ohio.gov.

The OPSB looks forward to your input during the public hearings. If you have any additional questions or concerns, please contact Matt Butler, Public Outreach Manager, at (614)-644-7670.

Sincerely,

Kim Wissman, Executive Director
Ohio Power Siting Board

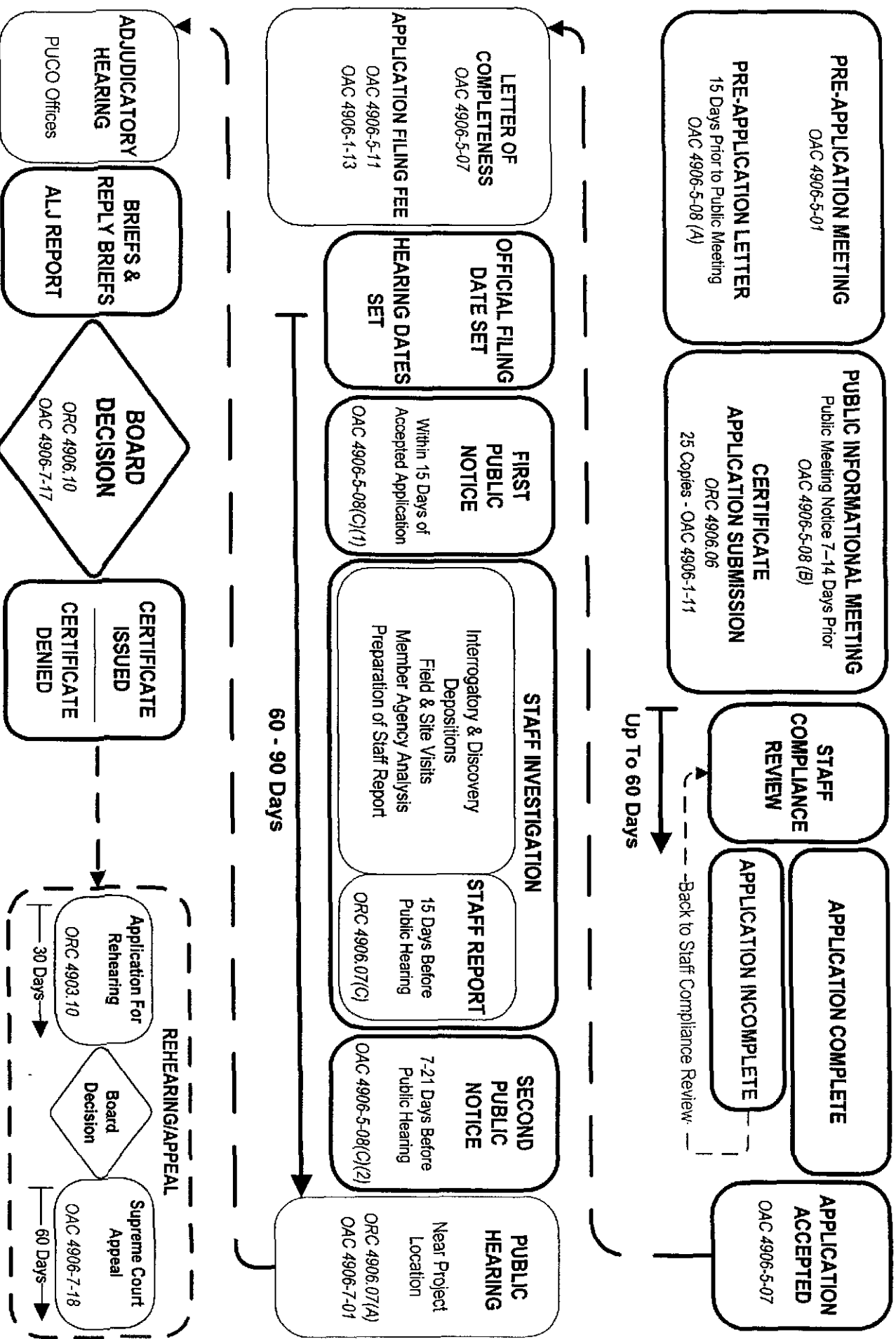
This is to certify that the images appearing are as accurate and complete reproduction of a case file document delivered in the regular course of business.
Technician Jim Date Processed JUL 10 2012

(866) 270-6772
www.OPSB.ohio.gov

An equal opportunity employer and service provider

OHIO POWER SITING PROCESS FLOWCHART

(Statute/Rule References and Select Blocks are Clickable Internet Links)





Village of
Glenwillow

29555 Pettibone Road Glenwillow, Ohio 44139-5348
440.232.8788 fax: 440.232.8929
www.glenwillow-oh.gov

June 27, 201

Kim Wissman
Executive Director
Ohio Power Siting Board
180 E. Broad Street
Columbus, OH 43215

Dear Kim,

Please find enclosed a copy of a letter that I sent to First Energy Corporation on their plan to build an electric substation in Glenwillow to transfer the electricity to their new 345 KV line. As you can see from the letter, we are very concerned about this proposal. Some of our concerns are:

- Lack of communication from the company relative to this proposal and/or their plans;
- The negative impact from such a facility in our community given the fact they have not yet determined the exact location;
- Any potential health risks or concerns that we should be aware with transmitting this level of power throughout our Village;
- The lack of information about any positive impact to the Village, i.e. Potential financial benefits to the community or reduced energy costs to our residents and/or businesses.

We appreciate any input you can give us relative to this project. I can be reached at 440-232-8788.

Sincerely,

Mark A. Cegelka, Mayor





Village of Glenwillow

29555 Pettibone Road Glenwillow, Ohio 44139-5348
440.232.8788 fax: 440.232.8929
www.glenwillow-oh.gov

William E. Snyder
Manager, External Affairs
First Energy Service Co.
7755 Auburn Road
Concord, Ohio 44077

June 21, 2012

RE: Proposed Transmission Line from Beaver County, PA to Glenwillow, OH
Proposed substation to be located in Glenwillow, OH

Dear Mr. Snyder,

As Mayor of the Village of Glenwillow, I must voice my dismay and opposition to First Energy Service Co.'s proposal to locate a new substation in the heart of Glenwillow. I am disappointed that the Village had no input into the "Preliminary Project Timeline", or project information prior to establishing the "Public Informational Meeting". The Village was contacted in early June that a June 21, 2012 meeting in Macedonia, Ohio had already been set and published. This strongly suggests that you have little interest in input from the Village government, its residents, or its businesses.

Moreover, scheduling the "Public Informational Meeting" in Macedonia, Ohio on Thursday, June 21, 2012 for a project that most directly affects the Village of Glenwillow is puzzling. If First Energy is truly interested in the viewpoint of the residents of the Village of Glenwillow, why have no informational meetings been scheduled within the Village itself?

As previously discussed, the Village of Glenwillow has no desire to sell any property it owns to First Energy for the construction of a new substation which is part of this project, particularly on any of the properties identified on your aerial map. These parcels are not suitable for construction of the proposed substation for a number of reasons, not the least of which is proximity to existing residential developments and the fact that they are properties well-suited for private development which would benefit the Village greatly. I believe that the substation would not be in the best interest of the Village, but will have a substantial negative impact.

In fact, I believe there is very little, if any, support to have the proposed substation located anywhere within the Village. The Village already bears the scars of First Energy's high tension towers and lines which traverse the Village from east to west and north to south. We have done and are doing our fair share for the public good.

You have touted this project as necessary to protect the transmission of electric power for the Northeast region of Ohio. Glenwillow has over the course of many years, borne the burden of undesirable projects "for the good of the region". From the myriad of problems caused by the location of landfills within our borders to the unsightly First Energy transmission towers which bisect our community, Glenwillow has long lived with these negative impacts "for the good of the region". I must advise you that the Village of Glenwillow will not acquiesce to a location of the planned substation within its borders without a satisfactory showing of the benefits of this project to its residents.

If you desire to discuss this matter further, please do not hesitate to contact me.

Sincerely,

Mark A. Cegelka, Mayor
Village of Glenwillow

Cc. The Ohio Power Siting Board





Village of
Glenwillow

29555 Pettibone Road Glenwillow, Ohio 44139-5348
440.232.8788 fax: 440.735.9298
www.glenwillow-oh.gov

June 5, 2012

Bill Snyder
First Energy
Manager, External Affairs
7757 Aubrun Road
Concord, OH 44077

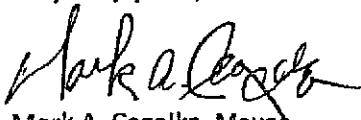
Dear Mr. Snyder,

I am in receipt of the very preliminary plan for the Beaver County, Pa. to Glenwillow, Oh transmission line and related substation facilities. I appreciate that you need to get notice out to affected entities at the earliest time, and for that reason, the information supplied to us is totally preliminary. But, as I am sure you can tell from the rudimentary drawing that is shown, I really have virtually no information on which my office as Mayor, the Village Council, Law Director, Engineer and, indeed, the citizens of Glenwillow can make various necessary determinations. In order to have a meaningful dialog and in order to actually engage the Village of Glenwillow in a meaningful planning process, will you please provide me with a greatly enhanced and detailed drawing of all aspects concerning the route through the Village, the proposed capacity, the proposed location and specific real estate parcel(s), specifics concerning the substation proposed for Glenwillow, including any architectural or artists' rendering. Also, please advise me as to First Energy's plan for the existing Glenwillow substation.

First Energy's preliminary notice on this matter was just received in the last two days of May and yet your notice says you intend to gather public input in June of 2012, WHICH IS THIS MONTH. Your notice therefore sounds as if this is urgent to your company. I ask you therefore to urgently get complete information to my office on an urgent basis. We have a Council meeting Wednesday, June 6th at 7:30 and if you are really hoping to get an official and considered response from the Village this month, please get 10 packets of complete information to me, so that I may distribute them at the Council meeting.

My office is open to you for continued dialog on First Energy's proposal.

Very truly yours,


Mark A. Cegelka, Mayor
Village of Glenwillow

Cc. Mia Moore
Steve Klonowski, Law Director
Mike Henry, Engineer
Council



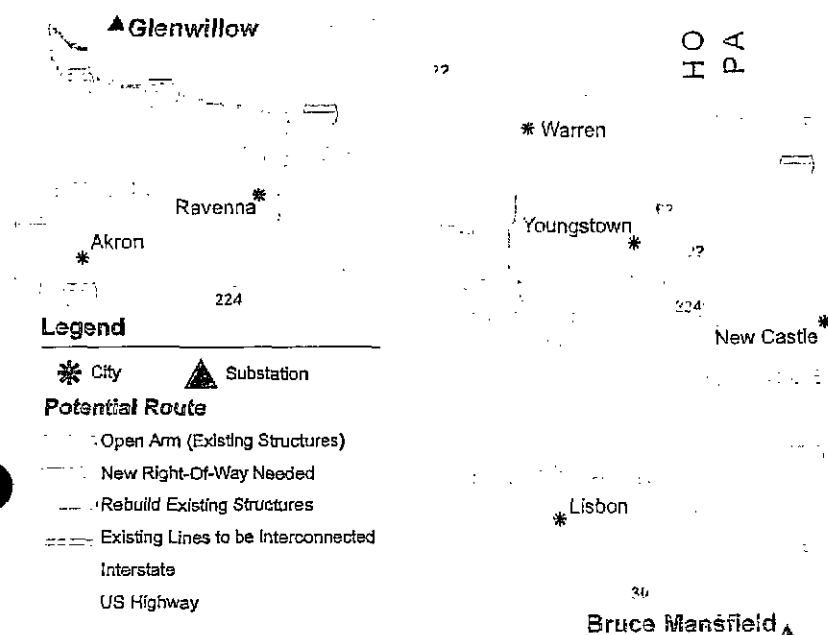
Proposed Transmission Line from Beaver County, Pennsylvania,
to Glenwillow, Ohio

While the bulk of FirstEnergy's projects are needed to ensure system reliability as power plants are retired in northern Ohio, transmission projects will also be completed in Pennsylvania, West Virginia, New Jersey and Maryland as part of FirstEnergy's ongoing commitment to enhance its transmission system reliability. The company estimates spending between \$700 million - \$900 million over the next five years on these projects.

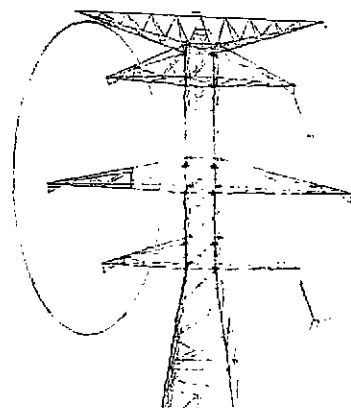
Proposed Transmission Line from
Beaver County, Pennsylvania, to
Glendillon, Ohio

One of the FirstEnergy projects involves building a new 345 kV transmission line that will run more than 100 miles from the company's Bruce Mansfield Plant in Beaver County, Pa. to a new substation that will be built in the Cleveland suburb of Glenwillow.

Continued on back



Depending on the final route, up to 70 percent of the project will involve adding a line to the "open-arm" position on existing structures to minimize impact.



FirstEnergy

William E. Snyder
Manager,
External Affairs

440-350-7750

FirstEnergy's "Energizing the Future" initiative involves installing transmission projects within FirstEnergy's footprint that PJM Interconnection has determined are needed to ensure system reliability as power plants in the region are retired. PJM is a regional transmission organization that coordinates the movement of electricity and oversees reliability in all or part of 13 states, including Ohio.

While many of the projects are in the planning stage, this information packet has been provided to the Village of Glenwillow's administration to help explain how the proposed transmission projects could potentially affect the community.

Sincerely,

William E. Snyder

William E. Snyder

I. Energizing the Future

- Ensuring Service Reliability for FirstEnergy customers
- Proposed Transmission Facilities in Ohio and Pennsylvania

II. Typical Substations

III. Glenwillow Aerials

- transmission lines
- property parcels
- Glenwillow owned parcels (adjacent transmission lines)

IV. Additional Information:

- Visit:
 - www.firstenergycorp.com/transmission
- Email:
 - transmissionprojects@firstenergycorp.com
- Call:
 - 1-800-589-2837

Ensuring Service Reliability for FirstEnergy Customers

Proposed transmission facilities for continued service reliability

- Part of \$700 to \$900 million FirstEnergy planning to invest over the next five years
- Building transmission line and substation to help ensure continued service reliability
- Coal-fired plants closing due to high cost of meeting EPA requirements
- Based on recommendations by PJM Interconnection

Evaluation

- In conjunction with PJM, company began studies in January 2012 to identify reliability solutions
- Routes being developed to minimize impact to property owners and environment

Transmission Line

- Approximately 110 miles of line planned
- Will begin in Beaver County, PA and end in Glenwillow, OH area
- May traverse parts of the following counties
 - Ohio: Cuyahoga, Summit, Portage, Mahoning, Trumbull, Columbiana
 - Pennsylvania: Beaver County
- Up to 70% of the new line could be installed on existing transmission structures
- Approximately \$184 million investment in reliability

New Substation

- Approximately \$37 million investment
- Will connect two existing transmission lines which will enhance reliability in the region
- Various properties in Glenwillow being evaluated for substation site

Public Informational Meetings

- Routes and project information discussed in areas that may be affected
- Comments used to help determine proposed routes that are ultimately developed
- June 23rd, 2012, 6:00 PM to 8:00 PM, Nordonia High School, 8006 S. Bedford Road, Macedonia is nearest meeting to the Glenwillow area

Ensuring Service Reliability for FirstEnergy Customers

*Proposed Transmission Line from Beaver County, Pennsylvania
to Glenwillow, Ohio*

Energizing the Future

FirstEnergy's "Energizing the Future" initiative involves installing transmission projects within FirstEnergy's footprint that PJM has determined are needed to ensure system reliability as power plants in the region are retired.

PJM Interconnection (PJM) is the regional transmission organization that coordinates the movement of electricity and oversees reliability in all or part of 13 states and the District of Columbia. PJM has identified numerous transmission projects that are needed throughout the region to ensure system reliability as power plants in the region are retired. The power plant retirements include nine FirstEnergy plants that are being retired in the region due to the high cost of complying with the U.S. EPA Mercury and Air Toxics Standards (MATS) and other environmental rules.

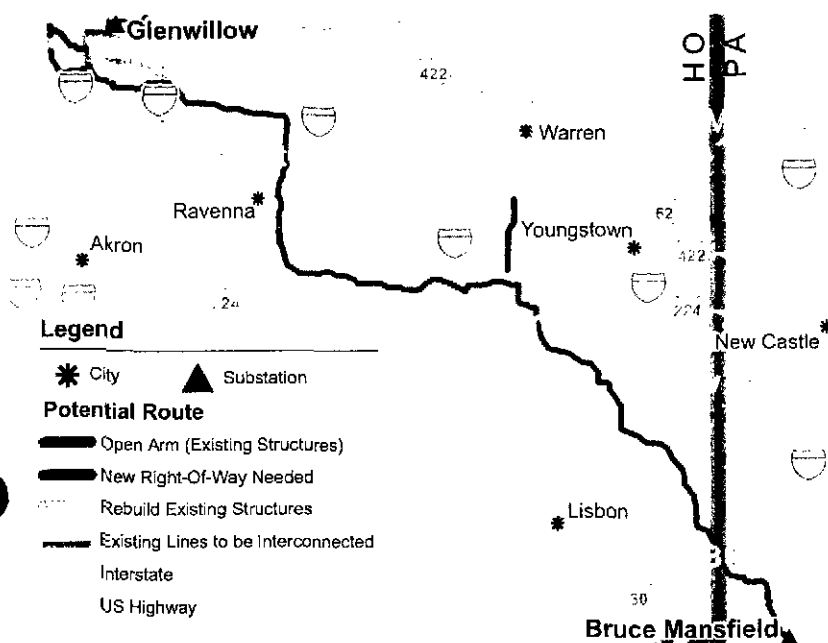
While the bulk of FirstEnergy's projects are needed to ensure system reliability as power plants are retired in northern Ohio, transmission projects will also be completed in Pennsylvania, West Virginia, New Jersey and Maryland as part of FirstEnergy's on-going commitment to enhance its transmission system reliability. The company estimates spending between \$700 - \$900 million over the next five years on these projects.

FirstEnergy's projects are both small and large. The small projects include adding transformers and other facilities in existing substations and replacing conductors on existing transmission lines. The larger projects involve three main types of transmission reinforcement: building new 138 and 345 Kilovolt transmission lines; constructing new substations; and converting some of FirstEnergy's retired generating units to synchronous condensers to provide voltage support in the northern Ohio region.

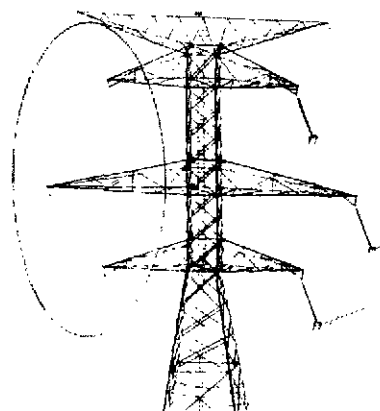
Proposed Transmission Line from Beaver County, Pennsylvania to Glenwillow, Ohio

One of the FirstEnergy projects involves building a new 345 kilovolt (kV) transmission line that will run more than 100 miles from the company's Bruce Mansfield Plant in Beaver County, Pennsylvania, to a new substation that will be built in the Cleveland suburb of Glenwillow.

Continued on back



Depending on the final route, up to 74 percent of the project will involve adding a line to the "open-arm" position on existing structures to minimize impact.



FirstEnergy

Transmission: More than 100 miles of single circuit 345kV transmission line is planned for the project. If approved, the line will run from the Bruce Mansfield Plant in Beaver County, Pennsylvania to the new Glenwillow Substation in Cuyahoga County, Ohio. The preliminary estimate for this part of the project is \$184 million.

Wherever practical, the new lines will be installed on current transmission structures or other existing rights-of-way in parts of the following Ohio counties: Cuyahoga, Summit, Portage, Mahoning, Columbiana, Trumbull; and Beaver County in Pennsylvania.

Depending on the final route, early studies indicate that up to 70 percent of the project and almost all of the Pennsylvania portion of the project, will involve adding a line to the "open-arm" position on existing structures to minimize impact.

Substation: The new Glenwillow Substation will connect the new line with two existing transmission lines currently serving the region. Various sites are being evaluated. The goal is to locate the new Glenwillow Substation as close as possible to the existing lines. The preliminary cost estimate for this part of the project is \$37 million.

Public Involvement and the Process: Any transmission project encompasses a multi-step process that includes significant public input.

■ **Evaluation:** FirstEnergy's siting consultant began route studies for the line in January of 2012. Various potential routes are being further studied to minimize the impact to the environment and property owners.

■ **Informational Meetings:** Potential routes will be discussed at informational meetings held in the areas that may be affected by the project. Members of the public and local officials will be invited to provide input for consideration. These comments will be used to help determine the proposed routes which are ultimately developed. These meetings are planned for June 2012.

■ **Application:** As part of the siting process in Ohio, "preferred" and "alternate" routes for the line and site for the substation are identified. FirstEnergy will then file a formal application for the project with the Ohio Power Siting Board which will hold public hearings as part of their review process. In Pennsylvania, as the line is likely to be installed almost entirely on open arm positions, the line can be proposed using a Letter of Notification to the Pennsylvania Public Utility Commission. Each filing is expected to occur in August 2012. A final decision for each filing is anticipated within one year after being submitted.

■ **Easement/Property Acquisition:** Early study results indicate there is a large potential to utilize existing rights-of-way for much of the project, greatly reducing the amount of new right-of-way needed. Acquiring any transmission rights-of-way will occur after the application is filed. However, construction will not begin until necessary approvals are received. The construction of the transmission line and substation project will be simultaneous in order to meet PJM's June 2015 in-service date.

For more information about FirstEnergy's investment in reliability, visit www.firstenergycorp.com/transmission.

PRELIMINARY PROJECT TIMELINE

January to August	Route Study
May/June 2012	Proposed Routes Developed
June 2012	Public Informational Meetings – Input Considered
August 2012	Application filed with Ohio Power Siting Board and Pennsylvania Public Utility Commission; Public Comment Period
To be determined by OPSB	Public Hearings
Mid 2013	Permits Received/Construction begins
June 1, 2015	PJM requested in-service date

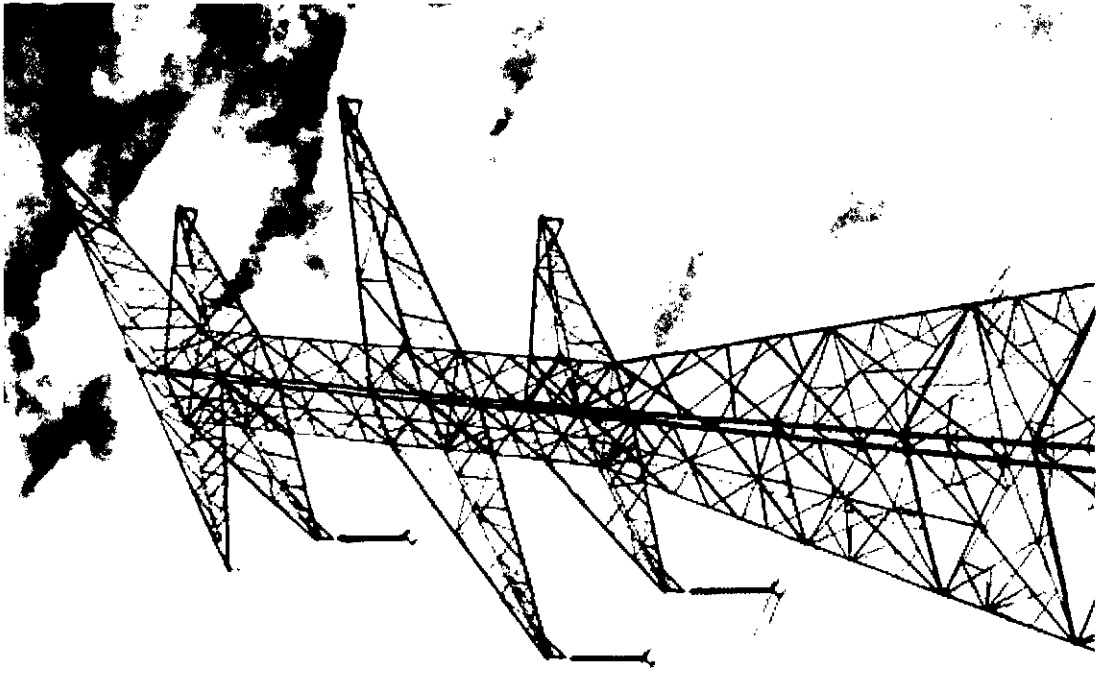
Energizing the Future

Proposed Transmission Facilities in Ohio and Pennsylvania



About the Project

- Building Transmission Line and Substation to help ensure continued service reliability
- Part of \$700 to \$900 million in investments FirstEnergy is planning over the next five years
- Coal-fired plants closing due to high cost of meeting EPA requirements
- Based on recommendations by PJM



About the Project - Transmission

■ Approximately 110 miles of line planned

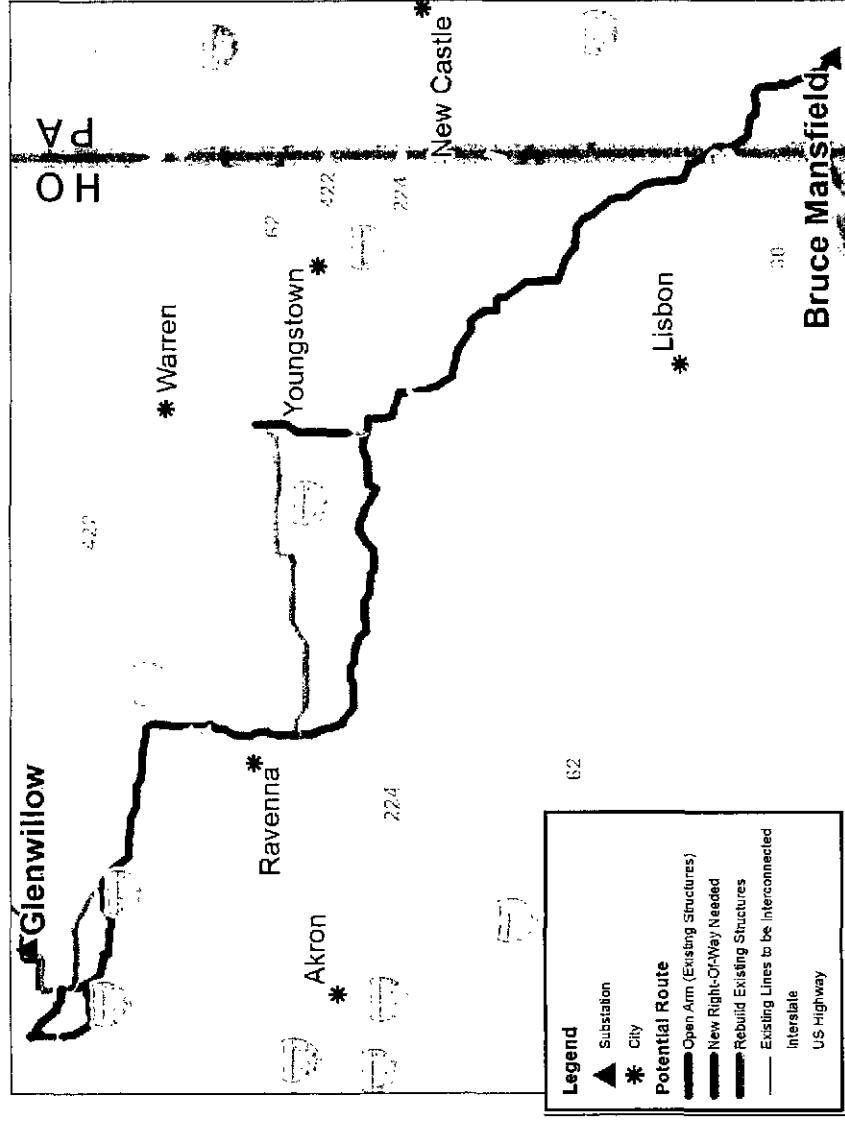
Will begin in Beaver County, PA and end in Glenwillow, OH area

May traverse parts of the following counties:

- In Ohio: Cuyahoga, Summit, Portage, Mahoning, Trumbull, Columbiana
- In Pennsylvania: Beaver County

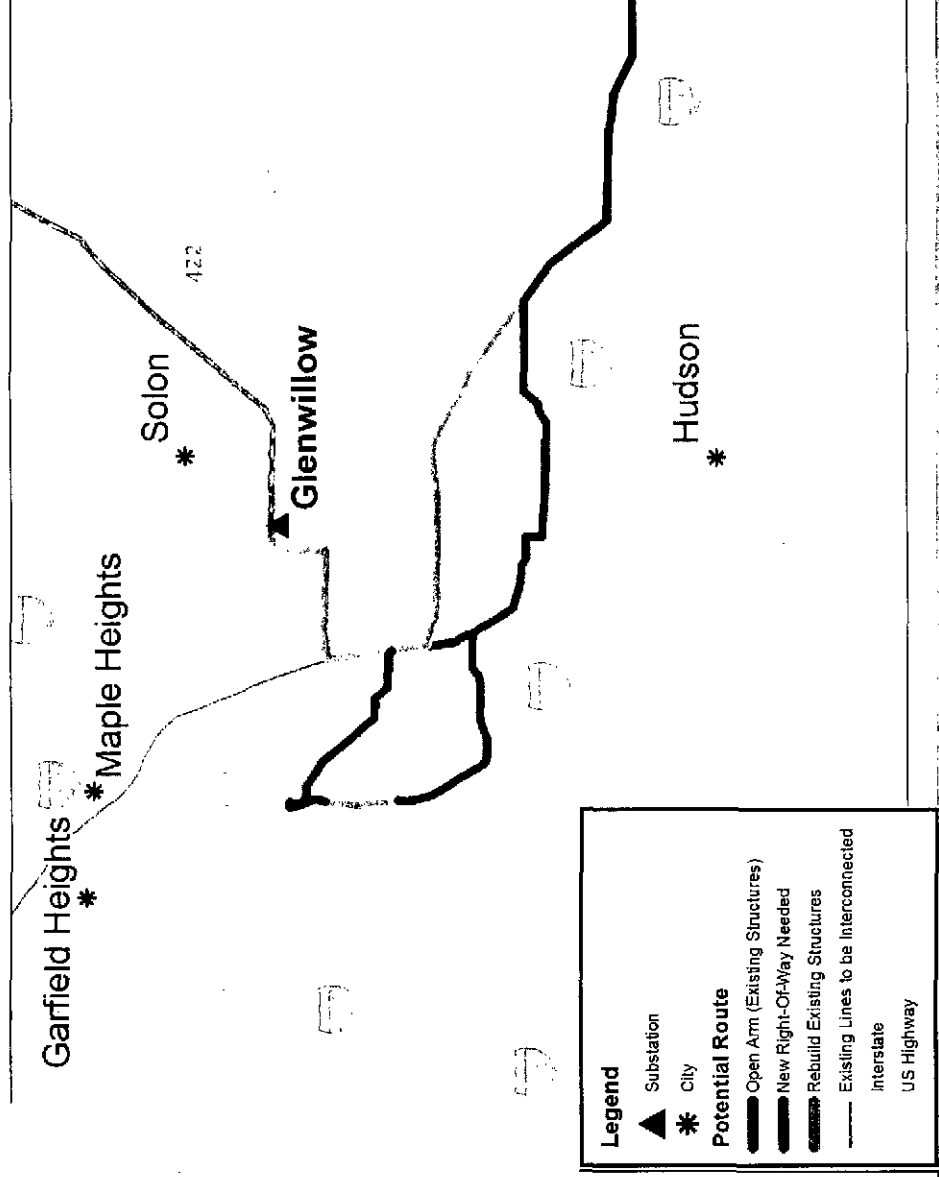
Up to 70% of the new line will be installed on existing transmission structures

Approximately \$184 million investment in reliability



About the Project - Substation

- New Glenwillow substation location determined by proximity to lines and land available
- Approximately \$37 million investment
- Will connect two existing transmission lines which will enhance reliability in the region
- Various properties being evaluated for substation site



Public Involvement and the Process

■ Evaluation

- In conjunction with PJM, began siting studies in January 2012 to identify reliability solutions
- Routes being developed to minimize impact to property owners and environment

■ Informational meetings

- Routes and project information discussed in areas that may be affected
- Comments used to help determine proposed routes that are ultimately developed



Application

- **Ohio**

- “Preferred” and “alternate” routes

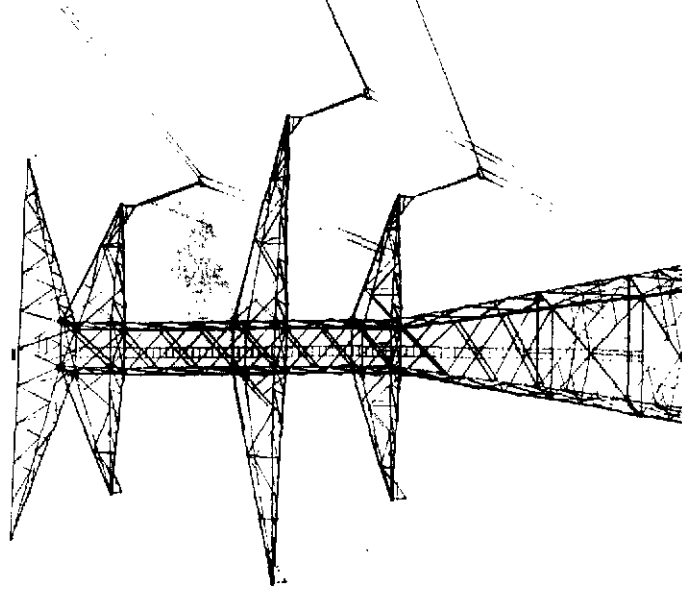
- Formal application filed with Ohio Power Siting Board (OPSB)
 - Filing expected August 2012

- **Formal Public Hearings part of process**

- **Pennsylvania**

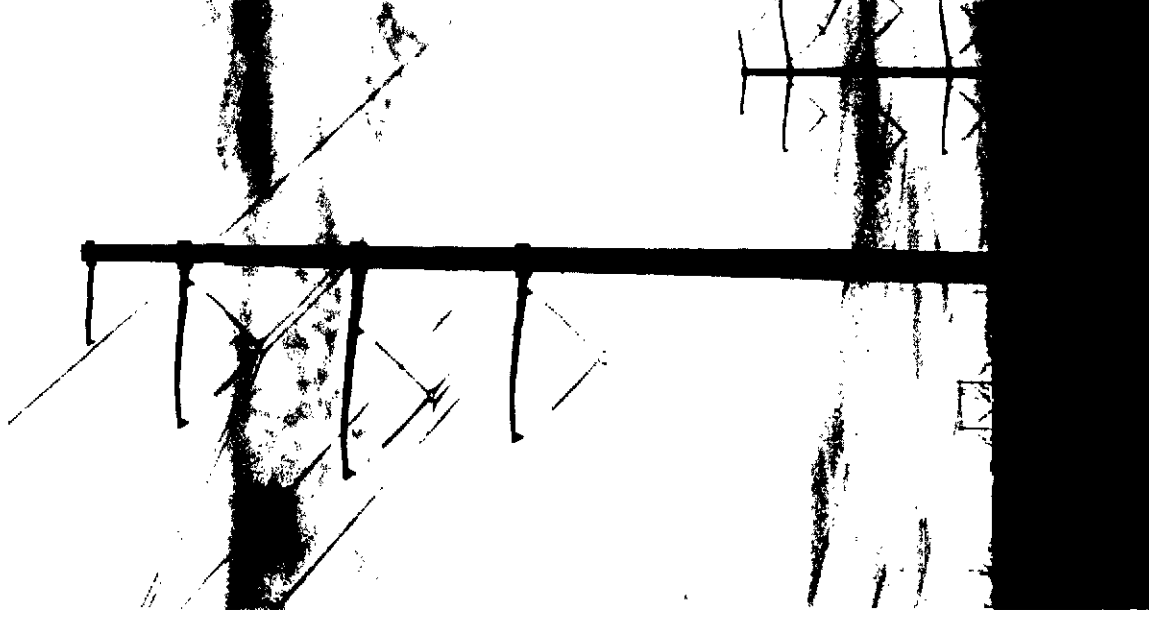
- Required to submit “preferred” route Letter of Notification (LON) filed with Pennsylvania Public Utility Commission
 - Filing expected August 2012

- **Decision for each filing anticipated within one year of filing**



Easement/Property Acquisition

- Potential to utilize existing rights-of-way
- Acquisition will occur after application is filed
- Construction will not begin until approvals are received
 - Construction of transmission line and substation project will be simultaneous to meet PJM's requested June 1, 2015 in-service date



Project Timeline

January to August

Route Study

May/June 2012

Proposed Routes Developed

June 2012

Public Informational Meetings – Input considered

August 2012

Application Filed with Ohio Power Siting Board (OPSB) and Letter of Notification Filed with Pennsylvania Public Utility Commission; Public Comment Period

To be determined by OPSB

Public Hearing

Mid 2013

Permits Received/Construction begins

June 1, 2015

PJM requested in-service date

For More Information

- Visit:

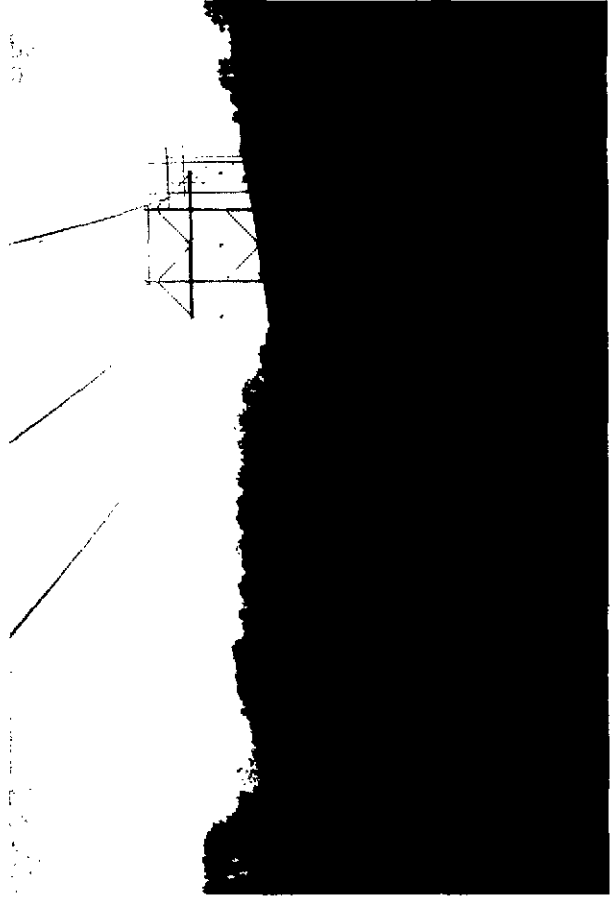
www.firstenergycorp.com/transmission

- Email:

transmissionprojects@firstenergycorp.com

- Call:

1-800-589-2837



• •

Thank You

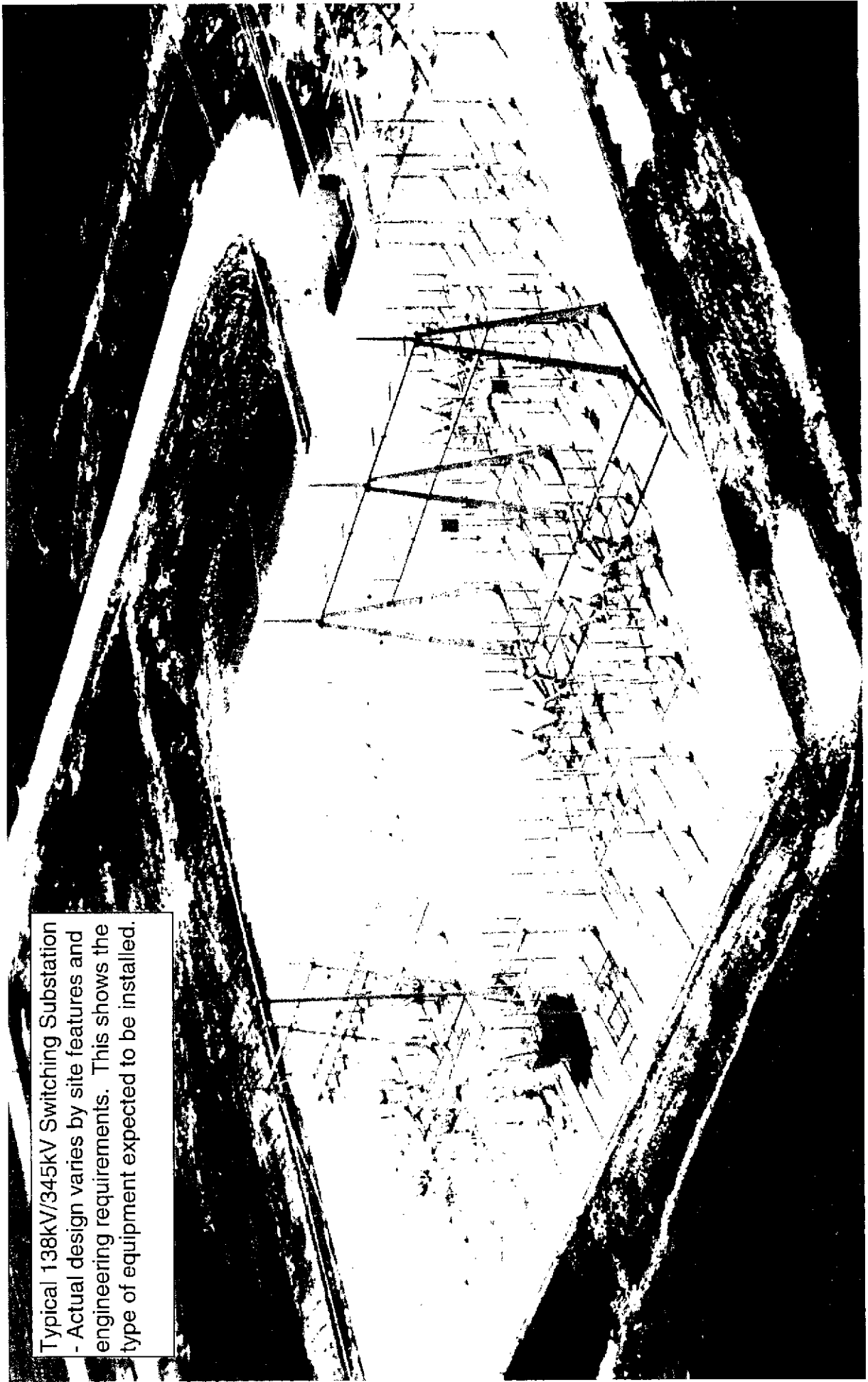
Questions & Answers

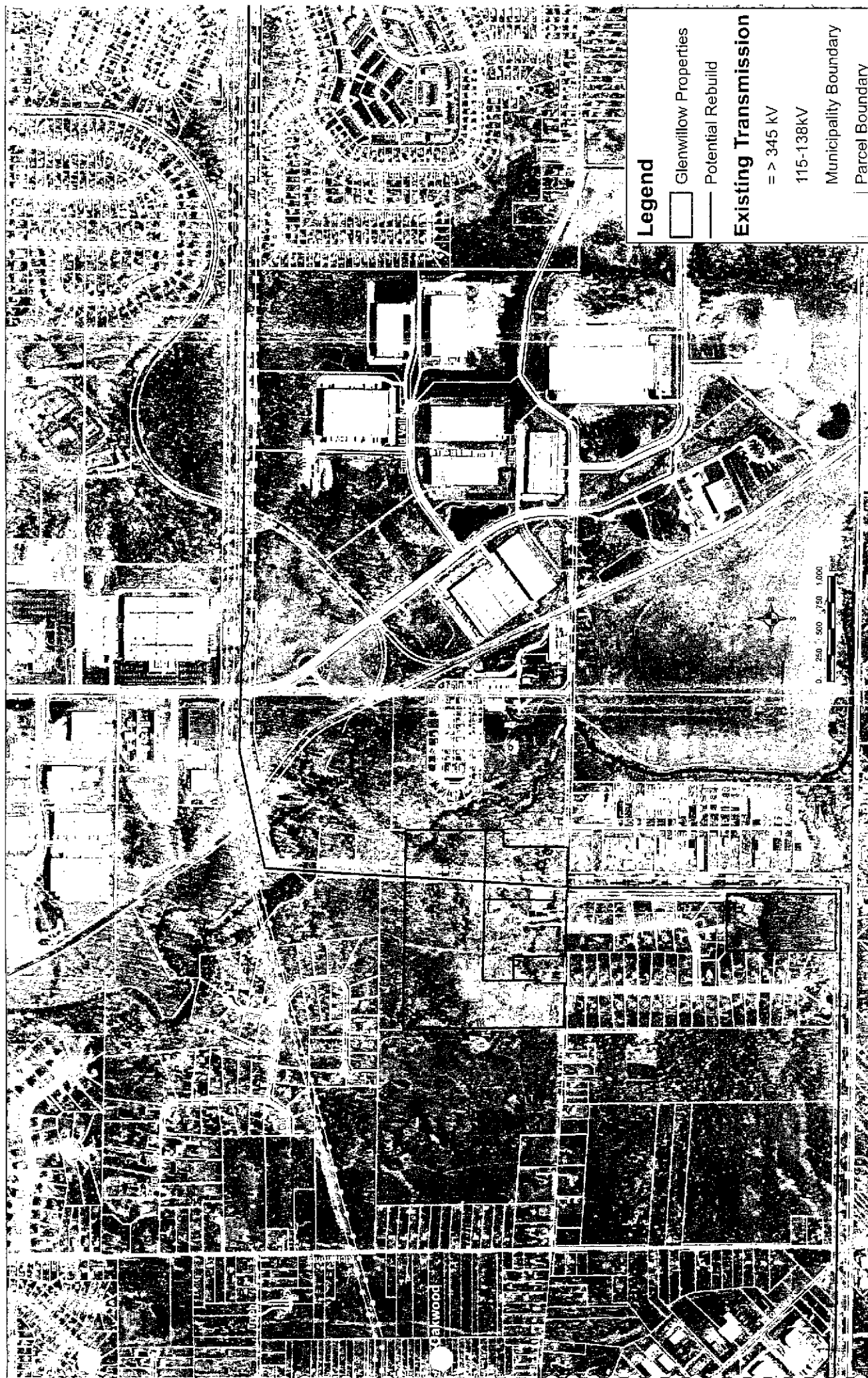
Forward-Looking Statements: This presentation includes forward-looking statements based on information currently available to management. Such statements are subject to certain risks and uncertainties. These statements include declarations regarding management's intents, beliefs and current expectations. These statements typically contain, but are not limited to, the terms "anticipate," "potential," "expect," "believe," "estimate" and similar words. Forward-looking statements involve estimates, assumptions, known and unknown risks, uncertainties and other factors that may cause actual results, performance or achievements to be materially different from any future results, performance or achievements expressed or implied by such forward-looking statements. Actual results may differ materially due to: the speed and nature of increased competition in the electric utility industry, the impact of the regulatory process on the pending matters before FERC and in the various states in which we do business including, but not limited to, matters related to rates, the status of the PJM Interconnection, L.L.C., (PJM) direction to suspend work on the project pending review of its planning process, its re-evaluation of the need for the project and the uncertainty of the timing and amounts of any related capital expenditures, the uncertainties of various cost recovery and cost allocation issues resulting from ATSI's realignment into PJM, economic or weather conditions affecting future sales and margins, changes in markets for energy services, changing energy and commodity market prices and availability, financial derivative reforms that could increase our liquidity needs and collateral costs, the continued ability of FirstEnergy's regulated utilities to collect transition and other costs, operation and maintenance costs being higher than anticipated, other legislative and regulatory changes, and revised environmental requirements, including possible GHG emission, water intake and coal combustion residual regulations, the potential impacts of any laws, rules or regulations that ultimately replace CAIR, including CSAPR which was stayed by the courts on December 30, 2011, and the effects of the EPA's MATS rules, the uncertainty of the timing and amounts of the capital expenditures that may arise in connection with any litigation including NSR litigation or potential regulatory initiatives or rulemakings (including that such expenditures could result in our decision to shut down or idle certain generating units), the uncertainties associated with the company's plan to retire its older unscrubbed regulated and competitive fossil units, including the impact on vendor commitments and PJM's review of the company's plans for, and timing of, those retirements, adverse regulatory or legal decisions and outcomes with respect to our nuclear operations (including, but not limited to the revocation or non-renewal of necessary licenses, approvals or operating permits by the NRC including as a result of the incident at Japan's Fukushima Daiichi Nuclear Plant), issues that could result from our continuing evaluation of the indications of cracking in the Davis-Besse plant shield building imposed by the Confirmatory Action Letter issued by the NRC, adverse legal decisions and outcomes related to Met-Ed's and Penetec's ability to recover certain transmission costs through their transmission service charge riders, the continuing availability of generating units and changes in their ability to operate at or near full capacity, replacement power costs being higher than anticipated or inadequately hedged, the ability to comply with applicable state and federal reliability standards and energy efficiency mandates, changes in customers' demand for power, including but not limited to, changes resulting from the implementation of state and federal energy efficiency mandates, the ability to accomplish or realize anticipated benefits from strategic goals, FirstEnergy's ability to improve electric commodity margins and the impact of, among other factors, the increased cost of fuel and fuel transportation on such margins, the ability to experience growth in the distribution business, the changing market conditions that could affect the value of assets held in FirstEnergy's NDTs, pension trusts and other trust funds, and cause FirstEnergy and its subsidiaries to make additional contributions sooner, or in amounts that are larger than currently anticipated, the impact of changes to material accounting policies, the ability to access the public securities and other capital and credit markets in accordance with FirstEnergy's financing plan, the cost of such capital and overall condition of the capital and credit markets affecting FirstEnergy and its subsidiaries, changes in general economic conditions affecting FirstEnergy and its subsidiaries, interest rates and any actions taken by credit rating agencies that could negatively affect FirstEnergy's and its subsidiaries' access to financing or their costs and increase requirements to post additional collateral to support outstanding commodity positions, LOCs and other financial guarantees, the state of the national and regional economy and its impact on major industrial and commercial customers of FirstEnergy and its subsidiaries, issues concerning the soundness of domestic and foreign financial institutions and counterparties with which FirstEnergy and its subsidiaries do business, the risks and other factors discussed from time to time in FirstEnergy's and its applicable subsidiaries' SEC filings, and other similar factors. The foregoing review of factors should not be construed as exhaustive. New factors emerge from time to time, and it is not possible for management to predict all such factors, nor assess the impact of any such factor on FirstEnergy's business or the extent to which any factor, or combination of factors, may cause results to differ materially from those contained in any forward-looking statements. FirstEnergy expressly disclaims any current intention to update, except as required by law, any forward-looking statements contained herein as a result of new information, future events or otherwise.





Typical Large Substation - Actual design varies by site features and engineering requirements. Similar in size to the proposed substation, pending final engineering.

Typical 138kV/345kV Switching Substation
- Actual design varies by site features and
engineering requirements. This shows the
type of equipment expected to be installed.









Legend

-  Glenwillow Properties
-  Potential Rebuild

Existing Transmission

-  = > 345 kV
-  115-138kV
-  Municipality Boundary
-  Parcel Boundary