



Application for a Certificate of Environmental Compatibility and Public Need

Buckeye II Wind Farm

Goshen, Rush, Salem, Union, Urbana, and Wayne Townships - Champaign County, Ohio

Respectfully Submitted To:

The Ohio Power Siting Board
180 East Broad Street
Columbus, Ohio 43215

Applicant:

Champaign Wind LLC
44 East 30th Street, 10th Floor
New York, New York 10016
Contact: Jason Dagger, Project Manager
P. 937.595.0304

Prepared by:

edr Companies
217 Montgomery St., Suite 1000
Syracuse, New York 13202
Contact: Ben Brazell, Project Manager
P. 315.471.0688

Volume III

Exhibit L through Exhibit T



everpower

EXHIBIT L

Cultural Resources Report

CULTURAL RESOURCES RECORDS REVIEW FOR THE BUCKEYE II WIND FACILITY PROJECT, CHAMPAIGN COUNTY, OHIO

by

Elizabeth G. Heavrin, Flora Church, James H. Kompanek, and Stevan C. Pullins

Prepared for

Champaign Wind LLC

Prepared by



Lexington, KY | Hurricane, WV | Berlin Heights, OH
Evansville, IN | Longmont, CO
Mt. Vernon, IL | Sheridan, WY | Shreveport, LA

CULTURAL RESOURCES RECORDS REVIEW FOR THE BUCKEYE II WIND FARM, CHAMPAIGN COUNTY, OHIO

By

Elizabeth G. Heavrin, Flora Church, James H. Kompanek, and Stevan C. Pullins

Prepared for

Jason Dagger
Project Manager
Champaign Wind LLC
129 S Main St
Bellefontaine, OH 43311
(937) 604-8820
JDagger@Everpower.com

Prepared by

Cultural Resource Analysts, Inc.
3556 Teays Valley Road, Suite 3
Hurricane, WV 25526
Phone: (304) 562-7233
Fax: (304) 562-7235
Website: www.crai-ky.com
manslinger@crai-ky.com
CRA Project No.: W12C002



Stevan C. Pullins, RPA
Principal Investigator

March 20, 2012

Lead State Agency: Ohio Power Siting Board
Lead Federal Agency: U. S. Fish and Wildlife Service

TABLE OF CONTENTS

LIST OF FIGURES	i
LIST OF TABLES.....	i
I. INTRODUCTION	1
II. RECORDS REVIEW AND IMPACT ASSESSMENT	2
III. SUMMARY AND CONCLUSIONS.....	13
REFERENCES CITED.....	13

LIST OF FIGURES

Figure 1. Map Champaign County, Ohio.....	1
Figure 2. Study Area and Direct APE for Buckeye II.....	3
Figure 3. Registered Landmarks, Historic Properties, and Cemeteries within 5.0 mi (8.0 km) of the Direct APE (oversized map).	
Figure 4. Registered Archaeological Sites within 5.0 mi (8.0 km) of the Direct APE (oversized map).	
Figure 5. Direct APE for Buckeye II on the Mills Atlas (2006 [1914]).....	7
Figure 6. Direct APE for Buckeye II on the 1916 Mechanicsburg OH USGS 15-minute quadrangle map.....	11

LIST OF TABLES

Table 1. National Register Listings, DOE, and Boundaries within 5.0 miles (8.0 km) of the Direct APE.	15
Table 2. Ohio Historic Inventory Sites within 5.0 miles (8.0 km) of Direct APE.....	16
Table 3. Ohio Archaeological Inventory Sites within 5.0 miles (8.0 km) of Direct APE.	41
Table 4. Ohio Genealogical Society Cemeteries within 5.0 miles (8.0 km) of the Direct APE.	47

I. INTRODUCTION

Cultural Resource Analysts, Inc. (CRA) has conducted a cultural resources records review for the Buckeye II Wind Facility Project (Buckeye II) in Champaign County, Ohio (Figure 1). The records review includes a discussion of potential direct and indirect impacts to the preservation and continued meaningfulness of identified properties, including but not limited to potential direct effects to archaeological sites and potential visual effects to aboveground historic properties.

Champaign Wind LLC (Applicant) plans to submit a Certificate of Application to the Ohio Power Siting Board (OPSB) for the proposed Buckeye II project, Champaign County, Ohio. As specified in the OPSB's regulations at 4906-17-08(D) – Social and Ecological Data, Cultural Impact, applicants are required to identify any registered landmarks of historic, religious, archaeological, scenic, natural, or other cultural significance within five miles of a proposed wind facility. The records review and discussion of impacts presented here is designed to address the requirements of 4906-17-08(D).



Figure 1. Map Champaign County, Ohio showing Buckeye II location.

Definitions

The direct Area of Potential Effects (APE) is defined as the project footprint or area of permanent *and* temporary ground disturbance associated with Buckeye II (Figure 2). The Study Area or indirect visual APE is defined as the area within a 5.0-mi (8.0-km) radius of the direct APE (Figure 2).

Project Location and Description

The Applicant is proposing to develop, construct, own, and operate a wind-powered electric generation facility, which will consist of up to 56 wind turbine generators and associated ancillary features such as gravel access roads, electric interconnect, and an interconnection substation (the turbines and all ancillary features are referred to as the "Facility"). Each wind turbine generator will have a nameplate capacity rating of up to 3.0 MW (depending on the final turbine model selected), and the total generating capacity of the Facility is not expected to exceed 171 MW. The energy generated at the Facility will connect to the existing Urbana-Mechanicsburg-Darby 138kV Transmission Line owned by PJM Interconnection.

The proposed wind turbine sites for Buckeye II have a ground-disturbing area comprised of a 200-foot radius around a central point, or about 2.9 acres. Turbine height is estimated at 496 ft. Temporary easements for the proposed access roads are 55 feet in width, and the easements for the proposed buried interconnects are 15 feet in width. Overall, the direct APE for Buckeye II encompasses approximately 372.4 acres, based on shapefile information provided by the Applicant on February 14, 2012.

The Study Area for the Buckeye II development encompasses approximately 155,267.5 acres in the eastern portion of Champaign County, including the city of Urbana, and small portions of northern Clark County, and western Union and Madison counties (Figure 2).

Regulatory and Project Review Authority

This records review is designed to satisfy the requirements of Ohio Administrative Code Chapter 4906-17-08 (D) for the OPSB.

State Authority

Ohio Administrative Code 4906-17-08(D) requires the OPSB to take cultural resources into consideration as part of the application filing requirements for wind-powered electric generation facilities. Buckeye II will be regulated by the OPSB under Chapter 4906 of the Ohio Revised Code and Chapters 4906-1 to 4906-17 of the Ohio Administrative Code. Chapter 4906-17-08(D) Cultural Impact of the OAC directs the identification of historic landmarks located within five miles of the proposed facility.

II. RECORDS REVIEW AND IMPACT ASSESSMENT

The following resources were examined for the purposes of this records review: Ohio Historic Preservation Office (OHPO) online-GIS records for National Register of Historic Places (NRHP)-listed properties, NRHP Determination of Eligibility (DOE) properties, NRHP boundaries, the Ohio Historic Inventory (OHI), the Ohio Archaeological Inventory (OAI), Ohio Genealogical Society (OGS) cemeteries, and previous Phase I, II, and III cultural resources surveys conducted within the Study Area. Mills' (1914) *Archaeological Atlas of Ohio* was examined for recorded archaeological sites and Indian trails, and historic county atlases and historic USGS 15-minute and 7.5-minute topographic quadrangles were reviewed.

Previous Cultural Resource Surveys

Eight previous Phase I cultural resource surveys have been completed within 5.0-mi (8.0 km) of the direct APE, all in Champaign County. Two of these were Phase I cultural resource surveys completed for the Ohio Department of Transportation regarding development of US 68 (Baker 1996; Mustain and Young 1997). Watkins' (2004) survey was also completed for the Ohio Department of Transportation regarding improvements to SR 56. The Weller von Molsdorff (1997) survey was for a cell tower, Addington and Clarke (1984) for Urbana City Park, Riordan and Smolek (1977) for two interceptor routes for an Urbana facility plan, and Riordan (1987) for a bikeway.

The most recent cultural resource survey was conducted by CRA in 2010-2011 in association with the Buckeye Wind Project OPSB Docket 08-666-EL-BGN (hereafter Buckeye I) in Champaign County for Buckeye Wind LLC (Heavrin et al. 2011; Nelson and Meece 2011).

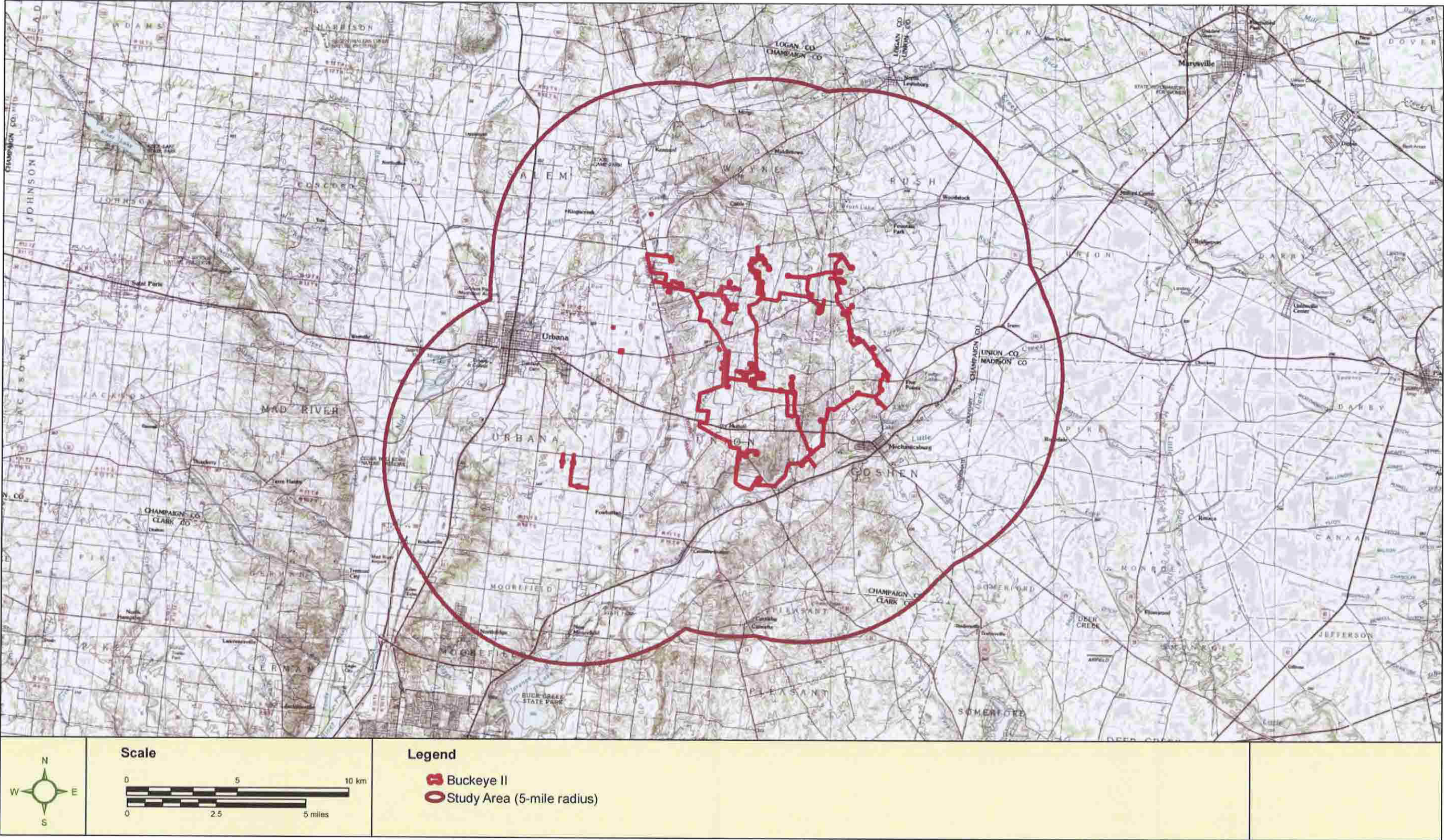


Figure 2. Study Area and Direct APE for Buckeye II.

Requirements of the Ohio Administrative Code Chapter 4906-17-08 (D) Cultural Impact

(1) The applicant shall indicate, on the 1:24,000 map referenced in paragraph (C)(1)(a) of this rule, any registered landmarks of historic, religious, archaeological, scenic, natural, or other cultural significance within five miles of the proposed facility

National Register of Historic Places

The records review of the OHPO online GIS mapping revealed that 32 NRHP-listed properties and two National Register DOE sites have been recorded within 5.0 mi (8.0 km) of the direct APE (Table 1 and Figure 3). In addition, NRHP boundaries are provided for four NRHP properties, including three historic districts and one large farm. The Scioto Street Historic District and Monument Square Historic District in Urbana and the Mechanicsburg Commercial Historic District in Mechanicsburg contain particularly rich concentrations of historic resources. None of these previously identified properties is within the direct APE.

Ohio Historic Inventory Resources

The review indicated that 791 OHI resources have been previously recorded within 5.0 mi (8.0 km) of the direct APE, including four OHI resources surveyed during the Buckeye I project (Table 2 and Figure 3). Slightly more than three-quarters of these resources consist of single dwellings and other residential complexes, while another 10 percent are various commercial properties. The remaining resources consist of low frequencies of barns, mills, schools, libraries, colleges, cemetery structures, a theatre, industrial, transportation, rail, other, and unknown.

All but two of these OHI properties are located in Champaign County, and most are found in the towns of Urbana and Mechanicsburg and along the US 68 corridor. None of the OHI properties are located within the direct APE. Prior to CRA's 2010-2011 study for the Buckeye I project, the rural areas of Champaign County were not subject to a systematic architectural survey. While the 2010-2011 survey identified hundreds of historic architectural resources located throughout the eastern half of Champaign County, the vast majority of these resources were not recorded in the OHI, per agreement with OHPO, so they are not included in the records review results. However, it should be noted the previous survey identified 1,475 individual properties located in the rural areas and crossroads communities of the Study Area for Buckeye I, of which 1,167 are located in the Study Area for the Buckeye II. Based on the survey results, it was determined that historic farmsteads and farmhouses, one-room schoolhouses, churches, cemeteries, and crossroads communities are character-defining property types that contribute to one's appreciation of the area as a traditional farming community (Heavrin et al. 2011).

Ohio Archaeological Inventory Resources

The review identified 260 previously recorded archaeological sites within 5.0 mi (8.0 km) of the direct APE (Table 3 and Figure 4), including 10 archaeological sites inventoried during the Buckeye Wind Farm Phase I project. Seven of the 260 sites are located in Clark County and the rest are located in Champaign County; none are located in Union or Madison counties. The sites consist of 45 historic-era sites (type and function unknown), 203 prehistoric sites, 11 sites with both historic and prehistoric components, and one site of unknown period. For the prehistoric sites, 228 temporal components were identified: 171 unknown prehistoric, 2 Paleoindian, 3 unknown Archaic, 6 Early Archaic, 2 Middle Archaic, 24 Late Archaic, 11 unknown Woodland, 1 Early Woodland, 1 Middle Woodland, and 2

Late Woodland to Late Prehistoric. Except for 1 burial, 7 mounds, 2 camps, and 1 habitation, the rest of the archaeological sites are of unknown function (Table 3).

One site, originally identified during the Buckeye I archaeological survey (Nelson and Meece 2011), has been recommended as potentially eligible for the NRHP. Site 33CH415 is a historic-period site that includes a possible root cellar or refuse pit containing a wide variety of artifact types, including domestic, architectural, and faunal. This site is not within the direct APE of the Buckeye II project.

Five previously identified sites (33CH412, 33CH414, 33CH417, 33CH418, and 33CH419) appear to be within the direct APE for Buckeye II (Figure 4). All five sites were identified during the Phase I archaeological survey associated with the Buckeye I project (Nelson and Meece 2011), and all have been previously recommended as not eligible for the NRHP, with no further work required.

Ohio Genealogical Society Cemeteries

Fifty-five cemeteries have been identified by the Ohio Genealogical Society within 5.0 mi (8.0 km) of the direct APE: 6 in Clark County, 48 in Champaign County, and 1 in Madison County (Table 4 and Figure 3). None of these previously identified cemeteries is located within the direct APE.

Mills' (1914) Archaeological Atlas of Ohio

A review of Mills' 1914 Archaeological Atlas indicates that three prehistoric mounds, three earthworks, three burials, one prehistoric cemetery, two circular enclosures, and one earthen enclosure were recorded within 5.0 mi (8.0 km) of the direct APE in Champaign County. The mounds are all located in Urbana Township; Union Township contains one of the burials in the extreme northwest portion of the township and the prehistoric cemetery and earthen enclosure southwest of Catawba Station. The two circular enclosures were

located east and southeast of Mechanicsburg, and one burial was reported east of Middletown. No archaeological sites were recorded within 5.0 mi (8.0 km) of the direct APE in Union, Madison, or Clark counties.

Mills (1914:vii) indicates that a trail (#3), which connected the forks of the Muskingum River to the Scioto, then west and north to the Miami River and north to the Maumee River, traversed a portion of the area within 5.0 mi (8.0 km) of the direct APE.

None of the archaeological remains noted in Mills' atlas are located within the direct APE for Buckeye II (Figure 5).

Historic Atlases and Historic USGS 15-minute Topographic Quadrangles

Historic atlases for Clark County (Pleasant and Moorefield Townships), Champaign County (Urbana and Mad River Townships), Union County (Union Township), and Madison County (Somerford and Pike Townships) were examined to determine whether historic structures had been recorded within 5.0 mi (8.0 km) of the direct APE. The following resources were reviewed: Starr et al. (1874) and Everts (1875) for Champaign and Clark Counties; Kizer (1859), Rerick Brothers (1894), and Lake (1870) for Clark County; Caldwell (1875) for Madison County; and Mowry (1877) and Marysville Map Co. (1908) for Union County. USGS 15-minute topographic quadrangles which were reviewed included South Charleston, OH 1907, London, OH 1907, Mechanicsburg, OH 1916 and 1944, St. Paris, OH 1916 and 1944, and Springfield, OH 1906.

According to these historical atlases, structures were present within 5.0 mi (8.0 km) of the direct APE as early as 1859 and continuing through 1944. The scale of mapping makes it difficult to determine whether something is actually within 5.0 mi (8.0 km) of the direct APE along its boundaries.

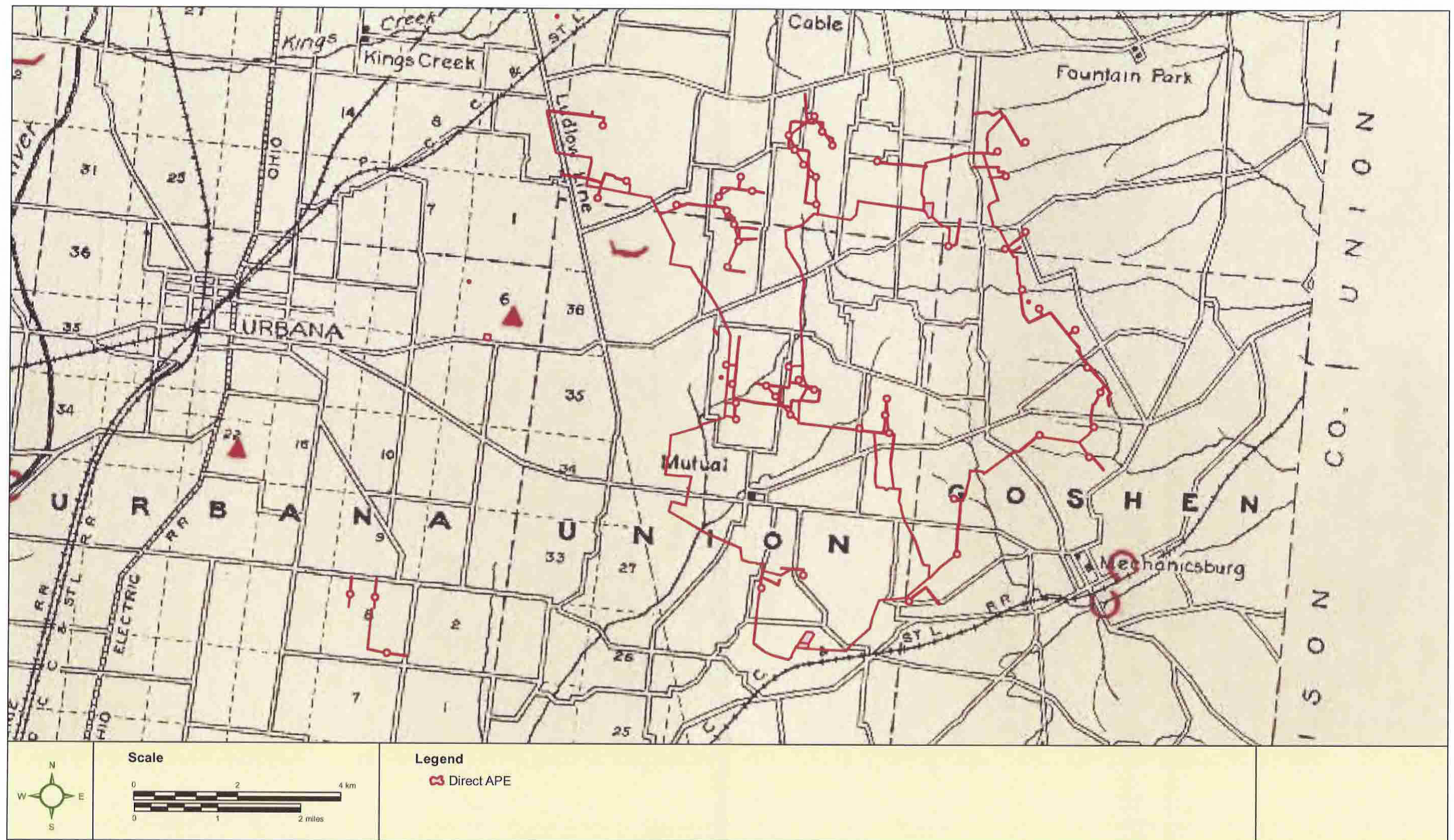


Figure 5. Direct APE for Buckeye II on the Mills Atlas (2006 [1914]).

Within the direct APE, structures are indicated on the 1916 Mechanicsburg OH USGS 15-minute quadrangle map within the proposed path of an access road associated with Turbine 124 and within a proposed buried interconnect south of Turbine 100. Structures are also indicated on the 1916 map adjacent to four buried interconnects and four access roads (Figure 6).

(2) The applicant shall estimate the impact of the proposed facility on the preservation and continued meaningfulness of these landmarks and describe plans to mitigate any adverse impact.

Aboveground Resources. In estimating the impact of the proposed Buckeye II facility on the preservation and continued meaningfulness of known historic landmarks, direct, indirect, and reasonably foreseeable future impacts to aboveground historic resources were considered. Given the nature of the proposed project, indirect visual effects are most likely, as the introduction of dozens of large wind turbines to the area may alter people's perceptions of the traditional rural character of the landscape and alter the settings of character-defining historic resources. Due to established setback requirements for turbine locations, direct effects to aboveground resources will not occur.

The Study Area for Buckeye II is very similar to the Study Area for Buckeye I, thus the evaluation of effects to historic resources for Buckeye I provides a basis for estimating the impacts of Buckeye II. The architectural survey report for Buckeye I has established that the proposed wind farm will alter the cultural landscape of the Study Area, thus a mitigation plan has been proposed to promote the continued preservation and meaningfulness of the Study Area's rural history (Heavrin et al. 2011). The proposed plan includes a Multiple Property Listing to the NRHP for Champaign County's one-room schoolhouses, an important property type identified by the survey, and a *Teaching with Historic Places Lesson Plan* about Champaign County's role in the Underground Railroad, an important historical theme identified by the consulting

parties. Plans are underway to continue consultation with OPSB, OHPO, the Champaign County Historical Society (CCHS), and the Champaign County Preservation Alliance (CCPA) to finalize this mitigation plan and formalize it in an agreement document.

Since the proposed Buckeye II development is located within the same rural area of Champaign County as Buckeye I, and since viewshed mapping indicates that the proposed project will be visible throughout the majority of the Study Area, it is clear that construction of Buckeye II also will impact the historic character of the Study Area. However, based on previous consultation with OHPO, CRA recommends that the assessment of the impacts of Buckeye II should evaluate whether or not this impact is qualitatively different from or greater than the impact of Buckeye I, considering any additional impacts to previously identified historic resources and any new impacts to previously undocumented historic resources. Since the proposed turbine locations for Buckeye II are not located immediately adjacent to known historic landmarks identified by the records review, but rather, as with Buckeye I, within the greater viewshed of these properties, CRA estimates that the impact of Buckeye II will be a general impact to the character of the area's historic landscape that is largely indistinguishable from the impact of Buckeye I.

Since the entire Buckeye II Study Area has not been previously surveyed, CRA anticipates performing a reconnaissance-level survey of the portions of the Buckeye II Study Area that were not included in the Buckeye I study in order to assess potential impacts of this project to previously unidentified historic resources. CRA will also field-verify our estimation of impact to previously recorded historic resources at that time. If it is determined that the impacts of Buckeye II are not qualitatively different from or greater than the impacts of Buckeye I, no additional work will be recommended, and no additional mitigation other than what is being considered for Buckeye I would be recommended. If,

however, it is determined that Buckeye II will result in adverse impacts to historic resources that are distinct from the impacts of Buckeye I, additional mitigation will be developed through consultation with OPSB, OHPO, CCHS, and CCPA. If additional mitigation is necessary, CRA anticipates that an off-site mitigation strategy to address the impact to the survey area as a whole rather than address impacts to individual buildings will be most appropriate. It is recommended that all mitigation efforts should occur within the Study Area and address the particular values and concerns of the local community. The ultimate goal of the mitigation efforts will be to promote the preservation and continued meaningfulness of character-defining historic resources in the Study Area.

Belowground Resources. No indirect visual impacts are anticipated for belowground archaeological resources within the Study Area. As noted in part (1) above, five previously identified archaeological sites within the Study Area appear to be located within the direct APE. All five of these sites have been previously recommended as not eligible for the NRHP (Nelson and Meece 2011).

Most of the direct APE for Buckeye II has not been previously surveyed for cultural resources. CRA anticipates performing a Phase I archaeological survey within the direct APE shown on Figures 2 and 4 to identify cultural resources within the direct APE, including re-identification of those previously identified resources within the direct APE, and to assess the effects of the proposed project on these cultural resources. Cultural resources identified within the direct APE during the Phase I survey will be documented, and if recommended as potentially eligible for the NRHP, avoided. If avoidance of site(s) potentially eligible for the NRHP is not possible, a Phase II investigation will be recommended to assess the significance of cultural resources within the direct APE. The results of the Phase I archaeological survey will be presented in a complete report of investigations to be provided at a future date following completion of the fieldwork.

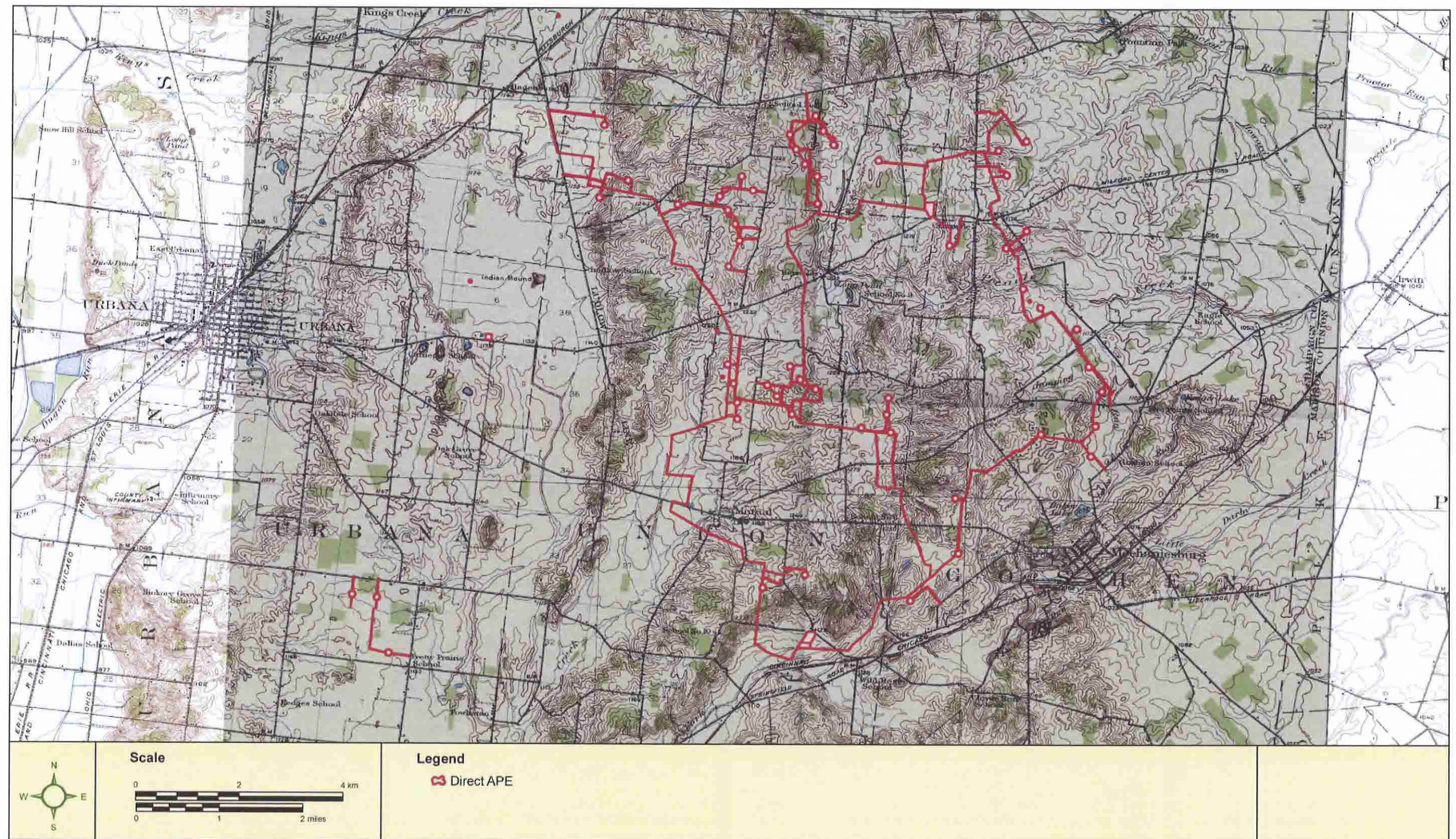
(3) Landmarks to be considered for purposes of paragraphs (D)(1) and (D)(2) of this rule are those districts, sites, buildings, structures, and objects which are recognized by, registered with, or identified as eligible for registration by the national registry of natural landmarks, the Ohio Historical Society, or the Ohio Department of Natural Resources.

Landmarks considered in the cultural resources records check include those districts, sites, buildings, structures, and objects which are recognized by, registered with, or identified as eligible for listing in the OAI, the OHI, recorded cemeteries on file with the Ohio Genealogical Society, and properties listed in or determined eligible for listing in the NRHP.

(6) The applicant shall describe measures that will be taken to minimize any adverse visual impacts created by the facility, including, but not limited to, project area location, lighting, and facility coloration. In no event shall these measures conflict with relevant safety requirements.

As described in Section (2), it appears likely that the proposed Buckeye II development will result in a visual impact to the Study Area that could affect one's understanding of the area's history as a traditional farming community. Based on the information currently available, it appears that this impact will be largely indistinguishable from the visual impact of the Buckeye I project. If this is the case, CRA recommends that the mitigation plans being developed for the Buckeye I project will adequately address the impacts of Buckeye II.

In order to more fully evaluate the potential impacts of the Buckeye II project, the applicant will initiate a Phase I cultural resource survey, including an archaeological survey and architectural reconnaissance, to assess both the direct and indirect effects of the proposed project. A report of investigations for the Phase I survey will be provided at a future date. No specific mitigation measures are proposed at this time.



III. SUMMARY AND CONCLUSIONS

CRA conducted a cultural resource records review for the proposed Buckeye II project in Champaign County, Ohio. The review was conducted on January 13, 2012, and January 16 through January 20, 2012. The records review indicates that 32 National Register sites, two National Register DOE sites, 791 structures, 260 previously recorded archaeological sites, and 51 cemeteries have been identified in OHPO databases within 5.0 mi (8.0 km) of the direct APE.

A total of 791 OHI resources have been previously recorded within 5.0 mi (8.0 km) of the direct APE, including four OHI resources surveyed during the Buckeye I project (Table 2). Slightly more than three-quarters of these resources consist of single dwellings and other residential complexes, while another 10 percent are various commercial properties. The remaining resources consist of low frequencies of barns, mills, schools, libraries, colleges, cemetery structures, a theatre, industrial, transportation, rail, other, and unknown. All but two of these OHI properties are located in Champaign County, and most are found in the towns of Urbana and Mechanicsburg. None of these properties is located within the direct APE.

A total of 51 previously identified cemeteries are located within the Study Area, but none is within the direct APE of the project.

A total of 260 archaeological sites have been previously identified within 5.0 mi (8.0 km) of the direct APE, including 10 OAI resources surveyed during the Buckeye I project (Table 3). The sites consist of 45 historic-era sites, 203 prehistoric sites, 11 sites with both historic and prehistoric components, and one site of unknown period.

It appears likely that the proposed Buckeye II development will result in a visual impact to the Study Area that could affect one's understanding of the area's history as a

traditional farming community. However, based on the information currently available, it appears that this impact will be largely indistinguishable from the visual impact of the Buckeye I project. If this is the case, CRA recommends that the mitigation plans being developed for the Buckeye I project will adequately address the impacts of Buckeye II.

With the exception of one archaeological site previously recommended as not eligible for the NRHP (Nelson and Meece 2011), the proposed project is not expected to directly impact known cultural resources within the study area. However, the majority of the direct APE for the Buckeye II project has not been systematically surveyed for cultural resources.

The Applicant will initiate a Phase I archaeological survey to assess the direct effects of the proposed project within the direct APE as shown on Figures 2 and 4, and an architectural reconnaissance to assess the indirect effects of the proposed project on the Study Area shown in Figures 2 and 3. A complete report of investigations will be provided at a future date.

REFERENCES CITED

- Addington, James E., and Wesley Clarke
1984 *A Phase I/II Archaeological Survey of Proposed Additions to the Urbana City Park, Champaign County, Ohio*. Ohio Resource Consultants, Columbus.
- Baker, Stanley W.
1996 *Phase I Cultural Resources Survey for the CLA/CHP-68-15.19/0.00 Corridor Study Located in Urbana Township, Champaign County, Ohio*. Ohio Department of Transportation, Office of Environmental Services, Columbus.
- Caldwell, Joseph A.
1875 *Caldwell's Atlas of Madison County, Ohio*. J. A. Caldwell, Condit, Ohio.
- Everts, L. H.
1875 *Illustrated Historical Atlas of Clark County, Ohio*. L. H. Everts & Co., Philadelphia.

Heavrin, Elizabeth, Robert C. Whetsell, and Ann Marie P. Doyon, with contributions by William Updike and Tonya Taylor.

2011 *Architectural Survey for the Proposed Buckeye Wind Farm in Champaign County, Ohio*. Contract Publication Series WV10-045. Cultural Resource Analysts, Inc., Lexington, Kentucky.

Lake, D. J.

1870 *Atlas of Clarke County, Ohio*. C.O. Titus, Philadelphia.

Marysville Map Co.

1908 *Union County*. Marysville Map Co., Marysville, Ohio.

Mills, William C.

1914 *Archaeological Atlas of Ohio*. Ohio State Archaeological and Historical Society.

Mowry, A. S.

1877 *Atlas of Union County, Ohio*. Harrison, Sutton, & Hare, Philadelphia.

Mustain, Chuck, and Nathan Young

1997 *Phase I Cultural Resource Management Archaeological Reconnaissance Survey for the U.S. Route 68 Preliminary Development Study Project (CHP-68-2.2446[1.52]) in Concord, Harrison, Mad River, Salem, and Urbana Townships, Champaign County, Ohio (PID 9927)*. ASC Group, Columbus.

Nelson, Christopher L., and Jamie S. Meece

2011 *Phase I Archaeological Survey for the Proposed Buckeye Wind Farm in Champaign County, Ohio*. Contract Publication Series WV10-006. Cultural Resource Analysts, Inc., Lexington, Kentucky.

Rerick Brothers

1894 *The County of Clark, Ohio*. Rerick Brothers, Richmond, Indiana.

Riordan, Robert V.

1987 *An Archaeological Survey of the Warren Grimes Bikeway in Urbana Township, Champaign County, Ohio*.

Riordan, Robert V., and Michael A. Smolek

1977 *An Archaeological Assessment of Two Interceptor Routes for the Urbana Facility Plan*.

Starr, J. W., C. E. and J. N. Headington

1874 *Atlas of Champaign County, Ohio*. 1974 reprint, Unigraphic.

Watkins, Jason

2004 *Phase I Archaeological Investigations for the Proposed Improvements to SR 56 (CHP-56-4.65; PID 75861) Located in Goshen Township, Champaign County, Ohio*. Ohio Department of Transportation, Office of Environmental Services, Columbus.

Weller von Molsdorff, Ryan J.

1997 *Phase I Cultural Resource Management Survey for the Proposed 0.6 ha (1.4 a.) Cell Tower and Access Road in Goshen Township, Champaign County, Ohio*. Applied Archaeological Services, Columbus.

Table 1. National Register Listings, DOE, and Boundaries within 5.0 miles (8.0 km) of the Direct APE.

Ref#	Resource Name	City	County	Zone	Easting	Northing
National Register Listings						
85001880	Culbertson, William, House	Mechanicsburg	Champaign	17	282060	4438900
85001881	Demand-Gest House	Mechanicsburg	Champaign	17	281920	4438760
85001882	Hamer's General Store	Mechanicsburg	Champaign	17	282240	4438440
85001884	Kimball House	Mechanicsburg	Champaign	17	281840	4438860
85001885	Lowler's Tavern	Mechanicsburg	Champaign	17	281960	4438700
85001886	Magruder Building	Mechanicsburg	Champaign	17	282100	4438600
85001887	Masonic Temple	Mechanicsburg	Champaign	17	282000	4438740
85001875	Baker, Maj. John C., House	Mechanicsburg	Champaign	17	281720	4439040
85001876	Barr House	Mechanicsburg	Champaign	17	282310	4438800
85001877	Burnham, Henry, House	Mechanicsburg	Champaign	17	281780	4439000
85001878	Church Of Our Savior	Mechanicsburg	Champaign	17	282180	4438550
85001879	Clark, Dr., House	Mechanicsburg	Champaign	17	281960	4438700
85001888	Mechanicsburg Baptist Church	Mechanicsburg	Champaign	17	281860	4438580
85001889	Ninchelser, Dr., House	Mechanicsburg	Champaign	17	281960	4438860
85001890	Rathburn, Levi, House (DELISTED)	Mechanicsburg	Champaign	17	282123	4438765
79001972	Elmwood Place	Irwin	Union	17	288305	4443742
85001893	United Methodist Church	Mechanicsburg	Champaign	17	284940	4438800
74001407	Potter, Carl, Mound	Mechanicsburg	Champaign	17	278098	4435040
74001409	Ward, John Q. A., House	Urbana	Champaign	17	266970	4442580
97000954	St Paul AME Church	Urbana	Champaign	17	265699	4443048
84002908	Scioto Street Historic District	Urbana	Champaign	17	265990	4443150
95000937	Richards-Sewall House	Urbana	Champaign	17	265100	4442700
82003550	Mosgrove, Dr. Adam, House	Urbana	Champaign	17	265270	4443190
84002909	Urbana Monument Square Historic District	Urbana	Champaign	17	265408	4443244
80002952	Urbana College, Historic Buildings of	Urbana	Champaign	17	264527	4442539
76002265	Nutwood Place	Urbana	Champaign	17	265480	4445410
DOE						
1024581	CHP0018011	Urbana	Champaign	17	265193	4443314
996332		Urbana	Champaign	17	265246	4444244
Boundaries						
85001895	Mechanicsburg Commercial Historic District	Mechanicsburg	Champaign	-	-	-
84002908	Scioto Street Historic District	Urbana	Champaign	-	-	-
84002909	Urbana Monument Square Historic District	Urbana	Champaign	-	-	-
85001883	Hunter, Norvall, Farm	Mechanicsburg	Champaign	-	-	-

Table 2. Ohio Historic Inventory Sites within 5.0 miles (8.0 km) of Direct APE.

OHI #	Present Name	Address	Place name	ArchStyle1	Date	Zone	Easting	Northing
CHP0000711	Warnick House	514 Scioto St	Urbana	Queen Anne	1885	17	266105	4443139
CHP0000811		596 Scioto St	Urbana	Queen Anne	1885	17	266348	4443110
CHP0000911		438 Scioto St	Urbana	Second Empire/Mansard	1865	17	265927	4443157
CHP0000111	Champaign Co Courthouse	200 N Main St	Urbana	International	1956	17	265372	4443349
CHP0000211		320 Scioto St	Urbana	Georgian Revival	1920	17	265758	4443175
CHP0000311		502 Scioto St	Urbana	Colonial Revival	1895	17	266075	4443142
CHP0000511		536 Scioto St	Urbana	Italian Villa	1880	17	266160	4443130
CHP0000611	Charles Stocksdales House	472 Scioto St	Urbana	Colonial Revival	1920	17	266031	4443147
CHP0001011		332 Scioto St	Urbana	Not Discernible from OHI Form	1900	17	265777	4443173
CHP0001111		114 Scioto St	Urbana	Italianate	1890	17	265469	4443202
CHP0001211		120-122 Scioto St	Urbana	Greek Revival	1860	17	265491	4443200
CHP0001311		308-310 Scioto St	Urbana	Italianate	1845	17	265700	4443181
CHP0001411		208 Scioto St	Urbana	Greek Revival	1840	17	265557	4443197
CHP0001511		202 Scioto St	Urbana	Vernacular	1840	17	265547	4443197
CHP0001611		454 Scioto St	Urbana	Eastlake	1874	17	265974	4443153
CHP0001711		334 Scioto St	Urbana	Neo-Classical Revival	1900	17	265797	4443172
CHP0001811	Lemuel Weaver House	400 Scioto St	Urbana	Gothic Revival	1845	17	265838	4443198
CHP0001911		578 Scioto St	Urbana	Italianate	1890	17	266291	4443116
CHP0002011		224 Scioto St	Urbana	Italianate	1880	17	265599	4443194
CHP0002111		300 Scioto St	Urbana	Italianate	1870	17	265671	4443185
CHP0002211		539 Scioto St	Urbana	Chateausque	1900	17	266190	4443069
CHP0002311		563 Scioto St	Urbana	Greek Revival	1870	17	266264	4443060
CHP0002411		466 Scioto St	Urbana	Italianate	1880	17	266011	4443149
CHP0002511		558 Scioto St	Urbana	Colonial Revival	1890	17	266235	4443122
CHP0002611	Kenneth Ball House	570 Scioto St	Urbana	Colonial Revival	1900	17	266273	4443118
CHP0002711		584 Scioto St	Urbana	Italianate	1890	17	266310	4443114
CHP0002811		601 Scioto St	Urbana	Georgian Revival	1930	17	266381	4443023
CHP0002911		535 Scioto St	Urbana	Queen Anne	1880	17	266166	4443076
CHP0003011	First Church of Christ Science	347-355 Scioto St	Urbana	Gothic Revival	1870	17	265784	4443128
CHP0003111		343-345 Scioto St	Urbana	Vernacular	1890	17	265770	4443129
CHP0003211		335 Scioto St	Urbana	Italianate	1860	17	265757	4443131

OHI #	Present Name	Address	Place name	ArchStyle1	Date	Zone	Easting	Northing
CHP0003311		331 Scioto St	Urbana	Vernacular	1890	17	265744	4443132
CHP0003511		239 Scioto St	Urbana	Greek Revival	1850	17	265628	4443146
CHP0003611		301 Scioto St	Urbana	Italianate	1850	17	265666	4443141
CHP0003711		325 Scioto St	Urbana	Gothic Revival	1850	17	265731	4443134
CHP0003811		317 Scioto St	Urbana	Vernacular	1880	17	265709	4443136
CHP0003911		125 Scioto St	Urbana	Italianate	1895	17	265500	4443162
CHP0004011		307 Scioto St	Urbana	Queen Anne	1900	17	265681	4443139
CHP0004111	Easton Bldg	127 Scioto St	Urbana	Italianate	1897	17	265512	4443161
CHP0004211	Church of the Epiphany Episc	230 Scioto St	Urbana	Gothic Revival	1850	17	265632	4443203
CHP0004311		225 Scioto St	Urbana	Colonial Revival	1895	17	265592	4443148
CHP0004411		123 Scioto St	Urbana	Vernacular	1860	17	265487	4443163
CHP0004511	Hotel Sowles 1888	115 Scioto St	Urbana	Italianate	1888	17	265459	4443166
CHP0004611		229 Scioto St	Urbana	Vernacular	1900	17	265604	4443148
CHP0004711		221 Scioto St	Urbana	Greek Revival	1850	17	265580	4443149
CHP0004811		213-219 Scioto St	Urbana	Greek Revival	1850	17	265568	4443150
CHP0004911		119 Scioto St	Urbana	Italianate	1860	17	265473	4443164
CHP0005011		724 S Main St	Urbana	Italianate	1875	17	265259	4442280
CHP0005111		20 Monument Sq	Urbana	Federal	1811	17	265368	4443160
CHP0005211		119 S Main St	Urbana	Italianate	1895	17	265399	4443111
CHP0005311		24-27 Monument Sq	Urbana	Second Empire/Mansard	1870	17	265336	4443178
CHP0005411		10-13 Monument Sq	Urbana	Italianate	1880	17	265427	4443177
CHP0005511		33 Monument Sq	Urbana	Italianate	1875	17	265350	4443220
CHP0005611		20-23 Monument Sq	Urbana	Vernacular	1850	17	265356	4443160
CHP0005711	North Side Miami on Square	31 Monument Sq	Urbana	Greek Revival	1865	17	265350	4443211
CHP0005811		445 S Main St	Urbana	Greek Revival	1840	17	265355	4442682
CHP0005911		425 S Main St	Urbana	Greek Revival	1845	17	265360	4442733
CHP0006011		413 S Main St	Urbana	Vernacular	1850	17	265367	4442776
CHP0006111		401 S Main St	Urbana	Queen Anne	1880	17	265370	4442804
CHP0006211		16-17 Monument Sq	Urbana	Vernacular	1890	17	265418	4443162
CHP0006311		333 S Main St	Urbana	Stick	1885	17	265371	4442838
CHP0006411		331 S Main St	Urbana	Eastlake	1885	17	265373	4442855
CHP0006511		319 S Main St	Urbana	Vernacular	1830	17	265375	4442871

OHI #	Present Name	Address	Place name	ArchStyle1	Date	Zone	Easting	Northing
CHP0006611		313 S Main St	Urbana	Eastlake	1880	17	265377	4442887
CHP0006711		115-117 S Main St	Urbana	Italianate	1895	17	265400	4443122
CHP0006811		517 S Main St	Urbana	Italianate	1870	17	265348	4442599
CHP0006911		527-531 S Main St	Urbana	Greek Revival	1845	17	265346	4442569
CHP0007011		533 S Main St	Urbana	Italianate	1870	17	265344	4442554
CHP0007111		605 S Main St	Urbana	Renaissance Revival	1870	17	265338	4442500
CHP0007211	S Hill House	559-569 S Main St	Urbana	Greek Revival	1840	17	265376	4442524
CHP0007311		609 S Main St	Urbana	Greek Revival	1850	17	265336	4442481
CHP0007411		619 S Main St	Urbana	Greek Revival	1850	17	265335	4442465
CHP0007511		705 S Main St	Urbana	Eastlake	1890	17	265321	4442328
CHP0007611		627 S Main St	Urbana	Tudor/English Revival	1890	17	265328	4442421
CHP0007711		647 S Main St	Urbana	Queen Anne	1885	17	265323	4442359
CHP0007811		703 S Main St	Urbana	Queen Anne	1890	17	265321	4442343
CHP0007911		630 S Main St	Urbana	Queen Anne	1895	17	265276	4442424
CHP0008011		702 S Main St	Urbana	Italianate	1870	17	265266	4442341
CHP0008111	Russell T Bundy Assoc	400 E Reynolds St	Urbana	Vernacular	1870	17	265846	4442778
CHP0008211		604 S Main St	Urbana	Greek Revival	1850	17	265283	4442499
CHP0008311		538 S Main St	Urbana	Greek Revival	1850	17	265291	4442550
CHP0008411		546 S Main St	Urbana	Queen Anne	1895	17	265289	4442534
CHP0008511		428 S Main St	Urbana	Queen Anne	1880	17	265313	4442724
CHP0008611		430 S Main St	Urbana	Queen Anne	1880	17	265312	4442711
CHP0008711		436 S Main St	Urbana	Queen Anne	1885	17	265310	4442697
CHP0008811		442 S Main St	Urbana	Queen Anne	1885	17	265309	4442683
CHP0008911		522 S Main St	Urbana	Italianate	1880	17	265293	4442583
CHP0009011	Colored School	325 E Water St	Urbana	Greek Revival	1865	17	265705	4442866
CHP0009111		237 E Court St	Urbana	Italianate	1875	17	265645	4443269
CHP0009211		311 E Court St	Urbana	Greek Revival	1860	17	265710	4443263
CHP0009311		219 E Court St	Urbana	Vernacular	1890	17	265595	4443274
CHP0009411		303 E Court St	Urbana	Vernacular	1880	17	265680	4443265
CHP0009511	Eagles Lodge #979	127 E Court St	Urbana	Italianate	1885	17	265497	4443286
CHP0009611		111 E Court St	Urbana	Italianate	1875	17	265435	4443291
CHP0009711		126 E Court St	Urbana	Italianate	1890	17	265487	4443326

OHI #	Present Name	Address	Place name	ArchStyle1	Date	Zone	Easting	Northing
CHP0009811		115 E Court St	Urbana	Italianate	1880	17	265448	4443290
CHP0009911		112 E Court St	Urbana	Italianate	1881	17	265448	4443330
CHP0010011		116 E Court St	Urbana	Italianate	1880	17	265464	4443328
CHP0010111		343-345 E Court St	Urbana	Italianate	1885	17	265820	4443245
CHP0010211		203 E Court St	Urbana	Vernacular	1880	17	265556	4443278
CHP0010311		400 E Court St	Urbana	Italianate	1880	17	265863	4443287
CHP0010411		450 E Court St	Urbana	Italianate	1875	17	266011	4443270
CHP0010511		119 E Court St	Urbana	Greek Revival	1845	17	265462	4443290
CHP0010611		429 E Court St	Urbana	Italianate	1865	17	265946	4443231
CHP0010711		464 E Court St	Urbana	Italianate	1870	17	266049	4443266
CHP0010811		510 E Church St	Urbana	Queen Anne	1895	17	266115	4443369
CHP0010911		520 E Church St	Urbana	Queen Anne	1885	17	266141	4443366
CHP0011011		502 E Church St	Urbana	Queen Anne	1885	17	266094	4443371
CHP0011111		213 E Church St	Urbana	Gothic Revival	1885	17	265594	4443387
CHP0011211		220-222 E Church St	Urbana	Vernacular	1900	17	265627	4443425
CHP0011311		230 E Church St	Urbana	Italianate	1880	17	265653	4443422
CHP0011411		323 E Church St	Urbana	Vernacular	1880	17	265772	4443367
CHP0011511		207 E Court St	Urbana	Italianate	1875	17	265568	4443277
CHP0011611		212 E Church St	Urbana	Vernacular	1900	17	265601	4443427
CHP0011711		346 E Church St	Urbana	Gothic Revival	1880	17	265822	4443402
CHP0011811		410 E Church St	Urbana	Vernacular	1874	17	265894	4443394
CHP0011911		223 E Church St	Urbana	Vernacular	1900	17	265620	4443385
CHP0012011		333 E Church St	Urbana	Queen Anne	1885	17	265790	4443365
CHP0012111		407 E Church St	Urbana	Vernacular	1900	17	265880	4443355
CHP0012211		409 E Church St	Urbana	Bungalow	1900	17	265894	4443353
CHP0012311		341 E Church St	Urbana	Gothic Revival	1880	17	265808	4443363
CHP0012411		348 E Church St	Urbana	Bungalow	1900	17	265831	4443402
CHP0012511		438-440 E Church St	Urbana	Italianate	1880	17	265991	4443382
CHP0012611		319 E Court St	Urbana	Italianate	1875	17	265725	4443261
CHP0012711		446 E Church St	Urbana	Queen Anne	1895	17	266018	4443380
CHP0012811		452 E Church St	Urbana	Italianate	1880	17	266031	4443378
CHP0012911		462 E Church St	Urbana	Queen Anne	1890	17	266045	4443377

OHI #	Present Name	Address	Place name	ArchStyle1	Date	Zone	Easting	Northing
CHP0013011		412 E Church St	Urbana	Vernacular	1880	17	265905	4443393
CHP0013111		351 E Church St	Urbana	Gothic Revival	1880	17	265826	4443361
CHP0013211		445 E Church St	Urbana	Vernacular	1895	17	266002	4443340
CHP0013311		420 E Church St	Urbana	Italianate	1875	17	265926	4443391
CHP0013411		403 E Church St	Urbana	Vernacular	1900	17	265867	4443356
CHP0013511		324-326 E Church St	Urbana	Gothic Revival	1880	17	265777	4443408
CHP0013611		451 E Church St	Urbana	Queen Anne	1880	17	266015	4443339
CHP0013711		511 E Church St	Urbana	Queen Anne	1885	17	266116	4443328
CHP0013811		130 E Church St	Urbana	Vernacular	1890	17	265525	4443436
CHP0013911		137 E Church St	Urbana	Neo-Classical Revival	1900	17	265535	4443393
CHP0014011		201 E Church St	Urbana	Italianate	1880	17	265568	4443389
CHP0014111		106-108 S Main St	Urbana	Vernacular	1895	17	265362	4443146
CHP0014211		110 S Main St	Urbana	Italianate	1890	17	265360	4443128
CHP0014311	Egenberge Bldg	114 S Main St	Urbana	Italianate	1885	17	265359	4443113
CHP0014411		208 E Church St	Urbana	Greek Revival	1890	17	265587	4443429
CHP0014511		202 E Church St	Urbana	Greek Revival	1870	17	265574	4443430
CHP0014611		136 E Ward St	Urbana	Not Discernible from OHI Form	1890	17	265552	4443557
CHP0014711	Urbana Monument Co	113 E Church St	Urbana	Vernacular	1868	17	265464	4443400
CHP0014811		116 E Ward St	Urbana	Gothic Revival	1890	17	265489	4443564
CHP0014911		119 E Ward St	Urbana	Italianate	1880	17	265488	4443523
CHP0015011		133 E Church St	Urbana	Vernacular	1880	17	265521	4443394
CHP0015111		131 E Ward St	Urbana	Queen Anne	1885	17	265532	4443518
CHP0015211		208 E Ward St	Urbana	Italianate	1880	17	265602	4443553
CHP0015311		126 E Ward St	Urbana	Vernacular	1880	17	265520	4443560
CHP0015411		225 E Ward St	Urbana		1880	17	265648	4443508
CHP0015511		222 E Ward St	Urbana	Italianate	1885	17	265640	4443550
CHP0015611		134 E Church St	Urbana	Neo-Classical Revival	1900	17	265539	4443435
CHP0015811		231 E Ward St	Urbana	Vernacular	1890	17	265660	4443507
CHP0015911	Browne Hall	518 W Reynolds St	Urbana	Queen Anne	1880	17	264832	4442864
CHP0016011	Oak Hall	end of College Way	Urbana	Greek Revival	1856	17	264471	4442474
CHP0016111	Bailey & Barclay Halls	end of College Way	Urbana	Italian Villa	1856	17	264561	4442573
CHP0016211		528 N Main St	Urbana	Vernacular	1880	17	265429	4443765

OHI #	Present Name	Address	Place name	ArchStyle1	Date	Zone	Easting	Northing
CHP0016311		535 N Main St	Urbana	Gothic Revival	1880	17	265484	4443777
CHP0016411		104 Lafayette Ave	Urbana	Queen Anne	1905	17	265488	4443818
CHP0016511		548-550 N Main St	Urbana	Neo-Classical Revival	1900	17	265432	4443799
CHP0016611		432 N Main St	Urbana	Italianate	1865	17	265414	4443661
CHP0016711		429 N Main St	Urbana	Italianate	1875	17	265464	4443641
CHP0016811		507 N Main St	Urbana	Italianate	1860	17	265474	4443707
CHP0016911		433 N Main St	Urbana	Italianate	1880	17	265466	4443655
CHP0017011		423 N Main St	Urbana	Gothic Revival	1875	17	265464	4443628
CHP0017111		527 N Main St	Urbana	Gothic Revival	1875	17	265482	4443759
CHP0017211		522 N Main St	Urbana	Greek Revival	1855	17	265427	4443748
CHP0017311		518 N Main St	Urbana	Vernacular	1890	17	265425	4443732
CHP0017411		517 N Main St	Urbana	Vernacular	1880	17	265479	4443742
CHP0017511		505 N Main St	Urbana	Gothic Revival	1830	17	265471	4443690
CHP0017611		513 N Main St	Urbana	Greek Revival	1835	17	265476	4443725
CHP0017711		115 W Court St	Urbana	Gothic Revival	1850	17	265343	4443299
CHP0017811		127 W Court St	Urbana	Greek Revival	1857	17	265312	4443302
CHP0017911		215-217 W Church St	Urbana	Greek Revival	1880	17	265222	4443426
CHP0018011		221 W Court St	Urbana	Italianate	1865	17	265193	4443314
CHP0018111		237 W Court St	Urbana	Italianate	1875	17	265151	4443318
CHP0018211	1st Presbyterian Church	116 W Court St	Urbana	Richardsonian Romanesque	1894	17	265317	4443350
CHP0018311		218 W Court St	Urbana	Italianate	1860	17	265209	4443355
CHP0018411	Hollingshead Funeral Home	318 N Main St	Urbana	Italianate	1875	17	265395	4443484
CHP0018511	1st Baptist Church	401 N Main St	Urbana	Gothic Revival	1882	17	265451	4443565
CHP0018611	American Legion	420 N Main St	Urbana	Queen Anne	1890	17	265411	4443607
CHP0018711		426 N Main St	Urbana	Italianate	1860	17	265413	4443626
CHP0018811		412 N Main St	Urbana	Vernacular	1870	17	265410	4443594
CHP0018911		406 N Main St	Urbana	Italianate	1875	17	265410	4443581
CHP0019011		400 N Main St	Urbana	Greek Revival	1855	17	265409	4443569
CHP0019111		538 N Main St	Urbana	Colonial Revival	1900	17	265430	4443782
CHP0019211		609 N Main St	Urbana	Gothic Revival	1880	17	265503	4443858
CHP0019411		301 W Church St	Urbana	Italianate	1880	17	265128	4443437
CHP0019511		SEC Dewey & W Court	Urbana	Federal	1860	17	264987	4443346

OHI #	Present Name	Address	Place name	ArchStyle1	Date	Zone	Easting	Northing
CHP0019611		309 W Court St	Urbana	Vernacular	1880	17	265102	4443324
CHP0019711		301 W Court St	Urbana	Vernacular	1890	17	265116	4443323
CHP0019811		201 W Court St	Urbana	Italianate	1858	17	265247	4443308
CHP0019911		209 W Court St	Urbana	Greek Revival	1865	17	265220	4443311
CHP0020011		133 W Church St	Urbana	Queen Anne	1885	17	265294	4443417
CHP0020111		203 W Church St	Urbana	Gothic Revival	1865	17	265254	4443417
CHP0020211		106 W Church St	Urbana	Vernacular	1890	17	265386	4443451
CHP0020311		116 W Church St	Urbana	Greek Revival	1865	17	265354	4443461
CHP0020411		122-124 W Church St	Urbana	Italianate	1890	17	265330	4443463
CHP0020511		134 W Church St	Urbana	Gothic Revival	1850	17	265304	4443465
CHP0020611		204 W Church St	Urbana	Vernacular	1865	17	265261	4443469
CHP0020711		222 W Church St	Urbana	Colonial Revival	1905	17	265204	4443475
CHP0020811		234 W Church St	Urbana	Gothic Revival	1845	17	265171	4443477
CHP0020911		315 W Church St	Urbana	Gothic Revival	1875	17	265096	4443439
CHP0021011		231 N Main St	Urbana	Vernacular	1910	17	265433	4443395
CHP0021111	Home Loan Co Bldg	227 N Main St	Urbana	Neo-Classical Revival	1910	17	265433	4443388
CHP0021211	Heatherman Bldg	237 N Main St	Urbana	Vernacular	1906	17	265434	4443402
CHP0021311	Williams Furniture	215-223 N Main St	Urbana	Italianate	1890	17	265431	4443361
CHP0021410	Cedar Bog Curator House	980 Woodburn Rd	Urbana (Township of)	Federal	1835	17	261880	4437867
CHP0021611	Evangelical Lutheran Church	SEC W Court & Walnut	Urbana	High Victorian Gothic	1885	17	265285	4443303
CHP0021711		205 W Court St	Urbana	Greek Revival	1860	17	265234	4443310
CHP0021811		231-233 W Court St	Urbana	Vernacular	1865	17	265165	4443317
CHP0021911		238 W Court St	Urbana	Dutch Colonial Revival	1920	17	265155	4443361
CHP0022011		119 W Ward St	Urbana	Vernacular	1890	17	265369	4443536
CHP0022111		121-123 W Ward St	Urbana	Vernacular	1840	17	265352	4443537
CHP0022211		137 W Ward St	Urbana	Gothic Revival	1890	17	265312	4443539
CHP0022311		213 W Ward St	Urbana	Vernacular	1900	17	265245	4443548
CHP0022411		202 W Ward St	Urbana	Gothic Revival	1890	17	265277	4443585
CHP0022511		216 W Ward St	Urbana	Gothic Revival	1870	17	265233	4443588
CHP0022611		134 W Ward St	Urbana	Vernacular	1890	17	265321	4443582
CHP0022711		132 W Ward St	Urbana	Italianate	1890	17	265332	4443581
CHP0022811		114 W Ward St	Urbana	Queen Anne	1880	17	265377	4443578

OHI #	Present Name	Address	Place name	ArchStyle1	Date	Zone	Easting	Northing
CHP0022911		112 W Ward St	Urbana	Vernacular	1900	17	265389	4443572
CHP0023011		122 W Ward St	Urbana	Vernacular	1890	17	265364	4443579
CHP0023111		126 W Ward St	Urbana	Italianate	1860	17	265348	4443580
CHP0023211		230 W Court St	Urbana	Queen Anne	1890	17	265168	4443359
CHP0023311		430 N Main St	Urbana	Italianate	1880	17	265413	4443644
CHP0023411		122-124 Miami St	Urbana	Vernacular	1895	17	265285	4443220
CHP0023511	Moose Lodge	116-120 Miami St	Urbana	Italianate	1890	17	265299	4443219
CHP0023611	Mosgrove Building	117-119 Miami St	Urbana	Richardsonian Romanesque	1889	17	265295	4443182
CHP0023711		127 Miami St	Urbana	Greek Revival	1835	17	265268	4443185
CHP0023811	Champaign Co Library	160 W Market St	Urbana	Georgian Revival	1930	17	265263	4443099
CHP0023911		218 W Market St	Urbana	Greek Revival	1890	17	265172	4443116
CHP0024011		137 W Market St	Urbana	Gothic Revival	1835	17	265258	4443053
CHP0024111		127 W Market St	Urbana	Gothic Revival	1840	17	265288	4443050
CHP0024211		211 W Market St	Urbana	Greek Revival	1840	17	265187	4443061
CHP0024311		221 W Market St	Urbana	Second Empire/Mansard	1865	17	265156	4443064
CHP0024411		233 W Water St	Urbana	Italian Villa	1880	17	265120	4442952
CHP0024511		132 W Reynolds St	Urbana		1858	17	265241	4442856
CHP0024611		212 W Reynolds St	Urbana	Not Discernible from OHI Form	1870	17	265172	4442864
CHP0024711		216 W Reynolds St	Urbana	Vernacular	1865	17	265155	4442866
CHP0024811		224 W Reynolds St	Urbana	Italianate	1865	17	265132	4442868
CHP0024911		123 W Reynolds St	Urbana	Vernacular	1880	17	265270	4442805
CHP0025011		131 W Reynolds St	Urbana	Gothic Revival	1870	17	265250	4442801
CHP0025111		314 Miami St	Urbana	Italianate	1880	17	265070	4443280
CHP0025211		309 Miami St	Urbana	Colonial Revival	1895	17	265088	4443201
CHP0025311		121 N Russell St	Urbana	Italianate	1870	17	265049	4443263
CHP0025411	Mosgrove House	323 Miami St	Urbana	Greek Revival	1842	17	265051	4443205
CHP0025511		123 N Russell St	Urbana	Italianate	1870	17	265051	4443282
CHP0025611		409-411 Miami St	Urbana	Italianate	1880	17	264984	4443212
CHP0025711		406 Miami St	Urbana	Vernacular	1850	17	264992	4443257
CHP0025811		403 Miami St	Urbana	Greek Revival	1860	17	265000	4443211
CHP0025911		235 Boyce St	Urbana	Greek Revival	1865	17	265727	4443992
CHP0026011	Dr SV Rader	113 Miami St	Urbana	Italianate	1870	17	265315	4443181

OHI #	Present Name	Address	Place name	ArchStyle1	Date	Zone	Easting	Northing
CHP0026111		326 College St	Urbana	Italianate	1865	17	264993	4442740
CHP0026211		407 W Reynolds St	Urbana	Vernacular	1870	17	264956	4442828
CHP0026411		501 W Reynolds St	Urbana	Colonial Revival	1870	17	264907	4442810
CHP0026511		225 College St	Urbana	Craftsman/Arts and Crafts	1900	17	265087	4442666
CHP0026611	Kinder Oaks	400 College St	Urbana	Tudor/English Revival	1930	17	264868	4442755
CHP0026711		335 College St	Urbana	Not Discernible from OHI Form	1850	17	264950	4442669
CHP0026811		413 W Reynolds St	Urbana	Vernacular	1875	17	264941	4442822
CHP0026911		222 College St	Urbana	Italianate	1895	17	265126	4442722
CHP0027011		417 W Reynolds St	Urbana	Vernacular	1890	17	264925	4442816
CHP0027111		314-316 W Reynolds St	Urbana	Queen Anne	1880	17	265031	4442882
CHP0027211		414 W Reynolds St	Urbana	Queen Anne	1890	17	264941	4442878
CHP0027311		228 College St	Urbana	Queen Anne	1895	17	265092	4442719
CHP0027411		322 W Reynolds St	Urbana	Eastlake	1875	17	265012	4442884
CHP0027511		325 W Reynolds St	Urbana	Gothic Revival	1865	17	265000	4442831
CHP0027611		317 W Reynolds St	Urbana	Not Discernible from OHI Form	1900	17	265027	4442830
CHP0027711		302 W Reynolds St	Urbana	Queen Anne	1888	17	265068	4442880
CHP0027811		235 W Reynolds St	Urbana	Greek Revival	1870	17	265104	4442824
CHP0027911		227 W Reynolds St	Urbana	Italianate	1870	17	265127	4442822
CHP0028011		232 W Reynolds St	Urbana	Italianate	1870	17	265108	4442870
CHP0028111		201 W Reynolds St	Urbana	Italianate	1870	17	265188	4442816
CHP0028211		219 W Reynolds St	Urbana	Greek Revival	1860	17	265144	4442821
CHP0028311	US Post Office	200 S Main St	Urbana	Georgian Revival	1932	17	265343	4443041
CHP0028411	Desmond Stephan Mfg Co	317 S Walnut St	Urbana	Vernacular	1890	17	265245	4442907
CHP0028511		209 S Dewey St	Urbana	Queen Anne	1885	17	264950	4442992
CHP0028611		208 S Dewey St	Urbana	Vernacular	1890	17	264902	4442997
CHP0028711		212 College St	Urbana	Italianate	1860	17	265148	4442716
CHP0028811	Walnut St Twin Houses	439-441 S Walnut St	Urbana	Vernacular	1890	17	265224	4442707
CHP0028911		311 W Reynolds St	Urbana	Neo-Classical Revival	1890	17	265044	4442833
CHP0029011		227 W Church St	Urbana	Gothic Revival	1870	17	265192	4443428
CHP0029211	Abbott House	310 Lafayette Ave	Urbana	Queen Anne	1885	17	265772	4443789
CHP0029311		215 Lafayette Ave	Urbana	Queen Anne	1885	17	265653	4443756
CHP0029411		223 Lafayette Ave	Urbana	Gothic Revival	1880	17	265666	4443755

OHI #	Present Name	Address	Place name	ArchStyle1	Date	Zone	Easting	Northing
CHP0029511		337 Lafayette Ave	Urbana	Gothic Revival	1875	17	265842	4443738
CHP0029611		314-318 Lafayette Ave	Urbana	Italianate	1880	17	265787	4443788
CHP0029711		227 Lafayette Ave	Urbana	Italianate	1880	17	265679	4443754
CHP0029811		331 Lafayette Ave	Urbana	Gothic Revival	1875	17	265827	4443739
CHP0029911		119 Lafayette Ave	Urbana	Colonial Revival	1895	17	265528	4443765
CHP0030011		108-112 Lafayette Ave	Urbana	Colonial Revival	1890	17	265504	4443817
CHP0030111		132 Lafayette Ave	Urbana	Colonial Revival	1895	17	265570	4443812
CHP0030211		134-136 Lafayette Ave	Urbana	Georgian Revival	1895	17	265586	4443810
CHP0030311		422 Lafayette Ave	Urbana	Italianate	1890	17	265957	4443768
CHP0030411		409 Lafayette Ave	Urbana		1900	17	265923	4443729
CHP0030511		428 Lafayette Ave	Urbana	Vernacular	1910	17	265987	4443763
CHP0030611		402 Lafayette Ave	Urbana	Italianate	1875	17	265912	4443774
CHP0030711		349 Lafayette Ave	Urbana	Italianate	1880	17	265871	4443735
CHP0030811		339 Lafayette Ave	Urbana	Italianate	1880	17	265856	4443737
CHP0030911		535 Washington Ave	Urbana	Vernacular	1875	17	266214	4443562
CHP0031011		210 Lafayette Ave	Urbana	Vernacular	1880	17	265641	4443804
CHP0031111	Baker House	505 E Court St	Urbana	Vernacular	1945	17	266084	4443202
CHP0031211		350 E Ward St	Urbana	Vernacular	1890	17	265836	4443528
CHP0031311		346 Lafayette Ave	Urbana	Italianate	1875	17	265876	4443777
CHP0031411	McComb House	562 E Ward St	Urbana	Gothic Revival	1875	17	266280	4443479
CHP0031511		732 E Lawn Ave	Urbana	High Victorian Gothic	1870	17	266435	4444053
CHP0031611		327 E Ward St	Urbana	Greek Revival	1860	17	265785	4443493
CHP0031711		467 E Ward St	Urbana	Vernacular	1890	17	266069	4443458
CHP0031811		313 Lafayette Ave	Urbana	Italianate	1875	17	265767	4443746
CHP0031911		304 Lafayette Ave	Urbana	Italian Villa	1880	17	265742	4443793
CHP0032011		234 E Ward St	Urbana	Vernacular	1890	17	265677	4443546
CHP0032111		411 Lafayette Ave	Urbana	Gothic Revival	1880	17	265938	4443728
CHP0032211		417 Lafayette Ave	Urbana	Vernacular	1880	17	265953	4443726
CHP0032311		446-448 Lafayette Ave	Urbana	Italianate	1880	17	266047	4443758
CHP0032411		435 Lafayette Ave	Urbana	Not Discernible from OHI Form	1900	17	266012	4443719
CHP0032511		307 Lafayette Ave	Urbana	Shingle	1890	17	265752	4443747
CHP0032611		101 Lafayette Ave	Urbana	Dutch Colonial Revival	1929	17	265511	4443773

OHI #	Present Name	Address	Place name	ArchStyle1	Date	Zone	Easting	Northing
CHP0032711		214 Lafayette Ave	Urbana	Gothic Revival	1880	17	265656	4443803
CHP0032811		422 Washington Ave	Urbana	Vernacular	1875	17	265957	4443641
CHP0032911		353 Washington Ave	Urbana	Vernacular	1880	17	265872	4443603
CHP0033011		220-222 Lafayette Ave	Urbana		1880	17	265675	4443801
CHP0033111		404 Washington Ave	Urbana	Queen Anne	1890	17	265899	4443649
CHP0033211		314 Washington Ave	Urbana	Gothic Revival	1880	17	265772	4443662
CHP0033311		337-339 E Ward St	Urbana	Gothic Revival	1880	17	265813	4443490
CHP0033411		354 E Ward St	Urbana	Vernacular	1890	17	265848	4443526
CHP0033511		402 E Ward St	Urbana	Not Discernible from OHI Form	1890	17	265862	4443525
CHP0033611		553 E Lawn Ave	Urbana	Italianate	1880	17	266483	4443723
CHP0033711		303 E Lawn Ave	Urbana	Italianate	1870	17	266413	4443331
CHP0033811	Sycamore St Store	315 Sycamore St	Urbana	Vernacular	1900	17	266107	4443410
CHP0033911	Sycamore Market	314 Sycamore St	Urbana	Italianate	1875	17	266058	4443412
CHP0034011		209 E Lawn Ave	Urbana	Vernacular	1875	17	266402	4443235
CHP0034111		114 Lafayette Ave	Urbana	Colonial Revival	1890	17	265521	4443816
CHP0034211		221 College St	Urbana	Vernacular	1900	17	265120	4442663
CHP0034311		612 Boyce St	Urbana	Vernacular	1890	17	266367	4443974
CHP0034411		539 Boyce St	Urbana	Vernacular	1855	17	266212	4443934
CHP0034511		127 E Reynolds St	Urbana	Gothic Revival	1880	17	265435	4442793
CHP0034611		347 Boyce St	Urbana	Vernacular	1865	17	265894	4443976
CHP0034711		336 Boyce St	Urbana	Vernacular	1865	17	265870	4444027
CHP0034811		337 Boyce St	Urbana	Vernacular	1870	17	265870	4443978
CHP0034911		338 Boyce St	Urbana	Vernacular	1890	17	265888	4444025
CHP0035011		350 Boyce St	Urbana	Vernacular	1880	17	265907	4444024
CHP0035111		410 Boyce St	Urbana	Vernacular	1870	17	265963	4444019
CHP0035211		815 N Main St	Urbana	Italianate	1885	17	265594	4444250
CHP0035311		820 N Main St	Urbana	Gothic Revival	1880	17	265543	4444265
CHP0035411		749 N Main St	Urbana	Vernacular	1860	17	265574	4444142
CHP0035511		200 W Reynolds St	Urbana	Vernacular	1870	17	265196	4442862
CHP0035611		753 N Main St	Urbana	Italianate	1860	17	265578	4444161
CHP0035711		731 E Lawn Ave	Urbana	Italianate	1880	17	266531	4444037
CHP0035811	Nutwood Place	1428 Nutwood Place	Urbana	Federal	1810	17	265454	4445336

OHI #	Present Name	Address	Place name	ArchStyle1	Date	Zone	Easting	Northing
CHP0035911	Carolyn Ave Farm	1201 Norwood Ave	Urbana	Italianate	1880	17	264262	4444906
CHP0036011		232 Boyce St	Urbana	Gothic Revival	1865	17	265728	4444040
CHP0036111		111 E Lawn Ave	Urbana	Vernacular	1870	17	266393	4443126
CHP0036211		883 Scioto St	Urbana	Other	1948	17	267231	4442943
CHP0036311		428 Boyce St	Urbana	Italianate	1880	17	266022	4444012
CHP0036411	Stickley Insurance Agency	128 N Main St	Urbana	Italianate	1875	17	265380	4443299
CHP0036511	Champaign Glass Co	410 Miami St	Urbana		1870	17	264980	4443258
CHP0036611		922 S Main St	Urbana	Vernacular	1875	17	265215	4441891
CHP0036711	Nicole's Fashions	319 N Main St	Urbana	Vernacular	1860	17	265446	4443495
CHP0036811	Staddler's Clothing-Bus Equip	125-127 N Main St	Urbana	Italianate	1870	17	265421	4443293
CHP0036911	Crosby Drugs	123 N Main St	Urbana	Italianate	1875	17	265421	4443281
CHP0037011		552 Scioto St	Urbana	Italianate	1885	17	266216	4443124
CHP0037111	James McKeever House	542 Scioto St	Urbana	Italianate	1880	17	266198	4443126
CHP0037211		527 Scioto St	Urbana		1860	17	266141	4443079
CHP0037311	Russell Ludwick House	511 Scioto St	Urbana	Italianate	1875	17	266086	4443075
CHP0037411	Chance House	463 Scioto St	Urbana	Gothic Revival	1860	17	265994	4443085
CHP0037511	Belva Stallsmith House	445 Scioto St	Urbana	Italianate	1880	17	265947	4443090
CHP0037611	Clarence J Brown Jr House	430 Scioto St	Urbana	Italianate	1870	17	265903	4443160
CHP0037711		443? Scioto St	Urbana	Queen Anne	1885	17	265917	4443090
CHP0037811	James Johnson House	419 Scioto St	Urbana	Italian Villa	1865	17	265877	4443093
CHP0037911	Edythe Huston House	413 Scioto St	Urbana	Vernacular	1875	17	265855	4443117
CHP0038011	Barnhart's & Crabill's Hambrgr	602 N Main St	Urbana	Vernacular	1925	17	265471	4443887
CHP0038111	Hardware/Farm Supply Store	101 Talbot Ave	Urbana	Vernacular	1900	17	265705	4444207
CHP0038211	Boldman Printing Co Bldg	122 S Main St	Urbana	Italianate	1900	17	265358	4443098
CHP0038311	Perpetual Fed Savings & Loan	124-126 N Main St	Urbana	Neo-Classical Revival	1925	17	265379	4443287
CHP0038411	Guild Galleries Interiors	118 N Main St	Urbana	Italianate	1901	17	265378	4443274
CHP0038511	Beneficial Loan Bldg	108 Miami St	Urbana	Vernacular	1920	17	265322	4443217
CHP0038611	Urbana TV & Audio	106 Miami St	Urbana	Vernacular	1920	17	265334	4443216
CHP0038711	Urbana Cinema	216 S Main St	Urbana	Art Moderne	1905	17	265342	4443012
CHP0038811	Cycle Lab	400 Miami St	Urbana		1900	17	265009	4443255
CHP0038911	Urbana Mills Grain Elevator	716 Miami St	Urbana	Vernacular	1870	17	264737	4443423
CHP0039011	City Bakery	225 N Main St	Urbana	Vernacular	1900	17	265432	4443381

OHI #	Present Name	Address	Place name	ArchStyle1	Date	Zone	Easting	Northing
CHP0039111	Western Auto	111 S Main St	Urbana	Vernacular	1895	17	265401	4443133
CHP0039211	Gaumer Printing & WCOM Radio	225 S Main St	Urbana	Commercial/Chicago Style	1930	17	265389	4442970
CHP0039311	State Farm Insurance	125 S Main St	Urbana	Italianate	1895	17	265397	4443089
CHP0039411		121 S Main St	Urbana	Vernacular	1900	17	265398	4443100
CHP0039611	Ol' South Restaurant	15 Monument Sq	Urbana	Vernacular	1880	17	265426	4443162
CHP0039711	Mumfords Apartments	205 Scioto St	Urbana	Vernacular	1925	17	265543	4443152
CHP0039811	Tire Shop	138 E Court St	Urbana	Colonial Revival	1910	17	265528	4443323
CHP0039911		136-136 1/2 E Court St	Urbana	Vernacular	1880	17	265515	4443324
CHP0040011	Evans & Collins Optometrists	303 N Main St	Urbana	Vernacular	1920	17	265440	4443444
CHP0040111	Millner's Cafeteria	207 N Main St	Urbana	Vernacular	1910	17	265430	4443343
CHP0040211	Boston Store	121 N Main St	Urbana	Vernacular	1910	17	265419	4443268
CHP0040311	Bargain World	113 N Main St	Urbana	Vernacular	1890	17	265418	4443255
CHP0040411	Litton's Punch Whitman Shoes	107 N Main St	Urbana	Italianate	1880	17	265417	4443229
CHP0040511	Citizens National Bank	1 Monument Sq	Urbana	Colonial Revival	1929	17	265415	4443214
CHP0040711		566 Scioto St	Urbana	Vernacular	1925	17	266254	4443120
CHP0040811	Fred Banion House	559 Scioto St	Urbana	Colonial Revival	1930	17	266239	4443063
CHP0040911		540 Scioto St	Urbana	Vernacular	1925	17	266179	4443128
CHP0041011	Charles Havens House	555 Scioto St	Urbana	Dutch Colonial Revival	1925	17	266215	4443066
CHP0041111	Carl Roemer House	503 Scioto St	Urbana	Queen Anne	1895	17	266064	4443077
CHP0041211	Rex Ponn House	501 Scioto St	Urbana	Colonial Revival	1925	17	266042	4443079
CHP0041411	Charles Bowers House	460 Scioto St	Urbana	Colonial Revival	1910	17	265992	4443151
CHP0041511	Roy Doss House	451 Scioto St	Urbana	Colonial Revival	1920	17	265970	4443088
CHP0041611	Tery Miller House	409 Scioto St	Urbana	Vernacular	1890	17	265837	4443118
CHP0041711	Robert Thorpe House	403 Scioto St	Urbana	Queen Anne	1875	17	265821	4443119
CHP0041811	Frederick Seeburg House	316 Scioto St	Urbana	Vernacular	1890	17	265719	4443179
CHP0041911	Russell Daniels House	306 Scioto St	Urbana	Second Empire/Mansard	1895	17	265684	4443183
CHP0042011	Kathy Barr House	226 Scioto St	Urbana	Vernacular	1920	17	265610	4443194
CHP0042111		220 Scioto St	Urbana	Not Discernible from OHI Form	1920	17	265589	4443195
CHP0042211	Designers Cove Hair Salon	216 Scioto St	Urbana	Vernacular	1915	17	265578	4443195
CHP0042311		214 Scioto St	Urbana		1890	17	265568	4443196
CHP0042411	Union 76 Gas Station	208 Miami St	Urbana	Chateausque	1930	17	265232	4443230
CHP0042511	Old Chevrolet Dealer	325 N Main St	Urbana	Vernacular	1930	17	265448	4443520

OHI #	Present Name	Address	Place name	ArchStyle1	Date	Zone	Easting	Northing
CHP0042611	Anne Knowlton House	448 Scioto St	Urbana	Tudor/English Revival	1925	17	265954	4443154
CHP0042811	J Ward School	725 S Main St	Urbana	Second Renaissance Revival	1899	17	265325	4442238
CHP0042911	Roscoe W Cox House	219 Elbert St	Urbana	Queen Anne	1885	17	265333	4443955
CHP0043011	Jr High School	500 Washington Ave	Urbana	Late Gothic Revival	1900	17	266246	4443728
CHP0043111	North District School	626 Russell St	Urbana	Neo-Classical Revival	1901	17	265057	4443999
CHP0043211		220 Elbert St	Urbana	Italianate	1885	17	265366	4443988
CHP0043311	Vienna O Stout House	119 S High St	Urbana	Craftsman/Arts and Crafts	1920	17	265144	4443144
CHP0043411	Greg Stepp House	226 W Water St	Urbana	Italianate	1895	17	265137	4442995
CHP0043511	Dayton Power & Light	Dugan St at Railroad	Urbana	Vernacular	1870	17	265314	4443733
CHP0043611	Howard Paper Co Plant & Office	700 W Court St (at Union Aly)	Urbana	Colonial Revival	1910	17	264690	4443579
CHP0043711	WH Marvin Co Building	600 Miami St	Urbana	Colonial Revival	1915	17	264849	4443292
CHP0043811	Johnson Mfg Co	605 Miami St	Urbana	Vernacular	1902	17	264779	4443185
CHP0044011		500 Russell St	Urbana	Vernacular	1930	17	265050	4443791
CHP0044111		232 High St	Urbana	Colonial Revival	1910	17	265045	4443055
CHP0044211	Water Tower	btwn 573 & 617 E Lawn Ave	Urbana		1910	17	266473	4443833
CHP0044311	Pump Station	429 Storms Ave	Urbana	Vernacular	1878	17	264651	4442831
CHP0044411	Oakdale Cemetery Manager's House	319 Patrick Ave	Urbana	Second Empire/Mansard	1870	17	266964	4442443
CHP0044511	Methodist Church	238 N Main St	Urbana	Colonial Revival	1901	17	265374	4443410
CHP0044611	First Christian Chh of Urbana	119 Orange St	Urbana	Vernacular	1920	17	265364	4444064
CHP0044711	St Mary's School	229 Washington Ave	Urbana	Colonial Revival	1905	17	265613	4443621
CHP0044811	St Mary's Church Parsonage	231 Washington Ave	Urbana	Colonial Revival	1905	17	265657	4443619
CHP0044911	Sweden Borgian Church	334 S Main St	Urbana	Romanesque Revival	1882	17	265326	4442848
CHP0045011	Masonic Temple-Lodge #525	226 N Main St	Urbana	Colonial Revival	1900	17	265373	4443391
CHP0045111	IOOF Union Assoc of Men	107 Scioto St	Urbana	Romanesque Revival	1888	17	265441	4443167
CHP0045211		318 W Light St	Urbana	Vernacular	1885	17	265212	4444276
CHP0045311	Conrail	630 Miami St	Urbana	Romanesque Revival	1880	17	264758	4443289
CHP0045411	Watering Station	S of Dugan St on Railroad	Urbana	Vernacular	1870	17	265150	4443654
CHP0045511	Christina Entern	511 Miami St	Urbana	Vernacular	1926	17	264871	4443214
CHP0045611		330 Laurel Oak St	Urbana	Italianate	1890	17	265370	4443920
CHP0045711	John M Campbell House	336 Loudon St	Urbana	Vernacular	1890	17	265200	4443994
CHP0045811	Lester L Baldwin House	424 Loudon St	Urbana	Italianate	1895	17	265207	4444100
CHP0045911	Dr Aults Office	118 Scioto St	Urbana	Italianate	1900	17	265480	4443201

OHI #	Present Name	Address	Place name	ArchStyle1	Date	Zone	Easting	Northing
CHP0046011	Bamhart Storage	552 N Main St	Urbana	Vernacular	1840	17	265438	4443830
CHP0046111		116 E Reynolds St	Urbana	Vernacular	1830	17	265412	4442835
CHP0046211		130-132 E Ward St	Urbana	Vernacular	1890	17	265536	4443559
CHP0046311	Margaret Kitchen House	212 W Ward St	Urbana	Vernacular	1880	17	265248	4443587
CHP0046411		SEC E Water & Kenton (?)	Urbana	Bungalow	1925	17	265780	4442871
CHP0046511	Lloyd Bramer House	131 E Water St	Urbana	Second Empire/Mansard	1890	17	265466	4442911
CHP0046611	St Paul AME Church	316 E Market St	Urbana	Greek Revival	1866	17	265704	4443053
CHP0046711	Florencio Banavides House	402 E Water St	Urbana	Vernacular	1915	17	265804	4442920
CHP0047014	Laird's Tax Service	1-5 N Main St	Mechanicsburg	Italianate	1870	17	282002	4438663
CHP0047114	Masonic Temple	12 N Main St	Mechanicsburg	Jacobethian	1909	17	282021	4438712
CHP0047214	Village Hobby Shop	7 N Main St	Mechanicsburg	Italianate	1880	17	281994	4438672
CHP0047314	D Padamaden Offices	15 N Main St	Mechanicsburg	Greek Revival	1830	17	281983	4438692
CHP0047414		21 N Main St	Mechanicsburg	Italianate	1875	17	281976	4438702
CHP0047514		24 N Main St	Mechanicsburg	Colonial Revival	1880	17	281994	4438739
CHP0047614	IOOF Lodge	28 N Main St	Mechanicsburg	Queen Anne	1893	17	281986	4438748
CHP0047714		29-31 N Main St	Mechanicsburg	Queen Anne	1890	17	281954	4438728
CHP0047814		30-32 N Main St	Mechanicsburg	Vernacular	1870	17	281976	4438762
CHP0047914		33 N Main St	Mechanicsburg	Vernacular	1865	17	281942	4438741
CHP0048014		37 N Main St	Mechanicsburg	Colonial Revival	1900	17	281923	4438765
CHP0048114	United Methodist Church	50 N Main St	Mechanicsburg	High Victorian Gothic	1894	17	281939	4438808
CHP0048214		40 N Main St	Mechanicsburg	Queen Anne	1890	17	281954	4438792
CHP0048314		45 N Main St	Mechanicsburg	Vernacular	1875	17	281908	4438786
CHP0048414	John Robinson House	77 S Main St	Mechanicsburg	Vernacular	1880	17	282179	4438433
CHP0048514		109 N Main St	Mechanicsburg	Queen Anne	1885	17	281856	4438842
CHP0048614		110 N Main St	Mechanicsburg	Queen Anne	1880	17	281889	4438871
CHP0048714	Doerman House	115 N Main St	Mechanicsburg	Queen Anne	1897	17	281847	4438854
CHP0048814		117 N Main St	Mechanicsburg	Italianate	1880	17	281838	4438866
CHP0048914		122 N Main St	Mechanicsburg		1880	17	281865	4438900
CHP0049014		125 N Main St	Mechanicsburg	Vernacular	1850	17	281820	4438892
CHP0049114	Mennonite Church	127 N Main St	Mechanicsburg	Queen Anne	1880	17	281811	4438903
CHP0049214		135 N Main St	Mechanicsburg	Vernacular	1895	17	281802	4438916
CHP0049314		147 N Main St	Mechanicsburg	Vernacular	1880	17	281774	4438951

OHI #	Present Name	Address	Place name	ArchStyle1	Date	Zone	Easting	Northing
CHP0049414		145 N Main St	Mechanicsburg	Vernacular	1880	17	281784	4438940
CHP0049514		136 N Main St	Mechanicsburg	Colonial Revival	1920	17	281841	4438930
CHP0049714		202 W Main St	Mechanicsburg	Queen Anne	1880	17	281729	4439037
CHP0049813	Mechanicsburg Park	N of Main St on edge of town	Mechanicsburg		1870	17	281200	4439160
CHP0049914	Hatcher Hotel	1 S Main St	Mechanicsburg	Italianate	1874	17	282017	4438634
CHP0050014	Saxbe Offices	16 S Main St	Mechanicsburg	Italianate	1881	17	282077	4438636
CHP0050114	Margo's Beauty Salon	5 S Main St	Mechanicsburg	Italianate	1880	17	282022	4438629
CHP0050214	Don's Barber Shop	7 S Main St	Mechanicsburg	Italianate	1877	17	282027	4438623
CHP0050314	Anderson's Clothing Store	11 S Main St	Mechanicsburg	Italianate	1880	17	282032	4438617
CHP0050414	Home Savings Bank	15 S Main St	Mechanicsburg	Italianate	1885	17	282039	4438609
CHP0050514	Holland's Hardware N Section	277 S Main St	Mechanicsburg	Italianate	1880	17	282066	4438576
CHP0050614	Hollands Hardware	297 S Main St	Mechanicsburg	Italianate	1880	17	282073	4438568
CHP0050714	Custom Printing Hills Gifts	307 S Main St	Mechanicsburg	Vernacular	1937	17	282108	4438594
CHP0050814	Joseph E Wing Memorial Library	60 S Main St	Mechanicsburg	Colonial Revival	1940	17	282175	4438511
CHP0050914	Church of Our Savior	56 S Main St	Mechanicsburg	High Victorian Gothic	1893	17	282160	4438536
CHP0051014		88 S Main St	Mechanicsburg	Italianate	1890	17	282229	4438440
CHP0051114		59 S Main St	Mechanicsburg	Vernacular	1870	17	282143	4438474
CHP0051214	Ohio Grain Co Elevators	S Main at Railroad	Mechanicsburg	Vernacular	1900	17	282288	4438391
CHP0051314	Norval Hunter Farm	129 S Main St	Mechanicsburg	Italianate	1850	17	282232	4438160
CHP0051414		271 W Main St	Mechanicsburg	Queen Anne	1895	17	281502	4439001
CHP0051513	Civil Span-Amer & WWI Monument	Maple Grove Cemetery	Goshen (Township of)		1901	17	281158	4437373
CHP0051614		103 Race St	Mechanicsburg	Italianate	1875	17	282052	4438906
CHP0051714	Cain House	116 E Sandusky St	Mechanicsburg	Italianate	1878	17	282193	4438843
CHP0051814	Molly S Kennedy House	127 E Sandusky St	Mechanicsburg	Vernacular	1900	17	282258	4438822
CHP0051914	Mathews House	150 E Sandusky St	Mechanicsburg	Queen Anne	1900	17	282292	4438931
CHP0052014	2nd Baptist Church	abt 29 E Sandusky St	Mechanicsburg	Greek Revival	1858	17	282132	4438709
CHP0052114		159 E Sandusky St	Mechanicsburg	Vernacular	1880	17	282364	4438910
CHP0052214		201 E Sandusky St	Mechanicsburg	Italianate	1880	17	282459	4439011
CHP0052314		257 E Sandusky St	Mechanicsburg	Italianate	1885	17	282561	4439113
CHP0052414	Mechanicsburg Baptist Church	112 W Sandusky St	Mechanicsburg	Gothic Revival	1890	17	281878	4438576
CHP0052514	St Michael Cath Church	40 Walnut St	Mechanicsburg	Gothic Revival	1888	17	281835	4438703
CHP0052614		118 Walnut St	Mechanicsburg	Greek Revival	1835	17	281761	4438794

OHI #	Present Name	Address	Place name	ArchStyle1	Date	Zone	Easting	Northing
CHP0052714		abt 30 E Sandusky St	Mechanicsburg	Greek Revival	1835	17	282095	4438745
CHP0052814	African Meth Episcopal Church	49 Walnut St	Mechanicsburg	Vernacular	1881	17	281787	4438693
CHP0052914		19 Locust St	Mechanicsburg	Vernacular	1900	17	282080	4438801
CHP0053014		169 E Sandusky St	Mechanicsburg	Vernacular	1900	17	282399	4438949
CHP0053114		24 School St	Mechanicsburg	Vernacular	1900	17	281980	4438959
CHP0053214		26 School St	Mechanicsburg	Vernacular	1900	17	281969	4438973
CHP0053314		27 Willow St	Mechanicsburg	Vernacular	1900	17	282482	4438922
CHP0053414		56 Willow St	Mechanicsburg	Vernacular	1900	17	282560	4438901
CHP0053514		66 School St	Mechanicsburg	Vernacular	1900	17	281897	4439058
CHP0053710	John C Glessner 10 Sided Barn	4440 Prairie Rd	Mutual	Italianate	1897	17	268277	4436082
CHP0053814		49 High St	Mechanicsburg	Vernacular	1900	17	281880	4439079
CHP0053914		55 High St	Mechanicsburg	Vernacular	1910	17	281898	4439093
CHP0054014		70 High St	Mechanicsburg	Gothic Revival	1900	17	281911	4439151
CHP0054114		71 High St	Mechanicsburg	Vernacular	1900	17	281944	4439126
CHP0054214		84 High St	Mechanicsburg	Vernacular	1910	17	281946	4439176
CHP0054314		111 High St	Mechanicsburg	Gothic Revival	1900	17	282036	4439198
CHP0054414		119 High St	Mechanicsburg	Gothic Revival	1900	17	282050	4439210
CHP0054514		120 High St	Mechanicsburg	Gothic Revival	1890	17	282031	4439252
CHP0054614		130 High St	Mechanicsburg	Vernacular	1900	17	282053	4439269
CHP0054714		143 High St	Mechanicsburg	Gothic Revival	1880	17	282111	4439260
CHP0054814		168 High St	Mechanicsburg	Gothic Revival	1880	17	282140	4439340
CHP0054914		36 N Main St	Mechanicsburg	Vernacular	1890	17	281965	4438776
CHP0055014		149 N Main St	Mechanicsburg	Gothic Revival	1880	17	281764	4438964
CHP0055114		205 W Main St	Mechanicsburg	Gothic Revival	1880	17	281728	4438990
CHP0055214		223 W Main St	Mechanicsburg	Gothic Revival	1880	17	281669	4438987
CHP0055314	Dr Ream's Office	160 N Main St	Mechanicsburg	Vernacular	1880	17	281790	4439002
CHP0055414		278 W Main St	Mechanicsburg	Vernacular	1880	17	281481	4439042
CHP0055514		286 W Main St	Mechanicsburg	Vernacular	1880	17	281444	4439050
CHP0055614		345 W Main St	Mechanicsburg	Vernacular	1880	17	281258	4439016
CHP0055714		353 W Main St	Mechanicsburg	Vernacular	1800	17	281225	4439019
CHP0055814		352 W Main St	Mechanicsburg	Vernacular	1880	17	281236	4439065
CHP0055914		394 W Main St	Mechanicsburg	Vernacular	1880	17	281097	4439070

This foregoing document was electronically filed with the Public Utilities

Commission of Ohio Docketing Information System on

5/15/2012 4:43:20 PM

in

Case No(s). 12-0160-EL-BGN

Summary: Application of Champaign Wind LLC, Vol III, Part 1A electronically filed by Mr. Michael J. Settineri on behalf of Champaign Wind LLC