

Buckeye II Wind Project
 Goshen, Rush, Salem, Union, Urbana, and Wayne Townships
 Champaign County, Ohio
Visual Impact Assessment
Figure 21: Cumulative Viewshed Analysis
for the Buckeye I and II Projects

March 2012

Notes: 1. Base Map: Hillshade map derived from USGS Digital Elevation Model; ESRI StreetMap North America, 2008.
 2. Potential turbine visibility accounts for topography only.
 3. Analysis based on the blade tip height of 150 meters.

- Buckeye I Wind Turbine
 - Buckeye II Wind Turbine
 - Cumulative 5-Mile Study Area
- Potential Visibility
- 1-27 Turbines Visible
 - 28-54 Turbines Visible
 - 55-81 Turbines Visible
 - 82-108 Turbines Visible

everpower

edr
 COMPANIES

The results of the cumulative topographic viewshed analysis (based on blade-tip height) are depicted on Figure F2 and summarized in Table 4. The results of the cumulative viewshed analysis are essentially identical to the results of each individual project: the proposed Projects would be largely visible from approximately 94.8% of the combined 5-mile-radius study areas. Furthermore, the analysis indicates that more than 55 turbines (from the combined projects) could potentially be visible in 70.6% of the cumulative study area (i.e., the area within 5 miles of all turbines proposed as part of the Buckeye I and Buckeye II Projects).

Table 4. Cumulative Viewshed Analysis Results Summary

Blade Tip - Topo Only Viewshed	Cumulative 5-mile Radius Study Area ¹	
	Visible Area (Square Miles)	%
0 Visible	14.2	5.2
1-27 Turbines Visible	33.2	12.1
28-54 Turbines Visible	33.3	12.1
55-81 Turbines Visible	64.1	23.4
82-108 Turbines Visible	129.4	47.2

¹Cumulative five-mile radius study area is approximately 274.3 square miles in size.

Given the similarity of the results of the cumulative topographic blade-tip viewshed analysis to the comparable analyses for each individual project, it is reasonable to assume that the nacelle and vegetation viewsheds would result in comparable reduction of visibility (or lack thereof) for the combined projects. Overall, the cumulative viewshed prepared for the Buckeye I and II Projects (Figure 21; Table 4) indicates that the change in visibility resulting from the construction of both projects would be a change in degree (i.e., number of turbines visible) but not a change in kind (i.e., whether or not turbines would be visible from any particular vantage point).

Cumulative Visual Simulations

Simulations prepared for Viewpoints 41, 85, and 158 included views that show the combined effect of the two projects. These simulations were prepared using the same methods described in Section 4.2.2, except for that the Project model included all of the turbines proposed for both the Buckeye I and Buckeye II Projects. Additionally, to illustrate the full expanse of the Project that may be perceived from certain viewpoints, a panoramic simulation was created for Viewpoint 41. This image was created by stitching together two 50 mm photos to illustrate an approximately 60-degree field of view (see Figure 22). The cumulative simulations are described below:

Viewpoint 41 – Cumulative Simulation (Figure 22)*Cumulative Effect of Buckeye I and Buckeye II Projects*

Adding simulations of the proposed Buckeye I Project (edr, 2009) to the simulation of the Buckeye II Project allows for consideration of the cumulative effect of these two projects. This view was previously evaluated as Viewpoint 41 in the VIA prepared for the Buckeye I Project. To better illustrate the cumulative effect of both projects, two photographs from Viewpoint 41 were stitched together to create a panoramic view. With both projects in place, over 40 turbines are included in the panoramic view. The additional (Buckeye I) turbines are more prominent in the near mid-ground of the view, and the turbines extend across the horizon. The effect of adding the Buckeye I Project to the view results in a greater sense of visual clutter and increases the overall contrast, owing primarily to the number of visible turbines, proximity of the turbines to the viewer, and their spacing across the entire field of view. Although, the cluttering effect of the turbines remains somewhat offset by the existing utility poles and other man-made structures/objects in the view, the turbines now clearly dominate the view.

**Buckeye II
Wind Project**

Goshen, Salem,
Rush, Union, Urbana,
and Wayne Townships
Champaign County,
Ohio

**Visual Impact
Assessment**

Figure 22:
Existing View
U.S. Highway 36

March 2012



Viewpoint 41:
Cumulative Effect of
Buckeye I & II Wind Farm
Projects.

View west-northwest
from U.S. Highway 36
in the Town of Urbana,
Champaign County, Ohio

everpower

Sheet 1 of 2



**Buckeye II
Wind Project**

Goshen, Salem,
Rush, Union, Urbana,
and Wayne Townships
Champaign County,
Ohio

**Visual Impact
Assessment**

Figure 22:
Visual Simulation
U.S. Highway 36

March 2012



Viewpoint 41:
Cumulative Effect of
Buckeye I & II Wind Farm
Projects.

View west-northwest
from U.S. Highway 36
in the Town of Urbana,
Champaign County, Ohio

everpower

Sheet 2 of 2



Viewpoint 85 – Cumulative Simulation (Figure 23)*Cumulative Effect of Buckeye I and Buckeye II Projects*

Adding a simulation of the proposed Buckeye I Project (edr, 2009) to the simulation of the Buckeye II Project allows for consideration of the cumulative effect of these two projects. With both projects in place, portions of at least 30 turbines are visible extending from the near mid-ground to the background. The additional (Buckeye I) turbines are closer and more prominent, resulting in greater scale contrast. The overall effect on this view is appreciable, owing primarily to the greater scale contrast presented by the foreground turbines and the cluttering effect resulting from the greater number of turbines in the view. Similar to Viewpoint 41, the cluttering effect of the turbines is lessened somewhat by the existing utility poles and other man-made structures/objects in the view.



Buckeye II Wind Project

Goshen, Salem,
Rush, Union, Urbana,
and Wayne Townships
Champaign County,
Ohio

Visual Impact Assessment

Figure 23:
Visual Simulation
S. Kennard-
Kingscreek Road/

March 2012

Viewpoint 85:
Cumulative Effect of
Buckeye I & II Wind Farm
Projects.

View southeast from
Kennard-Kingscreek
Road/County Highway
10 in the Town of Salem,
Champaign County, Ohio

everpower

Sheet 1 of 1

Viewpoint 158 – Cumulative Simulation (Figure 24)*Cumulative Effect of Buckeye I and Buckeye II Projects*

Adding a simulation of the proposed Buckeye I Project (edr, 2009) to the simulation of the Buckeye II Project allows for consideration of the cumulative effect of these two projects. With both projects in place, portions of 18 turbines are visible extending from the near mid-ground to the background. The additional (Buckeye I) turbines are intermixed amongst the Buckeye II turbines in the distant mid-ground and background. Although the view features more turbines, the spacing and variable distances of the turbines retain a sense of openness and do not result in a substantially greater sense of clutter than the view that features on Buckeye II turbines. Because of their greater distance from the viewer the additional turbines do not noticeably increase line or scale contrast presented by the Buckeye II turbines. The overall effect on the view is not significantly changed with the addition of the Buckeye I turbines.



Buckeye II Wind Project

Goshen, Salem,
Rush, Union, Urbana,
and Wayne Townships
Champaign County,
Ohio

Visual Impact Assessment

Figure 24:
Visual Simulation
State Route 161

March 2012

Viewpoint 158:
Cumulative Effect of
Buckeye I & II Wind Farm
Projects.

View north-northwest
from State Route 161
in the Town of Goshen,
Champaign County,
Ohio.

everpower

Sheet 1 of 1

edr
COMPANIES
www.edrcompanies.com

The cumulative simulations were evaluated by an **edr** landscape architect in accordance with the methods outlined in Section 4.2.3. Contrast ratings for the viewpoints for which a cumulative simulation (i.e., showing both the Buckeye I and II projects) are summarized in Table 5.

Table 5. Cumulative Visual Simulations Contrast Rating Summary

Viewpoint Number	Nearest Turbine	Scenic Quality	Contrast Rating ¹					
			Landform	Vegetation	Land Use	Sky	Viewer Activity	Average
41 (Buckeye II only)	2.9 mi	Low to Medium	2.5	2.5	1.5	3	3	2.50
41C (cumulative)	1.0 mi	Low to Medium	3.5	3.5	3	3.5	3.5	3.40
85 (Buckeye II only)	2.9 mi	Low to Medium	0.5	0.5	0.5	1.0	0.5	0.60
85C (cumulative)	0.6 mi	Low to Medium	3.5	4	3	3	2.5	3.20
158 (Buckeye II only)	0.9 mi	Medium	3	4	3	3	2.5	3.10
158C (cumulative)	0.9 mi	Medium	3	4	3	3	2.5	3.10

¹ Contrast ratings scale: 0 (insignificant), 1 (minimal), 2 (moderate), 3 (appreciable), and 4 (strong).

Adding the Buckeye I turbines to Viewpoints 41 and 85 places turbines in the near mid-ground of each view and significantly increases the number of turbines in the view, resulting in greater scale and line contrast and in a greater sense of visual clutter. It is worth noting that the cumulative simulation for Viewpoint 41 was also a panoramic image, which increases the field of view, and number of turbines in the view, and is therefore not directly comparable to the other simulations. Regardless, the cumulative effect of the two projects in these two views is greater than the visual impact of only the Buckeye II Project by itself. From Viewpoint 158, the effect of adding the Buckeye I Project to the view does not change or increase the visual contrast resulting from the Buckeye II Project by itself, due primarily to the distance of both projects from the viewer. Consequently, the cumulative visual impact of both projects on this view is not considered significantly different than the effect of just the Buckeye II Project.

As noted previously for the simulations that depict only the Buckeye II Project, the viewpoints with near mid-ground views of both projects (i.e., between approximately 0.5 and 1.0-mile) received appreciable to strong contrast ratings. These included the cumulative simulations from Viewpoints 41, 85, and 158 that show both the Buckeye I and II Projects. For the most part the overall contrast in these views derived from scale and line contrast due to the proximity of the turbines. However, for the cumulative views from Viewpoint 41 and 85, visual impact was associated with primarily the number of visible turbines and their extent across the field of view, which resulted in a sense of

clutter. It is worth noting that for Viewpoint 158 the overall contrast rating did not change between the simulation showing only the Buckeye I project and the cumulative simulation showing both the Buckeye I and II projects. Even though the number of turbines shown in these views more than doubled (from seven to 18), the sense of openness created by the agricultural field in this view is able to absorb the vertical lines of the turbines. In this instance the greater number of turbines in the view did not result in an increased sense of clutter.

In general, the cumulative effects of both projects result in similar levels of contrast and visual impact as either project by itself: the greatest impact typically occurs when numerous turbines are visible and/or where the turbines are close to the viewer. In the opinion of **edr**, the cumulative effect of constructing both projects is negligible relative to the effect of introducing either project as a visual component of the landscape.

6.0 Conclusions

The VIA for the Buckeye Wind Power Project allows the following conclusions to be drawn:

1. Viewshed mapping and field verification indicate that the Project has the potential to be visible from the majority of the 5-mile radius study area. In most locations where turbines will be visible, significant portions of the overall Project are also likely to be visible. However, field review indicates that in many areas a significant number of the turbines will be at least partially screened by trees and structures. In addition, significant visual effects of wind power projects are generally concentrated within 3.5 miles (6 kilometers) of the Project site (Eyre, 1995). **edr's** observations on existing wind power projects in New York State indicate that under favorable conditions, views of the wind turbines will likely be available from certain viewpoints well over 10 miles from the Project site. However, visual impact at these distances is typically minimal.
2. Viewshed analysis indicates that views of the Project are likely to be available from the majority of the visually sensitive resources and areas of intensive land use that occur within the 5-mile radius study area. However, for many sensitive sites within the study area, including National Register-listed historic sites and others that occur in the City of Urbana and the various villages, field review suggest that the Project will either not be visible or will be significantly screened by foreground vegetation and structures. As a result, construction of the Project is not expected to result in a significant adverse impact on the visual settings associated with historic properties.
3. Simulations of the proposed Project, indicate that the visibility and visual impact of the wind turbines will be highly variable, based on landscape setting, the extent of natural screening, the presence of other man-made features in the view, and distance of the viewer from the Project.
4. Evaluation by a licensed **edr** landscape architect indicates that the Project's overall contrast with the visual/aesthetic character of the area will range from minimal to strong. Minimal to moderate contrast was noted for viewpoints located more than 2.0 miles from the Project, particularly where existing vertical elements (such as utility poles) in the foreground or mid-ground reduces the turbines, line and scale contrast with the landscape. More appreciable contrast was noted where foreground and near mid-ground views of turbines (i.e., under 1.0 mile) are available. At these distances the Project's strong scale and line contrast with existing landscape features was noted. However, in most cases the Project appears compatible with the working agricultural landscape that makes up the majority of the visual study area. Based on experience with currently operating wind power projects elsewhere, public reaction to the Project is likely to be generally positive, but highly variable

based on proximity to the turbines, the affected landscape, and personal attitude of the viewer regarding wind power. As Stanton (1996) notes, although a wind power project is a man-made facility, what it represents "may be seen as a positive addition" to the landscape.

5. Based upon the nighttime photos/observations of existing wind power projects, the red flashing lights on the turbines could result in a nighttime visual impact on certain viewers. The actual significance of this impact from a given viewpoint will depend on how many lighted turbines are visible, what other sources of lighting are present in the view, the extent of screening provided by structures and trees, and nighttime viewer activity/sensitivity. However, night lighting could be somewhat distracting and have an adverse effect on rural residents that currently experience dark nighttime skies. It should be noted that nighttime visibility/visual impact will be reduced on this Project due to 1) FAA lighting guidelines which typically result in aviation warning lights on only about one third to one half the turbines, 2) the presence of yard trees and hedgerows that screen portions of the Project from many locations, 3) the presence of existing communication towers, grain elevators, and water towers equipped with FAA warning lights, and 4) the concentration of residences in villages, hamlets, and along highways where existing lights already compromise dark skies and compete for viewer attention.
6. Mitigation options are limited, given the nature of the Project and its siting criteria (tall structures typically located in open fields). However, various mitigation measures were considered. These included the following:
 - A. Screening. Due to the height of individual turbines and the geographic extent of the proposed Project, screening of individual turbines with earthen berms, fences, or planted vegetation will generally not be effective in reducing Project visibility or visual impact. However, if adequate natural screening is lacking at the proposed substation site, a planting plan should be developed and implemented to minimize the visibility of this facility.
 - B. Relocation. Again, because of the extent of the Project, the number of individual turbines, and the variety of viewpoints from which the Project can be seen, turbine relocation will generally not significantly alter visual impact. Where visible from sensitive resources within the study area, (e.g., local parks, cemeteries, and heavily used roadways) numerous turbines are likely to be visible, and relocation of individual machines would have little effect on overall visual impact. Throughout the study area, views of the Project are highly variable and include different turbines at different vantage points. Therefore, turbine relocation would generally not be effective in mitigating visual impacts.

-
- C. **Camouflage.** The white color of wind turbines (as mandated by the FAA to eliminate the need for day time lighting) minimizes contrast with the sky under most conditions, especially when viewed at distance against the horizon. Consequently it is recommended that this color be utilized on the Buckeye II Project. The size and movement of the turbines prevents more extensive camouflage from being a viable mitigation alternative (i.e., they cannot be made to look like anything else). Neilson (1996) notes that efforts to camouflage or hide wind farms generally fail, while Stanton (1996) feels that such efforts are inappropriate. She believes that wind turbine siting "is about honestly portraying a form in direct relation to its function and our culture; by compromising this relationship, a negative image of attempted camouflage can occur."
- D. **Low Profile.** A significant reduction in turbine height is not possible without significantly decreasing power generation. To off-set this decrease, additional turbines would be necessary. There is not adequate land under lease to accommodate a significant number of additional turbines, and a higher number of shorter turbines would not necessarily decrease Project visual impact. In fact, several studies have concluded that people tend to prefer fewer larger turbines to a greater number of smaller ones (Thayer and Freeman, 1987; van de Wardt and Staats, 1988). **edr** has evaluated this alternative on several proposed wind power projects in New York, and we have typically found that visual impact is not significantly altered by using a larger number of smaller turbines. The visual impact of the electrical collection system is being minimized by installing significant portions of the lines underground.
- E. **Nonspecular Materials.** Where possible, non-reflective paints and finishes will be used on the wind turbines to minimize reflected glare. Where this is not feasible, natural weathering/dulling of any glossy surfaces (on turbine or substation components) will typically occur within one year following installation.
- F. **Lighting.** Turbine lighting will be kept to the minimum allowable by the FAA. Medium intensity red strobes will be used at night, rather than white strobes or steady burning red lights. Lighting at the proposed substation should be kept to a minimum, and turned on only as needed by switch or motion detector.
- G. **Maintenance.** The turbines and turbine sites will be maintained to ensure that they are clean, attractive, and operating efficiently. Research and anecdotal reports indicate that viewers find wind turbines more appealing when the rotors are turning (Stanton, 1996, Pasqualetti et al., 2002). In addition, the Project operator will establish a decommissioning fund to ensure that if the Project goes out of service and is not repowered/redeveloped, all visible above-ground components will be removed.

- H. **Offsets.** Correction of an existing aesthetic problem within the viewshed is a viable mitigation strategy for wind power projects that result in significant adverse visual impact. Given the results of this study, off-sets such as removal of existing blighted/derelict structures or restoration and maintenance of neglected cultural resources might be appropriate.

In addition to the mitigation measures described above, other measures that will reduce or mitigate visual impact have been incorporated into the Project design. These include the following:

- All turbines will have uniform design, speed, color, height and rotor diameter.
- The white color of the turbines generally blends well with the sky and horizon, and eliminates the need for daytime FAA warning lights.
- 41.6 miles (88.5%) of the projects electrical collection system will be placed underground.
- The Project operations and maintenance building (although not yet designed) will reflect the vernacular architecture of the area (i.e., resemble an agricultural structure).
- New road construction will be minimized by utilizing existing farm lanes whenever possible.
- The placement of any advertising devices on the turbines will be prohibited.

7.0 Literature Cited/References

Bishop and Proctor. 1994. *Love Them or Loathe Them? Public Attitude Towards Wind Farms in Wales*. Cardiff, Wales.

Brookdale Senior Living. 2011. *Sterling House of Urbana*. Available at: <http://www.brookdaleliving.com/sterling-house-of-urbana.aspx> (Accessed August 3, 2011).

Buckeye Trail Association. 2008. *Buckeye Trail Overview Map*. Available at: <http://www.buckeyetrail.org/map-n-sections.html> (Accessed August 3, 2011).

Catholic Health Partners. 2011. *Community Mercy Health Partners: Mercy Memorial Hospital*. Available at: http://www.community-mercy.org/mercy_memorial_hospital.asp (Accessed August 3, 2011).

Catholic Health Partners. 2011. *Community Mercy Health Partners: Mercy McAuley Center*. Available at: http://www.community-mercy.org/mcauley_main.asp (Accessed August 3, 2011).

Champaign County Government. 2006. *Champaign County Law Library*. Available at: <http://www.co.champaign.il.us/LawLibrary/welcome.htm> (Accessed August 3, 2011).

The Champaign County Historical Museum. 2011. *The Champaign County Historical Museum Urbana, Ohio*. Available at: <http://www.ctcn.net/~champhistmus/index.html> (Accessed August 3, 2011).

Champaign County Library. 2011. *Welcome to the Champaign County Library*. Available at: <http://www.champaign.lib.oh.us/> (Accessed August 3, 2011).

Champaign County, Ohio. 2011. *Champaign County, Ohio*. Available at: <http://www.co.champaign.oh.us/> (Accessed August 3, 2011).

City of Urbana. 2011a. *City of Urbana, Parks and Recreation*. Available at: <http://www.urbanaohio.com/city-offices/parks-and-recreation.html> (Accessed August 3, 2011).

City of Urbana. 2011b. *Welcome! City of Urbana, Ohio*. Available at: <http://www.urbanaohio.org/> (Accessed August 3, 2011).

Committee on Environmental Impacts of Wind Energy Projects (CEIWEP). 2007. Appendix D: A Visual Impact Assessment Process for Evaluating Wind-Energy Projects. In, *Environmental Impacts of Wind Energy Projects*, pp. 349-376. National Research Council, The National Academies Press, Washington, D.C.

edr Companies. 2009. *Visual Impact Assessment, Buckeye Wind Project, Champaign County, Ohio*. Prepared for Everpower Wind Holdings, Inc., New York, NY. Environmental Design & Research, Syracuse, NY.

Enviros Consulting, Ltd. 2005. *Guidance on the Assessment of the Impact of Offshore Wind Farms: Seascape and Visual Impact Report*. Prepared for the UK Department of Trade and Industry.

Eyre, N.J. 1995. European Commission, DGXII, Science, Research and Development, JOULE, *Externalities of Energy, "Extern E" Project*. Volume 6. Wind and Hydro, Part I, Wind, pp1-121, Report No. EUR 16525.

Federal Aviation Administration (FAA). 2005. *Development of Obstruction Lighting Standards for Wind Turbine Farms*. DOT/FAA/AR-TN 05/50. U.S. Department of Transportation, Washington, D.C.

Grace Baptist Church. 2011. *Grace Baptist Church*. Available at: <http://choosegrace.net/> (Accessed August 3, 2011).

Grimes Field Urbana Municipal Airport. 2011. *Grimes Field Urbana Municipal Airport*. Available at: <http://www.grimesfield.com/> (Accessed August 3, 2011).

HCR ManorCare. 2011. *Heartland of Urbana*. Available at: <http://www.hcr-manorcare.com/heartlandnursing/Urbana> (Accessed August 3, 2011).

Horner & MacLennan and Evison. 2006. *Visual Representation of Windfarms – Good Practice Guidance*. Prepared for Scottish Natural Heritage, The Scottish Renewables Forum and the Scottish Society of Directors of Planning. Report F03AA308/2.

Indian Springs Golf Club. 2011. *Indian Springs Golf Club*. Available at: <http://www.golfindiansprings.com/> (Accessed August 3, 2011).

Jefferson County Community College, Center for Community Studies. 2008. *Presentation of Results: Second Annual Lewis County Survey of the Community December 2008*. Available at: <http://www.sunyjefferson.edu/ccs/index.html> (Accessed April 13, 2009).

Mechanicsburg Exempted Village School District. 2011. *Welcome to Mechanicsburg Exempted Village School District*. Available at: <http://www.mechanicsburg.k12.oh.us/> (Accessed August 3, 2011).

Mechanicsburg Public Library. 2011. *Mechanicsburg Public Library Web Site*. Available at: <http://opac.mechanicsburg.lib.oh.us/> (Accessed August 3, 2011).

National Park Service (NPS). 2008. *Harpers Ferry Center National Trails System Map & Guide*. Available at: <http://www.nps.gov/hfc/carto/nps-trails.htm#> (Accessed August 3, 2011).

NPS. 2011a. *Find a Park in Ohio*. Available at: <http://www.nps.gov/state/oh/> (Accessed August 3, 2011).

NPS. 2011b. *National Natural Landmarks in Ohio*. Available at: <http://www.nature.nps.gov/nnl/state.cfm?State=OH> (Accessed August 3, 2011).

NPS. 2011c. *National Register of Historic Places*. Available at: <http://www.nps.gov/nr/> (Accessed August 3, 2011).

NPS. 2011d. *Ohio Segments Rivers and Trails*. Available at: <http://www.nps.gov/ncrc/programs/rtca/nri/states/oh.html> (Accessed August 3, 2011).

National Recreation Trail. 2008. *National Recreation Trails Database*. Available at: <http://tutsan.forest.net/trails/> (Accessed August 3, 2011).

National Register of Historic Places. 2011. *National Register of Historic Places – Ohio*. Available at: <http://www.nationalregisterofhistoricplaces.com/oh/state.html#pickem> (Accessed August 3, 2011).

National Scenic Byways Program. 2011. *Ohio Byways*. Available at: <http://www.byways.org/explore/states/OH/> (Accessed August 3, 2011).

National Wild & Scenic Rivers. 2011. *Designated Wild & Scenic Rivers*. Available at: <http://www.rivers.gov/wildriverslist.html> (Accessed August 3, 2011).

The Nature Conservancy (TNC). 2011. *The Nature Conservancy in Ohio*. Available at: <http://www.nature.org/wherewework/northamerica/states/ohio/> (Accessed August 3, 2011).

New York State Department of Environmental Conservation (NYSDEC). Not Dated. *D.E.C. Aesthetics Handbook*. NYSDEC. Albany, NY.

NYSDEC. 2000. *Program Policy: Assessing and Mitigating Visual Impacts*. DEP-00-2. Division of Environmental Permits, Albany, NY.

North Country Trail Association. 2011. *Get Maps!*. Available at: <http://northcountrytrail.org/trail/get-maps/> (Accessed August 3, 2011)

Northridge Local School District. 2011. *Northridge Local School District*. Available at: <http://northridge.k12.oh.us/> (Accessed August 3, 2011).

Northeastern Local School District. 2011a. *Northeastern Local School District*. Available at: <http://www.northeastern.k12.oh.us/> (Accessed August 3, 2011).

Northeastern Local School District. 2011b. *Rolling Hills Elementary School*. Available at: <http://www.northeastern.k12.oh.us/rh/> (Accessed August 3, 2011).

Ohio Department of Natural Resources (ODNR). 2011a. *Cedar Bog State Nature Preserve*. Available at: http://www.dnr.state.oh.us/location/dnap/cedar_bog/tabid/881/Default.aspx (Accessed August 3, 2011).

ODNR. 2011b. *Find an Ohio State Park*. Available at: <http://www.dnr.state.oh.us/parks/parks/locatormap/tabid/726/Default.aspx> (Accessed August 3, 2011).

ODNR. 2011c. *ODNR Division of Forestry Map of Ohio State Forests*. Available at: <http://www.dnr.state.oh.us/tabid/5158/Default.aspx> (Accessed August 3, 2011).

ODNR. 2011d. *ODNR Division of Natural Areas*. Available at: <http://www.ohiodnr.com/default/tabid/842/Default.aspx> (Accessed August 3, 2011).

ODNR. 2011e. *ODNR Division of Natural Areas and Preserves – Map of Ohio Preserves*. Available at: <http://www.ohiodnr.com/mapofpreserves/tabid/860/Default.aspx> (Accessed August 3, 2011).

ODNR. 2011f. *ODNR Division of Natural Areas and Preserves – Scenic Rivers*. Available at: http://www.ohiodnr.com/scenic_rivers_main/tabid/985/Default.aspx (Accessed August 3, 2011).

ODNR. 2011g. *ODNR Division of Watercraft – Where to Boat*. Available at: <http://www.dnr.state.oh.us/watercraft/watertrails/default/tabid/2897/Default.aspx> (Accessed August 3, 2011).

ODNR. 2011h. *ODNR Division of Wildlife*. Available at: <http://www.dnr.state.oh.us/wildlife/tabid/4414/Default.aspx> (Accessed August 3, 2011).

ODNR. 2011i. *ODNR Division of Wildlife – Wildlife Area Maps*. Available at: http://www.dnr.state.oh.us/Home/wild_resourcessubhomepage/WildlifeAreaMapsRepository/tabid/10579/Default.aspx (Accessed August 3, 2011).

ODNR. 2011j. *ODNR Ohio State Parks*. Available at: <http://www.dnr.state.oh.us/Default.aspx?alias=www.dnr.state.oh.us/parks> (Accessed August 3, 2011).

ODNR. 2011k. *ODNR Trails*. Available at: <http://www.dnr.state.oh.us/default/tabid/11915/Default.aspx> (Accessed August 3, 2011).

ODNR. 2011l. *ODNR Winter Trails*. Available at: <http://www.dnr.state.oh.us/Home/trails/wintertrails/tabid/11916/Default.aspx> (Accessed August 3, 2011).

ODNR. 2011m. *Welcome to the ODNR Division of Forestry*. Available at: <http://www.dnr.state.oh.us/Default.aspx?alias=www.dnr.state.oh.us/forestry> (Accessed August 3, 2011).

Ohio Department of Transportation (ODOT). 2011a. *Ohio Byways*. Available at: <http://www.dot.state.oh.us/OhioByways/Pages/default.aspx> (Accessed August 3, 2011).

ODOT. 2011b. *Welcome to the Ohio Department of Transportation*. Available at: <http://www.dot.state.oh.us/Pages/Home.aspx> (Accessed August 3, 2011).

Ohio Historical Society. 2011a. *Cedar Bog*. Available at: <http://ohsweb.ohiohistory.org/places/nw02/> (Accessed August 3, 2011).

Ohio Historical Society. 2011b. *Ohio Historic Preservation Office*. Available at: <http://www.ohiohistory.org/resource/histpres/> (Accessed August 3, 2011).

Ohio Historical Society. 2011c. *Ohio Historical Markers*. Available at: <http://www.remarkableohio.org/> (Accessed August 3, 2011).

Ohio Historical Society. 2011d. *Welcome to the Ohio Historical Society*. Available at: <http://www.ohiohistory.org/NoFlash.html> (Accessed August 3, 2011).

Ohio Office of Information Technology. 2011. *Ohio Geographically Referenced Information Program (OGRIP)*. Available at: <http://ogrip.oit.ohio.gov/> (Accessed August 3, 2011).

Smarden, R.C., J.F. Palmer, A. Knopf, K. Grinde, J.E. Henderson and L.D. Peyman-Dove. 1988. *Visual Resources Assessment Procedure for U.S. Army Corps of Engineers*. Instruction Report EL-88-1. Department of the Army, U.S. Army Corps of Engineers. Washington, D.C.

Spring Meadows Care Center. 2011. *Spring Meadows*. Available at: <http://www.springmeadowscare.com/> (Accessed August 3, 2011).

Stanton, C. 1996. *The Landscape Impact and Visual Design of Windfarms*. ISBN 1-901278-00X. Edinburgh College of Art, Heriot-Watt University. Edinburgh, Scotland.

Thayer, R.L. and C.M. Freeman. 1987. *Altamont: Public Perception of a Wind Energy Landscape*. Landscape and Urban Planning. 14: pp. 379-398.

-
- Triad Local School District. 2011. *Triad Local Schools*. Available at: <http://www.triad.k12.oh.us/> (Accessed August 3, 2011).
- United States Department of Agriculture (USDA), National Forest Service. 1974. *National Forest Landscape Management*. Agricultural Handbook No. 462. Washington, D.C.
- United States Department of the Interior (USDol), Bureau of Land Management. 1980. Visual Resource Management Program. U.S. Government Printing office. 1980. 0-302-993. Washington, D.C.
- United States Department of Transportation (USDOT), Federal Highway Administration. 1981. *Visual Impact Assessment for Highway Projects*. Office of Environmental Policy. Washington, D.C.
- United States Fish and Wildlife Service (USFWS). 2011. *Ohio National Wildlife Refuges*. Available at: <http://www.fws.gov/refuges/refugeLocatorMaps/Ohio.html> (Accessed August 3, 2011).
- University of Newcastle. 2002. *Visualization of Wind Farms: Best Practice*. Scottish Natural Heritage Commissioned Report F01AA33A.
- Urbana Country Club. 2011. *Urbana Country Club*. Available at: <http://www.urbanacc.com/> (Accessed August 3, 2011).
- Urbana City Schools. 2011. *Urbana City Schools*. Available at: <http://www.urban.k12.oh.us/> (Accessed August 3, 2011).
- Urbana Hearth and Home. 2011. *Urbana Hearth and Home*. Available at: <http://www.hearthandhomeassistedliving.com/Urbana/> (Accessed August 3, 2011).
- Urbana University. 2010. *Swedenborg Memorial Library*. Available at: http://www.urban.edu/index.php/current_students/library/ (Accessed August 3, 2011).
- Urbana University. 2011. *Urbana University*. Available at: www.urban.edu (Accessed August 3, 2011).
- Van de Wardt, J.W. and H. Staats. 1998. *Landscapes with wind turbines: environmental psychological research on the consequences of wind energy on scenic beauty*. Research Center ROV Leiden University.
- Village of Mechanicsburg. 2011a. *Parks and Recreation*. Available at: <http://www.mechanicsburgoh.com/parksrecreation.htm> (Accessed August 3, 2011).
- Village of Mechanicsburg. 2011b. *Village of Mechanicsburg, Ohio*. Available at: <http://mechanicsburgoh.com/> (Accessed August 3, 2011).
- Village of North Lewisburg. 2011a. *Local Churches*. Available at: <http://www.nlewisburg.com/churches.htm> (Accessed August 3, 2011).
- Village of North Lewisburg. 2011b. *The Village of North Lewisburg, Ohio*. Available at: <http://www.nlewisburg.com/> (Accessed August 3, 2011).
- Warren, C.R., C Lumsden, S. O'Dowd, and R.V. Birnie. 2005. 'Green On Green': *Public Perceptions of Wind Power in Scotland and Ireland*. *Journal of Environmental Planning and Management*. Vol. 48, No. 6, pp 853-875.

West Liberty-Salem Local Schools. 2011. *West Liberty-Salem Local Schools Welcome*. Available at: <http://www.wls.k12.oh.us/default.aspx> (Accessed August 3, 2011).

Woodland Golf Club. 2011. *Welcome to Woodland Golf Club*. Available at: <http://www.golfwoodland.com/> (Accessed August 3, 2011).

Appendix A

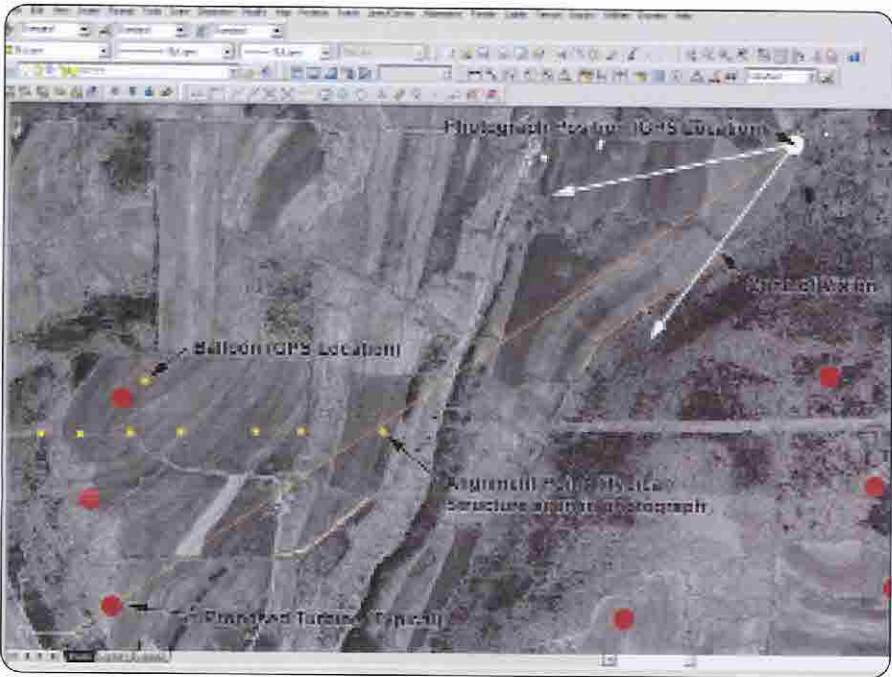
Visual Simulation Process



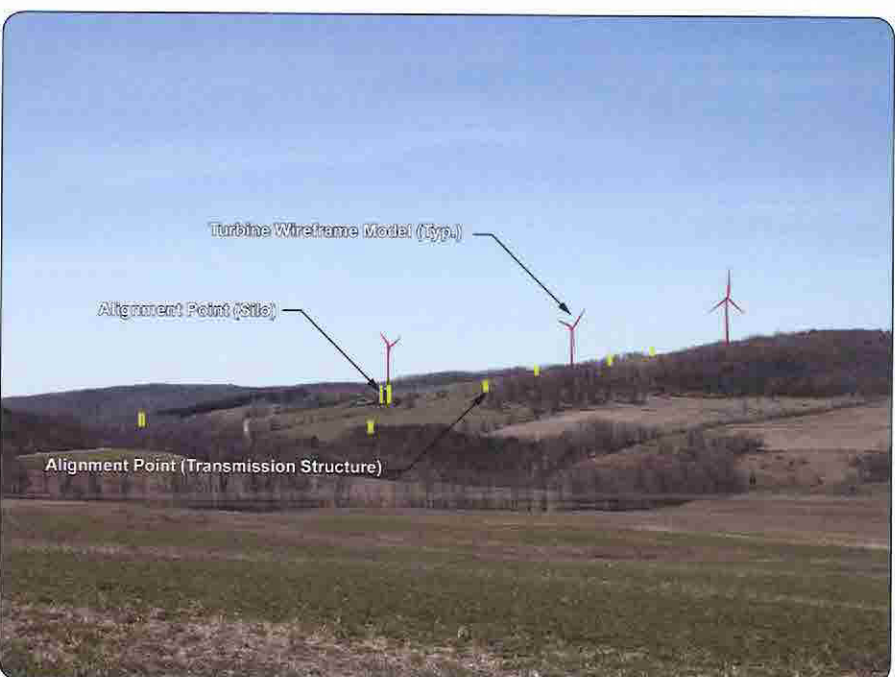
Photos are selected to illustrate typical views of the proposed project that will be available to representative viewer/user groups from the major landscape similarity zones and sensitive sites within the study area.



A three-dimensional computer model of the project is built based on proposed turbine specifications and tower site coordinates.



Aerial photographs and GPS data collected in the field are used to create an AutoCAD Civil 3D 2011® drawing.



These data are superimposed over photographs from each of the viewpoints, and minor camera changes are made to align all known reference points within the view.



A digital terrain model representing the existing topography is also overlayed on the existing photograph to refine camera alignment, and target elevation.



The proposed exterior color/finish of the turbines was then added to the model and the appropriate sun angle is simulated based on the specific date, time and location (latitude and longitude) at which each photo was taken.

Appendix B

Large Scale Vegetative Viewshed Maps
and Visually Sensitive Site Table

Buckeye II Wind Project

Goshen, Salem, Rush, Union,
Urbana, and Wayne Townships -
Champaign County, Ohio

Appendix B: Large Scale Vegetation Viewshed Map

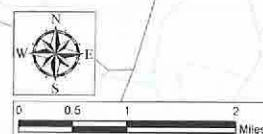
March 2012

- Wind Turbine
- Simulated Viewpoint
- October 2011 Viewpoint
- January 2008 Viewpoint
- Airport
- Cemetery
- Place of Worship
- Hospital
- Library
- Nursing Home
- School
- NRHP-Eligible Site
- NRHP-Listed Site
- National Natural Landmark
- State Park
- State Wildlife Area
- Golf Course
- Local Park
- Nature Preserve
- College
- 5-Mile Study Area
- Potential Visibility
- 1-14 Turbines Visible
- 15-28 Turbines Visible
- 29-42 Turbines Visible
- 43-56 Turbines Visible

Notes:
1. Base Map: ESRI StreetMap North America, 2008
2. Potential turbine visibility accounts for topography and potential screening by mapped forest vegetation (with an assumed height of 46 ft)
3. Analysis based on the maximum blade tip height of 150 meters

everpower

edr
COMPANIES
www.edrcompanies.com



Visually Sensitive Resource	Location	VP Number ¹	Distance ² Miles from Nearest Turbine	Distance Zone ● Foreground ● Midground ● Background	Project Visibility			Landscape Similarity Zone							
					+ Visible	- Not Visible	+/- Partially Visible	Topographic Viewshed	Topographic & Vegetation Viewshed	Field Review	Rural Res./Ag.	City/Village	Suburban Res.	Hamlet	
Properties listed on or eligible for inclusion in the National or State Register of Historic Places															
Culbertson, William, House	103 Race St., Village of Mechanicsburg, Champaign County	125, 126	1.1	●	+	+	+/-			✓					
Burnham, Henry, House	N. Main St. & Rt. 559, Village of Mechanicsburg, Champaign County	125, 126	1.1	●	+	+	+/-			✓					
Baker, Maj. John C., House	202 W. Main St., Village of Mechanicsburg, Champaign County	125, 126	1.1	●	+	+	+/-			✓					
United Methodist Church	N. Main & Race Sts., Village of Mechanicsburg, Champaign County	125, 126	1.2	●	+	+	+/-			✓					
Barr House	Locust & Sandusky Sts., Village of Mechanicsburg, Champaign County	125, 126	1.2	●	+	+	+/-			✓					
Ninchelser, Dr., House	28 N. Main St., Village of Mechanicsburg, Champaign County	125, 126	1.2	●	+	+	+/-			✓					
Kimball House	115 N. Main St., Village of Mechanicsburg, Champaign County	125, 126	1.2	●	+	+	+/-			✓					
Demand-Gest House	37 N. Main St., Village of Mechanicsburg, Champaign County	125, 126	1.2	●	+	+	+/-			✓					
Rathburn, Levi, House	Locust & Sandusky Sts., Village of Mechanicsburg, Champaign County	125, 126	1.2	●	+	+	+/-			✓					
Mechanicsburg Commercial Historic District	1-11 S. Main St., Village of Mechanicsburg, Champaign County	125, 126	1.3	●	+	+	+/-			✓					
Masonic Temple	N. Main St., Village of Mechanicsburg, Champaign County	125, 126	1.3	●	+	+	+/-			✓					
St. Michael Catholic Church	40 Walnut St, Village of Mechanicsburg, Champaign County	125, 126	1.3	●	+	+	+/-			✓					
Lowler's Tavern	N. Main St., Village of Mechanicsburg, Champaign County	125, 126	1.3	●	+	+	+/-			✓					
Clark, Dr., House	21 N. Main St., Village of Mechanicsburg, Champaign County	125, 126	1.3	●	+	+	+/-			✓					
Village Hobby Shop	N. Main St., Village of Mechanicsburg, Champaign County	125, 126	1.3	●	+	+	+/-			✓					
Second Baptist Church	Sandusky St., Village of Mechanicsburg, Champaign County	125, 126	1.3	●	+	+	+/-			✓					
Magruder Building	16 S. Main St., Village of Mechanicsburg, Champaign County	125, 126	1.3	●	+	+	+/-			✓					
Church Of Our Savior	56 S. Main St., Village of Mechanicsburg, Champaign County	125, 126	1.4	●	+	+	+/-			✓					
Harner's General Store	88 S. Main St., Village of Mechanicsburg, Champaign County	125, 126	1.4	●	+	+	+/-			✓					
Mechanicsburg Baptist Church	Walnut & Sandusky Sts., Village of Mechanicsburg, Champaign County	125, 126	1.4	●	+	+	+/-			✓					
Hunter, Norvall, Farm	S. Main St., Village of Mechanicsburg, Champaign County	125, 126	1.5	●	+	+	+/-			✓					
Potter, Carl, Mound	Address Restricted, Village of Mechanicsburg, Champaign County		1.8	●	+	+/-				✓					
Ward, John Q. A., House	335 College St., City of Urbana, Champaign County	40, 116	2.8	●	+	+	+/-			✓					
Scioto Street Historic District	Scioto St. from Locust to E. Lawn Ave., City of Urbana, Champaign County	116	3.1	●	+	+	+/-			✓					
Richards–Sewell House	222 College St., City of Urbana, Champaign County	116	3.3	●	+	+	+/-			✓					
Urbana College Historic Buildings	College Way, City of Urbana, Champaign County	143	3.4	●	+	+/-	+/-			✓					
Urbana Monument Square Historic District	Roughly bounded by Market, Walnut, Church, and Locust Sts., City of Urbana, Champaign County	116	3.4	●	+	+	+/-			✓					
St. Paul AME Church	316 E. Market St., City of Urbana, Champaign County	116	3.4	●	+	+	+/-			✓					
Mosgrove, Dr. Adam, House	127 Miami St., City of Urbana, Champaign County	116	3.5	●	+	+	+/-			✓					
Elmwood Place	SW of Irwin on OH 161, Irwin, Union County	116	3.8		+	+	+/-			✓					
Nutwood Place	1428 Nutwood Place, City of Urbana, Champaign County	116	4.4		+	+	+/-			✓					
Urbana (NRHP Determination of Eligibility)	318 W. Light St., City of Urbana, Champaign County	116	4.2		+	+	+/-			✓					

Visually Sensitive Resource	Location	VP Number ¹	Distance ² Miles from Nearest Turbine	Distance Zone ● Foreground ● Midground ● Background	Project Visibility			Landscape Similarity Zone				
					+ Visible	- Not Visible	+/- Partially Visible	Rural Res./Ag.	City/Village	Suburban Res.	Hamlet	
					Topographic Viewshed	Topographic & Vegetation Viewshed	Field Review					
State Parks												
Buck Creek State Park	Town of Moorefield, Clark County		3.2	■	+/-	+/-		✓				
National Wildlife Refuges, State Game Refuges and State Wildlife Management Areas												
Urbana Wildlife Propagation Unit	Town of Salem, Champaign County		3.2	●	+/-	+/-		✓				
National Natural Landmarks												
Cedar Bog Nature Preserve	Town of Urbana, Champaign County		3.7	■	+	+/-		✓				
National Parks, Recreation Areas, Seashores and/or Forests												
None in Study Area												
National or State Designated Wild, Scenic, or Recreational Rivers												
None in Study Area												
Sites, Areas, Lakes, Reservoirs or Highways Designated or Eligible as Scenic												
None in Study Area												
State and Federally Designated Trails												
None in Study Area												
State Nature and Historic Preserve Areas												
Darby Wetlands Reserve Program (TNC)	Town of Goshen, Champaign County		0.3	●	+	+/-		✓				
Darby Wetlands Reserve Program (TNC)	Town of Goshen, Champaign County		0.8	●	+	+/-		✓				
Prairie Road Fen Nature Preserve (USACE)	Town of Moorefield, Clark County		3.7	●	+	+/-		✓				
Cedar Bog Nature Preserve (OH Historical Society)	Town of Urbana, Champaign County		3.7	●	+	+/-		✓				
State Historic Markers												
Mechanicsburg United Methodist Church (#25-11)	42 North Main Street, Village of Mechanicsburg, Champaign County	125, 126	1.2	●	+	+	+/-		✓			
Addison White (#16-11)	1 South Main Street, Village of Mechanicsburg, Champaign County	125, 126	1.3	●	+	+	+/-		✓			
Second Baptist Church (#19-11)	43 East Sandusky Street, Village of Mechanicsburg, Champaign County	125, 126	1.3	●	+	+	+/-		✓			
James Roy Hopkins (#23-11)	60 South Main Street, Village of Mechanicsburg, Champaign County	125, 126	1.4	●	+	+	+/-		✓			
Lincoln Funeral Train (#28-11)	6555 Inskeep Road, Hamlet of Cable, Champaign County		1.7	●	+	+					✓	
Joseph E. Wing (#09-11)	Intersection of Wing Road and Rosedale Road, Town of Goshen, Champaign County		2.0	●	+	+		✓				
1950 National and Ohio Plowing Matches (#08-11)	Intersection of Benson Road and State Route 54, Town of Union, Champaign County		2.6	●	+	+		✓				
Lincoln Funeral Train (#24-11)	Urbana-Woodstock Pike/West Bennett, Woodstock Cemetery, Town of Rush, Champaign County		2.6	●	+	+		✓				
In Memory of Simon Kenton (#03-11)	Intersection of Jefferson St. and State Route 54, Oakdale Cemetery, City of Urbana, Champaign County	116	2.8	●	+	+	+/-		✓			
Universalist Church (#31-11)	202 West Bennett, Woodstock, Champaign County		3.0	●	+	+	+/-		✓			
General Robert Lawrence Eichelberger (#14-11)	907 Scioto Street, City of Urbana, Champaign County	116	3.1	●	+	+	+/-		✓			
Cedar Bog Nature Preserve (#06-11)	980 Woodburn Road, Town of Urbana, Champaign County	116	3.2	●	-	-	+/-	✓				

Visually Sensitive Resource	Location	VP Number ¹	Distance ² Miles from Nearest Turbine	Distance Zone ● Foreground ● Midground - Background	Project Visibility			Landscape Similarity Zone			
					+ Visible	- Not Visible	+/- Partially Visible				
					Topographic Viewshed	Topographic & Vegetation Viewshed	Field Review	Rural Res./Ag.	City/Village	Suburban Res.	Hamlet
Kings Creek Baptist Church (#12-11)	1250 Kennard-Kings Creek Road, Town of Urbana, Champaign County		3.2	●	+	+		✓			
John Anderson Ward Farmstead/John Quincy Adams Ward 1830-1910/Edgar Melville Ward 1839-1915 (#13-11)	335 College Street, City of Urbana, Champaign County	116	3.4	●	+	+	+/-		✓		
Bailey and Barclay Halls/Johnny Appleseed (#05-11)	579 College Way, City of Urbana, Champaign County	116	3.4	●	+	+	+/-		✓		
Dayton, Springfield, and Urbana Electric Railway (#15-11)	122 South Main Street, City of Urbana, Champaign County	116	3.5	●	+	+	+/-		✓		
Billy "Single" Clifford/Clifford Theater (#29-11)	114 West Water Street, Urbana, Champaign County	116	3.5	●	+	+	+/-		✓		
Harmony Lodge No. 8 Free and Accepted Masons (#01-11)	222 N. Main Street, City of Urbana, Champaign County	116	3.6	●	+	+	+/-		✓		
Mad River and Lake Erie Railroad (#26-11)	WESTCO Bridge over Miami Street, City of Urbana, Champaign County	116	3.7	●	+	+	+/-		✓		
Mad River and Lake Erie Railroad (#27-11)	WESTCO Bridge over Miami Street, City of Urbana, Champaign County	116	3.7	●	+	+	+/-		✓		
The Johnson Manufacturing Company (#21-11)	605 Miami Street, City of Urbana, Champaign County	116	3.7	●	+	+	+/-		✓		
Pennsylvania Railroad Depot (#30-11)	644 Miami Street, Urbana, Champaign County	116	3.7	●	+	+	+/-		✓		
Warren G. Grimes/Grimes Field (#11-11)	1636 North Main Street, City of Urbana, Champaign County	116	4.2	●	+	+	+/-		✓		
Locally Important Resources											
Areas of Intensive Land Use (City, Village, Hamlet)											
Village of Mechanicsburg	Town of Goshen, Champaign County	125, 126, 127	0.6	●	+	+/-	+/-		✓		
Village of Mutual	Town of Union, Champaign County	16	0.8	●	+	+	+/-		✓		
Hamlet of Cable	Town of Wayne, Champaign County	67	1.3	●	+	+/-	+/-				✓
Hamlet of Fountain Park	Town of Rush, Champaign County		1.5	●	+	+/-					✓
City of Urbana	Towns of Urbana and Salem, Champaign County	40, 116, 142, 143	2.2	●	+/-	+/-	+/-		✓		
Village of Woodstock	Town of Rush, Champaign County	132	2.7	●	+	+	+/-		✓		
Hamlet of Middletown	Town of Wayne, Champaign County	71	2.8	●	+	+/-	+/-				✓
Hamlet of Kennard	Town of Salem, Champaign County	86, 170	3.1	●	+/-	+/-	+/-				✓
CDP of Northridge	Town of Moorefield, Clark County		3.9	●	+/-	+/-			✓		
Hamlet of Mingo	Town of Wayne, Champaign County	76	4.0	●	-	-	+/-				✓
Village of Catawba	Town of Pleasant, Clark County	150	4.3	●	+/-	+/-	+/-		✓		
Village of North Lewisburg	Town of Rush, Champaign County	106, 107	4.4	●	+/-	+/-	+/-		✓		
Transportation Corridors											
State Highway 56	Towns of Union and Goshen, Champaign County	123	0.2	●	+/-	+/-	+		✓		
State Highway 54	Towns of Urbana and Union, Champaign County and Town of Pleasant, Clark County	117-122, 149, 150	0.2	●	+/-	+/-	+		✓	✓	
US Highway 36	Towns of Urbana, Union, Wayne, and Rush, and City of Urbana, Champaign City, Town of Union, Union City	13, 41-43, 51-53, 140, 141	0.2	●	+/-	+/-	+		✓	✓	

Visually Sensitive Resource	Location	VP Number ¹	Distance ² Miles from Nearest Turbine	Distance Zone ● Foreground ● Midground ● Background	Project Visibility			Landscape Similarity Zone			
					+ Visible	- Not Visible	+/- Partially Visible	Rural Res./Ag.	City/Village	Suburban Res.	Hamlet
					Topographic Viewshed	Topographic & Vegetation Viewshed	Field Review				
State Highway 559	Towns of Rush and Goshen and Villages of North Lewisburg and Woodstock, Champaign County	131, 133, 157	0.2	●	+	+/-	+	✓	✓		
State Highway 161	Towns of Union and Goshen, Champaign County and Town of Union, Union County	23, 27, 155-158, 160	0.2	●	+	+/-	+	✓	✓		
State Highway 29	Towns of Salem, Urbana, Union, and Goshen, City of Urbana, Village of Mechanicsburg, Champaign Cty	14-16, 40, 126	0.3	●	+	+	+	✓	✓		
State Highway 814	Towns of Salem and Union, Champaign County	28, 43, 60, 61	0.4	●	+	+	+	✓			
State Highway 4	Town of Moorefield, Clark Cty, Towns of Union and Goshen, Champaign Cty, Town of Union, Union Cty	126, 152	0.4	●	+/-	+/-	+	✓	✓		
State Highway 296	Towns of Salem and Wayne, Champaign County	29, 71, 171	0.7	●	+/-	+/-	+	✓			✓
US Highway 68	Towns of Salem and Urbana and City of Urbana, Champaign County, and Town of Moorefield, Clark County	39, 115	2.4	●	+/-	+/-	+	✓	✓		
State Highway 187	Town of Goshen, Champaign County		2.5	●	+	+	+	✓			
State Highway 55	Towns of Urbana and Mad River and City of Urbana, Champaign County		2.7	●	+/-	+/-	-	✓	✓		
State Highway 245	Towns of Salem, Wayne, and Rush and Village of N. Lewisburg, Champaign Cty	113	2.9	●	+/-	+/-	+	✓	✓		
State Highway 72	Town of Moorefield, Clark County		4.1	●	+	+/-	+/-	✓	✓		
Recreation Resources											
<i>Local Parks and Playgrounds</i>											
Goshen Memorial Park	Village of Mechanicsburg and Town of Goshen, Champaign County	127	0.9	●	+	+/-	+/-		✓		
Roadside Park	City of Urbana, Champaign County	116	2.8	●	+	+	+/-		✓		
Melvin Miller Park	City of Urbana, Champaign County	142	3.3	●	+/-	+/-	-		✓		
Barbara Howell Park	City of Urbana, Champaign County	116	3.4	●	+	+	+/-		✓		
Ward Street Park	City of Urbana, Champaign County	116	3.6	●	+	+	+/-		✓		
Gwynne Street Park	City of Urbana, Champaign County	116	3.9	●	+	+	+/-		✓		
<i>Water Resources</i>											
Treadle Creek	Towns of Wayne, Union, and Goshen, Champaign County and Town of Union, Union County		0.0	●	+	+/-	+	✓			
Buck Creek	Town of Union, Champaign County and Town of Moorefield, Clark County		0.1	●	+	+/-	+	✓			
Jumping Run	Town of Goshen, Champaign County		0.1	●	+	+/-	+	✓			
Dugan Run	Towns of Urbana, Salem, and Wayne and City of Urbana, Champaign County		0.1	●	+/-	+/-	+	✓	✓		
Little Darby Creek	Town of Goshen, Champaign County, Town of Pike, Madison County, and Town of Union, Union County		0.3	●	+/-	+/-	+	✓	✓		
Lake Run	Town of Goshen, Champaign County		0.4	●	+	+/-	+	✓			
Baker Lake	Town of Goshen, Champaign County		0.6	●	+	+/-	+	✓			
East Fork Buck Creek	Town of Union, Champaign County and Town of Moorefield, Clark County		0.7	●	+	+/-	+	✓			
Dugan Ditch	Towns of Union and Urbana, Champaign County		0.9	●	+	+/-	+	✓			

Visually Sensitive Resource	Location	VP Number ¹	Distance ² Miles from Nearest Turbine	Distance Zone ● Foreground ● Midground ● Background	Project Visibility			Landscape Similarity Zone				
					+Visible	- Not Visible	+/- Partially Visible					
					Topographic Viewshed	Topographic & Vegetation Viewshed	Field Review	Rural Res./Ag.	City/Village	Suburban Res.	Hamlet	
Fudger Lake	Town of Goshen, Champaign County		1.0	●	+	+	+	✓				
Clover Run	Town of Goshen, Champaign County		1.2	●	+/-	+/-	+/-	✓				
Proctor Run	Town of Rush, Champaign County and Town of Union, Union County		1.2	●	+	+/-	+/-	✓			✓	
Bogles Run	Towns of Mad River and Urbana, Champaign County		1.5	●	+/-	+/-	+/-	✓				
Moore Run	Town of Urbana, Champaign County and Town of Moorefield, Clark County		1.6	●	+/-	+/-	+/-	✓				
Kings Creek	Towns of Salem and Wayne, Champaign County		1.6	●	+/-	+/-	+/-	✓			✓	
Brush Lake	Town of Rush, Champaign County		1.7	●	+	+/-	+/-	✓				
Howard Run	Town of Rush, Champaign County and Town of Union, Union County		2.0	●	+	+	+	✓				
Third Price Pond	Town of Urbana, Champaign County		2.3	●	+	+	+	✓				
Pleasant Run	Towns of Wayne and Rush, Champaign County		2.4	●	+/-	+/-	+/-	✓				
Second Price Pond	Town of Urbana, Champaign County		2.8	●	+	+/-	+/-	✓				
Spring Fork	Town of Goshen, Champaign County and Town of Pike, Madison County		3.0	●	+/-	+/-	+/-	✓				
First Price Pond	Town of Urbana, Champaign County		3.0	●	+	+	+	✓				
Cedar Run	Towns of Mad River and Urbana, Champaign County		3.9	●	+	+/-	+/-	✓				
Muzzys Lake	Town of Urbana, Champaign County		4.2	●	+/-	+/-	+/-	✓				
Spain Creek	Towns of Wayne and Rush and Village of North Lewisburg, Champaign County		4.2	●	+/-	-	-	✓	✓			
North Fork Deer Creek	Town of Pleasant, Clark County		4.4	●	+	+	+	✓				
C J Brown Reservoir	Town of Moorefield, Clark County		4.5	●	+/-	+/-	+/-	✓				
Mad River	Towns of Salem, Concord, Mad River, and Urbana, Champaign County		4.5	●	+	+/-	+/-	✓				
Georges Fork	Town of Pleasant, Clark County		4.8	●	+	+	+	✓				
<i>Golf Courses</i>												
Woodland Golf Course	Town of Union, Champaign County		0.4	●	+	+/-	+/-	✓				
Urbana Country Club	Town of Union, Champaign County	44	0.5	●	+	+/-	+/-	✓				
Indian Springs Golf Club	Town of Goshen, Champaign County	153	0.7	●	+	+/-	+/-	✓				
<i>Schools and Colleges</i>												
Urbana University	City of Urbana, Champaign County	143	3.0	●	+	+/-	+/-		✓			
Urbana Local Intermediate School	2468 Route 54, Town of Urbana, Champaign County		0.8	●	+	+		✓				
Mechanicsburg Secondary School	60 High Street, Village of Mechanicsburg, Champaign County	125, 126	1.0	●	+	+	+/-		✓			
Dohron Wilson Elementary School	60 High Street, Village of Mechanicsburg, Champaign County	125, 126	1.1	●	+	+	+/-		✓			
Triad High School	8099 Bursh Lake Road, Town of Rush, Champaign County		2.2	●	+	+		✓				
Triad Elementary School	7920 Brush Lake Road, Town of Wayne, Champaign County		2.4	●	+	+		✓				
Triad Middle School	7941 Brush Lake Road, Town of Wayne, Champaign County		2.5	●	+	+		✓				
South Elementary School	City of Urbana, Champaign County	116	3.0	●	+	+	+/-		✓			
Grace Baptist Academy	960 Childrens Home Road, Town of Urbana, Champaign County		3.4	●	+	+		✓				

Visually Sensitive Resource	Location	VP Number ¹	Distance ² Miles from Nearest Turbine	Distance Zone ● Foreground ● Midground - Background	Project Visibility			Landscape Similarity Zone			
					+ Visible	- Not Visible	+/- Partially Visible	Rural Res./Ag.	City/Village	Suburban Res.	Hamlet
					Topographic Viewshed	Topographic & Vegetation Viewshed	Field Review				
East Elementary School	630 Washington Avenue, City of Urbana, Champaign County	116	3.5	●	+	+	+/-		✓		
Urbana High School	500 Washington Avenue, City of Urbana, Champaign County	116	3.6	-	+	+	+/-		✓		
Urbana Junior High School	500 Washington Avenue, City of Urbana, Champaign County	116	3.6	-	+	+	+/-		✓		
North Elementary School	626 North Russell Street, City of Urbana, Champaign County	116	4.0	-	+	+	+/-		✓		
Rolling Hills Elementary School	2613 Moorefield Road, Town of Moorefield, Clark County		4.6	-	+	+		✓			
Cemeteries											
Unnamed Cemetery #3	Off Mutual-Union Road, north of US 38, Town of Union, Champaign County		0.2	●	+	+		✓			
Union Chapel-Union Cemetery	Mutual-Union Road, north of US 36, Town of Union, Champaign County		0.3	●	+	+		✓			
Unnamed Cemetery #2	At intersection of State Rte. 161 and Bean Road, Town of Goshen, Champaign County		0.4	●	+	+		✓			
Sharon Cemetery	Intersection of Stringtown Road and Mutual-Union Road, Town of Union, Champaign County		0.4	●	+	+		✓			
Sodom-Clark Cemetery	US-36, Town of Rush, Champaign County		0.4	●	+	+		✓			
Treadles Creek Cemetery	Parkview Road north of Long Pond Road, Town of Goshen, Champaign County		0.5	●	+	+		✓			
Cornstock-Niles Cemetery	On State Rte. 54, 1/4 mile east of Dolly Varden Road, Town of Urbana, Champaign County		0.5	●	+	+		✓			
Jenkins Chapel-Pleasant View Cemetery	Intersection of Urban and Woodstock Roads, Town of Wayne, Champaign County		0.8	●	+	+		✓			
Britton Cemetery	On State Rte. 4, north of Wing Road, Town of Goshen, Champaign County		0.9	●	+	+/-		✓			
Wolfe Cemetery	Between forks of creek northeast of US 36 and State Rt. 714, Town of Union, Champaign County		1.1	●	+	-		✓			
Fairview Cemetery	North side of OH-29 in Mutual, Ohio, Town of Union, Champaign County		1.1	●	+	+		✓			
Mutual (Grace) Cemetery	State Rt. 29, west of Mutual, Town of Union, Champaign County		1.1	●	+	+		✓			
Wolfe Cemetery	Just east of Prairie Road and south of State Rte. 54, Town of Urbana, Champaign County		1.1	●	+	+		✓			
Unnamed Cemetery #1	Village of Mechanicsburg, Champaign County	125, 126	1.2	●	+	+	+/-		✓		
While Cemetery	East of Ludlow Pike, between US 36 and State Rt. 29, Town of Union, Champaign County		1.2	●	+	+		✓			
Townsend Cemetery	In field opposite east end of Bowers Road, Town of Wayne, Champaign County		1.3	●	+	+		✓			
Mechanicsburg Mausoleum	State Rte 4, in Mechanicsburg, Town of Goshen, Champaign County		1.3	●	+	+		✓			
Maple Grove Cemetery	In Mechanicsburg, along with Mechanicsburg Mausoleum, State Rte. 4, Town of Goshen, Champaign County		1.4	●	+	+		✓			
Cable-Methodist Episcopal Cemetery	West side of Cable behind church, Town of Wayne, Champaign County		1.5	●	+	-					✓
Baptist Cemetery	Middle Urbana Road, 1/2 mile south of Hickory Grove Road, Town of Urbana, Champaign County		1.7	●	+	+		✓			
Winn Cemetery	Prairie Road, just north of Clark County line, Town of Urbana, Champaign County		1.8	●	+	+		✓			

Visually Sensitive Resource	Location	VP Number ¹	Distance ² Miles from Nearest Turbine	Distance Zone ● Foreground ● Midground - Background	Project Visibility			Landscape Similarity Zone			
					+Visible	- Not Visible	+/- Partially Visible	Rural Res./Ag.	City/Village	Suburban Res.	Hamlet
					Topographic Viewshed	Topographic & Vegetation Viewshed	Field Review				
Corbett Cemetery	In middle of field bounded by Black, Blue, and Chatfield Roads, Town of Wayne, Champaign County		2.0	●	+	+		✓			
Buck Creek Cemetery	Hwy 180 near intersection with Everett Road, Town of Union, Champaign County		2.1	●	+	+		✓			
Pisgah Cemetery	Pisgah, Hurst & Ludlow Roads Intersection, Town of Union, Champaign County		2.1	●	+	+		✓			
Hazel Cemetery	State Rte. 4, north of State Rte. 161, Town of Goshen, Champaign County		2.2	●	+	-		✓			
Hopewell #1 Cemetery	North side of Brigner Road, just off State Rt. 56, Town of Union, Champaign County		2.2	●	+	+		✓			
Woodstock Cemetery	Urbana-Woodstock Road (Cty Rd 2), b/w Fountain Park and Woodstock, Town of Rush, Champaign County		2.6	●	+	+		✓			
Oakdale Cemetery	State Rte. 54, just outside Urbana city limits, City of Urbana, Champaign County	116	2.7	●	+	+	+/-		✓		
Georges Chapel-Methodist Episcopal Cemetery	Three Mile Road north of State Rte. 29, Town of Urbana, Champaign County		2.7	●	+	+		✓			
Grandview Cemetery	State Rte. 54, just outside Urbana city limits, Town of Urbana, Champaign County		2.7	●	+	+		✓			
French Cemetery	West of Catawba Station, along NYC Railroad, Town of Union, Champaign County		3.0	●	+	+		✓			
Moorefield Chapel-Mumper Cemetery	East side of Morris Road, south of Mumper Road, Town of Moorefield, Clark County		3.0	●	+	+		✓			
Haines Cemetery	Intersection of Kauffman Road and Burton Road, Town of Rush, Champaign County		3.2	●	+	+		✓			
Meade Cemetery	State Rte. 245, east of Middletown, Town of Wayne, Champaign County		3.3	●	+	+		✓			
Kingscreek Baptist Cemetery	1250 Kennard-Kingscreek Road, Town of Salem, Champaign County		3.3	●	+	+		✓			
Pence Cemetery	1 mile west of US 68, south of Champaign County Home, Town of Urbana, Champaign County		3.4	●	+	-		✓			
Hopewell #2 Cemetery	State Rt. 54, opposite Brigner Road, Town of Union, Champaign County		3.4	●	+	+/-		✓			
Black Cemetery	Near intersection of Township Hwy 150 and Dunn Burton Road, Town of Rush, Champaign County		3.4	●	+	+		✓			
Old Graveyard Cemetery	Intersection of Ward Street and Kenton Street, City of Urbana, Champaign County	116	3.7	-	+	+	+/-		✓		
Kingscreek Methodist Episcopal Cemetery	Clark Road, South of Intersection with Herr Road, Town of Salem, Champaign County		3.8	-	+	+		✓			
Friend-Mount Carmel Cemetery	Town of Salem, Champaign County		3.9	-	-	-		✓			
Mennonite-Oak Grove Cemetery	Ludlow Road between Kanagy Road and Sibley Road, Town of Salem, Champaign County		4.0	-	+	+		✓			
Mount Carmel Cemetery	Town of Salem, Champaign County		4.0	-	+	+		✓			
Mitchell Cemetery	South of Davidson Road, west of State Rte. 187, Town of Goshen, Champaign County		4.0	-	+	+		✓			
Martin Cemetery	State Rte 559, intersection of Martin Road and Lincoln Road, Town of Rush, Champaign County		4.1	-	+	+		✓			
Foley Cemetery	East side of Grant Road, Town of Moorefield, Clark County		4.5	-	+	+/-		✓			

Visually Sensitive Resource	Location	VP Number ¹	Distance ² Miles from Nearest Turbine	Distance Zone ● Foreground ● Midground ● Background	Project Visibility			Landscape Similarity Zone			
					+ Visible	- Not Visible	+/- Partially Visible	Rural Res./Ag.	City/Village	Suburban Res.	Hamlet
					Topographic Viewshed	Topographic & Vegetation Viewshed	Field Review				
Thomas Cemetery	Southwest of State Route 245 and County Rt. 74, Town of Salem, Champaign County		4.5		+	+		✓			
Old Friends Cemetery	3 miles from Kennard, near source of North Fork of King's Creek, Town of Salem, Champaign County		4.5		+	+		✓			
Guy Cemetery	Town of Pike, Madison County		4.7		+	+		✓			
Vernon Cemetery	Intersection of Vernon-Catawba Road and Vernon-Asbury Road, Town of Pleasant, Clark County		5.0		+	+		✓			
Pleasant Hill Cemetery	4287 Mechanicsburg Road, Town of Moorefield, Clark County		5.0		+	+		✓			
Airports											
Weller	3138 E SR 29, Town of Urbana, Champaign County		2.5	●	+	+		✓			
Grimes Field	1636 N Main St., City of Urbana, Champaign County	116	4.5		+	+	+/-		✓		
Hospitals											
Mercy Memorial Hospital	City of Urbana, Champaign County	116	3.1	●	+	+	+/-		✓		
Libraries											
Mechanicsburg Public Library	60 South Main Street, Village of Mechanicsburg, Champaign County	125, 126	1.4	●	+	+	+/-		✓		
Champaign County Library	1060 Scioto Street, City of Urbana, Champaign County	116	2.9	●	+	+	+/-		✓		
Swedenborg Memorial Library	579 College Way, City of Urbana, Champaign County	116	3.5	●	+	+	+/-		✓		
Champaign County Law Library	200 North Main Street #2, City of Urbana, Champaign County	116	3.6		+	+	+/-		✓		
Churches											
Mechanicsburg Christian Church	4401 Allison Road, Village of Mechanicsburg, Champaign County		0.6	●	+	+		✓			
Chapel Hill Church of God	1155 North Ludlow Road, Town of Urbana, Champaign County		0.7	●	+	+		✓			
New Life Christian Church	7016 Urbana Woodstock Road, Town of Wayne, Champaign County		0.8	●	+	+		✓			
Enterprise Church	1929 South Parkview Road, Town of Goshen, Champaign County		0.9	●	+	+		✓			
United Methodist Church	42 North Main Street, Village of Mechanicsburg, Champaign County	125, 126	1.2	●	+	+	+/-		✓		
Saint Michael's Church	40 Walnut Street, Village of Mechanicsburg, Champaign County	125, 126	1.3	●	+	+	+/-		✓		
Mechanicsburg Baptist Church	112 West Sandusky Street, Village of Mechanicsburg, Champaign County	125, 126	1.4	●	+	+	+/-		✓		
Church of Our Saviour Episcopal Church	56 South Main Street, Village of Mechanicsburg, Champaign County	125, 126	1.4	●	+	+	+/-		✓		
Wesley Chapel Baptist Church	1809 Short Cut Road, City of Urbana, Champaign County		1.4	●	+	+		✓			
Cable United Methodist Church	5779 Fillmore Street, Hamlet of Cable, Champaign County		1.6	●	+	-					✓
Urbana Church of Christ	1400 Short Cut Road, City of Urbana, Champaign County		1.9	●	+	+		✓			
Living Faith Baptist Church	2730 East State Route 29, City of Urbana, Champaign County		2.4	●	+	+		✓			
Urbana Church of the Nazarene	1999 East State Route 29, City of Urbana, Champaign County		2.5	●	+	+		✓			
Kingdom Hall-Jehovah's Witness	700 State Route 54, City of Urbana, Champaign County		2.6	●	+	+		✓			
Jerusalem Second Baptist Church	1036 South High Street, City of Urbana, Champaign County	116	2.9	●	+	+	+/-		✓		
Sisters of Mercy	911 Bon Air Drive, City of Urbana, Champaign County	116	2.9	●	+	+	+/-		✓		
Free Will Baptist Church	332 West Bennett, Village of Woodstock, Champaign County	132	2.9	●	+	+	+/-		✓		

Visually Sensitive Resource	Location	VP Number ¹	Distance ² Miles from Nearest Turbine	Distance Zone ● Foreground ● Midground - Background	Project Visibility			Landscape Similarity Zone			
					+ Visible	- Not Visible	+/- Partially Visible	Rural Res./Ag	City/Village	Suburban Res.	Hamlet
					Topographic Viewshed	Topographic & Vegetation Viewshed	Field Review				
Middletown Church of God	6205 State Route 296, Hamlet of Middletown, Champaign County		2.9	●	+	+					✓
Kingscreek Baptist Church	1250 Kennard-Kings Creek Road, Town of Urbana, Champaign County		3.2	●	+	+		✓			
Urbana Swedenborgian Church & Wedding Chapel	330 South Main Street, City of Urbana, Champaign County	116	3.3	●	+	+	+/-		✓		
Kennard Church of the Nazarene	3134 Reed Street, Hamlet of Kennard, Champaign County		3.3	●	+	+					✓
Kings Creek United Methodist Church	1362 Kennard-Kings Creek Road, Town of Urbana, Champaign County		3.3	●	+	+		✓			
Bethesda Apostolic Church	301 East Market Street, City of Urbana, Champaign County	116	3.4	●	+	+	+/-		✓		
Saint Paul AME Church	316 East Market Street, City of Urbana, Champaign County	116	3.4	●	+	+	+/-		✓		
Episcopal Church of Epiphany	230 Scioto Street, City of Urbana, Champaign County	116	3.4	●	+	+	+/-		✓		
New Beginning Fellowship	630 East Ward Street, City of Urbana, Champaign County	116	3.4	●	+	+	+/-		✓		
River of Life Christian Center	775 Washington Avenue, City of Urbana, Champaign County	116	3.4	●	+	+	+/-		✓		
Grace Baptist Church	960 Childrens Home Road, City of Urbana, Champaign County		3.4	●	+	+		✓			
First Presbyterian Church	116 West Court Street, City of Urbana, Champaign County	116	3.6	-	+	+	+/-		✓		
Urbana United Methodist Church	238 North Main Street, City of Urbana, Champaign County	116	3.6	-	+	+	+/-		✓		
El Shaddi Community Church	2815 Clark Road, City of Urbana, Champaign County		3.6	-	+	+		✓			
First Baptist Church	401 North Main, City of Urbana, Champaign County	116	3.7	-	+	+	+/-		✓		
Saint Mary Catholic Church	231 Washington Avenue, City of Urbana, Champaign County	116	3.7	-	+	+	+/-		✓		
Messiah Lutheran Church	1013 East Lawn, City of Urbana, Champaign County	116	3.8	-	+	+	+/-		✓		
Northside Church of God	985 East Lawn Avenue, City of Urbana, Champaign County	116	3.8	-	+	+	+/-		✓		
Mt. Carmel Friends Church	3470 Kennard-Kingscreek Road, Town of Wayne, Champaign County		3.9	-	-	-		✓			
First Christian Church	113 Orange Street, City of Urbana, Champaign County	116	4.0	-	+	+	+/-		✓		
Urbana Fellowship Church	129 North Oakland Street, City of Urbana, Champaign County	116	4.0	-	+	+	+/-		✓		
Urbana Faith Fellowship Church	236 Bloomfield Avenue, City of Urbana, Champaign County	116	4.1	-	+	+	+/-		✓		
New Hope Church of Urbana	531 Hagenbuch Street, City of Urbana, Champaign County	116	4.2	-	+	+	+/-		✓		
Urbana Church of Christ in Christian Union	1115 North Main Street, City of Urbana, Champaign County	116	4.2	-	+	+	+/-		✓		
New Moorefield United Methodist Church	5065 Mechanicsburg Road, Town of Moorefield, Clark County		4.2	-	+	+		✓			
Pleasant Hill Primitive Baptist Church	615 North Oakland Street, City of Urbana, Champaign County	116	4.3	-	+	+	+/-		✓		
North Hills Church of God	2950 Moorefield Road, Town of Moorefield, Clark County		4.3	-	+	+		✓			
Bowlingville United Methodist Church	445 West County Line Road, Town of Moorefield, Clark County		4.6	-	+	+		✓			
Catawba Freewill Baptist Church	58 South Persimmon Street, Hamlet of Catawba, Clark County	150	4.7	-	+	+	+/-		✓		
Eternal Life Ministries	4287 Mechanicsburg Road, Town of Moorefield, Clark County		5.0	-	+	+		✓			
Nursing Homes											
Spring Meadows Care Center	1649 Park Road, Town of Rush, Champaign County		1.5	●	+	+					✓
Community Hearth and Home	1579 East State Route 29, City of Urbana, Champaign County		2.7	●	+	+			✓		
Heartland of Urbana	741 East Water Street, City of Urbana, Champaign County	116	3.1	●	+	+	+/-		✓		

Visually Sensitive Resource	Location	VP Number ¹	Distance ² Miles from Nearest Turbine	Distance Zone ● Foreground ● Midground ● Background	Project Visibility			Landscape Similarity			
					+Visible	- Not Visible	+/- Partially Visible	Zone			
					Topographic Viewshed	Topographic & Vegetation Viewshed	Field Review	Rural Res./Ag.	City/Village	Suburban Res.	Hamlet
Sterling House of Urbana	609 East Water Street, City of Urbana, Champaign County	116	3.1	●	+	+	+/-	✓			
Mercy McAuley Center Nursing Home	906 Scioto Street, City of Urbana, Champaign County	116	3.2	●	+	+	+/-	✓			

¹ If no viewpoint (VP) number is indicated, no photo was obtained during fieldwork. In city and village settings, VP number refers to viewpoints that document the lack of visibility from these areas, even if the viewpoints are not at the exact location of the individual sensitive site.

² For large areas and linear sites, approximate distance to the nearest turbine was measured from the respective area's closest point.

Appendix C

Photo Log and Field Notes
(See Enclosed CD)



Viewpoint - 01



Viewpoint - 02

Buckeye II Wind Project

Goshen, Salem, Rush, Union, Urbana, and Wayne Townships - Champaign County, Ohio

Appendix C: Photo Log

March 2012

everpower

Sheet 1 of 87



Viewpoint - 03



Viewpoint - 04



Buckeye II Wind Project

Goshen, Salem, Rush, Union, Urbana, and Wayne Townships - Champaign County, Ohio

Appendix C: Photo Log

March 2012

everpower

Sheet 2 of 87



Viewpoint - 05



Viewpoint - 06



Buckeye II Wind Project

Goshen, Salem, Rush, Union, Urbana, and Wayne Townships - Champaign County, Ohio

Appendix C: Photo Log

March 2012

everpower

Sheet 3 of 87





Viewpoint - 07



Viewpoint - 08

Buckeye II Wind Project

Goshen, Salem, Rush, Union, Urbana, and Wayne Townships - Champaign County, Ohio

Appendix C: Photo Log

March 2012

everpower

Sheet 4 of 87





Viewpoint - 09



Viewpoint - 10

Buckeye II Wind Project

Goshen, Salem, Rush, Union, Urbana, and Wayne Townships - Champaign County, Ohio

Appendix C: Photo Log

March 2012

everpower

Sheet 5 of 87



Viewpoint - 11



Viewpoint - 12



Buckeye II Wind Project

Goshen, Salem, Rush, Union, Urbana, and Wayne Townships - Champaign County, Ohio

Appendix C: Photo Log

March 2012

everpower

Sheet 6 of 87



Viewpoint - 13



Viewpoint - 14



Buckeye II Wind Project

Goshen, Salem, Rush, Union, Urbana, and Wayne Townships - Champaign County, Ohio

Appendix C: Photo Log

March 2012

everpower

Sheet 7 of 87



Viewpoint - 15



Viewpoint - 16



Buckeye II Wind Project

Goshen, Salem, Rush, Union, Urbana, and Wayne Townships - Champaign County, Ohio

Appendix C: Photo Log

March 2012

everpower

Sheet 8 of 87





Viewpoint - 17



Viewpoint - 18

Buckeye II Wind Project

Goshen, Salem, Rush, Union, Urbana, and Wayne Townships - Champaign County, Ohio

Appendix C: Photo Log

March 2012

everpower

Sheet 9 of 87



Viewpoint - 19



Viewpoint - 20



Buckeye II Wind Project

Goshen, Salem, Rush, Union, Urbana, and Wayne Townships - Champaign County, Ohio

Appendix C: Photo Log

March 2012

everpower

Sheet 10 of 87



This foregoing document was electronically filed with the Public Utilities

Commission of Ohio Docketing Information System on

5/15/2012 3:41:47 PM

in

Case No(s). 12-0160-EL-BGN

Summary: Application of Champaign Wind LLC, Vol III, Part 8 electronically filed by Mr. Michael J. Settineri on behalf of Champaign Wind LLC