

Figure 1: A line graph showing the relationship between the number of hours spent studying and the score on a test. The x-axis represents 'Hours Studied' (0 to 10) and the y-axis represents 'Test Score' (0 to 100). The data points are as follows:

Hours Studied	Test Score
0	50
1	55
2	60
3	65
4	70
5	75
6	80
7	85
8	90
9	95
10	100

FIGURES

Figure 04-1. Constraints Map

Figure 05-1. Geography and Topography

Figure 05-2. Aerial Photography

Figure 05-3. Existing Features

Figure 05-4. Site Layout

Figure 08-1. Ecological Features

Figure 08-2. Land Use

Figure 08-3. Agriculture Resources


Buckeye II Wind Farm

Goshen, Rush, Union, Urbana,
and Wayne Townships
Champaign County, Ohio

Figure 04-1: Constraints Map

Sheet Index

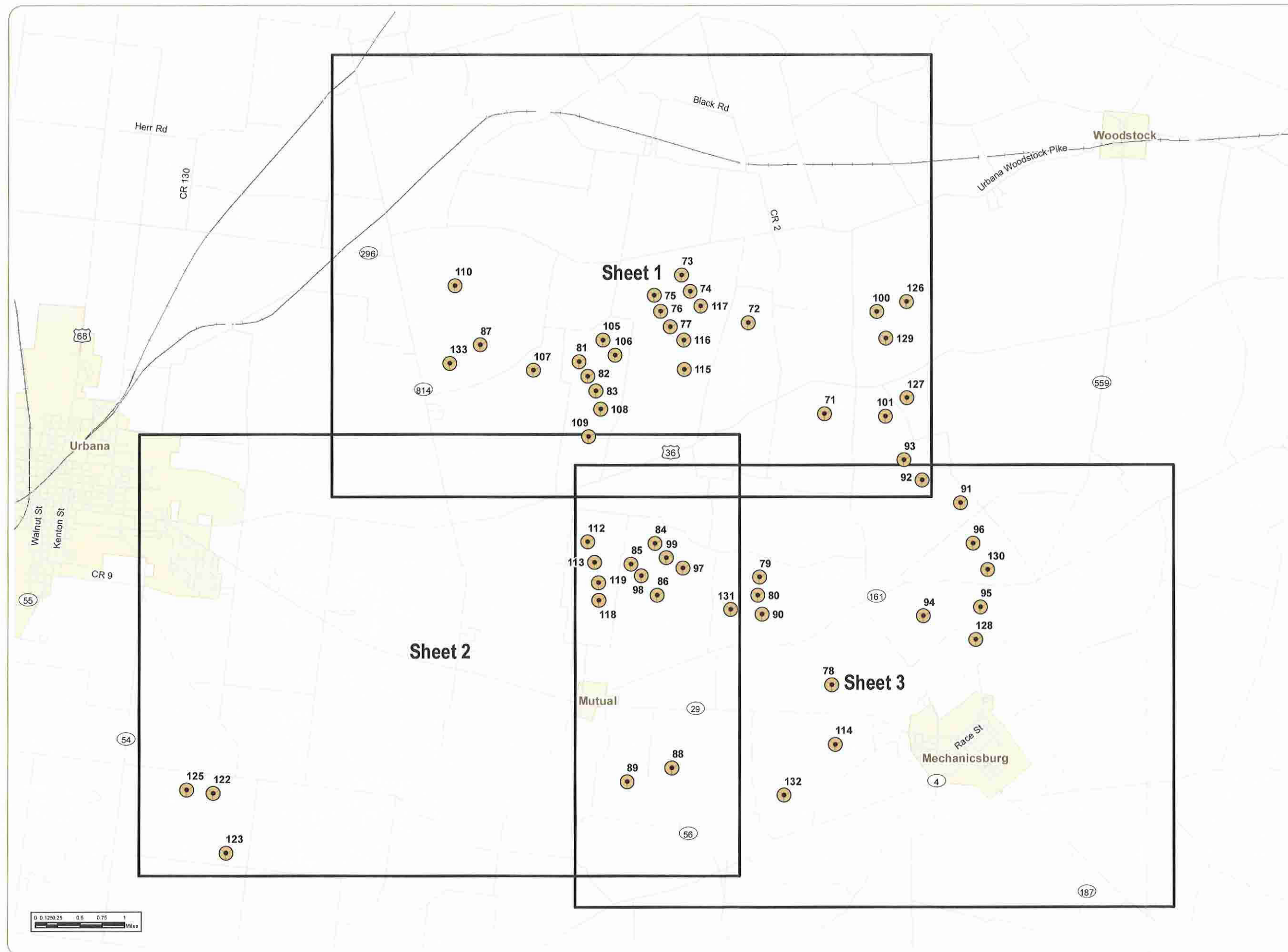
March 2012

-  Wind Turbine
-  Index Sheet

Notes:
1. Receptor data provided by Applicant.
2. Map Scale: 1:30,000
3. Base Map: ESRI StreetMap North America, 2008.



www.edrcompanies.com



Buckeye II Wind Farm

Goshen, Rush, Union, Urbana, and Wayne Townships
Champaign County, Ohio

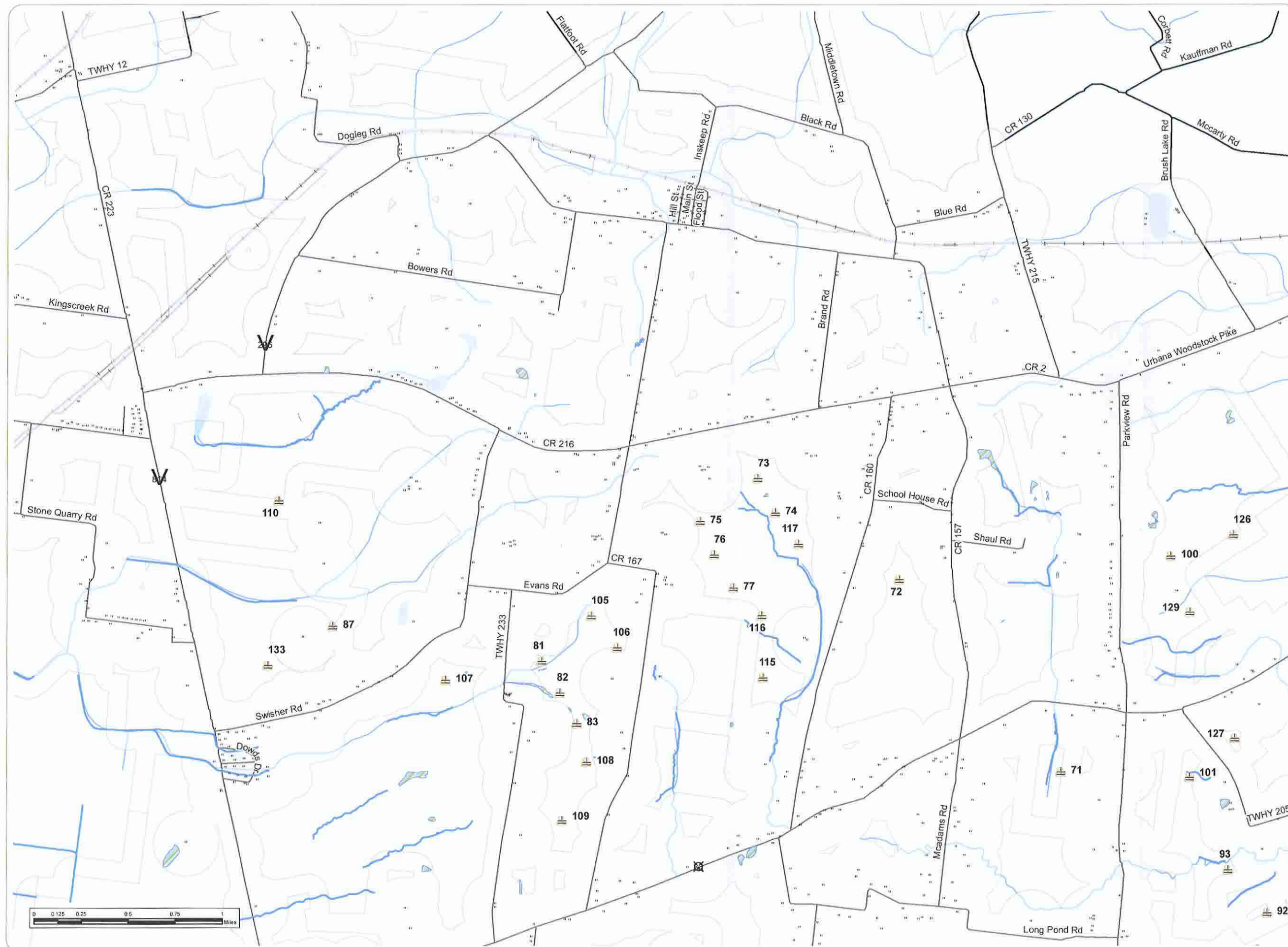
Figure 04-1: Constraints Map

March 2012

- Receptor
- Wind Turbine
- River or Lake
- Delineated Stream
- Delineated Wetland
- Turbine Setbacks

Sheet 1 of 3

Notes:
1. Receptor data provided by Applicant.
Delineated wetlands and streams provided by Hull & Associates Inc.
2. Map Scale: 1:30,000
3. Base Map: ESRI StreetMap North America, 2008.



Buckeye II Wind Farm

Goshen, Rush, Union, Urbana,
and Wayne Townships
Champaign County, Ohio

Figure 04-1: Constraints Map

March 2012

- Receptor
- Wind Turbine
- River or Lake
- Delineated Stream
- Delineated Wetland
- Turbine Setbacks

Sheet 2 of 3

Notes:
1. Receptor data provided by Applicant,
Delineated wetlands and streams provided
by Hull & Associates Inc.
2. Map Scale: 1:30,000
3. Base Map: ESRI StreetMap North America, 2008.



Buckeye II Wind Farm

Goshen, Rush, Union, Urbana,
and Wayne Townships
Champaign County, Ohio

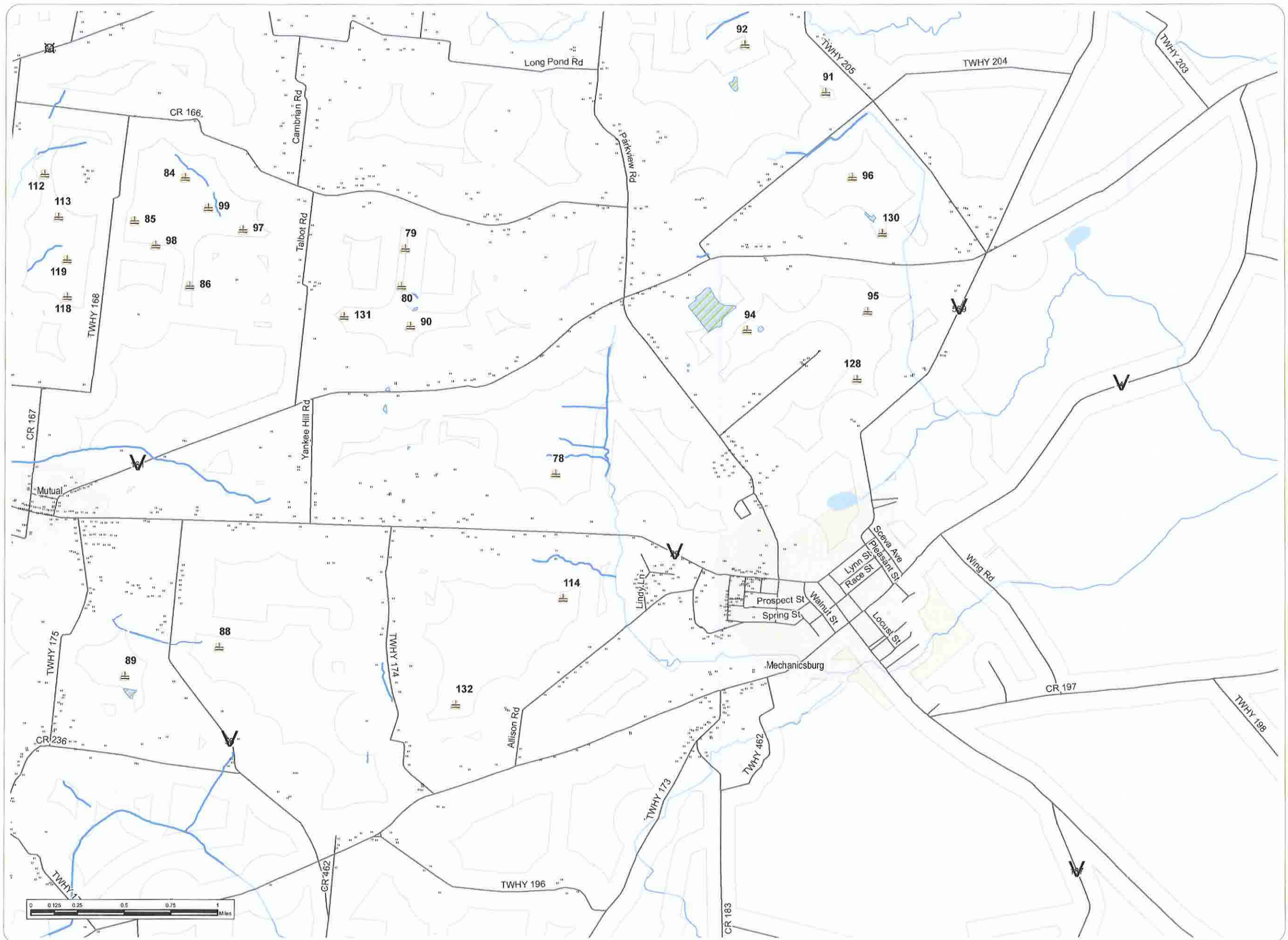
Figure 04-1: Constraints Map

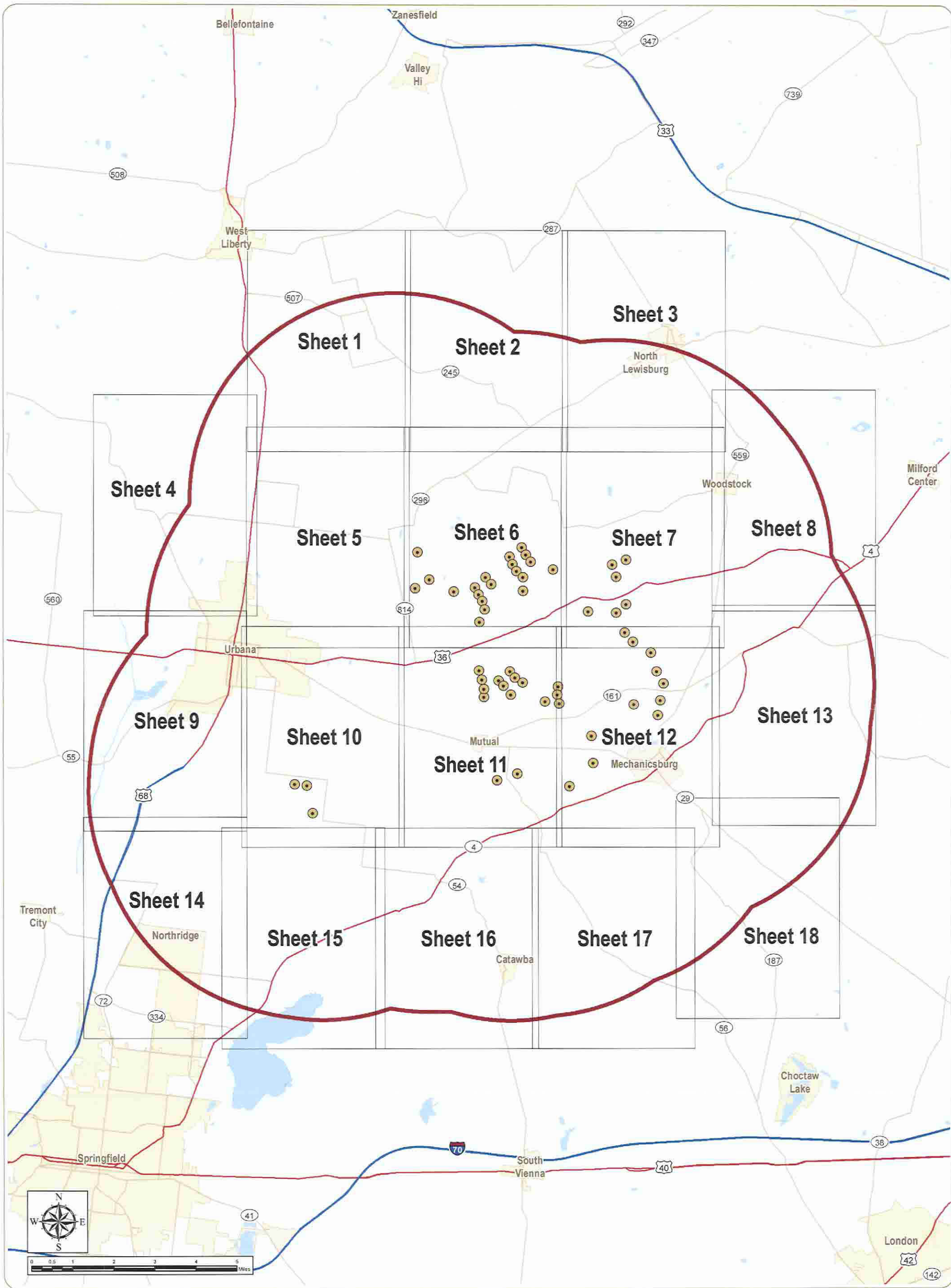
March 2012

- Receptor
- Wind Turbine
- River or Lake
- Delineated Stream
- Delineated Wetland
- Turbine Setbacks

Sheet 3 of 3

Notes:
1. Receptor data provided by Applicant.
Delineated wetlands and streams provided
by Hull & Associates Inc.
2. Map Scale: 1:30,000
3. Base Map: ESRI StreetMap North America, 2008.





Buckeye II Wind Farm
 Goshen, Rush, Union, Urbana, and Wayne
 Townships - Champaign County, Ohio

Figure 05-1: Geography and Topography
 Sheet Index

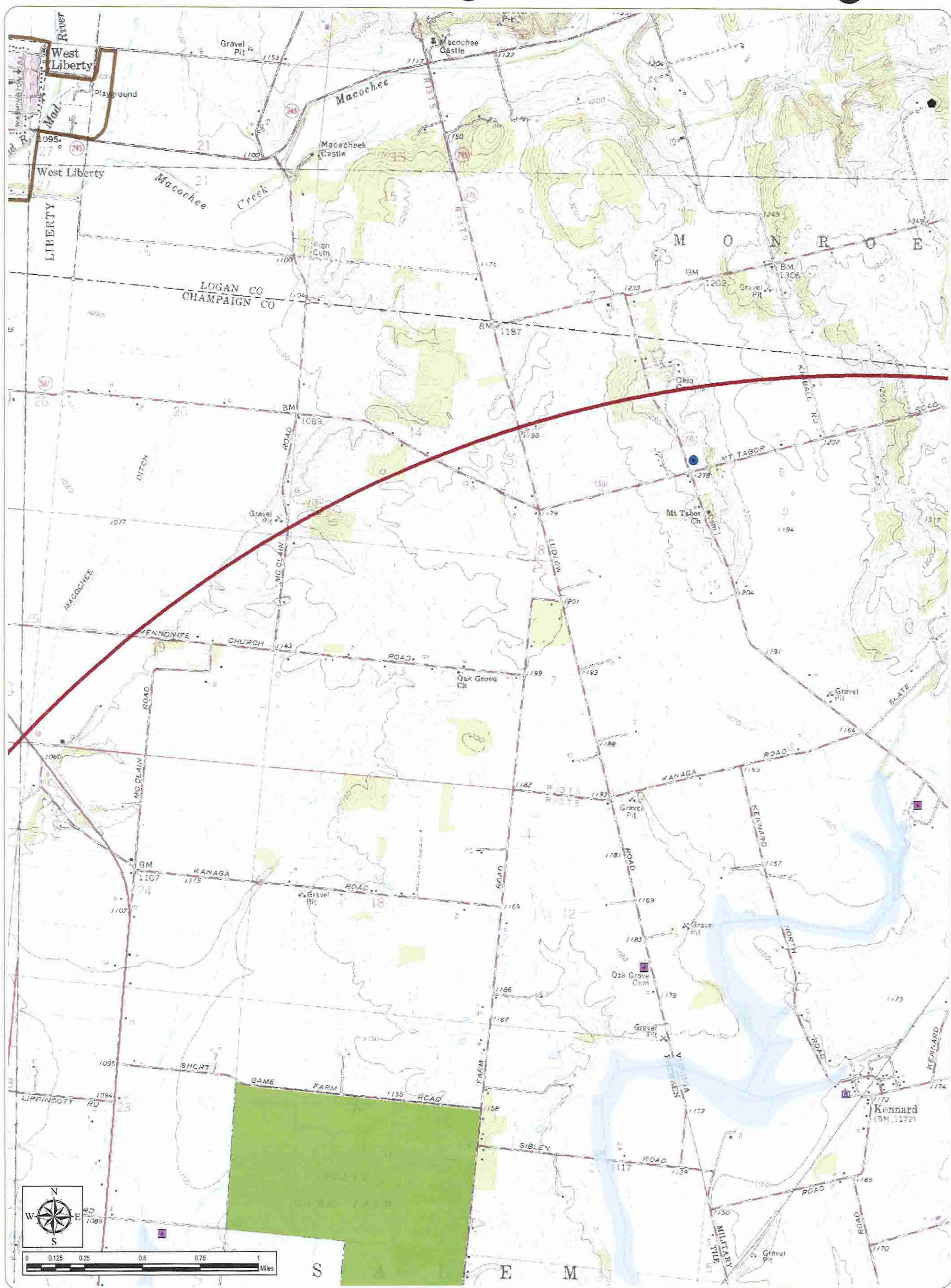
March 2012

- Wind Turbine
- 5-Mile Radius
- Index Sheet

Notes:
 1. Sheets 1-18 are 1:24,000 scale.
 2. Base Map: ESRI StreetMap North America, 2008.

everpower





Buckeye II Wind Farm

Goshen, Rush, Union, Urbana, and Wayne Townships - Champaign County, Ohio

Figure 05-1:
Geography and Topography

Sheet 1 of 18

March 2012

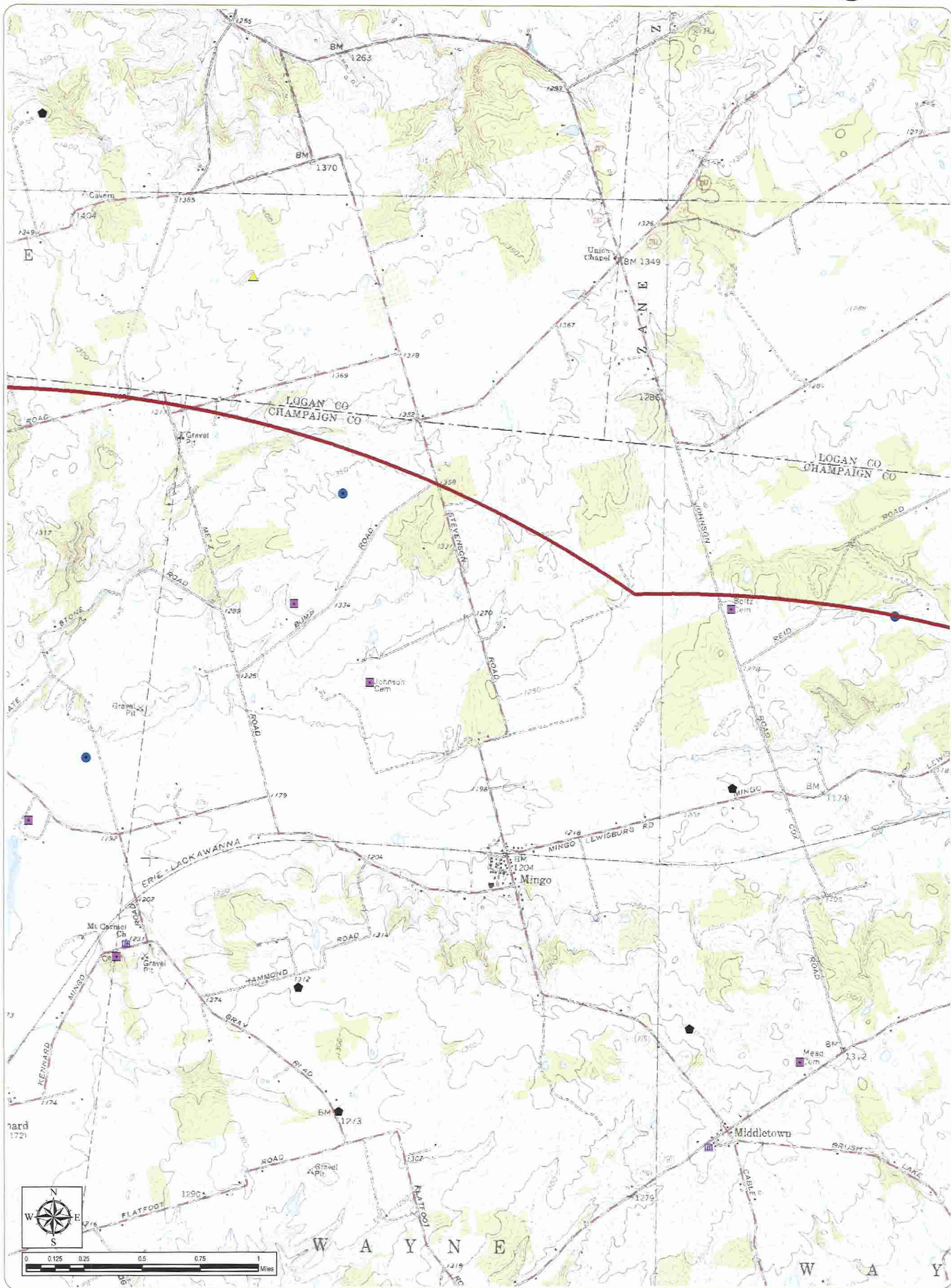
- | | | |
|--------------------------|---------------------|-----------------------|
| ▲ Met Tower | ● Water Well | ▨ Delineated Wetland |
| ○ Wind Turbine | ● Oil or Gas Well | ▨ Archaeological Site |
| — Overhead Interconnect | ✈ Airport | ▨ Golf Course |
| — Buried Interconnect | 🏥 Hospital | ▨ State Wildlife Area |
| — Access Road | 📖 Library | ▨ Local Park |
| ■ Substation | ⚰ Cemetery | ▨ Nature Preserve |
| ■ Temporary Laydown Yard | 🕌 Place of Worship | ▨ College |
| ■ 5-Mile Radius | 🎓 School | ▨ 100-Year Floodplain |
| | — Delineated Stream | ▨ Municipal Boundary |

Notes:

1. Base Map Sheets 1-18: USGS 1:24,000 Bellefontaine, East Liberty, Kingscreek, London, Mechanicsburg, Milford Center, New Moorefield, North Lewisburg, Northville, Peoria, Plumwood, South Vienna, Springfield, Urbana East, Urbana West, and Zanesfield Quadrangles.
2. Delineated wetlands and streams provided by Hull & Associates Inc. Facility shapefiles provided by Applicant. All other features obtained by edr from public databases.
3. Projections: NAD27 UTM Zone 17, NAD83 UTM Zone 17, NAD83 Ohio State Plane North FIPS 3401, and NAD83 Ohio State Plane South FIPS 3402.
4. Map Scale: 1:24,000

everpower

edr
COMPANIES



Buckeye II Wind Farm
Goshen, Rush, Union, Urbana, and Wayne
Townships - Champaign County, Ohio

Figure 05-1:
Geography and Topography
Sheet 2 of 18

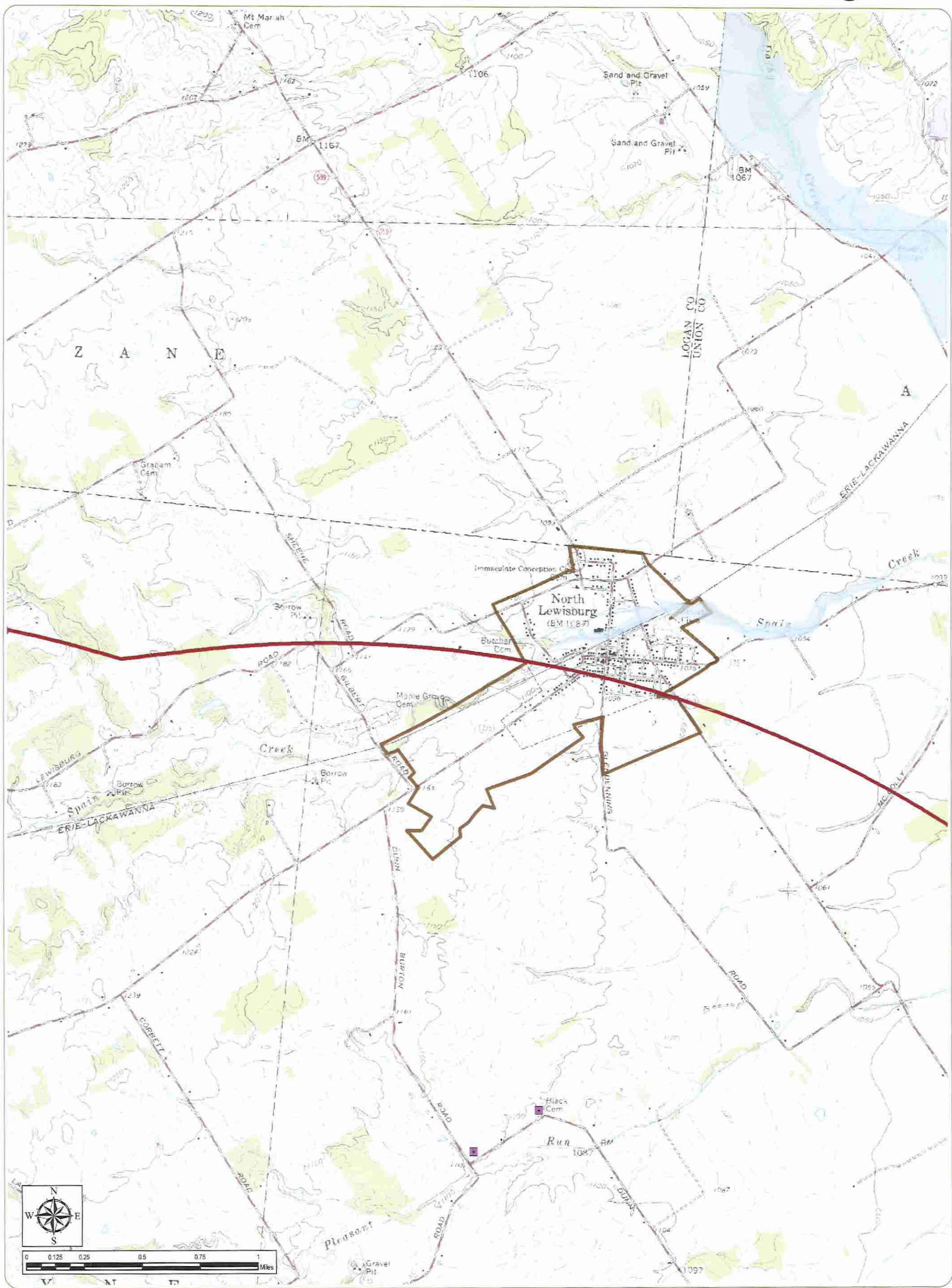
March 2012

- | | | |
|--------------------------|---------------------|-----------------------|
| ▲ Met Tower | ● Water Well | ▨ Delineated Wetland |
| ○ Wind Turbine | ⬢ Oil or Gas Well | ▨ Archaeological Site |
| — Overhead Interconnect | ✈ Airport | ▨ Golf Course |
| — Buried Interconnect | H Hospital | ▨ State Wildlife Area |
| — Access Road | L Library | ▨ Local Park |
| — Substation | C Cemetery | ▨ Nature Preserve |
| — Temporary Laydown Yard | P Place of Worship | ▨ College |
| — 5-Mile Radius | S School | ▨ 100-Year Floodplain |
| | — Delineated Stream | ▨ Municipal Boundary |

Notes:
1. Base Map Sheets 1-18: USGS 1:24,000 Bellefontaine, East Liberty, Kingscreek, London, Mechanicsburg, Milford Center, New Moorefield, North Lewisburg, Northville, Peoria, Plumwood, South Vienna, Springfield, Urbana East, Urbana West, and Zanefield Quadrangles.
2. Delineated wetlands and streams provided by Hull & Associates Inc. Facility shapefiles provided by Applicant.
3. Projections: NAD27 UTM Zone 17, NAD83 UTM Zone 17, NAD83 Ohio State Plane North FIPS 3401, and NAD83 Ohio State Plane South FIPS 3402.
4. Map Scale: 1:24,000

everpower

edr
COMPANIES



Buckeye II Wind Farm

Goshen, Rush, Union, Urbana, and Wayne Townships - Champaign County, Ohio

**Figure 05-1:
Geography and Topography**

Sheet 3 of 18

March 2012

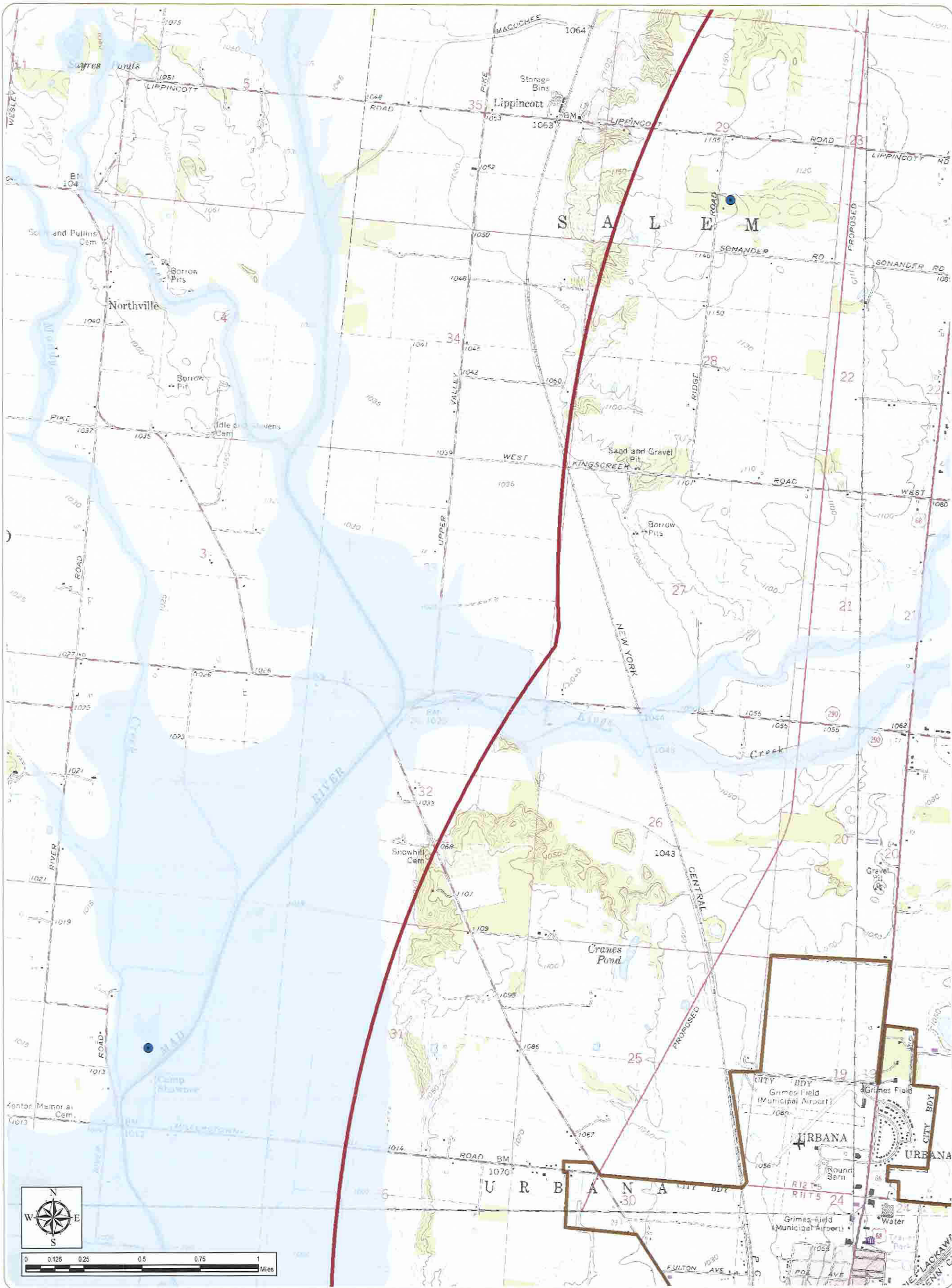
- | | | |
|--------------------------|---------------------|-----------------------|
| ▲ Met Tower | ● Water Well | ▨ Delineated Wetland |
| ○ Wind Turbine | ● Oil or Gas Well | ▨ Archaeological Site |
| — Overhead Interconnect | ✈ Airport | ▨ Golf Course |
| — Buried Interconnect | 🏥 Hospital | ▨ State Wildlife Area |
| — Access Road | 📖 Library | ▨ Local Park |
| — Substation | ⚰ Cemetery | ▨ Nature Preserve |
| — Temporary Laydown Yard | 🕌 Place of Worship | ▨ College |
| — 5-Mile Radius | 🎓 School | ▨ 100-Year Floodplain |
| | — Delineated Stream | ▨ Municipal Boundary |

Notes:

1. Base Map Sheets 1-18: USGS 1:24,000 Bellefontaine, East Liberty, Kingscreek, London, Mechanicsburg, Milford Center, New Moorefield, North Lewisburg, Northville, Peoria, Plumwood, South Vienna, Springfield, Urbana East, Urbana West, and Zanesville Quadrangles.
2. Delineated wetlands and streams provided by Hull & Associates Inc. Facility shapefiles provided by Applicant. All other features obtained by edr from public databases.
3. Projections: NAD27 UTM Zone 17, NAD83 UTM Zone 17, NAD83 Ohio State Plane North FIPS 3401, and NAD83 Ohio State Plane South FIPS 3402.
4. Map Scale: 1:24,000

everpower

edr
COMPANIES



Buckeye II Wind Farm

Goshen, Rush, Union, Urbana, and Wayne Townships - Champaign County, Ohio

Figure 05-1:
Geography and Topography

Sheet 4 of 18

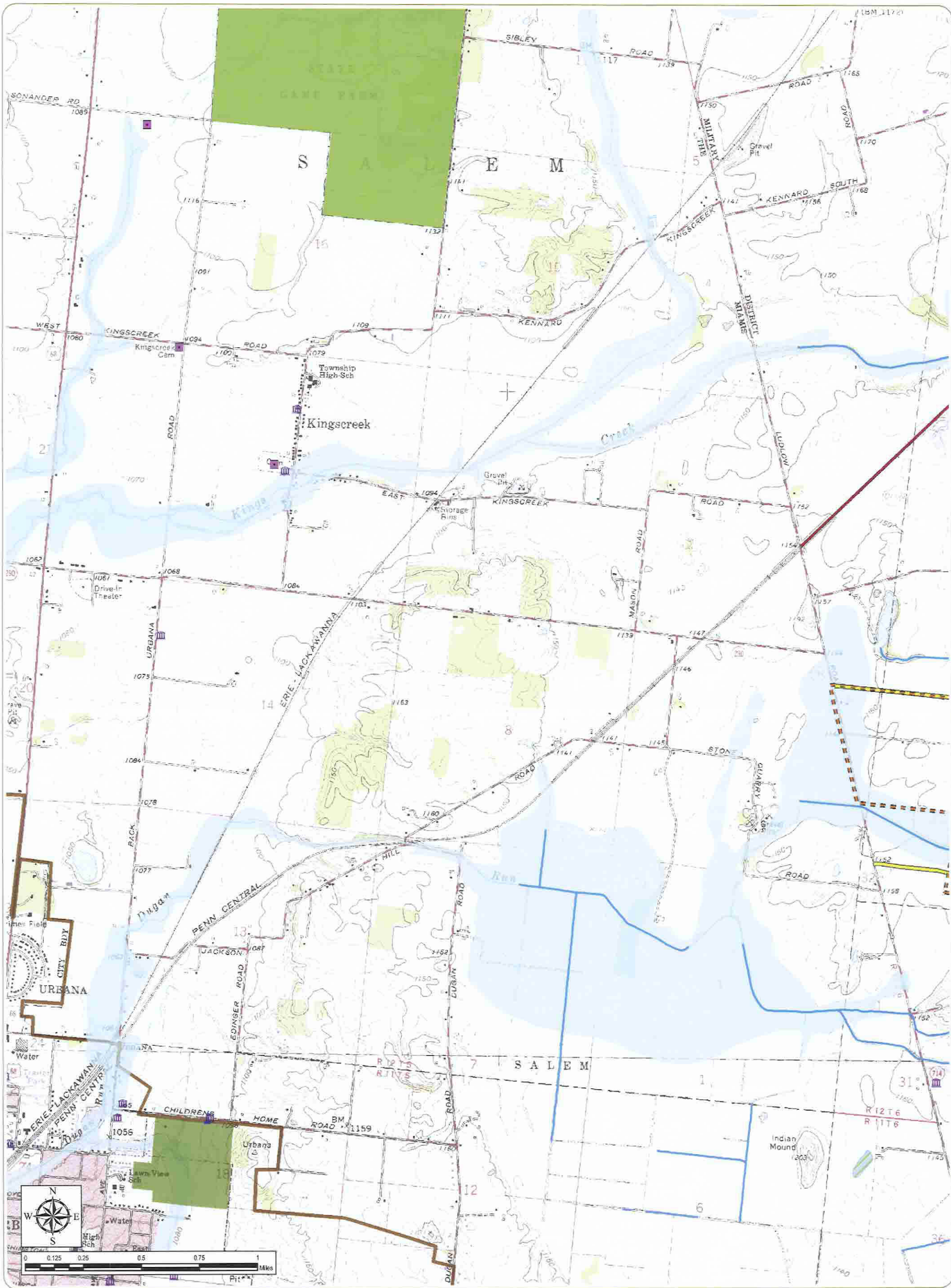
March 2012

- | | | |
|--------------------------|---------------------|-----------------------|
| ▲ Met Tower | ● Water Well | ▨ Delineated Wetland |
| ● Wind Turbine | ● Oil or Gas Well | ▨ Archaeological Site |
| — Overhead Interconnect | ✈ Airport | ▨ Golf Course |
| — Buried Interconnect | 🏥 Hospital | ▨ State Wildlife Area |
| — Access Road | 📖 Library | ▨ Local Park |
| — Substation | ⚰ Cemetery | ▨ Nature Preserve |
| — Temporary Laydown Yard | 🕌 Place of Worship | ▨ College |
| ⬢ 5-Mile Radius | 🎓 School | ▨ 100-Year Floodplain |
| | — Delineated Stream | ▨ Municipal Boundary |

- Notes:
1. Base Map Sheets 1-18: USGS 1:24,000 Bellefontaine, East Liberty, Kingscreek, London, Mechanicsburg, Milford Center, New Moorefield, North Lewisburg, Northville, Peoria, Plumwood, South Vienna, Springfield, Urbana East, Urbana West, and Zanesfield Quadrangles.
 2. Delineated wetlands and streams provided by Hull & Associates Inc. Facility shapes provided by Applicant. All other features obtained by edr from public databases.
 3. Projections: NAD27 UTM Zone 17, NAD83 UTM Zone 17, NAD83 Ohio State Plane North FIPS 3401, and NAD83 Ohio State Plane South FIPS 3402.
 4. Map Scale: 1:24,000

everpower

edr
COMPANIES



Buckeye II Wind Farm
 Goshen, Rush, Union, Urbana, and Wayne
 Townships - Champaign County, Ohio

Figure 05-1:
Geography and Topography
 Sheet 5 of 18

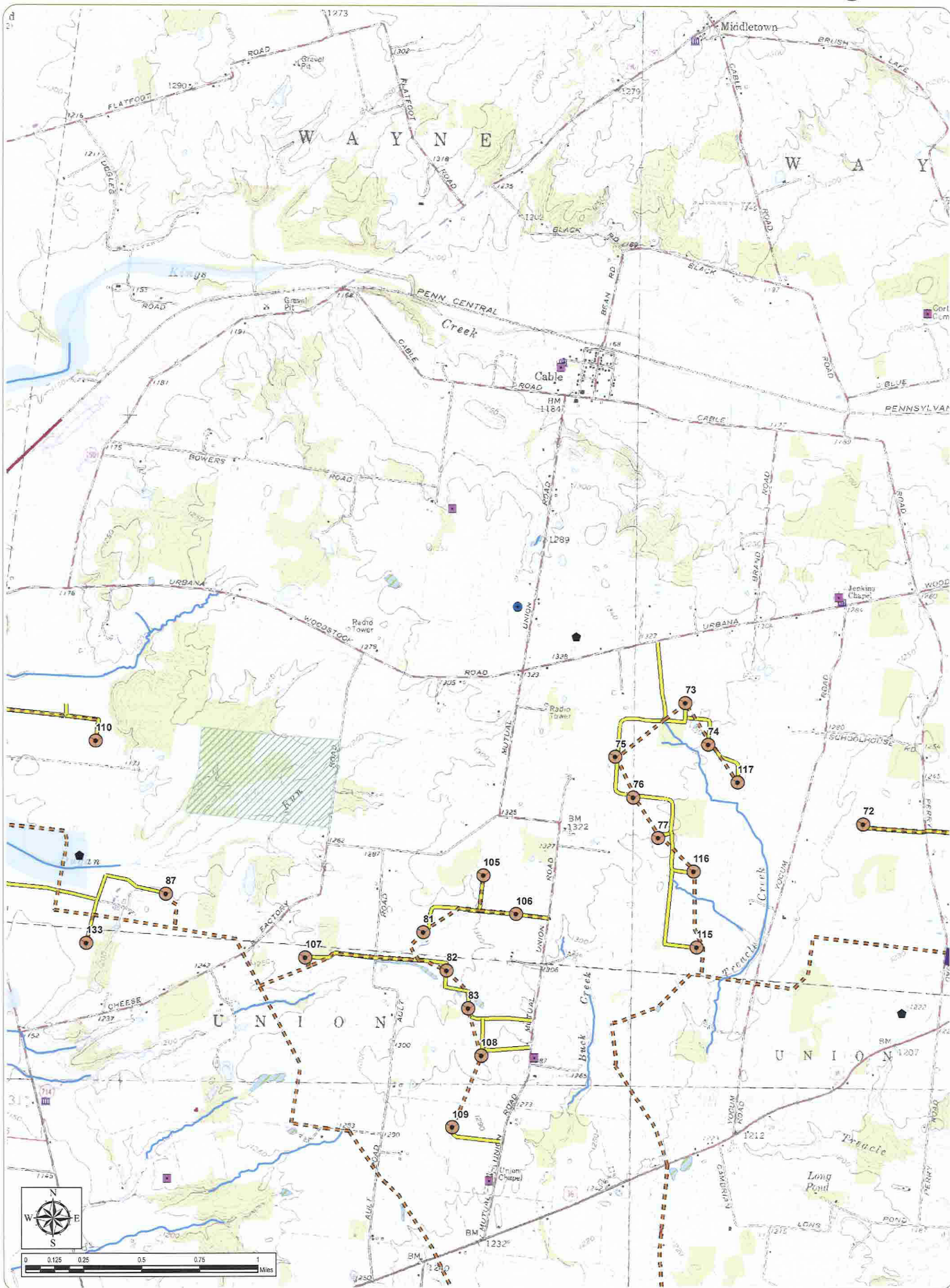
March 2012

- | | | |
|---|--|--|
| <ul style="list-style-type: none"> ▲ Met Tower ● Wind Turbine — Overhead Interconnect — Buried Interconnect — Access Road — Substation — Temporary Laydown Yard — 5-Mile Radius | <ul style="list-style-type: none"> ● Water Well ● Oil or Gas Well ✈ Airport H Hospital L Library C Cemetery W Place of Worship S School — Delineated Stream | <ul style="list-style-type: none"> — Delineated Wetland — Archaeological Site — Golf Course — State Wildlife Area — Local Park — Nature Preserve — College — 100-Year Floodplain — Municipal Boundary |
|---|--|--|

Notes:
 1. Base Map Sheets 1-18: USGS 1:24,000 Bellefontaine, East Liberty, Kingscreek, London, Mechanicsburg, Milford Center, New Moorefield, North Lewisburg, Northville, Peoria, Plumwood, South Vienna, Springfield, Urbana East, Urbana West, and Zanesfield Quadrangles.
 2. Delineated wetlands and streams provided by Hull & Associates Inc. Facility shapefiles provided by Applicant.
 All other features obtained by edr from public databases.
 3. Projections: NAD27 UTM Zone 17, NAD83 UTM Zone 17, NAD83 Ohio State Plane North FIPS 3401, and NAD83 Ohio State Plane South FIPS 3402.
 4. Map Scale: 1:24,000

everpower





Buckeye II Wind Farm

Goshen, Rush, Union, Urbana, and Wayne Townships - Champaign County, Ohio

Figure 05-1:
Geography and Topography

Sheet 6 of 18

March 2012

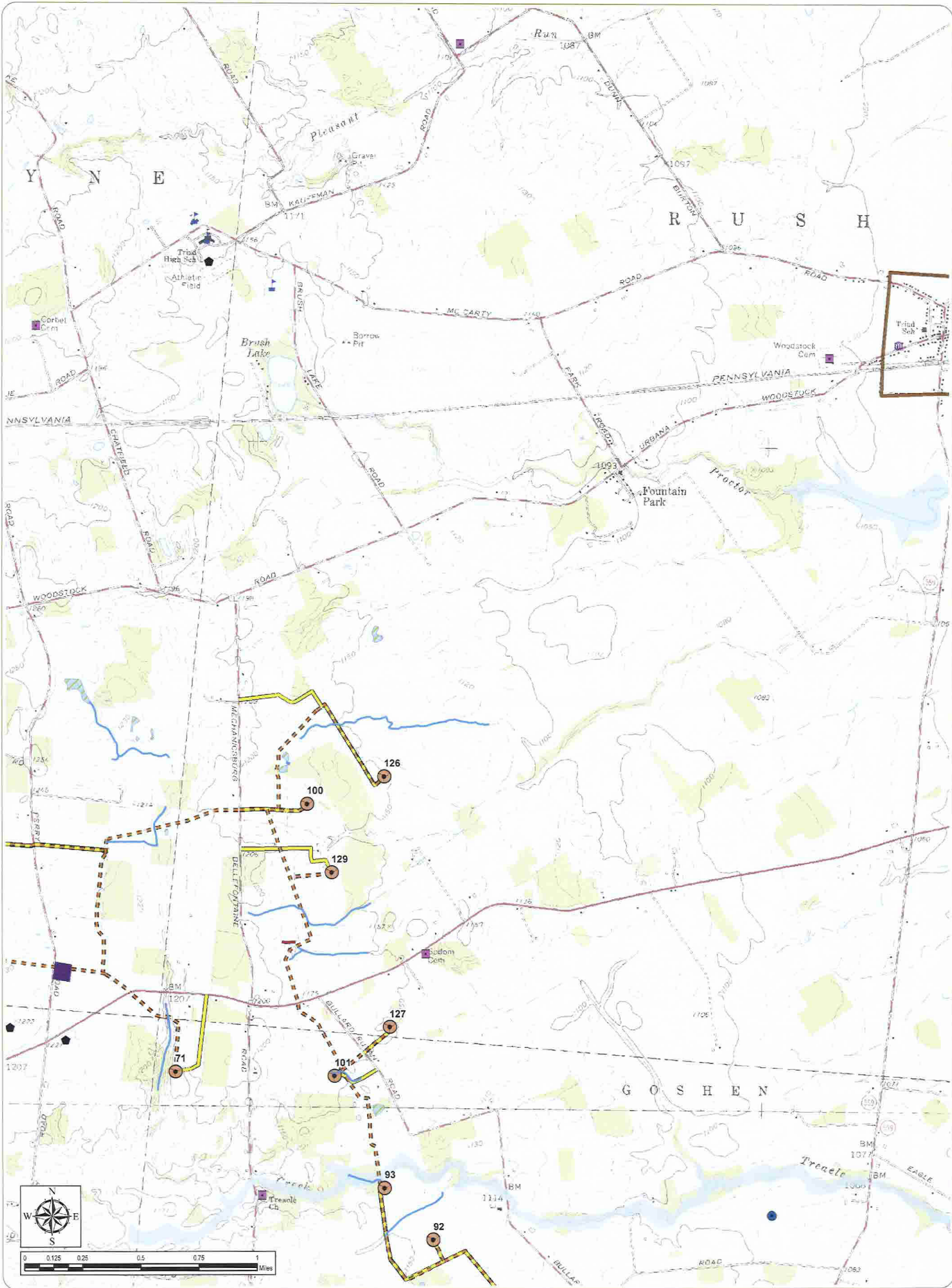
- | | | |
|--------------------------|---------------------|-----------------------|
| ▲ Met Tower | ● Water Well | ▨ Delineated Wetland |
| ○ Wind Turbine | ● Oil or Gas Well | ▨ Archaeological Site |
| — Overhead Interconnect | ✈ Airport | ▨ Golf Course |
| — Buried Interconnect | H Hospital | ▨ State Wildlife Area |
| — Access Road | 📖 Library | ▨ Local Park |
| ■ Substation | ☠ Cemetery | ▨ Nature Preserve |
| ■ Temporary Laydown Yard | 🏛 Place of Worship | ▨ College |
| ■ 5-Mile Radius | 🎓 School | ▨ 100-Year Floodplain |
| | — Delineated Stream | ▨ Municipal Boundary |

Notes:

1. Base Map Sheets 1-18: USGS 1:24,000 Bellefontaine, East Liberty, Kingscreek, London, Mechanicsburg, Milford Center, New Moorefield, North Lewisburg, Northville, Peoria, Plumwood, South Vienna, Springfield, Urbana East, Urbana West, and Zanesfield Quadrangles.
2. Delineated wetlands and streams provided by Hull & Associates Inc. Facility shapefiles provided by Applicant. All other features obtained by edr from public databases.
3. Projections: NAD27 UTM Zone 17, NAD83 UTM Zone 17, NAD83 Ohio State Plane North FIPS 3401, and NAD83 Ohio State Plane South FIPS 3402.
4. Map Scale: 1:24,000

everpower

edr
COMPANIES



Buckeye II Wind Farm
 Goshen, Rush, Union, Urbana, and Wayne
 Townships - Champaign County, Ohio

Figure 05-1:
Geography and Topography
 Sheet 7 of 18

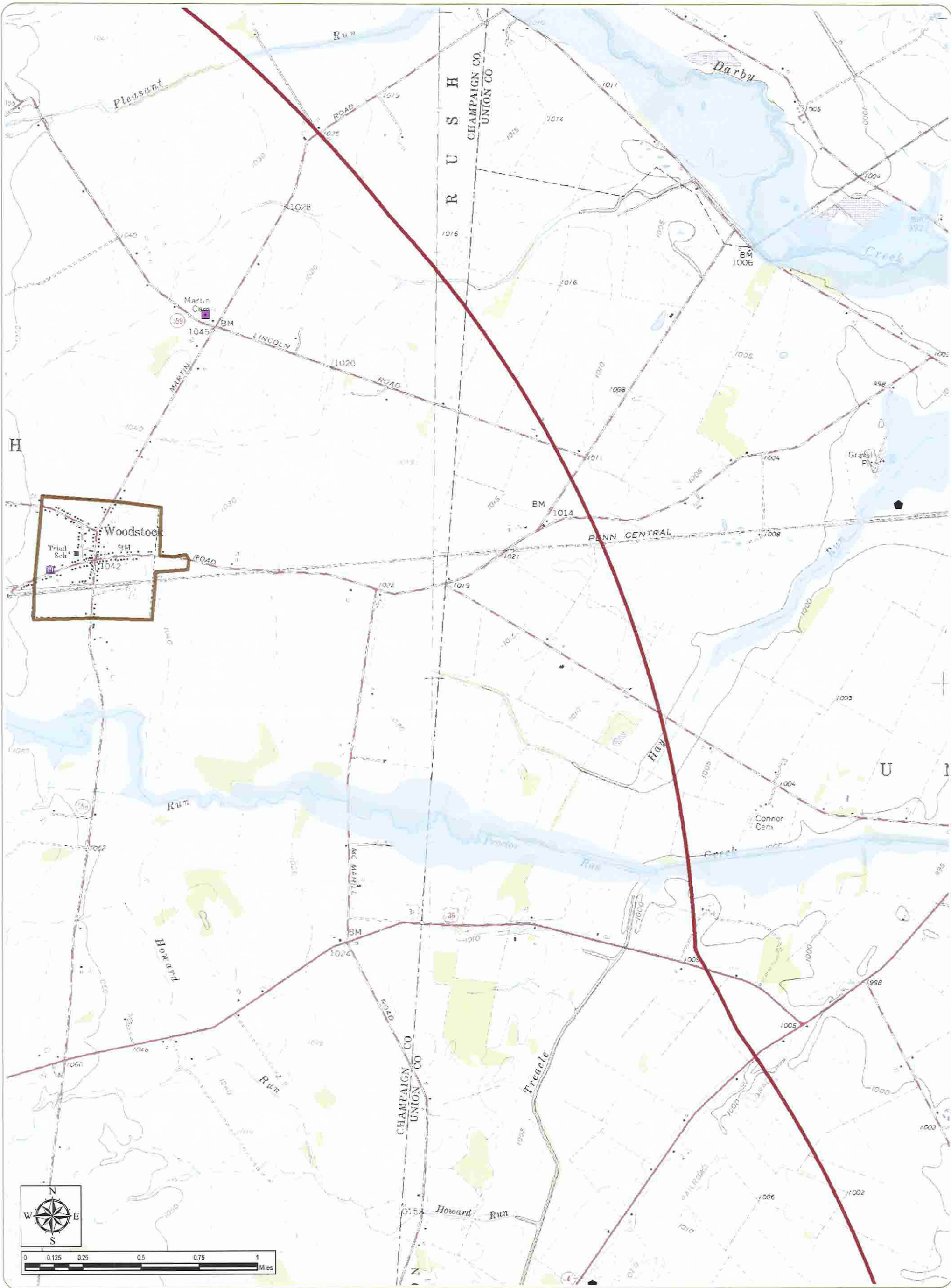
March 2012

- | | | |
|---|--|--|
| <ul style="list-style-type: none"> ▲ Met Tower ○ Wind Turbine — Overhead Interconnect - - - Buried Interconnect — Access Road ■ Substation ■ Temporary Laydown Yard ■ 5-Mile Radius | <ul style="list-style-type: none"> ● Water Well ● Oil or Gas Well ✈ Airport H Hospital L Library ■ Cemetery ■ Place of Worship ■ School — Delineated Stream | <ul style="list-style-type: none"> ■ Delineated Wetland ■ Archaeological Site ■ Golf Course ■ State Wildlife Area ■ Local Park ■ Nature Preserve ■ College ■ 100-Year Floodplain ■ Municipal Boundary |
|---|--|--|

Notes:
 1. Base Map Sheets 1-18: USGS 1:24,000 Bellefontaine, East Liberty, Kingscreek, London, Mechanicsburg, Milford Center, New Moorefield, North Lewisburg, Northville, Peoria, Plumwood, South Vienna, Springfield, Urbana East, Urbana West, and Zanesfield Quadrangles.
 2. Delineated wetlands and streams provided by Hull & Associates Inc. Facility shapefiles provided by Applicant.
 All other features obtained by edr from public databases.
 3. Projections: NAD27 UTM Zone 17, NAD83 UTM Zone 17, NAD83 Ohio State Plane North FIPS 3401, and NAD83 Ohio State Plane South FIPS 3402.
 4. Map Scale: 1:24,000

everpower

edr
 COMPANIES



Buckeye II Wind Farm
Goshen, Rush, Union, Urbana, and Wayne
Townships - Champaign County, Ohio

Figure 05-1:
Geography and Topography
Sheet 8 of 18

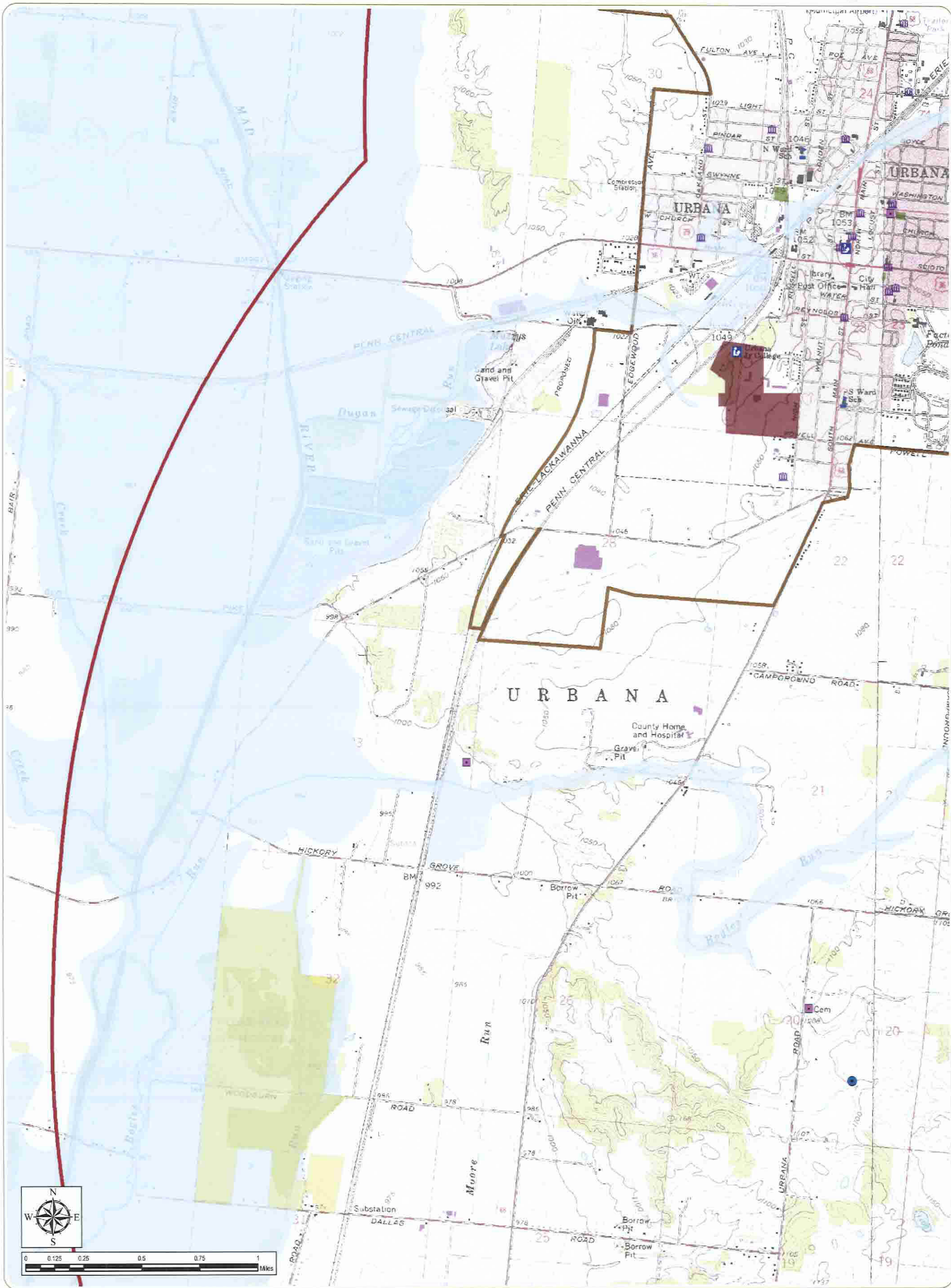
March 2012

- | | | |
|--------------------------|---------------------|-----------------------|
| ▲ Met Tower | ● Water Well | ▨ Delineated Wetland |
| ● Wind Turbine | ● Oil or Gas Well | ▨ Archaeological Site |
| — Overhead Interconnect | ✈ Airport | ▨ Golf Course |
| — Buried Interconnect | H Hospital | ▨ State Wildlife Area |
| — Access Road | L Library | ▨ Local Park |
| — Substation | ☠ Cemetery | ▨ Nature Preserve |
| — Temporary Laydown Yard | ☠ Place of Worship | ▨ College |
| — 5-Mile Radius | ☠ School | ▨ 100-Year Floodplain |
| | — Delineated Stream | ▨ Municipal Boundary |

Notes:
1. Base Map Sheets 1-18: USGS 1:24,000 Bellefontaine, East Liberty, Kingscreek, London, Mechanicsburg, Milford Center, New Moorefield, North Lewisburg, Northville, Peoria, Plumwood, South Vienna, Springfield, Urbana East, Urbana West, and Zanesfield Quadrangles.
2. Delineated wetlands and streams provided by Hull & Associates Inc. Facility shapefiles provided by Applicant.
All other features obtained by edr from public databases.
3. Projections: NAD27 UTM Zone 17, NAD83 UTM Zone 17, NAD83 Ohio State Plane North FIPS 3401, and NAD83 Ohio State Plane South FIPS 3402.
4. Map Scale: 1:24,000

everpower





Buckeye II Wind Farm

Goshen, Rush, Union, Urbana, and Wayne Townships - Champaign County, Ohio

Figure 05-1:
Geography and Topography

Sheet 9 of 18

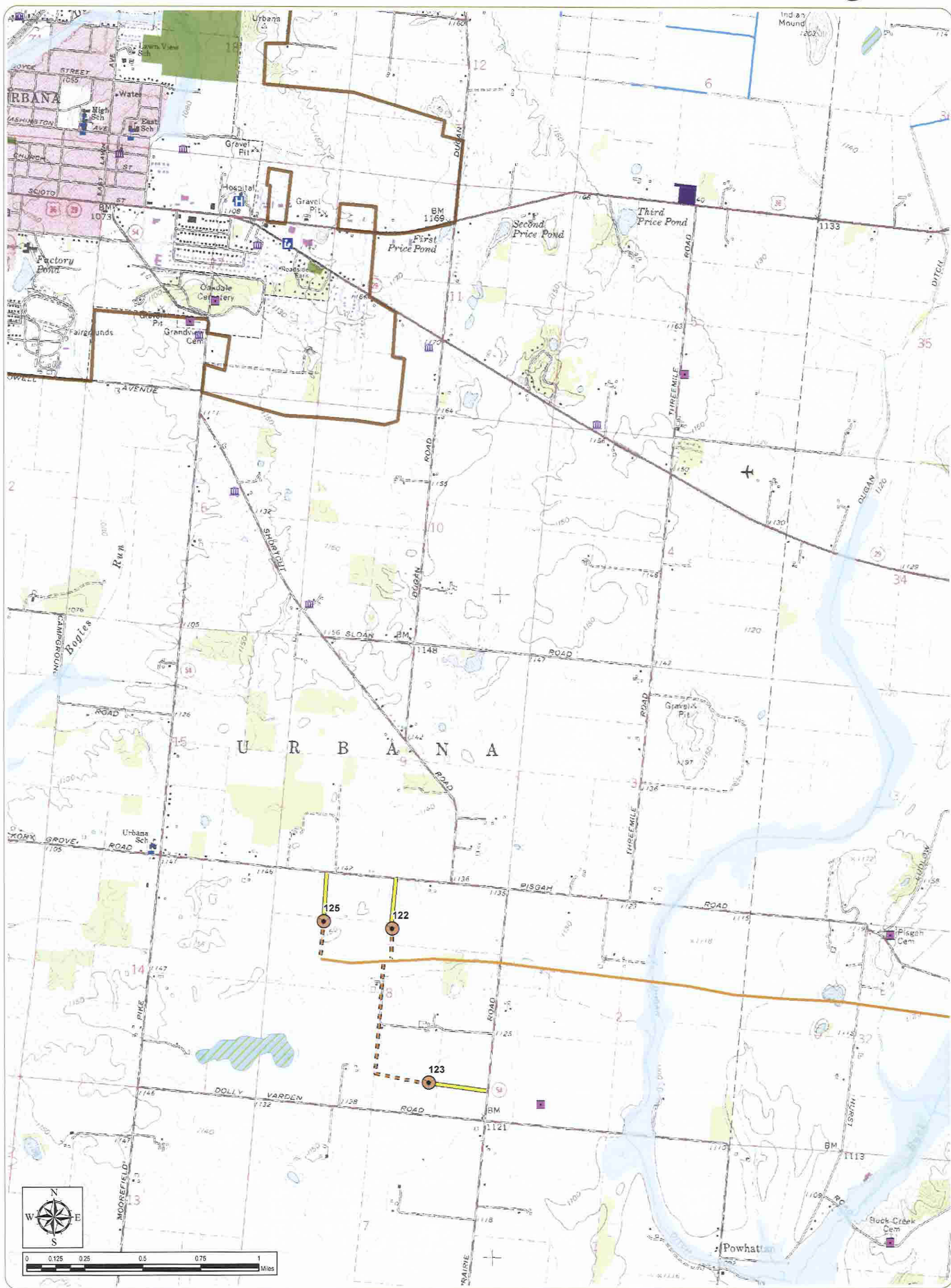
March 2012

- | | | |
|--------------------------|---------------------|-----------------------|
| ▲ Met Tower | ● Water Well | ▨ Delineated Wetland |
| ● Wind Turbine | ◆ Oil or Gas Well | ▨ Archaeological Site |
| — Overhead Interconnect | ✈ Airport | ▨ Golf Course |
| — Buried Interconnect | H Hospital | ▨ State Wildlife Area |
| — Access Road | L Library | ▨ Local Park |
| — Substation | C Cemetery | ▨ Nature Preserve |
| — Temporary Laydown Yard | P Place of Worship | ▨ College |
| — 5-Mile Radius | S School | ▨ 100-Year Floodplain |
| | — Delineated Stream | ▨ Municipal Boundary |

Notes:
1. Base Map Sheets 1-18: USGS 1:24,000 Bellefontaine, East Liberty, Kingscreek, London, Mechanicsburg, Milford Center, New Moorefield, North Lewisburg, Northville, Peoria, Plumwood, South Vienna, Springfield, Urbana East, Urbana West, and Zanesfield Quadrangles.
2. Delineated wetlands and streams provided by Hull & Associates Inc. Facility shapefiles provided by Applicant.
3. All other features obtained by edr from public databases.
3. Projections: NAD27 UTM Zone 17, NAD83 UTM Zone 17, NAD83 Ohio State Plane North FIPS 3401, and NAD83 Ohio State Plane South FIPS 3402.
4. Map Scale: 1:24,000

everpower





Buckeye II Wind Farm

Goshen, Rush, Union, Urbana, and Wayne Townships - Champaign County, Ohio

**Figure 05-1:
Geography and Topography**

Sheet 10 of 18

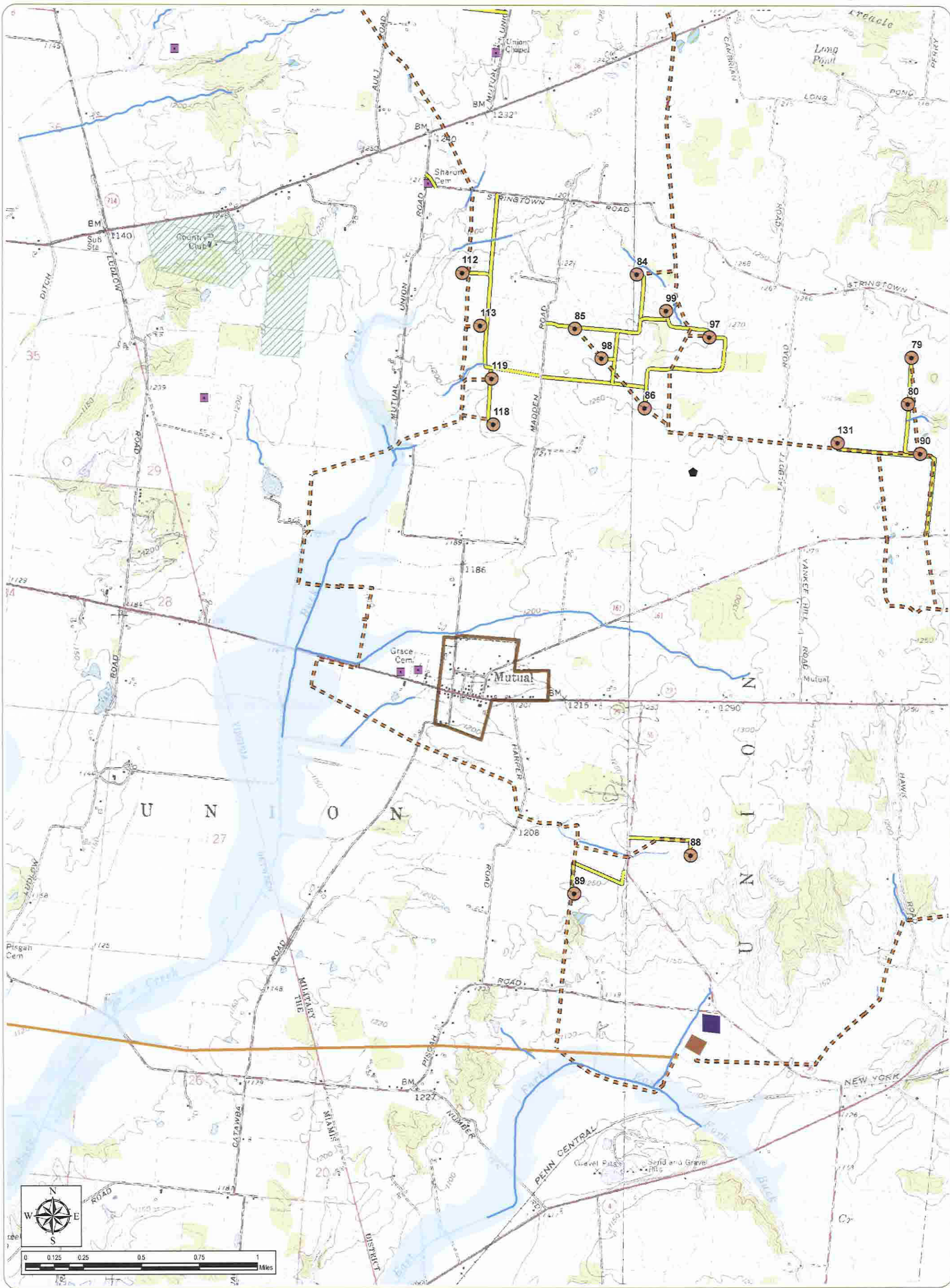
March 2012

- | | | |
|--------------------------|---------------------|-----------------------|
| ▲ Met Tower | ● Water Well | ▨ Delineated Wetland |
| ● Wind Turbine | ● Oil or Gas Well | ▨ Archaeological Site |
| — Overhead Interconnect | ✈ Airport | ▨ Golf Course |
| — Buried Interconnect | H Hospital | ▨ State Wildlife Area |
| — Access Road | L Library | ▨ Local Park |
| — Substation | C Cemetery | ▨ Nature Preserve |
| — Temporary Laydown Yard | P Place of Worship | ▨ College |
| — 5-Mile Radius | S School | ▨ 100-Year Floodplain |
| | — Delineated Stream | ▨ Municipal Boundary |

Notes:
1. Base Map Sheets 1-18: USGS 1:24,000 Bellefontaine, East Liberty, Kingscreek, London, Mechanicsburg, Milford Center, New Moorefield, North Lewisburg, Northville, Peoria, Plumwood, South Vienna, Springfield, Urbana East, Urbana West, and Zanesfield Quadrangles.
2. Delineated wetlands and streams provided by Hull & Associates Inc. Facility shapefiles provided by Applicant.
All other features obtained by edr from public databases.
3. Projections: NAD27 UTM Zone 17, NAD83 UTM Zone 17, NAD83 Ohio State Plane North FIPS 3401, and NAD83 Ohio State Plane South FIPS 3402.
4. Map Scale: 1:24,000

everpower

edr
COMPANIES



Buckeye II Wind Farm
 Goshen, Rush, Union, Urbana, and Wayne Townships - Champaign County, Ohio

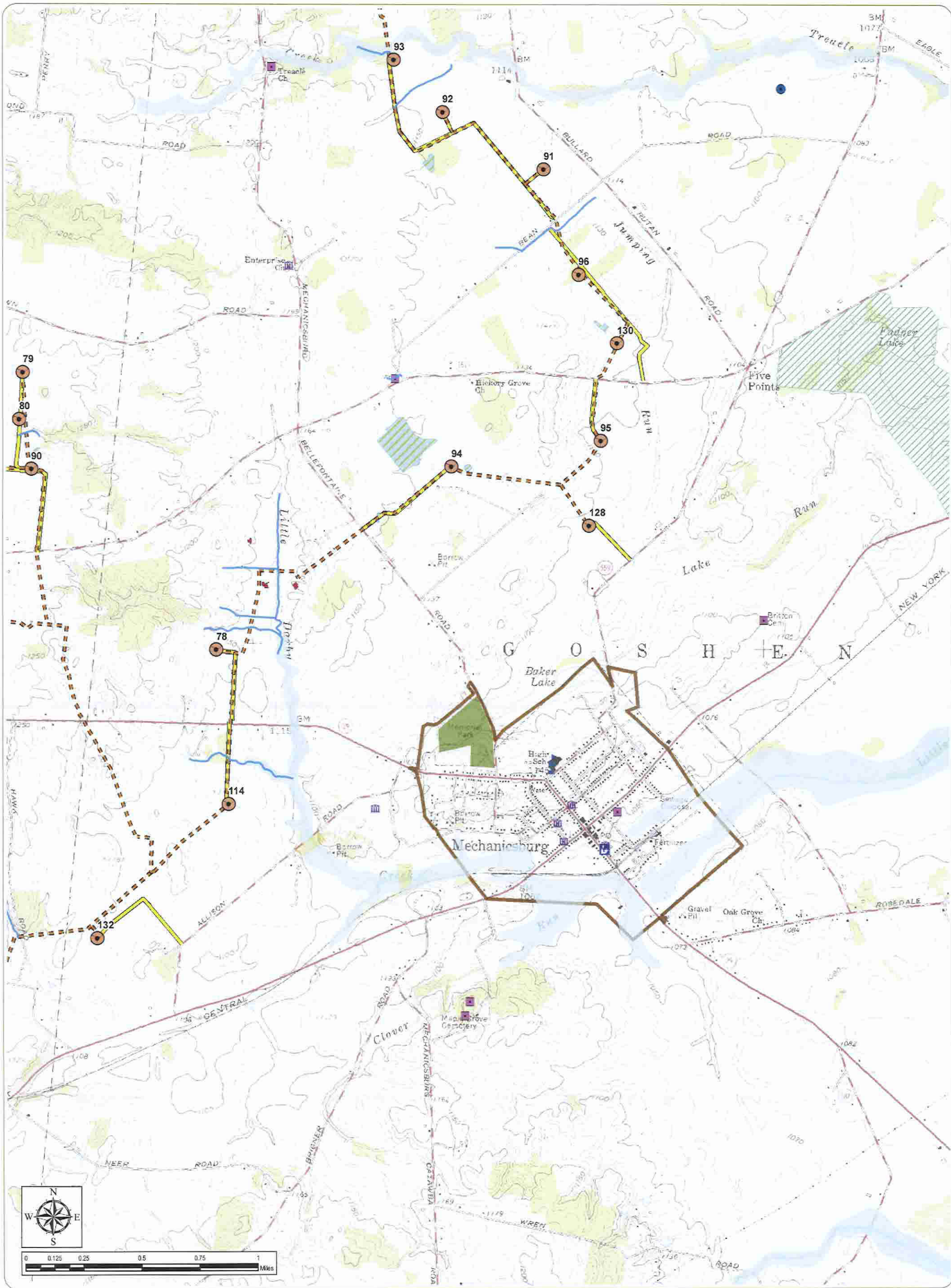
Figure 05-1:
Geography and Topography
 Sheet 11 of 18

March 2012

- | | | |
|--------------------------|---------------------|-----------------------|
| ▲ Met Tower | ● Water Well | ▨ Delineated Wetland |
| ● Wind Turbine | ◆ Oil or Gas Well | ▨ Archaeological Site |
| — Overhead Interconnect | ✈ Airport | ▨ Golf Course |
| — Buried Interconnect | 🏥 Hospital | ▨ State Wildlife Area |
| — Access Road | 📖 Library | ▨ Local Park |
| ■ Substation | ⚰ Cemetery | ▨ Nature Preserve |
| ■ Temporary Laydown Yard | ⛪ Place of Worship | ▨ College |
| ■ 5-Mile Radius | 🎓 School | ▨ 100-Year Floodplain |
| | — Delineated Stream | ▨ Municipal Boundary |

Notes:
 1. Base Map Sheets 1-18: USGS 1:24,000 Bellefontaine, East Liberty, Kingscreek, London, Mechanicsburg, Milford Center, New Moorefield, North Lewisburg, Northville, Peoria, Plumwood, South Vienna, Springfield, Urbana East, Urbana West, and Zanesfield Quadrangles.
 2. Delineated wetlands and streams provided by Hull & Associates Inc. Facility shapefiles provided by Applicant.
 All other features obtained by edr from public databases.
 3. Projections: NAD27 UTM Zone 17, NAD83 UTM Zone 17, NAD83 Ohio State Plane North FIPS 3401, and NAD83 Ohio State Plane South FIPS 3402.
 4. Map Scale: 1:24,000





Buckeye II Wind Farm

Goshen, Rush, Union, Urbana, and Wayne Townships - Champaign County, Ohio

Figure 05-1: Geography and Topography

Sheet 12 of 18

March 2012

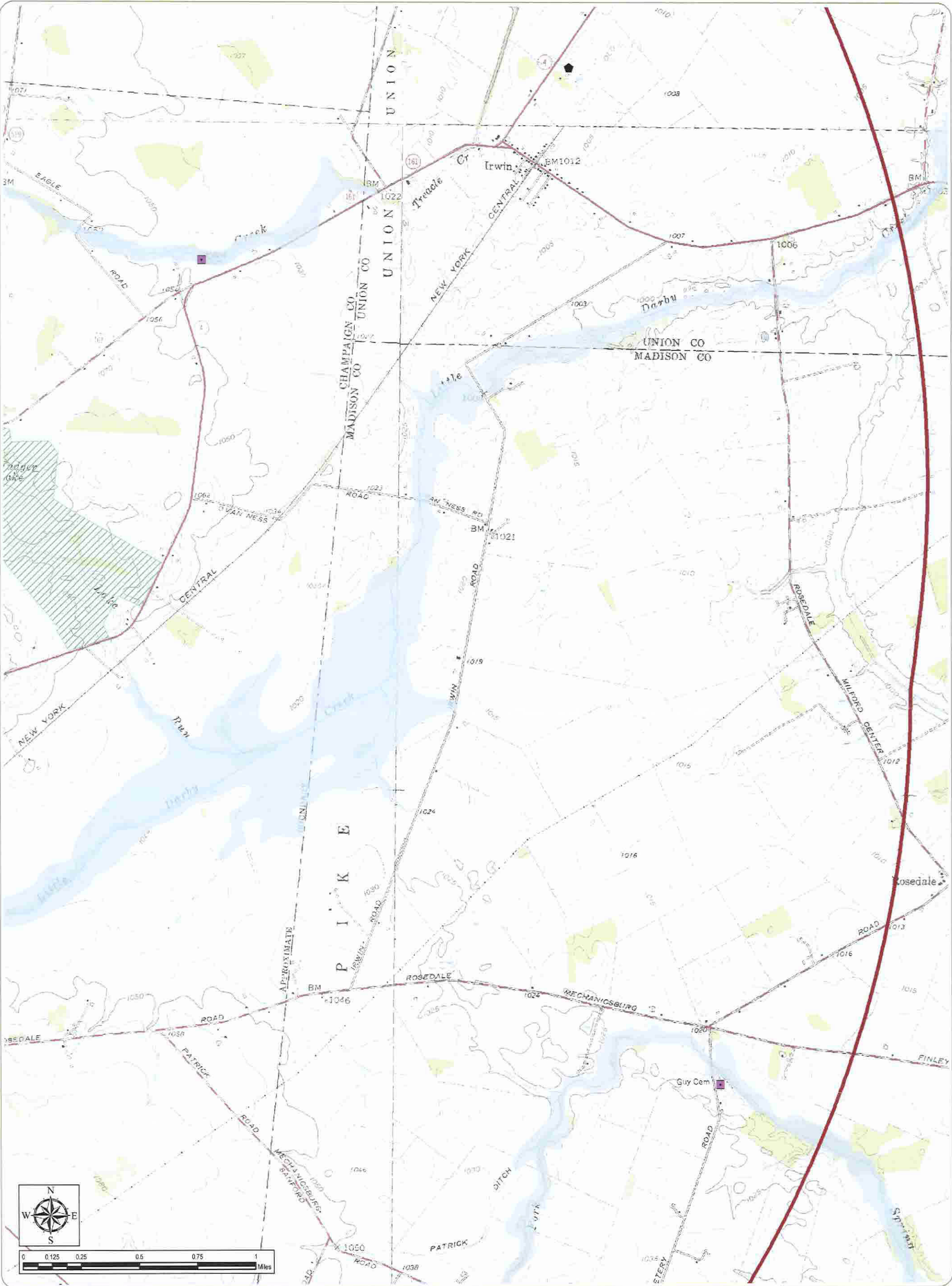
- | | | |
|--------------------------|---------------------|-----------------------|
| ▲ Met Tower | ● Water Well | ▨ Delineated Wetland |
| ○ Wind Turbine | ◆ Oil or Gas Well | ▨ Archaeological Site |
| — Overhead Interconnect | ✈ Airport | ▨ Golf Course |
| - - Buried Interconnect | H Hospital | ▨ State Wildlife Area |
| — Access Road | L Library | ▨ Local Park |
| ■ Substation | C Cemetery | ▨ Nature Preserve |
| ■ Temporary Laydown Yard | P Place of Worship | ▨ College |
| ■ 5-Mile Radius | S School | ▨ 100-Year Floodplain |
| | — Delineated Stream | ▨ Municipal Boundary |

Notes:

1. Base Map Sheets 1-18: USGS 1:24,000 Bellefontaine, East Liberty, Kingscreek, London, Mechanicsburg, Milford Center, New Moorefield, North Lewisburg, Northville, Peoria, Plumwood, South Vienna, Springfield, Urbana East, Urbana West, and Zanesfield Quadrangles.
2. Delineated wetlands and streams provided by Hull & Associates Inc. Facility shapefiles provided by Applicant. All other features obtained by edr from public databases.
3. Projections: NAD27 UTM Zone 17, NAD83 UTM Zone 17, NAD83 Ohio State Plane North FIPS 3401, and NAD83 Ohio State Plane South FIPS 3402.
4. Map Scale: 1:24,000

everpower





Buckeye II Wind Farm
Goshen, Rush, Union, Urbana, and Wayne
Townships - Champaign County, Ohio

Figure 05-1:
Geography and Topography
Sheet 13 of 18

March 2012

- | | | |
|--------------------------|---------------------|-----------------------|
| ▲ Met Tower | ● Water Well | ▨ Delineated Wetland |
| ● Wind Turbine | ◆ Oil or Gas Well | ▨ Archaeological Site |
| — Overhead Interconnect | ✈ Airport | ▨ Golf Course |
| — Buried Interconnect | 🏥 Hospital | ▨ State Wildlife Area |
| — Access Road | 📖 Library | ▨ Local Park |
| — Substation | ⚰ Cemetery | ▨ Nature Preserve |
| — Temporary Laydown Yard | ⛪ Place of Worship | ▨ College |
| — 5-Mile Radius | 🎓 School | ▨ 100-Year Floodplain |
| | — Delineated Stream | ▨ Municipal Boundary |

Notes:
1. Base Map Sheets 1-18: USGS 1:24,000 Bellefontaine, East Liberty, Kingscreek, London, Mechanicsburg, Milford Center, New Moorefield, North Lewisburg, Northville, Peoria, Plumwood, South Vienna, Springfield, Urbana East, Urbana West, and Zanesfield Quadrangles.
2. Delineated wetlands and streams provided by Hull & Associates Inc. Facility shapefiles provided by Applicant.
All other features obtained by edr from public databases.
3. Projections: NAD27 UTM Zone 17, NAD83 UTM Zone 17, NAD83 Ohio State Plane North FIPS 3401, and NAD83 Ohio State Plane South FIPS 3402.
4. Map Scale: 1:24,000



Buckeye II Wind Farm
Goshen, Rush, Union, Urbana, and Wayne Townships - Champaign County, Ohio

Figure 05-1:
Geography and Topography
Sheet 14 of 18

- | | | |
|--------------------------|---------------------|-----------------------|
| ▲ Met Tower | ● Water Well | ▨ Delineated Wetland |
| ○ Wind Turbine | ● Oil or Gas Well | ▨ Archaeological Site |
| — Overhead Interconnect | ✈ Airport | ▨ Golf Course |
| — Buried Interconnect | 🏥 Hospital | ▨ State Wildlife Area |
| — Access Road | 📖 Library | ▨ Local Park |
| — Substation | ⚰ Cemetery | ▨ Nature Preserve |
| — Temporary Laydown Yard | ⛪ Place of Worship | ▨ College |
| — 5-Mile Radius | 🎓 School | ▨ 100-Year Floodplain |
| | — Delineated Stream | ▨ Municipal Boundary |

Notes:
1. Base Map Sheets 1-18: USGS 1:24,000 Bellefontaine, East Liberty, Kingscreek, London, Mechanicsburg, Milford Center, New Moorefield, North Lewisburg, Northville, Peoria, Plumwood, South Vienna, Springfield, Urbana East, Urbana West, and Zanesfield Quadrangles.
2. Delineated wetlands and streams provided by Applicant.
3. Projections: NAD27 UTM Zone 17, NAD83 UTM Zone 17, NAD83 Ohio State Plane North FIPS 3401, and NAD83 Ohio State Plane South FIPS 3402.
4. Map Scale: 1:24,000

everpower



COMPANIES



Buckeye II Wind Farm

Goshen, Rush, Union, Urbana, and Wayne Townships - Champaign County, Ohio

Figure 05-1:
Geography and Topography

Sheet 15 of 18

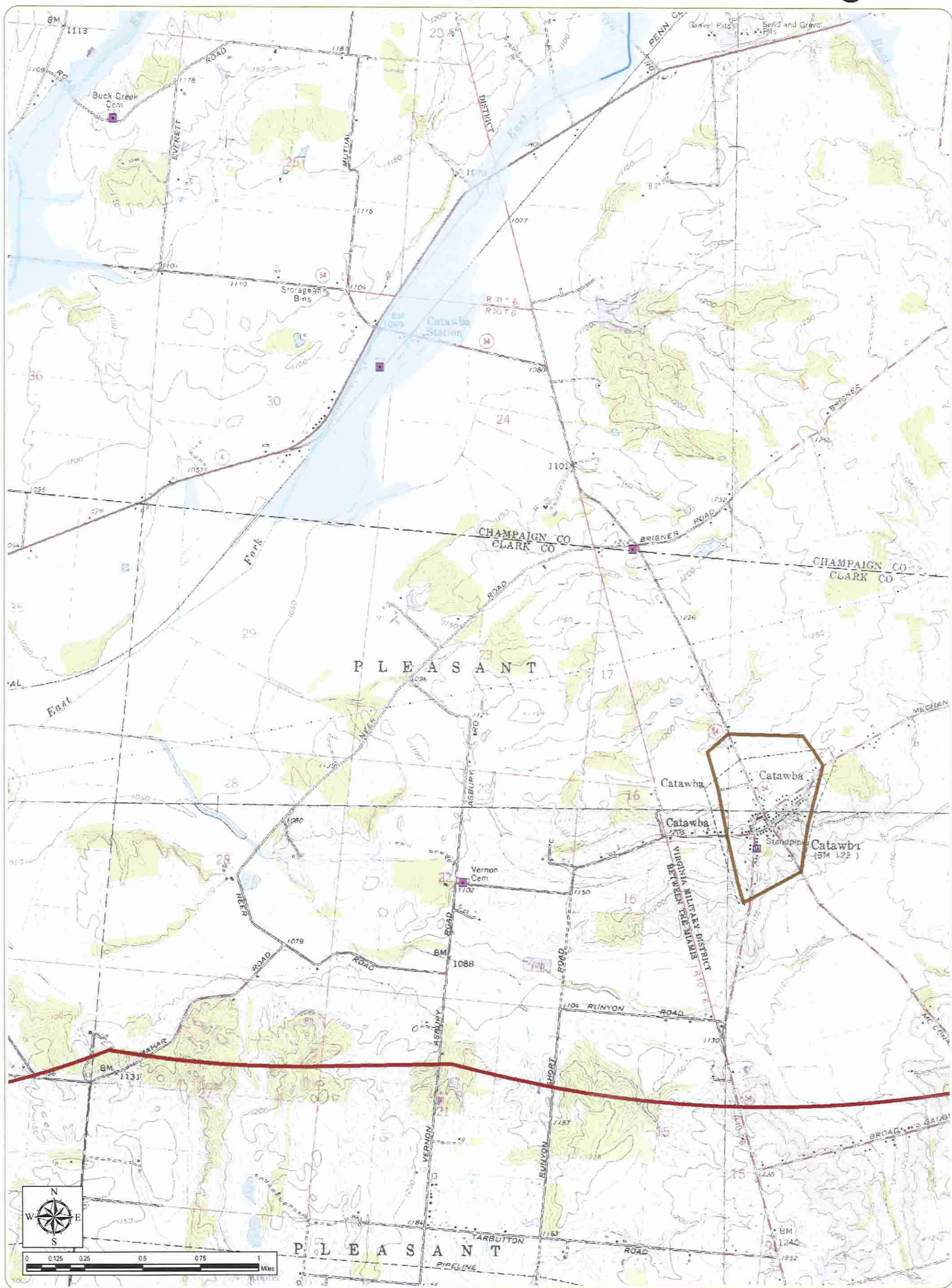
March 2012

- | | | |
|--------------------------|---------------------|-----------------------|
| ▲ Met Tower | ● Water Well | ▨ Delineated Wetland |
| ○ Wind Turbine | ● Oil or Gas Well | ▨ Archaeological Site |
| — Overhead Interconnect | ✈ Airport | ▨ Golf Course |
| — Buried Interconnect | 🏥 Hospital | ▨ State Wildlife Area |
| — Access Road | 📖 Library | ▨ Local Park |
| — Substation | ☠ Cemetery | ▨ Nature Preserve |
| — Temporary Laydown Yard | 🕌 Place of Worship | ▨ College |
| ▭ 5-Mile Radius | 🎓 School | ▨ 100-Year Floodplain |
| | — Delineated Stream | ▨ Municipal Boundary |

- Notes:
1. Base Map Sheets 1-18: USGS 1:24,000 Bellefontaine, East Liberty, Kingscreek, London, Mechanicsburg, Milford Center, New Moorefield, North Lewisburg, Northville, Peoria, Plumwood, South Vienna, Springfield, Urbana East, Urbana West, and Zanesfield Quadrangles.
 2. Delineated wetlands and streams provided by Hull & Associates Inc. Facility shapefiles provided by Applicant. All other features obtained by edr from public databases.
 3. Projections: NAD27 UTM Zone 17, NAD83 UTM Zone 17, NAD83 Ohio State Plane North FIPS 3401, and NAD83 Ohio State Plane South FIPS 3402.
 4. Map Scale: 1:24,000

everpower





Buckeye II Wind Farm

Goshen, Rush, Union, Urbana, and Wayne Townships - Champaign County, Ohio

**Figure 05-1:
Geography and Topography**

Sheet 16 of 18

March 2012

- | | | |
|--------------------------|---------------------|-----------------------|
| ▲ Met Tower | ● Water Well | ▨ Delineated Wetland |
| ⊙ Wind Turbine | ⬢ Oil or Gas Well | ▨ Archaeological Site |
| — Overhead Interconnect | ✈ Airport | ▨ Golf Course |
| — Buried Interconnect | 🏥 Hospital | ▨ State Wildlife Area |
| — Access Road | 📖 Library | ▨ Local Park |
| — Substation | ⚰ Cemetery | ▨ Nature Preserve |
| — Temporary Laydown Yard | 🕌 Place of Worship | ▨ College |
| — 5-Mile Radius | 🎓 School | ▨ 100-Year Floodplain |
| | — Delineated Stream | ▨ Municipal Boundary |

Notes:

1. Base Map Sheets 1-18: USGS 1:24,000 Bellefontaine, East Liberty, Kingscreek, London, Mechanicsburg, Milford Center, New Moorefield, North Lewisburg, Northville, Peoria, Plumwood, South Vienna, Springfield, Urbana East, Urbana West, and Zanesfield Quadrangles.
2. Delineated wetlands and streams provided by Hull & Associates Inc. Facility shapefiles provided by Applicant. All other features obtained by edr from public databases.
3. Projections: NAD27 UTM Zone 17, NAD83 UTM Zone 17, NAD83 Ohio State Plane North FIPS 3401, and NAD83 Ohio State Plane South FIPS 3402.
4. Map Scale: 1:24,000

everpower



This foregoing document was electronically filed with the Public Utilities

Commission of Ohio Docketing Information System on

5/15/2012 3:05:41 PM

in

Case No(s). 12-0160-EL-BGN

Summary: Application Application of Champaign Wind LLC, Vol I, Part 2 electronically filed by Mr. Michael J. Settineri on behalf of Champaign Wind LLC