



Bricker & Eckler
ATTORNEYS AT LAW

COLUMBUS | CLEVELAND
CINCINNATI-DAYTON

BRICKER & ECKLER LLP
100 South Third Street
Columbus, Ohio 43215-4291
MAIN: 614.227.2300
FAX: 614.227.2390

www.bricker.com
info@bricker.com

Sally W. Bloomfield
614.227.2368
sbloomfield@bricker.com

May 13, 2011

Via Electronic Filing

Ms. Betty McCauly
Administration/Docketing
Ohio Power Siting Board
180 East Broad Street, 11th Floor
Columbus, Ohio 43215-3793

**Re: Dominion East Ohio Gas, Countywide Landfill
Case No. 09-1960-GA-BLN**

Dear Ms. McCauly:

In compliance with the Staff Investigation Report and Recommendation ("Staff Report") No. 7, Dominion East Ohio Gas ("DEO") submits for Staff review and approval the following plan for removal or abandonment-in-place of the existing pipeline:

The project will change the location of a major portion of the existing 20-inch High Pressure mainline L#6123 that traverses the Countywide Landfill. Approximately 2994 feet of existing 20-inch mainline will be cut, purged and abandoned in place as noted on pages 3 and 4 of the attached drawings. The new location of the replacement pipeline will allow Countywide to be able to use additional property for landfill activity. DEO contractor shall make the south tie in into the existing mainline at station 0+00 as shown on page 2 of 4 of the attached drawings. The new mainline shall be routed as shown to the eastside of the property. The new mainline will eventually be installed to the west to tie back into the existing mainline at station 70+00, as shown on page 3 of 4 of the attached drawings.

With the filing of this plan, DEO has complied with all the Staff's recommendations as set forth in the Staff Report. DEO plans to begin construction of this project approximately June 13, 2011.

If you have any questions, please call me at the number listed above.

Sincerely,

Sally W. Bloomfield

Attachments

cc: Don Rostofer (w/Attachments)
Jim O'Dell (w/Attachments)

MATERIAL LIST

Quantity	Description	Unit Code
1	PIPE 24" DIA. X 120' LONG	4200008
1	MANHOLE 24" DIA. X 48" DEEP	4200009
1	APRON 24" X 48"	4200010
1	APRON 24" X 48"	4200011
1	APRON 24" X 48"	4200012
1	APRON 24" X 48"	4200013
1	APRON 24" X 48"	4200014
1	APRON 24" X 48"	4200015
1	APRON 24" X 48"	4200016
1	APRON 24" X 48"	4200017
1	APRON 24" X 48"	4200018
1	APRON 24" X 48"	4200019
1	APRON 24" X 48"	4200020
1	APRON 24" X 48"	4200021
1	APRON 24" X 48"	4200022
1	APRON 24" X 48"	4200023
1	APRON 24" X 48"	4200024
1	APRON 24" X 48"	4200025
1	APRON 24" X 48"	4200026
1	APRON 24" X 48"	4200027
1	APRON 24" X 48"	4200028
1	APRON 24" X 48"	4200029
1	APRON 24" X 48"	4200030
1	APRON 24" X 48"	4200031
1	APRON 24" X 48"	4200032
1	APRON 24" X 48"	4200033
1	APRON 24" X 48"	4200034
1	APRON 24" X 48"	4200035
1	APRON 24" X 48"	4200036
1	APRON 24" X 48"	4200037
1	APRON 24" X 48"	4200038
1	APRON 24" X 48"	4200039
1	APRON 24" X 48"	4200040
1	APRON 24" X 48"	4200041
1	APRON 24" X 48"	4200042
1	APRON 24" X 48"	4200043
1	APRON 24" X 48"	4200044
1	APRON 24" X 48"	4200045
1	APRON 24" X 48"	4200046
1	APRON 24" X 48"	4200047
1	APRON 24" X 48"	4200048
1	APRON 24" X 48"	4200049
1	APRON 24" X 48"	4200050
1	APRON 24" X 48"	4200051
1	APRON 24" X 48"	4200052
1	APRON 24" X 48"	4200053
1	APRON 24" X 48"	4200054
1	APRON 24" X 48"	4200055
1	APRON 24" X 48"	4200056
1	APRON 24" X 48"	4200057
1	APRON 24" X 48"	4200058
1	APRON 24" X 48"	4200059
1	APRON 24" X 48"	4200060
1	APRON 24" X 48"	4200061
1	APRON 24" X 48"	4200062
1	APRON 24" X 48"	4200063
1	APRON 24" X 48"	4200064
1	APRON 24" X 48"	4200065
1	APRON 24" X 48"	4200066
1	APRON 24" X 48"	4200067
1	APRON 24" X 48"	4200068
1	APRON 24" X 48"	4200069
1	APRON 24" X 48"	4200070
1	APRON 24" X 48"	4200071
1	APRON 24" X 48"	4200072
1	APRON 24" X 48"	4200073
1	APRON 24" X 48"	4200074
1	APRON 24" X 48"	4200075
1	APRON 24" X 48"	4200076
1	APRON 24" X 48"	4200077
1	APRON 24" X 48"	4200078
1	APRON 24" X 48"	4200079
1	APRON 24" X 48"	4200080
1	APRON 24" X 48"	4200081
1	APRON 24" X 48"	4200082
1	APRON 24" X 48"	4200083
1	APRON 24" X 48"	4200084
1	APRON 24" X 48"	4200085
1	APRON 24" X 48"	4200086
1	APRON 24" X 48"	4200087
1	APRON 24" X 48"	4200088
1	APRON 24" X 48"	4200089
1	APRON 24" X 48"	4200090
1	APRON 24" X 48"	4200091
1	APRON 24" X 48"	4200092
1	APRON 24" X 48"	4200093
1	APRON 24" X 48"	4200094
1	APRON 24" X 48"	4200095
1	APRON 24" X 48"	4200096
1	APRON 24" X 48"	4200097
1	APRON 24" X 48"	4200098
1	APRON 24" X 48"	4200099
1	APRON 24" X 48"	4200100

CONTACTS

PLANNING:
 TRACY HARRIS (P.E. Reg.) - 716-756-4617 (RATHMAN SPELL - 716-756-4760)

ENGINEERING:
 TROY HARRIS - 336-664-8577

LABOR:
 BOB MILANO - 336-664-9419

CONSTRUCTION & INSTALLATION:
 TONY BRADY - 336-476-5146

TRUCKS & EQUIPMENT:
 ROCK HAYWOOD - 336-664-9999

CONTRACTORS & SUBMITTALS:
 MIKE WHITROW - 336-476-5187, LANCE COBBIN - 336-476-5162

CONTRACTOR:
 DAVE CULIP - 336-306-5181

CONTRACTOR INSPECTOR:
 DAVE RICHMOND - 336-664-9483

SURVEY:
 N/A

PROJECT MANAGER:
 MIKE ANTONIS - 336-664-5491

MANAGER/ENGINEER:
 PRICE TIPP STARK COUNTY

ENGINEER:
 MIKE COBBIN - 336-664-9484

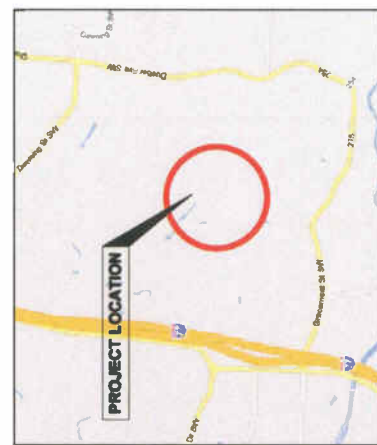
IN CHARGE OF INSPECTION CALL 844-7899
 DOMINION DISPATCH 216-726-9899
 DOMINION CUSTOMER SERVICE 800-368-7987

CONTRACTOR/ENGINEER:
 DAVE CULIP - 336-306-5181
 LANCE COBBIN - 336-476-5162

Dominion®

20" PIPELINE #6123 RELOCATION
COUNTYWIDE RECYCLING & DISPOSAL FACILITY
P#73505

WMIS #3C07276382
RELOCATE 20" L#6123 AROUND COUNTYWIDE
LANDFILL



LOCATION MAP

INDEX OF SHEETS

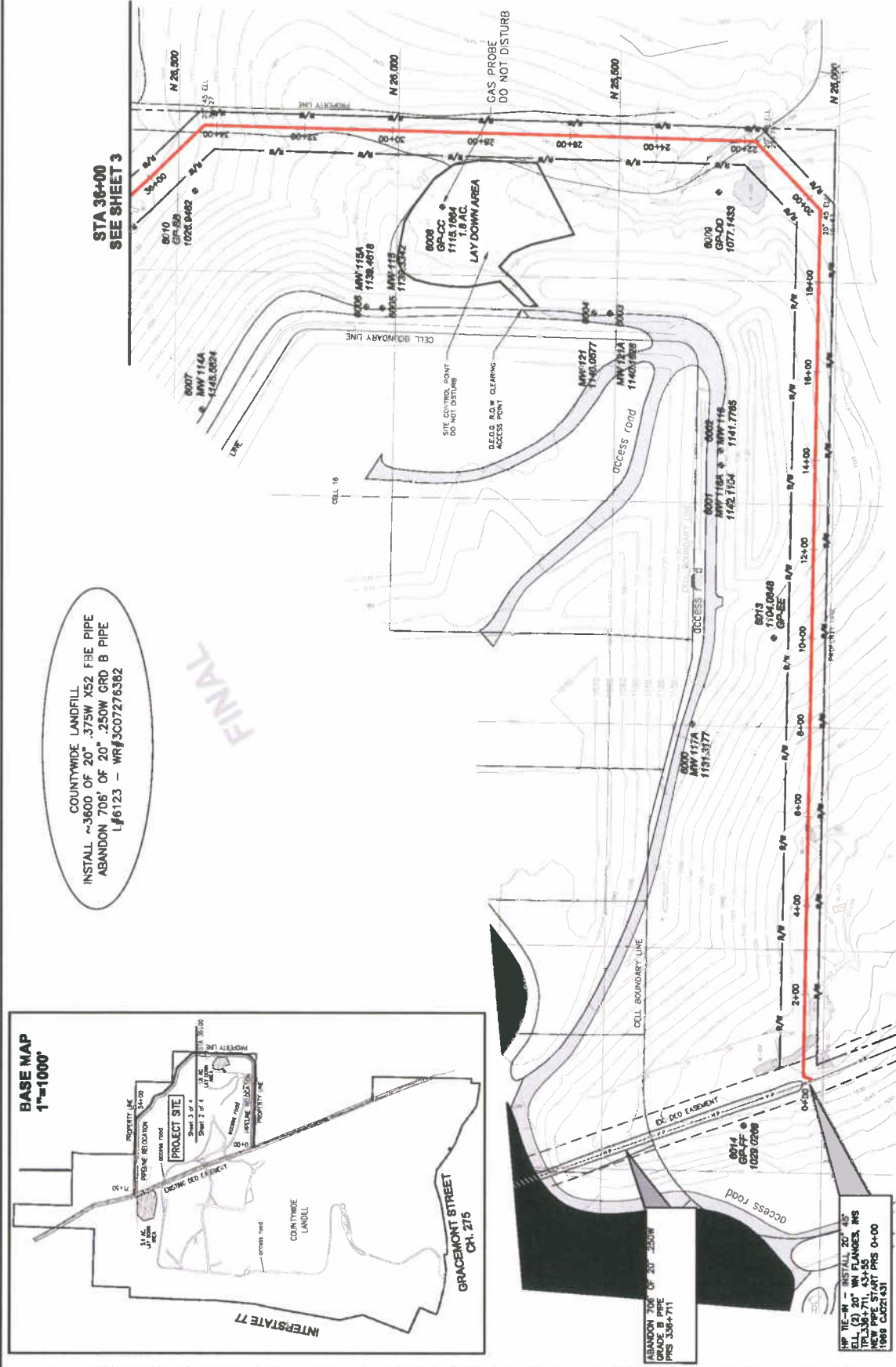
TITLE SHEET	1
PLAN SHEET	2
DETAILS	3
TAKE DOWN PLAN	4

20" LINE #123 TO BE SHUTDOWN, CUT, CAP & ABANDON THE PIPE. Capping existing 20" steel HP main in (2) locations.

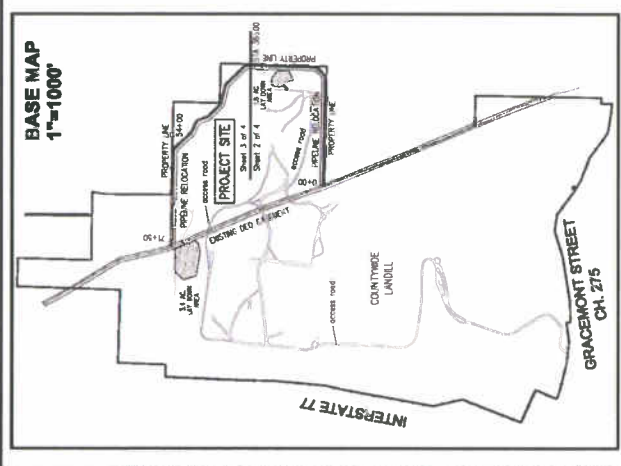
SEE DOMINION RFP FOR GENERAL NOTES & COMPLETE PROJECT SCOPE. RFP SHALL GOVERN ANY DISCREPANCIES.

GENERAL NOTES

- INSPECT & DOCUMENT PIPELINE INSPECTION W/ FORM #721063 (JAN 2002) AS PER D.E.O. S.O.P.
- INSTALL & DOCUMENT TEST POINTS AS PER CORROSION CONTROL INPUT SHEET.
- PURGE, GROUT, CAP AND/OR SEAL ALL ABANDONED LINE AS PER D.E.O. S.O.P.
- ALL PAPERWORK MUST BE COMPLETED & TURNED IN WITHIN FIVE (5) DAYS OF IN-SERVICE DATE.
- NEW GAS LINES AND SERVICES WILL BE INSTALLED AT A DEPTH OF 3'.
- THE CONTRACTOR SHALL FIELD VERIFY THE LOCATION AND DEPTH OF WATER AND SEWER CONNECTIONS WHEN NECESSARY TO AVOID CONFLICTS WHEN BORING.
- 17LB ANODES PLACED EVERY 200'.
- WHERE OPEN CUTTING, THE FOLLOWING RESTORATION REQUIREMENTS APPLY:
 - ROADS AND CURBS - SAW CUT, BACKFILL W/ LHM. RESTORE ROAD AND CURBING TO CITY OF CLEVELAND SPECIFICATIONS.
 - APRONS - SAW CUT, BACKFILL W/ LIMESTONE #904. RESTORE APRONS TO CITY OF CLEVELAND SPECIFICATIONS.
 - SIDEWALKS - SAW CUT, BACKFILL W/ LIMESTONE #904. RESTORE SIDEWALKS TO CITY OF CLEVELAND SPECIFICATIONS.
- CONTRACTOR TO PROVIDE TEMPORARY RESTORATION WITHIN THE CULVERT CONSTRUCTION LIMITS. FINAL RESTORATION WILL BE PERFORMED BY THE CULVERT CONTRACTOR.
- THE CONTRACTOR WILL BE RESPONSIBLE FOR TRAFFIC CONTROL, WHICH WILL BE BID AS A LUMP SUM NOT TO EXCEED. (LITRCONTROL)
- ALL THE WORK ASSOCIATED WITH SERVICE RELOCATION AND TRANSFERRING WILL BE PAID BY ONE PAY ITEM FOR EACH SERVICE (ATTRANSHORT FOR SHORTS) # OF SHORTS * XX (ATTRANLONG FOR LONGS) # OF LONGS * XX



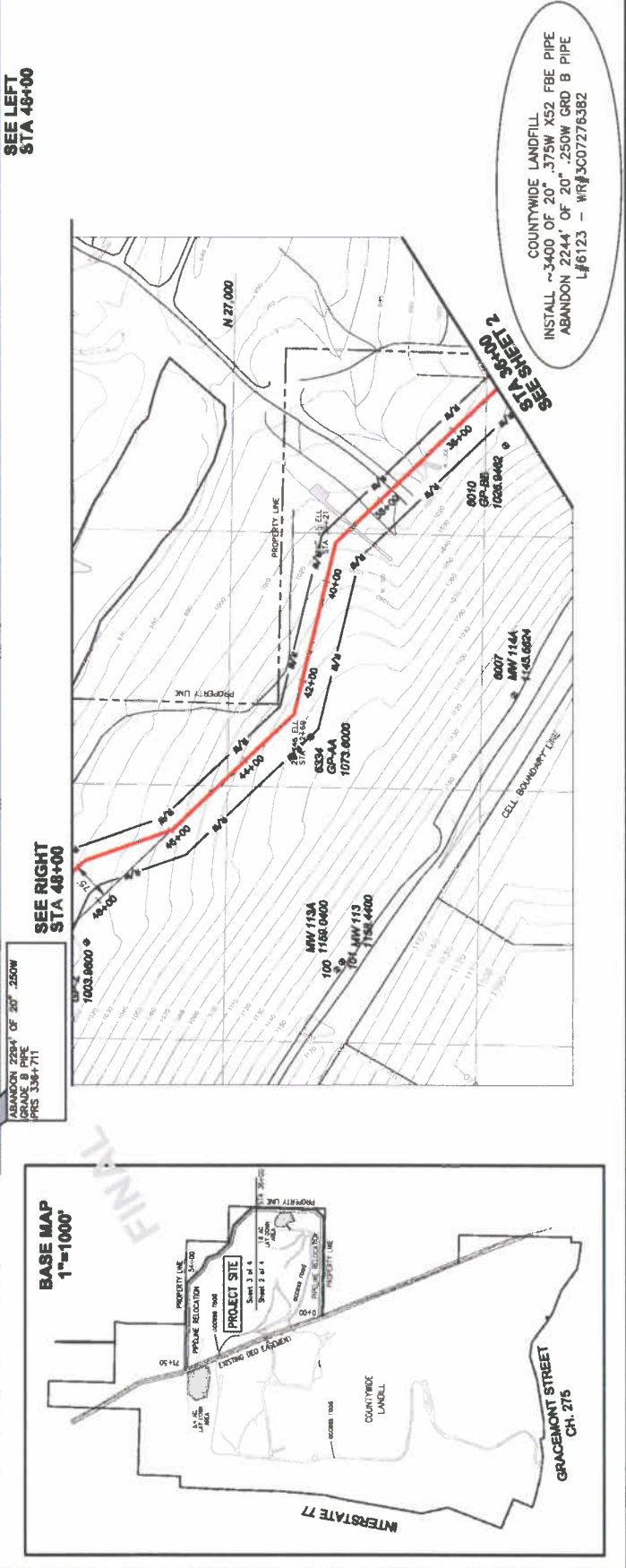
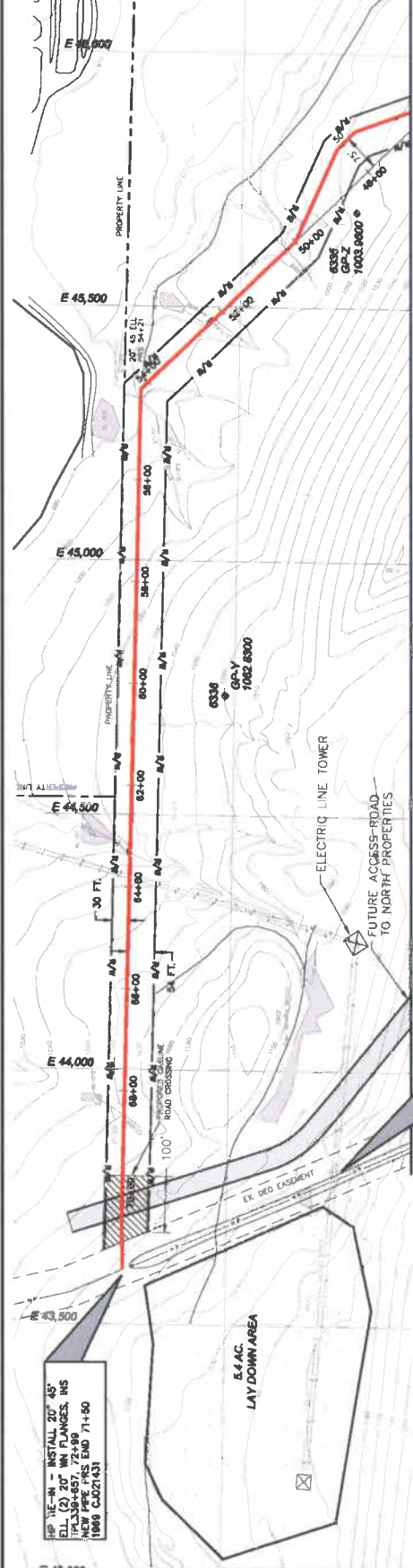
COUNTYWIDE LANDFILL
 INSTALL ~3600' OF 20" .375W X52 FBE PIPE
 ABANDON 708' OF 20" .250W GRD B PIPE
 L#6123 - WR#3C0726392



ABANDON 708' OF 20" .250W
 GRD B PIPE
 PPS 3364-711

HP TIE-IN - INSTALL 20" .375
 FBE (3) 20" W/ FLANGES, PPS
 PPS 3364-711, 63-58
 1868 CAG21431
 PPS 0+00

Source: Dept. S. VARDON - SPRINGFIELD IGA DELIVERY Project; Files P:\2006\Design Drawings\320726392 Countywide Landfill Re-locate State Res. Sewer Date: Dec 15, 2010 8:59am Drawn: mcl0108



SEE LEFT
 STA 48+00

SEE RIGHT
 STA 48+00

ABANDON 2204' OF 20" .250W
 GRADE B PIPE
 PIS 3364-711

SEE SHEET 2
 STA 36+00

SEE SHEET 2
 STA 71+50

SEE SHEET 2
 STA 71+50

SEE SHEET 2
 STA 36+00

SEE SHEET 2
 STA 71+50

SEE SHEET 2
 STA 71+50

SEE SHEET 2
 STA 36+00

SEE SHEET 2
 STA 71+50

SEE SHEET 2
 STA 71+50

SEE SHEET 2
 STA 36+00

SEE SHEET 2
 STA 71+50

SEE SHEET 2
 STA 71+50

SEE SHEET 2
 STA 36+00

SEE SHEET 2
 STA 71+50

SEE SHEET 2
 STA 71+50

SEE SHEET 2
 STA 36+00

SEE SHEET 2
 STA 71+50

SEE SHEET 2
 STA 71+50

SEE SHEET 2
 STA 36+00

SEE SHEET 2
 STA 71+50

SEE SHEET 2
 STA 71+50

SEE SHEET 2
 STA 36+00

SEE SHEET 2
 STA 71+50

SEE SHEET 2
 STA 71+50

SEE SHEET 2
 STA 36+00

SEE SHEET 2
 STA 71+50

SEE SHEET 2
 STA 71+50

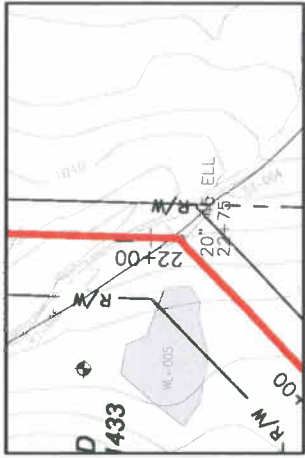
SEE SHEET 2
 STA 36+00

SEE SHEET 2
 STA 71+50

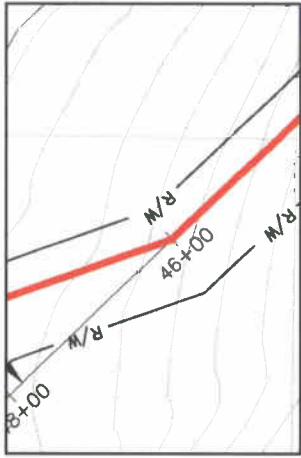
SEE SHEET 2
 STA 71+50

COUNTYWIDE LANDFILL
 INSTALL ~3400 OF 20" .375W X52 FBE PIPE
 ABANDON 2244' OF 20" .250W GRD B PIPE
 L#6123 - WRF#3007276382

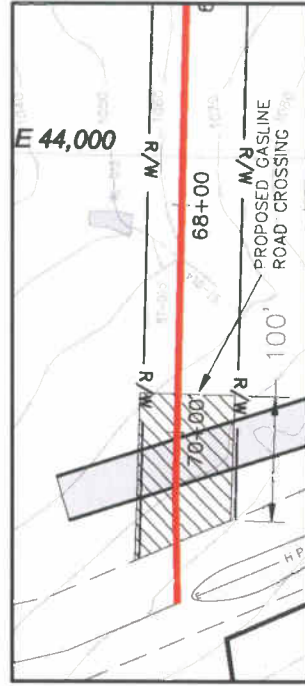




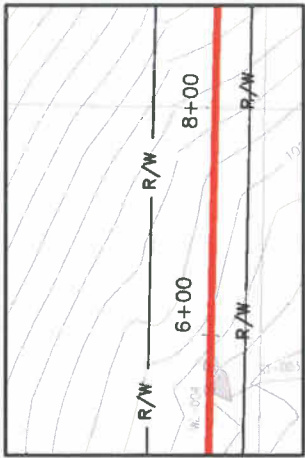
DETAIL "C"



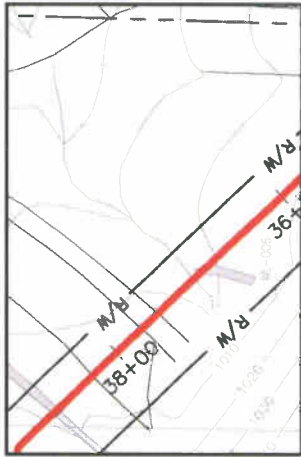
DETAIL "G"



DETAIL "J & K"



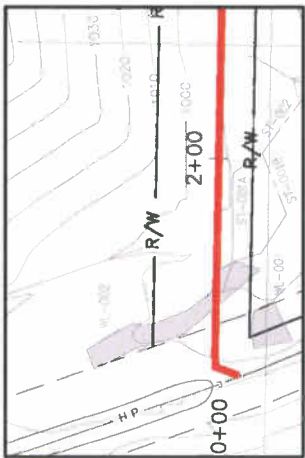
DETAIL "B"



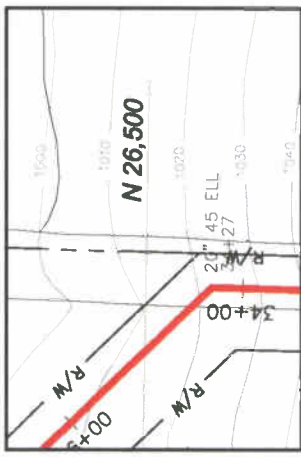
DETAIL "E & F"



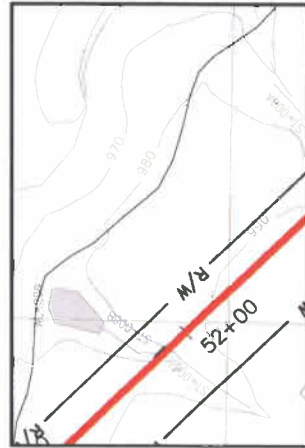
DETAIL "I"



DETAIL "A"



DETAIL "D"



DETAIL "H"

This foregoing document was electronically filed with the Public Utilities

Commission of Ohio Docketing Information System on

5/13/2011 1:51:51 PM

in

Case No(s). 09-1960-GA-BLN

Summary: Correspondence Submitting Plan for Staff Approval electronically filed by Teresa Orahod on behalf of Dominion East Ohio Gas