

FILE

12

PUCO EXHIBIT FILING

Date of Hearing: 10/28/2010

Case No. 10-1250-RR-LNC

PUCO Case Caption: In the Matter of a
Request for an Exemption from
Stopping for School Buses & other
Motor Vehicles at the Raymond Road
Grade Crossing in Union County, Ohio

List of exhibits being filed:

Gill 1 & 2

RECEIVED-DOCKETING DIV

2010 NOV 17 PM 1:15

PUCO

This is to certify that the images appearing are an accurate and complete reproduction of a case file document delivered in the regular course of business.
Technician Arnd Date Processed 11/17/10

Reporter's Signature: Julianne Hensel
Date Submitted: 11/17/10

BEFORE THE PUBLIC UTILITIES COMMISSION OF OHIO

- - -

In the Matter of a Request :
For an Exemption From :
Stopping for School Buses :
and Other Motor Vehicles : Case No. 10-1250-RR-UNC
at the Raymond Road Grade :
Crossing (903-791K), in :
Union County, Ohio. :

- - -

PROCEEDINGS

before Mr. Kerry Sheets, Hearing Examiner, at the
Union County Office Building, 233 West 6th Street,
Auditorium, Marysville, Ohio, called at 1:30 p.m. on
Thursday, October 28, 2010.

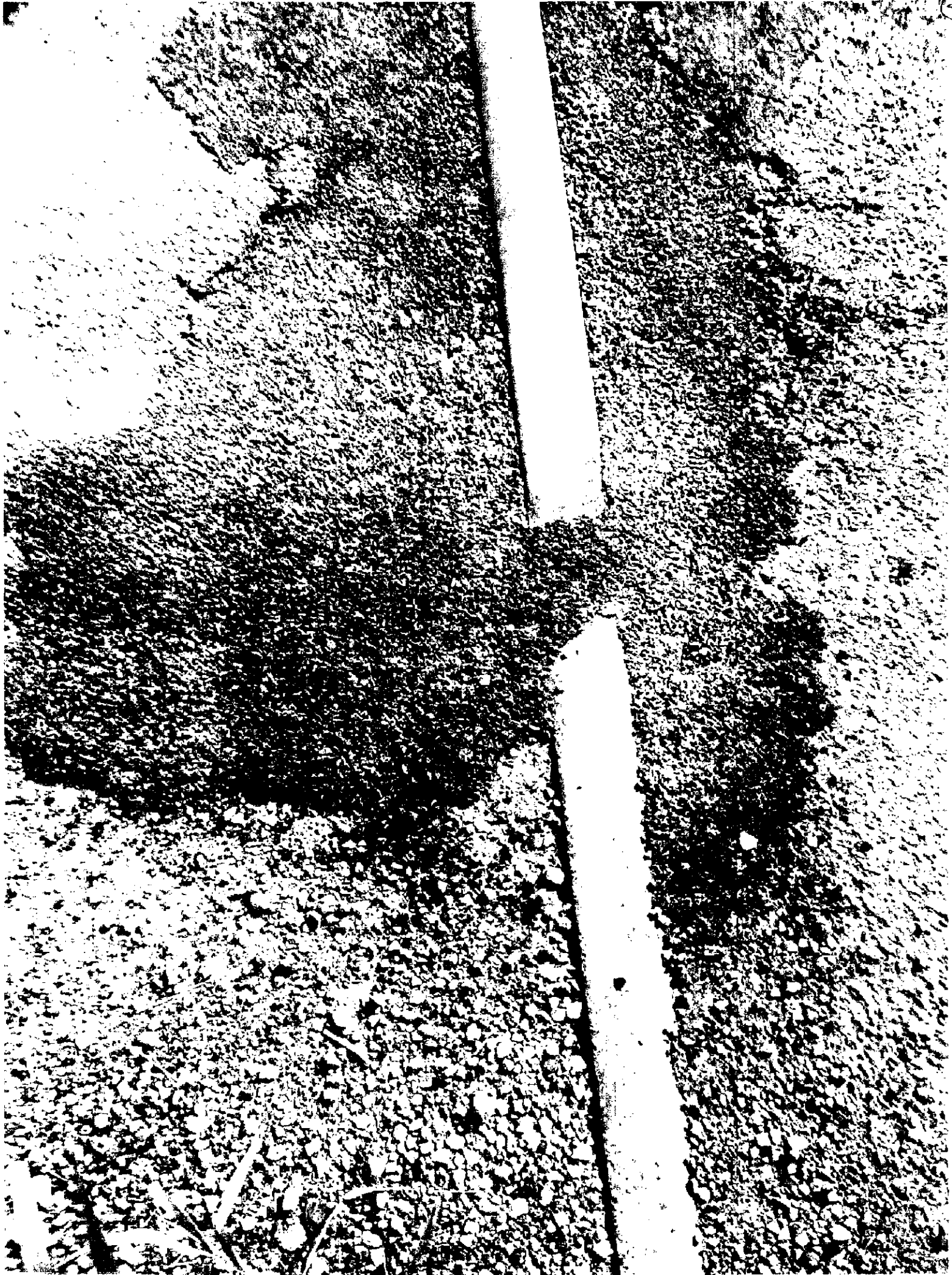
- - -

ARMSTRONG & OKEY, INC.
222 East Town Street, 2nd Floor
Columbus, Ohio 43215
(614) 224-9481 - (800) 223-9481
Fax - (614) 224-5724

- - -



CHY Ev 1 (Eight pictures)





TRANSPORTATION

VEHICLE BLOCKING

EMERGENCY

TO REPORT STALLED OR OTHER EMERGENCY
CROSSING OR OTHER EMERGENCY

LOCATED AT

BT 9720

MILE POST

CSX

CALL

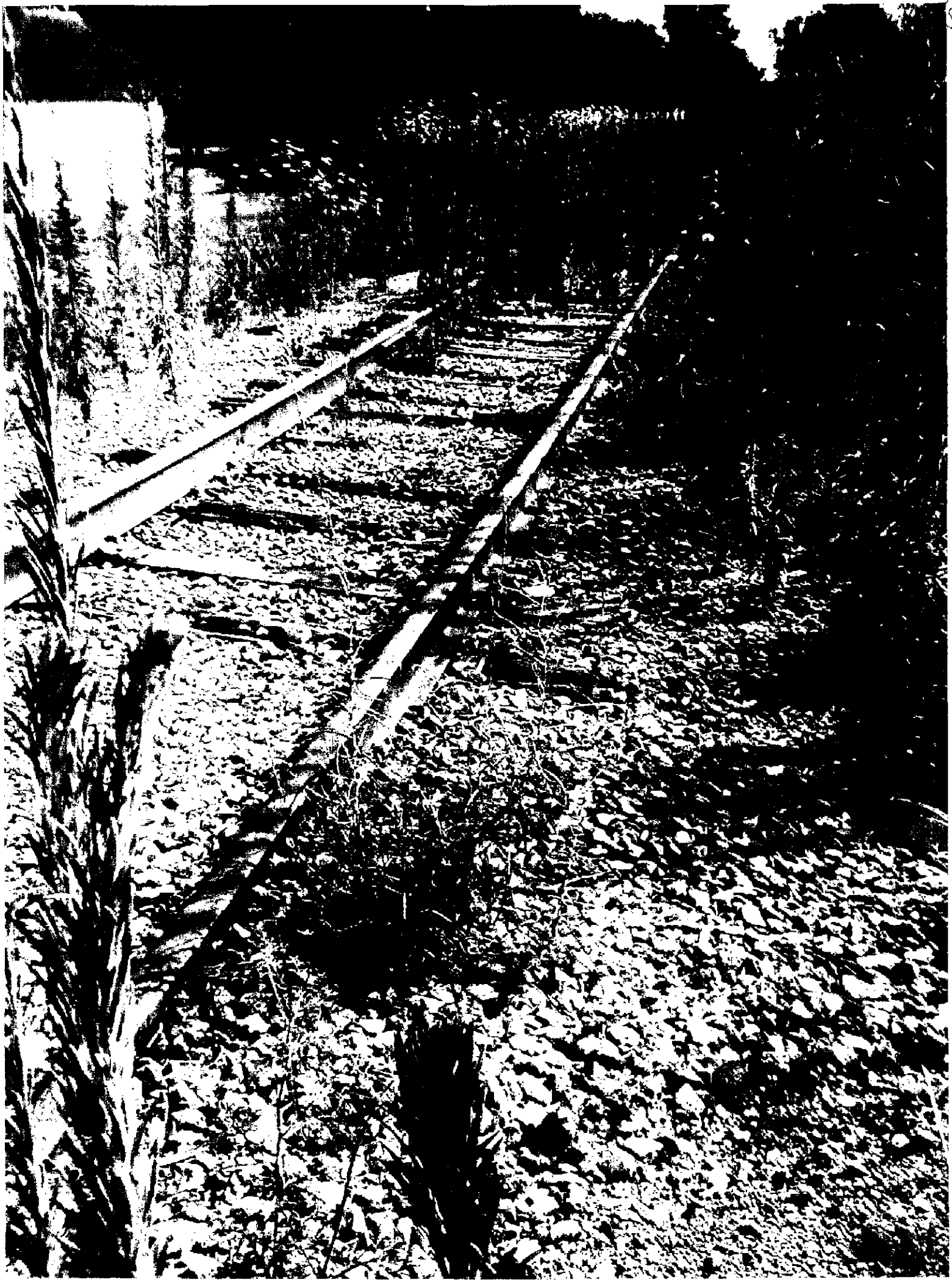
1-800-232-0144

REFER TO CROSSING

9720 BT

CSX









the service door, and listen and look in both directions along the track or tracks for approaching engines, trains, or train cars.

- (b) For improved vision and hearing, a window at the driver's left shall be opened and radios and other noisy equipment (fans, etc.) shall be turned off upon approaching the crossing and remain off until the bus has cleared the crossing.
 - (c) The school bus driver shall shift the bus into gear, look and listen, close the service door, release the parking brake, and drive across the tracks in an appropriate gear without shifting.
 - (d) After a train has passed the crossing, the bus driver shall not drive the bus onto any tracks until the driver is certain that no train, hidden by the first train, is approaching on an adjacent track.
 - (e) Crossing when flashing or audible signals malfunction is only permitted when authorized in accordance with section 4511.62 of the Revised Code.
 - (f) The bus driver must never assume that automatic signals or other devices are completely reliable.
- (2) Weather conditions - during wet, stormy or foggy weather, before placing part of the bus on the tracks, the driver must know that the crossing can be made in safety.
- (3) Behavior of passengers at railroad crossings - when any school bus is stopped for any railroad track, all passengers must be silent until the crossing is completed. A signal for silence shall be given by the school bus driver approximately three hundred feet from the crossing.
- (4) School bus railroad crossing procedures
- (a) Traffic checks shall be made upon the approach to the railroad crossing so that the driver can observe traffic and reduce speed far enough in advance of the stop to avoid trapping other motorists in panic stops or rear-end collisions with the bus. On multiple roadways, all stops must be made in the far right lane whenever possible and practical.
 - (b) At approximately three hundred feet from the railroad crossing, the driver must signal the passengers for silence, turn off noisy equipment (fans, etc.), turn off the warning lamp master switch if necessary, and actuate the strobe light, if available and if conditions warrant.
 - (c) Actuate the hazard lights at least one hundred feet from the railroad crossing, unless prohibited by local ordinance. No other signs or signals, except the strobe light, will be actuated from the bus while stopped or stopping at the railroad crossing.

- (d) Open the driver's window
- (e) Stop the bus within fifty feet from the nearest rail. Set the parking brake.
- (f) Shift the gear lever into neutral, either standard or automatic.
- (g) Open the service door and look in both directions for an approaching train.
- (h) Shift into the proper gear to move forward safely and there is sufficient clearance of the railroad crossing.
- (i) Close the door, continue to look for approaching cars in hazardous proximity, and listen for audible signals.
- (j) Release parking brake and move forward when safe to do so.
- (k) When the bus has safely cleared the crossing, approximately fifty feet from the crossing:
 - (i) Turn off the hazard lights.
 - (ii) Close window, if desired.
 - (iii) Turn on warning lamp master switch, if needed.
 - (iv) Turn on radios.
- (l) Traffic checks shall be made upon the approach to the railroad crossing to check for motorists trying to pass the bus at the railroad crossing.

(C) School bus turn-around

- (1) Whenever possible, the bus shall stop at least five hundred feet in both directions from the intersection.
- (2) Whenever possible, turn-arounds shall be made at intersections where the vehicle is not backing.
- (3) Four-way hazard lights shall be used in accordance with local ordinance.
- (4) The driver shall sound the horn to warn of the audible signal while backing.

Pupil Transportation Operation and
Safety Rules – September 2008

and look in both directions along
the crossing for engines, trains, or train cars.

When approaching a window at the driver's left
and other noisy equipment (fans,
approaching the crossing and
cleared the crossing.

Shift the bus into gear, look and
release the parking brake, and
appropriate gear without shifting.

When crossing, the bus driver shall not
stop until the driver is certain that
no train, is approaching on an

Audible signals malfunction is
detected in accordance with section

Assume that automatic signals or
are not reliable.

In stormy or foggy weather, before
crossings, the driver must know that
the crossing is clear.

At railroad crossings – when any school
bus is backing, all passengers must be silent
and a signal for silence shall be given
at least one hundred feet from

Procedures

Upon the approach to the
crossing, the driver can observe traffic and
advance of the stop to avoid
panic stops or rear-end collisions
and, if necessary, all stops must be made
as early as possible and practical.

At least one hundred feet from the railroad
crossing, signal the passengers for silence,
(fans, etc.), turn off the warning
lights, and actuate the strobe light,
if warranted.

At least one hundred feet from the
crossing, the driver shall not be
prohibited by local ordinance. No
until the strobe light, will be actuated
or stopping at the railroad crossing.

- (d) Open the driver's window just prior to stopping.
- (e) Stop the bus within fifty feet and not less than fifteen feet
from the nearest rail. Set the parking brake.
- (f) Shift the gear lever into neutral. This applies to buses with
either standard or automatic transmission.
- (g) Open the service door and look and listen not less than twice
in both directions for an approaching train, engines, or train
cars.
- (h) Shift into the proper gear when the crossing can be made
safely and there is sufficient space on the other side of the
railroad crossing.
- (i) Close the door, continue to look for trains, engines, or train
cars in hazardous proximity of the bus, and listen for any
audible signals.
- (j) Release parking brake and proceed across the railroad
crossing when safe to do so. Do not shift gears while crossing.
- (k) When the bus has safely cleared the last rail and is
approximately fifty feet from the crossing:
 - (i) Turn off the hazard lights and strobe light;
 - (ii) Close window, if desired;
 - (iii) Turn on warning lamp master switch and heater fans,
if needed;
 - (iv) Turn on radios.
- (l) Traffic checks shall be made to identify any hazards by
motorists trying to pass the bus while completing the
railroad crossing.

(C) School bus turn-around

- (1) Whenever possible, the bus shall be clearly visible to the other
motorists five hundred feet in both directions.
- (2) Whenever possible, turn-arounds should not be scheduled at
intersections where the vehicle must cross a lane of traffic while
backing.
- (3) Four-way hazard lights shall be actuated unless prohibited by
local ordinance.
- (4) The driver shall sound the horn twice before backing or have an
audible signal while backing.