


## CONSULTANTS

# GRANGER



## BUILDING EXPANSION

	9/16/02	GENERAL REVISION
	06/27/02	UNGROUNDING WYE
	06/04/02	ADDED GENERATOR 5
	10/11/00	AS BUILT
MARK	DATE	DESCRIPTION

PROJECT NO: \_\_\_\_\_ SEAL \_\_\_\_\_

Grand Blanc Gen Station Expon

CAD DWG FILE: \_\_\_\_\_

GBLC-E2

DRAWN BY: \_\_\_\_\_

M. LYYSKI

CHECKED BY: \_\_\_\_\_

C. CODER

APPROVED BY: \_\_\_\_\_

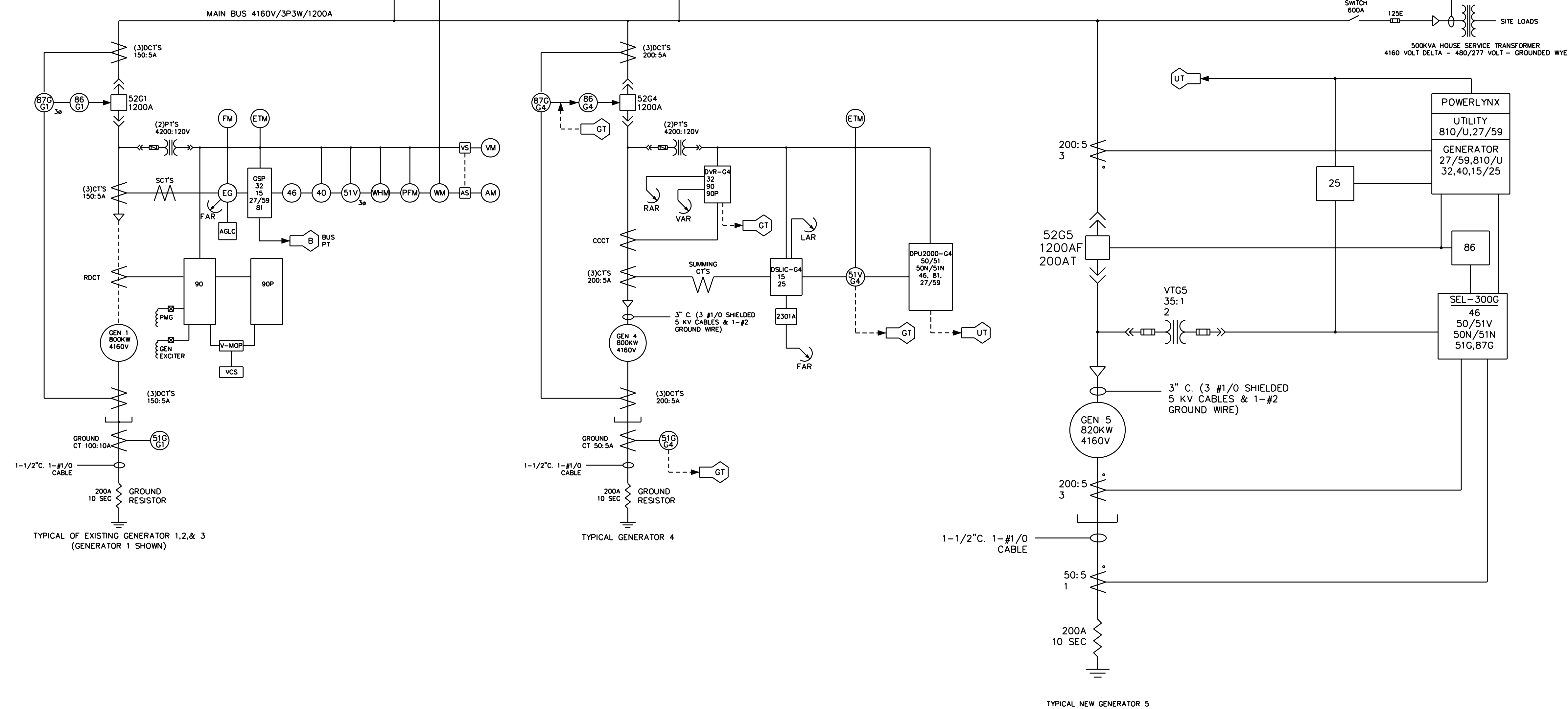
J.M.ZYLSTRA

SCALE: \_\_\_\_\_ DATE \_\_\_\_\_

7/6/00

ELECTRICAL 4160 VOL  
ONE-LINE DIAGRAM

E-2



For Review and Comment

PRINTED  
MAY 20 2009  
Theka Associates Inc.

REVISED BY:  
**THEKA ASSOCIATES Inc.**  
CONSULTING ENGINEERS  
MUSKEGON, MICHIGAN  
TAI JOB NO. E-2482      DATE: 5- -09      FILE: GLBC-E2A.DGN



**This foregoing document was electronically filed with the Public Utilities**

**Commission of Ohio Docketing Information System on**

**11/4/2009 10:47:08 AM**

**in**

**Case No(s). 09-1052-EL-REN**

Summary: Exhibit One-line diagram electronically filed by Mr. Marc Pauley on behalf of Grand Blanc Generating Station