

**MACON COUNTY BOARD RESOLUTION TO SUPPORT ROCKIES EXPRESS EAST PIPELINE PROPOSED ALIGNMENT IN MACON COUNTY**

**RESOLUTION NO. H-1580-2-08**

06-1142-GA-BTN

**WHEREAS**, the Rockies Express East Pipeline (REX East) has filed a draft Environmental Impact Statement (EIS) with the Federal Energy Regulatory Commission (FERC) during November, 2007, detailing the environmental impacts to the residents of Macon County due to the proposed construction of a natural gas pipeline; and

**WHEREAS**, the REX East EIS has been presented to the public for comments to be received to FERC by January 14, 2008; and

**WHEREAS**, FERC intends to make a final ruling on the chosen alignment by February 29, 2008; and

**WHEREAS**, Macon County has previously passed a resolution on December 13, 2007 in opposition to the REX East proposed alignment; and

**WHEREAS**, it has been the intent of Macon County to coordinate the two proposed alignments of REX East and the South East Beltway in order to lessen and reduce the environmental impacts to the residents of Macon County; and

**WHEREAS**, Rockies Express East pipeline has recently expressed a willingness to coordinate their pipeline alignment with that of the South East Beltway; and

**WHEREAS**, Macon County has identified a preferred alignment for both the pipeline and the Beltway with the alignment being legally described on Exhibit "A" attached hereto.

**NOW THEREFORE BE IT RESOLVED** by the Macon County Board as follows:

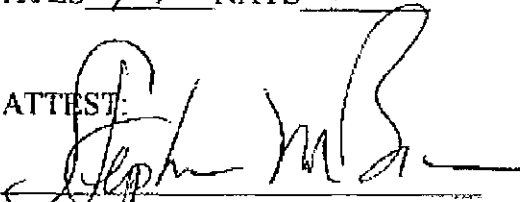
1. **THAT** the Macon County Board officially **SUPPORTS** the proposed alignment of the REX East Pipeline in Macon County as detailed in this resolution.
2. **THAT** the Macon County Board file with FERC this resolution in **SUPPORT** of the proposed REX East Pipeline on the alignment as detailed in this resolution.
3. **THAT** the Macon County Board direct the Board Chair to enter into an Agreement with Rockies Express East pipeline to construct the pipeline on the alignment detailed in this resolution.

**BE IT FURTHER RESOLVED** that this resolution shall become effective immediately upon adoption thereof.

**PRESENTED, PASSED, APPROVED** this 14th day of February, 2008.

AYES 19 NAYS 0

ATTEST:

  
Stephen M. Bean, Clerk for the  
County Of Macon, State of Illinois

MACON COUNTY BOARD  
MACON COUNTY, ILLINOIS

BY:

  
Robert Sampson, Chairman  
Macon County Board

RECEIVED-DOCKETING DIV  
2008 FEB 21 PM 2:36  
PUCO

This is to certify that the foregoing are an accurate and correct copy of the original as the same were delivered to the regular course of business.

**MACON COUNTY BOARD RESOLUTION TO SUPPORT ROCKIES EXPRESS EAST  
PIPELINE PROPOSED ALIGNMENT IN MACON COUNTY**

**RESOLUTION NO. H-1580-2-08**

**WHEREAS**, the Rockies Express East Pipeline (REX East) has filed a draft Environmental Impact Statement (EIS) with the Federal Energy Regulatory Commission (FERC) during November, 2007, detailing the environmental impacts to the residents of Macon County due to the proposed construction of a natural gas pipeline; and

**WHEREAS**, the REX East EIS has been presented to the public for comments to be received to FERC by January 14, 2008; and

**WHEREAS**, FERC intends to make a final ruling on the chosen alignment by February 29, 2008; and

**WHEREAS**, Macon County has previously passed a resolution on December 13, 2007 in opposition to the REX East proposed alignment; and

**WHEREAS**, it has been the intent of Macon County to coordinate the two proposed alignments of REX East and the South East Beltway in order to lessen and reduce the environmental impacts to the residents of Macon County; and

**WHEREAS**, Rockies Express East pipeline has recently expressed a willingness to coordinate their pipeline alignment with that of the South East Beltway; and

**WHEREAS**, Macon County has identified a preferred alignment for both the pipeline and the Beltway with the alignment being legally described on Exhibit "A" attached hereto.

**NOW THEREFORE BE IT RESOLVED** by the Macon County Board as follows:

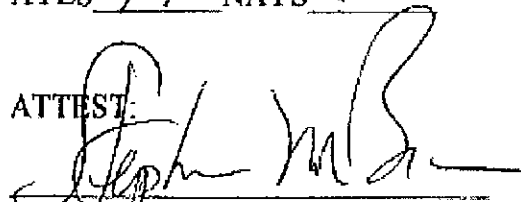
1. **THAT** the Macon County Board officially **SUPPORTS** the proposed alignment of the REX East Pipeline in Macon County as detailed in this resolution.
2. **THAT** the Macon County Board file with FERC this resolution in **SUPPORT** of the proposed REX East Pipeline on the alignment as detailed in this resolution.
3. **THAT** the Macon County Board direct the Board Chair to enter into an Agreement with Rockies Express East pipeline to construct the pipeline on the alignment detailed in this resolution.

**BE IT FURTHER RESOLVED** that this resolution shall become effective immediately upon the adoption thereof.

**PRESENTED, PASSED, APPROVED** this 14th day of February, 2008.


AYES 19 NAYS 0

ATTEST:

  
Stephen M. Bean, Clerk for the  
County Of Macon, State of Illinois

MACON COUNTY BOARD  
MACON COUNTY, ILLINOIS

BY:

  
Robert Sampson, Chairman  
Macon County Board

## Exhibit A

### PREFERRED ALIGNMENT OF REX PIPELINE

#### LEGAL DESCRIPTION

The following description defines the south Right-of-Way line for the South East Beltway. The preferred pipeline alignment is centered on a line offset twenty-five feet to the south of the following description:

Part of Sections 5, 8, 9, 10, 11 and 12 of Township 15 North, Range 3 East of the Third Principal Meridian, more particularly described by grid coordinates, grid bearings and grid distances referenced to the Illinois State Plane Coordinate System, NAD83 (1997), East Zone (1201) with a combined grid and elevation factor of 0.99997552:

Beginning at coordinate, North 1,131,537.63, East 822,486.81; thence South 43 degrees 50 minutes 32 seconds East, 4,446.70 feet to a point on a 8,590.00 foot radius curve, the center of circle bears North 46 degrees 09 minutes 28 seconds East; thence southeasterly along the curve, 2,189.10 feet through a central angle of 14 degrees 36 minutes 05 seconds and having a chord bearing of South 51 degrees 08 minutes 35 seconds East for a distance of 2,183.18 feet; thence South 37 degrees 39 minutes 07 seconds East, 212.49 feet; thence South 77 degrees 01 minutes 38 seconds East, 324.57 feet; thence South 63 degrees 45 minutes 27 seconds East, 339.52 feet; thence South 65 degrees 40 minutes 47 seconds East, 417.92 feet; thence South 53 degrees 06 minutes 02 seconds East, 302.80 feet; thence South 74 degrees 37 minutes 20 seconds East, 972.52 feet; thence South 80 degrees 06 minutes 20 seconds East, 202.81 feet to a point on a 8,590.00 foot radius curve, the center of circle bears North 13 degrees 21 minutes 23 seconds East; thence southeasterly along the curve, 1,993.88 feet through a central angle of 13 degrees 17 minutes 58 seconds and having a chord bearing of South 83 degrees 17 minutes 36 seconds East for a distance of 1,989.41 feet; thence South 89 degrees 56 minutes 34 seconds East, 1,624.26 feet to a point on a 4,090.00 foot radius curve, the center of circle bears North 00 degrees 03 minutes 26 seconds East; thence northeasterly along the curve, 1,843.31 feet through a central angle of 25 degrees 49 minutes 21 seconds and having a chord bearing of North 77 degrees 08 minutes 45 seconds East for a distance of 1,827.75 feet; thence North 65 degrees 17 minutes 31 seconds East, 1,494.78 feet to a point on a 7,800.00 foot radius curve, the center of circle bears South 25 degrees 07 minutes 49 seconds East; thence northeasterly along the curve, 780.00 feet through a central angle of 5 degrees 43 minutes 46 seconds and having a chord bearing of North 67 degrees 44 minutes 04 seconds East for a distance of 779.68 feet; thence North 67 degrees 52 minutes 49 seconds East, 588.86 feet to a point on a 7,850.00 foot radius curve, the center of circle bears South 15 degrees 06 minutes 13 seconds East; thence northeasterly along the curve, 389.30 feet through a central angle of 2 degrees 50 minutes 29 seconds and having a chord bearing of North 76 degrees 19 minutes 02 seconds East for a distance of 389.26 feet; thence North 77 degrees 44 minutes 16 seconds East, 603.26 feet; thence North 73 degrees 39 minutes 25 seconds East, 799.48 feet to a point on a 7,910.00 foot radius curve, the center of circle bears South 10 degrees 39 minutes 23 seconds East; thence northeasterly along the curve, 1,399.94 feet through a central angle of 10 degrees 08 minutes 26 seconds and having a chord bearing of North 84 degrees 24 minutes 50 seconds East for a distance of 1,398.12 feet; thence North 89 degrees 29 minutes 03 seconds East, 5,392.85 feet to coordinate, North 1,127,867.32, East 846,304.09.

Exhibit A

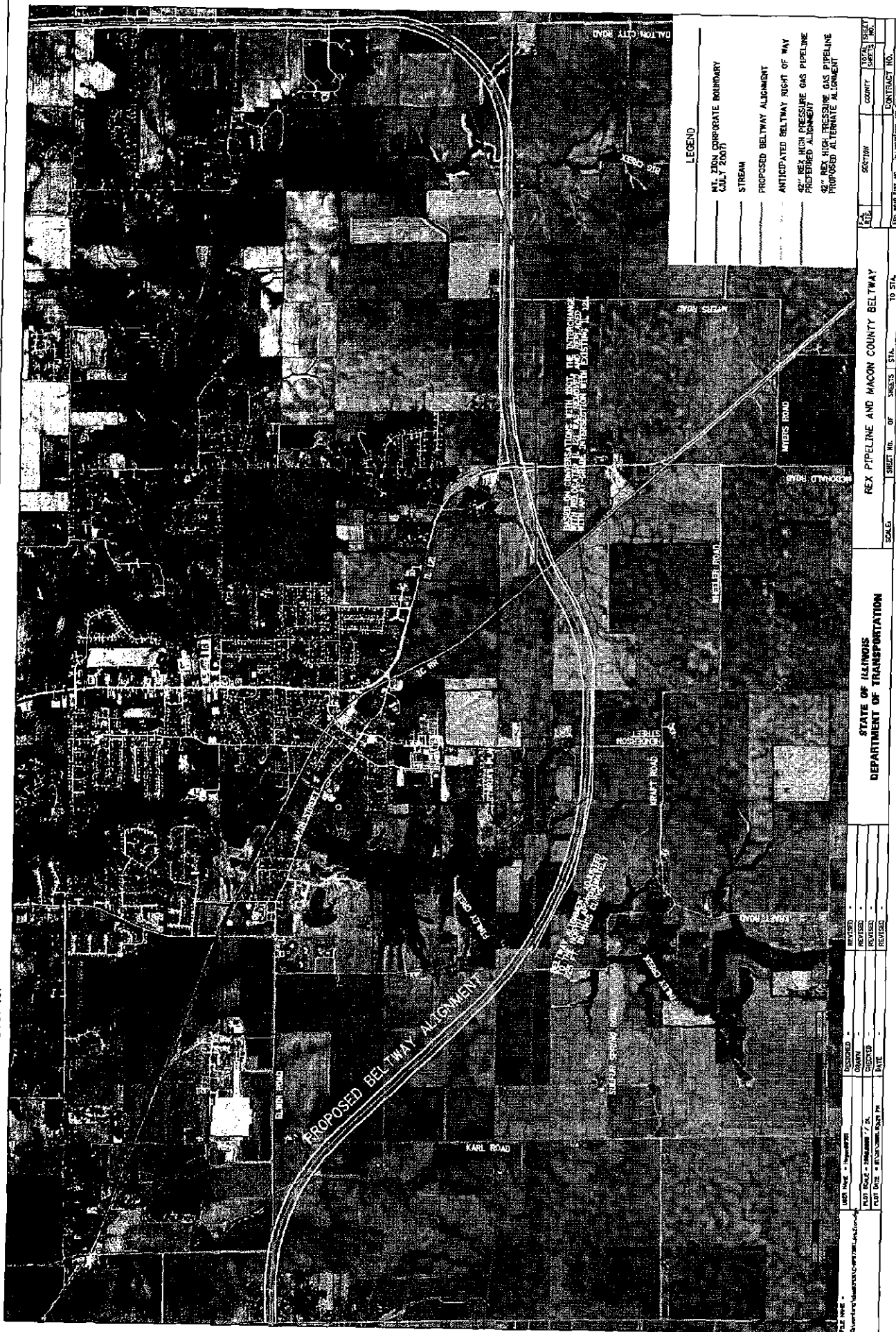
**PREFERRED ALIGNMENT OF REX PIPELINE**

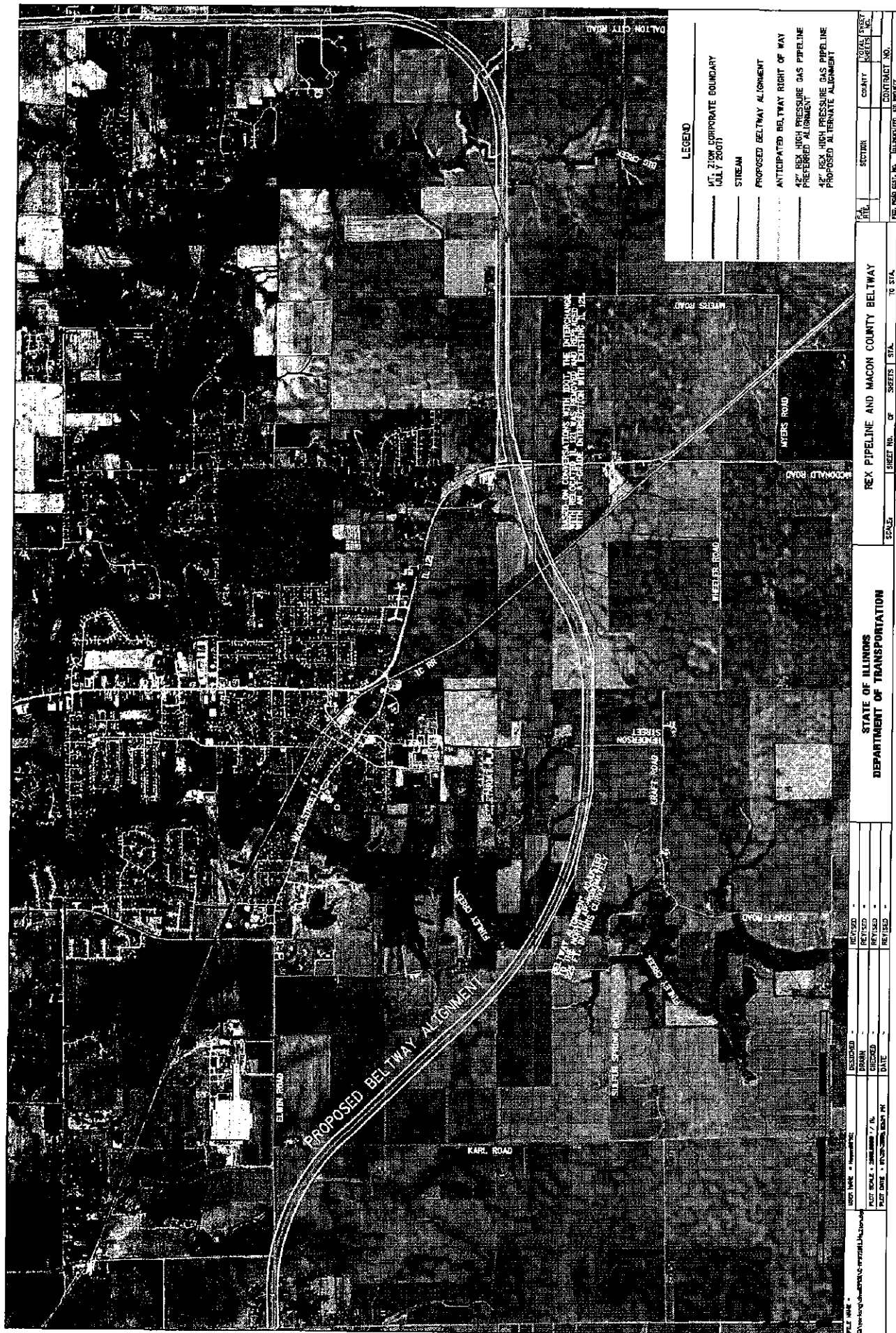
**LEGAL DESCRIPTION**

The following description defines the south Right-of-Way line for the South East Beltway. The preferred pipeline alignment is centered on a line offset twenty-five feet to the south of the following description:

Part of Sections 5, 8, 9, 10, 11 and 12 of Township 15 North, Range 3 East of the Third Principal Meridian, more particularly described by grid coordinates, grid bearings and grid distances referenced to the Illinois State Plane Coordinate System, NAD83 (1997), East Zone (1201) with a combined grid and elevation factor of 0.99997552:

Beginning at coordinate, North 1,131,537.63, East 822,486.81; thence South 43 degrees 50 minutes 32 seconds East, 4,446.70 feet to a point on a 8,590.00 foot radius curve, the center of circle bears North 46 degrees 09 minutes 28 seconds East; thence southeasterly along the curve, 2,189.10 feet through a central angle of 14 degrees 36 minutes 05 seconds and having a chord bearing of South 51 degrees 08 minutes 35 seconds East for a distance of 2,183.18 feet; thence South 37 degrees 39 minutes 07 seconds East, 212.49 feet; thence South 77 degrees 01 minutes 38 seconds East, 324.57 feet; thence South 63 degrees 45 minutes 27 seconds East, 339.52 feet; thence South 65 degrees 40 minutes 47 seconds East, 417.92 feet; thence South 53 degrees 06 minutes 02 seconds East, 302.80 feet; thence South 74 degrees 37 minutes 20 seconds East, 972.52 feet; thence South 80 degrees 06 minutes 20 seconds East, 202.81 feet to a point on a 8,590.00 foot radius curve, the center of circle bears North 13 degrees 21 minutes 23 seconds East; thence southeasterly along the curve, 1,993.88 feet through a central angle of 13 degrees 17 minutes 58 seconds and having a chord bearing of South 83 degrees 17 minutes 36 seconds East for a distance of 1,989.41 feet; thence South 89 degrees 56 minutes 34 seconds East, 1,624.26 feet to a point on a 4,090.00 foot radius curve, the center of circle bears North 00 degrees 03 minutes 26 seconds East; thence northeasterly along the curve, 1,843.31 feet through a central angle of 25 degrees 49 minutes 21 seconds and having a chord bearing of North 77 degrees 08 minutes 45 seconds East for a distance of 1,827.75 feet; thence North 65 degrees 17 minutes 31 seconds East, 1,494.78 feet to a point on a 7,800.00 foot radius curve, the center of circle bears South 25 degrees 07 minutes 49 seconds East; thence northeasterly along the curve, 780.00 feet through a central angle of 5 degrees 43 minutes 46 seconds and having a chord bearing of North 67 degrees 44 minutes 04 seconds East for a distance of 779.68 feet; thence North 67 degrees 52 minutes 49 seconds East, 588.86 feet to a point on a 7,850.00 foot radius curve, the center of circle bears South 15 degrees 06 minutes 13 seconds East; thence northeasterly along the curve, 389.30 feet through a central angle of 2 degrees 50 minutes 29 seconds and having a chord bearing of North 76 degrees 19 minutes 02 seconds East for a distance of 389.26 feet; thence North 77 degrees 44 minutes 16 seconds East, 603.26 feet; thence North 73 degrees 39 minutes 25 seconds East, 799.48 feet to a point on a 7,910.00 foot radius curve, the center of circle bears South 10 degrees 39 minutes 23 seconds East; thence northeasterly along the curve, 1,399.94 feet through a central angle of 10 degrees 08 minutes 26 seconds and having a chord bearing of North 84 degrees 24 minutes 50 seconds East for a distance of 1,398.12 feet; thence North 89 degrees 29 minutes 03 seconds East, 5,392.85 feet to coordinate, North 1,127,867.32, East 846,304.09.





Submission Contents

Resolution_H-1580-2-08.pdf.....	1-1
Resolution_H-1580-2-08.pdf.....	2-2
Align_Res_Exhibit_A.pdf.....	3-3
Align_Res_Exhibit_A.pdf.....	4-4
MTZ-REX_Mod_Align.pdf.....	5-5
MTZ-REX_Mod_Align.pdf.....	6-6