

Duke Energy Ohio
Case No. 19-1471-EL-BLN
STAFF Second Set of Data Requests
Date Received: Wednesday, October 30, 2019

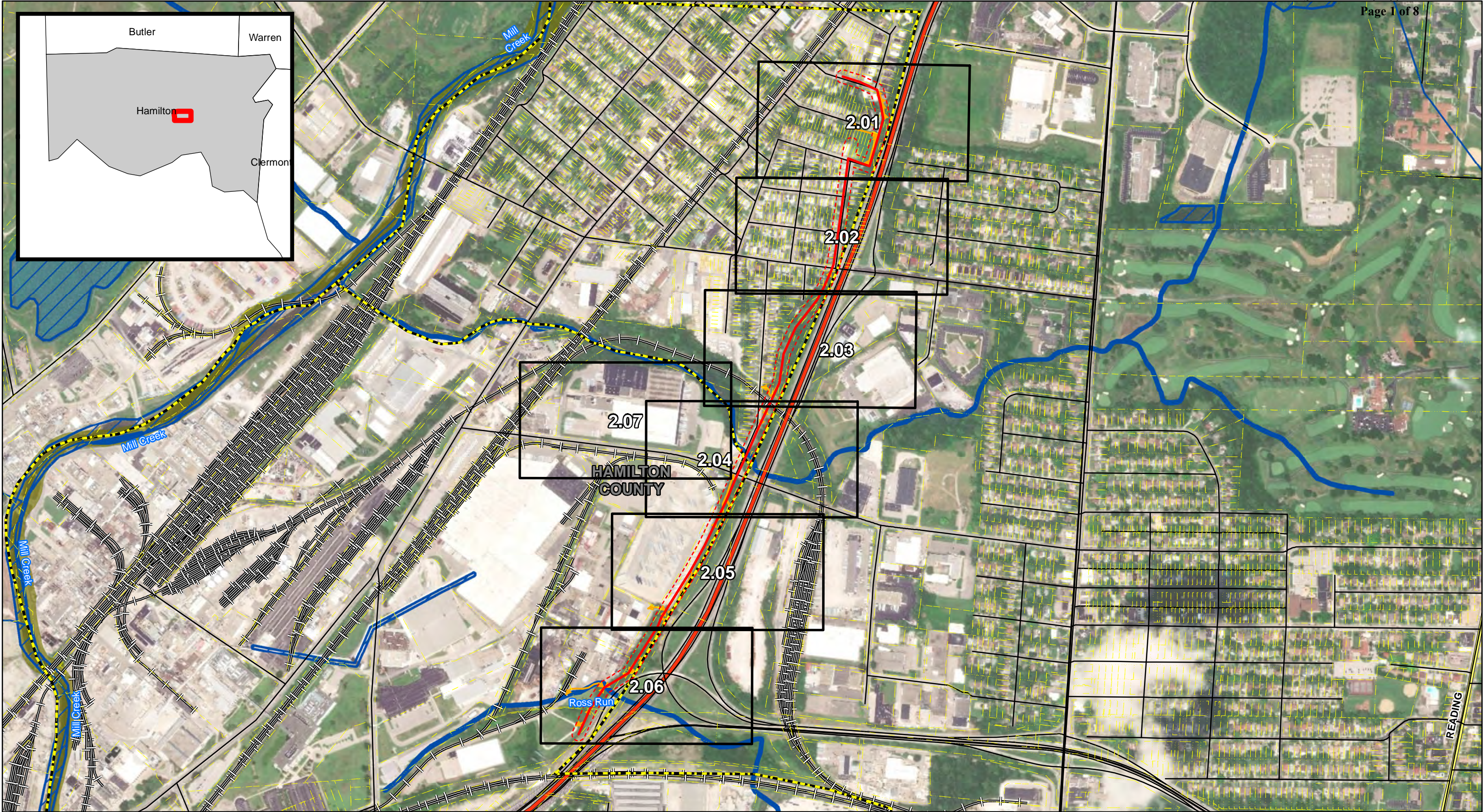
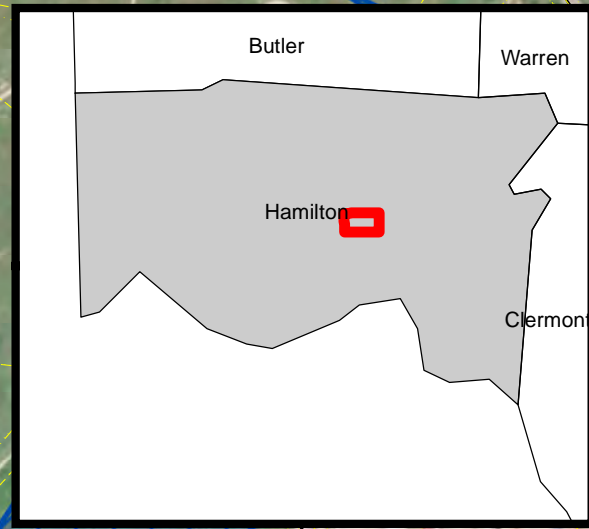
STAFF-DR-02-001 A

REQUEST:

I understand the ODOT plans you submitted show the structure locations for the structures needing removal, and Figure 1 in Attachment A also shows an aerial of the current t-line and the structures to be removed, however staff needs maps that show more details on the current t-line and current structures to be removed, similar to the detailed maps in Figures 2.01-2.07 in Attachment A. Can you provide these please?

RESPONSE: Please see STAFF-DR-02-001 A Attachment 1.

PERSON RESPONSIBLE: Cori Jansing and Jacob Dawn



PROJECT LOCATION

HAMILTON COUNTY, OHIO

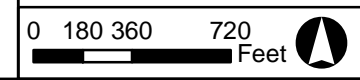
REFERENCE:
 USGS 7.5' TOPOGRAPHIC
 QUADRANGLE: CINCINNATI EAST, OHIO.
 OBTAINED VIA ESRI USA TOPO,
 NATIONAL GEOGRAPHIC TOPO,
 AND USGS, ACCESSED 10/2018

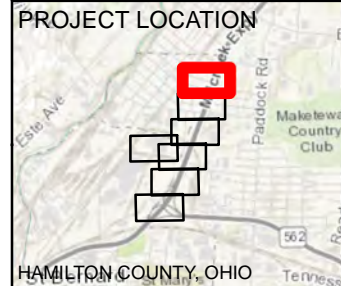
Sheet Index	Municipal Boundary	Interstate	NHD Flowline
Project Centerline	County Boundary	State Highway	100Yr Floodplain
100-ft Corridor	Alternate Access Route	US Highway	
Existing Facility	Potential Access	Railroad	
Parcels	Local Roads	NWI Wetland	

FIGURE 2
 OPSB BLN FILING
 ELMWOOD PLACE I-75 WIDENING
 TRANSMISSION IMPROVEMENT PROJECT
 DUKE ENERGY OHIO
 ENVIRONMENTAL ACCESS PLAN INDEX SHEET

DRAWN BY: CAD
 CHECKED: CAJ

DATE: 10/31/2019
 APPROVED: CAJ





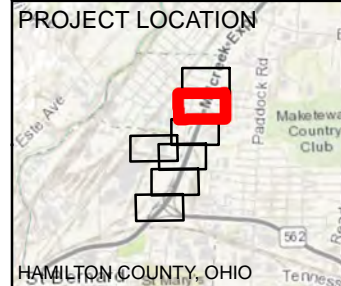
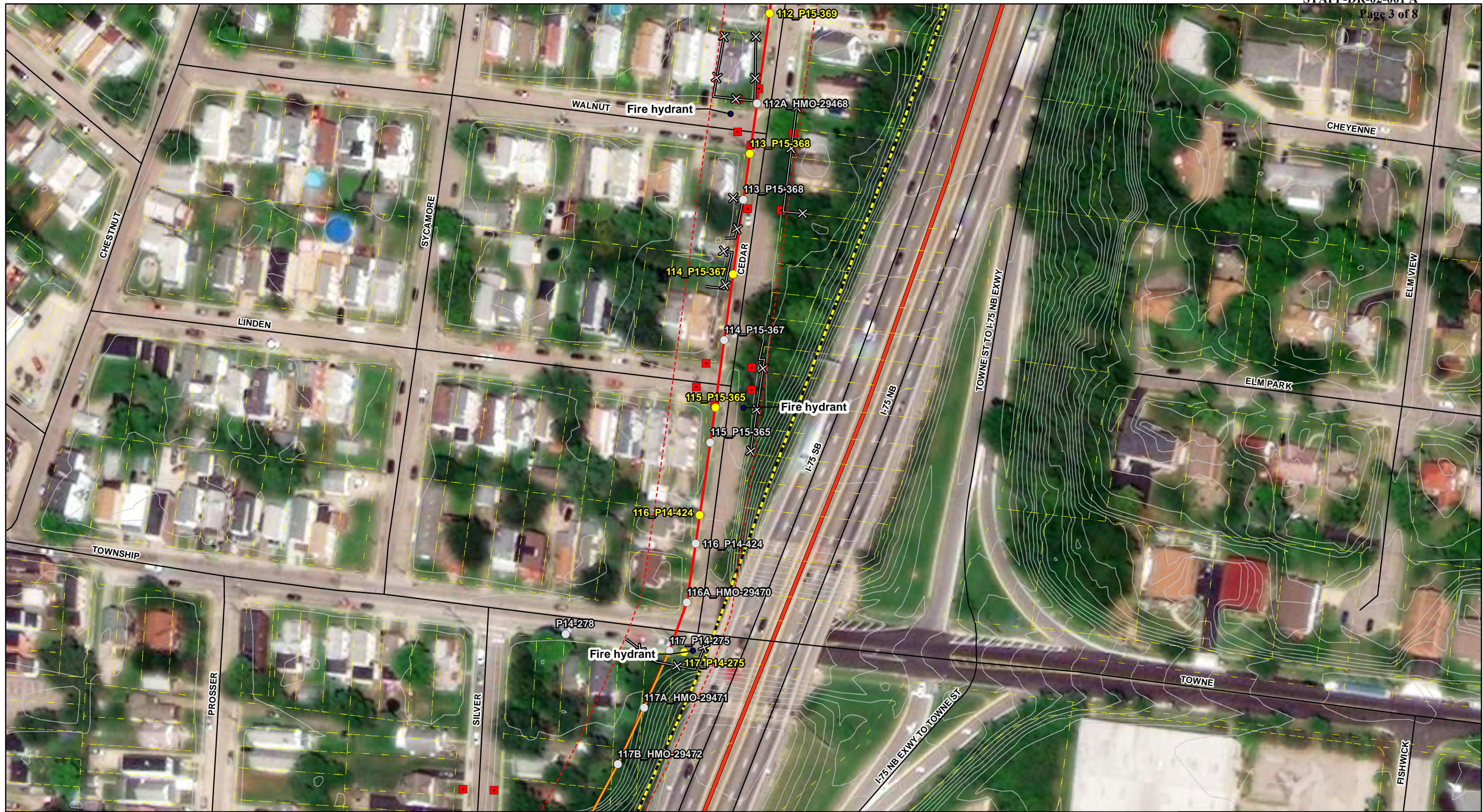
REFERENCE:
 USGS 7.5' TOPOGRAPHIC
 QUADRANGLE: CINCINNATI EAST, OHIO.
 OBTAINED VIA ESRI USA TOPO,
 NATIONAL GEOGRAPHIC TOPO,
 AND USGS, ACCESSED 10/2018

● Identified Features	■ Storm Water Inlet	— Interstate	— 1' Contour Line
- - - 100-ft Corridor	- - - Alternate Access Route	— State Highway	
■ Existing Facility	→ Potential Access	— US Highway	
○ Proposed Structure	▨ Municipal Boundary	— Railroad	
● Existing Structure	▨ Laydown Yard	▨ NWI Wetlands	
✂ Fence Line	— Project Centerline	▨ NHD Flowline	
▨ Parcels	— Local Roads	▨ 100Yr Floodplain	

FIGURE 2.01
 OPSB BLN FILING
 ELMWOOD PLACE I-75 WIDENING
 TRANSMISSION IMPROVEMENT PROJECT
 DUKE ENERGY OHIO
 ENVIRONMENTAL ACCESS PLAN

0 50 100 Feet

DRAWN BY: COD
 CHECKED: DKT
 DATE: 11/1/2019
 APPROVED: MWW

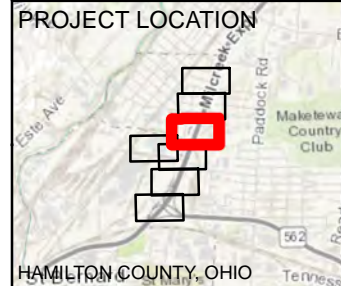
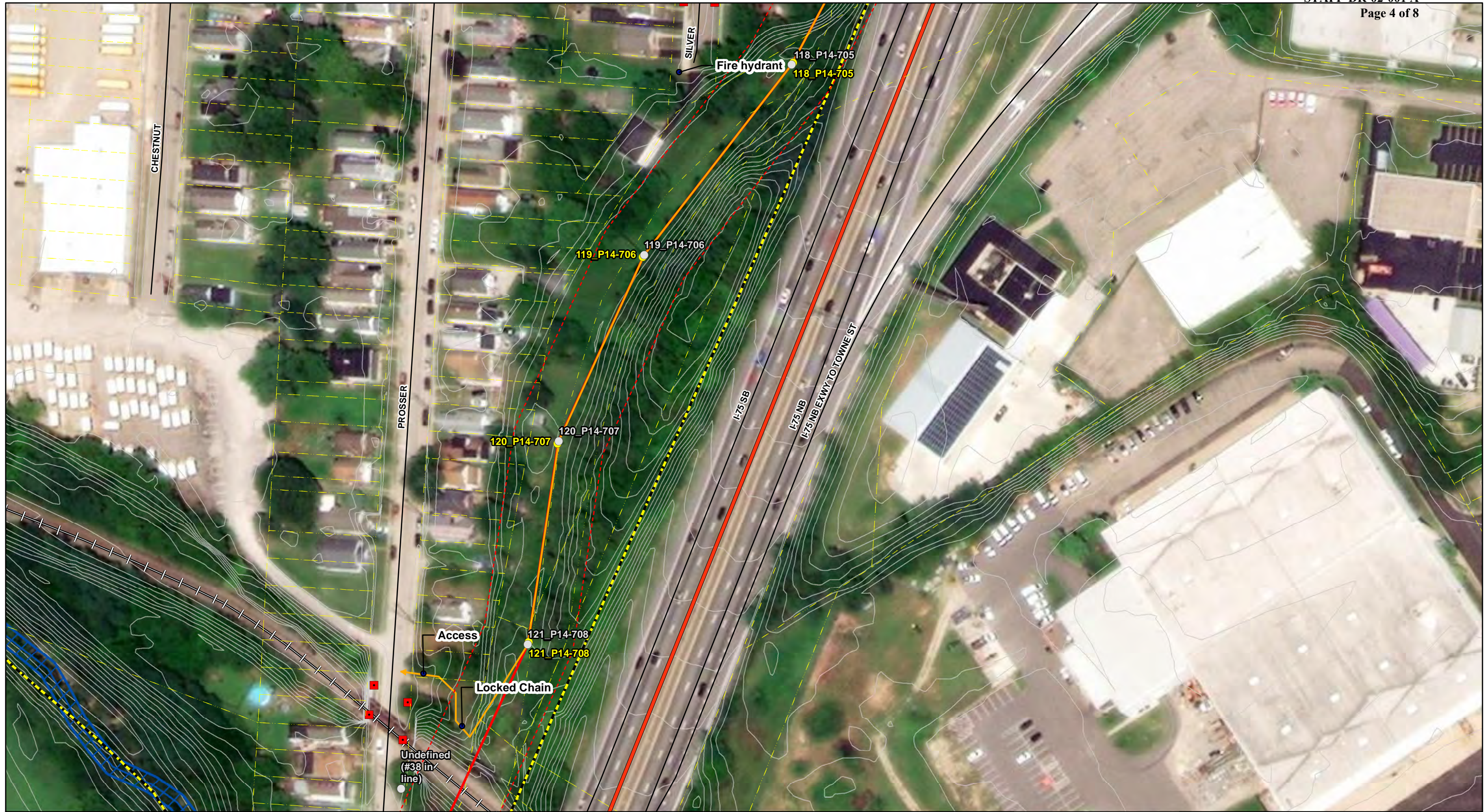


REFERENCE:
 USGS 7.5' TOPOGRAPHIC
 QUADRANGLE: CINCNATI EAST, OHIO.
 OBTAINED VIA ESRI USA TOPO,
 NATIONAL GEOGRAPHIC TOPO,
 AND USGS, ACCESSED 10/2018

● Identified Features	■ Storm Water Inlet	— Interstate	— 1' Contour Line
- - - 100-ft Corridor	- - - Alternate Access Route	— State Highway	
■ Existing Facility	→ Potential Access	— US Highway	
○ Proposed Structure	▭ Municipal Boundary	— Railroad	
● Existing Structure	▨ Laydown Yard	▭ NWI Wetlands	
✂ Fence Line	— Project Centerline	▭ NHD Flowline	
▭ Parcels	— Local Roads	▭ 100Yr Floodplain	

FIGURE 2.02
 OPSB BLN FILING
 ELMWOOD PLACE I-75 WIDENING
 TRANSMISSION IMPROVEMENT PROJECT
 DUKE ENERGY OHIO
 ENVIRONMENTAL ACCESS PLAN

DRAWN BY: COD
 CHECKED: DKT
 DATE: 11/1/2019
 APPROVED: MWW

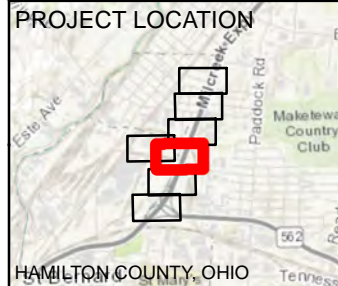
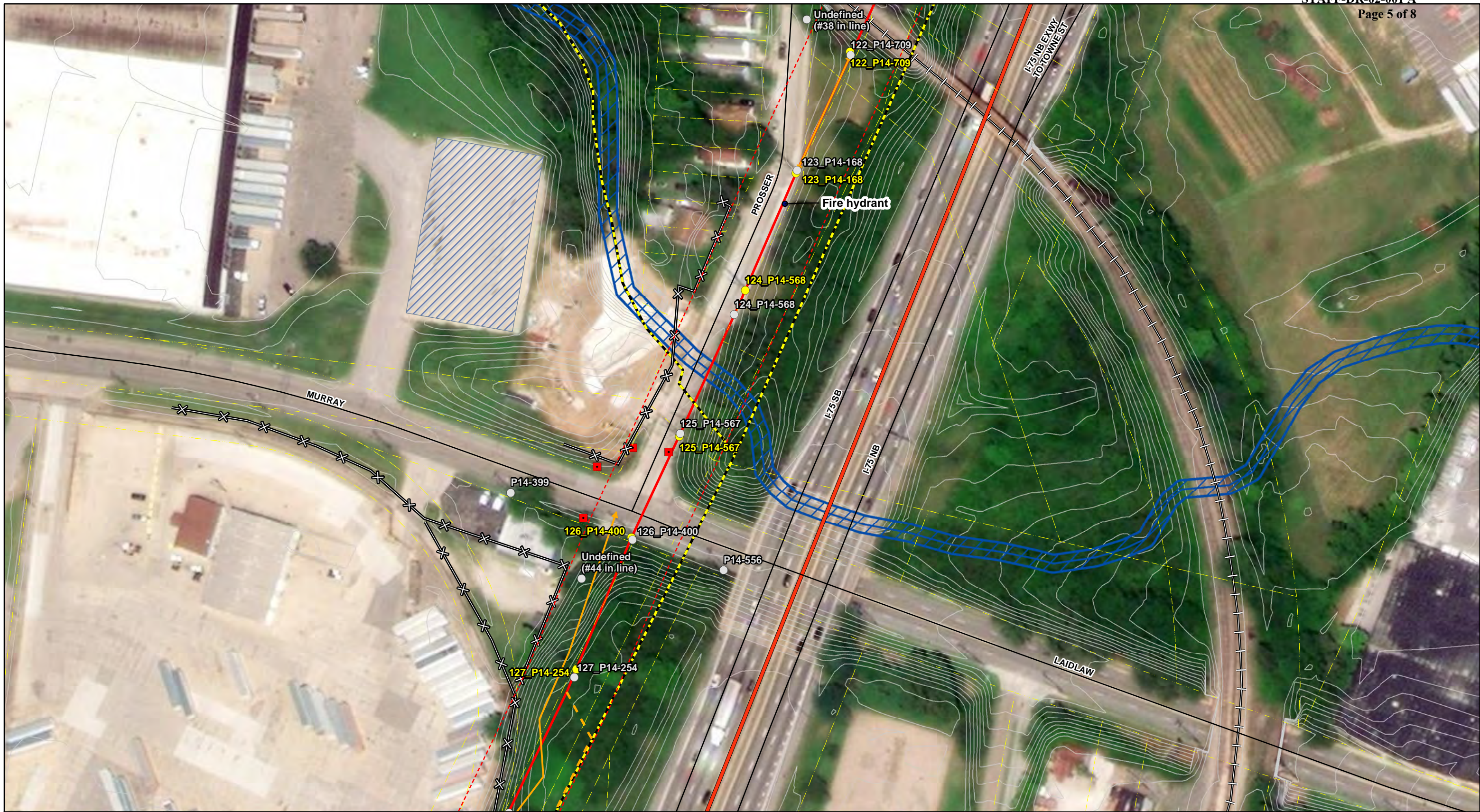


REFERENCE:
 USGS 7.5' TOPOGRAPHIC
 QUADRANGLE: CINCNATI EAST, OHIO.
 OBTAINED VIA ESRI USA TOPO,
 NATIONAL GEOGRAPHIC TOPO,
 AND USGS, ACCESSED 10/2018

● Identified Features	■ Storm Water Inlet	— Interstate	— 1' Contour Line
- - - 100-ft Corridor	— Alternate Access Route	— State Highway	
■ Existing Facility	→ Potential Access	— US Highway	
○ Proposed Structure	▭ Municipal Boundary	— Railroad	
● Existing Structure	▨ Laydown Yard	▭ NWI Wetlands	
⊗ Fence Line	— Project Centerline	▭ NHD Flowline	
▭ Parcels	— Local Roads	▭ 100Yr Floodplain	

FIGURE 2.03
 OPSB BLN FILING
 ELMWOOD PLACE I-75 WIDENING
 TRANSMISSION IMPROVEMENT PROJECT
 DUKE ENERGY OHIO
 ENVIRONMENTAL ACCESS PLAN

DRAWN BY: COD
 CHECKED: DKT
 DATE: 11/1/2019
 APPROVED: MWW

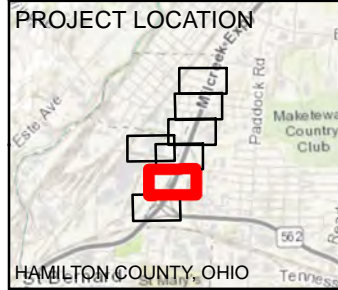


REFERENCE:
 USGS 7.5' TOPOGRAPHIC
 QUADRANGLE: CINCINNATI EAST, OHIO.
 OBTAINED VIA ESRI USA TOPO,
 NATIONAL GEOGRAPHIC TOPO,
 AND USGS, ACCESSED 10/2018

● Identified Features	■ Storm Water Inlet	— Interstate	— 1' Contour Line
- - - 100-ft Corridor	- - - Alternate Access Route	— State Highway	
■ Existing Facility	→ Potential Access	— US Highway	
○ Proposed Structure	▨ Municipal Boundary	— Railroad	
● Existing Structure	▨ Laydown Yard	▨ NWI Wetlands	
✂ Fence Line	— Project Centerline	▨ NHD Flowline	
▨ Parcels	— Local Roads	▨ 100Yr Floodplain	

FIGURE 2.04
 OPSB BLN FILING
 ELMWOOD PLACE I-75 WIDENING
 TRANSMISSION IMPROVEMENT PROJECT
 DUKE ENERGY OHIO
 ENVIRONMENTAL ACCESS PLAN

DRAWN BY: COD
 CHECKED: DKT
 DATE: 11/1/2019
 APPROVED: MWW

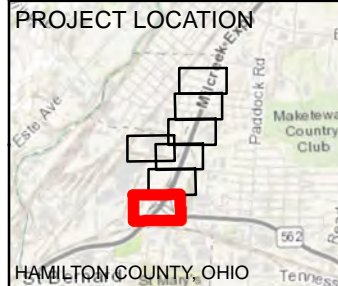
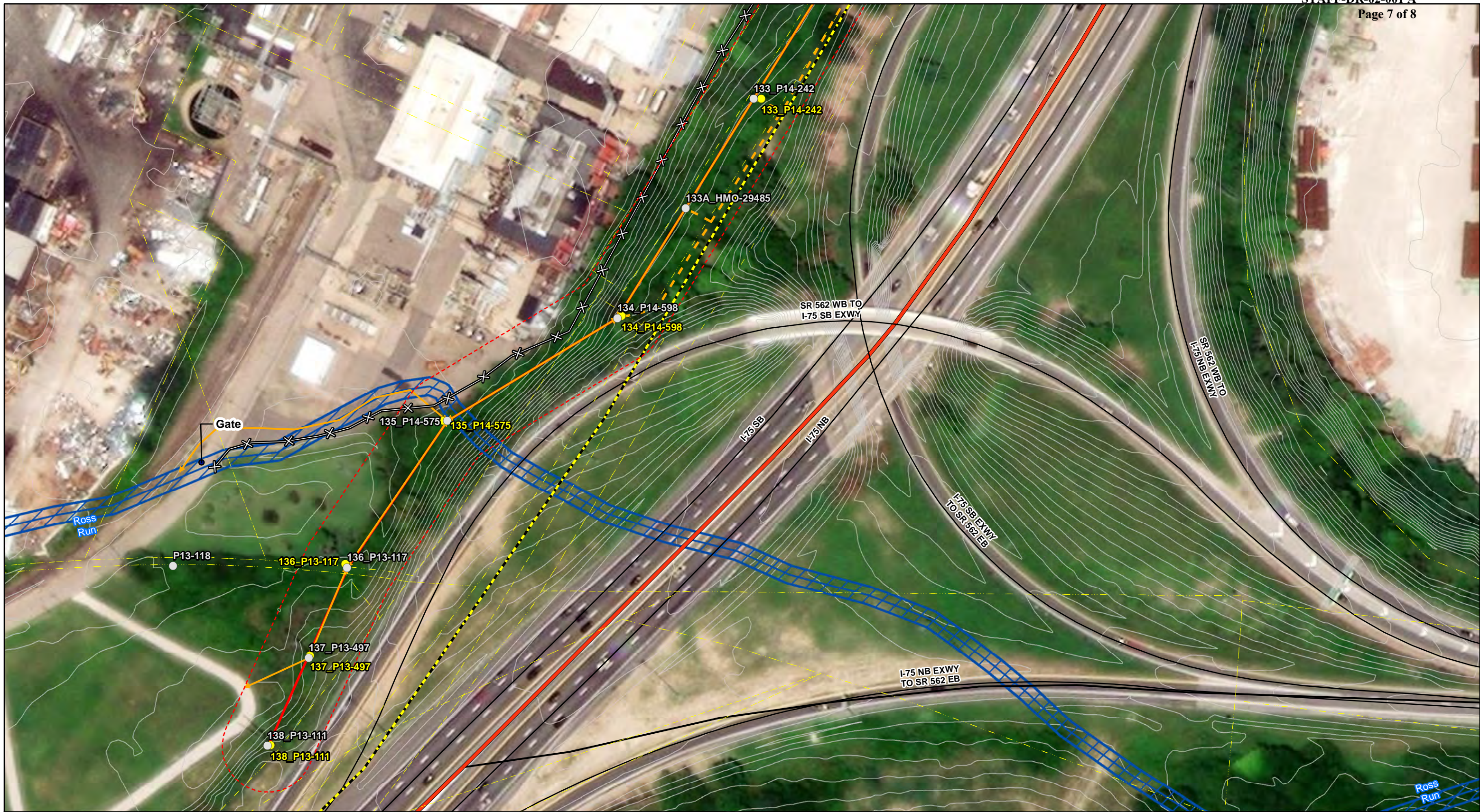


REFERENCE:
 USGS 7.5' TOPOGRAPHIC
 QUADRANGLE: CINCINNATI EAST, OHIO.
 OBTAINED VIA ESRI USA TOPO,
 NATIONAL GEOGRAPHIC TOPO,
 AND USGS, ACCESSED 10/2018

● Identified Features	■ Storm Water Inlet	— Interstate	— 1' Contour Line
- - - 100-ft Corridor	- - - Alternate Access Route	— State Highway	
■ Existing Facility	→ Potential Access	— US Highway	
○ Proposed Structure	▨ Municipal Boundary	— Railroad	
● Existing Structure	▨ Laydown Yard	▨ NWI Wetlands	
✂ Fence Line	— Project Centerline	— NHD Flowline	
▨ Parcels	— Local Roads	▨ 100Yr Floodplain	

FIGURE 2.05
 OPSB BLN FILING
 ELMWOOD PLACE I-75 WIDENING
 TRANSMISSION IMPROVEMENT PROJECT
 DUKE ENERGY OHIO
 ENVIRONMENTAL ACCESS PLAN

DRAWN BY: COD
 CHECKED: DKT
 DATE: 11/1/2019
 APPROVED: MWW

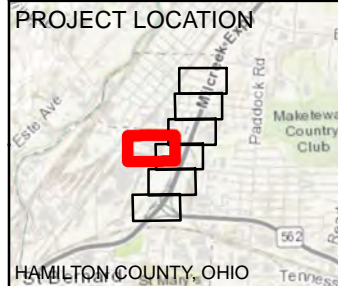
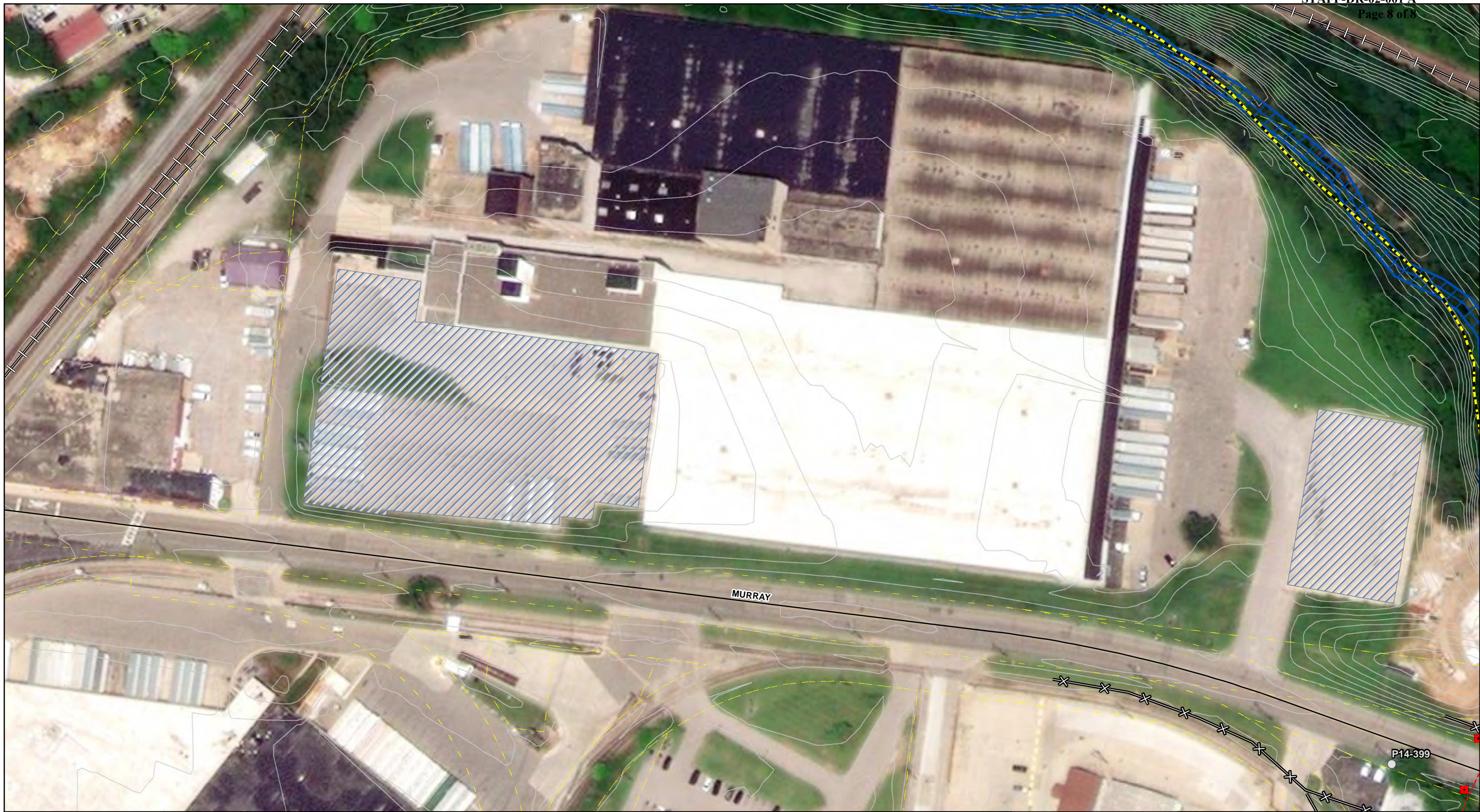


REFERENCE:
 USGS 7.5' TOPOGRAPHIC
 QUADRANGLE: CINCNATI EAST, OHIO.
 OBTAINED VIA ESRI USA TOPO,
 NATIONAL GEOGRAPHIC TOPO,
 AND USGS, ACCESSED 10/2018

● Identified Features	■ Storm Water Inlet	— Interstate	— 1' Contour Line
- - - 100-ft Corridor	- - - Alternate Access Route	— State Highway	
■ Existing Facility	→ Potential Access	— US Highway	
○ Proposed Structure	▭ Municipal Boundary	— Railroad	
● Existing Structure	▨ Laydown Yard	▨ NWI Wetlands	
✂ Fence Line	— Project Centerline	▨ NHD Flowline	
▭ Parcels	— Local Roads	▨ 100Yr Floodplain	

FIGURE 2.06
 OPSB BLN FILING
 ELMWOOD PLACE I-75 WIDENING
 TRANSMISSION IMPROVEMENT PROJECT
 DUKE ENERGY OHIO
 ENVIRONMENTAL ACCESS PLAN

DRAWN BY: COD
 CHECKED: DKT
 DATE: 11/1/2019
 APPROVED: MWW



REFERENCE:
 USGS 7.5' TOPOGRAPHIC
 QUADRANGLE: CINCINNATI EAST, OHIO.
 OBTAINED VIA ESRI USA TOPO,
 NATIONAL GEOGRAPHIC TOPO,
 AND USGS, ACCESSED 10/2018

● Identified Features	■ Storm Water Inlet	— Interstate	— 1' Contour Line
- - - 100-ft Corridor	- - - Alternate Access Route	— State Highway	
■ Existing Facility	→ Potential Access	— US Highway	
○ Proposed Structure	▭ Municipal Boundary	— Railroad	
● Existing Structure	▨ Laydown Yard	▭ NWI Wetlands	
✂ Fence Line	— Project Centerline	— NHD Flowline	
▭ Parcels	— Local Roads	▭ 100Yr Floodplain	

FIGURE 2.07
 OPSB BLN FILING
 ELMWOOD PLACE I-75 WIDENING
 TRANSMISSION IMPROVEMENT PROJECT
 DUKE ENERGY OHIO
 ENVIRONMENTAL ACCESS PLAN

DRAWN BY: COD
 CHECKED: DKT
 DATE: 11/1/2019
 APPROVED: MWW