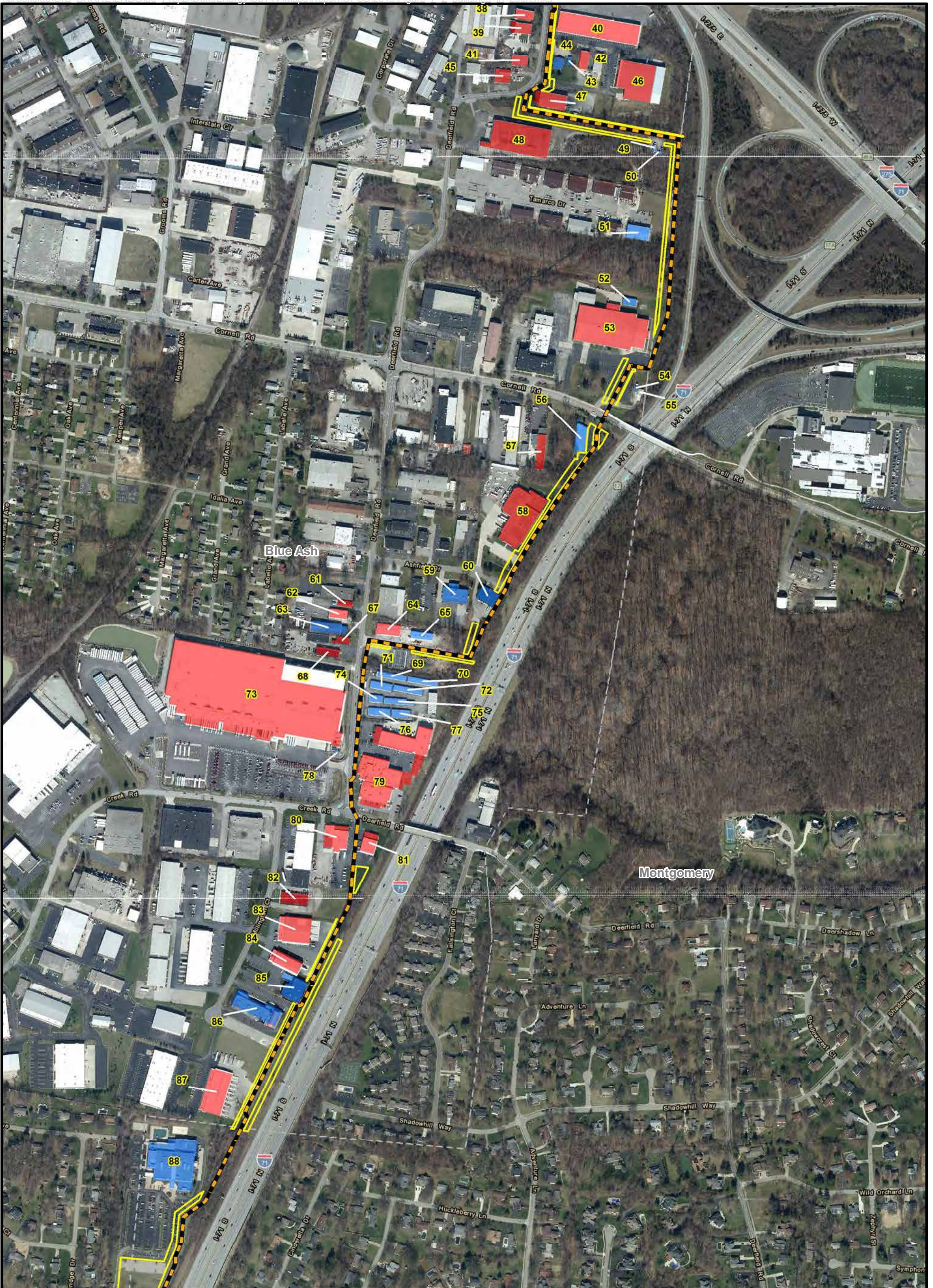
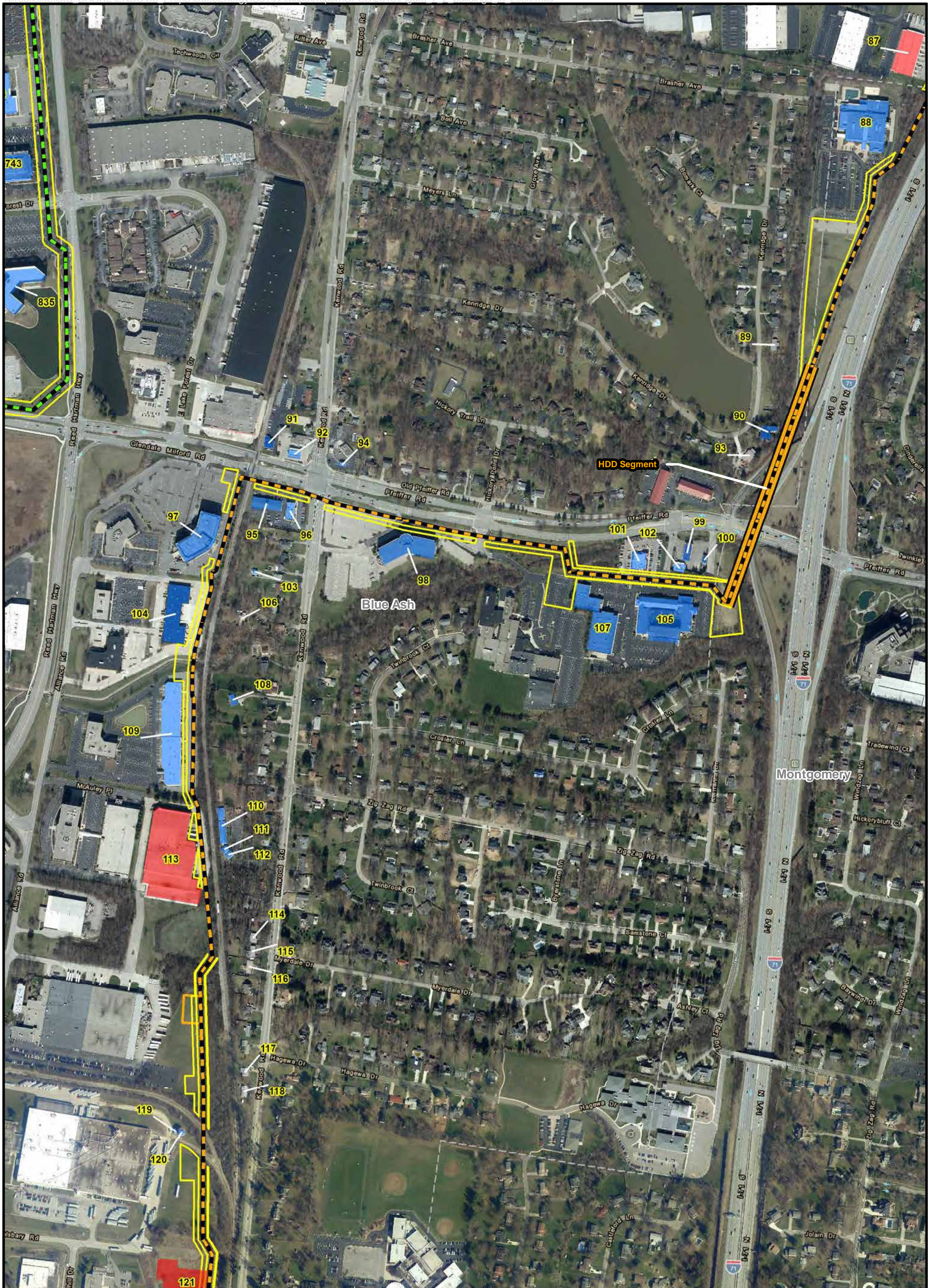




LEGEND: <ul style="list-style-type: none"> Preferred Route Alternate Route Existing or Future Regulation Station HDD Segment or Bore Segment Municipal Boundary Temporary Workspace Permanent Access Road Temporary Access Road 		Stations <ul style="list-style-type: none"> Commercial Residential Civic Building Industrial Hospital School 	<div style="text-align: center;"> N BASE MAP SOURCE: CAGIS, 2017 Aerial </div>			C314V Central Corridor Pipeline Extension Project
0 240 480 960 Scale in Feet		*The structure data types are based on data from Hamilton County CAGIS files, and where warranted, specific structure types updated based on aerial photography and other sources.		FIGURE 7-2A STRUCTURES WITHIN 200 FEET* OF PERMANENT ROW BOUNDARY		
PN: 672247 CREATED BY: RD REVIEWED BY: MF						



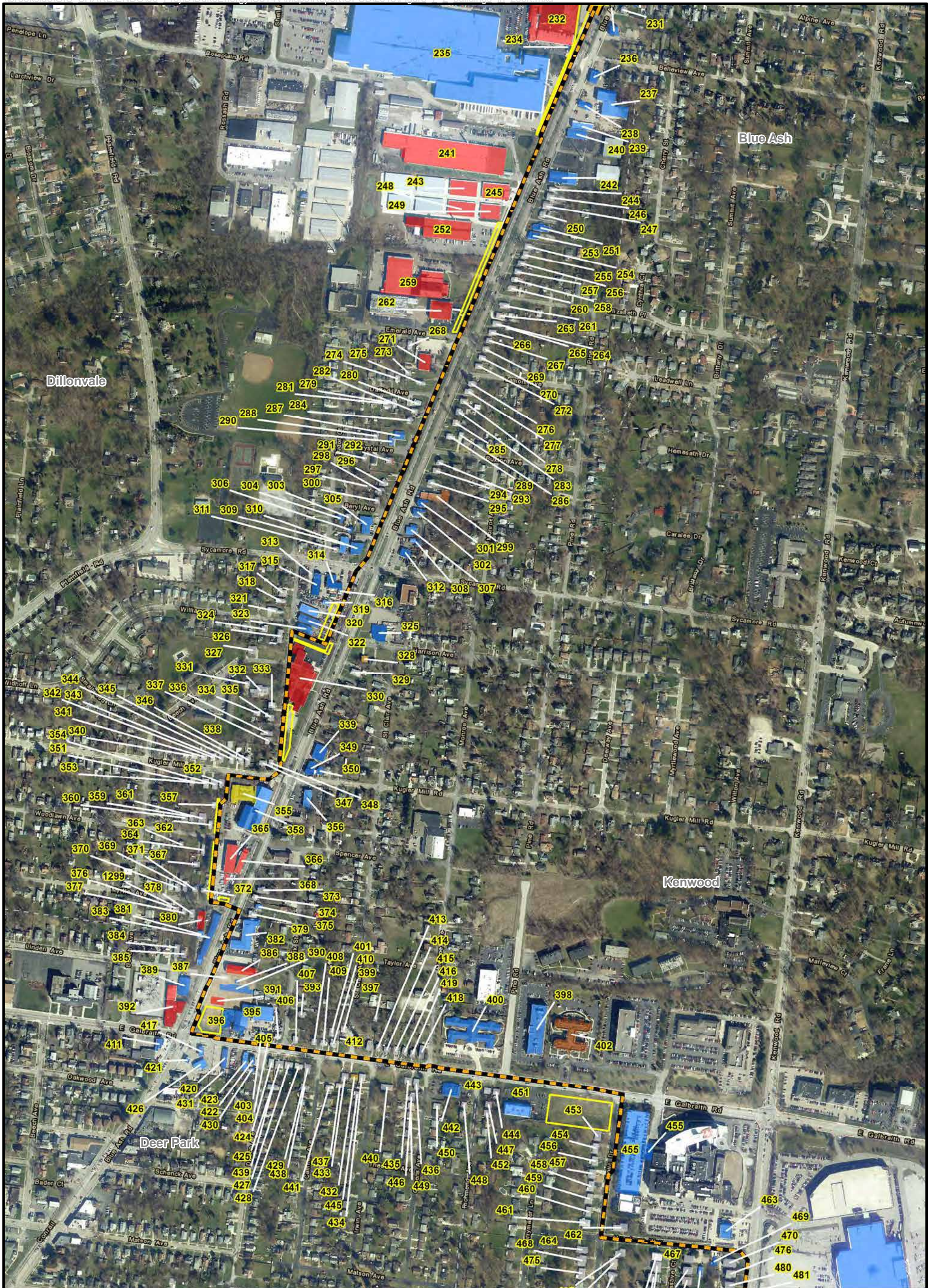
LEGEND: Preferred Route Alternate Route Existing or Future Regulation Station HDD Segment or Bore Segment Municipal Boundary Temporary Workspace Permanent Access Road Temporary Access Road Stations Building Footprint Commercial Residential Civic Building Industrial Hospital School		 BASE MAP SOURCE: CAGIS, 2017 Aerial *The structure data types are based on data from Hamilton County CAGIS files, and where warranted, specific structure types updated based on aerial photography and other sources.		 C314V Central Corridor Pipeline Extension Project
0 240 480 960 Scale in Feet		FIGURE 7-2B STRUCTURES WITHIN 200 FEET* OF PERMANENT ROW BOUNDARY		
PN: 672247 CREATED BY: RD REVIEWED BY: MF				



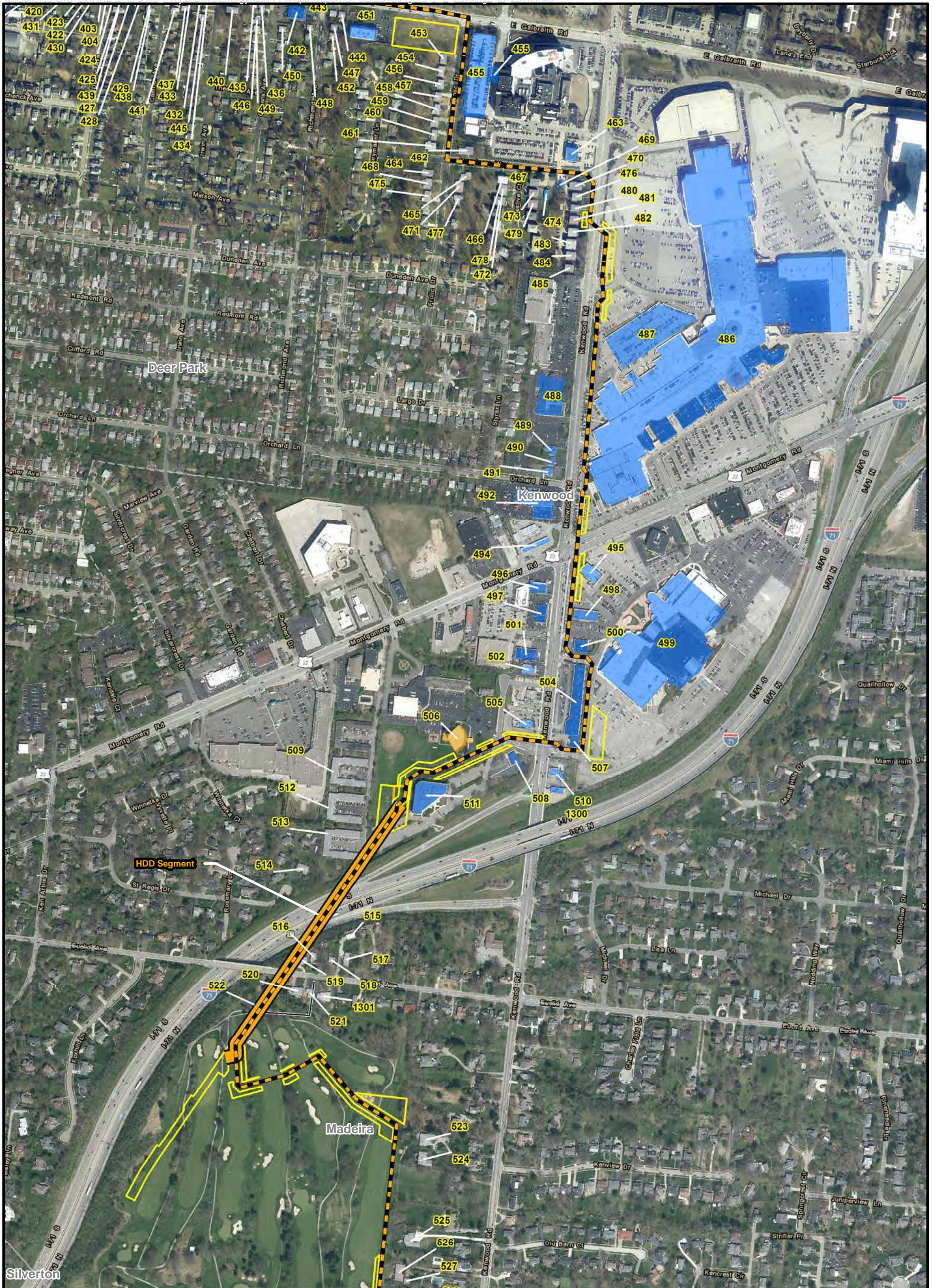
LEGEND: Preferred Route Alternate Route Existing or Future Regulation Station HDD Segment or Bore Segment Municipal Boundary Temporary Workspace Permanent Access Road Temporary Access Road Stations Building Footprint Commercial Residential Civic Building Industrial Hospital School		 BASE MAP SOURCE: CAGIS, 2017 Aerial *The structure data types are based on data from Hamilton County CAGIS files, and where warranted, specific structure types updated based on aerial photography and other sources.		 C314V Central Corridor Pipeline Extension Project
0 240 480 960 Scale in Feet		FIGURE 7-2C STRUCTURES WITHIN 200 FEET* OF PERMANENT ROW BOUNDARY		
PN: 672247 CREATED BY: RD REVIEWED BY: MF				



LEGEND: Preferred Route Alternate Route Existing or Future Regulation Station HDD Segment or Bore Segment Municipal Boundary Temporary Workspace Permanent Access Road Temporary Access Road Stations Building Footprint Commercial Residential Civic Building Industrial Hospital School		 BASE MAP SOURCE: CAGIS, 2017 Aerial *The structure data files are based on data from Hamilton County CAGIS files, and where warranted, specific structure types updated based on aerial photography and other sources.	 C314V Central Corridor Pipeline Extension Project FIGURE 7-2D STRUCTURES WITHIN 200 FEET* OF PERMANENT ROW BOUNDARY PN: 672247 CREATED BY: RD REVIEWED BY: MF	
---	--	--	---	--



LEGEND: Preferred Route Alternate Route Existing or Future Regulation Station HDD Segment or Bore Segment Municipal Boundary Temporary Workspace Permanent Access Road Temporary Access Road Stations Building Footprint Commercial Residential Civic Building Industrial Hospital School		 BASE MAP SOURCE: CAGIS, 2017 Aerial *The structure data files are based on data from Hamilton County CAGIS files, and where warranted, specific structure types updated based on aerial photography and other sources.	 DUKE ENERGY C314V Central Corridor Pipeline Extension Project FIGURE 7-2E STRUCTURES WITHIN 200 FEET* OF PERMANENT ROW BOUNDARY PN: 672247 CREATED BY: RD REVIEWED BY: MF	
0 240 480 960 Scale in Feet				



LEGEND: Preferred Route Alternate Route Existing or Future Regulation Station HDD Segment or Bore Segment Municipal Boundary Temporary Workspace Permanent Access Road Temporary Access Road Stations Building Footprint Commercial Residential Civic Building Industrial Hospital School		 BASE MAP SOURCE: CAGIS, 2017 Aerial *The structure data types are based on data from Hamilton County CAGIS files, and where warranted, specific structure types updated based on aerial photography and other sources.		 C314V Central Corridor Pipeline Extension Project FIGURE 7-2F STRUCTURES WITHIN 200 FEET* OF PERMANENT ROW BOUNDARY PN: 672247 CREATED BY: RD REVIEWED BY: MF	
0 240 480 960 Scale in Feet					



LEGEND: Preferred Route Alternate Route Existing or Future Regulation Station HDD Segment or Bore Segment Municipal Boundary Temporary Workspace Permanent Access Road Temporary Access Road Stations Building Footprint Commercial Residential Civic Building Industrial Hospital School		 N BASE MAP SOURCE: CAGIS, 2017 Aerial *The structure data types are based on data from Hamilton County CAGIS files, and where warranted, specific structure types updated based on aerial photography and other sources.	 C314V Central Corridor Pipeline Extension Project FIGURE 7-2G STRUCTURES WITHIN 200 FEET* OF PERMANENT ROW BOUNDARY PN: 672247 CREATED BY: RD REVIEWED BY: MF	
0 240 480 960 Scale in Feet				



LEGEND: Preferred Route Alternate Route Existing or Future Regulation Station HDD Segment or Bore Segment Municipal Boundary Temporary Workspace Permanent Access Road Temporary Access Road Stations Building Footprint Commercial Residential Civic Building Industrial Hospital School		 BASE MAP SOURCE: CAGIS, 2017 Aerial *The structure data types are based on data from Hamilton County CAGIS files, and where warranted, specific structure types updated based on aerial photography and other sources.	 C314V Central Corridor Pipeline Extension Project FIGURE 7-2H STRUCTURES WITHIN 200 FEET* OF PERMANENT ROW BOUNDARY PN: 672247 CREATED BY: RD REVIEWED BY: MF	
0 240 480 960 Scale in Feet				



LEGEND: Preferred Route Alternate Route Existing or Future Regulation Station HDD Segment or Bore Segment Municipal Boundary Temporary Workspace Permanent Access Road Temporary Access Road Stations Building Footprint Commercial Residential Civic Building Industrial Hospital School		 BASE MAP SOURCE: CAGIS, 2017 Aerial *The structure data types are based on data from Hamilton County CAGIS files, and where warranted, specific structure types updated based on aerial photography and other sources.	 C314V Central Corridor Pipeline Extension Project FIGURE 7-2I STRUCTURES WITHIN 200 FEET* OF PERMANENT ROW BOUNDARY PN: 672247 CREATED BY: RD REVIEWED BY: MF	
0 240 480 960 Scale in Feet				



LEGEND:

- Preferred Route
- Alternate Route
- Existing or Future Regulation Station
- HDD Segment or Bore Segment
- Municipal Boundary
- Temporary Workspace
- Permanent Access Road
- Temporary Access Road

- Building Footprint**
- Commercial
 - Residential
 - Civic Building
 - Industrial
 - Hospital
 - School

Stations

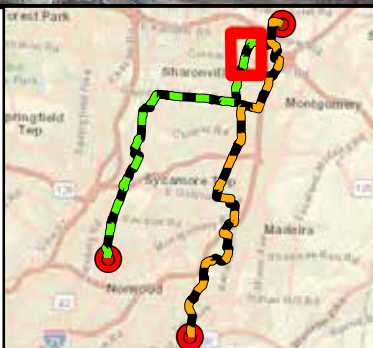


BASE MAP SOURCE:
CAGIS, 2017 Aerial

*The structure data types are based on data from Hamilton County CAGIS files, and where warranted, specific structure types updated based on aerial photography and other sources.

0 240 480 960

Scale in Feet



C314V Central Corridor Pipeline Extension Project

FIGURE 7-2J
STRUCTURES WITHIN 200 FEET*
OF PERMANENT ROW BOUNDARY

PN: 672247

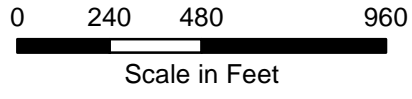
CREATED BY: RD

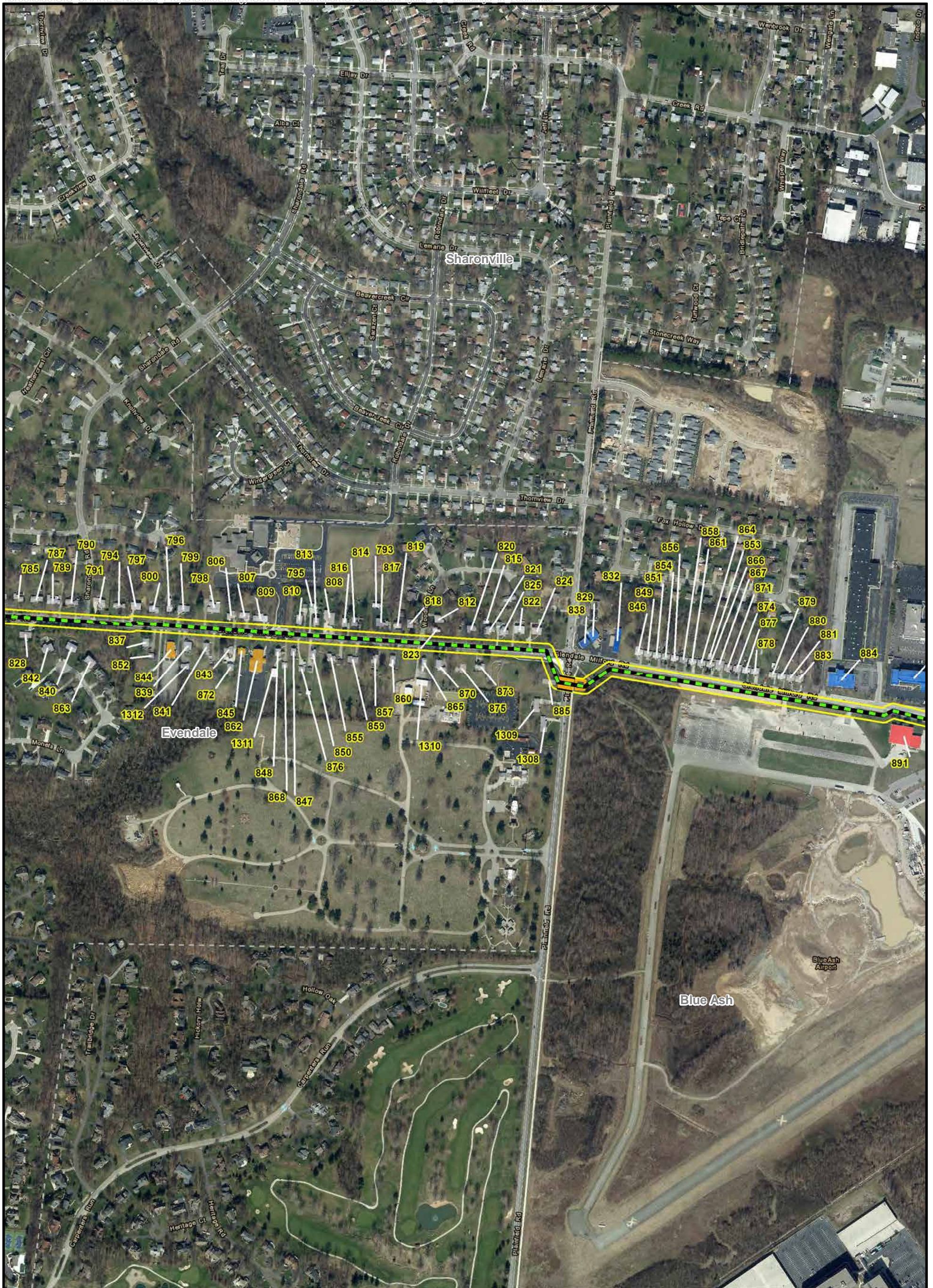
REVIEWED BY: MF



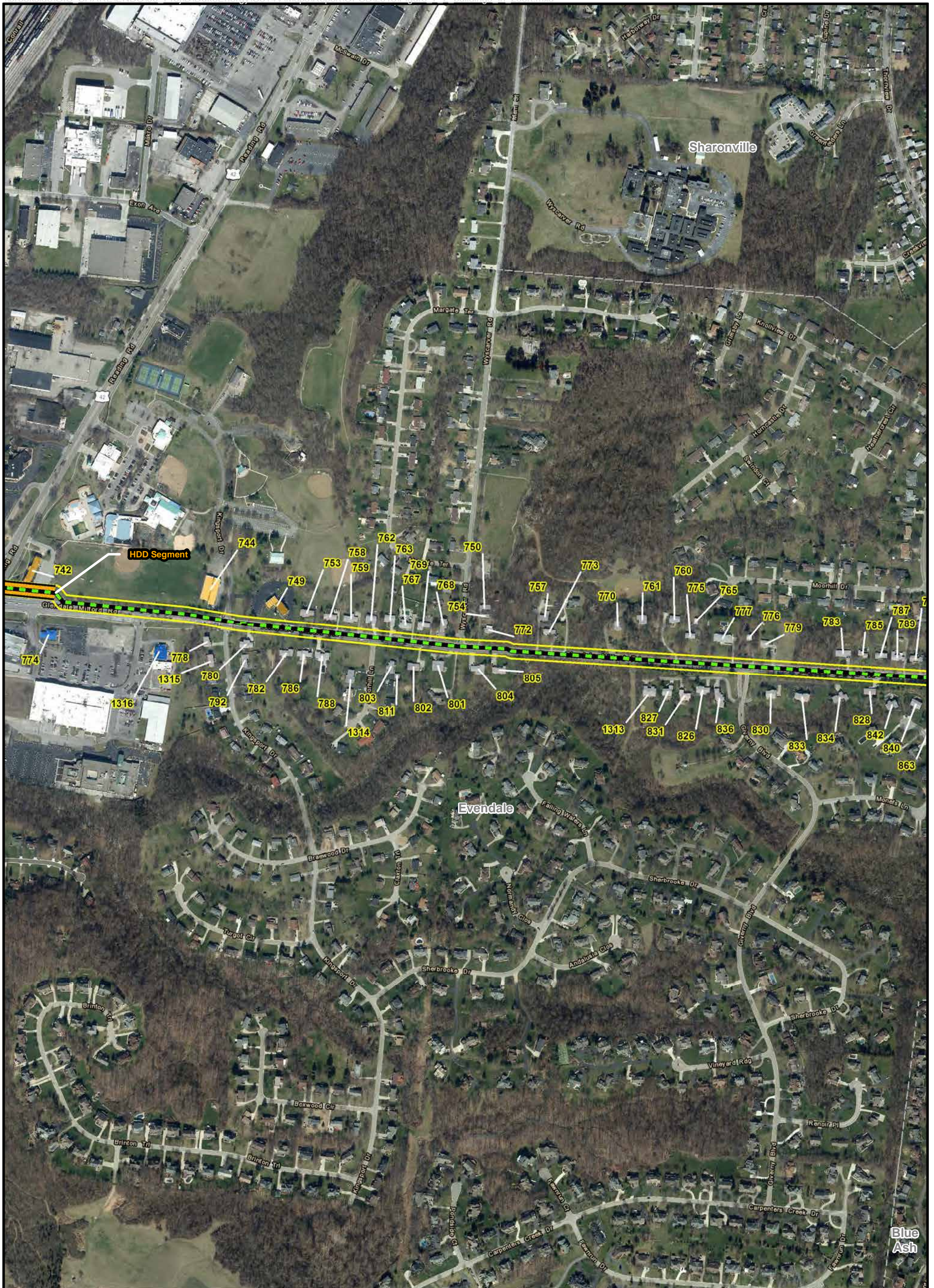


LEGEND: Preferred Route Alternate Route Existing or Future Regulation Station HDD Segment or Bore Segment Municipal Boundary Temporary Workspace Permanent Access Road Temporary Access Road Stations Building Footprint Commercial Residential Civic Building Industrial Hospital School		 N BASE MAP SOURCE: CAGIS, 2017 Aerial *The structure data types are based on data from Hamilton County CAGIS files, and where warranted, specific structure types updated based on aerial photography and other sources.	 C314V Central Corridor Pipeline Extension Project FIGURE 7-2K STRUCTURES WITHIN 200 FEET* OF PERMANENT ROW BOUNDARY PN: 672247 CREATED BY: RD REVIEWED BY: MF	
---	--	---	---	--





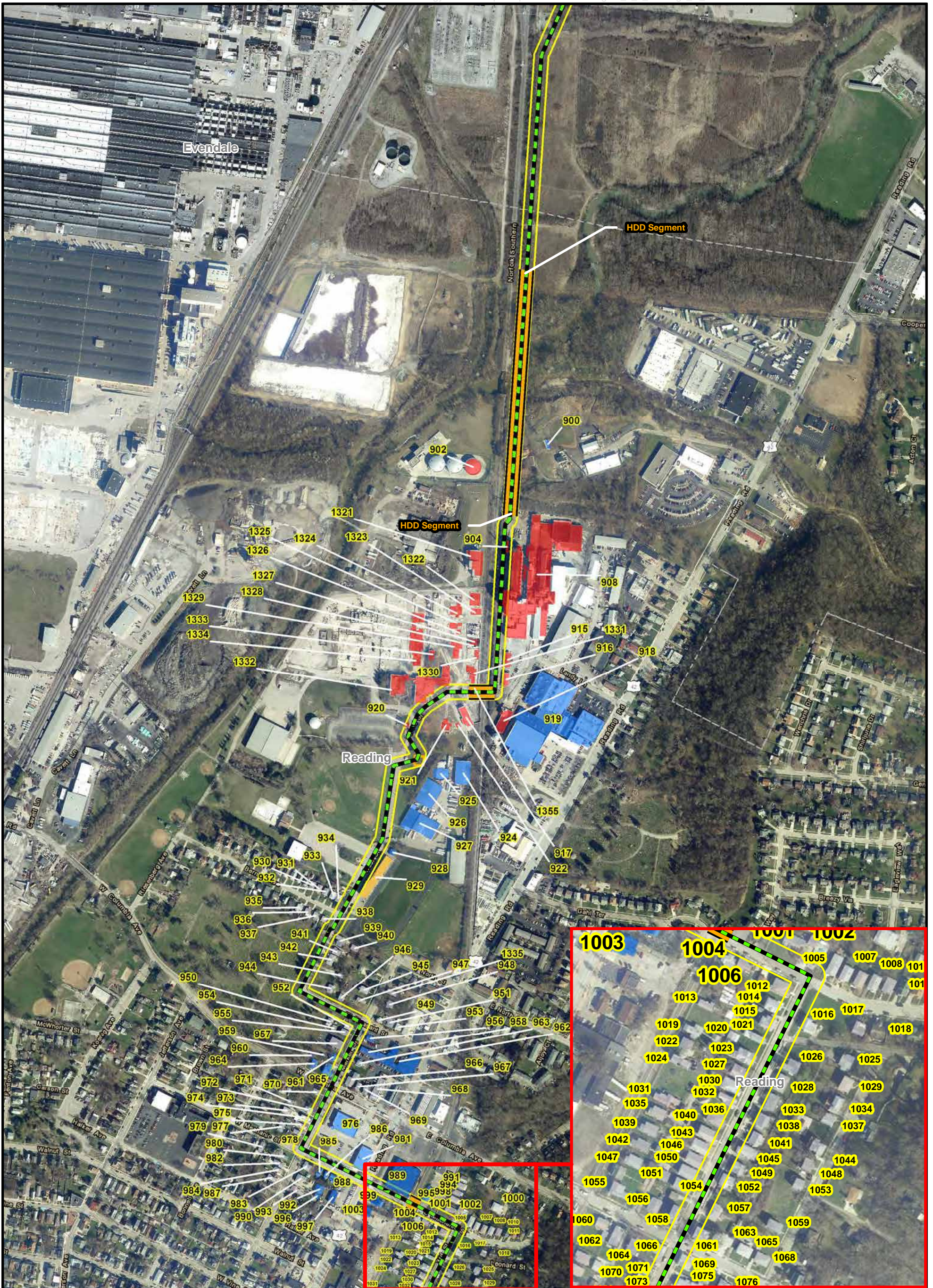
LEGEND: Preferred Route Alternate Route Existing or Future Regulation Station HDD Segment or Bore Segment Municipal Boundary Temporary Workspace Permanent Access Road Temporary Access Road Stations Building Footprint Commercial Residential Civic Building Industrial Hospital School		 N BASE MAP SOURCE: CAGIS, 2017 Aerial *The structure data types are based on data from Hamilton County CAGIS files, and where warranted, specific structure types updated based on aerial photography and other sources.		 C314V Central Corridor Pipeline Extension Project
0 240 480 960 Scale in Feet		FIGURE 7-2L STRUCTURES WITHIN 200 FEET* OF PERMANENT ROW BOUNDARY		
PN: 672247 CREATED BY: RD REVIEWED BY: MF				



LEGEND: Preferred Route Alternate Route Existing or Future Regulation Station HDD Segment or Bore Segment Municipal Boundary Temporary Workspace Permanent Access Road Temporary Access Road Stations Building Footprint Commercial Residential Civic Building Industrial Hospital School		 BASE MAP SOURCE: CAGIS, 2017 Aerial *The structure data types are based on data from Hamilton County CAGIS files, and where warranted, specific structure types updated based on aerial photography and other sources.	 DUKE ENERGY C314V Central Corridor Pipeline Extension Project FIGURE 7-2M STRUCTURES WITHIN 200 FEET* OF PERMANENT ROW BOUNDARY PN: 672247 CREATED BY: RD REVIEWED BY: MF	 C314V Central Corridor Pipeline Extension Project FIGURE 7-2M STRUCTURES WITHIN 200 FEET* OF PERMANENT ROW BOUNDARY PN: 672247 CREATED BY: RD REVIEWED BY: MF
---	--	--	--	---



LEGEND: Preferred Route Alternate Route Existing or Future Regulation Station HDD Segment or Bore Segment Municipal Boundary Temporary Workspace Permanent Access Road Temporary Access Road		Stations Building Footprint Commercial Residential Civic Building Industrial Hospital School		 BASE MAP SOURCE: CAGIS, 2017 Aerial				 C314V Central Corridor Pipeline Extension Project	
0 240 480 960 Scale in Feet		*The structure data types are based on data from Hamilton County CAGIS files, and where warranted, specific structure types updated based on aerial photography and other sources.		FIGURE 7-2N STRUCTURES WITHIN 200 FEET* OF PERMANENT ROW BOUNDARY		PN: 672247 CREATED BY: RD REVIEWED BY: MF			



LEGEND:

- Preferred Route
- Alternate Route
- Existing or Future Regulation Station
- HDD Segment or Bore Segment
- Municipal Boundary
- Temporary Workspace
- Permanent Access Road
- Temporary Access Road
- Stations
- Building Footprint**
- Commercial
- Residential
- Civic Building
- Industrial
- Hospital
- School



BASE MAP SOURCE:
CAGIS, 2017 Aerial

*The structure data types are based on data from Hamilton County CAGIS files, and where warranted, specific structure types updated based on aerial photography and other sources.



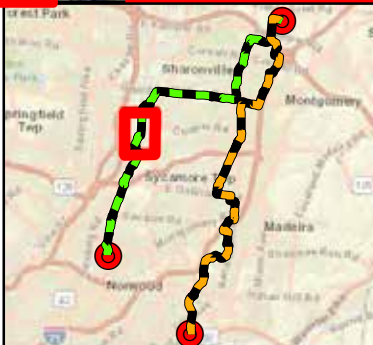
C314V Central Corridor Pipeline Extension Project

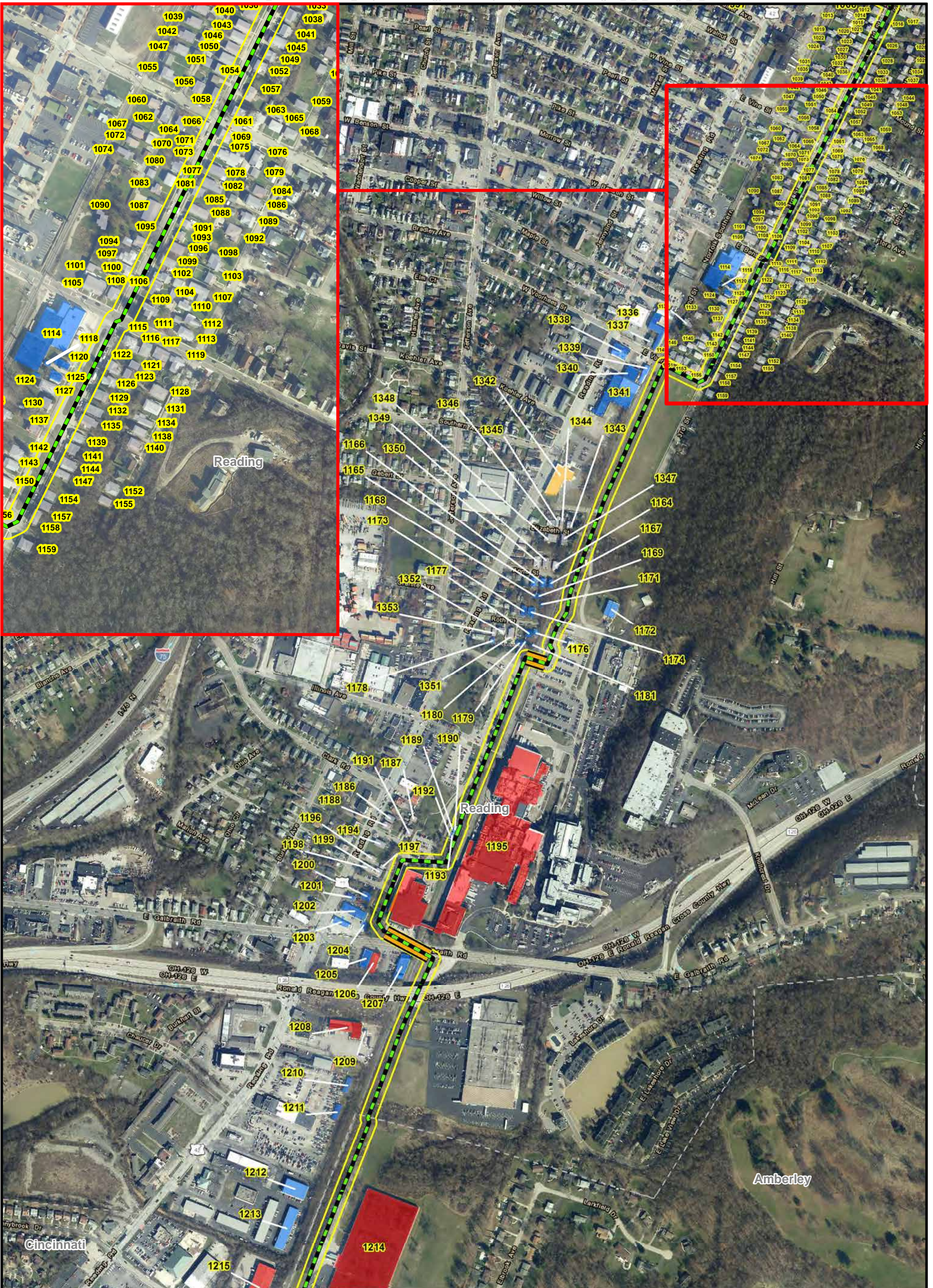
FIGURE 7-20
STRUCTURES WITHIN 200 FEET*
OF PERMANENT ROW BOUNDARY

PN: 672247

CREATED BY: RD

REVIEWED BY: MF





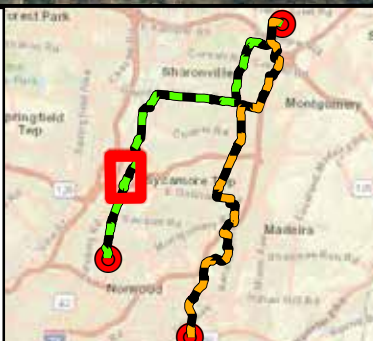
LEGEND:

- Preferred Route
- Alternate Route
- Existing or Future Regulation Station
- HDD Segment or Bore Segment
- Municipal Boundary
- Temporary Workspace
- Permanent Access Road
- Temporary Access Road
- Stations
- Building Footprint**
- Commercial
- Residential
- Civic Building
- Industrial
- Hospital
- School



BASE MAP SOURCE:
CAGIS, 2017 Aerial

*The structure data files are based on data from Hamilton County CAGIS files, and where warranted, specific structure types updated based on aerial photography and other sources.



C314V Central Corridor Pipeline Extension Project

FIGURE 7-2P
STRUCTURES WITHIN 200 FEET*
OF PERMANENT ROW BOUNDARY

PN: 672247

CREATED BY: RD

REVIEWED BY: MF





LEGEND: Preferred Route Alternate Route Existing or Future Regulation Station HDD Segment or Bore Segment Municipal Boundary Temporary Workspace Permanent Access Road Temporary Access Road Stations Building Footprint Commercial Residential Civic Building Industrial Hospital School		 N BASE MAP SOURCE: CAGIS, 2017 Aerial *The structure data types are based on data from Hamilton County CAGIS files, and where warranted, specific structure types updated based on aerial photography and other sources.	 C314V Central Corridor Pipeline Extension Project FIGURE 7-2Q STRUCTURES WITHIN 200 FEET* OF PERMANENT ROW BOUNDARY PN: 672247 CREATED BY: RD REVIEWED BY: MF
0 240 480 960 Scale in Feet			



LEGEND: Preferred Route Alternate Route Existing or Future Regulation Station HDD Segment or Bore Segment Municipal Boundary Temporary Workspace Permanent Access Road Temporary Access Road Stations Building Footprint Commercial Residential Civic Building Industrial Hospital School		 BASE MAP SOURCE: CAGIS, 2017 Aerial *The structure data types are based on data from Hamilton County CAGIS files, and where warranted, specific structure types updated based on aerial photography and other sources.	 DUKE ENERGY C314V Central Corridor Pipeline Extension Project FIGURE 7-2R STRUCTURES WITHIN 200 FEET* OF PERMANENT ROW BOUNDARY PN: 672247 CREATED BY: RD REVIEWED BY: MF
0 240 480 960 Scale in Feet			