



155 East Broad Street  
20<sup>th</sup> Floor  
Columbus, Ohio, 43215

o: 614-222-1330  
f: 614-222-1337

August 14, 2019

Ms. Tanowa M. Troupe, Secretary  
Ohio Power Siting Board  
Docketing Division  
180 East Broad Street, 11<sup>th</sup> Floor  
Columbus, Ohio 43215

Re: PUCO Case Nos. 14-375-GA-RDR, et al., In the Matter of the Application of Duke Energy Ohio, Inc., for an Adjustment to Rider MGP Rates

Dear Ms. Troupe:

On Monday, August 12, 2019, Duke Energy Ohio, Inc. (Company) filed Comments to the Staff Report in the above-referenced case. It has since been discovered that Attachment 2 was inadvertently not filed with the Comments. The Company is herewith filing Attachment 2 as a part of the Comments.

Should you have any questions please feel free to contact me.

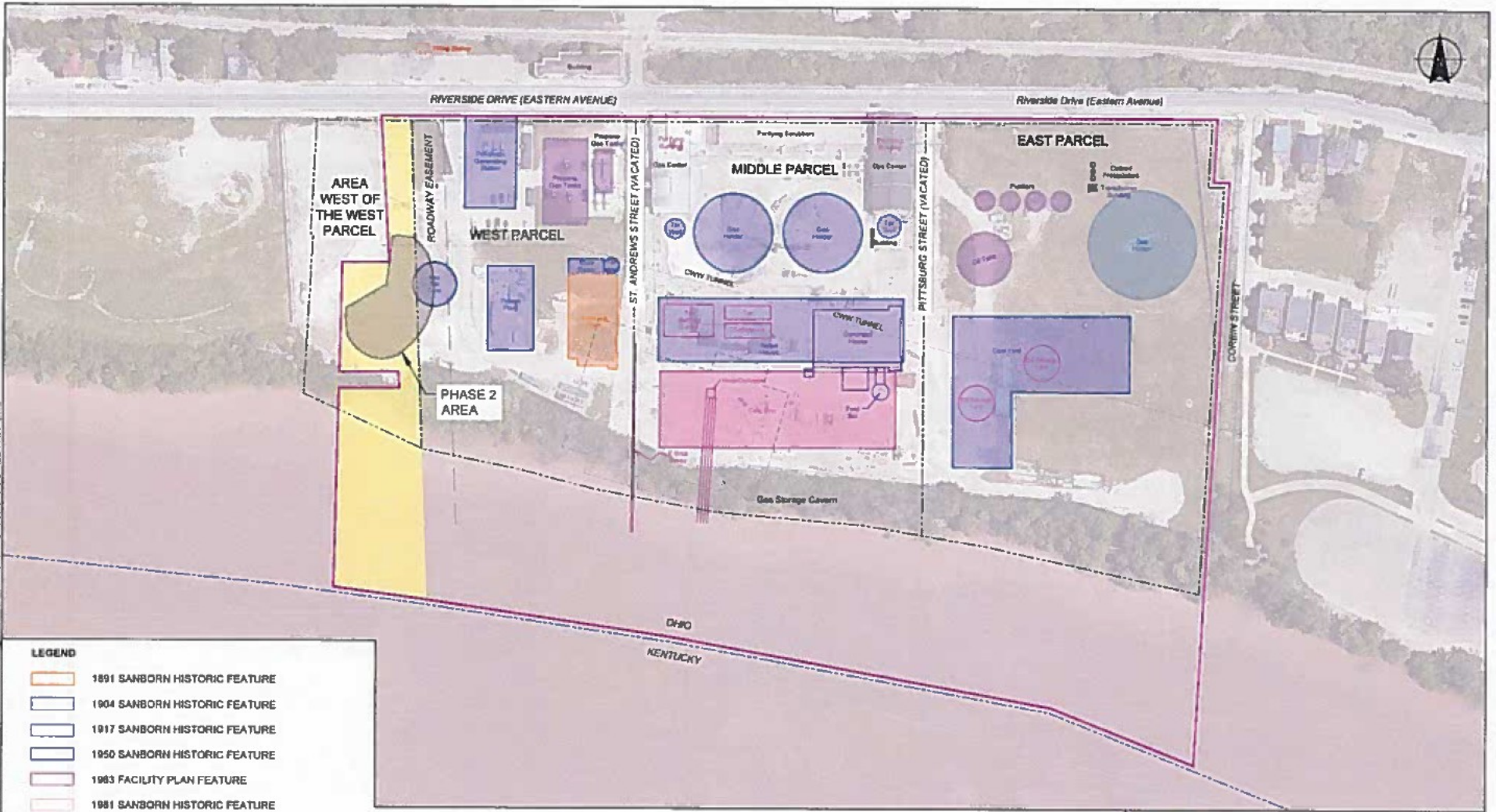
Respectfully submitted,

/s/ Emily A. Olive, CP

Emily A. Olive  
Certified Paralegal

cc: Nicci Crocker

GARDNER, ZACHARY    Printed: 10/22/2018 3:59 PM    Layer: 000  
 G:\PROJECTS\1806\_Duke\_Energy\_Ohio\_East\_End\_Gas\_Works\1806\_EAST\_END\_GAS\_WORKS\1806\_EAST\_END\_GAS\_WORKS\MAPS\1806\_MAP\_1.MXD



LEGEND	
	1891 SANBORN HISTORIC FEATURE
	1904 SANBORN HISTORIC FEATURE
	1917 SANBORN HISTORIC FEATURE
	1950 SANBORN HISTORIC FEATURE
	1983 FACILITY PLAN FEATURE
	1981 SANBORN HISTORIC FEATURE
	OHIO / KENTUCKY STATE LINE (APPROX. MEAN LOW WATER LINE PRIOR TO MARKLAND DAM)
	DUKE UPLAND REMEDIATION PARCELS
	REMEDICATION LIMITS
	CG&E/DUKE PROPERTY LIMIT (1983)

**NOTE**

1. PROPERTY LIMITS FROM 1983 BASED ON CINCINNATI GAS & ELECTRIC COMPANY PLAN TITLED "LOCATION PLAN MAJOR FACILITIES DATED 25 MARCH 1983.
2. AERIAL IMAGE PROVIDED ELECTRONICALLY BY GOOGLE EARTH PRO AND DATED MAY 2017.

PRIVILEGED & CONFIDENTIAL  
 PREPARED AT THE REQUEST  
 OF LEGAL COUNSEL



**HALEY ALDRICH**  
 DUKE ENERGY OHIO, EAST END GAS WORKS  
 2881 RIVERSIDE DRIVE  
 CINCINNATI, OH

**PROPERTY MAP**

SCALE AS SHOWN  
 OCTOBER 2018

**FIGURE 1**