



155 East Broad Street
20th Floor
Columbus, Ohio, 43215

o: 614-222-1334
f: 614-222-1337

January 3, 2017

VIA ELECTRONIC FILING

Patrick Donlon
Ohio Power Siting Board Docketing Division
180 East Broad Street, 11th Floor
Columbus, Ohio 43215-3716

Re: *Duke Energy Ohio C314V Central Corridor Pipeline Extension Project*
Case No. 16-253-GA-BTX

Dear Mr. Donlon:

Duke Energy Ohio, Inc., (Duke Energy Ohio) filed its Application with the Ohio Power Siting Board (Board) on September 13, 2016. On page 8-2 of its Application, Duke Energy Ohio committed to file supplemental ecological field survey results for select properties on the Alternate Route by October 17, 2016. Duke Energy Ohio subsequently filed a letter, on October 18, 2016, stating that this additional ecological information would be filed once complete, as the Board's review of the application was on hold per the October 6, 2016, entry concerning the requirement for a fourth public meeting. The purpose of this letter is to submit the ecological survey results of select remaining properties along the southern end of the Alternate Route.

Duke Energy's environmental consultant surveyed additional properties along an approximate 1.5-mile section of the Alternate Route on various dates from the end of October through December 2016. This section of the Alternate Route parallels the Norfolk Southern Railroad. The purpose of the survey, as detailed in Section 4906-5-08 of the Application, was to ascertain information and observations of any water habitat features (streams, wetlands, ponds) and other potentially sensitive terrestrial habitats. The survey was performed on select properties within a 280-foot wide corridor centered on the proposed Alternate Route, as illustrated in Figures 8-3H through 8-3J.

The ecological survey protocols followed the methodology outlined in Section 4906-5-08 for delineating water features, field evaluation, and documentation. Tables 8-2 and 8-3 summarize the streams and wetlands observed on the additional properties, including the extent of each within the field survey corridor and the planned construction work area (CWA). The length of wetlands to be crossed by the pipeline centerline within the area covered by this addendum is limited to an estimated 2 feet (edge of a wetland). Approximately 0.2 acres of wetland are located within the planned CWA for the area reviewed for this addendum. The total acreage of wetlands located within the survey corridor of the Alternate Route is approximately 0.46 acres. This 0.46 acres of wetland in the survey corridor covered in this addendum represents approximately 10 percent of the total acreage of wetlands along the entire Alternate Route survey corridor.

One of the six streams identified in this study area would be crossed by the centerline of the pipeline. Approximately 376 linear feet of stream are located within the planned CWA for the area reviewed for this addendum. The total length of streams located within the survey corridor of this specific study area is approximately 766 linear feet. This 766 linear feet of streams in the 280-foot wide survey corridor in this addendum represents approximately 12 percent of the total stream footage along the entire Alternate Route survey corridor.

As noted in the footnotes to Tables 8-2 and 8-3, the extent of one stream and one wetland in the area located on Norfolk Southern Railroad property could not be fully evaluated. These features will be delineated once Norfolk Southern provides approval for safe access to this active railroad, if deemed necessary by the Board in the event that the Alternate Route is to be certificated versus the Preferred Route. Additionally, a parcel owned by the Cincinnati Port Authority is an active construction site, including ongoing, extensive soil grading work in preparation for construction of a building. This property is adjacent to the railroad corridor. This property was not directly field reviewed as surface grading may result in future modifications to any water features that may be present.

Sincerely,

/s/ Jeanne W. Kingery

Jeanne W. Kingery

Associate General Counsel

TABLE 8-2

Additional Delineated Wetlands within the Alternate Route Environmental Survey Corridor and Construction Work Area

Wetland Identifier	Route	Figure	Cowardin Wetland Type ^a	ORAM Score	ORAM Category	Length Crossed by Centerline (feet) ^d	Acreage within Survey Corridor ^b	Acreage within Construction Work Area ^c
ALTERNATE ROUTE WETLANDS								
G-W400	Alternate	Sheet 8-3I	PEM/PSS/PFO	33.5	1 or 2 gray zone	2	0.14	0.14
G-W401	Alternate	Sheet 8-3I	PEM (retention basin) / PSS	27.5	1	0	0.17	0.06
G-W600	Alternate	Sheet 8-3I	PEM	16	1	0	0.10	0
G-W601	Alternate	Sheet 8-3I	PEM	16	1	0	0.05	0
G-W603 ^e	Alternate	Sheet 8-3I	PEM or PSS	-	-	0	-	-
TOTAL						2	0.46	0.20

a Wetland Type: PEM – palustrine emergent, PSS – palustrine scrub/shrub, PFO – palustrine forested.

b The width of the survey corridor = 280 feet wide.

c The width of the planned construction work area (CWA) = 80 feet wide.

d All wetlands noted above are planned to be crossed by open cut methods.

e Wetland G-W603 was observed from the property line; a detailed wetland delineation will be performed in the future, as required. The information and measurements provided are estimations based on field observations, aerial photographs, and topographic maps.

TABLE 8-3

Additional Streams within the Alternate Route Environmental Survey Corridor and Construction Work Area

Stream ID / Waterbody Name	Route	Figure	Flow Regime	Top of Bank Width (feet)	Maximum Pool Depth (in.)	Form	HHEI/QHEI Score	Ohio EPA Aquatic Life Use Designation	PHWH Class (HHEI)/ Narrative Rating (QHEI)	Crossed by Centerline ^c	Length (linear feet) within Survey Corridor ^a	Length (linear feet) within Construction Work Area ^b
G-S400	Alternate	Sheet 8-3I	Ephemeral	3	0	HHEI	11	N/A	Class I PHWH	N	174	174
G-S401	Alternate	Sheet 8-3I	Ephemeral	4	0	HHEI	21	N/A	Class I PHWH	N	65	65
G-S402	Alternate	Sheet 8-3I	Ephemeral	3	0	HHEI	14	N/A	Class I PHWH	N	13	13
G-S403	Alternate	Sheet 8-3H	Intermittent	16	4	HHEI	73	N/A	Class I PHWH	Y	306	104
G-S404	Alternate	Sheet 8-3I	Perennial	32	33	QHEI	70	N/A	Excellent	N	108	0
G-S405 ^d	Alternate	Sheet 8-3I	Intermittent	-	-	-	-	N/A	-	N	100	20
TOTAL											766 feet	376 feet

- a The width of the survey corridor was 280 feet wide.
- b The width of the planned construction work area (CWA) = 80 feet wide.
- c Unless noted in the “Crossed by Centerline” column, the planned crossing method is open cut trench (which is described in Section 4906-5-05 (B) of this application).
- d Stream G-S405 was observed from the property line; a detailed stream assessment will be performed in the future, as required. The information and measurements provided are estimations based on field observations, aerial photographs and topographic maps.



LEGEND:

- Station
- Alternate Route
- Preliminary HDD Entry/Exit Location
- Ecological Field Survey Corridor - 280 feet wide
- Delineated Stream
- NHD Stream
- NWI Wetland
- Identified Stream
- Potential Wetland Location
- Delineated Pond
- Delineated Wetlands**
- Palustrine Emergent
- Palustrine Forested
- Palustrine Scrub Shrub

BASE MAP SOURCE:
NAIP 2015

SPATIAL DATA SOURCES:
NHD Streams - National Hydrography Dataset
NWI Wetlands - US Fish and Wildlife Service

0 500 1,000

Scale in Feet



C314V Central
Corridor Pipeline
Extension Project

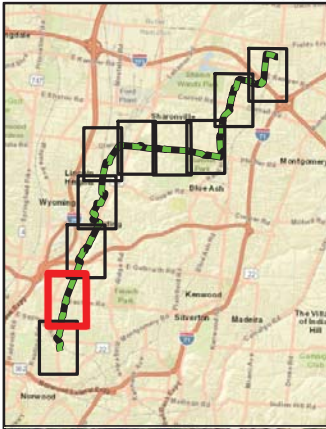
**FIGURE 8-3H (ADDENDUM),
ALTERNATE ROUTE
WETLAND AND WATERBODIES
DELINEATION MAP**

PN: 672247

CREATED BY: TH

REVIEWED BY: MF





LEGEND:

- Station
- Alternate Route
- Preliminary HDD Entry/Exit Location
- Ecological Field Survey Corridor - 280 feet wide
- Delineated Stream
- NHD Stream
- NWI Wetland
- Identified Stream
- Potential Wetland Location
- Delineated Pond
- Delineated Wetlands**
- Palustrine Emergent
- Palustrine Forested
- Palustrine Scrub Shrub

BASE MAP SOURCE:
NAIP 2015

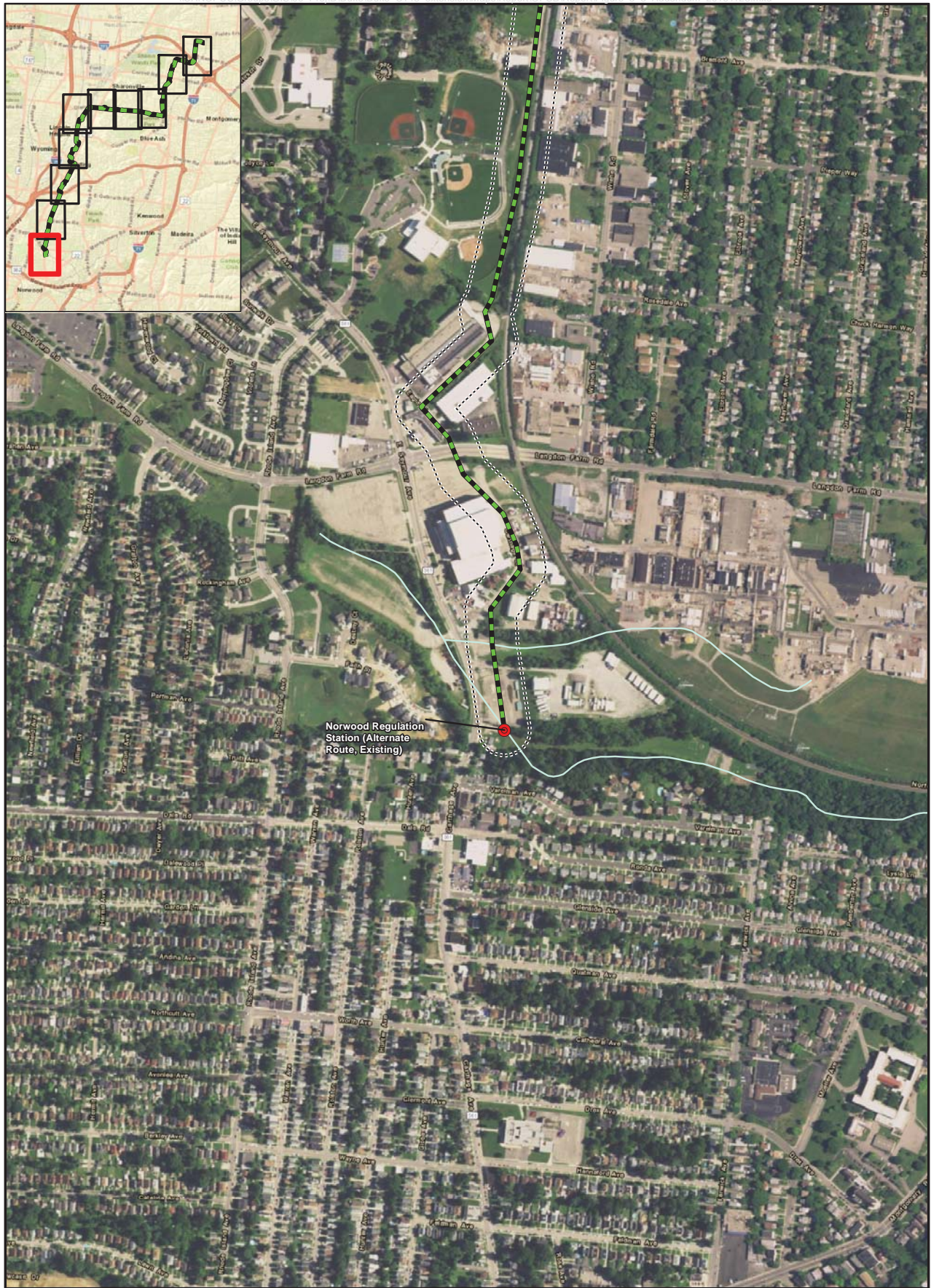
SPATIAL DATA SOURCES:
NHD Streams - National Hydrography Dataset
NWI Wetlands - US Fish and Wildlife Service

0 500 1,000

Scale in Feet



	C314V Central Corridor Pipeline Extension Project
	FIGURE 8-31 (ADDENDUM), ALTERNATE ROUTE WETLAND AND WATERBODIES DELINEATION MAP
PN: 672247 CREATED BY: TH REVIEWED BY: MF	



Norwood Regulation Station (Alternate Route, Existing)

LEGEND:

- Station
- Alternate Route
- Preliminary HDD Entry/Exit Location
- Ecological Field Survey Corridor - 280 feet wide
- Delineated Stream
- NHD Stream
- NWI Wetland
- Identified Stream
- Potential Wetland Location
- Delineated Pond
- Delineated Wetlands**
- Palustrine Emergent
- Palustrine Forested
- Palustrine Scrub Shrub

BASE MAP SOURCE:
NAIP 2015

SPATIAL DATA SOURCES:
NHD Streams - National Hydrography Dataset
NWI Wetlands - US Fish and Wildlife Service



	C314V Central Corridor Pipeline Extension Project
<p>FIGURE 8-3J (ADDENDUM), ALTERNATE ROUTE WETLAND AND WATERBODIES DELINEATION MAP</p>	
PN: 672247	
CREATED BY: TH	
REVIEWED BY: MF	