

Garver Substation Project Area

**PROJECT LOCATION**

BUTLER COUNTY, OHIO

REFERENCE:  
 ROUTE CENTERLINE AND FACILITY  
 Duke Energy  
 USGS 7.5' TOPOGRAPHIC QUADRANGLES  
 ESRI's Online USA Topo, accessed 11/9/2018  
 ESRI's USA Major Roads, accessed 11/9/2018

- Roads
- Interstate
- StudyArea

0 5,000  
 Feet

**FIGURE 1**  
 Project Location Map

Agency Coordination

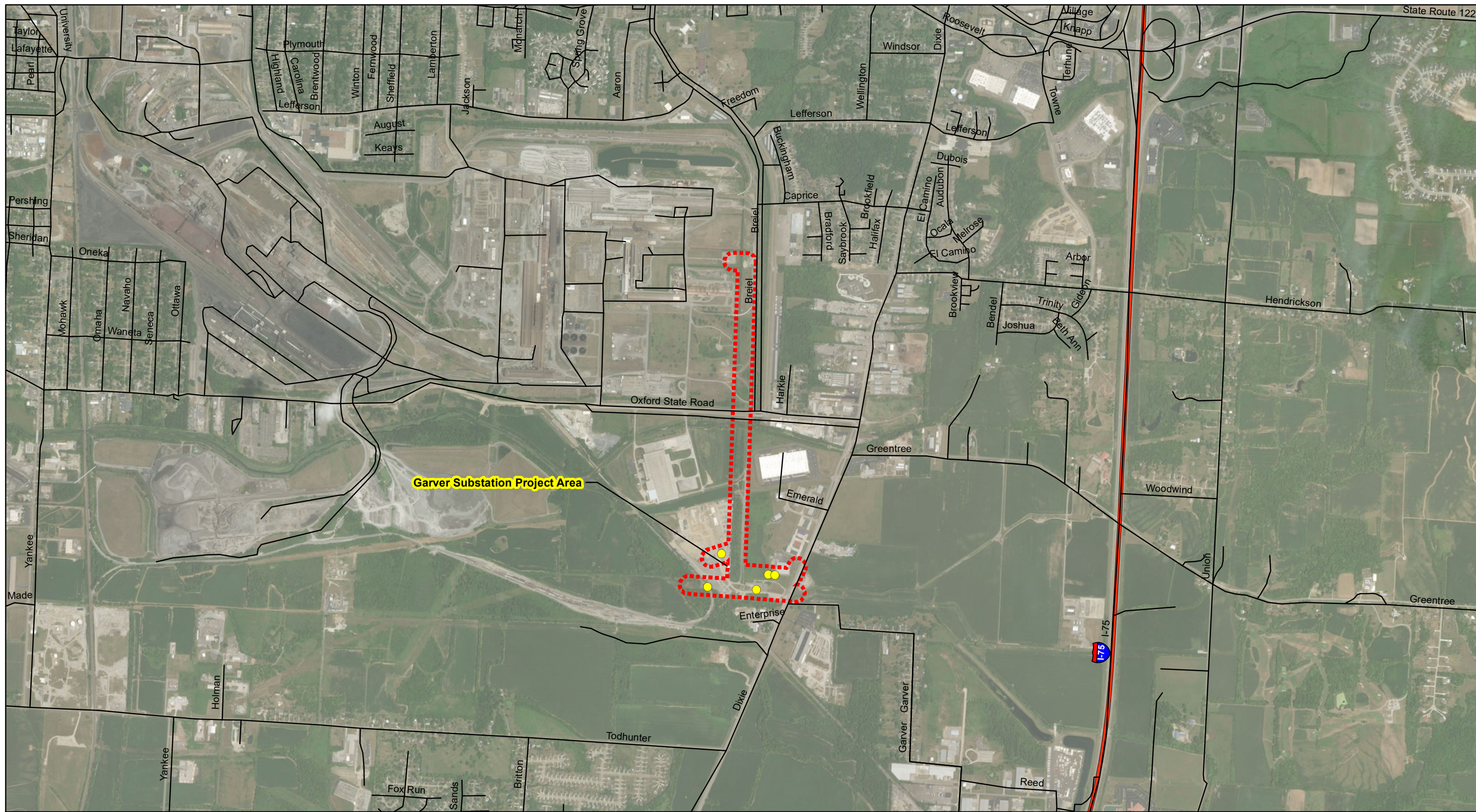
Garver Substation

---

DRAWN BY: DKT  
 CHECKED: CAJ

DATE: 11/9/2018  
 APPROVED: CAJ





**PROJECT LOCATION**

BUTLER COUNTY, OHIO

REFERENCE:  
 ROUTE CENTERLINE AND FACILITY  
 Duke Energy  
 USGS 7.5' TOPOGRAPHIC QUADRANGLES  
 ESRI's Online USA Topo, accessed 11/9/2018  
 ESRI's USA Major Roads, accessed 11/9/2018

- Duke Structure
- Roads
- Interstate
- ⋯ Study Area

0 1,000 2,000 Feet

**FIGURE 2**  
 Project Aerial Map  
 Agency Coordination  
 Garver Substation

DRAWN BY: DKT  
 CHECKED: CAJ

DATE: 11/9/2018  
 APPROVED: CAJ





Photo 1. ROW Corridor, Secondary Growth Forest, facing Northwest



Photo 2. ROW Corridor, Forested Wetland, facing North.



Photo 3. ROW Corridor, Secondary Growth Forest, Potential Roost Tree.



Photo 4. ROW Corridor, Secondary Growth Forest, Dead Standing.