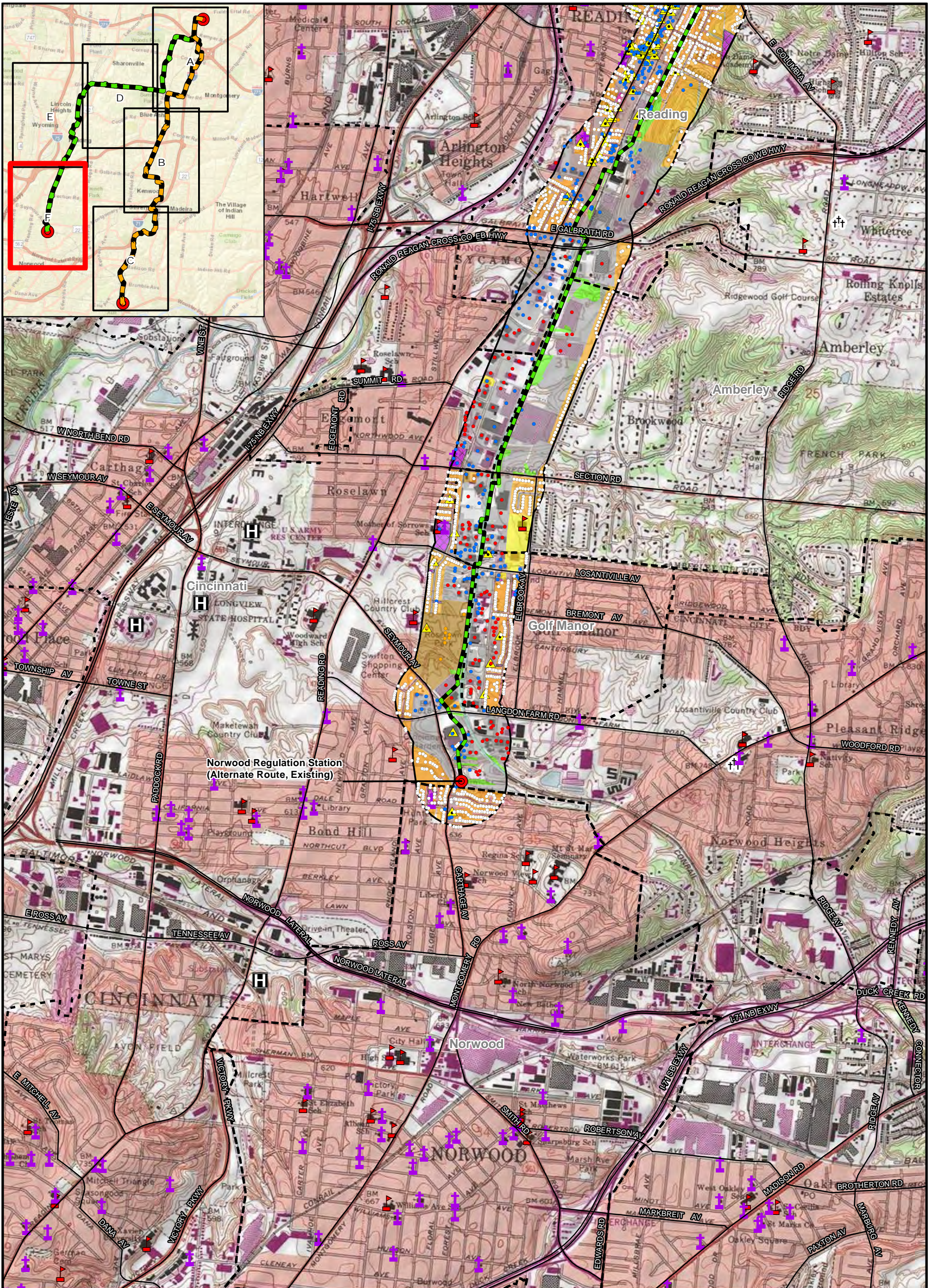


| | | | | | | | | | |
|--|--|---|--|--|--|---|--|---|--|
| LEGEND: Stations (Existing and Proposed) Airports/Heliports Cemeteries Church Hospitals Schools Historic Structures Preferred Route Alternate Route 1,000 Foot Buffer Around Preferred and Alternate Route Municipal Boundary Station | | Structures Commercial Residential Civic Building Industrial Education Institutional Mixed Use Parks and recreation Residential Undefined Woodlots | | Landuse Delineated Stream Delineated Wetland Delineated Pond Commercial/Industrial Education Institutional Mixed Use Parks and recreation Residential Undefined Woodlots | | BASE MAP SOURCE: USGS 7.5-minute Topographic Quadrangle Cincinnati East 1982, Glendale 1982, Madeira 1983, Mason 1982 | | C314V Central Corridor Pipeline Extension Project | |
| | | Scale In Feet 0 2,000 4,000 | | FIGURE 7-1E LAND USE MAP | | PN: 672247 CREATED BY: TH REVIEWED BY: MF | | | |



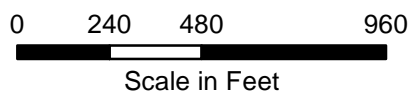
| | | | | | | | | | |
|--|--|--|--|---|--|------------------------------------|--|---|--|
| LEGEND: Stations (Existing and Proposed) Cemeteries Church Hospitals Schools Historic Structures Airports/Heliports Road Preferred Route Alternate Route 1,000 Foot Buffer Around Preferred and Alternate Route Municipal Boundary Station | | Structures Commercial Residential Civic Building Industrial Commercial/Industrial Education Institutional Mixed Use Parks and recreation Residential Undefined Woodlots | | Landuse Delineated Stream Delineated Wetland Delineated Pond BASE MAP SOURCE: USGS 7.5-minute Topographic Quadrangle Cincinnati East 1982, Glendale 1982, Madeira 1983, Mason 1982 | | Scale In Feet 0 2,000 4,000 | | C314V Central Corridor Pipeline Extension Project | |
| PN: 672247 CREATED BY: TH REVIEWED BY: MF | | | | | | | | | |

FIGURE 7-1F
LAND USE MAP



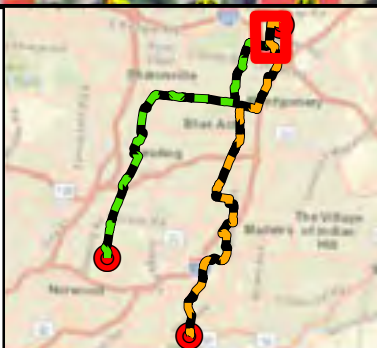
LEGEND:

- Preferred Route
- Alternate Route
- Existing or Future Regulation Station
- HDD Entry/Exit
- Municipal Boundary
- Temporary Workspace
- Permanent Access Road
- Temporary Access Road
- Stations
- Building Footprint**
- Commercial
- Residential
- Civic Building
- Industrial
- Hospital
- School



BASE MAP SOURCE:
USGS 7.5-minute Topographic Quadrangle
Cincinnati East 1982, Glendale 1982
Madeira 1983, Mason 1982

*The structure data types are based on data from Hamilton County CAGIS files, and where warranted, specific structure types updated based on aerial photography and other sources.



C314V Central Corridor Pipeline Extension Project

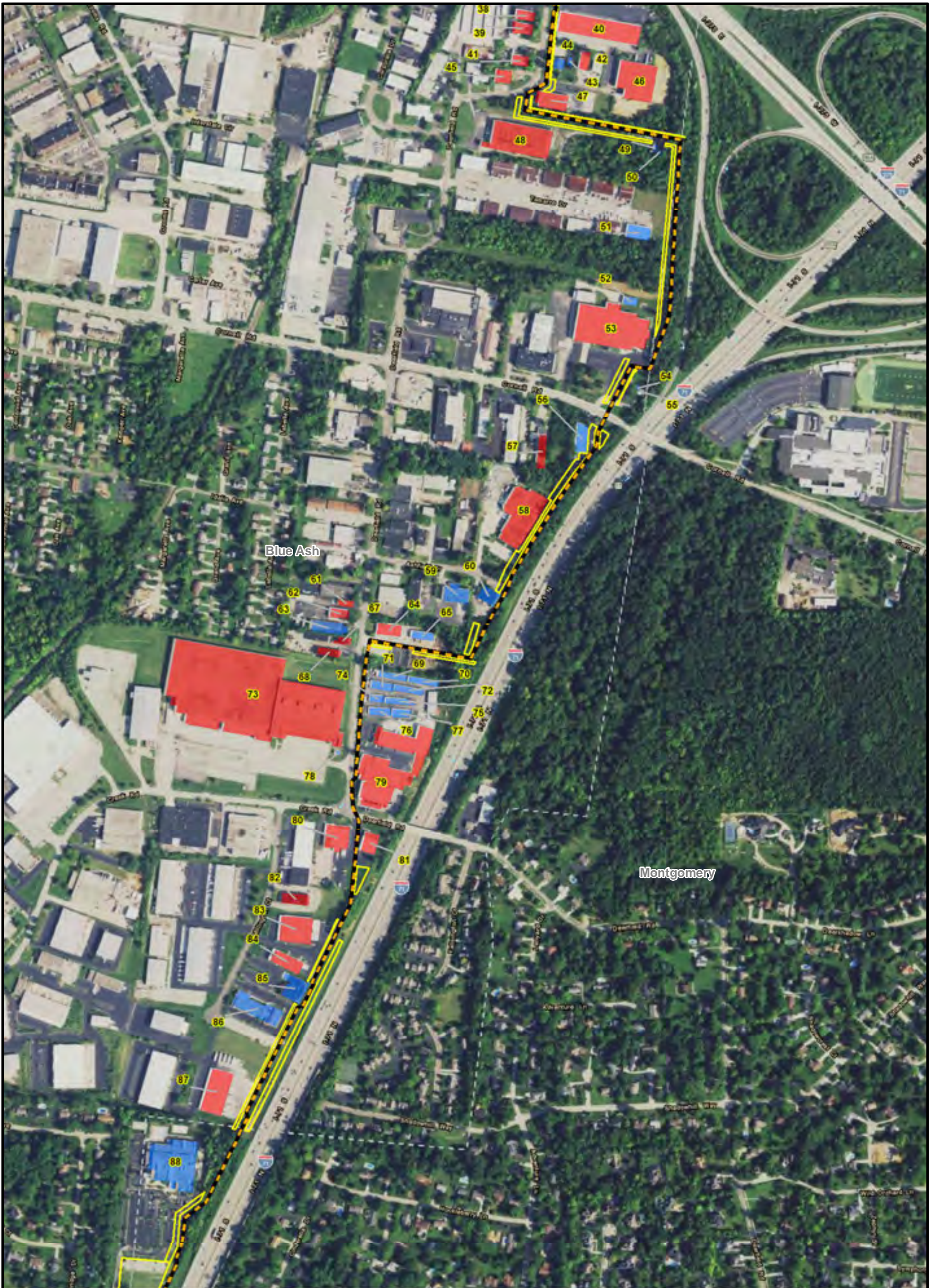
FIGURE 7-2A
STRUCTURES WITHIN 200 FEET*
OF PERMANANT ROW BOUNDARY

PN: 672247

CREATED BY:

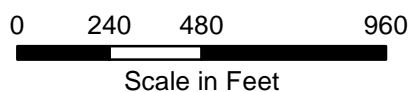
REVIEWED BY:





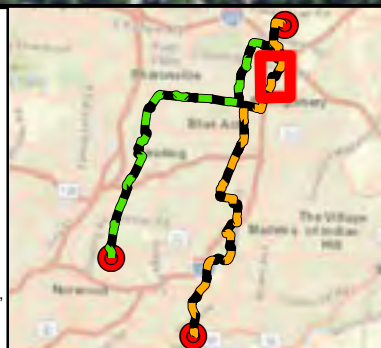
LEGEND:

- Preferred Route
- Alternate Route
- Existing or Future Regulation Station
- HDD Entry/Exit
- Municipal Boundary
- Temporary Workspace
- Permanent Access Road
- Temporary Access Road
- Stations
- Building Footprint**
- Commercial
- Residential
- Civic Building
- Industrial
- Hospital
- School



BASE MAP SOURCE:
USGS 7.5-minute Topographic Quadrangle
Cincinnati East 1982, Glendale 1982
Madeira 1983, Mason 1982

*The structure data types are based on data from Hamilton County CAGIS files, and where warranted, specific structure types updated based on aerial photography and other sources.



C314V Central
Corridor Pipeline
Extension Project

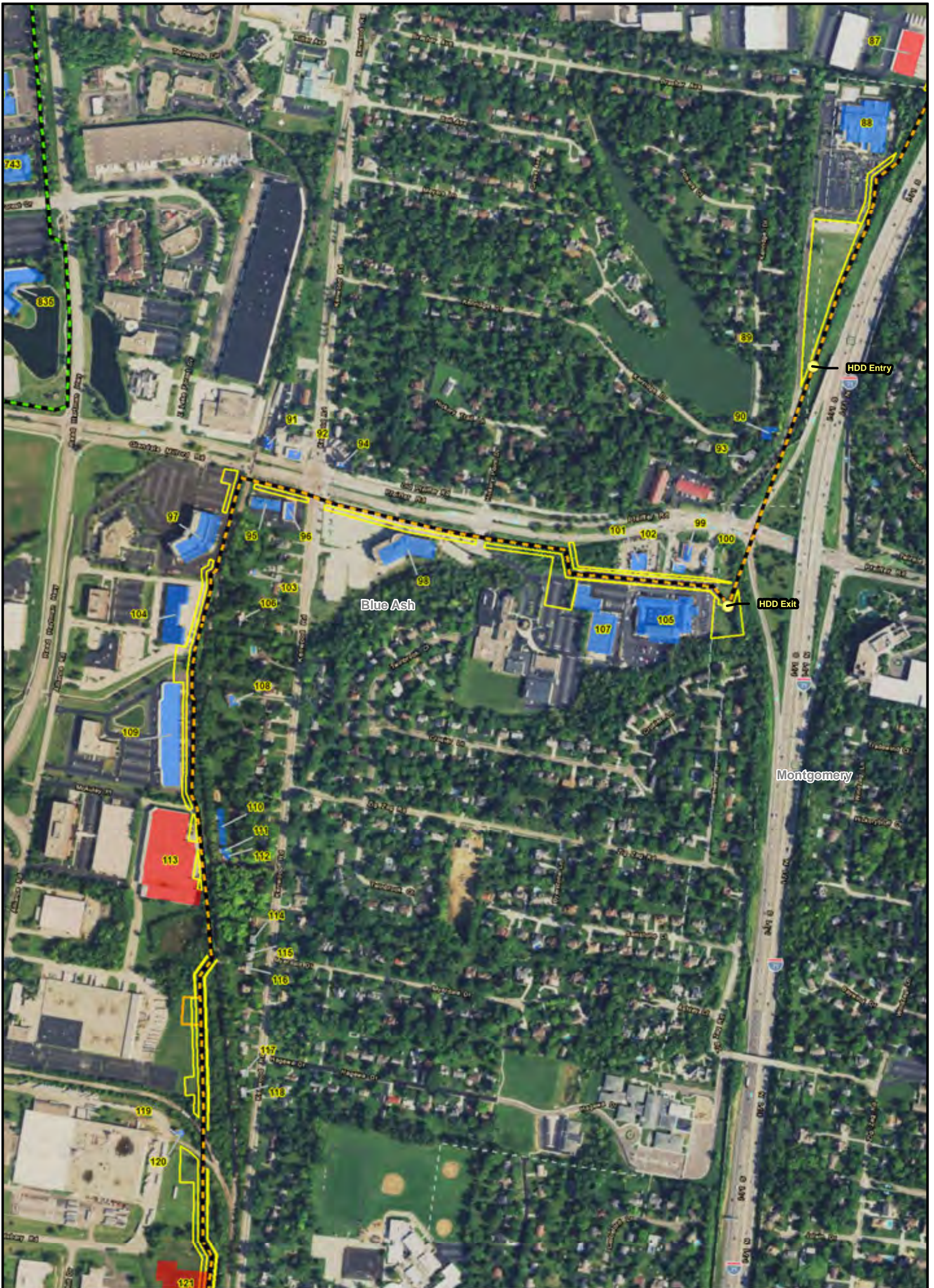
FIGURE 7-2B
STRUCTURES WITHIN 200 FEET*
OF PERMANANT ROW BOUNDARY

PN: 672247

CREATED BY:

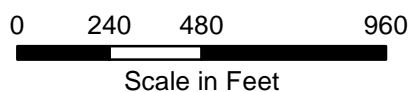
REVIEWED BY:





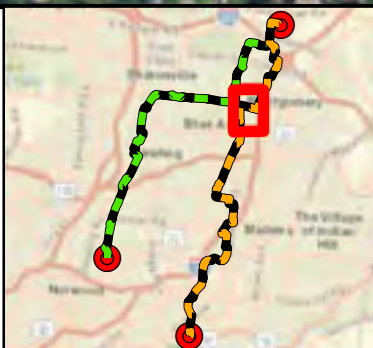
LEGEND:

- Preferred Route
- Alternate Route
- Existing or Future Regulation Station
- HDD Entry/Exit
- Municipal Boundary
- Temporary Workspace
- Permanent Access Road
- Temporary Access Road
- Stations
- Building Footprint**
- Commercial
- Residential
- Civic Building
- Industrial
- Hospital
- School



BASE MAP SOURCE:
USGS 7.5-minute Topographic Quadrangle
Cincinnati East 1982, Glendale 1982
Madeira 1983, Mason 1982

*The structure data types are based on data from Hamilton County CAGIS files, and where warranted, specific structure types updated based on aerial photography and other sources.



C314V Central Corridor Pipeline Extension Project

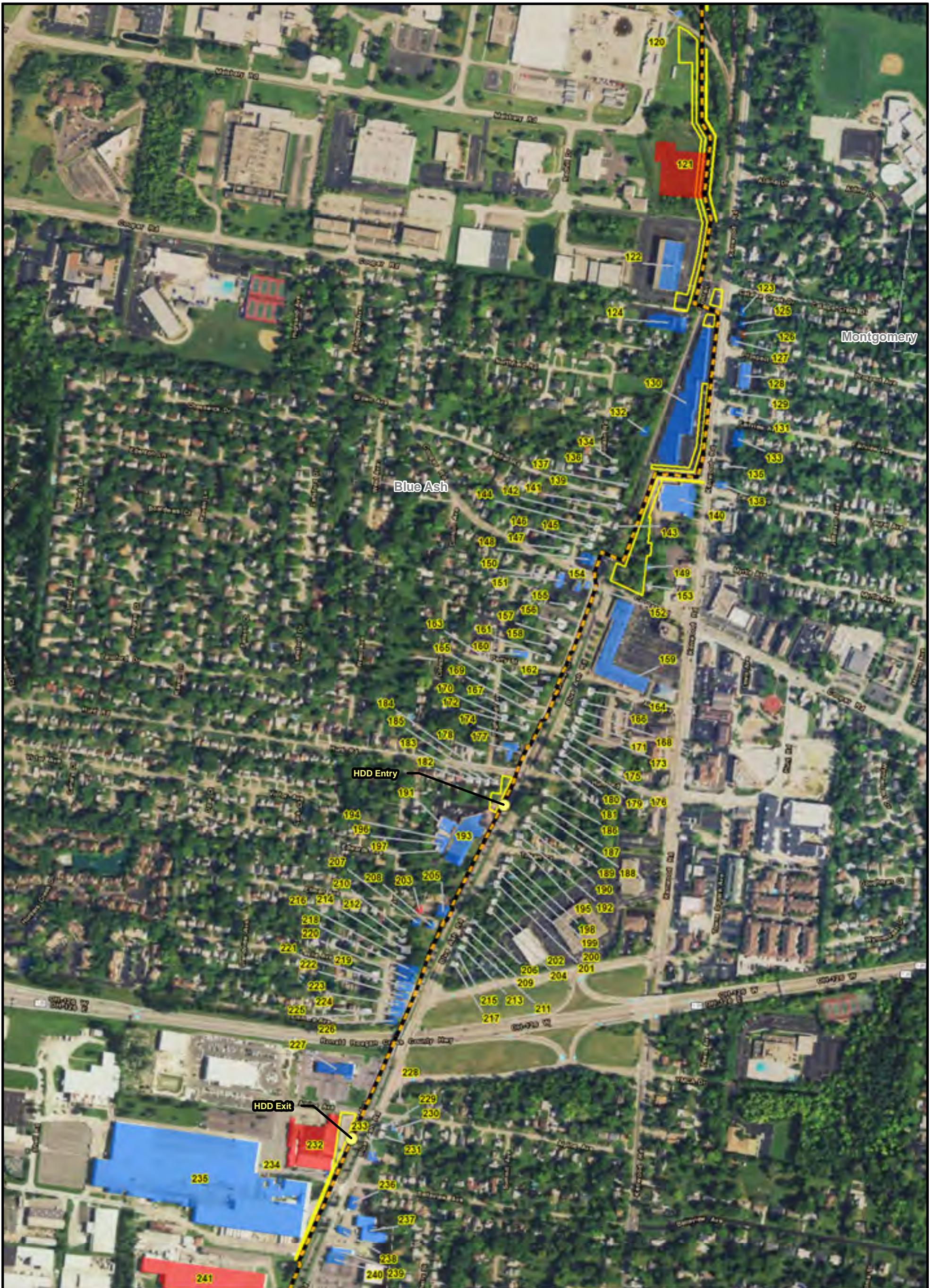
FIGURE 7-2C
STRUCTURES WITHIN 200 FEET*
OF PERMANANT ROW BOUNDARY

PN: 672247

CREATED BY:

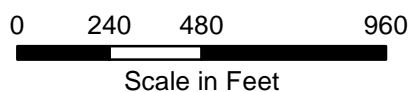
REVIEWED BY:





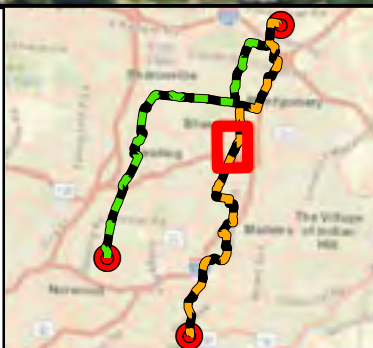
LEGEND:

- Preferred Route
- Alternate Route
- Existing or Future Regulation Station
- HDD Entry/Exit
- Municipal Boundary
- Temporary Workspace
- Permanent Access Road
- Temporary Access Road
- Stations
- Building Footprint**
- Commercial
- Residential
- Civic Building
- Industrial
- Hospital
- School



BASE MAP SOURCE:
USGS 7.5-minute Topographic Quadrangle
Cincinnati East 1982, Glendale 1982
Madeira 1983, Mason 1982

*The structure data types are based on data from Hamilton County CAGIS files, and where warranted, specific structure types updated based on aerial photography and other sources.



C314V Central Corridor Pipeline Extension Project

FIGURE 7-2D
STRUCTURES WITHIN 200 FEET*
OF PERMANANT ROW BOUNDARY

PN: 672247

CREATED BY:

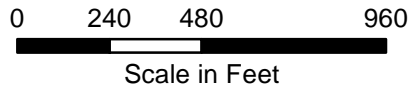
REVIEWED BY:





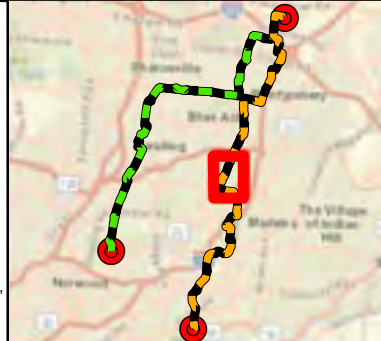
LEGEND:

- Preferred Route
- Alternate Route
- Existing or Future Regulation Station
- HDD Entry/Exit
- Municipal Boundary
- Temporary Workspace
- Permanent Access Road
- Temporary Access Road
- Stations
- Building Footprint**
- Commercial
- Residential
- Civic Building
- Industrial
- Hospital
- School



BASE MAP SOURCE:
USGS 7.5-minute Topographic Quadrangle
Cincinnati East 1982, Glendale 1982
Madeira 1983, Mason 1982

*The structure data types are based on data from Hamilton County CAGIS files, and where warranted, specific structure types updated based on aerial photography and other sources.

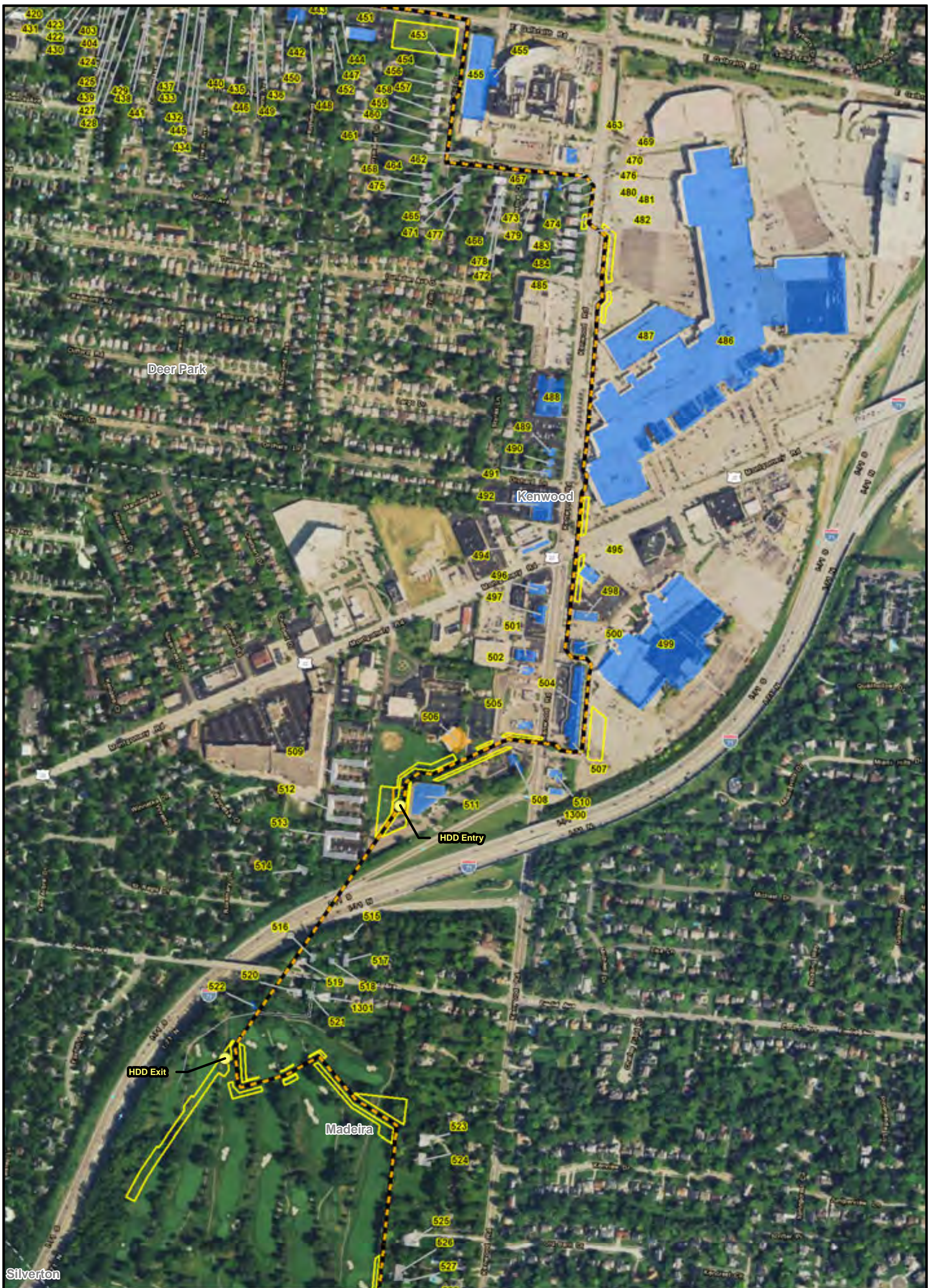


C314V Central Corridor Pipeline Extension Project

FIGURE 7-2E
STRUCTURES WITHIN 200 FEET*
OF PERMANANT ROW BOUNDARY

PN: 672247
CREATED BY:
REVIEWED BY:





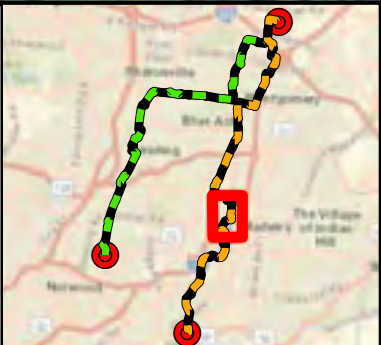
LEGEND:

- - - Preferred Route
- - - Alternate Route
- Existing or Future Regulation Station
- HDD Entry/Exit
- Municipal Boundary
- Temporary Workspace
- Permanent Access Road
- Temporary Access Road
- Stations
- Building Footprint**
- Commercial
- Residential
- Civic Building
- Industrial
- Hospital
- School



BASE MAP SOURCE:
USGS 7.5-minute Topographic Quadrangle
Cincinnati East 1982, Glendale 1982
Madeira 1983, Mason 1982

*The structure data types are based on data from Hamilton County CAGIS files, and where warranted, specific structure types updated based on aerial photography and other sources.



C314V Central Corridor Pipeline Extension Project

FIGURE 7-2F
STRUCTURES WITHIN 200 FEET*
OF PERMANANT ROW BOUNDARY

PN: 672247

CREATED BY:

REVIEWED BY:





LEGEND:

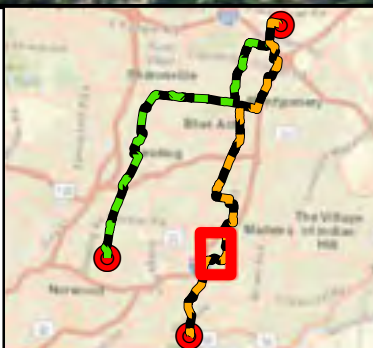
- Preferred Route
- Alternate Route
- Existing or Future Regulation Station
- HDD Entry/Exit
- Municipal Boundary
- Temporary Workspace
- Permanent Access Road
- Temporary Access Road
- Stations
- Building Footprint**
- Commercial
- Residential
- Civic Building
- Industrial
- Hospital
- School

0 240 480 960
Scale in Feet



BASE MAP SOURCE:
USGS 7.5-minute Topographic Quadrangle
Cincinnati East 1982, Glendale 1982
Madeira 1983, Mason 1982

*The structure data types are based on data from Hamilton County CAGIS files, and where warranted, specific structure types updated based on aerial photography and other sources.



C314V Central Corridor Pipeline Extension Project

FIGURE 7-2G
STRUCTURES WITHIN 200 FEET*
OF PERMANANT ROW BOUNDARY

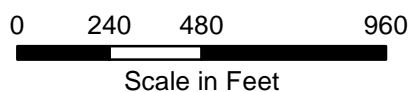
PN: 672247
CREATED BY:
REVIEWED BY:





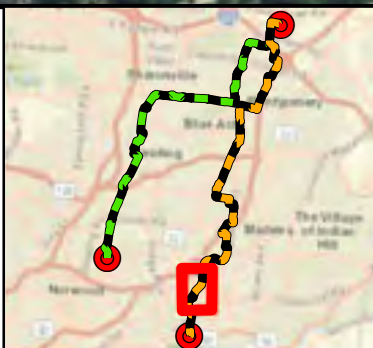
LEGEND:

- Preferred Route
- Alternate Route
- Existing or Future Regulation Station
- HDD Entry/Exit
- Municipal Boundary
- Temporary Workspace
- Permanent Access Road
- Temporary Access Road
- Stations
- Building Footprint**
- Commercial
- Residential
- Civic Building
- Industrial
- Hospital
- School



BASE MAP SOURCE:
USGS 7.5-minute Topographic Quadrangle
Cincinnati East 1982, Glendale 1982
Madeira 1983, Mason 1982

*The structure data types are based on data from Hamilton County CAGIS files, and where warranted, specific structure types updated based on aerial photography and other sources.



C314V Central Corridor Pipeline Extension Project

FIGURE 7-2H
STRUCTURES WITHIN 200 FEET*
OF PERMANANT ROW BOUNDARY

PN: 672247

CREATED BY:

REVIEWED BY:





LEGEND:

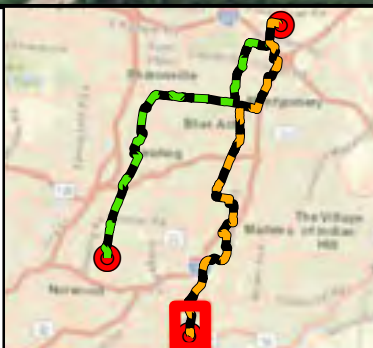
- Preferred Route
- Alternate Route
- Existing or Future Regulation Station
- HDD Entry/Exit
- Municipal Boundary
- Temporary Workspace
- Permanent Access Road
- Temporary Access Road
- Stations
- Building Footprint**
- Commercial
- Residential
- Civic Building
- Industrial
- Hospital
- School

0 240 480 960
Scale in Feet



BASE MAP SOURCE:
USGS 7.5-minute Topographic Quadrangle
Cincinnati East 1982, Glendale 1982
Madeira 1983, Mason 1982

*The structure data types are based on data from Hamilton County CAGIS files, and where warranted, specific structure types updated based on aerial photography and other sources.



C314V Central
Corridor Pipeline
Extension Project

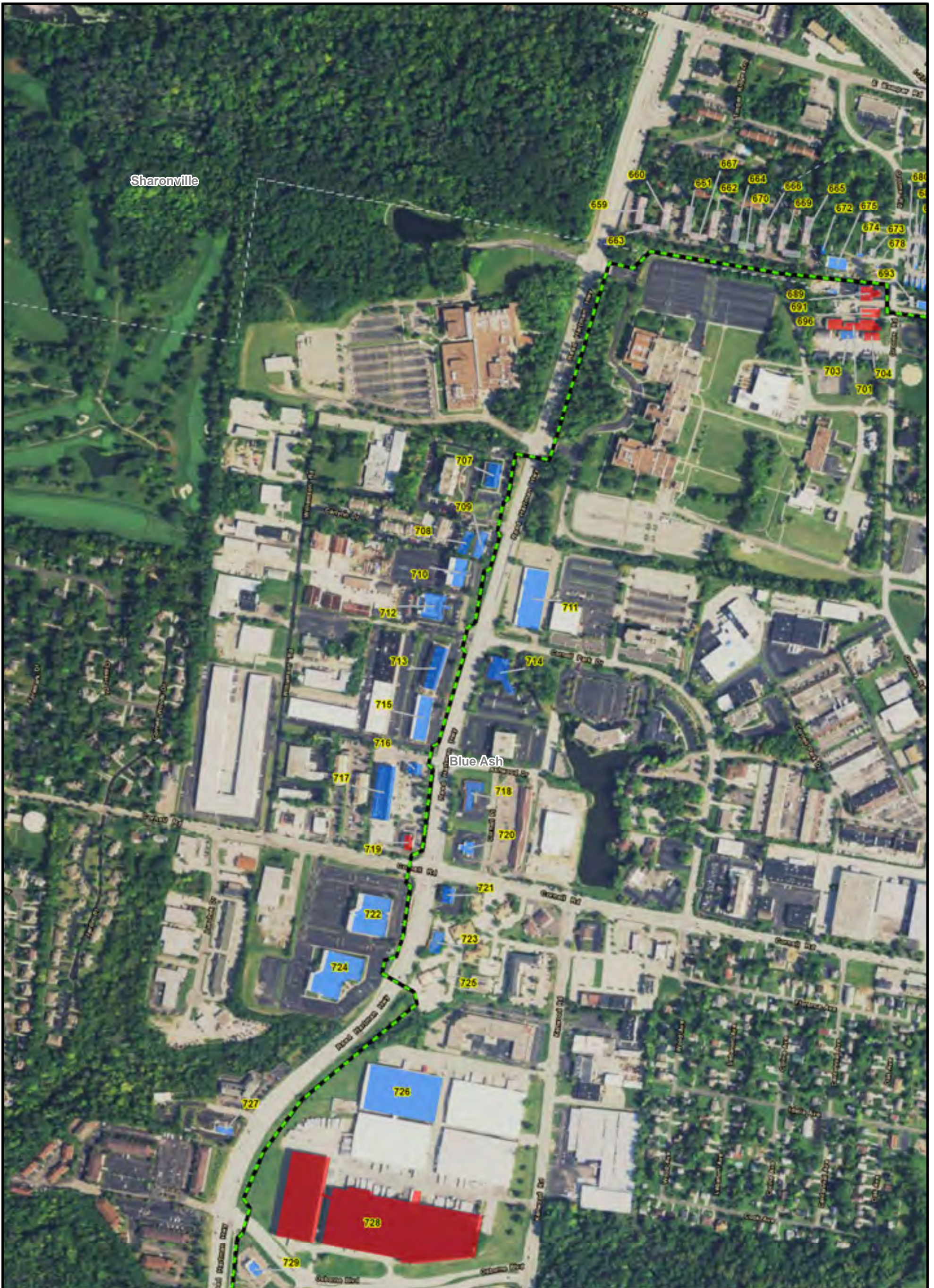
FIGURE 7-21
STRUCTURES WITHIN 200 FEET*
OF PERMANANT ROW BOUNDARY

PN: 672247

CREATED BY:

REVIEWED BY:





LEGEND:

- Preferred Route
- Alternate Route
- Existing or Future Regulation Station
- HDD Entry/Exit
- Municipal Boundary
- Temporary Workspace
- Permanent Access Road
- Temporary Access Road

- Stations
- Building Footprint**
- Commercial
- Residential
- Civic Building
- Industrial
- Hospital
- School

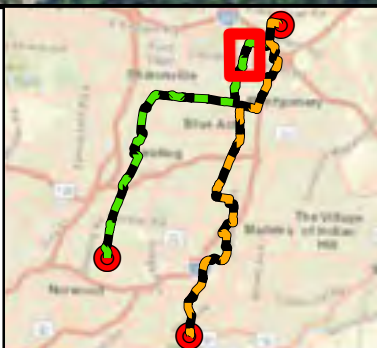


BASE MAP SOURCE:
USGS 7.5-minute Topographic Quadrangle
Cincinnati East 1982, Glendale 1982
Madeira 1983, Mason 1982

*The structure data types are based on data from Hamilton County CAGIS files, and where warranted, specific structure types updated based on aerial photography and other sources.

0 240 480 960

Scale in Feet



C314V Central Corridor Pipeline Extension Project

FIGURE 7-2J
STRUCTURES WITHIN 200 FEET* OF PERMANANT ROW BOUNDARY

PN: 672247

CREATED BY:

REVIEWED BY:





LEGEND:

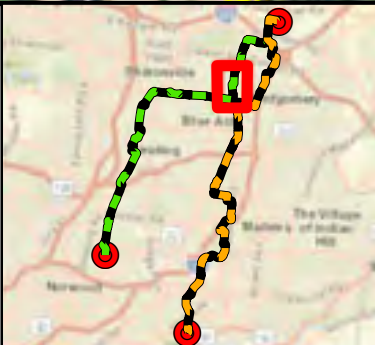
- Preferred Route
- Alternate Route
- Existing or Future Regulation Station
- HDD Entry/Exit
- Municipal Boundary
- Temporary Workspace
- Permanent Access Road
- Temporary Access Road
- Stations
- Building Footprint**
- Commercial
- Residential
- Civic Building
- Industrial
- Hospital
- School

0 240 480 960
Scale in Feet



BASE MAP SOURCE:
USGS 7.5-minute Topographic Quadrangle
Cincinnati East 1982, Glendale 1982
Madeira 1983, Mason 1982

*The structure data types are based on data from Hamilton County CAGIS files, and where warranted, specific structure types updated based on aerial photography and other sources.



C314V Central
Corridor Pipeline
Extension Project

FIGURE 7-2K
STRUCTURES WITHIN 200 FEET*
OF PERMANANT ROW BOUNDARY

PN: 672247

CREATED BY:

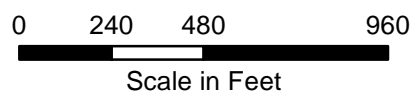
REVIEWED BY:





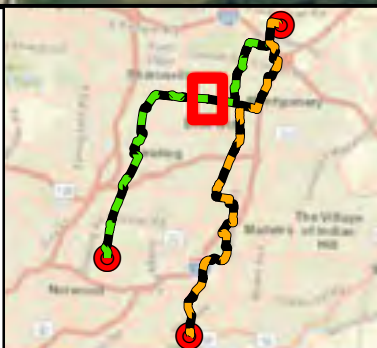
LEGEND:

- Preferred Route
- Alternate Route
- Existing or Future Regulation Station
- HDD Entry/Exit
- Municipal Boundary
- Temporary Workspace
- Permanent Access Road
- Temporary Access Road
- Stations
- Building Footprint**
- Commercial
- Residential
- Civic Building
- Industrial
- Hospital
- School



BASE MAP SOURCE:
USGS 7.5-minute Topographic Quadrangle
Cincinnati East 1982, Glendale 1982
Madeira 1983, Mason 1982

*The structure data types are based on data from Hamilton County CAGIS files, and where warranted, specific structure types updated based on aerial photography and other sources.



C314V Central Corridor Pipeline Extension Project

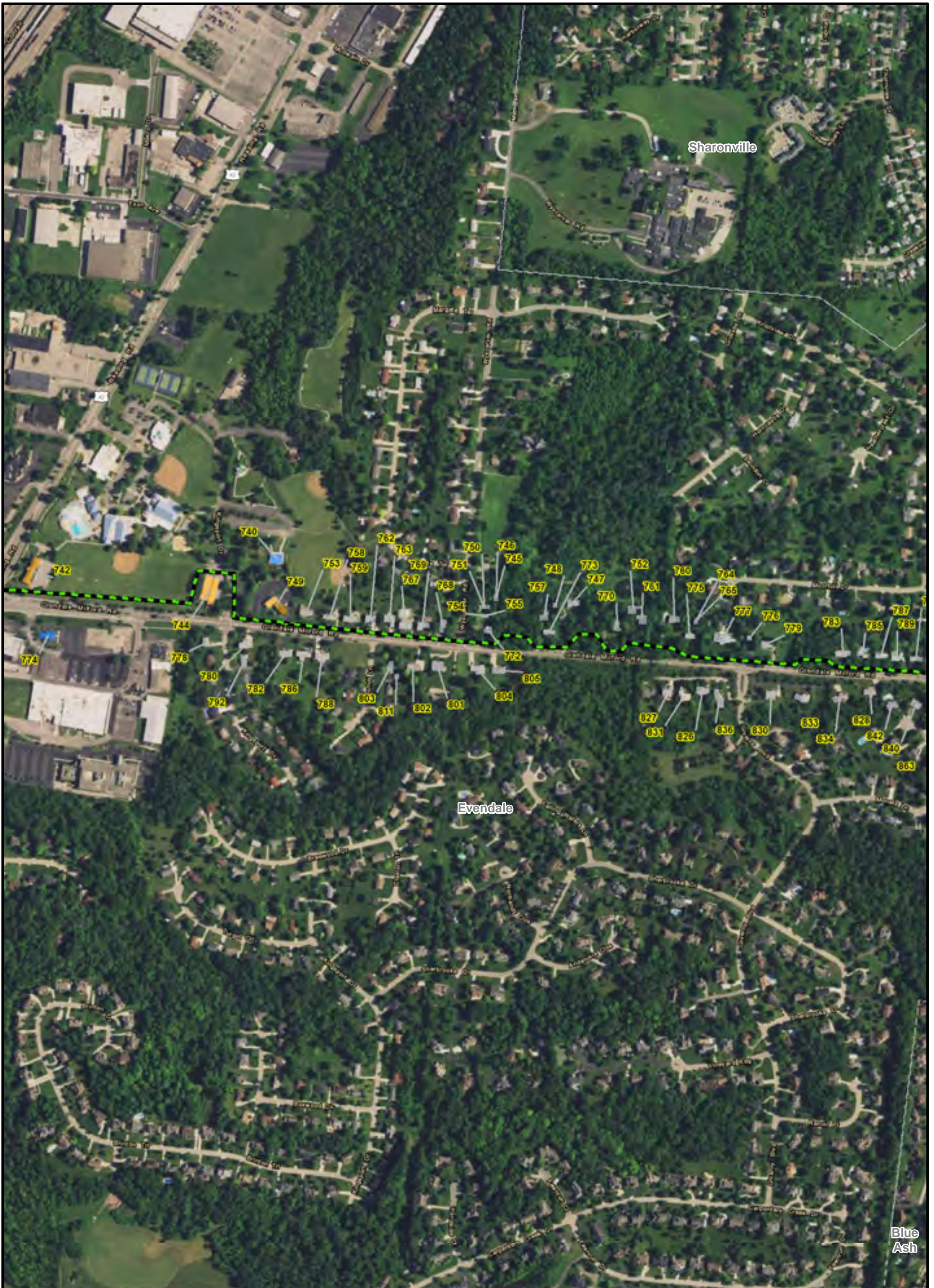
FIGURE 7-2L
STRUCTURES WITHIN 200 FEET*
OF PERMANANT ROW BOUNDARY

PN: 672247

CREATED BY:

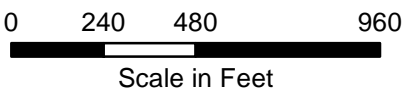
REVIEWED BY:





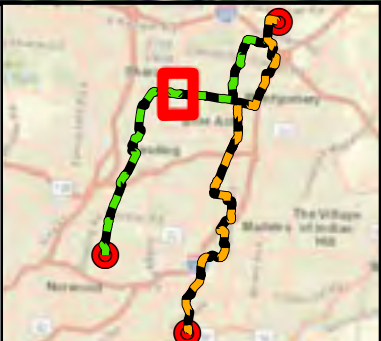
LEGEND:

- Preferred Route
- Alternate Route
- Existing or Future Regulation Station
- HDD Entry/Exit
- Municipal Boundary
- Temporary Workspace
- Permanent Access Road
- Temporary Access Road
- Stations
- Building Footprint**
- Commercial
- Residential
- Civic Building
- Industrial
- Hospital
- School



BASE MAP SOURCE:
USGS 7.5-minute Topographic Quadrangle
Cincinnati East 1982, Glendale 1982
Madeira 1983, Mason 1982

*The structure data types are based on data from Hamilton County CAGIS files, and where warranted, specific structure types updated based on aerial photography and other sources.



C314V Central Corridor Pipeline Extension Project

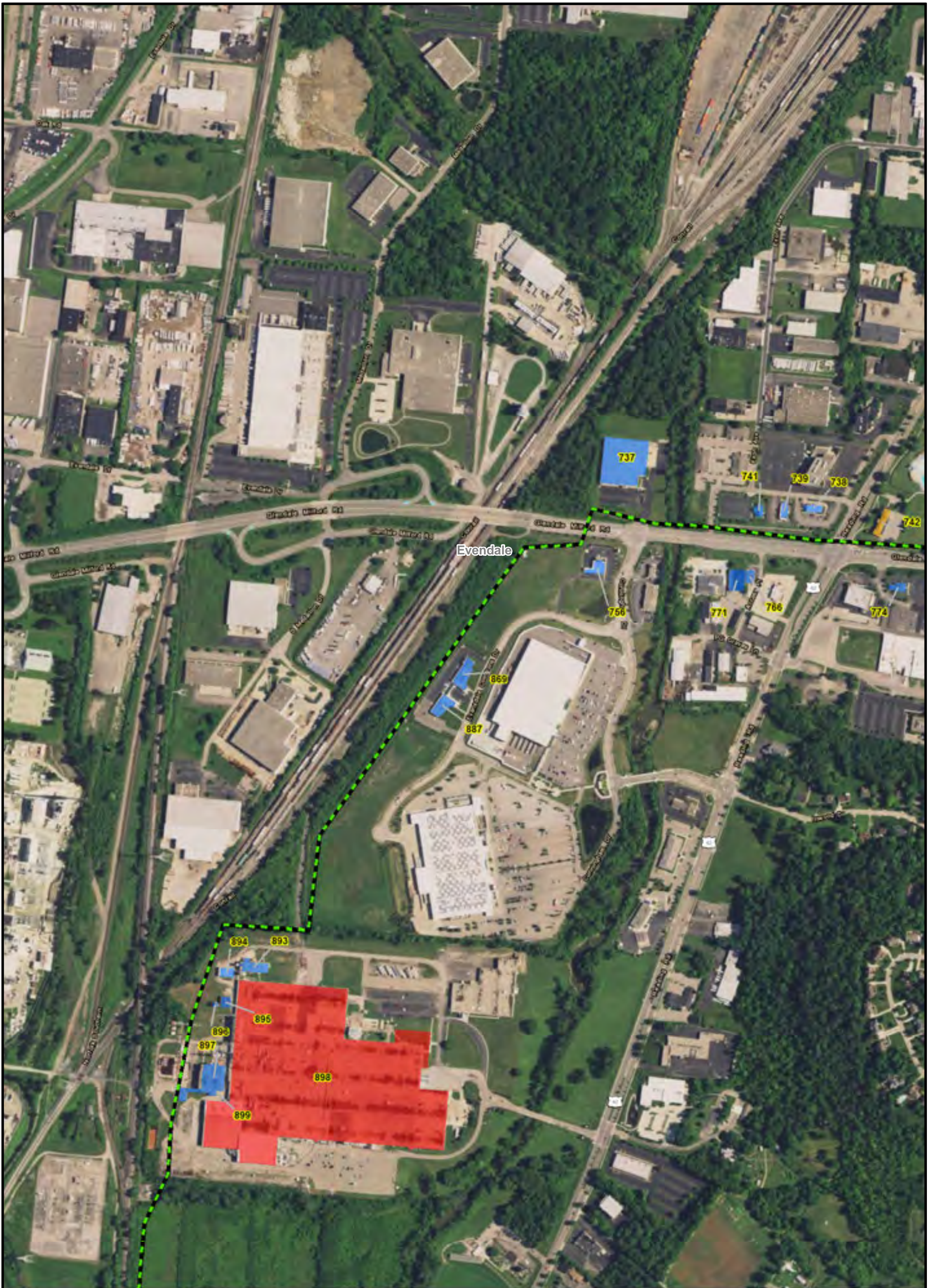
FIGURE 7-2M
STRUCTURES WITHIN 200 FEET*
OF PERMANANT ROW BOUNDARY

PN: 672247

CREATED BY:

REVIEWED BY:





LEGEND:

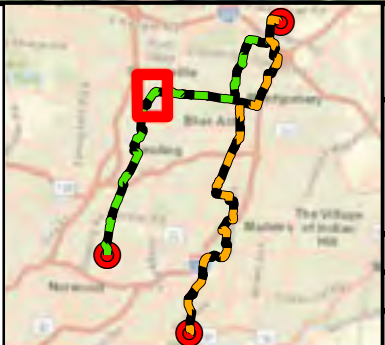
- Preferred Route
- Alternate Route
- Existing or Future Regulation Station
- HDD Entry/Exit
- Municipal Boundary
- Temporary Workspace
- Permanent Access Road
- Temporary Access Road
- Stations
- Building Footprint**
- Commercial
- Residential
- Civic Building
- Industrial
- Hospital
- School

0 240 480 960
Scale in Feet



BASE MAP SOURCE:
USGS 7.5-minute Topographic Quadrangle
Cincinnati East 1982, Glendale 1982
Madeira 1983, Mason 1982

*The structure data types are based on data from Hamilton County CAGIS files, and where warranted, specific structure types updated based on aerial photography and other sources.



C314V Central
Corridor Pipeline
Extension Project

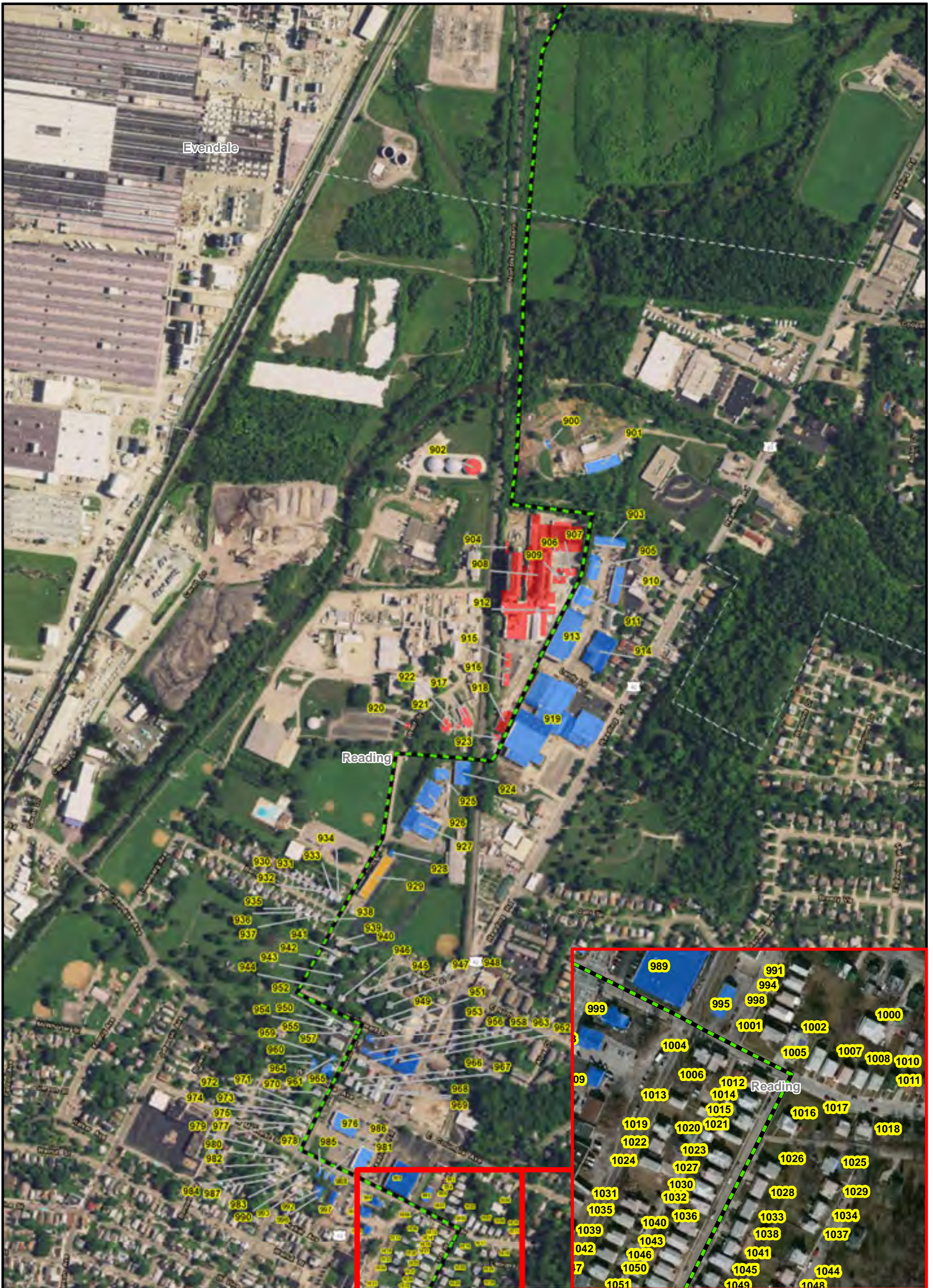
FIGURE 7-2N
STRUCTURES WITHIN 200 FEET*
OF PERMANANT ROW BOUNDARY

PN: 672247

CREATED BY:

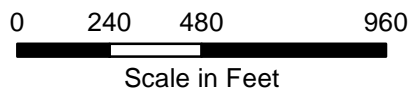
REVIEWED BY:





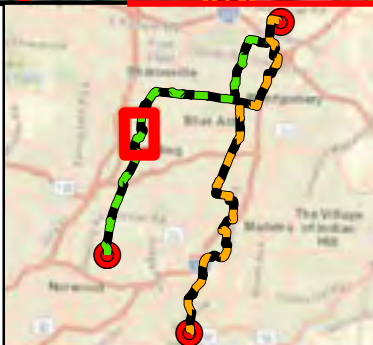
LEGEND:

- Preferred Route
- Alternate Route
- Existing or Future Regulation Station
- HDD Entry/Exit
- Municipal Boundary
- Temporary Workspace
- Permanent Access Road
- Temporary Access Road
- Stations
- Building Footprint**
- Commercial
- Residential
- Civic Building
- Industrial
- Hospital
- School



BASE MAP SOURCE:
USGS 7.5-minute Topographic Quadrangle
Cincinnati East 1982, Glendale 1982
Madeira 1983, Mason 1982

*The structure data types are based on data from Hamilton County CAGIS files, and where warranted, specific structure types updated based on aerial photography and other sources.



C314V Central
Corridor Pipeline
Extension Project

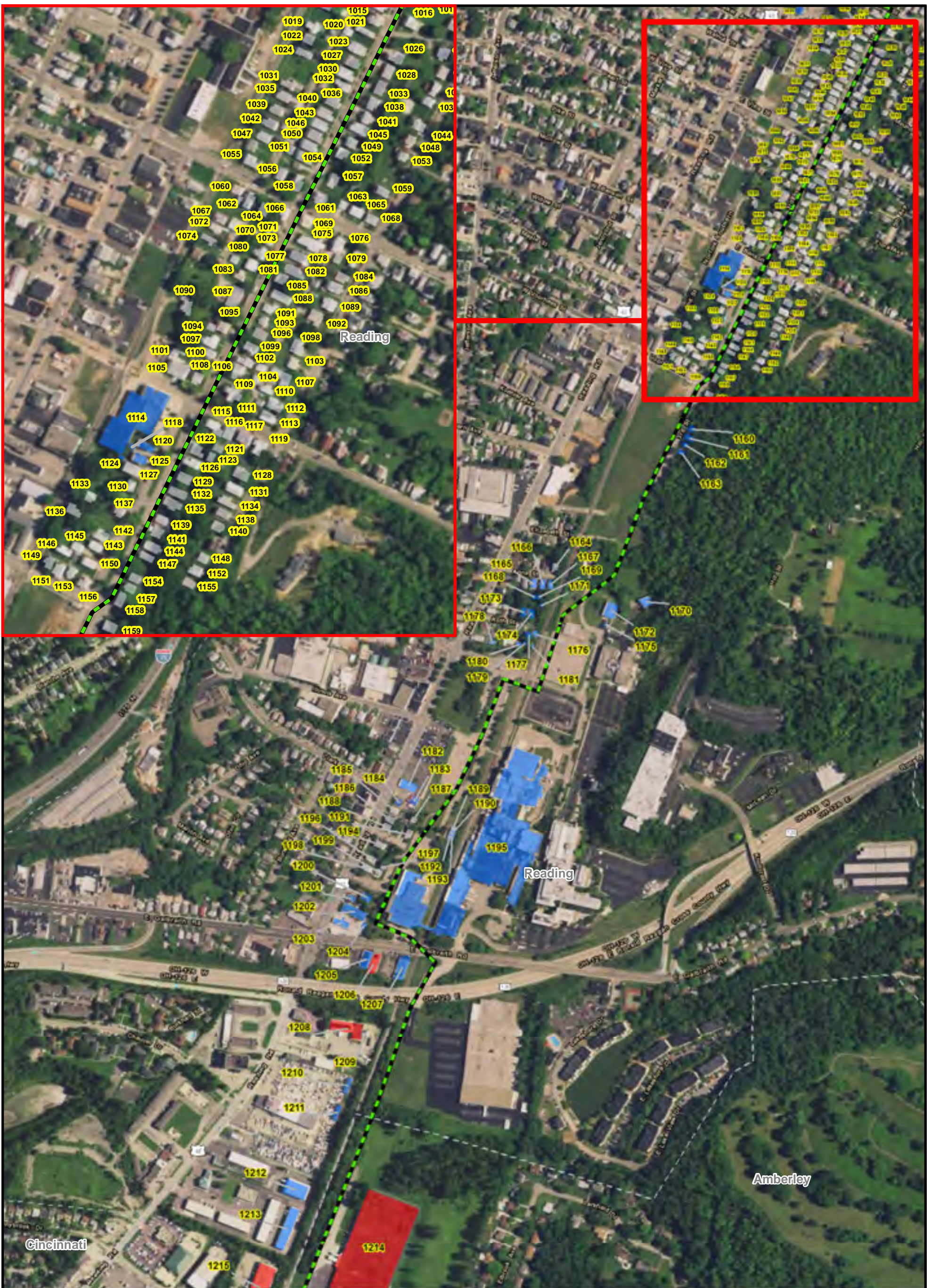
FIGURE 7-20
STRUCTURES WITHIN 200 FEET*
OF PERMANANT ROW BOUNDARY

PN: 672247

CREATED BY:

REVIEWED BY:





LEGEND:

- Preferred Route
- Alternate Route
- Existing or Future Regulation Station
- HDD Entry/Exit
- Municipal Boundary
- Temporary Workspace
- Permanent Access Road
- Temporary Access Road
- Stations
- Building Footprint**
- Commercial
- Residential
- Civic Building
- Industrial
- Hospital
- School

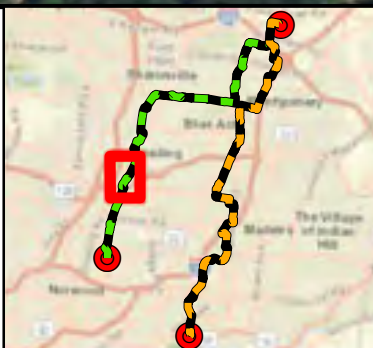


BASE MAP SOURCE:
USGS 7.5-minute Topographic Quadrangle
Cincinnati East 1982, Glendale 1982
Madeira 1983, Mason 1982

*The structure data types are based on data from Hamilton County CAGIS files, and where warranted, specific structure types updated based on aerial photography and other sources.

0 240 480 960

Scale in Feet



C314V Central
Corridor Pipeline
Extension Project

FIGURE 7-2P
STRUCTURES WITHIN 200 FEET*
OF PERMANANT ROW BOUNDARY

PN: 672247

CREATED BY:

REVIEWED BY:





LEGEND:

- Preferred Route
- Alternate Route
- Existing or Future Regulation Station
- HDD Entry/Exit
- Municipal Boundary
- Temporary Workspace
- Permanent Access Road
- Temporary Access Road

- Stations
- Building Footprint**
- Commercial
- Residential
- Civic Building
- Industrial
- Hospital
- School

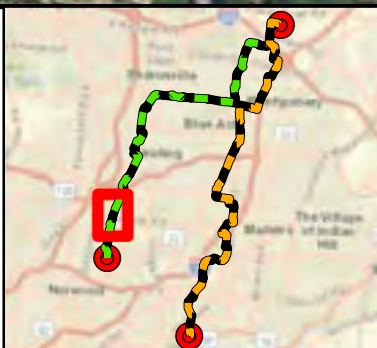


BASE MAP SOURCE:
USGS 7.5-minute Topographic Quadrangle
Cincinnati East 1982, Glendale 1982
Madeira 1983, Mason 1982

*The structure data types are based on data from Hamilton County CAGIS files, and where warranted, specific structure types updated based on aerial photography and other sources.

0 240 480 960

Scale in Feet



C314V Central Corridor Pipeline Extension Project

FIGURE 7-2Q
STRUCTURES WITHIN 200 FEET*
OF PERMANANT ROW BOUNDARY

PN: 672247

CREATED BY:

REVIEWED BY:





LEGEND:

- Preferred Route
- Alternate Route
- Existing or Future Regulation Station
- HDD Entry/Exit
- Municipal Boundary
- Temporary Workspace
- Permanent Access Road
- Temporary Access Road
- Stations
- Building Footprint**
- Commercial
- Residential
- Civic Building
- Industrial
- Hospital
- School

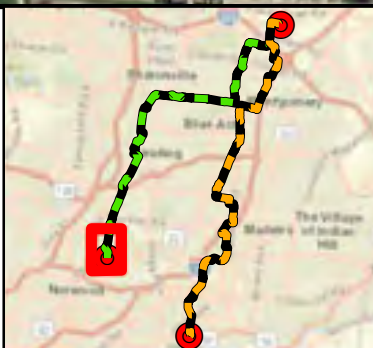
0 240 480 960

Scale in Feet



BASE MAP SOURCE:
USGS 7.5-minute Topographic Quadrangle
Cincinnati East 1982, Glendale 1982
Madeira 1983, Mason 1982

*The structure data types are based on data from Hamilton County CAGIS files, and where warranted, specific structure types updated based on aerial photography and other sources.



C314V Central
Corridor Pipeline
Extension Project

FIGURE 7-2R
STRUCTURES WITHIN 200 FEET*
OF PERMANANT ROW BOUNDARY

PN: 672247

CREATED BY:

REVIEWED BY:



APPENDIX 7-1

List of Structures Within 200 Feet of Preliminary
Right-of-Way of Preferred and Alternate Routes

TABLE 7-1A
Structures Within 200 feet of Preliminary ROW of the Preferred Route

| Structure ID Number | Structure Type | Distance from Edge of Preliminary ROW (feet)* | Structure ID Number | Structure Type | Distance from Edge of Preliminary ROW (feet)* |
|---------------------|----------------|---|---------------------|----------------|---|
| 1 | Residence | 158 | 37 | Industrial | 77 |
| 2 | Commercial | 104 | 38 | Industrial | 83 |
| 3 | Industrial | 145 | 39 | Industrial | 90 |
| 4 | Industrial | 182 | 40 | Industrial | 17 |
| 5 | Manufacturing | 124 | 41 | Industrial | 93 |
| 6 | Residence | 59 | 42 | Industrial | 157 |
| | | | 43 | Commercial | 92 |
| 8 | Commercial | 112 | 44 | Commercial | 14 |
| 9 | Commercial | 152 | 45 | Industrial | 94 |
| 10 | Commercial | 145 | 46 | Industrial | 151 |
| | | | 47 | Industrial | 0 |
| 12 | Commercial | 130 | 48 | Industrial | 69 |
| 13 | Residence | 128 | 49 | Commercial | 41 |
| 14 | Commercial | 117 | 50 | Commercial | 70 |
| 15 | Residence | 117 | 51 | Commercial | 114 |
| 16 | Commercial | 11 | 52 | Commercial | 163 |
| 17 | Commercial | 125 | 53 | Manufacturing | 44 |
| 18 | Commercial | 27 | 54 | Commercial | 61 |
| 19 | Commercial | 54 | 55 | Residence | 86 |
| 20 | Industrial | 26 | 56 | Commercial | 11 |
| 21 | Commercial | 94 | 57 | Manufacturing | 144 |
| 22 | Commercial | 27 | 58 | Industrial | 22 |
| 23 | Commercial | 33 | 59 | Commercial | 130 |
| 24 | Commercial | 73 | 60 | Commercial | 1 |
| 25 | Commercial | 118 | 61 | Industrial | 189 |
| 26 | Commercial | 69 | 62 | Industrial | 153 |
| 27 | Commercial | 148 | 63 | Commercial | 118 |
| 28 | Commercial | 121 | 64 | Manufacturing | 22 |
| 29 | Commercial | 55 | 65 | Commercial | 36 |
| 30 | Commercial | 28 | | | |
| 31 | Commercial | 70 | 67 | Manufacturing | 85 |
| 32 | Commercial | 0 | 68 | Manufacturing | 133 |
| 33 | Industrial | 106 | 69 | Commercial | 64 |
| 34 | Commercial | 101 | 70 | Commercial | 145 |
| 35 | Manufacturing | 68 | 71 | Commercial | 31 |
| 36 | Commercial | 23 | 72 | Commercial | 159 |

TABLE 7-1A

Structures Within 200 feet of Preliminary ROW of the Preferred Route

| Structure ID Number | Structure Type | Distance from Edge of Preliminary ROW (feet)* | Structure ID Number | Structure Type | Distance from Edge of Preliminary ROW (feet)* |
|---------------------|----------------|---|---------------------|----------------|---|
| 73 | Industrial | 67 | 109 | Commercial | 47 |
| 74 | Commercial | 33 | 110 | Commercial | 89 |
| 75 | Commercial | 119 | 111 | Commercial | 85 |
| 76 | Commercial | 36 | 112 | Commercial | 104 |
| 77 | Commercial | 164 | 113 | Manufacturing | 7 |
| 78 | Commercial | 78 | 114 | Residence | 198 |
| 79 | Manufacturing | 0 | 115 | Residence | 184 |
| 80 | Industrial | 31 | 116 | Residence | 178 |
| 81 | Industrial | 12 | 117 | Residence | 191 |
| 82 | Manufacturing | 188 | 118 | Residence | 193 |
| 83 | Industrial | 87 | 119 | Commercial | 127 |
| 84 | Industrial | 73 | 120 | Commercial | 86 |
| 85 | Commercial | 1 | 121 | Manufacturing | 0 |
| 86 | Commercial | 46 | 122 | Commercial | 90 |
| 87 | Industrial | 111 | 123 | Commercial | 107 |
| 88 | Commercial | 69 | 124 | Commercial | 68 |
| 89 | Residence | 196 | 125 | Commercial | 108 |
| 90 | Commercial | 45 | 126 | Medical | 113 |
| 91 | Commercial | 170 | 127 | Commercial | 67 |
| 92 | Commercial | 152 | 128 | Commercial | 138 |
| 93 | Residence | 118 | 129 | Residence | 92 |
| 94 | Commercial | 187 | 130 | Commercial | 12 |
| 95 | Commercial | 61 | 131 | Commercial | 106 |
| 96 | Commercial | 54 | 132 | Commercial | 195 |
| 97 | Commercial | 33 | 133 | Commercial | 136 |
| 98 | Commercial | 59 | 134 | Residence | 196 |
| 99 | Commercial | 104 | 135 | Residence | 98 |
| 100 | Commercial | 101 | 136 | Residence | 177 |
| 101 | Commercial | 33 | 137 | Residence | 95 |
| 102 | Commercial | 39 | 138 | Commercial | 96 |
| 103 | Commercial | 180 | 139 | Residence | 151 |
| 104 | Commercial | 52 | 140 | Commercial | 29 |
| 105 | Commercial | 53 | 141 | Residence | 73 |
| 106 | Residence | 172 | 142 | Residence | 148 |
| 107 | Commercial | 43 | 143 | Residence | 73 |
| 108 | Commercial | 176 | 144 | Residence | 97 |

TABLE 7-1A

Structures Within 200 feet of Preliminary ROW of the Preferred Route

| Structure ID Number | Structure Type | Distance from Edge of Preliminary ROW (feet)* | Structure ID Number | Structure Type | Distance from Edge of Preliminary ROW (feet)* |
|----------------------------|-----------------------|--|----------------------------|-----------------------|--|
| 145 | Residence | 51 | 181 | Residence | 158 |
| 146 | Residence | 37 | 182 | Residence | 182 |
| 147 | Apartment | 157 | 183 | Residence | 141 |
| 148 | Commercial | 3 | 184 | Residence | 55 |
| 149 | Commercial | 110 | 185 | Residence | 95 |
| 150 | Residence | 194 | 186 | Residence | 155 |
| 151 | Commercial | 148 | 187 | Residence | 186 |
| 152 | Commercial | 8 | 188 | Residence | 138 |
| 153 | Residence | 160 | 189 | Residence | 131 |
| 154 | Commercial | 58 | 190 | Residence | 131 |
| 155 | Residence | 53 | 191 | Commercial | 172 |
| 156 | Residence | 63 | 192 | Residence | 126 |
| 157 | Residence | 75 | 193 | Commercial | 12 |
| 158 | Residence | 63 | 194 | Commercial | 158 |
| 159 | Commercial | 116 | 195 | Residence | 137 |
| 160 | Commercial | 190 | 196 | Commercial | 158 |
| 161 | Residence | 71 | 197 | Commercial | 157 |
| 162 | Residence | 31 | 198 | Residence | 133 |
| 163 | Residence | 57 | 199 | Residence | 132 |
| 164 | Residence | 145 | 200 | Residence | 132 |
| 165 | Residence | 62 | 201 | Residence | 133 |
| 166 | Residence | 132 | 202 | Residence | 167 |
| 167 | Residence | 179 | 203 | Industrial | 111 |
| 168 | Residence | 131 | 204 | Residence | 172 |
| 169 | Residence | 38 | 205 | Commercial | 0 |
| 170 | Residence | 153 | 206 | Residence | 101 |
| 171 | Residence | 128 | 207 | Commercial | 94 |
| 172 | Residence | 24 | 208 | Commercial | 16 |
| 173 | Residence | 129 | 209 | Residence | 101 |
| 174 | Residence | 70 | 210 | Residence | 141 |
| 175 | Residence | 136 | 211 | Residence | 109 |
| 176 | Residence | 139 | 212 | Residence | 126 |
| 177 | Commercial | 21 | 213 | Residence | 112 |
| 178 | Residence | 183 | 214 | Residence | 83 |
| 179 | Residence | 150 | 215 | Residence | 114 |
| 180 | Residence | 153 | 216 | Residence | 98 |

TABLE 7-1A
Structures Within 200 feet of Preliminary ROW of the Preferred Route

| Structure ID Number | Structure Type | Distance from Edge of Preliminary ROW (feet)* | Structure ID Number | Structure Type | Distance from Edge of Preliminary ROW (feet)* |
|---------------------|----------------|---|---------------------|----------------|---|
| 217 | Residence | 110 | 253 | Commercial | 121 |
| 218 | Commercial | 7 | 254 | Residence | 124 |
| 219 | Residence | 193 | 255 | Residence | 130 |
| 220 | Commercial | 6 | 256 | Residence | 125 |
| 221 | Commercial | 1 | 257 | Residence | 126 |
| 222 | Commercial | 6 | 258 | Residence | 127 |
| 223 | Commercial | 2 | 259 | Industrial | 133 |
| 224 | Residence | 156 | 260 | Residence | 127 |
| 225 | Commercial | 0 | 261 | Residence | 118 |
| 226 | Commercial | 9 | 262 | Industrial | 64 |
| 227 | Commercial | 113 | 263 | Residence | 126 |
| 228 | Residence | 124 | 264 | Residence | 123 |
| 229 | Residence | 108 | 265 | Residence | 198 |
| 230 | Commercial | 168 | 266 | Residence | 122 |
| 231 | Residence | 116 | 267 | Residence | 128 |
| 232 | Manufacturing | 22 | 268 | Residence | 197 |
| 233 | Commercial | 101 | 269 | Residence | 127 |
| 234 | Commercial | 24 | 270 | Residence | 129 |
| 235 | Commercial | 33 | 271 | Industrial | 59 |
| 236 | Commercial | 105 | 272 | Residence | 129 |
| 237 | Commercial | 179 | 273 | Residence | 144 |
| 238 | Commercial | 107 | 274 | Residence | 188 |
| 239 | Commercial | 118 | 275 | Residence | 53 |
| 240 | Commercial | 111 | 276 | Residence | 130 |
| 241 | Manufacturing | 101 | 277 | Residence | 129 |
| 242 | Commercial | 99 | 278 | Residence | 126 |
| 243 | Manufacturing | 193 | 279 | Residence | 158 |
| 244 | Residence | 128 | 280 | Residence | 34 |
| 245 | Manufacturing | 21 | 281 | Residence | 181 |
| 246 | Apartment | 132 | 282 | Residence | 31 |
| 247 | Apartment | 130 | 283 | Residence | 127 |
| 248 | Manufacturing | 161 | 284 | Residence | 36 |
| 249 | Manufacturing | 26 | 285 | Residence | 134 |
| 250 | Residence | 134 | 286 | Residence | 192 |
| 251 | Commercial | 123 | 287 | Commercial | 42 |
| 252 | Manufacturing | 133 | 288 | Residence | 178 |

TABLE 7-1A
Structures Within 200 feet of Preliminary ROW of the Preferred Route

| Structure ID Number | Structure Type | Distance from Edge of Preliminary ROW (feet)* | Structure ID Number | Structure Type | Distance from Edge of Preliminary ROW (feet)* |
|---------------------|----------------|---|---------------------|----------------|---|
| 289 | Residence | 131 | 325 | Commercial | 180 |
| 290 | Commercial | 85 | 326 | Residence | 29 |
| 291 | Residence | 193 | 327 | Apartment | 168 |
| 292 | Residence | 57 | 328 | Government | 194 |
| 293 | Residence | 137 | 329 | Residence | 183 |
| 294 | Residence | 134 | 330 | Industrial | 0 |
| 295 | Residence | 134 | 331 | Residence | 189 |
| 296 | Residence | 32 | 332 | Residence | 82 |
| 297 | Commercial | 126 | 333 | Residence | 37 |
| 298 | Residence | 32 | 334 | Residence | 115 |
| 299 | Medical | 124 | 335 | Multifamily | 37 |
| 300 | Residence | 32 | 336 | Residence | 35 |
| 301 | Commercial | 123 | 337 | Residence | 38 |
| 302 | Commercial | 116 | 338 | Residence | 139 |
| 303 | Residence | 147 | 339 | Commercial | 156 |
| 304 | Commercial | 181 | 340 | Residence | 183 |
| 305 | Commercial | 22 | 341 | Residence | 132 |
| 306 | Commercial | 115 | 342 | Residence | 93 |
| 307 | Commercial | 123 | 343 | Residence | 60 |
| 308 | Commercial | 168 | 344 | Residence | 47 |
| 309 | Commercial | 94 | 345 | Residence | 51 |
| 310 | Commercial | 26 | 346 | Residence | 53 |
| 311 | Residence | 129 | 347 | Residence | 52 |
| 312 | Commercial | 142 | 348 | Residence | 16 |
| 313 | Residence | 189 | 349 | Commercial | 121 |
| 314 | Commercial | 19 | 350 | Commercial | 184 |
| 315 | Commercial | 126 | 351 | Residence | 159 |
| 316 | Commercial | 13 | 352 | Residence | 2 |
| 317 | Residence | 183 | 353 | Residence | 88 |
| 318 | Residence | 146 | 354 | Residence | 38 |
| 319 | Commercial | 55 | 355 | School | 11 |
| 320 | Commercial | 89 | 356 | Commercial | 156 |
| 321 | Residence | 96 | 357 | Residence | 9 |
| 322 | Commercial | 50 | 358 | Commercial | 26 |
| 323 | Commercial | 5 | 359 | Residence | 122 |
| 324 | Residence | 122 | 360 | Residence | 156 |

TABLE 7-1A
Structures Within 200 feet of Preliminary ROW of the Preferred Route

| Structure ID Number | Structure Type | Distance from Edge of Preliminary ROW (feet)* | Structure ID Number | Structure Type | Distance from Edge of Preliminary ROW (feet)* |
|---------------------|---------------------------|---|---------------------|----------------|---|
| 361 | Residence | 58 | 397 | Residence | 196 |
| 362 | Residence | 17 | 398 | Commercial | 128 |
| 363 | Residence | 166 | 399 | Residence | 113 |
| 364 | Residence | 43 | 400 | Commercial | 128 |
| 365 | Industrial | 40 | 401 | Residence | 81 |
| 366 | Industrial | 98 | 402 | Medical | 153 |
| 367 | Residence | 63 | 403 | Residence | 21 |
| 368 | Industrial | 47 | 404 | Residence | 29 |
| 369 | Residence | 115 | 405 | Commercial | 25 |
| 370 | Residence | 161 | 406 | Residence | 22 |
| 371 | Residence | 65 | 407 | Residence | 17 |
| 372 | Residence | 14 | 408 | Residence | 20 |
| 373 | Residence | 124 | 409 | Residence | 23 |
| 374 | Residence | 81 | 410 | Residence | 22 |
| 375 | Commercial | 75 | 411 | Commercial | 141 |
| 376 | Residence | 162 | 412 | Residence | 30 |
| 377 | Residence | 124 | 413 | Residence | 33 |
| 378 | Residence | 81 | 414 | Residence | 33 |
| 379 | Residence | 39 | 415 | Residence | 30 |
| 380 | Industrial | 41 | 416 | Residence | 29 |
| 381 | Commercial | 110 | 417 | Commercial | 49 |
| 382 | Commercial | 9 | 418 | Residence | 27 |
| 383 | Commercial | 40 | 419 | Residence | 27 |
| 384 | Residence | 194 | 420 | Commercial | 34 |
| 385 | Residence | 153 | 421 | Commercial | 118 |
| 386 | Manufacturing | 39 | 422 | Commercial | 57 |
| 387 | Multifamily | 28 | 423 | Commercial | 37 |
| 388 | Commercial | 110 | 424 | Residence | 54 |
| 389 | Commercial | 60 | 425 | Residence | 54 |
| 390 | Commercial | 44 | 426 | Commercial | 110 |
| 391 | Industrial | 30 | 427 | Residence | 59 |
| 392 | Industrial, Manufacturing | 57 | 428 | Residence | 58 |
| 393 | Residence | 163 | 429 | Residence | 57 |
| | | | 430 | Commercial | 117 |
| 395 | Commercial | 17 | 431 | Commercial | 151 |
| 396 | Commercial | 48 | 432 | Government | 77 |

TABLE 7-1A
Structures Within 200 feet of Preliminary ROW of the Preferred Route

| Structure ID Number | Structure Type | Distance from Edge of Preliminary ROW (feet)* | Structure ID Number | Structure Type | Distance from Edge of Preliminary ROW (feet)* |
|---------------------|----------------|---|---------------------|----------------|---|
| 433 | Residence | 78 | 469 | Commercial | 28 |
| 434 | Residence | 69 | 470 | Apartment | 32 |
| 435 | Residence | 57 | 471 | Residence | 93 |
| 436 | Residence | 57 | 472 | Apartment | 86 |
| 437 | Residence | 137 | 473 | Apartment | 97 |
| 438 | Residence | 165 | 474 | Commercial | 89 |
| 439 | Residence | 193 | 475 | Residence | 176 |
| 440 | Residence | 108 | 476 | Apartment | 41 |
| 441 | Residence | 154 | 477 | Residence | 168 |
| 442 | Commercial | 56 | 478 | Apartment | 155 |
| 443 | Residence | 59 | 479 | Apartment | 154 |
| 444 | Residence | 59 | 480 | Apartment | 46 |
| 445 | Residence | 170 | 481 | Apartment | 46 |
| 446 | Residence | 137 | 482 | Apartment | 56 |
| 447 | Residence | 133 | 483 | Apartment | 107 |
| 448 | Residence | 153 | 484 | Apartment | 141 |
| 449 | Residence | 192 | 485 | Apartment | 146 |
| 450 | Residence | 181 | 486 | Commercial | 3 |
| 451 | Commercial | 119 | 487 | Commercial | 35 |
| 452 | Residence | 181 | 488 | Commercial | 135 |
| 453 | Residence | 72 | 489 | Commercial | 144 |
| 454 | Residence | 75 | 490 | Commercial | 147 |
| 455 | Commercial | 20 | 491 | Commercial | 154 |
| 456 | Residence | 61 | 492 | Commercial | 138 |
| 457 | Residence | 55 | | | |
| 458 | Residence | 55 | 494 | Commercial | 135 |
| 459 | Residence | 54 | 495 | Commercial | 16 |
| 460 | Residence | 54 | 496 | Commercial | 130 |
| 461 | Residence | 53 | 497 | Commercial | 111 |
| 462 | Residence | 31 | 498 | Commercial | 9 |
| 463 | Commercial | 50 | 499 | Commercial | 21 |
| 464 | Residence | 75 | 500 | Commercial | 8 |
| 465 | Residence | 38 | 501 | Commercial | 142 |
| 466 | Apartment | 40 | 502 | Commercial | 184 |
| 467 | Apartment | 37 | | | |
| 468 | Residence | 114 | 504 | Commercial | 12 |

TABLE 7-1A

Structures Within 200 feet of Preliminary ROW of the Preferred Route

| Structure ID Number | Structure Type | Distance from Edge of Preliminary ROW (feet)* | Structure ID Number | Structure Type | Distance from Edge of Preliminary ROW (feet)* |
|---------------------|----------------|---|---------------------|----------------|---|
| 505 | Commercial | 49 | 541 | Residence | 0 |
| 506 | Church | 30 | 542 | Residence | 71 |
| 507 | Commercial | 0 | 543 | Residence | 134 |
| 508 | Commercial | 57 | 544 | Residence | 136 |
| 509 | Residence | 186 | 545 | Residence | 131 |
| 510 | Commercial | 93 | 546 | Residence | 105 |
| 511 | Commercial | 33 | 547 | Residence | 107 |
| 512 | Residence | 102 | 548 | Residence | 95 |
| 513 | Residence | 6 | 549 | Residence | 97 |
| 514 | Residence | 194 | 550 | Residence | 103 |
| 515 | Residence | 147 | 551 | Residence | 157 |
| 516 | Residence | 40 | | | |
| 517 | Residence | 196 | 553 | Residence | 94 |
| 518 | Residence | 135 | | | |
| 519 | Residence | 0 | 555 | Residence | 153 |
| 520 | Residence | 60 | 556 | Residence | 85 |
| 521 | Residence | 134 | 557 | Residence | 99 |
| 522 | Commercial | 0 | 558 | Residence | 60 |
| 523 | Residence | 120 | 559 | Commercial | 11 |
| 524 | Residence | 125 | 560 | Commercial | 75 |
| 525 | Residence | 95 | 561 | Residence | 64 |
| 526 | Residence | 64 | 562 | Residence | 63 |
| 527 | Residence | 117 | 563 | Residence | 93 |
| 528 | Residence | 122 | 564 | Commercial | 33 |
| 529 | Residence | 199 | 565 | Residence | 136 |
| 530 | Residence | 96 | 566 | Residence | 56 |
| 531 | Residence | 63 | 567 | Residence | 78 |
| 532 | Residence | 64 | 568 | Residence | 131 |
| 533 | Residence | 98 | 569 | Residence | 91 |
| 534 | Residence | 191 | 570 | Residence | 94 |
| 535 | Residence | 87 | 571 | Residence | 68 |
| 536 | Residence | 87 | 572 | Residence | 155 |
| 537 | Residence | 77 | 573 | Commercial | 101 |
| 538 | Residence | 86 | 574 | Residence | 111 |
| 539 | Residence | 102 | 575 | Residence | 67 |
| 540 | Residence | 139 | 576 | Residence | 57 |

TABLE 7-1A

Structures Within 200 feet of Preliminary ROW of the Preferred Route

| Structure ID Number | Structure Type | Distance from Edge of Preliminary ROW (feet)* | Structure ID Number | Structure Type | Distance from Edge of Preliminary ROW (feet)* |
|---------------------|----------------|---|---------------------|----------------|---|
| 577 | Residence | 51 | 613 | Commercial | 139 |
| 578 | Residence | 100 | 614 | Commercial | 64 |
| 579 | Residence | 117 | 615 | Industrial | 73 |
| 580 | Residence | 146 | 616 | Industrial | 198 |
| 581 | Residence | 164 | 617 | Commercial | 181 |
| 582 | Residence | 185 | 618 | Commercial | 59 |
| 583 | Residence | 172 | 619 | Commercial | 161 |
| 584 | Residence | 0 | 620 | Commercial | 69 |
| 585 | Residence | 117 | 621 | Commercial | 122 |
| 586 | Residence | 140 | 622 | Commercial | 188 |
| 587 | Residence | 168 | 623 | Commercial | 112 |
| 588 | Commercial | 89 | 624 | Commercial | 181 |
| 589 | Commercial | 142 | 625 | Commercial | 84 |
| 590 | Commercial | 30 | 626 | Residence | 170 |
| 591 | Commercial | 8 | 627 | Residence | 166 |
| 592 | Commercial | 177 | 628 | Commercial | 155 |
| 593 | Commercial | 17 | 629 | Medical | 97 |
| 594 | Commercial | 187 | 630 | Commercial | 2 |
| 595 | Commercial | 125 | 631 | Industrial | 0 |
| 596 | Commercial | 34 | 632 | Industrial | 86 |
| 597 | Commercial | 110 | 633 | Commercial | 82 |
| 598 | Commercial | 112 | 634 | Commercial | 5 |
| 599 | Commercial | 47 | 635 | Industrial | 22 |
| 600 | Commercial | 129 | 636 | Commercial | 157 |
| 601 | Commercial | 130 | 637 | Commercial | 106 |
| 602 | Commercial | 81 | 638 | Commercial | 7 |
| 603 | Commercial | 127 | 639 | Commercial | 61 |
| 604 | Commercial | 141 | 640 | Commercial | 115 |
| 605 | Commercial | 149 | 1298 | Residence | 189 |
| 606 | Commercial | 156 | 1299 | Residence | 198 |
| 607 | Commercial | 91 | 1300 | Commercial | 198 |
| 608 | Commercial | 40 | 1301 | Residence | 199 |
| 609 | Industrial | 22 | 1302 | Residence | 110 |
| 610 | Commercial | 15 | 1303 | Residence | 108 |
| 611 | Industrial | 17 | | | |
| 612 | Residence | 181 | | | |

TABLE 7-1B

Structures within 200 feet of Preliminary ROW of the Alternate Route

| Structure ID Number | Structure Type | Distance from Edge of Preliminary ROW (feet)* | Structure ID Number | Structure Type | Distance from Edge of Preliminary ROW (feet)* |
|---------------------|----------------|---|---------------------|----------------|---|
| 1 | Residence | 158 | 678 | Commercial | 70 |
| 2 | Commercial | 104 | 679 | Commercial | 30 |
| 3 | Industrial | 145 | 680 | Commercial | 87 |
| 4 | Industrial | 182 | 681 | Commercial | 119 |
| 5 | Manufacturing | 124 | 682 | Commercial | 125 |
| 6 | Residence | 59 | 683 | Commercial | 121 |
| | | | 684 | Commercial | 122 |
| 8 | Commercial | 112 | 685 | Commercial | 122 |
| 9 | Commercial | 152 | 686 | Commercial | 115 |
| 10 | Commercial | 145 | 687 | Commercial | 115 |
| | | | 688 | Residence | 199 |
| 12 | Commercial | 130 | 689 | Commercial | 46 |
| 13 | Residence | 128 | 690 | Commercial | 137 |
| 14 | Commercial | 117 | 691 | Industrial | 5 |
| 15 | Residence | 117 | 692 | Commercial | 155 |
| 16 | Commercial | 11 | 693 | Residence | 37 |
| 17 | Commercial | 125 | 694 | Commercial | 21 |
| 18 | Commercial | 27 | 695 | Commercial | 50 |
| 20 | Industrial | 26 | 696 | Industrial | 22 |
| 659 | Residence | 136 | 697 | Commercial | 180 |
| 660 | Residence | 115 | 698 | Commercial | 180 |
| 661 | Residence | 115 | 700 | Commercial | 144 |
| 662 | Residence | 113 | 701 | Manufacturing | 65 |
| 663 | Residence | 91 | 702 | Commercial | 141 |
| 664 | Residence | 106 | 703 | Commercial | 186 |
| 665 | Residence | 160 | 704 | Industrial | 105 |
| 666 | Residence | 111 | 705 | Commercial | 10 |
| 667 | Residence | 89 | 706 | Government | 20 |
| 668 | Commercial | 141 | 707 | Commercial | 47 |
| 669 | Residence | 81 | 708 | Commercial | 112 |
| 670 | Residence | 85 | 709 | Commercial | 34 |
| 671 | Commercial | 84 | 710 | Commercial | 68 |
| 672 | Commercial | 115 | 711 | Commercial | 180 |
| 673 | Residence | 127 | 712 | Commercial | 124 |
| 674 | Commercial | 120 | 713 | Commercial | 61 |
| 675 | Commercial | 37 | 714 | Commercial | 131 |
| 676 | Commercial | 157 | 715 | Commercial | 34 |

TABLE 7-1B

Structures within 200 feet of Preliminary ROW of the Alternate Route

| Structure ID Number | Structure Type | Distance from Edge of Preliminary ROW (feet)* | Structure ID Number | Structure Type | Distance from Edge of Preliminary ROW (feet)* |
|---------------------|----------------|---|---------------------|----------------|---|
| 716 | Commercial | 18 | 753 | Residence | 30 |
| 717 | Commercial | 165 | 754 | Residence | 112 |
| 718 | Commercial | 174 | 755 | Residence | 112 |
| 719 | Industrial | 9 | 756 | Commercial | 105 |
| 720 | Commercial | 190 | 757 | Residence | 100 |
| 721 | Commercial | 164 | 758 | Residence | 27 |
| 722 | Commercial | 75 | 759 | Residence | 28 |
| 723 | Commercial | 138 | 760 | Residence | 123 |
| 724 | Commercial | 87 | 761 | Residence | 96 |
| 725 | Residence | 50 | 762 | Residence | 25 |
| 726 | Commercial | 82 | 763 | Residence | 25 |
| 727 | Commercial | 179 | 764 | Residence | 159 |
| 728 | Industrial | 109 | 765 | Residence | 159 |
| 729 | Commercial | 66 | 766 | Commercial | 194 |
| 730 | Commercial | 46 | 767 | Residence | 24 |
| 731 | Commercial | 187 | 768 | Residence | 24 |
| 732 | Commercial | 33 | 769 | Residence | 24 |
| 733 | Commercial | 100 | 770 | Residence | 64 |
| 734 | Commercial | 49 | 771 | Commercial | 199 |
| 735 | Manufacturing | 92 | 772 | Residence | 34 |
| 736 | Commercial | 117 | 773 | Residence | 51 |
| 737 | Commercial | 136 | 774 | Commercial | 193 |
| 738 | Commercial | 131 | 775 | Residence | 68 |
| 739 | Commercial | 87 | 776 | Residence | 98 |
| 740 | Commercial | 193 | 777 | Residence | 71 |
| 741 | Commercial | 74 | 778 | Residence | 162 |
| 742 | Government | 19 | 779 | Residence | 62 |
| 743 | Commercial | 58 | 780 | Residence | 102 |
| 744 | Government | 11 | 781 | Residence | 194 |
| 745 | Residence | 175 | 782 | Residence | 126 |
| 746 | Residence | 175 | 783 | Residence | 30 |
| 747 | Residence | 134 | 784 | Residence | 182 |
| 748 | Residence | 169 | 785 | Residence | 43 |
| 749 | Church | 28 | 786 | Residence | 125 |
| 750 | Residence | 149 | 787 | Residence | 43 |
| 751 | Residence | 149 | 788 | Residence | 124 |
| 752 | Residence | 148 | 789 | Residence | 40 |

TABLE 7-1B

Structures within 200 feet of Preliminary ROW of the Alternate Route

| Structure ID Number | Structure Type | Distance from Edge of Preliminary ROW (feet)* | Structure ID Number | Structure Type | Distance from Edge of Preliminary ROW (feet)* |
|---------------------|----------------|---|---------------------|----------------|---|
| 790 | Residence | 39 | 827 | Residence | 169 |
| 791 | Residence | 37 | 828 | Residence | 95 |
| 792 | Residence | 177 | 829 | Commercial | 123 |
| 793 | Residence | 138 | 830 | Residence | 136 |
| 794 | Residence | 41 | 831 | Residence | 176 |
| 795 | Residence | 112 | 832 | Commercial | 93 |
| 796 | Residence | 40 | 833 | Residence | 141 |
| 797 | Residence | 40 | 834 | Residence | 120 |
| 798 | Residence | 50 | 835 | Commercial | 100 |
| 799 | Residence | 39 | 836 | Residence | 154 |
| 800 | Residence | 33 | 837 | Residence | 87 |
| 801 | Residence | 106 | 838 | Commercial | 84 |
| 802 | Residence | 132 | 839 | Residence | 91 |
| 803 | Residence | 130 | 840 | Residence | 133 |
| 804 | Residence | 106 | 841 | Residence | 90 |
| 805 | Residence | 117 | 842 | Residence | 147 |
| 806 | Residence | 20 | 843 | Residence | 99 |
| 807 | Residence | 22 | 844 | Government | 99 |
| 808 | Residence | 25 | 845 | Church | 102 |
| 809 | Residence | 20 | 846 | Residence | 96 |
| 810 | Residence | 17 | 847 | Residence | 86 |
| 811 | Residence | 198 | 848 | Residence | 93 |
| 812 | Residence | 79 | 849 | Residence | 98 |
| 813 | Residence | 16 | 850 | Residence | 86 |
| 814 | Residence | 25 | 851 | Residence | 96 |
| 815 | Residence | 70 | 852 | Residence | 166 |
| 816 | Residence | 18 | 853 | Residence | 140 |
| 817 | Residence | 35 | 854 | Residence | 96 |
| 818 | Residence | 36 | 855 | Residence | 104 |
| 819 | Residence | 28 | 856 | Residence | 95 |
| 820 | Residence | 17 | 857 | Residence | 93 |
| 821 | Residence | 24 | 858 | Residence | 98 |
| 822 | Residence | 49 | 859 | Residence | 108 |
| 823 | Residence | 23 | 860 | Residence | 92 |
| 824 | Residence | 48 | 861 | Residence | 96 |
| 825 | Residence | 34 | 862 | Church | 107 |
| 826 | Residence | 149 | 863 | Residence | 200 |

TABLE 7-1B

Structures within 200 feet of Preliminary ROW of the Alternate Route

| Structure ID Number | Structure Type | Distance from Edge of Preliminary ROW (feet)* | Structure ID Number | Structure Type | Distance from Edge of Preliminary ROW (feet)* |
|---------------------|----------------|---|---------------------|----------------|---|
| 864 | Residence | 96 | 902 | Industrial | 171 |
| 865 | Residence | 99 | 903 | Commercial | 22 |
| 866 | Residence | 95 | 904 | Industrial | 190 |
| 867 | Residence | 96 | 905 | Commercial | 11 |
| 868 | Residence | 166 | 906 | Industrial | 66 |
| 869 | Commercial | 84 | 907 | Industrial | 8 |
| 870 | Residence | 99 | 908 | Industrial | 6 |
| 871 | Residence | 94 | 909 | Industrial | 39 |
| 872 | Residence | 196 | 910 | Commercial | 166 |
| 873 | Residence | 101 | 911 | Commercial | 6 |
| 874 | Residence | 96 | 912 | Industrial | 15 |
| 875 | Residence | 112 | 913 | Commercial | 2 |
| 876 | Residence | 184 | 914 | Commercial | 192 |
| 877 | Residence | 94 | 915 | Industrial | 112 |
| 878 | Residence | 94 | 916 | Industrial | 77 |
| 879 | Residence | 96 | 917 | Industrial | 157 |
| 880 | Residence | 94 | 918 | Industrial | 0 |
| 881 | Residence | 94 | 919 | Commercial | 0 |
| 882 | Commercial | 84 | 920 | Industrial | 130 |
| 883 | Residence | 93 | 921 | Industrial | 128 |
| 884 | Commercial | 99 | 922 | Industrial | 143 |
| 885 | Residence | 87 | 923 | Industrial | 3 |
| 886 | Commercial | 124 | 924 | Commercial | 2 |
| 887 | Commercial | 92 | 925 | Commercial | 49 |
| 888 | Commercial | 41 | 926 | Commercial | 114 |
| 889 | Government | 0 | 927 | Commercial | 70 |
| 890 | Commercial | 15 | 928 | Commercial | 57 |
| 891 | Industrial | 74 | 929 | Government | 26 |
| 893 | Commercial | 136 | 930 | Residence | 178 |
| 894 | Commercial | 47 | 931 | Residence | 139 |
| 895 | Commercial | 101 | 932 | Residence | 98 |
| 896 | Commercial | 65 | 933 | Residence | 48 |
| 897 | Commercial | 98 | 934 | Residence | 17 |
| 898 | Manufacturing | 153 | 935 | Residence | 180 |
| 899 | Commercial | 0 | 936 | Residence | 129 |
| 900 | Commercial | 136 | 937 | Residence | 80 |
| 901 | Commercial | 197 | 938 | Residence | 31 |

TABLE 7-1B

Structures within 200 feet of Preliminary ROW of the Alternate Route

| Structure ID Number | Structure Type | Distance from Edge of Preliminary ROW (feet)* | Structure ID Number | Structure Type | Distance from Edge of Preliminary ROW (feet)* |
|---------------------|----------------|---|---------------------|----------------|---|
| 939 | Residence | 28 | 976 | Commercial | 78 |
| 940 | Residence | 126 | 977 | Residence | 119 |
| 941 | Residence | 44 | 978 | Residence | 16 |
| 942 | Residence | 46 | 979 | Residence | 180 |
| 943 | Residence | 135 | 980 | Residence | 66 |
| 944 | Residence | 59 | 981 | Commercial | 20 |
| 945 | Residence | 142 | 982 | Residence | 105 |
| 946 | Residence | 48 | 983 | Residence | 33 |
| 947 | Residence | 86 | 984 | Residence | 136 |
| 948 | Residence | 144 | 985 | Commercial | 28 |
| 949 | Residence | 64 | 986 | Commercial | 34 |
| 950 | Residence | 28 | 987 | Residence | 194 |
| 951 | Residence | 119 | 988 | Commercial | 34 |
| 952 | Residence | 14 | 989 | Commercial | 6 |
| 953 | Residence | 164 | 990 | Residence | 112 |
| 954 | Residence | 55 | 991 | Residence | 181 |
| 955 | Residence | 23 | 992 | Commercial | 117 |
| 956 | Commercial | 38 | 993 | Residence | 181 |
| 957 | Residence | 25 | 994 | Residence | 137 |
| 958 | Commercial | 38 | 995 | Commercial | 32 |
| 959 | Commercial | 92 | 996 | Commercial | 168 |
| 960 | Commercial | 150 | 997 | Commercial | 112 |
| 961 | Commercial | 32 | 998 | Residence | 97 |
| 962 | Commercial | 127 | 999 | Commercial | 36 |
| 963 | Residence | 51 | 1000 | Residence | 187 |
| 964 | Commercial | 113 | 1001 | Residence | 33 |
| 965 | Commercial | 15 | 1002 | Residence | 64 |
| 966 | Residence | 41 | 1003 | Commercial | 112 |
| 967 | Residence | 104 | 1004 | Residence | 27 |
| 968 | Residence | 197 | 1005 | Residence | 23 |
| 969 | Residence | 146 | 1006 | Residence | 21 |
| 970 | Residence | 21 | 1007 | Residence | 60 |
| 971 | Residence | 133 | 1008 | Residence | 101 |
| 972 | Residence | 19 | 1009 | Commercial | 199 |
| 973 | Residence | 123 | 1010 | Residence | 142 |
| 974 | Residence | 16 | 1011 | Residence | 182 |
| 975 | Residence | 16 | 1012 | Residence | 22 |

TABLE 7-1B

Structures within 200 feet of Preliminary ROW of the Alternate Route

| Structure ID Number | Structure Type | Distance from Edge of Preliminary ROW (feet)* | Structure ID Number | Structure Type | Distance from Edge of Preliminary ROW (feet)* |
|---------------------|----------------|---|---------------------|----------------|---|
| 1013 | Residence | 169 | 1050 | Residence | 26 |
| 1014 | Residence | 25 | 1051 | Residence | 93 |
| 1015 | Residence | 16 | 1052 | Residence | 5 |
| 1016 | Residence | 21 | 1053 | Residence | 195 |
| 1017 | Residence | 150 | 1054 | Residence | 24 |
| 1018 | Residence | 197 | 1055 | Residence | 166 |
| 1019 | Residence | 196 | 1056 | Residence | 81 |
| 1020 | Residence | 93 | 1057 | Residence | 23 |
| 1021 | Residence | 23 | 1058 | Residence | 19 |
| 1022 | Residence | 198 | 1059 | Residence | 179 |
| 1023 | Residence | 25 | 1060 | Residence | 177 |
| 1024 | Residence | 179 | 1061 | Residence | 7 |
| 1025 | Residence | 158 | 1062 | Residence | 139 |
| 1026 | Residence | 18 | 1063 | Residence | 87 |
| 1027 | Residence | 24 | 1064 | Residence | 83 |
| 1028 | Residence | 25 | 1065 | Residence | 133 |
| 1029 | Residence | 188 | 1066 | Residence | 16 |
| 1030 | Residence | 22 | 1067 | Residence | 193 |
| 1031 | Residence | 160 | 1068 | Residence | 189 |
| 1032 | Residence | 19 | 1069 | Residence | 4 |
| 1033 | Residence | 24 | 1070 | Residence | 150 |
| 1034 | Residence | 192 | 1071 | Residence | 23 |
| 1035 | Residence | 181 | 1072 | Residence | 191 |
| 1036 | Residence | 22 | 1073 | Residence | 19 |
| 1037 | Residence | 187 | 1074 | Residence | 190 |
| 1038 | Residence | 23 | 1075 | Residence | 20 |
| 1039 | Residence | 180 | 1076 | Residence | 130 |
| 1040 | Residence | 25 | 1077 | Residence | 21 |
| 1041 | Residence | 29 | 1078 | Residence | 17 |
| 1042 | Residence | 180 | 1079 | Residence | 151 |
| 1043 | Residence | 25 | 1080 | Residence | 97 |
| 1044 | Residence | 190 | 1081 | Residence | 28 |
| 1045 | Residence | 9 | 1082 | Residence | 17 |
| 1046 | Residence | 24 | 1083 | Residence | 53 |
| 1047 | Residence | 180 | 1084 | Residence | 184 |
| 1048 | Residence | 193 | 1085 | Residence | 8 |
| 1049 | Residence | 19 | 1086 | Residence | 177 |

TABLE 7-1B

Structures within 200 feet of Preliminary ROW of the Alternate Route

| Structure ID Number | Structure Type | Distance from Edge of Preliminary ROW (feet)* | Structure ID Number | Structure Type | Distance from Edge of Preliminary ROW (feet)* |
|---------------------|----------------|---|---------------------|----------------|---|
| 1087 | Residence | 35 | 1124 | Commercial | 146 |
| 1088 | Residence | 19 | 1125 | Commercial | 80 |
| 1089 | Residence | 180 | 1126 | Residence | 6 |
| 1090 | Residence | 162 | 1127 | Residence | 78 |
| 1091 | Residence | 14 | 1128 | Residence | 168 |
| 1092 | Residence | 162 | 1129 | Residence | 5 |
| 1093 | Residence | 19 | 1130 | Residence | 75 |
| 1094 | Residence | 67 | 1131 | Residence | 169 |
| 1095 | Residence | 25 | 1132 | Residence | 0 |
| 1096 | Residence | 22 | 1133 | Residence | 176 |
| 1097 | Residence | 38 | 1134 | Residence | 158 |
| 1098 | Residence | 154 | 1135 | Residence | 0 |
| 1099 | Residence | 13 | 1136 | Residence | 197 |
| 1100 | Residence | 26 | 1137 | Residence | 70 |
| 1101 | Residence | 119 | 1138 | Residence | 173 |
| 1102 | Residence | 12 | 1139 | Residence | 0 |
| 1103 | Residence | 170 | 1140 | Residence | 179 |
| 1104 | Residence | 81 | 1141 | Residence | 0 |
| 1105 | Residence | 84 | 1142 | Residence | 82 |
| 1106 | Residence | 13 | 1143 | Residence | 83 |
| 1107 | Residence | 134 | 1144 | Residence | 3 |
| 1108 | Residence | 32 | 1145 | Residence | 141 |
| 1109 | Residence | 88 | 1146 | Residence | 171 |
| 1110 | Residence | 127 | 1147 | Residence | 6 |
| 1111 | Residence | 24 | 1148 | Residence | 183 |
| 1112 | Residence | 168 | 1149 | Residence | 182 |
| 1113 | Residence | 165 | 1150 | Residence | 78 |
| 1114 | Commercial | 104 | 1151 | Residence | 139 |
| 1115 | Residence | 16 | 1152 | Residence | 174 |
| 1116 | Residence | 79 | 1153 | Residence | 115 |
| 1117 | Residence | 125 | 1154 | Residence | 6 |
| 1118 | Commercial | 132 | 1155 | Residence | 174 |
| 1119 | Residence | 181 | 1156 | Residence | 57 |
| 1120 | Commercial | 74 | 1157 | Residence | 4 |
| 1121 | Residence | 69 | 1158 | Residence | 0 |
| 1122 | Residence | 4 | 1159 | Residence | 32 |
| 1123 | Residence | 66 | 1160 | Commercial | 41 |

TABLE 7-1B

Structures within 200 feet of Preliminary ROW of the Alternate Route

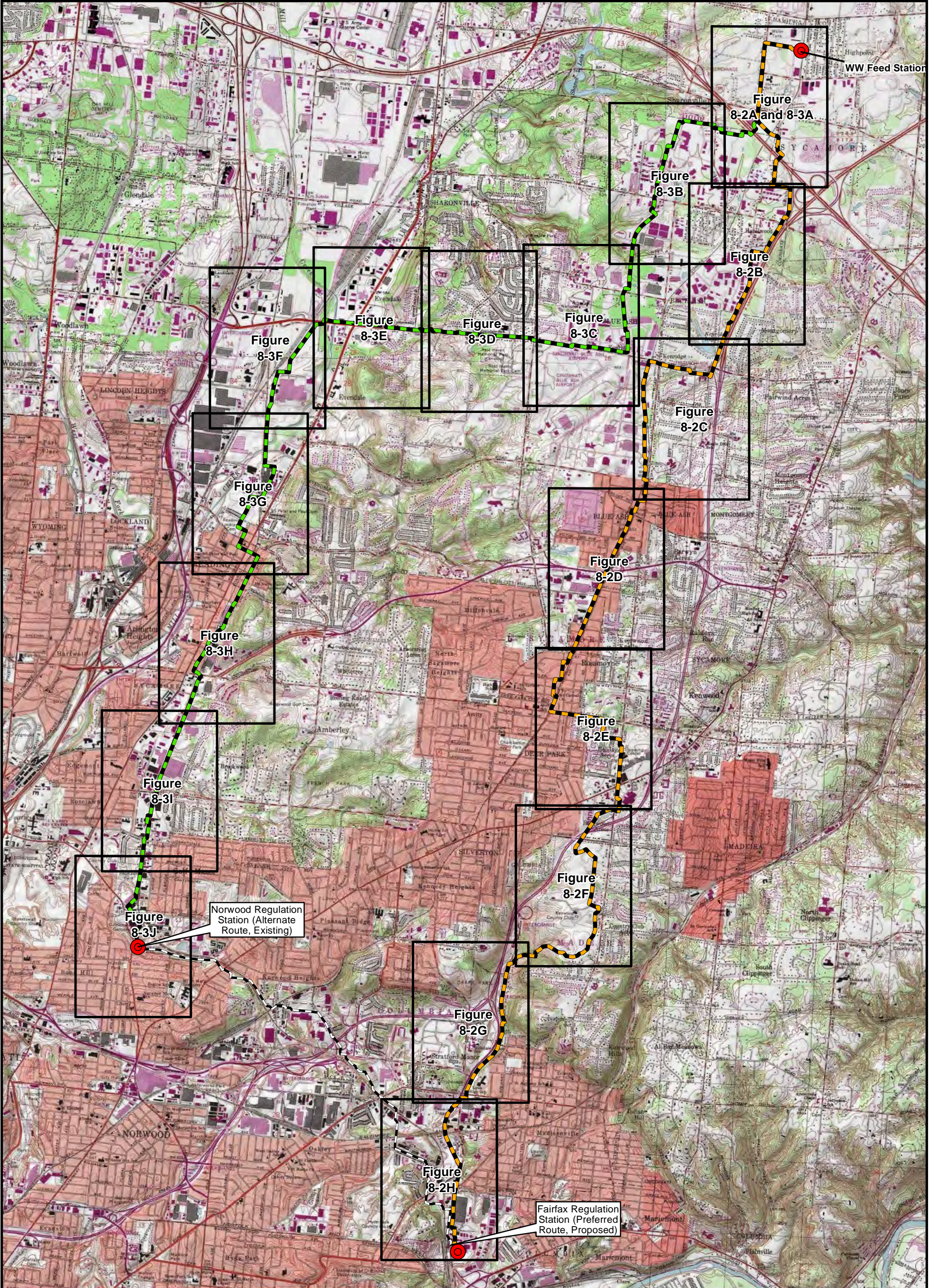
| Structure ID Number | Structure Type | Distance from Edge of Preliminary ROW (feet)* | Structure ID Number | Structure Type | Distance from Edge of Preliminary ROW (feet)* |
|---------------------|----------------|---|---------------------|----------------|---|
| 1161 | Commercial | 41 | 1198 | Residence | 127 |
| 1162 | Commercial | 43 | 1199 | Residence | 64 |
| 1163 | Commercial | 43 | 1200 | Commercial | 62 |
| 1164 | Residence | 197 | 1201 | Commercial | 141 |
| 1165 | Commercial | 195 | 1202 | Commercial | 45 |
| 1166 | Commercial | 158 | 1203 | Commercial | 126 |
| 1167 | Commercial | 133 | 1204 | Commercial | 30 |
| 1168 | Commercial | 158 | 1205 | Commercial | 139 |
| 1169 | Commercial | 135 | 1206 | Industrial | 135 |
| 1170 | Commercial | 179 | 1207 | Commercial | 58 |
| 1171 | Commercial | 102 | 1208 | Manufacturing | 190 |
| 1172 | Commercial | 81 | 1209 | Commercial | 168 |
| 1173 | Commercial | 179 | 1210 | Commercial | 155 |
| 1174 | Commercial | 132 | 1211 | Commercial | 159 |
| 1175 | Commercial | 162 | 1212 | Commercial | 168 |
| 1176 | Commercial | 74 | 1213 | Commercial | 170 |
| 1177 | Commercial | 111 | 1214 | Industrial | 93 |
| 1178 | Commercial | 182 | 1215 | Industrial | 164 |
| 1179 | Commercial | 127 | 1216 | Industrial | 127 |
| 1180 | Commercial | 146 | 1217 | Manufacturing | 134 |
| 1181 | Commercial | 84 | 1218 | Commercial | 108 |
| 1182 | Commercial | 160 | 1219 | Commercial | 141 |
| 1183 | Commercial | 110 | 1220 | Commercial | 119 |
| 1184 | Commercial | 181 | 1221 | Commercial | 0 |
| 1185 | Residence | 165 | 1222 | Commercial | 21 |
| 1186 | Residence | 153 | 1223 | Commercial | 0 |
| 1187 | Residence | 56 | 1224 | Commercial | 17 |
| 1188 | Residence | 147 | 1225 | Commercial | 120 |
| 1189 | Commercial | 91 | 1226 | Commercial | 119 |
| 1190 | Commercial | 105 | 1227 | Commercial | 142 |
| 1191 | Residence | 30 | 1228 | Industrial | 153 |
| 1192 | Commercial | 98 | 1229 | Industrial | 97 |
| 1193 | Commercial | 113 | 1230 | Commercial | 105 |
| 1194 | Residence | 111 | 1231 | Commercial | 93 |
| 1195 | Commercial | 23 | 1232 | Manufacturing | 81 |
| 1196 | Residence | 121 | 1233 | Commercial | 192 |
| 1197 | Residence | 54 | 1234 | Manufacturing | 166 |

TABLE 7-1B

Structures within 200 feet of Preliminary ROW of the Alternate Route

| Structure ID Number | Structure Type | Distance from Edge of Preliminary ROW (feet)* | Structure ID Number | Structure Type | Distance from Edge of Preliminary ROW (feet)* |
|---------------------|----------------|---|---------------------|----------------|---|
| 1235 | Commercial | 2 | 1267 | Manufacturing | 76 |
| 1236 | Industrial | 199 | 1268 | Manufacturing | 91 |
| 1237 | Industrial | 198 | 1269 | Commercial | 85 |
| 1238 | Commercial | 41 | 1270 | Industrial | 117 |
| 1239 | Industrial | 70 | 1271 | Commercial | 157 |
| 1240 | Industrial | 197 | 1272 | Industrial | 177 |
| 1241 | Commercial | 163 | 1273 | Industrial | 0 |
| 1242 | Industrial | 45 | 1274 | Industrial | 24 |
| 1243 | Commercial | 161 | 1275 | Commercial | 39 |
| 1244 | Manufacturing | 21 | 1276 | Commercial | 13 |
| 1245 | Commercial | 105 | 1277 | Commercial | 63 |
| 1246 | Commercial | 138 | 1278 | Commercial | 96 |
| 1247 | Commercial | 20 | 1279 | Commercial | 5 |
| 1248 | Commercial | 192 | 1280 | Commercial | 15 |
| 1249 | Commercial | 92 | 1281 | Industrial | 21 |
| 1250 | Commercial | 190 | 1282 | Commercial | 21 |
| 1251 | Manufacturing | 52 | 1283 | Residence | 36 |
| 1252 | Commercial | 153 | 1284 | Residence | 43 |
| 1253 | Industrial | 60 | 1285 | Commercial | 45 |
| 1254 | Commercial | 117 | 1286 | Residence | 44 |
| 1255 | Commercial | 86 | 1287 | Commercial | 97 |
| 1256 | Commercial | 29 | 1288 | Commercial | 38 |
| 1257 | Commercial | 89 | 1289 | Commercial | 25 |
| 1258 | Commercial | 152 | 1290 | Industrial | 127 |
| 1259 | Commercial | 81 | 1291 | Commercial | 19 |
| 1260 | Industrial | 92 | 1292 | Commercial | 113 |
| 1261 | Commercial | 91 | 1293 | Commercial | 7 |
| 1262 | Commercial | 153 | 1294 | Commercial | 158 |
| 1263 | Commercial | 181 | 1295 | Commercial | 67 |
| 1264 | Commercial | 175 | 1296 | Commercial | 102 |
| 1265 | Commercial | 176 | 1297 | Commercial | 167 |
| 1266 | Government | 29 | | | |

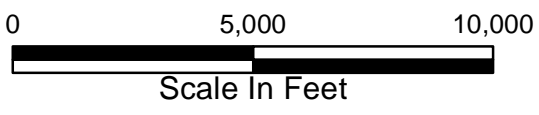
*Structures listed as “0 feet” may be at the edge of or within the nominal preliminary ROW. Note that the preliminary ROW used in this analysis is not final. Duke Energy Ohio understands that the ROW may have to be reduced and modified in places during the development of the final ROW and engineering design.



LEGEND:

- Stations (Existing and Proposed)
- Preferred Route
- Alternate Route
- Existing Line V
- Figure Key

BASE MAP SOURCE:
USGS 7.5-minute Topographic Quadrangle
Cincinnati East 1982, Glendale 1982
Madeira 1983, Mason 1982



C314V Central Corridor Pipeline Extension Project

**FIGURE 8-1
ECOLOGY INDEX MAP**

PN: 672247
CREATED BY: TH
REVIEWED BY: JN



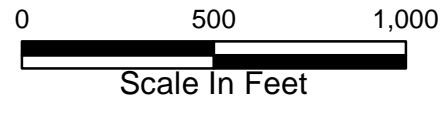


LEGEND:

- Station
- Preferred Route
- Ecological Field Survey Corridor - 280 feet wide
- Delineated Stream
- NHD Stream
- NWI Wetland
- Station
- Delineated Pond
- Delineated Wetlands**
- Palustrine Emergent
- Palustrine Forested
- Palustrine Scrub Shrub

BASE MAP SOURCE:
NAIP 2015

SPATIAL DATA SOURCES:
NHD Streams - National Hydrography Dataset
NWI Wetlands - US Fish and Wildlife Service



C314V Central
Corridor Pipeline
Extension Project

**FIGURE 8-2A,
PREFERRED ROUTE WETLAND AND
WATERBODIES DELINEATION MAP**

PN: 672247

CREATED BY:TH
REVIEWED BY:MF



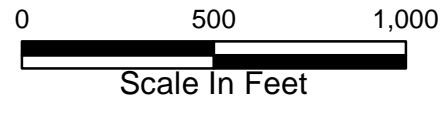


LEGEND:

- Station
- Preferred Route
- Ecological Field Survey Corridor - 280 feet wide
- Delineated Stream
- NHD Stream
- NWI Wetland
- Station
- Delineated Pond
- Delineated Wetlands**
- Palustrine Emergent
- Palustrine Forested
- Palustrine Scrub Shrub

BASE MAP SOURCE:
NAIP 2015

SPATIAL DATA SOURCES:
NHD Streams - National Hydrography Dataset
NWI Wetlands - US Fish and Wildlife Service



C314V Central
Corridor Pipeline
Extension Project

FIGURE 8-2B,
PREFERRED ROUTE WETLAND AND
WATERBODIES DELINEATION MAP

PN: 672247
CREATED BY: TH
REVIEWED BY: MF





LEGEND:

- Station
- Preferred Route
- Ecological Field Survey Corridor - 280 feet wide
- Delineated Stream
- NHD Stream
- NWI Wetland
- Station
- Delineated Pond
- Palustrine Emergent
- Palustrine Forested
- Palustrine Scrub Shrub

BASE MAP SOURCE:
NAIP 2015

SPATIAL DATA SOURCES:
NHD Streams - National Hydrography Dataset
NWI Wetlands - US Fish and Wildlife Service



C314V Central
Corridor Pipeline
Extension Project

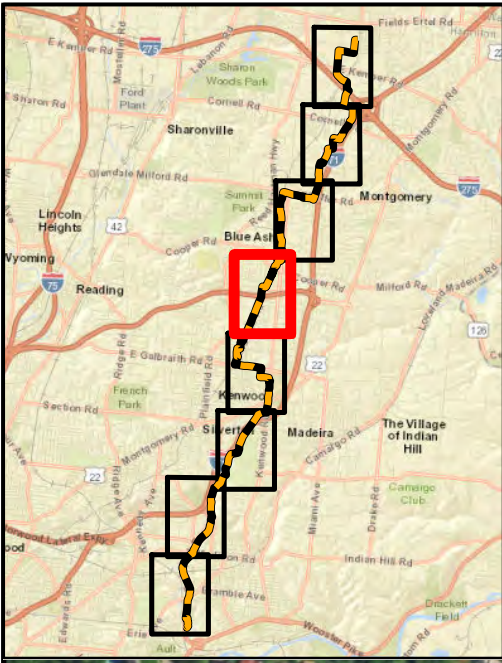
**FIGURE 8-2C,
PREFERRED ROUTE WETLAND AND
WATERBODIES DELINEATION MAP**

PN: 672247

CREATED BY:TH

REVIEWED BY:MF





LEGEND:

- Station
- Preferred Route
- Ecological Field Survey Corridor - 280 feet wide
- Delineated Stream
- NHD Stream
- NWI Wetland
- Station
- Delineated Pond
- Delineated Wetlands**
- Palustrine Emergent
- Palustrine Forested
- Palustrine Scrub Shrub

BASE MAP SOURCE:
NAIP 2015

SPATIAL DATA SOURCES:
NHD Streams - National Hydrography Dataset
NWI Wetlands - US Fish and Wildlife Service

0 500 1,000

Scale In Feet



C314V Central
Corridor Pipeline
Extension Project

**FIGURE 8-2D,
PREFERRED ROUTE WETLAND AND
WATERBODIES DELINEATION MAP**

PN: 672247

CREATED BY:TH

REVIEWED BY:MF





LEGEND:

- Station
- Preferred Route
- Ecological Field Survey Corridor - 280 feet wide
- Delineated Stream
- NHD Stream
- NWI Wetland
- Station
- Delineated Pond
- Palustrine Emergent
- Palustrine Forested
- Palustrine Scrub Shrub

BASE MAP SOURCE:
NAIP 2015

SPATIAL DATA SOURCES:
NHD Streams - National Hydrography Dataset
NWI Wetlands - US Fish and Wildlife Service

0 500 1,000

Scale In Feet



C314V Central
Corridor Pipeline
Extension Project

**FIGURE 8-2E,
PREFERRED ROUTE WETLAND AND
WATERBODIES DELINEATION MAP**

PN: 672247

CREATED BY:TH

REVIEWED BY:MF

