



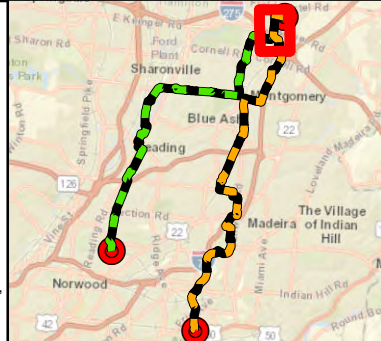
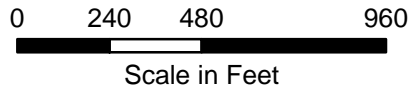
LEGEND:

- Preferred Route
- Alternate Route
- Existing or Future Regulation Station
- HDD Entry/Exit
- Municipal Boundary
- Temporary Workspace
- Permanent Access Road
- Temporary Access Road
- Fenceline
- Building Footprint**
- Commercial
- Residential
- Civic Building
- Industrial
- Hospital
- School

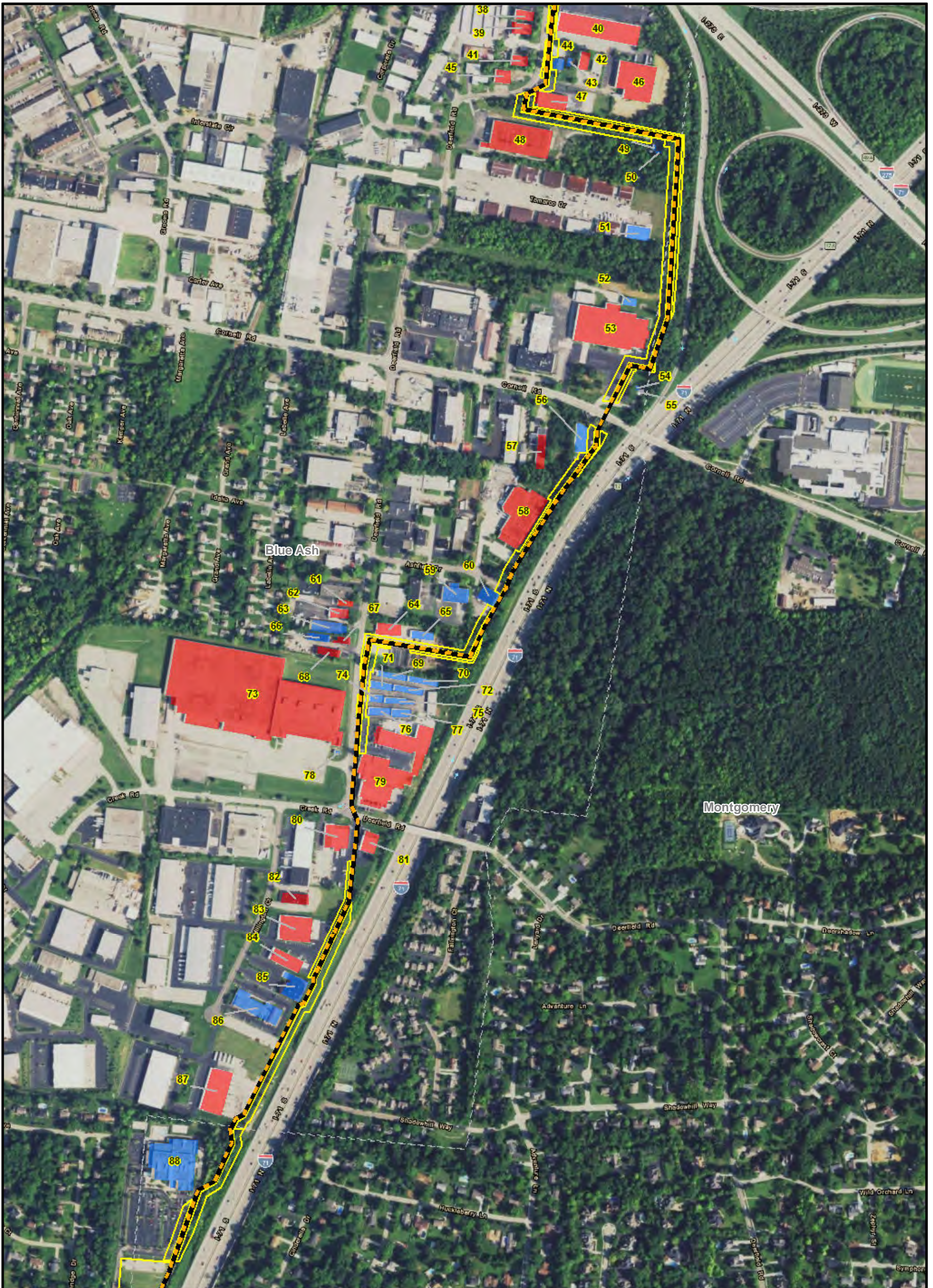


BASE MAP SOURCE:
 USGS 7.5-minute Topographic Quadrangle
 Cincinnati East 1982, Glendale 1982
 Madeira 1983, Mason 1982

*The structure data types are based on data from Hamilton County CAGIS files, and where warranted, specific structure types updated based on aerial photography and other sources.

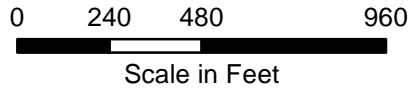


	C314V Central Corridor Pipeline Extension Project
FIGURE 7-2A STRUCTURES WITHIN 200 FEET* OF PERMANANT ROW BOUNDARY	
PN: 672247	
CREATED BY:	
REVIEWED BY:	



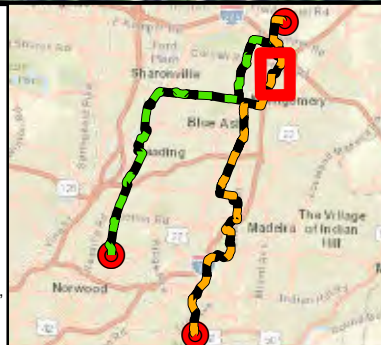
LEGEND:

- Preferred Route
- Alternate Route
- Existing or Future Regulation Station
- HDD Entry/Exit
- Municipal Boundary
- Temporary Workspace
- Permanent Access Road
- Temporary Access Road
- Fenceline
- Building Footprint**
- Commercial
- Residential
- Civic Building
- Industrial
- Hospital
- School



BASE MAP SOURCE:
USGS 7.5-minute Topographic Quadrangle
Cincinnati East 1982, Glendale 1982
Madeira 1983, Mason 1982

*The structure data types are based on data from Hamilton County CAGIS files, and where warranted, specific structure types updated based on aerial photography and other sources.

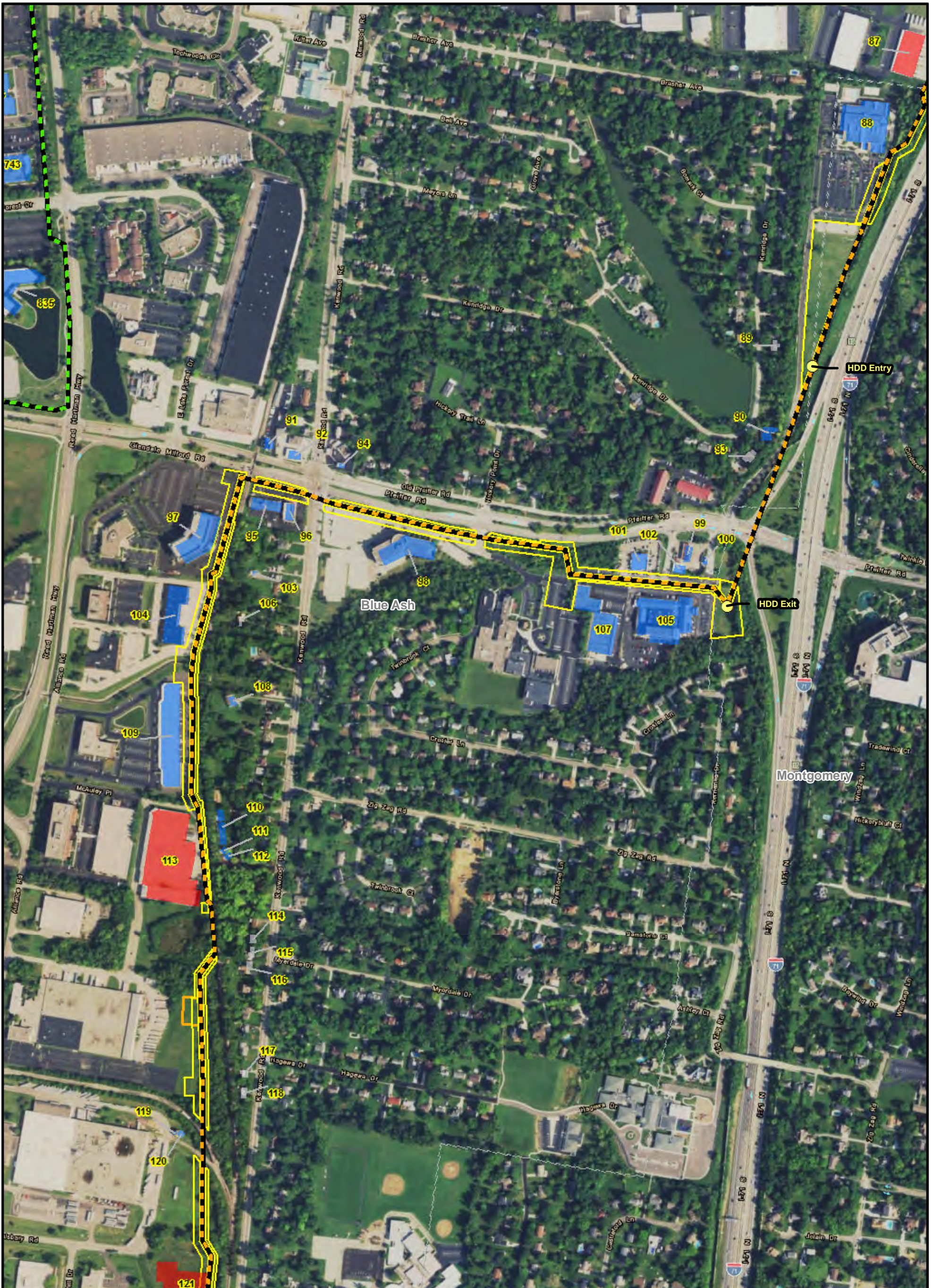


C314V Central Corridor Pipeline Extension Project

FIGURE 7-2C
STRUCTURES WITHIN 200 FEET*
OF PERMANANT ROW BOUNDARY

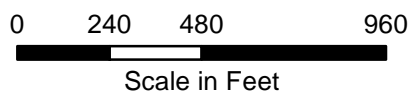
PN: 672247
CREATED BY:
REVIEWED BY:





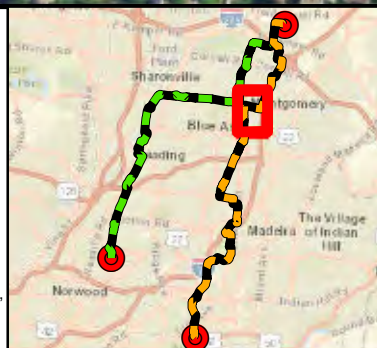
LEGEND:

- Preferred Route
- Alternate Route
- Existing or Future Regulation Station
- HDD Entry/Exit
- Municipal Boundary
- Temporary Workspace
- Permanent Access Road
- Temporary Access Road
- Fenceline
- Building Footprint**
- Commercial
- Residential
- Civic Building
- Industrial
- Hospital
- School



BASE MAP SOURCE:
USGS 7.5-minute Topographic Quadrangle
Cincinnati East 1982, Glendale 1982
Madeira 1983, Mason 1982

*The structure data types are based on data from Hamilton County CAGIS files, and where warranted, specific structure types updated based on aerial photography and other sources.



C314V Central Corridor Pipeline Extension Project

FIGURE 7-2B
STRUCTURES WITHIN 200 FEET*
OF PERMANANT ROW BOUNDARY

PN: 672247

CREATED BY:

REVIEWED BY:





LEGEND:

- Preferred Route
- Alternate Route
- Existing or Future Regulation Station
- HDD Entry/Exit
- Municipal Boundary
- Temporary Workspace
- Permanent Access Road
- Temporary Access Road
- Fenceline
- Building Footprint**
- Commercial
- Residential
- Civic Building
- Industrial
- Hospital
- School



BASE MAP SOURCE:
USGS 7.5-minute Topographic Quadrangle
Cincinnati East 1982, Glendale 1982
Madeira 1983, Mason 1982

*The structure data types are based on data from Hamilton County CAGIS files, and where warranted, specific structure types updated based on aerial photography and other sources.



C314V Central Corridor Pipeline Extension Project

FIGURE 7-2D
STRUCTURES WITHIN 200 FEET*
OF PERMANANT ROW BOUNDARY

PN: 672247

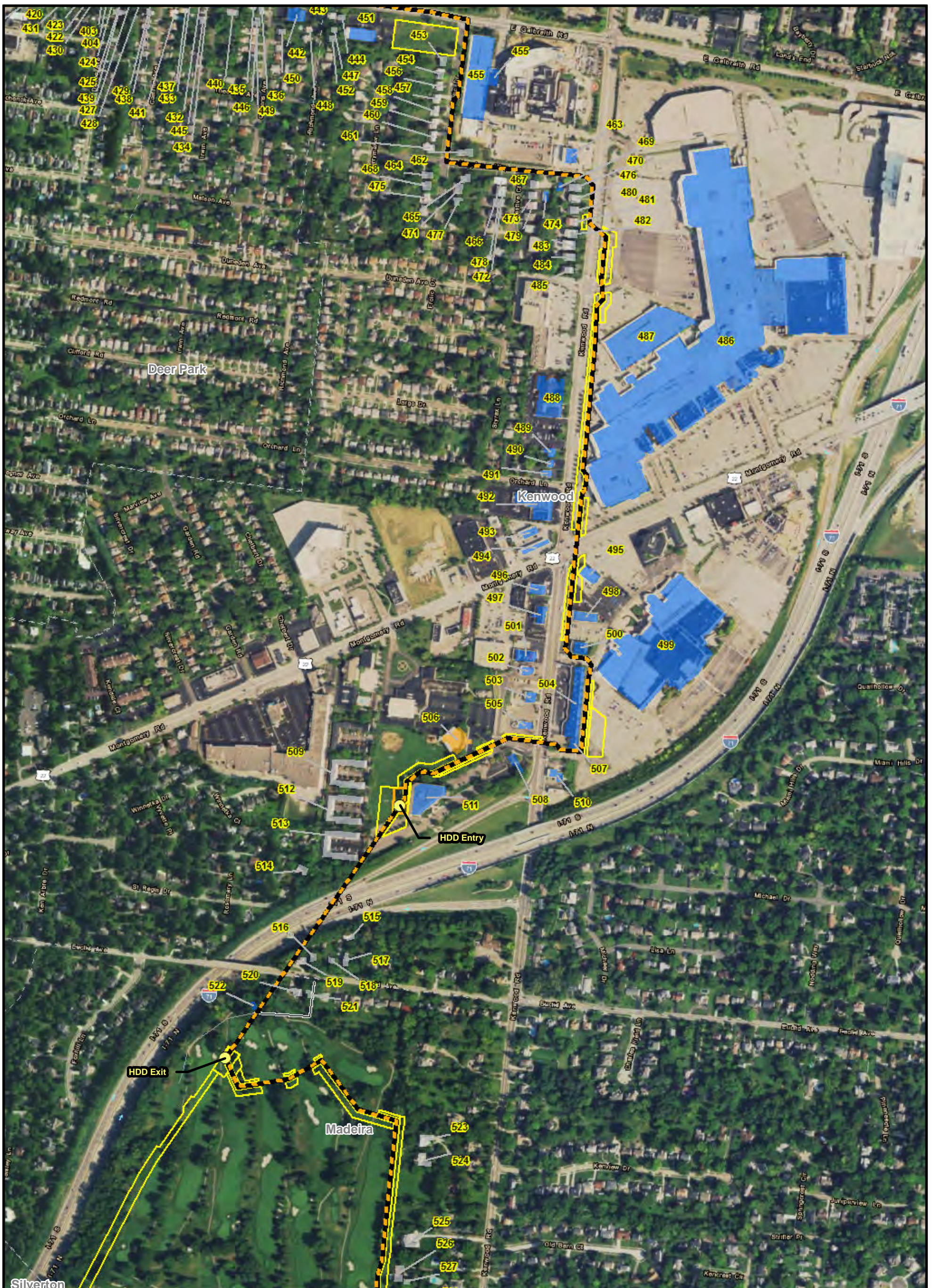
CREATED BY:

REVIEWED BY:





LEGEND: Preferred Route Alternate Route Existing or Future Regulation Station HDD Entry/Exit Municipal Boundary Temporary Workspace Permanent Access Road Temporary Access Road Fenceline Building Footprint Commercial Residential Civic Building Industrial Hospital School		 BASE MAP SOURCE: USGS 7.5-minute Topographic Quadrangle Cincinnati East 1982, Glendale 1982 Madeira 1983, Mason 1982 *The structure data types are based on data from Hamilton County CAGIS files, and where warranted, specific structure types updated based on aerial photography and other sources.	 C314V Central Corridor Pipeline Extension Project FIGURE 7-2E STRUCTURES WITHIN 200 FEET* OF PERMANANT ROW BOUNDARY PN: 672247 CREATED BY: REVIEWED BY:	
---	--	---	---	--



LEGEND:

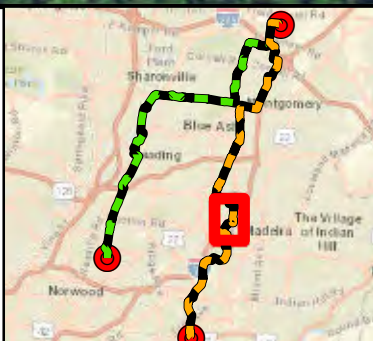
- Preferred Route
- Alternate Route
- Existing or Future Regulation Station
- HDD Entry/Exit
- Municipal Boundary
- Temporary Workspace
- Permanent Access Road
- Temporary Access Road
- Fenceline
- Building Footprint**
- Commercial
- Residential
- Civic Building
- Industrial
- Hospital
- School

0 240 480 960
Scale in Feet



BASE MAP SOURCE:
USGS 7.5-minute Topographic Quadrangle
Cincinnati East 1982, Glendale 1982
Madeira 1983, Mason 1982

*The structure data types are based on data from Hamilton County CAGIS files, and where warranted, specific structure types updated based on aerial photography and other sources.



C314V Central Corridor Pipeline Extension Project

FIGURE 7-2F
STRUCTURES WITHIN 200 FEET*
OF PERMANANT ROW BOUNDARY

PN: 672247
CREATED BY:
REVIEWED BY:





LEGEND:

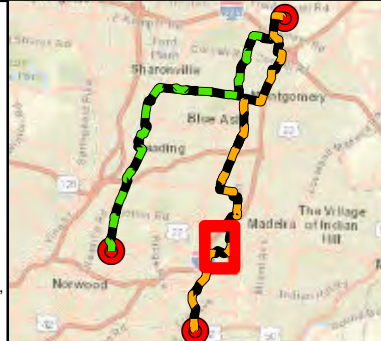
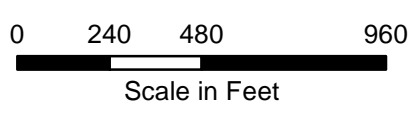
- Preferred Route
- Alternate Route
- Existing or Future Regulation Station
- HDD Entry/Exit
- Municipal Boundary
- Temporary Workspace
- Permanent Access Road
- Temporary Access Road

- Building Footprint**
- Commercial
 - Residential
 - Civic Building
 - Industrial
 - Hospital
 - School



BASE MAP SOURCE:
USGS 7.5-minute Topographic Quadrangle
Cincinnati East 1982, Glendale 1982
Madeira 1983, Mason 1982

*The structure data types are based on data from Hamilton County CAGIS files, and where warranted, specific structure types updated based on aerial photography and other sources.



C314V Central Corridor Pipeline Extension Project

FIGURE 7-2G
STRUCTURES WITHIN 200 FEET*
OF PERMANANT ROW BOUNDARY

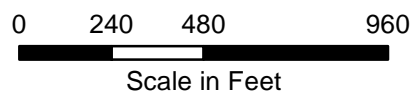
PN: 672247
CREATED BY:
REVIEWED BY:





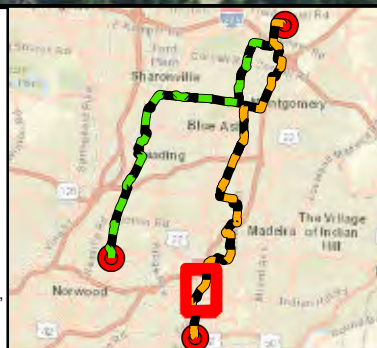
LEGEND:

- Preferred Route
- Alternate Route
- Existing or Future Regulation Station
- HDD Entry/Exit
- Municipal Boundary
- Temporary Workspace
- Permanent Access Road
- Temporary Access Road
- Fenceline
- Building Footprint**
- Commercial
- Residential
- Civic Building
- Industrial
- Hospital
- School



BASE MAP SOURCE:
USGS 7.5-minute Topographic Quadrangle
Cincinnati East 1982, Glendale 1982
Madeira 1983, Mason 1982

*The structure data types are based on data from Hamilton County CAGIS files, and where warranted, specific structure types updated based on aerial photography and other sources.



C314V Central Corridor Pipeline Extension Project

FIGURE 7-2H
STRUCTURES WITHIN 200 FEET*
OF PERMANANT ROW BOUNDARY

PN: 672247

CREATED BY:

REVIEWED BY:





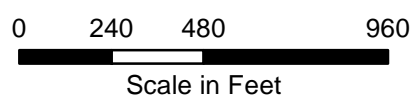
LEGEND: Preferred Route Alternate Route Existing or Future Regulation Station HDD Entry/Exit Municipal Boundary Temporary Workspace Permanent Access Road Temporary Access Road Fenceline Building Footprint Commercial Residential Civic Building Industrial Hospital School		 BASE MAP SOURCE: USGS 7.5-minute Topographic Quadrangle Cincinnati East 1982, Glendale 1982 Madeira 1983, Mason 1982 *The structure data types are based on data from Hamilton County CAGIS files, and where warranted, specific structure types updated based on aerial photography and other sources.	 DUKE ENERGY C314V Central Corridor Pipeline Extension Project FIGURE 7-21 STRUCTURES WITHIN 200 FEET* OF PERMANANT ROW BOUNDARY PN: 672247 CREATED BY: REVIEWED BY:	
---	--	---	--	--



LEGEND:

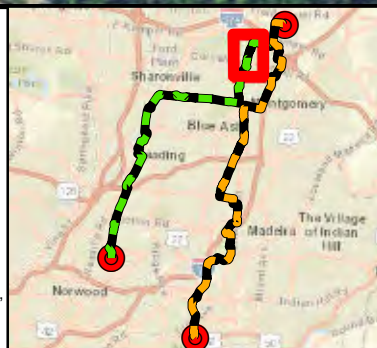
- Preferred Route
- Alternate Route
- Existing or Future Regulation Station
- HDD Entry/Exit
- Municipal Boundary
- Temporary Workspace
- Permanent Access Road
- Temporary Access Road

- Fenceline
- Building Footprint**
- Commercial
- Residential
- Civic Building
- Industrial
- Hospital
- School



BASE MAP SOURCE:
USGS 7.5-minute Topographic Quadrangle
Cincinnati East 1982, Glendale 1982
Madeira 1983, Mason 1982

*The structure data types are based on data from Hamilton County CAGIS files, and where warranted, specific structure types updated based on aerial photography and other sources.



C314V Central
Corridor Pipeline
Extension Project

FIGURE 7-2J
STRUCTURES WITHIN 200 FEET*
OF PERMANANT ROW BOUNDARY

PN: 672247

CREATED BY:

REVIEWED BY:





LEGEND:

- Preferred Route
- Alternate Route
- Existing or Future Regulation Station
- HDD Entry/Exit
- Municipal Boundary
- Temporary Workspace
- Permanent Access Road
- Temporary Access Road
- Fenceline

Building Footprint

- Commercial
- Residential
- Civic Building
- Industrial
- Hospital
- School

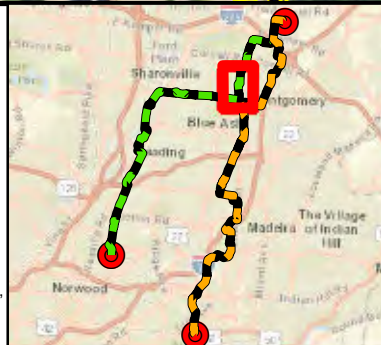
0 240 480 960

Scale in Feet

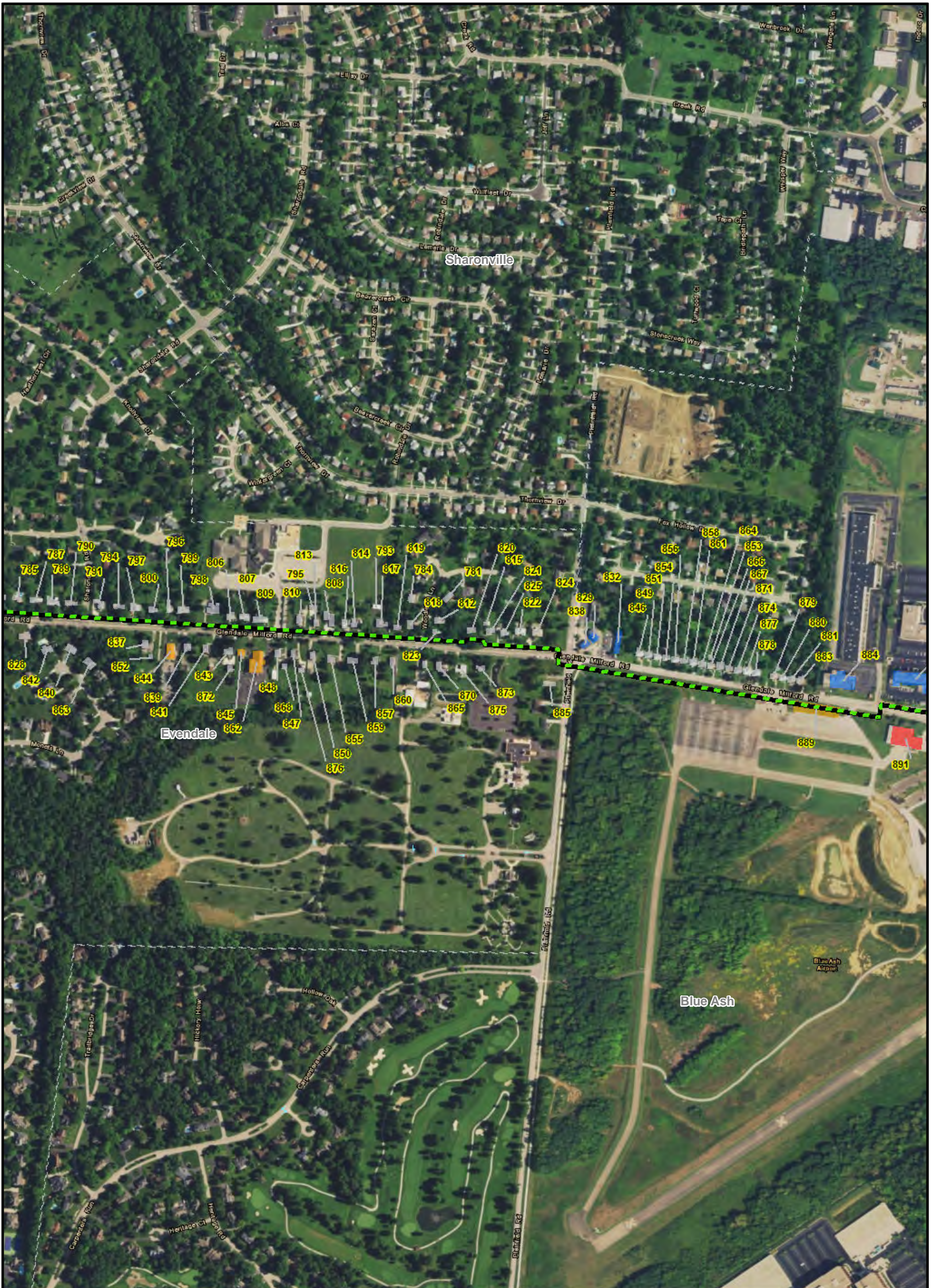
N

BASE MAP SOURCE:
USGS 7.5-minute Topographic Quadrangle
Cincinnati East 1982, Glendale 1982
Madeira 1983, Mason 1982

*The structure data types are based on data from Hamilton County CAGIS files, and where warranted, specific structure types updated based on aerial photography and other sources.



	C314V Central Corridor Pipeline Extension Project
FIGURE 7-2K STRUCTURES WITHIN 200 FEET* OF PERMANENT ROW BOUNDARY	
PN: 672247	
CREATED BY:	
REVIEWED BY:	



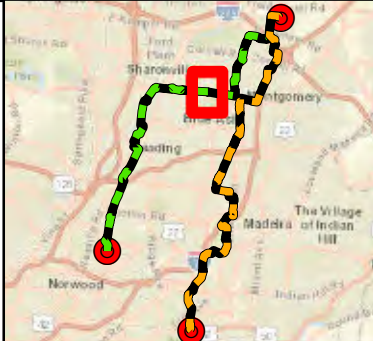
LEGEND:

- Preferred Route
- Alternate Route
- Existing or Future Regulation Station
- HDD Entry/Exit
- Municipal Boundary
- Temporary Workspace
- Permanent Access Road
- Temporary Access Road
- Fenceline
- Building Footprint**
- Commercial
- Residential
- Civic Building
- Industrial
- Hospital
- School



BASE MAP SOURCE:
USGS 7.5-minute Topographic Quadrangle
Cincinnati East 1982, Glendale 1982
Madeira 1983, Mason 1982

*The structure data types are based on data from Hamilton County CAGIS files, and where warranted, specific structure types updated based on aerial photography and other sources.



C314V Central Corridor Pipeline Extension Project

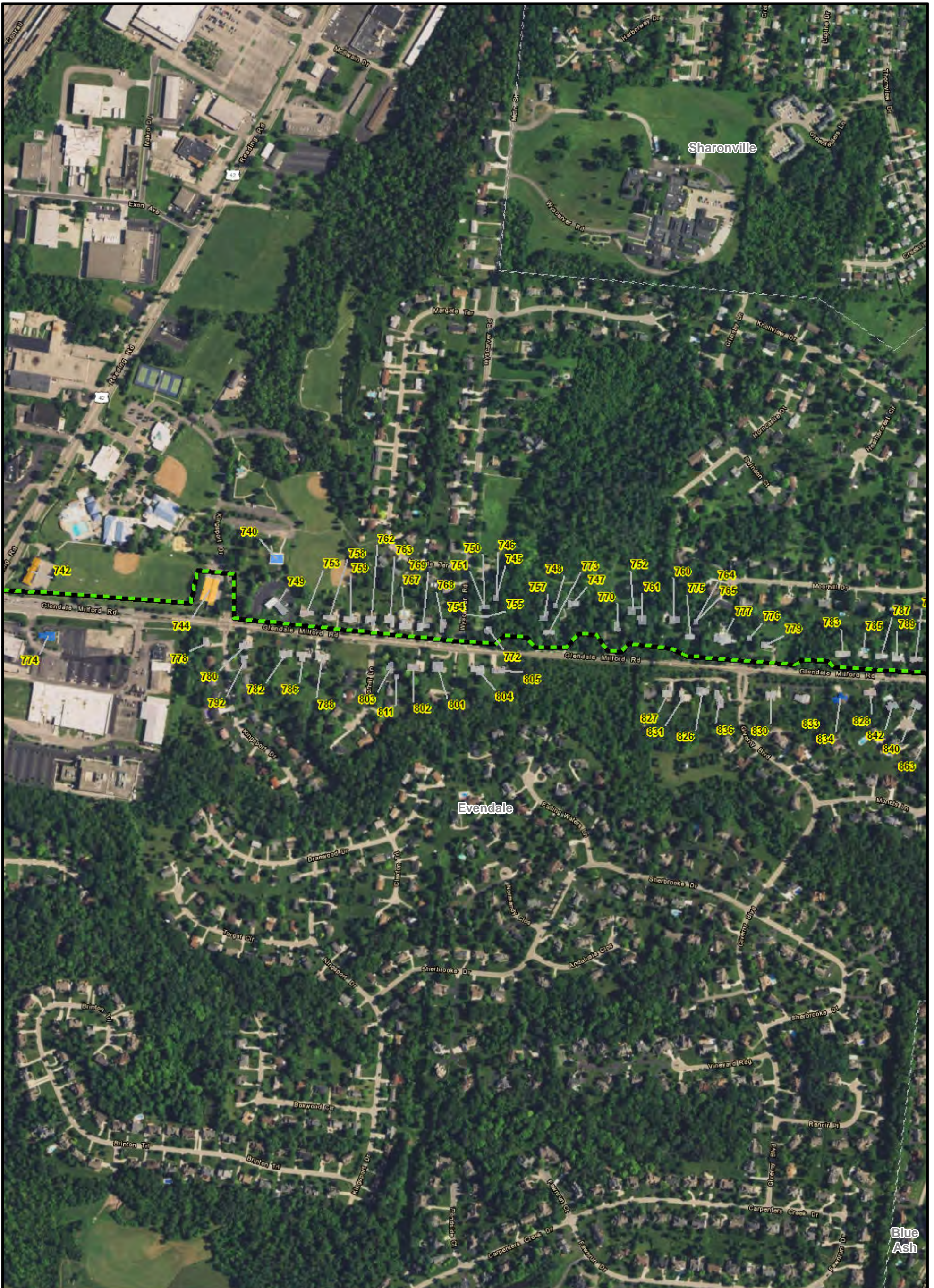
FIGURE 7-2L
STRUCTURES WITHIN 200 FEET*
OF PERMANANT ROW BOUNDARY

PN: 672247

CREATED BY:

REVIEWED BY:





Blue Ash

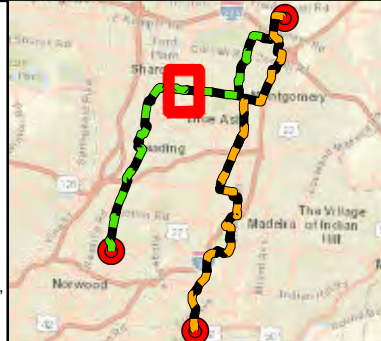
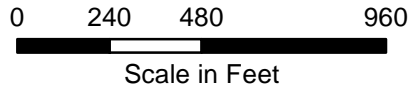
LEGEND:

- Preferred Route
- Alternate Route
- Existing or Future Regulation Station
- HDD Entry/Exit
- Municipal Boundary
- Temporary Workspace
- Permanent Access Road
- Temporary Access Road
- Fenceline
- Building Footprint**
- Commercial
- Residential
- Civic Building
- Industrial
- Hospital
- School



BASE MAP SOURCE:
USGS 7.5-minute Topographic Quadrangle
Cincinnati East 1982, Glendale 1982
Madeira 1983, Mason 1982

*The structure data types are based on data from Hamilton County CAGIS files, and where warranted, specific structure types updated based on aerial photography and other sources.

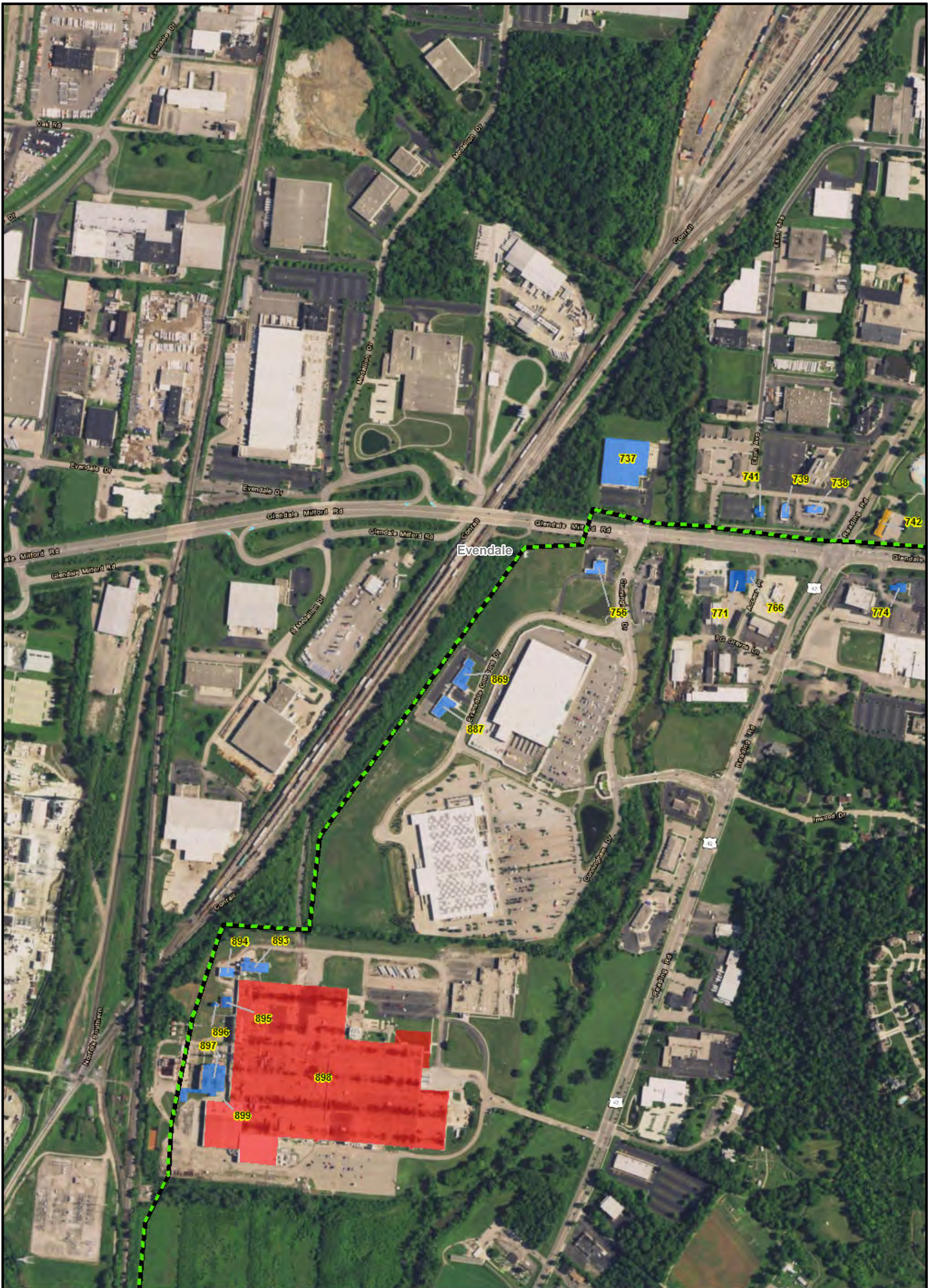


C314V Central Corridor Pipeline Extension Project

FIGURE 7-2M
STRUCTURES WITHIN 200 FEET*
OF PERMANANT ROW BOUNDARY

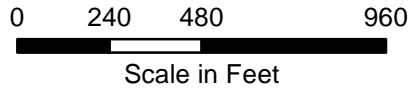
PN: 672247
CREATED BY:
REVIEWED BY:





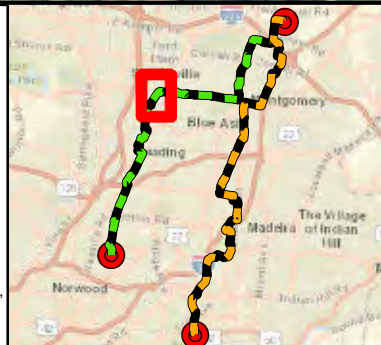
LEGEND:

- Preferred Route
- Alternate Route
- Existing or Future Regulation Station
- HDD Entry/Exit
- Municipal Boundary
- Temporary Workspace
- Permanent Access Road
- Temporary Access Road
- Fenceline
- Building Footprint**
- Commercial
- Residential
- Civic Building
- Industrial
- Hospital
- School



BASE MAP SOURCE:
USGS 7.5-minute Topographic Quadrangle
Cincinnati East 1982, Glendale 1982
Madeira 1983, Mason 1982

*The structure data types are based on data from Hamilton County CAGIS files, and where warranted, specific structure types updated based on aerial photography and other sources.



C314V Central
Corridor Pipeline
Extension Project

FIGURE 7-2N
STRUCTURES WITHIN 200 FEET*
OF PERMANANT ROW BOUNDARY

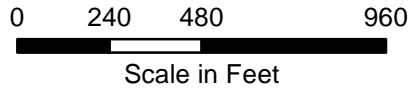
PN: 672247
CREATED BY:
REVIEWED BY:





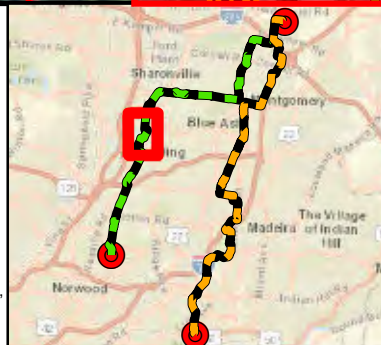
LEGEND:

- Preferred Route
- Alternate Route
- Existing or Future Regulation Station
- HDD Entry/Exit
- Municipal Boundary
- Temporary Workspace
- Permanent Access Road
- Temporary Access Road
- Fenceline
- Building Footprint**
- Commercial
- Residential
- Civic Building
- Industrial
- Hospital
- School



BASE MAP SOURCE:
 USGS 7.5-minute Topographic Quadrangle
 Cincinnati East 1982, Glendale 1982
 Madeira 1983, Mason 1982

*The structure data types are based on data from Hamilton County CAGIS files, and where warranted, specific structure types updated based on aerial photography and other sources.

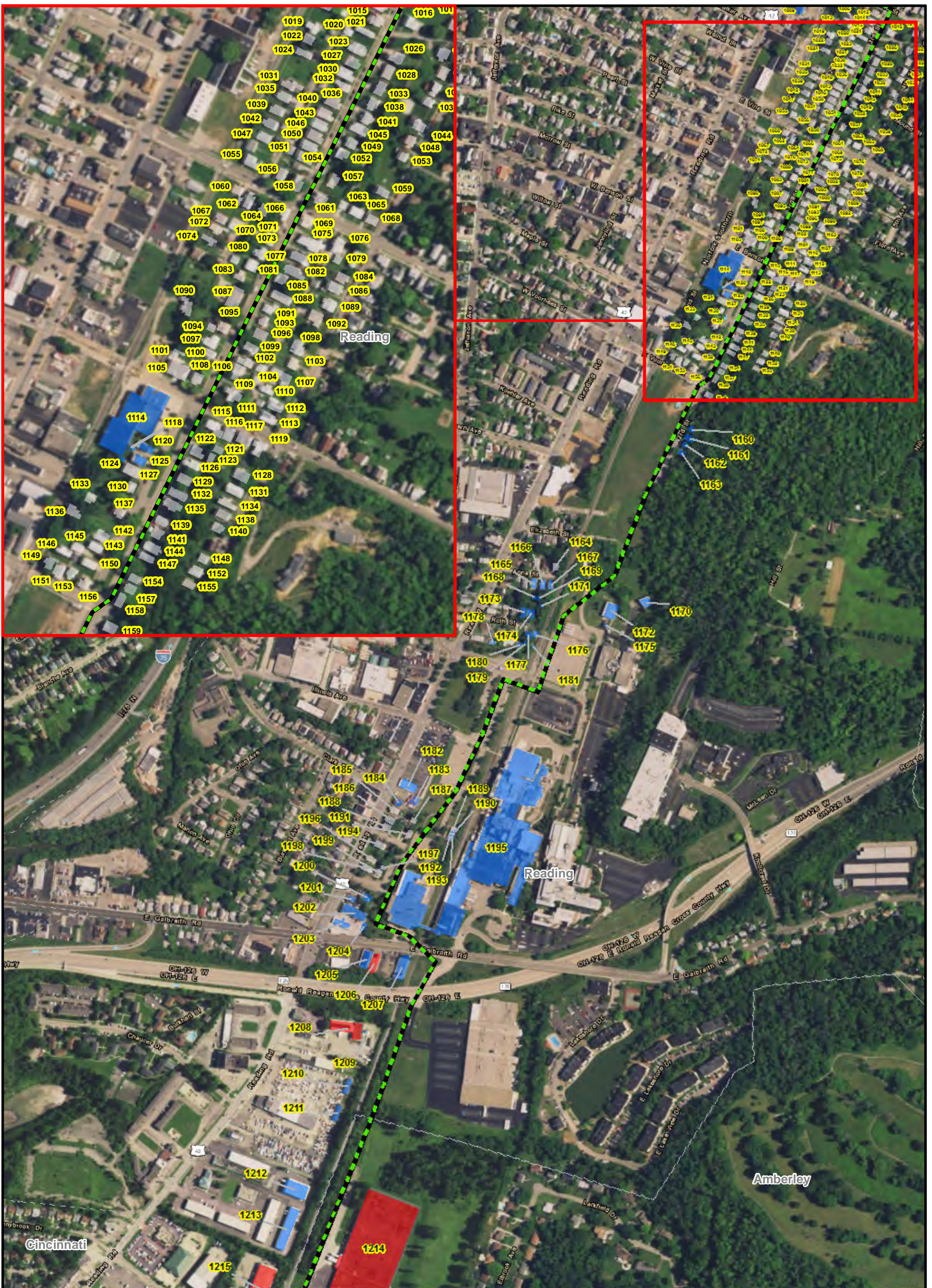


C314V Central Corridor Pipeline Extension Project

FIGURE 7-20
STRUCTURES WITHIN 200 FEET*
OF PERMANANT ROW BOUNDARY

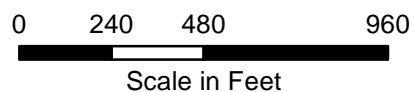
PN: 672247
 CREATED BY:
 REVIEWED BY:





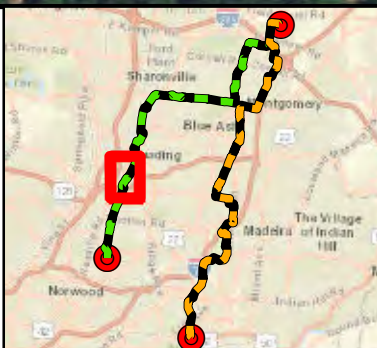
LEGEND:

- Preferred Route
- Alternate Route
- Existing or Future Regulation Station
- HDD Entry/Exit
- Municipal Boundary
- Temporary Workspace
- Permanent Access Road
- Temporary Access Road
- Fenceline
- Building Footprint**
- Commercial
- Residential
- Civic Building
- Industrial
- Hospital
- School



BASE MAP SOURCE:
USGS 7.5-minute Topographic Quadrangle
Cincinnati East 1982, Glendale 1982
Madeira 1983, Mason 1982

*The structure data types are based on data from Hamilton County CAGIS files, and where warranted, specific structure types updated based on aerial photography and other sources.



C314V Central Corridor Pipeline Extension Project

FIGURE 7-2P
STRUCTURES WITHIN 200 FEET*
OF PERMANANT ROW BOUNDARY

PN: 672247

CREATED BY:

REVIEWED BY:





LEGEND: Preferred Route Alternate Route Existing or Future Regulation Station HDD Entry/Exit Municipal Boundary Temporary Workspace Permanent Access Road Temporary Access Road Fenceline Building Footprint Commercial Residential Civic Building Industrial Hospital School		 BASE MAP SOURCE: USGS 7.5-minute Topographic Quadrangle Cincinnati East 1982, Glendale 1982 Madeira 1983, Mason 1982 *The structure data types are based on data from Hamilton County CAGIS files, and where warranted, specific structure types updated based on aerial photography and other sources.		 C314V Central Corridor Pipeline Extension Project
0 240 480 960 Scale in Feet		FIGURE 7-2Q STRUCTURES WITHIN 200 FEET* OF PERMANANT ROW BOUNDARY		
PN: 672247 CREATED BY:		REVIEWED BY:		



LEGEND: Preferred Route Alternate Route Existing or Future Regulation Station HDD Entry/Exit Municipal Boundary Temporary Workspace Permanent Access Road Temporary Access Road Fenceline Building Footprint Commercial Residential Civic Building Industrial Hospital School		 BASE MAP SOURCE: USGS 7.5-minute Topographic Quadrangle Cincinnati East 1982, Glendale 1982 Madeira 1983, Mason 1982 *The structure data types are based on data from Hamilton County CAGIS files, and where warranted, specific structure types updated based on aerial photography and other sources.		 C314V Central Corridor Pipeline Extension Project
0 240 480 960 Scale in Feet		FIGURE 7-2R STRUCTURES WITHIN 200 FEET* OF PERMANANT ROW BOUNDARY		
PN: 672247 CREATED BY:		REVIEWED BY:		