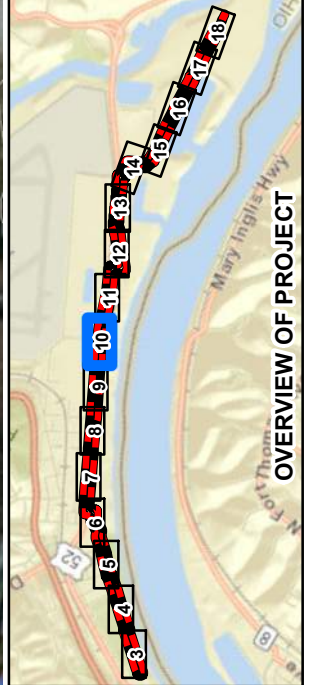


SOURCE: USDA FSA NATIONAL AGRICULTURAL IMAGERY PROGRAM (NAIP) HAMILTON COUNTY MOSAIC. IMAGE DATE: 2015.
 SOURCE: CAGIS 2-FOOT INTERVAL ELEVATION CONTOURS.



- Proposed Replacement Pipeline
- Variable Width Study Corridor
- Proposed Limit-of-Disturbance
- Delineated Wetland**
- Palustrine Emergent (PEM)
- Palustrine Forested (PFO)
- Potential Indiana Bat
- Northern Long-Eared Bat
- Roost Tree
- Potential Running Buffalo Clover Habitat
- Ohio River or Backwater Area
- Existing Culvert
- 2-Foot Contour Interval
- Photograph Location and Direction



NOTES: FULL EXTENT OF STUDY CORRIDOR IS WITHIN 100-YEAR FLOODPLAIN.
 NO STREAMS OR WATERBODIES WERE IDENTIFIED WITHIN THE STUDY CORRIDOR.



Civil & Environmental Consultants, Inc.
 5899 Montclair Boulevard - Cincinnati, OH 45150
 513-985-0226 - 800-759-5614
 www.cecinc.com

DUKE ENERGY
 LINE D000B PIPELINE REPLACEMENT PROJECT
 CINCINNATI, HAMILTON COUNTY, OHIO
 THREATENED AND ENDANGERED SPECIES
 HABITAT ASSESSMENT MAP

DRAWN BY: DMG	CHECKED BY: JAV	APPROVED BY: JAV	FIGURE NO: 10
DATE: OCTOBER 24, 2016	DWG SCALE: 1" = 75'	PROJECT NO: 153-230	



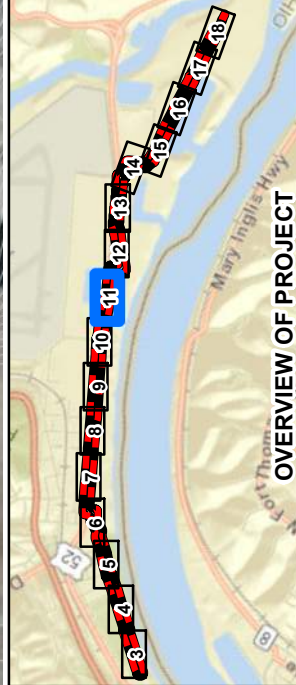


SOURCE: USDA FSA NATIONAL AGRICULTURAL IMAGERY PROGRAM (NAIP) HAMILTON COUNTY MOSAIC. IMAGE DATE: 2015.
 SOURCE: CAGIS 2-FOOT INTERVAL ELEVATION CONTOURS.

Civil & Environmental Consultants, Inc.
 5899 Montclair Boulevard - Cincinnati, OH 45150
 513-985-0226 - 800-759-5614
www.cecinc.com

DUKE ENERGY
 LINE D000B PIPELINE REPLACEMENT PROJECT
 CINCINNATI, HAMILTON COUNTY, OHIO

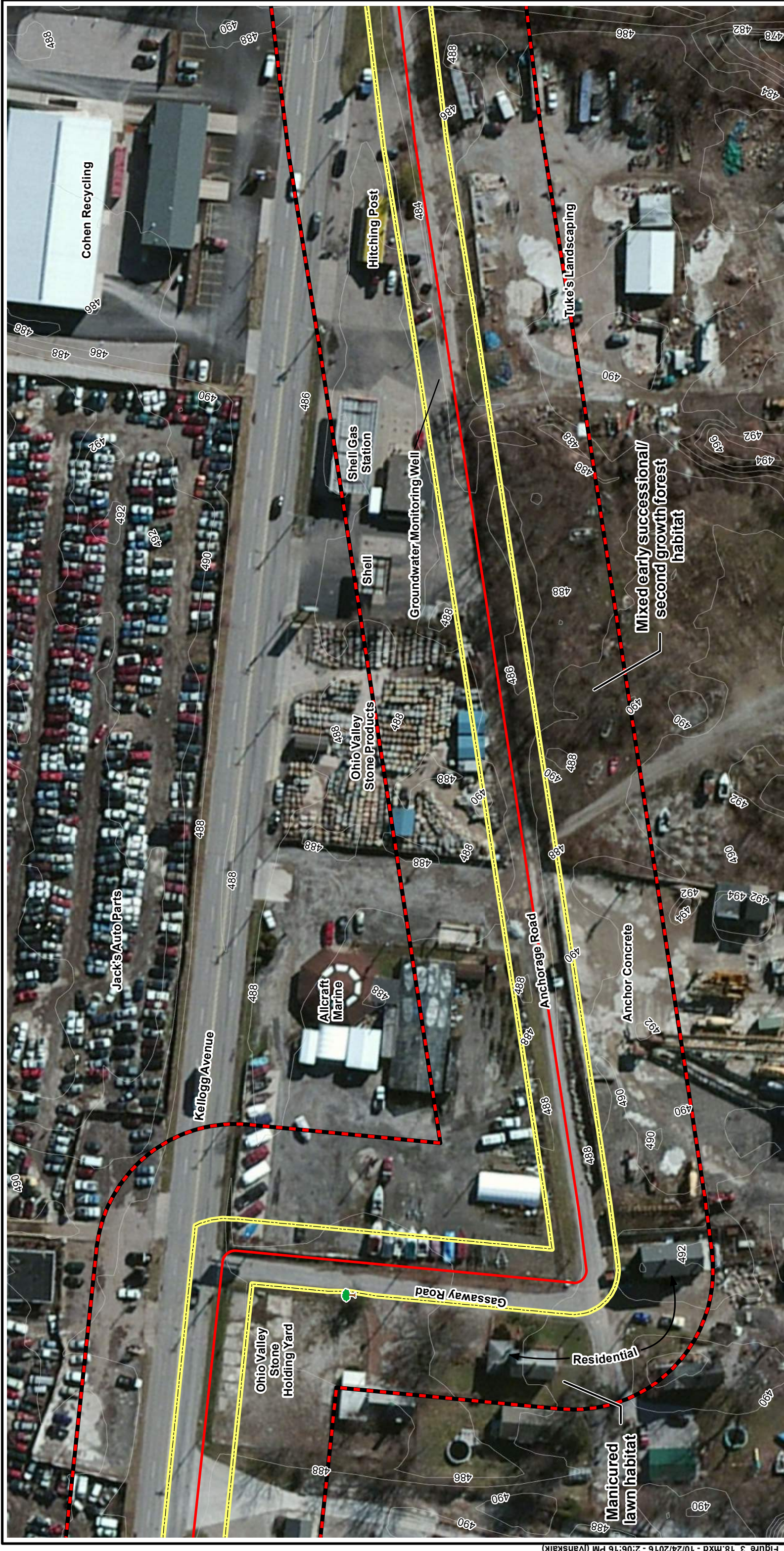
THREATENED AND ENDANGERED SPECIES
 HABITAT ASSESSMENT MAP




- Proposed Replacement Pipeline
- Variable Width Study Corridor
- Proposed Limit-of-Disturbance
- Delineated Wetland
- Palustrine Emergent (PEM)
- Palustrine Forested (PFO)
- Potential Indiana Bat
- Northern Long-Eared Bat
- Roost Tree
- Potential Running Buffalo Clover Habitat
- Ohio River or Backwater Area
- Existing Culvert
- 2-Foot Contour Interval
- Photograph Location and Direction

DRAWN BY: DMG | CHECKED BY: JAV | APPROVED BY: JAV | FIGURE NO: 11
 DATE: OCTOBER 24, 2016 | DWG SCALE: 1" = 75' | PROJECT NO: 153-230

NOTES: FULL EXTENT OF STUDY CORRIDOR IS WITHIN 100-YEAR FLOODPLAIN.
 NO STREAMS OR WATERBODIES WERE IDENTIFIED WITHIN THE STUDY CORRIDOR.



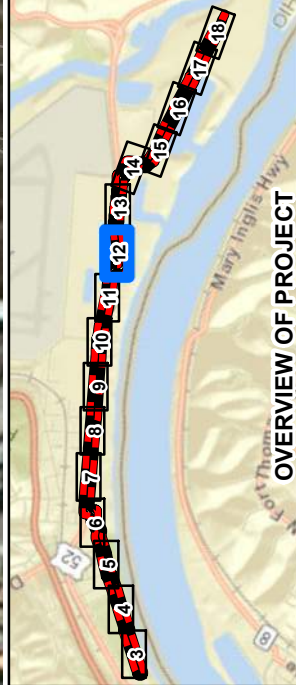
SOURCE: USDA FSA NATIONAL AGRICULTURAL IMAGERY PROGRAM (NAIP) HAMILTON COUNTY MOSAIC. IMAGE DATE: 2015.
 SOURCE: CAGIS 2-FOOT INTERVAL ELEVATION CONTOURS.



Civil & Environmental Consultants, Inc.
 5899 Montclair Boulevard - Cincinnati, OH 45150
 513-985-0226 - 800-759-5614
www.cecinc.com

DUKE ENERGY
 LINE D000B PIPELINE REPLACEMENT PROJECT
 CINCINNATI, HAMILTON COUNTY, OHIO

THREATENED AND ENDANGERED SPECIES
 HABITAT ASSESSMENT MAP




Legend:


- Proposed Replacement Pipeline
- Variable Width Study Corridor
- Proposed Limit-of-Disturbance
- Delineated Wetland
- Palustrine Emergent (PEM)
- Palustrine Forested (PFO)
- Potential Indiana Bat
- Northern Long-Eared Bat
- Roost Tree

- Potential Running Buffalo Clover Habitat
- Ohio River or Backwater Area
- Existing Culvert
- 2-Foot Contour Interval
- ↗ Photograph Location and Direction

NORTH

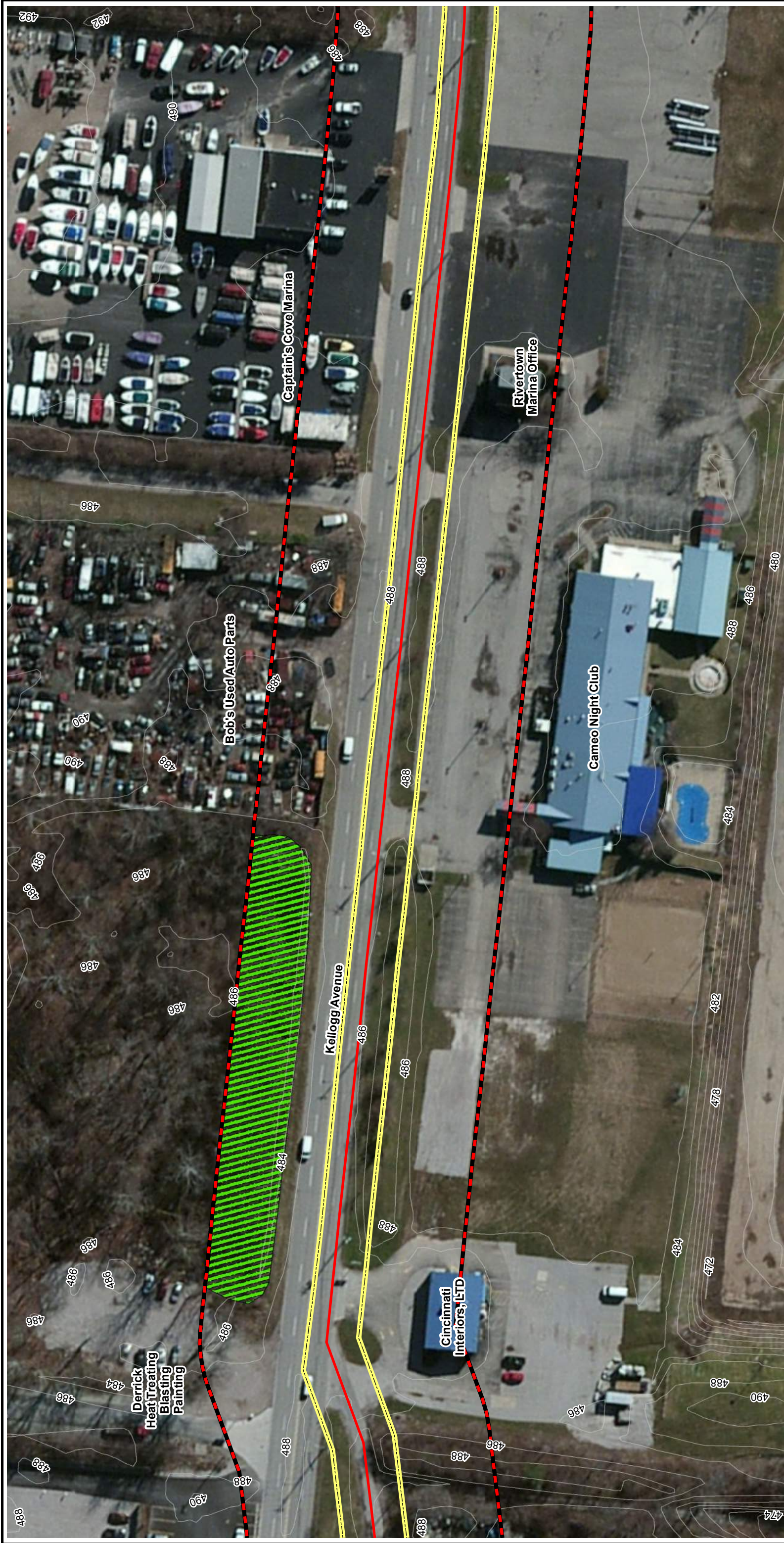


0 75 150 Feet

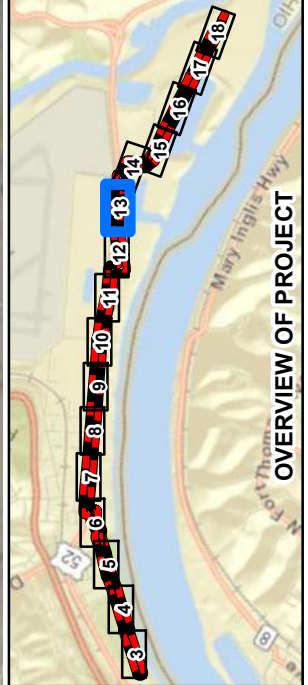


DRAWN BY: DMG | CHECKED BY: JAV | APPROVED BY: JAV | FIGURE NO: 12
 DATE: OCTOBER 24, 2016 | DWG SCALE: 1" = 75' | PROJECT NO: 153-230

NOTES: FULL EXTENT OF STUDY CORRIDOR IS WITHIN 100-YEAR FLOODPLAIN.
 NO STREAMS OR WATERBODIES WERE IDENTIFIED WITHIN THE STUDY CORRIDOR.



SOURCE: USDA FSA NATIONAL AGRICULTURAL IMAGERY PROGRAM (NAIP) HAMILTON COUNTY MOSAIC. IMAGE DATE: 2015.
 SOURCE: CAGIS 2-FOOT INTERVAL ELEVATION CONTOURS.



- Proposed Replacement Pipeline
- Variable Width Study Corridor
- Proposed Limit-of-Disturbance
- Delineated Wetland**
 - Palustrine Emergent (PEM)
 - Palustrine Forested (PFO)
 - Potential Indiana Bat
 - Northern Long-Eared Bat
 - Roost Tree
- Potential Running Buffalo Clover Habitat
- Ohio River or Backwater Area
- Existing Culvert
- 2-Foot Contour Interval
- Photograph Location and Direction



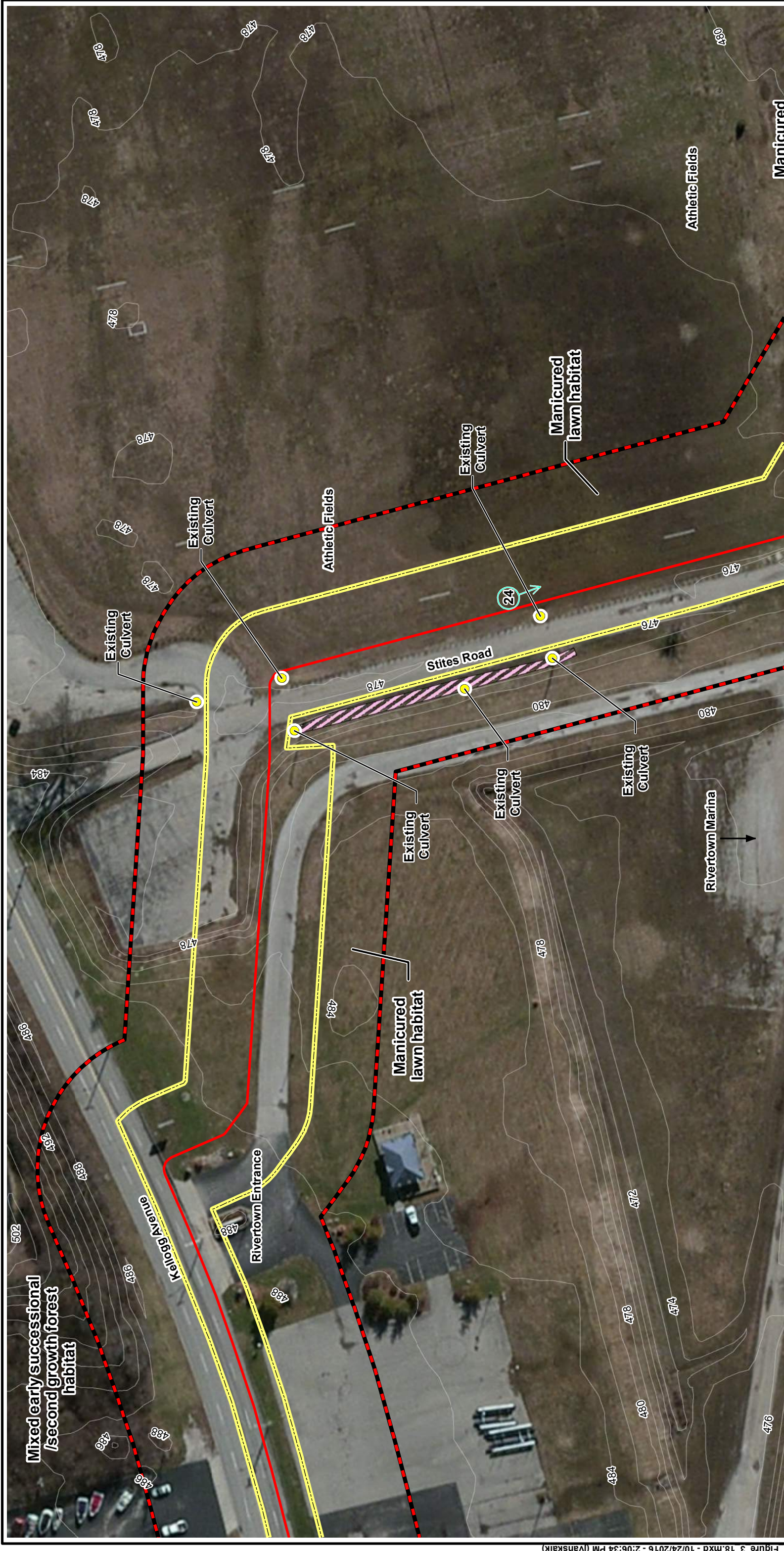
NOTES: FULL EXTENT OF STUDY CORRIDOR IS WITHIN 100-YEAR FLOODPLAIN.
 NO STREAMS OR WATERBODIES WERE IDENTIFIED WITHIN THE STUDY CORRIDOR.



Civil & Environmental Consultants, Inc.
 5899 Montclair Boulevard - Cincinnati, OH 45150
 513-985-0226 - 800-759-5614
 www.cecinc.com

DUKE ENERGY
 LINE D000B PIPELINE REPLACEMENT PROJECT
 CINCINNATI, HAMILTON COUNTY, OHIO
 THREATENED AND ENDANGERED SPECIES
 HABITAT ASSESSMENT MAP

DRAWN BY: DMG | CHECKED BY: JAV* | APPROVED BY: JAV* | FIGURE NO: 13
 DATE: OCTOBER 24, 2016 | DWG SCALE: 1" = 75' | PROJECT NO: 153-230



Legend

- Proposed Replacement Pipeline
- Variable Width Study Corridor
- Proposed Limit-of-Disturbance
- Delineated Wetland**
 - Palustrine Emergent (PEM)
 - Palustrine Forested (PFO)
 - Potential Indiana Bat
 - Northern Long-Eared Bat
 - Roost Tree
- Potential Running Buffalo
- Clover Habitat
- Ohio River or Backwater Area
- Existing Culvert
- 2-Foot Contour Interval
- Photograph Location and Direction

North Arrow

Scale: 0, 75, 150 Feet

Overview Map: OVERVIEW OF PROJECT showing the study corridor along the Ohio River with numbered segments 1-19.

Source: USDA FSA NATIONAL AGRICULTURAL IMAGERY PROGRAM (NAIP) HAMILTON COUNTY MOSAIC. IMAGE DATE: 2015.
SOURCE: CAGIS 2-FOOT INTERVAL ELEVATION CONTOURS.

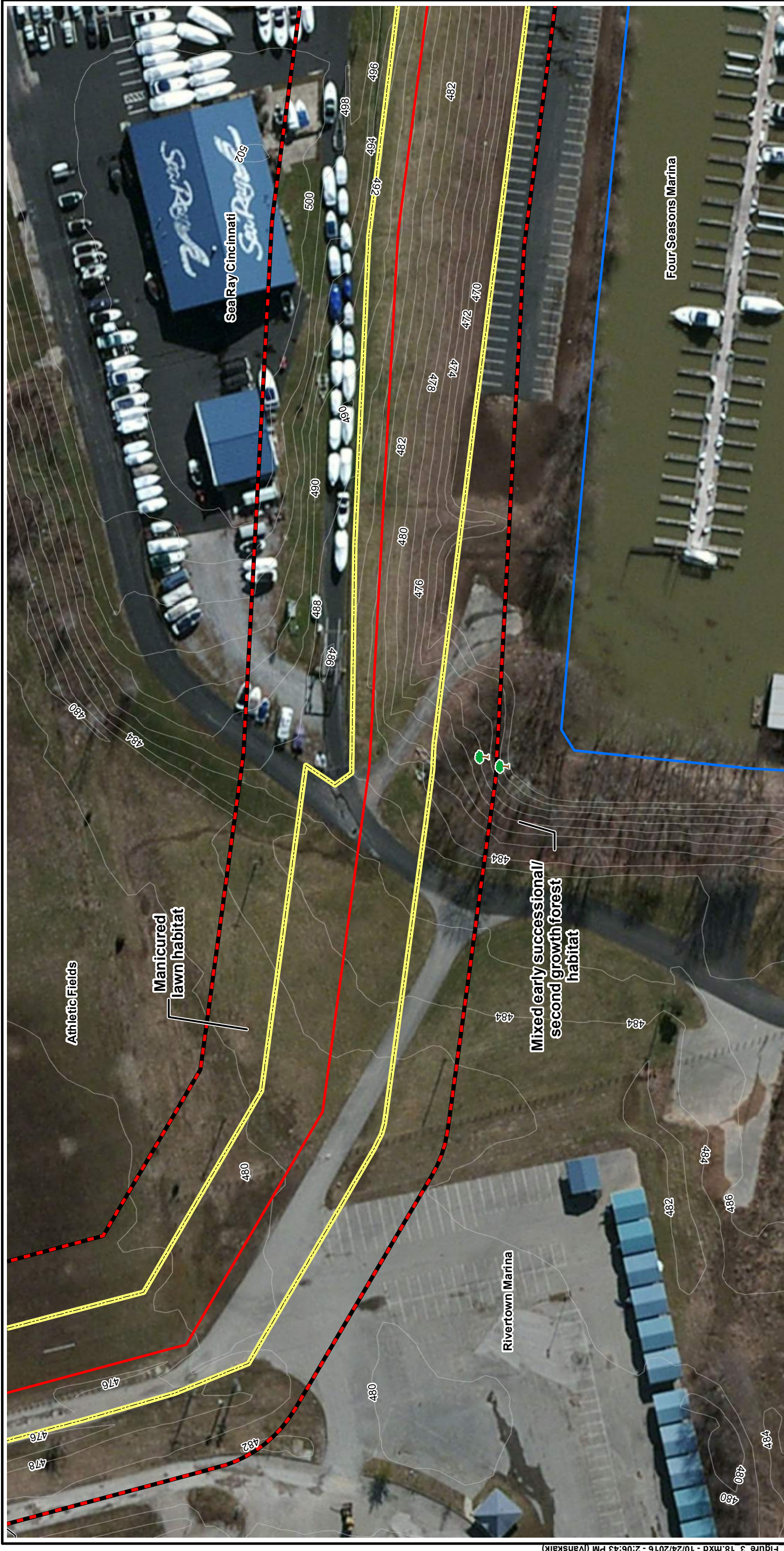
DUKE ENERGY
LINE D000B PIPELINE REPLACEMENT PROJECT
CINCINNATI, HAMILTON COUNTY, OHIO

Civil & Environmental Consultants, Inc.
5899 Montclair Boulevard - Cincinnati, OH 45150
513-985-0226 - 800-759-5614
www.cecinc.com

THREATENED AND ENDANGERED SPECIES HABITAT ASSESSMENT MAP

DRAWN BY: DMG | CHECKED BY: JAV | APPROVED BY: JAV | FIGURE NO: 14
DATE: OCTOBER 24, 2016 | DWG SCALE: 1" = 75' | PROJECT NO: 153-230

NOTES: FULL EXTENT OF STUDY CORRIDOR IS WITHIN 100-YEAR FLOODPLAIN. NO STREAMS OR WATERBODIES WERE IDENTIFIED WITHIN THE STUDY CORRIDOR.



SOURCE: USDA FSA NATIONAL AGRICULTURAL IMAGERY PROGRAM (NAIP) HAMILTON COUNTY MOSAIC. IMAGE DATE: 2015.
 SOURCE: CAGIS 2-FOOT INTERVAL ELEVATION CONTOURS.

Civil & Environmental Consultants, Inc.
 5899 Montclair Boulevard - Cincinnati, OH 45150
 513-985-0226 - 800-759-5614
www.cecinc.com

DUKE ENERGY
 LINE D000B PIPELINE REPLACEMENT PROJECT
 CINCINNATI, HAMILTON COUNTY, OHIO

THREATENED AND ENDANGERED SPECIES
 HABITAT ASSESSMENT MAP

DRAWN BY: DMG | CHECKED BY: JAV | APPROVED BY: JAV

DATE: OCTOBER 24, 2016 | DWG SCALE: 1" = 75' | PROJECT NO: 153-230

FIGURE NO: 15

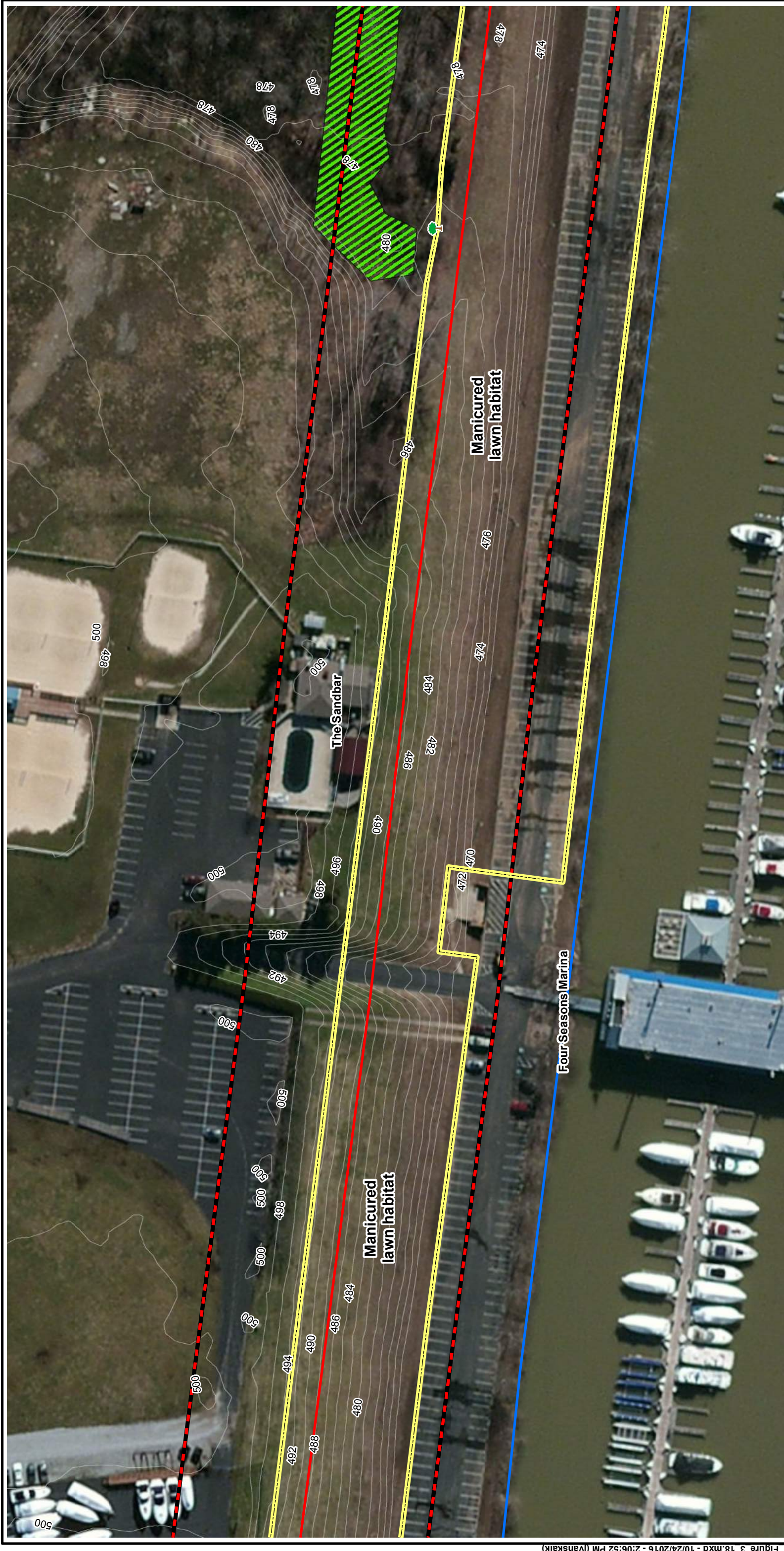
NOTES: FULL EXTENT OF STUDY CORRIDOR IS WITHIN 100-YEAR FLOODPLAIN.
 NO STREAMS OR WATERBODIES WERE IDENTIFIED WITHIN THE STUDY CORRIDOR.

OVERVIEW OF PROJECT

0 75 150 Feet

Legend:

- Proposed Replacement Pipeline
- Variable Width Study Corridor
- Proposed Limit-of-Disturbance
- Delineated Wetland**
 - Palustrine Emergent (PEM)
 - Palustrine Forested (PFO)
 - Potential Indiana Bat
 - Northern Long-Eared Bat
 - Roost Tree
- Potential Running Buffalo
- Clover Habitat
- Ohio River or Backwater Area
- Existing Culvert
- 2-Foot Contour Interval
- Photograph Location and Direction



SOURCE: USDA FSA NATIONAL AGRICULTURAL IMAGERY PROGRAM (NAIP) HAMILTON COUNTY MOSAIC. IMAGE DATE: 2015.
 SOURCE: CAGIS 2-FOOT INTERVAL ELEVATION CONTOURS.

Civil & Environmental Consultants, Inc.
 5899 Montclair Boulevard - Cincinnati, OH 45150
 513-985-0226 - 800-759-5614
 www.cecinc.com

DUKE ENERGY
 LINE D000B PIPELINE REPLACEMENT PROJECT
 CINCINNATI, HAMILTON COUNTY, OHIO

THREATENED AND ENDANGERED SPECIES
 HABITAT ASSESSMENT MAP

DRAWN BY: DMG | CHECKED BY: JAV | APPROVED BY: JAV

DATE: OCTOBER 24, 2016 | DWG SCALE: 1" = 75' | PROJECT NO: 153-230

FIGURE NO: 16

NOTES: FULL EXTENT OF STUDY CORRIDOR IS WITHIN 100-YEAR FLOODPLAIN.
 NO STREAMS OR WATERBODIES WERE IDENTIFIED WITHIN THE STUDY CORRIDOR.

Legend:


- Proposed Replacement Pipeline
- Variable Width Study Corridor
- Proposed Limit-of-Disturbance
- Delineated Wetland**
 - Palustrine Emergent (PEM)
 - Palustrine Forested (PFO)
 - Potential Indiana Bat
 - Northern Long-Eared Bat
 - Roost Tree
- Potential Running Buffalo Clover Habitat
- Ohio River or Backwater Area
- Existing Culvert
- 2-Foot Contour Interval
- Photograph Location and Direction

OVERVIEW OF PROJECT

Scale: 0 75 150 Feet



SOURCE: USDA FSA NATIONAL AGRICULTURAL IMAGERY PROGRAM (NAIP) HAMILTON COUNTY MOSAIC. IMAGE DATE: 2015.
 SOURCE: CAGIS 2-FOOT INTERVAL ELEVATION CONTOURS.

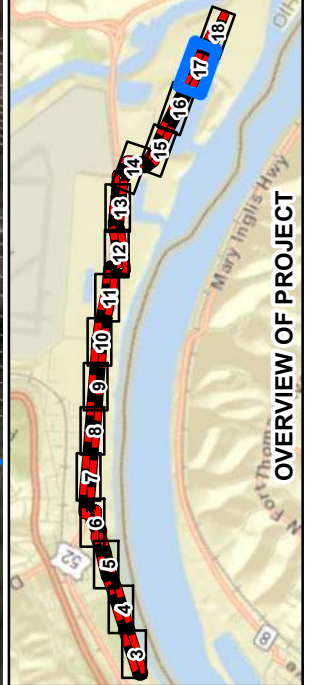


Civil & Environmental Consultants, Inc.
 5899 Montclair Boulevard - Cincinnati, OH 45150
 513-985-0226 - 800-759-5614
www.cecinc.com

DUKE ENERGY
 LINE D000B PIPELINE REPLACEMENT PROJECT
 CINCINNATI, HAMILTON COUNTY, OHIO

THREATENED AND ENDANGERED SPECIES
 HABITAT ASSESSMENT MAP


DRAWN BY: DMG | CHECKED BY: JAV | APPROVED BY: JAV | FIGURE NO: 17
 DATE: OCTOBER 24, 2016 | DWG SCALE: 1" = 75' | PROJECT NO: 153-230



NOTES: FULL EXTENT OF STUDY CORRIDOR IS WITHIN 100-YEAR FLOODPLAIN.
 NO STREAMS OR WATERBODIES WERE IDENTIFIED WITHIN THE STUDY CORRIDOR.



SOURCE: USDA FSA NATIONAL AGRICULTURAL IMAGERY PROGRAM (NAIP) HAMILTON COUNTY MOSAIC. IMAGE DATE: 2015.
 SOURCE: CAGIS 2-FOOT INTERVAL ELEVATION CONTOURS.

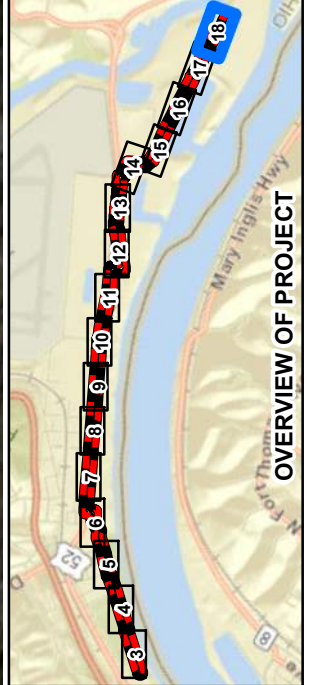


Civil & Environmental Consultants, Inc.
 5899 Montclair Boulevard - Cincinnati, OH 45150
 513-985-0226 - 800-759-5614
www.cecinc.com

DUKE ENERGY
 LINE D000B PIPELINE REPLACEMENT PROJECT
 CINCINNATI, HAMILTON COUNTY, OHIO

THREATENED AND ENDANGERED SPECIES
 HABITAT ASSESSMENT MAP

DRAWN BY: DMG | CHECKED BY: JAV | APPROVED BY: JAV | FIGURE NO: 18
 DATE: OCTOBER 24, 2016 | DWG SCALE: 1" = 75' | PROJECT NO: 153-230



Legend

- Proposed Replacement Pipeline
- Variable Width Study Corridor
- Proposed Limit-of-Disturbance
- Delineated Wetland**
- Palustrine Emergent (PEM)
- Palustrine Forested (PFO)
- Potential Indiana Bat
- Northern Long-Eared Bat
- Roost Tree

- Potential Running Buffalo Clover Habitat
- Ohio River or Backwater Area
- Existing Culvert
- 2-Foot Contour Interval
- Photograph Location and Direction

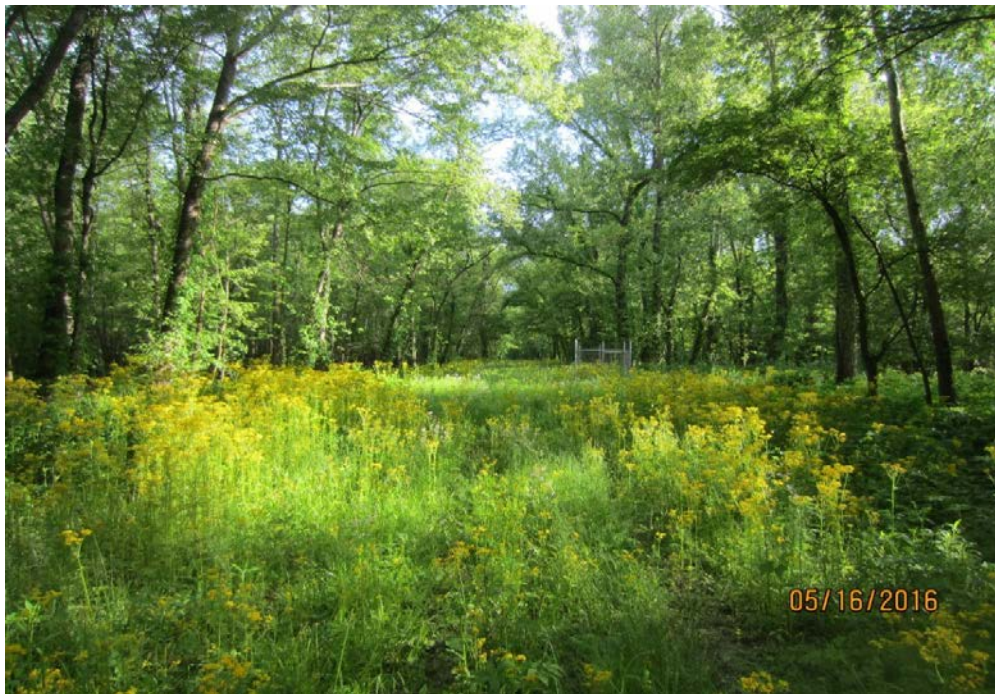
NORTH

NOTES: FULL EXTENT OF STUDY CORRIDOR IS WITHIN 100-YEAR FLOODPLAIN.
 NO STREAMS OR WATERBODIES WERE IDENTIFIED WITHIN THE STUDY CORRIDOR.

ATTACHMENT A
SITE PHOTOGRAPHS



Photograph 1. View of the maintained Line D000B ROW, south of proposed southern terminus of Project. Photograph taken facing south-southeast.



Photograph 2. View of existing Line D000B ROW at the southern terminus of study corridor. Photograph taken facing south.

Line D000B Pipeline Replacement Project
Cincinnati, Hamilton County, Ohio
CEC Project 153-230
Photographed on May 16, 18 and 19, 2016



Photograph 3. Representative view of emergent wetland habitat.
Photograph taken facing north-northwest along existing, maintained Line D000B ROW.



Photograph 4. Representative view of the forested wetland habitat along the west side of the existing Line D000B ROW near the southern terminus of the Project.
Photograph taken facing south-southwest.

Line D000B Pipeline Replacement Project
Cincinnati, Hamilton County, Ohio
CEC Project 153-230
Photographed on May 16, 18 and 19, 2016



Photograph 5. Fowler toad (*Anaxyrus fowleri*) from the forested wetland habitat near the southern terminus of the Project.



Photograph 6. View of the forested wetland habitat along the west side of the existing Line D000B ROW near the southern terminus of the Project.
Photograph taken facing west.

Line D000B Pipeline Replacement Project
Cincinnati, Hamilton County, Ohio
CEC Project 153-230
Photographed on May 16, 18 and 19, 2016



Photograph 7. Representative view of elevated and maintained ROW near the southern terminus of the Project. Photograph taken facing south.

Line D000B Pipeline Replacement Project
Cincinnati, Hamilton County, Ohio
CEC Project 153-230
Photographed on May 16, 18 and 19, 2016



Photograph 8. View of PRT-8.



Photograph 9. View of PRT-9

Line D000B Pipeline Replacement Project
Cincinnati, Hamilton County, Ohio
CEC Project 153-230
Photographed on May 16, 18 and 19, 2016