



# Powell Creek Solar

## Amendment Exhibit A

### Post-Application Project Modifications

**Case No. 22-0915-EL-BGA**

# Post-Application Project Modifications

## Powell Creek Solar

Putnam County, Ohio

Case Number 22-0915-EL-BGA

Prepared for:



Powell Creek Solar, LLC  
a subsidiary of Avangrid Renewables, Inc.  
2701 NW Vaughn St, Suite 300  
Portland, OR 97210

Prepared by:



Environmental Design & Research, D.P.C.  
5 E Long St, Suite 700  
Columbus, OH 43215  
[www.edrdpc.com](http://www.edrdpc.com)

October 2022

# TABLE OF CONTENTS

Introduction.....	1
Summary of Modifications .....	1
Impact Analysis .....	3
Wetlands and Streams .....	3
Vegetation and Habitat.....	3
Land Use.....	3
Distance Analysis .....	6
Structures and Property Lines within 1,500 Feet of Solar Arrays.....	6
Structures and Property Lines within 250 Feet of Facility Components .....	34
Access Driveway Locations .....	53

## LIST OF TABLES

Table 1. Comparison of Layouts for Each Facility Component (ATI layout) .....	2
Table 2. Comparison of Layouts for Each Facility Component (STI-PVH layout).....	2
Table 3. Impact Assumptions.....	4
Table 4. Land Use Impacts (ATI layout).....	4
Table 5. Land Use Impacts (STI-PVH layout) .....	5
Table 6. Structures Within 1,500 Feet of a Solar Array (ATI layout) .....	6
Table 7. Structures Within 1,500 Feet of a Solar Array (STI-PVH layout) .....	9
Table 8. Parcels Within 1,500 Feet of a PV Panel (ATI layout) .....	12
Table 9. Parcels Within 1,500 Feet of a PV Panel (STI-PVH layout) .....	23
Table 10. Structures within 250 Feet of Facility Components (ATI layout) .....	35
Table 11. Structures within 250 Feet of Facility Components (STI-PVH layout).....	35
Table 12. Property Lines within 250 Feet of Facility Components (ATI layout).....	36
Table 13. Property Lines within 250 Feet of Facility Components (STI-PVH layout) .....	45
Table 14. Comparison of Access Points/Driveways .....	54

## LIST OF FIGURES

Figure 1. Initial Application Layout Components

Figure 2. ATI Layout Components

Figure 3. STI-PVH Layout Components

Figure 4. Solar Arrays

Figure 5. Access Roads

Figure 6. Inverters, Collection Lines, and Substations

Figure 7. Fencelines, O&M Building, and Laydown Yards

Figure 8. Transmission Line, Berms, Culverts, and BMP Ponds

Figure 9. Delineated Features and Access Roads

Figure 10. Delineated Features and Collection Lines

## INTRODUCTION

Powell Creek Solar, LLC (Applicant) is requesting to modify its Certificate to allow for two additional, alternative Project layouts for the Powell Creek Solar Project (Project or Facility). The first design uses Array Technologies, Inc. DuraTrack HZ v3 trackers (ATI layout), and the second design uses a combination of STi norland H1250 and PVH Axone Duo trackers (STI-PVH layout). These layouts are referred to collectively as the alternative layouts. The Facility layout as presented in the Certificate Application (case number 20-1084-EL-BGN) is referred to in this report as the Initial Application layout. This report summarizes the alternative layouts and how they compare with the Initial Application layout. This report also compares and discusses the impacts of the alternative layouts with the impacts of the Initial Application layout.

## SUMMARY OF MODIFICATIONS

Modifications have been made to the Initial Application layout to optimize the site plan for constructability and energy production, while reducing environmental impacts. These modifications are illustrated in the attached figures. Figure 1 shows the overall Initial Application layout, Figure 2 shows the ATI layout, and Figure 3 shows the STI-PVH layout. Figure 4 compares the footprints of the solar arrays between the Initial Application layout and the alternative layouts. The overall footprint has been reduced in both alternative layouts.

Figure 5 compares the access roads between the Initial Application layout and the alternative layouts. The total length of access roads has been reduced in both alternative layouts compared to the Initial Application layout. For more information, see the Access Driveway Locations discussion of this report.

Figure 6 compares the inverters, collection lines, and collection substation between the Initial Application layout and the alternative layouts. The overall length of collection lines in the alternative layouts has decreased compared to the Initial Application layout. Additionally, both alternative layouts have decreased the number of inverters.

Figure 7 compares the fencelines, operations and maintenance (O&M) building, and laydown yards between the Initial Application layout and the alternative layouts. The area within the fenceline has been reduced throughout the Project Area. The O&M building footprint has increased slightly. Both alternative layouts show an increase in laydown yard acreage, incorporating several smaller laydown yards scattered throughout the Project Area. The Initial Application layout impacts as reported in this analysis only include the two larger laydown yards that were a part of the original Certificate Application submittal. However, as noted in the Amendment Application, the Applicant is proposing to use this increased number of laydown

yards in the Initial Application layout, in substantially similar locations to those shown in the alternative layouts.

Figure 8 compares the transmission line, berms, culverts, and erosion control best management practice (BMP) ponds between the Initial Application layout and the alternative layouts. The transmission line has been adjusted slightly in the alternative layouts but remains in a similar location as the Initial Application layout. The berms, culverts, and BMP ponds added to the alternative layouts are similar in both the ATI and STI-PVH layouts, with only slight variations between the two.

Table 1 and Table 2 compare the total dimensions of Facility components between the Initial Application layout and the alternative layouts. As shown in the tables, most components have been reduced in quantity and/or overall size.

**Table 1. Comparison of Layouts for Each Facility Component (ATI layout)**

Layout Version	Solar Array (Acres)	Access Roads (Feet)	Inverters (Quantity)	Underground Collection Lines (Feet)	Overhead Transmission Line (Feet)	Collection Substation (Acres)	POI Substation (Acres)	Area Within Fenceline (Acres)	O&M Building (Acres)	Laydown Yard (Acres)
Initial Application layout	888	39,436	32	69,248	8,392	1.4	1.4	982	5.1	9.8
ATI layout	714	38,138	27	66,556	8,502	1.1	1.2	824	5.6	22.6
<b>Total Change</b>	<b>-174</b>	<b>-1,298</b>	<b>-5</b>	<b>-2,692</b>	<b>+110</b>	<b>-0.3</b>	<b>-0.2</b>	<b>-158</b>	<b>+0.5</b>	<b>+12.8</b>

**Table 2. Comparison of Layouts for Each Facility Component (STI-PVH layout)**

Layout Version	Solar Array (Acres)	Access Roads (Feet)	Inverters (Quantity)	Underground Collection Lines (Feet)	Overhead Transmission Line (Feet)	Collection Substation (Acres)	POI Substation (Acres)	Area Within Fenceline (Acres)	O&M Building (Acres)	Laydown Yard (Acres)
Initial Application layout	888	39,436	32	69,248	8,392	1.4	1.4	982	5.1	9.8
STI-PVH layout	726	36,598	28	64,808	8,502	1.1	1.2	830	5.6	23.5
<b>Total Change</b>	<b>-162</b>	<b>-2,838</b>	<b>-4</b>	<b>-4,440</b>	<b>+110</b>	<b>-0.3</b>	<b>-0.2</b>	<b>-152</b>	<b>+0.5</b>	<b>+13.7</b>

## **IMPACT ANALYSIS**

In order to provide an “apples-to-apples” comparison with the Initial Application layout, impacts of the alternative layouts have been evaluated using the same methods as presented in the Initial Application, to the extent possible.

### **Wetlands and Streams**

Impacts to delineated wetlands and streams have been avoided to the maximum extent possible. Both alternative layouts have avoided all stream crossings by access roads, eliminating all three streams crossed by access roads in the Initial Application layout (Figure 9). Both alternative layouts include two access roads that cross a delineated wetland along Road 12 near the POI substation, in the same area that the Initial Application layout contains one access road crossing that wetland.

In the Initial Application layout, there were six collection line stream crossing locations. The number of crossings has been reduced to five in the ATI layout and four in the STI-PVH layout (Figure 10). These will be underground collection line crossings installed by horizontal directional drilling and will result in no permanent impact to the stream.

### **Vegetation and Habitat**

The alternative layouts avoid impacts to larger woodlots, and the total area of tree clearing will be the same or less as proposed in the Initial Application layout. No additional threatened and endangered species or their habitat have been encountered since the filing of the application.

### **Land Use**

Facility-related impacts to land use were calculated based on the impact assumptions provided in Table 3 and the land use codes for each parcel, obtained from the Putman County Auditor’s Office. Using GIS software, Facility components for each layout and their related impact areas were intersected with the parcel data, resulting in areas of impact to each land use associated with the respective Facility components. The impact areas for these Facility components were aggregated using GIS software and recorded in spreadsheets, which were used to calculate the total impact areas. In areas where features overlap, analyses using GIS were conducted to eliminate overlap in order to avoid overestimations of impacts. Table 4 and Table 5 present the total land use impacts associated with the alternative layouts, and a comparison with the impacts of the Initial Application layout.

**Table 3. Impact Assumptions**

Facility Component	Temporary Impact <sup>1</sup>	Permanent Impact	Total Impact
Access Road	10 feet wide	20 feet wide	30 feet wide
Collection Line	30 feet wide	None	30 feet wide
Inverter Pad <sup>2</sup>	Single Inverter – 560 ft <sup>2</sup>	Single Inverter – 640 ft <sup>2</sup>	Single Inverter- 1,200 ft <sup>2</sup>
	Double Inverter – 660 ft <sup>2</sup>	Double Inverter – 840 ft <sup>2</sup>	Double Inverter- 1,500 ft <sup>2</sup>

1. Temporary impact areas represent only the additional impact area during construction and do not include the permanent impact area. The temporary and permanent impact area are added together in the total impact column.
2. Up to 32 inverter pads are proposed for the Initial Application layout, four single and 28 double inverters. For the purposes of impact calculations, all inverters in the alternative layouts were assumed to have the same area impact as the double inverters in the Initial Application layout.

**Table 4. Land Use Impacts (ATI layout)**

Facility Component	Temporary Impact of alternative layout (acres)	Permanent Impact of alternative layout (acres)	Total Impact of alternative layout (acres)	Total Impact of Initial Application layout (acres)	Change in Total Impact (acres)
<b>Agricultural (100's)</b>					
Solar Array	0.0	714.0	714.0	888.0	-174.0
Access Road	8.1	17.1	25.2	25.7	-0.5
Underground Collection Line	19.7	0.0	19.7	32.0	-12.3
Transmission Line <sup>1</sup>	0.0	27.9	27.9	19.1	+8.8
Laydown Yard	21.8	0.0	21.8	9.8	+12.0
O&M Building	0.0	5.7	5.7	5.1	+0.6
Collection Substation	0.0	1.1	1.1	2.1	-1.0
POI Substation	0.0	1.2	1.2	2.1	-0.9
Temporary BMP Pond <sup>2</sup>	47.6	0.0	47.6	0.0	+47.6
Inverter Pad	0.4	0.5	0.9	1.1	-0.2
<b>Total Agricultural</b>	<b>97.6</b>	<b>767.5</b>	<b>865.1</b>	<b>985.0</b>	<b>-119.9</b>
<b>Residential (500's)</b>					
Access Road	0.0	0.0	0.0	<0.1	-<0.1
Collection Line	<0.1	0.0	<0.1	<0.1	0.0
<b>Total Residential</b>	<b>&lt;0.1</b>	<b>0.0</b>	<b>&lt;0.1</b>	<b>&lt;0.1</b>	<b>0.0</b>
<b>Public Utility (800's)</b>					
Collection Line	<0.1	0.0	<0.1	<0.1	0.0
<b>Total Public Utility</b>	<b>&lt;0.1</b>	<b>0.0</b>	<b>&lt;0.1</b>	<b>&lt;0.1</b>	<b>0.0</b>
<b>Total Impact</b>	<b>97.7</b>	<b>767.5</b>	<b>865.2</b>	<b>985.3</b>	<b>-120.1</b>

1. The impact calculations in the Initial Application assumed a permanent impact of a 150-foot-wide right-of-way for the transmission line. To provide an accurate comparison, this assumption was also used in the above calculations for the alternative layout. The transmission line is largely sited along a public road, and furthermore it is not likely that it will present a permanent impact for a 150-foot-wide corridor.
2. Temporary BMP Ponds were not included in the Initial Application layout. They are present in the alternative layouts and have been included in impact calculations



The permanent land use impact associated with the ATI layout includes approximately 865 acres, which represents approximately 43% of the 2,013-acre Project Area. Compared to the Initial Application layout, the footprint of the Facility is reduced by approximately 120 acres. This reduction is due in large part to the reduction in the area of solar arrays, as shown on Figure 4.

**Table 5. Land Use Impacts (STI-PVH layout)**

Facility Component	Temporary Impact of alternative layout (acres)	Permanent Impact of alternative layout (acres)	Total Impact of alternative layout (acres)	Total Impact of Initial Application layout (acres)	Change in Total Impact (acres)
<b>Agricultural (100's)</b>					
Solar Array	0.0	726.4	726.4	888.0	-161.6
Access Road	7.9	16.8	24.7	25.7	-1.0
Underground Collection Line	18.1	0.0	18.1	32.0	-13.9
Transmission Line <sup>1</sup>	0.0	27.9	27.9	19.1	+8.8
Laydown Yard	22.7	0.0	22.7	9.8	+12.9
O&M Building	0.0	5.7	5.7	5.1	+0.6
Collection Substation	0.0	1.1	1.1	2.1	-1.0
POI Substation	0.0	1.2	1.2	2.1	-0.9
Temporary BMP Pond <sup>2</sup>	48.7	0.0	48.7	0.0	+48.7
Inverter Pad	0.4	0.5	0.9	1.1	-0.2
<b>Total Agricultural</b>	<b>97.8</b>	<b>779.6</b>	<b>877.4</b>	<b>985.0</b>	<b>-107.6</b>
<b>Residential (500's)</b>					
Access Road	0.0	0.0	0.0	<0.1	-<0.1
Collection Line	0.0	0.0	0.0	<0.1	-<0.1
<b>Total Residential</b>	<b>0.0</b>	<b>0.0</b>	<b>0.0</b>	<b>&lt;0.1</b>	<b>-&lt;0.1</b>
<b>Public Utility (800's)</b>					
Collection Line	<0.1	0.0	<0.1	<0.1	0.0
<b>Total Public Utility</b>	<b>&lt;0.1</b>	<b>0.0</b>	<b>&lt;0.1</b>	<b>&lt;0.1</b>	<b>0.0</b>
<b>Total Impact</b>	<b>97.9</b>	<b>779.6</b>	<b>877.5</b>	<b>985.3</b>	<b>-107.8</b>

1. The impact calculations in the Initial Application assumed a permanent impact of a 150-foot-wide right-of-way for the transmission line. To provide an accurate comparison, this assumption was also used in the above calculations for the alternative layout. The transmission line is largely sited along a public road, and furthermore it is not likely that it will present a permanent impact for a 150-foot-wide corridor.
2. Temporary BMP Ponds were not included in the Initial Application layout. They are present in the alternative layouts and have been included in impact calculations.

The permanent land use impact associated with the STI-PVH layout includes approximately 878 acres, which represents approximately 44% of the 2,013-acre Project Area. Compared to the Initial Application layout, the footprint of the Facility is reduced by approximately 108 acres. This reduction is due in large part to the reduction in the area of solar arrays, as shown on Figure 4.

## DISTANCE ANALYSIS

Distances between structures and property lines and alternative layout components are shown in the subsequent tables. A comparison with the distances from the Initial Application layout is included in the following discussion.

### Structures and Property Lines within 1,500 Feet of Solar Arrays

Table 6 and Table 7 identify structures within 1,500 feet of a solar array and the lease status of the underlying parcel (i.e., participating or non-participating).

For the ATI layout, there are 112 structures within 1,500 feet of a solar array. The closest distance between the nearest non-participating structure and a solar array has increased from 226 feet in the Initial Application layout to 295 feet in the ATI layout.

For the STI-PVH layout, there are 109 structures within 1,500 feet of a solar array. The closest distance between the nearest non-participating structure and a solar array has increased from 226 feet in the Initial Application layout to 295 feet in the STI-PVH layout.

**Table 6. Structures Within 1,500 Feet of a Solar Array (ATI layout)**

Structure Type	Distance to Solar Array (Feet)	Lease Status of Underlying Parcel
Residence	165	Participating
Residence	267	Participating
Residence	288	Participating
Residence	293	Participating
Residence	294	Participating
Residence	339	Participating
Residence	340	Participating
Residence	415	Participating
Residence	487	Participating
Residence	488	Participating
Residence	502	Participating
Residence	504	Participating
Residence	513	Participating
Residence	523	Participating
Residence	545	Participating
Residence	545	Participating
Residence	610	Participating
Residence	619	Participating
Residence	740	Participating
Residence	741	Participating

**Table 6. Structures Within 1,500 Feet of a Solar Array (ATI layout)**

<b>Structure Type</b>	<b>Distance to Solar Array (Feet)</b>	<b>Lease Status of Underlying Parcel</b>
Residence	806	Participating
Residence	995	Participating
Residence	295	Non-participating
Residence	416	Non-participating
Residence	418	Non-participating
Residence	422	Non-participating
Residence	433	Non-participating
Residence	435	Non-participating
Commercial	438	Non-participating
Commercial	450	Non-participating
Residence	470	Non-participating
Commercial	521	Non-participating
Residence	524	Non-participating
Residence	547	Non-participating
Residence	569	Non-participating
Residence	590	Non-participating
Residence	603	Non-participating
Residence	606	Non-participating
Residence	617	Non-participating
Residence	663	Non-participating
Residence	674	Non-participating
Residence	674	Non-participating
Residence	683	Non-participating
Residence	701	Non-participating
Church	710	Non-participating
Residence	732	Non-participating
Residence	745	Non-participating
Residence	773	Non-participating
Residence	784	Non-participating
Residence	791	Non-participating
Residence	798	Non-participating
Residence	820	Non-participating
School	832	Non-participating
Residence	842	Non-participating
Residence	847	Non-participating
Residence	877	Non-participating
Residence	880	Non-participating
Residence	885	Non-participating
Residence	893	Non-participating

**Table 6. Structures Within 1,500 Feet of a Solar Array (ATI layout)**

<b>Structure Type</b>	<b>Distance to Solar Array (Feet)</b>	<b>Lease Status of Underlying Parcel</b>
Residence	902	Non-participating
Commercial	911	Non-participating
Residence	911	Non-participating
Residence	925	Non-participating
Residence	932	Non-participating
Residence	943	Non-participating
Residence	943	Non-participating
Church	950	Non-participating
Commercial	955	Non-participating
Residence	980	Non-participating
Residence	990	Non-participating
Residence	992	Non-participating
Residence	1,014	Non-participating
Residence	1,028	Non-participating
Residence	1,035	Non-participating
Residence	1,055	Non-participating
Residence	1,057	Non-participating
Residence	1,077	Non-participating
Residence	1,084	Non-participating
Commercial	1,086	Non-participating
Residence	1,090	Non-participating
Residence	1,106	Non-participating
Commercial	1,118	Non-participating
Residence	1,121	Non-participating
Commercial	1,159	Non-participating
Residence	1,179	Non-participating
Residence	1,192	Non-participating
School	1,216	Non-participating
Residence	1,229	Non-participating
Residence	1,229	Non-participating
Residence	1,233	Non-participating
Residence	1,236	Non-participating
Residence	1,240	Non-participating
Residence	1,255	Non-participating
Residence	1,268	Non-participating
Government building	1,278	Non-participating
Residence	1,280	Non-participating
Residence	1,287	Non-participating

**Table 6. Structures Within 1,500 Feet of a Solar Array (ATI layout)**

Structure Type	Distance to Solar Array (Feet)	Lease Status of Underlying Parcel
Residence	1,291	Non-participating
Residence	1,325	Non-participating
Residence	1,327	Non-participating
Residence	1,339	Non-participating
Residence	1,348	Non-participating
Residence	1,360	Non-participating
Residence	1,371	Non-participating
Residence	1,373	Non-participating
Residence	1,415	Non-participating
Residence	1,426	Non-participating
Residence	1,427	Non-participating
Residence	1,428	Non-participating
Residence	1,430	Non-participating
Residence	1,468	Non-participating
Residence	1,491	Non-participating

**Table 7. Structures Within 1,500 Feet of a Solar Array (STI-PVH layout)**

Structure Type	Distance to Solar Array (Feet)	Lease Status of Underlying Parcel
Residence	175	Participating
Residence	272	Participating
Residence	296	Participating
Residence	299	Participating
Residence	347	Participating
Residence	355	Participating
Residence	372	Participating
Residence	424	Participating
Residence	434	Participating
Residence	464	Participating
Residence	477	Participating
Residence	488	Participating
Residence	548	Participating
Residence	551	Participating
Residence	566	Participating
Residence	577	Participating
Residence	592	Participating
Residence	609	Participating
Residence	745	Participating
Residence	774	Participating

**Table 7. Structures Within 1,500 Feet of a Solar Array (STI-PVH layout)**

<b>Structure Type</b>	<b>Distance to Solar Array (Feet)</b>	<b>Lease Status of Underlying Parcel</b>
Residence	792	Participating
Residence	1,001	Participating
Residence	295	Non-participating
Commercial	355	Non-participating
Residence	474	Non-participating
Residence	500	Non-participating
Residence	501	Non-participating
Residence	517	Non-participating
Residence	519	Non-participating
Commercial	529	Non-participating
Residence	532	Non-participating
Residence	546	Non-participating
Residence	550	Non-participating
Residence	553	Non-participating
Residence	584	Non-participating
Residence	603	Non-participating
Commercial	617	Non-participating
Residence	661	Non-participating
Residence	663	Non-participating
Residence	673	Non-participating
Residence	693	Non-participating
Residence	702	Non-participating
Church	737	Non-participating
Residence	747	Non-participating
Residence	758	Non-participating
Residence	770	Non-participating
Residence	773	Non-participating
Residence	778	Non-participating
Residence	810	Non-participating
Residence	839	Non-participating
Residence	846	Non-participating
School	854	Non-participating
Residence	855	Non-participating
Residence	873	Non-participating
Residence	882	Non-participating
Residence	886	Non-participating
Residence	894	Non-participating
Residence	904	Non-participating
Residence	911	Non-participating

**Table 7. Structures Within 1,500 Feet of a Solar Array (STI-PVH layout)**

<b>Structure Type</b>	<b>Distance to Solar Array (Feet)</b>	<b>Lease Status of Underlying Parcel</b>
Residence	915	Non-participating
Residence	923	Non-participating
Residence	935	Non-participating
Residence	969	Non-participating
Church	976	Non-participating
Residence	989	Non-participating
Commercial	989	Non-participating
Residence	1,006	Non-participating
Residence	1,016	Non-participating
Commercial	1,032	Non-participating
Residence	1,033	Non-participating
Residence	1,038	Non-participating
Residence	1,054	Non-participating
Residence	1,078	Non-participating
Residence	1,083	Non-participating
Residence	1,102	Non-participating
Residence	1,103	Non-participating
Residence	1,116	Non-participating
Residence	1,148	Non-participating
Residence	1,150	Non-participating
Commercial	1,171	Non-participating
Commercial	1,190	Non-participating
Residence	1,192	Non-participating
Residence	1,206	Non-participating
Residence	1,213	Non-participating
Residence	1,229	Non-participating
Commercial	1,233	Non-participating
School	1,238	Non-participating
Residence	1,255	Non-participating
Residence	1,262	Non-participating
Residence	1,266	Non-participating
Residence	1,280	Non-participating
Residence	1,290	Non-participating
Residence	1,291	Non-participating
Residence	1,307	Non-participating
Residence	1,313	Non-participating
Residence	1,316	Non-participating
Residence	1,320	Non-participating
Residence	1,327	Non-participating

**Table 7. Structures Within 1,500 Feet of a Solar Array (STI-PVH layout)**

Structure Type	Distance to Solar Array (Feet)	Lease Status of Underlying Parcel
Government building	1,351	Non-participating
Residence	1,355	Non-participating
Residence	1,387	Non-participating
Residence	1,415	Non-participating
Residence	1,415	Non-participating
Residence	1,427	Non-participating
Residence	1,430	Non-participating
Residence	1,441	Non-participating
Residence	1,448	Non-participating
Residence	1,453	Non-participating
Residence	1,491	Non-participating

Table 8 and Table 9 identify parcels within 1,500 feet of a solar array and the lease status of each parcel. This evaluation was conducted using digital parcel data from the Putnam County Auditor. Publicly available digital parcel data is not sufficiently accurate for precise measurement of distances. As such, these distance measurements may not precisely match distance measurements calculated from property surveys of parcels in the Project Area.

For the ATI layout, there are 378 parcels within 1,500 feet of a solar array. The closest distance between a non-participating parcel and a solar array has decreased from 53 feet in the Initial Application layout to 49 feet in the ATI layout.

For the STI-PVH layout, there are 370 parcels within 1,500 feet of a solar array. The closest distance between a non-participating parcel and a solar array has increased from 53 feet in the Initial Application layout to 54 feet in the STI-PVH layout.

**Table 8. Parcels Within 1,500 Feet of a PV Panel (ATI layout)**

Parcel ID	Distance to PV Panel (Feet) <sup>1</sup>	Lease Status <sup>2</sup>
330111100000	0	Participating
330112000000	0	Participating
330130600000	0	Participating
330130900100	0	Participating
330150800100	0	Participating
330150800200	0	Participating
330150800300	0	Participating



**Table 8. Parcels Within 1,500 Feet of a PV Panel (ATI layout)**

<b>Parcel ID</b>	<b>Distance to PV Panel (Feet)<sup>1</sup></b>	<b>Lease Status<sup>2</sup></b>
330160700000	0	Participating
330160800100	0	Participating
330161000000	0	Participating
330161100000	0	Participating
330161200000	0	Participating
330161300000	0	Participating
330161400000	0	Participating
330161500000	0	Participating
330161600000	0	Participating
190330700000	0	Participating
190331000000	0	Participating
190331400000	0	Participating
190331500000	0	Participating
190331600000	0	Participating
190331700000	0	Participating
190331900000	0	Participating
190332000000	0	Participating
190341000000	0	Participating
190341000100	0	Participating
200420300000	0	Participating
360531510000	0	Participating
330130900300	24	Participating
190331100000	28	Participating
190331300000	29	Participating
330121800000	57	Participating
330130700000	82	Participating
330160800000	90	Participating
330160900000	125	Participating
330161300100	133	Participating
330130650000	140	Participating
190331410000	157	Participating
330151900000	183	Participating
190341400000	187	Participating
190340900000	198	Participating
190340400000	201	Participating
190340100000	209	Participating
190400500000	223	Participating
330161610100	267	Participating
190340300000	269	Participating

**Table 8. Parcels Within 1,500 Feet of a PV Panel (ATI layout)**

<b>Parcel ID</b>	<b>Distance to PV Panel (Feet)<sup>1</sup></b>	<b>Lease Status<sup>2</sup></b>
330111500000	288	Participating
200420100000	293	Participating
190331900300	300	Participating
330111610000	312	Participating
330111200000	322	Participating
190331200100	324	Participating
190331900200	357	Participating
330111400800	360	Participating
360531460000	362	Participating
360531470000	365	Participating
360531480000	368	Participating
330111700100	395	Participating
190331920000	481	Participating
190330800000	538	Participating
330120100000	542	Participating
330152000000	620	Participating
190331910000	647	Participating
330151600000	649	Participating
330130900200	686	Participating
190330800100	781	Participating
330151800000	904	Participating
330160200000	1,238	Participating
330131600100	1,354	Participating
330131600000	1,356	Participating
330131100000	1,375	Participating
330160100000	1,411	Participating
360531560000	49	Non-Participating
330130400000	63	Non-Participating
330130800000	77	Non-Participating
330161830000 (330161800000)	79	Non-Participating
330161820000	79	Non-Participating
330161700000	79	Non-Participating
360531670000	84	Non-Participating
330161900000	85	Non-Participating
200420700000	91	Non-Participating
330111700000	99	Non-Participating
330120400000	108	Non-Participating
330111300000	113	Non-Participating

**Table 8. Parcels Within 1,500 Feet of a PV Panel (ATI layout)**

<b>Parcel ID</b>	<b>Distance to PV Panel (Feet)<sup>1</sup></b>	<b>Lease Status<sup>2</sup></b>
300160700000	119	Non-Participating
330110600000	121	Non-Participating
330110500000	122	Non-Participating
190331210110	144	Non-Participating
190330900000	146	Non-Participating
330111900000	146	Non-Participating
060010210000	167	Non-Participating
330151100000	168	Non-Participating
330151000000	169	Non-Participating
360531520000	171	Non-Participating
360550200000	182	Non-Participating
200420400000	187	Non-Participating
330170700000	188	Non-Participating
190340860000	197	Non-Participating
190260410000	205	Non-Participating
330120700100	215	Non-Participating
330120700000	215	Non-Participating
330120600000	216	Non-Participating
190331210200	223	Non-Participating
190340100130	228	Non-Participating
330130800100	235	Non-Participating
330120500000	248	Non-Participating
190331900100	267	Non-Participating
330161610000	278	Non-Participating
360531640000	282	Non-Participating
360531500000	286	Non-Participating
200420200000	290	Non-Participating
360531570000	323	Non-Participating
330130500000	327	Non-Participating
330121700000	336	Non-Participating
190330600000	337	Non-Participating
060010210100	340	Non-Participating
360531650000	341	Non-Participating
330121600000	342	Non-Participating
330122000000	346	Non-Participating
360531630000	347	Non-Participating
360511400000	359	Non-Participating
360511500000	360	Non-Participating
360511600000	361	Non-Participating

**Table 8. Parcels Within 1,500 Feet of a PV Panel (ATI layout)**

<b>Parcel ID</b>	<b>Distance to PV Panel (Feet)<sup>1</sup></b>	<b>Lease Status<sup>2</sup></b>
360511700000	362	Non-Participating
330121300000	363	Non-Participating
360531490000	371	Non-Participating
360531420000	374	Non-Participating
360450100000	375	Non-Participating
360470500000	376	Non-Participating
330111000200	380	Non-Participating
360490200000	389	Non-Participating
330111800000	391	Non-Participating
360470600000	396	Non-Participating
190340870000	411	Non-Participating
360490100000	411	Non-Participating
190340100100	416	Non-Participating
360450100000 (360450200000)	425	Non-Participating
360470400000	426	Non-Participating
360482000000	438	Non-Participating
190331210310	440	Non-Participating
360470700000	443	Non-Participating
360560350100	457	Non-Participating
080130110000	463	Non-Participating
360450300000	465	Non-Participating
360450300000 (360450400000)	474	Non-Participating
330130800100 (330130810000)	478	Non-Participating
360470300000	492	Non-Participating
360560350200	498	Non-Participating
360470800000	507	Non-Participating
360481900000	516	Non-Participating
190341500000	519	Non-Participating
330130800200	520	Non-Participating
360511800000	527	Non-Participating
080130120000	527	Non-Participating
330120200000	542	Non-Participating
330120300000	542	Non-Participating
360470300000 (360470200000)	542	Non-Participating
360481800000	544	Non-Participating

**Table 8. Parcels Within 1,500 Feet of a PV Panel (ATI layout)**

<b>Parcel ID</b>	<b>Distance to PV Panel (Feet)<sup>1</sup></b>	<b>Lease Status<sup>2</sup></b>
360490300000	547	Non-Participating
360490400000	552	Non-Participating
360560350300	556	Non-Participating
360470800000 (360470900000)	556	Non-Participating
330111300100	566	Non-Participating
360531660000	566	Non-Participating
330151200000	569	Non-Participating
360531400000	573	Non-Participating
360511900000	577	Non-Participating
360450700000 (360450500000)	580	Non-Participating
360561000000	592	Non-Participating
360490400000 (360490500000)	595	Non-Participating
190331210311	596	Non-Participating
360560350400	600	Non-Participating
360450700000 (360450600000)	606	Non-Participating
360560600000	625	Non-Participating
360512000000	627	Non-Participating
190320910300	629	Non-Participating
190320910200	630	Non-Participating
190320910000	632	Non-Participating
190320910100	633	Non-Participating
190320800000	636	Non-Participating
360450700000	641	Non-Participating
190331210100	642	Non-Participating
360491100000	643	Non-Participating
360490600000	643	Non-Participating
190340800100	645	Non-Participating
190340810000	647	Non-Participating
360450500100	652	Non-Participating
360531410000	653	Non-Participating
200420500000	676	Non-Participating
360451510000	684	Non-Participating
360531610000	697	Non-Participating
360531600000	702	Non-Participating
060010100000	704	Non-Participating

**Table 8. Parcels Within 1,500 Feet of a PV Panel (ATI layout)**

<b>Parcel ID</b>	<b>Distance to PV Panel (Feet)<sup>1</sup></b>	<b>Lease Status<sup>2</sup></b>
360531590000	704	Non-Participating
190340200000	707	Non-Participating
190331210300	708	Non-Participating
360560800000	718	Non-Participating
360451520000	729	Non-Participating
360450900000	735	Non-Participating
190341200000	743	Non-Participating
360531300000	745	Non-Participating
360520100000	747	Non-Participating
190340820000	764	Non-Participating
190341120000	766	Non-Participating
190341130000	769	Non-Participating
360451500000	769	Non-Participating
360451600000 (360450800000)	771	Non-Participating
190341100100	771	Non-Participating
360451200000	771	Non-Participating
360461700000 (360470100000)	774	Non-Participating
190341140000	776	Non-Participating
330150900000	776	Non-Participating
080130100000	787	Non-Participating
300160600000	791	Non-Participating
190320800300	794	Non-Participating
360461700000 (360461800000)	796	Non-Participating
190341150000	797	Non-Participating
360451600000 (360451300000)	806	Non-Participating
360461700000 (360462000000)	807	Non-Participating
360451400000	810	Non-Participating
360471200000 (360471000000)	815	Non-Participating
190321000000	818	Non-Participating
360531620000	821	Non-Participating
360461700000 (360461600000)	823	Non-Participating
360491000000	832	Non-Participating

**Table 8. Parcels Within 1,500 Feet of a PV Panel (ATI layout)**

<b>Parcel ID</b>	<b>Distance to PV Panel (Feet)<sup>1</sup></b>	<b>Lease Status<sup>2</sup></b>
360461700000 (360461900000)	839	Non-Participating
360451600000	842	Non-Participating
190341100210	849	Non-Participating
190340100110	852	Non-Participating
360461500000	857	Non-Participating
360471200000 (360471100000)	862	Non-Participating
360461700000	865	Non-Participating
190341100200	873	Non-Participating
360481600000	876	Non-Participating
360451700000	878	Non-Participating
360560700000	885	Non-Participating
360461200000	893	Non-Participating
360460700000 (360461300000)	897	Non-Participating
190350400000	899	Non-Participating
360481700000	905	Non-Participating
300152000100	907	Non-Participating
360511000000	909	Non-Participating
360471200000	911	Non-Participating
190340100120	917	Non-Participating
360510900000	920	Non-Participating
360560300000	921	Non-Participating
190341210000	923	Non-Participating
360481500000	924	Non-Participating
300152000000	926	Non-Participating
360460900000	926	Non-Participating
360460700000 (360461000000)	932	Non-Participating
360461400000	938	Non-Participating
190341100300	949	Non-Participating
360500200000	953	Non-Participating
360460700000	964	Non-Participating
360560500000	967	Non-Participating
360471600000 (360471300000)	969	Non-Participating
360481400000	970	Non-Participating
360461100000	972	Non-Participating

**Table 8. Parcels Within 1,500 Feet of a PV Panel (ATI layout)**

<b>Parcel ID</b>	<b>Distance to PV Panel (Feet)<sup>1</sup></b>	<b>Lease Status<sup>2</sup></b>
190340130000 (190340140000)	973	Non-Participating
330161830000	977	Non-Participating
360492000000	980	Non-Participating
360471400000	981	Non-Participating
360491900000	986	Non-Participating
360510800000	989	Non-Participating
190350600000	998	Non-Participating
190320700000	999	Non-Participating
360460800000	1,002	Non-Participating
360491800000	1,009	Non-Participating
360460600000	1,012	Non-Participating
330151610000	1,022	Non-Participating
360471600000 (360471500000)	1,026	Non-Participating
360481300000	1,032	Non-Participating
330151300000	1,035	Non-Participating
360510700000	1,035	Non-Participating
190350500000	1,036	Non-Participating
360471700000	1,038	Non-Participating
360500300000	1,044	Non-Participating
360500100000	1,046	Non-Participating
360460500000	1,046	Non-Participating
360460600000 (360460300000)	1,049	Non-Participating
360471600000	1,055	Non-Participating
190350700000	1,057	Non-Participating
190340830000	1,063	Non-Participating
360510500000	1,063	Non-Participating
190320800100	1,072	Non-Participating
190320800100 (190320800200)	1,073	Non-Participating
360481200000	1,079	Non-Participating
360460400000	1,082	Non-Participating
360510600000	1,082	Non-Participating
360491600000	1,086	Non-Participating
360460600000 (360460200000)	1,087	Non-Participating
360500400000	1,100	Non-Participating



**Table 8. Parcels Within 1,500 Feet of a PV Panel (ATI layout)**

<b>Parcel ID</b>	<b>Distance to PV Panel (Feet)<sup>1</sup></b>	<b>Lease Status<sup>2</sup></b>
330161810000	1,119	Non-Participating
360460100000	1,119	Non-Participating
360491400000	1,120	Non-Participating
360500500000	1,124	Non-Participating
360481100000	1,126	Non-Participating
360471900000	1,130	Non-Participating
190340130000	1,135	Non-Participating
360452000000	1,140	Non-Participating
360491500000 (360491700000)	1,145	Non-Participating
190330300200	1,146	Non-Participating
360500600000	1,150	Non-Participating
360491200000	1,155	Non-Participating
360531550000	1,163	Non-Participating
360472000000	1,164	Non-Participating
190340300200	1,164	Non-Participating
360531430000	1,168	Non-Participating
190341300000	1,170	Non-Participating
360491500000	1,177	Non-Participating
360452000000 (360451900000)	1,180	Non-Participating
330161710000	1,182	Non-Participating
360471800000	1,186	Non-Participating
360560900000	1,196	Non-Participating
360480200000	1,199	Non-Participating
330161720000	1,201	Non-Participating
360521800000	1,201	Non-Participating
360491500000 (360491300000)	1,211	Non-Participating
360491500000 (360500700000)	1,213	Non-Participating
360471800000 (360480100000)	1,218	Non-Participating
360452000000 (360451800000)	1,222	Non-Participating
360531450000	1,225	Non-Participating
360531440000	1,233	Non-Participating
190330300300	1,240	Non-Participating
360560400000	1,241	Non-Participating

**Table 8. Parcels Within 1,500 Feet of a PV Panel (ATI layout)**

<b>Parcel ID</b>	<b>Distance to PV Panel (Feet)<sup>1</sup></b>	<b>Lease Status<sup>2</sup></b>
360500800000	1,244	Non-Participating
360521600000	1,245	Non-Participating
360480300000	1,247	Non-Participating
360491500000 (360521700000)	1,256	Non-Participating
360500900000	1,276	Non-Participating
360521400000	1,284	Non-Participating
360480400000	1,284	Non-Participating
360481000000	1,289	Non-Participating
190320900000	1,289	Non-Participating
330111010000	1,290	Non-Participating
360501500000	1,298	Non-Participating
360491500000 (360521500000)	1,298	Non-Participating
190340130000 (190340120000)	1,311	Non-Participating
190350800000	1,313	Non-Participating
360501400000	1,318	Non-Participating
360520900000	1,319	Non-Participating
360480500000	1,322	Non-Participating
360491500000 (360521300000)	1,335	Non-Participating
360480900000	1,337	Non-Participating
190340300100	1,338	Non-Participating
360501300000	1,341	Non-Participating
360531530000	1,351	Non-Participating
190320800400	1,352	Non-Participating
190340850000	1,354	Non-Participating
360521100000	1,359	Non-Participating
330111000210	1,362	Non-Participating
330131700000	1,365	Non-Participating
360521000000	1,377	Non-Participating
360521200000	1,395	Non-Participating
330151500000	1,396	Non-Participating
360501200000	1,400	Non-Participating
360480800000	1,401	Non-Participating
190340120100	1,402	Non-Participating
330131000000	1,410	Non-Participating
190340520100	1,411	Non-Participating

**Table 8. Parcels Within 1,500 Feet of a PV Panel (ATI layout)**

Parcel ID	Distance to PV Panel (Feet) <sup>1</sup>	Lease Status <sup>2</sup>
360501100000	1,427	Non-Participating
330151400000	1,443	Non-Participating
080130200000	1,443	Non-Participating
190340500100	1,444	Non-Participating
360480700000	1,446	Non-Participating
330110400000	1,449	Non-Participating
360501700000	1,451	Non-Participating
360501000000	1,455	Non-Participating
300160800100	1,465	Non-Participating
190260400000	1,465	Non-Participating
300160800000	1,469	Non-Participating
360501900000	1,470	Non-Participating
360480600000	1,480	Non-Participating
360510100000	1,490	Non-Participating
330110900000	1,492	Non-Participating
360520800000	1,492	Non-Participating
190340110000	1,494	Non-Participating

1. Distances that equal zero represent parcels that contain solar arrays.

2. Landowners with parcels anticipated to be under a lease or easement agreement at the time of Facility construction are identified as participating for the purposes of this Application.

**Table 9. Parcels Within 1,500 Feet of a PV Panel (STI-PVH layout)**

Parcel ID	Distance to PV Panel (Feet) <sup>1</sup>	Lease Status <sup>2</sup>
330111100000	0	Participating
330112000000	0	Participating
330130600000	0	Participating
330130900100	0	Participating
330150800100	0	Participating
330150800200	0	Participating
330150800300	0	Participating
330160700000	0	Participating
330160800100	0	Participating
330161000000	0	Participating
330161100000	0	Participating
330161200000	0	Participating
330161300000	0	Participating

**Table 9. Parcels Within 1,500 Feet of a PV Panel (STI-PVH layout)**

Parcel ID	Distance to PV Panel (Feet) <sup>1</sup>	Lease Status <sup>2</sup>
330161400000	0	Participating
330161500000	0	Participating
330161600000	0	Participating
190330700000	0	Participating
190331000000	0	Participating
190331400000	0	Participating
190331500000	0	Participating
190331600000	0	Participating
190331700000	0	Participating
190331900000	0	Participating
190332000000	0	Participating
190341000000	0	Participating
200420300000	0	Participating
360531510000	0	Participating
330130900300	28	Participating
190331100000	36	Participating
190331300000	36	Participating
330160800000	39	Participating
330121800000	47	Participating
330161610100	70	Participating
330130700000	73	Participating
190341000100	82	Participating
330151900000	124	Participating
330161300100	133	Participating
190331410000	165	Participating
190341400000	165	Participating
330130650000	166	Participating
330160900000	172	Participating
190400500000	183	Participating
190340400000	201	Participating
190340900000	206	Participating
190340100000	218	Participating
190331200100	284	Participating
200420100000	286	Participating
330111200000	289	Participating
190331900300	300	Participating
330111500000	307	Participating

**Table 9. Parcels Within 1,500 Feet of a PV Panel (STI-PVH layout)**

<b>Parcel ID</b>	<b>Distance to PV Panel (Feet)<sup>1</sup></b>	<b>Lease Status<sup>2</sup></b>
330111610000	330	Participating
190331900200	357	Participating
190340300000	401	Participating
330111400800	424	Participating
360531460000	426	Participating
360531470000	429	Participating
360531480000	432	Participating
190331920000	481	Participating
330111700100	515	Participating
190330800000	537	Participating
330120100000	560	Participating
330152000000	584	Participating
330151600000	594	Participating
190331910000	652	Participating
330130900200	691	Participating
190330800100	788	Participating
330151800000	912	Participating
330160200000	1,144	Participating
330131600000	1,360	Participating
330131100000	1,362	Participating
330131600100	1,363	Participating
330160100000	1,411	Participating
330130400000	54	Non-Participating
330111700000	58	Non-Participating
360531560000	59	Non-Participating
330130800000	68	Non-Participating
330120400000	68	Non-Participating
330111300000	73	Non-Participating
200420700000	79	Non-Participating
330161830000 (330161800000)	79	Non-Participating
330161820000	79	Non-Participating
330161700000	79	Non-Participating
330161900000	85	Non-Participating
360531670000	86	Non-Participating
330111900000	90	Non-Participating
300160700000	113	Non-Participating

**Table 9. Parcels Within 1,500 Feet of a PV Panel (STI-PVH layout)**

<b>Parcel ID</b>	<b>Distance to PV Panel (Feet)<sup>1</sup></b>	<b>Lease Status<sup>2</sup></b>
330151000000	120	Non-Participating
330110600000	121	Non-Participating
330120500000	121	Non-Participating
330120700100	121	Non-Participating
330110500000	122	Non-Participating
330120700000	122	Non-Participating
330120600000	122	Non-Participating
330151100000	130	Non-Participating
330130800100	155	Non-Participating
060010210000	170	Non-Participating
200420400000	190	Non-Participating
360550200000	202	Non-Participating
190340860000	206	Non-Participating
330170700000	207	Non-Participating
190330900000	216	Non-Participating
360531520000	217	Non-Participating
190340100130	228	Non-Participating
190331210110	233	Non-Participating
190331210200	237	Non-Participating
330161610000	253	Non-Participating
190260410000	262	Non-Participating
190331900100	267	Non-Participating
200420200000	284	Non-Participating
190330600000	297	Non-Participating
360531640000	302	Non-Participating
360531500000	306	Non-Participating
330121700000	326	Non-Participating
330121600000	332	Non-Participating
330122000000	334	Non-Participating
060010210100	337	Non-Participating
330121300000	355	Non-Participating
360531630000	371	Non-Participating
190331210310	372	Non-Participating
330111800000	372	Non-Participating
36ROW	387	Non-Participating
330130800100 (330130810000)	388	Non-Participating

**Table 9. Parcels Within 1,500 Feet of a PV Panel (STI-PVH layout)**

<b>Parcel ID</b>	<b>Distance to PV Panel (Feet)<sup>1</sup></b>	<b>Lease Status<sup>2</sup></b>
360531570000	406	Non-Participating
330130500000	411	Non-Participating
190340100100	416	Non-Participating
360450100000	422	Non-Participating
360470500000	424	Non-Participating
330130800200	430	Non-Participating
360531490000	435	Non-Participating
360531650000	436	Non-Participating
360531420000	437	Non-Participating
060010100000	439	Non-Participating
330111000200	441	Non-Participating
360511500000	444	Non-Participating
360511400000	444	Non-Participating
360511600000	445	Non-Participating
360511700000	445	Non-Participating
360470600000	470	Non-Participating
080130110000	471	Non-Participating
360450100000 (360450200000)	472	Non-Participating
360470400000	474	Non-Participating
190340870000	484	Non-Participating
360490200000	485	Non-Participating
360450300000	486	Non-Participating
360450300000 (360450400000)	496	Non-Participating
360490100000	507	Non-Participating
190331210311	509	Non-Participating
360470700000	515	Non-Participating
360482000000	533	Non-Participating
080130120000	536	Non-Participating
190341500000	536	Non-Participating
360470300000	540	Non-Participating
360560350100	544	Non-Participating
330151200000	547	Non-Participating
330120200000	560	Non-Participating
330120300000	560	Non-Participating
360470800000	577	Non-Participating

**Table 9. Parcels Within 1,500 Feet of a PV Panel (STI-PVH layout)**

<b>Parcel ID</b>	<b>Distance to PV Panel (Feet)<sup>1</sup></b>	<b>Lease Status<sup>2</sup></b>
360531660000	578	Non-Participating
360560350200	583	Non-Participating
360470300000 (360470200000)	590	Non-Participating
330111300100	595	Non-Participating
360561000000	601	Non-Participating
360450700000 (360450500000)	607	Non-Participating
360481900000	608	Non-Participating
360511800000	610	Non-Participating
360470800000 (360470900000)	623	Non-Participating
190320910300	629	Non-Participating
190320910200	630	Non-Participating
190320910000	632	Non-Participating
360450700000 (360450600000)	632	Non-Participating
190320910100	633	Non-Participating
190331210300	634	Non-Participating
360481800000	635	Non-Participating
190320800000	636	Non-Participating
360560350300	638	Non-Participating
360490300000	641	Non-Participating
360490400000	647	Non-Participating
190340800100	653	Non-Participating
190340810000	655	Non-Participating
360511900000	660	Non-Participating
360531400000	662	Non-Participating
360450700000	667	Non-Participating
330150900000	671	Non-Participating
360450500100	678	Non-Participating
360560350400	680	Non-Participating
200420500000	688	Non-Participating
360490400000 (360490500000)	688	Non-Participating
190340200000	707	Non-Participating
360451510000	710	Non-Participating



**Table 9. Parcels Within 1,500 Feet of a PV Panel (STI-PVH layout)**

<b>Parcel ID</b>	<b>Distance to PV Panel (Feet)<sup>1</sup></b>	<b>Lease Status<sup>2</sup></b>
360512000000	710	Non-Participating
360560600000	711	Non-Participating
360531610000	716	Non-Participating
360531410000	717	Non-Participating
360531600000	721	Non-Participating
360560800000	723	Non-Participating
360531590000	724	Non-Participating
190331210100	731	Non-Participating
360490600000	736	Non-Participating
360491100000	738	Non-Participating
190341200000	751	Non-Participating
360451520000	755	Non-Participating
190340820000	761	Non-Participating
360450900000	761	Non-Participating
190341120000	763	Non-Participating
190341130000	766	Non-Participating
190341100100	768	Non-Participating
190341140000	772	Non-Participating
080130100000	783	Non-Participating
190341150000	783	Non-Participating
300160600000	785	Non-Participating
190320800300	794	Non-Participating
360451500000	796	Non-Participating
360451600000 (360450800000)	797	Non-Participating
360451200000	798	Non-Participating
360461700000 (360470100000)	800	Non-Participating
360461700000 (360461800000)	822	Non-Participating
190321000000	822	Non-Participating
190341100210	826	Non-Participating
360531300000	830	Non-Participating
360520100000	830	Non-Participating
360451600000 (360451300000)	832	Non-Participating
360451400000	836	Non-Participating

**Table 9. Parcels Within 1,500 Feet of a PV Panel (STI-PVH layout)**

<b>Parcel ID</b>	<b>Distance to PV Panel (Feet)<sup>1</sup></b>	<b>Lease Status<sup>2</sup></b>
360461700000 (360462000000)	843	Non-Participating
360531620000	846	Non-Participating
190341100200	847	Non-Participating
360461700000 (360461600000)	849	Non-Participating
190340100110	852	Non-Participating
360461700000 (360461900000)	865	Non-Participating
360451600000	869	Non-Participating
360471200000 (360471000000)	876	Non-Participating
360461500000	883	Non-Participating
360560700000	886	Non-Participating
360461700000	891	Non-Participating
190350400000	899	Non-Participating
360451700000	904	Non-Participating
190341100300	916	Non-Participating
300152000100	916	Non-Participating
190340100120	917	Non-Participating
360461200000	920	Non-Participating
360471200000 (360471100000)	922	Non-Participating
360460700000 (360461300000)	923	Non-Participating
190341210000	927	Non-Participating
360491000000	928	Non-Participating
300152000000	935	Non-Participating
360560300000	947	Non-Participating
360460900000	953	Non-Participating
360481600000	953	Non-Participating
360460700000 (360461000000)	958	Non-Participating
360461400000	964	Non-Participating
360471200000	971	Non-Participating
190340130000 (190340140000)	973	Non-Participating

**Table 9. Parcels Within 1,500 Feet of a PV Panel (STI-PVH layout)**

<b>Parcel ID</b>	<b>Distance to PV Panel (Feet)<sup>1</sup></b>	<b>Lease Status<sup>2</sup></b>
190320700000	981	Non-Participating
330151610000	985	Non-Participating
360481700000	986	Non-Participating
360460700000	990	Non-Participating
360511000000	994	Non-Participating
360461100000	998	Non-Participating
190350600000	998	Non-Participating
360481500000	1,000	Non-Participating
360510900000	1,011	Non-Participating
330151300000	1,018	Non-Participating
360471600000 (360471300000)	1,020	Non-Participating
190340830000	1,024	Non-Participating
360460800000	1,029	Non-Participating
360500200000	1,038	Non-Participating
360460600000	1,038	Non-Participating
190350500000	1,041	Non-Participating
360481400000	1,045	Non-Participating
360471400000	1,046	Non-Participating
360560500000	1,047	Non-Participating
360471600000 (360471500000)	1,052	Non-Participating
190350700000	1,057	Non-Participating
360492000000	1,067	Non-Participating
190320800100	1,072	Non-Participating
360460500000	1,072	Non-Participating
190320800100 (190320800200)	1,073	Non-Participating
360491900000	1,074	Non-Participating
360460600000 (360460300000)	1,076	Non-Participating
360471600000	1,081	Non-Participating
360510800000	1,084	Non-Participating
190330300200	1,097	Non-Participating
360491800000	1,098	Non-Participating
360471700000	1,102	Non-Participating
360481300000	1,106	Non-Participating

**Table 9. Parcels Within 1,500 Feet of a PV Panel (STI-PVH layout)**

<b>Parcel ID</b>	<b>Distance to PV Panel (Feet)<sup>1</sup></b>	<b>Lease Status<sup>2</sup></b>
190330300300	1,106	Non-Participating
360460400000	1,109	Non-Participating
190340300200	1,114	Non-Participating
360460600000 (360460200000)	1,114	Non-Participating
360500300000	1,129	Non-Participating
360510700000	1,131	Non-Participating
360500100000	1,131	Non-Participating
190340130000	1,135	Non-Participating
360460100000	1,146	Non-Participating
360481200000	1,152	Non-Participating
360471900000	1,157	Non-Participating
360510500000	1,159	Non-Participating
360452000000	1,166	Non-Participating
190341300000	1,172	Non-Participating
360531550000	1,174	Non-Participating
360491600000	1,177	Non-Participating
360510600000	1,177	Non-Participating
360500400000	1,181	Non-Participating
330161810000	1,181	Non-Participating
330161710000	1,182	Non-Participating
330161830000	1,188	Non-Participating
360472000000	1,191	Non-Participating
360531430000	1,193	Non-Participating
360481100000	1,198	Non-Participating
330161720000	1,201	Non-Participating
360452000000 (360451900000)	1,207	Non-Participating
360500500000	1,207	Non-Participating
360560900000	1,212	Non-Participating
360491400000	1,212	Non-Participating
360471800000	1,213	Non-Participating
360480200000	1,225	Non-Participating
360491500000 (360491700000)	1,235	Non-Participating
360500600000	1,235	Non-Participating
360531450000	1,245	Non-Participating

**Table 9. Parcels Within 1,500 Feet of a PV Panel (STI-PVH layout)**

<b>Parcel ID</b>	<b>Distance to PV Panel (Feet)<sup>1</sup></b>	<b>Lease Status<sup>2</sup></b>
360471800000 (360480100000)	1,245	Non-Participating
360452000000 (360451800000)	1,248	Non-Participating
360491200000	1,248	Non-Participating
360531440000	1,253	Non-Participating
360491500000	1,268	Non-Participating
360480300000	1,273	Non-Participating
190320900000	1,289	Non-Participating
360521800000	1,295	Non-Participating
360491500000 (360500700000)	1,301	Non-Participating
360491500000 (360491300000)	1,303	Non-Participating
330111010000	1,309	Non-Participating
360560400000	1,310	Non-Participating
360480400000	1,310	Non-Participating
190340130000 (190340120000)	1,311	Non-Participating
190350800000	1,313	Non-Participating
360500800000	1,333	Non-Participating
190340300100	1,338	Non-Participating
360521600000	1,339	Non-Participating
190340850000	1,340	Non-Participating
360491500000 (360521700000)	1,348	Non-Participating
360480500000	1,348	Non-Participating
190320800400	1,352	Non-Participating
330151500000	1,357	Non-Participating
360481000000	1,358	Non-Participating
190340520100	1,364	Non-Participating
360500900000	1,366	Non-Participating
330131700000	1,372	Non-Participating
360501500000	1,374	Non-Participating
360521400000	1,378	Non-Participating
330111000210	1,390	Non-Participating

**Table 9. Parcels Within 1,500 Feet of a PV Panel (STI-PVH layout)**

Parcel ID	Distance to PV Panel (Feet) <sup>1</sup>	Lease Status <sup>2</sup>
360491500000 (360521500000)	1,391	Non-Participating
330131000000	1,395	Non-Participating
190340500100	1,397	Non-Participating
360501400000	1,397	Non-Participating
360480900000	1,397	Non-Participating
190340120100	1,402	Non-Participating
360520900000	1,410	Non-Participating
360501300000	1,421	Non-Participating
330151400000	1,427	Non-Participating
360491500000 (360521300000)	1,429	Non-Participating
080130200000	1,438	Non-Participating
360480800000	1,440	Non-Participating
360531530000	1,447	Non-Participating
330110400000	1,449	Non-Participating
360521100000	1,451	Non-Participating
300160800100	1,459	Non-Participating
300160800000	1,463	Non-Participating
360521000000	1,469	Non-Participating
360480700000	1,472	Non-Participating
190260400000	1,475	Non-Participating
360501200000	1,484	Non-Participating
360521200000	1,488	Non-Participating
190340110000	1,494	Non-Participating

1. Distances that equal zero represent parcels that contain solar arrays.
2. Landowners with parcels anticipated to be under a lease or easement agreement at the time of Facility construction are identified as participating for the purposes of this Application.

## Structures and Property Lines within 250 Feet of Facility Components

Table 10 and Table 11 identify existing structures within 250 feet of a Facility component and the lease status of the underlying parcel (i.e., participating or non-participating). For the ATI layout, there are 15 structures within 250 feet of Facility components, an increase of six from the Initial Application layout. For the STI-PVH layout, there are 11 structures within 250 feet of Facility components, an increase of two from the Initial Application layout. These increases in the number

of structures within 250 feet of Facility components is largely due to the temporary BMP ponds present in the alternative layouts.

**Table 10. Structures within 250 Feet of Facility Components (ATI layout)**

Structure Type	Distance (Feet)	Facility Component	Lease Status
Residence	90 250	Access Road Laydown Yard	Participating
Residence	172	BMP Pond	Participating
Residence	192 206	Culvert Access Road	Participating
Residence	224 246	Laydown Yard Collection Line	Participating
Residence	238	Collection Line	Participating
Residence	242	BMP Pond	Participating
Residence	155	Transmission Line	Non-Participating
Residence	159 237	Collection Line BMP Pond	Non-Participating
Residence	199	Collection Line	Non-Participating
Residence	218	BMP Pond	Non-Participating
Residence	219	BMP Pond	Non-Participating
Residence	235	BMP Pond	Non-Participating
Commercial	237	BMP Pond	Non-Participating
Residence	241	Collection Line	Non-Participating
Residence	250	Access Road	Non-Participating

**Table 11. Structures within 250 Feet of Facility Components (STI-PVH layout)**

Structure Type	Distance (Feet)	Facility Component	Lease Status
Residence	90 250	Access Road Laydown Yard	Participating
Residence	192 206	Culvert Access Road	Participating
Residence	224 241 245	Laydown Yard Access Road Collection Line	Participating
Residence	226	BMP Pond	Participating
Residence	239	Collection Line	Participating
Residence	242	BMP Pond	Participating
Residence	155	Transmission Line	Non-Participating
Residence	162	Collection Line	Non-Participating

**Table 10. Structures within 250 Feet of Facility Components (ATI layout)**

Structure Type	Distance (Feet)	Facility Component	Lease Status
Residence	199	Collection Line	Non-Participating
Residence	243	Collection Line	Non-Participating
Residence	250	Access Road	Non-Participating

Table 12 and Table 13 identify parcels within 250 feet of a Facility component and the lease status of the parcel (i.e., participating or non-participating). For the ATI layout, there are 110 parcels within 250 feet of a Facility component. This total includes 63 parcels that are within 250 feet of multiple Facility components. Distances between property lines and Facility components remain similar between the Initial Application layout and the ATI layout. For the STI-PVH layout, there are 106 parcels within 250 feet of a Facility component. This total includes 65 parcels that are within 250 feet of multiple Facility components. Distances between property lines and Facility components remain similar between the Initial Application layout and the STI-PVH layout.

**Table 12. Property Lines within 250 Feet of Facility Components (ATI layout)**

Parcel ID	Distance <sup>1</sup> (Feet)	Facility Component	Lease Status <sup>2</sup>
190331200100	0	Collection Line	Participating
190400500000	0	Collection Line	Participating
190331100000	0	Collection Line	Participating
190331300000	0	Collection Line	Participating
330161200000	0	BMP Pond	Participating
190331700000	0	Access Road	Participating
	0	Collection Line	
	0	Inverter	
330161100000	0	Access Road	Participating
	0	Collection Line	
	0	Inverter	
	0	Permanent Berm	
190331400000	0	Access Road	Participating
	0	BMP Pond	
	0	Collection Line	
	0	Inverter	
	0	Permanent Berm	



Table 12. Property Lines within 250 Feet of Facility Components (ATI layout)

Parcel ID	Distance <sup>1</sup> (Feet)	Facility Component	Lease Status <sup>2</sup>
190331600000	0 0 0 0 0	Access Road BMP Pond Collection Line Inverter Permanent Berm	Participating
330130600000	0 0 0 0 0	Access Road BMP Pond Collection Line Inverter Permanent Berm	Participating
330150800200	0 0 0 0 0	Access Road BMP Pond Collection Line Inverter Permanent Berm	Participating
330161600000	0 0 0 0 0	Access Road BMP Pond Collection Line Inverter Permanent Berm	Participating
190341000000	0 0 0 0 0 0	Access Road BMP Pond Collection Line Inverter Permanent Berm Transmission Line	Participating
330112000000	0 0 0 0 0 0	Access Road BMP Pond Collection Line Inverter Laydown Yard Permanent Berm	Participating
200420300000	0 0 0 0 0 0 0	Access Road BMP Pond Collection Line Culvert Inverter Laydown Yard Permanent Berm	Participating

Table 12. Property Lines within 250 Feet of Facility Components (ATI layout)

Parcel ID	Distance <sup>1</sup> (Feet)	Facility Component	Lease Status <sup>2</sup>
330111100000	0	Access Road	Participating
	0	BMP Pond	
	0	Collection Line	
	0	Culvert	
	0	Inverter	
	0	Laydown Yard	
	0	Permanent Berm	
330130900100	0	Access Road	Participating
	0	BMP Pond	
	0	Collection Line	
	0	Culvert	
	0	Inverter	
	0	Laydown Yard	
	0	Permanent Berm	
330150800300	0	Access Road	Participating
	0	BMP Pond	
	0	Collection Line	
	0	Culvert	
	0	Inverter	
	0	Laydown Yard	
	0	Permanent Berm	
190331900000	0	Access Road	Participating
	0	BMP Pond	
	0	Collection Line	
	0	Culvert	
	0	Inverter	
	0	Laydown Yard	
	0	Permanent Berm	
	0	POI Substation	
	0	Transmission Line	
330160800100	0	Access Road	Participating
	0	BMP Pond	
	0	Collection Line	
	0	Collection Substation	
	0	Culvert	
	0	Inverter	
	0	O&M Building	
	0	Permanent Berm	
	0	Transmission Line	
	65	Laydown Yard	

Table 12. Property Lines within 250 Feet of Facility Components (ATI layout)

Parcel ID	Distance <sup>1</sup> (Feet)	Facility Component	Lease Status <sup>2</sup>
330160700000	0 0 0 0 0 0 0 127	Access Road BMP Pond Collection Line Culvert Laydown Yard O&M Building Transmission Line Inverter	Participating
330161500000	0 0 0 0 0 190	Access Road Collection Line Culvert Laydown Yard Permanent Berm BMP Pond	Participating
330161000000	0 0 0 0 47 129 168	Access Road Collection Line Inverter Permanent Berm Culvert BMP Pond Laydown Yard	Participating
330161300000	0 0 0 0 69 243	Access Road BMP Pond Collection Line Inverter Permanent Berm Laydown Yard	Participating
190332000000	0 0 0 0 8 18	Access Road Collection Line Inverter Transmission Line BMP Pond Permanent Berm	Participating
190341000100	0 0 0 12 23 92 106	Collection Line Permanent Berm Transmission Line Access Road Culvert BMP Pond Laydown Yard	Participating

Table 12. Property Lines within 250 Feet of Facility Components (ATI layout)

Parcel ID	Distance <sup>1</sup> (Feet)	Facility Component	Lease Status <sup>2</sup>
190331500000	0 0 0 22 123 125 169 237	Access Road BMP Pond Collection Line Transmission Line Laydown Yard Permanent Berm Inverter Culvert	Participating
330161400000	0 0 0 41 198	Access Road Collection Line Inverter BMP Pond Permanent Berm	Participating
190341400000	0 0 139 183 246	Access Road Laydown Yard Collection Line Permanent Berm BMP Pond	Participating
330150800100	0 0 148	BMP Pond Permanent Berm Collection Line	Participating
330130900300	0 0 52 98	Access Road Laydown Yard Culvert BMP Pond	Participating
330130700000	0 132	Collection Line BMP Pond	Participating
330130650000	0 143 159	Collection Line Permanent Berm BMP Pond	Participating
360531510000	0 162	Laydown Yard Access Road	Participating
330160800000	0 28 62 96 120 124	Collection Line BMP Pond Culvert Collection Substation Access Road Permanent Berm	Participating

**Table 12. Property Lines within 250 Feet of Facility Components (ATI layout)**

<b>Parcel ID</b>	<b>Distance<sup>1</sup> (Feet)</b>	<b>Facility Component</b>	<b>Lease Status<sup>2</sup></b>
330160900000	0 88 111	Collection Line BMP Pond Permanent Berm	Participating
330120100000	108	Collection Line	Participating
330111400800	115	BMP Pond	Participating
190331410000	107 126 147 172	Collection Line Access Road Permanent Berm BMP Pond	Participating
330151900000	116 122 148	Permanent Berm BMP Pond Collection Line	Participating
360531460000	117	BMP Pond	Participating
360531470000	120	BMP Pond	Participating
360531480000	123	BMP Pond	Participating
190340300000	148	Transmission Line	Participating
330161300100	161 162	Access Road Collection Line	Participating
190331900300	173	Transmission Line	Participating
330111200000	219	BMP Pond	Participating
190331900200	231	Transmission Line	Participating
200420100000	235 246	BMP Pond Permanent Berm	Participating
330111610000	28 159	Access Road Laydown Yard	Participating
330111700100	57 116 118	Collection Line BMP Pond Permanent Berm	Participating
190340100000	83 113 219	Transmission Line Access Road BMP Pond	Participating
190340400000	84 219	Transmission Line BMP Pond	Participating

Table 12. Property Lines within 250 Feet of Facility Components (ATI layout)

Parcel ID	Distance <sup>1</sup> (Feet)	Facility Component	Lease Status <sup>2</sup>
330111900000	2	Access Road	Non-Participating
	18	Culvert	
	34	Collection Line	
	64	Transmission Line	
	98	Laydown Yard	
	101	Collection Substation	
	101	O&M Building	
	110	BMP Pond	
	191	Permanent Berm	
190331210110	10	Culvert	Non-Participating
	12	Access Road	
	102	Laydown Yard	
	124	Permanent Berm	
	138	Collection Line	
	144	BMP Pond	
330130800000	10	Collection Line	Non-Participating
	48	Permanent Berm	
	79	BMP Pond	
190320800000	14	Access Road	Non-Participating
	41	Culvert	
	127	Laydown Yard	
	161	POI Substation	
330151000000	19	Access Road	Non-Participating
	36	Culvert	
	104	Permanent Berm	
	110	BMP Pond	
330170700000	142	Collection Line	Non-Participating
	21	Collection Line	
330151100000	23	Access Road	Non-Participating
	32	Culvert	
	103	Permanent Berm	
	109	BMP Pond	
360450100000	28	Access Road	Non-Participating
	213	Laydown Yard	
190331210300	27	Collection Line	Non-Participating
330120600000	35	Collection Line	Non-Participating
330130400000	38	Collection Line	Non-Participating
	60	Access Road	
	126	BMP Pond	

Table 12. Property Lines within 250 Feet of Facility Components (ATI layout)

Parcel ID	Distance <sup>1</sup> (Feet)	Facility Component	Lease Status <sup>2</sup>
330130500000	37 129	Collection Line BMP Pond	Non-Participating
330161820000	44 128	Permanent Berm BMP Pond	Non-Participating
330161700000	44 151	Permanent Berm BMP Pond	Non-Participating
330161830000 (330161800000)	44 63	Permanent Berm BMP Pond	Non-Participating
330120700100	48 110	Access Road Collection Line	Non-Participating
190340100130	49 97 244	Access Road Transmission Line BMP Pond	Non-Participating
330111300100	55	Collection Line	Non-Participating
330120700000	75	Collection Line	Non-Participating
360450100000 (360450200000)	78	Access Road	Non-Participating
190331210200	84 135 143 144 181 202	Culvert Collection Line Access Road BMP Pond Laydown Yard Permanent Berm	Non-Participating
330111300000	106	Collection Line	Non-Participating
330120200000	108	Collection Line	Non-Participating
330120300000	108	Collection Line	Non-Participating
330110600000	121	Laydown Yard	Non-Participating
190331210311	124	Collection Line	Non-Participating
360531570000	124	BMP Pond	Non-Participating
360531490000	126	BMP Pond	Non-Participating
360531420000	128	BMP Pond	Non-Participating
330110500000	141	BMP Pond	Non-Participating
360450300000	144	Access Road	Non-Participating
360511400000	160	BMP Pond	Non-Participating
360511500000	162	BMP Pond	Non-Participating
360531650000	162	BMP Pond	Non-Participating
360511600000	163	BMP Pond	Non-Participating
360511700000	163	BMP Pond	Non-Participating
190260410000	167	Laydown Yard	Non-Participating

**Table 12. Property Lines within 250 Feet of Facility Components (ATI layout)**

<b>Parcel ID</b>	<b>Distance<sup>1</sup> (Feet)</b>	<b>Facility Component</b>	<b>Lease Status<sup>2</sup></b>
200420400000	179	BMP Pond	Non-Participating
360550200000	181	Laydown Yard	Non-Participating
330111000200	181	BMP Pond	Non-Participating
330111800000	183	BMP Pond	Non-Participating
360490200000	191	BMP Pond	Non-Participating
360450300000 (360450400000)	194	Access Road	Non-Participating
360470500000	210	Access Road	Non-Participating
190340100100	213	Access Road	Non-Participating
360470400000	222	Access Road	Non-Participating
360490100000	222	BMP Pond	Non-Participating
200420200000	234	BMP Pond	Non-Participating
330151200000	100 158	Culvert Access Road	Non-Participating
190330900000	102 105 157 165 202	Laydown Yard Culvert Permanent Berm Access Road Collection Line	Non-Participating
330120400000	104 170 185 235	Permanent Berm Collection Line Access Road BMP Pond	Non-Participating
330130800100	107 131	Collection Line Permanent Berm	Non-Participating
330120500000	107 236	Collection Line Access Road	Non-Participating



**Table 12. Property Lines within 250 Feet of Facility Components (ATI layout)**

Parcel ID	Distance <sup>1</sup> (Feet)	Facility Component	Lease Status <sup>2</sup>
190331900100	109 125 210	Transmission Line Access Road BMP Pond	Non-Participating
330111700000	116 118 220	BMP Pond Permanent Berm Collection Line	Non-Participating
360531520000	121 135 185	BMP Pond Access Road Laydown Yard	Non-Participating
190331210310	133 234	Collection Line BMP Pond	Non-Participating

1. Distances that equal zero represent parcels that contain Facility components.

2. Landowners with parcels anticipated to be under a lease or easement agreement at the time of Facility construction are identified as participating for the purposes of this Application.

**Table 13. Property Lines within 250 Feet of Facility Components (STI-PVH layout)**

Parcel ID	Distance <sup>1</sup> (Feet)	Facility Component	Lease Status <sup>2</sup>
190331100000	0	Collection Line	Participating
190331200100	23	Collection Line	Participating
190331300000	0 205	Collection Line BMP Pond	Participating
190331400000	0 0 0 0 0	Access Road BMP Pond Collection Line Inverter Permanent Berm	Participating
190331410000	108 126 147 153	Collection Line Access Road Permanent Berm BMP Pond	Participating
190331500000	0 0 0 22 123 125 186 237	Access Road BMP Pond Collection Line Transmission Line Laydown Yard Permanent Berm Inverter Culvert	Participating

Table 13. Property Lines within 250 Feet of Facility Components (STI-PVH layout)

Parcel ID	Distance <sup>1</sup> (Feet)	Facility Component	Lease Status <sup>2</sup>
190331600000	0	Access Road	Participating
	0	BMP Pond	
	0	Collection Line	
	0	Permanent Berm	
190331700000	0	Access Road	Participating
	0	Collection Line	
	0	Inverter	
190331900000	0	Access Road	Participating
	0	BMP Pond	
	0	Collection Line	
	0	Culvert	
	0	Inverter	
	0	Laydown Yard	
	0	Permanent Berm	
	0	POI Substation	
	0	Transmission Line	
190331900200	231	Transmission Line	Participating
190331900300	173	Transmission Line	Participating
190332000000	0	Access Road	Participating
	0	Collection Line	
	0	Inverter	
	0	Transmission Line	
	14	BMP Pond	
	18	Permanent Berm	
190340100000	83	Transmission Line	Participating
	113	Access Road	
	219	BMP Pond	
190340300000	148	Transmission Line	Participating
190340400000	84	Transmission Line	Participating
	219	BMP Pond	
190340900000	232	BMP Pond	Participating
190341000000	0	Access Road	Participating
	0	BMP Pond	
	0	Collection Line	
	0	Inverter	
	0	Permanent Berm	
	0	Transmission Line	

Table 13. Property Lines within 250 Feet of Facility Components (STI-PVH layout)

Parcel ID	Distance <sup>1</sup> (Feet)	Facility Component	Lease Status <sup>2</sup>
190341000100	0	Collection Line	Participating
	0	Permanent Berm	
	0	Transmission Line	
	12	Access Road	
	23	Culvert	
	92	BMP Pond	
	106	Laydown Yard	
190341400000	0	Access Road	Participating
	0	Laydown Yard	
	138	Collection Line	
	183	Permanent Berm	
	227	BMP Pond	
190400500000	0	Collection Line	Participating
	238	Inverter	
200420100000	214	BMP Pond	Participating
	246	Permanent Berm	
200420300000	0	Access Road	Participating
	0	BMP Pond	
	0	Collection Line	
	0	Culvert	
	0	Inverter	
	0	Laydown Yard	
	0	Permanent Berm	
330111100000	0	Access Road	Participating
	0	BMP Pond	
	0	Collection Line	
	0	Culvert	
	0	Inverter	
	0	Laydown Yard	
	0	Permanent Berm	
330111200000	219	BMP Pond	Participating
330111400800	115	BMP Pond	Participating
330111610000	28	Access Road	Participating
	159	Laydown Yard	
330111700100	58	Collection Line	Participating
	106	BMP Pond	
	118	Permanent Berm	

Table 13. Property Lines within 250 Feet of Facility Components (STI-PVH layout)

Parcel ID	Distance <sup>1</sup> (Feet)	Facility Component	Lease Status <sup>2</sup>
330112000000	0	Access Road	Participating
	0	BMP Pond	
	0	Collection Line	
	0	Inverter	
	0	Laydown Yard	
	0	Permanent Berm	
330120100000	111	Collection Line	Participating
330130600000	0	Access Road	Participating
	0	BMP Pond	
	0	Collection Line	
	0	Inverter	
	0	Permanent Berm	
330130650000	0	Collection Line	Participating
	115	BMP Pond	
	143	Permanent Berm	
330130700000	0	Collection Line	Participating
330130900100	0	Access Road	Participating
	0	BMP Pond	
	0	Collection Line	
	0	Culvert	
	0	Inverter	
	0	Laydown Yard	
	0	Permanent Berm	
330130900300	0	Access Road	Participating
	0	Laydown Yard	
	52	Culvert	
	92	BMP Pond	
330150800100	0	BMP Pond	Participating
	0	Permanent Berm	
	64	Collection Line	
330150800200	0	Access Road	Participating
	0	BMP Pond	
	0	Collection Line	
	0	Inverter	
	0	Permanent Berm	

Table 13. Property Lines within 250 Feet of Facility Components (STI-PVH layout)

Parcel ID	Distance <sup>1</sup> (Feet)	Facility Component	Lease Status <sup>2</sup>
330150800300	0	Access Road	Participating
	0	BMP Pond	
	0	Collection Line	
	0	Culvert	
	0	Inverter	
	0	Laydown Yard	
	0	Permanent Berm	
330151900000	64	Collection Line	Participating
	116	Permanent Berm	
330160700000	0	Access Road	Participating
	0	BMP Pond	
	0	Collection Line	
	0	Culvert	
	0	Laydown Yard	
	0	O&M	
	0	Transmission Line	
330160800000	79	Inverter	Participating
	0	Collection Line	
	17	BMP Pond	
	62	Culvert	
	96	Collection Substation	
	120	Access Road	
	124	Permanent Berm	
330160800100	0	Access Road	Participating
	0	BMP Pond	
	0	Collection Line	
	0	Collection Substation	
	0	Culvert	
	0	Inverter	
	0	O&M	
	0	Permanent Berm	
	0	Transmission Line	
	65	Laydown Yard	
330160900000	0	Collection Line	Participating
	85	BMP Pond	
	111	Permanent Berm	

Table 13. Property Lines within 250 Feet of Facility Components (STI-PVH layout)

Parcel ID	Distance <sup>1</sup> (Feet)	Facility Component	Lease Status <sup>2</sup>
330161000000	0	Access Road	Participating
	0	Collection Line	
	0	Permanent Berm	
	16	Inverter	
	47	Culvert	
	126	Laydown Yard	
	157	BMP Pond	
330161100000	0	Access Road	Participating
	0	Collection Line	
	0	Inverter	
	0	Permanent Berm	
330161200000	0	BMP Pond	Participating
	250	Inverter	
330161300000	0	Access Road	Participating
	0	BMP Pond	
	0	Collection Line	
	0	Inverter	
	69	Permanent Berm	
	243	Laydown Yard	
330161300100	145	BMP Pond	Participating
	165	Collection Line	
	173	Access Road	
330161400000	0	Access Road	Participating
	0	Collection Line	
	0	Inverter	
	51	BMP Pond	
	198	Permanent Berm	
330161500000	0	Access Road	Participating
	0	Collection Line	
	0	Culvert	
	0	Laydown Yard	
	0	Permanent Berm	
	193	BMP Pond	
330161600000	0	Access Road	Participating
	0	BMP Pond	
	0	Collection Line	
	0	Inverter	
	0	Permanent Berm	
360531460000	117	BMP Pond	Participating
360531470000	120	BMP Pond	Participating

Table 13. Property Lines within 250 Feet of Facility Components (STI-PVH layout)

Parcel ID	Distance <sup>1</sup> (Feet)	Facility Component	Lease Status <sup>2</sup>
360531480000	123	BMP Pond	Participating
360531510000	0 162	Laydown Yard Access Road	Participating
190311900000	2	Inverter	Non-Participating
330111900000	2 18 37 64 98 101 101 104 191	Access Road Culvert Collection Line Transmission Line Laydown Yard Collection Substation O&M BMP Pond Permanent Berm	Non-Participating
330130800000	8 48 55	Collection Line Permanent Berm BMP Pond	Non-Participating
190331210110	10 12 106 124 131 145	Culvert Access Road Laydown Yard Permanent Berm Collection Line BMP Pond	Non-Participating
330170700000	10	Collection Line	Non-Participating
190320800000	14 41 127 161	Access Road Culvert Laydown Yard POI Substation	Non-Participating
330151100000	23 32 103	Access Road Culvert Permanent Berm	Non-Participating
360450100000	28 213	Access Road Laydown Yard	Non-Participating
330151000000	30 37 59 104	Access Road Culvert Collection Line Permanent Berm	Non-Participating
330111300100	36	Collection Line	Non-Participating
330120600000	38	Collection Line	Non-Participating
330120700100	38 113	Access Road Collection Line	Non-Participating

**Table 13. Property Lines within 250 Feet of Facility Components (STI-PVH layout)**

Parcel ID	Distance <sup>1</sup> (Feet)	Facility Component	Lease Status <sup>2</sup>
330130500000	40	Collection Line	Non-Participating
330130400000	41 74 250	Collection Line Access Road BMP Pond	Non-Participating
330161700000	44 164	Permanent Berm BMP Pond	Non-Participating
330161820000	44 141	Permanent Berm BMP Pond	Non-Participating
330161830000 (330161800000)	44 54	Permanent Berm BMP Pond	Non-Participating
190340100130	49 97 244	Access Road Transmission Line BMP Pond	Non-Participating
190331210300	59	Collection Line	Non-Participating
330120700000	76	Collection Line	Non-Participating
360450100000 (360450200000)	78	Access Road	Non-Participating
330111300000	79	Collection Line	Non-Participating
190331210200	84 131 143 144 183 202	Culvert Collection Line Access Road BMP Pond Laydown Yard Permanent Berm	Non-Participating
330151200000	100 158	Culvert Access Road	Non-Participating
330120400000	104 124 171 173	Permanent Berm BMP Pond Access Road Collection Line	Non-Participating
190330900000	105 108 157 165	Culvert Laydown Yard Permanent Berm Access Road	Non-Participating
330111700000	108 118 221	BMP Pond Permanent Berm Collection Line	Non-Participating
190331900100	109 125 210	Transmission Line Access Road BMP Pond	Non-Participating



**Table 13. Property Lines within 250 Feet of Facility Components (STI-PVH layout)**

Parcel ID	Distance <sup>1</sup> (Feet)	Facility Component	Lease Status <sup>2</sup>
330120500000	110 248	Collection Line Access Road	Non-Participating
330130800100	110 131	Collection Line Permanent Berm	Non-Participating
330120200000	111	Collection Line	Non-Participating
330120300000	111	Collection Line	Non-Participating
330110600000	121	Laydown Yard	Non-Participating
360531490000	126	BMP Pond	Non-Participating
360531420000	128	BMP Pond	Non-Participating
190331210310	130 234	Collection Line BMP Pond	Non-Participating
190331210311	130	Collection Line	Non-Participating
200420400000	133	BMP Pond	Non-Participating
360531520000	135 161 185 214	Access Road BMP Pond Laydown Yard Collection Line	Non-Participating
330110500000	141	BMP Pond	Non-Participating
360450300000	144	Access Road	Non-Participating
330111800000	163	BMP Pond	Non-Participating
190260410000	178	Laydown Yard	Non-Participating
330111000200	181	BMP Pond	Non-Participating
360550200000	181	Laydown Yard	Non-Participating
360450300000 (360450400000)	194 176 245	Access Road Laydown Yard BMP Pond	Non-Participating
360470500000	210	Access Road	Non-Participating
200420200000	211	BMP Pond	Non-Participating
190340100100	213	Access Road	Non-Participating
360470400000	222	Access Road	Non-Participating
190340860000	227	BMP Pond	Non-Participating
360531570000	249	BMP Pond	Non-Participating

1. Distances that equal zero represent parcels that contain Facility components.

2. Landowners with parcels anticipated to be under a lease or easement agreement at the time of Facility construction are identified as participating for the purposes of this Application.

## Access Driveway Locations

Access driveways were generally kept at similar distances from non-participating residences as in the Initial Application layout. As shown in Table 14, the nearest driveway to a non-participating

residence in the either of the alternative layouts is 464 feet, while in the Initial Application layout the nearest driveway was 77 feet from a non-participating residence. The average distance from a driveway to an adjacent, non-participating residence has increased in the alternative layouts, in comparison to the Initial Application layout. The alternative layouts each have 16 access driveways, an increase from the 10 access driveways in the Initial Application layout. This increase is due to the addition of two access driveways at the collection substation and a second access driveway at the POI substation. Additionally, there are two temporary access driveways, which will be removed after construction, necessary to access the two temporary laydown yards not otherwise accessible by permanent access roads.

**Table 14. Comparison of Access Points/Driveways**

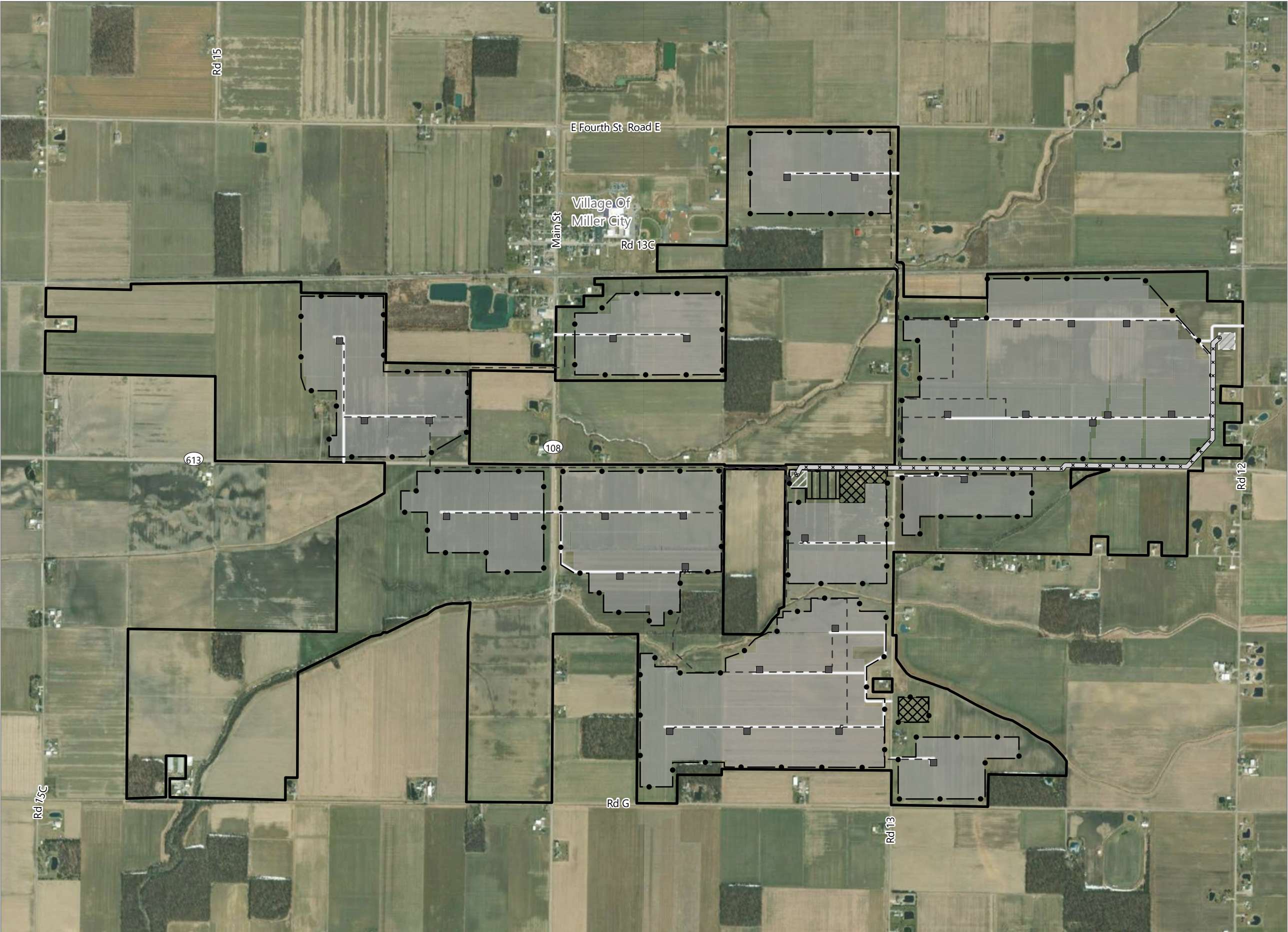
Layout Version	Number of Access Points	Nearest Distance to Adjacent, Non-Participating Residence (Feet) <sup>1</sup>	Average Distance to Adjacent, Non-Participating Residences (Feet) <sup>1</sup>
Initial Application layout	10	77	1,233
ATI layout	16	464	1,306
STI-PVH layout	16	464	1,310

1. As measured from the approximate center of the driveway where it meets the edge of the road pavement, to the approximate center of the residence

# Figures



Figure 1. Initial Application Layout Components



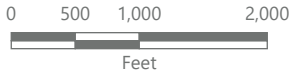
**Powell Creek Solar**

Palmer and Liberty Townships,  
Putnam County, Ohio

*Layout Comparison*

**Initial Layout**

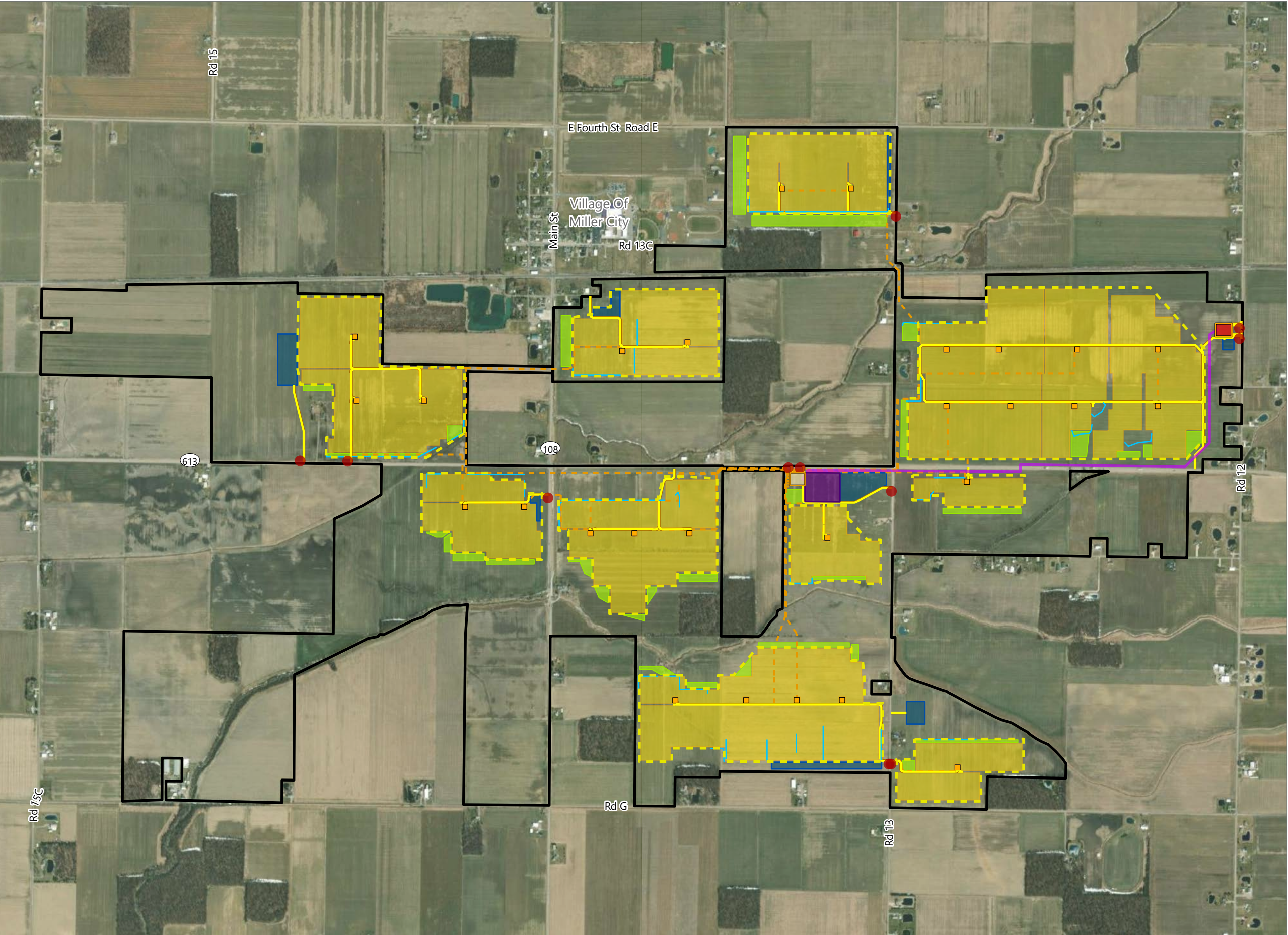
- Initial Inverter
- - - Initial Collection Line
- Initial Transmission Line
- Initial Access Road
- Initial Fenceline
- Initial Laydown Yard
- Initial O&M Building
- Initial POI Substation
- Initial Collection Substation
- Initial PV Panel Area
- Project Area



Prepared October 13, 2022  
Basemap: Esri "World Imagery" map service



Figure 2. ATI Layout Components

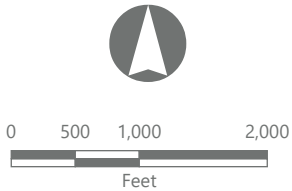


Powell Creek Solar

Palmer and Liberty Townships,  
Putnam County, Ohio

Layout Comparison

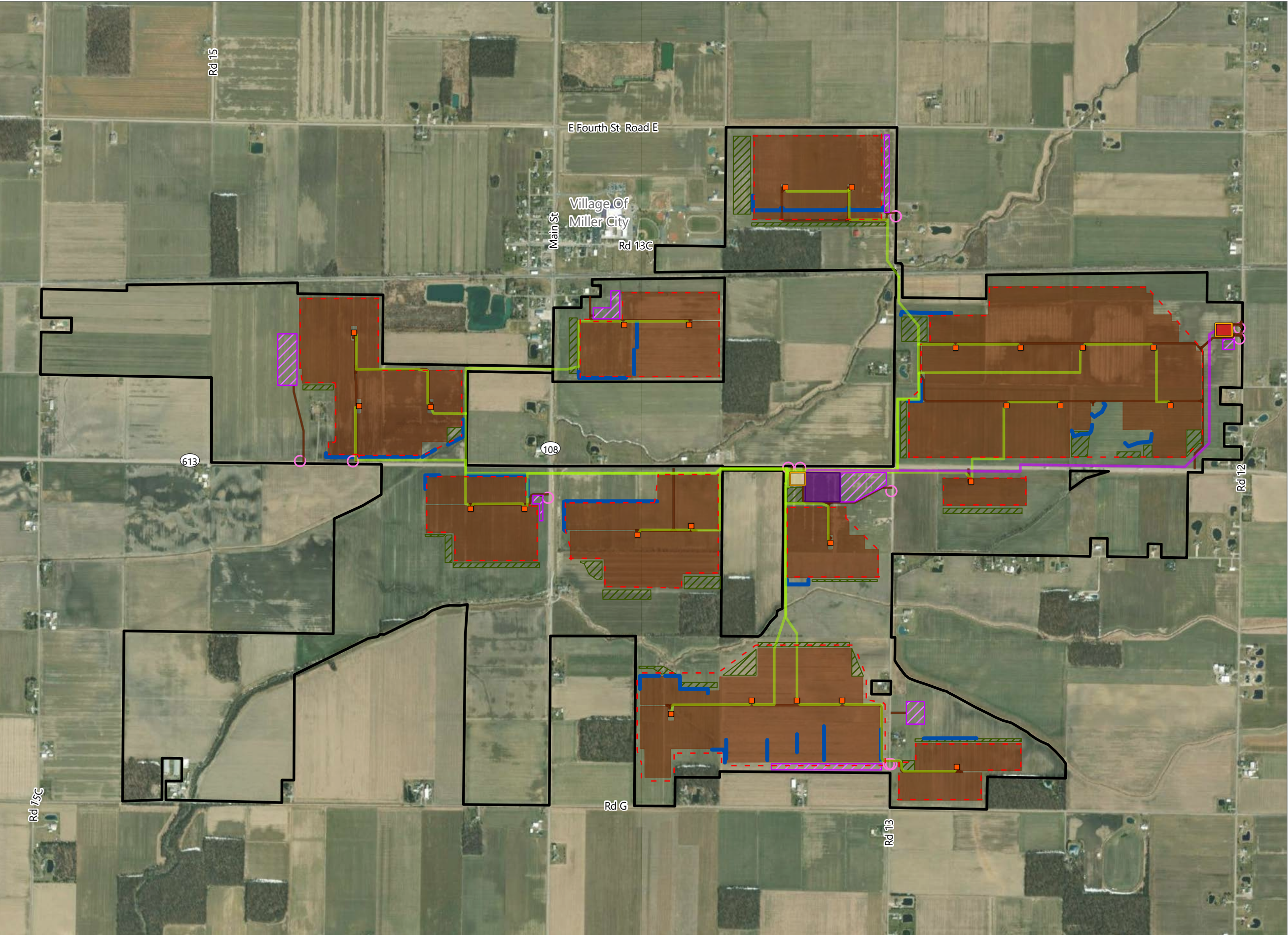
- ATI Layout
- ATI Inverter
  - ATI Culvert
  - ATI Collection Line
  - Transmission Line
  - ATI Access Road
  - ATI Fenceline
  - ATI Permanent Berm
  - ATI BMP Pond
  - ATI Laydown Yard
  - O&M Building
  - POI Substation
  - Collection Substation
  - ATI PV Panel Area
  - Project Area



Prepared October 13, 2022  
Basemap: Esri "World Imagery" map service



Figure 3. STI-PVH Layout Components

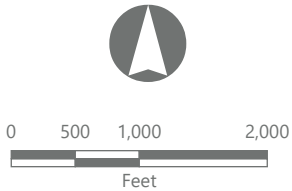


**Powell Creek Solar**

Palmer and Liberty Townships,  
Putnam County, Ohio

*Layout Comparison*

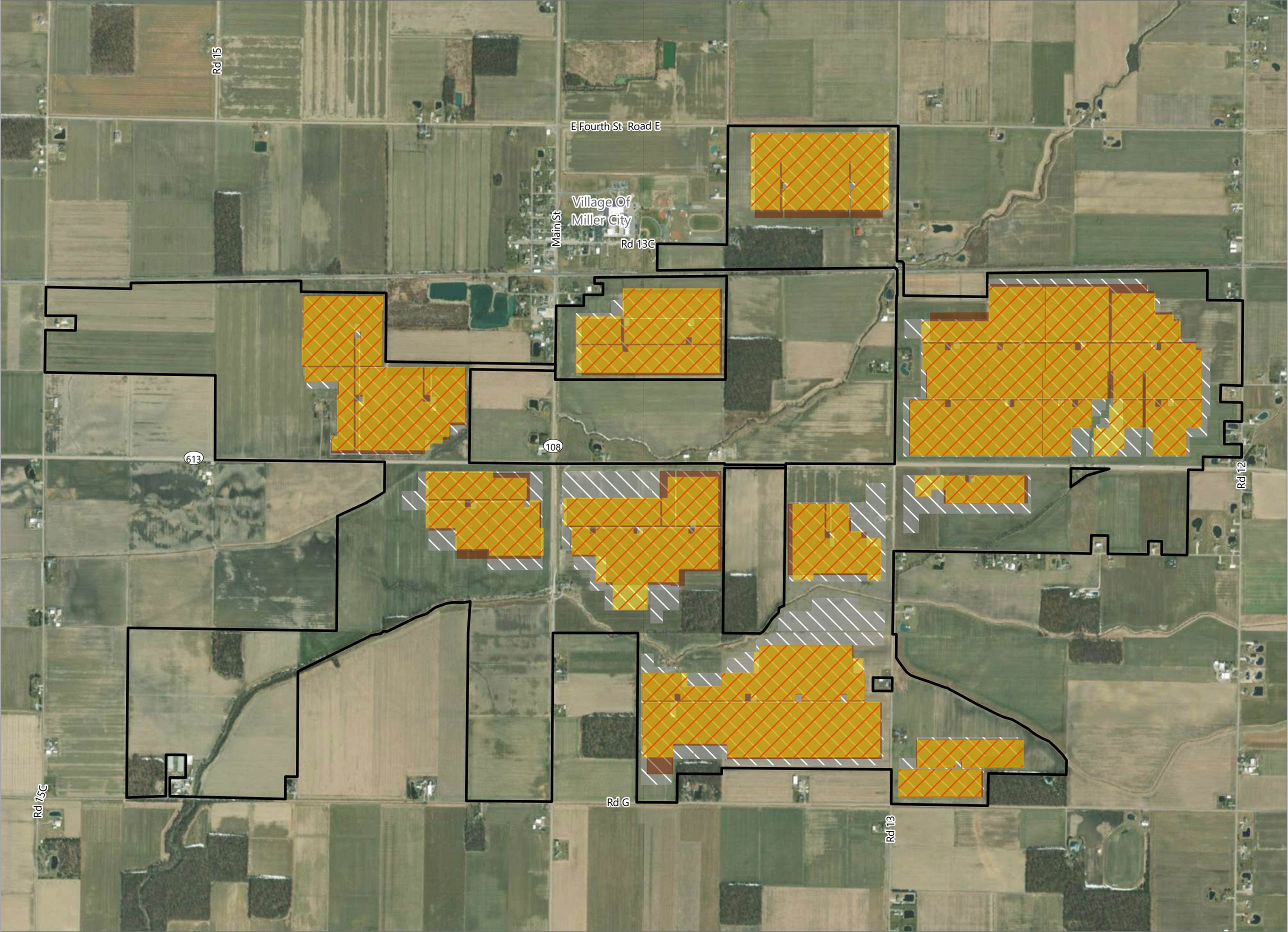
- STI-PVH Layout**
- STI-PVH Inverter
  - STI-PVH Culvert
  - STI-PVH Collection Line
  - Transmission Line
  - STI-PVH Access Road
  - STI-PVH Fenceline
  - STI-PVH Permanent Berm
  - STI-PVH BMP Pond
  - STI-PVH Laydown Yard
  - O&M Building
  - POI Substation
  - Collection Substation
  - STI-PVH PV Panel Area
  - Project Area



Prepared October 13, 2022  
Basemap: Esri "World Imagery" map service



Figure 4. PV Panel Areas

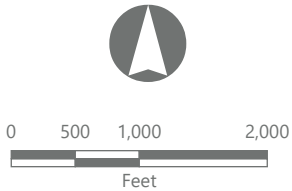


**Powell Creek Solar**

Palmer and Liberty Townships,  
Putnam County, Ohio

**Layout Comparison**

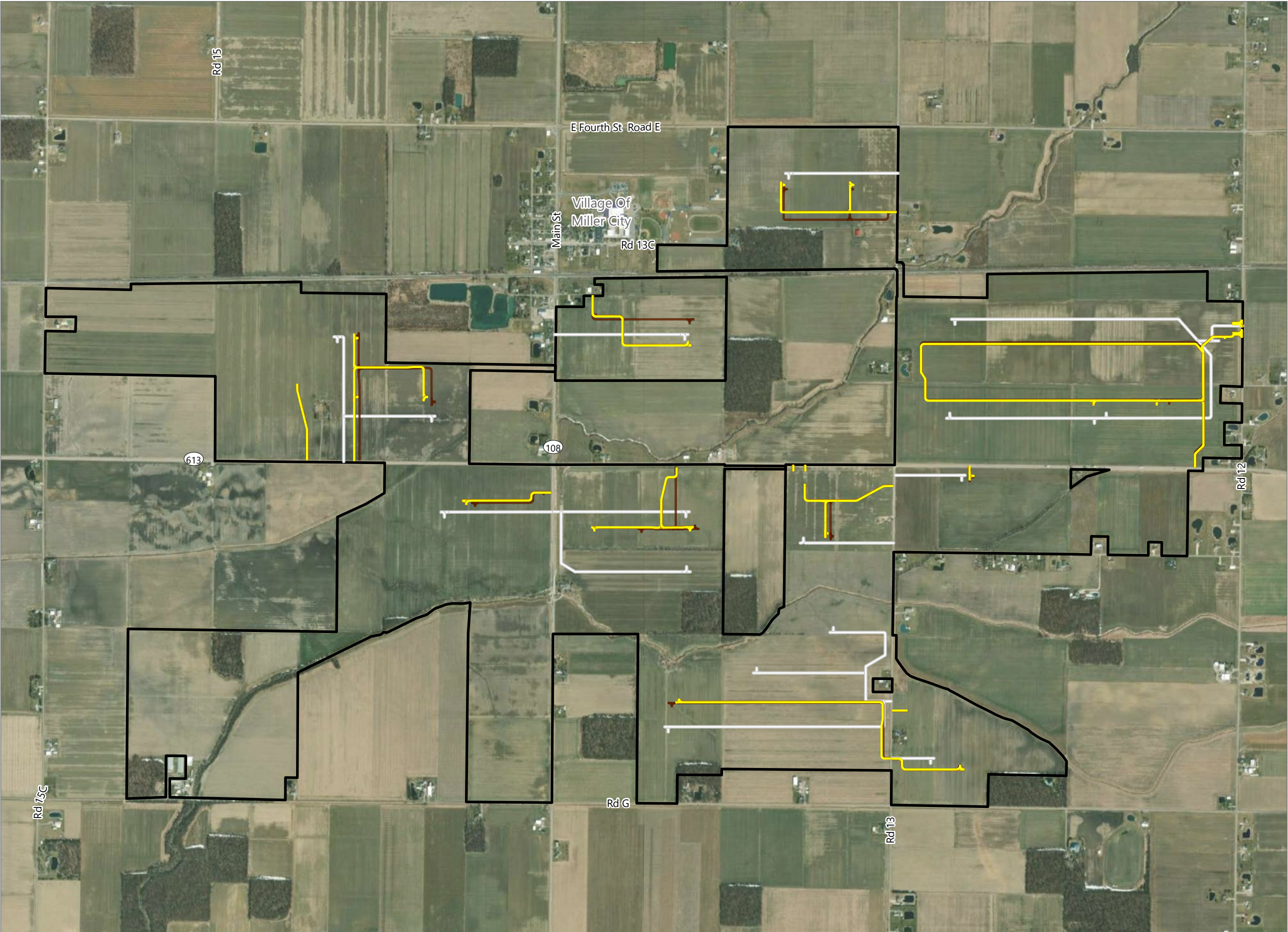
- Project Area
- ATI Layout**
  - ATI PV Panel Area
- STI-PVH Layout**
  - STI-PVH PV Panel Area
- Initial Layout**
  - Initial PV Panel Area



Prepared October 13, 2022  
Basemap: Esri "World Imagery" map service



Figure 5. Access Roads

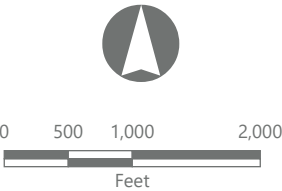


**Powell Creek Solar**

Palmer and Liberty Townships,  
Putnam County, Ohio

**Layout Comparison**

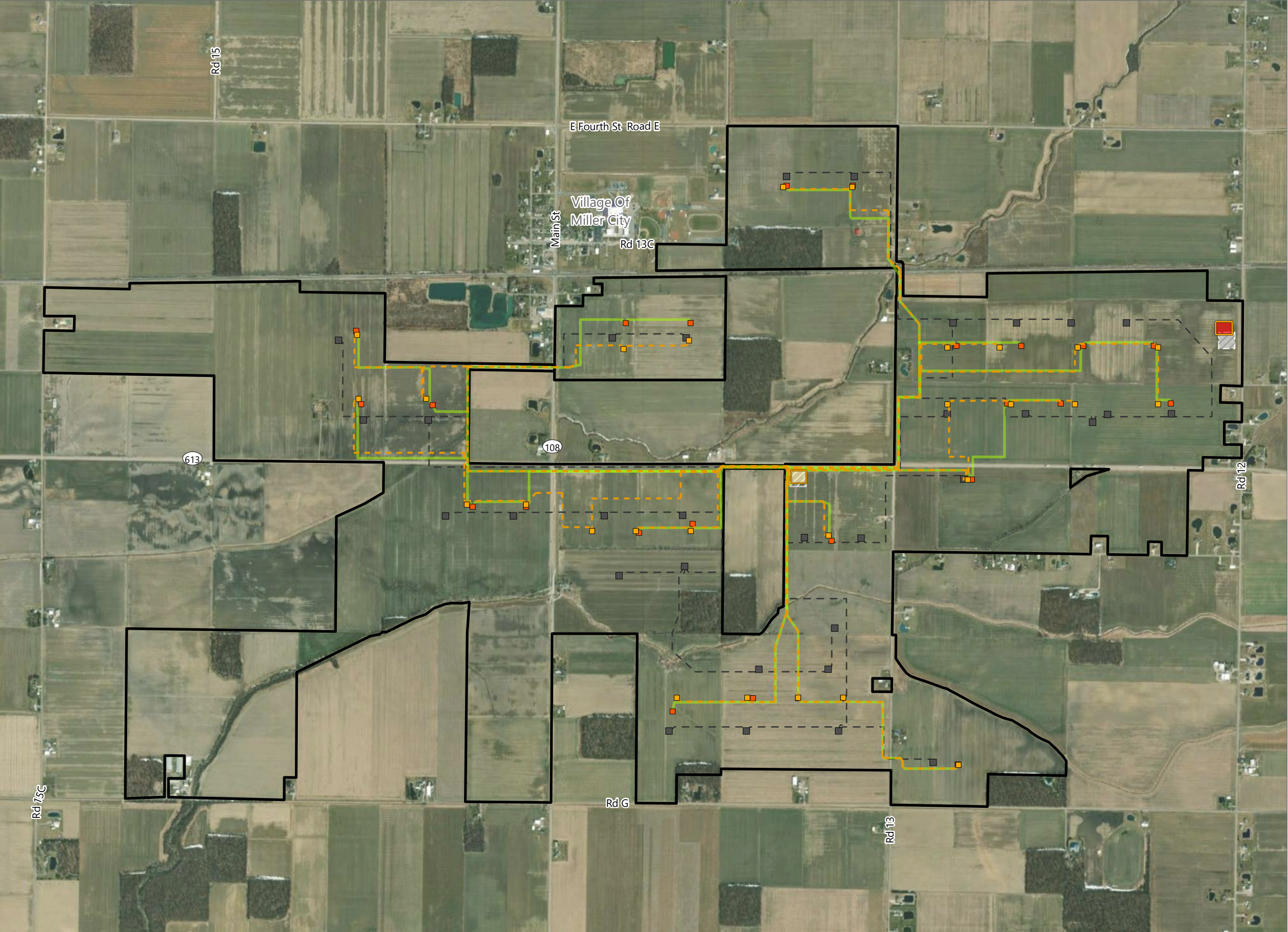
- Project Area
- ATI Layout**
  - ATI Access Road
- STI-PVH Layout**
  - STI-PVH Access Road
- Initial Layout**
  - Initial Access Road



Prepared October 13, 2022  
Basemap: Esri "World Imagery" map service



Figure 6. Inverters, Collection Lines, and Substations

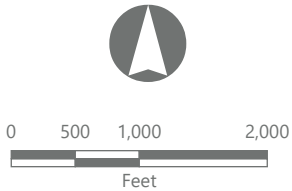


**Powell Creek Solar**

Palmer and Liberty Townships,  
Putnam County, Ohio

*Layout Comparison*

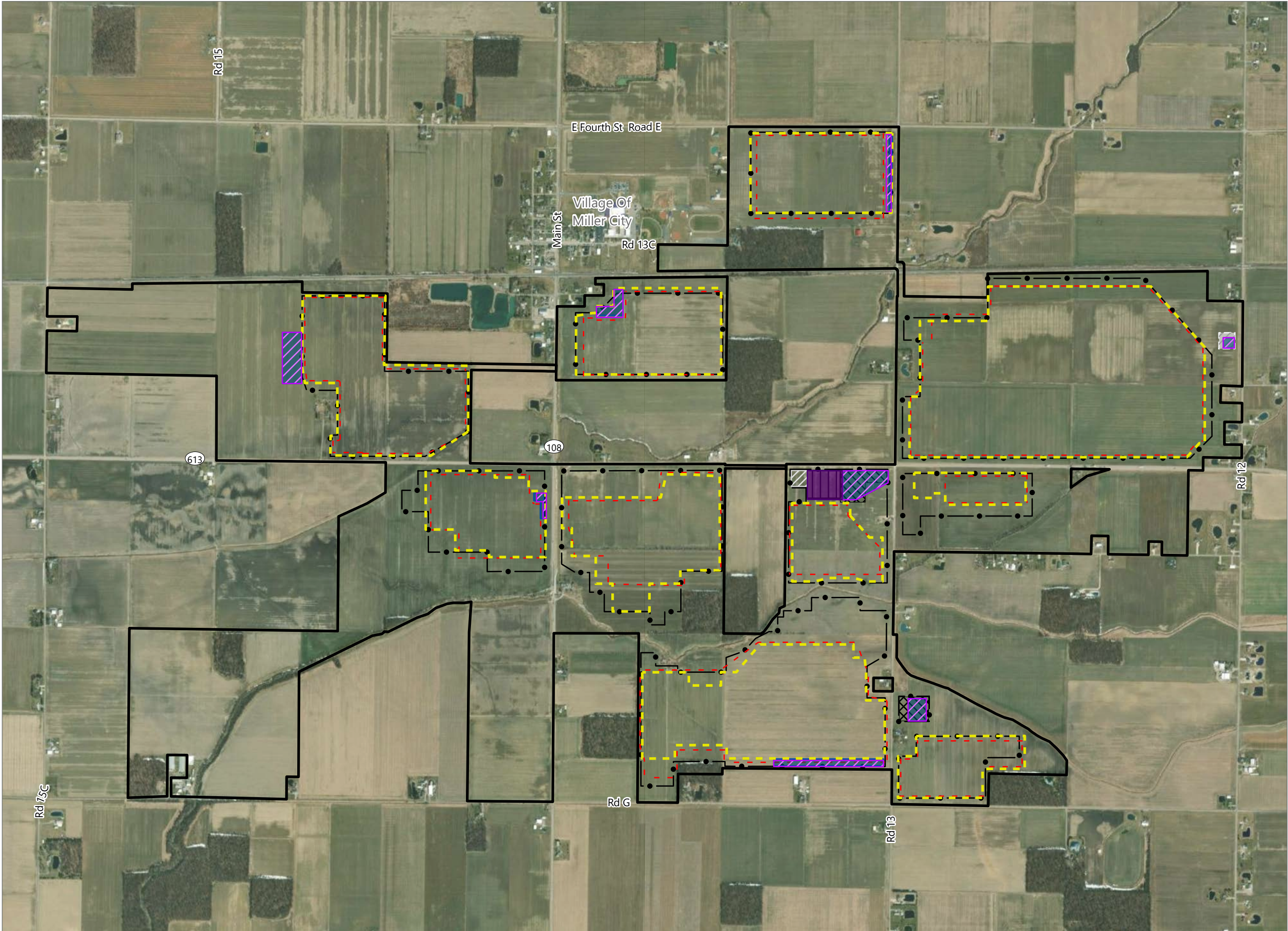
- Project Area
- Both ATI and STI-PVH Layouts
  - POI Substation
  - Collection Substation
- ATI Layout
  - ATI Inverter
  - ATI Collection Line
- STI-PVH Layout
  - STI-PVH Inverter
  - STI-PVH Collection Line
- Initial Layout
  - Initial Inverter
  - Initial Collection Line
  - Initial POI Substation
  - Initial Collection Substation



Prepared October 13, 2022  
Basemap: Esri "World Imagery" map service



Figure 7. Fencelines, O&M Building, and Laydown Yards

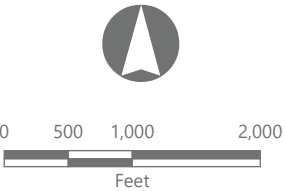


**Powell Creek Solar**

Palmer and Liberty Townships,  
Putnam County, Ohio

*Layout Comparison*

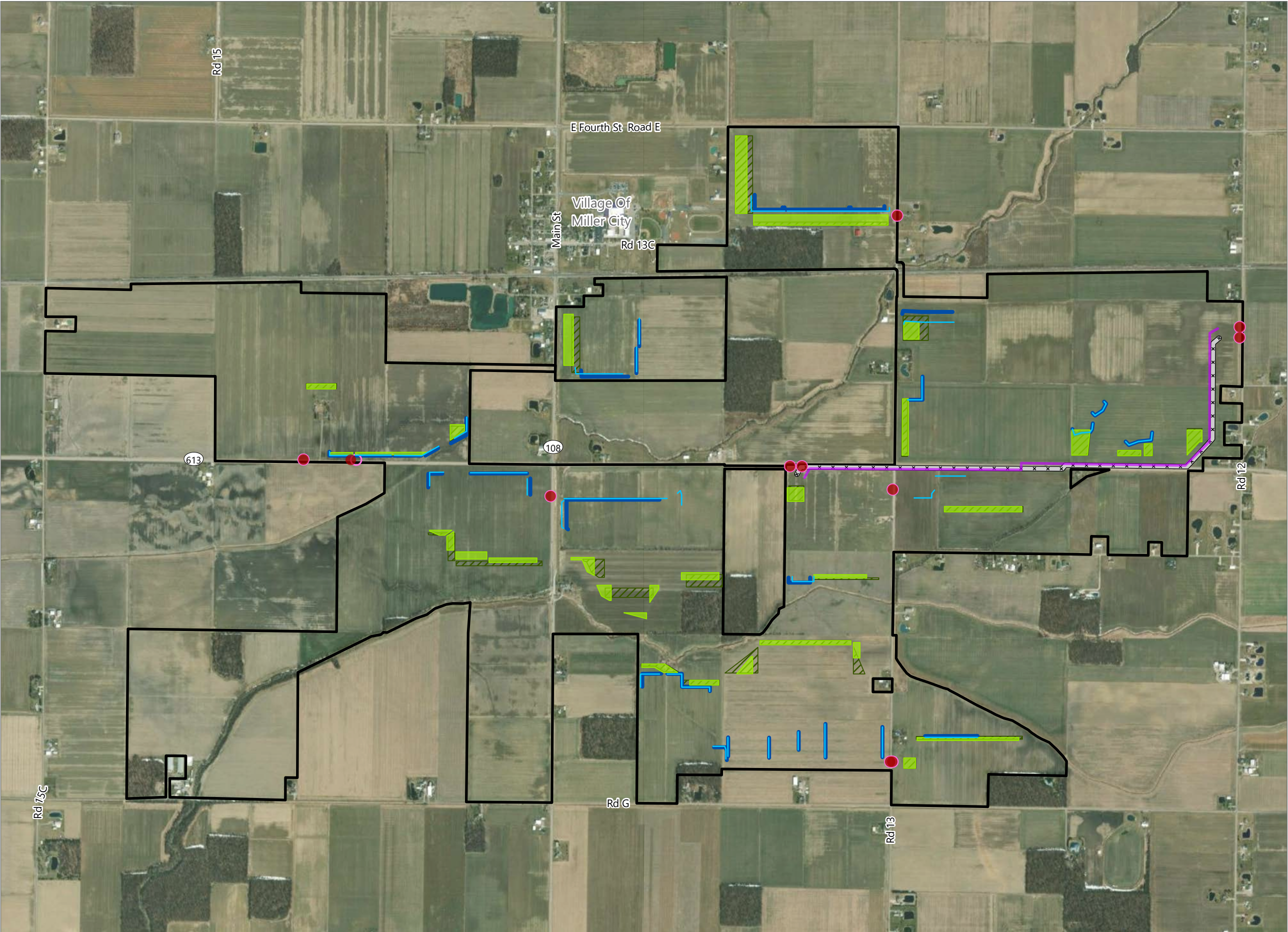
- Project Area
- Both ATI and STI-PVH Layouts
- O&M Building
- ATI Layout
- ATI Fenceline
- ATI Laydown Yard
- STI-PVH Layout
- STI-PVH Fenceline
- STI-PVH Laydown Yard
- Initial Layout
- Initial Fenceline
- Initial O&M Building
- Initial Laydown Yard



Prepared October 13, 2022  
Basemap: Esri "World Imagery" map service



Figure 8. Transmission Line, Berms, Culverts, and BMP Ponds

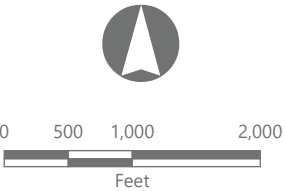


**Powell Creek Solar**

Palmer and Liberty Townships,  
Putnam County, Ohio

*Layout Comparison*

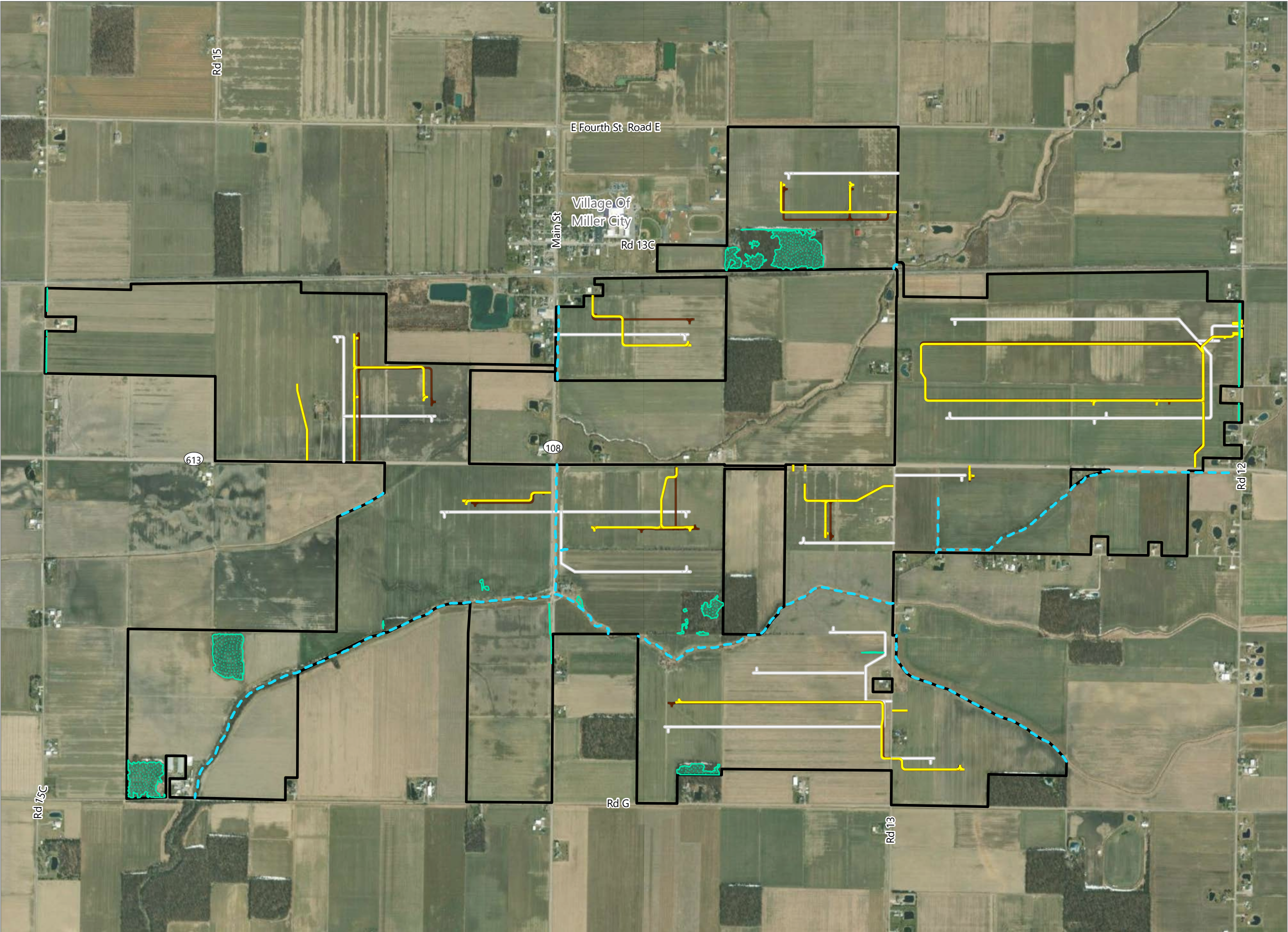
- Project Area
- Both ATI and STI-PVH Layouts
  - Transmission Line
- ATI Layout
  - ATI Culvert
  - ATI Permanent Berm
  - ATI BMP Pond
- STI-PVH Layout
  - STI-PVH Culvert
  - STI-PVH Permanent Berm
  - STI-PVH BMP Pond
- Initial Layout
  - Initial Transmission Line



Prepared October 13, 2022  
Basemap: Esri "World Imagery" map service



Figure 9. Delineated Features and Access Roads

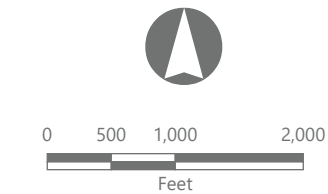


**Powell Creek Solar**

Palmer and Liberty Townships,  
Putnam County, Ohio

*Layout Comparison*

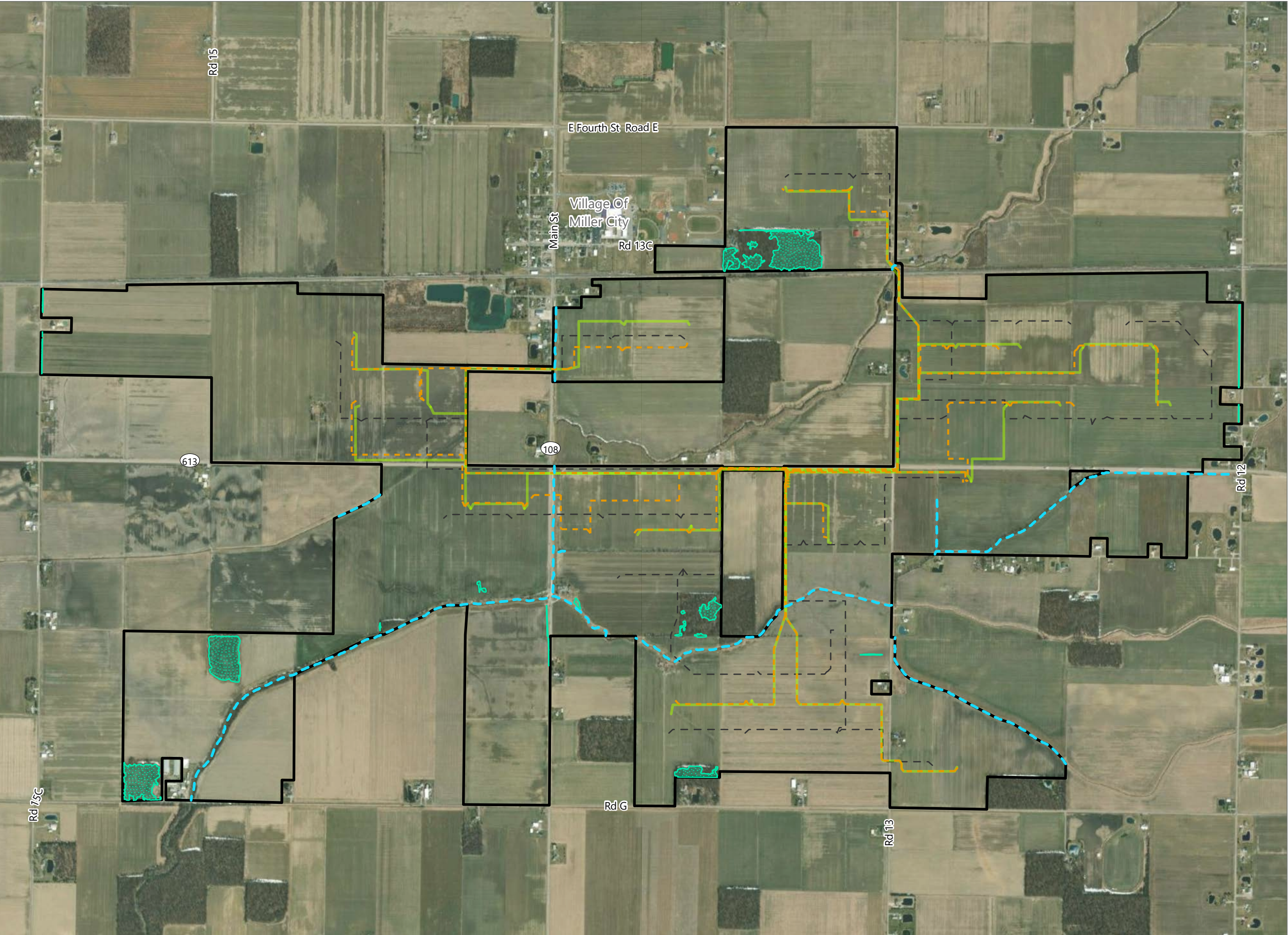
- Project Area
- Delineated Features**
  - Delineated Stream
  - Delineated Wetland
- ATI Layout**
  - ATI Access Road
- STI-PVH Layout**
  - STI-PVH Access Road
- Initial Layout**
  - Initial Access Road



Prepared October 13, 2022  
Basemap: Esri "World Imagery" map service



Figure 10. Delineated Features and Collection Lines

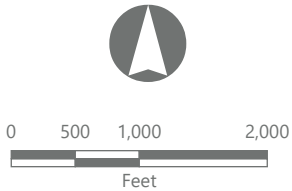


Powell Creek Solar

Palmer and Liberty Townships,  
Putnam County, Ohio

Layout Comparison

- Project Area
- Delineated Features**
  - Delineated Stream
  - Delineated Wetland
- ATI Layout**
  - ATI Collection Line
- STI-PVH Layout**
  - STI-PVH Collection Line
- Initial Layout**
  - Initial Collection Line



Prepared October 13, 2022  
Basemap: Esri "World Imagery" map service



**This foregoing document was electronically filed with the Public Utilities  
Commission of Ohio Docketing Information System on**

**10/21/2022 9:04:31 AM**

**in**

**Case No(s). 22-0915-EL-BGA**

Summary: Application Exhibit A - Post-Application Project Modification  
electronically filed by Teresa Orahod on behalf of Herrnstein, Kara