



**A. Name of Renewable Generating Facility: Lakota Wind Project**

**Facility Location**

Street Address: 428th Street  
City: Lakota State: IA Zip Code: 50451  
County: Kossuth

**Facility Latitude and Longitude**

Latitude: 43.37690000 Longitude: -94.13940000

**B. Facility Owner**

Legal Name of Facility Owner: Iowa Lakes Electric Cooperative  
Facility Owner Representative: Rick Olesen  
Street Address: 702 South 1st Street  
City: Estherville State: IA Zip Code: 51334  
Country: United States

**C. Regulatory/Emergency Contact**

Contact Person: Zane Zuther  
Title: Utility Planning Analyst  
Organization: Basin Electric Power Cooperative  
Street Address: 1717 East Interstate Avenue  
City: Bismarck State: ND Zip Code: 58503-0564  
Country: United States

**D. Facility Resource Information**

Resource Type: Wind  
Facility Description: Lakota Wind Project is a 10.5 MW wind generation facility located approximately 2.5 miles west of Lakota, Iowa and comprised of 7x 1.5 sle GE turbines. The facility is interconnected with Iowa Lakes Electric Cooperative. The generation is delivered into and settled in the Southwest Power Pool (SPP).

**E. Total Capacity**

Total Capacity in MW: 10.50000

## Generating Units

In Service Date	Manufacturer	Model Name and Number	Wind Hub Height (ft)	Wind Rotor Diameter (ft)	Number of Units	Unit Wattage (MW)	Proj Annual Gross Gen.(MWH)	Expected Annual Capacity Factor
3/30/2009	GE	1.5 sle	262	253	7	1.50000000	36,792.00	40.000000%

## Meter Information

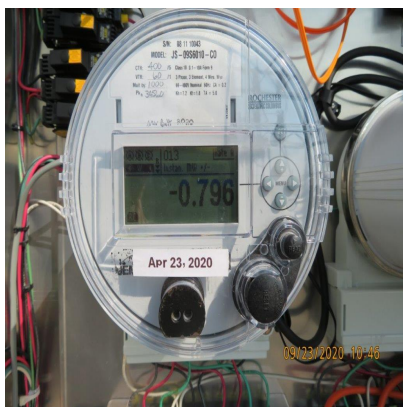
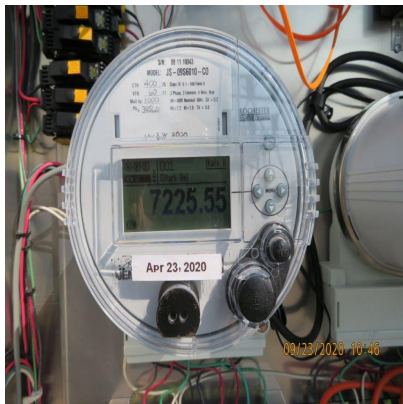
<b>Date Meter Photos Taken</b>	4/23/2020
<b>Meter Description</b>	Basin Electric Power Cooperative (BEPC) receives MV90-compatible data files from Corn Belt Power Cooperative, the generation and transmission cooperative of which Iowa Lakes Electric Cooperative is a distribution rural electric cooperative member; in turn Corn Belt Power Cooperative is a member of BEPC. Upon receipt, BEPC imports the generation data files into BEPC's MV90 system. BEPC reviews the data through our normal validation processes to ensure data accuracy. Corn Belt also sees the monthly generation energy as part of BEPC's billing checkout procedures with them. A separate group within BEPC serves as the Qualified Reporting Entity (QRE) that then uploads/submits the monthly generation total to M-RETS.

## Utility Meters

Utility Meter Manufacturer	Utility Meter Serial Number
Jemstar (JS-09S6010-CO)	100512885

## Meter Photographs







## Additional Facility Information

<b>Tracking System</b>	M-RETS (Midwest Renewable Energy Tracking System)
<b>Interconnection</b>	
<b>Other Utility Interconnection</b>	Iowa Lakes Electric Cooperative
<b>Date Facility Photo Taken</b>	7/25/2010

## Facility Photographs



**This foregoing document was electronically filed with the Public Utilities**

**Commission of Ohio Docketing Information System on**

**10/26/2020 2:39:52 PM**

**in**

**Case No(s). 20-1638-EL-REN**

Summary: Application electronically filed by Mr. Stuart M Siegfried on behalf of Applicant