

Cultural Resources Records Review

New Market Solar I
Clay and Whiteoak Townships
Highland County, Ohio

August 2020

Terracon Project No. 49187638A



Jonathan Brown, MHP
Architectural Historian
Principal Investigator

Prepared For:

Hecate Energy Highland 4 LLC
Chicago, Illinois

Prepared By:

Terracon Consultants, Inc.
Lawrenceville, Georgia

Offices Nationwide
Employee-Owned

Established in 1965
terracon.com

Terracon

■ Environmental ■ Construction Materials ■ Facilities

Cultural Resources Records Review

New Market Solar I ■ Clay and Whiteoak Townships, Ohio
August 2020 ■ Terracon Project No. 49187638A



APPENDIX

FIGURE 1 SHPO 1 Mile Buffer Map

FIGURE 2 SHPO 5 Mile Buffer Map

1.0 PROJECT SUMMARY

Hecate Energy Highland 4 LLC is proposing to construct the New Market Solar I (Project Site) near Buford, Ohio, which is located approximately 30 miles east of Cincinnati. The Project is proposed to be constructed within approximately 822 acres of private leased land located in Highland County, Ohio. Terracon Consultants, Inc. (Terracon), on behalf of Hecate Energy Highland 4 LLC, has completed a cultural resources records review for the proposed Project. The cultural resources records review was conducted per the Ohio Power Siting Board (OPSB) to fulfill the requirements of Ohio Administrative Code (OAC) § 4906-4-08(B). The study was completed by a Registered Professional Archaeologist (RPA) and a qualified architectural historian who meets the U.S. Secretary of Interior's Professional Qualifications Standards for Historic Preservation.

2.0 SITE DESCRIPTION

The Project Site comprises approximately 822 acres of land, most of which consists of agricultural land. The proposed photovoltaic (PV) solar energy facility will have a proposed generation capacity of 65 megawatts (MW). The Project includes the development of photovoltaic (PV) panels and supporting steel frames. Terracon understands plans also include the development of some access roads and a small substation.

3.0 RESEARCH METHODS

3.1 Area of Potential Effects

The area of potential effects (APE) for direct effects consists of all areas of potential ground disturbance within the Project boundaries. The APE for indirect effects consists of all areas that could potentially fall within the visual line of site of the proposed Project. Based on OPSB requirements, a records review was completed for a 5-mile radius from the Project boundaries (Figure 2). While resources within 5-miles are discussed, visual impacts are only anticipated within 1-mile of the project based on topography, vegetation, distance.

3.2 Records Review

File review was conducted using resources available from the Ohio State Historic Preservation Office (SHPO) Online Mapping System. The database included review of the Ohio Archaeological Inventory, the Ohio Historic Inventory, National Register of Historic Places (NRHP) files, the Historic Bridge Inventory, previous cultural resource surveys and information on cemeteries maintained by the Ohio Genealogical Society.

4.0 RECORDS REVIEW RESULTS

The records review in the SHPO Online Mapping System identified no previously recorded NRHP-listed or eligible properties, surveyed architectural resources, archaeological sites or previous cultural resource surveys within the Project boundaries. Within the 5-mile radius of the Project boundaries, two NRHP-listed properties, no NRHP-eligible properties, 59 previously surveyed architectural resources with no NRHP evaluation, 34 archaeological sites, and 57 OGS cemeteries were recorded (Figure 2).

4.1 NRHP-listed or eligible Properties

Two NRHP-listed properties were identified within 5 miles of the Project boundaries. The nearest of the NRHP-listed properties is located approximately 2-miles northwest of the Project. The proposed project will not be visible from any NRHP-listed properties.

4.2 National Historic Landmarks (NHL)

No previously recorded NHL properties are located within 5 miles of the Project boundaries.

4.3 Historic Bridge Inventory

No bridges listed in the Ohio Historic Bridge Inventory are located within the 5 miles of the Project boundaries.

4.4 Ohio Historic Inventory

There are 59 historic structures within the OHI are located within the 5 miles of the Project boundaries. Historic structures in the OHI have not been formally evaluated for listing in the NRHP. The nearest of the OHI historic structures are located approximately 3.8 miles southwest of the Project in the town of Buford. The proposed Project will not be visible from any OHI historic structures.

4.5 Ohio Archaeological Inventory Sites

The Ohio Archaeological Inventory (OAI) recorded 34 archaeological sites within 5 miles of the project boundaries. As these sites are generally below ground, visual impacts are not a concern for these types of resources. Of these, four sites are mapped within the 1-mile APE of the project. None of these sites are located within the Project boundaries. A summary of the OAI sites within 1-mile of the site is included in Table 1.

Table 1: OAI Sites within 1-Mile Radius

Site No.	Site Type	Time Period	Setting
HI0463	Unknown	Non-Aboriginal Historic	Open
HI0465	Unknown	Non-Aboriginal Historic	Open
HI0466	Unknown	Non-Aboriginal Historic	Open
HI0467	Unknown	Late Archaic and Non-Aboriginal Historic	Open

4.6 Previous Cultural Resource Surveys

Based on the SHPO Online Mapping System, no prior cultural resource surveys have been conducted within the Project boundaries and/or within 1-mile of the project.

4.8 Ohio Genealogical Society Cemeteries

Based on the SHPO Online Mapping System, 57 Ohio Genealogical Society (OGS) cemeteries are recorded within 5 miles of the project boundaries. Six cemeteries were identified within 1-mile. None of the OGS cemeteries have been determined to be eligible for the NRHP. No OGS cemeteries are recorded within the Project boundaries.

Table 3: OGS Cemeteries within 1-Mile Radius

OGS ID	Cemetery Name	Location Description	Location Confidence
5210	MILLER	South side of CR 5B. Just west of TR 201B	No
5156	HOLLOWTOWN-SMITH	Near Hollowtown. Between SR 138 and CR 24A	Yes
5367	UNNAMED #3	North side of CR 56A. Just east of CR 60A. On farm. Once owned by David Fender	No
5163	UNNAMED #3	In bed of TR 401A connecting Buford-Hillsboro Pike (SR 138) with Straightout-Buford Pike (CR 5A)	No
5365	UNNAMED #1	East side of TR 146B. North of CR 24C. To west of Conrail Railroad tracks. On farm owned by J. Coffman (<1871)	No
5366	UNNAMED #2	Near Clay Township line. North side of CR 56A. Well back from road. On farm. Once owned by H. Robinson. I. Shaw (1916)	No

5.0 CONCLUSIONS

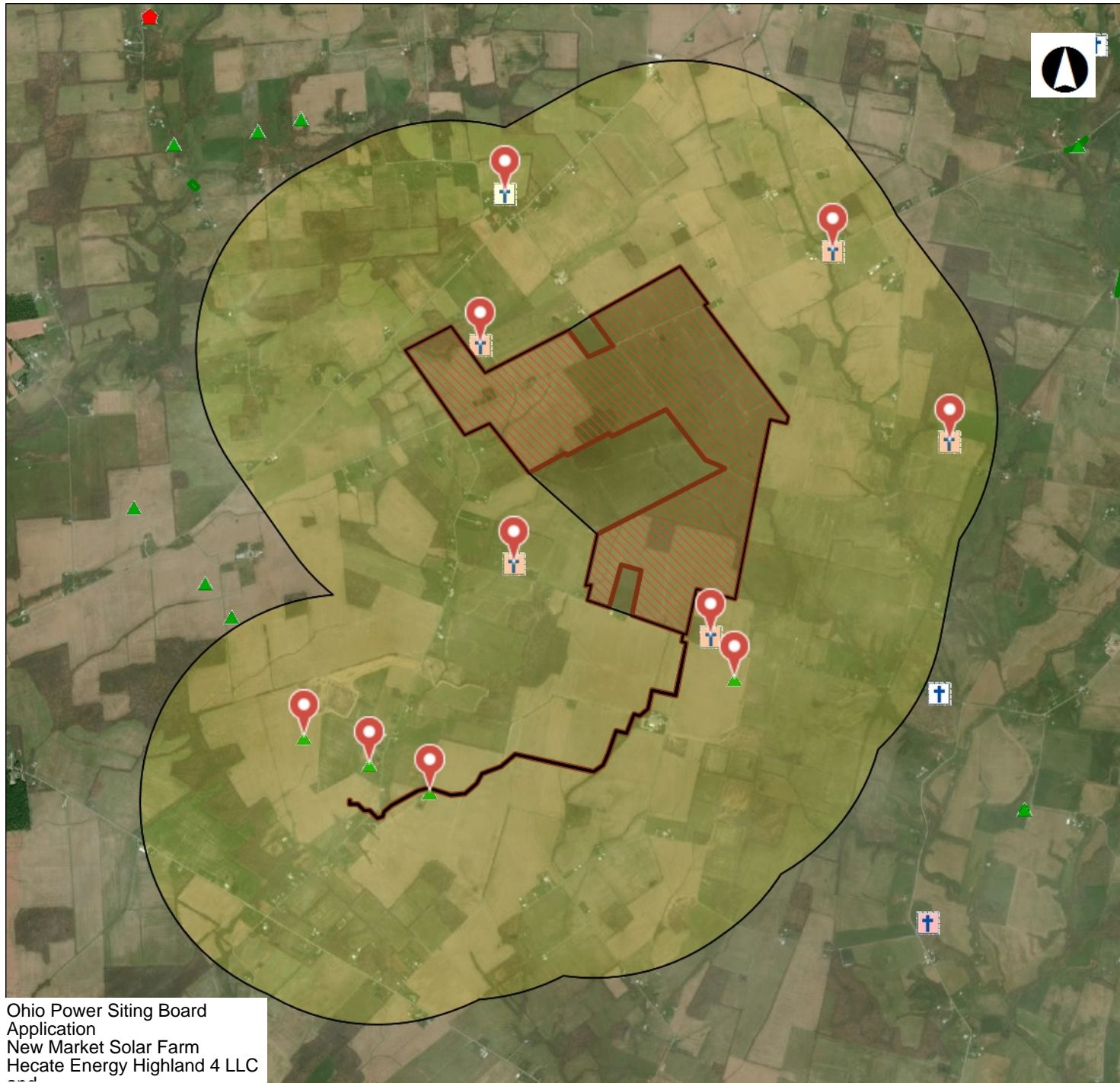
The cultural resources records review identified two NRHP-listed properties and 59 previously surveyed architectural resources that have not been evaluated for NRHP eligibility within a 5-mile radius of the Project boundaries. No resources were identified on the Project site. Impacts are not anticipated to these resources based on the topography, vegetation, existing development, and

Cultural Resources Records Review

New Market Solar I ■ Clay and Whiteoak Townships, Ohio
August 2020 ■ Terracon Project No. 49187638A



distance. It should be noted there may be multiple 19th and 20th century structures within the 1-mile radius of the Project boundaries which have not been evaluated due to lack of inclusion in the SHPO inventory. Based on the limited predicted visibility and the low density of previously recorded historic resources within the visual APE the Project is not anticipated to result in significant impacts to historic resources. A full Phase I Cultural Resource Survey, to include an archeological survey and visual impacts, is recommended prior to project construction.



Ohio Power Siting Board
Application
New Market Solar Farm
Hecate Energy Highland 4 LLC



State Historic
Preservation Office

Legend

NR Listings

- Listed
- ⊙ National Historic Landmark
- ✕ Delisted

- ◆ NR Determinations of Eligibi
- ▲ Archaeological Sites
- Historic Structures
- Historic Bridges
- Historic Tax Credit Projects

OGS Cemeteries

- ⚭ Confident
- ⚭ Not Confident

Historic Markers

- UTM Zone Split
- ▤ NR Boundaries
- OAI Site Boundaries
- ▤ Phase1
- ▤ Phase2

0 0.73 1.46 Miles



1: 57,696

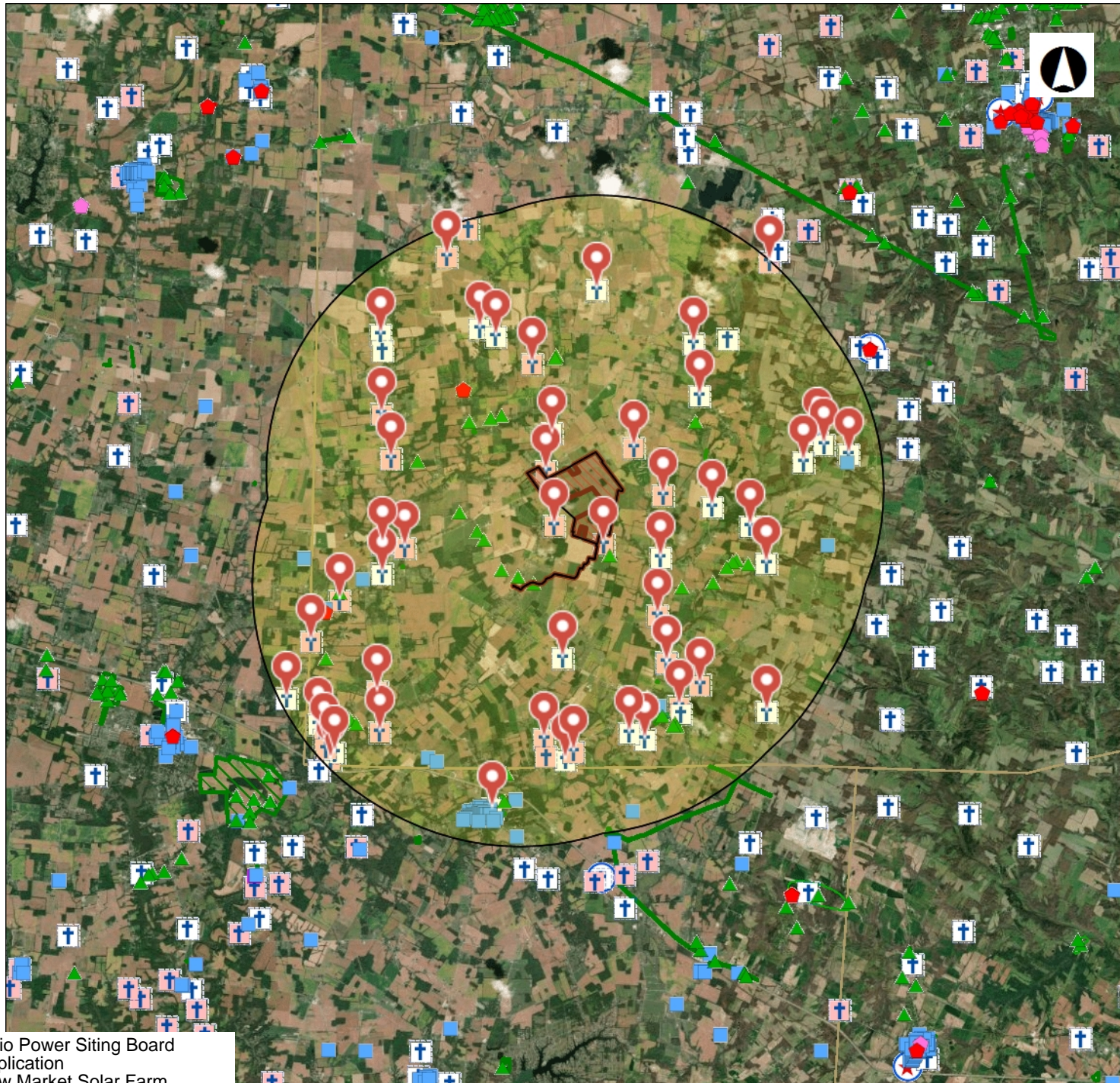
Copyright/Disclaimer

This map is a user generated static output from an Internet mapping site and is for general reference only. Data layers that appear on this map may or may not be accurate, current, or otherwise reliable. THIS MAP IS NOT TO BE USED FOR NAVIGATION.

Datum: [Datum]

Projection: WGS_1984_Web_Mercator_Auxiliary_Sphere





Ohio Power Siting Board
Application
New Market Solar Farm
Hecate Energy Highland 4 LLC



State Historic
Preservation Office

Legend

NR Listings

- Listed
- ⊙ National Historic Landmark
- ✕ Delisted
- ◆ NR Determinations of Eligibi
- ▲ Archaeological Sites
- Historic Structures
- Historic Bridges
- Historic Tax Credit Projects

OGS Cemeteries

- † Confident
- † Not Confident

Historic Markers

- ⊙ UTM Zone Split
- ▭ NR Boundaries
- ▭ OAI Site Boundaries
- ▭ Phase1
- ▭ Phase2

0 2.91 5.83 Miles



1: 230,785

Copyright/Disclaimer

This map is a user generated static output from an Internet mapping site and is for general reference only. Data layers that appear on this map may or may not be accurate, current, or otherwise reliable. THIS MAP IS NOT TO BE USED FOR NAVIGATION.

Datum: [Datum]

Projection: WGS_1984_Web_Mercator_Auxiliary_Sphere



This foregoing document was electronically filed with the Public Utilities

Commission of Ohio Docketing Information System on

9/2/2020 5:14:35 PM

in

Case No(s). 20-1288-EL-BGN

Summary: Exhibit Application Exhibit I (Part 1) electronically filed by Ms. Karen A. Winters on behalf of Hecate Energy Highland 4 LLC