

**Duke Energy Ohio
Case No. 20-0134-EL-BLN
STAFF First Set of Data Requests
Date Received: May 1, 2020**

**STAFF-DR-01-003
SUPPLEMENTAL**

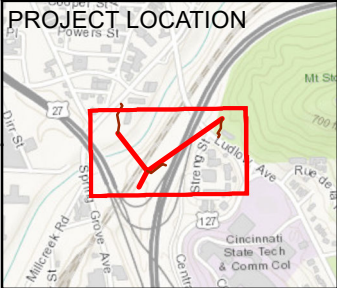
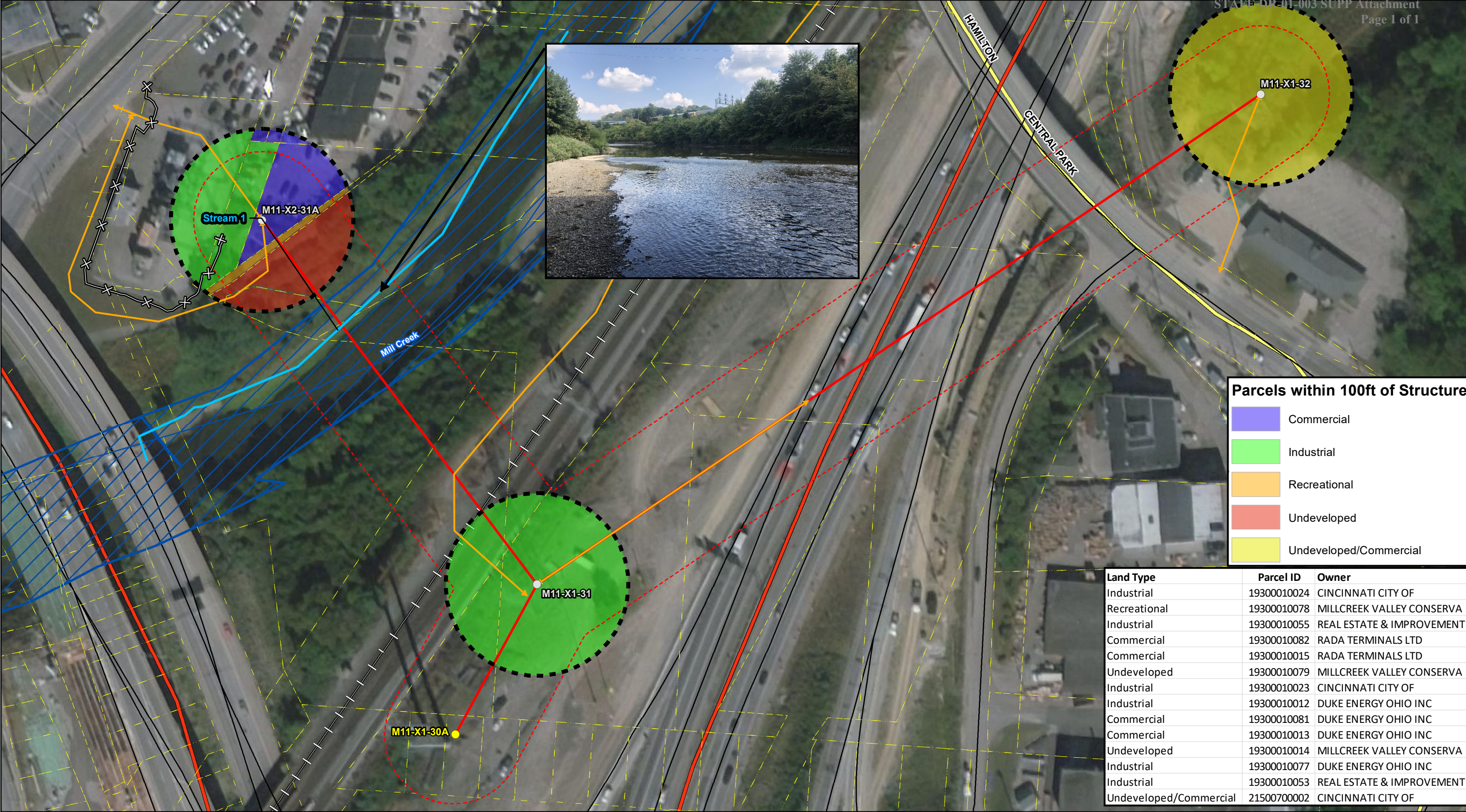
REQUEST:

As this case is similar to the 19-1471 case, in terms of ODOT wanting you to relocate due to I-75 improvements, and in light of the residential issues we are dealing with for that one, can you lay out the proximity of the closest structures to homes?

- a. If there are any stub poles?
- b. And how you will handle complaints from residents if they have them as it relates to this project please?

SUPPLEMENTAL RESPONSE: Please see STAFF-DR-01-003 Attachment.

PERSON RESPONSIBLE: Cori Jansing / Dustin Giesler



REFERENCE: USGS 7.5' TOPOGRAPHIC QUADRANGLE: CINCINNATI WEST, OHIO. OBTAINED VIA ESRI USA TOPO, NATIONAL GEOGRAPHIC TOPO, AND USGS, ACCESSED 01/2017.

100-ft Buffer

Proposed Structure

Existing Structure

150-ft Corridor

Fence Line

Existing Facility

Interstate

NHD Flowline

Potnetial_Access

State Highway

US Highway

Railroad

Project Centerline

Municipal Boundary

NWI Wetlands

Parcels

02550100

Feet

FIGURE 2.01
OPSB BLN FILING
CUMMINSVILLE PHASE 5B REBUILD PROJECT
DUKE ENERGY OHIO
PROXIMITY TO RESIDENTIAL HOMES MAP

DRAWN BY: SKL
CHECKED: CAJ

DATE: 5/6/2020
APPROVED: CAJ

This foregoing document was electronically filed with the Public Utilities

Commission of Ohio Docketing Information System on

5/8/2020 8:12:05 AM

in

Case No(s). 20-0134-EL-BLN

Summary: Correspondence Duke Energy Ohio, Inc.'s Supplemental Response to Staff Data Request 01-003 electronically filed by Carys Cochern on behalf of Duke Energy