



155 East Broad Street  
20<sup>th</sup> Floor  
Columbus, Ohio, 43215

o: 614-222-1330  
f: 614-222-1337

April 17, 2020

Ms. Tanowa M. Troupe  
Ohio Power Siting Board  
PUCO Docketing Division  
180 East Broad Street, 11<sup>th</sup> Floor  
Columbus, OH 43215-3716

Re: Case No. 16-253-GA-BTX  
Cincinnati Permit TPZ2002739 Losantiville Avenue Bore

Dear Ms. Troupe:

Duke Energy Ohio, Inc., is filing, herewith, Permit No. TPZ2002739, issued by the City of Cincinnati, for a bore under Losantiville Avenue.

Please contact me if you have any questions.

Sincerely,

Emily A. Olive, CP  
Paralegal

# Transportation & Engineering Permit

Permit No.: TPZ2002739

City of Cincinnati  
Department of Transportation & Engineering  
Division of Engineering  
Permit & License Center  
Phone: 1-513-352-3463  
Fax: 1-513-352-5397

Permit Type: *Street Opening Permit*  
*DUKG-New*

This permit is valid for work starting  
11/01/2020 and void after 10/30/2022

Plans Attached? Y

**Permittee:**  
CINCINNATI GAS & ELECTRIC - GAS  
4612 KELLOG AVENUE  
ATTN: PERMIT DEPT.  
CINCINNATI, OHIO 45226

**Contact:** NICK WEIL - DUKE ENERGY  
513-287-2088

**24-Hours:**

**Insp:** JEFF WISSEMEIER  
**District:** 4 - ROSELAWN

**Location:** 1949 LOSANTIVILLE AV, LOSANTIVILLE AVENUE

**Work Street:** LOSANTIVILLE AV

**From Street:** EASTLAWN DR

**To Street:** CINC[GOLFMN CORPLINE

**Work Order No.:**

**This Permit has been granted to do the following:** LOSANTIVILLE AV - DUKG-New

**Street Area Impacted:** Overall Length: 0 Overall Width: 0 ; **Road:** 20 x 4 **Sidewalk:** 0 x 0

## Special Notes:

1: PERMIT IS FOR THE INSTALLATION OF 20" STEEL PIPELINE ACROSS LOSANTAVILLE AVE AS PART OF THE DUKE CENTRAL CORRIDOR PROJECT.

WORK IS SCHEDULED FROM 7 AM - 7 PM DAILY.

2: Requests for temporary parking restrictions must be made at the police district in which the requested restriction is geographically located.

If you are not certain of the police district an address is geographically located in, contact any police district for assistance in verifying the location.

It is the requestor's responsibility to submit the Parking Restriction Request in sufficient time to place the restriction sign(s)/meter bag(s) to comply with minimum lead time requirement in advance of the restriction, or the request may be unenforceable. Do not place restriction sign(s)/meter bag(s) beyond the maximum hours, in advance. When completing a Parking Restriction Request Form at a police district, be prepared to provide the DOTE, Right-of-Way Section issued permit. When a parking restriction form is received, the accepting officer will review the form for completeness and sign that it was received.

If you wish to temporarily restrict parking in an area that is not otherwise restricted, the completed request form must be submitted, AND the restriction sign(s) posted a minimum of 24 hours in advance, but not more than 36 hours in advance.

If you wish to temporarily restrict parking in metered parking spaces only, the completed request form must be submitted, AND the restriction sign(s)/meter bag(s) posted a minimum of 14 hours in advance, but not more than 24 hours in advance.

The receiving officer will advise the requesting party that they will be notified upon approval. Although signs and bags may be given to requesting parties at time of request, signs are not to be posted until notification of approval is made.

Upon posting the signs the requesting agency must call the District. The signs will not be enforced if the agency fails to notify the District.

3: When no work is being performed, the entire roadway must be open and available to the movement of all traffic. All material and debris must be removed. Any work in the Right-of-Way that is not complete, MUST BE plated or otherwise open to traffic, and secured for safety purposes, for both pedestrian and vehicular traffic.

Doc Control #: TE20009634

4: All maintenance of traffic shall be performed in accordance with Item 614 "Maintenance of Traffic", as provided in the State of Ohio, Department of Transportation "Construction and Materials Specifications" (ODOTCMS) and the City of Cincinnati Supplement to the ODOTCMS and the requirements for maintaining traffic in the "Ohio Manual of Uniform Traffic Control Devices" (OMUTCD). The City of Cincinnati's "Traffic Safety Handbook" may be used as a supplement to the OMUTCD. Advanced Warning Signs, Reflective Cones and Arrow Boards where applicable, shall be the responsibility of the permittee to comply. Approval of this permit DOES NOT RELIEVE THE PERMITTEE of that responsibility.

5: The permitted equipment must have company identification and meet City Public Works specifications for reflectivity at all times especially if the equipment will be used during nighttime hours. Construction barrels are required if the equipment does not comply with the city's reflectivity requirements. A sufficient number of barrels must be placed in advance of the equipment, immediately next to each other for the full width of the portion of roadway or the traffic lane that is blocked by the equipment. The approaching traffic must be able to see the barrels.

6: Any collateral damage must be repaired as directed by the DOTE Inspector.

**IMPORTANT: This permit including any approved documents must be kept on the job site at all times.**

**FOR INSPECTION: CALL 352-3451, BETWEEN 7:30 AND 8:30 AM, WEEKDAYS, EVERYDAY THAT YOU ARE DOING WORK UNDER THIS PERMIT. IF YOU ARE DOING WORK UNDER THIS PERMIT ON WEEKENDS, YOU MUST CALL IN THE FRIDAY BEFORE, BETWEEN 7:30 AND 8:30 AM.**

In performing work under this permit, the Permittee is responsible for all related operations, that the operations conform to all applicable statutes, rules and regulations of the City of Cincinnati, State of Ohio, and that the Permittee shall defend, indemnify, and hold the City, its officers, employees, and agents harmless from and against any and all actions, suits, claims, losses, costs (including without limitation attorneys fees), demands, judgments, liability and damages arising from the work done under this permit.

**THIS PERMIT MAY BE REVOKED AT ANY TIME**

**Call before you dig 1-800-362-2764 or 811**

**Estimated Total Permit Fee:**

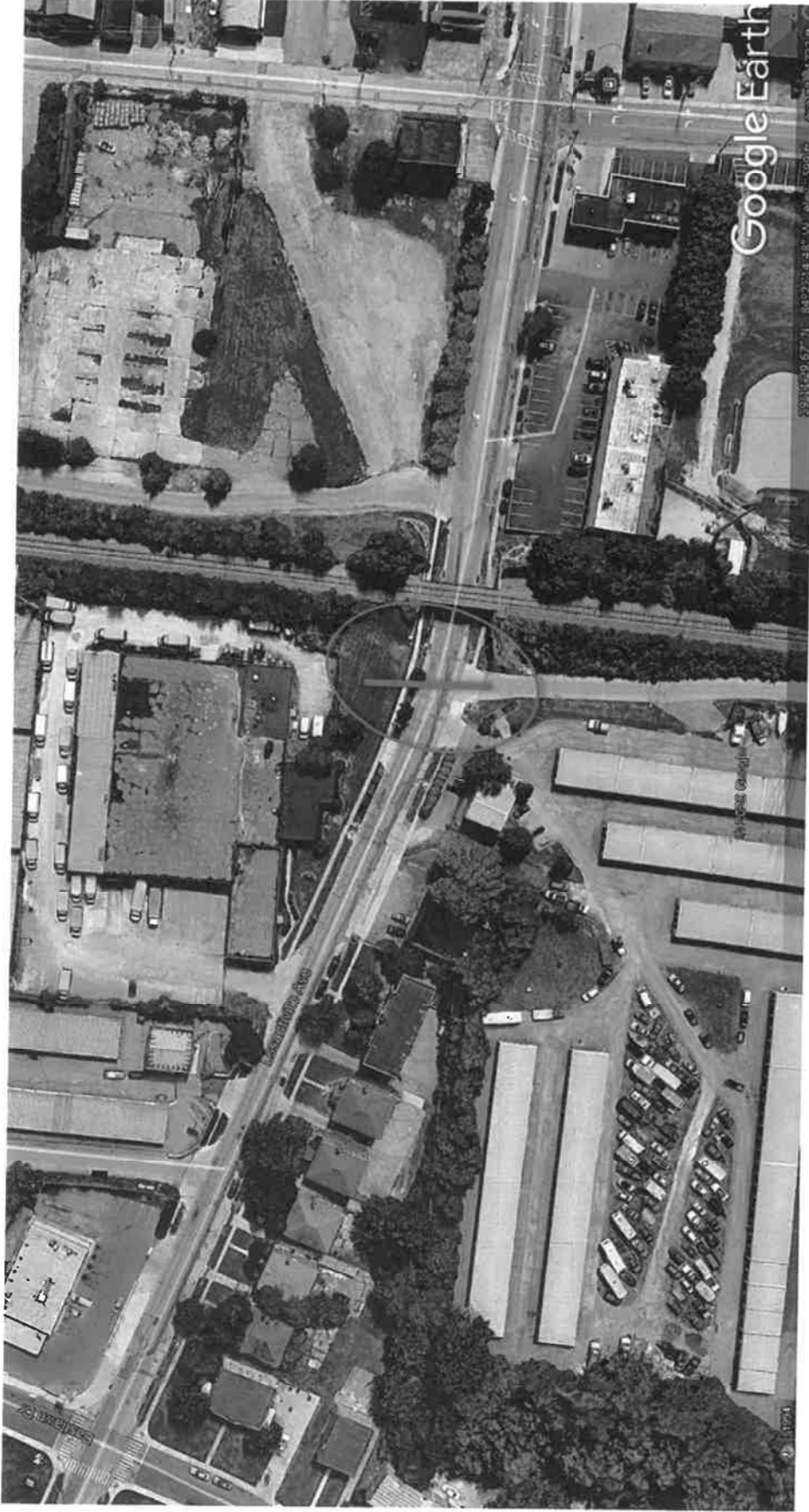
**\$0.00**

Final costs will be based on total measured quantities and total inspection hours.



City Engineer / Designee

Date



# LOSANTIVILLE OPEN CUT

C350 PIPELINE  
HAMILTON COUNTY, OH



ISSUE FOR PERMITTING  
03/20/2020



LOSANTIVILLE AVE

PROPOSED 20"  
C350 PIPELINE

CITY OF  
CINCINNATI  
ROW

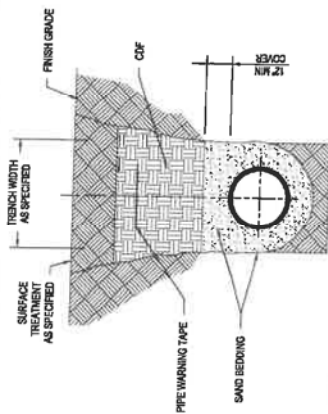


## LOSANTIVILLE OPEN CUT

C350 PIPELINE  
HAMILTON COUNTY, OH

BURNS  MCDONNELL

ISSUE FOR PERMITTING  
03/20/2020



NOTES:

1. PIPE BEDDING SHALL BE CLEAN, GRADED SAND COMPACTED TO PROVIDE EVEN SUPPORT FOR PIPE. APPROVED MATERIALS MAY INCLUDE W/STONE DUST OR SIMILAR BEDDING MATERIAL SHALL FULLY ENCLOSE PIPE.
2. PIPE WARNING TAPE SHALL BE INSTALLED APPROXIMATELY 24" UP ABOVE PIPELINE, OR AS OTHERWISE RECOMMENDED BY MANUFACTURER. MATERIALS SHALL BE SIGNAL TAPE OR APPROVED EQUIVALENT AND SHALL BE NON-TRACEABLE VARIETY.

## UTILITY TRENCH

SCALE: N.T.S.

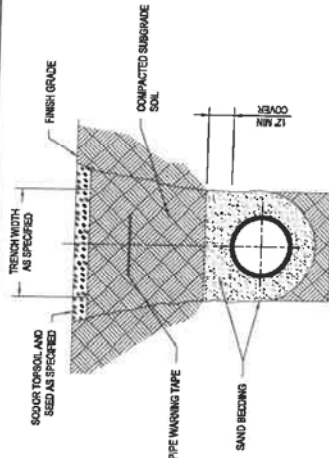


NOTES:

1. THICKNESS OF ALL REPLACEMENT COURSES SHALL BE EQUAL TO EXISTING BUT SHALL NOT BE LESS THAN INDICATED.
2. CONCRETE PAVEMENT SHALL BE SAWCUT AND REMOVED TO NEAREST JOINT TO PREVENT PARTIAL PANEL REMOVAL. SAWCUT SHALL BE MADE AT A RIGHT ANGLE TO THE CENTERLINE OF THE PAVEMENT.
3. SAWCUTS THAT EXTEND OUTSIDE THE AREA OF REMOVAL AND REPLACEMENT SHALL BE FILLED WITH AN EPOXY-BASED GROUT APPROVED BY THE ENGINEER.
4. FULL DEPTH SAWCUTS SHALL BE MADE AROUND THE PERIMETER OF THE AREA TO BE PATCHED. THE CUT SHALL BE MADE AT A RIGHT ANGLE TO THE PAVEMENT EDGE AND TO THE CENTERLINE OF THE PAVEMENT.
5. LONGITUDINAL FULL DEPTH SAW CUTS SHALL BE AT EXISTING LONGITUDINAL JOINTS.
6. ADDITIONAL SAWCUTS MAY BE REQUIRED WITH THE AREA OF THE PATCH TO FACILITATE REMOVAL OF THE CONCRETE OR TO ALLEVIATE BINDING OF THE FULL DEPTH SAW CUT AT THE PATCH EDGE.

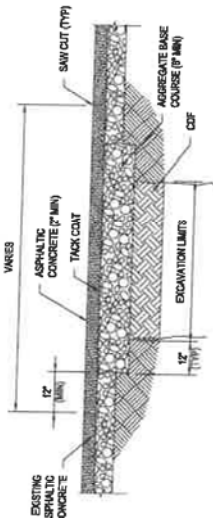
## CONCRETE PAVEMENT REMOVAL AND REPLACEMENT FOR UTILITY TRENCH

SCALE: N.T.S.



NOTES:

1. PIPE BEDDING SHALL BE CLEAN, GRADED SAND COMPACTED TO PROVIDE EVEN SUPPORT FOR PIPE. APPROVED MATERIALS MAY INCLUDE W/STONE DUST OR SIMILAR BEDDING MATERIAL SHALL FULLY ENCLOSE PIPE.
2. PIPE WARNING TAPE SHALL BE INSTALLED APPROXIMATELY 24" UP ABOVE PIPELINE, OR AS OTHERWISE RECOMMENDED BY MANUFACTURER. MATERIALS SHALL BE SIGNAL TAPE OR APPROVED EQUIVALENT AND SHALL BE NON-TRACEABLE VARIETY.

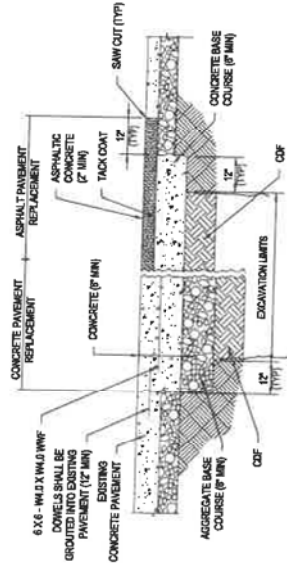


NOTES:

1. THICKNESS OF ALL REPLACEMENT COURSES SHALL BE EQUAL TO EXISTING BUT SHALL NOT BE LESS THAN INDICATED.
2. BASE COURSE SHALL BE PORTLAND CEMENT TO MATCH EXISTING CONCRETE BASE AND SHALL BE ASPHALTIC CONCRETE BASE TO REPLACE ALL OTHER BASE MATERIALS.
3. SAWCUTS THAT EXTEND OUTSIDE THE AREA OF REMOVAL AND REPLACEMENT SHALL BE FILLED WITH AN EPOXY-BASED GROUT APPROVED BY THE ENGINEER.

## ASPHALT PAVEMENT REMOVAL AND REPLACEMENT FOR UTILITY TRENCH

SCALE: N.T.S.



NOTES:

1. WIDTH OF PAVEMENT REMOVAL SHALL BE MINIMUM 2' EITHER SIDE OF UTILITY CENTERLINE AND TO THE NEXT PAVEMENT PANEL OR JOINT LIMIT WHENEVER FEASIBLE.
2. THICKNESS OF ALL REPLACEMENT COURSES SHALL BE EQUAL TO EXISTING BUT SHALL NOT BE LESS THAN INDICATED.
3. BASE COURSE SHALL BE PORTLAND CEMENT CONCRETE TO REPLACE EXISTING CONCRETE BASE, AND SHALL BE ASPHALTIC CONCRETE BASE TO REPLACE ALL OTHER BASE MATERIALS.
4. FULL DEPTH SAWCUTS SHALL BE MADE AROUND THE PERIMETER OF THE AREA TO BE PATCHED AND SHALL BE MADE AT EXISTING JOINTS AND PERPENDICULAR TO THE PAVEMENT EDGE AND TO THE CENTERLINE OF THE PAVEMENT.
5. SAWCUTS THAT EXTEND OUTSIDE THE AREA OF REMOVAL AND REPLACEMENT SHALL BE FILLED WITH AN EPOXY-BASED GROUT APPROVED BY THE ENGINEER.
6. EXISTING CONCRETE PAVEMENT SHALL BE SAWCUT AND REMOVED TO NEAREST JOINT TO PREVENT PARTIAL PANEL REMOVAL.
7. CONCRETE REPLACEMENT PANELS SHALL BE SIZED TO MATCH THE EXISTING CONCRETE PANEL SIZES WHENEVER FEASIBLE AND SHALL HAVE A MAXIMUM LENGTH/WIDTH RATIO OF 1.25.
8. SAWCUTS THAT EXTEND OUTSIDE THE AREA OF REMOVAL AND REPLACEMENT SHALL BE FILLED WITH AN EPOXY-BASED GROUT APPROVED BY THE ENGINEER.

## PAVEMENT REMOVAL AND REPLACEMENT FOR UTILITY TRENCH

SCALE: N.T.S.

FOR PERMITTING PURPOSES ONLY

DUKE ENERGY WARNINGS ARE CONSIDERED CONFIDENTIAL. (DM-1086) \* DRAWING IS CURRENT ONLY THROUGH THE LATEST REVISION UNIT. \* DRAWING IS CURRENT ONLY THROUGH THE LATEST REVISION UNIT. \* USE DIMENSIONS ONLY.

PROPRIETARY & CONFIDENTIAL ALL RIGHTS RESERVED. DO NOT SCALE THIS DRAWING. \* USE DIMENSIONS ONLY.

TO INSURE THERE IS NO RISK OF INAPPROPRIATE DISCLOSURE ALL PREVIOUS PAPER COPIES OF THIS DRAWING MUST BE DESTROYED IN ACCORDANCE WITH RECORDS & INFO. MANAGEMENT (RIM) POLICY 1001

PROFESSIONAL ENGINEER'S SEAL

PROFESSIONAL ENGINEER'S SIGNATURE

PROFESSIONAL ENGINEER'S LICENSE NUMBER

PROFESSIONAL ENGINEER'S EXPIRATION DATE

PROFESSIONAL ENGINEER'S FIRM NAME

PROFESSIONAL ENGINEER'S FIRM ADDRESS

PROFESSIONAL ENGINEER'S FIRM CITY

PROFESSIONAL ENGINEER'S FIRM STATE

PROFESSIONAL ENGINEER'S FIRM ZIP

PROFESSIONAL ENGINEER'S FIRM PHONE

PROFESSIONAL ENGINEER'S FIRM FAX

PROFESSIONAL ENGINEER'S FIRM E-MAIL

PROFESSIONAL ENGINEER'S FIRM WEBSITE

PROFESSIONAL ENGINEER'S FIRM SOCIAL MEDIA

PROFESSIONAL ENGINEER'S FIRM OTHER

PROFESSIONAL ENGINEER'S FIRM COMMENTS

PROFESSIONAL ENGINEER'S FIRM NOTES

PROFESSIONAL ENGINEER'S FIRM ADDITIONAL

PROFESSIONAL ENGINEER'S FIRM FINAL

PROFESSIONAL ENGINEER'S FIRM APPROVED

PROFESSIONAL ENGINEER'S FIRM REVIEWED

PROFESSIONAL ENGINEER'S FIRM CHECKED

PROFESSIONAL ENGINEER'S FIRM DESIGNED

PROFESSIONAL ENGINEER'S FIRM DRAUGHTSMAN

PROFESSIONAL ENGINEER'S FIRM DATE

PROFESSIONAL ENGINEER'S FIRM SCALE

PROFESSIONAL ENGINEER'S FIRM SHEET

PROFESSIONAL ENGINEER'S FIRM TOTAL

PROFESSIONAL ENGINEER'S FIRM PROJECT

PROFESSIONAL ENGINEER'S FIRM LOCATION

PROFESSIONAL ENGINEER'S FIRM CLIENT

PROFESSIONAL ENGINEER'S FIRM CONTRACT

PROFESSIONAL ENGINEER'S FIRM AGREEMENT

PROFESSIONAL ENGINEER'S FIRM SPECIFICATIONS

PROFESSIONAL ENGINEER'S FIRM DRAWINGS

PROFESSIONAL ENGINEER'S FIRM CALCULATIONS

PROFESSIONAL ENGINEER'S FIRM REPORTS

PROFESSIONAL ENGINEER'S FIRM PRESENTATIONS

PROFESSIONAL ENGINEER'S FIRM OTHER

PROFESSIONAL ENGINEER'S FIRM COMMENTS

PROFESSIONAL ENGINEER'S FIRM NOTES

PROFESSIONAL ENGINEER'S FIRM ADDITIONAL

PROFESSIONAL ENGINEER'S FIRM FINAL

PROFESSIONAL ENGINEER'S FIRM APPROVED

PROFESSIONAL ENGINEER'S FIRM REVIEWED

PROFESSIONAL ENGINEER'S FIRM CHECKED

PROFESSIONAL ENGINEER'S FIRM DESIGNED

PROFESSIONAL ENGINEER'S FIRM DRAUGHTSMAN

PROFESSIONAL ENGINEER'S FIRM DATE

PROFESSIONAL ENGINEER'S FIRM SCALE

PROFESSIONAL ENGINEER'S FIRM SHEET

PROFESSIONAL ENGINEER'S FIRM TOTAL

PROFESSIONAL ENGINEER'S FIRM PROJECT

PROFESSIONAL ENGINEER'S FIRM LOCATION

PROFESSIONAL ENGINEER'S FIRM CLIENT

PROFESSIONAL ENGINEER'S FIRM CONTRACT

PROFESSIONAL ENGINEER'S FIRM AGREEMENT

PROFESSIONAL ENGINEER'S FIRM SPECIFICATIONS

PROFESSIONAL ENGINEER'S FIRM DRAWINGS

PROFESSIONAL ENGINEER'S FIRM CALCULATIONS

PROFESSIONAL ENGINEER'S FIRM REPORTS

PROFESSIONAL ENGINEER'S FIRM PRESENTATIONS

PROFESSIONAL ENGINEER'S FIRM OTHER

PROFESSIONAL ENGINEER'S FIRM COMMENTS

PROFESSIONAL ENGINEER'S FIRM NOTES

PROFESSIONAL ENGINEER'S FIRM ADDITIONAL

PROFESSIONAL ENGINEER'S FIRM FINAL

PROFESSIONAL ENGINEER'S FIRM APPROVED

PROFESSIONAL ENGINEER'S FIRM REVIEWED

PROFESSIONAL ENGINEER'S FIRM CHECKED

PROFESSIONAL ENGINEER'S FIRM DESIGNED

PROFESSIONAL ENGINEER'S FIRM DRAUGHTSMAN

PROFESSIONAL ENGINEER'S FIRM DATE

PROFESSIONAL ENGINEER'S FIRM SCALE

PROFESSIONAL ENGINEER'S FIRM SHEET

PROFESSIONAL ENGINEER'S FIRM TOTAL

PROFESSIONAL ENGINEER'S FIRM PROJECT

PROFESSIONAL ENGINEER'S FIRM LOCATION

PROFESSIONAL ENGINEER'S FIRM CLIENT

PROFESSIONAL ENGINEER'S FIRM CONTRACT

PROFESSIONAL ENGINEER'S FIRM AGREEMENT

PROFESSIONAL ENGINEER'S FIRM SPECIFICATIONS

PROFESSIONAL ENGINEER'S FIRM DRAWINGS

PROFESSIONAL ENGINEER'S FIRM CALCULATIONS

PROFESSIONAL ENGINEER'S FIRM REPORTS

PROFESSIONAL ENGINEER'S FIRM PRESENTATIONS

PROFESSIONAL ENGINEER'S FIRM OTHER

PROFESSIONAL ENGINEER'S FIRM COMMENTS

PROFESSIONAL ENGINEER'S FIRM NOTES

PROFESSIONAL ENGINEER'S FIRM ADDITIONAL

PROFESSIONAL ENGINEER'S FIRM FINAL

PROFESSIONAL ENGINEER'S FIRM APPROVED

PROFESSIONAL ENGINEER'S FIRM REVIEWED

PROFESSIONAL ENGINEER'S FIRM CHECKED

PROFESSIONAL ENGINEER'S FIRM DESIGNED

PROFESSIONAL ENGINEER'S FIRM DRAUGHTSMAN

PROFESSIONAL ENGINEER'S FIRM DATE

PROFESSIONAL ENGINEER'S FIRM SCALE

PROFESSIONAL ENGINEER'S FIRM SHEET

PROFESSIONAL ENGINEER'S FIRM TOTAL

PROFESSIONAL ENGINEER'S FIRM PROJECT

PROFESSIONAL ENGINEER'S FIRM LOCATION

PROFESSIONAL ENGINEER'S FIRM CLIENT

PROFESSIONAL ENGINEER'S FIRM CONTRACT

PROFESSIONAL ENGINEER'S FIRM AGREEMENT

PROFESSIONAL ENGINEER'S FIRM SPECIFICATIONS

PROFESSIONAL ENGINEER'S FIRM DRAWINGS

PROFESSIONAL ENGINEER'S FIRM CALCULATIONS

PROFESSIONAL ENGINEER'S FIRM REPORTS

PROFESSIONAL ENGINEER'S FIRM PRESENTATIONS

PROFESSIONAL ENGINEER'S FIRM OTHER

PROFESSIONAL ENGINEER'S FIRM COMMENTS

PROFESSIONAL ENGINEER'S FIRM NOTES

PROFESSIONAL ENGINEER'S FIRM ADDITIONAL

PROFESSIONAL ENGINEER'S FIRM FINAL

PROFESSIONAL ENGINEER'S FIRM APPROVED

PROFESSIONAL ENGINEER'S FIRM REVIEWED

PROFESSIONAL ENGINEER'S FIRM CHECKED

PROFESSIONAL ENGINEER'S FIRM DESIGNED

PROFESSIONAL ENGINEER'S FIRM DRAUGHTSMAN

PROFESSIONAL ENGINEER'S FIRM DATE

PROFESSIONAL ENGINEER'S FIRM SCALE

PROFESSIONAL ENGINEER'S FIRM SHEET

PROFESSIONAL ENGINEER'S FIRM TOTAL

PROFESSIONAL ENGINEER'S FIRM PROJECT

PROFESSIONAL ENGINEER'S FIRM LOCATION

PROFESSIONAL ENGINEER'S FIRM CLIENT

PROFESSIONAL ENGINEER'S FIRM CONTRACT

PROFESSIONAL ENGINEER'S FIRM AGREEMENT

PROFESSIONAL ENGINEER'S FIRM SPECIFICATIONS

PROFESSIONAL ENGINEER'S FIRM DRAWINGS

PROFESSIONAL ENGINEER'S FIRM CALCULATIONS

PROFESSIONAL ENGINEER'S FIRM REPORTS

PROFESSIONAL ENGINEER'S FIRM PRESENTATIONS

PROFESSIONAL ENGINEER'S FIRM OTHER

PROFESSIONAL ENGINEER'S FIRM COMMENTS

PROFESSIONAL ENGINEER'S FIRM NOTES

PROFESSIONAL ENGINEER'S FIRM ADDITIONAL

PROFESSIONAL ENGINEER'S FIRM FINAL

PROFESSIONAL ENGINEER'S FIRM APPROVED

PROFESSIONAL ENGINEER'S FIRM REVIEWED

PROFESSIONAL ENGINEER'S FIRM CHECKED

PROFESSIONAL ENGINEER'S FIRM DESIGNED

PROFESSIONAL ENGINEER'S FIRM DRAUGHTSMAN

PROFESSIONAL ENGINEER'S FIRM DATE

PROFESSIONAL ENGINEER'S FIRM SCALE

PROFESSIONAL ENGINEER'S FIRM SHEET

PROFESSIONAL ENGINEER'S FIRM TOTAL

PROFESSIONAL ENGINEER'S FIRM PROJECT

PROFESSIONAL ENGINEER'S FIRM LOCATION

PROFESSIONAL ENGINEER'S FIRM CLIENT

PROFESSIONAL ENGINEER'S FIRM CONTRACT

PROFESSIONAL ENGINEER'S FIRM AGREEMENT

PROFESSIONAL ENGINEER'S FIRM SPECIFICATIONS

PROFESSIONAL ENGINEER'S FIRM DRAWINGS

PROFESSIONAL ENGINEER'S FIRM CALCULATIONS

PROFESSIONAL ENGINEER'S FIRM REPORTS

PROFESSIONAL ENGINEER'S FIRM PRESENTATIONS

PROFESSIONAL ENGINEER'S FIRM OTHER

PROFESSIONAL ENGINEER'S FIRM COMMENTS

PROFESSIONAL ENGINEER'S FIRM NOTES

PROFESSIONAL ENGINEER'S FIRM ADDITIONAL

PROFESSIONAL ENGINEER'S FIRM FINAL

PROFESSIONAL ENGINEER'S FIRM APPROVED

PROFESSIONAL ENGINEER'S FIRM REVIEWED

PROFESSIONAL ENGINEER'S FIRM CHECKED

PROFESSIONAL ENGINEER'S FIRM DESIGNED

PROFESSIONAL ENGINEER'S FIRM DRAUGHTSMAN

PROFESSIONAL ENGINEER'S FIRM DATE

PROFESSIONAL ENGINEER'S FIRM SCALE

PROFESSIONAL ENGINEER'S FIRM SHEET

PROFESSIONAL ENGINEER'S FIRM TOTAL

PROFESSIONAL ENGINEER'S FIRM PROJECT

PROFESSIONAL ENGINEER'S FIRM LOCATION

PROFESSIONAL ENGINEER'S FIRM CLIENT

PROFESSIONAL ENGINEER'S FIRM CONTRACT

PROFESSIONAL ENGINEER'S FIRM AGREEMENT

PROFESSIONAL ENGINEER'S FIRM SPECIFICATIONS

PROFESSIONAL ENGINEER'S FIRM DRAWINGS

PROFESSIONAL ENGINEER'S FIRM CALCULATIONS

PROFESSIONAL ENGINEER'S FIRM REPORTS

PROFESSIONAL ENGINEER'S FIRM PRESENTATIONS

PROFESSIONAL ENGINEER'S FIRM OTHER

PROFESSIONAL ENGINEER'S FIRM COMMENTS

PROFESSIONAL ENGINEER'S FIRM NOTES

PROFESSIONAL ENGINEER'S FIRM ADDITIONAL

PROFESSIONAL ENGINEER'S FIRM FINAL

PROFESSIONAL ENGINEER'S FIRM APPROVED

PROFESSIONAL ENGINEER'S FIRM REVIEWED

PROFESSIONAL ENGINEER'S FIRM CHECKED

PROFESSIONAL ENGINEER'S FIRM DESIGNED

PROFESSIONAL ENGINEER'S FIRM DRAUGHTSMAN

PROFESSIONAL ENGINEER'S FIRM DATE

PROFESSIONAL ENGINEER'S FIRM SCALE

PROFESSIONAL ENGINEER'S FIRM SHEET

PROFESSIONAL ENGINEER'S FIRM TOTAL

PROFESSIONAL ENGINEER'S FIRM PROJECT

PROFESSIONAL ENGINEER'S FIRM LOCATION

PROFESSIONAL ENGINEER'S FIRM CLIENT

PROFESSIONAL ENGINEER'S FIRM CONTRACT

PROFESSIONAL ENGINEER'S FIRM AGREEMENT

PROFESSIONAL ENGINEER'S FIRM SPECIFICATIONS

PROFESSIONAL ENGINEER'S FIRM DRAWINGS

PROFESSIONAL ENGINEER'S FIRM CALCULATIONS

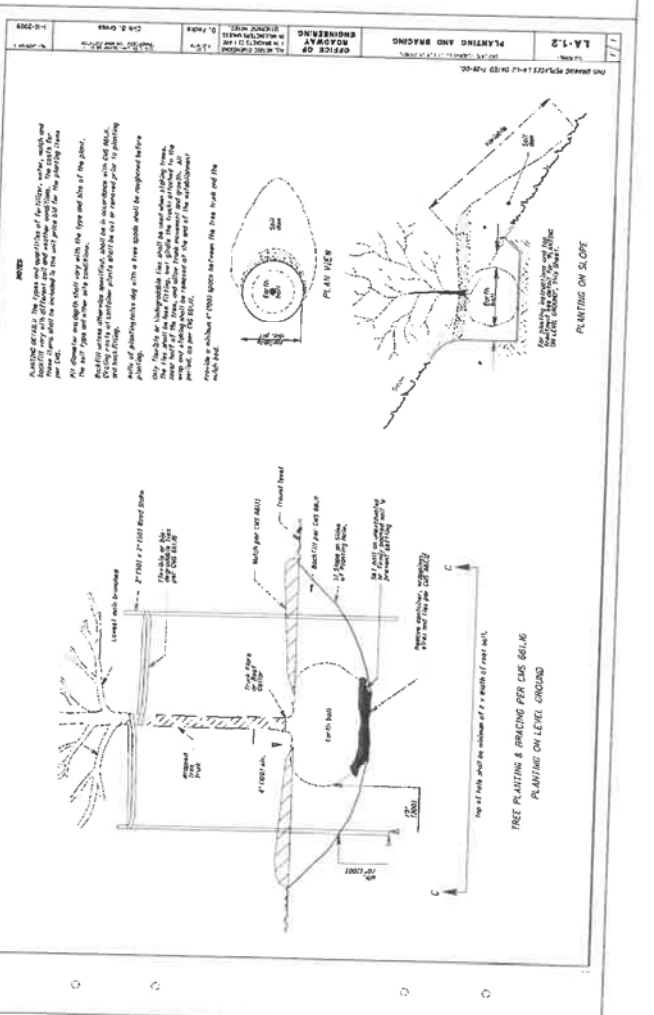
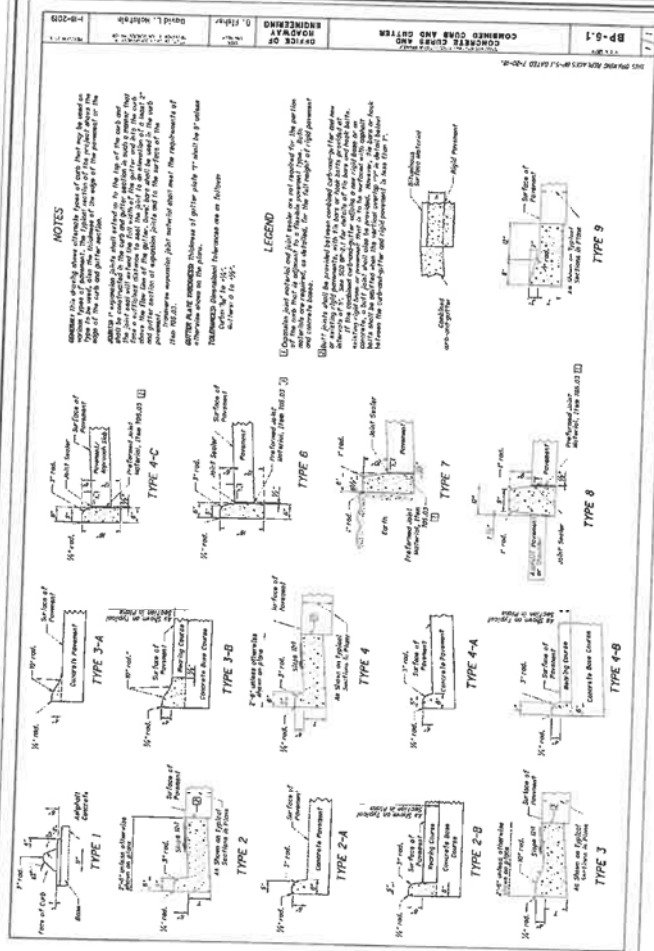
PROFESSIONAL ENGINEER'S FIRM REPORTS

PROFESSIONAL ENGINEER'S FIRM PRESENTATIONS

PROFESSIONAL ENGINEER'S FIRM OTHER

PROFESSIONAL ENGINEER'S FIRM COMMENTS

PROFESSIONAL ENGINEER'S FIRM NOTES



<b>FOR PERMITTING PURPOSES ONLY</b>		<b>C350 PROJECT RESTORATION DETAILS 2 HAMILTON COUNTY, OHIO</b>		<b>DUKE ENERGY</b>		<b>PROFESSIONAL ENGINEER'S STAMP</b>	
<b>REVISIONS</b>		<b>DESCRIPTION</b>		<b>DATE</b>		<b>BY</b>	
1. ISSUED FOR PERMITTING		1. C350 PROJECT RESTORATION DETAILS 2 HAMILTON COUNTY, OHIO		1. 01/15/2020		1. [Signature]	
<b>REVISIONS</b>		<b>DESCRIPTION</b>		<b>DATE</b>		<b>BY</b>	
2. [Blank]		2. [Blank]		2. [Blank]		2. [Blank]	
<b>REVISIONS</b>		<b>DESCRIPTION</b>		<b>DATE</b>		<b>BY</b>	
3. [Blank]		3. [Blank]		3. [Blank]		3. [Blank]	
<b>REVISIONS</b>		<b>DESCRIPTION</b>		<b>DATE</b>		<b>BY</b>	
4. [Blank]		4. [Blank]		4. [Blank]		4. [Blank]	
<b>REVISIONS</b>		<b>DESCRIPTION</b>		<b>DATE</b>		<b>BY</b>	
5. [Blank]		5. [Blank]		5. [Blank]		5. [Blank]	
<b>REVISIONS</b>		<b>DESCRIPTION</b>		<b>DATE</b>		<b>BY</b>	
6. [Blank]		6. [Blank]		6. [Blank]		6. [Blank]	
<b>REVISIONS</b>		<b>DESCRIPTION</b>		<b>DATE</b>		<b>BY</b>	
7. [Blank]		7. [Blank]		7. [Blank]		7. [Blank]	
<b>REVISIONS</b>		<b>DESCRIPTION</b>		<b>DATE</b>		<b>BY</b>	
8. [Blank]		8. [Blank]		8. [Blank]		8. [Blank]	
<b>REVISIONS</b>		<b>DESCRIPTION</b>		<b>DATE</b>		<b>BY</b>	
9. [Blank]		9. [Blank]		9. [Blank]		9. [Blank]	
<b>REVISIONS</b>		<b>DESCRIPTION</b>		<b>DATE</b>		<b>BY</b>	
10. [Blank]		10. [Blank]		10. [Blank]		10. [Blank]	
<b>REVISIONS</b>		<b>DESCRIPTION</b>		<b>DATE</b>		<b>BY</b>	
11. [Blank]		11. [Blank]		11. [Blank]		11. [Blank]	
<b>REVISIONS</b>		<b>DESCRIPTION</b>		<b>DATE</b>		<b>BY</b>	
12. [Blank]		12. [Blank]		12. [Blank]		12. [Blank]	
<b>REVISIONS</b>		<b>DESCRIPTION</b>		<b>DATE</b>		<b>BY</b>	
13. [Blank]		13. [Blank]		13. [Blank]		13. [Blank]	
<b>REVISIONS</b>		<b>DESCRIPTION</b>		<b>DATE</b>		<b>BY</b>	
14. [Blank]		14. [Blank]		14. [Blank]		14. [Blank]	
<b>REVISIONS</b>		<b>DESCRIPTION</b>		<b>DATE</b>		<b>BY</b>	
15. [Blank]		15. [Blank]		15. [Blank]		15. [Blank]	
<b>REVISIONS</b>		<b>DESCRIPTION</b>		<b>DATE</b>		<b>BY</b>	
16. [Blank]		16. [Blank]		16. [Blank]		16. [Blank]	
<b>REVISIONS</b>		<b>DESCRIPTION</b>		<b>DATE</b>		<b>BY</b>	
17. [Blank]		17. [Blank]		17. [Blank]		17. [Blank]	
<b>REVISIONS</b>		<b>DESCRIPTION</b>		<b>DATE</b>		<b>BY</b>	
18. [Blank]		18. [Blank]		18. [Blank]		18. [Blank]	
<b>REVISIONS</b>		<b>DESCRIPTION</b>		<b>DATE</b>		<b>BY</b>	
19. [Blank]		19. [Blank]		19. [Blank]		19. [Blank]	
<b>REVISIONS</b>		<b>DESCRIPTION</b>		<b>DATE</b>		<b>BY</b>	
20. [Blank]		20. [Blank]		20. [Blank]		20. [Blank]	
<b>REVISIONS</b>		<b>DESCRIPTION</b>		<b>DATE</b>		<b>BY</b>	
21. [Blank]		21. [Blank]		21. [Blank]		21. [Blank]	
<b>REVISIONS</b>		<b>DESCRIPTION</b>		<b>DATE</b>		<b>BY</b>	
22. [Blank]		22. [Blank]		22. [Blank]		22. [Blank]	
<b>REVISIONS</b>		<b>DESCRIPTION</b>		<b>DATE</b>		<b>BY</b>	
23. [Blank]		23. [Blank]		23. [Blank]		23. [Blank]	
<b>REVISIONS</b>		<b>DESCRIPTION</b>		<b>DATE</b>		<b>BY</b>	
24. [Blank]		24. [Blank]		24. [Blank]		24. [Blank]	
<b>REVISIONS</b>		<b>DESCRIPTION</b>		<b>DATE</b>		<b>BY</b>	
25. [Blank]		25. [Blank]		25. [Blank]		25. [Blank]	
<b>REVISIONS</b>		<b>DESCRIPTION</b>		<b>DATE</b>		<b>BY</b>	
26. [Blank]		26. [Blank]		26. [Blank]		26. [Blank]	
<b>REVISIONS</b>		<b>DESCRIPTION</b>		<b>DATE</b>		<b>BY</b>	
27. [Blank]		27. [Blank]		27. [Blank]		27. [Blank]	
<b>REVISIONS</b>		<b>DESCRIPTION</b>		<b>DATE</b>		<b>BY</b>	
28. [Blank]		28. [Blank]		28. [Blank]		28. [Blank]	
<b>REVISIONS</b>		<b>DESCRIPTION</b>		<b>DATE</b>		<b>BY</b>	
29. [Blank]		29. [Blank]		29. [Blank]		29. [Blank]	
<b>REVISIONS</b>		<b>DESCRIPTION</b>		<b>DATE</b>		<b>BY</b>	
30. [Blank]		30. [Blank]		30. [Blank]		30. [Blank]	
<b>REVISIONS</b>		<b>DESCRIPTION</b>		<b>DATE</b>		<b>BY</b>	
31. [Blank]		31. [Blank]		31. [Blank]		31. [Blank]	
<b>REVISIONS</b>		<b>DESCRIPTION</b>		<b>DATE</b>		<b>BY</b>	
32. [Blank]		32. [Blank]		32. [Blank]		32. [Blank]	
<b>REVISIONS</b>		<b>DESCRIPTION</b>		<b>DATE</b>		<b>BY</b>	
33. [Blank]		33. [Blank]		33. [Blank]		33. [Blank]	
<b>REVISIONS</b>		<b>DESCRIPTION</b>		<b>DATE</b>		<b>BY</b>	
34. [Blank]		34. [Blank]		34. [Blank]		34. [Blank]	
<b>REVISIONS</b>		<b>DESCRIPTION</b>		<b>DATE</b>		<b>BY</b>	
35. [Blank]		35. [Blank]		35. [Blank]		35. [Blank]	
<b>REVISIONS</b>		<b>DESCRIPTION</b>		<b>DATE</b>		<b>BY</b>	
36. [Blank]		36. [Blank]		36. [Blank]		36. [Blank]	
<b>REVISIONS</b>		<b>DESCRIPTION</b>		<b>DATE</b>		<b>BY</b>	
37. [Blank]		37. [Blank]		37. [Blank]		37. [Blank]	
<b>REVISIONS</b>		<b>DESCRIPTION</b>		<b>DATE</b>		<b>BY</b>	
38. [Blank]		38. [Blank]		38. [Blank]		38. [Blank]	
<b>REVISIONS</b>		<b>DESCRIPTION</b>		<b>DATE</b>		<b>BY</b>	
39. [Blank]		39. [Blank]		39. [Blank]		39. [Blank]	
<b>REVISIONS</b>		<b>DESCRIPTION</b>		<b>DATE</b>		<b>BY</b>	
40. [Blank]		40. [Blank]		40. [Blank]		40. [Blank]	
<b>REVISIONS</b>		<b>DESCRIPTION</b>		<b>DATE</b>		<b>BY</b>	
41. [Blank]		41. [Blank]		41. [Blank]		41. [Blank]	
<b>REVISIONS</b>		<b>DESCRIPTION</b>		<b>DATE</b>		<b>BY</b>	
42. [Blank]		42. [Blank]		42. [Blank]		42. [Blank]	
<b>REVISIONS</b>		<b>DESCRIPTION</b>		<b>DATE</b>		<b>BY</b>	
43. [Blank]		43. [Blank]		43. [Blank]		43. [Blank]	
<b>REVISIONS</b>		<b>DESCRIPTION</b>		<b>DATE</b>		<b>BY</b>	
44. [Blank]		44. [Blank]		44. [Blank]		44. [Blank]	
<b>REVISIONS</b>		<b>DESCRIPTION</b>		<b>DATE</b>		<b>BY</b>	
45. [Blank]		45. [Blank]		45. [Blank]		45. [Blank]	
<b>REVISIONS</b>		<b>DESCRIPTION</b>		<b>DATE</b>		<b>BY</b>	
46. [Blank]		46. [Blank]		46. [Blank]		46. [Blank]	
<b>REVISIONS</b>		<b>DESCRIPTION</b>		<b>DATE</b>		<b>BY</b>	
47. [Blank]		47. [Blank]		47. [Blank]		47. [Blank]	
<b>REVISIONS</b>		<b>DESCRIPTION</b>		<b>DATE</b>		<b>BY</b>	
48. [Blank]		48. [Blank]		48. [Blank]		48. [Blank]	
<b>REVISIONS</b>		<b>DESCRIPTION</b>		<b>DATE</b>		<b>BY</b>	
49. [Blank]		49. [Blank]		49. [Blank]		49. [Blank]	
<b>REVISIONS</b>		<b>DESCRIPTION</b>		<b>DATE</b>		<b>BY</b>	
50. [Blank]		50. [Blank]		50. [Blank]		50. [Blank]	
<b>REVISIONS</b>		<b>DESCRIPTION</b>		<b>DATE</b>		<b>BY</b>	
51. [Blank]		51. [Blank]		51. [Blank]		51. [Blank]	
<b>REVISIONS</b>		<b>DESCRIPTION</b>		<b>DATE</b>		<b>BY</b>	
52. [Blank]		52. [Blank]		52. [Blank]		52. [Blank]	
<b>REVISIONS</b>		<b>DESCRIPTION</b>		<b>DATE</b>		<b>BY</b>	
53. [Blank]		53. [Blank]		53. [Blank]		53. [Blank]	
<b>REVISIONS</b>		<b>DESCRIPTION</b>		<b>DATE</b>		<b>BY</b>	
54. [Blank]		54. [Blank]		54. [Blank]		54. [Blank]	
<b>REVISIONS</b>		<b>DESCRIPTION</b>		<b>DATE</b>		<b>BY</b>	
55. [Blank]		55. [Blank]		55. [Blank]		55. [Blank]	
<b>REVISIONS</b>		<b>DESCRIPTION</b>		<b>DATE</b>		<b>BY</b>	
56. [Blank]		56. [Blank]		56. [Blank]		56. [Blank]	
<b>REVISIONS</b>		<b>DESCRIPTION</b>		<b>DATE</b>		<b>BY</b>	
57. [Blank]		57. [Blank]		57. [Blank]		57. [Blank]	
<b>REVISIONS</b>		<b>DESCRIPTION</b>		<b>DATE</b>		<b>BY</b>	
58. [Blank]		58. [Blank]		58. [Blank]		58. [Blank]	
<b>REVISIONS</b>		<b>DESCRIPTION</b>		<b>DATE</b>		<b>BY</b>	
59. [Blank]		59. [Blank]		59. [Blank]		59. [Blank]	
<b>REVISIONS</b>		<b>DESCRIPTION</b>		<b>DATE</b>		<b>BY</b>	
60. [Blank]		60. [Blank]		60. [Blank]		60. [Blank]	
<b>REVISIONS</b>		<b>DESCRIPTION</b>		<b>DATE</b>		<b>BY</b>	
61. [Blank]		61. [Blank]		61. [Blank]		61. [Blank]	
<b>REVISIONS</b>		<b>DESCRIPTION</b>		<b>DATE</b>		<b>BY</b>	
62. [Blank]		62. [Blank]		62. [Blank]		62. [Blank]	
<b>REVISIONS</b>		<b>DESCRIPTION</b>		<b>DATE</b>		<b>BY</b>	
63. [Blank]		63. [Blank]		63. [Blank]		63. [Blank]	
<b>REVISIONS</b>		<b>DESCRIPTION</b>		<b>DATE</b>		<b>BY</b>	
64. [Blank]		64. [Blank]		64. [Blank]		64. [Blank]	
<b>REVISIONS</b>		<b>DESCRIPTION</b>		<b>DATE</b>		<b>BY</b>	
65. [Blank]		65. [Blank]		65. [Blank]		65. [Blank]	
<b>REVISIONS</b>		<b>DESCRIPTION</b>		<b>DATE</b>		<b>BY</b>	
66. [Blank]		66. [Blank]		66. [Blank]		66. [Blank]	
<b>REVISIONS</b>		<b>DESCRIPTION</b>		<b>DATE</b>		<b>BY</b>	
67. [Blank]		67. [Blank]		67. [Blank]		67. [Blank]	
<b>REVISIONS</b>		<b>DESCRIPTION</b>		<b>DATE</b>		<b>BY</b>	
68. [Blank]		68. [Blank]		68. [Blank]		68. [Blank]	
<b>REVISIONS</b>		<b>DESCRIPTION</b>		<b>DATE</b>		<b>BY</b>	
69. [Blank]		69. [Blank]		69. [Blank]		69. [Blank]	

**This foregoing document was electronically filed with the Public Utilities**

**Commission of Ohio Docketing Information System on**

**4/17/2020 11:31:32 AM**

**in**

**Case No(s). 16-0253-GA-BTX**

Summary: Correspondence Cincinnati Permit TPZ2002739 Losantiville Avenue Bore  
electronically filed by Carys Cochern on behalf of Duke Energy