

# Memo

**To:** Docketing Division  
**From:** Jill Henry, Rail Specialist, Rail Division  
**Cc:** PUCO Legal Department  
**Date:** 2/4/20

**Re:** PUCO Case No. 20-358-RR-FED- In the Matter of a Request for Upgrades to the Active Warning Devices at the Norfolk Southern Railway Crossing, Phillipi Road, DOT#513-251M, in Franklin County, Ohio.

---

On August 21, 2019, the Ohio Rail Development Commission (ORDC) authorized funding for Norfolk Southern Railway to upgrade the flashing lights and gates at Phillipi Road, DOT#513-251M, in Franklin County, Ohio. The crossing was surveyed, on April 29, 2019, and found to warrant the upgrade. The electric utility provider for this crossing is AEP-Ohio.

The project will be paid for with federal funds and is actual cost. The plans and estimates in the amount of \$569,828.00 have been approved. Construction may commence at once. **Staff requests a Finding & Order with completion of the project in nine months.** Staff requests that the following language be incorporated in the Finding & Order:

**It is expected that all work necessary for FHWA acceptance of the warning devices will be completed by the in-service due date and that the railroad will be responsible for this work. This work includes, but is not limited to:**

- **Any ancillary work to make the warning devices function as designed and visible to the roadway user, and**
- **MUTCD compliance, including minor roadway work if necessary.**

**Please serve the following parties of record:**

Norfolk Southern Railway Company  
Kurt Young  
Public Projects Engineer  
1200 Peachtree Street NE  
Box 123  
Atlanta, GA 30309-3597

Norfolk Southern Railway Company  
Cayela Wimberly  
Director Grade Crossing Safety  
1200 Peachtree Street NE  
Atlanta, GA 30309-3597

Eastman & Smith LTD.  
Casey Talbott  
Attorney for Norfolk Southern  
One SeaGate 24<sup>th</sup> Floor  
P.O. Box 10032  
Toledo, OH 43699-0032

Ohio Rail Development Commission  
Cathy Stout  
Safety Manager  
1980 West Broad Street  
Mail Stop #3140  
Columbus, OH 43223

Franklin County Engineer  
Cornell Robertson  
County Engineer  
970 Dublin Road  
Columbus, Ohio 43215

AEP-Ohio

**OHIO RAIL DEVELOPMENT COMMISSION  
INTER-OFFICE COMMUNICATION**

**TO:** Randall Schumacher, Chief, Motor Carrier & Rail Enforcement, PUCO

**FROM:** Cathy Stout, Manager, Safety Section, ORDC

**BY:** Greg Gronbach, Project Manager, Safety Section, ORDC

**SUBJECT:** Franklin Co, Phillipi Rd/CR26, DOT# 513251M, PID# 110493

**DATE:** December 13, 2019

---


The Ohio Rail Development Commission (ORDC) established a diagnostic survey at the subject location on April 29, 2019. The Public Utilities Commission of Ohio (PUCO) attended the review. The Diagnostic Team recommended the modification/upgrade of warning devices - flashing lights and roadway gates. Copies of the diagnostic review form and the plan and estimate are attached.

PE has already been provided by the railroad. ORDC accepts the site plans and estimates as provided. Please issue a construction-only order for the project outlined above. ORDC recommends a nine (9) month construction timeline. This authorization is made with the stipulation and understanding that an approved estimate may contain entries for items or activities that may be cited and found to be ineligible for federal participation during the project audit.

It is expected that all work necessary for FHWA acceptance of the warning devices will be completed by the in-service due date and that the railroad will be responsible for this work. This work includes, but is not limited to:

- any ancillary work to make warning devices function as designed and visible to the roadway user, and
- MUTCD compliance – including minor roadway work if necessary.

Thank you for your assistance with these matters.

  
Greg Gronbach  
Project Manager

Attachment: Diagnostic Review  
Letter Agreement  
PE Authorization  
Plan, Estimate & Material List  
Construction Authorization

c: Jill Henry, Rail Division Specialist, PUCO  
ORDC Project Manager (file)



## Rail Development Commission

Mike DeWine, Governor  
Jon Husted, Lt. Governor

Mark Policinski, Chair

December 13, 2019

Norfolk Southern Railway  
Mr. Kurt Young  
Administrator Highway Grade Crossing Improvements  
1200 Peachtree Street  
Atlanta, GA 30309-3597

RE: Franklin Co, Phillipi Rd/CR26, DOT# 513251M, PID# 110493

Dear Mr. Young:

The plan dated October 15, 2019 and estimate dated November 8, 2019, for the referenced project is acceptable. **Please note that the railroad must provide ORDC with a plan stamped by a professional engineer licensed in the State of Ohio prior to acceptance and close out of the project.** Norfolk Southern Railway may proceed with the construction of the proposed grade crossing warning system in accordance with the abbreviated plan. This authorization is made with the stipulation and understanding that the approved estimate may contain entries for items or activities that may be cited and found to be ineligible for federal participation during the project audit. Reimbursement of eligible actual cost is limited to \$569,828.00. Additional costs must be approved in writing by the Ohio Rail Development Commission (ORDC) prior to being incurred. Emergency verbal authorizations by ORDC may be permitted and will be confirmed by ORDC in writing within ten (10) business days of the verbal approval.

This authorization is contingent upon Norfolk Southern Railway accepting the following instructions:

1. Norfolk Southern Railway's project foreman will furnish written notification five (5) working days prior to the date work will start at the project site to Greg Gronbach, ORDC, email [Gregory.Gronbach@dot.ohio.gov](mailto:Gregory.Gronbach@dot.ohio.gov), and to the Public Utilities Commission of Ohio at [Jill.henry@puc.state.oh.us](mailto:Jill.henry@puc.state.oh.us). Norfolk Southern Railway's project foreman will also notify the same of any stops and re-starts of the work activity and of the date work was completed for the project.
2. Norfolk Southern Railway will arrange for utilities to be located at the project site by the Ohio Utilities Protection Service (OUPS) prior to any construction activities at the site. Utilities that are not participating members of the service must be contacted directly by Norfolk Southern Railway.
3. Norfolk Southern Railway's project foremen will notify Greg Gronbach at 614-745-6760 (telephone) or [Gregory.Gronbach@dot.ohio.gov](mailto:Gregory.Gronbach@dot.ohio.gov) (email) of any changes in the scope of



work, cost overruns, material changes, etc. which are not included in the approved plan and estimate and secure approval of same before the work is performed.

4. Open cut of roadways is *not permitted* except in unusual circumstances and must be coordinated with the local highway authority and preapproved by ORDC.
5. Norfolk Southern Railway will furnish two (2) copies of each partial bill to ORDC. Please find the enclosed ODOT Purchase Order to reference when billing.
6. Norfolk Southern Railway will furnish two (2) copies of the final all-inclusive bill to ORDC stating the exact dates of starting and completing work, the initial and final dates of construction and location where the accounts may be audited.
7. This installation will include any ancillary work to make the warning devices function as designed and meet MUTCD.

Thank you for your assistance with these matters.

Sincerely,

  
Greg Gronbach  
Project Manager

C: Randall Schumacher, Chief, Motor Carrier & Rail Enforcement, PUCO  
Jill Henry, Rail Division Specialist, PUCO  
Susan Arduini, ORDC  
ORDC (file)



08-Nov-19

Detailed Estimate for Grade Crossing Warning Devices

City/State: COLUMBUS, OH  
MilePost: CJ-144.1  
State Proj. No.: PID#110493  
S&E Proj. No.: 10.3250  
Man Days: 270

Road: PHILLIPI RD.  
DOT/AAR: 513251M  
County: FRANKLIN  
File Number:

***Purchases - Others***	
Meals and Lodging:	\$38,423.16
Rental of Equipment:	\$52,524.32
(2 Trucks, 1 Backhoe w/ Trailer and 1 Pipe-Pusher for 45 Days)	
Construction Supervision Vehicle:	\$8,034.46
Purchases - Other Total:	\$98,981.94
***Material And Additives***	
Material Cost:	\$208,063.00
Sales and Use Tax:	\$16,645.00
Material Handling Freight:	\$20,806.28
Material Total:	\$245,514.28
***Labor And Additives***	
Labor Cost:	\$90,450.00
(6 man crew at \$2,010.00 a day for: 45 days)	
Payroll Tax & Overheads:	\$77,117.67
Preliminary Engineering:	\$31,343.84
Construction Supervision:	\$26,420.44
Labor Total:	\$225,331.95
Project Cost:	\$569,828.17
Scrap / Salvage Credit:	\$0.00
Project Total:	\$569,828.00

Estimated on: 08-Nov-19

Estimated by: q2suj

Estimate valid for 1 year from date of estimate



## Norfolk Southern Railway

### Highway Crossing Signalization Program - Material List

Do not substitute items without permission from S & E Engineering

City:	COLUMBUS
Road:	PHILLIPI RD.
Mile Post:	CJ-144.1
Drawing Number:	81131440
State ProjectNumber:	PID#110493
County:	FRANKLIN
A A R Number:	513251M
Project Number:	10.3250
File Number:	
New File Number:	CX0122938
WBS:	F-05965
Store Number:	
Supervisor:	A.D. BELL
Tax Code:	
Vendor to supply the following copies after pricing: 1 Set - Material Management with original Invoice 2 Sets - with plans shipped in car with material 1 Set - S&EGen. Supt. Construction w/copy of invoice	

Location: COLUMBUS				OH	S&E Proj. No.: 10.3250	AFE No.: F-05965	Drawing No.: 81131440	Vendor: Railroad Signal Design			
Store No.:					P.O.Number:	Date Required:	Date Shipped:				
Qty.	Class-Item-CD	UI	Price per Item	Total Price	Item Description	Quantity Shipped	Quantity Installed Date Quan.	Quantity Returned (Credit)	Special Instructions		
3	670-360693-4	EA	\$6.05	\$18.15	AAR/DOT NUMBER PLATE/DECAL, ORDER 3 PER PROJECT. 60 DAY LEAD TIME: SUPPLIED BY STRAN.						
1	165-006505-4	EA	\$1,410.25	\$1,410.25	AC SERVICE, COMPLETE LESS METER BASE, ASSEMBLED ON 30' POLE						
37	670-001196-4	EA	\$47.30	\$1,750.10	ARRESTER, LIGHTNING SOLID STATE ERICO P/N EPD2050F						
20	105-002620-4	EA	\$248.79	\$4,975.80	BATTERY, NICAD 340AH, MODEL SPL340						
1	670-503047-4	EA	\$214.50	\$214.50	BELL, CROSSING ELECTRONIC GENERAL SIGNAL, EB-3-360-5 CR 02-044350						
2	001-000011-4	EA	\$5,000.00	\$10,000.00	BERM WALL, 4' HIGH X 5' WIDE, 35LF						
2	670-980689-4	EA	\$74.80	\$149.60	BRACKET HIGH WIND, (RIGID 3'), WIG- 191036, WALRUS TUSK TYPE						
2	670-561375-4	EA	\$1,197.90	\$2,395.80	BRACKET, GATE SAVER, NEG385102GS, SPRING LOADED SWING AWAY ADAPTER FOR FIBERGLASS/ALUMINUM GATES, USE WITH GATE 38' AND LESS						
600	465-939422-4	LF	\$3.01	\$1,806.00	CABLE, UG 12 CONDUCTOR NO 14 AWG SOLID EACH CONDUCTOR WITH 5/64 IN INSULATION 10 MIL						
600	465-292862-4	LF	\$1.36	\$816.00	CABLE, UG 2-6 TWISTED, S-23 OKONITE 113-12-3933 SOLID TINNED CONDUCTOR						
500	465-292929-4	LF	\$4.12	\$2,060.00	CABLE, UG 5 COND. NO. 6 AWG SOLID COPPER CABLE TO MEET NS CORP. SPEC. FOR SIGNAL						
350	465-791835-4	FT	\$3.84	\$1,344.00	CABLE, UG AC ENTRANCE 3C#6-7X OKONITE FMF-L 094-078 TR W/G 1 X 8 7X W010 BRZ TAPE 600V PRODUCT CODE 206-11-6070						
1	670-073679-4	EA	\$5,687.40	\$5,687.40	CANTILEVER, WT/F ARM 26' W/WALKWAY KIT SAFTRAN #071294-26NS2						
1	670-078365-4	EA	\$5,683.82	\$5,683.82	CANTILEVER, WT/F ARM 28' W/WALKWAY KIT SAFTRAN #071294-28NS2						
1	670-010671-4	EA	\$731.50	\$731.50	CHARGER, BATTERY CRAGG MODEL 40 DTC-12V, 40 AMP, P/N 520940						
1	670-010672-4	EA	\$951.50	\$951.50	CHARGER, BATTERY CRAGG MODEL 60 DTC-12V, 60 AMP, P/N 520960						

APPROVED BY STATE	APPROVED BY RAILROAD	CAR NUMBER	SEAL NUMBER
-------------------	----------------------	------------	-------------

Location: COLUMBUS				OH	S&E Proj. No.: 10.3250	AFE No.: F-05965	Drawing No.: 81131440				
Store No.:				P.O.Number:		Date Required:	Date Shipped:	Vendor: Railroad Signal Design			
Qty.	Class-Item-CD	UI	Price per Item	Total Price	Item Description	Quantity Shipped	Quantity Installed Date Quan.	Quantity Returned (Credit)	Special Instructions		
4	670-664917-4	EA	\$71.49	\$285.96	CONNECTOR KIT, WELDED FAR RAIL, CONSISTING OF RUBBER HOSE PROPERLY DRILLED, BONDSTRAND, 1 SPLICING SLEEVE, 1 REDUCING SLEEVE, 3 CLAMPS, 1 TRACK CLIP, 1 WEB WELDED TRACK CONNECTOR, 1 WELD METAL, SAFETRAN 111359-2X						
4	670-632520-4	EA	\$57.38	\$229.52	CONNECTOR KIT, WELDED NEAR RAIL, CONSISTING OF, RUBBER HOSE PROPERLY DRILLED, BONDSTRAND, SPLICING SLEEVE, 1 REDUCING SLEEVE, 5 CLAMPS, 1 TRACK CLIP, 1 WEB WELDED TRACK CONNECTOR, 1 WELD METAL, SAFETRAN 111359-1X						
2	670-315874-4	EA	\$1,375.33	\$2,750.66	COUNTERWEIGHT, KIT 25'- 32' STAINLESS FOR S-MECH ON GATE/CANT COMBOS W/ARMS AND HUBS SAFETRAN 070755-2532AX						
1	670-009086-4	EA	\$505.88	\$505.88	COUPLER, PSO TUNED RECEIVER SAFETRAN NO. 7A355A-790HZ						
11	670-760012-4	EA	\$41.80	\$459.80	COVER, FOR 1 WAY FLASHING LIGHT ASSY. 18 OZ. BLACK VINYL COATED NYLON. =====TO COVER 2 LAMPS=====						
1	670-986650-4	EA	\$355.00	\$355.00	DISPOSAL, CONSTRUCTION DEBRIS AND CLEANING X'ING EQUIPMENT CONTAINER						
4	670-228165-4	EA	\$13.71	\$54.84	EQUALIZER, SAFETRAN 022700-1X LESS BASE, MODERN NO. 700-1 SHUNT ARRESTER TRACK CIRCUITS CR 02-197950						
1	670-000004-4	EA	\$700.00	\$700.00	FCC LICENSE FOR MONITOR/RADIO						
12	670-000003-4	EA	\$255.85	\$3,070.20	FILL/STONE #57, QUANTITY IS BASED ON TRUCK LOAD PLUS DELIVERY COST						
2	670-744631-4	EA	\$3,270.80	\$6,541.60	FOUNDATION, CFLS FOR SAFETRAN MODEL "WT/F" ARMS 12' TO 30' SINGLE MAST, DIXIE# DP4B-SM12-26-4, 5'10" CR 02-205902						
2	670-015231-4	EA	\$613.80	\$1,227.60	FOUNDATION, DIXIE,S-2 GATE 2'6"X2'6"X5'6" ASSEMBLED						
1	670-005375-4	EA	\$548.23	\$548.23	GATE ARM, ALUMI-LITE (HIGH WIND), 34-40 FT. ARM ASSEMBLY, INCLUDES GATE GUARD FOR GATE LIGHT CABLE. HIGH INTENSITY VERTICAL STRIPES.						
1	670-005378-4	EA	\$408.65	\$408.65	GATE ARM, ALUMINUM, 25-31 FT. ARM ASSEMBLY, INCLUDES GATE GUARD FOR GATE LIGHT CABLE. HIGH INTENSITY VERTICAL STRIPES.						

APPROVED BY STATE	APPROVED BY RAILROAD	CAR NUMBER	SEAL NUMBER
-------------------	----------------------	------------	-------------

Qty.	Class-Item-CD	UI	Price per Item	Total Price	Item Description	Quantity Shipped	Quantity Installed Date Quan.	Quantity Returned (Credit)	Special Instructions
1	670-338352-4	EA	\$49,835.67	\$49,835.67	GCP4000 FOR 6X6 XING 2 TRK (2TRK CHASSIS), REDUNDANT, WIRED RACK FOR 6X6 FARADAY, 2 EA SSCCIII, 2 EA 20 AMP CRAIG CHARGER, NO SEAR, 2 RELAY RACKS, SAFETRAN T19013				
2	670-281710-4	EA	\$15.90	\$31.80	GUARD FOR GATE LIGHT CABLE P/N NEG 510-CG				
1	670-018333-4	KT	\$1,107.52	\$1,107.52	KIT, FOREMAN CROSSING SIGNAL (INCLUDES 10-757356, 10- 841068, 2-899801, 2-904890, 50-917900, 32-840003, 1-003360, 1- 809007, 2-754202, 55-938285, 2-204244, 2-656656 , 50-917869, 1- 005458, 2-810339, 1-447991, 2-805560, 1-330382, 1-986008, 100 WHITE TAGS AND				
2	670-092155-4	EA	\$176.00	\$352.00	LAMP ASSY, LED GATE ARM KIT (INCLUDES 3 LAMPS COMPLETE WITH CABLES AND MTG. HARDWARE) REC #: 9298- 1120				
2	670-005054-4	EA	\$986.35	\$1,972.70	LAMP ASSY, LED, 12" MAST 1 WAY FRONT LIGHTS (IPN: 042003- L489XNS)				
7	670-005057-4	EA	\$1,008.69	\$7,060.83	LAMP ASSY, LED, 4" CANT JURY ARM MAST (FRONT OR BACK) (IPN: 042003-L001534)				
2	670-005066-4	EA	\$1,019.80	\$2,039.60	LAMP ASSY, LED, 5" MAST 1 WAY BACK LIGHTS (IPN: 042003- L001493)				
10	670-440826-4	EA	\$1.18	\$11.80	LINK, SAFETRAN 024620-1X INSL TESTING COMP 1 IN CENTER SIGNAL CIRCUITS CR 02-286662				
1	670-339854-4	EA	\$573.38	\$573.38	MAST, (WT/F), SIDELIGHT BRACKET FOR WT/F CANTILEVER, SAFETRAN 041442-1031X,				
2	670-201210-4	EA	\$8,710.07	\$17,420.14	MAST, 12" CANTILEVER, FOR 21'-30' WT/F ARMS, INCL. LADDER KIT (IPN: 071271-30NS)				
2	670-135958-4	EA	\$1,751.31	\$3,502.62	MAST, 5" ALUMINUM 22' WITH DOUBLE JCT. BOX BASE. SAFETRAN 070519-X598				
2	670-521147-4	EA	\$3,850.87	\$7,701.74	MECHANISM, GATE MODEL S-40, WITH CONTACT HEATER, COMPLETE W/RELAY S'TRAN # 074000-W00090				
10	670-000001-4	EA	\$726.23	\$7,262.30	MISC. EXPENSE, MATERAIL/FILL				
1	000-000000-4	EA	\$7,000.00	\$7,000.00	MISC. EXPENSE, UNDERGROUND BORING				
1	000-000011-4	EA	\$1,200.00	\$1,200.00	OHIO PE AND ATTORNEY CHARGES				

Location: COLUMBUS			OH	S&E Proj. No.: 10.3250	AFE No.: F-05965	Drawing No.: 81131440	Vendor: Railroad Signal Design		
Store No.:			P.O.Number:		Date Required:	Date Shipped:			
Qty.	Class-Item-CD	UI	Price per Item	Total Price	Item Description	Quantity Shipped	Quantity Installed Date Quan.	Quantity Returned (Credit)	Special Instructions
2	670-001355-4	EA	\$81.25	\$162.50	PACKAGE, HARDWARE SIGN 12 IN. (USE WITHWT/F MAST) MOUNTING, SERRMI A1250-8, HARMON @180004/0007,				
2	670-207365-4	EA	\$105.58	\$211.16	PACKAGE, HARDWARE SUPPORT FOR MOUNTING CROSSING SIGN ON WT/F CANTILEVER ARM 21'-40", SAFETRAN P/N 071279-X11				
1	670-018542-4	EA	\$47.30	\$47.30	PADLOCK, ABLOY 5/16" X 1" SHACKLE CLEARANCE KEYED FOR C&S DEPT USE; INCLUDES ETCHING;				
1	255-646807-4	EA	\$32.92	\$32.92	PADLOCK, SAFETRAN PART NO. 030399-29X SCREW TYPE FOR CIR CONTROLLER AND BTY. BOX				
1	670-514605-4	EA	\$13.56	\$13.56	PINNACLE, W-C SECT 1-11, 4"X 5" REF K1 110-8 OR SAFETRAN NO. @035045-503X				
4	670-259211-4	EA	\$62.85	\$251.40	PLUG BOARD KIT, TYPE B-1 & VOLTAGE TEST TERMINAL, SAFETRAN 420000-75X				
2	670-782807-4	EA	\$2,379.77	\$4,759.54	PSO+, RECEIVER ASSY, PSO+ RX CODE "A", FREQUENCY SELECTABLE, SAFETRAN 74483-0001				
2	670-782071-4	EA	\$1,852.62	\$3,705.24	PSO+, TRANSMITTER ASSY, PSO+ TX CODE "A", FREQUENCY SELECTABLE, SAFETRAN 74481-0001				
4	465-002899-4	EA	\$46.37	\$185.48	REEL, CABLE DISPOSABLE FOR CROSSING SIGNAL PACKAGES				
1	670-019620-4	EA	\$27,903.68	\$27,903.68	SHELTER, WIRED UNI 6X6 ALUMN PTMW 91000778, 10,000 BUT AC AND 1000W HEATER, WITH HEAVY DUTY HASP AND 36 IN TERMINAL BOARD				
4	670-586967-4	EA	\$29.68	\$118.72	SHUNT COVER W/LAG SCREWS, 19"X19", SERRMI #40271, ORDER 1 PER SHUNT				
4	670-016314-4	EA	\$796.99	\$3,187.96	SHUNT, MULTI-FREQ. #250849-003 FSS-1D ALSTOM NARROW BAND (86, 114, 156, 172, 211)				
2	670-016346-4	EA	\$154.53	\$309.06	SIGN, X-BUCK, HI-INTENSIVE REFLECTIVE FRT. & BACK FOR ALL STATES, SAFETRAN# 035200-91X				
5	670-397239-4	EA	\$33.66	\$168.30	SIGN, CROSSING ENS MALFUNCTION ASSEMBLY FOR 12" MAST, SAFETRAN #T17216				
44	670-018188-4	EA	\$42.35	\$1,863.40	TERMINAL BLOCK, THRU POST WITH HARDWARE LESS LIGHTNING ARRESTER, SIEMENS P/N NYK: 023275-17X.				
1	670-006511-4	EA	\$492.10	\$492.10	Z-DNO-COUPLER, PSO II TUNED RECEIVER SAFETRAN NO. 7A355A-1450HZ				

APPROVED BY STATE	APPROVED BY RAILROAD	CAR NUMBER	SEAL NUMBER
-------------------	----------------------	------------	-------------


Location: COLUMBUS			OH	S&E Proj. No.: 10.3250	AFE No.: F-05965	Drawing No.: 81131440	Vendor: Railroad Signal Design		
Store No.:				P.O.Number:	Date Required:	Date Shipped:			
Qty.	Class-Item-CD	UI	Price per Item	Total Price	Item Description	Quantity Shipped	Quantity Installed Date Quan.	Quantity Returned (Credit)	Special Instructions
1	670-767220-4	EA	\$317.16	\$317.16	Z-DNO-MAST, (WT/F) JURY ADJUSTABLE LANE LIGHT BRACKET FOR WT/F CANTILEVER, SAFTRAN P/N 071227-X10				
1	670-742096-4	EA	\$45.91	\$45.91	Z-DNO-RELAY INTERFACE PROBE, ULTRATECH PN 16031-00				
2	670-353390-4	EA	\$41.45	\$82.90	Z-DNO-SIGN, "2 TRACKS" LESS HARDWARE SAFETTRAN 035207-2X				

Total Material: \$208,062.75

APPROVED BY STATE	APPROVED BY RAILROAD	CAR NUMBER	SEAL NUMBER
-------------------	----------------------	------------	-------------

SH. NO.		CONTENTS		REV. NO.
NXI		INDEX SHEET		1
1		LAYOUT		1
2		PROFILE		1
3		CABLE PLAN		1
4		LOAD CENTER		1
5		CHARGERS & BATTERIES		1
6		GCP4000 CHASSIS & MODULE LAYOUT		1
7		GCP4000 PROGRAMMING		1
8		GCP4000 PROGRAMMING		1
9		CONNECTORS FOR TRACK MODULES		1
10		CPU MODULE & SEAR III HOOK-UPS		1
11		SEAR III PROGRAMMING		1
12		BACKHAUL EQUIPMENT		1
13		SSCC#1 MODULE HOOK-UP		1
14		SSCC#2 MODULE HOOK-UP		1
15		PSO+ RECEIVER AND TRANSMITTER (TRACK 1)		1
16		PSO+ RECEIVER AND TRANSMITTER (TRACK 2)		1
17		CANTILEVER FLASHER LIGHTS		1
18		SIGNAL "A" S-40 GATE & FLASHER CIRCUITS		1
19		SIGNAL "B" S-40 GATE & FLASHER CIRCUITS		1
20		BACKBOARD 1A & 1B		1
21		REAR BACKBOARD 1A & 1B		1
22		SIDE A LAYOUT & RACK PLACEMENT		1
23		SIDE C LAYOUT		1
24		SIDE B LAYOUT & TOP VIEW		1

REVISIONS			
1	10-15-19	TAH	RSD
PLAN REVISED ACCOUNT OF CROSSING UPGRADE AT PHILLIPI RD. PROJ. #10.3250 FILE: CX0122938 IN SERVICE: PER:			

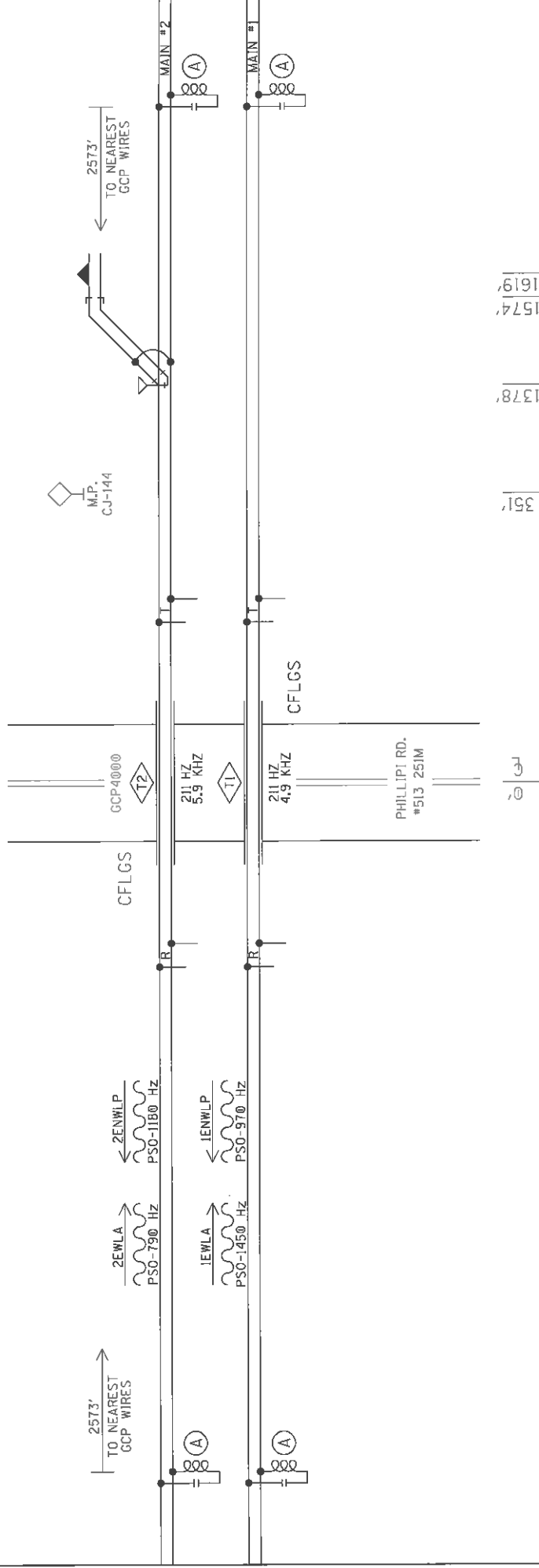
DESIGNED BY:	TAH 10-15-19	 NORFOLK SOUTHERN
DRAWN BY:	RSD 10-15-19	OFFICE OF ASST. VICE PRESIDENT COMM. & SIGNAL, ATLANTA, GA.
CHECKED BY:	BES 10-15-19	COLUMBUS, OH
IN SERVICE:	DAYTON	CFLGS AT PHILLIPI RD.
		REV. 1
		SHEET INDEX 1
		CADD OF DWG. NO. 81131440.NXI

PROPERTY  
PENNSYLVANIA R.R.



TO CINCINNATI  
(R.R. WEST)  
M.P. INCREASING

TO COLUMBUS  
(R.R. EAST)  
M.P. DECREASING



Ⓐ - MF-NBS FSS-ID 250849-003 (211HZ)

PROFILE

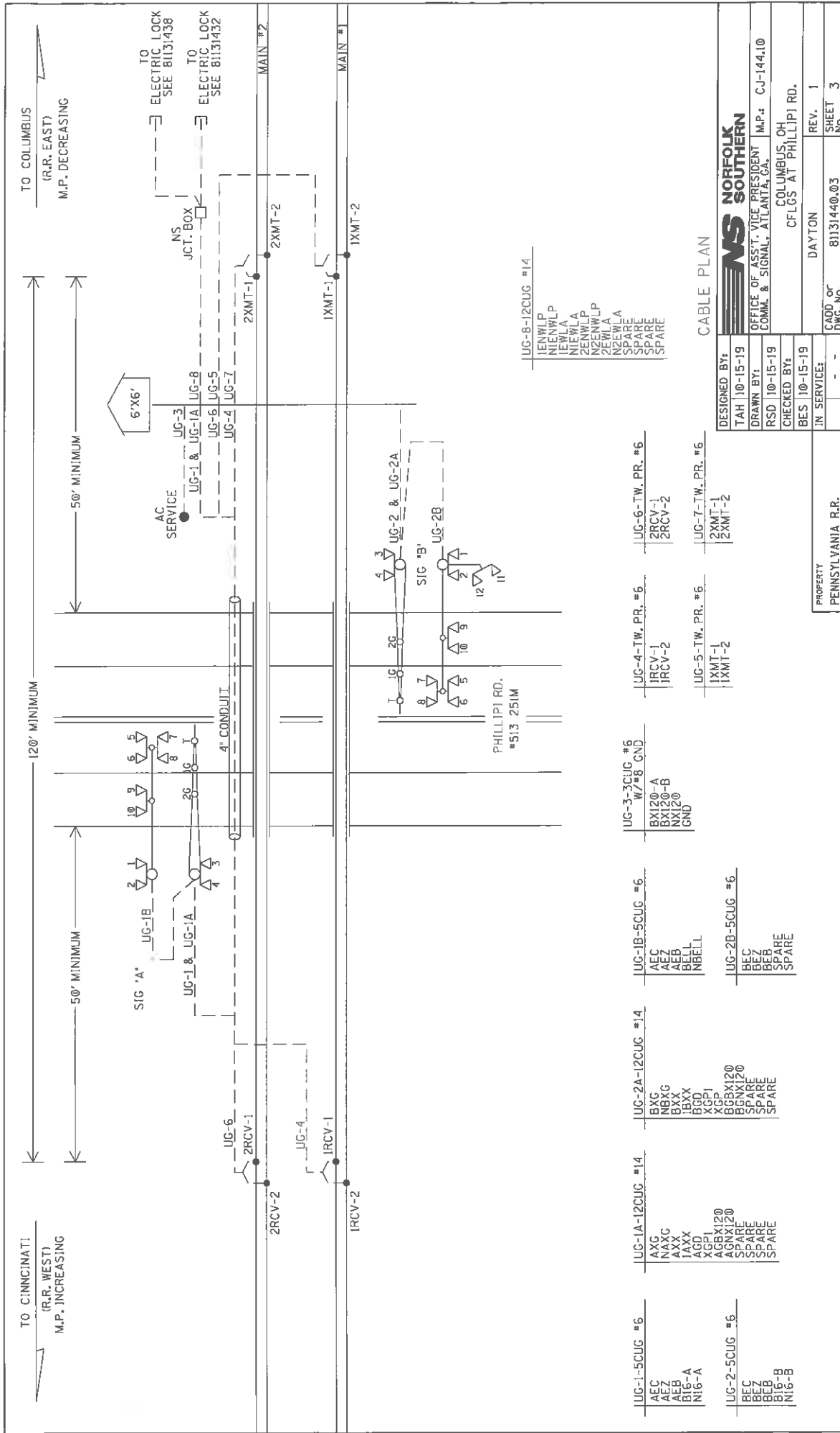
DESIGNED BY:	TAH 10-15-19
DRAWN BY:	RSD 10-15-19
CHECKED BY:	BES 10-15-19
IN SERVICE:	- -
PROPERTY	PENNSYLVANIA R.R.
CADD or DWG. No.	81131440.02
REV.	1
SHEET	2
NO.	

**NORFOLK SOUTHERN**

OFFICE OF ASST. VICE PRESIDENT  
COMM. & SIGNAL, ATLANTA, GA. M.P. CJ-144.10

COLUMBUS, OH  
CFLGS AT PHILLIPI RD.

DAYTON







# WARNING

REMOVAL OF THE SSC3III MODULE WILL CAUSE THE GATES TO DROP WITHOUT GATE DELAY AND FLASHING LIGHTS WILL NOT ACTIVATE.

# CAUTION

ENSURE CORRECT POLARITY OF B AND N FOR SSC3III MODULE OR SEVERE DAMAGE WILL OCCUR.  
REFER TO DETAILED INSTRUCTIONS ON THE SSC3III BEFORE APPLYING POWER TO THE POWER CONNECTORS.

# ATTENTION!

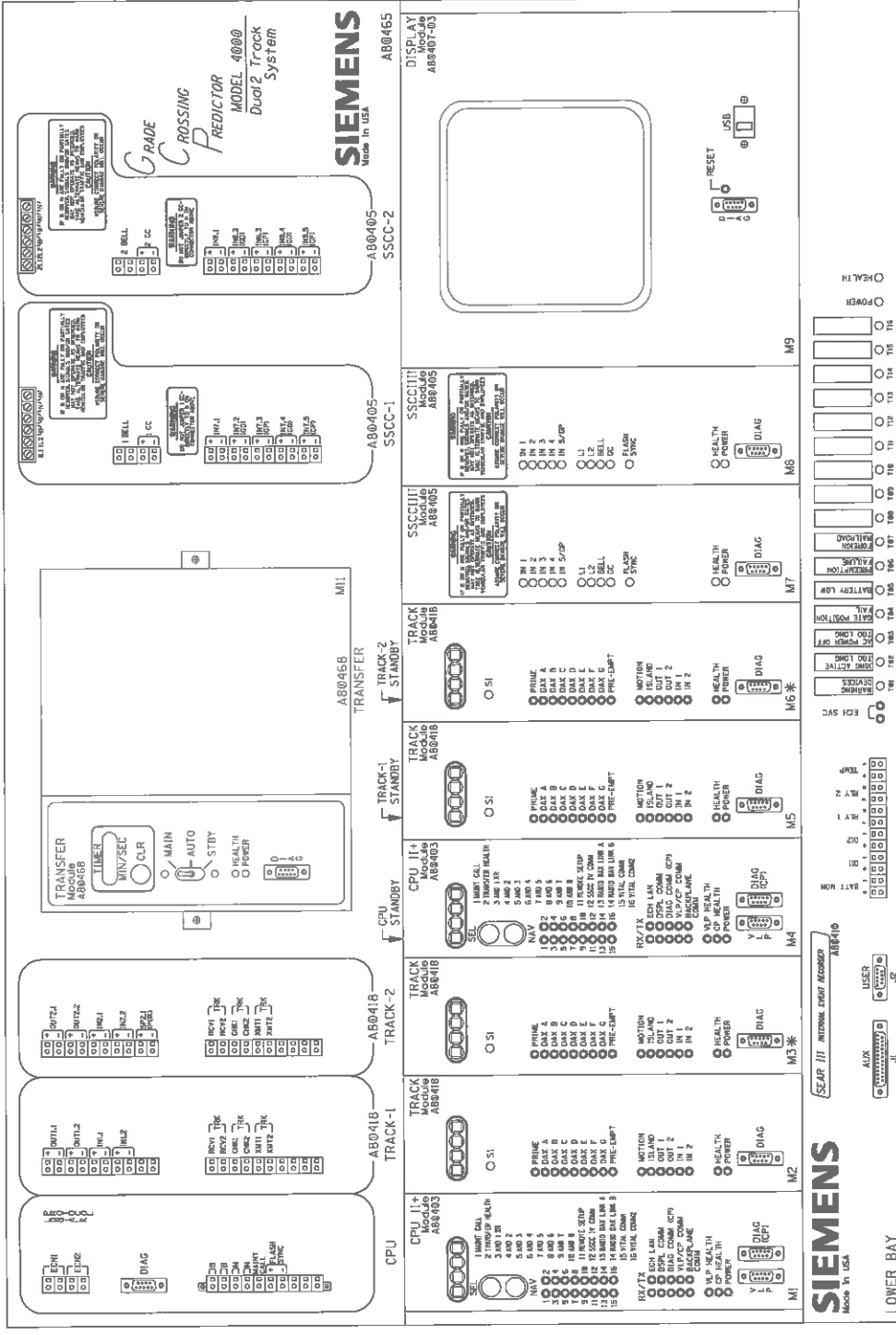
ENSURE THE DISPLAY MODULE HEATER IS DISABLED. LEAVING THE DISPLAY HEATER ENABLED WILL REDUCE THE AMOUNT OF BATTERY STANDBY TIME IN THE EVENT OF AN AC POWER FAILURE.  
HEATER FUNCTION IS JUMPER SELECTABLE ON THE DISPLAY MODULE BOARD.  
THREE OPTIONS ARE AVAILABLE:  
NORMAL LCD HTR (DEFAULT)  
HI CURRENT  
OFF (NO JUMPER)

\* = MAIN AND STANDBY MAY USE RIO IN TRACK 2 SLOTS (M3 AND M6)

# GCP4000 CHASSIS & MODULE LAYOUT

DESIGNED BY:	TAH 10-15-19
DRAWN BY:	OFFICE OF ASS'T. VICE PRESIDENT COMM. & SIGNAL, ATLANTA, GA.
CHECKED BY:	RSD 10-15-19
IN SERVICE:	BES 10-15-19
REV. 1	DAYTON
CADD or DWG. NO.	81131440.06
SHEET 6	NO.

PROPERTY	PENNSYLVANIA R.R.
REVISION	
DATE	
BY	
DESCRIPTION	



DESIGNED BY:	TAH 10-15-19
DRAWN BY:	OFFICE OF ASS'T. VICE PRESIDENT COMM. & SIGNAL, ATLANTA, GA.
CHECKED BY:	RSD 10-15-19
IN SERVICE:	BES 10-15-19
REV. 1	DAYTON
CADD or DWG. NO.	81131440.06
SHEET 6	NO.

PROPERTY	PENNSYLVANIA R.R.
REVISION	
DATE	
BY	
DESCRIPTION	



ADVANCED: out of service  
005 Control= Display+005 IPs  
005 Timeout = Yes  
005 Timeout = 1 hrs

ADVANCED: out of service 2  
T1 005 Control= 005 input 1  
T2 005 Control= 005 input 1

ADVANCED: track wrap circuits  
Wrap 1 OS Timer = 5 sec  
Track 1 Wrap Used = No  
Track 2 Wrap Used = No

ADVANCED: trk 1 overrides  
Track 1: All Predictors Override Used **No**

ADVANCED: trk 2 overrides  
Track 2: All Predictors Override Used **No**

ADVANCED: OR logic

OR 1 Used = No  
OR 2 Used = No  
OR 3 Used = No  
OR 4 Used = No

ADVANCED: internal I/O

Int-1 Set by = Not Used  
Int-2 Set by = Not Used  
Int-3 Set by = Not Used  
Int-4 Set by = Not Used  
Int-5 Set by = Not Used  
Int-6 Set by = Not Used  
Int-7 Set by = Not Used  
Int-8 Set by = Not Used  
Int-9 Set by = Not Used  
Int-10 Set by = Not Used  
Int-11 Set by = Not Used  
Int-12 Set by = Not Used  
Int-13 Set by = Not Used  
Int-14 Set by = Not Used  
Int-15 Set by = Not Used  
Int-16 Set by = Not Used

ADVANCED: internal I/O 3

Int-9 Set by = Not Used  
Int-10 Set by = Not Used  
Int-11 Set by = Not Used  
Int-12 Set by = Not Used  
Int-13 Set by = Not Used  
Int-14 Set by = Not Used  
Int-15 Set by = Not Used  
Int-16 Set by = Not Used

ADVANCED: internal I/O 4

Int-13 Set by = Not Used  
Int-14 Set by = Not Used  
Int-15 Set by = Not Used  
Int-16 Set by = Not Used

ADVANCED: site options  
Daylight Savings = Off  
Maint Call Rpt IP Used = No  
Emergency Activate IP = No  
EZ/EX Logging = Change  
EZ/EX Point Change = 3

SSCC

SSCC-1: Activation = AND 1 XR  
SSCC-2: Gate Delay = 6 sec  
SSCC-3: Number of GPs = 2  
SSCC-4: Flash Rate = 40  
SSCC-5: Low Battery Detection = No  
SSCC-6: Flash Sync = master  
SSCC-7: Invert Gate Output = No  
SSCC-8: Lamp Neutral Test = Off  
Aux-1 Xng Ctrl Used = No

SSCC: 2

SSCC-2: Activation = AND 1 XR  
SSCC-3: Gate Delay = 6 sec  
SSCC-4: Number of GPs = 0  
SSCC-5: Flash Rate = 40  
SSCC-6: Low Battery Detection = No  
SSCC-7: Flash Sync = slave  
SSCC-8: Invert Gate Output = No  
SSCC-9: Lamp Neutral Test = Off  
Aux-2 Xng Ctrl Used = No

OUTPUT: assignment page

OUT 1.1 = Not Used  
OUT 1.2 = Not Used  
OUT 2.1 = Not Used  
OUT 2.2 = Not Used

INPUT: assignment page

IN 1.1 = Not Used  
IN 1.2 = Not Used  
IN 2.1 = Not Used  
IN 2.2 = Not Used

IO: assignment SSCC

OUT 1.1 = Gate Output 1  
OUT 1.2 = Gate Output 2  
IN 1.1 = Not Used  
IN 1.2 = Not Used  
IN 1.3 = Not Used  
IN 1.4 = Not Used  
IN 1.5 = Not Used  
IN 1.6 = Not Used  
IN 1.7 = Not Used  
IN 1.8 = Not Used  
IN 1.9 = Not Used  
IN 1.10 = Not Used  
IN 1.11 = Not Used  
IN 1.12 = Not Used  
IN 1.13 = Not Used  
IN 1.14 = Not Used  
IN 1.15 = Not Used  
IN 1.16 = Not Used

SEAR Subnode =  
DI 1 = Not Used  
DI 2 = Not Used  
RI 1 = General  
RI 2 = Not Used

SEAR: inputs

SP 2.1 = Not Used  
SP 3.1 = Not Used  
SP 4.1 = Not Used  
SP 5.1 = Not Used  
SP 6.1 = Not Used

SEAR: slot 1-4 inputs

IN 1.1 = Not Used  
IN 1.2 = Not Used  
IN 2.1 = Not Used  
IN 2.2 = Not Used  
IN 3.1 = Not Used  
IN 3.2 = Not Used  
IN 4.1 = Not Used  
IN 4.2 = Not Used

SEAR: inputs slot 5

IN 5.1 = Not Used  
IN 5.2 = Not Used

SEAR: inputs slot 6

IN 6.1 = Not Used  
IN 6.2 = Not Used

SEAR: slot 7-8 inputs

IN 7.1 = Not Used  
IN 7.2 = Not Used  
IN 8.1 = Not Used  
IN 8.2 = Not Used  
IN 8.3 = Not Used  
IN 8.4 = Not Used  
IN 8.5 = Not Used

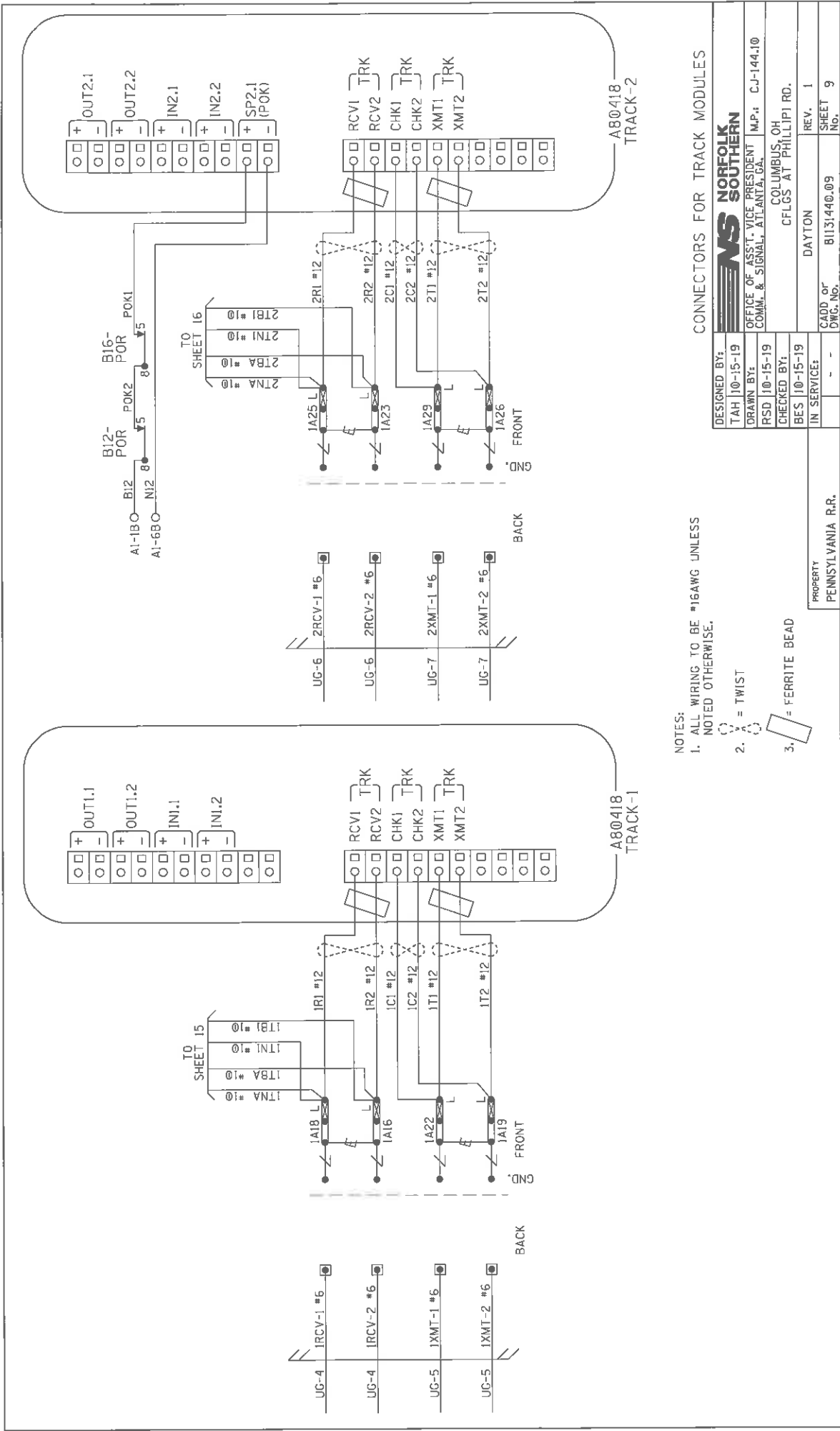
SITE: programming

Radio Subnode = 1  
Field Password = Off  
Low Battery Enabled = Off  
Configuration Package File  
-----  
Filename: 81131440.pac

# CCP4000 PROGRAMMING

DESIGNED BY:	TAH 10-15-19	 <b>NORFOLK SOUTHERN</b>
DRAWN BY:	OFFICE OF ASST. VICE PRESIDENT COMM. & SIGNAL, ATLANTA, GA.	
CHECKED BY:	COLUMBUS, OH	
REV. 1	DAYTON	
DESIGNED BY:	TAH 10-15-19	REV. 1
DRAWN BY:	OFFICE OF ASST. VICE PRESIDENT COMM. & SIGNAL, ATLANTA, GA.	SHEET #
CHECKED BY:	COLUMBUS, OH	
REV. 1	DAYTON	
DESIGNED BY:	TAH 10-15-19	
DRAWN BY:	OFFICE OF ASST. VICE PRESIDENT COMM. & SIGNAL, ATLANTA, GA.	
CHECKED BY:	COLUMBUS, OH	
REV. 1	DAYTON	

PROPERTY  
PENNSYLVANIA R.R.



NOTES:  
 1. ALL WIRING TO BE #16AWG UNLESS NOTED OTHERWISE.

2. = TWIST

3. = FERRITE BEAD

# CONNECTORS FOR TRACK MODULES

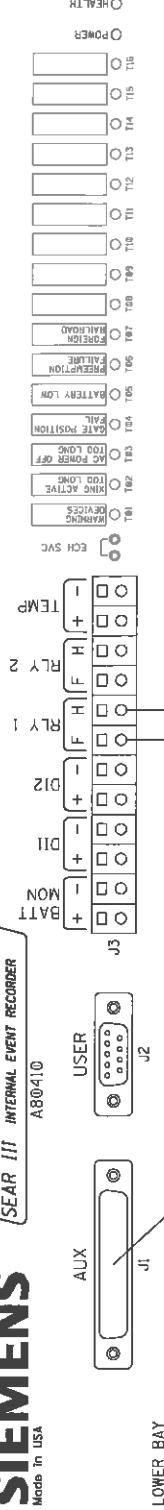
DESIGNED BY:	TAH 10-15-19	<b>NORFOLK SOUTHERN</b>	OFFICE OF ASST. VICE PRESIDENT COMM. & SIGNAL, ATLANTA, GA.	M.P.: C-J-144.10
DRAWN BY:	RSD 10-15-19		COLUMBUS, OH	CFLGS AT PHILLIPS RD.
CHECKED BY:	BES 10-15-19		DAYTON	REV. 1
IN SERVICE:				SHEET 9

PROPERTY  
 PENNSYLVANIA R.R.

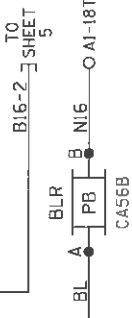
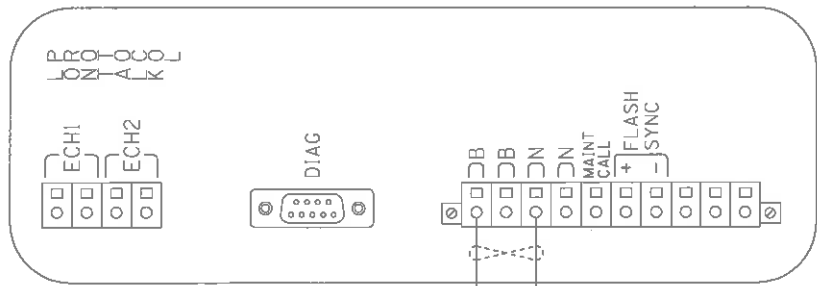
CADD or  
 DWG. No. B1131440.09

**SIEMENS**  
Made in USA

SEAR III INTERNAL EVENT RECORDER  
A80410



TO  
RADIO  
SHEET 12



BLR

6	5	4
3	2	1
BACK 3	2	1
FRONT 5	5	4
HEEL 9	8	7
B 000001 A		
POTTER BRUMFIELD		
RELAY		
(FRONT VIEW)		
KUMP-14016-12		
10	9	8
7	6	5

CPU MODULE & SEAR III HOOK-UP

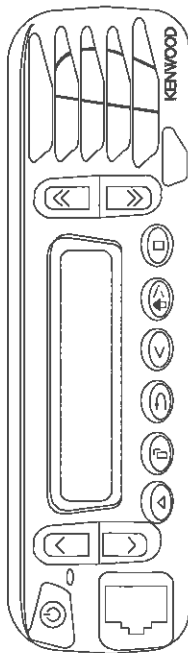
NOTES:  
1. ALL WIRING TO BE #16AWG UNLESS NOTED OTHERWISE.  
2. V = TWIST

DESIGNED BY:	TAH 10-15-19	<b>NORFOLK SOUTHERN</b>
DRAWN BY:	OFFICE OF ASST. VICE PRESIDENT COMM. & SIGNAL, ATLANTA, GA.	
RSD 10-15-19	M.P. CJ-144.10	
CHECKED BY:	COLUMBUS, OH	
BES 10-15-19	CFLGS AT PHILLIP RD.	
IN SERVICE:	DAYTON	
REV. 1		
CADD or DWG. No.	81131440.10	
SHEET No.	10	

PROPERTY  
PENNSYLVANIA R.R.

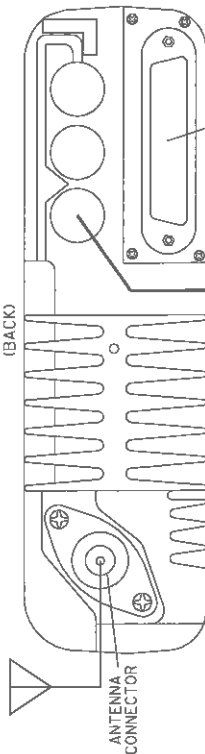


(FRONT)



KENWOOD RADIO NX-700H  
OR EQUIVALENT

(BACK)



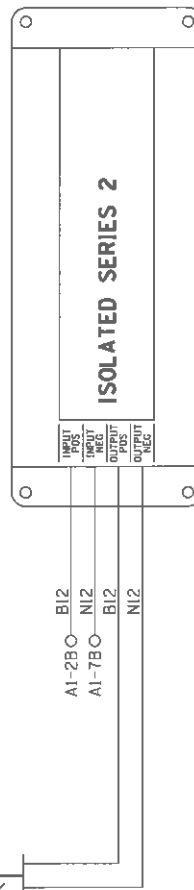
ANTENNA  
CONNECTOR

BA5

DB25M - DB25M  
STRAIGHT THROUGH CABLE

TO  
SHEET 111  
SHEET 10

CABLE - KENWOOD  
P/N E30-7520-15



ISOLATED SERIES 2

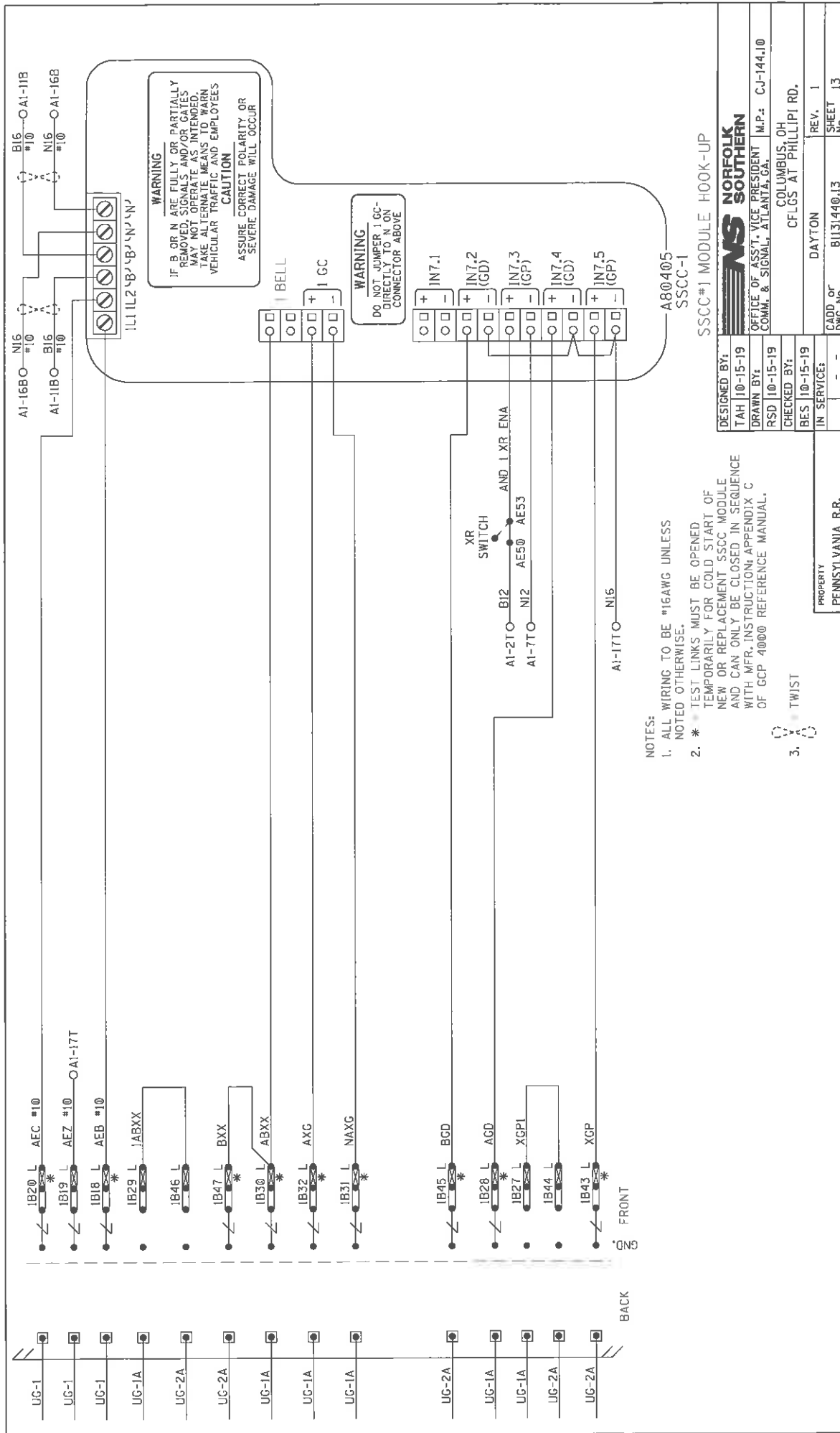
BB5

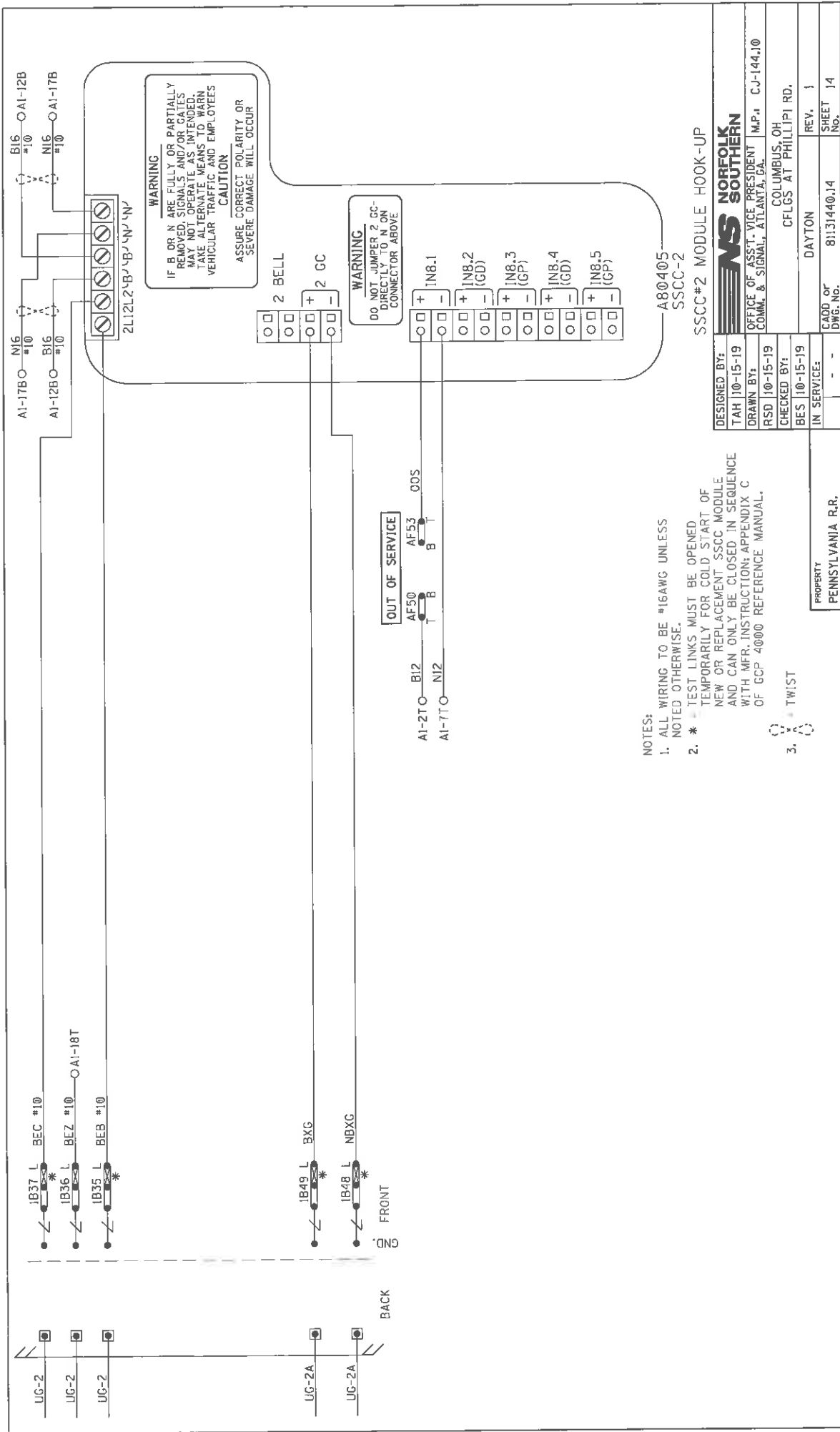
NOTE:  
1. ALL WIRING TO BE #10AWG UNLESS  
NOTED OTHERWISE.

BACKHAUL EQUIPMENT

DESIGNED BY:	TAH 10-15-19	<b>NS</b> NORFOLK SOUTHERN
DRAWN BY:	RSD 10-15-19	OFFICE OF ASST. VICE PRESIDENT COMM. & SIGNAL, ATLANTA, GA.
CHECKED BY:	BES 10-15-19	COLUMBUS, OH
IN SERVICE:	- -	CFLGS AT PHILLIP RD.
DAYTON	REV. 1	
CADD OF DWC. No.	81131440.12	SHEET 12

PROPERTY  
PENNSYLVANIA R.R.



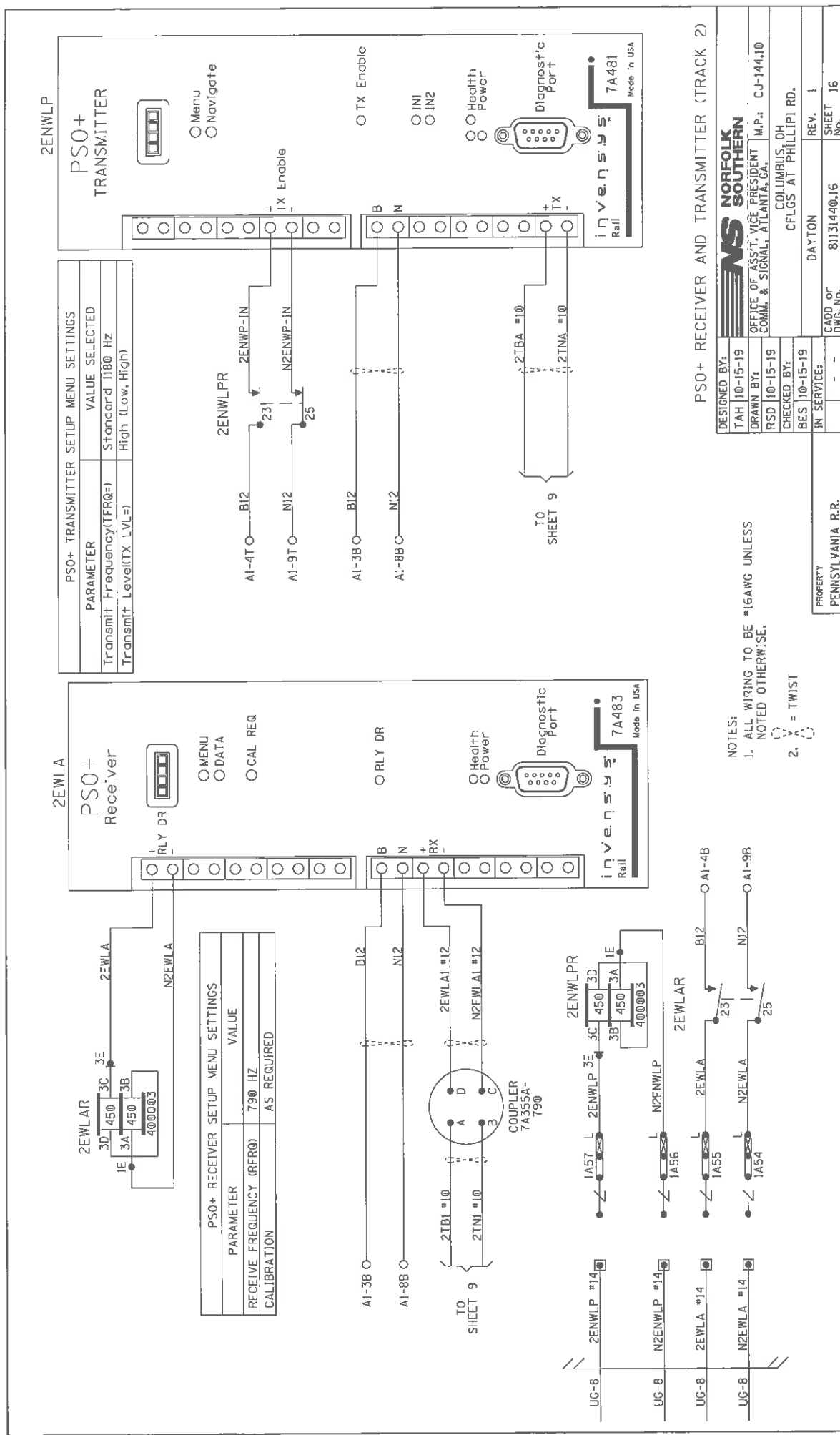


SSCC#2 MODULE HOOK-UP



OFFICE OF ASST. VICE PRESIDENT COMM. & SIGNAL, ATLANTA, GA.	M.P.1 C.J-144.10
COLUMBUS, OH	
CFGS AT PHILLIPI RD.	
DAYTON	REV. 1
CADD OF DWG. NO. 81131440.14	SHEET 14
	No.

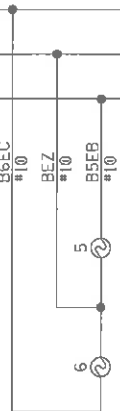




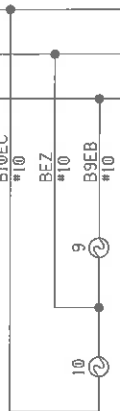
# 'B' TIP FLASHING LIGHTS (BACK)



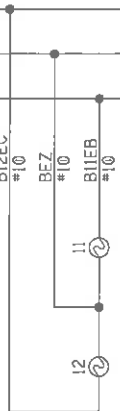
# 'B' TIP FLASHING LIGHTS (FRONT)



# 'B' LANE FLASHING LIGHTS (FRONT)



# 'B' CANTILEVER FLASHING LIGHTS (SIDE)

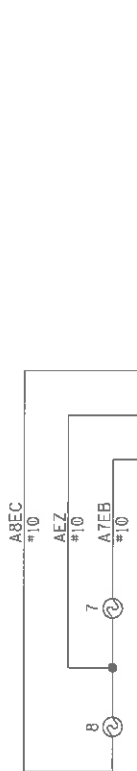


# 'B' CANTILEVER MAST FLASHING LIGHTS



TO SHEET 19

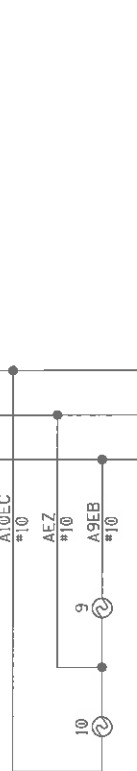
# 'A' TIP FLASHING LIGHTS (BACK)



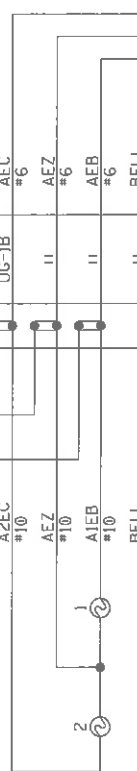
# 'A' TIP FLASHING LIGHTS (FRONT)



# 'A' LANE FLASHING LIGHTS (FRONT)



# 'A' CANTILEVER MAST FLASHING LIGHTS



BELL

TO SHEET 18

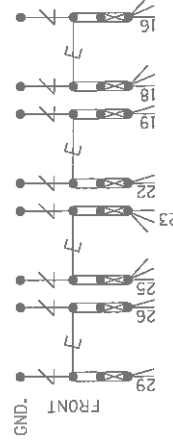
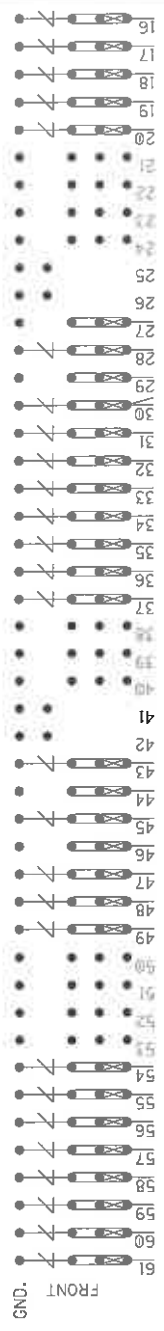
## CANTILEVER FLASHER LIGHTS

DESIGNED BY:	TAH 10-15-19	<b>NORFOLK SOUTHERN</b> OFFICE OF ASSIST. VICE PRESIDENT COMM. & SIGNALS, ATLANTA, GA. COLUMBUS, OH CLEVELAND, OH DAYTON REV. 1 SHEET 17
DRAWN BY:	RSD 10-15-19	
CHECKED BY:	BES 10-15-19	
IN SERVICE:		

PENNSYLVANIA R.R.







- NOTES:
1. = HEAVY DUTY EQUALIZER (022700-1X)
  2. = ERICO LIGHTNING ARRESTER (EPD2050F)
  3. = THROUGH GROUND POST ON EACH TERMINAL BLOCK TO FARADAY SHIELD
  4. = TEST LINK
  5. INSTALL TEST LINKS ON ALL TRACK WIRES AND ON ALL LOW VOLTAGE UNDERGROUND CABLE TERMINATIONS.



SEE FARADAY SHIELD SHOP DRAWING DETAIL FOR HOW THIS PORTION OF THE FARADAY SHIELD IS PREDRILLED. ONLY INSTALL AND USE THE TERMINALS NEEDED.

BACKBOARD 1A & 1B

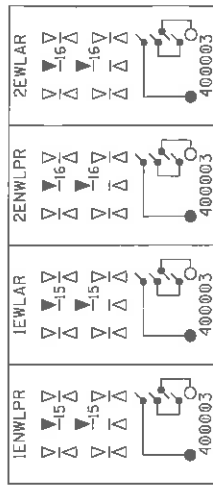
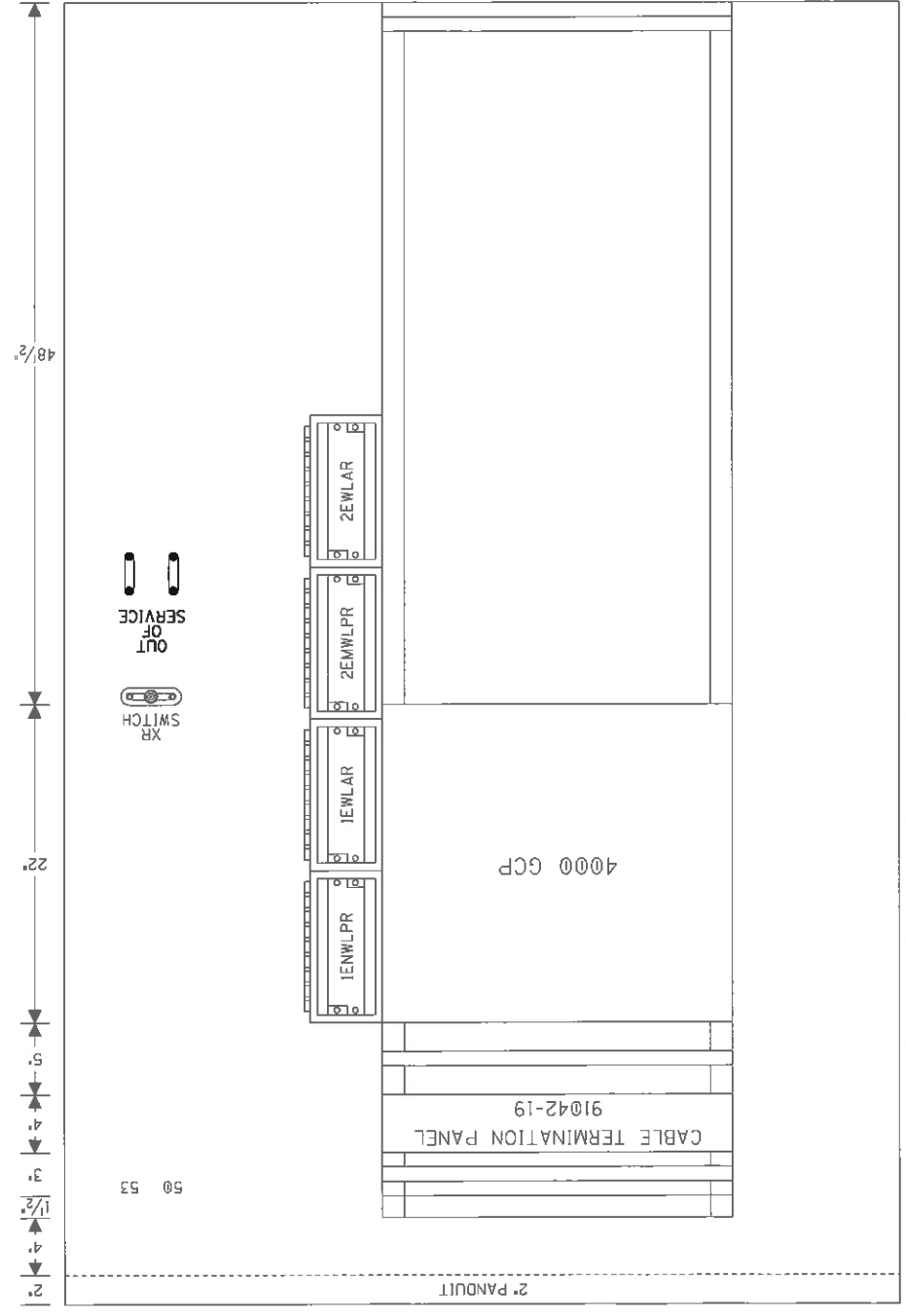
DESIGNED BY:	TAH 10-15-10
DRAWN BY:	MS NORFOLK SOUTHERN
REVISED BY:	OFFICE OF ASST. VICE PRESIDENT COMM. & SIGNAL, ATLANTA, GA. M.P. C-1-144,100
CHECKED BY:	COLUMBUS, OH
REVISED BY:	CFLOS AT PHILLIPS RD.
IN SERVICE:	DAYTON
DATE OF DWG. HS.	REV. 1
PROPERTY	SHEET 200
PENNSYLVANIA, R.P.	REV. 200

"1B"



2.  TEST LINKS MUST BE OPENED
3.  INSULATED NUTS TO BE USED ON ALL 120VAC AND ABOVE TERMINALS

**NS** NORFOLK SOUTHERNPROPERTY  
PENNSYLVANIA F.R.



SAFETRAIN ALSTOM (GRS) RELAY  
CROSS REFERENCE LIST  
SAFETRAIN ALSTOM (GRS)  
400003 A62-308

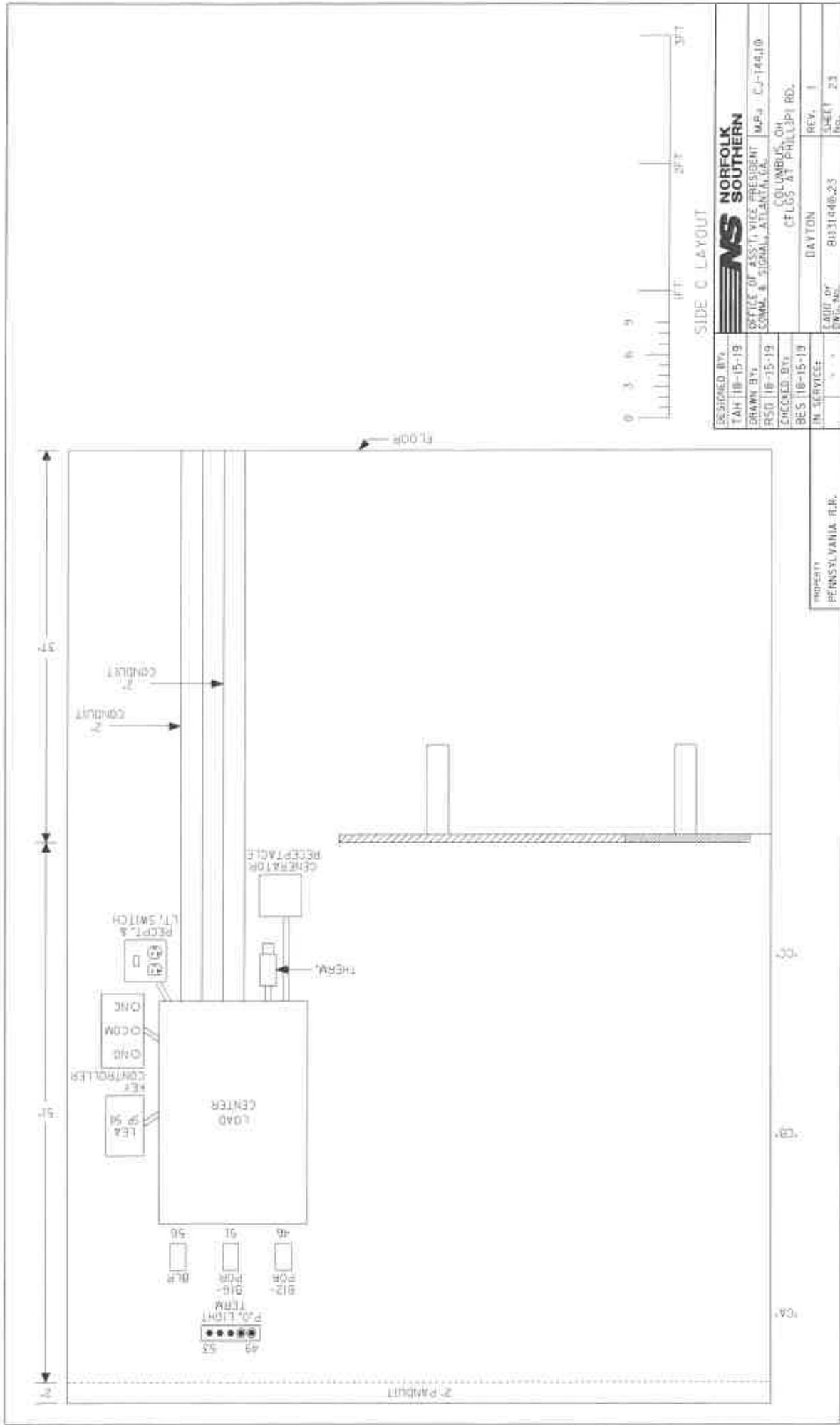
EQUIPMENT RACK #1  
FRONT



SIDE A LAYOUT & RACK PLACEMENT

DESIGNED BY:	TAH 10-15-19	NORFOLK SOUTHERN
DRAWN BY:	RSD 10-15-19	OFFICE OF ASST. VICE PRESIDENT COMM. & SIGNAL, ATLANTA, GA.
CHECKED BY:	BES 10-15-19	COLUMBUS, OH
IN SERVICES:	DAYTON	CFLOS AT PHILLIP RD.
REV. 1	81131440.22	REV. 1
CADD or DWG. NO.	81131440.22	SHEET 22

PROPERTY  
PENNSYLVANIA R.R.

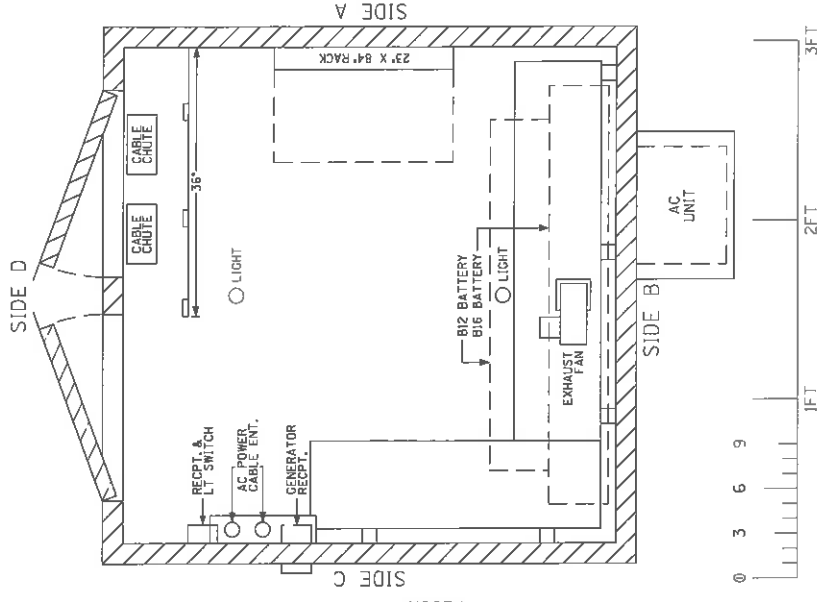
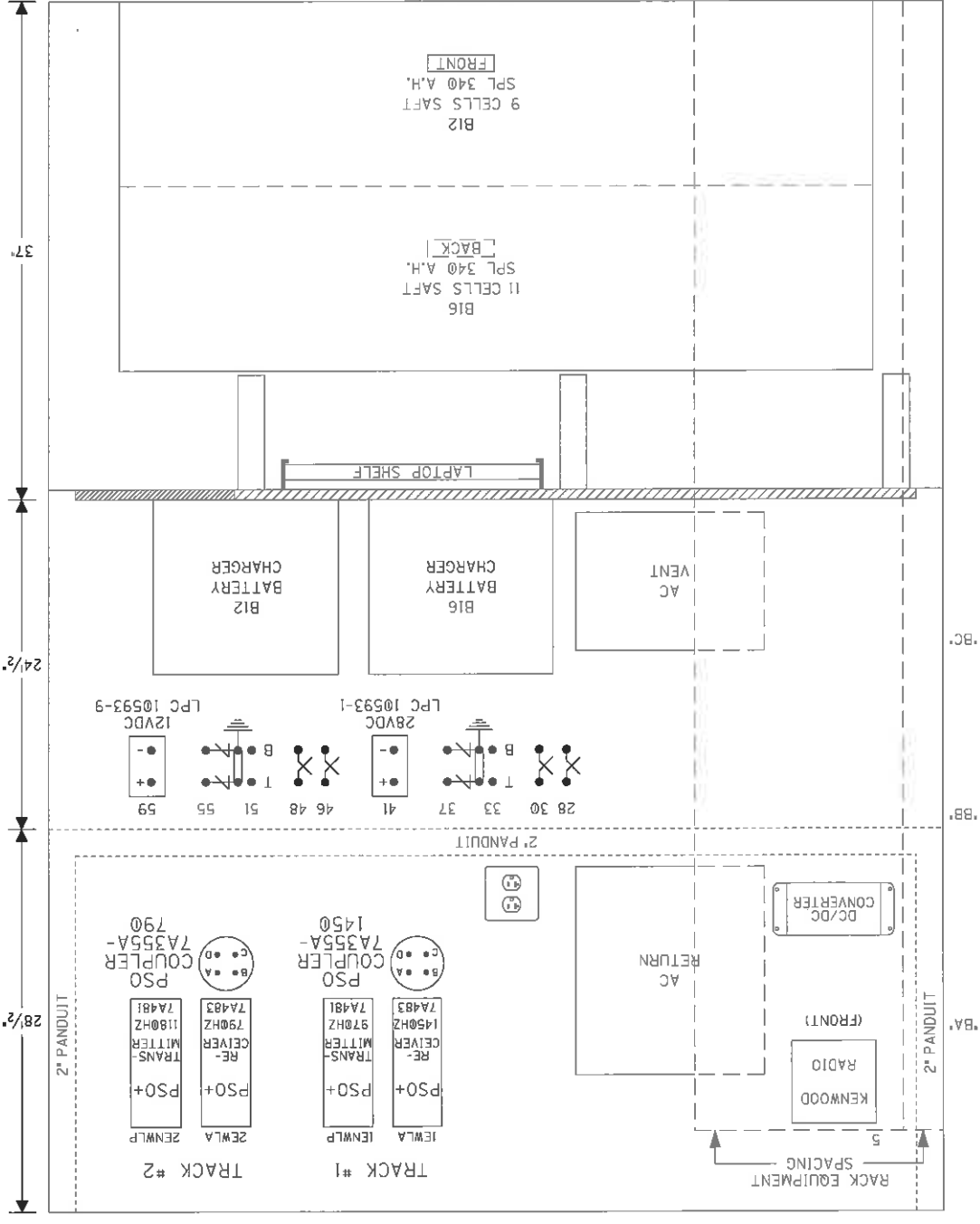


DESIGNED BY: TAM 10-15-19	<b>NORFOLK SOUTHERN</b>
DRAWN BY: RSD 10-15-19	OFFICE OF ASST. VICE PRESIDENT COMM. & SIGNAL, ATLANTA, GA.
CHECKED BY: BES 10-15-19	COLUMBUS, OH CFLOS AT PHILLIPS RD.
IN SERVICE:	DAYTON
DATE OF DWG. NO.	81310405.23
SHEET NO.	23

PROPERTY  
PENNSYLVANIA R.R.

# \*TOP VIEW

6'X6' HOUSE  
(INSULATED)  
\* = 1/2" SCALE



## SIDE B LAYOUT & TOP VIEW

DESIGNED BY:	TAH 10-15-19	<b>NORFOLK SOUTHERN</b>
DRAWN BY:	RSD 10-15-19	OFFICE OF ASST. VICE PRESIDENT COMM. & SIGNAL, ATLANTA, GA.
CHECKED BY:	BES 10-15-19	M.P.: CJ-144.10
IN SERVICE:	DAYTON	COLUMBUS, OH
	REV. 1	CFLGS AT PHILLIP RD.
	CADD or DWG. No.	81131440.24
	SHEET	24
	PROPERTY	PENNSYLVANIA R.R.



## Rail Development Commission

Mike DeWine, Governor  
Jon Husted, Lt. Governor

Mark Policinski, Chair

August 21, 2019

Norfolk Southern Railway Company  
Mr. Kurt Young  
Administrator Highway Grade Crossing Improvements  
1200 Peachtree Street  
Atlanta, GA 30309-3597

RE: PE Authorization Franklin County, CR26/Phillipi Rd., DOT# 513251M PID# 110493

Dear Mr. Young:

A diagnostic review was held at the above grade crossing on April 29, 2019. The crossing has been recommended for modification/upgrade of the current flashing lights and roadway gates.

Norfolk Southern Railway Company is authorized to proceed with the site plans and cost estimates or bid package for this project. This authorization is made with the stipulation and understanding that any field work needs prior approval before work begins. This authorization is made with the stipulation and understanding that an approved estimate may contain entries for items or activities that may be cited and found to be ineligible for federal participation during the project audit. Please note that the railroad must provide ORDC with a plan stamped by a professional engineer licensed in the State of Ohio prior to acceptance and close out of the project.

The diagnostic review form is attached. Please note any recommendations (page 8), if any, made by the team about requirements for this location. Any minor roadway work necessary for MUTCD compliance should be incorporated into the PE and such costs will flow through the railroad reimbursement process.

The Project Manager for this project is Greg Gronbach. Greg Gronbach can be reached at (614) 745-6760, or [Gregory.Gronbach@dot.ohio.gov](mailto:Gregory.Gronbach@dot.ohio.gov), if you have any questions.

Sincerely,

  
Greg Gronbach  
Project Manager

C: Randall Schumacher, Chief, Rail Division, PUCO  
Jill Henry, Rail Specialist, PUCO  
Heather Hamilton, ORDC  
ORDC (file)



Attachments: 3 (diagnostic review form, letter agreement, purchase order)



# OHIO RAIL DEVELOPMENT COMMISSION

Mail Stop #3140, 1980 West Broad Street, Columbus OH 43223

Mike DeWine, Governor • Mark Policinski, ORDC Chairman

July 16, 2019

Norfolk Southern Railway Company  
Mr. Kurt Young  
Administrator Highway Grade Crossing Improvements  
1200 Peachtree Street  
Atlanta, GA 30309-3597

Subject: Grade Crossing Warning Device Improvements, PID 110493  
Franklin County, CR 26/Phillipi Rd., DOT# 513251M

Dear Mr. Young:

A diagnostic review was conducted at the subject grade crossings on 4/29/2019. Based on the review, the current devices will be modified and upgraded.

This project shall be completed in compliance with Agreement No. 17450, dated December 19, 2012, entered into by the State of Ohio and Norfolk Southern Railway Company (NS) and incorporated as if fully rewritten herein. This construction shall also meet the general terms and conditions under the Fixing America's Surface Transportation Act and subsequent amendments and the State of Ohio's Federally Funded Warning Device Program.

Preliminary engineering (PE) and construction costs shall be borne one hundred percent (100%) by ORDC. Reimbursable costs will be limited by the ORDC based on approved estimates and bid tabulations, if applicable. These limits will be quantified by the ORDC in its construction authorization to NS and may be amended by the ORDC based on revised estimates and bid tabulations.

This Letter Agreement and the approved plans constitute the scope of the project. NS shall notify ORDC in writing of any changes in the scope of work which are not in the approved plans and estimates and secure approval in writing of same before the work is performed.

PE will not be commenced by NS prior to ORDC issuing a PE authorization. PE will be submitted by NS to ORDC within ninety (90) days or other time specified by ORDC in the PE authorization. Construction will not be commenced by NS prior to ORDC issuing a construction authorization. Construction will be completed by NS within nine (9) months or other time specified in the time specified by ORDC in the construction authorization.

Please indicate your acceptance of the terms and conditions of this Letter Agreement by signing and returning one (1) copy to me at the address listed above and retain a copy for your files. This Agreement may be executed in one or more counterparts, each of which shall be deemed to be a duplicate original, but all of which taken together shall be deemed to constitute a single Agreement.

Sincerely,

Matthew Dietrich  
Executive Director



[www.rail.ohio.gov](http://www.rail.ohio.gov)

phone: 614.644.0306

IMPROVING RAIL TODAY FOR TOMORROW'S ECONOMY

Norfolk Southern:

By: Patricia T. Whithead

Title: General Manager

Date: 7/29/19

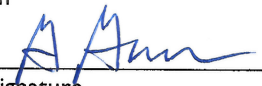

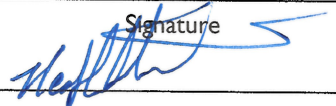
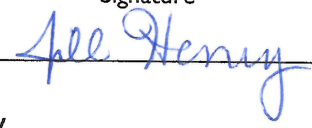
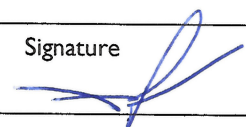

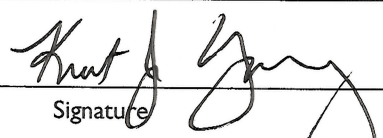
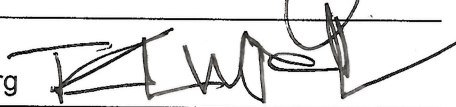
FRA CR26 Phillipi Rd NS PID 110493 513251M

4/29/2019

**Crossing at a glance:**

**ORDC Notes:**

**Please Sign In**

Greg Gronbach	Project Manager	ORDC
Name	Title	Organization
614-745-6760	gregory.gronbach@dot.ohio.gov	
Phone Number	Email	Signature
Cathy Stout	Safety Program Manager	ORDC
Name	Title	Organization
614-971-8470	catherine.stout@dot.ohio.gov	
Phone Number	Email	Signature
Heather Hamilton	Coordinator	ORDC
Name	Title	Organization
614-273-4783	heather.hamilton@dot.ohio.gov	
Phone Number	Email	Signature
Jill Henry	Rail Specialist	PUCO
Name	Title	Organization
614-806-3916	jill.henry@puco.ohio.gov	
Phone Number	Email	Signature
Mike Meeks	F.C Engineer	Franklin County
Name	Title	Organization
614-580-3506	mmeeks@franklincountyengineer.org	
Phone Number	Email	Signature
James Jewell	F.C Engineer	Franklin County
Name	Title	Organization
614-580-5461	jjewel@franklincountyengineer.org	
Phone Number	Email	Signature
Kurt Young		Norfolk Southern
Name	Title	Organization
478-973-3698	kurt.young@nscorp.com	
Phone Number	Email	Signature
Ted Beidler	F.C Engineer	Franklin County
Name	Title	Organization
	tbeidler@franklincountyengineer.org	
Phone Number	Email	Signature

4/29/2019

Please Sign In

Rick McGrath

*Rick McGrath*

Norfolk Southern

Name

Title

Organization

614-395-1429

rick.mcgrath@nscorp.com

Phone Number

Email

Signature

Allen Bell

C&S Supervisor

Norfolk Southern

Name

Title

Organization

614-551-0750

allen.bell@nscorp.com

*Allen Bell*

Phone Number

Email

Signature

Bernice Cage

MORPC

Name

Title

Organization

bcage@morpc.org

Phone Number

Email

Signature

Mark Madden

Norfolk Southern

Name

Title

Organization

~~404 991 0028~~

Mark.Madden@nscorp.com

*Mark M. Madden*

Phone Number

Email

Signature

*CAYLA WIMGERLY*

*NS*

*[Signature]*

Name

Title

Organization

404 991 0028

Phone Number

Email

Signature

Name

Title

Organization

Phone Number

Email

Signature

Name

Title

Organization

Phone Number

Email

Signature

Name

Title

Organization

Phone Number

Email

Signature

Reason for Request: **Extra-Mile**  
(e.g. formula, accident, constituent, etc.)

Date: 4/29/2019

Location Data			
Street or Road Name:		Phillipi Road	
County:	Franklin	Township:	US DOT No.: 513251M
City (in or near):	Columbus	Railroad Name:	RR Milepost: 144.07
Safety Data (Obtain crash reports, if possible)			
	Initial Information (from database)		Revised
Number & dates of vehicle crashes in previous 5 years:	2 - 2/17 & 12/16		
Number & dates of pedestrian/bicycle crashes in previous 5 years:			
Hazard Ranking:	45	Date Run:	04/08/2019

Existing Traffic Control Devices			
Type of Warning Devices	Installed?		Quantity/Comments
<b>HIGHWAY</b>			
Advance Warning Signs (condition?)	<input checked="" type="checkbox"/> Yes	<input type="checkbox"/> No	2
'Stop' Signs	<input type="checkbox"/> Yes	<input checked="" type="checkbox"/> No	
'Stop Ahead' Signs	<input type="checkbox"/> Yes	<input checked="" type="checkbox"/> No	
Pavement Markings (condition?)	<input checked="" type="checkbox"/> Yes	<input type="checkbox"/> No	4 GOOD
Dynamic Envelope Markings (condition?)	<input type="checkbox"/> Yes	<input checked="" type="checkbox"/> No	
Illumination	<input type="checkbox"/> Yes	<input checked="" type="checkbox"/> No	
'No Turn' Signs (highway/passive)	<input type="checkbox"/> Yes	<input checked="" type="checkbox"/> No	
Barriers/fencing (pedestrian/bicycle)	<input type="checkbox"/> Yes	<input checked="" type="checkbox"/> No	
LOOK Sign	<input type="checkbox"/> Yes	<input checked="" type="checkbox"/> No	
Do Not Stop On Track Sign	<input type="checkbox"/> Yes	<input checked="" type="checkbox"/> No	
<b>RAILROAD</b>			
Crossbucks	<input checked="" type="checkbox"/> Yes	<input type="checkbox"/> No	2
Crossbucks – assembly with Stop	<input type="checkbox"/> Yes	<input checked="" type="checkbox"/> No	
Crossbucks – assembly with Yield	<input type="checkbox"/> Yes	<input checked="" type="checkbox"/> No	
Mast-Mounted Flashing Lights	<input checked="" type="checkbox"/> Yes	<input type="checkbox"/> No	
Cantilever Flashing Lights	<input checked="" type="checkbox"/> Yes	<input type="checkbox"/> No	Number: Length:
Side Lights	<input type="checkbox"/> Yes	<input checked="" type="checkbox"/> No	
LED or Incandescent Lights? Size?	<input checked="" type="checkbox"/> Yes	<input type="checkbox"/> No	INCANDESCENT 12"
Automatic Gates	<input checked="" type="checkbox"/> Yes	<input type="checkbox"/> No	Number: 2 Length: 35'
Bells	<input checked="" type="checkbox"/> Yes	<input type="checkbox"/> No	Number: 1
Sidewalk/Pedestrian Gate Arms	<input type="checkbox"/> Yes	<input checked="" type="checkbox"/> No	Number: Length:
'No Turn' Signs (railroad/active)	<input type="checkbox"/> Yes	<input checked="" type="checkbox"/> No	
Is crossing flagged by train crew?	<input type="checkbox"/> Yes	<input checked="" type="checkbox"/> No	
<b>OTHER</b>			
	<input type="checkbox"/> Yes	<input type="checkbox"/> No	

## Railroad Data

Type of Train: ☒ Freight ☐ Intercity Passenger ☐ Transit ☐ Shared Use Transit ☐ Commuter ☐ Tourist/Other

Railroad Characteristics	Initial Information (from database)	Revised
Total trains per day	17	THU
<1 per day? Trains per week		
Day thru trains	8	
Night thru trains	5	
Switching	4	
Total number of tracks	2	
Number of main tracks	2	
Number of other tracks	0	
Maximum train speed	50	
Typical train speed	40-50	
Amtrak	0	

Are there other track(s) crossing this same roadway within 100ft of this crossing? ☐ Yes ☒ No

If yes, Crossing DOT# (if different) \_\_\_\_\_

If yes, distance \_\_\_\_\_ (take measurement between track centerlines at closest point along roadway)

If multiple tracks, can two trains occupy crossing at the same time? ☒ Yes ☐ No

Can one train block the motorists' view of another train at the crossing? ☒ Yes (explain below) ☐ No

Can one or more tracks be eliminated through the crossings? ☐ Yes ☒ No

Comments: PARRELL TRACKS

Circuitry: ☒ Constant Warning Time ☐ Motion Detection ☐ AFO ☐ PTC ☐ DC ☐ Other \_\_\_\_\_

Roadway Data		
Local Highway Authority: Franklin County		
Roadway Characteristics	Initial Information (from database)	Revised
Average Daily Traffic	14,500	11,702 (2018)
Highway Paved	<input checked="" type="checkbox"/> Yes <input type="checkbox"/> No	<input type="checkbox"/> Yes <input type="checkbox"/> No
Roadway Surface: <input checked="" type="checkbox"/> Blacktop <input type="checkbox"/> Gravel <input type="checkbox"/> Concrete Other _____		
Roadway width (paved/travelled way): 48' ft		
Number of Highway Lanes	4	
Urban or Rural	Urban - Minor Collector	
Vehicle Speed: 45 <sup>mph</sup> MPH		
School Bus Operation: <input checked="" type="checkbox"/> Yes <input type="checkbox"/> No Amount 8 LIGHT TO MODERATE		
Location of nearby schools: PRAIRIE LINCOLN ELEMENTARY - 1 MILE WEST. IMAGINE SCHOOL GREAT WESTERN 1.856		
Hazardous Materials Trucks: <input checked="" type="checkbox"/> Yes <input type="checkbox"/> No Amount (from FRA) 4% LHA verified/changed?		
Shoulders: <input checked="" type="checkbox"/> Yes <input type="checkbox"/> No		
Is the Shoulder Surfaced? <input checked="" type="checkbox"/> Yes <input type="checkbox"/> No If yes, shoulder width: 5 ft.		
Is there existing guardrail along the roadway in crossing vicinity? <input type="checkbox"/> Yes <input checked="" type="checkbox"/> No		
Crossing Angle <input type="checkbox"/> 0-29° <input type="checkbox"/> 30-59° <input checked="" type="checkbox"/> 60-90° Measured in _____ Quadrant?		
Quadrant NW Curb & Gutter:	Quadrant SE Curb & Gutter:	
<input type="checkbox"/> Functional (Curb height = 4" or more)	<input type="checkbox"/> Functional (Curb height = 4" or more)	
<input type="checkbox"/> Non-functional (Curb height = less than 4")	<input type="checkbox"/> Non-functional (Curb height = less than 4")	
<input checked="" type="checkbox"/> None	<input checked="" type="checkbox"/> None	
Is there a nearby intersection that could cause queuing over the crossing? <input type="checkbox"/> Yes <input checked="" type="checkbox"/> No		
If yes, distance _____		
Is this intersection signalized? <input type="checkbox"/> Yes <input type="checkbox"/> No		
Are there signals currently interconnected with the existing crossing warning devices? <input type="checkbox"/> Yes <input checked="" type="checkbox"/> No		
Is there a 'Do Not Stop on Track' sign? <input type="checkbox"/> Yes <input checked="" type="checkbox"/> No		
Is a roadway improvement project (e.g. widening, turn lanes, nearby new or upgraded traffic signal, sidewalk) planned at or near this location in the foreseeable future? <input type="checkbox"/> Yes <input checked="" type="checkbox"/> No		
If yes:		
Improvement type _____	Lead Agency _____	Timeline/completion _____

## Pedestrian & Bicycle Data

Regular pedestrian usage: ☒ Yes ☐ No Volumes: ☒ Occasional ☐ <20 ☐ 20-60 ☐ >60

Is sidewalk present in the approach? ☐ Yes ☒ No Quadrants:

Does crossing surface accommodate pedestrians? ☐ Yes ☒ No

Both sides of roadway? ☐ Yes ☒ No If no, which side is paved?

Pedestrian generators in close proximity (e.g. schools, sports/entertainment venues)? ☐ Yes ☒ No

Comments: **COMMERCIAL / INDUSTRIAL AREA.**

Regular bicycle usage: ☐ Yes ☒ No

☐ Roadway ☐ Dedicated Lane (on street) ☐ Dedicated Path (off street) ☐ Shared Use (pedestrian/bicycle) Path  
☐ Bikes must use sidewalk

Future plans for pedestrian or bicycle routes? ☐ Yes ☒ No

Comments:

## Utility Information

Is commercial power available? ☒ Yes ☐ No

Utility Provider (Company Name) **AEP**

Nearest Available Power Source **AT CROSSING**

What other utilities are present? ☒ Gas ☐ Cable ☐ Telephone ☒ Fiber Optic Cable (add locations to sketch)  
☐ Petroleum ☒ Water ☒ Sanitary Sewer ☐ Other

Comments:

## Surface

Surface review form completed? ☐ Yes ☒ No **SURFACE FAIRLY NEW - GOOD CONDITION.**

## Sight Preview (REFER TO TABLES)

If non-gated crossing, is clearing sight distance adequate in all quadrants? (See Table 1) ☒ Yes ☐ No

Is stopping sight distance adequate? (See Table 2) ☒ Yes ☒ No If no, which quadrant? \_\_\_\_\_

When considering recommendations for bicycle treatments:

Bicycle sight distance adequate? ☒ Yes ☐ No If no, which quadrant? \_\_\_\_\_

When considering recommendations for pedestrian treatments:

Pedestrian sight distance adequate? ☒ Yes ☐ No If no, which quadrant? \_\_\_\_\_

## Potential Red Flags / Project Challenges

Traffic Signal Preemption (include traffic signal intersection name and LHA with jurisdiction over traffic signal, if known):

N/A

Crossing Consolidation or Closure:

NO

Real Estate or ROW:

NO

Culvert / Drainage / Ballast Conditions:

CULVERTS ON BOTH NORTH AND SOUTH SIDES OF TRACKS.

Roadway and/or Sidewalks:

NO

Circuitry (e.g. reaches out to other crossings, specific needs, etc.):

NO

Environmental:

NO

Utilities:

NO

Other:

## Potential Closure

Is it the consensus of the Diagnostic Review Team that this is a potential closure project? **NO**

Explain reasons: **MAJOR ARTERIAL ROADWAY IN CITY.**

## Diagnostic Team Recommendations

<input type="checkbox"/> No improvements needed	Quadrants Needed
<input checked="" type="checkbox"/> Install/upgrade active devices	
<input type="checkbox"/> Automatic Flashing Lights (AFLS)	
<input type="checkbox"/> AFLS / Cants	
<input type="checkbox"/> AFLS / Gates	
<input checked="" type="checkbox"/> AFLS / Gates / Cants	<b>1</b>
<input checked="" type="checkbox"/> Bells / number	
<input checked="" type="checkbox"/> Upgrade circuitry / type	<b>GCP 4000</b>
<input checked="" type="checkbox"/> Sidelights	<b>FOR GLOBAL COLD STORAGE ENTRANCE</b>
<input type="checkbox"/> LED Upgrades	
<input type="checkbox"/> Guardrail Needed	
<input type="checkbox"/> Install/Replace curb	
<input checked="" type="checkbox"/> Bungalow placement & offset from rail & highway	<b>BEHIND OLD HOUSE</b>
<input checked="" type="checkbox"/> Other (define)	<b>BEHIND WALL + COLLECT</b>
Comments: <b>INCLUDE ESTIMATE FOR SURFACE. (possible future surface project - AR + LHA)</b>	
<input type="checkbox"/> Install/upgrade traffic signal preemption	
Other (define): <b>COUNTY TO REPAINT PAVEMENT EDGE LINES + MARKINGS.</b>	

## Diagnostic Team Recommendations (cont.)

### PEDESTRIAN/BICYCLE Treatments (additional, not included above)

<input type="checkbox"/> Crossing Surface (specify)	<input type="checkbox"/> Sidewalk (specify)
<input type="checkbox"/> Detectable warning surfaces	<input type="checkbox"/> LOOK Sign (R15-8)
<input type="checkbox"/> Stop lines	<input type="checkbox"/> Illumination
<input type="checkbox"/> Dynamic envelop markings	<input type="checkbox"/> Channelization
<input type="checkbox"/> Path delineation	<input type="checkbox"/> Fencing/barriers
<input type="checkbox"/> Other	

Comments:

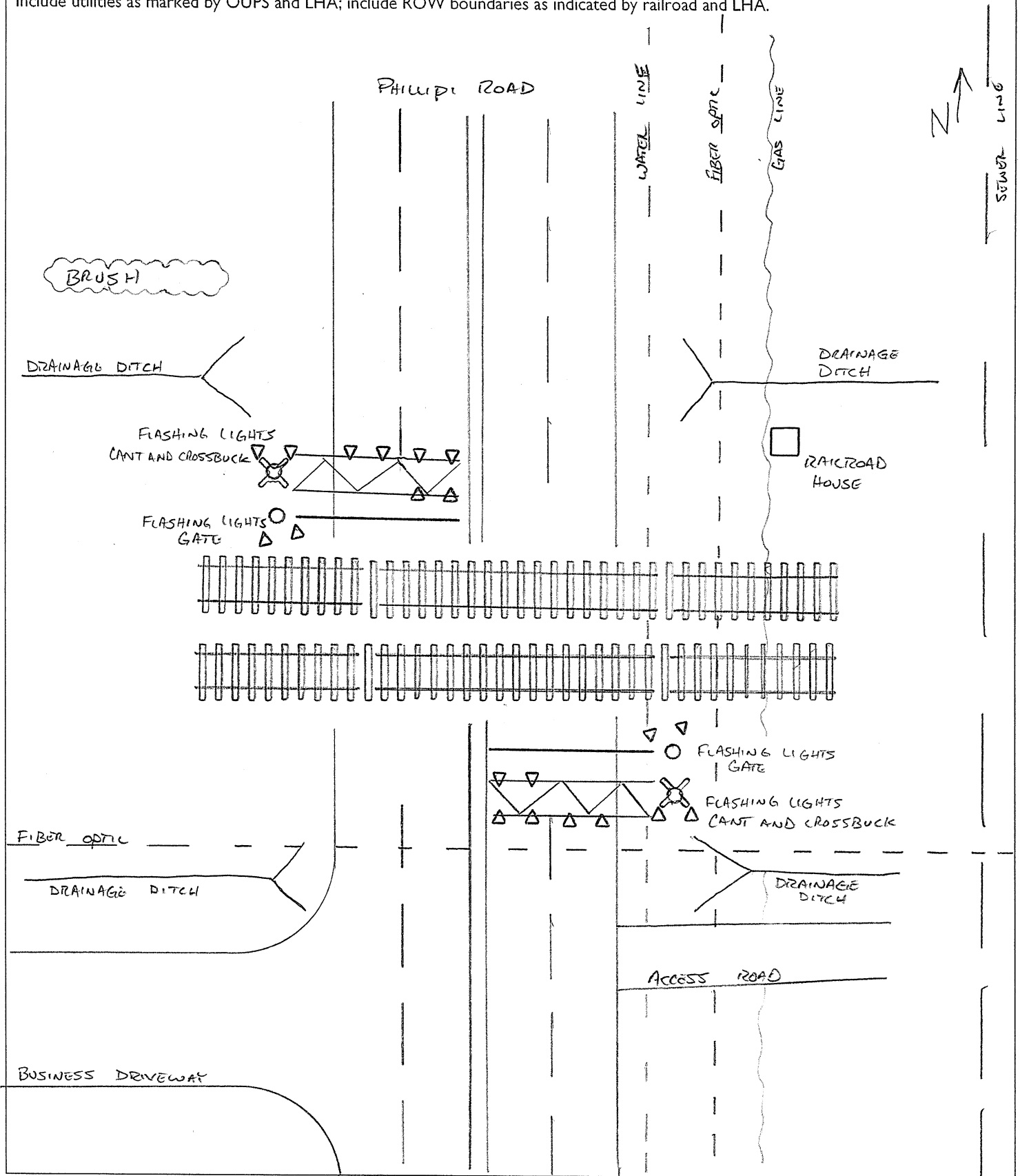
**Acknowledgement of Recommendations** (each entity represented at the diagnostic must have at least one signature/initial acknowledgement):

**CHWG** **July**

**K/H** **20.24.20.**

## Field Sketch (optional)

Include utilities as marked by OUPS and LHA; include ROW boundaries as indicated by railroad and LHA.



### Clearing Sight Distances

Maximum Authorized Train Speed	Distance (dT) Along Railroad from Crossing (ft)
1 - 10	240
15	360
20	480
25	600
30	720
35	840
40	960
45	1080
50	1200
55	1320
60	1440
65	1560
70	1680
75	1800
80	1920
85	2040
90	2160

Source: R-H Grade Crossing Handbook Table 36 (pp. 132-133)

#### Notes:

All calculated distances are rounded up to the next higher 5-foot increment.

Distances indicated are for 65-ft double bottom semi-tractor trailers and level single track 90 degree crossings; and may need to be adjusted for multiple tracks, skewed crossings or approaches on grades.

Clearing Sight Distance is to be measured in each vehicle travel direction at non-gated crossings as viewed from a point 25 feet from centerline of nearest track in the center of whichever travel lane is nearest the direction along track being measured.

### Stopping Sight Distances

Highway Vehicle Speed	Distance (dH) Along Roadway from Crossing (ft)
0	n/a
5	50
10	70
15	105
20	135
25	180
30	225
35	280
40	340
45	410
50	490
55	570
60	660
65	760
70	865

Source: R-H Grade Crossing Handbook Table 36 (pp. 132-133)

#### Notes:

All calculated distances are rounded up to the next higher 5-foot increment.

Distances indicated are for 65-ft double bottom semi-tractor trailers on dry level pavements.

Stopping Sight Distance is to be measured on each roadway approach to crossing from stop bar.

## Bicycle & Pedestrian Clearing Sight Distances

Clearing Sight Distance from Stop Position*											
Crossing of one track								Crossing 2 Tracks		Crossing 3 Tracks	
Train Speed	Car	Single-unit Truck	Bus	WB-50 Semitruck	65-foot Double Truck	Pedestrian <sup>1</sup>	Bicyclist <sup>2</sup>	Pedestrian <sup>1</sup>	Bicyclist <sup>2</sup>	Pedestrian <sup>1</sup>	Bicyclist <sup>2</sup>
10	105	185	200	225	240	120	100	180	120	240	140
20	205	365	400	450	485	240	200	360	240	480	270
25	255	455	500	560	605	300	250	450	290	590	340
30	310	550	600	675	725	360	290	530	350	710	410
40	410	730	795	895	965	480	390	710	470	950	540
50	515	910	995	1,120	1,205	590	490	890	580	1180	670
60	615	1,095	1,195	1,345	1,445	710	580	1060	700	1420	810
70	715	1,275	1,395	1,570	1,680	830	680	1240	810	1650	940
80	820	1,460	1,590	1,790	1,925	950	780	1420	930	1890	1080
90	920	1,640	1,790	2,015	2,165	1060	870	1590	1040	2120	1210

\*A single track, 90-degree, level crossing

<sup>1</sup> Walking 3.5 feet per second across tracks 15 feet apart, with a 2-second reaction time to reach a decision point 10 feet before the center of the first track, and clearing 10 feet beyond the centerline of the second track.

<sup>2</sup> Bicycling 8 miles per hour across tracks 15 feet apart, from a stopped position 10 feet before the center of the first track with an acceleration of 2.5 feet per second, and clearing 10 feet beyond the centerline of the second track on a bike of 6 feet length.

High Hazard Crossing with Active Warning Devices			
Street Name: Phillipi Road		County: Franklin	
LHA: Franklin County		USDOT#: 513251M	
Nearest City: Columbus		Hazard Rank: 45	
Roadway Information			
ADT: 14,500		Posted Speed Limit: n/a	
Railroad: Norfolk Southern		Number of Tracks: 2	
Train Count: 17		Speed Over Crossing: 40-50	
Storage Distance (Ft.):		Train Detection Type:	
Accidents			
Accident Factors		# of Accidents in Last 5 Years:	
		# of Fatalities in Last 5 Years:	
Accident Date	2/19/2017	12/19/2016	
Position of Accident	Moving over crossing	Stalled or stuck on crossing	
Circumstance	Rail equipment struck by highway user	Rail equipment struck highway user	
Visibility/Time of Day	Dark / 3:00 am	Dark / 10:23 pm	
Weather Conditions	Clear / 56 degrees	Clear / 13 degrees	
Crossing Interconnect.	No	No	
Crossing Illuminated	No	No	
Drove Around Train	No	No	
Highway User Action	Went around the gate	Stopped on crossing	
Alcohol/Drug Related?	Suspected	n/a	
Driver Speeding?	n/a	n/a	
Other Notes: 2017 - Traveling North on Phillipi, vehicle struck a moving train. Sited for disobeying train signal. No injuries reported. 2016 - Vehicle 1 was rear-ended northbound on Phillipi, south of the tracks, being pushed over the tracks. Vehicle 2 came to rest on the tracks and was stuck but unoccupied when train struck. No injuries reported.			
Notes:			

**This foregoing document was electronically filed with the Public Utilities**

**Commission of Ohio Docketing Information System on**

**2/5/2020 2:20:37 PM**

**in**

**Case No(s). 20-0358-RR-FED**

Summary: Application In the Matter of a Request for Upgrades to the Active Warning Devices at the Norfolk Southern Railway Crossing, Phillipi Road, DOT#513-251M, in Franklin County, Ohio. electronically filed by Mrs. Jill A Henry on behalf of PUCO/Rail Division