

Memo

To: Docketing Division
From: Jill Henry, Rail Specialist, Rail Division
Cc: PUCO Legal Department
Date: 3/6/2019

Re: PUCO Case No. 19-581-RR-FED- In the Matter of a Request for the Installation of Active Warning Devices at the RJ Corman Railroad Crossing, Mt. Pleasant Road/TR 424 DOT#142-594T in Tuscarawas County, Ohio.

On October 15, 2018, the Ohio Rail Development Commission (ORDC) authorized funding for RJ Corman Railroad to install lights and gates at Mt. Pleasant Rd/TR 424 DOT#142-594T in Tuscarawas County, Ohio. The crossing was surveyed, on May 17, 2018, and found to warrant the upgrades. The electric utility provider for the crossing is AEP Ohio.

The project will be paid for with federal funds and is actual cost. The plans and estimates for the project in the amount of \$221,482.72 have been approved. Construction may commence at once. **Staff requests a Finding & Order with completion of the project in nine months.** Staff requests that the following language be incorporated in the Finding & Order:

It is expected that all work necessary for FHWA acceptance of the warning devices will be completed by the in-service due date and that the railroad will be responsible for this work. This work includes, but is not limited to:

- Any ancillary work to make the warning devices function as designed and visible to the roadway user, and
- MUTCD compliance, including minor roadway work if necessary.

Please serve the following parties of record:

RJ Corman Railroad
James Kelley
Funded Projects Coordinator
P.O. Box 788
101 RJ Corman Drive
Nicholasville, KY 40356

RJ Corman Railroad
Deborah Hawley
Funded Projects Coordinator
P.O. Box 788
101 RJ Corman Drive
Nicholasville, KY 40356

Ohio Rail Development Commission
Cathy Stout
Safety Manager
1980 West Broad Street
Mail Stop #3140
Columbus, OH 43223

Dover Township, Tuscarawas County
Trustees
2000 Red Hill Road
Dover, Ohio 44622

AEP Ohio

**OHIO RAIL DEVELOPMENT COMMISSION
INTER-OFFICE COMMUNICATION**

TO: Randall Schumacher, Supervisor, Rail Division, PUCO
FROM: Cathy Stout, Manager, Safety Section, ORDC
BY: Greg Gronbach, Project Manager, Safety Section, ORDC
SUBJECT: Tuscarawas County, TR424/Mt Pleasant Rd, DOT# 142594T, PID# 108518
DATE: February 22, 2019

The Public Utilities Commission of Ohio (PUCO) established a diagnostic survey at the subject location on May 17, 2018. The Ohio Rail Development Commission (ORDC) attended the review. The Diagnostic Team recommended the improvement of warning devices to flashing lights/roadway gates and curbs. Copies of the diagnostic review form and the plan and estimate are attached.

PE has already been provided by the railroad. ORDC approves the site plans and estimates as provided. Please issue a construction-only order for the project outlined above. This authorization is made with the stipulation and understanding that an approved estimate may contain entries for items or activities that may be cited and found to be ineligible for federal participation during the project audit.

It is expected that all work necessary for FHWA acceptance of the warning devices will be completed by the in-service due date and that the railroad will be responsible for this work. This work includes, but is not limited to:

- any ancillary work to make warning devices function as designed and visible to the roadway user, and
- MUTCD compliance – including minor roadway work if necessary.

Thank you for your assistance with these matters.


Greg Gronbach
Project Manager

Attachment: Diagnostic Review
Plan & Estimate

c: Jill Henry, PUCO
Cathy Stout, ORDC
Heather Hamilton, ORDC
ORDC Project Manager (file)



OHIO RAIL DEVELOPMENT COMMISSION

Mail Stop #3140, 1980 West Broad Street, Columbus OH 43223

Mike DeWine, Governor • Mark Policinski, ORDC Chairman

February 22, 2019

Ms. Deborah J. Hawley
RJ Corman Railroad Group LLC
101 RJ Corman Drive
P.O. Box 788
Nicholasville, Ky 40356

RE: Tuscarawas County, TR424/Mt Pleasant Rd, DOT# 142594T, PID# 108518
Grade Crossing Warning Device Improvement

Dear Ms. Hawley:

The plan and estimate dated February 13, 2019, for the referenced project is acceptable. RJ Corman Railroad Group LLC may proceed with the construction of the proposed grade crossing warning system in accordance with the abbreviated plan. This authorization is made with the stipulation and understanding that the approved estimate may contain entries for items or activities that may be cited and found to be ineligible for federal participation during the project audit. Reimbursement of eligible actual cost is limited to \$221,482.72. Additional costs must be approved in writing by the Ohio Rail Development Commission (ORDC) prior to being incurred. Emergency verbal authorizations by ORDC may be permitted and will be confirmed by ORDC in writing within ten (10) business days of the verbal approval.

This authorization is contingent upon RJ Corman Railroad Group LLC accepting the following instructions:

1. RJ Corman Railroad Group LLC's project foreman will furnish written notification five (5) working days prior to the date work will start at the project site to Greg Gronbach, ORDC, email Gregory.Gronbach@dot.ohio.gov, and to the Public Utilities Commission of Ohio at Jill.henry@puc.state.oh.us. RJ Corman Railroad Group LLC's project foreman will also notify the same of any stops and re-starts of the work activity and of the date work was completed for the project.
2. RJ Corman Railroad Group LLC will arrange for utilities to be located at the project site by the Ohio Utilities Protection Service (OUPS) prior to any construction activities at the site. Utilities that are not participating members of the service must be contacted directly by RJ Corman Railroad Group LLC.
3. RJ Corman Railroad Group LLC's project foremen will notify Mr. Gronbach at 614-745-6760 (telephone) or Gregory.Gronbach@dot.ohio.gov (email) of any changes in the scope of work, cost overruns, material changes, etc. which are not included in the approved plan and estimate and secure approval of same before the work is performed.



www.rail.ohio.gov

phone: 614.644.0306

IMPROVING RAIL TODAY FOR TOMORROW'S ECONOMY

4. Open cut of roadways is *not permitted* except in unusual circumstances and must be coordinated with the local highway authority and preapproved by ORDC.
5. RJ Corman Railroad Group LLC will furnish two (2) copies of each partial bill to ORDC. Please find the enclosed ODOT Purchase Order to reference when billing.
6. RJ Corman Railroad Group LLC will furnish two (2) copies of the final all-inclusive bill to ORDC stating the exact dates of starting and completing work, the initial and final dates of construction and location where the accounts may be audited.
7. This installation will include any ancillary work to make the warning devices function as designed and meet MUTCD.

This project is authorized for construction under the master agreement between Ohio Rail Development Commission, Public Utilities Commission of Ohio.

Thank you for your assistance with these matters.

Sincerely,


Greg Gronbach
Project Manager

C: Randall Schumacher, Rail Division Supervisor, PUCO
Jill Henry, Rail Division Specialist, PUCO
Cathy Stout, ORDC
Heather Hamilton, ORDC
ORDC (file)



Rj Corman Railroad Group



A Limited Liability Holding Company
101 RJ Corman Drive • PO Box 788 • Nicholasville, KY 40340-0788
(859) 881-7521 • Fax: (859) 885-7804 • www.rjcorman.com

2/13/2019

RJ Corman Railroad Company / Cleveland Line

County: Tuscarawas
Location: Mt. Pleasant Rd. / TR 424
DOT #: 142592T
MP: 77.4

Estimate for Signal Warning System & Installation

Materials	Qty.	Description	Extension
	1	Signal Materials	\$ 94,353.82
	1	Freight	\$ 1,775.00
	1	Power Service Upgrade	\$ 8,000.00
	1	Road Bore and Conduit Install	\$ 6,000.00
	1	Miscellaneous Materials	\$ 500.00
	1	Curb Installation	\$ 5,000.00
	30 tons	Rock for Backfill	\$ 1,500.00
Labor		Description	Extension
	1	Engineering	\$ 9,529.00
	1	Shop Wiring/Test	\$ 7,530.00
	1	Field Installation (Equipment Included)	\$ 83,719.90
	1	Railroad Inspector	\$ 1,430.00
	1	Mobilization/Demobilization	\$ 2,145.00
Project Total			<u>\$ 221,482.72</u>

TO NORTH
M.P. (INCREASING)

TO SOUTH
M.P. (DECREASING)

Ohio Utilities Protection Service

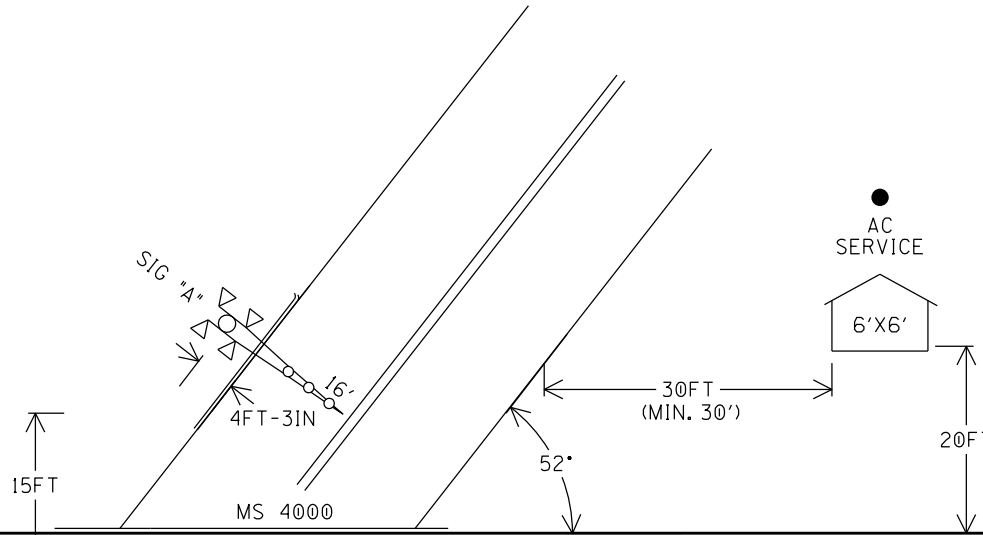
Call 811
before you dig



(A)

(C)

R.O.W. 35' R.O.W. 35'



(D)

(B)

NOTES:

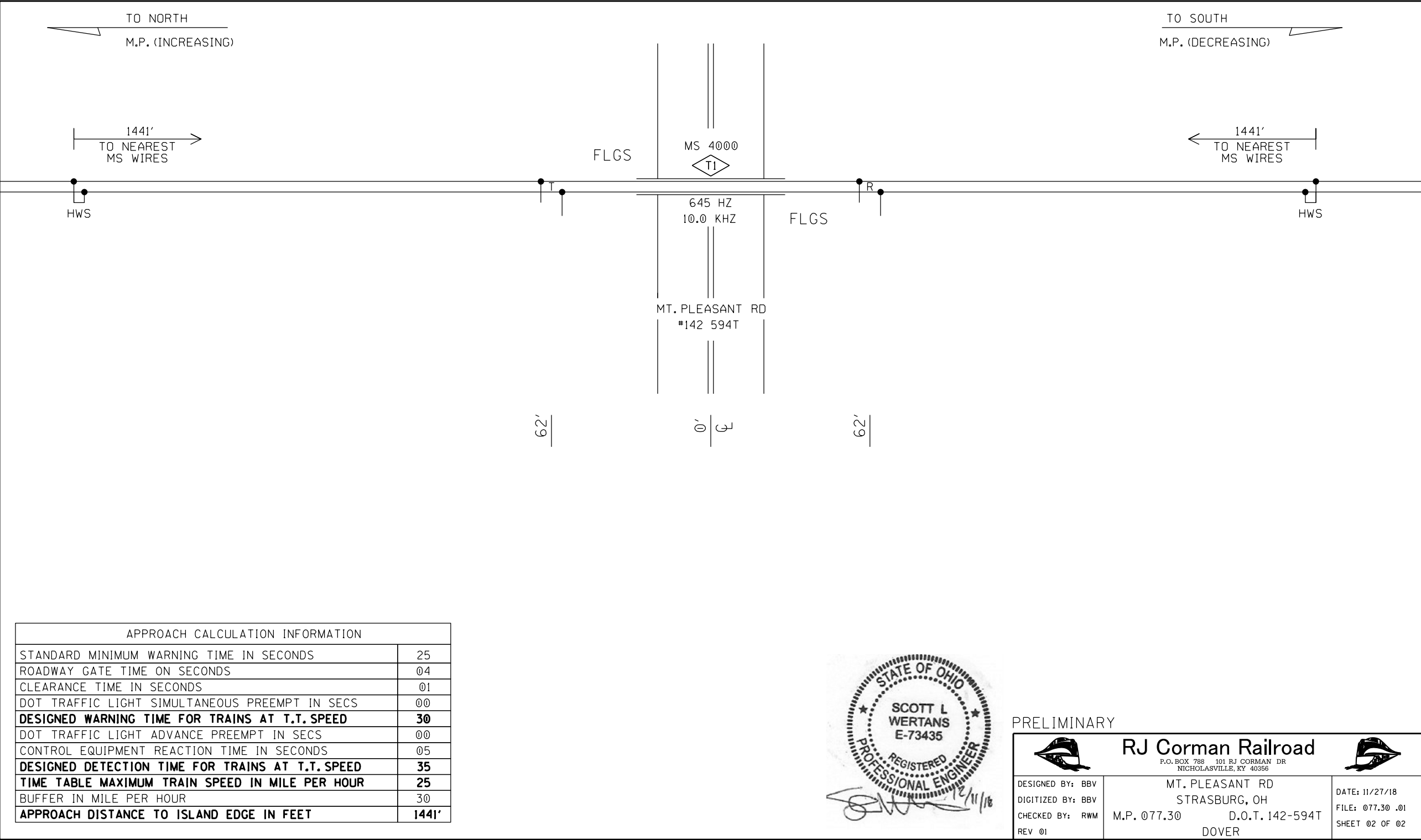
1. MAX. TRAIN SPEED 25 M.P.H.
2. SIGNAL "A" TO HAVE BELL.
3. LOCATE U/G UTILITIES & CABLE BEFORE DIGGING.
4. CROSSING LOCATED IN TUSCARAWAS COUNTY.
5. NEW CURBS TO BE INSTALLED.

(A) (B) (C) (D) = QUADRANT MARKERS



SCALE: 1" = 20'
PRELIMINARY


 RJ Corman Railroad <small>P.O. BOX 788 101 RJ CORMAN DR NICHOLASVILLE, KY 40356</small>				
DESIGNED BY: BBV	MT. PLEASANT RD		DATE: 11/27/18	
DIGITIZED BY: BBV	STRASBURG, OH		FILE: 077.30 .01	
CHECKED BY: RWM	M.P. 077.30	D.O.T. 142-594T	SHEET 01 OF 02	
REV 01	DOVER			



APPROACH CALCULATION INFORMATION	
STANDARD MINIMUM WARNING TIME IN SECONDS	25
ROADWAY GATE TIME ON SECONDS	04
CLEARANCE TIME IN SECONDS	01
DOT TRAFFIC LIGHT SIMULTANEOUS PREEMPT IN SECS	00
DESIGNED WARNING TIME FOR TRAINS AT T.T. SPEED	30
DOT TRAFFIC LIGHT ADVANCE PREEMPT IN SECS	00
CONTROL EQUIPMENT REACTION TIME IN SECONDS	05
DESIGNED DETECTION TIME FOR TRAINS AT T.T. SPEED	35
TIME TABLE MAXIMUM TRAIN SPEED IN MILE PER HOUR	25
BUFFER IN MILE PER HOUR	30
APPROACH DISTANCE TO ISLAND EDGE IN FEET	1441'



PRELIMINARY



RJ Corman Railroad
P.O. BOX 788 101 RJ CORMAN DR
NICHOLASVILLE, KY 40356

MT. PLEASANT RD
STRASBURG, OH

M.P. 077.30 D.O.T. 142-594T
DOVER

DATE: 11/27/18
FILE: 077.30 .01
SHEET 02 OF 02

Vendor	Vendor Part Number	RJC Part Number	Description	UOM	Order Qty	NOTES
HOUSE MATERIAL - POWER						
PTMW	91000539 C-1	70-1000-A2348	ENCLOSURE, HOUSE, 6'X6' ALUMINUM, RJC 3	1 ea	1	
L&W	3A900436	70-1000-A2540	ROTARY SWITCH BOX, ASSY, 2-POSITION, "NORMAL-EMERGENCY", 2NO/2NC CONTACTS	1 ea	1	
ERICO	EPD120/240TDFL	70-1000-A1881	ERICO PROTECTION DEVICE, PRIMARY,120/240V, EPD	1 ea	1	
SIEMENS	4000-44700-0000	70-1000-A1729	EQUALIZER, BASIC 44700	1 ea	3	
ERICO	EPD2050F	70-1000-A2510	SIGNAL BLOCK PROTECTOR, 30KA, 35VAC/50VDC, 2TERM, PKG 10 ONLY	1 ea	6	
ALSTOM	250183-001	70-1000-A1414	TERMINAL BLOCK, AAR, 2-3/8"CENTERS, 1X2, NO CONNECTING LINK	1 ea	7	
OKONITE	152-11-3038	70-1000-A2381	WIRE, CASE, T.C. BLUE, #10, OKONITE	1 ft	400	
OKONITE	152-11-3002	70-1000-A2382	WIRE, CASE, T.C. BLUE, #16, OKONITE	1 ft	300	
SIEMENS	400003	70-1000-A2235	RELAY, NEUTRAL REGULAR RELEASE, 4FB-2F-1B-900 OHM	1 ea	1	
SIEMENS	420000-75X	70-1000-A2359	RELAY, SOCKET ASSY, ST RELAY, W/ VOLTAGE TEST KIT	1 ea	1	
NRS	22290-10	70-1000-A1955	BATTERY CHARGER, 115/230V IN, 10-17V OUT, 20A OUT MAX, ELC-12/20, 22290-10	1 ea	1	
NRS	22400-10	70-1000-A1956	BATTERY CHARGER, 115/230V IN, 10-17V OUT, 40A OUT MAX, ELC-12/40, 22400-10	1 ea	1	
SOLARIS	50LF13-RR	70-1000-A2565	BATTERY CELL, VRLA, 2V, 310 AH, 50LF13	1 ea	6	
SOLARIS	50LF17-RR	70-1000-A2566	BATTERY CELL, VRLA, 2V, 414 AH, 50LF17	1 ea	7	
GENESIS TECHNOLOGIES, INC	T-RX7100	70-1000-A1935	ELECTRONICS, SHUNT ENHANCER, 7.1 VDC OUTPUT, 120 VAC or 12 VDC INPUT, (T-RX7100)	1 ea	1	
HOUSE MATERIAL - ELECTRONICS/RELAYS						
SIEMENS	8421-80490-0001	70-1000-A1569	ELECTRONICS, MS 4000, SINGLE, 1 TRK UNIT, REDUNDANT	1 ea	1	
SIEMENS	9000-91160-0101	70-1000-A1744	ELECTRONICS, SOLID STATE CROSSING CONTROLLER, 40 AMP, (SSCC IIIA)	1 ea	1	
SIEMENS	9000-91170-0001	70-1000-A1549	ELECTRONICS, GCP 4000, LIGHTNING SURGE PANELS, 91170-01	1 ea	1	
HOUSE MATERIAL - MISC						
NRS	82687-3-P	70-1000-A2186	BATTERY TRAY, 12"X38"	1 ea	1	
NRS	82687-1-P	70-1000-A2437	BATTERY TRAY, 12"X24"	1 ea	1	
McMASTER-CARR	92470A247	70-1000-A1907	SCREW, #10 PHILLIPS, SHEET METAL, 1", PKG 100	100 pk	2	
McMASTER-CARR	7130k41	70-1000-A1900	CABLE TIE, NYLON, 6" L, 1-1/2" BUNDLE DIA., PKG 100	100 pk	2	
AMP	9A2258	70-1000-A1799	EYELET, NON-INSULATED, RING TONGUE, #6 WIRE, 5/16" STUD, 33466	1 ea	16	
AMP	9A2261	70-1000-A1795	EYELET, INSULATED, RING TONGUE, #6-#8 WIRE, 1/4" STUD, 52042-3	1 ea	26	
AMP	9A2243	70-1000-A1791	EYELET, INSULATED, RING TONGUE, #10-#12 WIRE, 1/4" STUD, 35110	1 ea	120	
AMP	9A2242	70-1000-A1794	EYELET, INSULATED, RING TONGUE, #14-#16 WIRE, 1/4" STUD, 327743	1 ea	50	
L&W	9A2231	70-1000-A1830	TERMINAL BLOCK, AAR, 1" CENTERS, 2X6, WITH NUT AND WASHER ONLY	1 ea	3	
L&W	9A2233	70-1000-A1832	TERMINAL BLOCK, AAR, 2-3/8" CENTERS, 1X2, WITH NUT AND WASHER ONLY	1 ea	6	
L&W	9A2230	70-1000-A1826	TERMINAL BLOCK, AAR, 1" CENTERS, 1X12, WITH FLAT NUT AND WASHER ONLY	1 ea	1	
ERICO	SBB2700A2B10	70-1000-A1866	ARRESTOR, BASE, 4 POST, PKG OF 20 ONLY	1 ea	6	
L&W	9A2200	70-1000-A1803	CONNECTOR, FLAT STRAP, 1" CENTER, 2 HOLE	1 ea	20	
L&W	9A2201	70-1000-A1810	CONNECTOR, FLAT STRAP, 2-3/8" CENTER, 2 HOLE	1 ea	5	
L&W	9A2205-7	70-1000-A1833	CONNECTOR, TEST LINK, OFFSET, 1"	1 ea	4	
L&W	9A2205	70-1000-A1835	CONNECTOR, TEST LINK, STRAIGHT, 1"	1 ea	18	
L&W	9A2211	70-1000-A1836	CONNECTOR, TEST LINK, STRAIGHT, 2-3/8"	1 ea	4	
L&W	9A2204	70-1000-A1813	NUT, AAR, BINDING, BRASS, #14-24	1 ea	100	

Vendor	Vendor Part Number	RJC Part Number	Description	UOM	Order Qty	NOTES
L&W	9A2202	70-1000-A1814	NUT, AAR, CLAMP, #14-24 HEX	1 ea	100	
L&W	9A2203	70-1000-A1816	WASHER, AAR, BEVELED, FLAT, 1/4" STUD	1 ea	200	
ALSTOM	033004-000	70-1000-A1493	NUT, AAR, INSULATED	1 ea	10	
FIELD MATERIAL - CABLE						
OKONITE	150-12-3933	70-1000-A1756	CABLE, TRACK, DUPLEX, BLACK/RED, #6, 2 CONDUCTOR, OKONITE	1 ft	300	
OKONITE	206-11-6245	70-1000-A1750	CABLE, SIGNAL, SOLID, BLACK, #6, 5 CONDUCTOR, OKONITE	1 ft	300	
OKONITE	206-11-6887	70-1000-A1747	CABLE, SIGNAL, SOLID, BLACK, #14, 7 CONDUCTOR, OKONITE	1 ft	300	
OKONITE	206-11-6070	70-1000-A2868	CABLE, SIGNAL, SOLID, BLACK, #6, 3 CONDUCTOR W/ #8 GROUND	1 ft	300	
ERICO	A809A04F100	70-1000-A1893	WIRE, BARE, SOLID, #6, 100 FT	1 ft	40	
ERICO	SBS8CINSUL	70-1000-A1886	WIRE, BONDSTRAND, INSULATED 0.063", BLACK, 100 FT	1 ft	600	
GRAYBAR	PVC-80-4	70-1000-A1999	CONDUIT, PVC, SCH80, 4"	1 ft	60	
FIELD MATERIAL - SIGNALS/GATE						
WESTERN CULLEN HAYES	M-10-RJC-24-2-BL	70-1000-A2633	GATE MECHANISM, 3593-E-131, 19' - 24' GATE W/ LED LIGHTS, 5" BASE & MAST, 2-WAY LED, COUNTERWEIGHT, X-BUCK SIGN, CONVERSION BRACKET, HIGH WIND BRACKET, ELECTRONIC BELL	1 ea	2	
WESTERN CULLEN HAYES	38-0045-287	70-1000-A2440	GATE MECHANISM, HEATER ASSY, 115 VAC, 50 WATT, 500 OHM	1 ea	2	
PROGRESS	9463000102	70-1000-A2179	PINNACLE, ALUMINUM, 5 IN	1 ea	1	
RJC	RJC-ENS-1	70-1000-A2000	SIGNS, CROSSING, EMERGENCY NOTIFICATION, 9"x12", HI-INTENSITY	1 ea	2	
TRS	TRS6040S4-5	70-1000-A2220	SIGNS, BRACKET, CLAMP, ENS, 4 IN & 5 IN	1 ea	2	
DIXIE PRECAST	DPS-2A - 5'-7"	70-1000-A2006	FOUNDATION, PRECAST, GATES, 11-11/16" BOLT SPACING, 5'-7" HEIGHT	1 ea	2	
GENERAL SIGNALS, INC.	SK-1000-B	70-1000-A2273	GATE MECHANISM, GATE KEEPER, 2-WAY, SK-1000-B	1 ea	2	
ALSTOM	033004-000	70-1000-A1493	NUT, AAR, INSULATED	1 ea	8	
L&W	9A2205-7	70-1000-A1833	CONNECTOR, TEST LINK, OFFSET, 1"	1 ea	24	
FIELD MATERIAL - MISC						
ERICO	615880	70-1000-A1860	GROUNDING, ROD, 5/8" X 8'	1 ea	4	
ERICO	A248B	70-1000-A1879	GROUNDING, CLIP, RAIL BOND,(1) 3/8 PERPENDICULAR, BOX 50	1 ea	8	
ERICO	SBNT1161G	70-1000-A1875	GROUNDING, CONNECTOR, ONE SHOT,CABLE TO GRD ROD,HORZ TEE W/CABLETAP	1 ea	4	
ERICO	SBTBBU4A	70-1000-A1868	GROUNDING, BOOTLEG, W/COUPLER, BOX 100	1 ea	400	
L&W	ZB1772	70-1000-A1844	DUCT SEAL, 5LB BAG	1 ea	2	
L&W	NA1658-0	70-1000-A1846	GREASE, NO-OXIDE, 14 OZ CAN	1 ea	1	
SIEMENS	998031-T06938	70-1000-A1726	HOSE, RUBBER, 3/4"	1 ft	40	
L&W	BA2363J	70-1000-A1847	GROUNDING, SLEEVE, REDUCING, 3/16", #6, TINNED	1 ea	8	
HAGEMEYER	561185	70-1000-A1854	TAPE, SCOTCH® SUPER 33+ VINYL ELECTRICAL, 3/4x66FT	1 ea	1	
HAGEMEYER	974102	70-1000-A1855	TAPE, SCOTCH® LINERLESS RUBBER SPLICING, 3/4x30FT	1 ea	1	
L&W	ZB1772	70-1000-A1844	DUCT SEAL, 5LB BAG	1 ea	2	
McMASTER-CARR	7130k41	70-1000-A1900	CABLE TIE, NYLON, 6" L, 1-1/2" BUNDLE DIA., PKG 100	100 pk	1	
SIEMENS	030399-16X	70-1000-A1739	PADLOCK, HEXAGON	1 ea	5	
ERICO	SB20136	70-1000-A1867	GROUNDING, BOND, HEAD, 3/16"X7-1/2" TAB, BOX 100	1 ea	200	
OTHER MATERIAL						

Vendor	Vendor Part Number	RJC Part Number	Description	UOM	Order Qty	NOTES
HUBBELL	L1420PZ	A	PLUG, TWIST LOCK, 20A	1 ea	3	
GRAYBAR		B	DOOR GROUND STRAP	1 ea	2	
RJC		C	CONTAINER	1 ea	1	
ALLIED	70098727	D	THERMOSTAT, SELCO OA-50, 1/2" DISC, AUTO REST, OPEN ON RISE 50F, CLOSE AT 32F	1 ea	2	
		E		1 ea		
		F		1 ea		
		G		1 ea		
		H		1 ea		
		I		1 ea		
		J		1 ea		
		K		1 ea		
		L		1 ea		
		M		1 ea		
		O		1 ea		
		P		1 ft		
		Q		1 ft		
		R		1 ft		
		S		1 ft		
		T		1 ea		
		U		1 ea		
		V		1 ea		
		W		1 ea		



OHIO RAIL DEVELOPMENT COMMISSION

Mail Stop #3140, 1980 West Broad Street, Columbus OH 43223

John R. Kasich, Governor • Mark Policinski, ORDC Chairman

October 15, 2018

Deborah J. Hawley
Real Estate & Funded Projects Manager
R.J. Corman Railroad Group
P.O. Box 788
Nicholasville, KY 40340

RE: Tuscarawas County, TR 424/MT Pleasant Road, DOT#142594T, PID#108518
Grade Crossing Warning Device Improvement

Dear Ms. Hawley:

A diagnostic review was held at the above grade crossing on May 17, 2018. The crossing has been recommended for the installation of flashing lights and roadway gates.

RJ Corman Railroad Group (RJC) is authorized to proceed with the site plans and cost estimates or bid package for this project. This authorization is made with the stipulation and understanding that any field work needs prior approval before work begins. This authorization is made with the stipulation and understanding that an approved estimate may contain entries for items or activities that may be cited and found to be ineligible for federal participation during the project audit. Please note that the railroad must provide ORDC with a plan stamped by a professional engineer licensed in the State of Ohio prior to acceptance and close out of the project.

The diagnostic review form is attached. Please note any recommendations (page 5), if any, made by the team with regard to requirements for this location. Any minor roadway work necessary for MUTCD compliance should be incorporated into the PE and such costs will flow through the railroad reimbursement process.

The Project Manager for this project is James Tucker. James can be reached at (614) 398-6897, or james.tucker@dot.ohio.gov, if you have any questions.

Sincerely,

Project Manager

C: Randall Schumacher, Chief, Rail Division, PUCO
Jill Henry, Rail Specialist, PUCO
Heather Hamilton, ORDC



www.rail.ohio.gov

phone: 614.644.0306

IMPROVING RAIL TODAY FOR TOMORROW'S ECONOMY

ORDC (file)

Attachment: 1 (diagnostic review form)



OHIO RAIL DEVELOPMENT COMMISSION

Mail Stop #3140, 1980 West Broad Street, Columbus OH 43223

John R. Kasich, Governor • Mark Policinski, ORDC Chairman

August 27, 2018

Deborah J. Hawley
Real Estate & Funded Projects Manager
R.J. Corman Railroad Group
P.O. Box 788
Nicholasville, KY 40340

Re: Grade Crossing Warning Device Improvements
Tuscarawas County, TR 424/MT Pleasant Road, DOT # 142594T, PID # 108518

Dear Ms. Hawley:

A diagnostic review was conducted at the subject grade crossing on 5/17/2018. As a result of the review, the devices will be upgraded to automatic flashing lights and roadway gates.

This project shall be completed in compliance with Agreements No. 004-A, dated May 29, 1991, entered into by the State of Ohio and R.J. Corman Railroad Group (RJC) and incorporated as if fully rewritten herein. This construction shall also meet the general terms and conditions under the Fixing America's Surface Transportation Act and subsequent amendments and the State of Ohio's Federally Funded Warning Device Program.

Preliminary engineering (PE) and construction costs shall be borne one hundred percent (100%) by ORDC. Reimbursable costs will be limited by the ORDC based on approved estimates and bid tabulations, if applicable. These limits will be quantified by the ORDC in its construction authorization to RJC and may be amended by the ORDC based on revised estimates and bid tabulations.

This Letter Agreement and the approved plans constitute the scope of the project. RJC shall notify ORDC in writing of any changes in the scope of work which are not in the approved plans and estimates and secure approval in writing of same before the work is performed.

PE will not be commenced by RJC prior to ORDC issuing a PE authorization. PE will be submitted by RJC to ORDC within ninety (90) days or other time specified by ORDC in the PE authorization. Construction will not be commenced by RJC prior to ORDC issuing a construction authorization. Construction will be completed by RJC within nine (9) months or other time specified in the time specified by ORDC in the construction authorization.

Please indicate your acceptance of the terms and conditions of this Letter Agreement by signing and returning one (1) copy to me at the address listed above and retain a copy for your files. This Agreement may be executed in one or more counterparts, each of which shall be deemed to be a duplicate original, but all of which taken together shall be deemed to constitute a single Agreement.



www.rail.ohio.gov

phone: 614.644.0306

IMPROVING RAIL TODAY FOR TOMORROW'S ECONOMY

Sincerely,



Matthew Dietrich
Executive Director

R.J Corman Railroad Group:

By: Leborah J Hawley

Title: Director - Real Estate & Contracts

Date: 9/12/18

TUS TR 424 MT Pleasant Rd RJC PID 108518 142594T



Diagnostic Review Team Survey

Reason for Survey:
(e.g. formula, accident, constituent, etc.)

Constituent

Date: 5/17/2018

Location Data

Street or Road Name: Mt. Pleasant Road			
Route/Road Number (i.e. Twp., Co., SR or US) TR 424		US DOT No.: 142594T	
County: TUS	Township: Dover	City: (In or Near) Near Strasburg	
Railroad Name: RJ Corman	Railroad Division: AK	Branch/Line Name:	
Nearest RR Timetable Station: Dover		RR Milepost: 77.4	

On-Site Review Team

(Include: Name – Organization – Phone Number – Email)

1. James Tucker 614-398-6897 ORDC James.tucker@dot.ohio.gov
2. SHAWN ZURFKA 614 466-1150 PUCO SHAWN.ZURFKA@PUC.STATE.OH.US
3. Guy Dennings 859-221-2634 RSC guy.dennings@rjcorman.com
4. John Miceli Dover Twp 330 204 3070 Johnmiceli@msn.com
5. John Fowdriest Dover Twp 330 204 0874 JFservicesjohn@gmail.com
6. Doug Kendic Dover Twp P 370-827-7749
7. _____
8. _____
9. _____

Existing Traffic Control Devices

Type of Warning Devices	Installed?		Quantity/Comments	
Advance Warning Signs (condition?)	<input checked="" type="checkbox"/> Yes	<input type="checkbox"/> No	2	1 = poor condition
'Stop' Signs	<input checked="" type="checkbox"/> Yes	<input type="checkbox"/> No		
'Stop Ahead' Signs	<input type="checkbox"/> Yes	<input checked="" type="checkbox"/> No		
Pavement Markings (condition?)	<input type="checkbox"/> Yes	<input checked="" type="checkbox"/> No		
Crossbucks	<input checked="" type="checkbox"/> Yes	<input type="checkbox"/> No	2	
Number of Tracks Signs	<input type="checkbox"/> Yes	<input checked="" type="checkbox"/> No		
Inventory Tags	<input checked="" type="checkbox"/> Yes	<input type="checkbox"/> No	2	
Interconnected Highway Traffic Signal	<input type="checkbox"/> Yes	<input checked="" type="checkbox"/> No		
Mast-Mounted Flashing Lights	<input type="checkbox"/> Yes	<input checked="" type="checkbox"/> No		
Cantilever Flashing Lights	<input type="checkbox"/> Yes	<input checked="" type="checkbox"/> No	Number:	Length:
Side Lights	<input type="checkbox"/> Yes	<input checked="" type="checkbox"/> No		
Automatic Gates	<input type="checkbox"/> Yes	<input checked="" type="checkbox"/> No	Number:	Length:
Bells	<input type="checkbox"/> Yes	<input checked="" type="checkbox"/> No	Number:	
Sidewalk Gate Arms	<input type="checkbox"/> Yes	<input checked="" type="checkbox"/> No		
'No Turn' Signs	<input type="checkbox"/> Yes	<input checked="" type="checkbox"/> No		
Illumination	<input type="checkbox"/> Yes	<input checked="" type="checkbox"/> No		
Is crossing flagged by train crew?	<input type="checkbox"/> Yes	<input checked="" type="checkbox"/> No		
Other	<input type="checkbox"/> Yes	<input type="checkbox"/> No		

Safety Data (Obtain crash reports, if possible, prior to review)		
	Initial Information (from database)	Revised
Number & dates of crashes in previous 5 years	0	
Hazard Ranking	1658	Date Run: 3/31/2018
Railroad Data		
Railroad Characteristics	Initial Information (from database)	Revised
Total trains per day	4	
< 1 per day		
Day thru trains	#	2
Night thru trains		2
Daytime switching movements		
Nighttime switching movements		
Total number of tracks	1	
Number of main tracks	1	
Number of other tracks		
Maximum train speed	25	
Typical train speed	25	
Amtrak		
If non-gated crossing, is clearing sight distance adequate in all quadrants? (See Table 1) <input checked="" type="checkbox"/> Yes <input type="checkbox"/> No		
If multiple tracks, can two trains occupy crossing at the same time? <input type="checkbox"/> Yes <input checked="" type="checkbox"/> No		
Can one train block the motorists' view of another train at crossing? <input type="checkbox"/> Yes (Explain below) <input checked="" type="checkbox"/> No		
Can one or more tracks be eliminated through the crossing? <input type="checkbox"/> Yes <input checked="" type="checkbox"/> No		
Are there other track(s) crossing this same roadway within 100 ft of this crossing? <input type="checkbox"/> Yes <input checked="" type="checkbox"/> No		
If yes, Crossing DOT #(if different) _____		
If yes, distance _____ (take measurement between track centerlines at closest point along roadway)		
Roadway Data		
Local Highway Authority:		Dover Township
Roadway Characteristics	Initial Information (from database)	Revised
Average daily traffic	473 (2010)	596 (2018)
Highway paved	<input checked="" type="checkbox"/> Yes <input type="checkbox"/> No	<input type="checkbox"/> Yes <input type="checkbox"/> No
Roadway Surface: <input checked="" type="checkbox"/> Blacktop <input type="checkbox"/> Gravel <input type="checkbox"/> Concrete <input type="checkbox"/> Other _____		
Roadway width: <u>24</u> ft.		
Number of highway lanes	2	
Urban or Rural	Urban	
Vehicle Speed: <u>55</u> MPH		
School Bus Operation: <input type="checkbox"/> No <input checked="" type="checkbox"/> Yes <u>4</u> Amount		8
Hazardous Materials Trucks: <input type="checkbox"/> No <input checked="" type="checkbox"/> Yes <u>.03</u> Amount		
Shoulders: <input checked="" type="checkbox"/> No <input type="checkbox"/> Yes		
Is the shoulder surfaced? <input checked="" type="checkbox"/> No <input type="checkbox"/> Yes		
Is there existing guardrail along roadway in crossing vicinity? <input checked="" type="checkbox"/> No <input type="checkbox"/> Yes		
Is stopping site distance adequate? (See Table 2) <input type="checkbox"/> Yes <input checked="" type="checkbox"/> No If no, deficient approach(es) <u>SW Quad</u>		

Quadrant _____ Curb and Gutter: <input type="checkbox"/> Functional (Curb height = 4" or more) <input type="checkbox"/> Non-functional (Curb height = Less than 4") <input checked="" type="checkbox"/> None	Quadrant _____ Curb and Gutter: <input type="checkbox"/> Functional (Curb height = 4" or more) <input type="checkbox"/> Non-functional (Curb height = Less than 4") <input checked="" type="checkbox"/> None
---	---

Pedestrians: ☐ No ☒ Yes

Is sidewalk present? ☒ No ☐ Yes

Is there a nearby intersection that could cause queuing over the crossing? ☒ No ☐ Yes

If yes,
Distance _____

Is this intersection signalized? ☒ No ☐ Yes

Are the signals currently interconnected with the existing crossing warning devices? ☒ No ☐ Yes

Is there a 'Do not Stop on Track' sign? ☒ No ☐ Yes

Is a roadway improvement project (e.g. widening, turn lanes, nearby new or upgraded traffic signal, sidewalk) planned at or near this location in the foreseeable future? ☒ No ☐ Yes

If yes,
Improvement type _____ Lead Agency _____ Timeline/completion - _____

Is it the consensus of the Diagnostic Review Team that this is a potential closure project? ☒ No ☐ Yes

Explain reasons: _____

Potential Red Flags / Project Challenges

Traffic Signal Preemption (include traffic signal intersection name and LHA with jurisdiction over traffic signal, if known):

N/A

Crossing Consolidation or Closure:

N/A

Real Estate or ROW:

N/A

Culverts / Drainage / Ballast Conditions:

N/A

Roadway and/or Sidewalks:

N/A

Circuitry (e.g. reaches out to other crossings, specific needs, etc.):

N/A

Environmental:

N/A

Other:

Diagnostic Team Recommendations

	Quadrants Needed
<input checked="" type="checkbox"/> Install/upgrade active devices	
<input type="checkbox"/> Automatic Flashing Lights (AFLS)	
<input type="checkbox"/> AFLS / Cants	
<input checked="" type="checkbox"/> AFLS / Gates	SW + NE
<input type="checkbox"/> AFLS / Gates / Cants	
<input checked="" type="checkbox"/> Bells / number	1 Bell
<input type="checkbox"/> Upgrade circuitry / type	
<input type="checkbox"/> Sidelights	
<input type="checkbox"/> Guardrail Needed	
<input checked="" type="checkbox"/> Install/Replace curb	Both Quads for 4'3" placement
<input checked="" type="checkbox"/> Bungalow placement & offset from rail & highway	SE Quad if possible
<input type="checkbox"/> Other (define)	

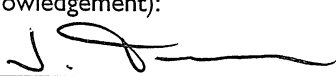

Comments:


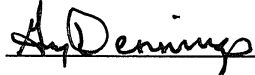
☐ Install/upgrade traffic signal preemption

☐ No improvements needed

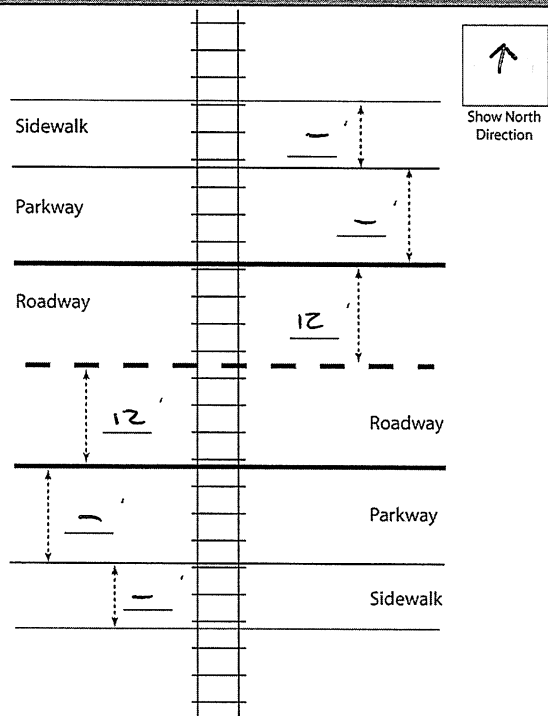
☐ Other (define)

Acknowledgement of Recommendations (each entity represented at the diagnostic must have at least one signature acknowledgement):

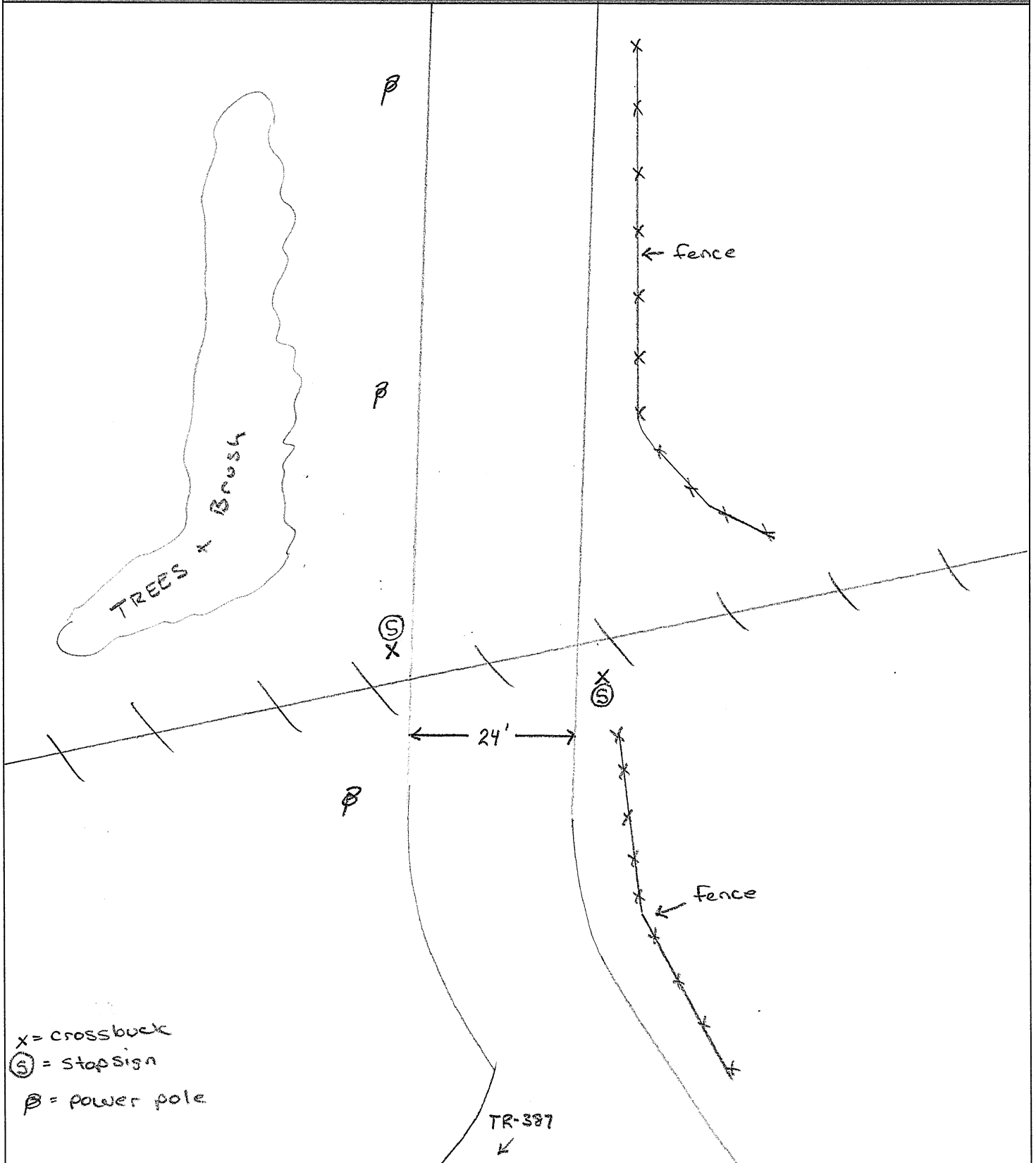



Field Dimensions



Field Sketch



Crossing Angle ☐ 0-29° ☐ 30-59° ☒ 60-90° Measured in _____ Quadrant?

Sketch by: DT

Table 1

Clearing Sight Distances

Maximum Authorized Train Speed	Distance (dT) Along Railroad from Crossing (ft)
1 - 10	240
15	360
20	480
25	600
30	720
35	840
40	960
45	1080
50	1200
55	1320
60	1440
65	1560
70	1680
75	1800
80	1920
85	2040
90	2160

Source: R-H Grade Crossing Handbook Table 36 (pp. 132-133)

Notes:

All calculated distances are rounded up to the next higher 5-foot increment.

Distances indicated are for 65-ft double bottom semi-tractor trailers and level single track 90 degree crossings; and may need to be adjusted for multiple tracks, skewed crossings or approaches on grades.

Clearing Sight Distance is to be measured in each vehicle travel direction at non-gated crossings as viewed from a point 25 feet from centerline of nearest track in the center of whichever travel lane is nearest the direction along track being measured.

Table 2

Stopping Sight Distances

Highway Vehicle Speed	Distance (dH) Along Roadway from Crossing (ft)
0	n/a
5	50
10	70
15	105
20	135
25	180
30	225
35	280
40	340
45	410
50	490
55	570
60	660
65	760
70	865

Source: R-H Grade Crossing Handbook Table 36 (pp. 132-133)

Notes:

All calculated distances are rounded up to the next higher 5-foot increment.

Distances indicated are for 65-ft double bottom semi-tractor trailers on dry level pavements.

Stopping Sight Distance is to be measured on each roadway approach to crossing from stop bar.

This foregoing document was electronically filed with the Public Utilities

Commission of Ohio Docketing Information System on

3/7/2019 11:36:58 AM

in

Case No(s). 19-0581-RR-FED

Summary: Application In the Matter of a Request for the Installation of Active Warning Devices at the RJ Corman Railroad Crossing, Mt. Pleasant Road/TR 424 DOT#142-594T in Tuscarawas County, Ohio. electronically filed by Mrs. Jill A Henry on behalf of PUCO/Rail Division