

Memo

To: Docketing Division
From: Jill Henry, Rail Specialist, Rail Division
Cc: PUCO Legal Department
Date: 3/6/2019

Re: PUCO Case No. 19-582-RR-FED- In the Matter of a Request for Upgrades to the Active Warning Devices at the Norfolk Southern Railway Crossing, Silver Street DOT#481-538V, in Marion County, Ohio.

On August 24, 2016, the Ohio Rail Development Commission (ORDC) authorized funding for Norfolk Southern Railway to install upgraded LED Lights and curbing for regulatory compliance at Silver Street DOT#481-538V, in Marion County, Ohio. The crossing was surveyed, on April 8, 2016, and found to warrant the upgrades. The electric utility provider for this crossing is First Energy Corp.-Ohio Edison.

The project will be paid for with federal funds and is actual cost. The plans and estimates in the amount of \$64,895.00 have been approved. Construction may commence at once. **Staff requests a Finding & Order with completion of the project in nine months.** Staff requests that the following language be incorporated in the Finding & Order:

It is expected that all work necessary for FHWA acceptance of the warning devices will be completed by the in-service due date and that the railroad will be responsible for this work. This work includes, but is not limited to:

- Any ancillary work to make the warning devices function as designed and visible to the roadway user, and
- MUTCD compliance, including minor roadway work if necessary.

Please serve the following parties of record:

Norfolk Southern Railway Company
Kurt Young
Public Projects Engineer
1200 Peachtree Street NE
Box 123
Atlanta, GA 30309-3597

Norfolk Southern Railway Company
Cayela Wimberly
Director Grade Crossing Safety
1200 Peachtree Street NE
Atlanta, GA 30309-3597

Eastman & Smith LTD.
Casey Talbott
Attorney for Norfolk Southern
One SeaGate 24th Floor
P.O. Box 10032
Toledo, OH 43699-0032

Ohio Rail Development Commission
Cathy Stout
Safety Manager
1980 West Broad Street
Mail Stop #3140
Columbus, OH 43223

City of Marion
Jim Bischoff
City Engineer
233 West Center Street
Marion, Ohio 43302

First Energy Corp.-Ohio Edison

**OHIO RAIL DEVELOPMENT COMMISSION
INTER-OFFICE COMMUNICATION**

TO: Randall Schumacher, Supervisor, Rail Division, PUCO

FROM: Cathy Stout, Manager, Safety Section, ORDC

BY: Greg Gronbach, Project Manager, Safety Section, ORDC

SUBJECT: Marion County, Silver St, DOT# 481538V, PID# 103769 NS Project 10.3133

DATE: February 19, 2019

The Ohio Rail Development Commission (ORDC) established a diagnostic survey at the subject location on April 8, 2016. The Public Utilities Commission of Ohio (PUCO) attended the review. The Diagnostic Team recommended the improvement of L.E.D upgrade and curb installation. Copies of the diagnostic review form and the plan and estimate are attached.

PE has already been provided by the railroad. ORDC approves the site plans and estimates as provided. Please issue a construction-only order for the project outlined above. This authorization is made with the stipulation and understanding that an approved estimate may contain entries for items or activities that may be cited and found to be ineligible for federal participation during the project audit.

It is expected that all work necessary for FHWA acceptance of the warning devices will be completed by the in-service due date and that the railroad will be responsible for this work. This work includes, but is not limited to:

- any ancillary work to make warning devices function as designed and visible to the roadway user, and
- MUTCD compliance – including minor roadway work if necessary.

Thank you for your assistance with these matters.


Greg Gronbach
Project Manager

Attachment: Diagnostic Review
Plan & Estimate

c: Jill Henry, PUCO
Cathy Stout, ORDC
Heather Hamilton, ORDC
ORDC Project Manager (file)



OHIO RAIL DEVELOPMENT COMMISSION

Mail Stop #3140, 1980 West Broad Street, Columbus OH 43223

Mike DeWine, Governor • Mark Policinski, ORDC Chairman

February 19, 2019

Mr. Kurt Young
Public Projects Engineer
Norfolk Southern Railway Company
1200 Peach Street NE, Box 123
Atlanta, Ga. 30309

RE: Construction Authorization
Marion County, Silver St, DOT# 481538V, PID# 103769 NS Project 10.3133

Dear Mr. Young:

The plan dated December 5, 2016 and estimate dated February 15, 2019 for the referenced project has been reviewed and is acceptable. Norfolk Southern Railway Company may proceed with the L.E.D upgrade and curb installation in accordance with the abbreviated plan. This authorization is made with the stipulation and understanding that the approved estimate may contain entries for items or activities that may be cited and found to be ineligible for federal participation during the project audit. Reimbursement of eligible actual cost is limited to \$64,895.00. Additional costs must be approved in writing by the Ohio Rail Development Commission (ORDC) prior to being incurred. Emergency verbal authorizations by ORDC may be permitted and will be confirmed by ORDC in writing within ten (10) business days of the verbal approval.

This authorization is contingent upon Norfolk Southern Railway Company accepting the following instructions:

1. Norfolk Southern Railway Company's project foreman will furnish written notification five (5) working days prior to the date work will start at the project site to Greg Gronbach, ORDC, email Gregory.Gronbach@dot.ohio.gov, and to the Public Utilities Commission of Ohio at Jill.Henry@puc.state.oh.us. Norfolk Southern Railway Company's project foreman will also notify the same of any stops and re-starts of the work activity and of the date work was completed for the project.
2. Norfolk Southern Railway Company will arrange for utilities to be located at the project site by the Ohio Utilities Protection Service (OUPS) prior to any construction activities at the site. Utilities that are not participating members of the service must be contacted directly by Norfolk Southern Railway Company.
3. Norfolk Southern Railway Company's project foremen will notify Greg Gronbach at 614-745-6760 (telephone) or Gregory.Gronbach@dot.ohio.gov (email) of any changes in the scope of work, cost overruns, material changes, etc. which are not included in the approved plan and estimate and secure approval of same before the work is performed.



www.rail.ohio.gov

phone: 614.644.0306

IMPROVING RAIL TODAY FOR TOMORROW'S ECONOMY

4. Open cut of roadways is *not permitted* except in unusual circumstances and must be coordinated with the local highway authority and preapproved by ORDC.
5. Norfolk Southern Railway Company will furnish two (2) copies of each partial bill to ORDC. Please find the enclosed ODOT Purchase Order to reference when billing.
6. Norfolk Southern Railway Company will furnish two (2) copies of the final all-inclusive bill to ORDC stating the exact dates of starting and completing work, the initial and final dates of construction and location where the accounts may be audited.
7. This installation will include any ancillary work to make the warning devices function as designed and meet MUTCD.

This project is authorized for construction under the master agreement between Ohio Rail Development Commission, Public Utilities Commission of Ohio and Norfolk Southern executed on December 19, 2012.

Thank you for your assistance with these matters.

Sincerely,


Greg Gronbach
Project Manager

C: Randall Schumacher, Rail Division Supervisor, PUCO
Jill Henry, Rail Specialist, PUCO
Cathy Stout, ORDC
Heather Hamilton, ORDC
ORDC (file)



15-Feb-19

Detailed Estimate for Grade Crossing Warning Devices

City/State: MARION, OH
MilePost: S-45.39
State Proj. No.:
S&E Proj. No.: 10.3133
Man Days: 24

Road: SILVER ST
DOT/AAR: 481538V
County: MARION
File Number:

Purchases - Others		
Meals and Lodging:	\$3,415.39	
Rental of Equipment:	\$4,668.83	
(2 Trucks, 1 Backhoe w/ Trailer and 1 Pipe-Pusher for 4 Days)		
Construction Supervision Vehicle:	\$714.17	
Purchases - Other Total:		\$8,798.39
Material And Additives		
Material Cost:	\$29,579.00	
Sales and Use Tax:	\$2,366.00	
Material Handling Freight:	\$2,957.90	
Material Total:		\$34,902.90
Labor And Additives		
Labor Cost:	\$8,040.00	
(6 man crew at \$2,010.00 a day for: 4 days)		
Payroll Tax & Overheads:	\$6,854.90	
Preliminary Engineering:	\$3,949.99	
Construction Supervision:	\$2,348.48	
Labor Total:		\$21,193.37
Project Cost:		\$64,894.66
Scrap / Salvage Credit:		\$0.00
Project Total:		\$64,895.00

Estimated on: 15-Feb-19

Estimated by: ndr3j

Estimate valid for 1 year from date of estimate



Norfolk Southern Railway
Highway Crossing Signalization Program - Material List



Do not substitute items without permission from S & E Engineering

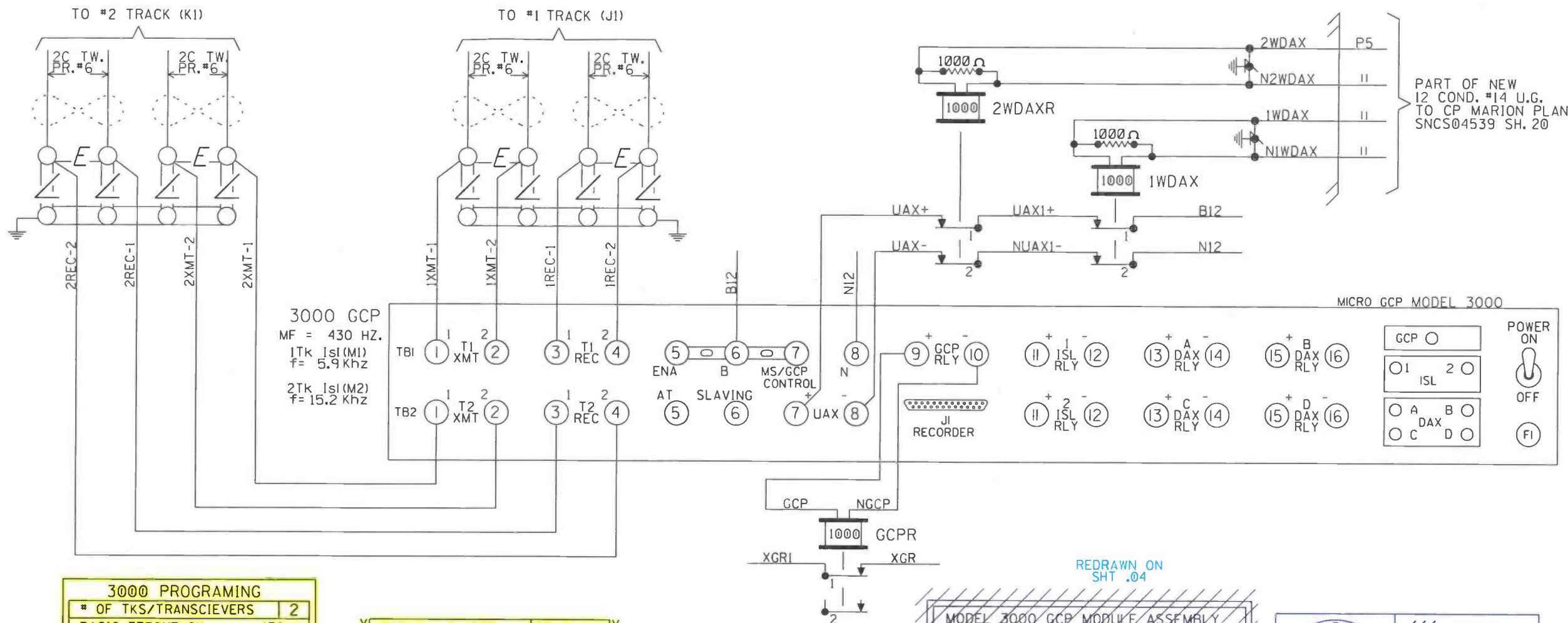
City:	MARION
Road:	SILVER ST
Mile Post:	S-45.39
Drawing Number:	SNCS04539
State ProjectNumber:	
County:	MARION
A A R Number:	481538V
Project Number:	10.3133
File Number:	
New File Number:	CX1112397
WBS:	F-03699
Store Number:	S803
Supervisor:	A.R. ETHERTON
Tax Code:	3500
Vendor to supply the following copies after pricing:	
1 Set - Material Management with original Invoice	
2 Sets - with plans shipped in car with material	
1 Set - S&E Gen. Supt. Construction w/copy of invoice	

Location: MARION			OH	S&E Proj. No.: 10.3133	AFE No.: F-03699	Drawing No.: SNCS04539	Vendor: Interrail Engineering, INC		
Store No.: S803			P.O.Number:		Date Required:	Date Shipped:			
Qty.	Class-Item-CD	UI	Price per Item	Total Price	Item Description	Quantity Shipped	Quantity Installed Date Quan.	Quantity Returned (Credit)	Special Instructions
1	000-000001-4	EA	\$20,000.00	\$20,000.00	CURBING/SIDEWALK WORK, INSTALL/REPLACE				
1	670-005377-4	EA	\$338.00	\$338.00	GATE ARM, ALUMINUM, 17-24 FT, ARM ASSEMBLY, INCLUDES GATE GUARD FOR GATE LIGHT CABLE. HIGH INTENSITY VERTICAL STRIPES.				
1	670-005378-4	EA	\$387.95	\$387.95	GATE ARM, ALUMINUM, 25-31 FT, ARM ASSEMBLY, INCLUDES GATE GUARD FOR GATE LIGHT CABLE. HIGH INTENSITY VERTICAL STRIPES.				
2	670-005376-4	EA	\$83.25	\$166.50	GATE ARM, FIBERGLASS-ALUMINUM, 7 FT, SIDEWALK, ORDER LED LIGHT KIT SEP., HIGH INTENSITY VERTICAL STRIPES.				
4	670-092155-4	EA	\$160.00	\$640.00	LAMP ASSY, LED GATE ARM KIT (INCLUDES 3 LAMPS COMPLETE WITH CABLES AND MTG. HARDWARE) REC #: 9298-1120				
2	670-005058-4	EA	\$1,786.08	\$3,572.16	LAMP ASSY, LED, 5" MAST BACK TO BACK LIGHTS (IPN: 042003-L487XNS)				
2	670-700469-4	EA	\$1,134.36	\$2,268.72	MODULE, MULTI FREQUENCY ISLAND SAFETRAN #80211 FOR 3000GCP				
1	670-014225-4	EA	\$1,535.67	\$1,535.67	MODULE, PROCESSOR FOR 3000 GCP SAFETRAN #80214				
4	670-001347-4	EA	\$57.10	\$228.40	PACKAGE, HARDWARE SIGN 5 IN. MOUNTING, SERRMI A1250-5, HARMON @200965-000, OR				
2	670-899577-4	EA	\$71.11	\$142.22	SIGN, 3 TRACK SIGN, HIGH INTENSITY, SAFETRAN #035207-3HX				
2	670-016346-4	EA	\$149.68	\$299.36	SIGN, X-BUCK, HI-INTENSIVE REFLECTIVE FRT. & BACK FOR ALL STATES, SAFETRAN# 035200-91X				

Total Material: \$29,578.98

APPROVED BY STATE	APPROVED BY RAILROAD	CAR NUMBER	SEAL NUMBER
-------------------	----------------------	------------	-------------

[illegible]

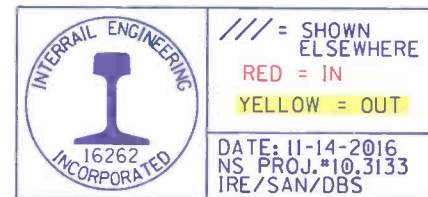


3000 PROGRAMMING	
* OF TKS/TRANSCEIVERS	2
BASIC FREQUENCY	430Hz
T1 UNI/-DIRECTIONAL	B1
T2 UNI/-DIRECTIONAL	B1
T1 POWER-HI/MED/LOW	MAX
T2 POWER-HI/MED/LOW	MAX
T1 PRED/MS	GCP
T2 PRED/MS	GCP
T1 WARNING TIME	35 Sec
T2 WARNING TIME	35 Sec
T1 APPROACH DIST	1340 Ft
T2 APPROACH DIST	1340 Ft
UAX PU DELAY(0-OFF)	25 Sec
* OF DAX'S	0 Sec
T1 ISL DIST	165 Ft
T2 ISL DIST	165 Ft

DAX A = T1/T2?	TRACK=
DAX A DIST	Ft
DAX A WARN TIME	Sec
DAX B = T1/T2?	TRACK=
DAX B DIST	Ft
DAX B WARN TIME	Sec
DAX C = T1/T2?	TRACK=
DAX C DIST	Ft
DAX C WARN TIME	Sec
DAX D = T1/T2?	TRACK=
DAX D DIST	Ft
DAX D WARN TIME	Sec
MASTER?/SLAVE?	MASTER
PASSWORD NO/YES	NO
RECORDER NO/YES	NO

T1-SW TO MS AT 10 % OF EZ	
T2-SW TO MS AT 10 % OF EZ	
T1-DELAY MS TO GCP	0 Sec
T2-DELAY MS TO GCP	0 Sec
T1 PRIME PRE. OFFSET	Ft
T2 PRIME PRE. OFFSET	Ft
PRIME PU TIME DELAY	16 Sec
DAX A PU DELAY	Sec
DAX B PU DELAY	Sec
DAX C PU DELAY	Sec
DAX D PU DELAY	Sec

MODEL 3000 GCP MODULE ASSEMBLY										
MODULE POSITION	M1	M2	M3	M4	M5	M6	M7	M8	M9	M10
MODULE NUMBERS	80011-f (1)	80011-f (2)	80012 T/R(1)	80012 T/R(2)	80013 R DRY	80014 PROCS	80015 LOGS	80016 MDAX	80016 L2DAX	80020 W/19
MODULES USED	x	x	x	x	x	x	x	x	x	x



DESIGNED BY: PBP 09-10-92	NS NORFOLK SOUTHERN	
DRAWN BY: MSS 01-03-95	OFFICE OF ASS'T. VICE PRESIDENT COMM. & SIGNAL, ATLANTA, GA.	M.P.: S-45.39
CHECKED BY: -	COLUMBUS, O. to SANDUSKY, O. FLGS at SILVER ST. - MARION	
IN SERVICE: MHB 12-13-92	SANDUSKY DISTRICT	FILE No. R-9545
PROPERTY NORFOLK AND WESTERN R.W.Y. CO.	CADD or DWG. No. SNCS04539.03	SHEET No. 3 of 16 17

REVISION	GETS	AS IN SERVICE	R-3252/JMB
INITIALS	01-06-12	12-14-12/CLR RSD/JLM	05-20-13

3000 PROGRAMMING CHART (LEVEL: J)	
NUMBER OF TRACK TRANSCEIVERS	2
T1: FREQUENCY	430Hz
T2: FREQUENCY	430Hz
T1: UNIDIRECTIONAL/BIDIRECTIONAL	BI
T2: UNIDIRECTIONAL/BIDIRECTIONAL	BI
T1: XMIT LEVEL (MAX/MED)	MAX
T2: XMIT LEVEL (MAX/MED)	MAX
T1: PREDICTOR/MOTION SENSOR	PRED
T2: PREDICTOR/MOTION SENSOR	PRED
T1: WARNING TIME	35 Sec
T2: WARNING TIME	35 Sec
T1: APPROACH DISTANCE	1340 Ft
T2: APPROACH DISTANCE	1340 Ft
UAX1 PICKUP DELAY (UAX) (0 = OFF)	25 Sec
ENA/UAX2 DELAY (0 = ENA)	0 Sec
T1: ISLAND DISTANCE	165 Ft
T2: ISLAND DISTANCE	165 Ft
NUMBER OF DAX'S	0 Eo
DAX A TRACK ASSIGNMENT (T1/T2)	---
DAX A DISTANCE (0 = PREEMPT)	F+
DAX A WARNING TIME	Sec
DAX B TRACK ASSIGNMENT (T1/T2)	---
DAX B DISTANCE (0 = PREEMPT)	F+
DAX B WARNING TIME	Sec
DAX C TRACK ASSIGNMENT (T1/T2)	---
DAX C DISTANCE (0 = PREEMPT)	F+
DAX C WARNING TIME	Sec
DAX D TRACK ASSIGNMENT (T1/T2)	---
DAX D DISTANCE (0 = PREEMPT)	F+
DAX D WARNING TIME	Sec
SLAVING (MASTER/SLAVE)	MASTER
PASSWORD ENABLED	NO
RECORDER INSTALLED	NO

EXPANDED PROGRAMMING

T1: SWITCH TO MS (ENTER EZ VALUE)	10 %
T2: SWITCH TO MS (ENTER EZ VALUE)	10 %
T1: TRANSFER DELAY MS TO GCP (0 = OFF)	0 Sec
T2: TRANSFER DELAY MS TO GCP (0 = OFF)	0 Sec
T1: TRANSFER MS TO GCP PRIME (ON/OFF)	---
T2: TRANSFER MS TO GCP PRIME (ON/OFF)	---
T1: TRANSFER MS TO GCP DAX A (ON/OFF)	---
T2: TRANSFER MS TO GCP DAX A (ON/OFF)	---
T1: TRANSFER MS TO GCP DAX B (ON/OFF)	---
T2: TRANSFER MS TO GCP DAX B (ON/OFF)	---
T1: TRANSFER MS TO GCP DAX C (ON/OFF)	---
T2: TRANSFER MS TO GCP DAX C (ON/OFF)	---
T1: TRANSFER MS TO GCP DAX D (ON/OFF)	---
T2: TRANSFER MS TO GCP DAX D (ON/OFF)	---
T1: PRIME PREDICTION OFFSET (0 = OFF)	0 Ft
T2: PRIME PREDICTION OFFSET (0 = OFF)	0 Ft
PICKUP DELAY PRIME	16 Sec
PICKUP DELAY DAX A	-- Sec
PICKUP DELAY DAX B	-- Sec
PICKUP DELAY DAX C	-- Sec
PICKUP DELAY DAX D	-- Sec
T1: ENHANCED DETECTION (ON/OFF)	OFF
T2: ENHANCED DETECTION (ON/OFF)	OFF
BACK-TO-BACK T1 AND T2 (NO/YES)	---
T1: STATION STOP TIMER	10 Sec
T2: STATION STOP TIMER	10 Sec
T1: NUMBER OF TRACK WIRES (4/6)	4
T2: NUMBER OF TRACK WIRES (4/6)	4
T1: LOW EX ADJUSTMENT	0
T2: LOW EX ADJUSTMENT	0
T1: LOW EZ DETECTION	OFF
T2: LOW EZ DETECTION	OFF
T1: LOW EZ DETECTION TIMER (ON/OFF)	10 Min
T2: LOW EZ DETECTION TIMER (ON/OFF)	10 Min
T1: POSITIVE START (EZ LEVEL) (0 = OFF)	0
T2: POSITIVE START (EZ LEVEL) (0 = OFF)	0
T1: POSITIVE START TIMEOUT (0 = NONE)	-- Min
T2: POSITIVE START TIMEOUT (0 = NONE)	-- Min
SET AT OPERATION (NORMAL/DIAGNOSTIC)	NORMAL
DIAGNOSTIC MESSAGES (ON/OFF)	ON
DAX MESSAGES (ON/OFF)	ON
ADVANCE PREEMPT TIMER (0 = OFF)	0
T1: MOTION SENSING LEVEL (0 = NORMAL)	0 %
T2: MOTION SENSING LEVEL (0 = NORMAL)	0 %

3000 PROGRAMMING NOTES:

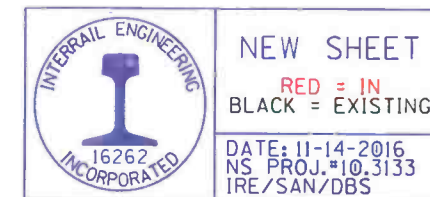
- 1) AVAILABLE WHEN "TRANSFER DELAY MS TO GCP" AND "PRIME PREDICTION OFFSET" IS ON
- 2) AVAILABLE WHEN "TRANSFER DELAY MS TO GCP" AND DAX DISTANCE IS GREATER THAN ZERO
- 3) AVAILABLE WHEN "ENHANCED DETECTION" IS ON
- 4) AVAILABLE WHEN "LOW EZ DETECTION" IS ON
- 5) AVAILABLE WHEN "POSITIVE START" IS ON

* = 1ST SLOT AT LEFT END OF BAY

MODEL 3000 GCP MODULE ASSEMBLIES										
MODULES POSITION	M1	M2	M3	M4	M5	M6	M7	M8	M9	M10
MODULE NUMBERS	80211-5.9 KHZ (1)	80211-15.2 KHZ (2)	80012 T/R 1	80012 T/R 2	80013 RLY DRV	80214 PROCS	80015 LOGG	80016 (1) DAX	80016 (2) DAX	80020 W/19
MODULES USED	x	x	x	x	x	x				x

NOTES:

- 1 - SEE IPI INSTRUCTION AND INSTALLATION MANUAL FOR 80211 ISLAND CALIBRATION PROCEDURE.
 - 2 - TOGGLE SWITCH ON MOTHER BOARD:
UP = DUAL FREQ.
DOWN = SINGLE FREQ.
- .. = 80214 & 80255 (WITH JUMPER) CARDS AND E-LEVEL OR LATER SOFTWARE NEEDED FOR SEAR II / ECHELON CAPABILITIES.

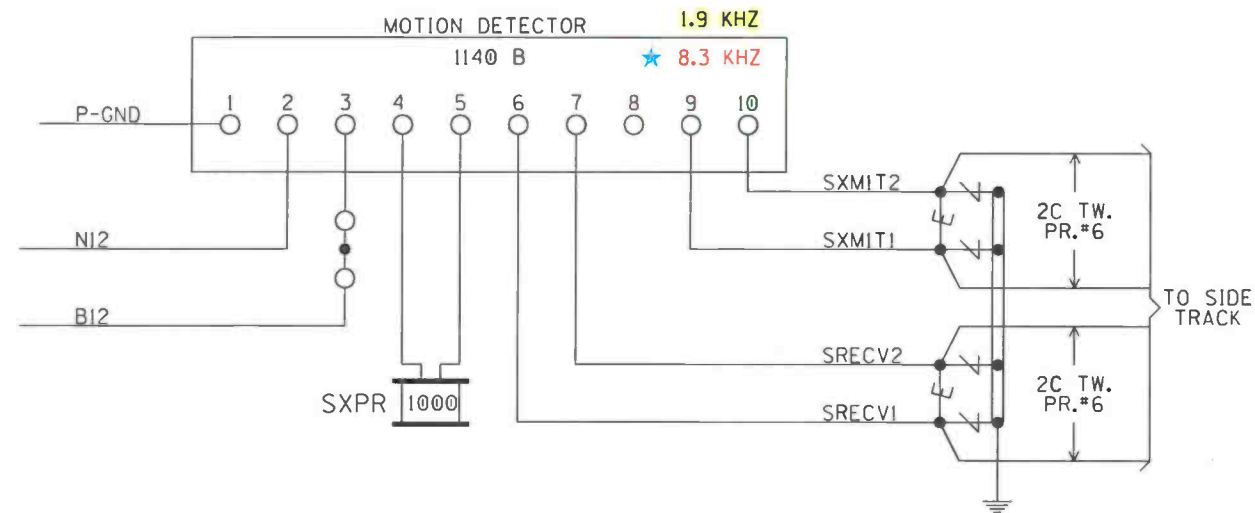


PANEL "A3" 3000 GCP SET-UP

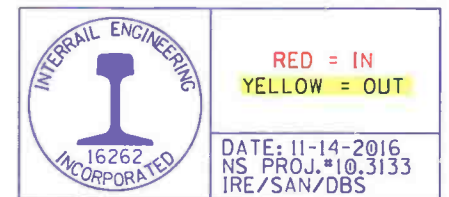
DESIGNED BY:	NS NORFOLK SOUTHERN		
SAN 11-14-16	DRAWN BY:	OFFICE OF ASS'T. VICE PRESIDENT COMM. & SIGNAL, ATLANTA, GA.	M.P.: S-045.39
IRE 10-26-16	CHECKED BY:	MARION, OH FLGS AT SILVER ST.	
DBS 11-15-16	IN SERVICE:	SANDUSKY DISTRICT	FILE No. R-
	- -	CADD or DWG. No. SNCS04539.04	SHEET No. 4 of 17

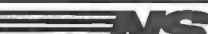
REVISION
INITIALS

PROPERTY
NORFOLK SOUTHERN RAILWAY CO.



★ = DRAFTING CORRECTION



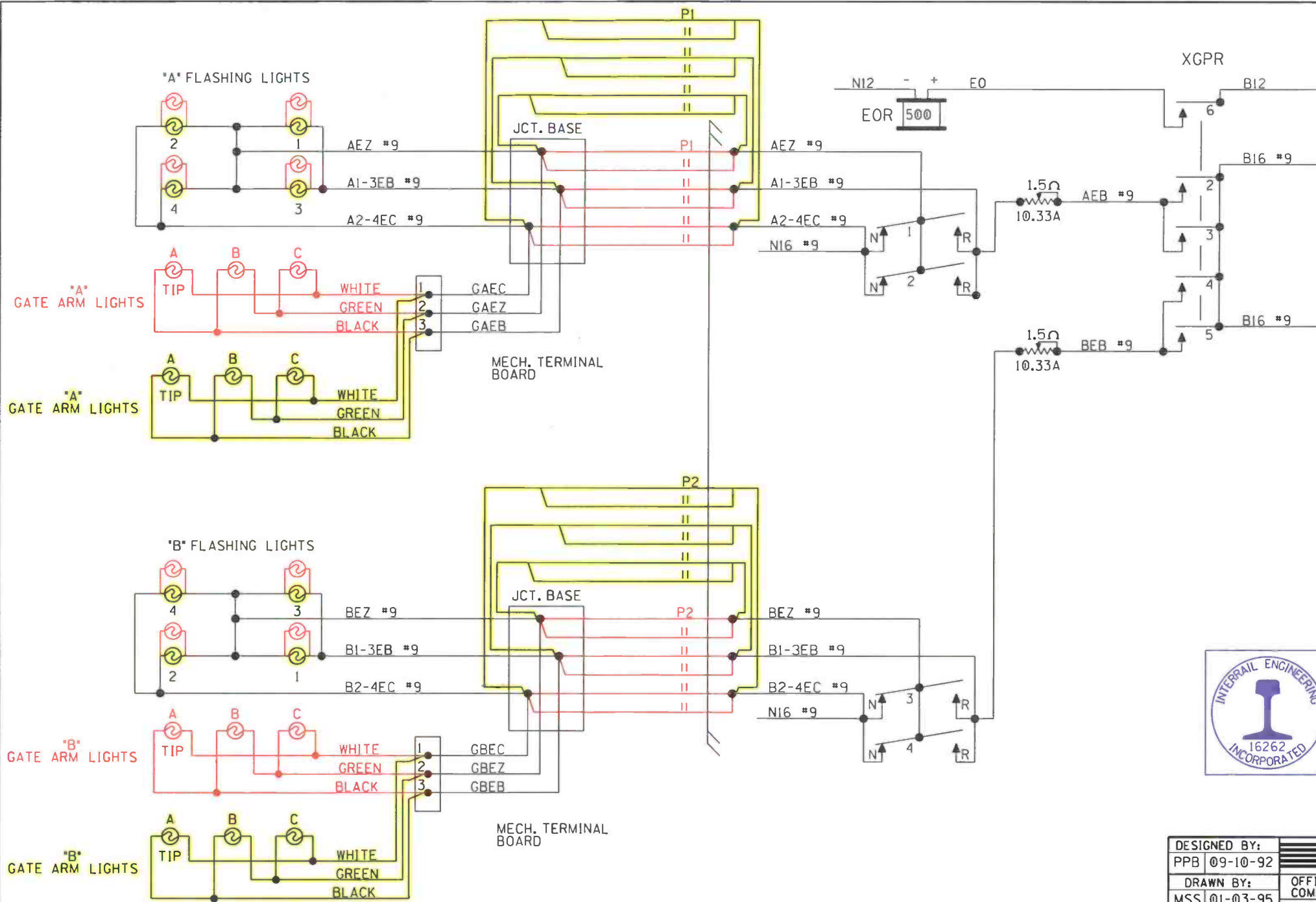
DESIGNED BY:		 NORFOLK SOUTHERN	
PPB	09-10-92		
DRAWN BY:		OFFICE OF ASS'T. VICE PRESIDENT	M.P.: S-45.39
MSS	01-03-95	COMM. & SIGNAL, ATLANTA, GA.	
CHECKED BY:		COLUMBUS, O. to SANDUSKY, O. FLGS at SILVER ST. - MARION	
	- -		
IN SERVICE:		SANDUSKY DISTRICT	FILE No. R-9545
MHB	12-13-92	CADD or DWG. No. SNCS04539.04	SHEET No. 4 of 16

SNCS04539.05

5 of 17

REVISION	WAS	SWS	SAN/IRE
INITIALS	07-16-96	09-04-96	12-05-16

PROPERTY
NORFOLK AND WESTERN R.WY. CO.






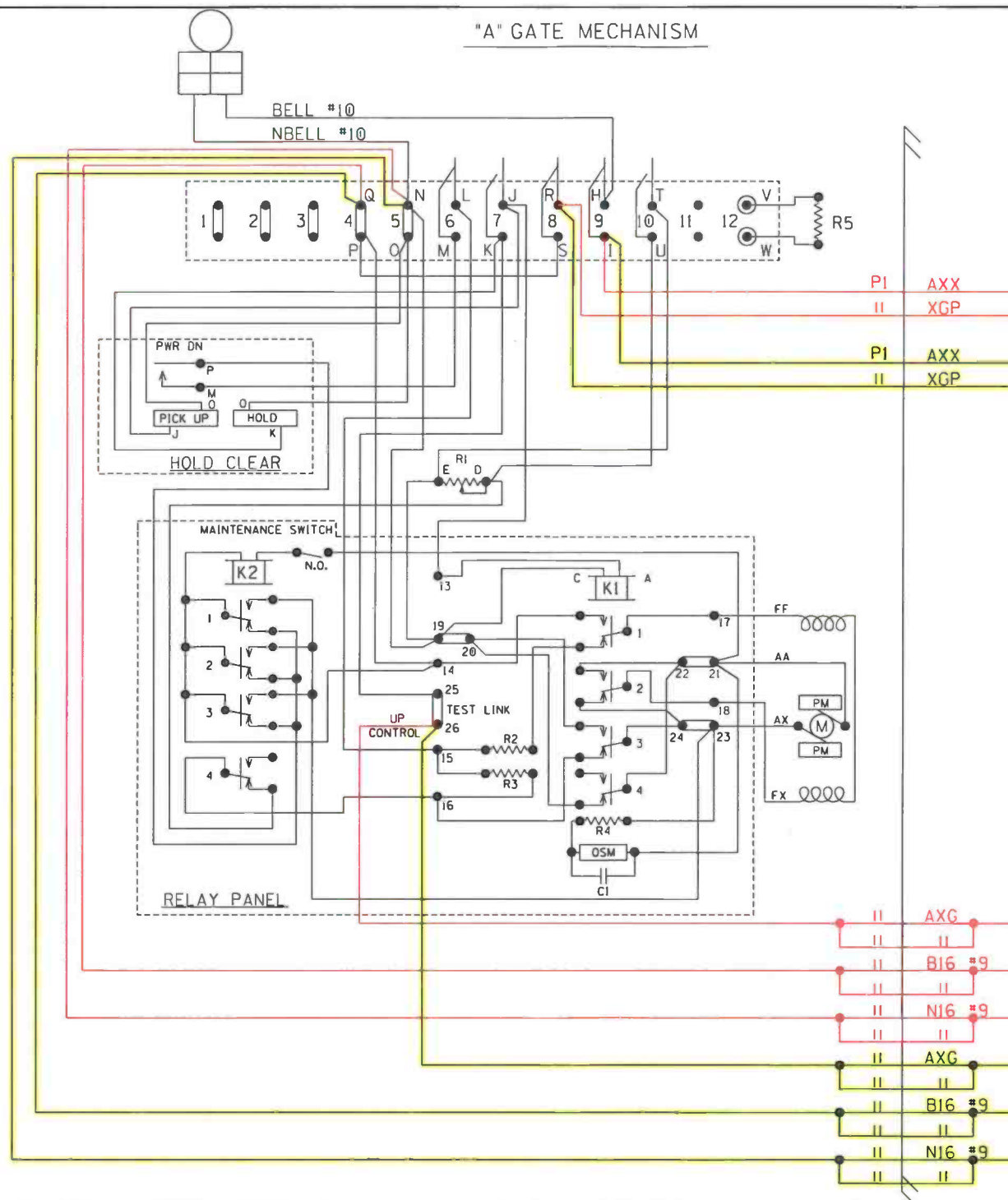
RED = IN

YELLOW = OUT

DATE: 11-14-2016
NS PROJ.#10,3133
IRE/SAN/DBS

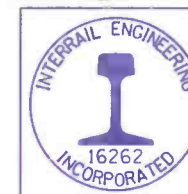
REVISION INITIALS	AS IN SERVICE 12-14-12/CLR RSD/JLM	SAN/IRE 12-05-16								PROPERTY NORFOLK AND WESTERN R.WY. CO.	DESIGNED BY: PPB 09-10-92 DRAWN BY: MSS 01-03-95 CHECKED BY: - - IN SERVICE: MHB 12-13-92	<div style="display: flex; align-items: center;">  <div style="margin-left: 5px;"> <p>NORFOLK SOUTHERN</p> <p>OFFICE OF ASS'T. VICE PRESIDENT COMM. & SIGNAL, ATLANTA, GA. M.P.: S-45.39</p> <p>COLUMBUS, O. to SANDUSKY, O. FLGS at SILVER ST. - MARION</p> <p>SANDUSKY DISTRICT</p> </div> </div> <div style="display: flex; justify-content: space-between; margin-top: 5px;"> <div> <p>CADD or DWG. No. SNCS04539.05</p> <p style="color: red;">SNCS04539.06</p> </div> <div> <p>FILE No. R-9545</p> <p>SHEET No. 5 of 16</p> <p style="color: red;">6 of 17</p> </div> </div>		
----------------------	--	---------------------	--	--	--	--	--	--	--	---	--	--	--	--

"A" GATE MECHANISM



SAFETRAN MODEL "S40" GATE

CONTACT SPACE	CONTACT CLOSED AT	FUNCTION OF CONTACT
(6) L-M	45° - 90°	POWER DOWN CONTROL
(7) J-K	0° - 89°	POWER UP CONTROL
(8) R-S	83° - 90°	FLASHING LGT. CONTROL
(9) H-I	5° - 90°	BELL CONTROL
(10) T-U	0° - 5°	HORIZONTAL SNUB



RED = IN
YELLOW = OUT

DATE: 11-14-2016
NS PROJ. #10,3133
IRE/SAN/DBS

"A" MODEL "S40" GATE MECHANISM

DESIGNED BY: PPB 09-10-92	NS NORFOLK SOUTHERN	
DRAWN BY: MSS 01-03-95	OFFICE OF ASS'T. VICE PRESIDENT COMM. & SIGNAL, ATLANTA, GA.	M.P.: S-45.39
CHECKED BY: -	COLUMBUS, O. to SANDUSKY, O. FLGS at SILVER ST. - MARION	
IN SERVICE: CLR 12-14-12	SANDUSKY DISTRICT	FILE NO. R-9545
	CADD or DWG. No. SNCS04539.07	SHEET No. 7 of 16

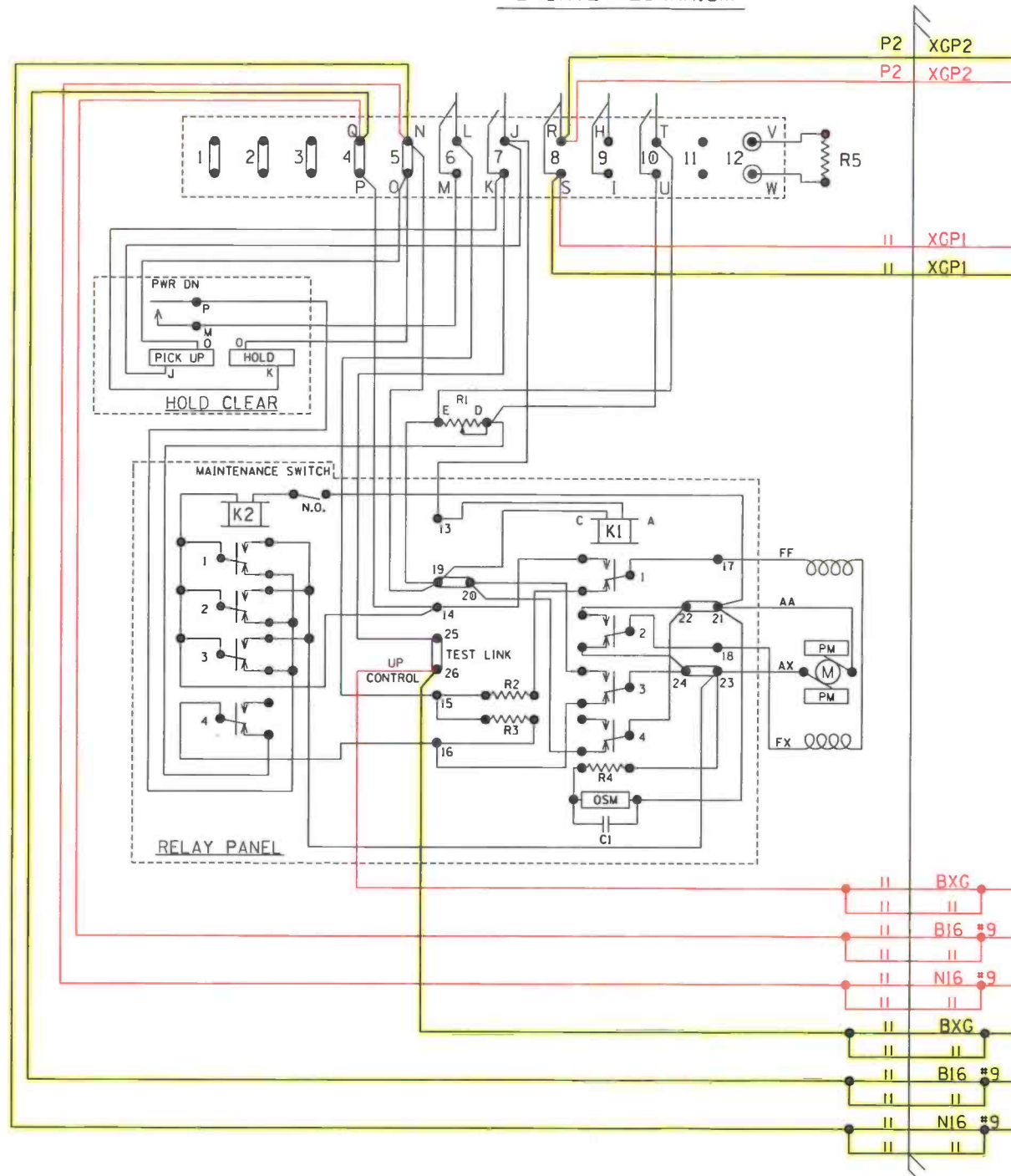
SNCS04539.08

8 of 17

REVISION INITIALS AS IN SERVICE 12-14-12/CLR RSD/JLM SAN/IRE 12-05-16

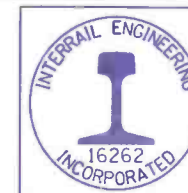
PROPERTY NORFOLK AND WESTERN RY. CO.

"B" GATE MECHANISM



SAFETRAN MODEL "S40" GATE


CONTACT SPACE	CONTACT CLOSED AT	FUNCTION OF CONTACT
(6) L-M	45° - 90°	POWER DOWN CONTROL
(7) J-K	0° - 89°	POWER UP CONTROL
(8) R-S	83° - 90°	FLASHING LGT. CONTROL
(9) H-I	5° - 90°	BELL CONTROL
(10) T-U	0° - 5°	HORIZONTAL SNUB



RED = IN
YELLOW = OUT

DATE: 11-14-2016
NS PROJ. #10.3133
IRE/SAN/DBS

"B" MODEL "S40" GATE MECHANISM

DESIGNED BY:	 NORFOLK SOUTHERN		
DRAWN BY:			
RSD 12-14-12	OFFICE OF ASS'T. VICE PRESIDENT COMM. & SIGNAL, ATLANTA, GA.		
CHECKED BY:	COLUMBUS, O. to SANDUSKY, O. FLGS at SILVER ST. - MARION		
JLM 12-14-12	SANDUSKY DISTRICT		
IN SERVICE:	FILE No. R-9545		
CLR 12-14-12	CADD or DWG. No. SNCS04539.08		
	SHEET No. 8 of 16		

REVISION INITIALS AS IN SERVICE 12-14-12/CLR RSD/JLM SAN/IRE 12-05-16

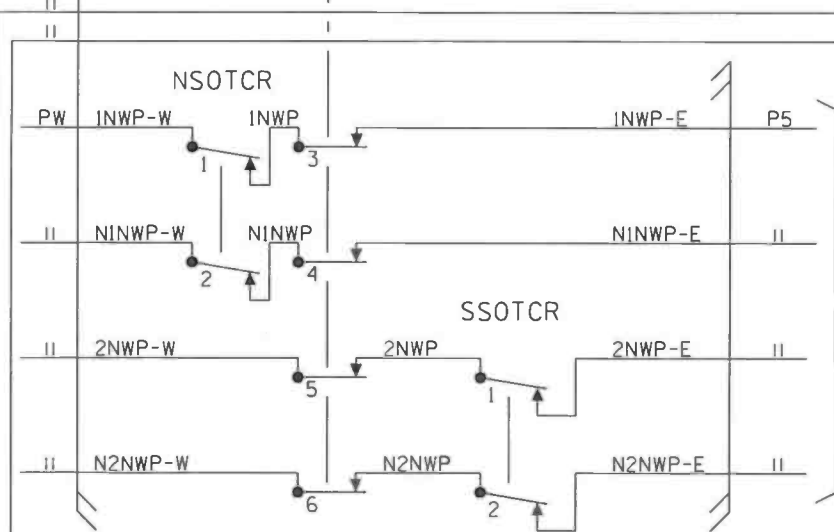
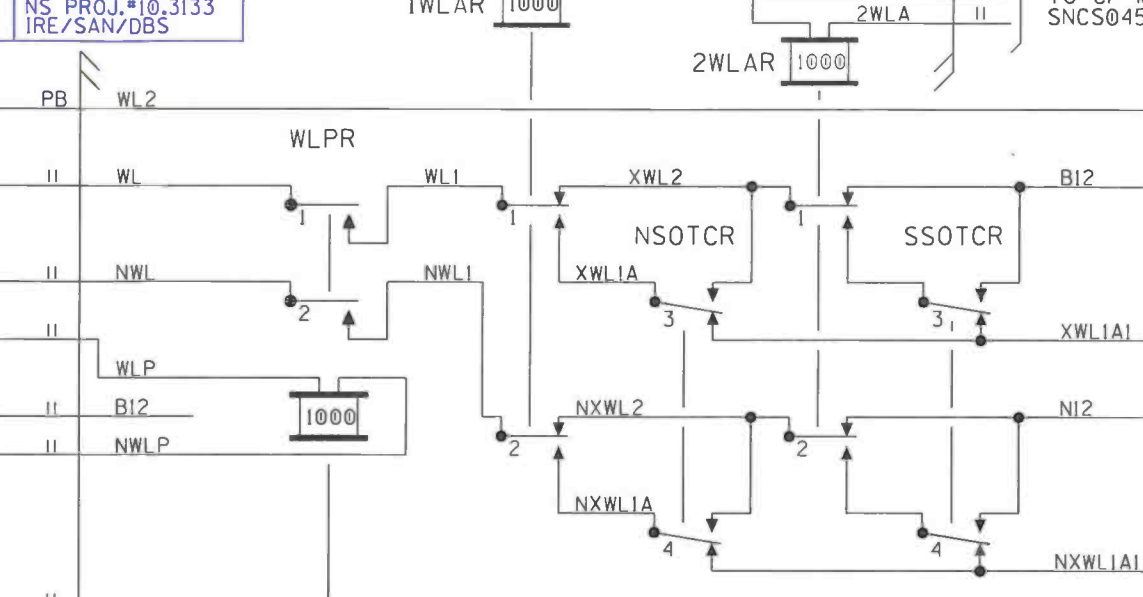
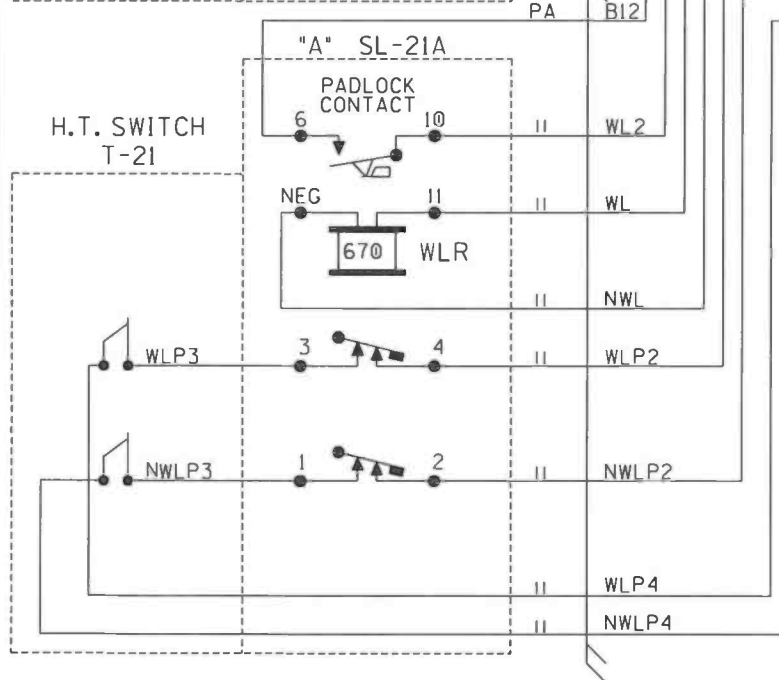
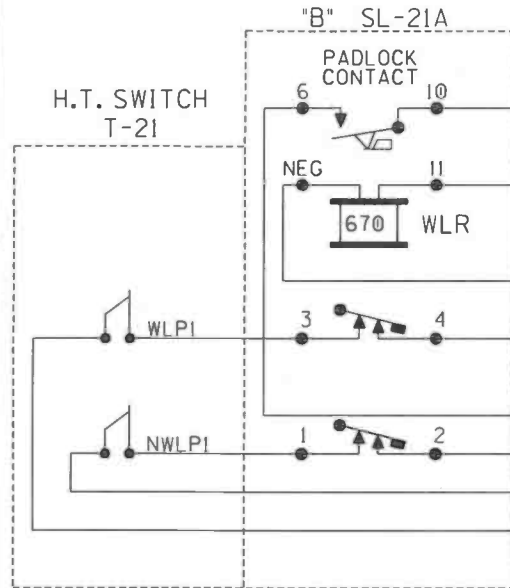
PROPERTY
NORFOLK AND WESTERN Rwy. CO.

SNCS04539.09

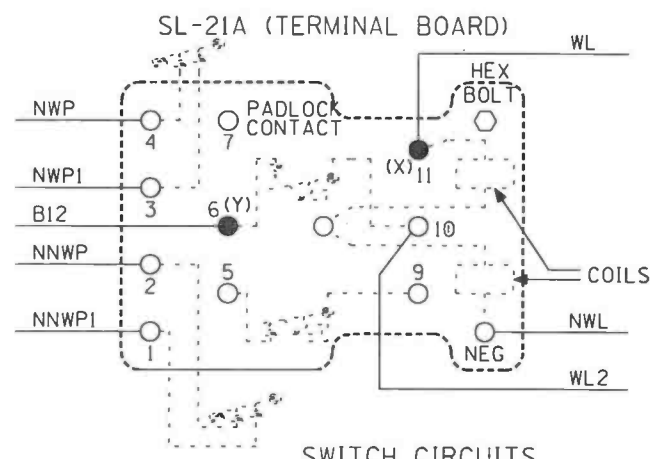
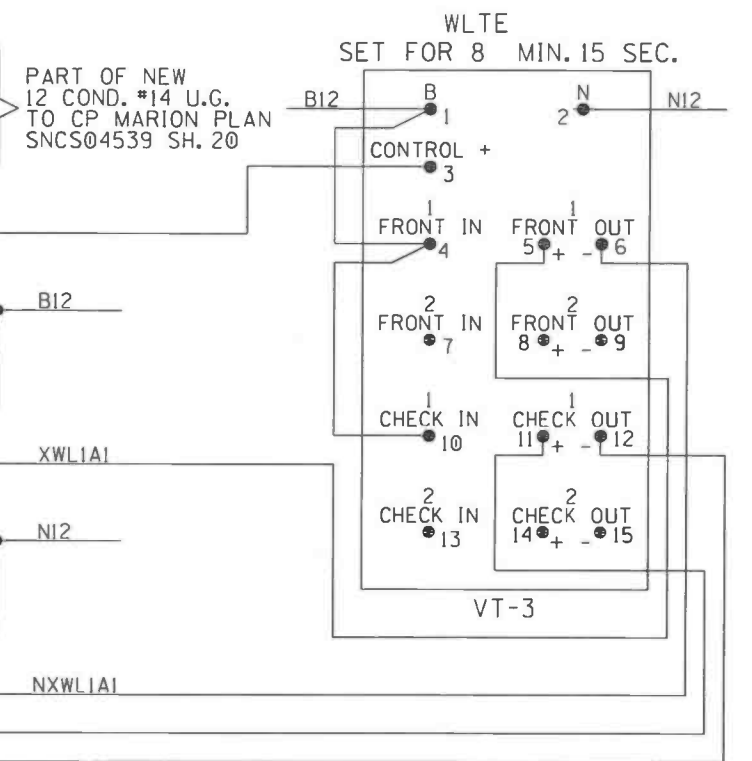
9 of 17



RED = IN
YELLOW = OUT
DATE: 11-14-2016
NS PROJ.*10.3133
IRE/SAN/DBS



NOTE:
POSSIBLE INTERNAL WIRE ON COIL WILL
REQUIRE MOVING FROM LOCATION (Y)
TO LOCATION (X).
WIRES SHOWN LIGHTLY DOTTED TO BE
WIRED INTERNALLY.



SWITCH CIRCUITS

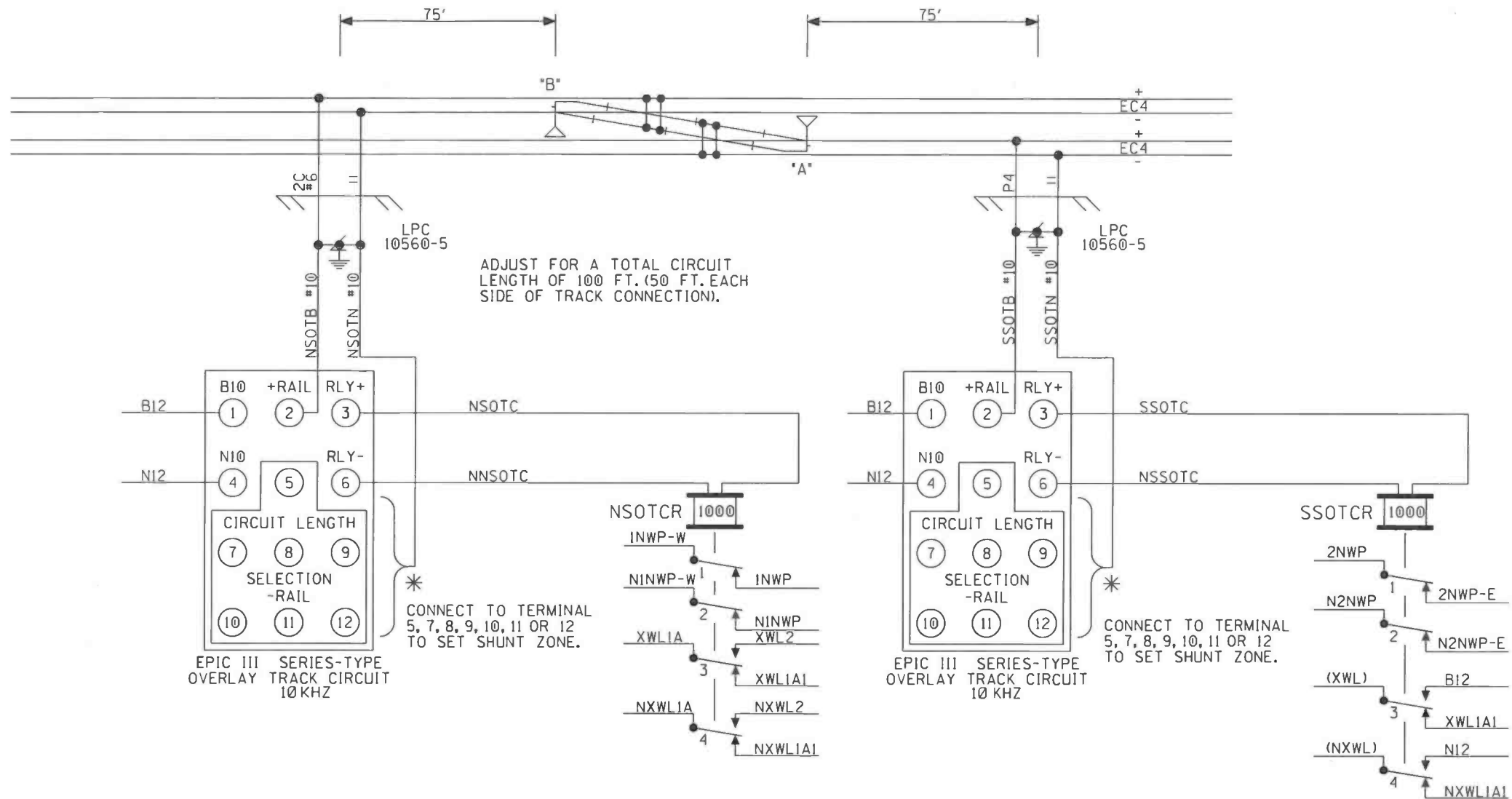
DESIGNED BY: PPB 09-10-92	NS NORFOLK SOUTHERN	
DRAWN BY: MSS 01-03-95	OFFICE OF ASS'T. VICE PRESIDENT COMM. & SIGNAL, ATLANTA, GA.	M.P.: S-45.39
CHECKED BY: -	COLUMBUS, O. to SANDUSKY, O. FLGS at SILVER ST. - MARION	
IN SERVICE: MHB 12-13-92	SANDUSKY DISTRICT	FILE No. R-9545
	CADD or DWG. No. SNCS04539.09	SHEET No. 9 of 16

REVISION
INITIALS
GETS 01-06-12
R-3252/JMB 05-20-13

PROPERTY
NORFOLK AND WESTERN R.WY. CO.

TO SANDUSKY

TO COLUMBUS



RED = IN
YELLOW = OUT

DATE: 11-14-2016
NS PROJ. #10.3133
IRE/SAN/DBS

SWITCH CIRCUITS

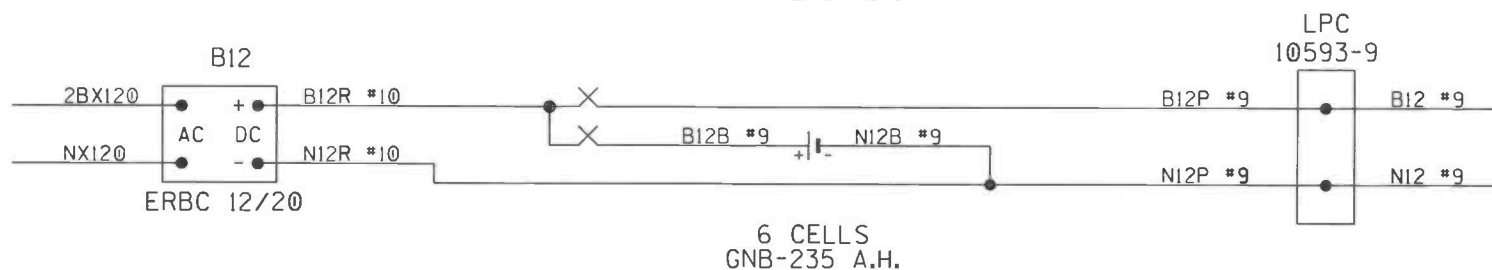
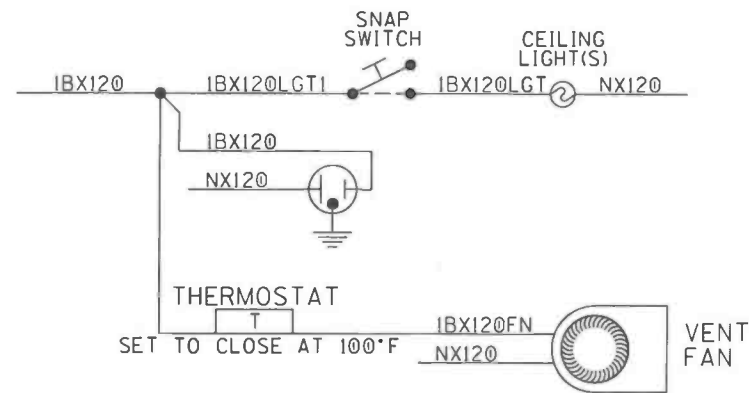
DESIGNED BY:	PPB	09-10-92	NORFOLK SOUTHERN	
DRAWN BY:	MSS	01-03-95		
CHECKED BY:	-	-	OFFICE OF ASS'T. VICE PRESIDENT COMM. & SIGNAL, ATLANTA, GA.	
IN SERVICE:	MHB	12-13-92	COLUMBUS, O. to SANDUSKY, O. FLGS at SILVER ST. - MARION	
			SANDUSKY DISTRICT	FILE NO. R-9545
			CADD or DWG. No. SNCS04539.10	SHEET No. 10 of 16


SNCS04539.11

11 of 17

REVISION
INITIALS

PROPERTY
NORFOLK AND WESTERN RY. CO.



DESIGNED BY:		 NORFOLK SOUTHERN	
PPB	09-10-92		
DRAWN BY:		OFFICE OF ASS'T. VICE PRESIDENT	M.P.: S-45.39
MSS	01-03-95	COMM. & SIGNAL, ATLANTA, GA.	
CHECKED BY:		COLUMBUS, O. to SANDUSKY, O. FLGS at SILVER ST. - MARION	
IN SERVICE:		SANDUSKY DISTRICT	FILE NO. R-9545
MHB	12-13-92	CADD or Dwg. No. SNCS04539.11	SHEET No. 11 of 16

REVISION
INITIALS

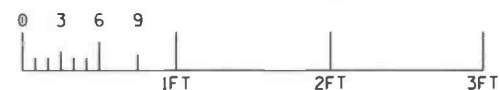
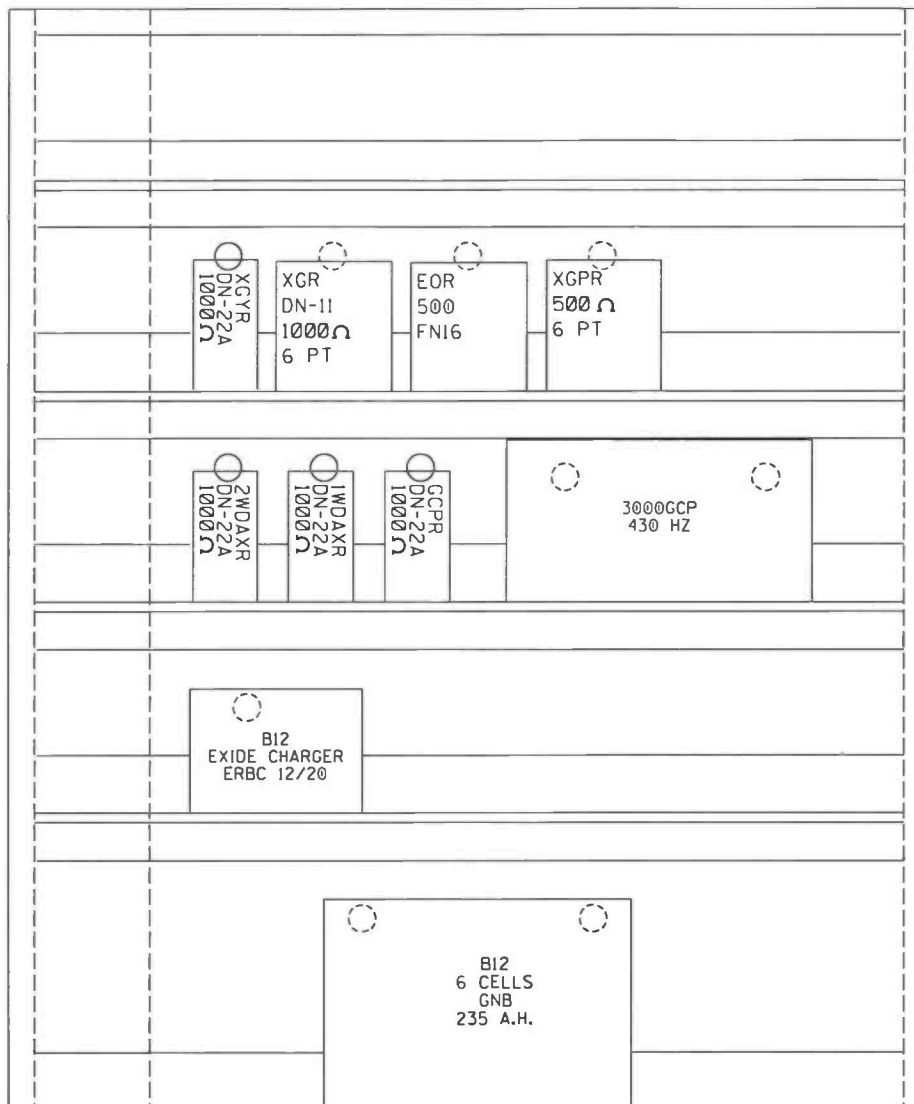
PROPERTY
NORFOLK AND WESTERN R.WY. CO.

SNCS04539.12

12 of 17

MATCH TO BACK ON NEXT SHEET

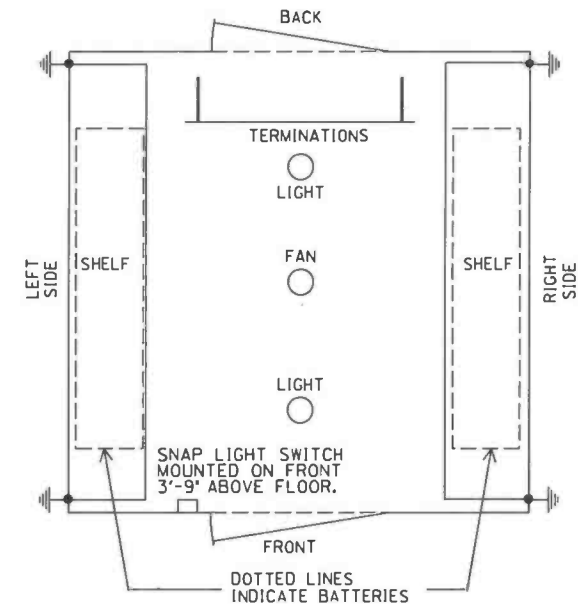
RIGHT SIDE



NOTE: HOLES FOR WIRE AND CABLE CONDUCTORS SHALL BE 1/2" IN DIAMETER. HOLES FOR WIRES TO RELAYS AND INSTRUMENTS SHALL BE 1 3/4" IN DIAMETER.



TOP VIEW



6' X 6' HOUSE (INSULATED)



DESIGNED BY:	PPB 09-10-92	NS NORFOLK SOUTHERN
DRAWN BY:	MSS 01-03-95	
CHECKED BY:	-	
IN SERVICE:	MHB 12-13-92	
OFFICE OF ASS'T. VICE PRESIDENT COMM. & SIGNAL, ATLANTA, GA.		M.P.: S-45.39
COLUMBUS, O. to SANDUSKY, O. FLGS at SILVER ST. - MARION		
SANDUSKY DISTRICT		FILE NO. R-9545
CADD or DWG. No.	SNCS04539.12	SHEET No. 12 of 16
SNCS04539.13		13 of 17

REVISION INITIALS | WAS 07-16-96 | SWS 09-04-96 |

PROPERTY
NORFOLK AND WESTERN Rwy. CO.

NOTE: KEEP GROUND CONNECTION OF LINE ARRESTERS AS SHORT AS POSSIBLE WITH SLIGHT BEND IN GROUND CONNECTION WIRE OFF ARRESTER TO COPPER BUSS BAR.

ALL ARRESTERS AND TERMINATION BLOCKS SHOWN ON ILLUSTRATION ARE TO BEGIN FROM CENTER OF BOARD. THE ILLUSTRATION SHOWS MAXIMUM POSSIBLE ON TERMINATION BOARD. ALL MAY NOT BE REQUIRED.

- = BOLTED GROUND CONNECTIONS TO SHELTER FLOORS AND TO WALLS ARE TO USE STAR WASHERS ON INTERIOR AND EXTERIOR SIDES.

HOLES FOR WIRE AND CABLE CONDUCTORS SHALL BE 1/2" DIAMETER.

HOLES FOR WIRES TO RELAYS AND INSTRUMENTS TO BE 1 3/4" IN DIAMETER.

SEE STANDARD GROUNDING PLAN E-711-A FOR DETAIL III

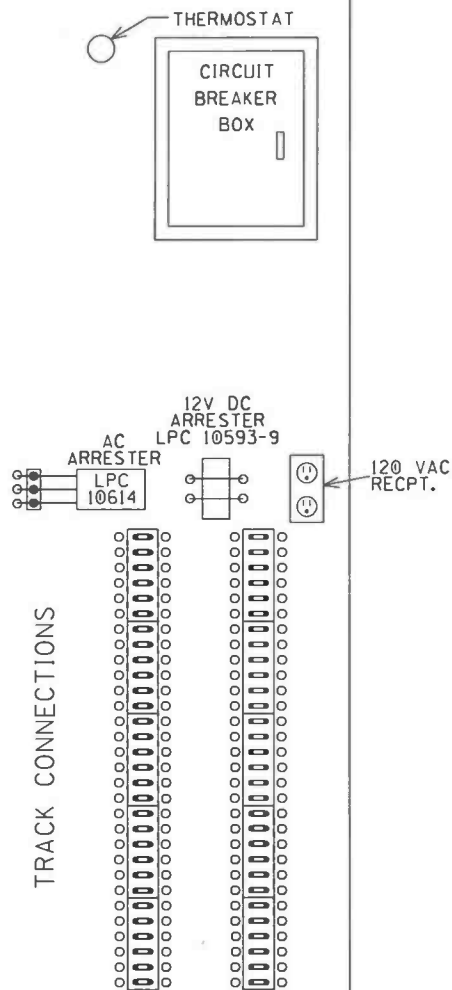
BACK

MATCH TO LEFT SIDE ON NEXT SHEET

MATCH TO RIGHT SIDE ON PREVIOUS SHEET

SEE STANDARD GROUNDING PLAN E-711-A FOR DETAIL III

UNDERGROUND CABLE TERMINATION



REVISION
INITIALS

PROPERTY
NORFOLK AND WESTERN Rwy. CO.

DESIGNED BY:	PPB	09-10-92	NS NORFOLK SOUTHERN	
DRAWN BY:	MSS	01-03-95	OFFICE OF ASS'T. VICE PRESIDENT COMM. & SIGNAL, ATLANTA, GA.	M.P.: S-45.39
CHECKED BY:	-	-	COLUMBUS, O. to SANDUSKY, O. FLGS at SILVER ST. - MARION	
IN SERVICE:	MHB	12-13-92	SANDUSKY DISTRICT	FILE NO. R-9545
CADD or DWG. No.	SNCS04539.13		SHEET No. 13 of 16	14 of 17

NSOTC 10.K	SSOTC 10.K	SIDE TRACK MOTION DETECTOR 8.3 KHZ 1.9 KHZ	NSOTCR DN-11 1000Ω 4 PT	SSOTCR DN-11 1000Ω 4 PT	SXPR DN-22A 1000Ω
2WLAR DN-22A 1000Ω	1WLAR DN-22A 1000Ω	WLPR DN-11 1000Ω 6 PT	WLTE VT-3R		
B16 EXIDE CHARGER ERBC 12/20					
		B16 7 CELLS GNB 235 A.H.			

HOLES FOR WIRE AND CABLE CONDUCTORS
SHALL BE 1/2" IN DIAMETER.


MATCH TO BACK ON PREVIOUS SHEET

DATE: 11-14-2016
NS PROJ.#10.3133
IRE/SAN/DBS



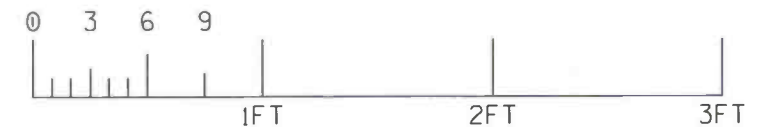
REVISION INITIALS	WAS 07-16-96	SWS 09-04-96	SAN/IRE 12-05-16
----------------------	-----------------	-----------------	---------------------


PROPERTY
NORFOLK AND WESTERN Rwy. CO.

DESIGNED BY:	PPB 09-10-92	 NORFOLK SOUTHERN
DRAWN BY:	MSS 01-03-95	
CHECKED BY:	- -	
IN SERVICE:	MHB 12-13-92	
OFFICE OF ASS'T. VICE PRESIDENT COMM. & SIGNAL, ATLANTA, GA.		M.P.: S-45.39 COLUMBUS, O. to SANDUSKY, O. FLGS at SILVER ST. - MARION
SANDUSKY DISTRICT		FILE NO. R-9545
CADD or DWG. No. SNCS04539.14 SNCS04539.15		SHEET No. 14 of 16 15 of 17

[illegible]

HOLES FOR WIRES TO RELAYS AND
INSTRUMENTS SHALL BE 1 3/4" IN DIAMETER.



DESIGNED BY:	PPB 09-18-92	 NORFOLK SOUTHERN
DRAWN BY:	MSS 12-27-94	
CHECKED BY:	PPB 11-25-92	
IN SERVICE:	MHB 12-08-92	
OFFICE OF ASST. VICE PRESIDENT COMM. & SIGNAL, ATLANTA, GA.		M.P.: S-45.39
COLUMBUS, O. TO SANDUSKY, O. - TC FLGS & X-OVER AT SILVER ST. - MARION, O.		
SANDUSKY DISTRICT		FILE NO. R-9545
CADD and DWG. No.	SNCS04539.15	SHEET No. 15 of 16
SNCS04539.16		16 of 17



OHIO RAIL DEVELOPMENT COMMISSION

Mail Stop #3140, 1980 West Broad Street, Columbus OH 43223

John R. Kasich, Governor • Mark Policinski, ORDC Chairman

September 27, 2016

Mr. Stephen Klinger
Public Projects Engineer
1200 Peachtree Street, Box 123
Atlanta, Ga. 30309

RE: Marion County, Silver Street, DOT 481538V, PID 103769
Marion County, SR 739, DOT 481532E, PID 103759
Erie County, Vermilion Road, DOT 524037N, PID 103770

Dear Mr. Klinger:

Diagnostic reviews were held at the above grade crossings. These crossings have been recommended for certain upgrades in the diagnostic surveys. Please take note to these recommendations individually.

NS is authorized to proceed with the site plans and cost estimates (PE) for these projects. This authorization is made with the stipulation and understanding that any field work needs prior approval before work begins. This authorization is made with the stipulation and understanding that an approved estimate may contain entries for items or activities that may be cited and found to be ineligible for federal participation during the project audit.

The ORDC is not requesting that the PUCO issue an Order at this time. When the ORDC receives the PE it will be evaluated and a construction-only Order will be requested from PUCO. Please submit the PE to ORDC within 90 days of receipt of this letter.

The diagnostic review forms are attached. Please note any recommendations for each crossing in the survey, if any, made by the team with regard to requirements for this location. Any minor roadway work necessary for MUTCD compliance should be incorporated into the PE and such costs will flow through the railroad reimbursement process

The Project Manager for this project is Joe Reinhardt. He can be reached at (614) 644.0291, or Joe.Reinhardt@dot.state.oh.us, if you have any questions.

Sincerely,

Joseph N. Reinhardt
Project Manager

C: Jill Henry, PUCO
ORDC (file)



www.rail.ohio.gov

phone: 614.644.0306

IMPROVING RAIL TODAY FOR TOMORROW'S ECONOMY



OHIO RAIL DEVELOPMENT COMMISSION

Mail Stop #3140, 1980 West Broad Street, Columbus OH 43223

John R. Kasich, Governor • Mark Policinski, ORDC Chairman

August 24, 2016

Norfolk Southern Railway Company
Mr. Stephen Klinger
Administrator Highway Grade Crossing Improvements
1200 Peachtree Street
Atlanta, GA 30309-3597

Subject: Grade Crossing Warning Device Modifications
Marion County, Silver Street, DOT # 481538V, PID 103769

Dear Mr. Klinger:

A diagnostic review was conducted at the subject grade crossing on 4/8/16. As a result of the review, the devices will receive LED upgrades and curb for MUTCD compliance.

This project shall be completed in compliance with Agreement No. 17450, dated December 19, 2012, entered into by the State of Ohio and Norfolk Southern Railway Company (NS) and incorporated as if fully rewritten herein. This construction shall also meet the general terms and conditions under the Moving Ahead for Progress in the 21st Century Act (MAP-21) and subsequent amendments and the State of Ohio's Federally Funded Warning Device Program.

Preliminary engineering (PE) and construction costs shall be borne one hundred percent (100%) by ORDC. Reimbursable costs will be limited by the ORDC based on approved estimates and bid tabulations, if applicable. These limits will be quantified by the ORDC in its construction authorization to NS and may be amended by the ORDC based on revised estimates and bid tabulations.

This Letter Agreement and the approved plans constitute the scope of the project. NS shall notify ORDC in writing of any changes in the scope of work which are not in the approved plans and estimates and secure approval in writing of same before the work is performed.

PE will not be commenced by NS prior to ORDC issuing a PE authorization. PE will be submitted by NS to ORDC within ninety (90) days or other time specified by ORDC in the PE authorization. Construction will not be commenced by NS prior to ORDC issuing a construction authorization. Construction will be completed by NS within nine (9) months or other time specified in the time specified by ORDC in the construction authorization.

Please indicate your acceptance of the terms and conditions of this Letter Agreement by signing and returning one (1) copy to me at the address listed above and retain a copy for your files. This Agreement may be executed in one or more counterparts, each of which shall be deemed to be a duplicate original, but all of which taken together shall be deemed to constitute a single Agreement.

Sincerely,

Matthew R. Dietrich
Executive Director



www.rail.ohio.gov

phone: 614.644.0306

IMPROVING RAIL TODAY FOR TOMORROW'S ECONOMY

Norfolk Southern:

By: Gregory K. Constock

Title: General Manager

Date: 9-6-16

X:\tr agreements\MAR Silver St PID 103769 NS



High Hazard Crossing With Active Warning Devices			
Street Name: Silver Street		County: MAR	
LHA: City of Marion		USDOT#: 481538V	
Nearest City: Marion		Hazard Rank: 10	
Roadway Information			
ADT: 3499 (2011)		Posted Speed Limit: None Listed. <i>35mph</i>	
Railroad: Norfolk Southern		Number of Tracks: 3	
Train Count: 34		Speed Over Crossing: 30	
Storage Distance (Ft.): None Listed.		Train Detection Type: CWT	
Accidents			
Accident Factors		2 of Accidents in Last 5 Years:	
		0 of Fatalities in Last 5 Years:	
Accident Date	11/30/2013	11/19/2012	
Position of Accident	Moving over Crossing	Moving over Crossing	
Circumstance	Rail equip. struck by highway user	Rail equip. struck by highway user	
Visibility/Time of Day	Dark	Dark	
Weather Conditions	Clear	Clear	
Crossing Interconnect.	No	No	
Crossing Illuminated	Yes	No	
Drove Around Train	No	No	
Highway User Action	Drove around the gate	Drove around the gate	
Alcohol/Drug Related?			
Driver Speeding?			
Other Notes: 11/30/2013: Motorist drove around gate and was stuck. Motorist fled the scene. 11/19/2012: Motorist drove around the gates and struck first car of reversing train.			
Recommendations: <i>LED LIGHT UPGRADE</i> <i>STOP BAR MOVEMENT</i>			
<i>CORRECT</i> <i>SEND LINE DELIMITER INFO TO CITY</i>			

County: MAR

Route: Silver Street

DOT#: 481538V

Date: 4/8/2016

Existing Traffic Control Devices

Type of Warning Devices	Installed?		Quantity/Comments
Advance Warning Signs (condition?)	<input checked="" type="radio"/> Yes	<input type="radio"/> No	GOOD
'Stop' Signs	Yes	<input checked="" type="radio"/> No	
'Stop Ahead' Signs	Yes	<input checked="" type="radio"/> No	
Pavement Markings (condition?)	<input checked="" type="radio"/> Yes	<input type="radio"/> No	AVERAGE
Crossbucks	<input checked="" type="radio"/> Yes	<input type="radio"/> No	GOOD
Number of Tracks Signs	Yes	<input checked="" type="radio"/> No	
Inventory Tags	<input checked="" type="radio"/> Yes	<input type="radio"/> No	
Interconnected Highway Traffic Signal	Yes	<input checked="" type="radio"/> No	
Mast-Mounted Flashing Lights	<input checked="" type="radio"/> Yes	<input type="radio"/> No	
Cantilever Flashing Lights	Yes	<input checked="" type="radio"/> No	Number: Length:
Side Lights	Yes	<input checked="" type="radio"/> No	
Automatic Gates	<input checked="" type="radio"/> Yes	<input type="radio"/> No	Number: Length:
Bells	<input checked="" type="radio"/> Yes	<input type="radio"/> No	Number:
Sidewalk Gate Arms	<input checked="" type="radio"/> Yes	<input type="radio"/> No	
'No Turn' Signs	Yes	<input checked="" type="radio"/> No	
Illumination	<input checked="" type="radio"/> Yes	<input type="radio"/> No	
Is crossing flagged by train crew?	Yes	<input checked="" type="radio"/> No	
Other	Yes	<input type="radio"/> No	

Railroad Data

Railroad Characteristics	Initial Information (from database)	Revised
Total trains per day	34	
< 1 per day		
Day thru trains	16	
Night thru trains	16	
Daytime switching movements	2	
Nighttime switching movements	0	
Total number of tracks	3	
Number of main tracks	3	
Number of other tracks	1 (Siding)	
Maximum train speed	30	
Typical train speed		
Amtrak		
If multiple tracks, can two trains occupy crossing at the same time? <input checked="" type="radio"/> Yes <input type="radio"/> No Can one train block the motorists' view of another train at crossing? <input checked="" type="radio"/> Yes (Explain below) <input type="radio"/> No SWITCHING YARD NEAR CROSSING. Can one or more tracks be eliminated through the crossing? Yes <input checked="" type="radio"/> No Are there other track(s) crossing this same roadway within 100 ft of this crossing? Yes <input checked="" type="radio"/> No If yes, Crossing DOT # (if different) _____ If yes, distance _____ (take measurement between track centerlines at closest point along roadway)		

County: MAR

Route: Silver Street

DOT#: 481538V

Date: 4/8/2016

Roadway Data

Local Highway Authority: City of Marion

Roadway Characteristics	Initial Information (from database)	Revised
Average daily traffic 3499 (2011)		
Highway paved	Yes X No	Yes No
Roadway Surface: <u>Blacktop</u> Gravel Concrete Other _____		
Roadway width: <u>30</u> ft.		
Number of highway lanes	2	
Urban or Rural	Urban	
Vehicle Speed: <u>35</u> MPH	Not Listed.	
School Bus Operation: No <u>Yes</u> Amount <u>10+</u> <u>ELEMENTARY SCH NEAR CROSSING.</u>		
Hazardous Materials Trucks: No <u>Yes</u> X Amount <u>.04</u>		
Shoulders: No <u>Yes</u>		
Is the shoulder surfaced? No <u>Yes</u>		
Is there existing guardrail along roadway in crossing vicinity? <u>No</u> Yes		
Is stopping site distance adequate? (See Table 2) <u>Yes</u> No If no, deficient approach(es) _____		
Quadrant _____ Curb and Gutter: Functional (Curb height = 4" or more) Non-functional (Curb height = Less than 4") None	Quadrant _____ Curb and Gutter: Functional (Curb height = 4" or more) Non-functional (Curb height = Less than 4") None	
Pedestrians: No <u>Yes</u>		
Is sidewalk present? No <u>Yes</u>		
Is there a nearby intersection that could cause queuing over the crossing? <u>No</u> Yes		
If yes, Street Name _____ Distance _____ Is this intersection signalized? No Yes Are the signals currently interconnected with the existing crossing warning devices? No Yes Is there a 'Do not Stop on Track' sign? No Yes		
Is a roadway improvement project (e.g. widening, turn lanes, nearby new or upgraded traffic signal, sidewalk) planned at or near this location in the foreseeable future? No Yes		
If yes, Improvement type _____ Lead Agency _____ Timeline/completion _____		
Is it the consensus of the Diagnostic Review Team that this is a potential closure project? <u>No</u> Yes		
Explain reasons:		

Type of Development

Open Space Institutional

Industrial CommercialResidential

Location of nearby schools:

ELEMENTARY SCHOOL WITHIN A FEW BLOCKS OF CROSSING. TO THE WESTHARDING ELEMENTARY

County: MAR

Route: Silver Street

DOT#: 481538V

Date: 4/8/2016

Potential Red Flags / Project Challenges

Traffic Signal Preemption (include traffic signal intersection name and LHA with jurisdiction over traffic signal, if known):

NO

Crossing Consolidation or Closure:

NO

Real Estate or ROW:

NO

Culverts / Drainage / Ballast Conditions:

NO

Roadway and/or Sidewalks:

YES

Circuitry (e.g. reaches out to other crossings, specific needs, etc.): WHAT KIND? PRE-EMPT?

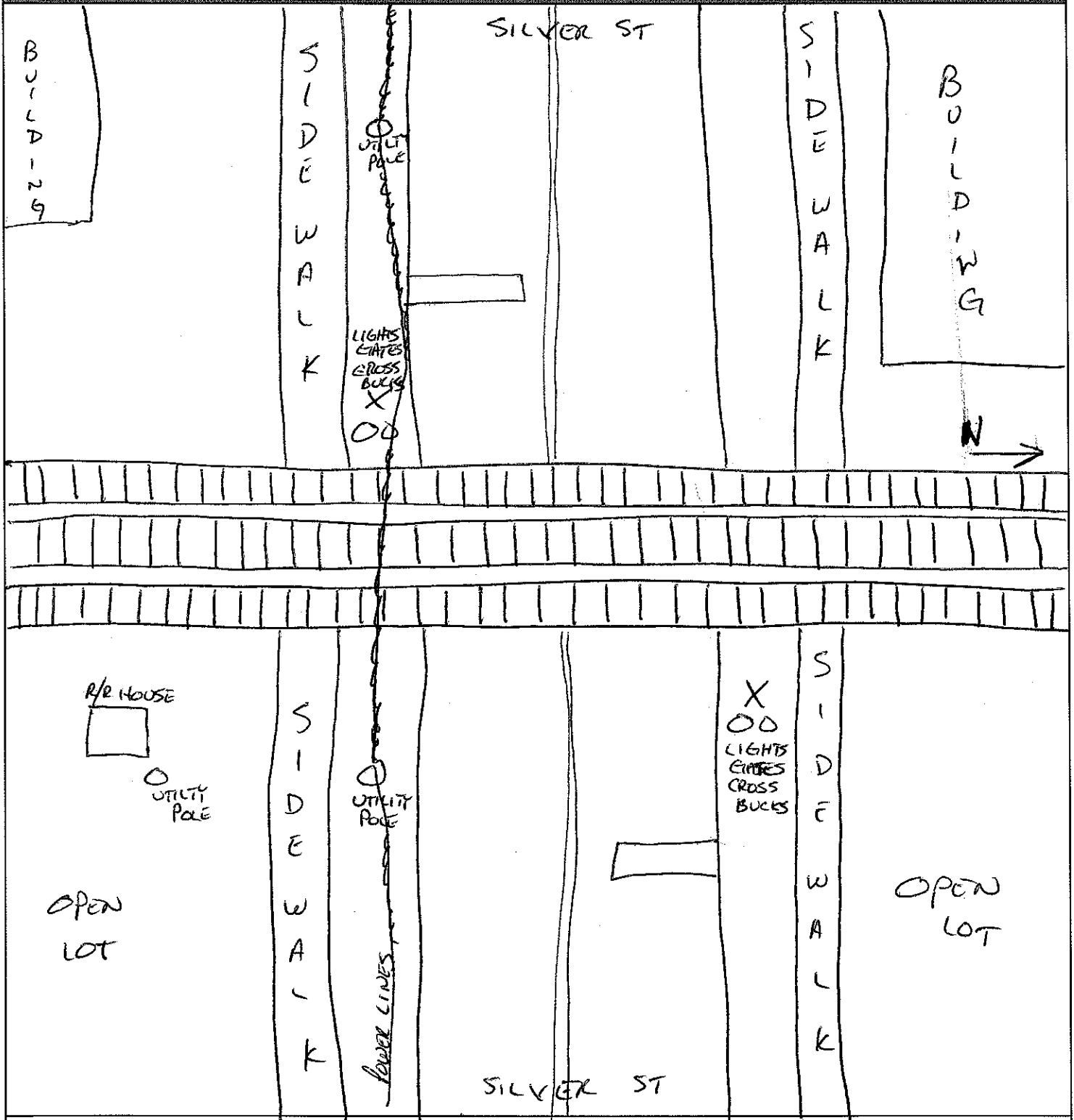
?

Environmental:

NO

Other:

Field Sketch



Crossing Angle ☐ 0-29° ☐ 30-59° ☒ 60-90° Measured in _____ Quadrant?

Sketch by: GWB

Clearing Sight Distances

Maximum Authorized Train Speed	Distance (dT) Along Railroad from Crossing (ft)
1 - 10	240
15	360
20	480
25	600
30	720
35	840
40	960
45	1080
50	1200
55	1320
60	1440
65	1560
70	1680
75	1800
80	1920
85	2040
90	2160

Source: R-H Grade Crossing Handbook Table 36 (pp. 132-133)

Notes:

All calculated distances are rounded up to the next higher 5-foot increment.

Distances indicated are for 65-ft double bottom semi-tractor trailers and level single track 90 degree crossings; and may need to be adjusted for multiple tracks, skewed crossings or approaches on grades.

Clearing Sight Distance is to be measured in each vehicle travel direction at non-gated crossings as viewed from a point 25 feet from centerline of nearest track in the center of whichever travel lane is nearest the direction along track being measured.

Stopping Sight Distances

Highway Vehicle Speed	Distance (dH) Along Roadway from Crossing (ft)
0	n/a
5	50
10	70
15	105
20	135
25	180
30	225
35	280
40	340
45	410
50	490
55	570
60	660
65	760
70	865

Source: R-H Grade Crossing Handbook Table 36 (pp. 132-133)

Notes:

All calculated distances are rounded up to the next higher 5-foot increment.

Distances indicated are for 65-ft double bottom semi-tractor trailers on dry level pavements.

Stopping Sight Distance is to be measured on each roadway approach to crossing from stop bar.

Diagnostic Review

(MAR – Silver Street, DOT # 481538V)

4/8/2016

Please print:

[illegible]

This foregoing document was electronically filed with the Public Utilities

Commission of Ohio Docketing Information System on

3/7/2019 11:35:31 AM

in

Case No(s). 19-0582-RR-FED

Summary: Application In the Matter of a Request for Upgrades to the Active Warning Devices at the Norfolk Southern Railway Crossing, Silver Street DOT#481-538V, in Marion County, Ohio. electronically filed by Mrs. Jill A Henry on behalf of PUCO/Rail Division