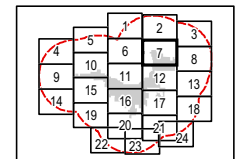


Republic Wind Farm

Adams, Pleasant, Reed, Scipio, and Thompson Townships, Seneca County, and York Township, Sandusky County, Ohio

Figure 08-7: Cultural Resources

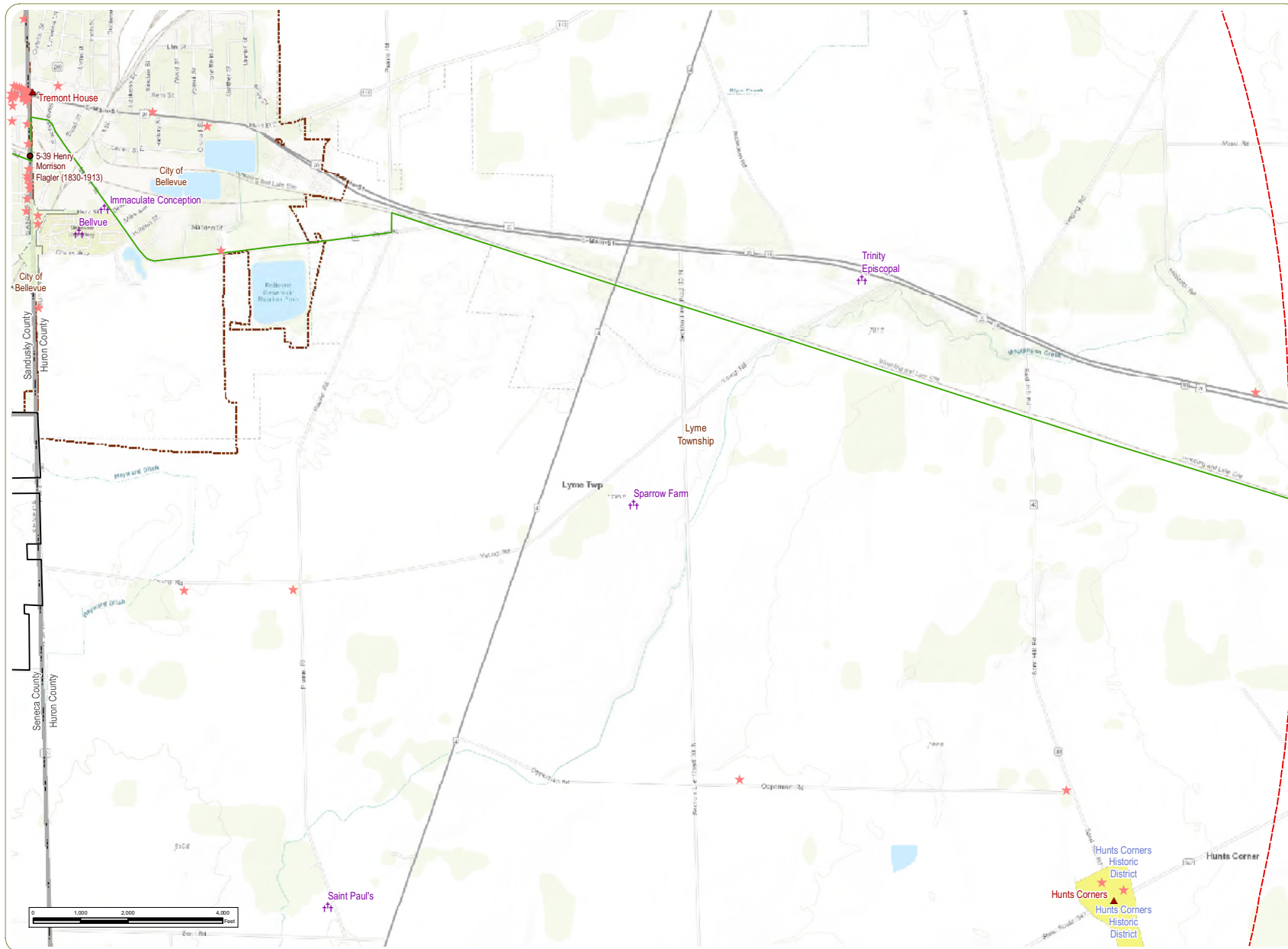
- State Historic Marker
- ★ OHI Historic Structure
- ✙ Cemetery
- ▲ NRHP-Listed Site
- Bike Route
- Previously Surveyed Historic Area
- NRHP-Eligible Site
- Project Boundary
- 5 Mile Study Area
- City/Village Boundary
- Township Boundary
- County Boundary



Sheet 7 of 24

Notes: 1. Basemap/ESRI ArcGIS Online "World Topographic Map" map service. 2. This map was generated in ArcMap on December 13, 2018. 3. This is a color graphic. Reproduction in grayscale may misrepresent the data. 4. Archaeological sites were evaluated for this project, but not displayed on this figure due to confidentiality. 5. Facility components were provided by Apex and cultural resources data are provided by EDR. 6. Map Scale 1:24,000.



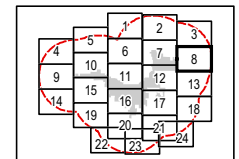


Republic Wind Farm

Adams, Pleasant, Reed, Scipio, and Thompson Townships, Seneca County, and York Township, Sandusky County, Ohio

Figure 08-7: Cultural Resources

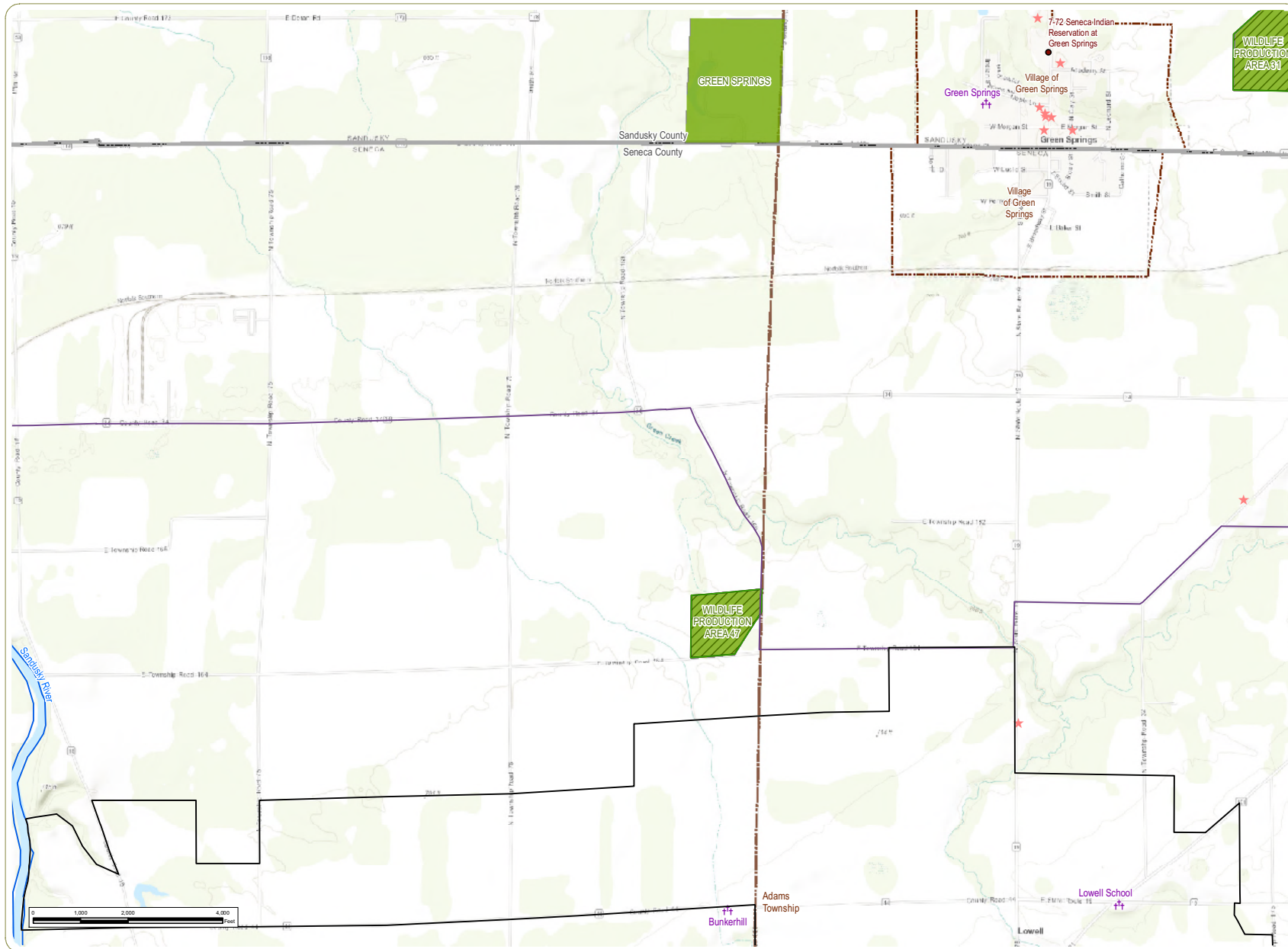
- State Historic Marker
- ★ OHI Historic Structure
- ✙ Cemetery
- ▲ NRHP-Listed Site
- Bike Route
- NRHP-Listed Area
- Previously Surveyed Historic Area
- Project Boundary
- 5 Mile Study Area
- City/Village Boundary
- Township Boundary
- County Boundary



Sheet 8 of 24

Notes: 1. Basemap/ESRI ArcGIS Online "World Topographic Map" map service. 2. This map was generated in ArcMap on December 13, 2018. 3. This is a color graphic. Reproduction in grayscale may misrepresent the data. 4. Archaeological sites were evaluated for this project, but not displayed on this figure due to confidentiality. 5. Facility components were provided by Apex and cultural resources data are provided by EDR. 6. Map Scale 1:24,000.



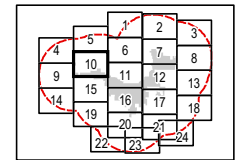


Republic Wind Farm

Adams, Pleasant, Reed, Scipio, and Thompson Townships, Seneca County, and York Township, Sandusky County, Ohio

Figure 08-7: Cultural Resources

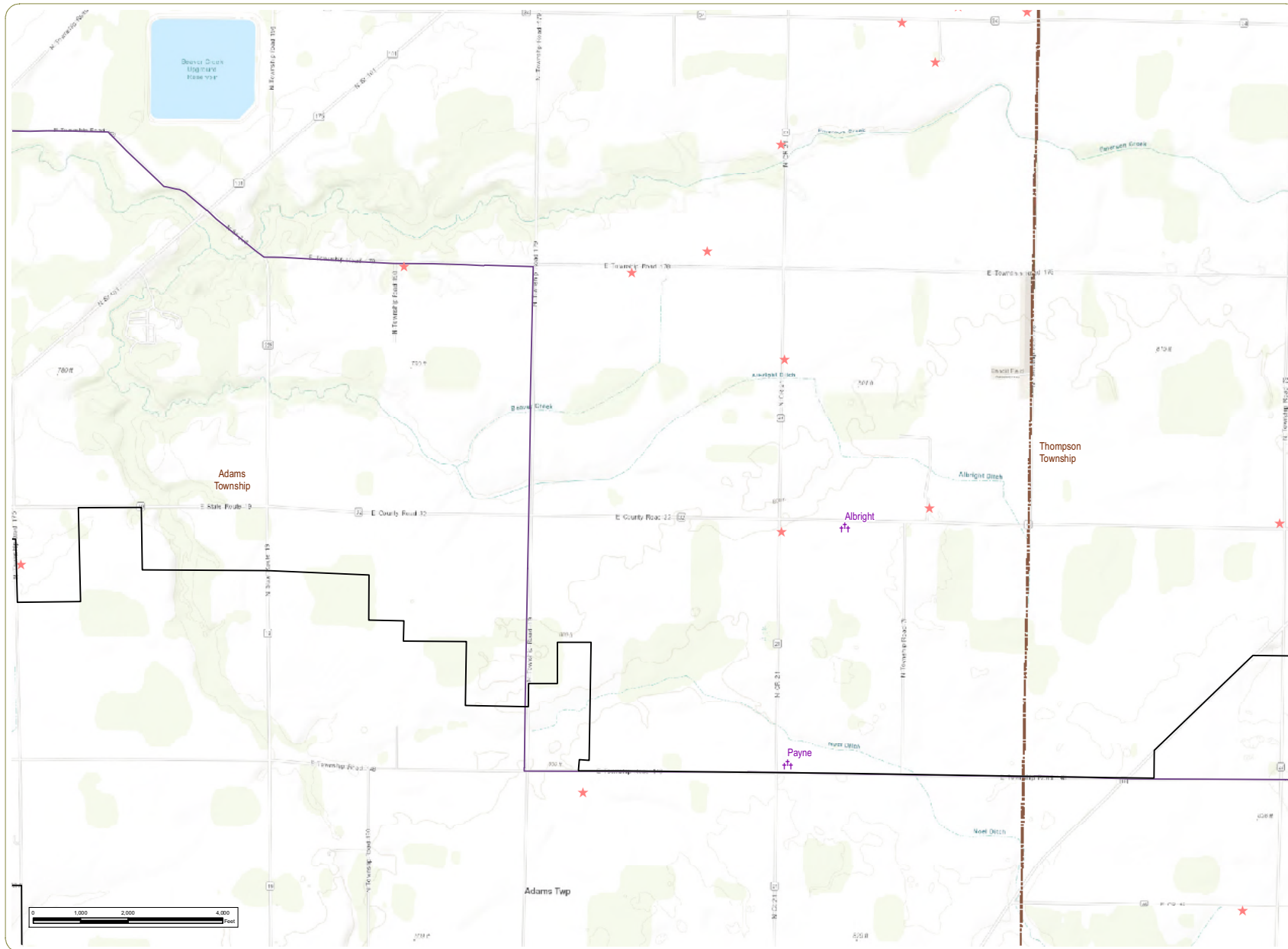
- State Historic Marker
- ★ OHI Historic Structure
- ✚ Cemetery
- Buckeye Trail
- Wild or Scenic River
- ▨ State WMA
- ▨ ODNR Land
- ▭ Project Boundary
- ▭ 5 Mile Study Area
- ▭ City/Village Boundary
- ▭ Township Boundary
- ▭ County Boundary



Sheet 10 of 24

Notes: 1. Basemap/ESRI ArcGIS Online "World Topographic Map" map service. 2. This map was generated in ArcMap on December 13, 2018. 3. This is a color graphic. Reproduction in grayscale may misrepresent the data. 4. Archaeological sites were evaluated for this project, but not displayed on this figure due to confidentiality. 5. Facility components were provided by Apex and cultural resources data are provided by EDR. 6. Map Scale 1:24,000.



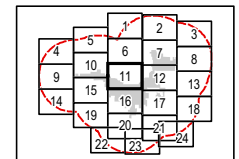


Republic Wind Farm

Adams, Pleasant, Reed, Scipio, and Thompson Townships, Seneca County, and York Township, Sandusky County, Ohio

Figure 08-7: Cultural Resources

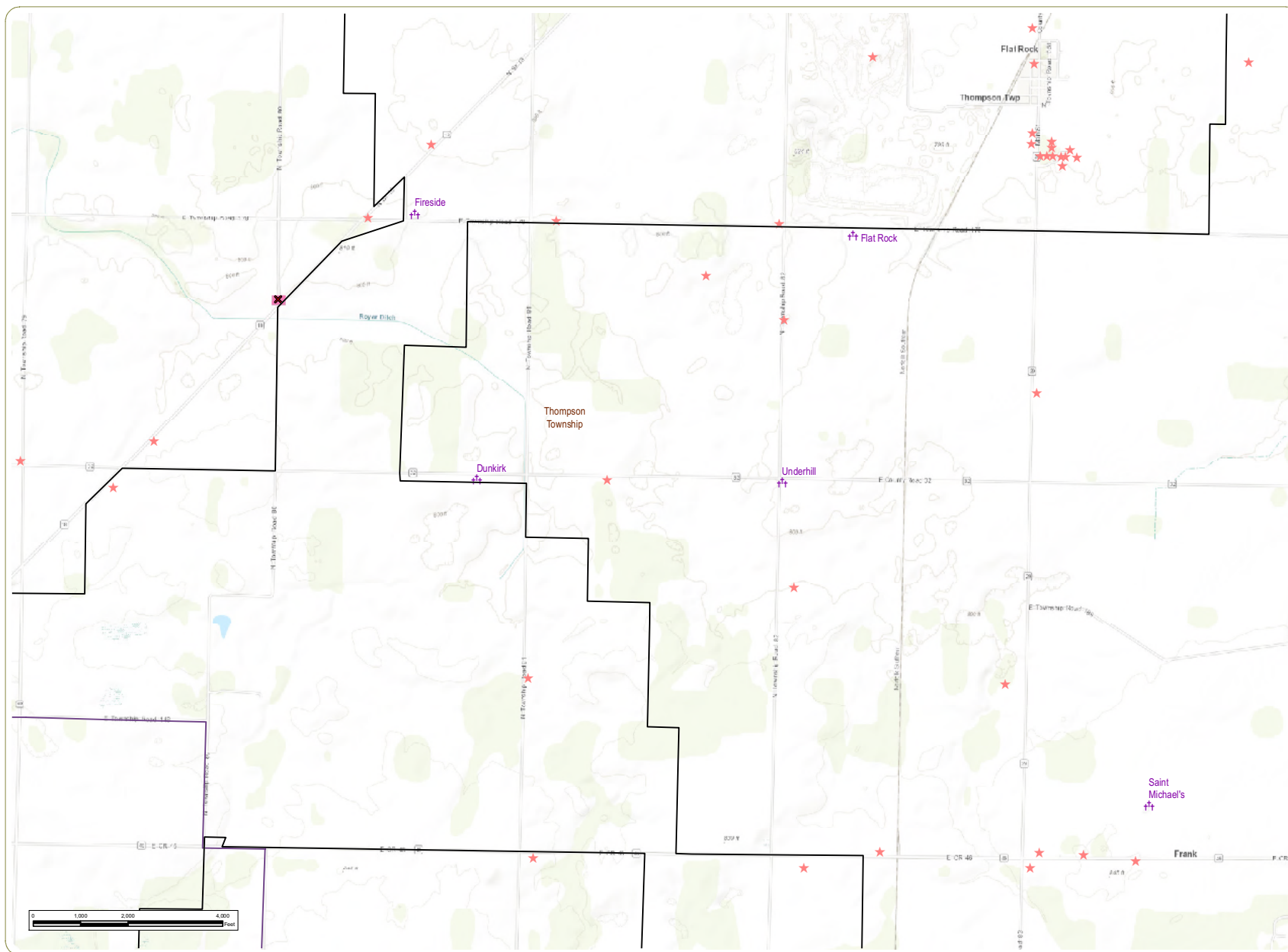
- ★ OH Historic Structure
- ✚ Cemetery
- Buckeye Trail
- ▭ Project Boundary
- ▭ 5 Mile Study Area
- ▭ Township Boundary
- ▭ County Boundary



Sheet 11 of 24

Notes: 1. Basemap/ESRI ArcGIS Online "World Topographic Map" map service. 2. This map was generated in ArcMap on December 13, 2018. 3. This is a color graphic. Reproduction in grayscale may misrepresent the data. 4. Archaeological sites were evaluated for this project, but not displayed on this figure due to confidentiality. 5. Facility components were provided by Apex and cultural resources data are provided by EDR. 6. Map Scale 1:24,000.



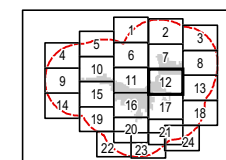


Republic Wind Farm

Adams, Pleasant, Reed, Scipio, and Thompson Townships, Seneca County, and York Township, Sandusky County, Ohio

Figure 08-7: Cultural Resources

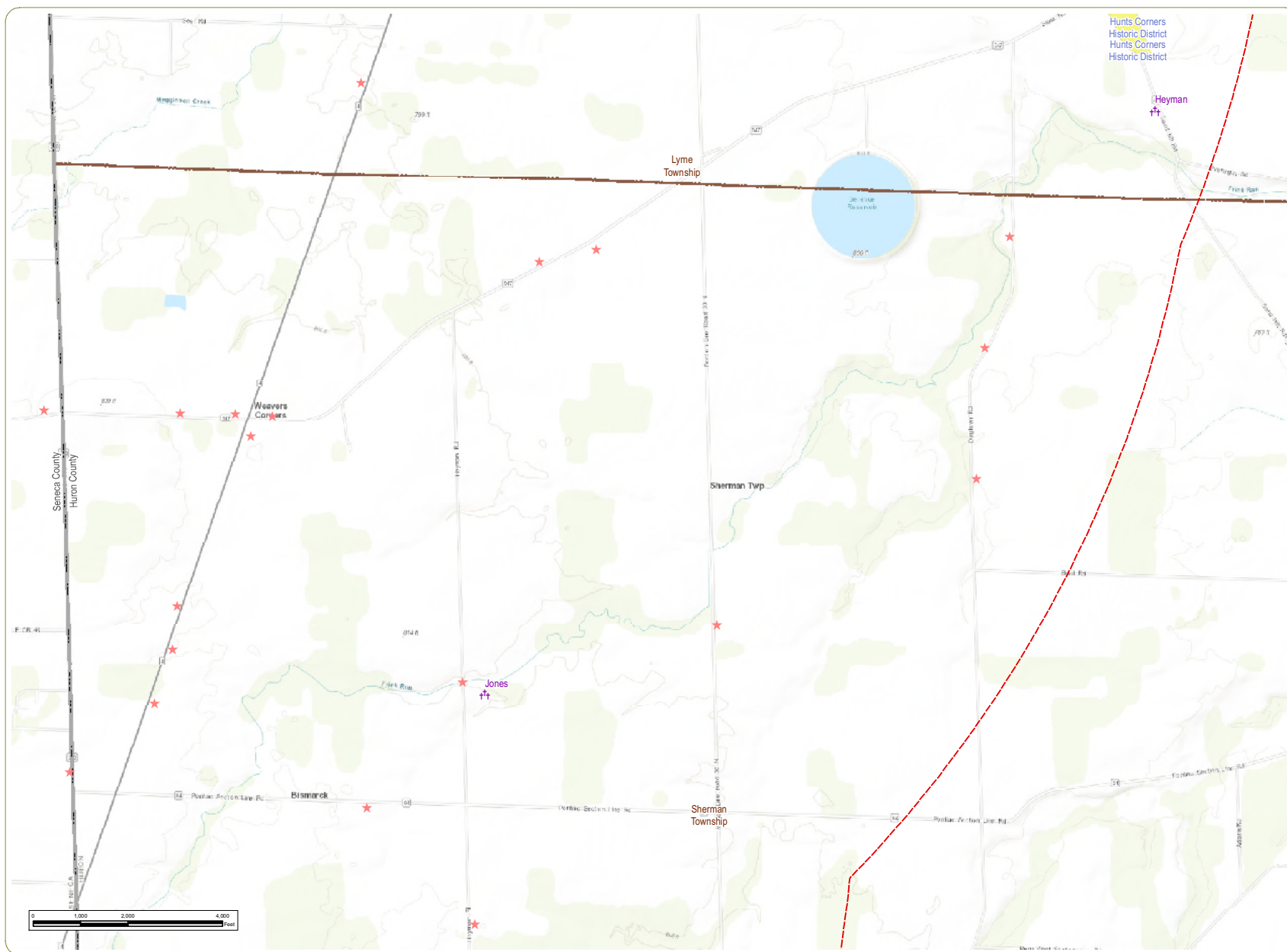
- ★ OHI Historic Structure
- ✚ Cemetery
- ✕ NRHP-Listed Historic Bridge
- ✕ NRHP-Eligible Historic Bridge
- Buckeye Trail
- NRHP-Eligible Site
- Project Boundary
- 5 Mile Study Area
- Township Boundary
- County Boundary



Sheet 12 of 24

Notes: 1. Basemap/ESRI ArcGIS Online "World Topographic Map" map service. 2. This map was generated in ArcMap on December 13, 2018. 3. This is a color graphic. Reproduction in grayscale may misrepresent the data. 4. Archaeological sites were evaluated for this project, but not displayed on this figure due to confidentiality. 5. Facility components were provided by Apex and cultural resources data are provided by EDR. 6. Map Scale 1:24,000.



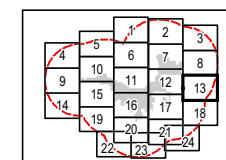


Republic Wind Farm

Adams, Pleasant, Reed, Scipio, and Thompson Townships, Seneca County, and York Township, Sandusky County, Ohio

Figure 08-7: Cultural Resources

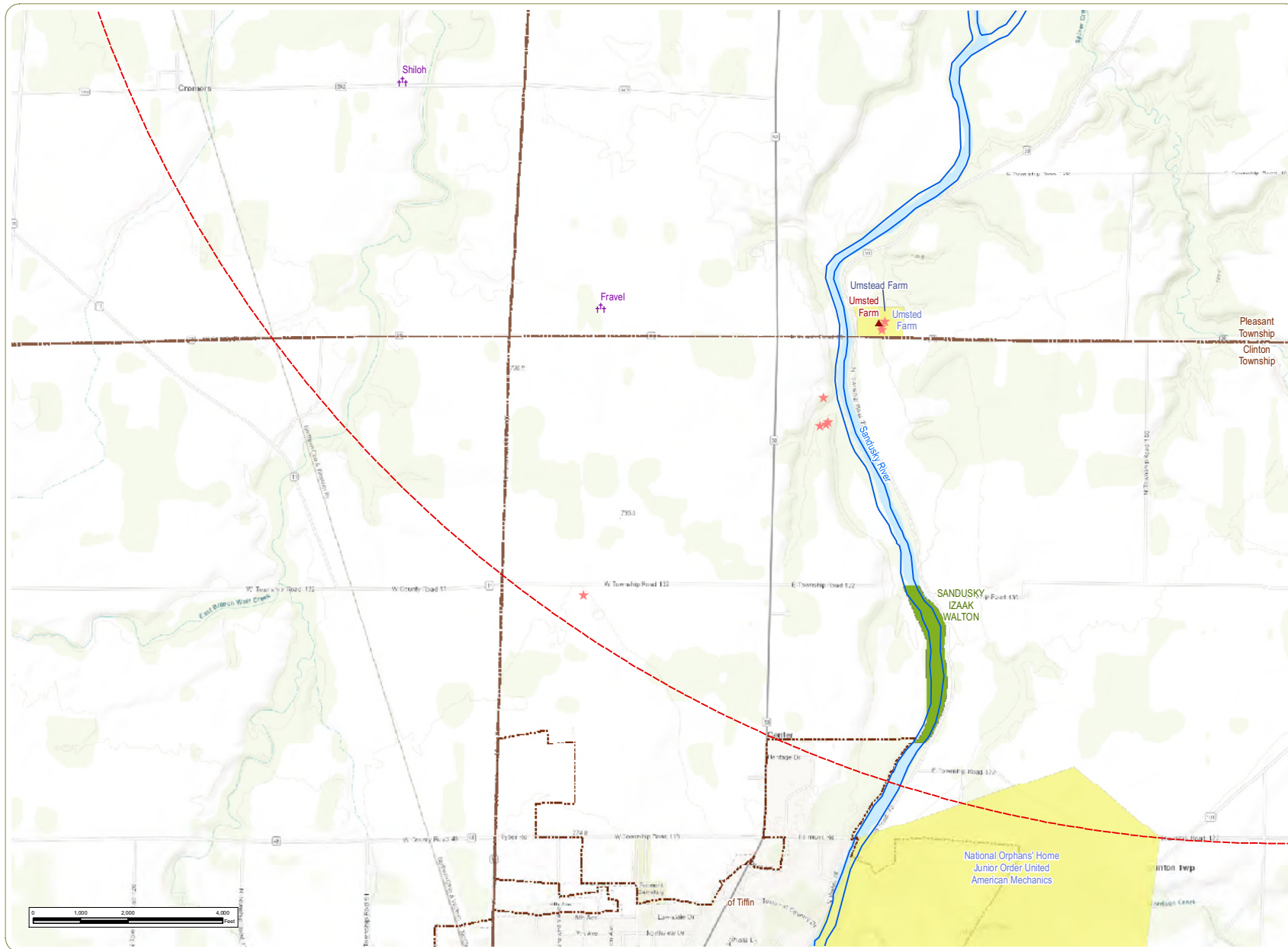
- ★ OH Historic Structure
- ✚ Cemetery
- NRHP-Listed Area
- 5 Mile Study Area
- Township Boundary
- County Boundary



Sheet 13 of 24

Notes: 1. Basemap/ESRI ArcGIS Online "World Topographic Map" map service. 2. This map was generated in ArcMap on December 13, 2018. 3. This is a color graphic. Reproduction in grayscale may misrepresent the data. 4. Archaeological sites were evaluated for this project, but not displayed on this figure due to confidentiality. 5. Facility components were provided by Apex and cultural resources data are provided by EDR. 6. Map Scale 1:24,000.



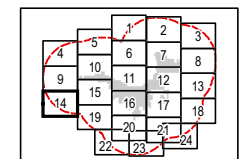


Republic Wind Farm

Adams, Pleasant, Reed, Scipio, and Thompson Townships, Seneca County, and York Township, Sandusky County, Ohio

Figure 08-7: Cultural Resources

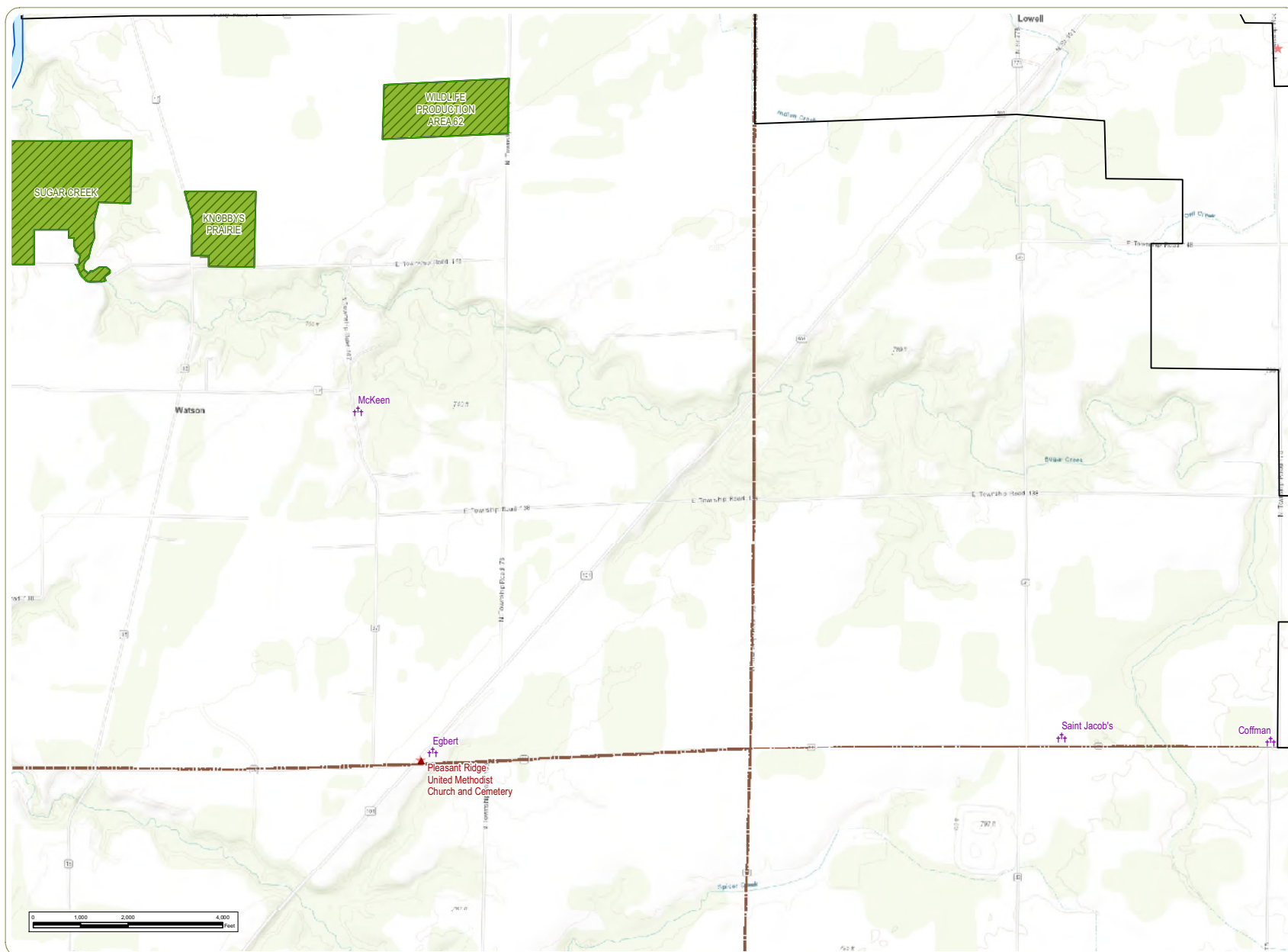
- ★ OH Historic Structure
- ✚ Cemetery
- ▲ NRHP-Listed Site
- Wild or Scenic River
- NRHP-Listed Area
- Local Park
- ODN Land
- 5 Mile Study Area
- City/Village Boundary
- Township Boundary
- County Boundary



Sheet 14 of 24

Notes: 1. Basemap/ESRI ArcGIS Online "World Topographic Map" map service. 2. This map was generated in ArcMap on December 13, 2018. 3. This is a color graphic. Reproduction in grayscale may misrepresent the data. 4. Archaeological sites were evaluated for this project, but not displayed on this figure due to confidentiality. 5. Facility components were provided by Apex and cultural resources data are provided by EDR. 6. Map Scale 1:24,000.



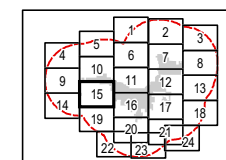


Republic Wind Farm

Adams, Pleasant, Reed, Scipio, and Thompson Townships, Seneca County, and York Township, Sandusky County, Ohio

Figure 08-7: Cultural Resources

- ★ OHI Historic Structure
- ✚ Cemetery
- ▲ NRHP-Listed Site
- Wild or Scenic River
- ▨ State WMA
- ▨ ODN Land
- ▭ Project Boundary
- ▭ 5 Mile Study Area
- ▭ Township Boundary
- ▭ County Boundary

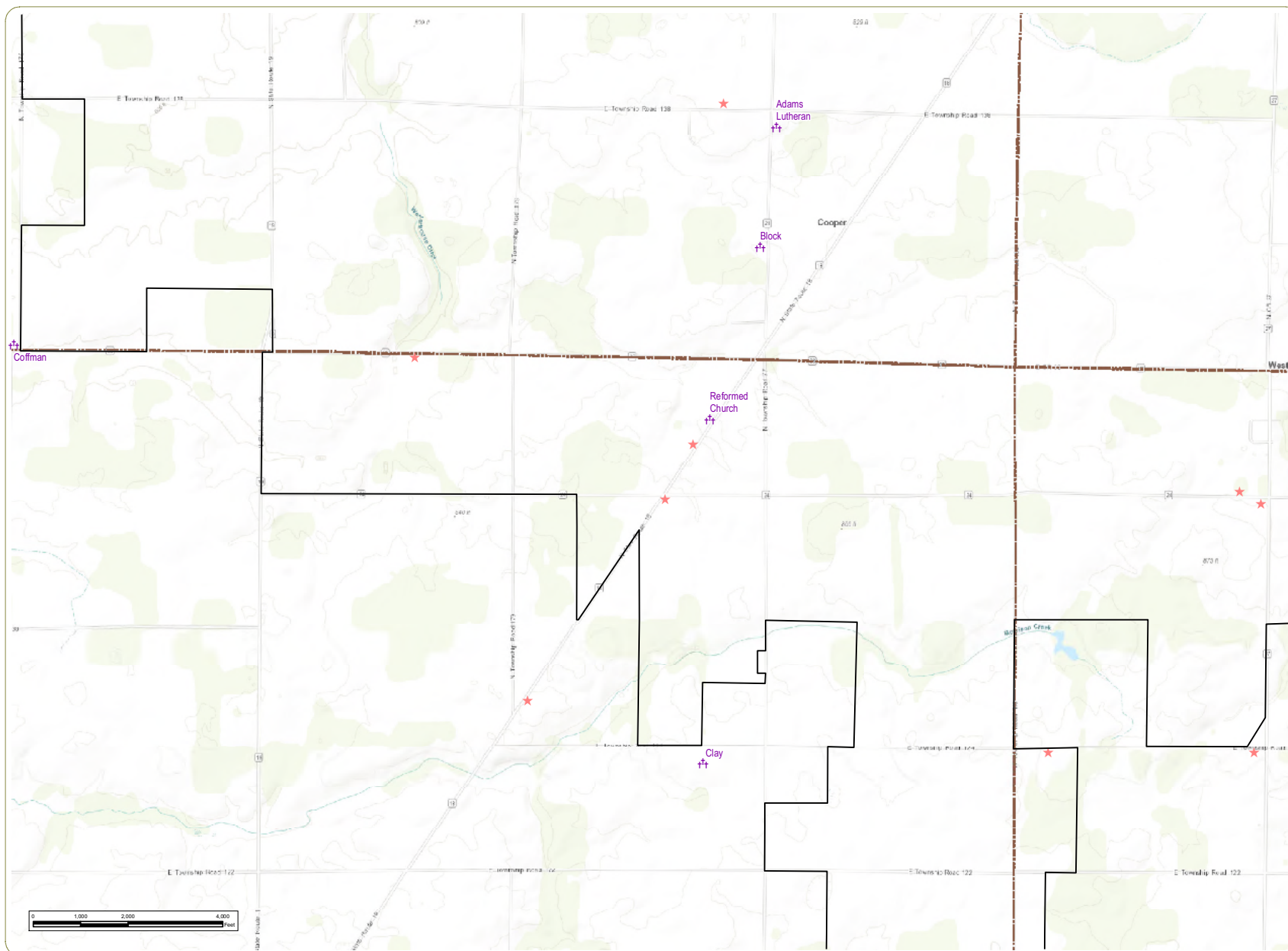


Sheet 15 of 24

Notes: 1. Basemap/ESRI ArcGIS Online "World Topographic Map" map service. 2. This map was generated in ArcMap on December 13, 2018. 3. This is a color graphic. Reproduction in grayscale may misrepresent the data. 4. Archaeological sites were evaluated for this project, but not displayed on this figure due to confidentiality. 5. Facility components were provided by Apex and cultural resources data are provided by EDR. 6. Map Scale 1:24,000.



www.edrdpc.com

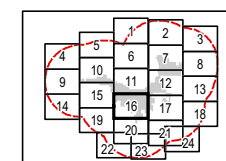


Republic Wind Farm

Adams, Pleasant, Reed, Scipio, and Thompson Townships, Seneca County, and York Township, Sandusky County, Ohio

Figure 08-7: Cultural Resources

- ★ OH Historic Structure
- ✝ Cemetery
- ▭ Project Boundary
- ▭ 5 Mile Study Area
- ▭ Township Boundary
- ▭ County Boundary

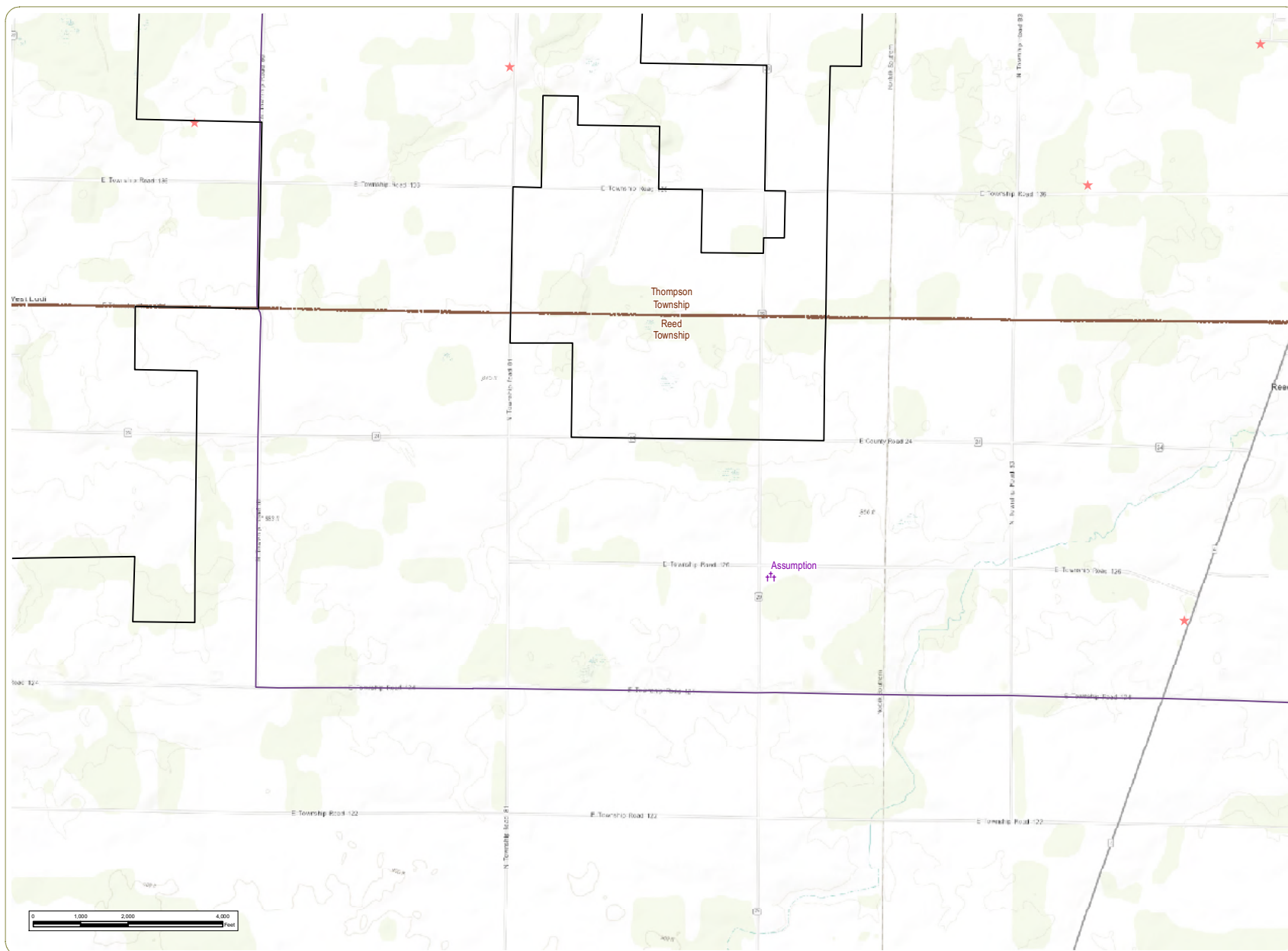


Sheet 16 of 24

Notes: 1. Basemap/ESRI ArcGIS Online "World Topographic Map" map service. 2. This map was generated in ArcMap on December 13, 2018. 3. This is a color graphic. Reproduction in grayscale may misrepresent the data. 4. Archaeological sites were evaluated for this project, but not displayed on this figure due to confidentiality. 5. Facility components were provided by Apex and cultural resources data are provided by EDR. 6. Map Scale 1:24,000.



www.edrdpc.com

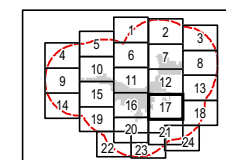


Republic Wind Farm

Adams, Pleasant, Reed, Scipio, and Thompson Townships, Seneca County, and York Township, Sandusky County, Ohio

Figure 08-7: Cultural Resources

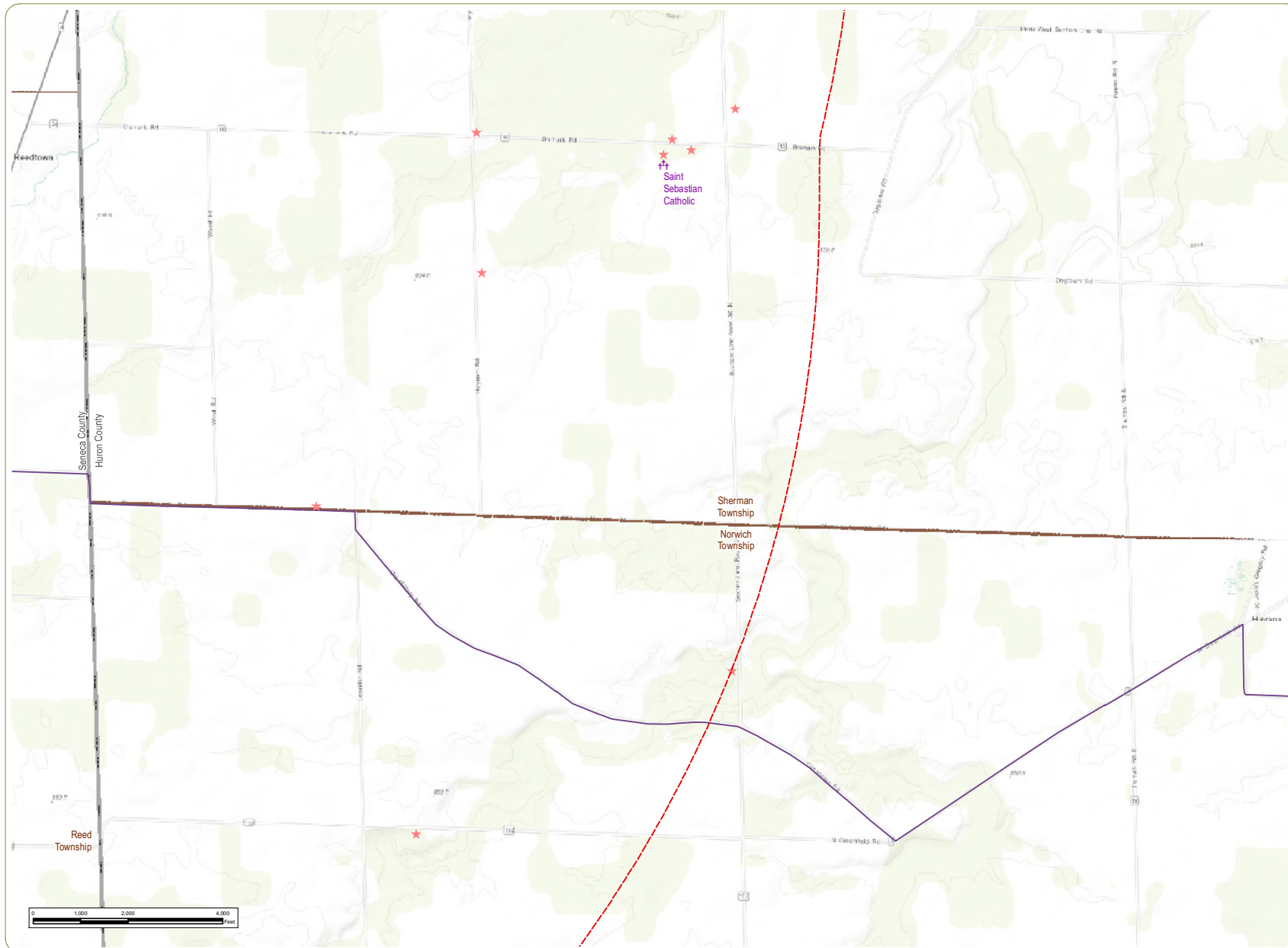
- ★ OHI Historic Structure
- ✚ Cemetery
- Buckeye Trail
- ▭ Project Boundary
- ▭ 5 Mile Study Area
- ▭ Township Boundary
- ▭ County Boundary



Sheet 17 of 24

Notes: 1. Basemap: ESRI ArcGIS Online "World Topographic Map" map service. 2. This map was generated in ArcMap on December 13, 2018. 3. This is a color graphic. Reproduction in grayscale may misrepresent the data. 4. Archaeological sites were evaluated for this project, but not displayed on this figure due to confidentiality. 5. Facility components were provided by Apex and cultural resources data are provided by EDR. 6. Map Scale 1:24,000.



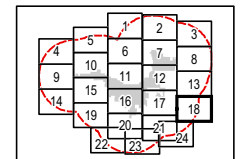


Republic Wind Farm

Adams, Pleasant, Reed, Scipio, and Thompson Townships, Seneca County, and York Township, Sandusky County, Ohio

Figure 08-7: Cultural Resources

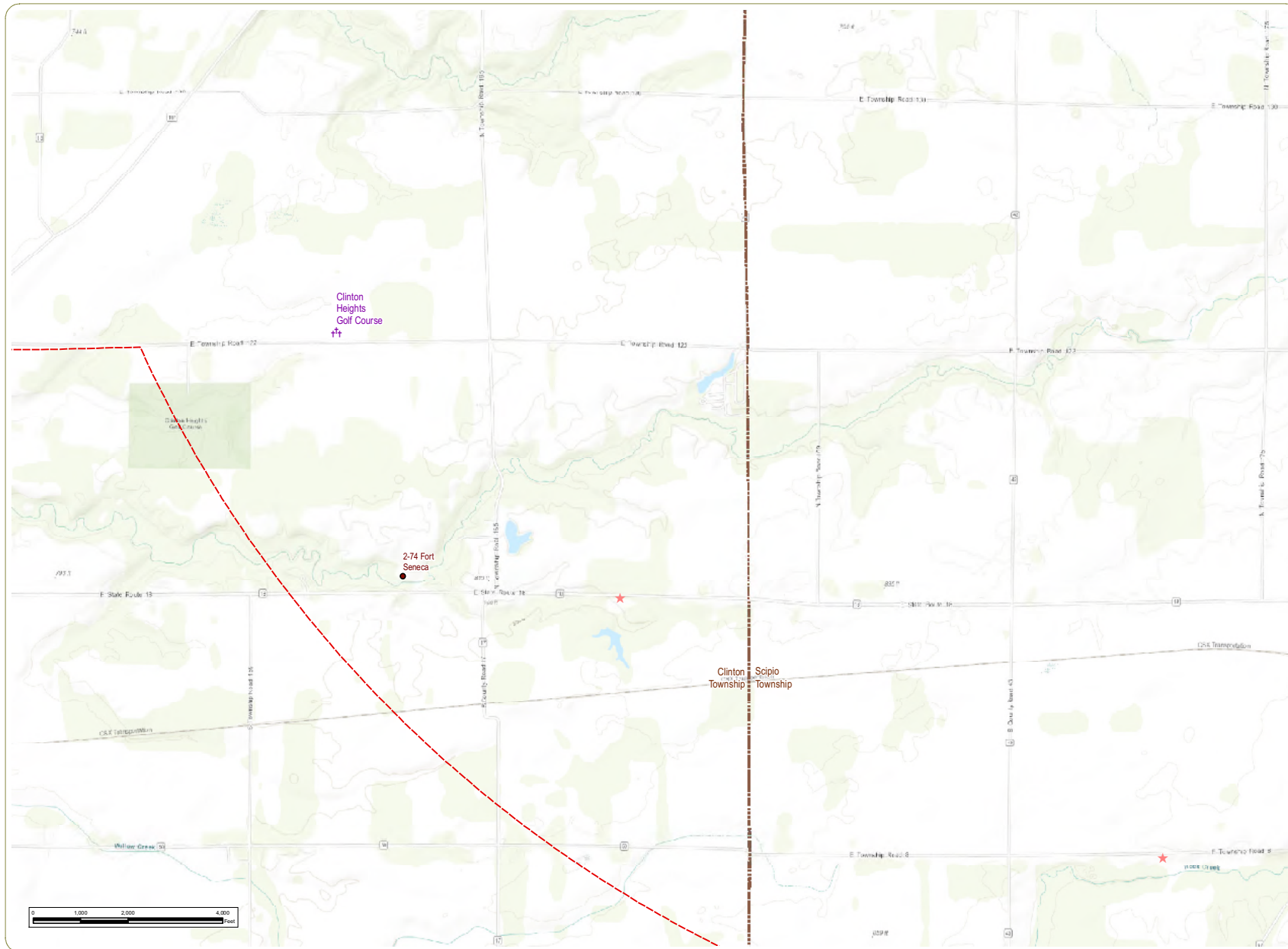
- ★ OHI Historic Structure
- ✦ Cemetery
- Buckeye Trail
- - - 5 Mile Study Area
- - - Township Boundary
- County Boundary



Sheet 18 of 24

Notes: 1. Basemap/ESRI ArcGIS Online "World Topographic Map" map service. 2. This map was generated in ArcMap on December 13, 2018. 3. This is a color graphic. Reproduction in grayscale may misrepresent the data. 4. Archaeological sites were evaluated for this project, but not displayed on this figure due to confidentiality. 5. Facility components were provided by Apex and cultural resources data are provided by EDR. 6. Map Scale 1:24,000.



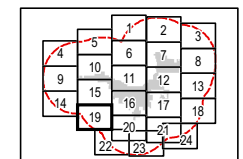


Republic Wind Farm

Adams, Pleasant, Reed, Scipio, and Thompson Townships, Seneca County, and York Township, Sandusky County, Ohio

Figure 08-7: Cultural Resources

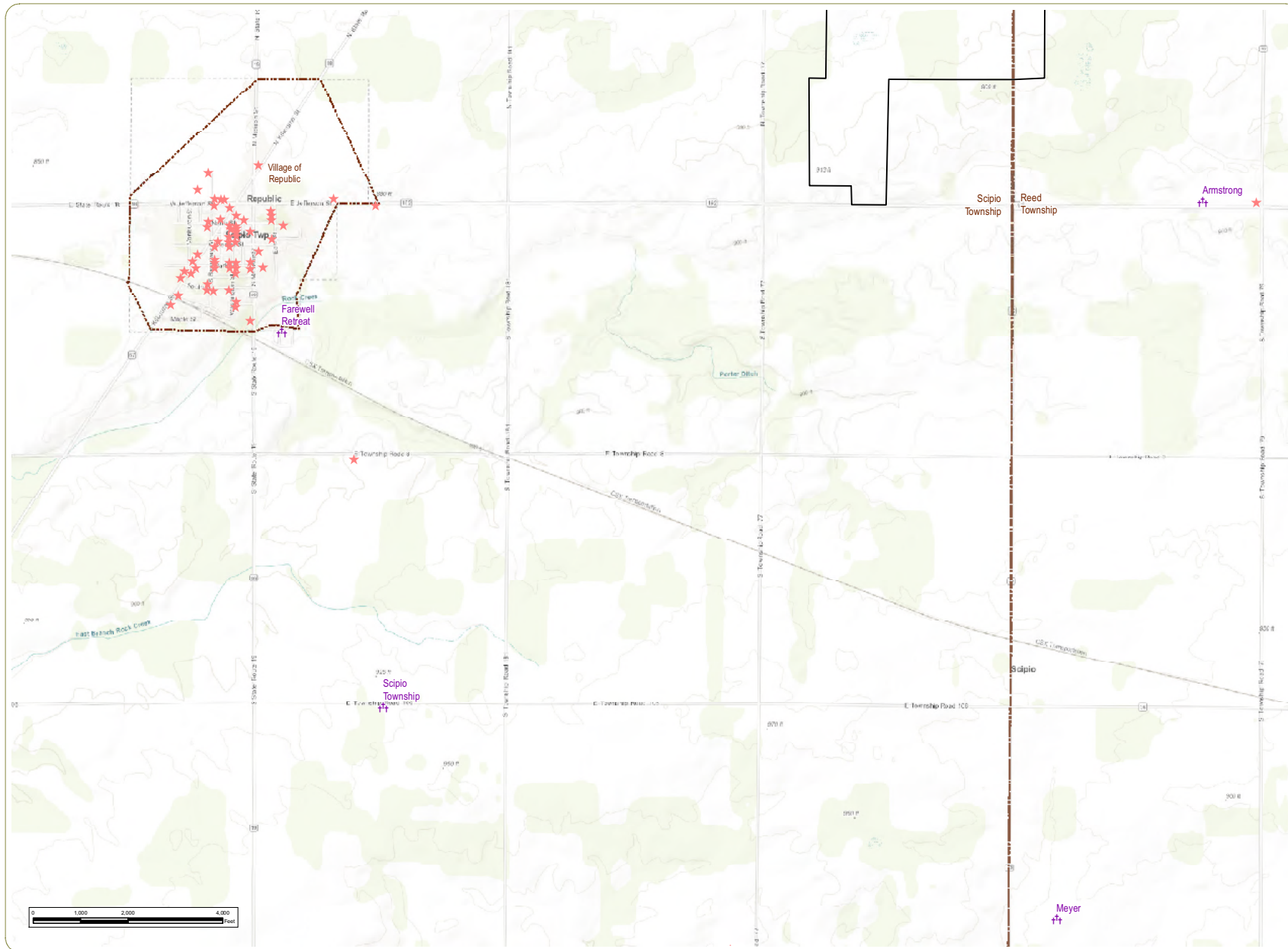
- State Historic Marker
- ★ OHI Historic Structure
- ✚ Cemetery
- ▭ 5 Mile Study Area
- ▭ Township Boundary
- ▭ County Boundary



Sheet 19 of 24

Notes: 1. Basemap/ESRI ArcGIS Online "World Topographic Map" map service. 2. This map was generated in ArcMap on December 13, 2018. 3. This is a color graphic. Reproduction in grayscale may misrepresent the data. 4. Archaeological sites were evaluated for this project, but not displayed on this figure due to confidentiality. 5. Facility components were provided by Apex and cultural resources data are provided by EDR. 6. Map Scale 1:24,000.



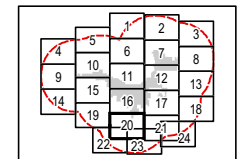


Republic Wind Farm

Adams, Pleasant, Reed, Scipio, and Thompson Townships, Seneca County, and York Township, Sandusky County, Ohio

Figure 08-7: Cultural Resources

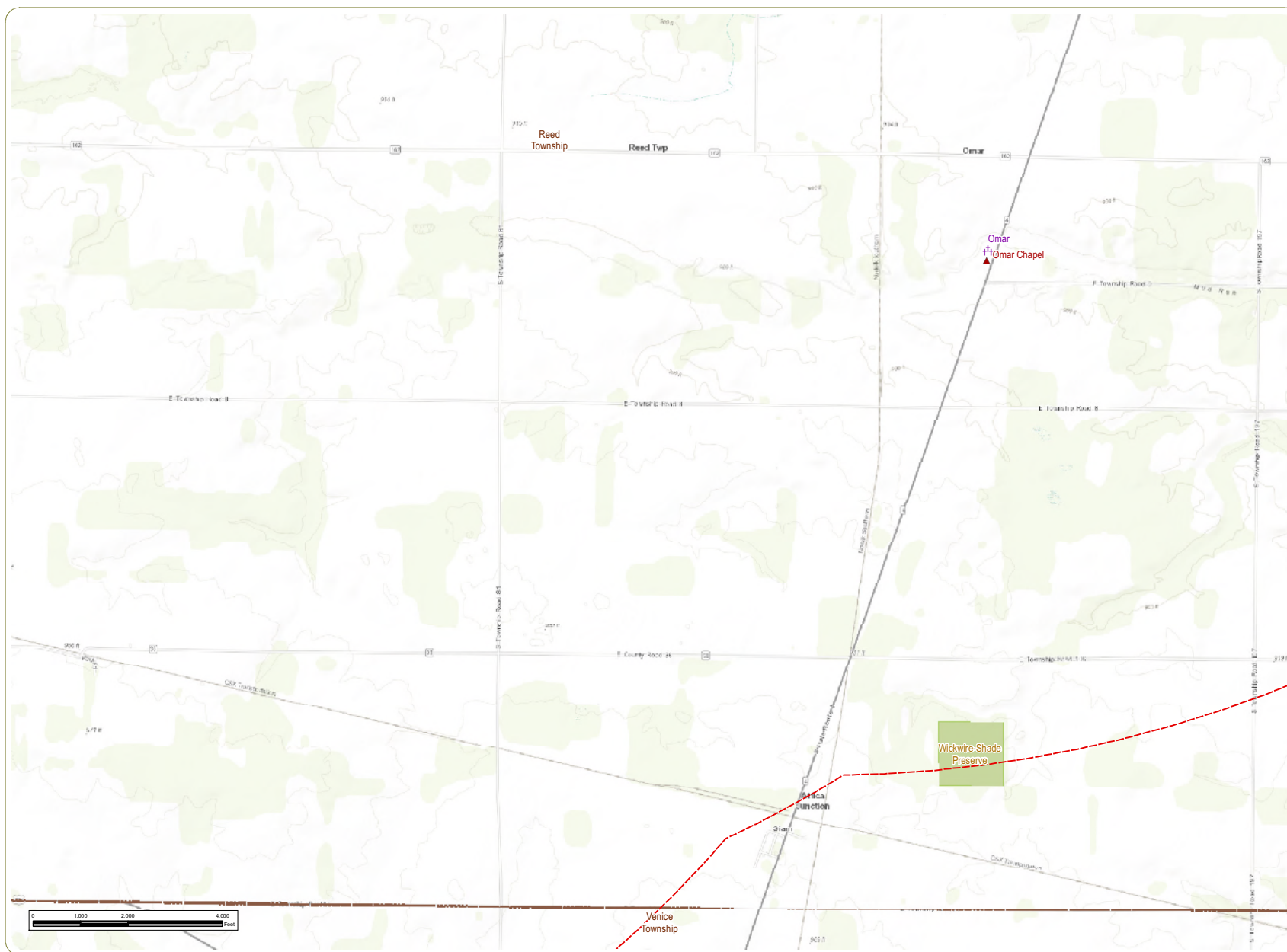
- ★ OHI Historic Structure
- ✝ Cemetery
- ▭ Project Boundary
- ▭ 5 Mile Study Area
- ▭ City/Village Boundary
- ▭ Township Boundary
- ▭ County Boundary



Sheet 20 of 24

Notes: 1. Basemap/ESRI ArcGIS Online "World Topographic Map" map service. 2. This map was generated in ArcMap on December 13, 2018. 3. This is a color graphic. Reproduction in grayscale may misrepresent the data. 4. Archaeological sites were evaluated for this project, but not displayed on this figure due to confidentiality. 5. Facility components were provided by Apex and cultural resources data are provided by EDR. 6. Map Scale 1:24,000.



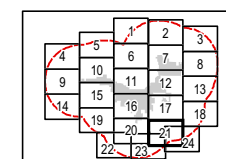


Republic Wind Farm

Adams, Pleasant, Reed, Scipio, and Thompson Townships, Seneca County, and York Township, Sandusky County, Ohio

Figure 08-7: Cultural Resources

- Cemetery
- NRHP-Listed Site
- Local Park
- 5 Mile Study Area
- Township Boundary
- County Boundary

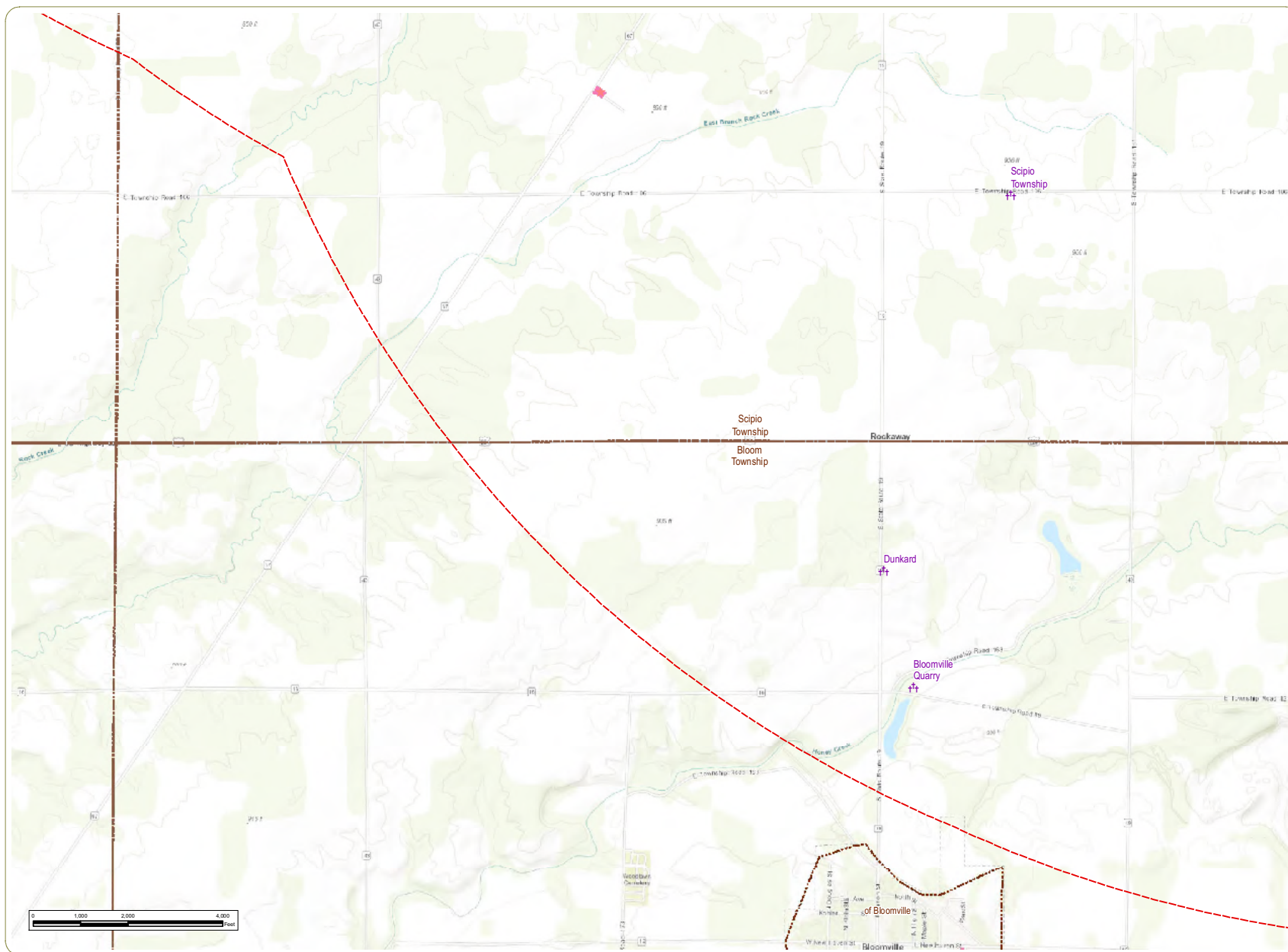


Sheet 21 of 24

Notes: 1. Basemap:ESRI ArcGIS Online "World Topographic Map" map service. 2. This map was generated in ArcMap on December 13, 2018. 3. This is a color graphic. Reproduction in grayscale may misrepresent the data. 4. Archaeological sites were evaluated for this project, but not displayed on this figure due to confidentiality. 5. Facility components were provided by Apex and cultural resources data are provided by EDR. 6. Map Scale 1:24,000.



www.edrdpc.com

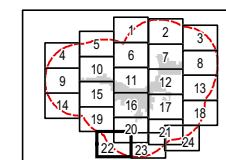


Republic Wind Farm

Adams, Pleasant, Reed, Scipio, and Thompson Townships, Seneca County, and York Township, Sandusky County, Ohio

Figure 08-7: Cultural Resources

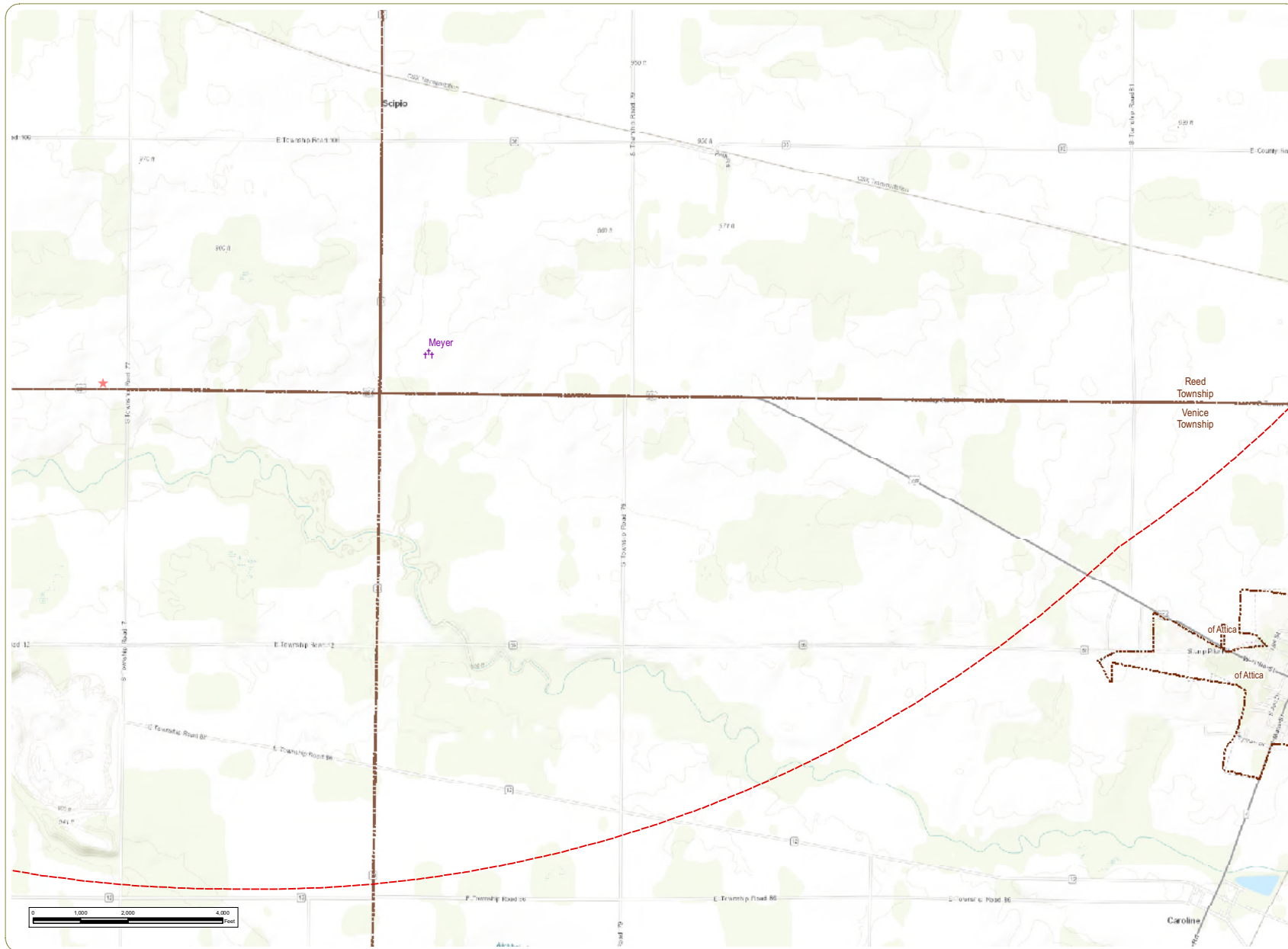
- ★ OHI Historic Structure
- ✚ Cemetery
- NRHP-Eligible Site
- 5 Mile Study Area
- City/Village Boundary
- Township Boundary
- County Boundary



Sheet 22 of 24

Notes: 1. Basemap/ESRI ArcGIS Online "World Topographic Map" map service. 2. This map was generated in ArcMap on December 13, 2018. 3. This is a color graphic. Reproduction in grayscale may misrepresent the data. 4. Archaeological sites were evaluated for this project, but not displayed on this figure due to confidentiality. 5. Facility components were provided by Apex and cultural resources data are provided by EDR. 6. Map Scale 1:24,000.



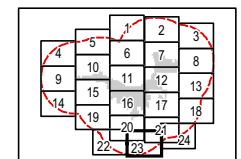


Republic Wind Farm

Adams, Pleasant, Reed, Scipio, and Thompson Townships, Seneca County, and York Township, Sandusky County, Ohio

Figure 08-7: Cultural Resources

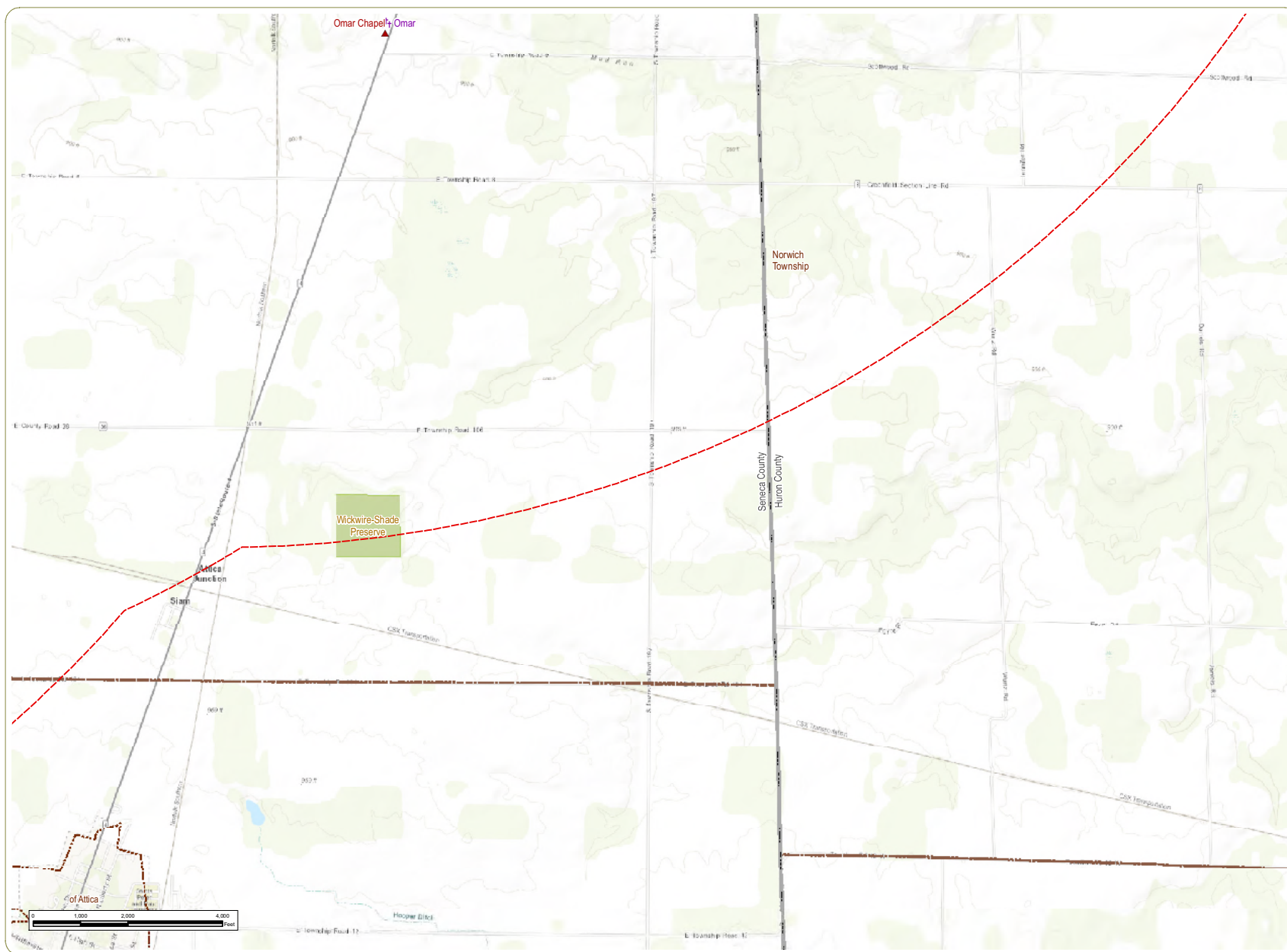
- ★ OHI Historic Structure
- ✚ Cemetery
- 5 Mile Study Area
- City/Village Boundary
- Township Boundary
- County Boundary



Sheet 23 of 24

Notes: 1. Basemap/ESRI ArcGIS Online "World Topographic Map" map service. 2. This map was generated in ArcMap on December 13, 2018. 3. This is a color graphic. Reproduction in grayscale may misrepresent the data. 4. Archaeological sites were evaluated for this project, but not displayed on this figure due to confidentiality. 5. Facility components were provided by Apex and cultural resources data are provided by EDR. 6. Map Scale 1:24,000.



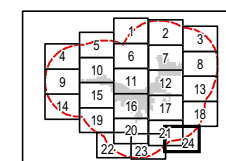


Republic Wind Farm

Adams, Pleasant, Reed, Scipio, and Thompson Townships, Seneca County, and York Township, Sandusky County, Ohio

Figure 08-7: Cultural Resources

- Cemetery
- NRHP-Listed Site
- Local Park
- 5 Mile Study Area
- City/Village Boundary
- Township Boundary
- County Boundary

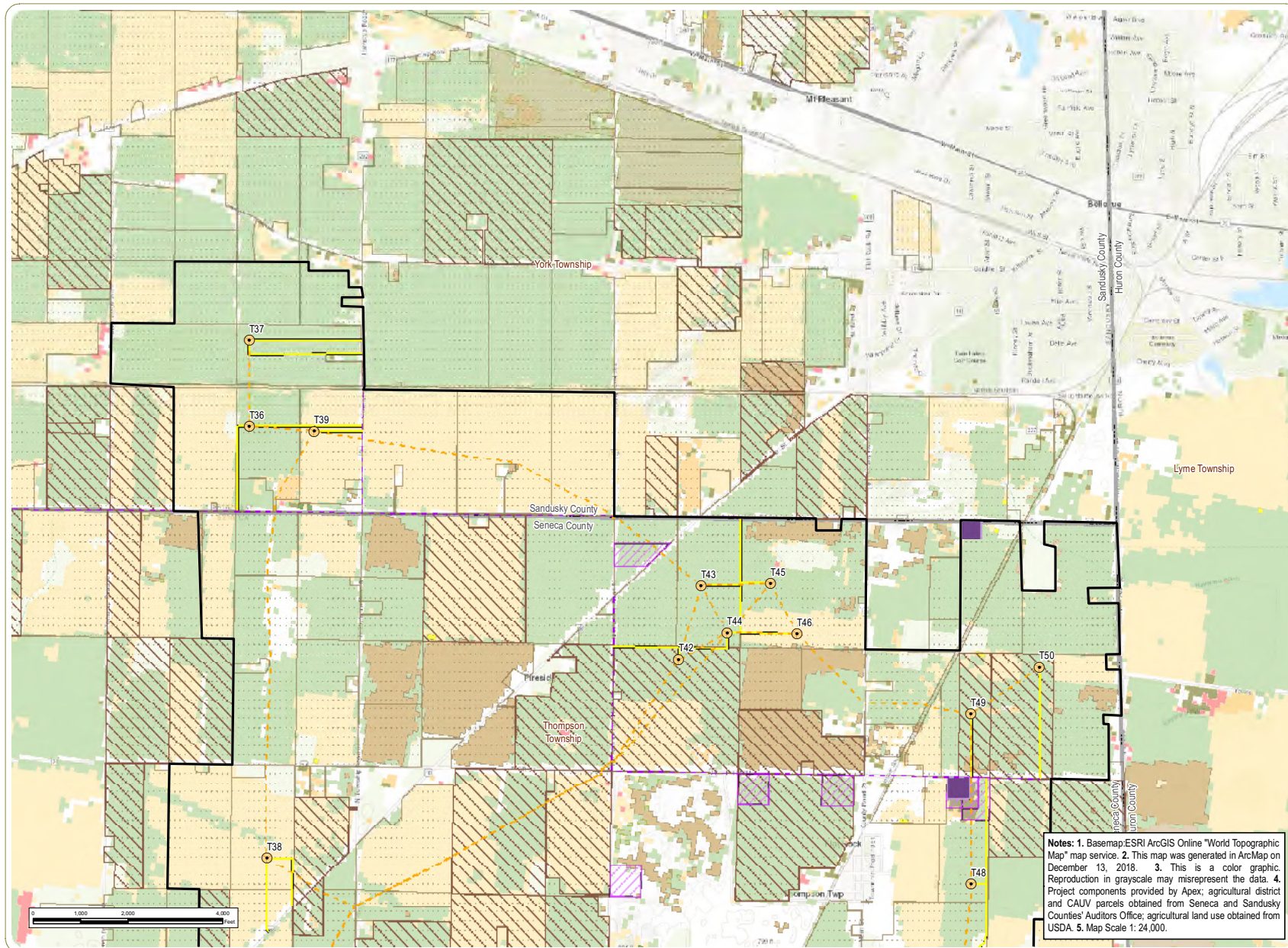


Sheet 24 of 24

Notes: 1. Basemap/ESRI ArcGIS Online "World Topographic Map" map service. 2. This map was generated in ArcMap on December 13, 2018. 3. This is a color graphic. Reproduction in grayscale may misrepresent the data. 4. Archaeological sites were evaluated for this project, but not displayed on this figure due to confidentiality. 5. Facility components were provided by Apex and cultural resources data are provided by EDR. 6. Map Scale 1:24,000.



www.edrdpc.com

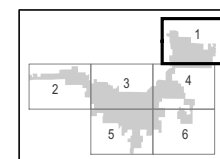


Republic Wind Farm

Adams, Pleasant, Reed, Scipio, and Thompson Townships, Seneca County, and York Township, Sandusky County, Ohio

Figure 08-8: Agricultural Resources

- Wind Turbine
 - Access Road
 - Collection Line
 - Local Delivery Route
 - Laydown Yard
 - O&M Facility
 - Agricultural District
 - CAUV Parcel
 - Project Boundary
 - Township Boundary
 - County Boundary
- Agricultural Land Use**
- Alfalfa
 - Apples
 - Christmas Trees
 - Corn
 - Dbl Crop Winter
 - Wheat/Soybeans
 - Oats
 - Other Hay/Non Alfalfa
 - Pop or Ornamental Corn
 - Soybeans
 - Winter Wheat

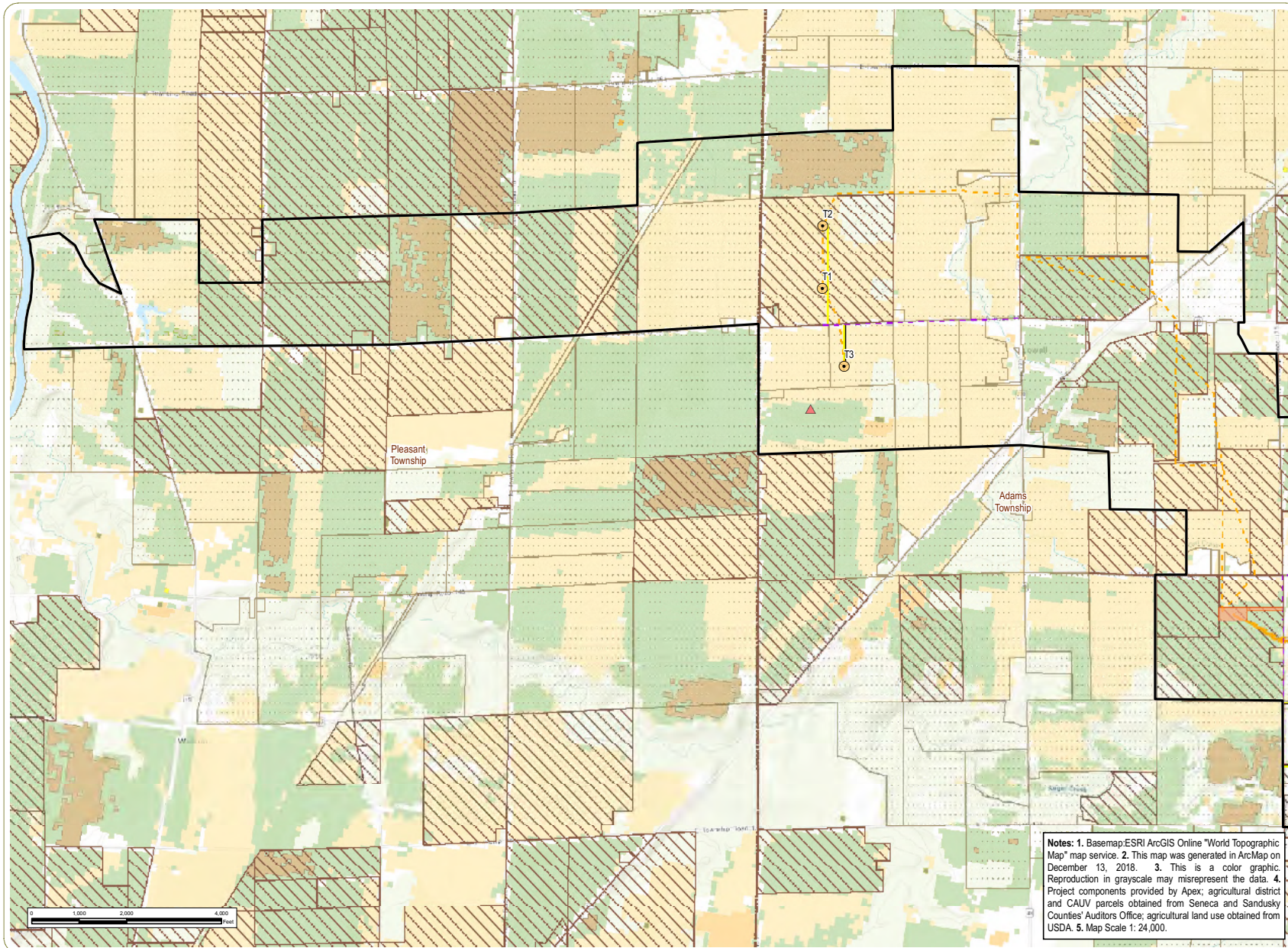


Sheet 1 of 6



www.edrdpc.com

Notes: 1. Basemap: ESRI ArcGIS Online "World Topographic Map" map service. 2. This map was generated in ArcMap on December 13, 2018. 3. This is a color graphic. Reproduction in grayscale may misrepresent the data. 4. Project components provided by Apex; agricultural district and CAUV parcels obtained from Seneca and Sandusky Counties' Auditors Office; agricultural land use obtained from USDA. 5. Map Scale 1: 24,000.

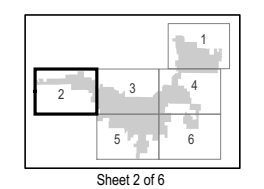


Republic Wind Farm

Adams, Pleasant, Reed, Scipio, and Thompson Townships, Seneca County, and York Township, Sandusky County, Ohio

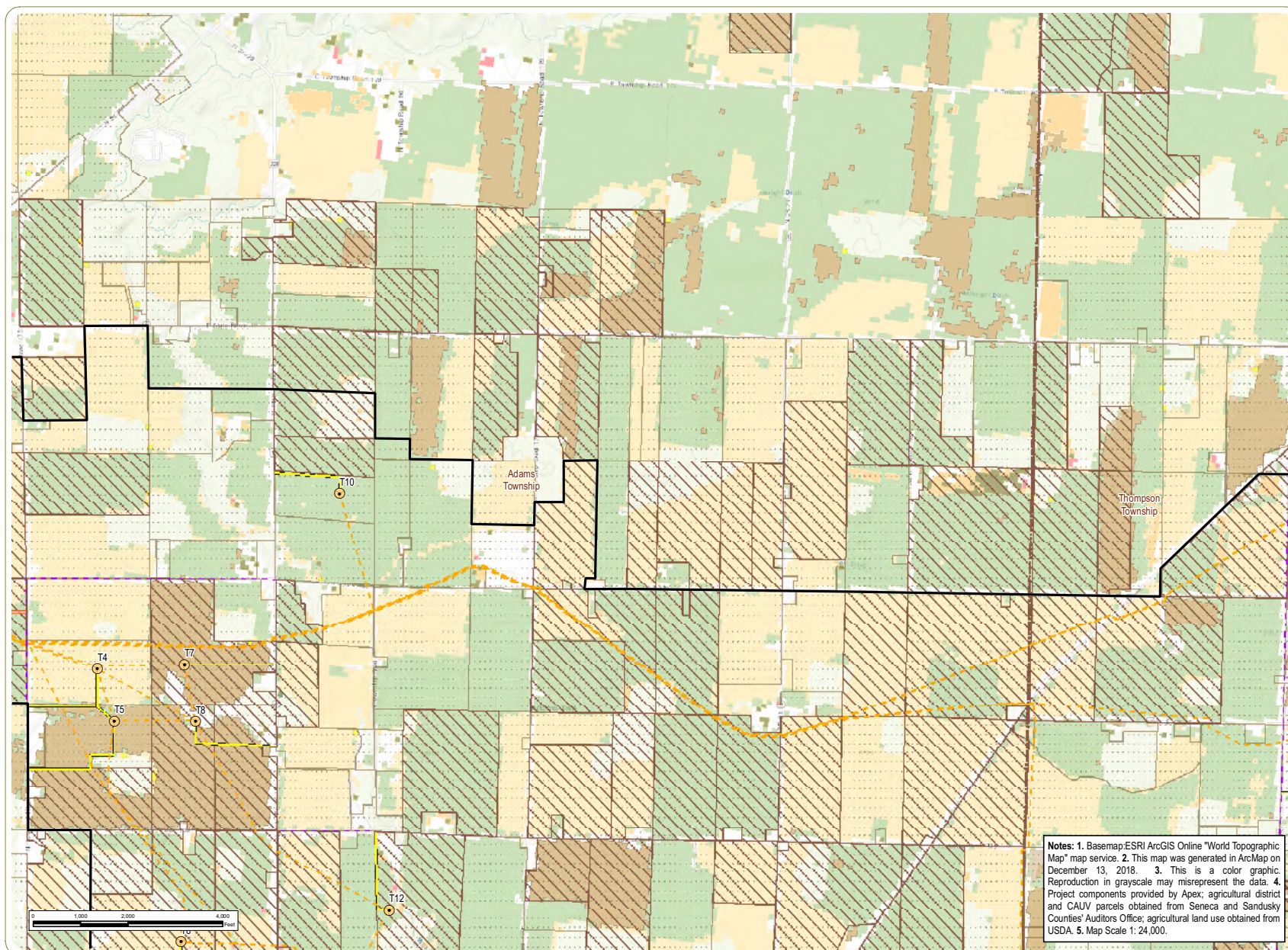
Figure 08-8: Agricultural Resources

- Wind Turbine
- Met Tower
- Access Road
- Collection Line
- Local Delivery Route
- Collection Substation
- Agricultural District
- CAUV Parcel
- Project Boundary
- Township Boundary
- County Boundary
- Agricultural Land Use
 - Alfalfa
 - Apples
 - Corn
 - Dbl Crop Winter Wheat/Soybeans
 - Oats
 - Other Hay/Non Alfalfa
 - Peppers
 - Pop or Ornamental Corn
 - Soybeans
 - Winter Wheat



Notes: 1. Basemap: ESRI ArcGIS Online "World Topographic Map" map service. 2. This map was generated in ArcMap on December 13, 2018. 3. This is a color graphic. Reproduction in grayscale may misrepresent the data. 4. Project components provided by Apex; agricultural district and CAUV parcels obtained from Seneca and Sandusky Counties' Auditors Office; agricultural land use obtained from USDA. 5. Map Scale 1: 24,000.



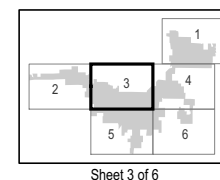


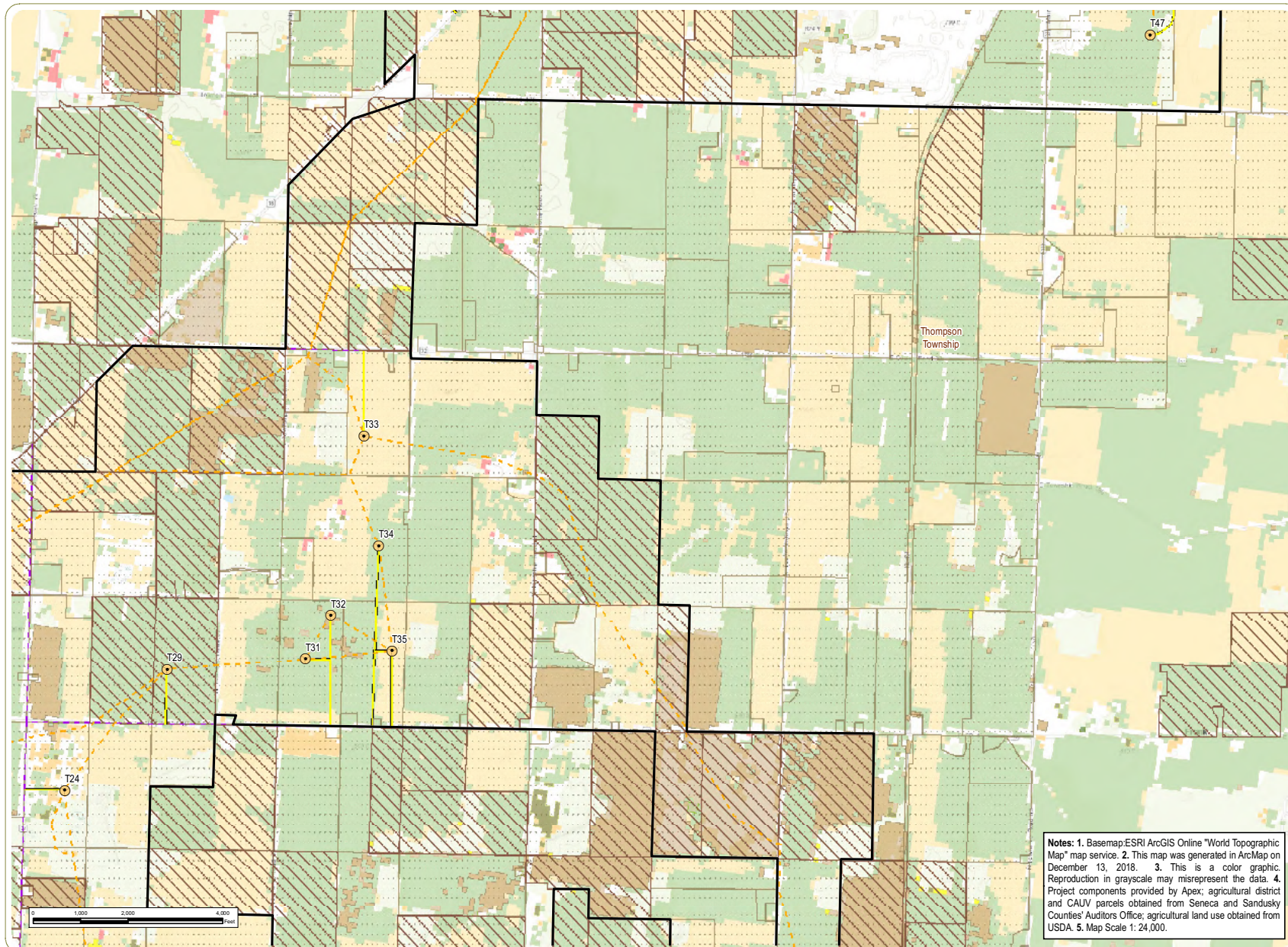
Republic Wind Farm

Adams, Pleasant, Reed, Scipio, and Thompson Townships, Seneca County, and York Township, Sandusky County, Ohio

Figure 08-8: Agricultural Resources

- Wind Turbine
- Access Road
- Collection Line
- Local Delivery Route
- Collection Substation
- Agricultural District
- CAUV Parcel
- Project Boundary
- Township Boundary
- County Boundary
- Agricultural Land Use
 - Alfalfa
 - Apples
 - Christmas Trees
 - Corn
 - Dbl Crop Winter Wheat/Soybeans
 - Other Hay/Non Alfalfa
 - Pop or Ornamental Corn
 - Soybeans
 - Winter Wheat



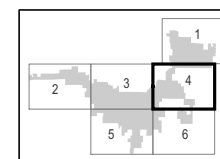


Republic Wind Farm

Adams, Pleasant, Reed, Scipio, and Thompson Townships, Seneca County, and York Township, Sandusky County, Ohio

Figure 08-8: Agricultural Resources

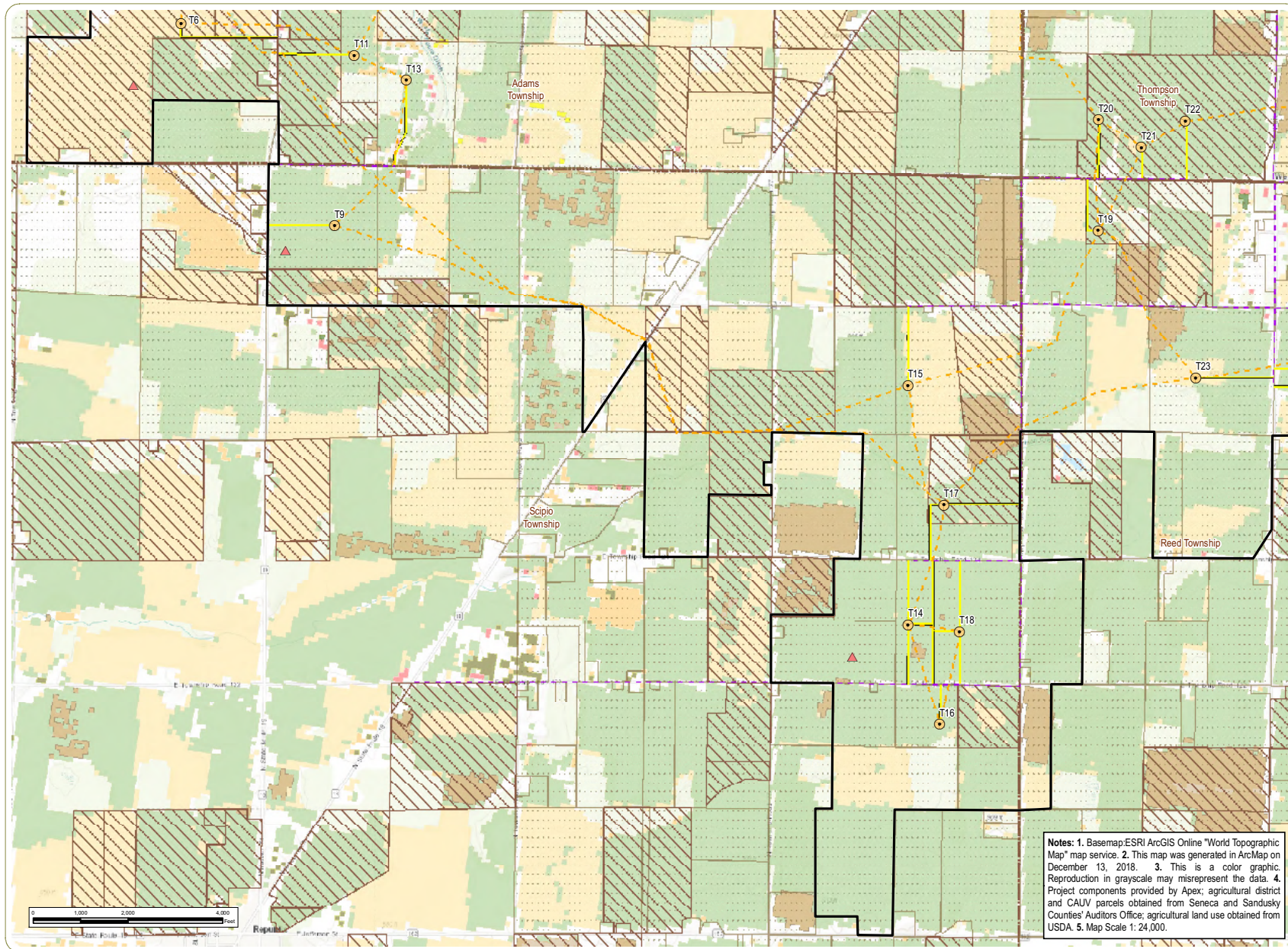
- Wind Turbine
- Access Road
- Collection Line
- Local Delivery Route
- Agricultural District
- CAUV Parcel
- Project Boundary
- Township Boundary
- County Boundary
- Agricultural Land Use
 - Alfalfa
 - Apples
 - Christmas Trees
 - Corn
 - DbI Crop Winter Wheat/Soybeans
 - Oats
 - Other Hay/Non Alfalfa
 - Pop or Ornamental Corn
 - Soybeans
 - Winter Wheat



Sheet 4 of 6



Notes: 1. Basemap: ESRI ArcGIS Online "World Topographic Map" map service. 2. This map was generated in ArcMap on December 13, 2018. 3. This is a color graphic. Reproduction in grayscale may misrepresent the data. 4. Project components provided by Apex; agricultural district and CAUV parcels obtained from Seneca and Sandusky Counties' Auditors Office; agricultural land use obtained from USDA. 5. Map Scale 1: 24,000.

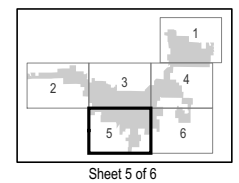


Republic Wind Farm

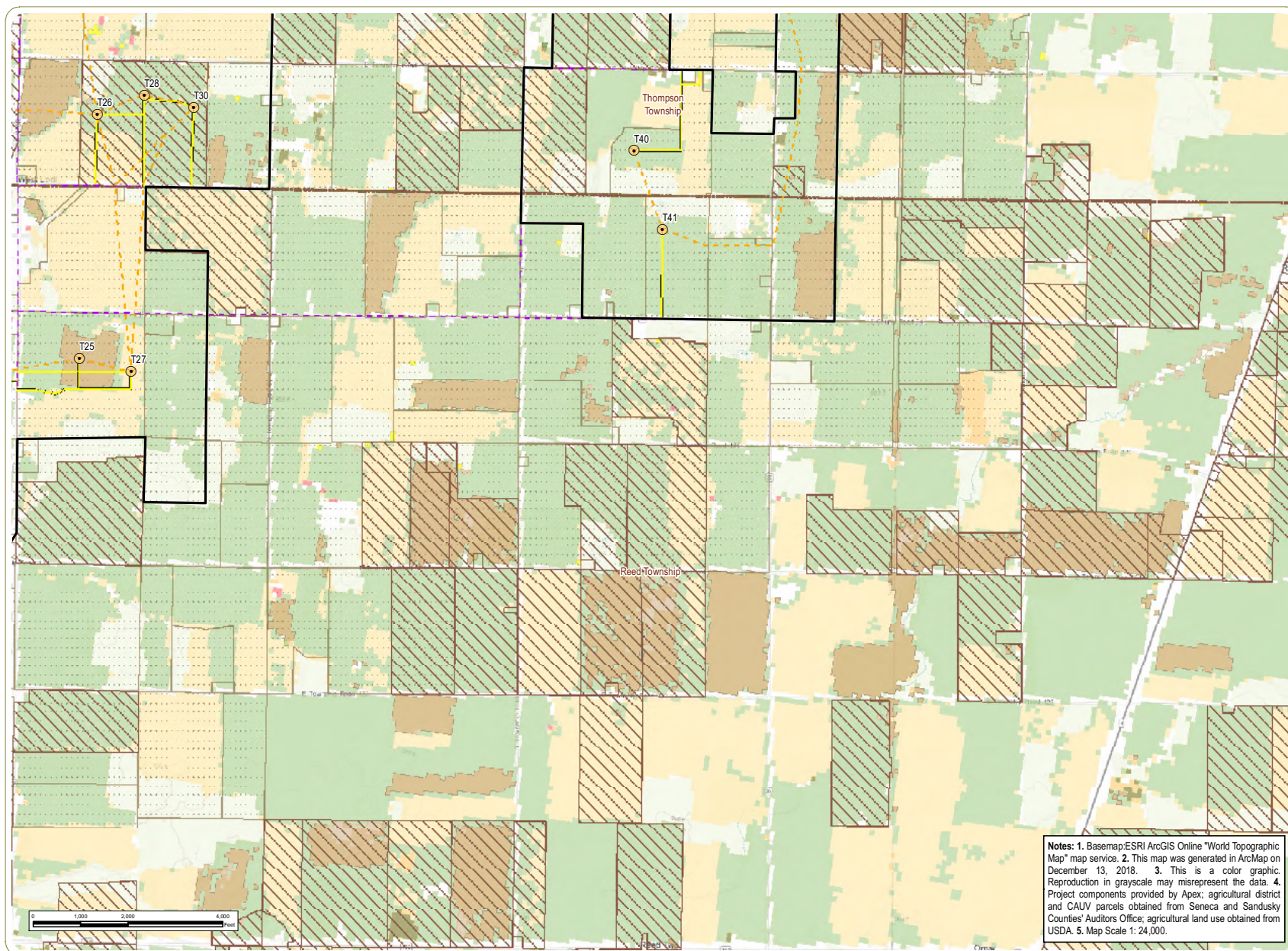
Adams, Pleasant, Reed, Scipio, and Thompson Townships, Seneca County, and York Township, Sandusky County, Ohio

Figure 08-8: Agricultural Resources

- Wind Turbine
- Met Tower
- Access Road
- Collection Line
- Local Delivery Route
- Agricultural District
- CAUV Parcel
- Project Boundary
- Township Boundary
- County Boundary
- Agricultural Land Use
 - Alfalfa
 - Apples
 - Christmas Trees
 - Corn
 - Dbl Crop Winter Wheat/Soybeans
 - Oats
 - Other Hay/Non Alfalfa
 - Pop or Ornamental Corn
 - Rye
 - Soybeans
 - Winter Wheat



Notes: 1. Basemap: ESRI ArcGIS Online "World Topographic Map" map service. 2. This map was generated in ArcMap on December 13, 2018. 3. This is a color graphic. Reproduction in grayscale may misrepresent the data. 4. Project components provided by Apex; agricultural district and CAUV parcels obtained from Seneca and Sandusky Counties' Auditors Office; agricultural land use obtained from USDA. 5. Map Scale 1: 24,000.

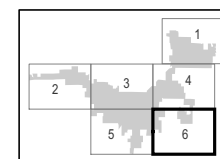


Republic Wind Farm

Adams, Pleasant, Reed, Scipio, and Thompson Townships, Seneca County, and York Township, Sandusky County, Ohio

Figure 08-8: Agricultural Resources

- Wind Turbine
- Access Road
- Collection Line
- Local Delivery Route
- Agricultural District
- CAUV Parcel
- Project Boundary
- Township Boundary
- County Boundary
- Agricultural Land Use
 - Alfalfa
 - Apples
 - Christmas Trees
 - Corn
 - Dbl Crop Winter Wheat/Soybeans
 - Oats
 - Other Hay/Non Alfalfa
 - Pop or Ornamental Corn
 - Soybeans
 - Winter Wheat



Sheet 6 of 6



www.edrdpc.com

Notes: 1. Basemap: ESRI ArcGIS Online "World Topographic Map" map service. 2. This map was generated in ArcMap on December 13, 2018. 3. This is a color graphic. Reproduction in grayscale may misrepresent the data. 4. Project components provided by Apex; agricultural district and CAUV parcels obtained from Seneca and Sandusky Counties' Auditors Office; agricultural land use obtained from USDA. 5. Map Scale 1: 24,000.

This foregoing document was electronically filed with the Public Utilities

Commission of Ohio Docketing Information System on

12/26/2018 11:51:21 AM

in

Case No(s). 17-2295-EL-BGN

Summary: Application Figures 08-7 Part 2 and 08-8 electronically filed by Teresa Orahod on behalf of Dylan F. Borchers