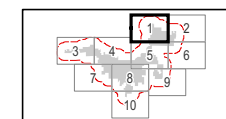


Republic Wind Farm

Adams, Pleasant, Reed, Scipio, and Thompson Townships, Seneca County, and York Township, Sandusky County, Ohio

Figure 08-5: Land Use

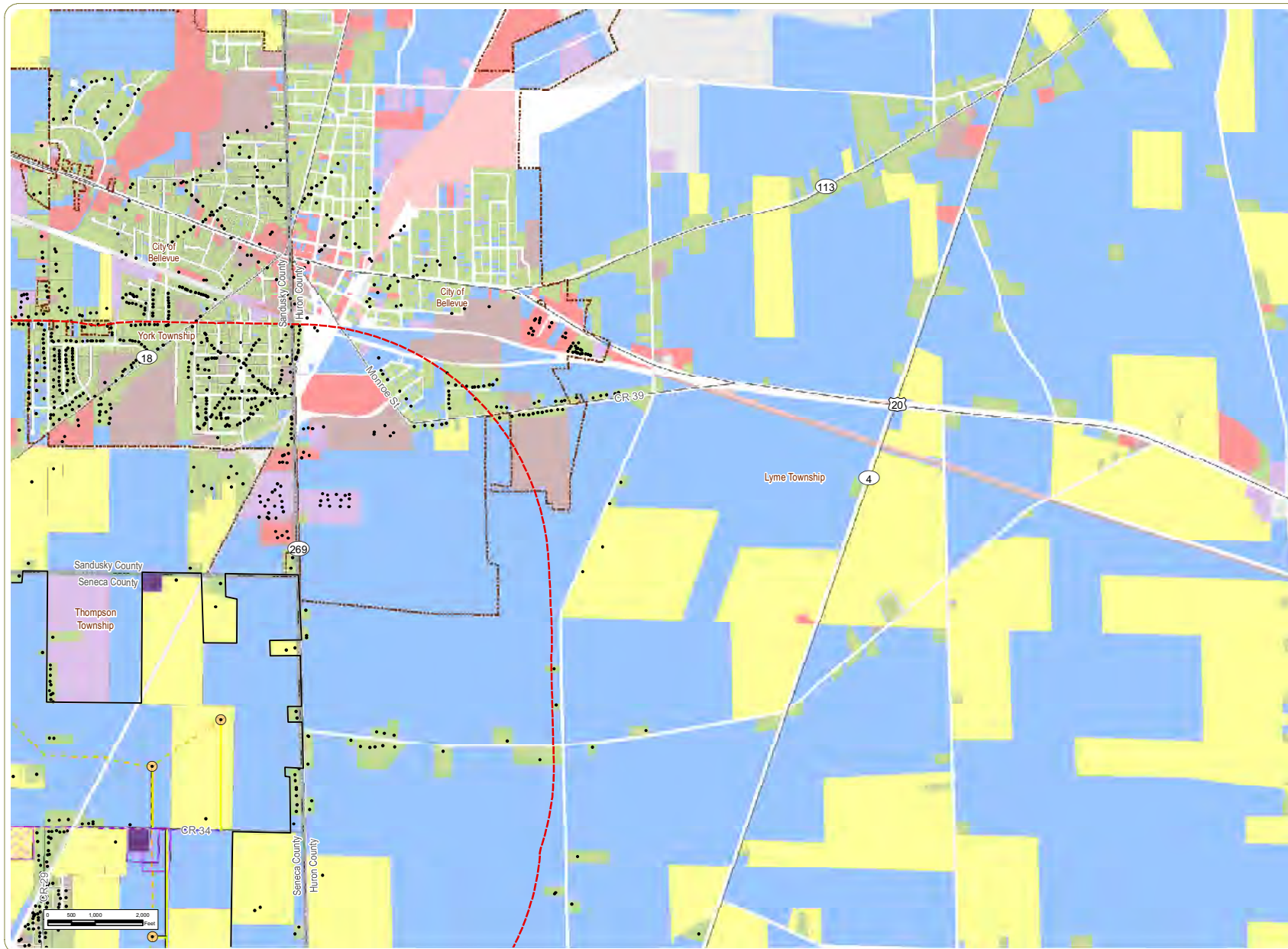
- Wind Turbine
 - Structure
 - Access Road
 - - - Collection Line
 - - - Local Delivery Route
 - ▨ Laydown Yard
 - ▭ Project Boundary
 - ▭ 1 Mile Study Area
 - ▭ Parcel Boundary
 - ▭ City/Village Boundary
 - ▭ Township Boundary
 - ▭ County Boundary
- Land Use**
- Agricultural
 - Commercial
 - Exempt
 - Industrial
 - Mining
 - Public Utilities
 - Residential
 - Unknown



Sheet 1 of 10

Notes: 1. Basemap: ESRI StreetMap North America, 2008. 2. This map was generated in ArcMap on December 13, 2018. 3. This is a color graphic. Reproduction in grayscale may misrepresent the data. 4. Project components and parcel boundaries provided by Apex. 5. Map Scale 1: 24,000.



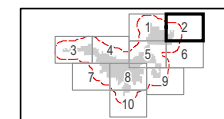


Republic Wind Farm

Adams, Pleasant, Reed, Scipio, and Thompson Townships, Seneca County, and York Township, Sandusky County, Ohio

Figure 08-5: Land Use

- Wind Turbine
- Structure
- Access Road
- - - Collection Line
- - - Local Delivery Route
- ▨ Laydown Yard
- O&M Facility
- ▭ Project Boundary
- ▭ 1 Mile Study Area
- ▭ Parcel Boundary
- ▭ City/Village Boundary
- ▭ Township Boundary
- ▭ County Boundary
- Land Use**
- Agricultural
- Commercial
- Exempt
- Industrial
- Mining
- Public Utilities
- Residential
- Unknown

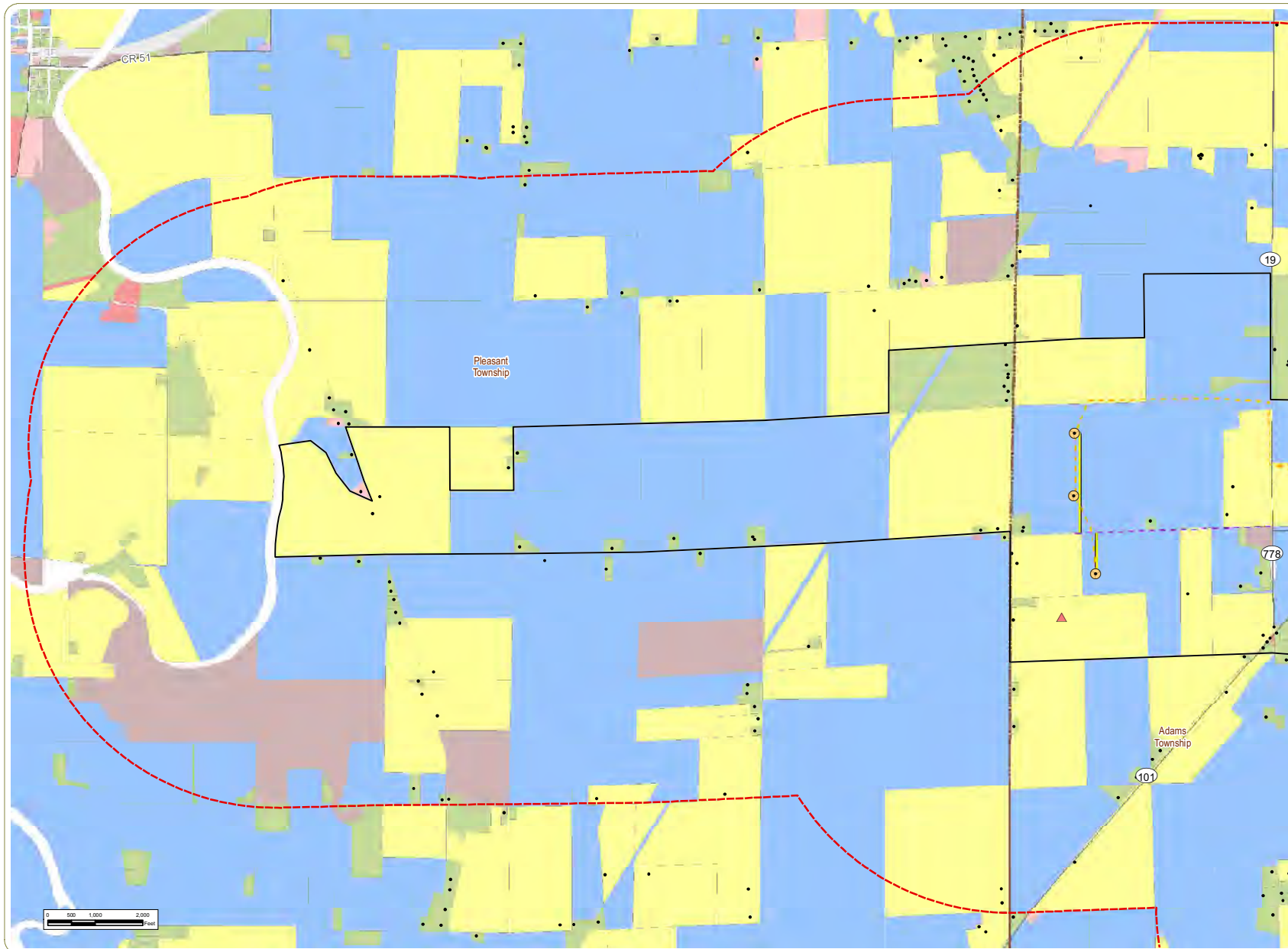


Sheet 2 of 10

Notes: 1. Basemap: ESRI StreetMap North America, 2008. 2. This map was generated in ArcMap on December 13, 2018. 3. This is a color graphic. Reproduction in grayscale may misrepresent the data. 4. Project components and parcel boundaries provided by Apex. 5. Map Scale 1: 24,000.



www.edrdpc.com

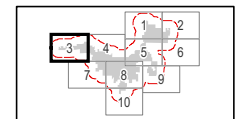


Republic Wind Farm

Adams, Pleasant, Reed, Scipio, and Thompson Townships, Seneca County, and York Township, Sandusky County, Ohio

Figure 08-5: Land Use

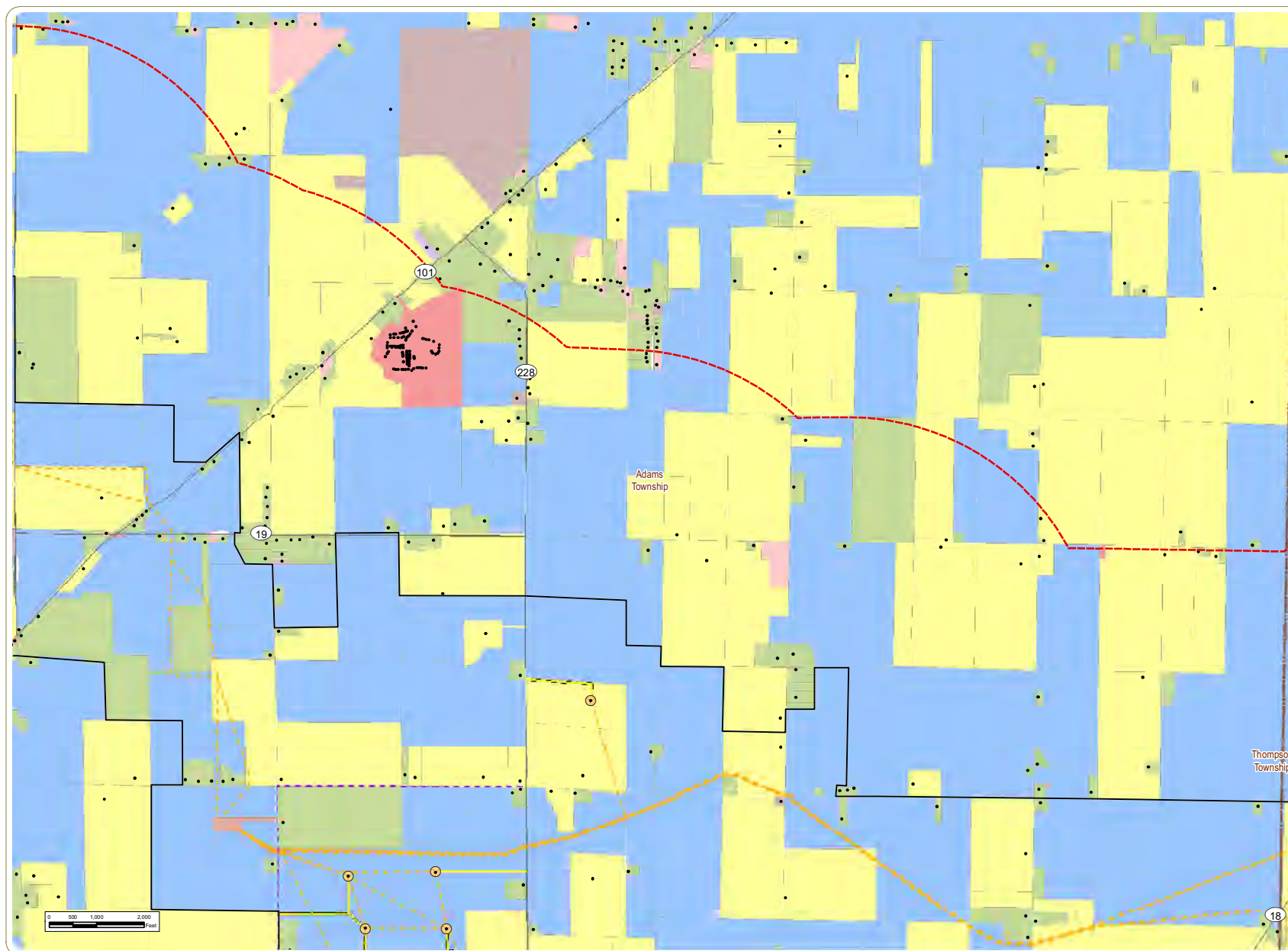
- Wind Turbine
 - ▲ Met Tower
 - Structure
 - Access Road
 - - - Collection Line
 - - - Local Delivery Route
 - Project Boundary
 - 1 Mile Study Area
 - - - Township Boundary
 - - - County Boundary
- Land Use**
- Agricultural
 - Commercial
 - Exempt
 - Industrial
 - Mining
 - Public Utilities
 - Residential
 - Unknown



Sheet 3 of 10

Notes: 1. Basemap: ESRI StreetMap North America, 2008. 2. This map was generated in ArcMap on December 13, 2018. 3. This is a color graphic. Reproduction in grayscale may misrepresent the data. 4. Project components and parcel boundaries provided by Apex. 5. Map Scale 1: 24,000.



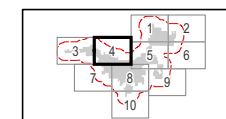


Republic Wind Farm

Adams, Pleasant, Reed, Scipio, and Thompson Townships, Seneca County, and York Township, Sandusky County, Ohio

Figure 08-5: Land Use

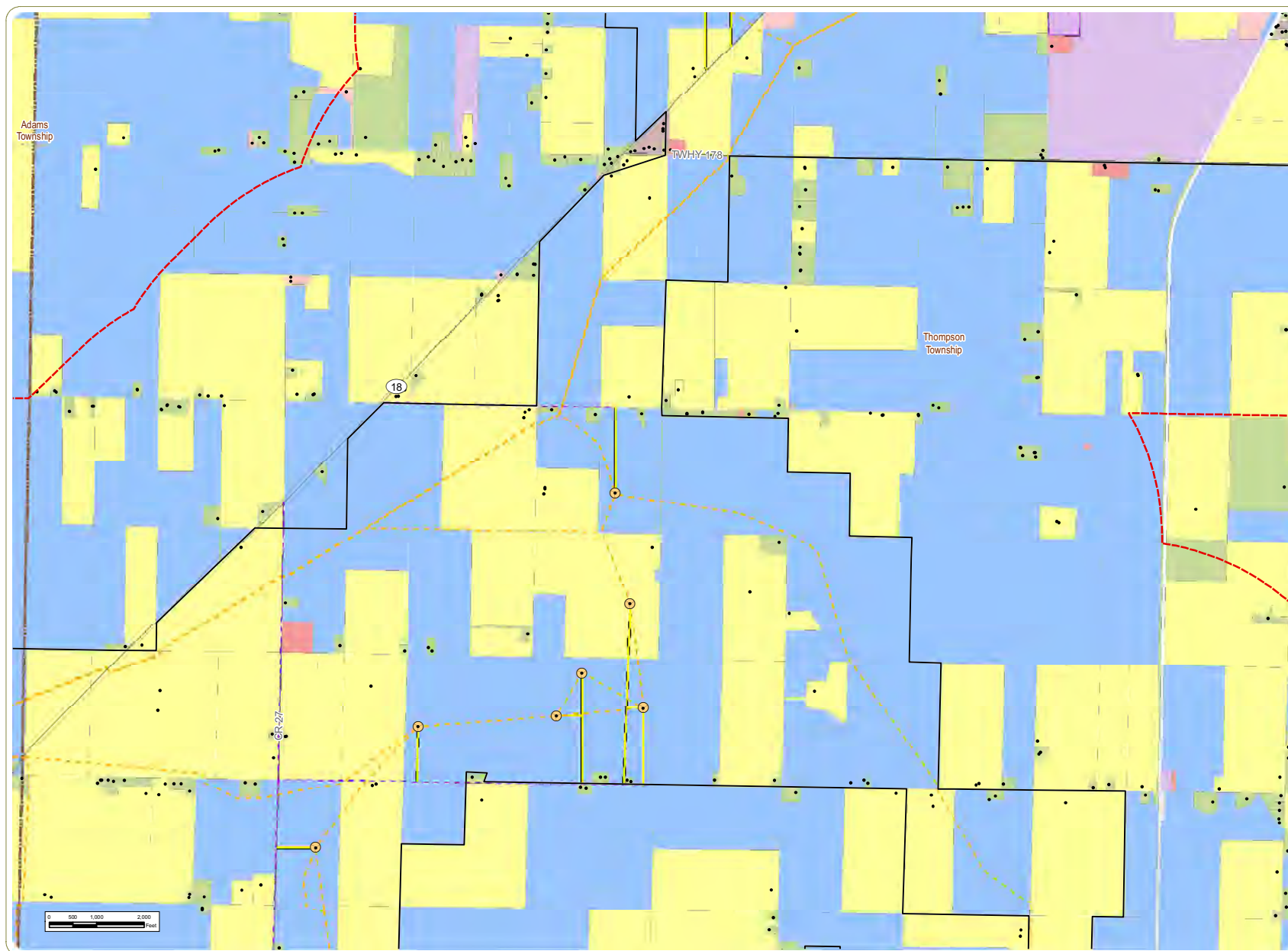
- Wind Turbine
- Structure
- Access Road
- - - Collection Line
- - - Local Delivery Route
- Collection Substation
- Project Boundary
- 1 Mile Study Area
- Township Boundary
- County Boundary
- Land Use
- Agricultural
- Commercial
- Exempt
- Industrial
- Mining
- Public Utilities
- Residential
- Unknown



Sheet 4 of 10

Notes: 1. Basemap: ESRI StreetMap North America, 2008. 2. This map was generated in ArcMap on December 13, 2018. 3. This is a color graphic. Reproduction in grayscale may misrepresent the data. 4. Project components and parcel boundaries provided by Apex. 5. Map Scale 1: 24,000.



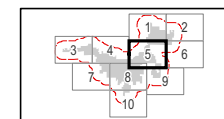


Republic Wind Farm

Adams, Pleasant, Reed, Scipio, and Thompson Townships, Seneca County, and York Township, Sandusky County, Ohio

Figure 08-5: Land Use

- Wind Turbine
 - Structure
 - Access Road
 - - - Collection Line
 - - - Local Delivery Route
 - ▨ Laydown Yard
 - ▭ Project Boundary
 - ▭ 1 Mile Study Area
 - ▭ Township Boundary
 - ▭ County Boundary
- Land Use**
- Agricultural
 - Commercial
 - Exempt
 - Industrial
 - Mining
 - Public Utilities
 - Residential
 - Unknown

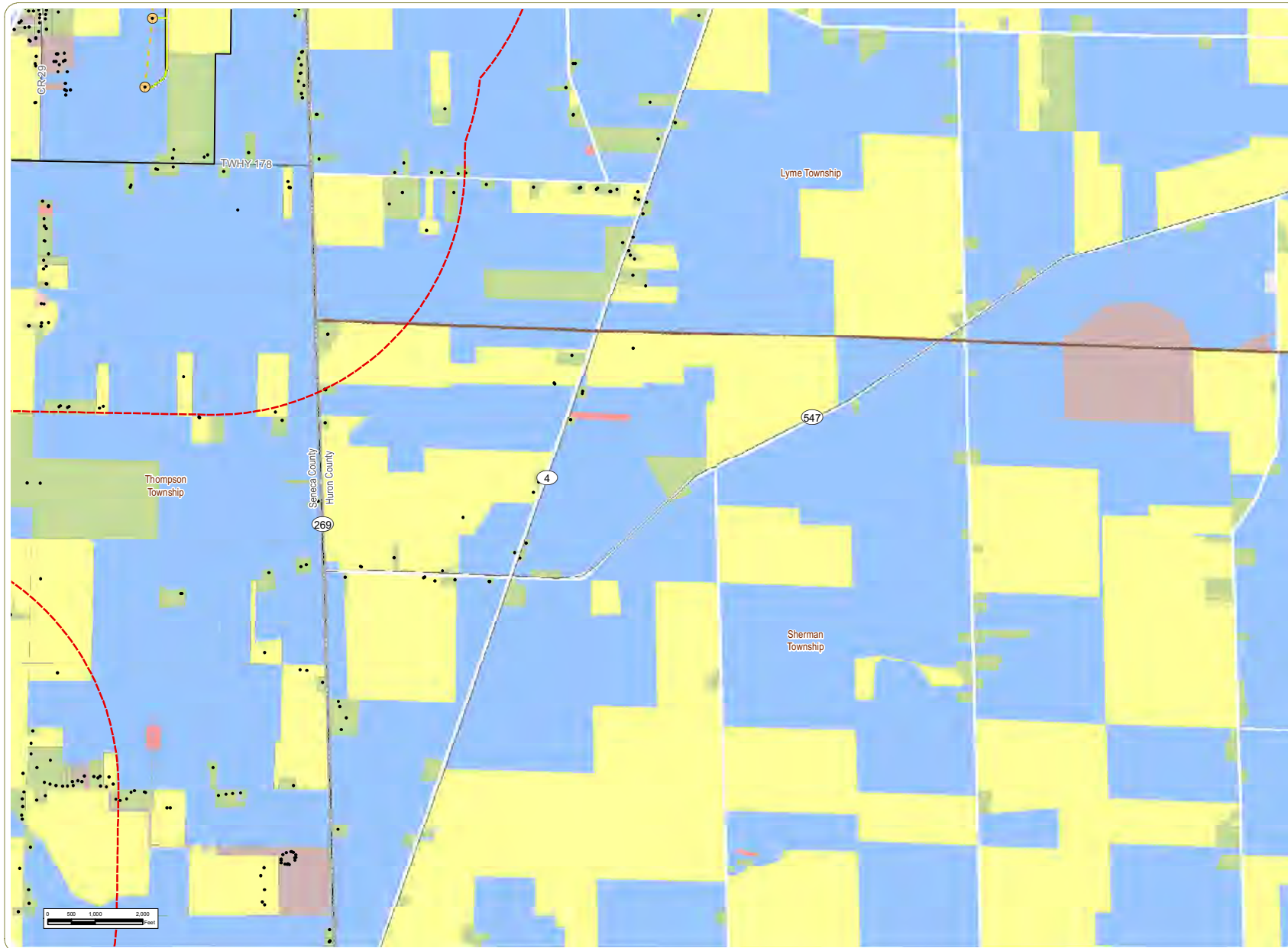


Sheet 5 of 10

Notes: 1. Basemap: ESRI StreetMap North America, 2008. 2. This map was generated in ArcMap on December 13, 2018. 3. This is a color graphic. Reproduction in grayscale may misrepresent the data. 4. Project components and parcel boundaries provided by Apex. 5. Map Scale 1: 24,000.



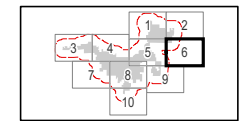
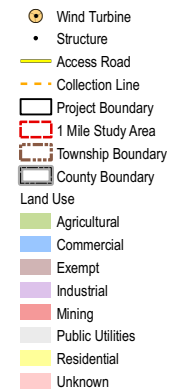
www.edrdpc.com



Republic Wind Farm

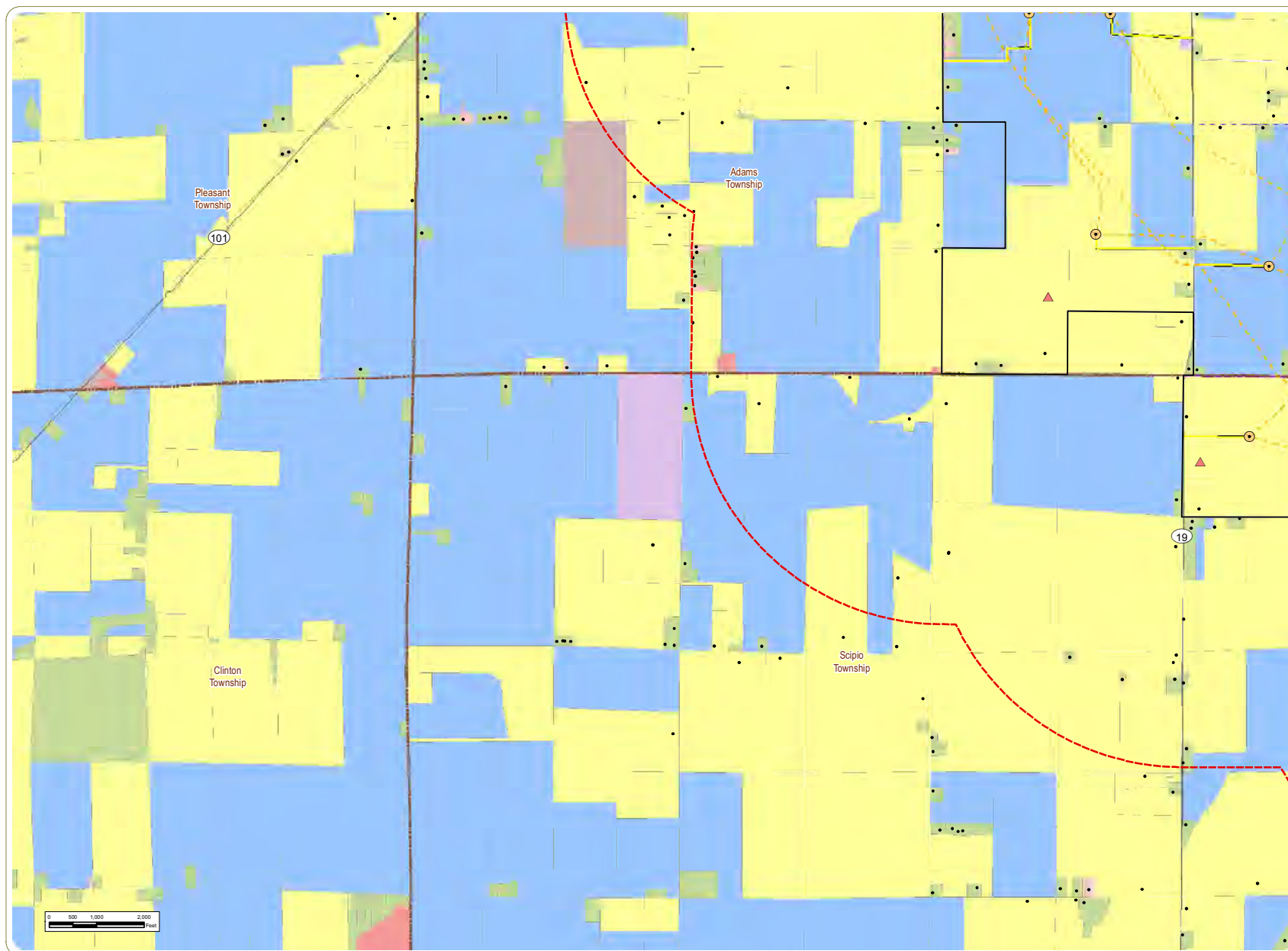
Adams, Pleasant, Reed, Scipio, and Thompson Townships, Seneca County, and York Township, Sandusky County, Ohio

Figure 08-5: Land Use



Notes: 1. Basemap: ESRI StreetMap North America, 2008. 2. This map was generated in ArcMap on December 13, 2018. 3. This is a color graphic. Reproduction in grayscale may misrepresent the data. 4. Project components and parcel boundaries provided by Apex. 5. Map Scale 1: 24,000.



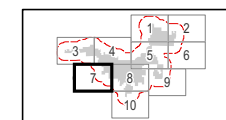


Republic Wind Farm

Adams, Pleasant, Reed, Scipio, and Thompson Townships, Seneca County, and York Township, Sandusky County, Ohio

Figure 08-5: Land Use

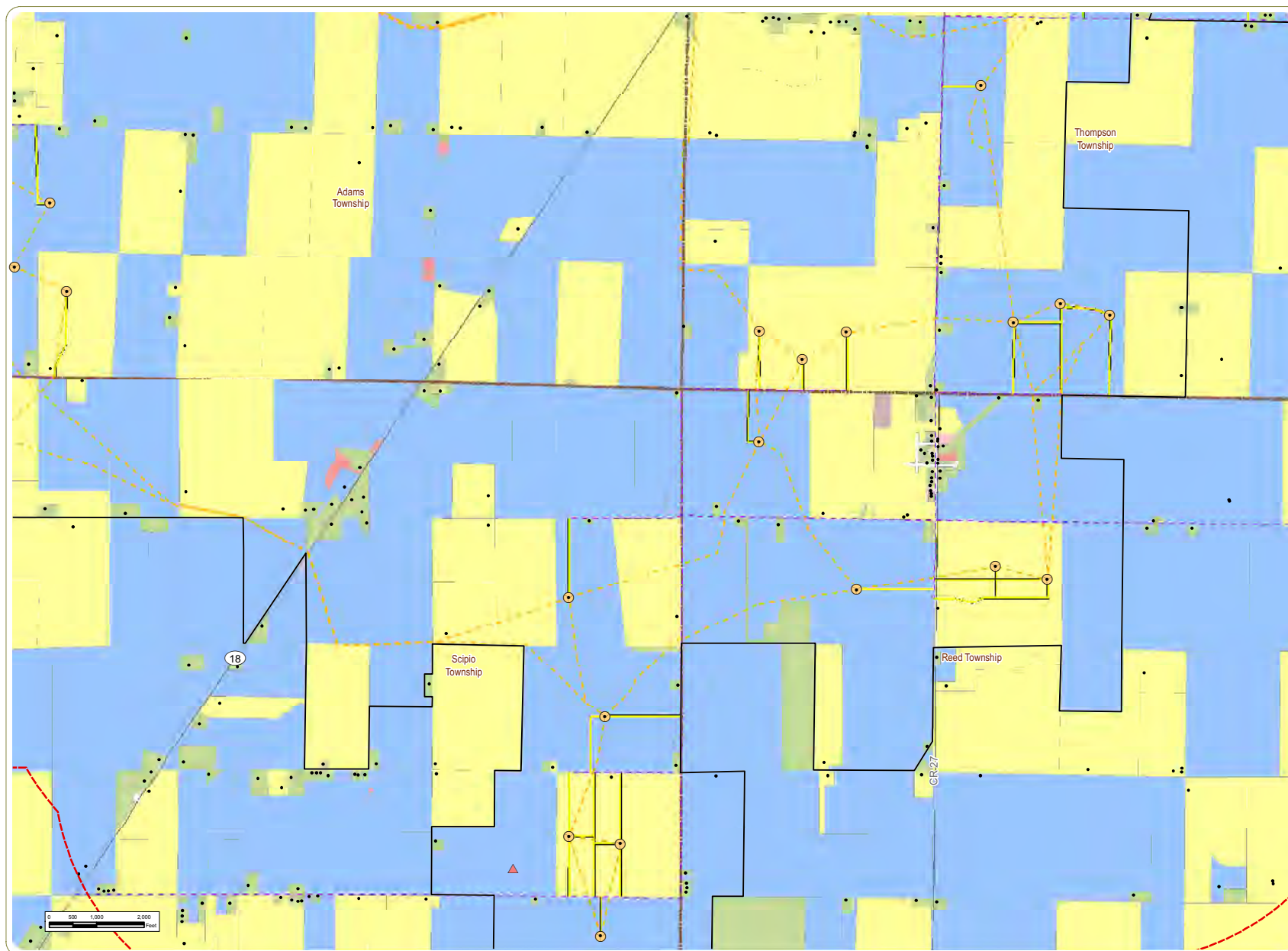
- Wind Turbine
 - ▲ Met Tower
 - Structure
 - Access Road
 - - - Collection Line
 - - - Local Delivery Route
 - Project Boundary
 - 1 Mile Study Area
 - Township Boundary
 - County Boundary
- Land Use**
- Agricultural
 - Commercial
 - Exempt
 - Industrial
 - Mining
 - Public Utilities
 - Residential
 - Unknown



Sheet 7 of 10

Notes: 1. Basemap: ESRI StreetMap North America, 2008. 2. This map was generated in ArcMap on December 13, 2018. 3. This is a color graphic. Reproduction in grayscale may misrepresent the data. 4. Project components and parcel boundaries provided by Apex. 5. Map Scale 1: 24,000.



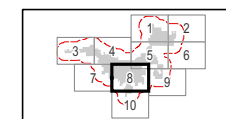


Republic Wind Farm

Adams, Pleasant, Reed, Scipio, and Thompson Townships, Seneca County, and York Township, Sandusky County, Ohio

Figure 08-5: Land Use

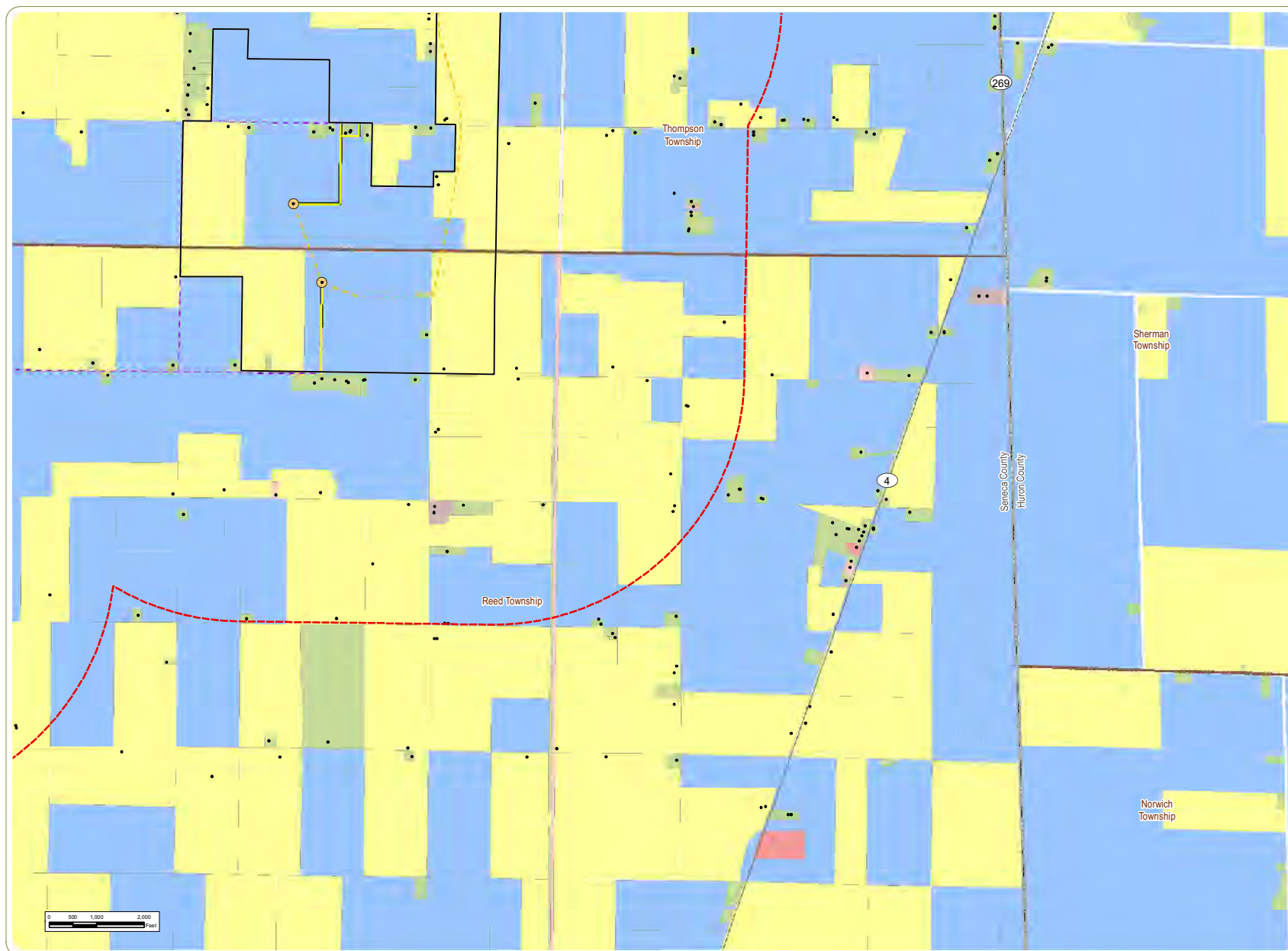
- Wind Turbine
 - ▲ Met Tower
 - Structure
 - Access Road
 - - - Collection Line
 - - - Local Delivery Route
 - Project Boundary
 - 1 Mile Study Area
 - Township Boundary
 - County Boundary
- Land Use**
- Agricultural
 - Commercial
 - Exempt
 - Industrial
 - Mining
 - Public Utilities
 - Residential
 - Unknown



Sheet 8 of 10

Notes: 1. Basemap: ESRI StreetMap North America, 2008. 2. This map was generated in ArcMap on December 13, 2018. 3. This is a color graphic. Reproduction in grayscale may misrepresent the data. 4. Project components and parcel boundaries provided by Apex. 5. Map Scale 1: 24,000.

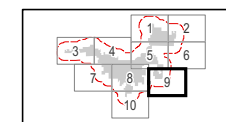
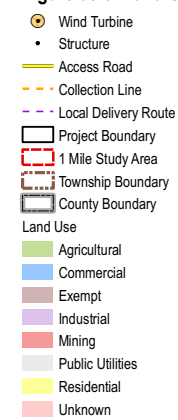




Republic Wind Farm

Adams, Pleasant, Reed, Scipio, and Thompson Townships, Seneca County, and York Township, Sandusky County, Ohio

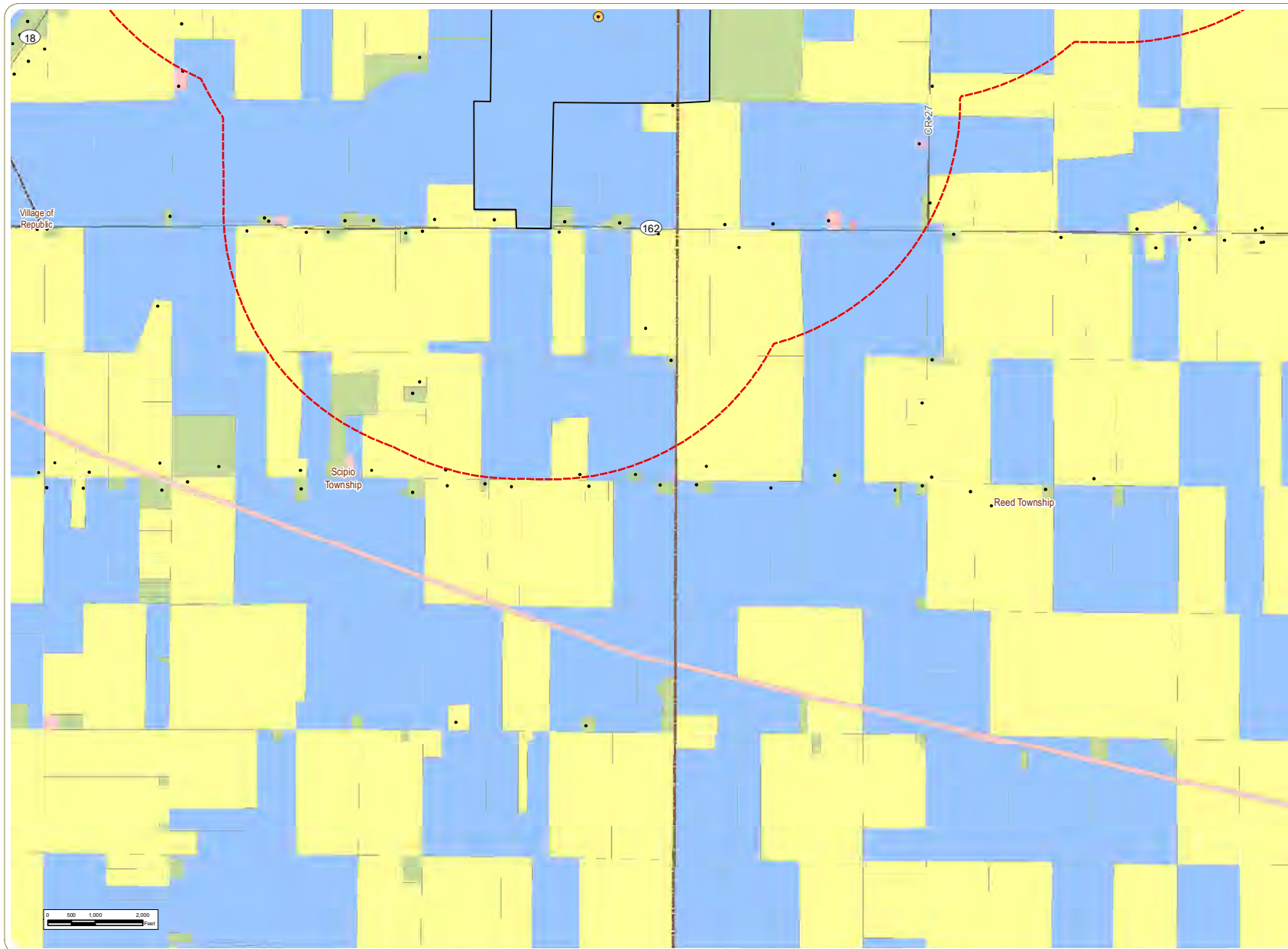
Figure 08-5: Land Use



Sheet 9 of 10

Notes: 1. Basemap: ESRI StreetMap North America, 2008. 2. This map was generated in ArcMap on December 13, 2018. 3. This is a color graphic. Reproduction in grayscale may misrepresent the data. 4. Project components and parcel boundaries provided by Apex. 5. Map Scale 1: 24,000.



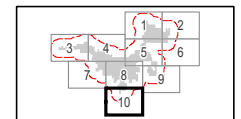


Republic Wind Farm

Adams, Pleasant, Reed, Scipio, and Thompson Townships, Seneca County, and York Township, Sandusky County, Ohio

Figure 08-5: Land Use

- Wind Turbine
 - Structure
 - Access Road
 - - - Collection Line
 - Project Boundary
 - 1 Mile Study Area
 - - - City/Village Boundary
 - - - Township Boundary
 - - - County Boundary
- Land Use**
- Agricultural
 - Commercial
 - Exempt
 - Industrial
 - Mining
 - Public Utilities
 - Residential
 - Unknown

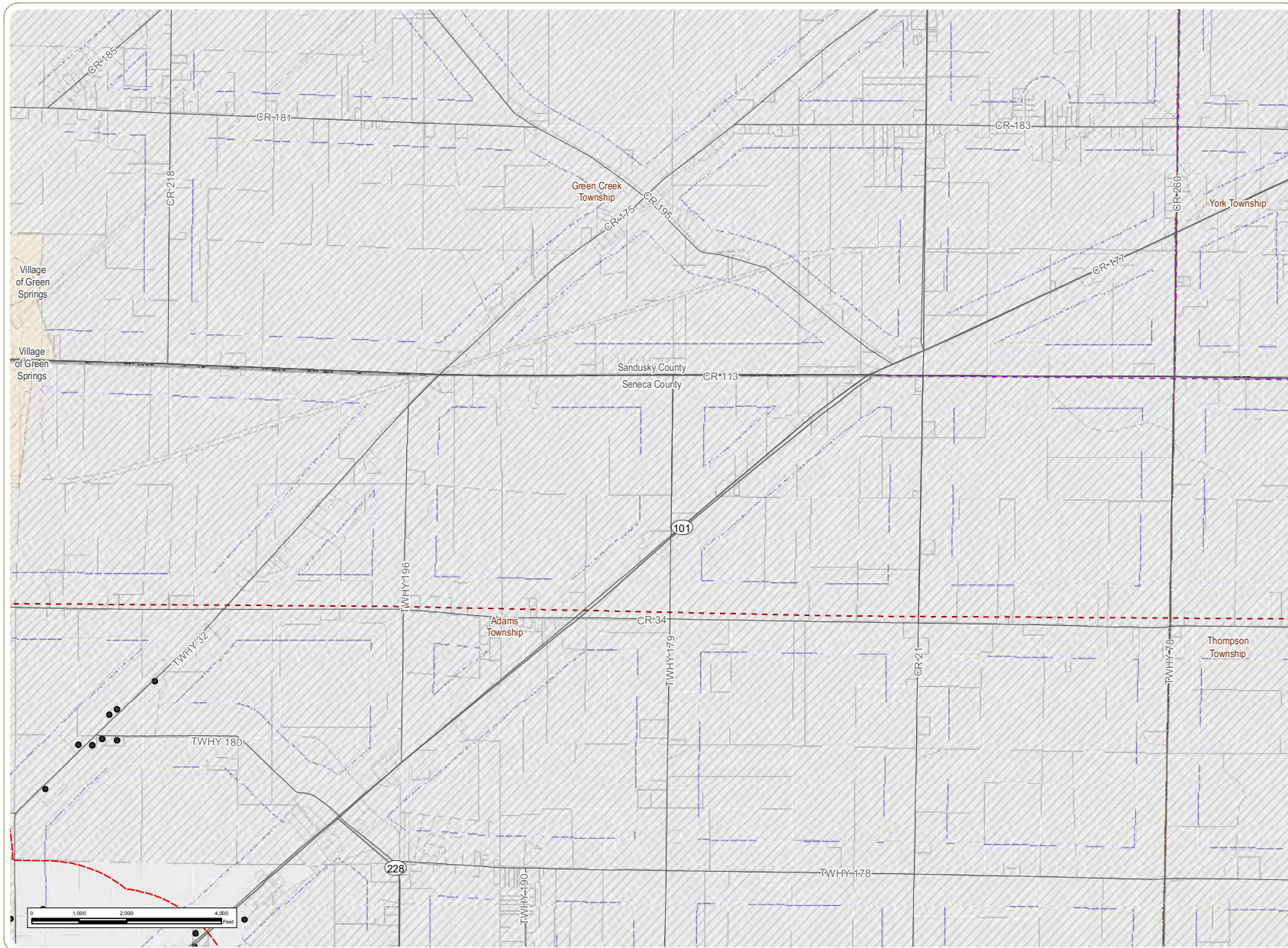


Sheet 10 of 10

Notes: 1. Basemap: ESRI StreetMap North America, 2008. 2. This map was generated in ArcMap on December 13, 2018. 3. This is a color graphic. Reproduction in grayscale may misrepresent the data. 4. Project components and parcel boundaries provided by Apex. 5. Map Scale 1: 24,000.



www.edrdpc.com



Republic Wind Farm

Adams, Pleasant, Reed, Scipio, and Thompson Townships, Seneca County, and York Township, Sandusky County, Ohio
Figure 08-6: Wind Turbine Setbacks

- Habitable Residence
- - - Local Delivery Route
- - - Major Pipeline
- Public Road
- 662 Foot Setback From Utilities
- 1,371 Foot Setback From Non-Participating Parcels
- Nonparticipating Parcel
- Parcel Boundary
- Half Mile Study Area
- City/Village Boundary
- Township Boundary
- County Boundary

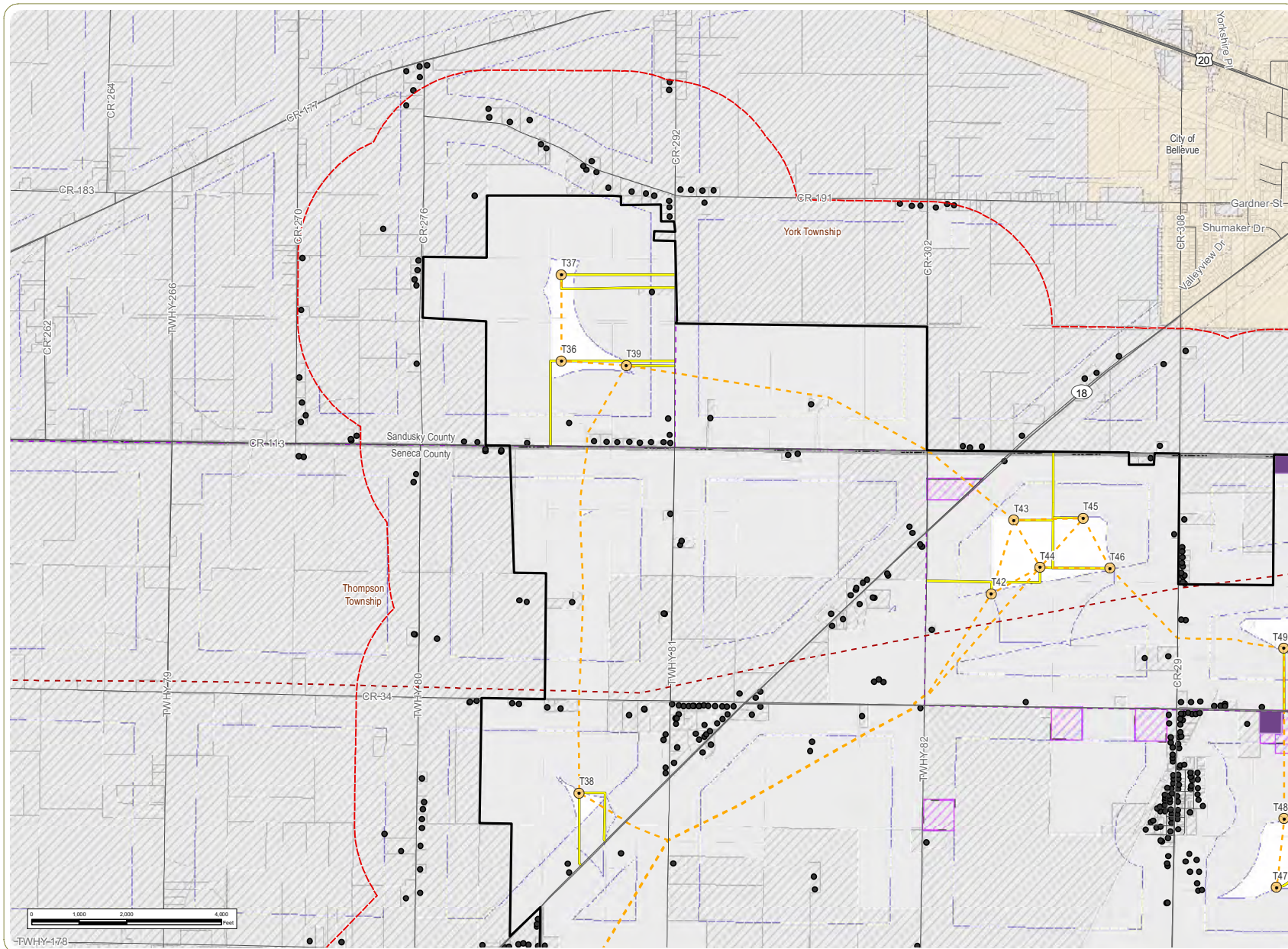


Sheet 1 of 8

Notes: 1. Basemap: Ohio Department of Transportation. 2. This map was generated in ArcMap on December 13, 2018. 3. This is a color graphic. Reproduction in grayscale may misrepresent the data. 4. Facility components, parcel boundaries, and pipeline data provided by Apex. 5. Wind turbine setbacks include 1,371 feet from non-participating parcels and 662.2 feet from existing pipelines, transmission lines, and public roads. 6. A survey will be conducted to inform final Facility design, and to verify the precise location of gas pipelines. The exact turbine locations may be subject to minor engineering revisions (micro-siting) prior to construction. Any such micro-siting will comply with state laws and regulations (including all applicable setbacks), be compatible with landowner preferences, and be presented at the preconstruction meeting with OPSB. 7. Map Scale 1: 24,000.

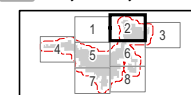


www.edrdpc.com



Republic Wind Farm Adams, Pleasant, Reed, Scipio, and Thompson Townships, Seneca County, and York Township, Sandusky County, Ohio **Figure 08-6: Wind Turbine Setbacks**

- Wind Turbine
- Habitable Residence
- Access Road
- Collection Line
- Local Delivery Route
- Major Pipeline
- Public Road
- Laydown Yard
- O&M Facility
- 662 Foot Setback From Utilities
- 1,371 Foot Setback From Non-Participating Parcels
- Nonparticipating Parcel
- Parcel Boundary
- Project Boundary
- Half Mile Study Area
- City/Village Boundary
- Township Boundary
- County Boundary

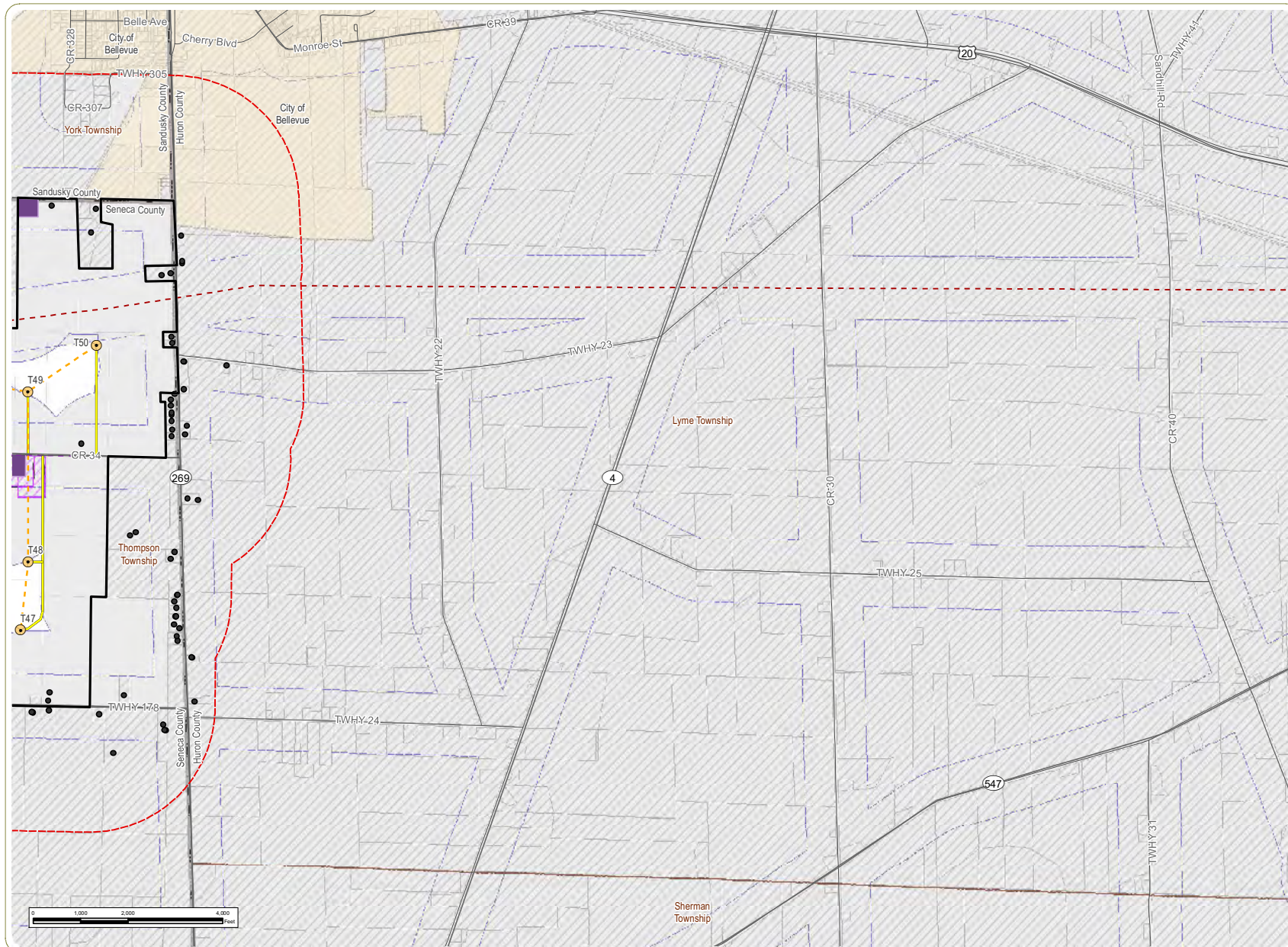


Sheet 2 of 8

Notes: 1. Basemap: Ohio Department of Transportation. 2. This map was generated in ArcMap on December 13, 2018. 3. This is a color graphic. Reproduction in grayscale may misrepresent the data. 4. Facility components, parcel boundaries, and pipeline data provided by Apex. 5. Wind turbine setbacks include 1,371 feet from non-participating parcels and 662.2 feet from existing pipelines, transmission lines, and public roads. 6. A survey will be conducted to inform final Facility design, and to verify the precise location of gas pipelines. The exact turbine locations may be subject to minor engineering revisions (micro-siting) prior to construction. Any such micro-siting will comply with state laws and regulations (including all applicable setbacks), be compatible with landowner preferences, and be presented at the preconstruction meeting with OPSB. 7. Map Scale 1: 24,000.



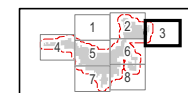
www.edrdpc.com



Republic Wind Farm

Adams, Pleasant, Reed, Scipio, and Thompson Townships, Seneca County, and York Township, Sandusky County, Ohio
Figure 08-6: Wind Turbine Setbacks

- Wind Turbine
- Habitable Residence
- Access Road
- - - Collection Line
- - - Local Delivery Route
- - - Major Pipeline
- Public Road
- Laydown Yard
- O&M Facility
- 662 Foot Setback From Utilities
- 1,371 Foot Setback From Non-Participating Parcels
- Nonparticipating Parcel
- Parcel Boundary
- Project Boundary
- Half Mile Study Area
- City/Village Boundary
- Township Boundary
- County Boundary

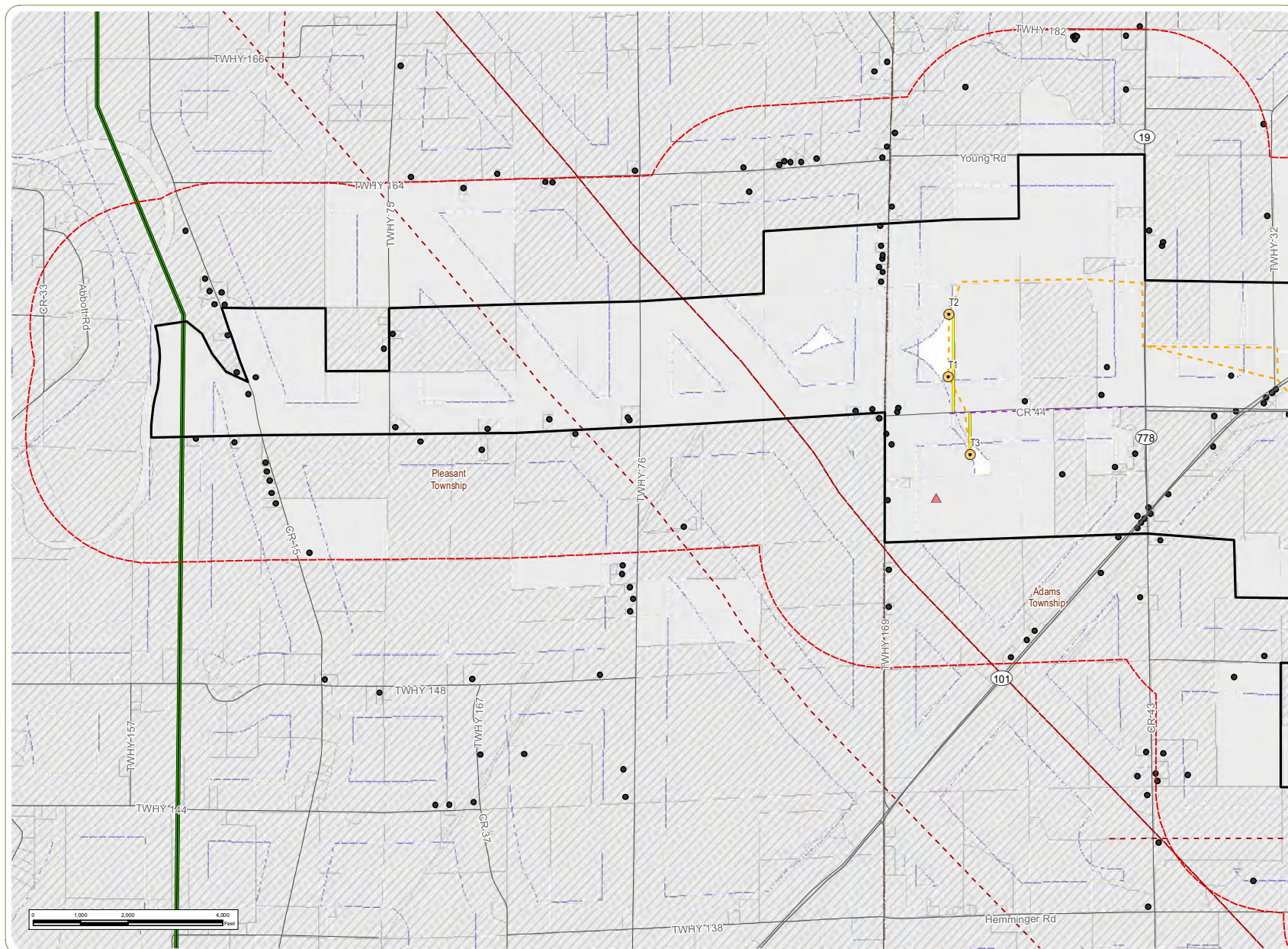


Sheet 3 of 8

Notes: 1. Basemap: Ohio Department of Transportation. 2. This map was generated in ArcMap on December 13, 2018. 3. This is a color graphic. Reproduction in grayscale may misrepresent the data. 4. Facility components, parcel boundaries, and pipeline data provided by Apex. 5. Wind turbine setbacks include 1,371 feet from non-participating parcels and 662.2 feet from existing pipelines, transmission lines, and public roads. 6. A survey will be conducted to inform final Facility design, and to verify the precise location of gas pipelines. The exact turbine locations may be subject to minor engineering revisions (micro-siting) prior to construction. Any such micro-siting will comply with state laws and regulations (including all applicable setbacks), be compatible with landowner preferences, and be presented at the preconstruction meeting with OPSB. 7. Map Scale 1: 24,000.



www.edrdpc.com

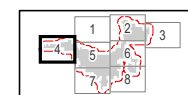


Republic Wind Farm

Adams, Pleasant, Reed, Scipio, and Thompson Townships, Seneca County, and York Township, Sandusky County, Ohio

Figure 08-6: Wind Turbine Setbacks

- Wind Turbine
- ▲ Met Tower
- Habitable Residence
- Access Road
- - - Collection Line
- - - Local Delivery Route
- Existing Transmission Line
- - - Major Pipeline
- Public Road
- 662 Foot Setback From Utilities
- 1,371 Foot Setback From Non-Participating Parcels
- Nonparticipating Parcel
- Parcel Boundary
- Project Boundary
- Half Mile Study Area
- Township Boundary
- County Boundary

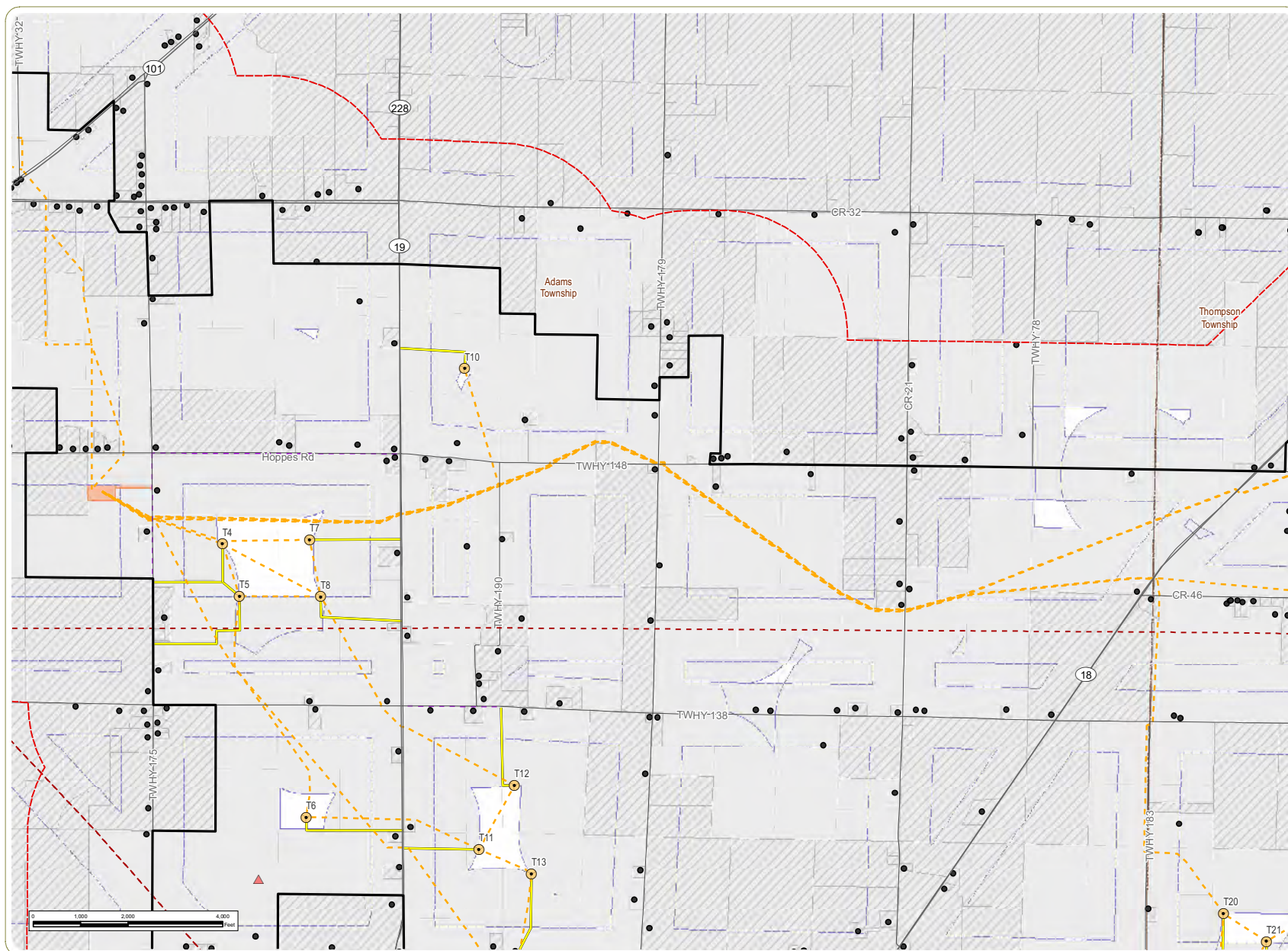


Sheet 4 of 8

Notes: 1. Basemap: Ohio Department of Transportation. 2. This map was generated in ArcMap on December 13, 2018. 3. This is a color graphic. Reproduction in grayscale may misrepresent the data. 4. Facility components, parcel boundaries, and pipeline data provided by Apex. 5. Wind turbine setbacks include 1,371 feet from non-participating parcels and 662.2 feet from existing pipelines, transmission lines, and public roads. 6. A survey will be conducted to inform final Facility design, and to verify the precise location of gas pipelines. The exact turbine locations may be subject to minor engineering revisions (micro-siting) prior to construction. Any such micro-siting will comply with state laws and regulations (including all applicable setbacks), be compatible with landowner preferences, and be presented at the preconstruction meeting with OPSB. 7. Map Scale 1: 24,000.

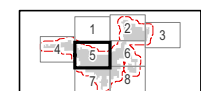


www.edrdpc.com



Republic Wind Farm Adams, Pleasant, Reed, Scipio, and Thompson Townships, Seneca County, and York Township, Sandusky County, Ohio **Figure 08-6: Wind Turbine Setbacks**

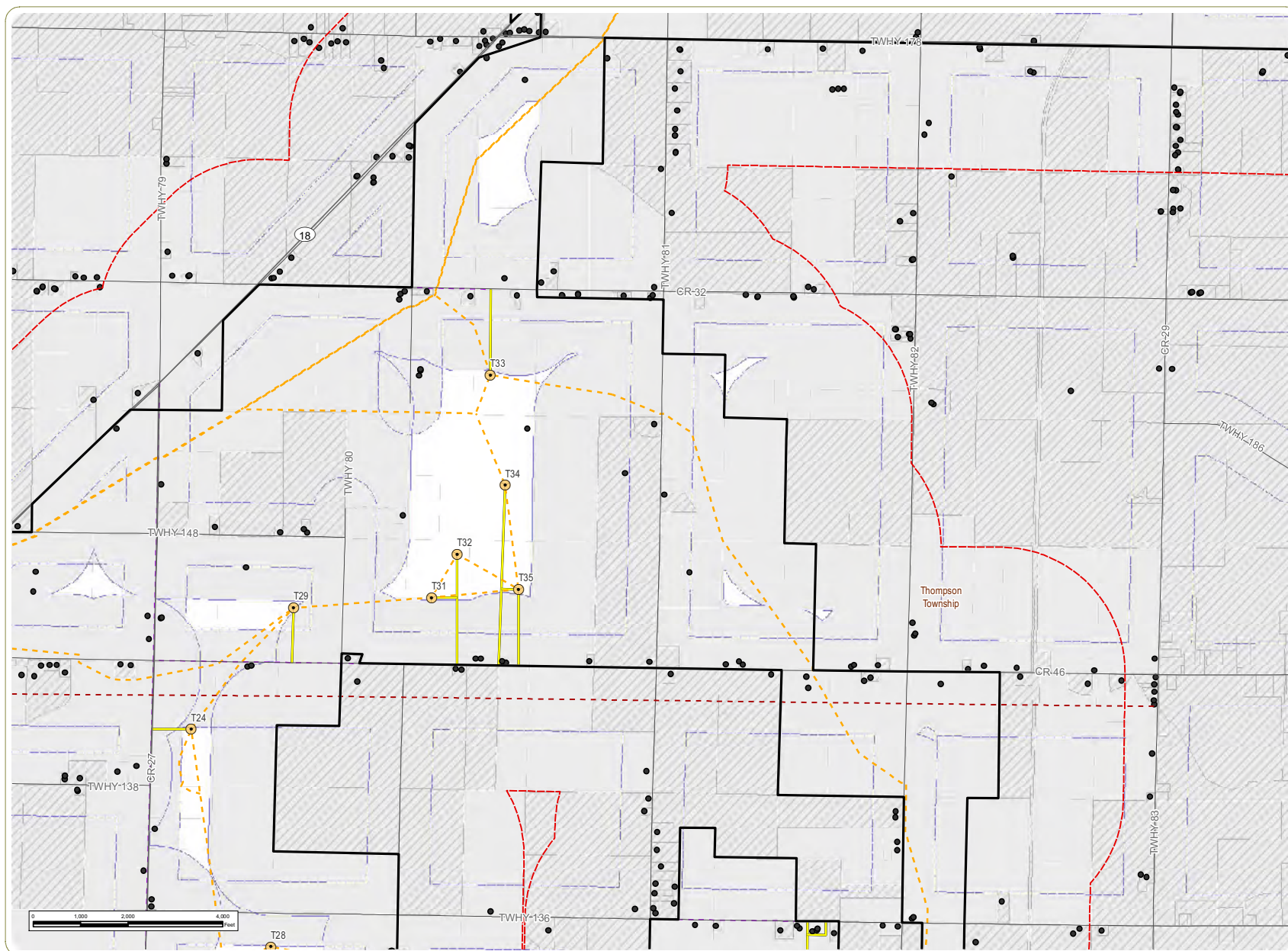
- Wind Turbine
- Met Tower
- Habitable Residence
- Access Road
- Collection Line
- Local Delivery Route
- Major Pipeline
- Public Road
- Collection Substation
- 662 Foot Setback From Utilities
- 1,371 Foot Setback From Non-Participating Parcels
- Nonparticipating Parcel
- Parcel Boundary
- Project Boundary
- Half Mile Study Area
- Township Boundary
- County Boundary



Sheet 5 of 8

Notes: 1. Basemap: Ohio Department of Transportation. 2. This map was generated in ArcMap on December 13, 2018. 3. This is a color graphic. Reproduction in grayscale may misrepresent the data. 4. Facility components, parcel boundaries, and pipeline data provided by Apex. 5. Wind turbine setbacks include 1,371 feet from non-participating parcels and 662.2 feet from existing pipelines, transmission lines, and public roads. 6. A survey will be conducted to inform final Facility design, and to verify the precise location of gas pipelines. The exact turbine locations may be subject to minor engineering revisions (micro-siting) prior to construction. Any such micro-siting will comply with state laws and regulations (including all applicable setbacks), be compatible with landowner preferences, and be presented at the preconstruction meeting with OPSB. 7. Map Scale 1: 24,000.





Republic Wind Farm

Adams, Pleasant, Reed, Scipio, and Thompson Townships, Seneca County, and York Township, Sandusky County, Ohio

Figure 08-6: Wind Turbine Setbacks

- Wind Turbine
- Habitable Residence
- Access Road
- - - Collection Line
- - - Local Delivery Route
- - - Major Pipeline
- Public Road
- 662 Foot Setback From Utilities
- 1,371 Foot Setback From Non-Participating Parcels
- Nonparticipating Parcel
- Parcel Boundary
- Project Boundary
- Half Mile Study Area
- Township Boundary
- County Boundary

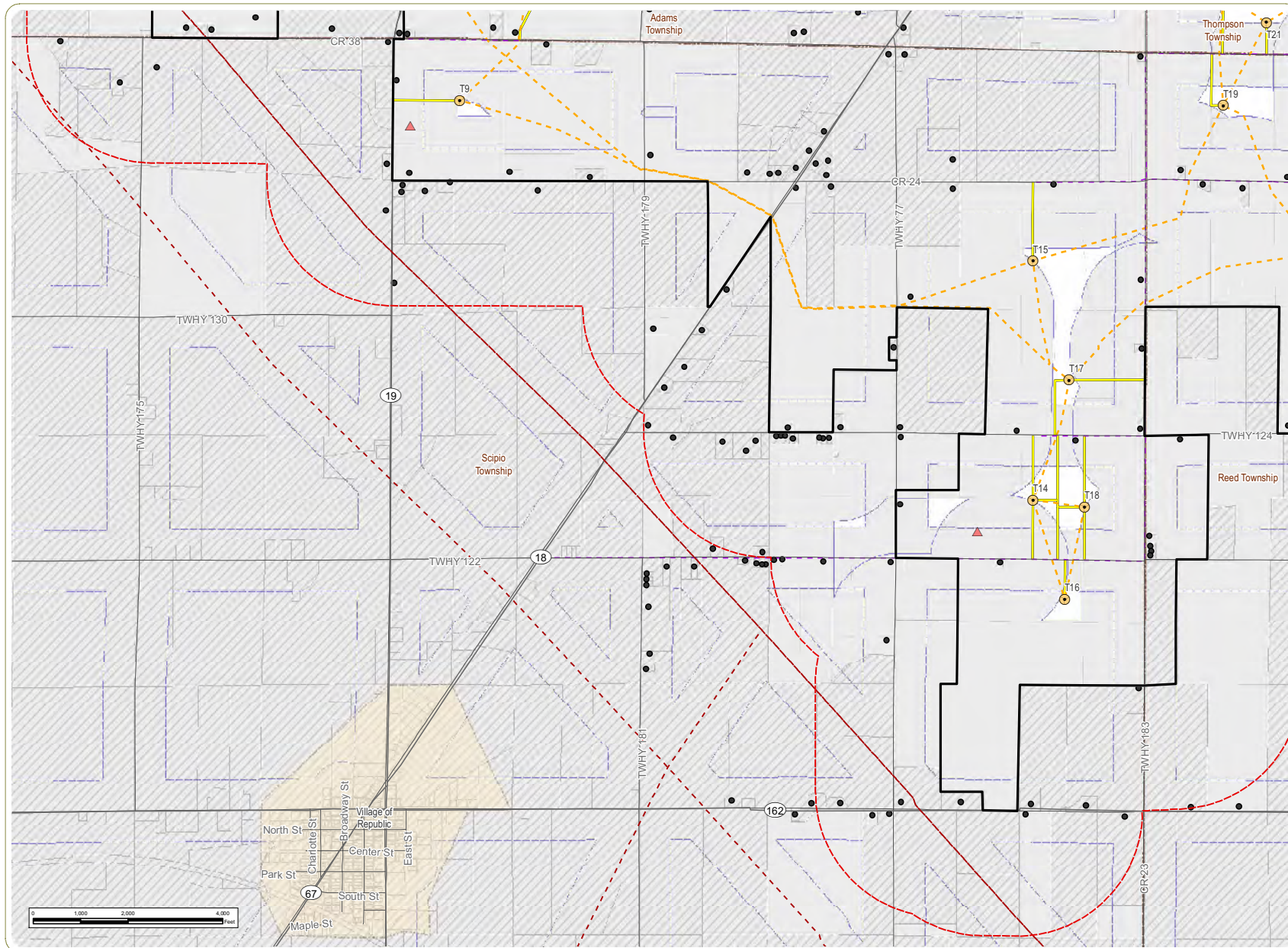


Sheet 6 of 8

Notes: 1. Basemap: Ohio Department of Transportation. 2. This map was generated in ArcMap on December 13, 2018. 3. This is a color graphic. Reproduction in grayscale may misrepresent the data. 4. Facility components, parcel boundaries, and pipeline data provided by Apex. 5. Wind turbine setbacks include 1,371 feet from non-participating parcels and 662.2 feet from existing pipelines, transmission lines, and public roads. 6. A survey will be conducted to inform final Facility design, and to verify the precise location of gas pipelines. The exact turbine locations may be subject to minor engineering revisions (micro-siting) prior to construction. Any such micro-siting will comply with state laws and regulations (including all applicable setbacks), be compatible with landowner preferences, and be presented at the preconstruction meeting with OPSB. 7. Map Scale 1: 24,000.



www.edrdpc.com

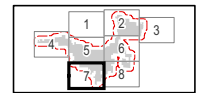


Republic Wind Farm

Adams, Pleasant, Reed, Scipio, and Thompson Townships, Seneca County, and York Township, Sandusky County, Ohio

Figure 08-6: Wind Turbine Setbacks

- Wind Turbine
- ▲ Met Tower
- Habitable Residence
- Access Road
- - - Collection Line
- - - Local Delivery Route
- - - Major Pipeline
- Public Road
- 662 Foot Setback From Utilities
- 1,371 Foot Setback From Non-Participating Parcels
- Nonparticipating Parcel
- Parcel Boundary
- Project Boundary
- Half Mile Study Area
- City/Village Boundary
- Township Boundary
- County Boundary

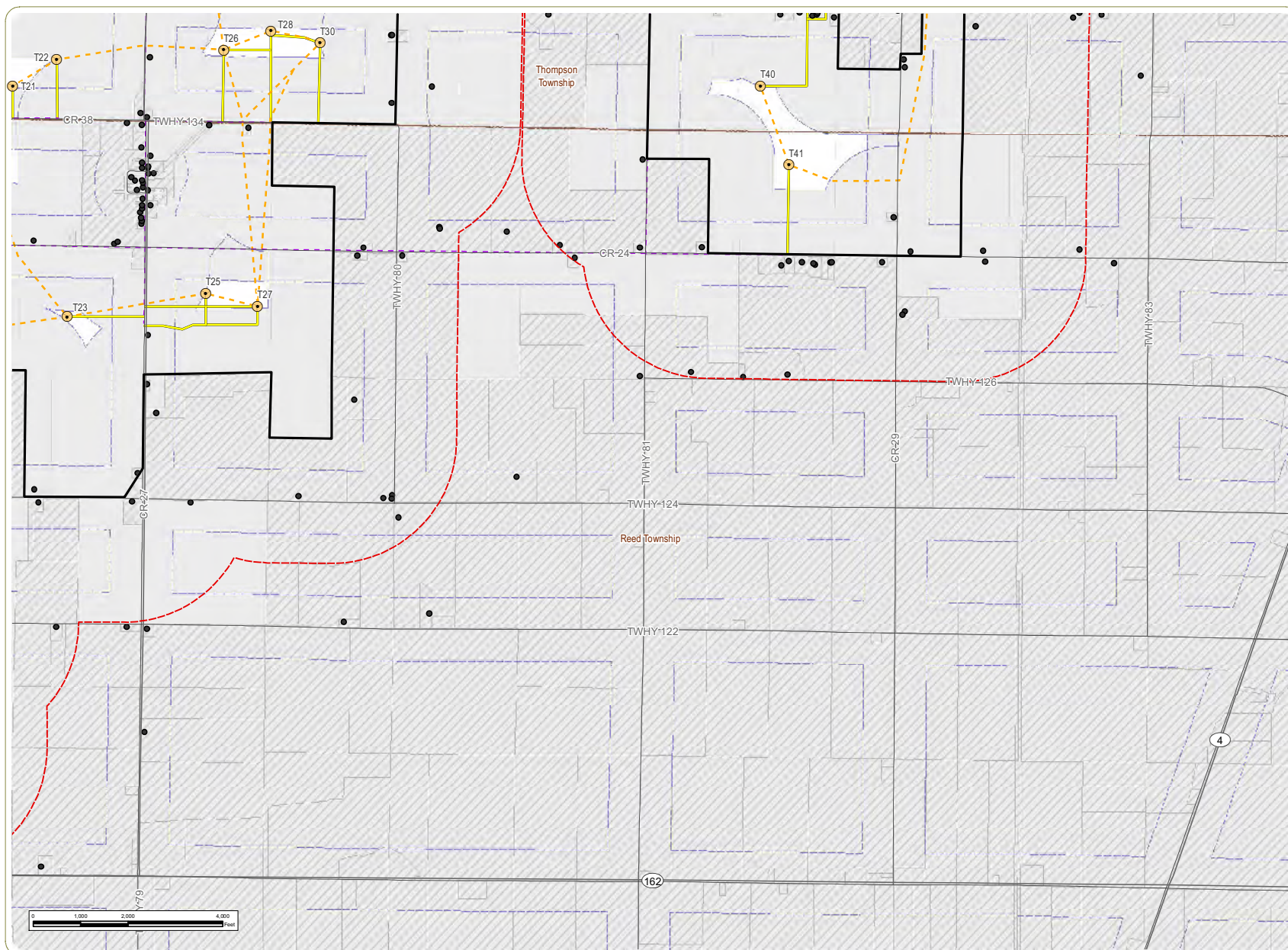


Sheet 7 of 8

Notes: 1. Basemap: Ohio Department of Transportation. 2. This map was generated in ArcMap on December 13, 2018. 3. This is a color graphic. Reproduction in grayscale may misrepresent the data. 4. Facility components, parcel boundaries, and pipeline data provided by Apex. 5. Wind turbine setbacks include 1,371 feet from non-participating parcels and 662.2 feet from existing pipelines, transmission lines, and public roads. 6. A survey will be conducted to inform final Facility design, and to verify the precise location of gas pipelines. The exact turbine locations may be subject to minor engineering revisions (micro-siting) prior to construction. Any such micro-siting will comply with state laws and regulations (including all applicable setbacks), be compatible with landowner preferences, and be presented at the preconstruction meeting with OPSB. 7. Map Scale 1: 24,000.



www.edrdpc.com



Republic Wind Farm

Adams, Pleasant, Reed, Scipio, and Thompson Townships, Seneca County, and York Township, Sandusky County, Ohio
Figure 08-6: Wind Turbine Setbacks

- Wind Turbine
- Habitable Residence
- Access Road
- - - Collection Line
- - - Local Delivery Route
- Public Road
- 662 Foot Setback From Utilities
- 1,371 Foot Setback From Non-Participating Parcels
- Nonparticipating Parcel
- Parcel Boundary
- Project Boundary
- Half Mile Study Area
- Township Boundary
- County Boundary

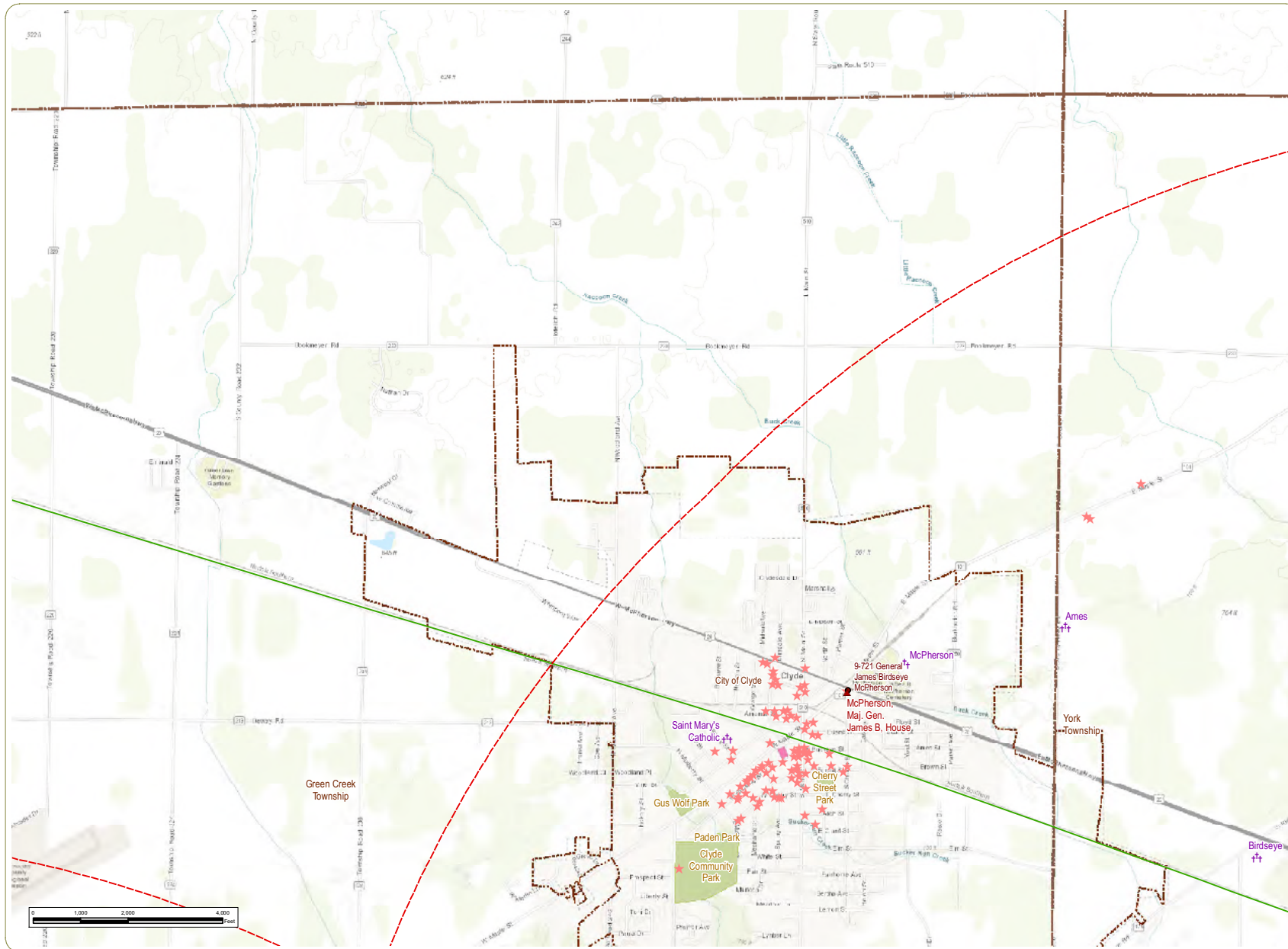


Sheet 8 of 8

Notes: 1. Basemap: Ohio Department of Transportation. 2. This map was generated in ArcMap on December 13, 2018. 3. This is a color graphic. Reproduction in grayscale may misrepresent the data. 4. Facility components, parcel boundaries, and pipeline data provided by Apex. 5. Wind turbine setbacks include 1,371 feet from non-participating parcels and 662.2 feet from existing pipelines, transmission lines, and public roads. 6. A survey will be conducted to inform final Facility design, and to verify the precise location of gas pipelines. The exact turbine locations may be subject to minor engineering revisions (micro-siting) prior to construction. Any such micro-siting will comply with state laws and regulations (including all applicable setbacks), be compatible with landowner preferences, and be presented at the preconstruction meeting with OPSB. 7. Map Scale 1: 24,000.



www.edrdpc.com

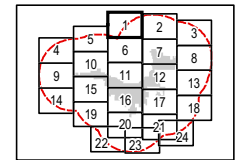


Republic Wind Farm

Adams, Pleasant, Reed, Scipio, and Thompson Townships, Seneca County, and York Township, Sandusky County, Ohio

Figure 08-7: Cultural Resources

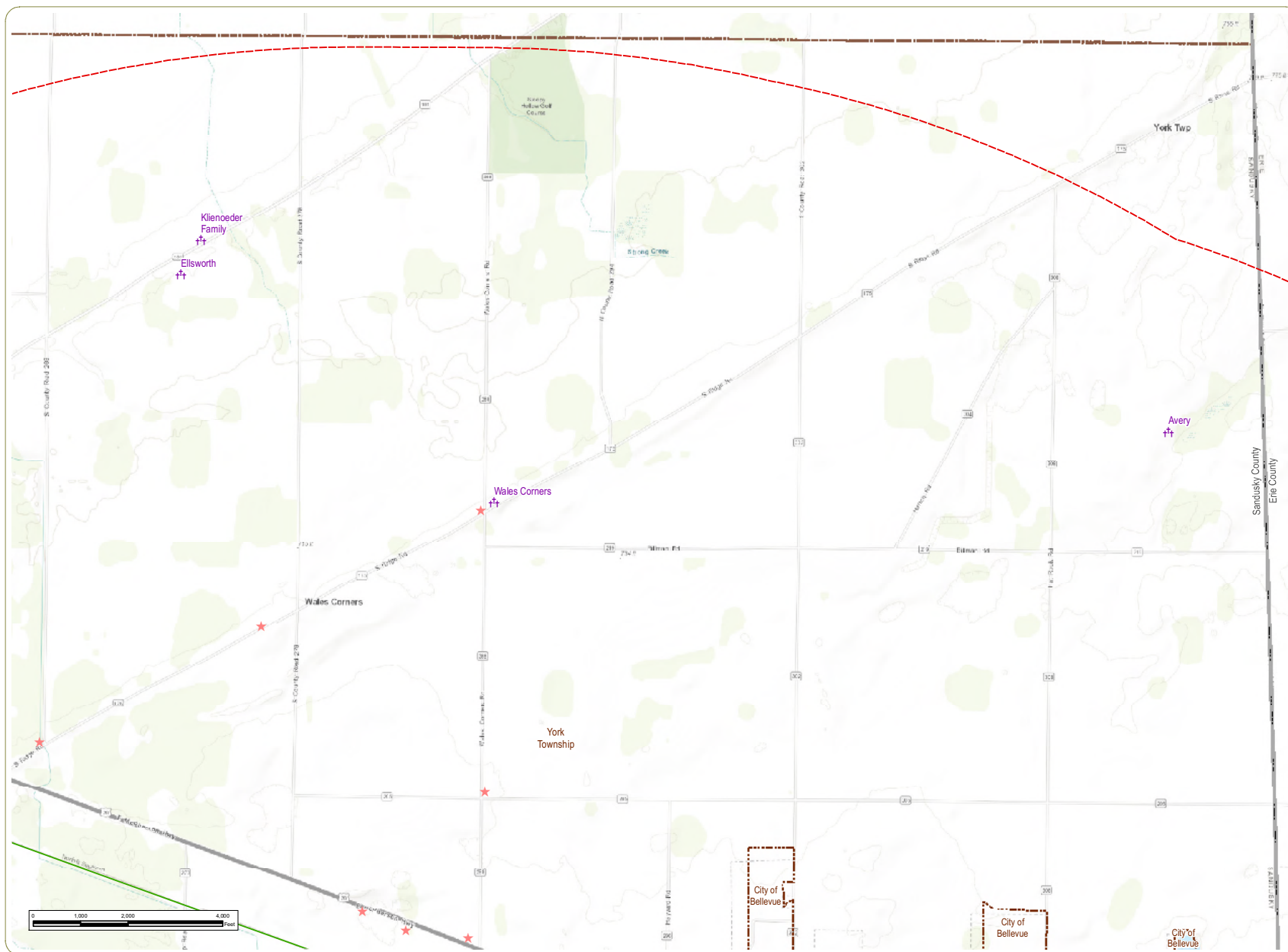
- State Historic Marker
- ★ OHI Historic Structure
- ✕ Cemetery
- ▲ NRHP-Listed Site
- Bike Route
- Local Park
- NRHP-Eligible Site
- 5 Mile Study Area
- City/Village Boundary
- Township Boundary
- County Boundary



Sheet 1 of 24

Notes: 1. Basemap/ESRI ArcGIS Online "World Topographic Map" map service. 2. This map was generated in ArcMap on December 13, 2018. 3. This is a color graphic. Reproduction in grayscale may misrepresent the data. 4. Archaeological sites were evaluated for this project, but not displayed on this figure due to confidentiality. 5. Facility components were provided by Apex and cultural resources data are provided by EDR. 6. Map Scale 1:24,000.



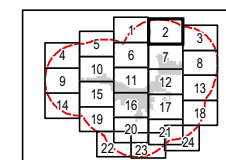


Republic Wind Farm

Adams, Pleasant, Reed, Scipio, and Thompson Townships, Seneca County, and York Township, Sandusky County, Ohio

Figure 08-7: Cultural Resources

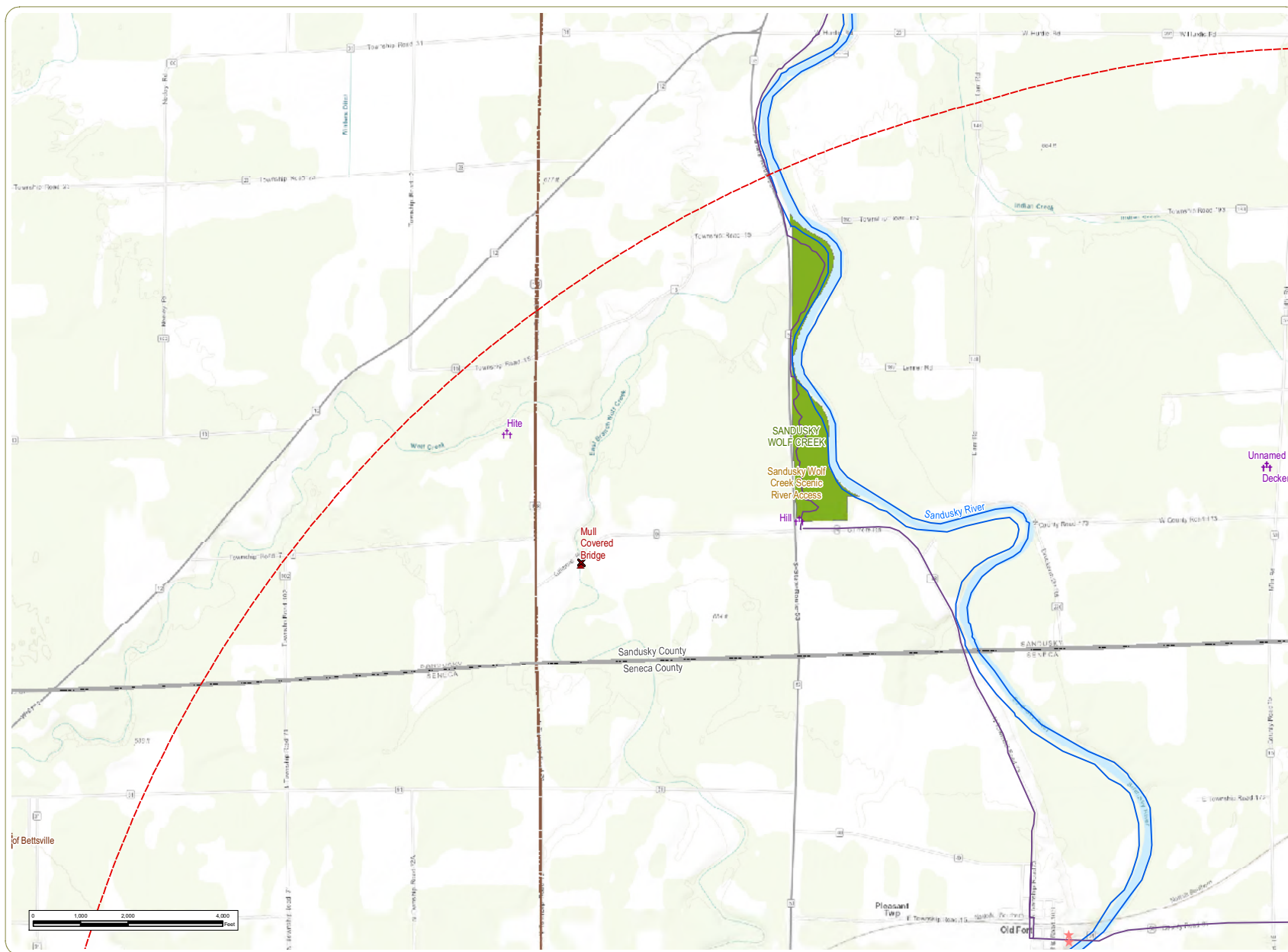
- ★ OH Historic Structure
- ✚ Cemetery
- Bike Route
- ▭ 5 Mile Study Area
- ▭ City/Village Boundary
- ▭ Township Boundary
- ▭ County Boundary



Sheet 2 of 24

Notes: 1. Basemap/ESRI ArcGIS Online "World Topographic Map" map service. 2. This map was generated in ArcMap on December 13, 2018. 3. This is a color graphic. Reproduction in grayscale may misrepresent the data. 4. Archaeological sites were evaluated for this project, but not displayed on this figure due to confidentiality. 5. Facility components were provided by Apex and cultural resources data are provided by EDR. 6. Map Scale 1:24,000.



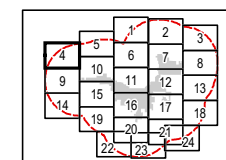


Republic Wind Farm

Adams, Pleasant, Reed, Scipio, and Thompson Townships, Seneca County, and York Township, Sandusky County, Ohio

Figure 08-7: Cultural Resources

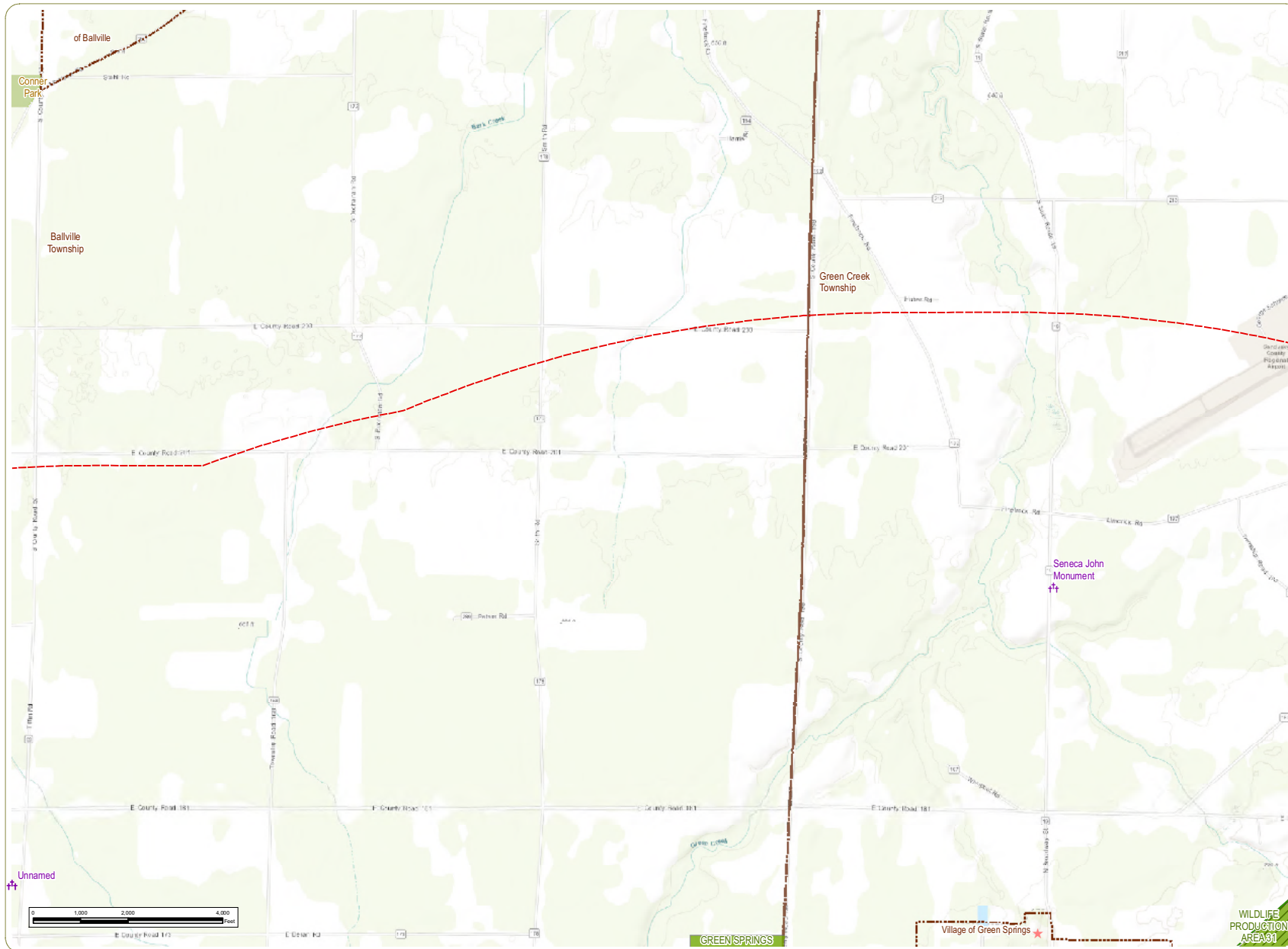
- ★ OHI Historic Structure
- ✚ Cemetery
- ✕ NRHP-Listed Historic Bridge
- ✕ NRHP-Eligible Historic Bridge
- ▲ NRHP-Listed Site
- Buckeye Trail
- Wild or Scenic River
- Local Park
- ODNR Land
- 5 Mile Study Area
- City/Village Boundary
- Township Boundary
- County Boundary



Sheet 4 of 24

Notes: 1. Basemap/ESRI ArcGIS Online "World Topographic Map" map service. 2. This map was generated in ArcMap on December 13, 2018. 3. This is a color graphic. Reproduction in grayscale may misrepresent the data. 4. Archaeological sites were evaluated for this project, but not displayed on this figure due to confidentiality. 5. Facility components were provided by Apex and cultural resources data are provided by EDR. 6. Map Scale 1:24,000.



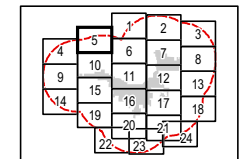


Republic Wind Farm

Adams, Pleasant, Reed, Scipio, and Thompson Townships, Seneca County, and York Township, Sandusky County, Ohio

Figure 08-7: Cultural Resources

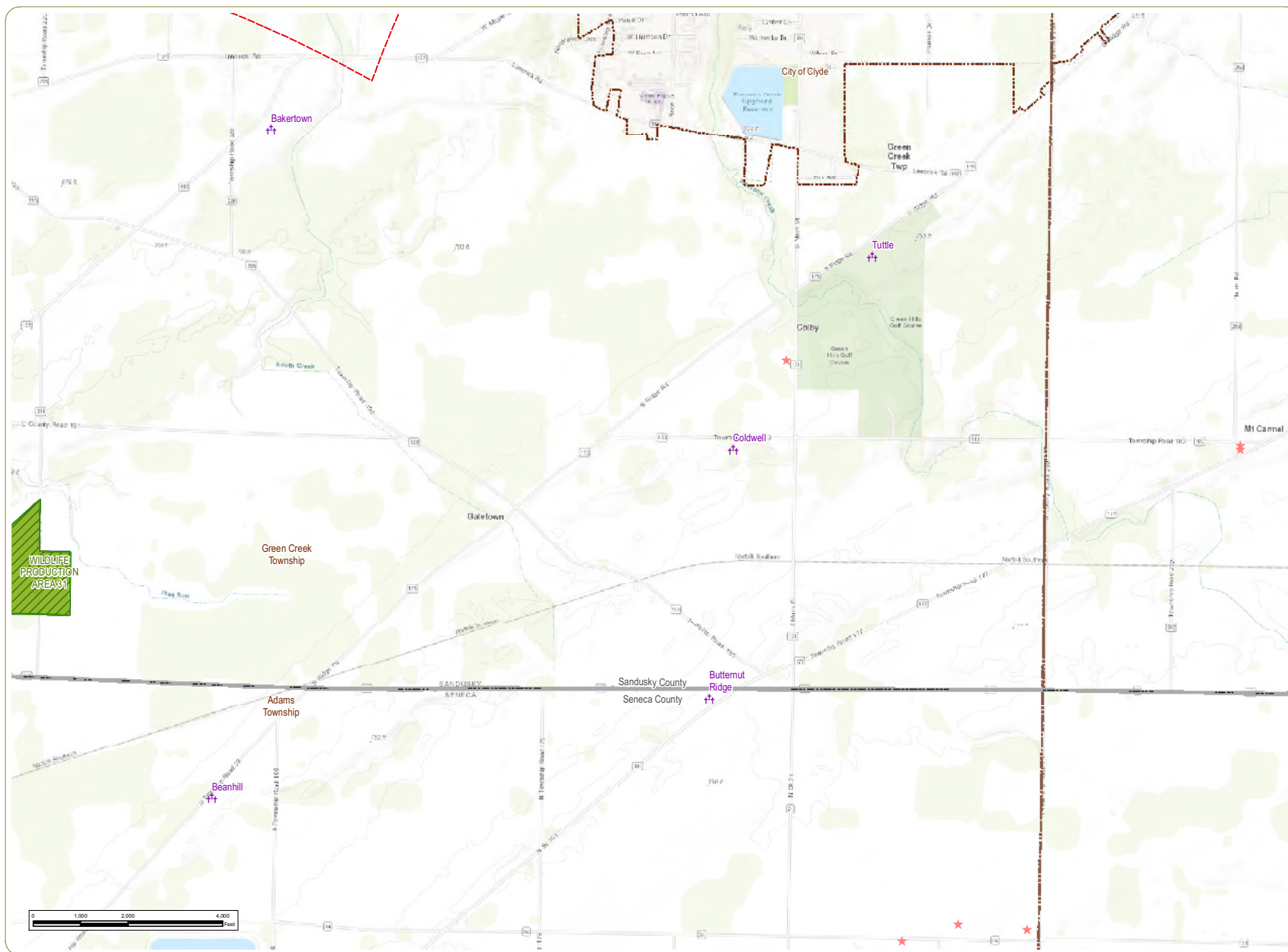
- ★ OHI Historic Structure
- ✚ Cemetery
- Local Park
- State WMA
- ODNR Land
- 5 Mile Study Area
- City/Village Boundary
- Township Boundary
- County Boundary



Sheet 5 of 24

Notes: 1. Basemap/ESRI ArcGIS Online "World Topographic Map" map service. 2. This map was generated in ArcMap on December 13, 2018. 3. This is a color graphic. Reproduction in grayscale may misrepresent the data. 4. Archaeological sites were evaluated for this project, but not displayed on this figure due to confidentiality. 5. Facility components were provided by Apex and cultural resources data are provided by EDR. 6. Map Scale 1:24,000.



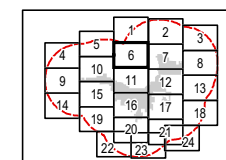


Republic Wind Farm

Adams, Pleasant, Reed, Scipio, and Thompson Townships, Seneca County, and York Township, Sandusky County, Ohio

Figure 08-7: Cultural Resources

- ★ OHI Historic Structure
- ✚ Cemetery
- ▨ State WMA
- ▨ ODNR Land
- ▨ 5 Mile Study Area
- ▨ City/Village Boundary
- ▨ Township Boundary
- ▨ County Boundary



Sheet 6 of 24

Notes: 1. Basemap/ESRI ArcGIS Online "World Topographic Map" map service. 2. This map was generated in ArcMap on December 13, 2018. 3. This is a color graphic. Reproduction in grayscale may misrepresent the data. 4. Archaeological sites were evaluated for this project, but not displayed on this figure due to confidentiality. 5. Facility components were provided by Apex and cultural resources data are provided by EDR. 6. Map Scale 1:24,000.



www.edrdpc.com

This foregoing document was electronically filed with the Public Utilities

Commission of Ohio Docketing Information System on

12/26/2018 11:50:27 AM

in

Case No(s). 17-2295-EL-BGN

Summary: Application Figures 08-5 and 08-7 Part 1 electronically filed by Teresa Orahod on behalf of Dylan F. Borchers