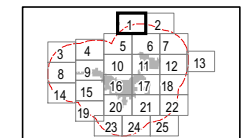


Republic Wind Farm

Adams, Pleasant, Reed, Scipio, and Thompson Townships, Seneca County, and York Township, Sandusky County, Ohio

Figure 07-1: Aviation Facilities

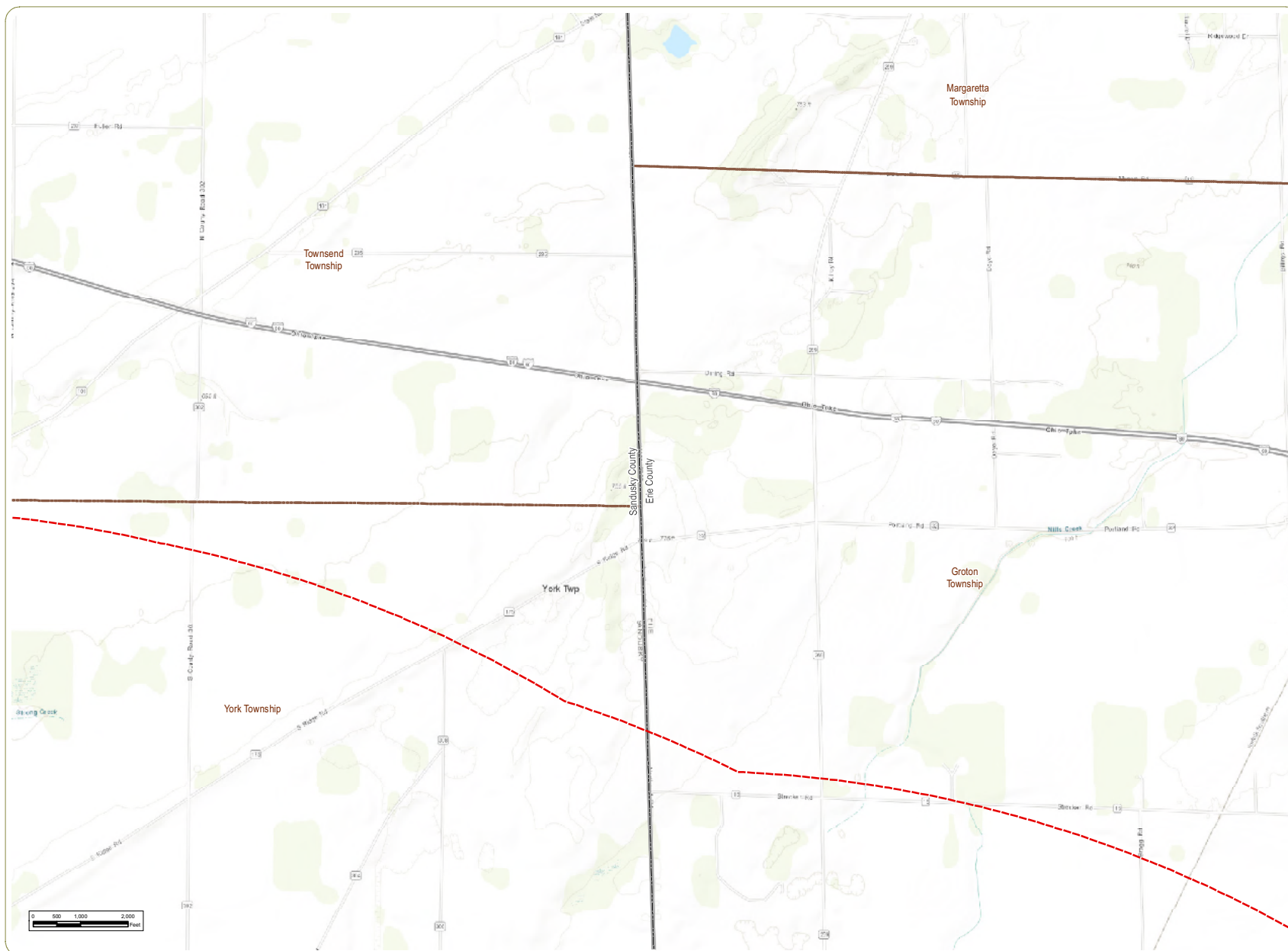
- 5 Mile Study Area
- Township Boundary
- County Boundary



Sheet 1 of 25

Notes: 1. Basemap: ESRI ArcGIS Online "World Topographic Map" map service. 2. This map was generated in ArcMap on December 13, 2018. 3. This is a color graphic. Reproduction in grayscale may misrepresent the data. 4. Project Boundary provided by Apex; aviation features obtained from Ohio State GIS server. 5. Map Scale 1:24,000.



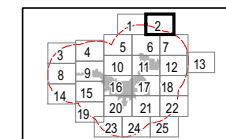


Republic Wind Farm

Adams, Pleasant, Reed, Scipio, and Thompson Townships, Seneca County, and York Township, Sandusky County, Ohio

Figure 07-1: Aviation Facilities

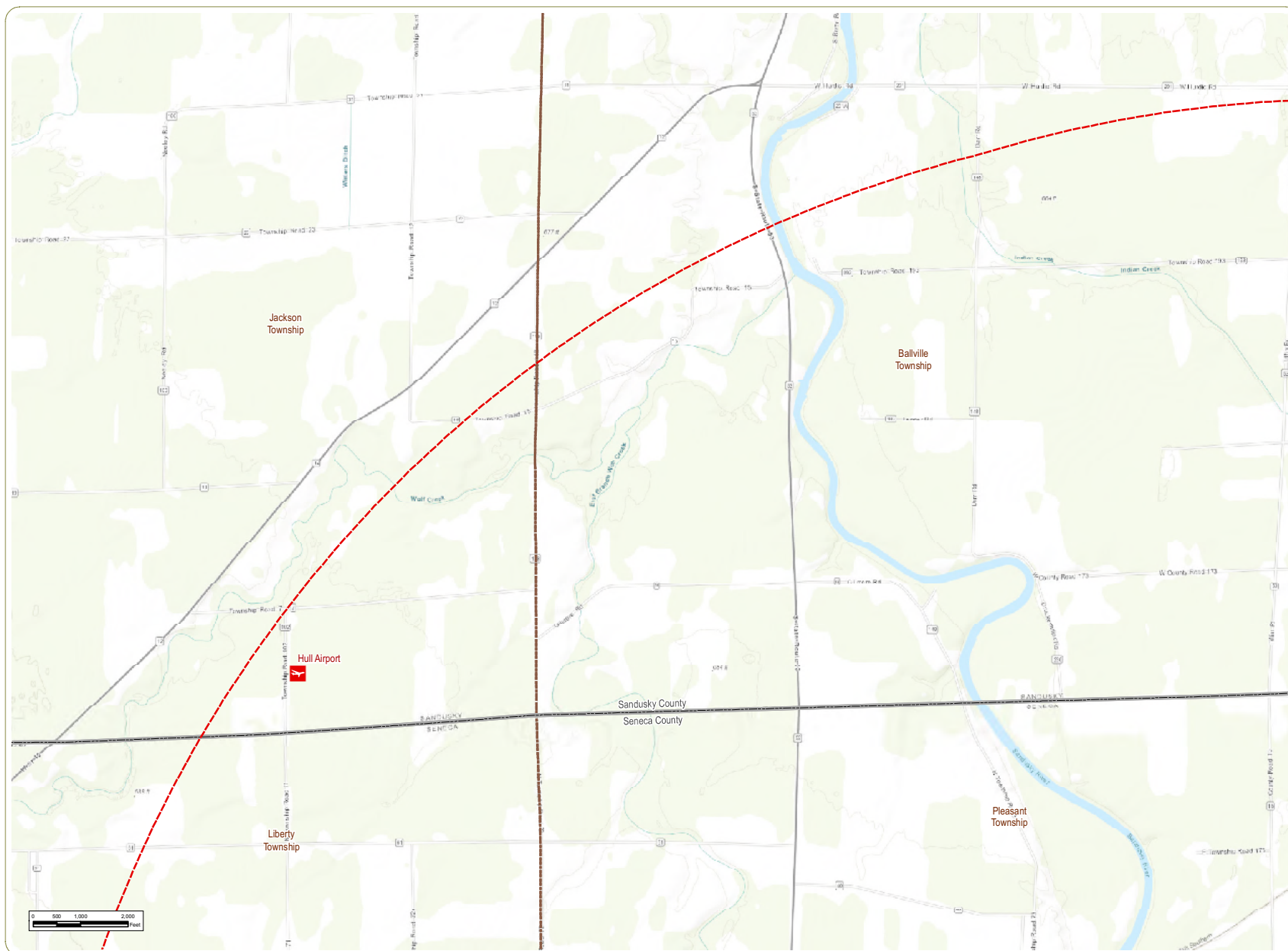
- 5 5 Mile Study Area
- T Township Boundary
- C County Boundary



Sheet 2 of 25

Notes: 1. Basemap: ESRI ArcGIS Online "World Topographic Map" map service.
2. This map was generated in ArcMap on December 13, 2018. 3. This is a color graphic. Reproduction in grayscale may misrepresent the data. 4. Project Boundary provided by Apex; aviation features obtained from Ohio State GIS server. 5. Map Scale 1:24,000.



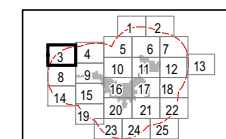


Republic Wind Farm

Adams, Pleasant, Reed, Scipio, and Thompson Townships, Seneca County, and York Township, Sandusky County, Ohio

Figure 07-1: Aviation Facilities

- Private Airport
- 5 Mile Study Area
- Township Boundary
- County Boundary

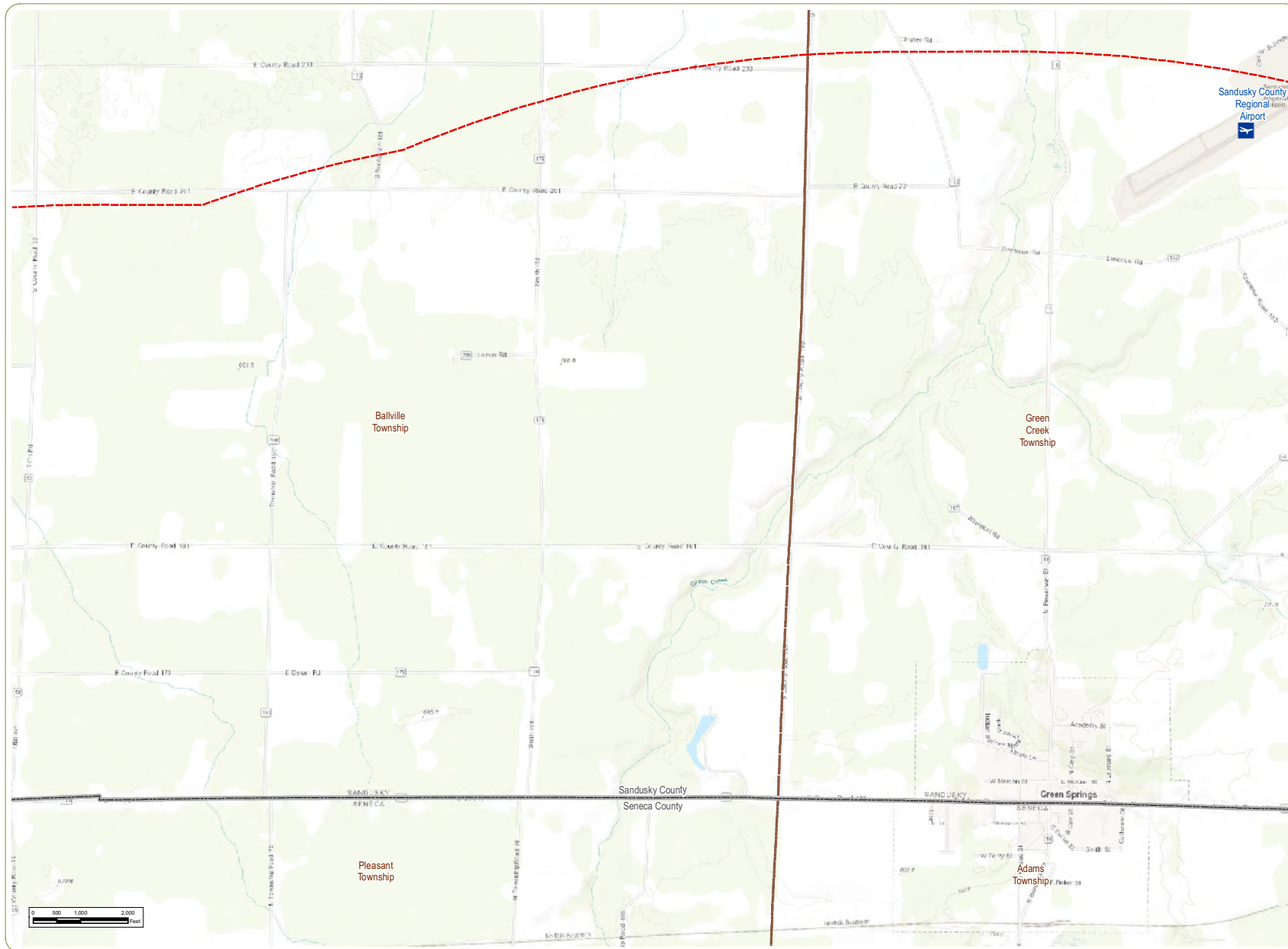


Sheet 3 of 25

Notes: 1. Basemap: ESRI ArcGIS Online "World Topographic Map" map service.
2. This map was generated in ArcMap on December 13, 2018. 3. This is a color graphic. Reproduction in grayscale may misrepresent the data. 4. Project Boundary provided by Apex; aviation features obtained from Ohio State GIS server. 5. Map Scale 1:24,000.



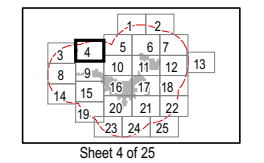
www.edrdpc.com



Republic Wind Farm Adams, Pleasant, Reed, Scipio, and Thompson Townships, Seneca County, and York Township, Sandusky County, Ohio

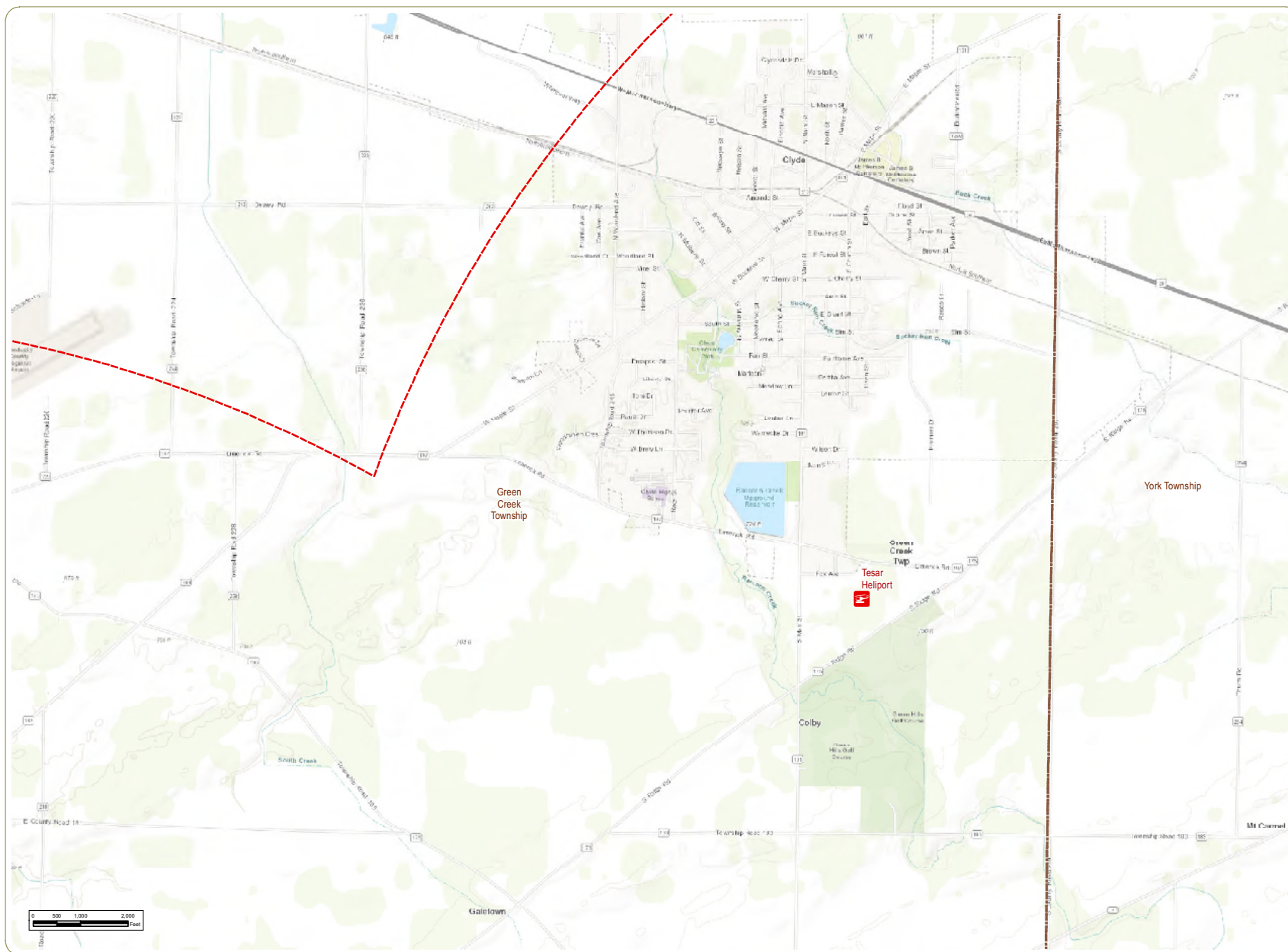
Figure 07-1: Aviation Facilities

- Public Airport
- 5 Mile Study Area
- Township Boundary
- County Boundary



Notes: 1. Basemap: ESRI ArcGIS Online "World Topographic Map" map service. 2. This map was generated in ArcMap on December 13, 2018. 3. This is a color graphic. Reproduction in grayscale may misrepresent the data. 4. Project Boundary provided by Apex; aviation features obtained from Ohio State GIS server. 5. Map Scale 1: 24,000.



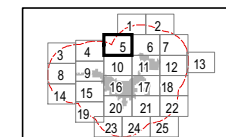


Republic Wind Farm

Adams, Pleasant, Reed, Scipio, and Thompson Townships, Seneca County, and York Township, Sandusky County, Ohio

Figure 07-1: Aviation Facilities

- Private Heliport
- 5 Mile Study Area
- Township Boundary
- County Boundary

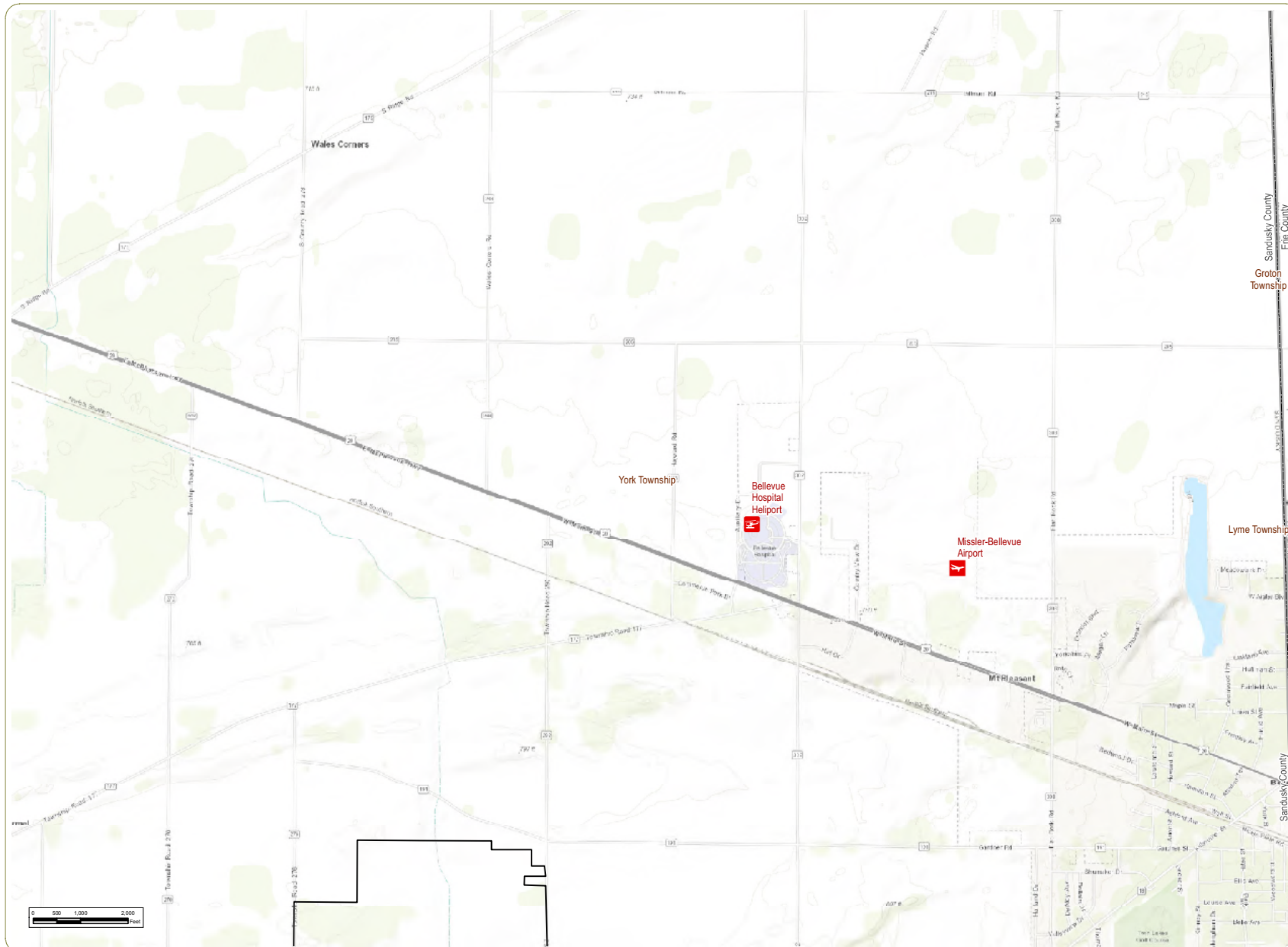


Sheet 5 of 25

Notes: 1. Basemap: ESRI ArcGIS Online "World Topographic Map" map service. 2. This map was generated in ArcMap on December 13, 2018. 3. This is a color graphic. Reproduction in grayscale may misrepresent the data. 4. Project Boundary provided by Apex; aviation features obtained from Ohio State GIS server. 5. Map Scale 1:24,000.



www.edrdpc.com

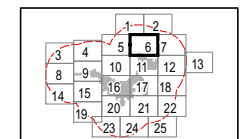


Republic Wind Farm

Adams, Pleasant, Reed, Scipio, and Thompson Townships, Seneca County, and York Township, Sandusky County, Ohio

Figure 07-1: Aviation Facilities

- Private Airport
- Private Helipoint
- Project Boundary
- 5 Mile Study Area
- Township Boundary
- County Boundary

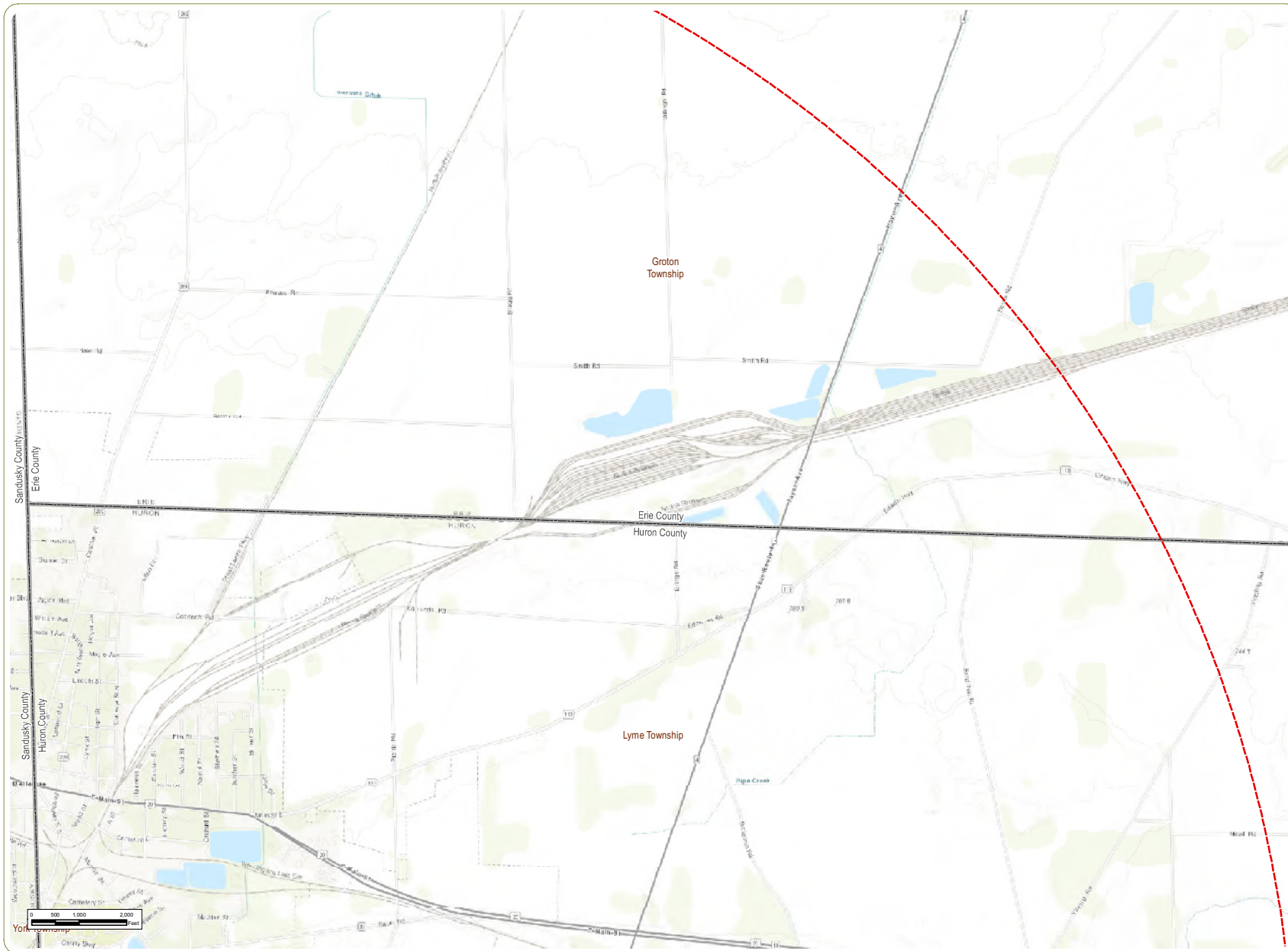


Sheet 6 of 25

Notes: 1. Basemap: ESRI ArcGIS Online "World Topographic Map" map service. 2. This map was generated in ArcMap on December 13, 2018. 3. This is a color graphic. Reproduction in grayscale may misrepresent the data. 4. Project Boundary provided by Apex; aviation features obtained from Ohio State GIS server. 5. Map Scale 1:24,000.



www.edrdpc.com

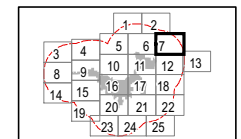


Republic Wind Farm

Adams, Pleasant, Reed, Scipio, and Thompson Townships, Seneca County, and York Township, Sandusky County, Ohio

Figure 07-1: Aviation Facilities

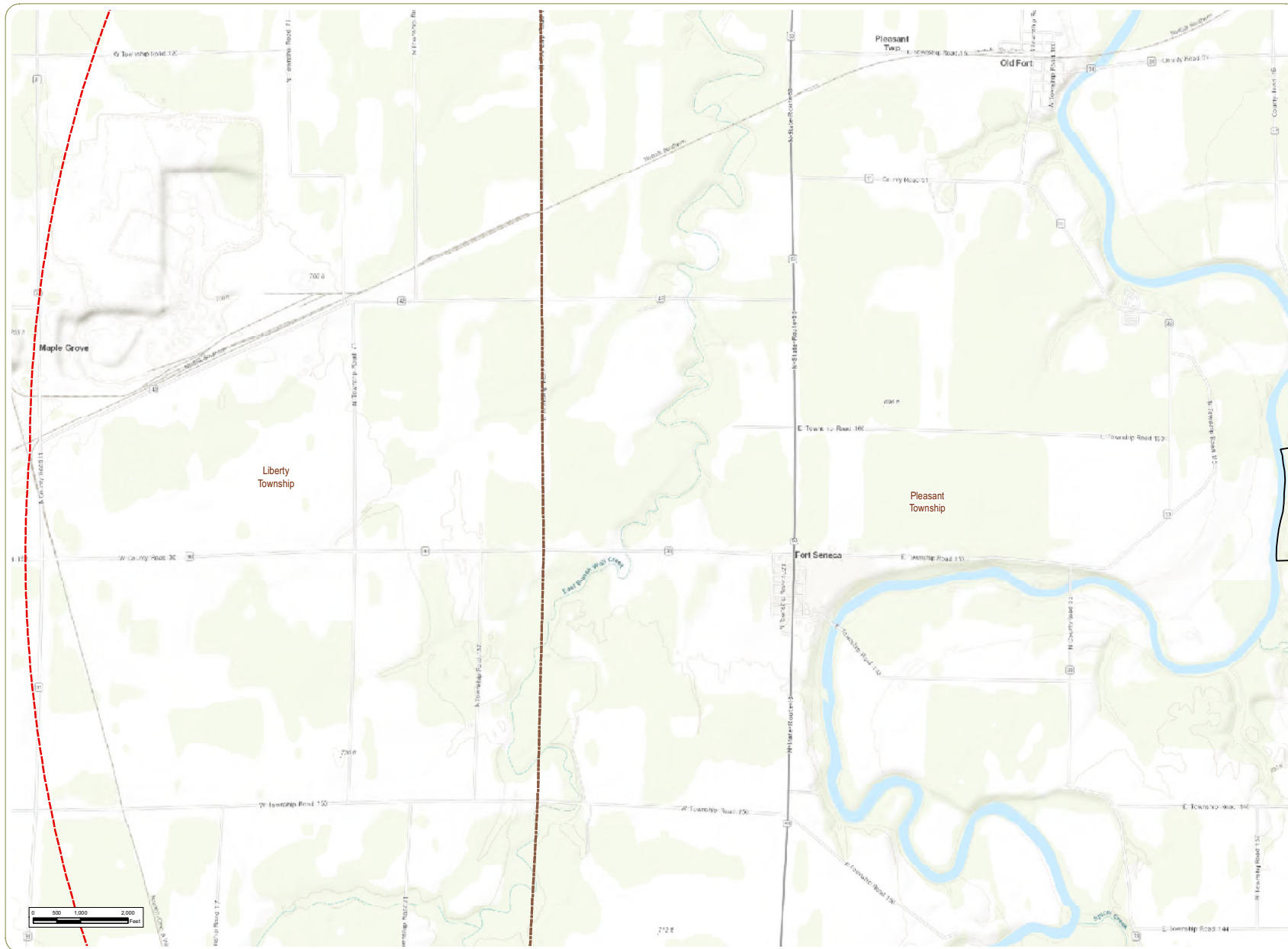
- 5 Mile Study Area
- Township Boundary
- County Boundary



Sheet 7 of 25

Notes: 1. Basemap: ESRI ArcGIS Online "World Topographic Map" map service.
2. This map was generated in ArcMap on December 13, 2018. 3. This is a color graphic. Reproduction in grayscale may misrepresent the data. 4. Project Boundary provided by Apex; aviation features obtained from Ohio State GIS server. 5. Map Scale 1:24,000.



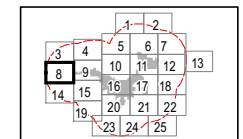


Republic Wind Farm

Adams, Pleasant, Reed, Scipio, and Thompson Townships, Seneca County, and York Township, Sandusky County, Ohio

Figure 07-1: Aviation Facilities

- Project Boundary
- 5 Mile Study Area
- Township Boundary
- County Boundary

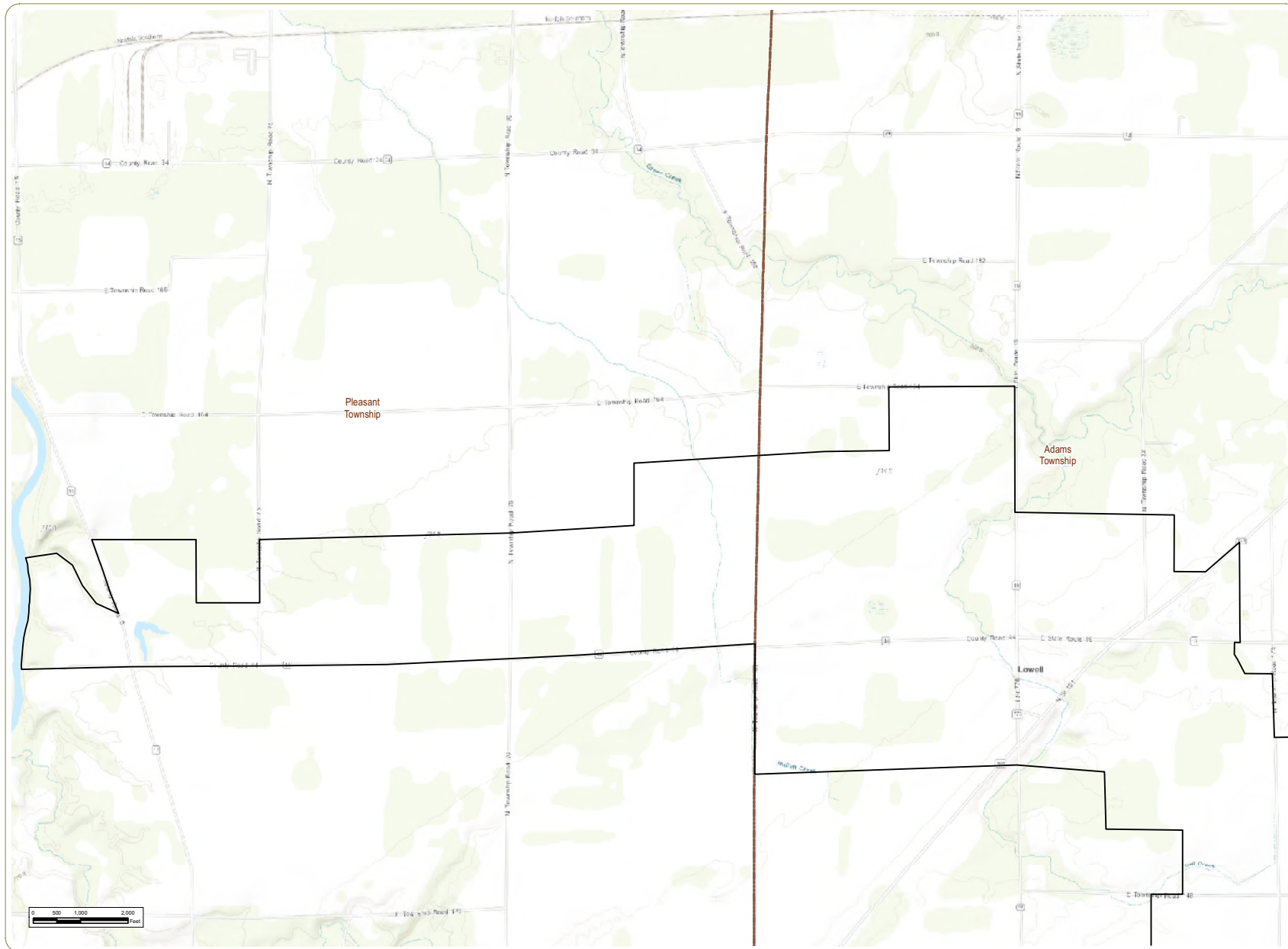


Sheet 8 of 25

Notes: 1. Basemap: ESRI ArcGIS Online "World Topographic Map" map service. 2. This map was generated in ArcMap on December 13, 2018. 3. This is a color graphic. Reproduction in grayscale may misrepresent the data. 4. Project Boundary provided by Apex; aviation features obtained from Ohio State GIS server. 5. Map Scale 1:24,000.



www.edrdpc.com

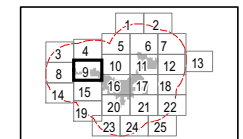


Republic Wind Farm

Adams, Pleasant, Reed, Scipio, and Thompson Townships, Seneca County, and York Township, Sandusky County, Ohio

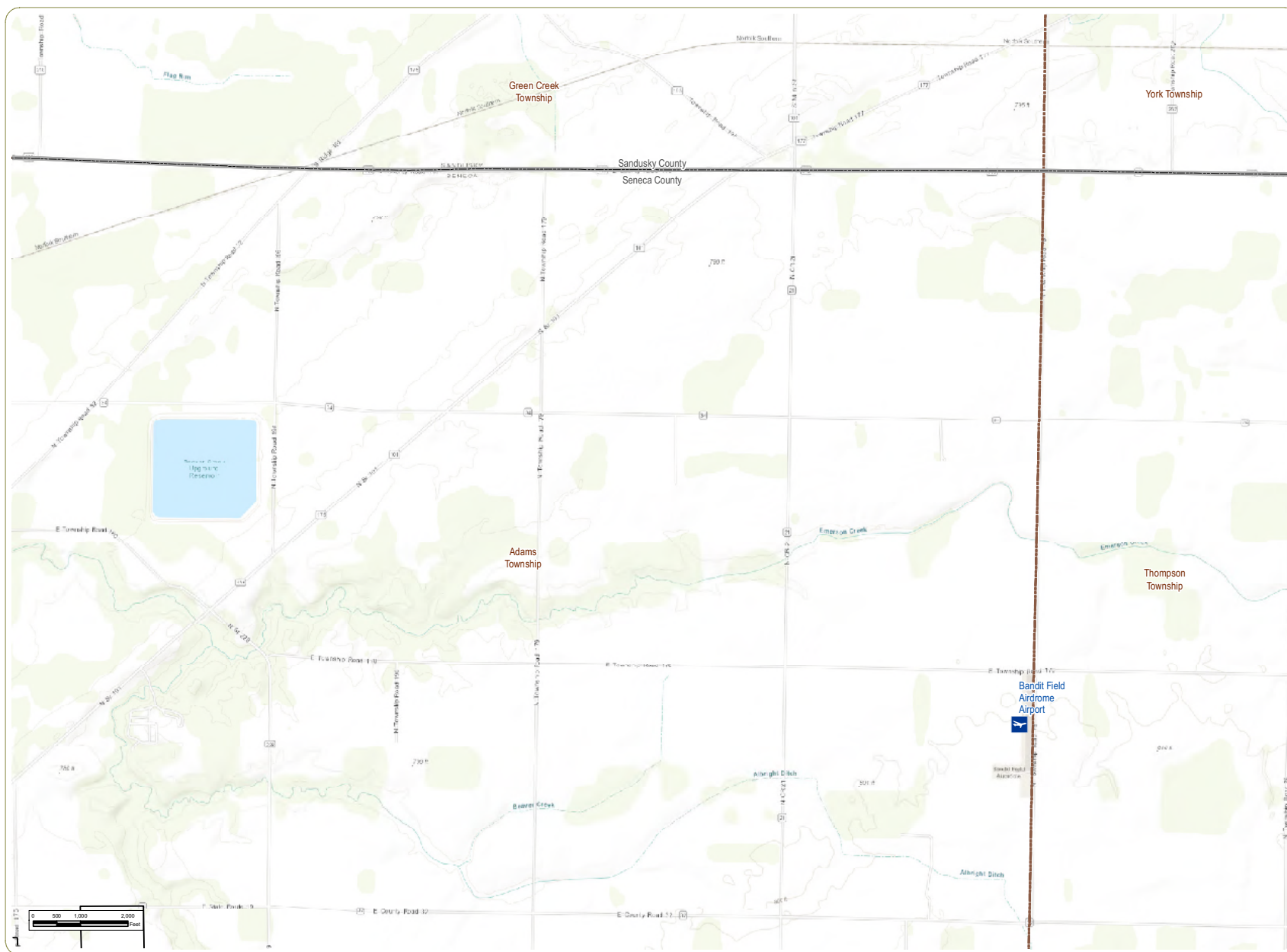
Figure 07-1: Aviation Facilities

- Project Boundary
- 5 Mile Study Area
- Township Boundary
- County Boundary



Notes: 1. Basemap: ESRI ArcGIS Online "World Topographic Map" map service.
2. This map was generated in ArcMap on December 13, 2018. 3. This is a color graphic. Reproduction in grayscale may misrepresent the data. 4. Project Boundary provided by Apex; aviation features obtained from Ohio State GIS server. 5. Map Scale 1:24,000.



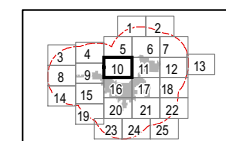


Republic Wind Farm

Adams, Pleasant, Reed, Scipio, and Thompson Townships, Seneca County, and York Township, Sandusky County, Ohio

Figure 07-1: Aviation Facilities

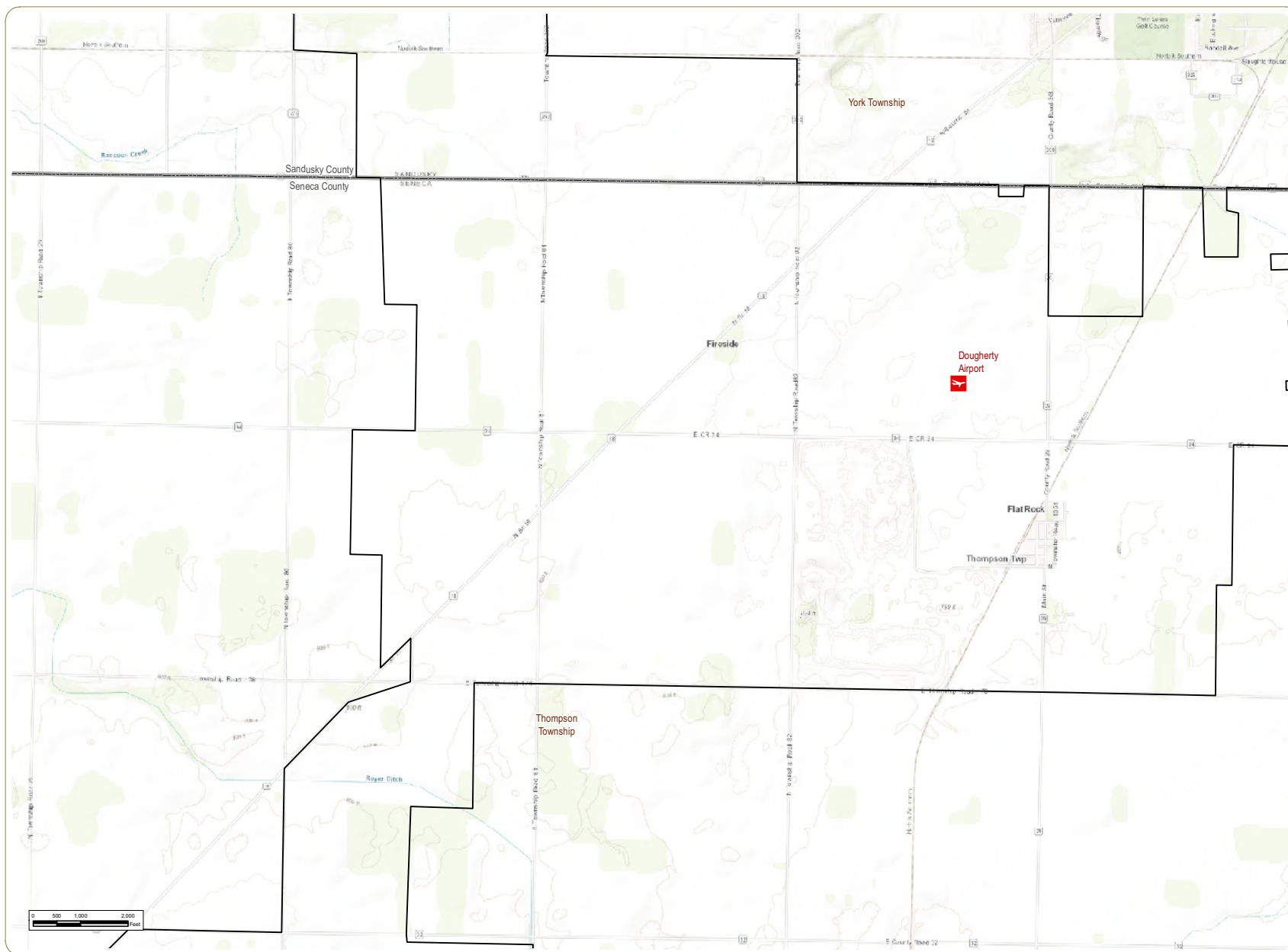
- Public Airport
- Project Boundary
- 5 Mile Study Area
- Township Boundary
- County Boundary



Notes: 1. Basemap: ESRI ArcGIS Online "World Topographic Map" map service.
2. This map was generated in ArcMap on December 13, 2018. 3. This is a color graphic. Reproduction in grayscale may misrepresent the data. 4. Project Boundary provided by Apex; aviation features obtained from Ohio State GIS server. 5. Map Scale 1:24,000.



www.edrdpc.com

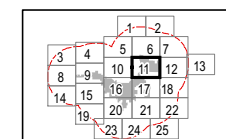


Republic Wind Farm

Adams, Pleasant, Reed, Scipio, and Thompson Townships, Seneca County, and York Township, Sandusky County, Ohio

Figure 07-1: Aviation Facilities

- Private Airport
- Project Boundary
- 5 Mile Study Area
- Township Boundary
- County Boundary

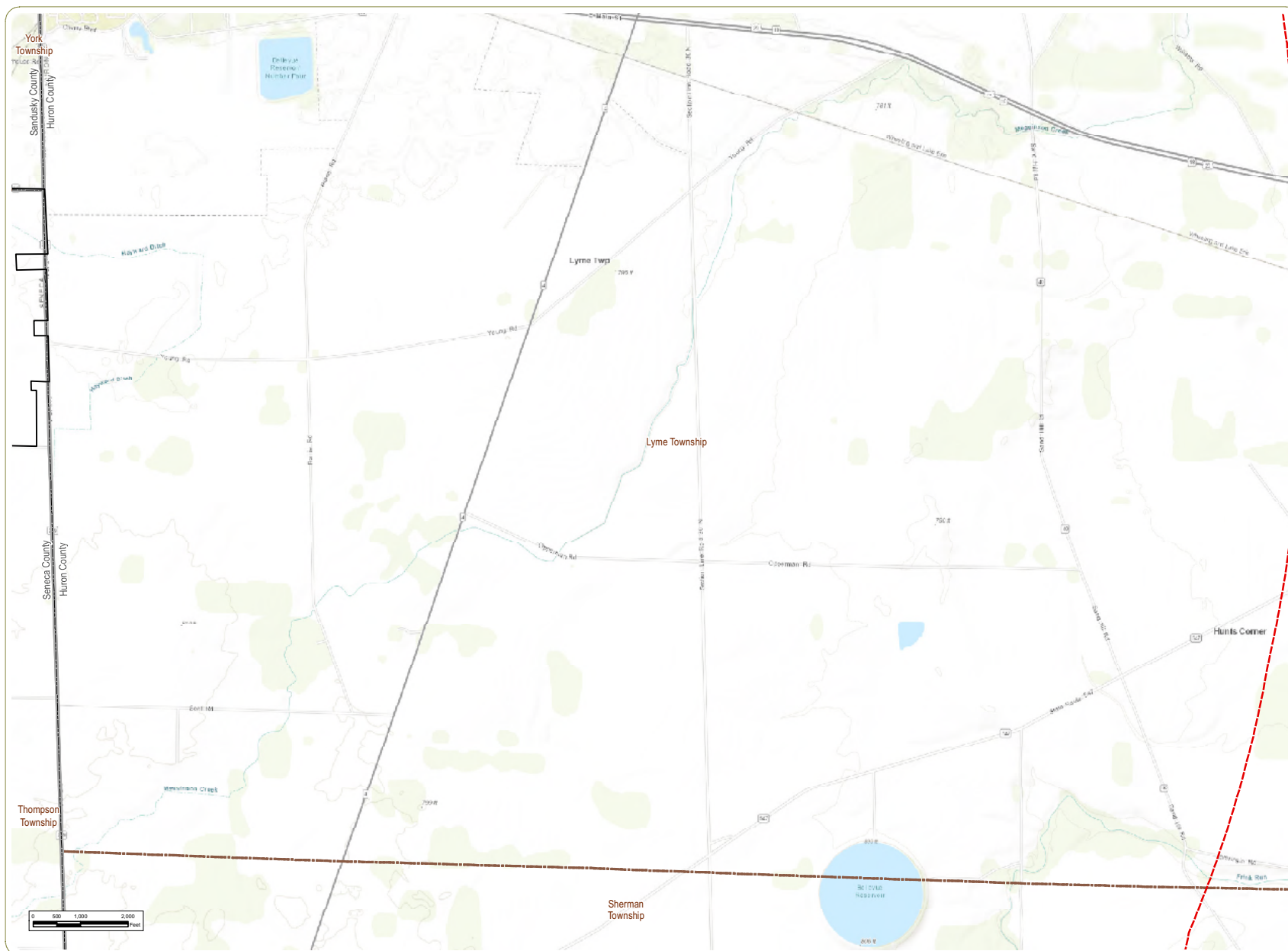


Sheet 11 of 25

Notes: 1. Basemap: ESRI ArcGIS Online "World Topographic Map" map service. 2. This map was generated in ArcMap on December 13, 2018. 3. This is a color graphic. Reproduction in grayscale may misrepresent the data. 4. Project Boundary provided by Apex; aviation features obtained from Ohio State GIS server. 5. Map Scale 1: 24,000.



www.edrdpc.com

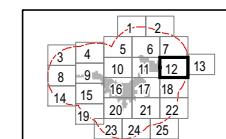


Republic Wind Farm

Adams, Pleasant, Reed, Scipio, and Thompson Townships, Seneca County, and York Township, Sandusky County, Ohio

Figure 07-1: Aviation Facilities

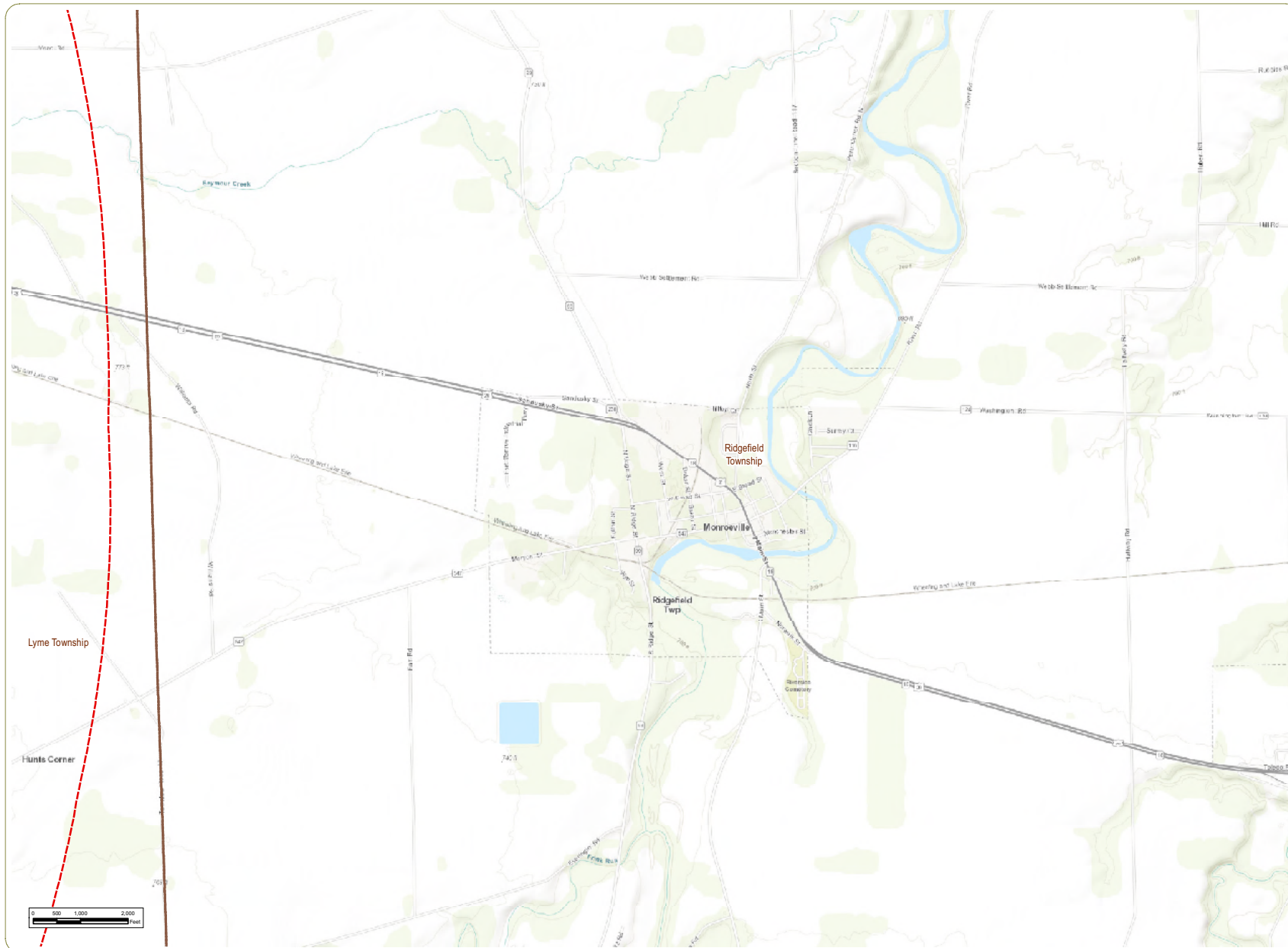
- Project Boundary
- 5 Mile Study Area
- Township Boundary
- County Boundary



Notes: 1. Basemap: ESRI ArcGIS Online "World Topographic Map" map service.
2. This map was generated in ArcMap on December 13, 2018. 3. This is a color graphic. Reproduction in grayscale may misrepresent the data. 4. Project Boundary provided by Apex; aviation features obtained from Ohio State GIS server. 5. Map Scale 1:24,000.



www.edrdpc.com

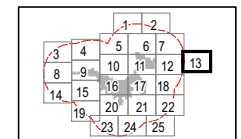


Republic Wind Farm

Adams, Pleasant, Reed, Scipio, and Thompson Townships, Seneca County, and York Township, Sandusky County, Ohio

Figure 07-1: Aviation Facilities

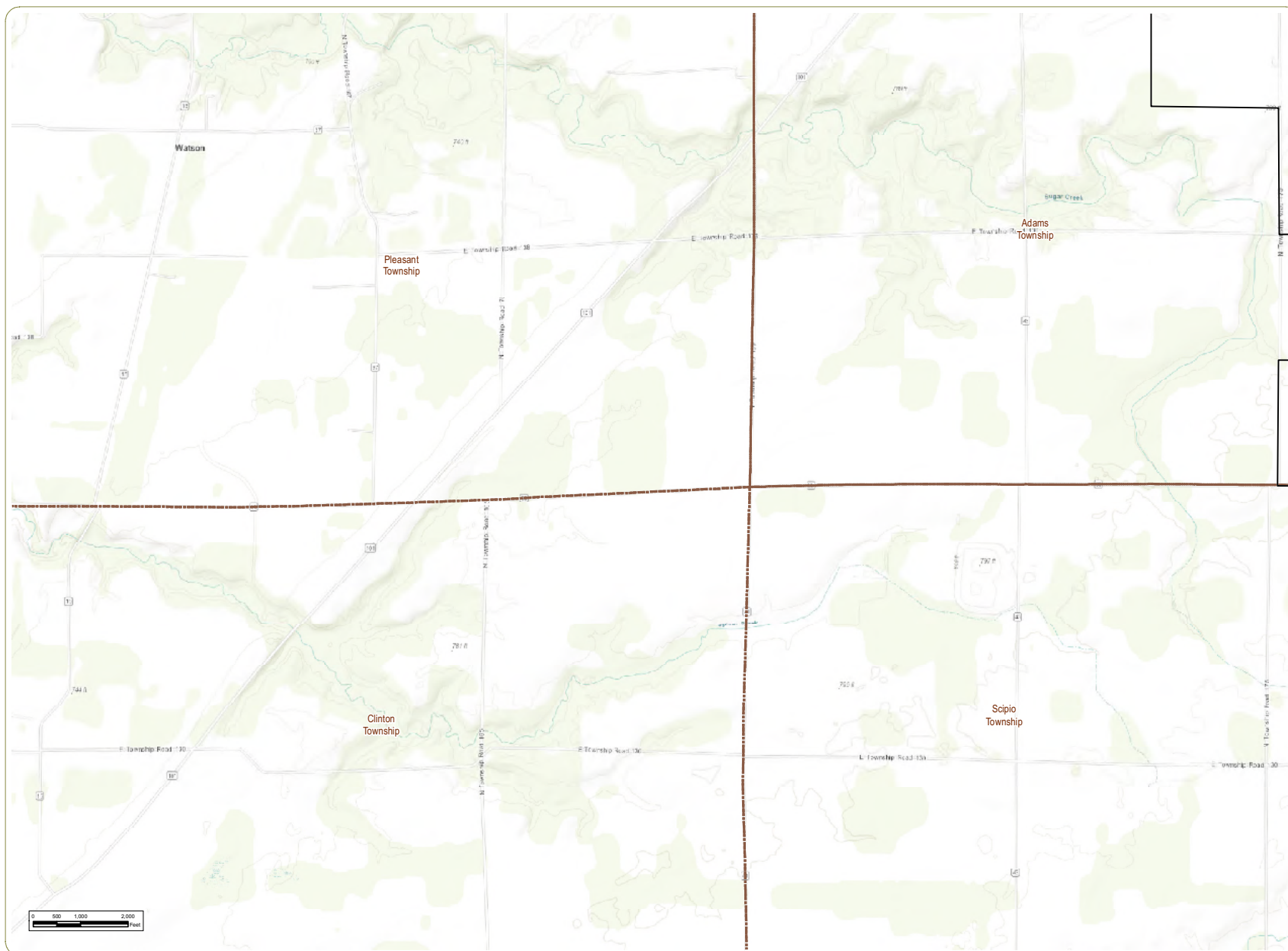
- 5 5 Mile Study Area
- T Township Boundary
- C County Boundary



Sheet 13 of 25

Notes: 1. Basemap: ESRI ArcGIS Online "World Topographic Map" map service.
2. This map was generated in ArcMap on December 13, 2018. 3. This is a color graphic. Reproduction in grayscale may misrepresent the data. 4. Project Boundary provided by Apex; aviation features obtained from Ohio State GIS server. 5. Map Scale 1: 24,000.



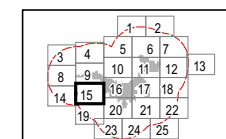


Republic Wind Farm

Adams, Pleasant, Reed,
Scipio, and Thompson
Townships, Seneca County,
and York Township,
Sandusky County, Ohio

**Figure 07-1: Aviation
Facilities**

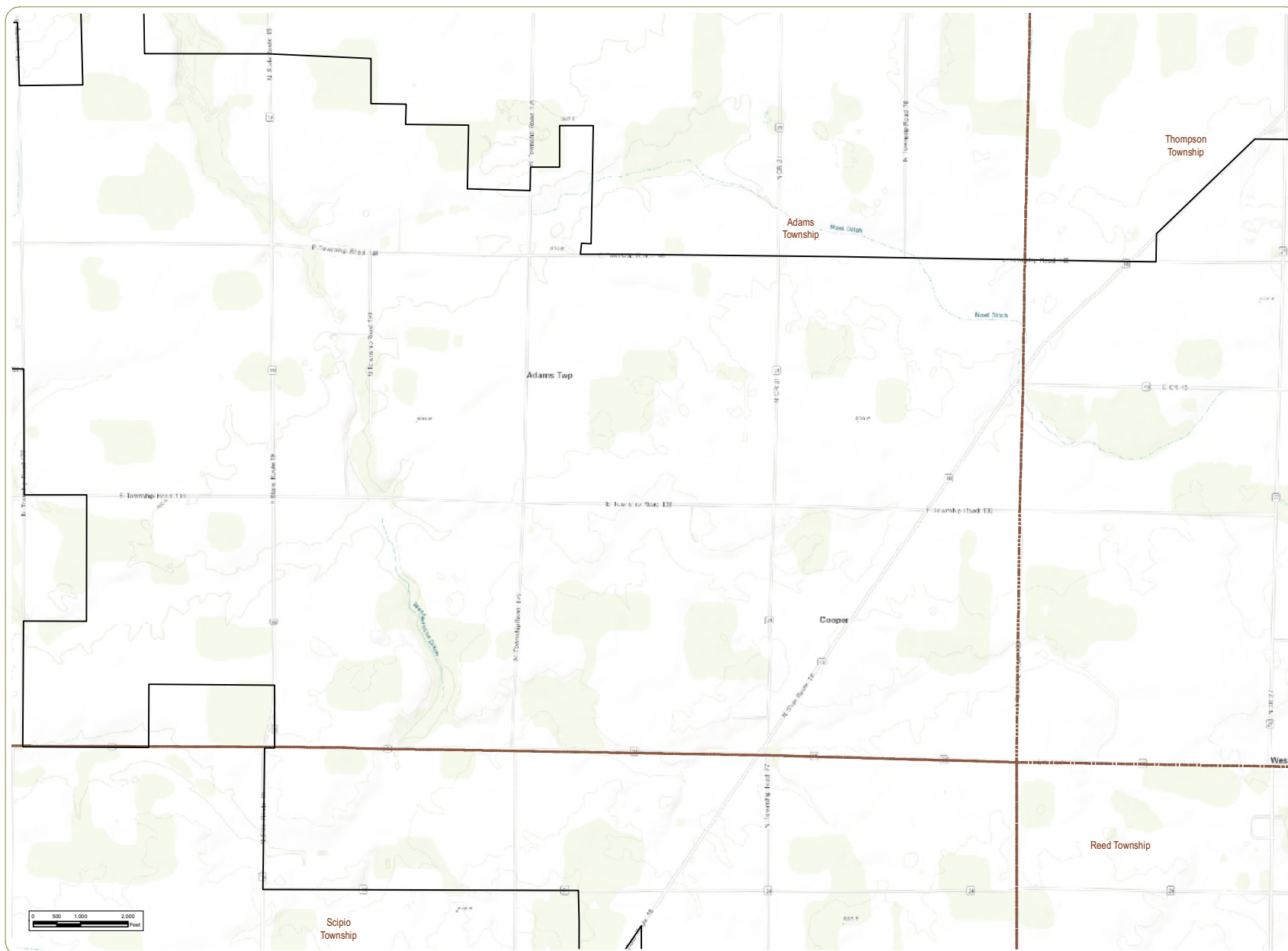
- Project Boundary
- 5 Mile Study Area
- Township Boundary
- County Boundary



Sheet 15 of 25

Notes: 1. Basemap: ESRI ArcGIS Online "World Topographic Map" map service.
2. This map was generated in ArcMap on December 13, 2018. 3. This is a color graphic. Reproduction in grayscale may misrepresent the data. 4. Project Boundary provided by Apex; aviation features obtained from Ohio State GIS server. 5. Map Scale 1:24,000.



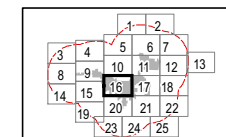


Republic Wind Farm

Adams, Pleasant, Reed,
Scipio, and Thompson
Townships, Seneca County,
and York Township,
Sandusky County, Ohio

**Figure 07-1: Aviation
Facilities**

- Project Boundary
- 5 Mile Study Area
- Township Boundary
- County Boundary

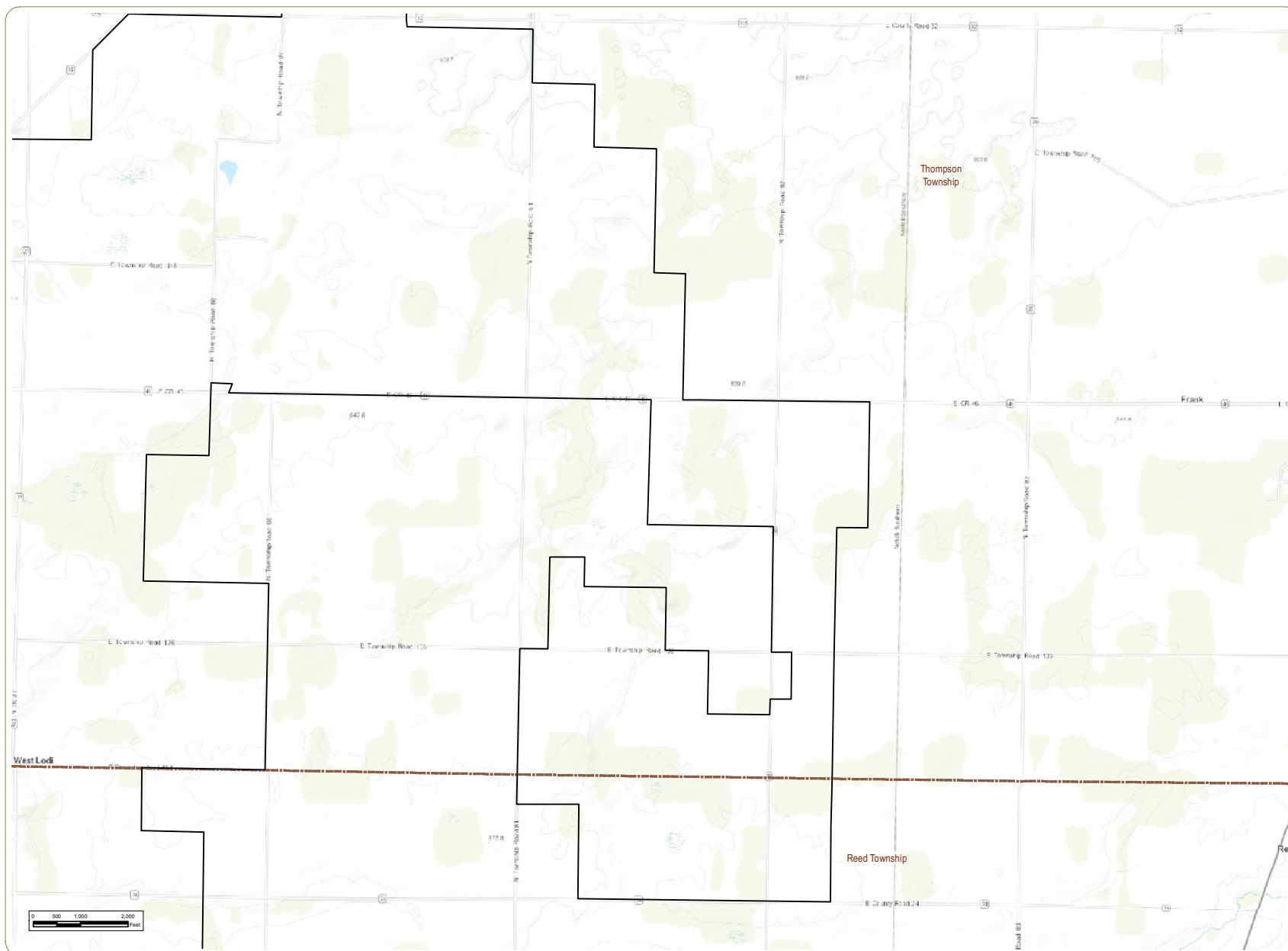


Sheet 16 of 25

Notes: 1. Basemap: ESRI ArcGIS Online "World Topographic Map" map service.
2. This map was generated in ArcMap on December 13, 2018. 3. This is a color graphic. Reproduction in grayscale may misrepresent the data. 4. Project Boundary provided by Apex; aviation features obtained from Ohio State GIS server. 5. Map Scale 1:24,000.



www.edrdpc.com

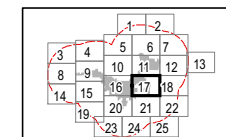


Republic Wind Farm

Adams, Pleasant, Reed,
Scipio, and Thompson
Townships, Seneca County,
and York Township,
Sandusky County, Ohio

**Figure 07-1: Aviation
Facilities**

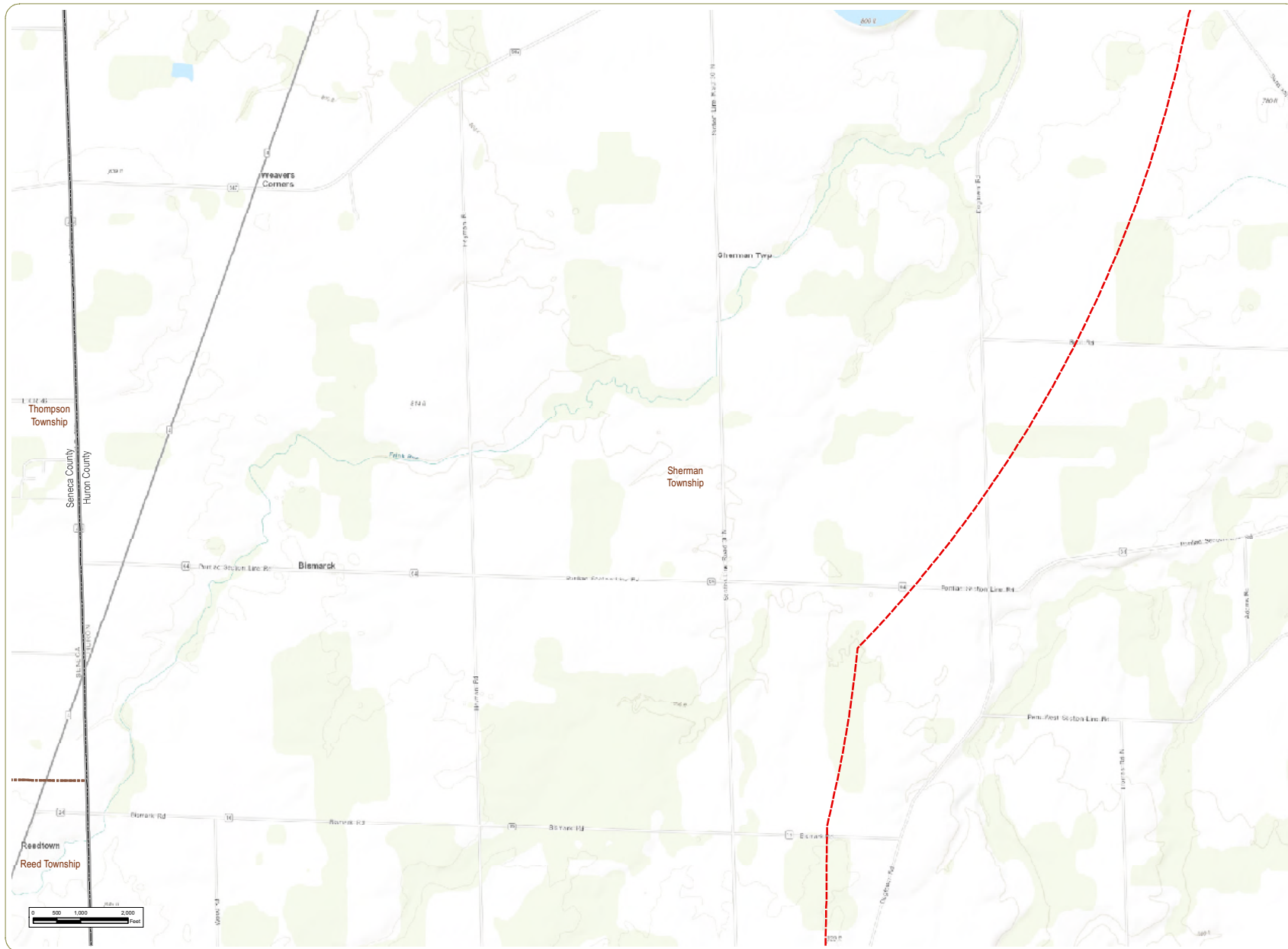
- Project Boundary
- 5 Mile Study Area
- Township Boundary
- County Boundary



Sheet 17 of 25

Notes: 1. Basemap: ESRI ArcGIS Online "World Topographic Map" map service.
2. This map was generated in ArcMap on December 13, 2018. 3. This is a color graphic. Reproduction in grayscale may misrepresent the data. 4. Project Boundary provided by Apex; aviation features obtained from Ohio State GIS server. 5. Map Scale 1:24,000.



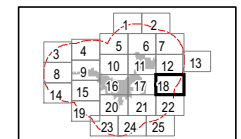


Republic Wind Farm

Adams, Pleasant, Reed, Scipio, and Thompson Townships, Seneca County, and York Township, Sandusky County, Ohio

Figure 07-1: Aviation Facilities

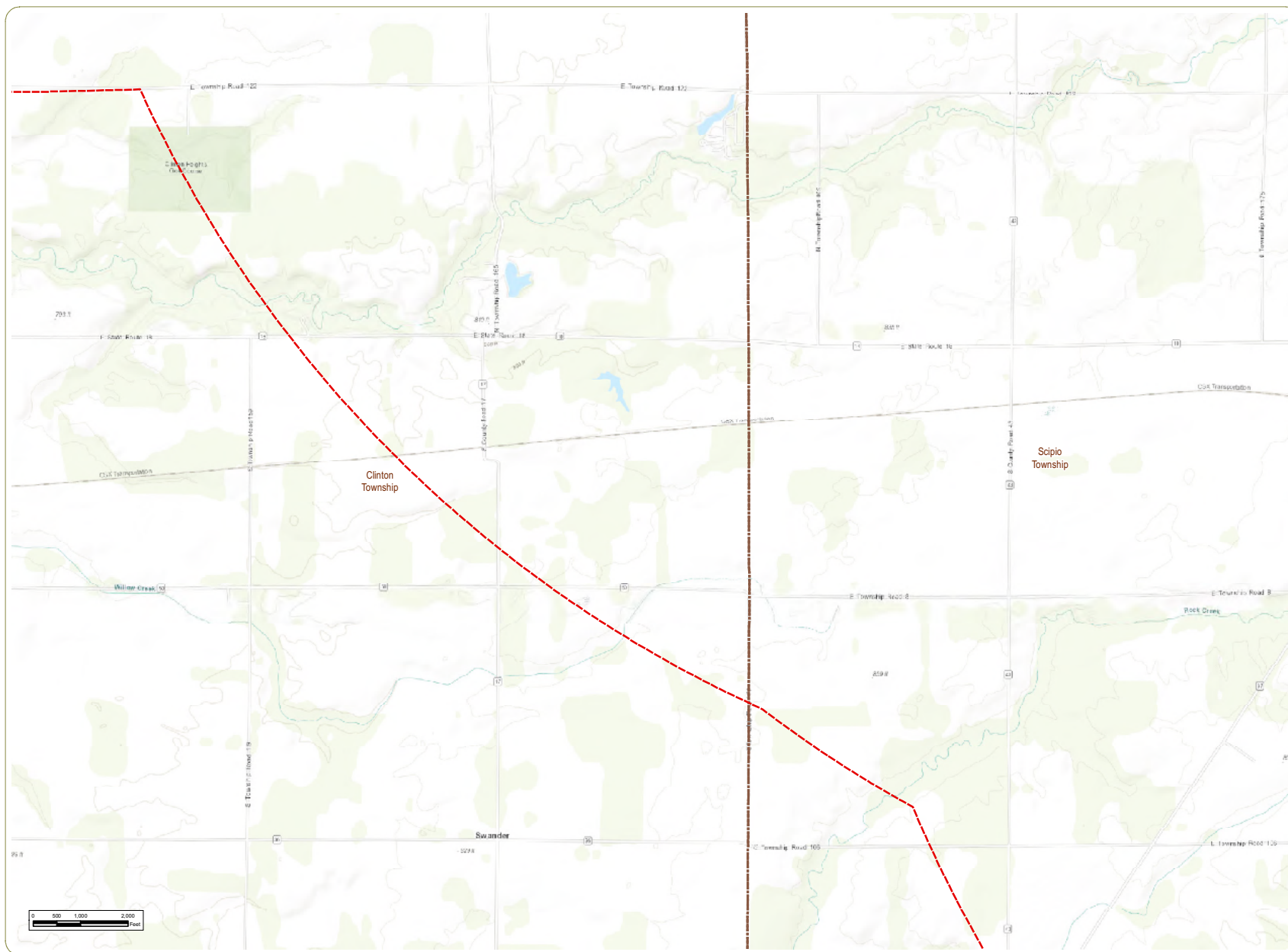
- 5 Mile Study Area
- Township Boundary
- County Boundary



Sheet 18 of 25

Notes: 1. Basemap: ESRI ArcGIS Online "World Topographic Map" map service.
2. This map was generated in ArcMap on December 13, 2018. 3. This is a color graphic. Reproduction in grayscale may misrepresent the data. 4. Project Boundary provided by Apex; aviation features obtained from Ohio State GIS server. 5. Map Scale 1:24,000.



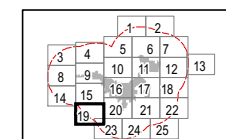


Republic Wind Farm

Adams, Pleasant, Reed, Scipio, and Thompson Townships, Seneca County, and York Township, Sandusky County, Ohio

Figure 07-1: Aviation Facilities

- 5 Mile Study Area
- Township Boundary
- County Boundary

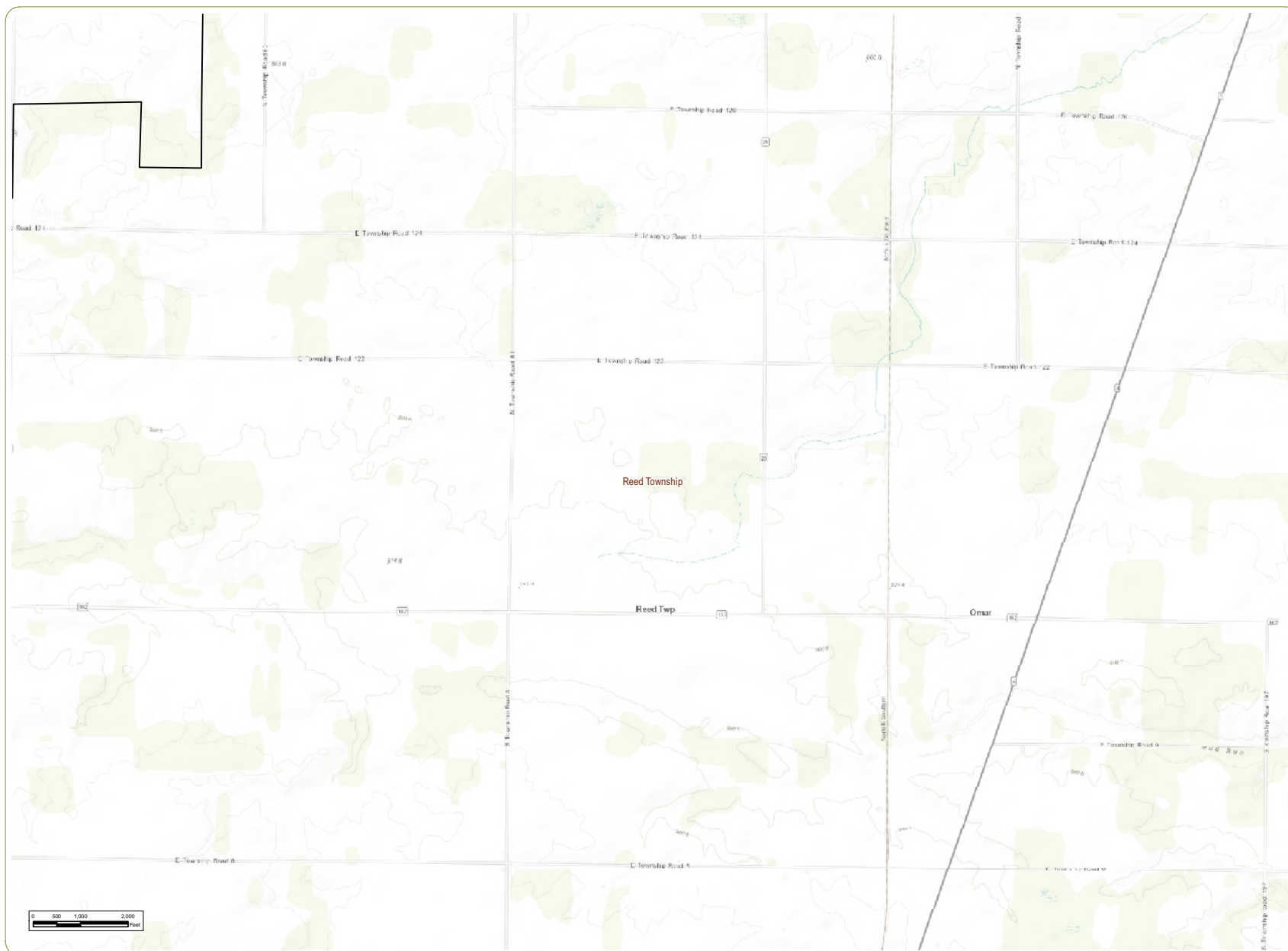


Sheet 19 of 25

Notes: 1. Basemap: ESRI ArcGIS Online "World Topographic Map" map service.
2. This map was generated in ArcMap on December 13, 2018. 3. This is a color graphic. Reproduction in grayscale may misrepresent the data. 4. Project Boundary provided by Apex; aviation features obtained from Ohio State GIS server. 5. Map Scale 1:24,000.



www.edrdpc.com

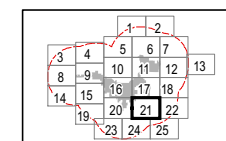


Republic Wind Farm

Adams, Pleasant, Reed, Scipio, and Thompson Townships, Seneca County, and York Township, Sandusky County, Ohio

Figure 07-1: Aviation Facilities

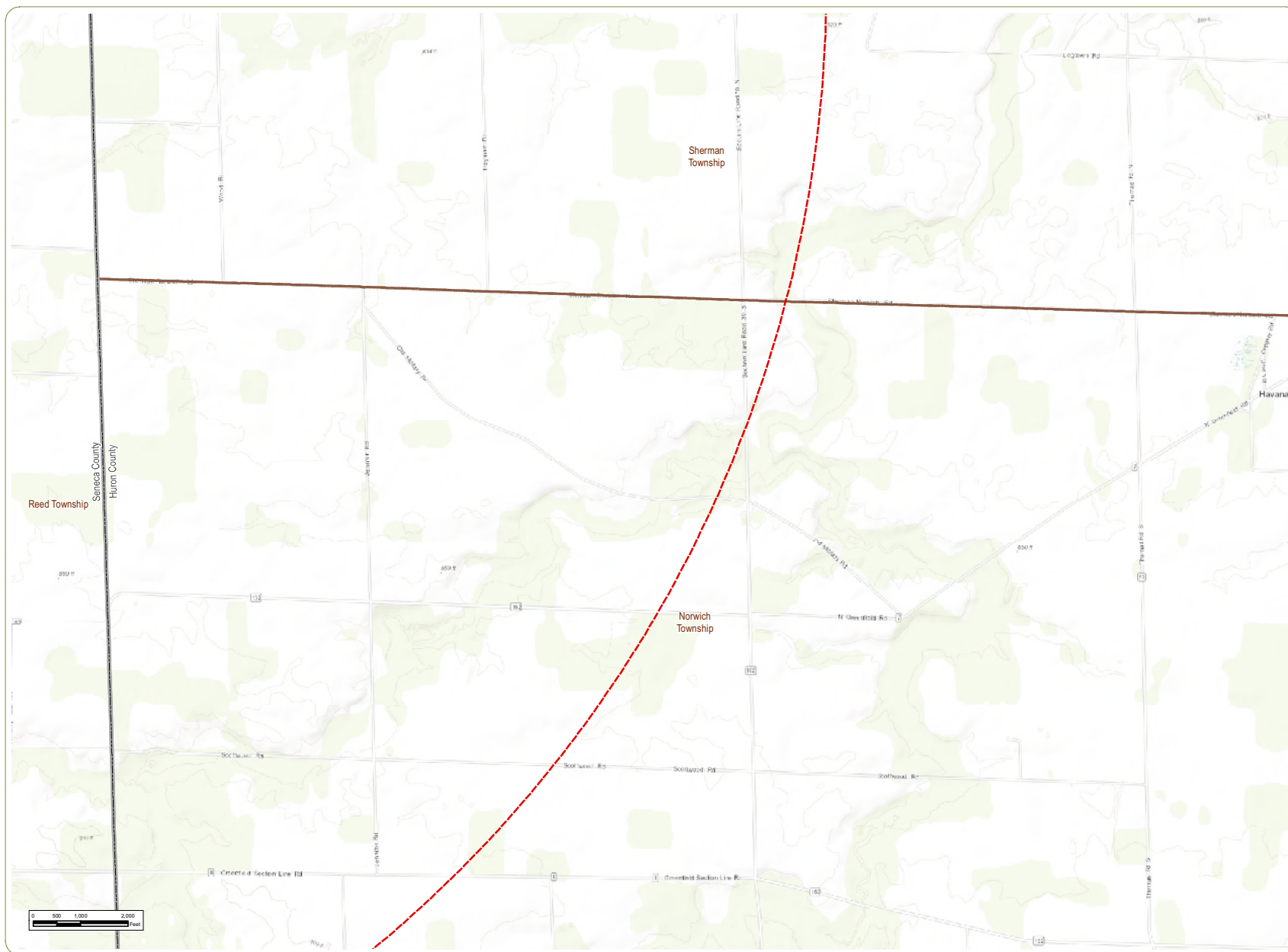
- Project Boundary
- 5 Mile Study Area
- Township Boundary
- County Boundary



Notes: 1. Basemap: ESRI ArcGIS Online "World Topographic Map" map service.
2. This map was generated in ArcMap on December 13, 2018. 3. This is a color graphic. Reproduction in grayscale may misrepresent the data. 4. Project Boundary provided by Apex; aviation features obtained from Ohio State GIS server. 5. Map Scale 1:24,000.



www.edrdpc.com

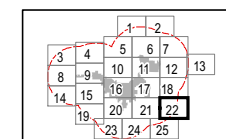


Republic Wind Farm

Adams, Pleasant, Reed, Scipio, and Thompson Townships, Seneca County, and York Township, Sandusky County, Ohio

Figure 07-1: Aviation Facilities

- 5 Mile Study Area
- Township Boundary
- County Boundary

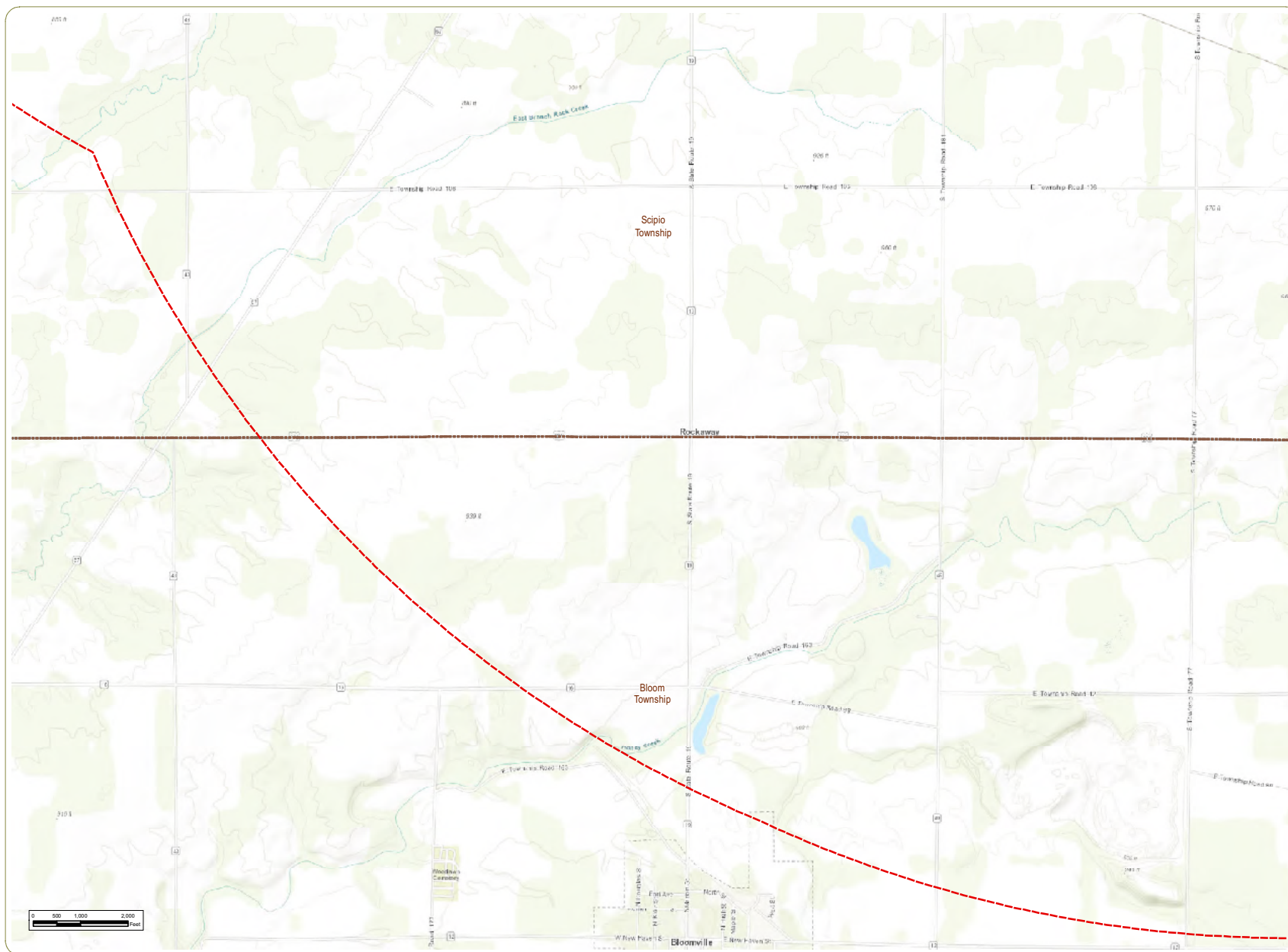


Sheet 22 of 25

Notes: 1. Basemap: ESRI ArcGIS Online "World Topographic Map" map service. 2. This map was generated in ArcMap on December 13, 2018. 3. This is a color graphic. Reproduction in grayscale may misrepresent the data. 4. Project Boundary provided by Apex; aviation features obtained from Ohio State GIS server. 5. Map Scale 1: 24,000.



www.edrdpc.com

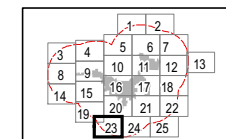


Republic Wind Farm

Adams, Pleasant, Reed, Scipio, and Thompson Townships, Seneca County, and York Township, Sandusky County, Ohio

Figure 07-1: Aviation Facilities

- 5 Mile Study Area
- Township Boundary
- County Boundary

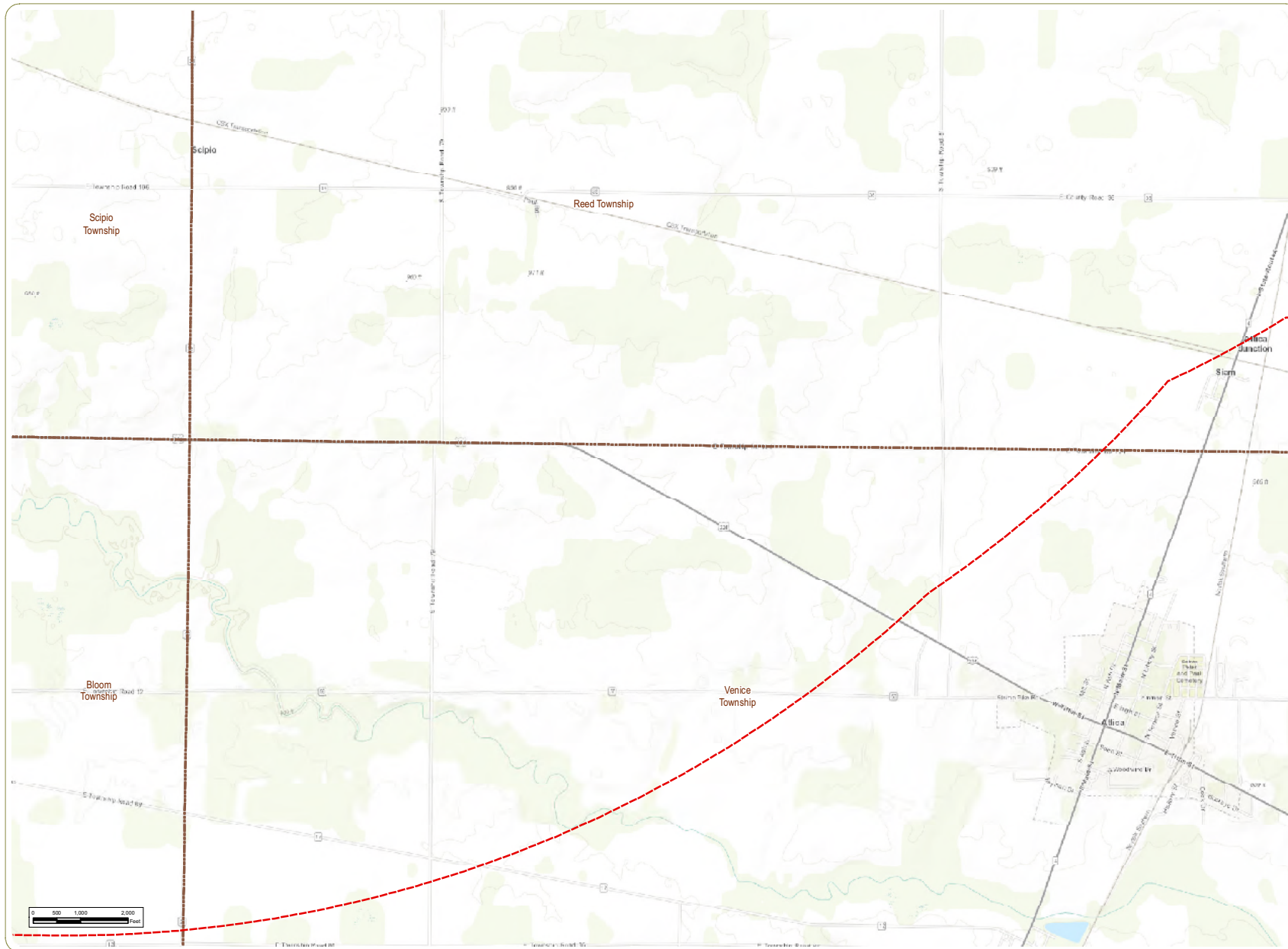


Sheet 23 of 25

Notes: 1. Basemap: ESRI ArcGIS Online "World Topographic Map" map service.
2. This map was generated in ArcMap on December 13, 2018. 3. This is a color graphic. Reproduction in grayscale may misrepresent the data. 4. Project Boundary provided by Apex; aviation features obtained from Ohio State GIS server. 5. Map Scale 1: 24,000.



www.edrdpc.com

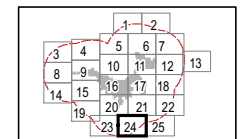


Republic Wind Farm

Adams, Pleasant, Reed, Scipio, and Thompson Townships, Seneca County, and York Township, Sandusky County, Ohio

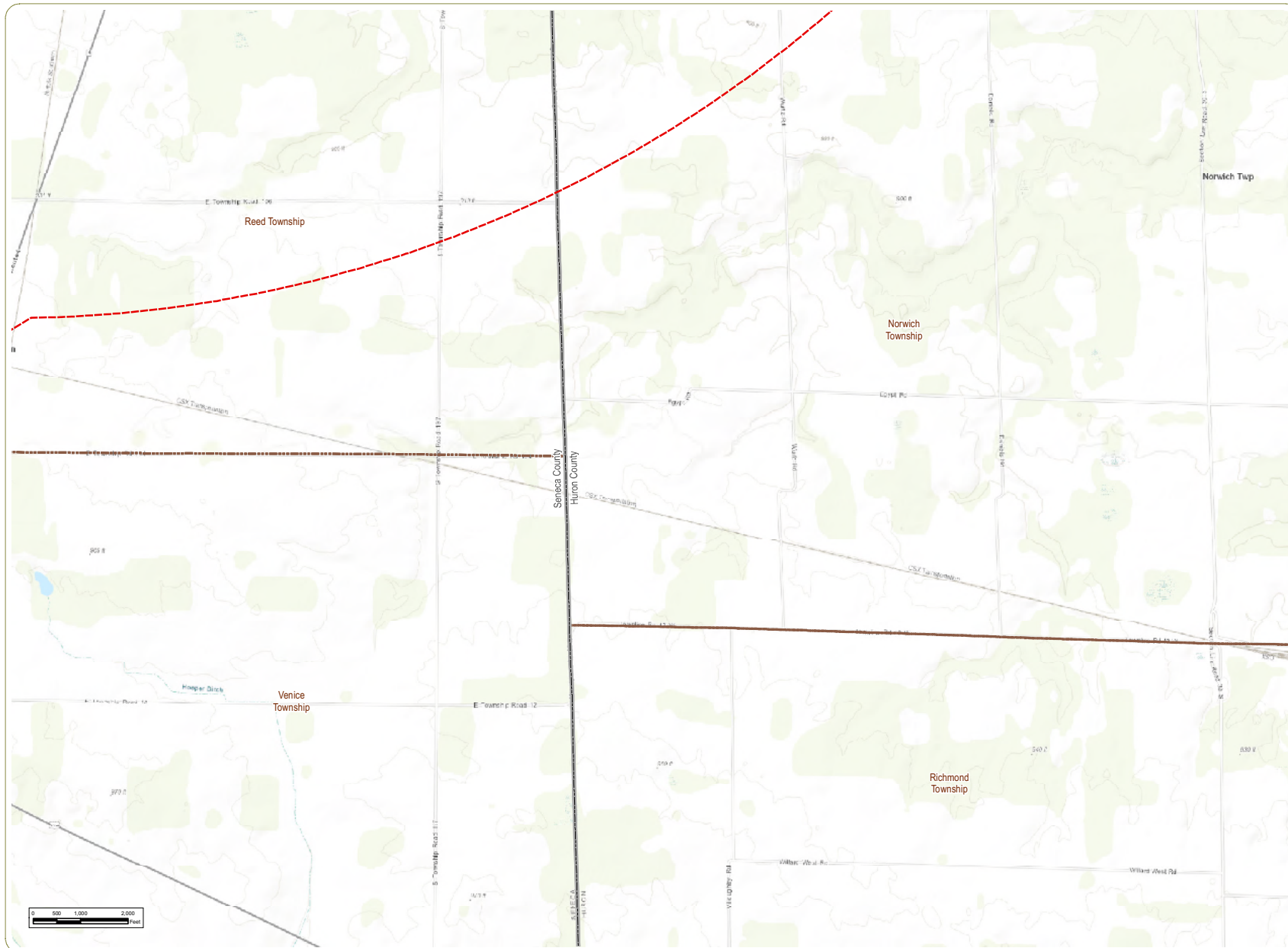
Figure 07-1: Aviation Facilities

- 5 Mile Study Area
- Township Boundary
- County Boundary



Notes: 1. Basemap: ESRI ArcGIS Online "World Topographic Map" map service.
2. This map was generated in ArcMap on December 13, 2018. 3. This is a color graphic. Reproduction in grayscale may misrepresent the data. 4. Project Boundary provided by Apex; aviation features obtained from Ohio State GIS server. 5. Map Scale 1:24,000.



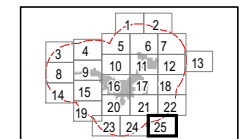


Republic Wind Farm

Adams, Pleasant, Reed, Scipio, and Thompson Townships, Seneca County, and York Township, Sandusky County, Ohio

Figure 07-1: Aviation Facilities

- 5 Mile Study Area
- Township Boundary
- County Boundary



Sheet 25 of 25

Notes: 1. Basemap: ESRI ArcGIS Online "World Topographic Map" map service. 2. This map was generated in ArcMap on December 13, 2018. 3. This is a color graphic. Reproduction in grayscale may misrepresent the data. 4. Project Boundary provided by Apex; aviation features obtained from Ohio State GIS server. 5. Map Scale 1:24,000.



www.edrdpc.com

This foregoing document was electronically filed with the Public Utilities

Commission of Ohio Docketing Information System on

12/26/2018 11:45:54 AM

in

Case No(s). 17-2295-EL-BGN

Summary: Application Figures 07-1 electronically filed by Teresa Orahod on behalf of Dylan F. Borchers