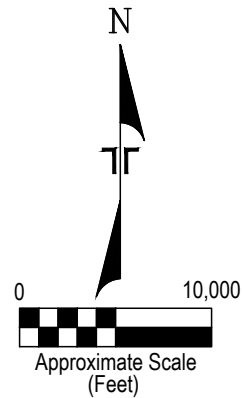
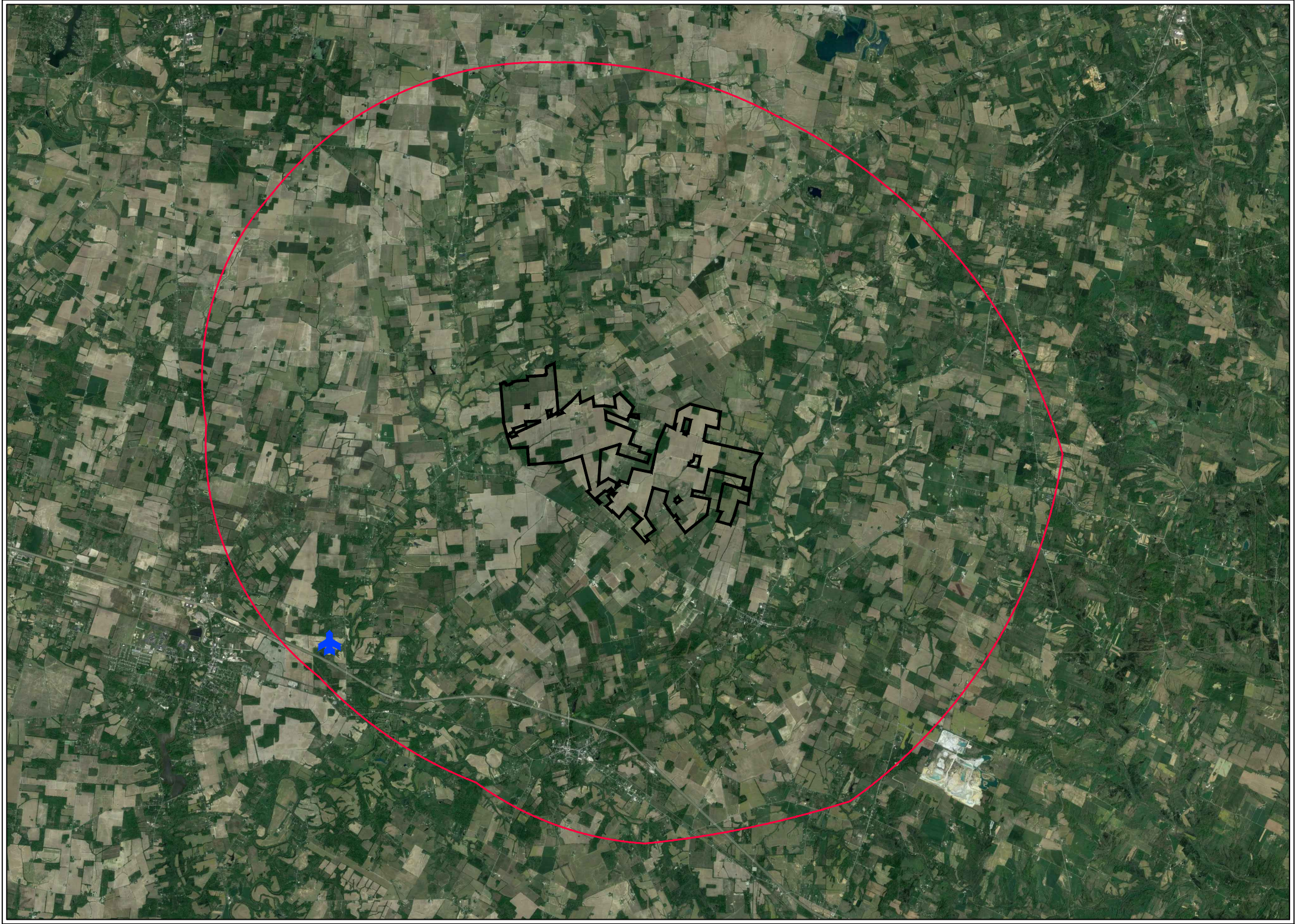


Figure 6

Aviation Map



LEGEND

— PROJECT BOUNDARY

— FIVE MILE RADIUS

★ NEALS AIRPORT

THIS DIAGRAM IS FOR GENERAL LOCATION ONLY, AND IS NOT INTENDED FOR CONSTRUCTION PURPOSES

Project Mngr:	EK	Project No.	49187638	<div><div>Terracon</div><div>Consulting Engineers and Scientists</div><div>2105 Newpoint Place, Ste. 600 Lawrenceville, GA 30043 (770) 623-0755 (770) 623-9628</div></div>		<div>AVIATION MAP</div> <div>ECOLOGICAL RESOURCES ANALYSIS REPORT</div> <div>PROPOSED HIGHLAND SOLAR FARM</div> <div>STATE ROUTE 138 & HIGHLAND COUNTY ROAD 5</div> <div>BUFORD, HIGHLAND COUNTY, OH</div>		EXHIBIT	
Drawn By:	JSL	Scale:	AS SHOWN						
Checked By:	MRF/EK	File No.	49187638-AVIATION MAP						
Approved By:	EK	Date:	SEPT. 2018						
								1	

This foregoing document was electronically filed with the Public Utilities

Commission of Ohio Docketing Information System on

10/9/2018 6:29:17 PM

in

Case No(s). 18-1334-EL-BGN

Summary: Application Figures (Part 4) electronically filed by Ms. Karen A. Winters on behalf of Hecate Energy Highland LLC