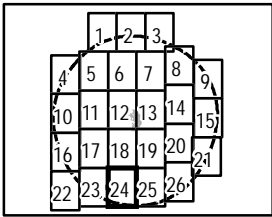


Willowbrook Solar Farm
Concord and White Oak Townships, Highland County,
and Eagle Township, Brown County, Ohio

Figure 18: Map of Cultural Resources- Sheet 24 of 26

Notes: 1. Basemap: ESRI ArcGIS Online "World Topographic Map" map service. 2. This map was generated in ArcMap on September 6, 2018. 3. Project components provided by ORR; Other shapefiles obtained from publicly sources. 4. This is a color graphic. Reproduction in grayscale may misrepresent the data. 5. Map Scale 1:24,000.

- †† OGS Cemeteries
- Historic Structure
- 10-Mile Study Area
- - - Township Boundary
- ▭ County Boundary





Willowbrook Solar Farm

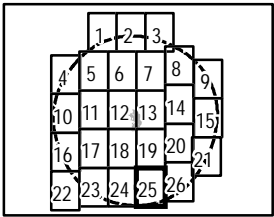
Concord and White Oak Townships, Highland County,
and Eagle Township, Brown County, Ohio

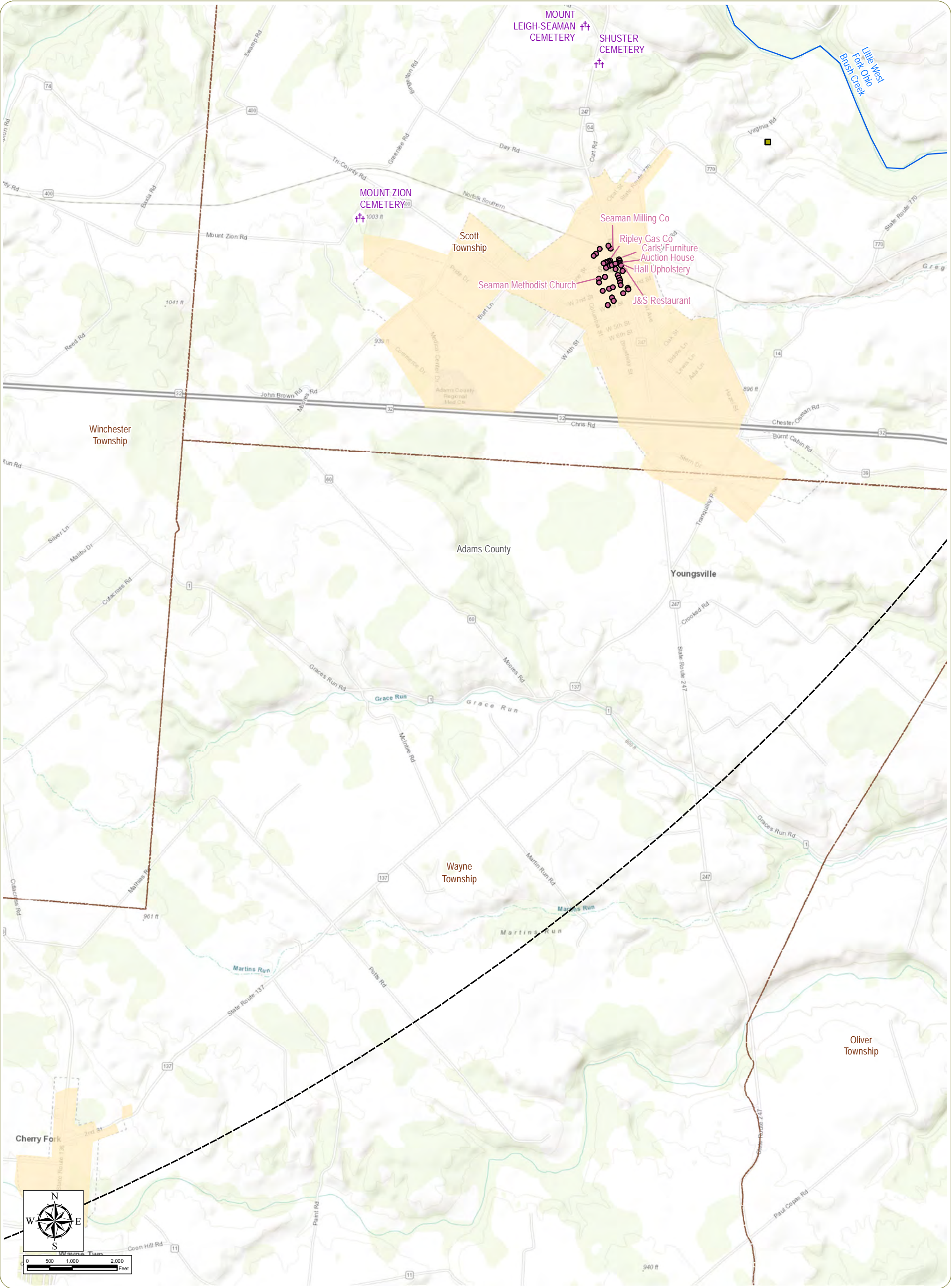
Figure 18: Map of Cultural Resources- Sheet 25 of 26

Notes: 1. Basemap: ESRI ArcGIS Online "World Topographic Map" map service. 2. This map was generated in ArcMap on September 6, 2018. 3. Project components provided by ORR; Other shapefiles obtained from publicly sources. 4. This is a color graphic. Reproduction in grayscale may misrepresent the data. 5. Map Scale 1:24,000.

- †† OGS Cemeteries
- Historic Structure
- NR Listings
- NR Determinations of Eligibility
- ★ NRHP-Listed Resource
- River/Stream
- Population Center

- 10-Mile Study Area
- Township Boundary
- County Boundary



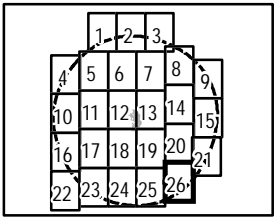


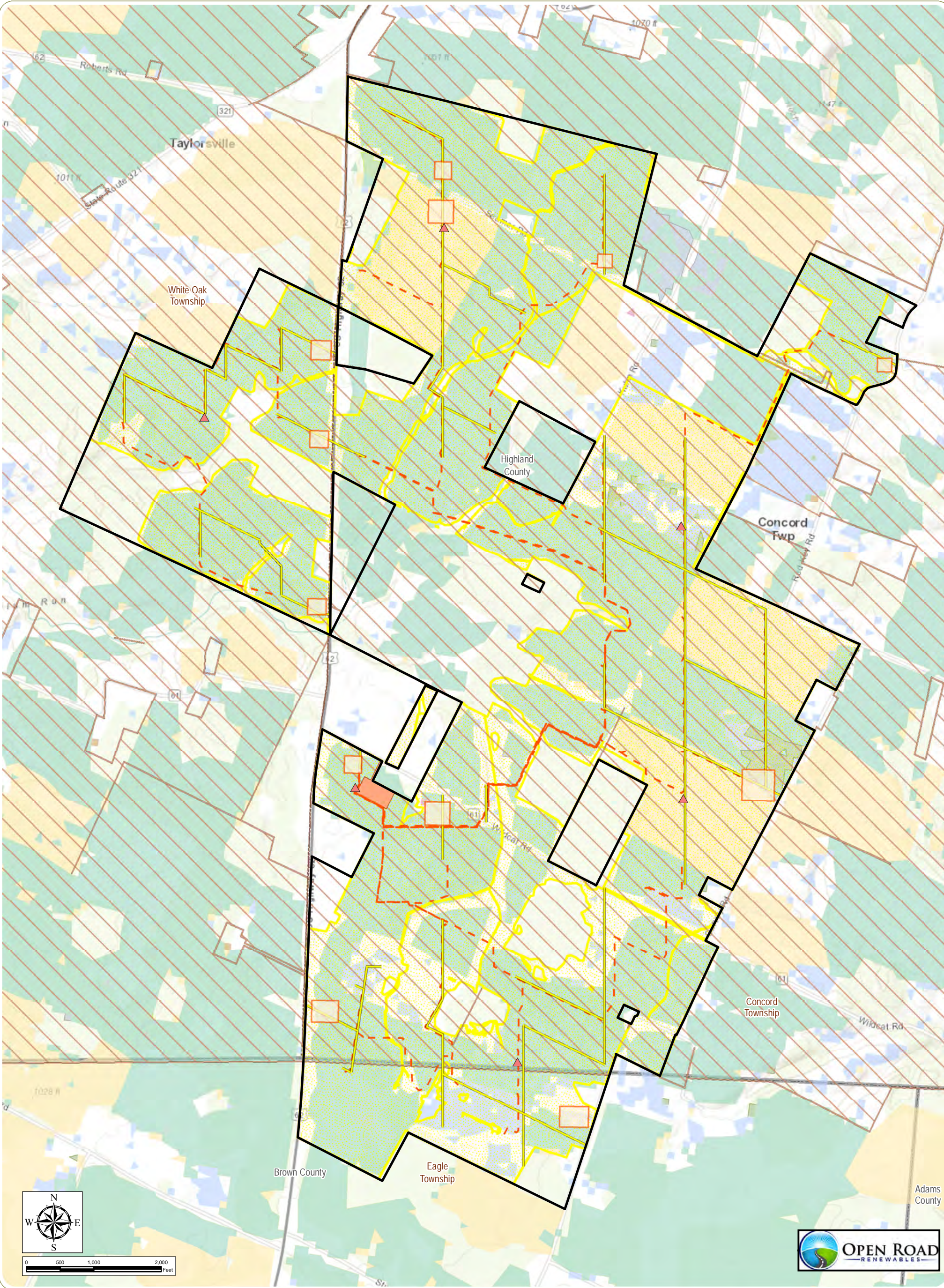
Willowbrook Solar Farm
Concord and White Oak Townships, Highland County,
and Eagle Township, Brown County, Ohio

Figure 18: Map of Cultural Resources- Sheet 26 of 26

Notes: 1. Basemap: ESRI ArcGIS Online "World Topographic Map" map service. 2. This map was generated in ArcMap on September 6, 2018. 3. Project components provided by ORR; Other shapefiles obtained from publicly sources. 4. This is a color graphic. Reproduction in grayscale may misrepresent the data. 5. Map Scale 1:24,000.

- Archaeological Sites
- OGS Cemeteries
- Historic Structure
- River/Stream
- Population Center
- 10-Mile Study Area
- Township Boundary
- County Boundary





Willowbrook Solar Farm

Concord and White Oak Townships, Highland County,
and Eagle Township, Brown County, Ohio

Figure 19: Map of Agricultural Resources

Notes: 1. Basemap: ESRI ArcGIS Online "World Topographic Map" map service. 2. This map was generated in ArcMap on September 10, 2018. 3. Project components provided by ORR; agricultural district data obtained from Brown and Highland County. 4. This is a color graphic. Reproduction in grayscale may misrepresent the data. 5. Map Scale 1:16,000

- | | | |
|-------------------------|-----------------------|-----------------------|
| ▲ Pyranometer | CAUV Program | Winter Wheat/Soybeans |
| — Access Road | Township Boundary | Fallow/Idle Cropland |
| - - - Collection Line | County Boundary | Oats |
| □ Laydown Yard | Agricultural Land Use | Other Hay/Non Alfalfa |
| ▨ Potential Solar Array | Alfalfa | Soybeans |
| ■ Substation | Corn | Winter Wheat |
| ▭ Project Area | | |



Figure 20. Agricultural Land Impacts

Agricultural Land Use	Total Disturbance (acres)	Temporary Disturbance (acres)	Permanent Loss (acres)
Cultivated Lands/Croplands¹	1,287.1	55.4	1,231.6
<i>Solar Fields²</i>	1,209	0.0	1,209
<i>AC Collector System</i>	36.1	36.1	0.0
<i>Project Substation³</i>	3.3	0.0	3.3
<i>Access Roads</i>	25.1	4.9	16.1
<i>Laydown Area⁴</i>	13.3	10.3	3.0
<i>Pyranometer</i>	>0.1	0.0	>0.1
<i>Inverter Pads⁴</i>	0.2	0.0	0.2
Grassland/Pasture¹	383.2	14.7	368.5
<i>Solar Fields²</i>	362.5	0.0	362.5
<i>AC Collector System</i>	8.5	8.5	0.0
<i>Project Substation</i>	0.0	0.0	0.0
<i>Access Roads</i>	7.7	2.8	4.9
<i>Laydown Area⁴</i>	4.4	3.4	1.0
<i>Pyranometer</i>	0.0	0.0	0.0
<i>Inverter Pads⁴</i>	0.1	0.0	0.1
Total	1,670.2	70.1	1,600.1
CAUV Program			
<i>Solar Fields²</i>	1,592.5	0.0	1,592.5
<i>AC Collector System</i>	48.4	48.4	0.0
<i>Project Substation³</i>	3.3	0.0	3.3
<i>Access Roads</i>	30.9	11.1	19.8
<i>Laydown Area⁴</i>	20.5	15.8	4.7
<i>Pyranometer</i>	>0.1	0.0	>0.1
<i>Inverter Pads⁴</i>	0.3	0.0	0.3
Total	1,678.4	75.4	1,620.6

¹ Agricultural land use based on National Land Cover Database (NLCD), 2011.

² The Potential Solar Field encompasses approximately 1,726 acres. However, the panel arrays will be spread across 1,087 acres and the approximately 68,000 solar pilings will permanently impact 1.56 acres of ground, of which 0.95 acre is in cultivated lands/croplands and 0.3 acre is in grassland/pasture, and 1.5 acres are enrolled in the CAUV Program/Agricultural Districts Program. The agricultural land will be lost during the duration of the Project. However, once the Project is decommissioned, the land can be reconstituted to its original use.

³ Impacts associated with the Gen-tie are included as a part of the substation. However, the Gen-tie will be the subject of a construction notice that is separate from this Application.

⁴ The exact location of inverter pads is not known and the locations of laydown areas include more area than will actually be constructed, so the proportion of agricultural land use/agricultural districts within the project area was used to estimate the percentage of impacts to land use/district from the laydown yards and inverter pads.

This foregoing document was electronically filed with the Public Utilities

Commission of Ohio Docketing Information System on

9/17/2018 3:41:53 PM

in

Case No(s). 18-1024-EL-BGN

Summary: Application Figures, Part 3 of 3 electronically filed by Mr. MacDonald W Taylor on behalf of Willowbrook Solar I, LLC