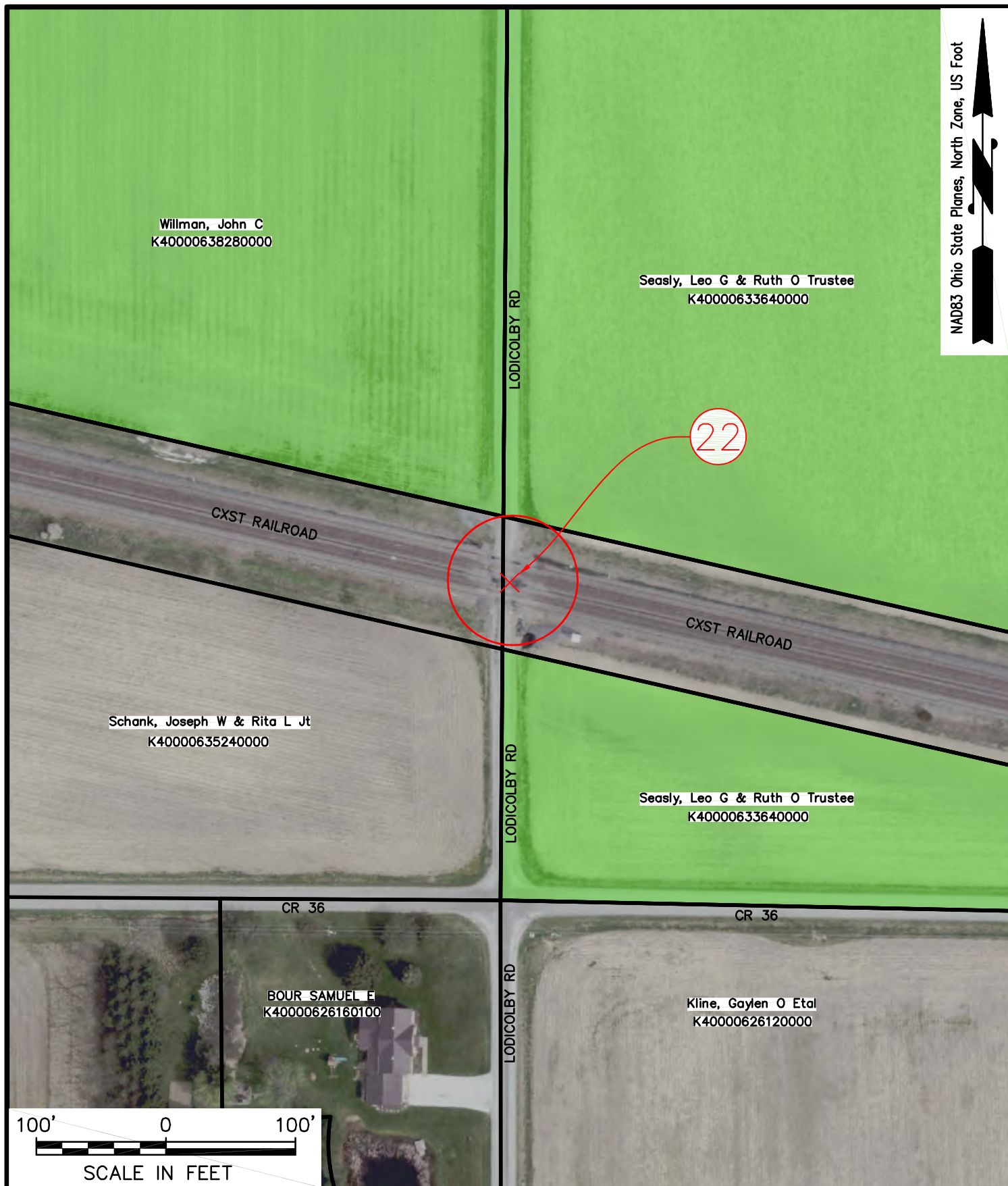


bba
Surveyors | Engineers | Planners
Bennett Brewer & Associates, LLC
23 East Main Street, Suite 200
Frostburg, MD 21532
Phone 301-687-0494

CLIENT:
S-POWER
SUSTAINABLE POWER GROUP
SENECA WIND, LLC
2180 SOUTH 1300 EAST, SUITE 600
SALT LAKE CITY, UT 84106

PROJECT: SENECA WIND	
PROJECT NO.: 2018031	DATE: 07/18/18
FIGURE 3 TURNING MOVEMENTS EXHIBIT	
SHEET: T21	



bba

Surveyors | Engineers | Planners

Bennett Brewer & Associates, LLC
23 East Main Street, Suite 200
Frostburg, MD 21532
Phone 301-687-0494

CLIENT:

S-POWER
SUSTAINABLE POWER GROUP

SENECA WIND, LLC
2180 SOUTH 1300 EAST, SUITE 600
SALT LAKE CITY, UT 84106

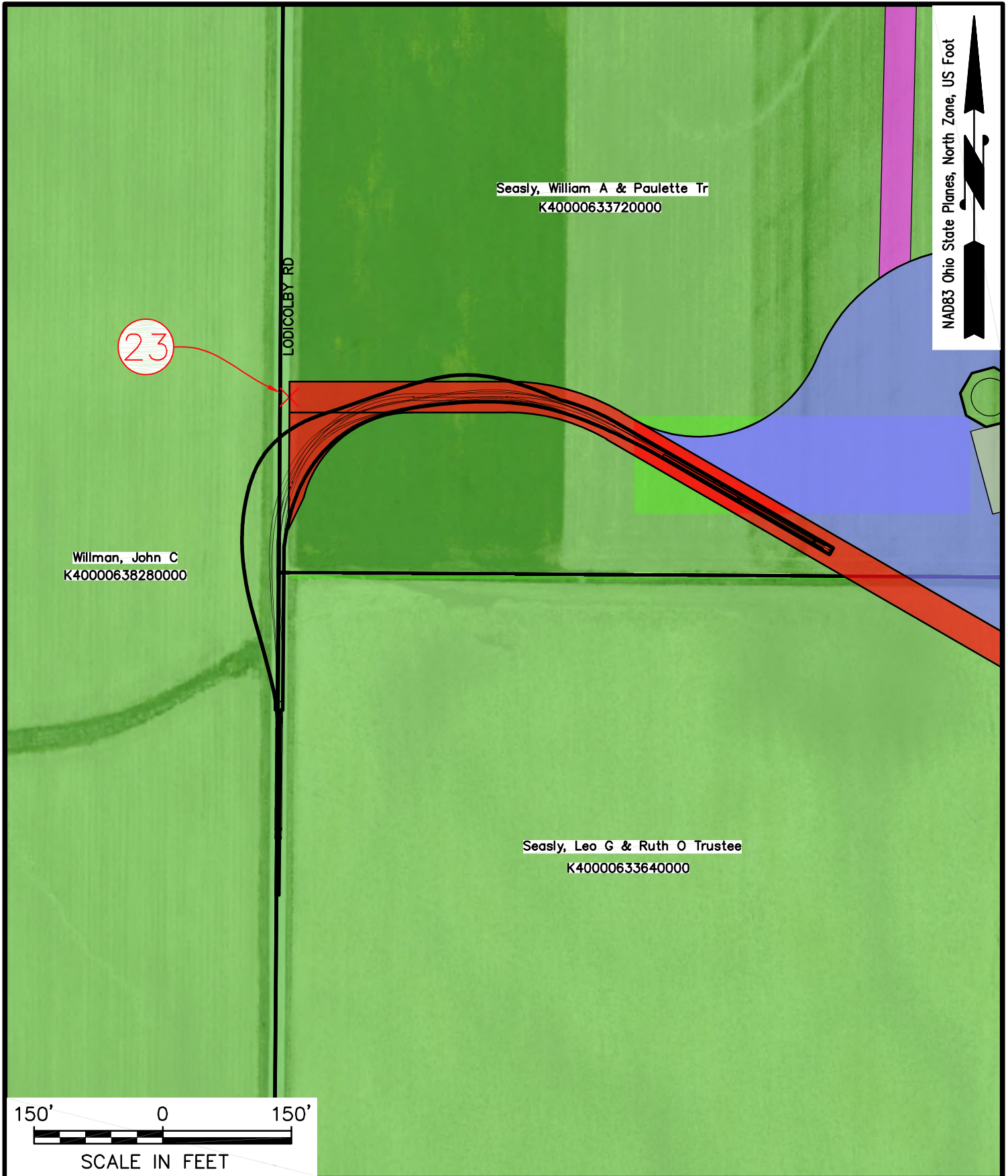
PROJECT: SENECA WIND



PROJECT NO.: 2018031

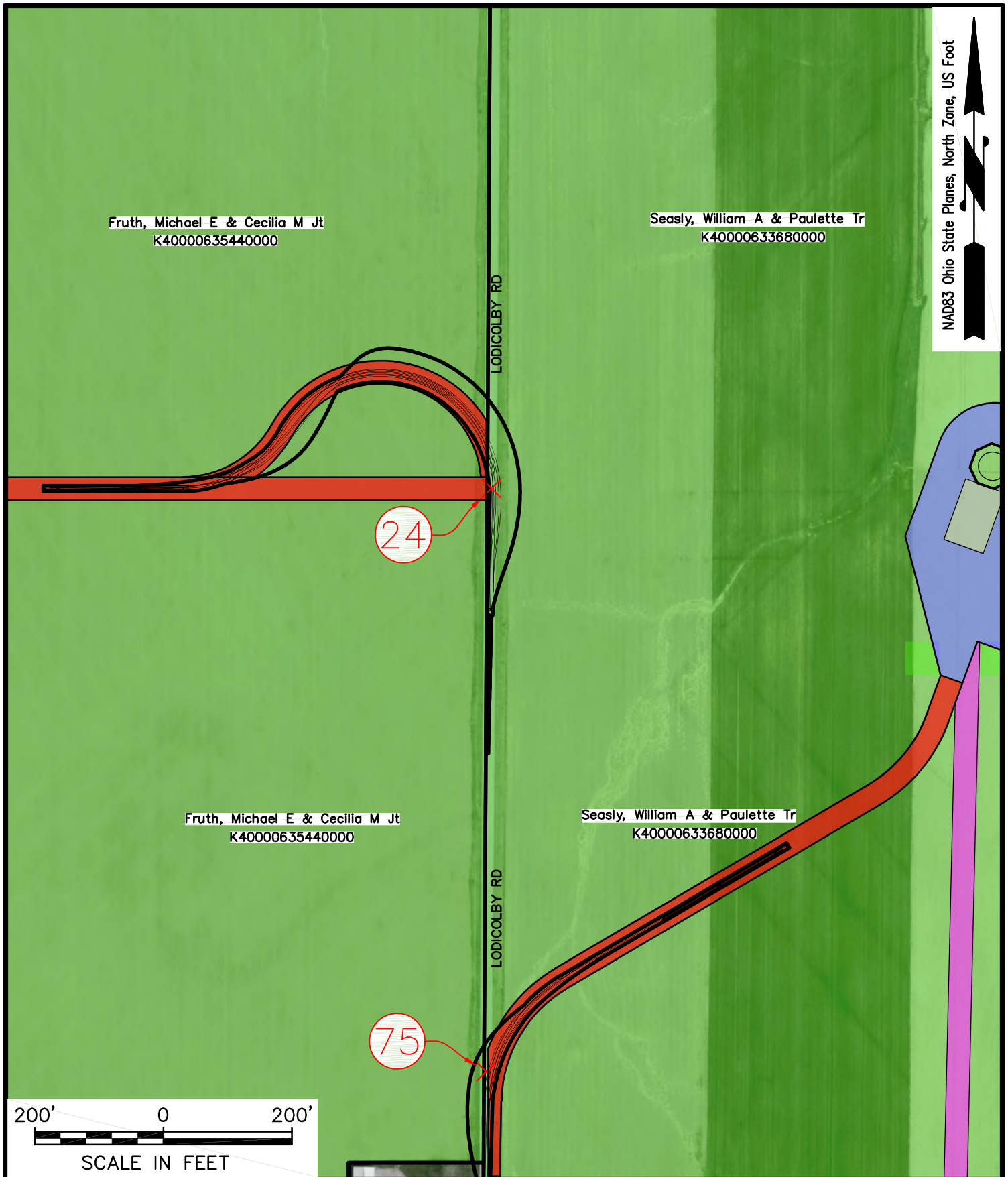
DATE: 07/18/18

FIGURE 3
TURNING MOVEMENTS EXHIBIT

SHEET: T22



 Surveyors Engineers Planners Bennett Brewer & Associates, LLC 23 East Main Street, Suite 200 Frostburg, MD 21532 Phone 301-687-0494	CLIENT:  S-POWER SUSTAINABLE POWER GROUP SENECA WIND, LLC 2180 SOUTH 1300 EAST, SUITE 600 SALT LAKE CITY, UT 84106	PROJECT: SENECA WIND	
		PROJECT NO.: 2018031	DATE: 07/18/18
		FIGURE 3 TURNING MOVEMENTS EXHIBIT	SHEET: T23



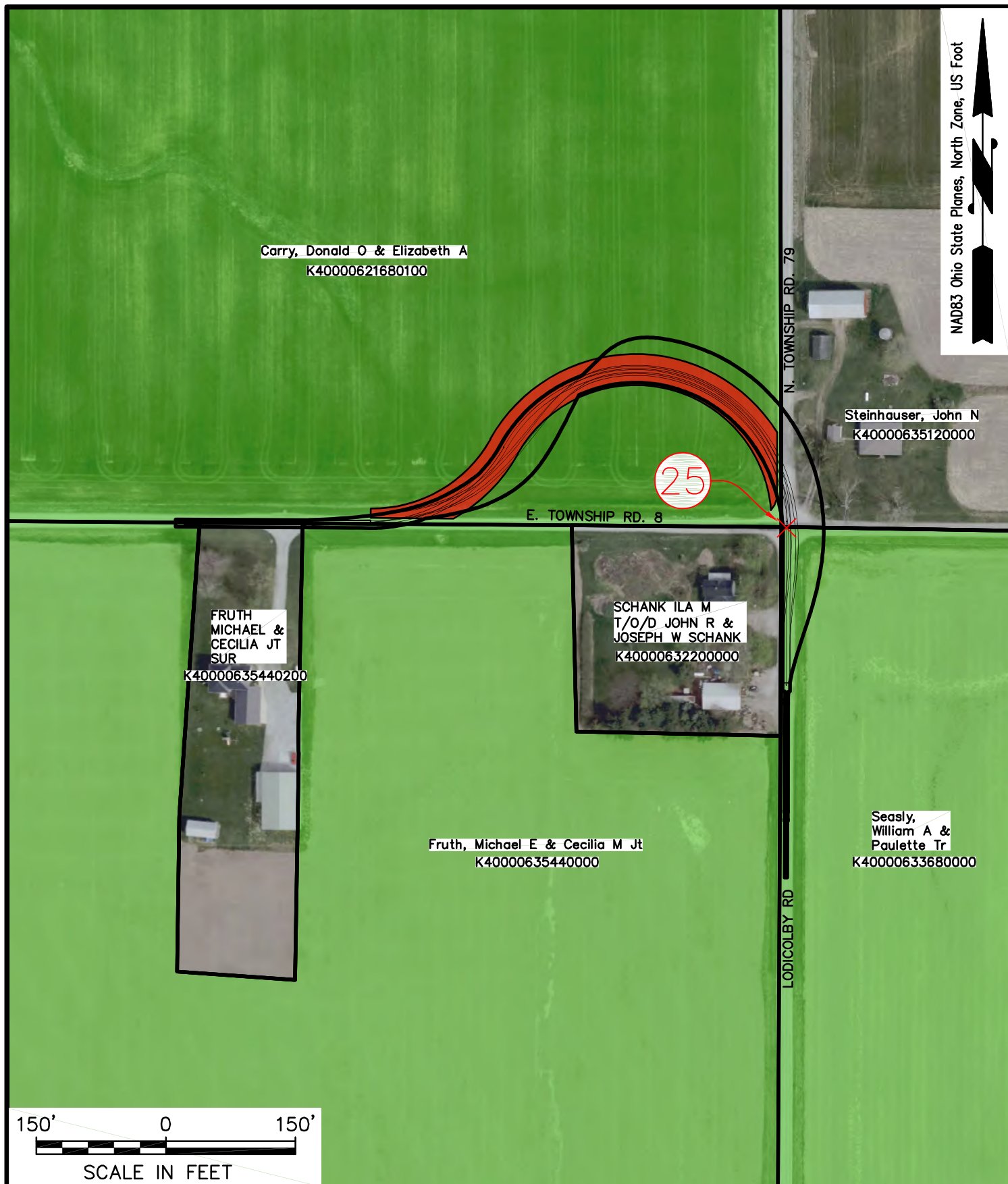
NAD83 Ohio State Planes, North Zone, US Foot

200' 0 200'
SCALE IN FEET

bba
Surveyors | Engineers | Planners
Bennett Brewer & Associates, LLC
23 East Main Street, Suite 200
Frostburg, MD 21532
Phone 301-687-0494

CLIENT:
S-POWER
SUSTAINABLE POWER GROUP
SENECA WIND, LLC
2180 SOUTH 1300 EAST, SUITE 600
SALT LAKE CITY, UT 84106

PROJECT: SENECA WIND	
PROJECT NO.: 2018031	DATE: 07/18/18
FIGURE 3 TURNING MOVEMENTS EXHIBIT	
SHEET: T24	



bba

Surveyors | Engineers | Planners

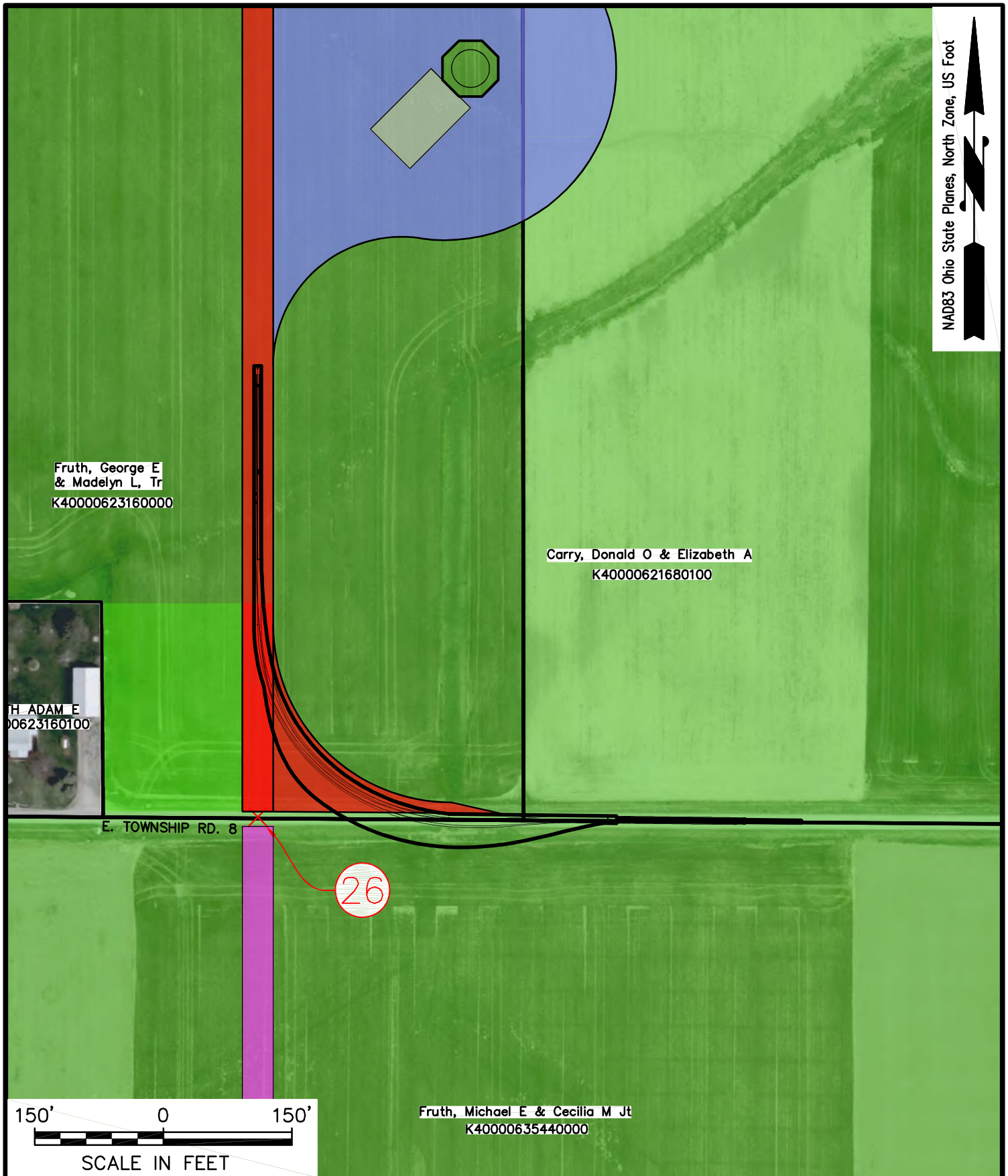
Bennett Brewer & Associates, LLC
23 East Main Street, Suite 200
Frostburg, MD 21532
Phone 301-687-0494

CLIENT:

S-POWER
SUSTAINABLE POWER GROUP

SENECA WIND, LLC
2180 SOUTH 1300 EAST, SUITE 600
SALT LAKE CITY, UT 84106

PROJECT: SENECA WIND	
PROJECT NO.: 2018031	DATE: 07/18/18
FIGURE 3 TURNING MOVEMENTS EXHIBIT	
SHEET: T25	



bba

Surveyors | Engineers | Planners

Bennett Brewer & Associates, LLC
23 East Main Street, Suite 200
Frostburg, MD 21532
Phone 301-687-0494

CLIENT:

S-POWER
SUSTAINABLE POWER GROUP

SENECA WIND, LLC
2180 SOUTH 1300 EAST, SUITE 600
SALT LAKE CITY, UT 84106

PROJECT: SENECA WIND

PROJECT NO.: 2018031

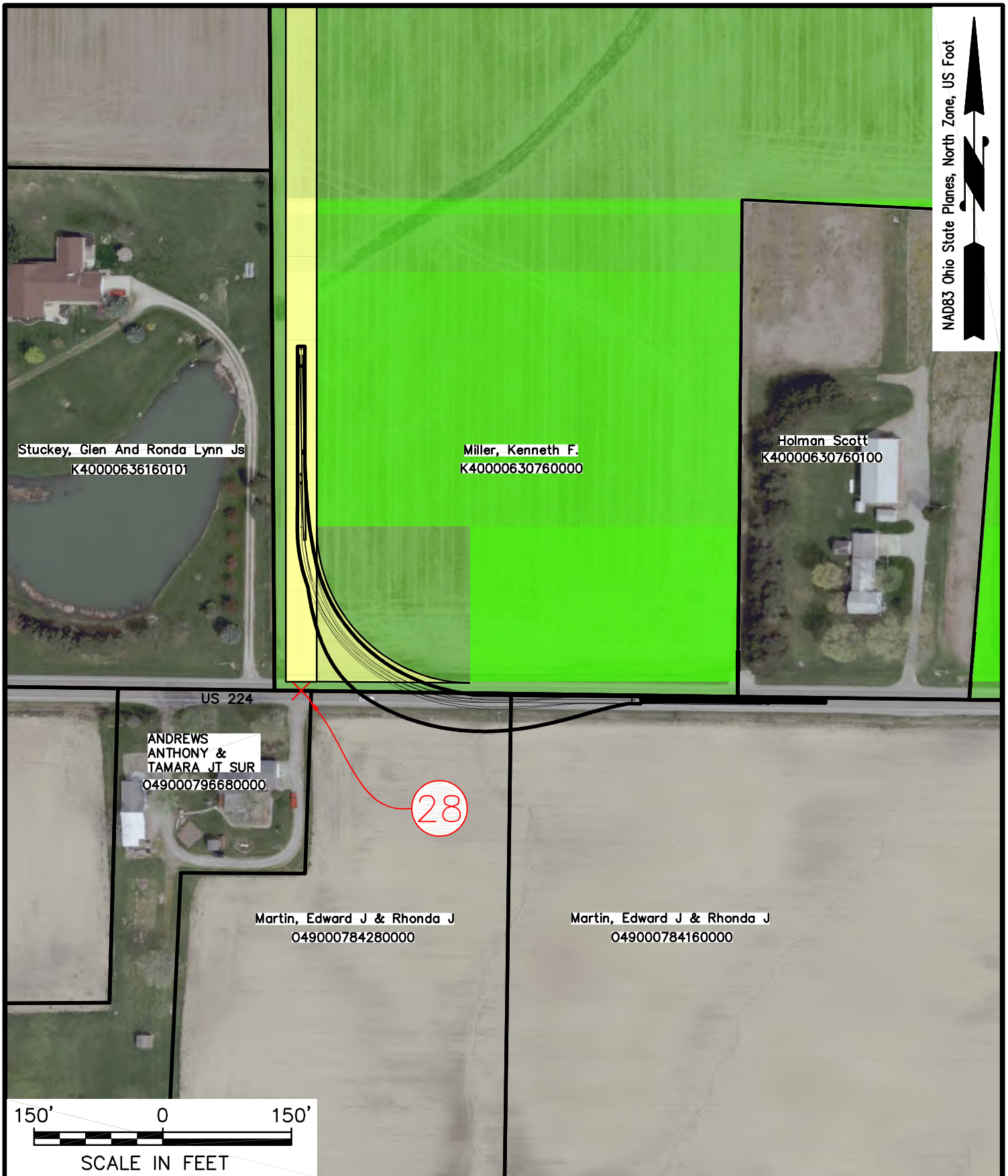
DATE: 07/18/18

FIGURE 3
TURNING MOVEMENTS EXHIBIT

SHEET: T26



<p>bba</p> <p>Surveyors Engineers Planners</p> <p>Bennett Brewer & Associates, LLC 23 East Main Street, Suite 200 Frostburg, MD 21532 Phone 301-687-0494</p>	<p>CLIENT:</p> <p>S-POWER SUSTAINABLE POWER GROUP</p> <p>SENECA WIND, LLC 2180 SOUTH 1300 EAST, SUITE 600 SALT LAKE CITY, UT 84106</p>	<p>PROJECT: SENECA WIND</p> <p>PROJECT NO.: 2018031</p> <p>FIGURE 3 TURNING MOVEMENTS EXHIBIT</p>	<p>DATE: 07/18/18</p> <p>SHEET: T27</p>
---	---	---	---



bba

Surveyors | Engineers | Planners

Bennett Brewer & Associates, LLC
23 East Main Street, Suite 200
Frostburg, MD 21532
Phone 301-687-0494

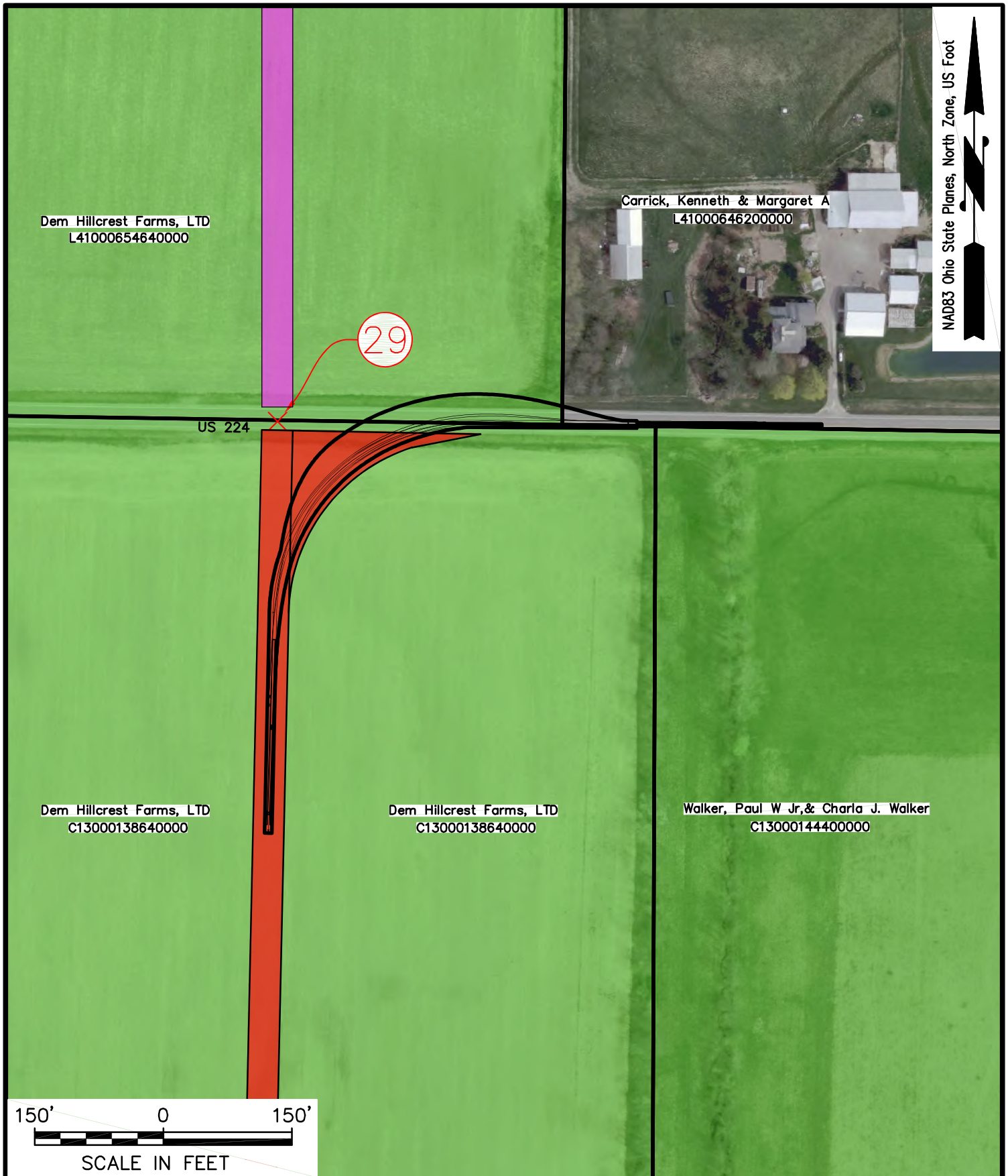
CLIENT:

S-POWER
SUSTAINABLE POWER GROUP

SENECA WIND, LLC
2180 SOUTH 1300 EAST, SUITE 600
SALT LAKE CITY, UT 84106

PROJECT: SENECA WIND

PROJECT NO.: 2018031	DATE: 07/18/18
FIGURE 3 TURNING MOVEMENTS EXHIBIT	SHEET: T28



bba

Surveyors | Engineers | Planners

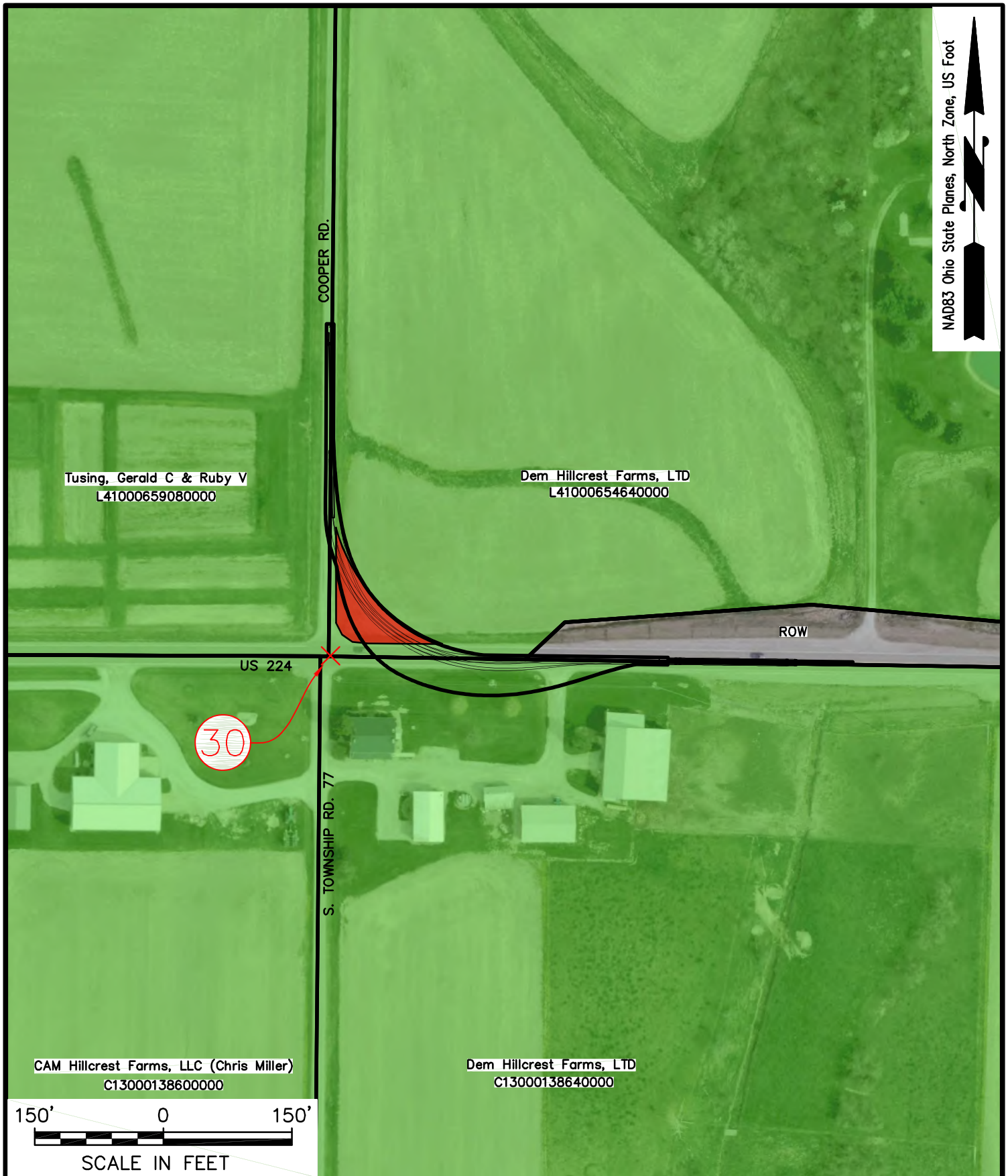
Bennett Brewer & Associates, LLC
23 East Main Street, Suite 200
Frostburg, MD 21532
Phone 301-687-0494

CLIENT:

S-POWER
SUSTAINABLE POWER GROUP

SENECA WIND, LLC
2180 SOUTH 1300 EAST, SUITE 600
SALT LAKE CITY, UT 84106

PROJECT: SENECA WIND	
PROJECT NO.: 2018031	DATE: 07/18/18
FIGURE 3 TURNING MOVEMENTS EXHIBIT	
SHEET: T29	



bba

Surveyors | Engineers | Planners

Bennett Brewer & Associates, LLC
23 East Main Street, Suite 200
Frostburg, MD 21532
Phone 301-687-0494

CLIENT:

S-POWER
SUSTAINABLE POWER GROUP

SENECA WIND, LLC
2180 SOUTH 1300 EAST, SUITE 600
SALT LAKE CITY, UT 84106

PROJECT: SENECA WIND	
PROJECT NO.: 2018031	DATE: 07/18/18
FIGURE 3 TURNING MOVEMENTS EXHIBIT	
SHEET: T30	

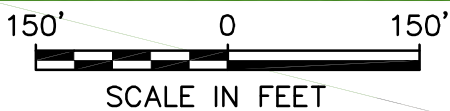
Depinet, Thomas M
L41000648200000

Dem Hillcrest Farms, LTD
L41000654600000

COOPER RD.

31

NAD83 Ohio State Planes, North Zone, US Foot



bba

Surveyors | Engineers | Planners

Bennett Brewer & Associates, LLC
23 East Main Street, Suite 200
Frostburg, MD 21532
Phone 301-687-0494

CLIENT:



S-POWER
SUSTAINABLE POWER GROUP

SENECA WIND, LLC
2180 SOUTH 1300 EAST, SUITE 600
SALT LAKE CITY, UT 84106

PROJECT:

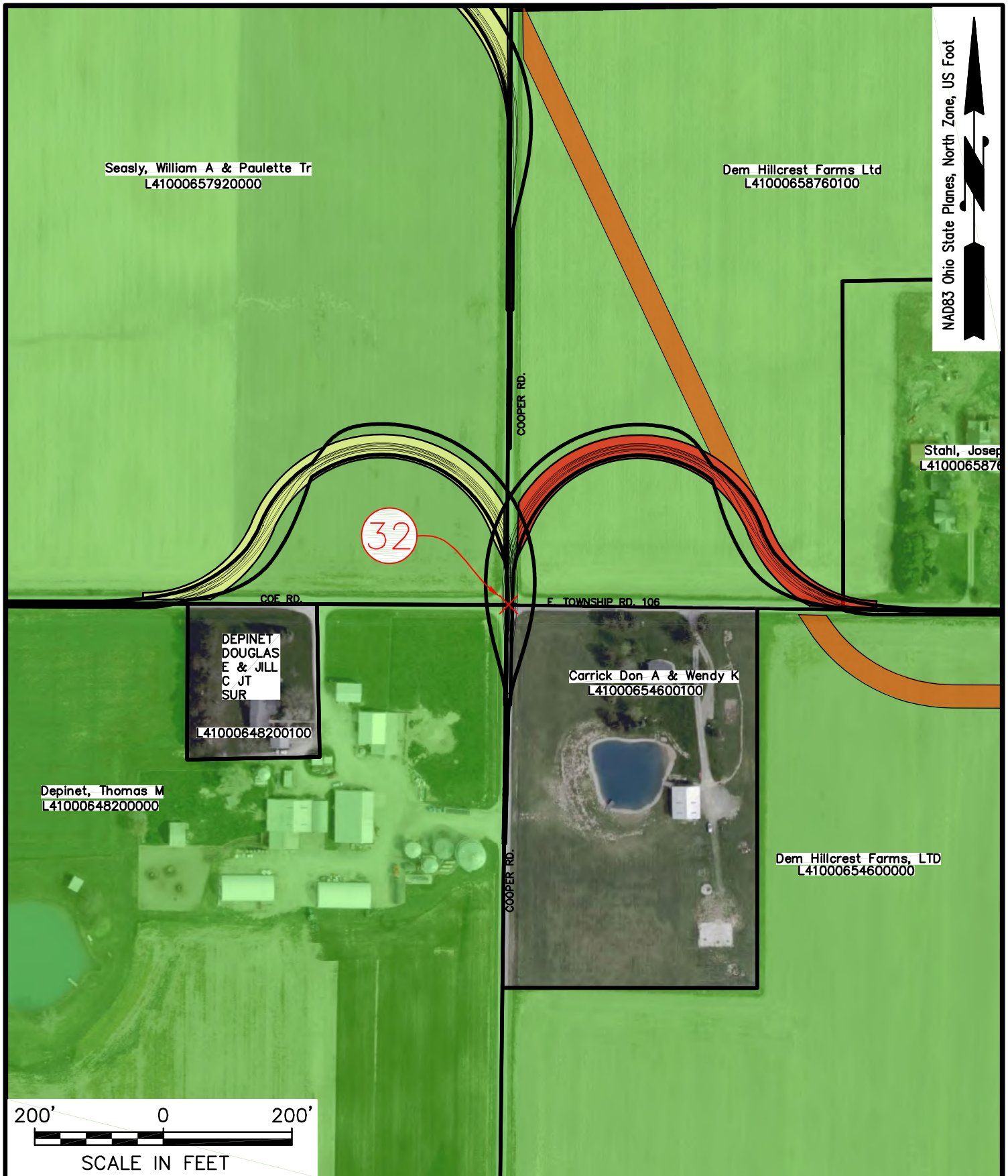
SENECA WIND

PROJECT NO.: 2018031

DATE: 07/18/18

FIGURE 3
TURNING MOVEMENTS EXHIBIT

SHEET:
T31



bba

Surveyors | Engineers | Planners

Bennett Brewer & Associates, LLC
23 East Main Street, Suite 200
Frostburg, MD 21532
Phone 301-687-0494

CLIENT:

S-POWER
SUSTAINABLE POWER GROUP

SENECA WIND, LLC
2180 SOUTH 1300 EAST, SUITE 600
SALT LAKE CITY, UT 84106

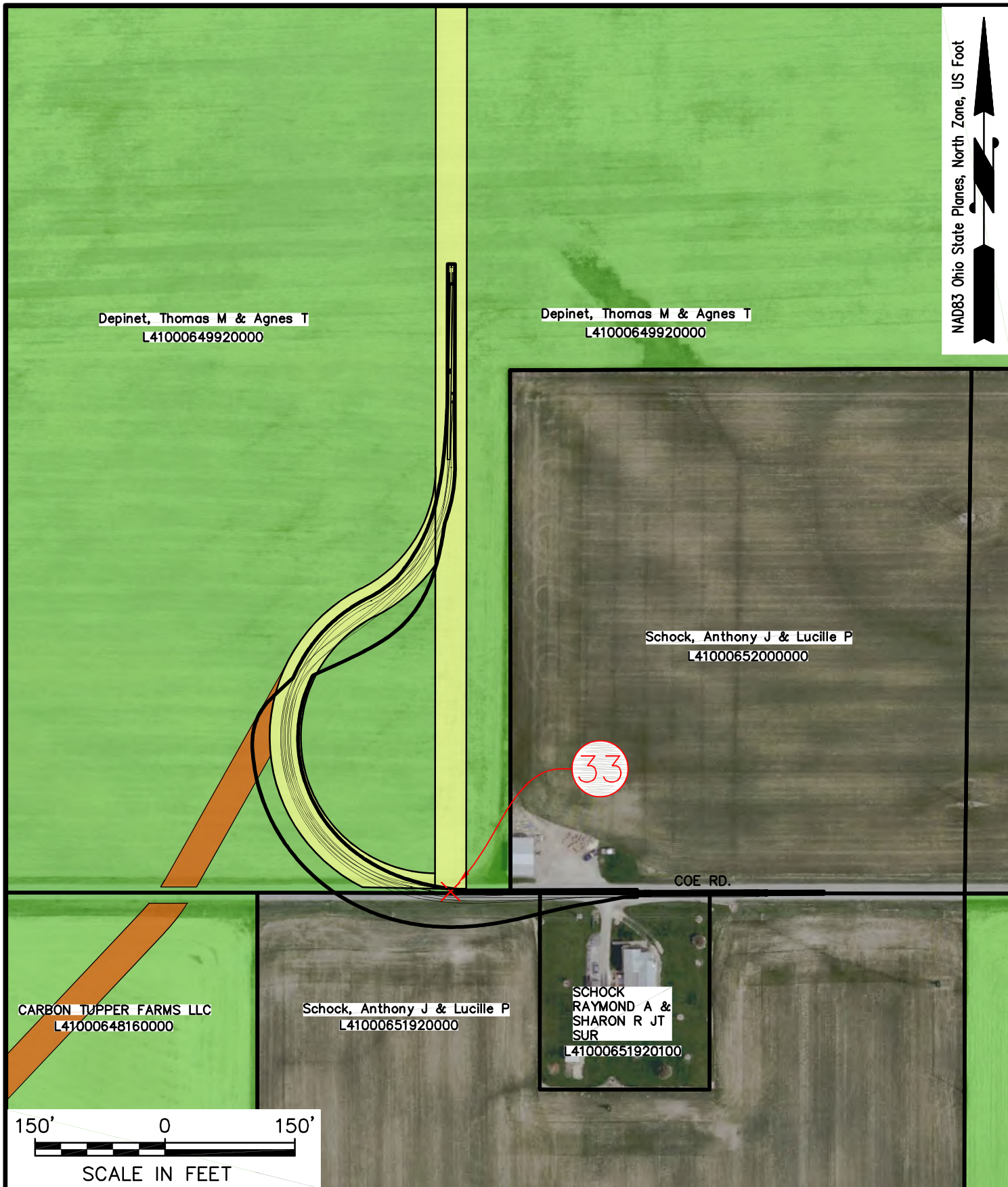
PROJECT: SENECA WIND

PROJECT NO.: 2018031

FIGURE 3
TURNING MOVEMENTS EXHIBIT

DATE: 07/18/18

SHEET: T32



bba

Surveyors | Engineers | Planners

Bennett Brewer & Associates, LLC
23 East Main Street, Suite 200
Frostburg, MD 21532
Phone 301-687-0494

CLIENT:

S-POWER
SUSTAINABLE POWER GROUP

SENECA WIND, LLC
2180 SOUTH 1300 EAST, SUITE 600
SALT LAKE CITY, UT 84106

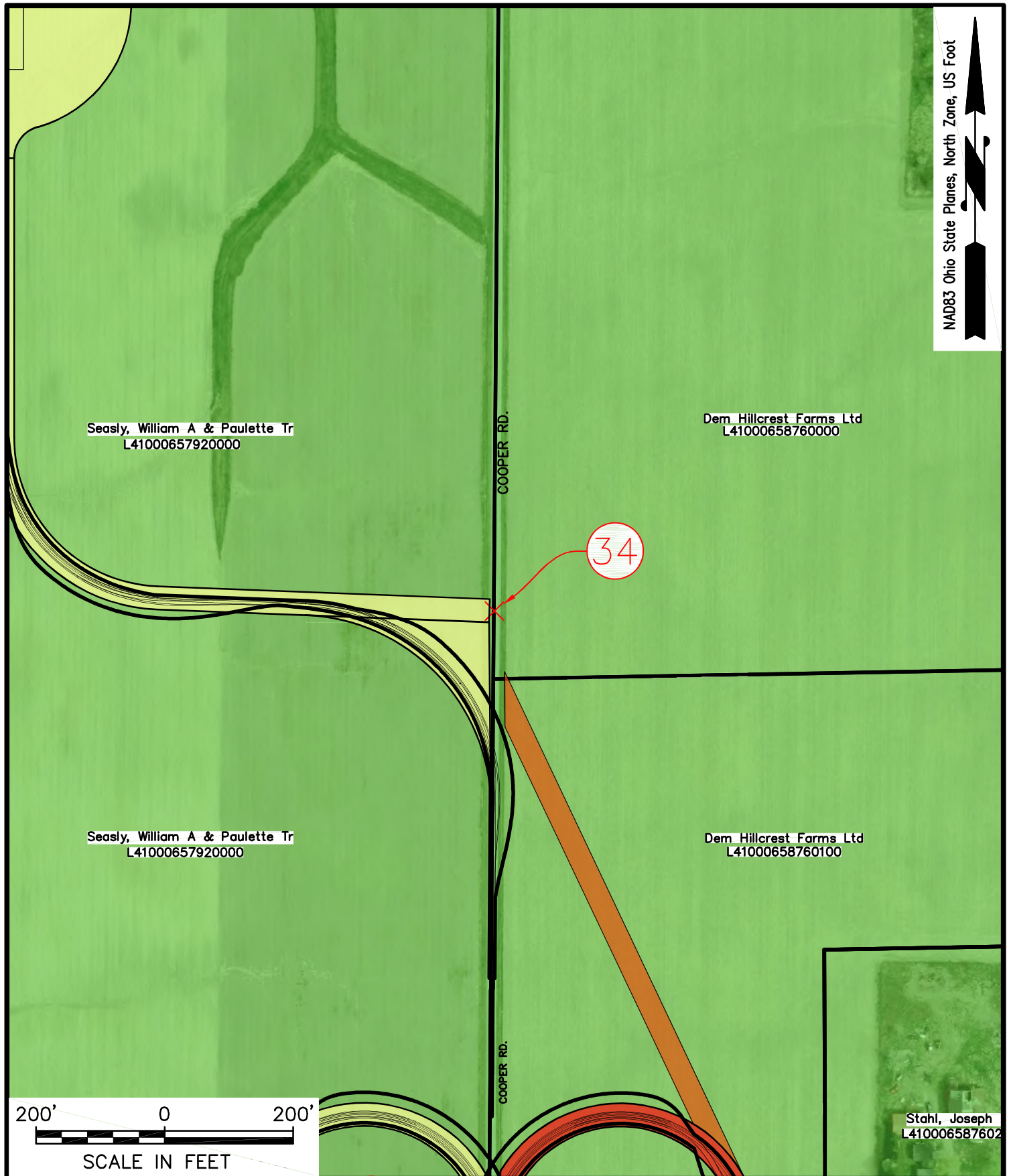
PROJECT: SENECA WIND

PROJECT NO.: 2018031

DATE: 07/18/18

FIGURE 3
TURNING MOVEMENTS EXHIBIT

SHEET: T33



bba

Surveyors | Engineers | Planners

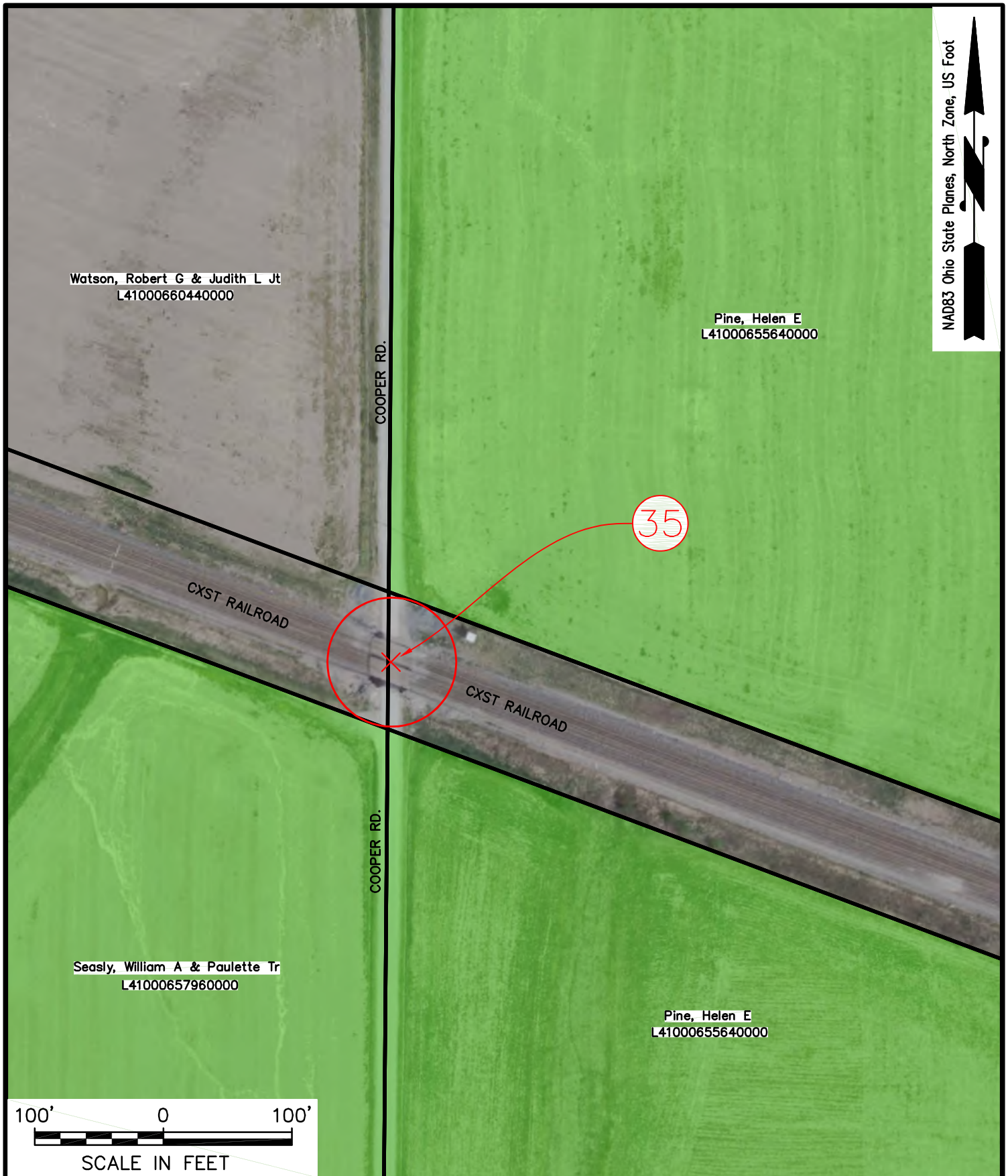
Bennett Brewer & Associates, LLC
23 East Main Street, Suite 200
Frostburg, MD 21532
Phone 301-687-0494

CLIENT:

S-POWER
SUSTAINABLE POWER GROUP

SENECA WIND, LLC
2180 SOUTH 1300 EAST, SUITE 600
SALT LAKE CITY, UT 84106

PROJECT: SENECA WIND	
PROJECT NO.: 2018031	DATE: 07/18/18
FIGURE 3 TURNING MOVEMENTS EXHIBIT	
SHEET: T34	



NAD83 Ohio State Planes, North Zone, US Foot



bba

Surveyors | Engineers | Planners

Bennett Brewer & Associates, LLC
23 East Main Street, Suite 200
Frostburg, MD 21532
Phone 301-687-0494

CLIENT:

S-POWER
SUSTAINABLE POWER GROUP

SENECA WIND, LLC
2180 SOUTH 1300 EAST, SUITE 600
SALT LAKE CITY, UT 84106

PROJECT: SENECA WIND	
PROJECT NO.: 2018031	DATE: 07/18/18
FIGURE 3 TURNING MOVEMENTS EXHIBIT	
SHEET: T35	

NAD83 Ohio State Planes, North Zone, US Foot



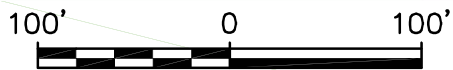
Willman, John C
K40000638360000

36

CXST RAILROAD

CXST RAILROAD

Willman, John C
K40000638360000



SCALE IN FEET

bba

Surveyors | Engineers | Planners

Bennett Brewer & Associates, LLC
23 East Main Street, Suite 200
Frostburg, MD 21532
Phone 301-687-0494

CLIENT:



S-POWER
SUSTAINABLE POWER GROUP

SENECA WIND, LLC
2180 SOUTH 1300 EAST, SUITE 600
SALT LAKE CITY, UT 84106

PROJECT:

SENECA WIND

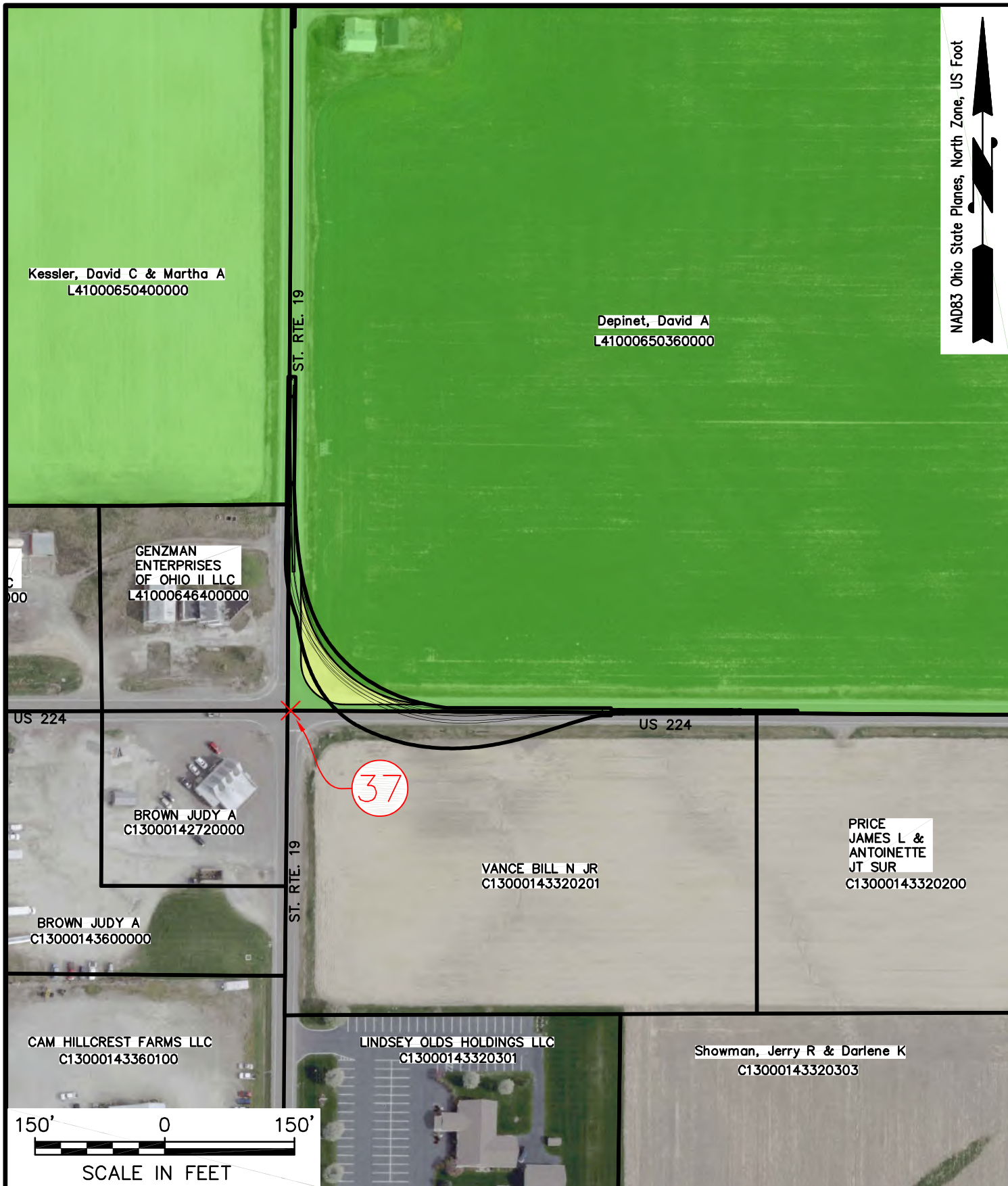
PROJECT NO.: 2018031

DATE: 07/18/18

FIGURE 3
TURNING MOVEMENTS EXHIBIT

SHEET:

T36



bba

Surveyors | Engineers | Planners

Bennett Brewer & Associates, LLC
23 East Main Street, Suite 200
Frostburg, MD 21532
Phone 301-687-0494

CLIENT:

S-POWER
SUSTAINABLE POWER GROUP

SENECA WIND, LLC
2180 SOUTH 1300 EAST, SUITE 600
SALT LAKE CITY, UT 84106

PROJECT: SENECA WIND

PROJECT NO.: 2018031

DATE: 07/18/18

FIGURE 3
TURNING MOVEMENTS EXHIBIT

SHEET: T37

This foregoing document was electronically filed with the Public Utilities

Commission of Ohio Docketing Information System on

7/20/2018 4:32:42 PM

in

Case No(s). 18-0488-EL-BGN

Summary: Correspondence Submitting Appendix E - Part 2 of 3 electronically filed by Teresa Orahod on behalf of Dylan F. Borchers