



COLUMBUS | CLEVELAND
CINCINNATI | DAYTON
MARIETTA

BRICKER & ECKLER LLP
100 South Third Street
Columbus, OH 43215-4291
MAIN: 614.227.2300
FAX: 614.227.2390

www.bricker.com
info@bricker.com

Sally W. Bloomfield
614.227.2368
sbloomfield@bricker.com

March 27, 2018

Ms. Tamara Turkenton
Executive Director
Ohio Power Siting Board
180 East Broad Street, 6th Floor
Columbus, Ohio 43215

Ms. Barcy McNeal
Administration/Docketing
Ohio Power Siting Board
180 East Broad Street, 11th Floor
Columbus, Ohio 43215

Re: In the Matter of the Application of Republic Wind, LLC for a
Certificate to Site Wind-Powered Electric Generation Facilities in
Seneca and Sandusky Counties, OPSB Case No. 17-2295-EL-BGN

Dear Ms. Turkenton and Ms. McNeal:

This letter serves to provide corrections to the Ohio Power Siting Board regarding Republic Wind, LLC's ("Applicant") application for its proposed wind farm ("Facility"). The Applicant submitted its application on February 2, 2018, prepared in accordance with Ohio Administrative Code ("OAC") Rule 4906-4. The clarifications presented in this Supplement are strictly limited to the issue of setbacks. All other information remains as submitted in the original application.

These corrections are necessary because the application does not accurately describe the setbacks that were applied to residences and property lines during the siting of the turbines. The facilities layout was designed based on a currently proposed property line setback of 1.2x total turbine height and a currently proposed residential setback of 1,225 feet + blade length. Given the dimensions of the turbine models proposed for the Facility (see Table 03-2 in the application), these setbacks yield distances as follows:

- Property line setback = $1.2 \times \text{total turbine height} = 1.2 \times 591 \text{ feet} = 709 \text{ feet}$
- Residential setback = $1,225 \text{ feet} + \text{blade length} = 1,225 \text{ feet} + 224.5 \text{ feet} = 1,449.5 \text{ feet}$

In the application, Figures 04-2 and 08-6 were prepared using the current setback standards as prescribed in Ohio Revised Code 4906.20 and OAC Sections 4906-4-08(C)(2)(a) and (b). These figures have been updated for this Supplement to accurately reflect Republic's proposed setbacks that are not yet effective. The updated Constraints Map and Wind Turbine Setbacks Map are attached. All other corrections are detailed below.

Section 4906-4-08(A)(3)(a)

The paragraph immediately before Table 08-2 in Section 4906-4-08(A)(3)(a), found on page 66 of the application, discussed the Facility setbacks. That paragraph should be struck from the application and replaced with the text below, which adds clarifying information in the form of a footnote:

As required by rule 4906-4-08(A)(3)(a)(i) through (vi), the individual pieces of equipment likely to be used for each of these phases and noise levels at 50 feet (near) and 1,457 feet (far), which is the closest distance between a turbine site and non-participating residence, are summarized below in Table 08-2. The expected construction noise levels at the nearest property boundary will be variable, given the varying distances between the turbine sites and property lines. As currently sited, the approximate distance between proposed turbines and the nearest non-participating property line ranges from 548 feet¹ to 2,078 feet, and averages 1,046 feet. Construction noise levels at property lines are expected to be within the range of sound levels presented in Table 08-2.

New Footnote Text: There is one non-participating parcel currently sited approximately 548 feet from a turbine. Negotiations with this landowner are currently underway. Should the landowner ultimately decide not to participate in the project, this turbine location will be dropped. All turbine locations will comply with the Applicant's proposed setbacks of at least 709 feet from non-participating property lines and 1,449.5 feet from non-participating residences.

Section 4906-4-08(A)(4)(a)

The last paragraph of Section 4906-4-08(A)(4)(a), found on page 74 of the application, inaccurately discussed the Facility setbacks. That paragraph should be struck from the application and replaced with the text below, including a new footnote:

Based on the Facility setbacks and the dimensions of the proposed turbines, turbines must be located at least 709 feet from non-participating property lines and 1,449.5 feet from non-participating residences. All turbine locations will comply with these setbacks. As

currently sited, the approximate distance between proposed turbines and the nearest non-participating property line ranges from 548 feet² to 2,078 feet, and averages 1,046 feet. In addition, the approximate distance between proposed turbines and the nearest non-participating residence ranges from 1,457 feet to 2,692 feet, and averages 1,699 feet. Although the exact location of each potable use well cannot be determined with the information obtained to date, it is assumed that the potable wells are located in close proximity to each property owners' residence. Due to the distance between residences and construction activities at proposed turbine sites, this setback will protect wells from any significant negative impact. Therefore, no impact to public or private water supplies is anticipated from the construction or operation of the proposed Facility (Hull, 2017b).

New Footnote Text: There is one non-participating parcel currently sited approximately 548 feet from a turbine. Negotiations with this landowner are currently underway. Should the landowner ultimately decide not to participate in the project, this turbine location will be dropped. All turbine locations will comply with the Applicant's proposed setbacks.

Section 4906-4-08(A)(7)

The last paragraph in Section 4906-4-08(A)(7), found on page 84 of the application, discussed the Facility setbacks. That paragraph should be struck from the application and replaced with the text below, which adds clarifying information in the form of a footnote:

Given the low risk of tower collapse and blade throw, the potential impact is negligible. The Facility's setbacks from permanent residences and adjacent property lines will adequately protect the public from tower collapse and blade throw. The Facility setbacks consist of a minimum of 709 feet from non-participating property lines and 1,449.5 feet from non-participating residences. As currently sited, the approximate distance between proposed turbines and the nearest non-participating residential structure ranges from 1,457 to 2,692 feet, and averages 1,699 feet. The approximate distance between proposed turbines and the nearest non-participating property line ranges from 548 feet³ to 2,078 feet, and averages 1,046 feet.

New Footnote Text: There is one non-participating parcel currently sited approximately 548 feet from a turbine. Negotiations with this landowner are currently underway.

Should the landowner ultimately decide not to participate in the project, this turbine location will be dropped. All turbine locations will comply with the Applicant's proposed setbacks.

Section 4906-4-08(C)(2)(a)

Section 4906-4-08(C)(2)(a), found on page 147 of the application, inaccurately described the Facility's proposed setbacks. That paragraph should be struck from the application and replaced with the text below:

The proposed Facility has been designed such that the distance from a wind turbine base to the property line of the wind farm property must be at least one and two-tenth times the total height of the turbine structure as measured from its tower's base (excluding the subsurface foundation) to the tip of a blade at its highest point. As shown in Table 03-2, the maximum total height of the tallest turbine model under consideration for the Facility is 591 feet. Therefore, setback to the wind farm property line for the proposed Facility is 709 feet (591 feet x 1.2).

Section 4906-4-08(C)(2)(b)

Section 4906-4-08(C)(2)(b), found on page 147-148 of the application, inaccurately discussed the Facility's proposed setbacks. That paragraph should be struck from the application and replaced with the text below:

The proposed Facility has been designed such that the wind turbine must be at least one thousand, two hundred, twenty-five feet in horizontal distance from the tip of the turbine's nearest blade at ninety degrees to non-participating residences. As shown in Table 03-2, the maximum rotor diameter for the turbine models under consideration for the Facility is 449 feet. Therefore, the setback to non-participating residences is 1,449.5 feet $[(449 \text{ feet} \div 2) + 1,225 \text{ feet} = 224.5 \text{ feet} + 1,225 \text{ feet}]$.

Section 4906-4-08(C)(2)(c) and (d)

Section 4906-4-08(C)(2)(c) was inadvertently omitted from the application, and Section 4906-4-08(C)(2)(d) was mislabeled as Section 4906-4-08(C)(2)(c). The following text should be inserted into the application in response to the requirements of Section 4906-4-08(C)(2)(c):

Page 5 of 5

As per OAC 4906-4-08(C)(2)(c), the distance from a wind turbine base to any electric transmission line, gas pipeline, hazardous liquid pipeline, or state or federal highway shall be at least one and one-tenth times the total height of the turbine structure as measured from its tower's base excluding the subsurface foundation to the tip of a blade at its highest point. As shown in Table 03-2, the maximum total height of the tallest turbine model under consideration for the Facility is 591 feet. Therefore, the setback to electric transmission lines, gas pipelines, hazardous liquid pipelines, and state or federal highways is 650 feet (591 feet x 1.1).

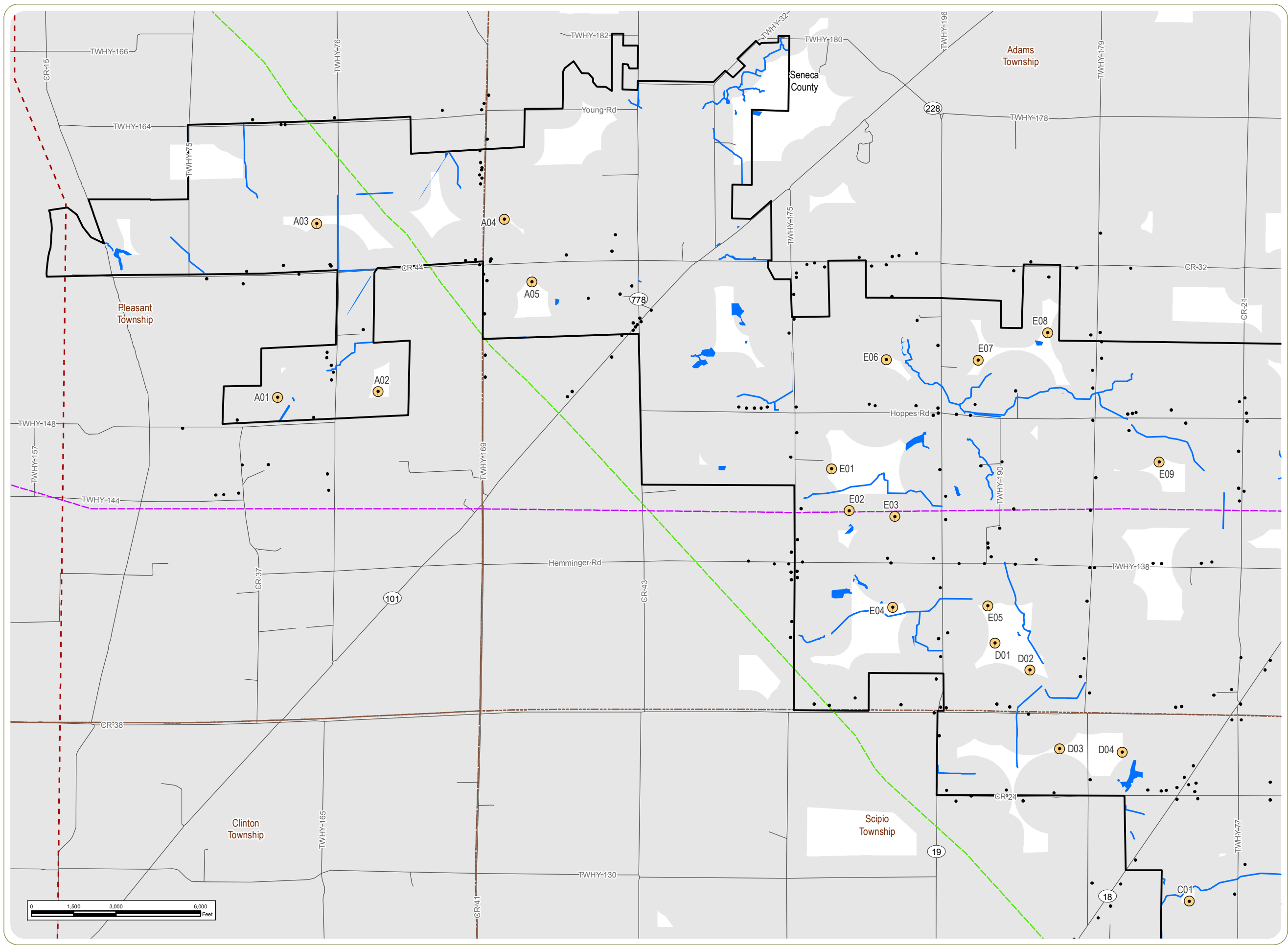
The Applicant respectfully requests that the Board consider this supplemental information as part of the application for its proposed wind farm. As indicated above, aside from the corrections and clarifications presented herein, all other information remains as submitted in the original application.

Very truly yours,

A handwritten signature in blue ink that reads "Sally W. Bloomfield". The signature is written in a cursive, flowing style.

Sally W. Bloomfield

Attachments



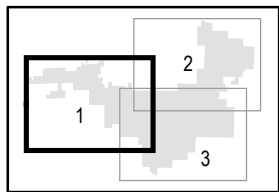
Republic Wind Farm

York Township, Sandusky County, Pleasant, Adams, Thompson, Scipio and Reed Townships, Seneca County, Ohio

Figure 04-2. Constraints Map

- Residential Structure
- Wind Turbine
- Hazardous Liquid Pipeline
- Gas Transmission Pipeline
- - - Existing Transmission Line
- Public Road
- Delineated Surface Water/Wetland
- Wind Turbine Setback
- Project Boundary
- Township Boundary
- County Boundary

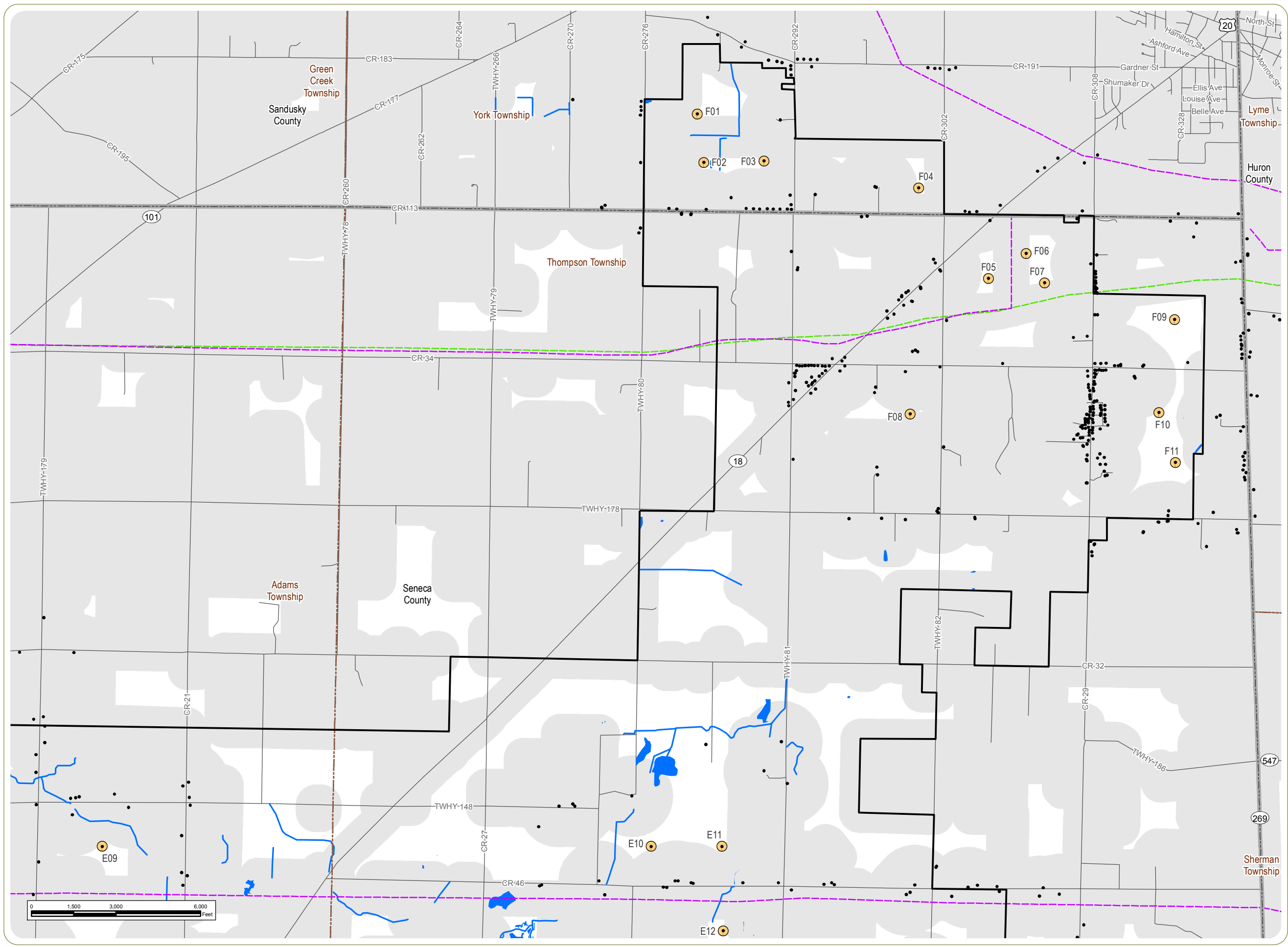
Sheet 1 of 3



Notes:
1. Basemap: ESRI StreetMap North America, 2008
2. This map was generated in ArcMap on March 26, 2018.
3. This is a color graphic. Reproduction in grayscale may misrepresent the data.
4. Facility components and parcel participation status provided by Apex; delineated surface waters/wetlands provided by Cardno.
5. Map Scale 1:40,000



www.edrdpc.com



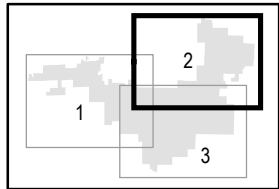
Republic Wind Farm

York Township, Sandusky County, Pleasant, Adams, Thompson, Scipio and Reed Townships, Seneca County, Ohio

Figure 04-2. Constraints Map

- Residential Structure
- Wind Turbine
- Hazardous Liquid Pipeline
- Gas Transmission Pipeline
- Public Road
- Delineated Surface Water/Wetland
- Wind Turbine Setback
- Project Boundary
- Township Boundary
- County Boundary

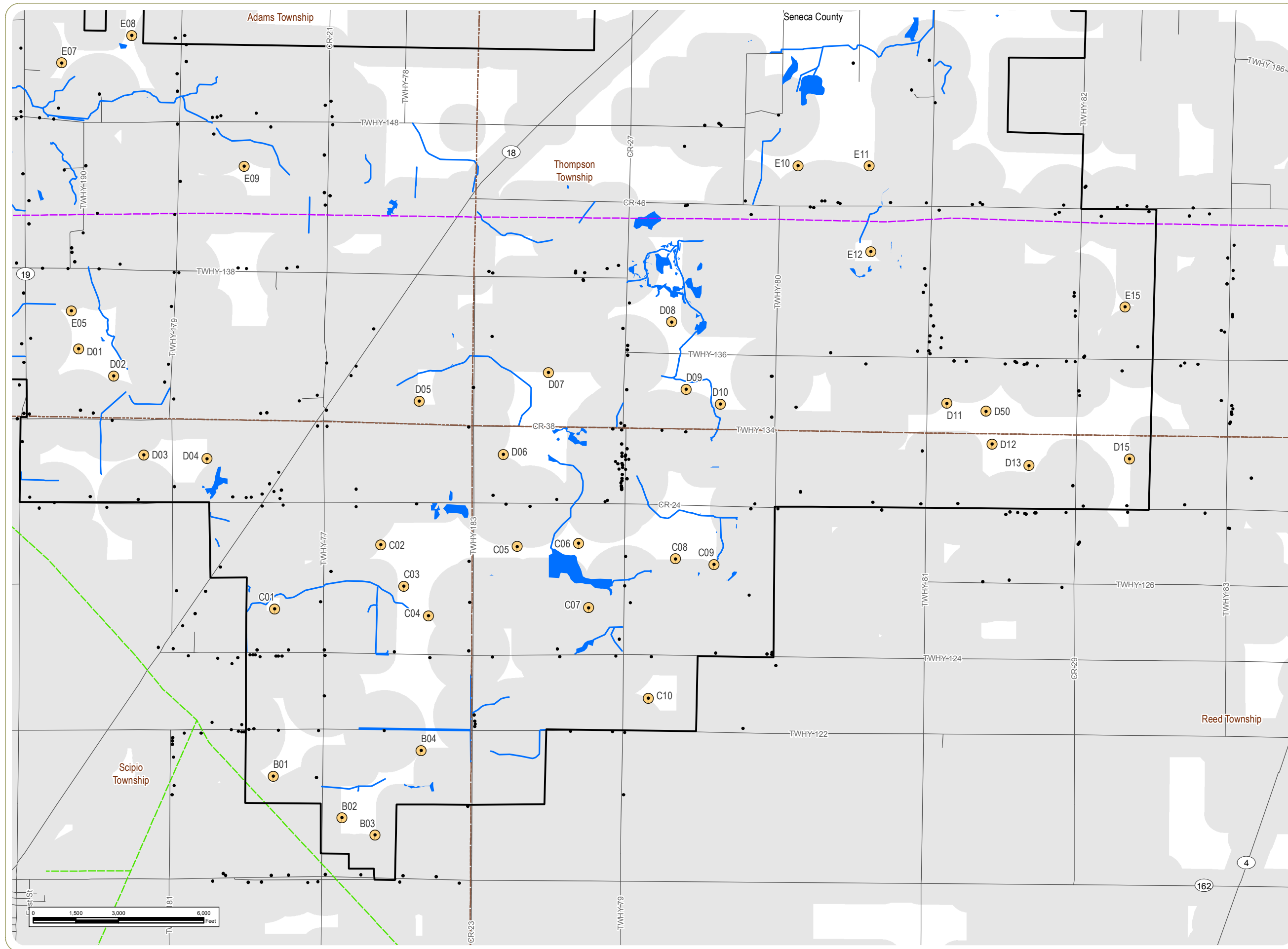
Sheet 2 of 3



Notes:
1. Basemap: ESRI StreetMap North America, 2008
2. This map was generated in ArcMap on March 26, 2018.
3. This is a color graphic. Reproduction in grayscale may misrepresent the data.
4. Facility components and parcel participation status provided by Apex; delineated surface waters/wetlands provided by Cardno.
5. Map Scale 1:40,000



www.edrdpc.com



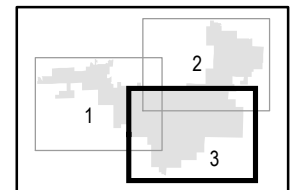
Republic Wind Farm

York Township, Sandusky County, Pleasant, Adams, Thompson, Scipio and Reed Townships, Seneca County, Ohio

Figure 04-2. Constraints Map

- Residential Structure
- Wind Turbine
- Hazardous Liquid Pipeline
- Gas Transmission Pipeline
- Public Road
- Delineated Surface Water/Wetland
- Wind Turbine Setback
- ▭ Project Boundary
- ▭ Township Boundary
- ▭ County Boundary

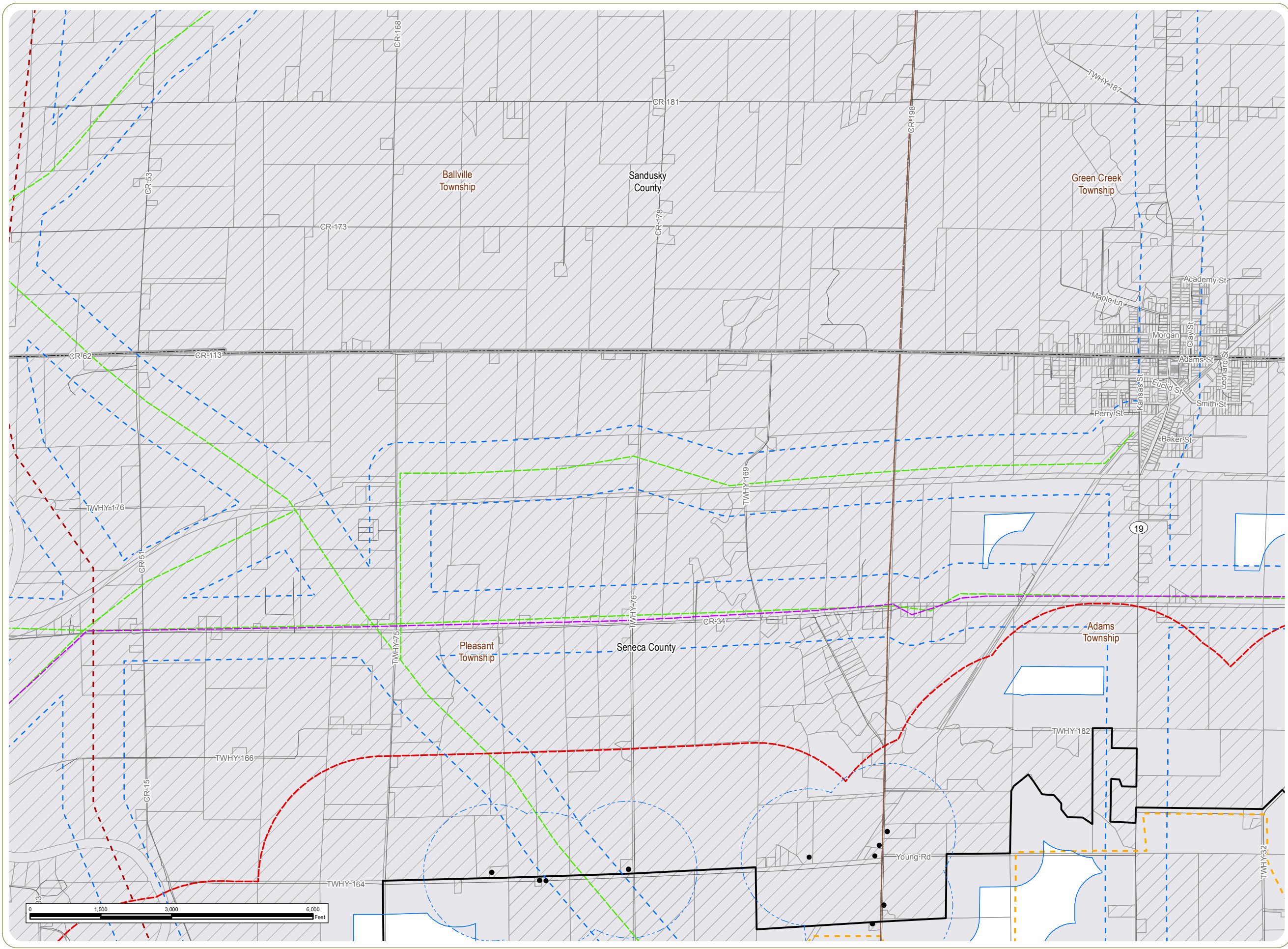
Sheet 3 of 3

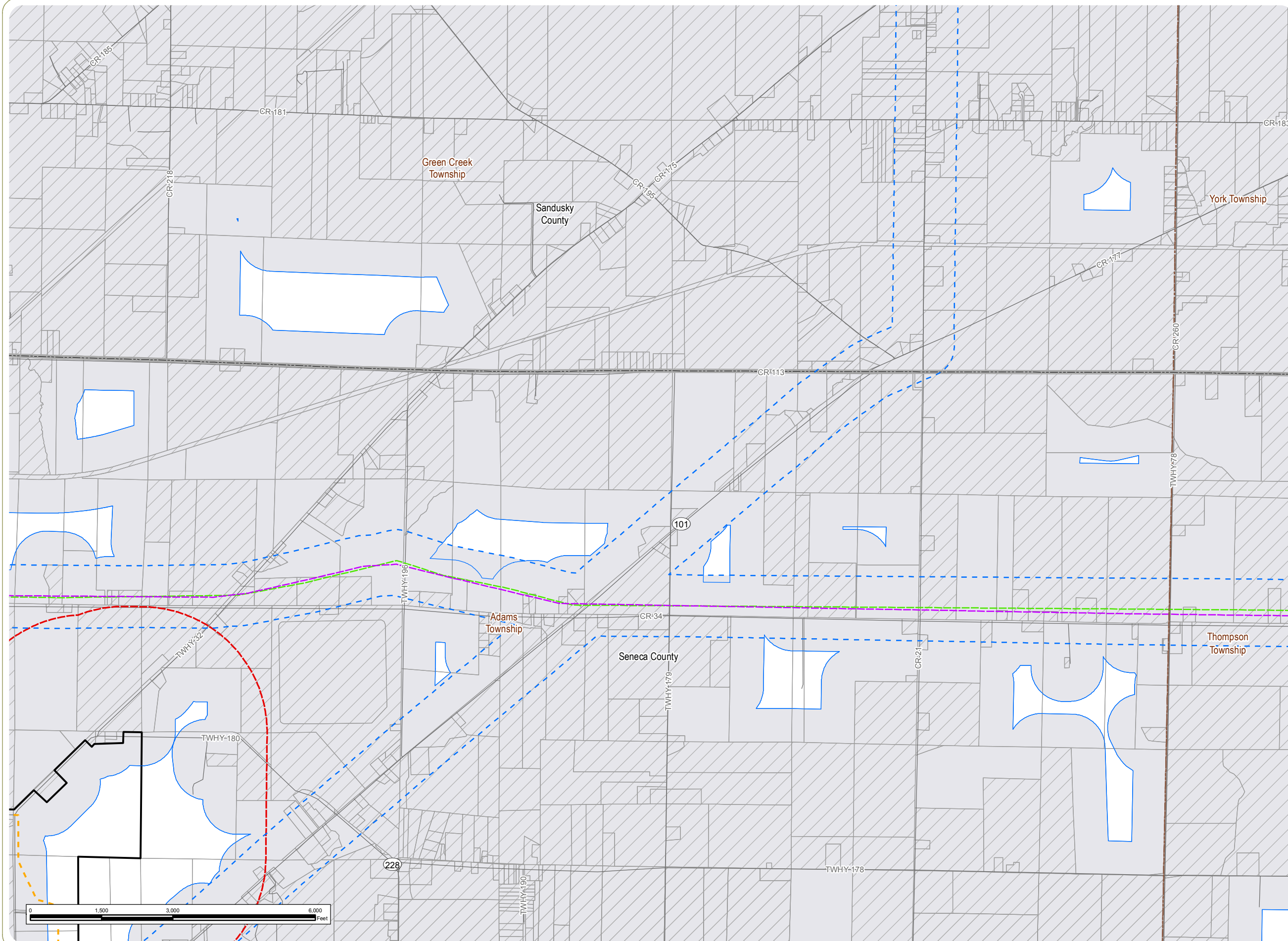


Notes:

1. Basemap: ESRI StreetMap North America, 2008
2. This map was generated in ArcMap on March 26, 2018.
3. This is a color graphic. Reproduction in grayscale may misrepresent the data.
4. Facility components and parcel participation status provided by Apex; delineated surface waters/wetlands provided by Cardno.
5. Map Scale 1:40,000





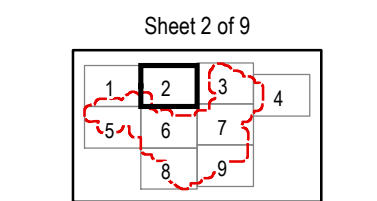


Republic Wind Farm

York Township, Sandusky County, Pleasant, Adams, Thompson, Scipio and Reed Townships, Seneca County, Ohio

Figure 08-6. Wind Turbine Setbacks

- Collection Line
- Hazardous Liquid Pipeline
- Gas Transmission Pipeline
- 650-foot Setback from Major Roads, Transmission Lines, and Pipelines
- 709-foot Setback from Non-Participating Parcels
- Participating Parcel
- Non-Participating Parcel
- Project Boundary
- Half-Mile Study Area
- Township Boundary
- County Boundary



Notes:
1. Basemap: ESRI StreetMap North America, 2008 2. This map was generated in ArcMap on March 26, 2018. 3. This is a color graphic. Reproduction in grayscale may misrepresent the data. 4. Facility components provided by Apex. 5. Map Scale 1:24,000



York Township, Sandusky
County, Pleasant, Adams,
Thompson, Scipio and Reed
Townships, Seneca County,
Ohio

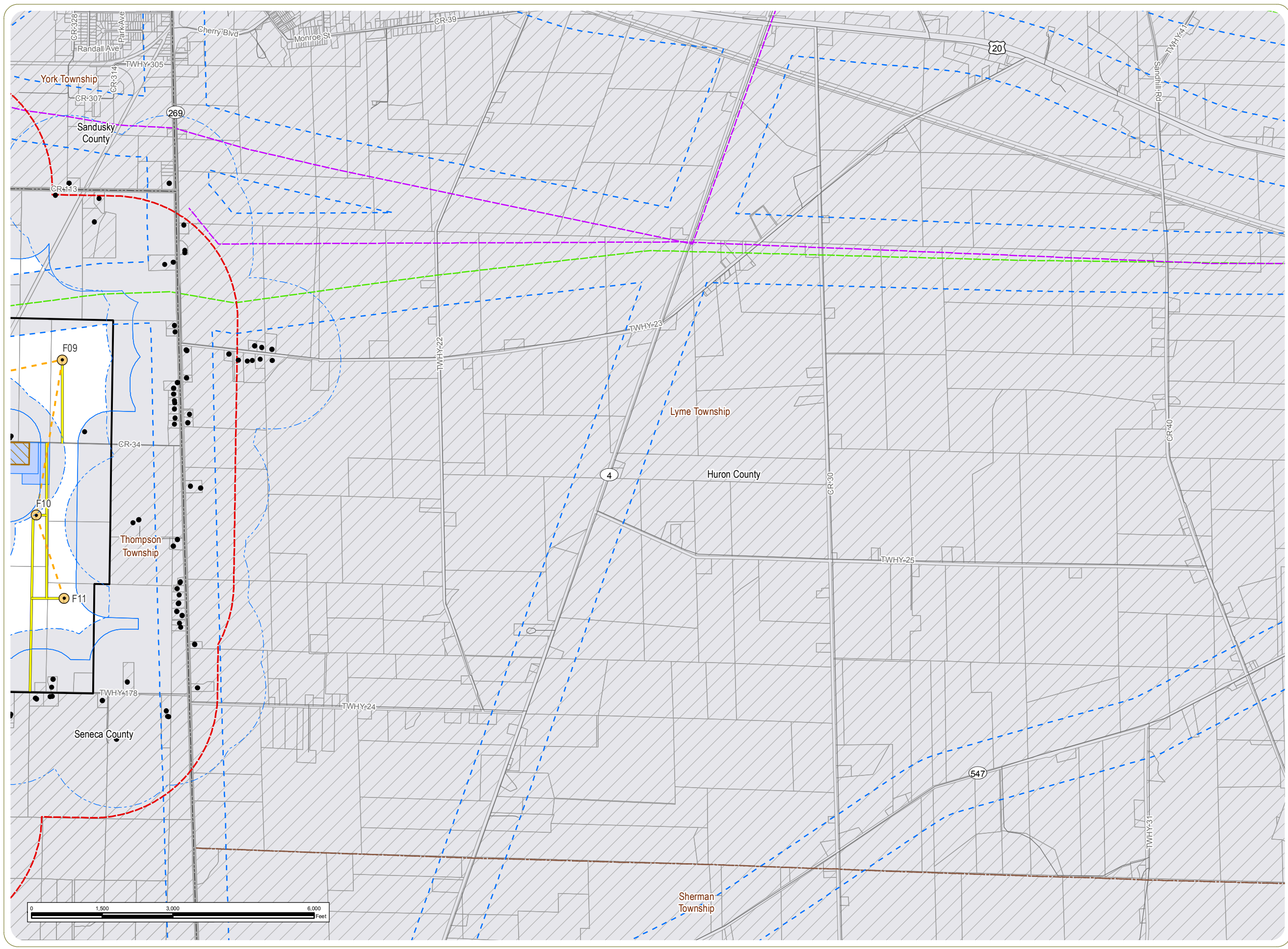
- Residential Structure
- ⦿ Wind Turbine
- - - Collection Line
- Access Road
- - - Hazardous Liquid Pipeline
- - - Gas Transmission Pipeline
- ▨ O&M Facility
- ▭ Laydown Yard
- ▭ 1,449.5-foot Setback from Non-Participating Residences
- ▭ 650-foot Setback from Major Roads, Transmission Lines, and Pipelines
- ▭ 709-foot Setback from Non-Participating Parcels
- ▭ Participating Parcel
- ▨ Non-Participating Parcel
- ▭ Project Boundary
- ▭ Half-Mile Study Area
- ▭ Township Boundary
- ▭ County Boundary

A 3x3 grid with numbers 1 through 9. A red path is drawn through the cells, starting at 1, going to 5, 6, 8, 9, 7, 4, and ending at 3. Cell 3 is highlighted with a thick black border.

1. Basemap: ESRI StreetMap North America, 2008 2. This map was generated in ArcMap on March 26, 2018. 3. This is a color graphic. Reproduction in grayscale may misrepresent the data. 4. Facility components provided by Apex. 5. Map Scale 1:24,000



www.edrdpc.com



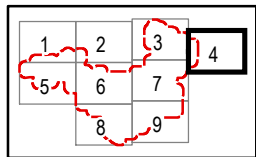
Republic Wind Farm

York Township, Sandusky County, Pleasant, Adams, Thompson, Scipio and Reed Townships, Seneca County, Ohio

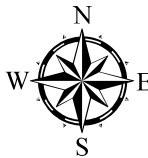
Figure 08-6. Wind Turbine Setbacks

- Residential Structure
- Wind Turbine
- - - Collection Line
- Access Road
- Hazardous Liquid Pipeline
- Gas Transmission Pipeline
- ▨ O&M Facility
- ▨ Laydown Yard
- ▨ 1,449.5-foot Setback from Non-Participating Residences
- ▨ 650-foot Setback from Major Roads, Transmission Lines, and Pipelines
- ▨ 709-foot Setback from Non-Participating Parcels
- ▨ Participating Parcel
- ▨ Non-Participating Parcel
- ▨ Project Boundary
- ▨ Half-Mile Study Area
- ▨ Township Boundary
- ▨ County Boundary

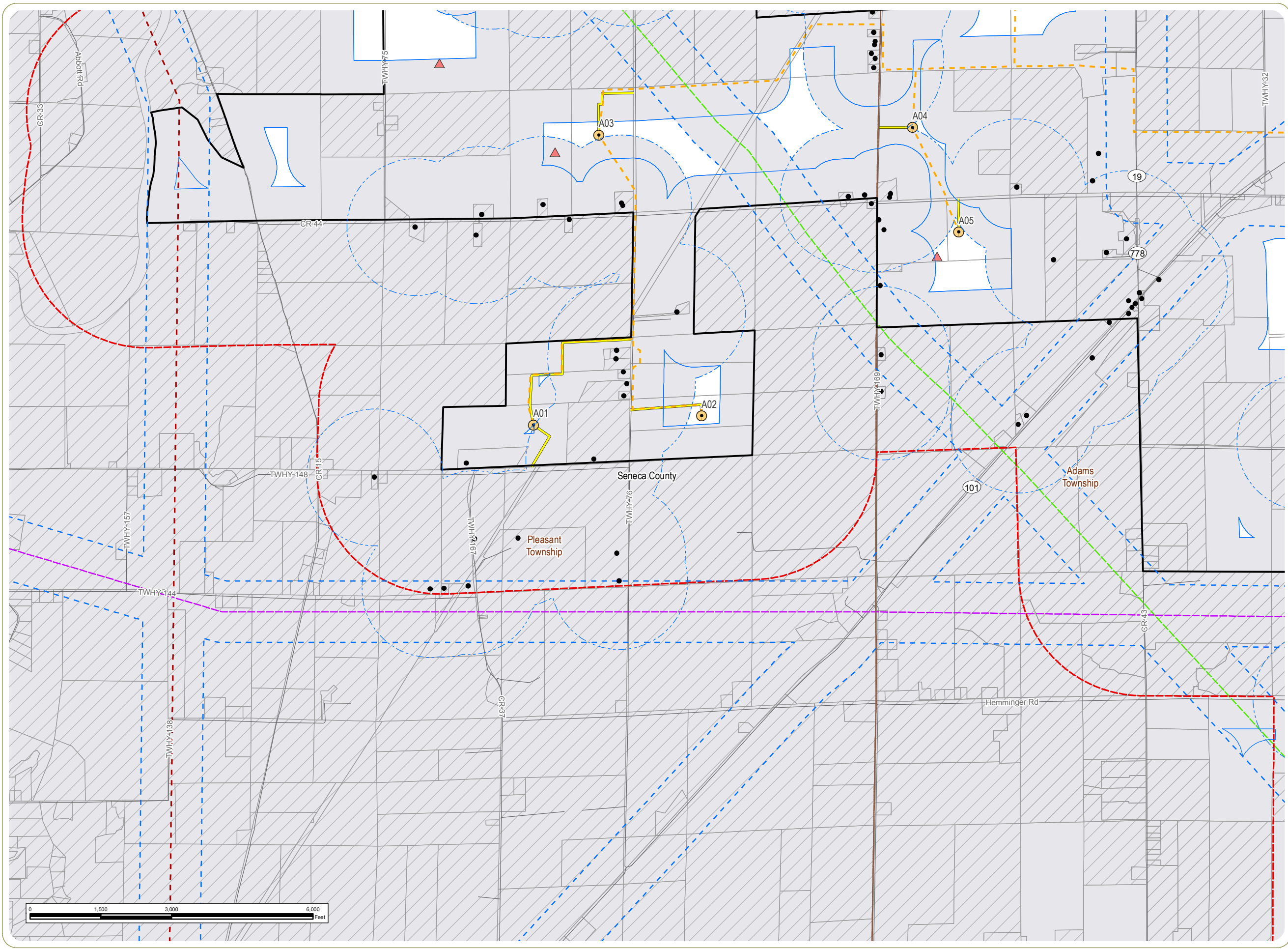
Sheet 4 of 9



Notes:
1. Basemap: ESRI StreetMap North America, 2008 2. This map was generated in ArcMap on March 26, 2018. 3. This is a color graphic. Reproduction in grayscale may misrepresent the data. 4. Facility components provided by Apex. 5. Map Scale 1:24,000



www.edrdpc.com



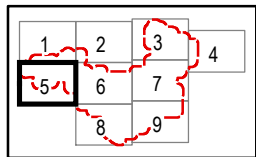
Republic Wind Farm

York Township, Sandusky County, Pleasant, Adams, Thompson, Scipio and Reed Townships, Seneca County, Ohio

Figure 08-6. Wind Turbine Setbacks

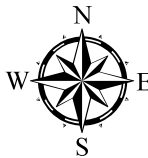
- Residential Structure
- Wind Turbine
- ▲ Met Tower
- - - Collection Line
- Access Road
- Hazardous Liquid Pipeline
- Gas Transmission Pipeline
- - - Existing Transmission Line
- 1,449.5-foot Setback from Non-Participating Residences
- 650-foot Setback from Major Roads, Transmission Lines, and Pipelines
- 709-foot Setback from Non-Participating Parcels
- Participating Parcel
- ▨ Non-Participating Parcel
- ▭ Project Boundary
- ▭ Half-Mile Study Area
- ▭ Township Boundary
- ▭ County Boundary

Sheet 5 of 9

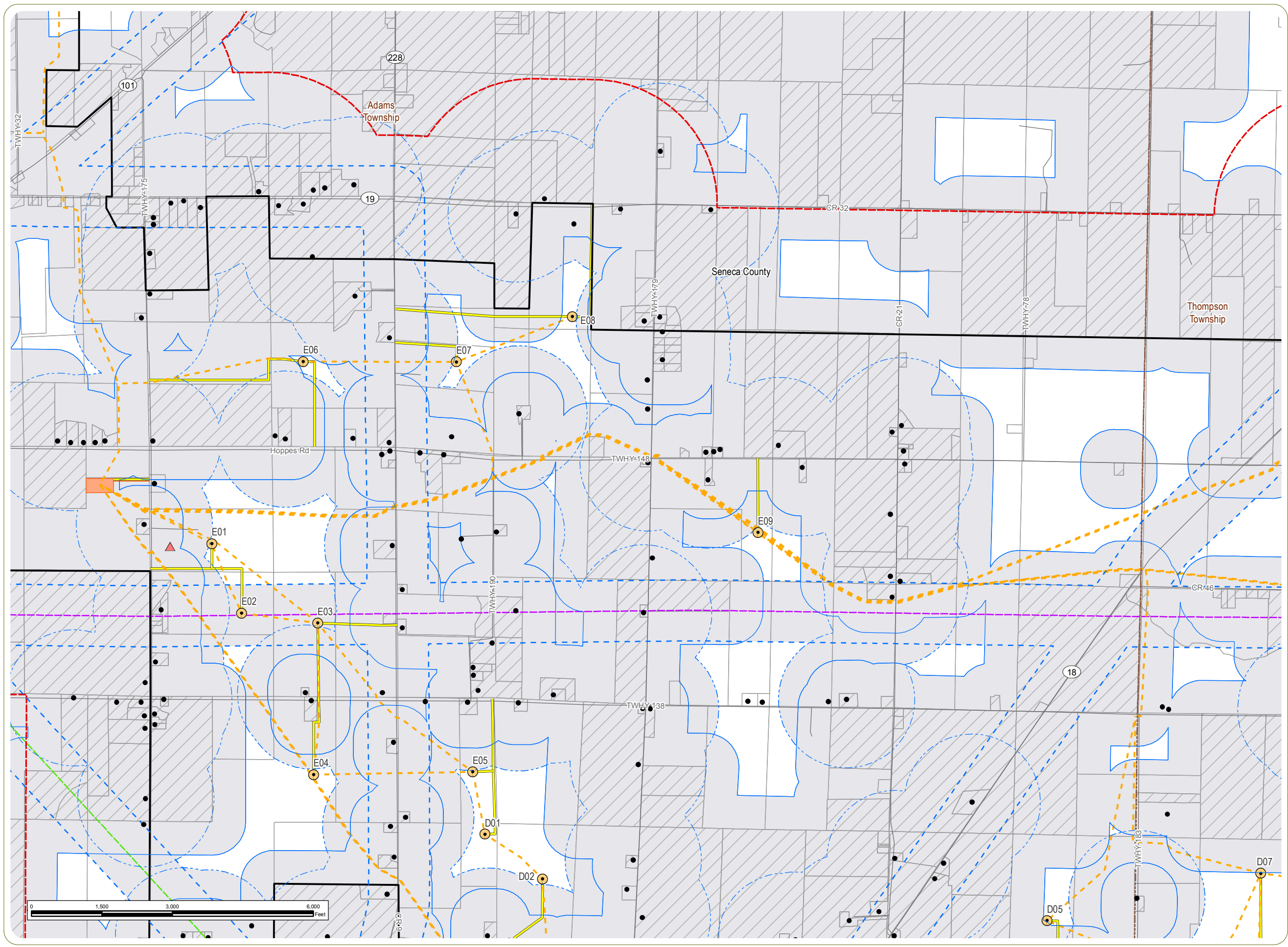


Notes:

1. Basemap: ESRI StreetMap North America, 2008 2. This map was generated in ArcMap on March 26, 2018. 3. This is a color graphic. Reproduction in grayscale may misrepresent the data. 4. Facility components provided by Apex. 5. Map Scale 1:24,000



www.edrdpc.com



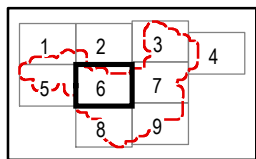
Republic Wind Farm

York Township, Sandusky County, Pleasant, Adams, Thompson, Scipio and Reed Townships, Seneca County, Ohio

Figure 08-6. Wind Turbine Setbacks

- Residential Structure
- Wind Turbine
- ▲ Met Tower
- - - Collection Line
- Access Road
- - - Hazardous Liquid Pipeline
- - - Gas Transmission Pipeline
- Collection Substation
- - - 1,449.5-foot Setback from Non-Participating Residences
- - - 650-foot Setback from Major Roads, Transmission Lines, and Pipelines
- - - 709-foot Setback from Non-Participating Parcels
- Participating Parcel
- ▨ Non-Participating Parcel
- ▭ Project Boundary
- - - Half-Mile Study Area
- - - Township Boundary
- - - County Boundary

Sheet 6 of 9




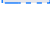


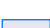
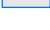





Notes:
1. Basemap: ESRI StreetMap North America, 2008 2. This map was generated in ArcMap on March 26, 2018. 3. This is a color graphic. Reproduction in grayscale may misrepresent the data. 4. Facility components provided by Apex. 5. Map Scale 1:24,000



www.edrdpc.com

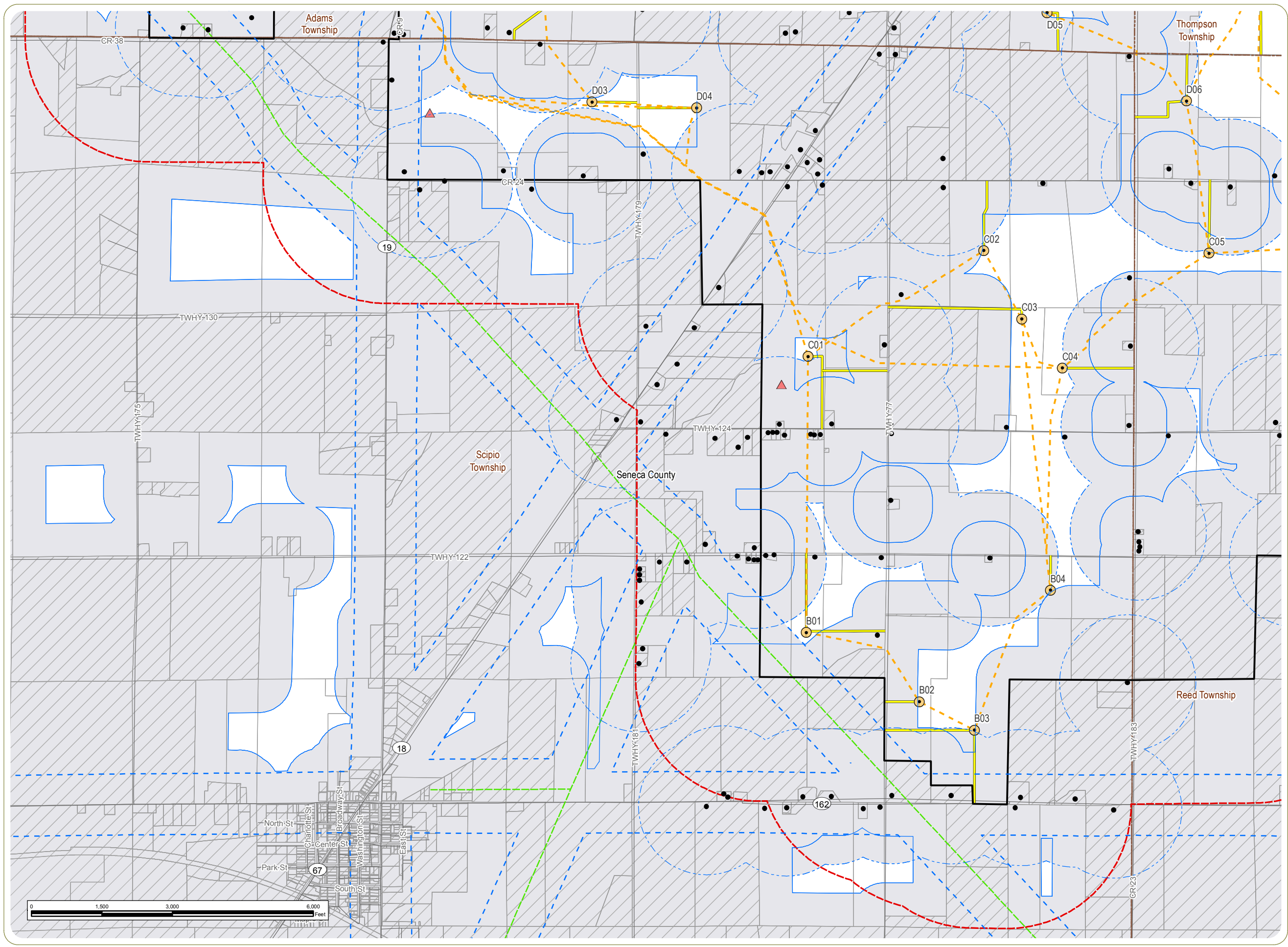
York Township, Sandusky
County, Pleasant, Adams,
Thompson, Scipio and Reed
Townships, Seneca County,
Ohio

- Residential Structure
- Wind Turbine
- - - Collection Line
- Access Road
- - - Hazardous Liquid Pipeline
-  O&M Facility
-  Laydown Yard
-  1,449.5-foot Setback from Non-Participating Residences
-  650-foot Setback from Major Roads, Transmission Lines, and Pipelines
-  709-foot Setback from Non-Participating Parcels
-  Participating Parcel
-  Non-Participating Parcel
-  Project Boundary
-  Half-Mile Study Area
-  Township Boundary
-  County Boundary

Notes:
1. Basemap: ESRI StreetMap North America, 2008 2. This map was generated in ArcMap on March 26, 2018. 3. This is a color graphic. Reproduction in grayscale may misrepresent the data. 4. Facility components provided by Apex. 5. Map Scale 1:24,000



www.edrdpc.com



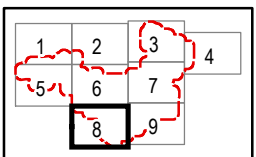
Republic Wind Farm

York Township, Sandusky County, Pleasant, Adams, Thompson, Scipio and Reed Townships, Seneca County, Ohio

Figure 08-6. Wind Turbine Setbacks

- Residential Structure
- Wind Turbine
- ▲ Met Tower
- - - Collection Line
- Access Road
- Gas Transmission Pipeline
- 1,449.5-foot Setback from Non-Participating Residences
- 650-foot Setback from Major Roads, Transmission Lines, and Pipelines
- 709-foot Setback from Non-Participating Parcels
- Participating Parcel
- Non-Participating Parcel
- Project Boundary
- Half-Mile Study Area
- Township Boundary
- County Boundary

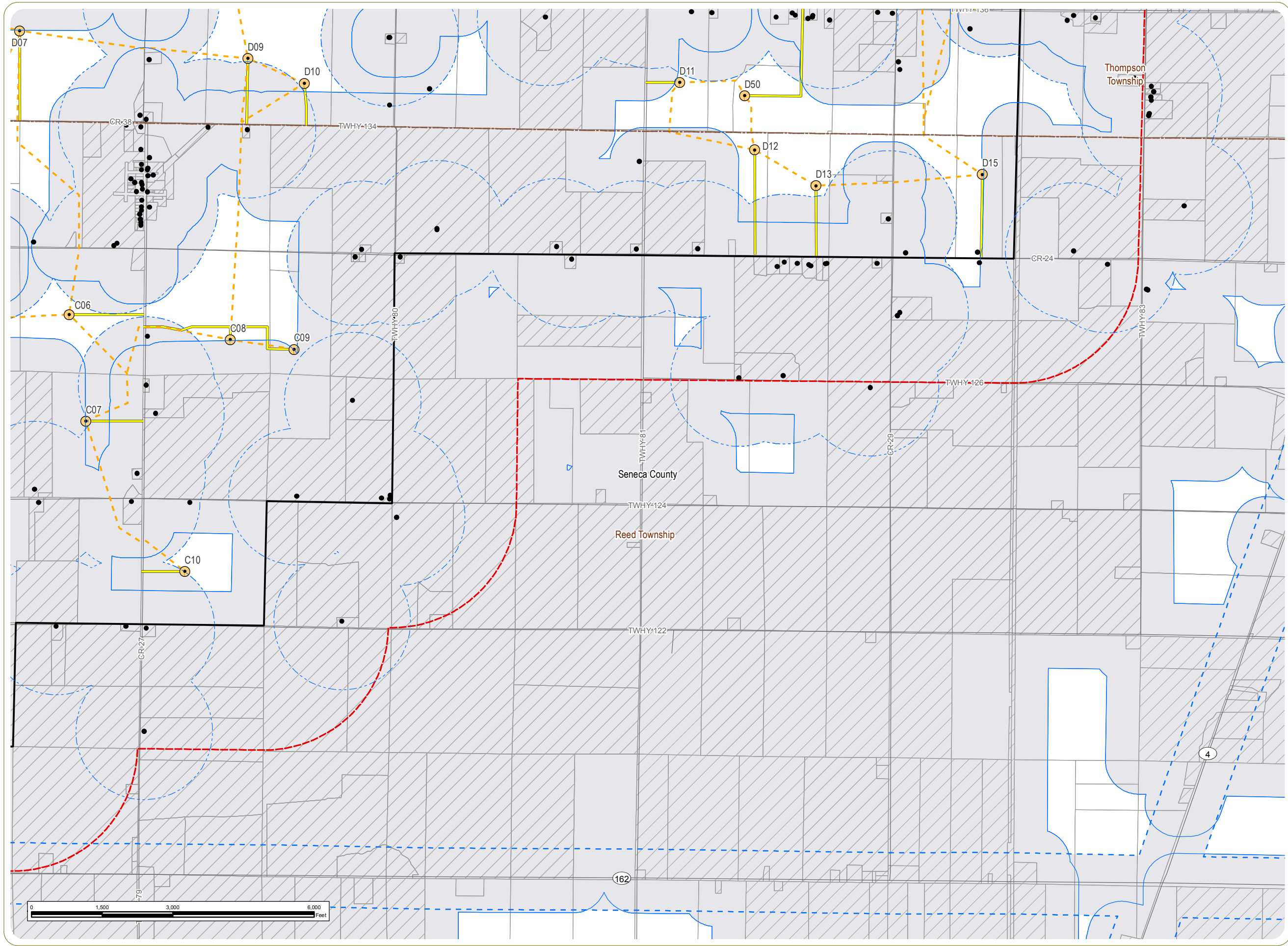
Sheet 8 of 9



Notes:
1. Basemap: ESRI StreetMap North America, 2008 2. This map was generated in ArcMap on March 26, 2018. 3. This is a color graphic. Reproduction in grayscale may misrepresent the data. 4. Facility components provided by Apex. 5. Map Scale 1:24,000



www.edrdpc.com



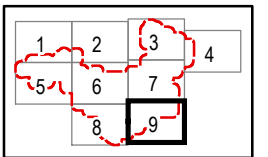
Republic Wind Farm

York Township, Sandusky County, Pleasant, Adams, Thompson, Scipio and Reed Townships, Seneca County, Ohio

Figure 08-6. Wind Turbine Setbacks

- Residential Structure
- Wind Turbine
- - - Collection Line
- Access Road
- 1,449.5-foot Setback from Non-Participating Residences
- 650-foot Setback from Major Roads, Transmission Lines, and Pipelines
- 709-foot Setback from Non-Participating Parcels
- Participating Parcel
- Non-Participating Parcel
- Project Boundary
- Half-Mile Study Area
- Township Boundary
- County Boundary

Sheet 9 of 9



Notes:
1. Basemap: ESRI StreetMap North America, 2008 2. This map was generated in ArcMap on March 26, 2018. 3. This is a color graphic. Reproduction in grayscale may misrepresent the data. 4. Facility components provided by Apex. 5. Map Scale 1:24,000



www.edrdpc.com

This foregoing document was electronically filed with the Public Utilities

Commission of Ohio Docketing Information System on

3/27/2018 10:23:28 AM

in

Case No(s). 17-2295-EL-BGN

Summary: Notice Republic Wind's supplement to the application regarding setbacks electronically filed by Mr. Devin D. Parram on behalf of Republic Wind