

Figure 10. Fieldwork results and photo orientations for Sheet 6.



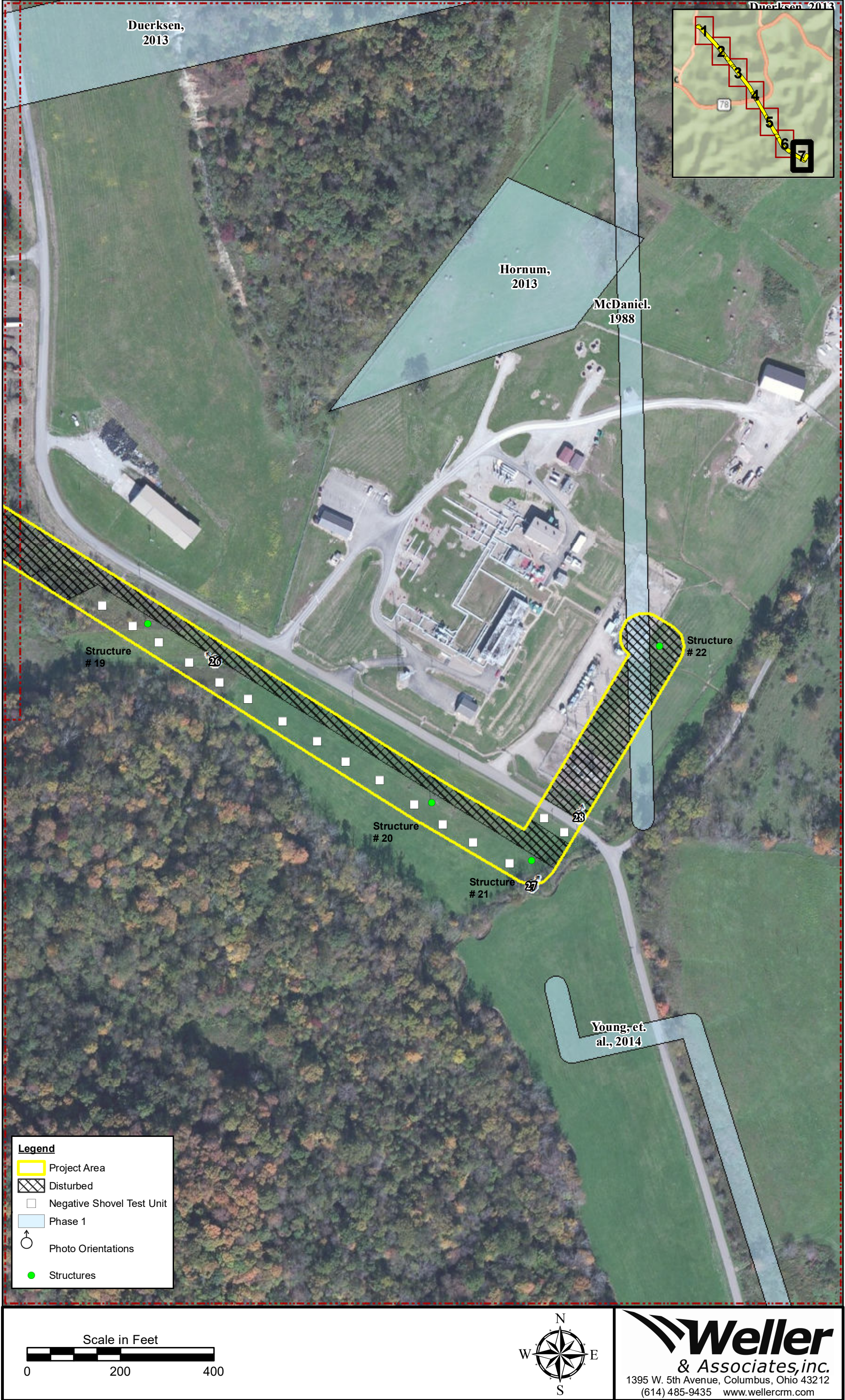


Figure 11. Fieldwork results and photo orientations for Sheet 7.





Figure 12. View of sloped conditions near structure 1, in the northern portion of the project.



Figure 13. View of sloped conditions near structure 3, in the northern portion of the project.





Figure 14. View of sloped conditions, facing northeast, near structure 4.



Figure 15. View of sloped conditions, facing southeast, near structure 5.





Figure 16. View of sloped conditions, facing southeast, towards structure 6.



Figure 17. View of sloped conditions, facing northeast, towards structure 7.





Figure 18. View of sloped conditions, facing southeast, towards structure 8.



Figure 18. View of sloped conditions, facing southeast, near structure 11.





Figure 20. View of sloped conditions, facing southeast, towards structure13.



Figure 21. View of sloped conditions, facing southeast towards structure 14.





Figure 22. View of sloped conditions, facing southeast, near structure 14.



Figure 23. View of sloped conditions, facing southeast, near structure 16.





Figure 24. View of conditions, facing southeast, near structure 17, showing the southeastern portion of the project.



Figure 25. View of the existing gas pad, facing southeast, near structure 18.





Figure 26. View of disturbed conditions, near structure 19.



Figure 27. View of disturbed conditions, facing the existing substation in the southern portion of the project, near structure 21.





Figure 28. View of the existing substation in the southern portion of the project, facing structure 22.



Figure 29. View of a disturbed shovel probe within the project.



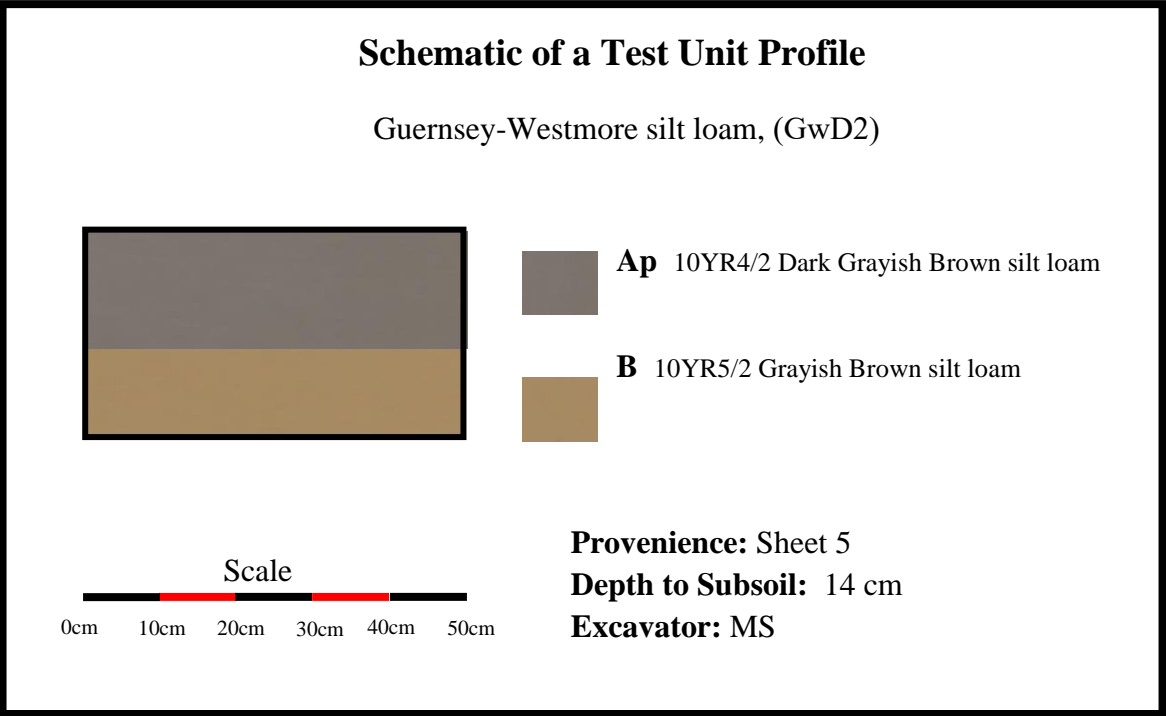


Figure 30. Schematic of a typical test unit within the project.





Figure 31. S-1 Property.



Figure 32. S-1 House.





Figure 33. S-2 Property.



Figure 34. S-2 House.





Figure 35. S-3 House.



Figure 36. S-3 House.



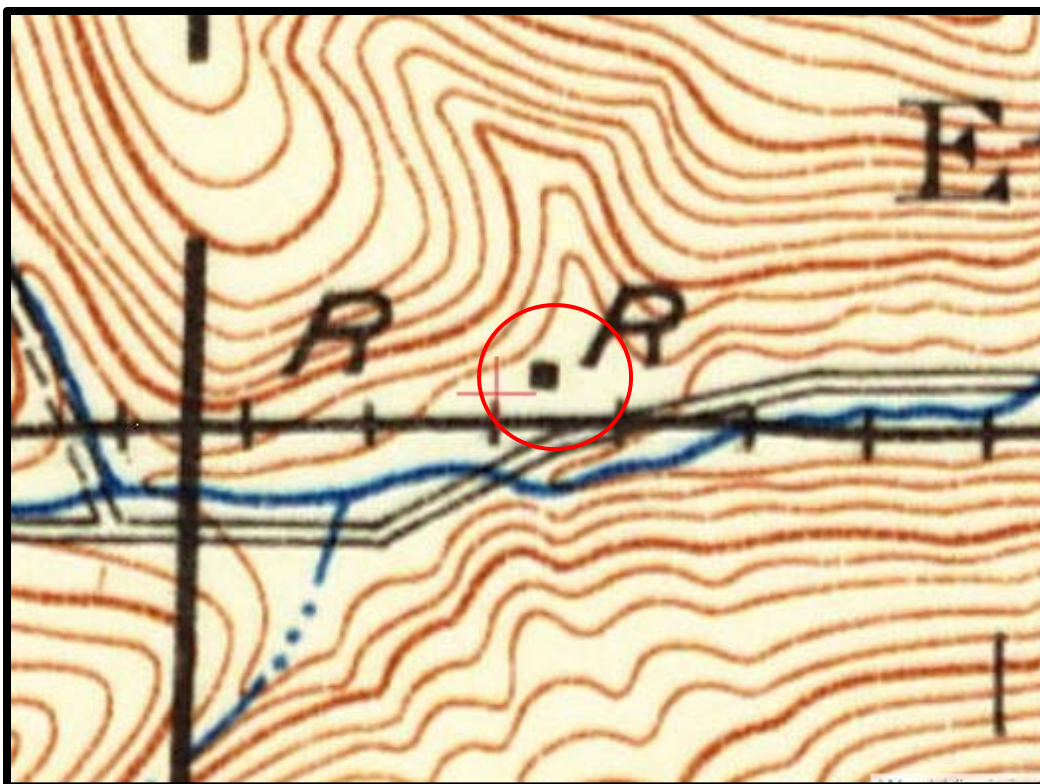


Figure 37. S-1 indicated on the 1909 Summerfield Ohio Quadrangle Topographic Map.



Figure 38. S-1 indicated on the 1961 Summerfield Ohio Quadrangle Topographic Map.



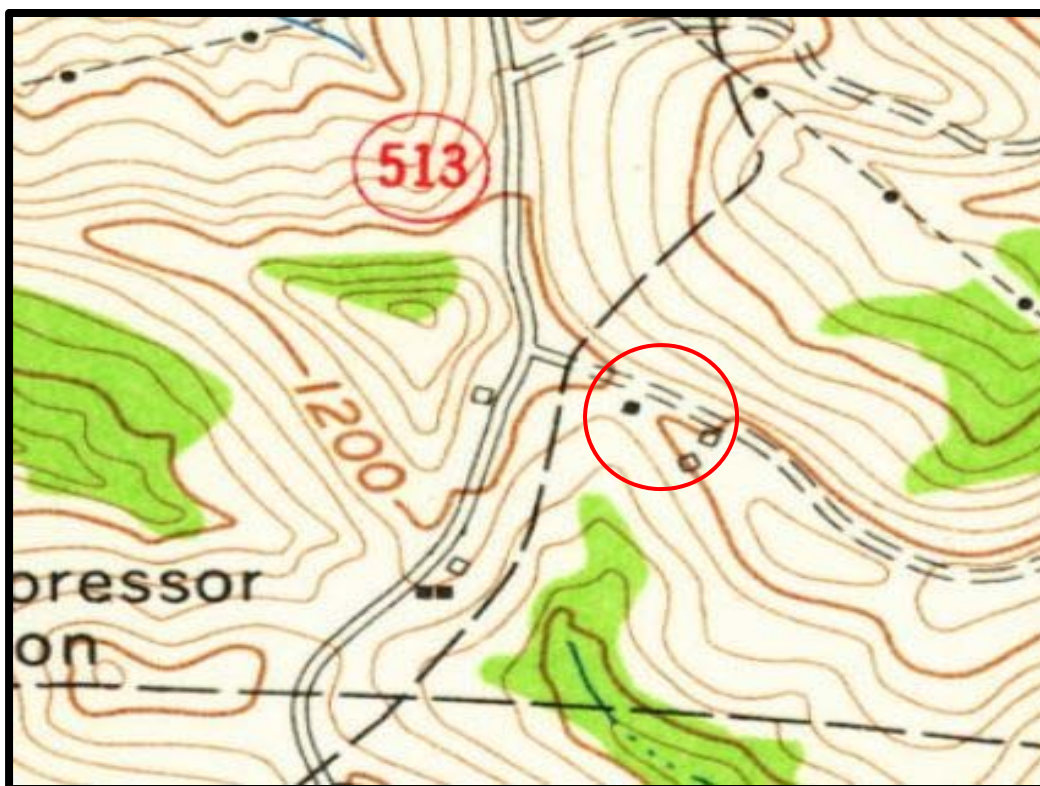


Figure 39. S-2 indicated on the 1961 Summerfield Ohio Quadrangle Topographic Map.

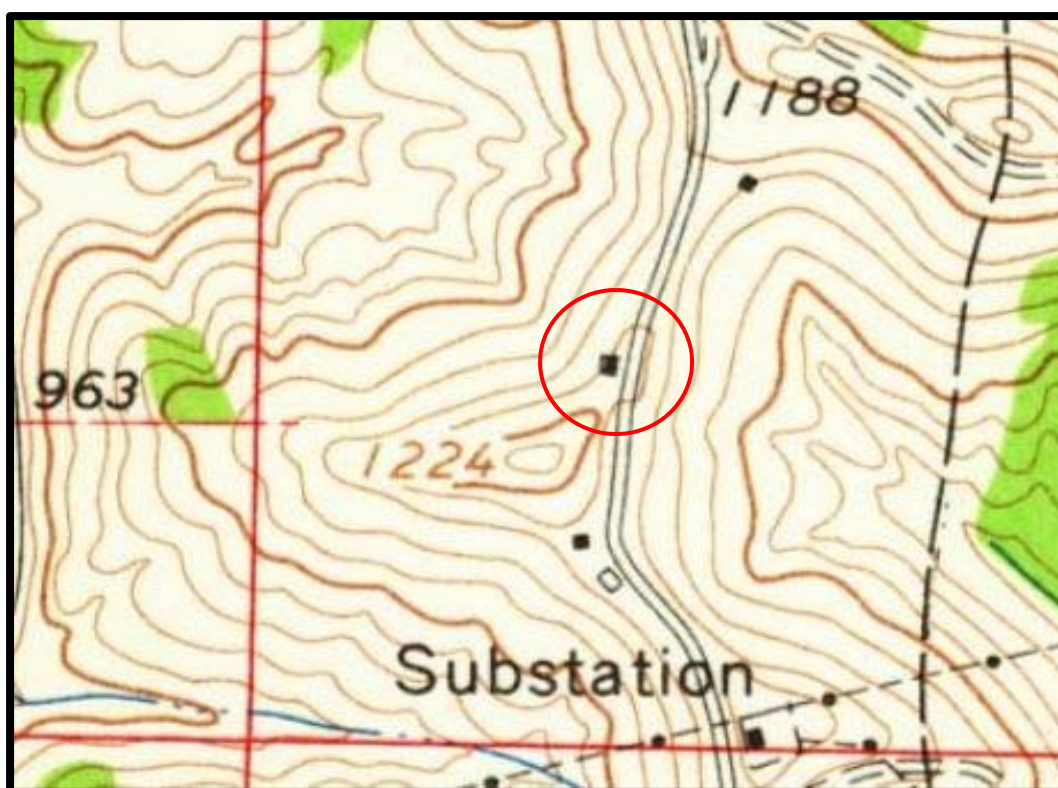


Figure 40. S-3 indicated on the 1961 Summerfield Ohio Quadrangle Topographic Map.



X:\W-2070 Summerfield-Berne 138k\GIS\mxd\2070 Summerfield\_Berne\_HA.mxd L.S. (11/23/2016 - office) - LP:6/7/2016 12:39:06 PM - LExported:11/23/2016 10:47:59 AM



Figure 41. Aerial map indicating the location of S-1 with the project and study area.



X:\W-2070 Summerfield-Berne 138k\GIS\mxd\2070 Summerfield\_Berne\_HA.mxd LS:(11/23/2016 - office) - LP:67/2016 12:39:06 PM - LExported:11/23/2016 10:45:32 AM

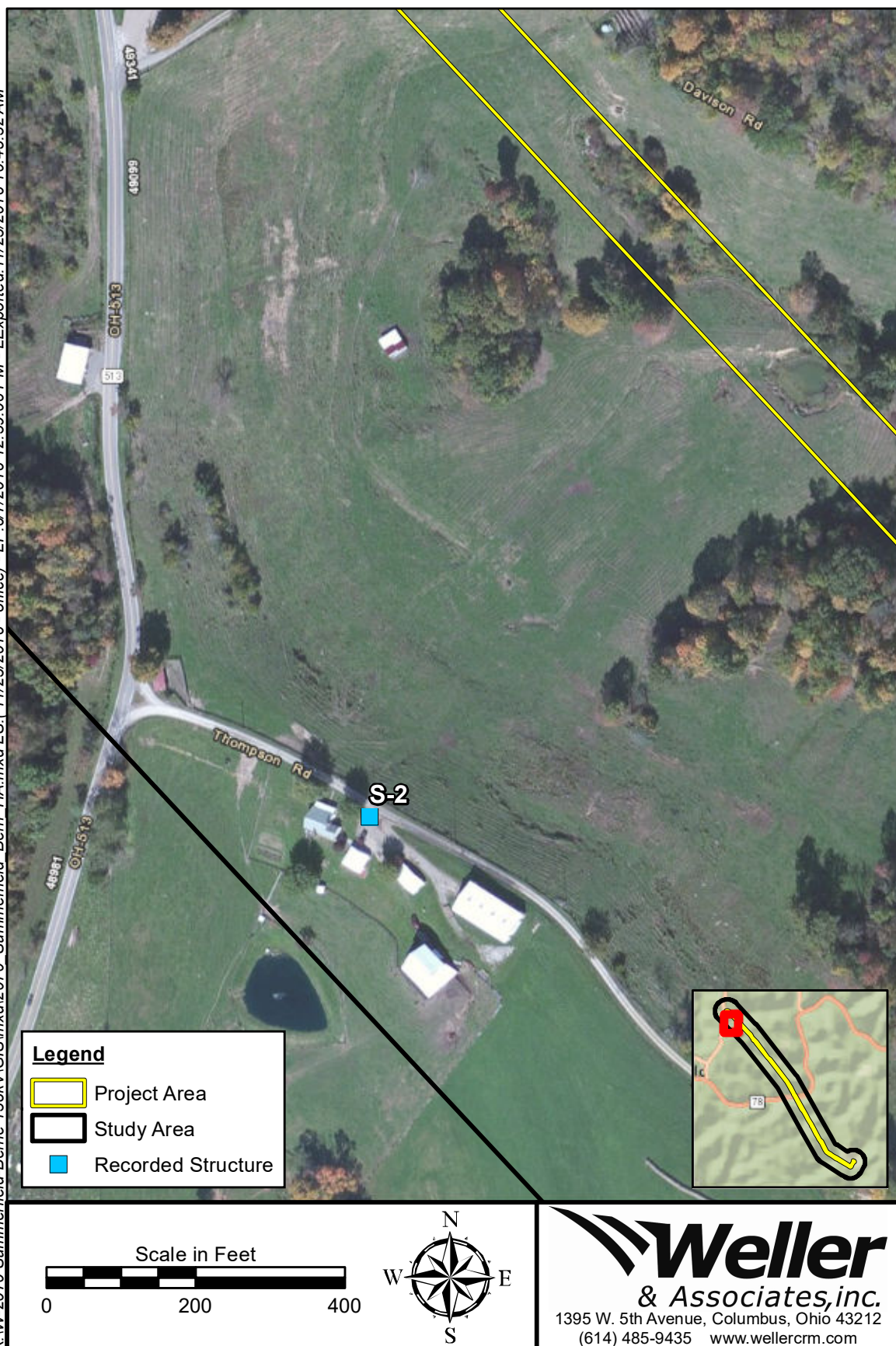


Figure 42. Aerial map indicating the location of S-2 with the project and study area.



X:\W-2070 Summerfield-Berne 138k\GIS\mxd\2070 Summerfield\_Berne\_HA.mxd LS:(11/23/2016 - office) - LP:6/7/2016 12:39:06 PM - LExported:11/23/2016 10:44:21 AM



Figure 43. Aerial map indicating the location of S-3 with the project and study area.



**This foregoing document was electronically filed with the Public Utilities**

**Commission of Ohio Docketing Information System on**

**1/5/2018 10:14:42 AM**

**in**

**Case No(s). 17-2505-EL-BLN**

Summary: Letter of Notification electronically filed by Ms. Christen M. Blend on behalf of AEP Ohio Transmission Power Company, Inc.