



Kentucky | West Virginia | Ohio
Indiana | Louisiana | Tennessee | Virginia

**REVISED CULTURAL RESOURCES RECORDS REVIEW
FOR THE BUCKEYE WIND PROJECT
CHAMPAIGN COUNTY, OHIO
OPSB CASE NOS. 08-0666-ELBGN AND 12-0160-EL-BGN**

CRA Project No. W17E003
Contract Publication Series 17-359

by

Elizabeth G. Heavrin, Flora Church, James H. Kompanek, and Stevan C. Pullins

Prepared for

Everpower Wind Holdings, Inc.
1251 Waterfront Place
3rd Floor
Pittsburgh, Pennsylvania 15222

**REVISED CULTURAL RESOURCES RECORDS REVIEW
FOR THE BUCKEYE WIND PROJECT,
CHAMPAIGN COUNTY, OHIO
OPSB CASE NOS. 08-0666-EL-BGN AND 12-0160-EL-BGN**

By

Elizabeth G. Heavrin, Flora Church, James H. Kompanek, and Stevan C. Pullins

Prepared for

Everpower Wind Holdings, Inc.
1251 Waterfront Pl
3rd Floor
Pittsburgh, Pennsylvania 15222
412-578-9757

Prepared by

Cultural Resource Analysts, Inc.
3556 Teays Valley Road, Suite 3
Hurricane, West Virginia 25526
Phone: (304) 562-7233
Fax: (304) 562-7235
Website: www.crai-ky.com
manslinger@crai-ky.com
CRA Project No.: W17E003



Stevan C. Pullins, RPA
Principal Investigator

November 7, 2017

Lead State Agency: Ohio Power Siting Board

TABLE OF CONTENTS

LIST OF FIGURES.....	I
LIST OF TABLES.....	I
I. INTRODUCTION.....	1
II. RECORDS REVIEW AND IMPACT ASSESSMENT	2
III. SUMMARY AND CONCLUSIONS.....	13
REFERENCES CITED.....	36
APPENDIX A. OHIO STATE HISTORIC PRESERVATION OFFICE CORRESPONDENCE	A-1
APPENDIX B. BUCKEYE AND BUCKEYE II PROGRAMMATIC AGREEMENT	B-1

LIST OF FIGURES

Figure 1. Map Champaign County, Ohio showing the Buckeye Wind Project location.	1
Figure 2. Study Area and Direct APE for the Buckeye Wind Project.	3
Figure 3. Registered Landmarks, Historic Places, and Cemeteries within 5.0 mi (8.0 km) of the Direct APE	Back Jacket
Figure 4. Registered Archaeological Sites within 5.0 mi (8.0 km) of the Direct APE.....	Back Jacket
Figure 5. Direct APE for the Buckeye Wind Project on the Mills Atlas (2006 [1914])......	7
Figure 6. Direct APE for the Buckeye Wind Project on the 1916 Mechanicsburg OH USGS 15-minute quadrangle map	11
Figure 7. Topographic maps showing the original 2010 Buckeye I, the 2012 Buckeye II, and the current 2017 Buckeye Wind Project.....	Back Jacket

LIST OF TABLES

Table 1. National Register Listings, DOE, and Boundaries within 5.0 miles (8.0 km) of the Direct APE.....	15
Table 2. Ohio Historic Inventory Sites within 5.0 miles (8.0 km) of Direct APE.....	16
Table 3. Ohio Archaeological Inventory Sites within 5.0 miles (8.0 km) of Direct APE.	30
Table 4. Ohio Genealogical Society Cemeteries within 5.0 miles (8.0 km) of the Direct APE.	35

I. INTRODUCTION

This records review, conducted by Cultural Resource Analysts, Inc. (CRA), updates previous records reviews for the approved Ohio Power Siting Board (OPSB) certificate for the original Buckeye Wind Project (OPSB Case No. 08-0666-EL-BGN; referred to as Buckeye I Project) by Tonetti and Terpstra (2009) and for the Buckeye II Wind Farm (OPSB Case No. 12-0160-EL-BGN; referred to as Buckeye II Project) by Heavrin et al. (2012).

Buckeye Wind, LLC (Applicant) will submit the amendment (under the name "Buckeye Wind Project") that will amend both Case No. 08-0666-EL-BGN and Case No. 12-0160-EL-BGN into one certificate. The updated records review presented here is associated with the entire Buckeye Wind Project, and updates all previous records reviews. The potential direct and indirect impacts to the preservation and continued meaningfulness of identified properties, including but not limited to potential direct effects to archaeological sites and potential visual effects to aboveground historic properties, is presented in this report.

While the OPSB rules have been rescinded and relocated in a slightly different format within the Ohio Code, the OPSB has grandfathered the Buckeye Wind Project under the old rules that were in effect prior to December 11, 2015 (4906-17-08[D] – Social and ecological data, cultural impact).

CRA has previously prepared work plans (Heavrin 2011; Pullins et al. 2012) that were approved by the U.S Fish and Wildlife Service (USFWS) and the OPSB (Appendix A). An architectural survey based this approved work plan has been conducted (Heavrin 2013). The signed Programmatic Agreement (PA) arising from previous cultural resource studies for OPSB Case Nos. 08-0666-EL-BGN and 12-0160-EL-BGN is addressed in this document, and the PA is included as Appendix B. The PA also addresses the need for a Phase I archaeological survey to be conducted for previously unsurveyed portions of the consolidated Buckeye Wind Project.

Definitions

The direct Area of Potential Effects (APE) is defined as the project footprint or area of permanent and temporary ground disturbance associated with the Buckeye Wind Project (Figure 2). The Study Area or indirect visual APE is defined as the area within a 5.0 mi (8.0 km) radius of the direct APE (Figure 2).

Project Location and Description

The Applicant is proposing to develop, construct, own, and operate a wind-powered electric generation facility, which will consist of up to 55 wind turbine generators and associated ancillary features such as gravel access roads, electric interconnect, and an interconnection substation (the turbines and all ancillary features are referred to as the "Facility"). Each wind turbine generator will have a nameplate capacity rating of up to 4.0 MW (depending on the final turbine model selected), and the total generating capacity of the Facility is not expected to exceed 100 MW. The energy generated at the Facility will connect to the existing Urbana-Mechanicsburg-Darby 138kV Transmission Line owned by PJM Interconnection.

The proposed wind turbine sites for the Buckeye Wind Project have a ground-disturbing area comprised of a 200 ft radius around a central point, or about 2.9 acres. Turbine height will not exceed 493 ft. Temporary easements for



Figure 1. Map Champaign County, Ohio showing the Buckeye Wind Project location.

the proposed access roads will be approximately 55 ft in width, and the easements for the proposed buried interconnects will be approximately 15 ft in width. All collection is expected to be buried underground.

Overall, the direct APE for the Buckeye Wind Project encompasses approximately 316.00 acres, based on shapefile information provided by the Applicant on August 12, 2017 and on November 7, 2017. The Study Area for the Buckeye Wind Project development encompasses approximately 137,651.50 acres in the eastern portion of Champaign County and the townships of Salem, Wayne, Rush, Union, and Goshen (see Figure 2).

Regulatory and Project Review Authority

This records review is designed to satisfy the grandfathered requirements of Ohio Administrative Code Chapter 4906-17-08(D) for the OPSB.

State Authority

Ohio Administrative Code Chapter 4906-17-08(D) requires the OPSB to take cultural resources into consideration as part of the application filing requirements for wind-powered electric generation facilities. The Buckeye Wind Project will be regulated by the OPSB under Chapter 4906 of the Ohio Revised Code and Chapters 4906-1 to 4906-8 of the Ohio Administrative Code. Chapter 4906-17-08(D) directs the identification of historic landmarks located within five miles of the proposed facility.

II. RECORDS REVIEW AND IMPACT ASSESSMENT

The following resources were examined for the purposes of this records review: Ohio Historic Preservation Office (OHPO) online-GIS records for National Register of Historic Places (NRHP)-listed properties, NRHP Determination of Eligibility (DOE) properties, NRHP boundaries, the Ohio Historic Inventory (OHI),

the Ohio Archaeological Inventory (OAI), Ohio Genealogical Society (OGS) cemeteries, and previous Phase I, II, and III cultural resources surveys conducted within the Study Area. Mills' (1914) Archaeological Atlas of Ohio was examined for recorded archaeological sites and Indian trails, and historic county atlases and historic USGS 15-minute and 7.5-minute topographic quadrangles were reviewed.

Previous Cultural Resource Surveys

A total of 16 previous Phase I cultural resource surveys and two previous Phase II archaeological evaluations have been completed within 5.0 mi (8.0 km) of the direct APE, including 15 in Champaign County and one in Union County. Two of these were Phase I cultural resource surveys completed for the Ohio Department of Transportation regarding development of US 68 (Mustain and Young 1997a, 1997b). Watkins' (2004) survey was also completed for the Ohio Department of Transportation regarding improvements to SR 56. The Weller von Molsdorff (1997) and Breetzke (2006) surveys were for single cell towers; Addington and Clarke (1984) for Urbana City Park, Riordan and Smolek (1977) for two interceptor routes for an Urbana facility plan; and Riordan (1987) for a bikeway. Riordan and Villars (1984) conducted a survey for a storm sewer route, and Baker and Kime (1981) conducted a survey as part of a flood prevention project for Triad High School. Beamer (1992) conducted a survey in association with the Castle Ridge subdivision in North Lewisburg, while Jackson et al. (1992) surveyed the proposed Edgewood Avenue widening and extension in Urbana. Mustain (2007) also conducted a survey for the Grimes Field Airport Runway project in Urbana. Frye and Aument (1988) conducted both Phase I and Phase II cultural resource surveys for a proposed pole yard in Urbana.

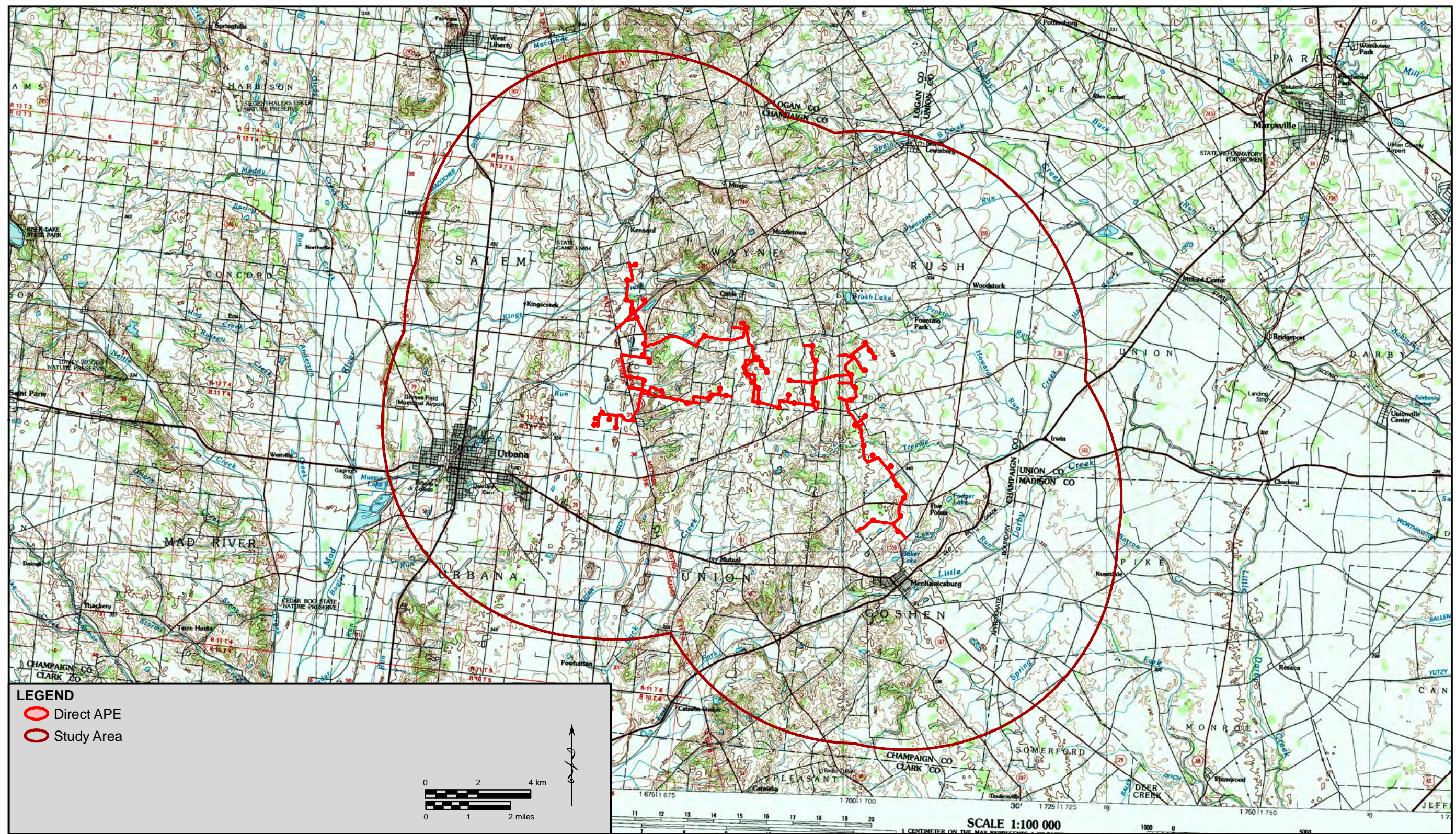


Figure 2. Study Area and Direct APE for the Buckeye Wind Project.

The most recent cultural resource survey was conducted by CRA in 2010–2011 in association with the Buckeye Wind Project OPSB Docket 08-666-EL-BGN in Champaign County for Buckeye Wind, LLC (Heavrin et al. 2011; Nelson and Meece 2011). In 2013, CRA prepared an addendum to the architectural survey report to address the Buckeye Wind Project as it was proposed at that time (Heavrin 2013).

The only previously conducted survey in the Study Area outside of Champaign County was for a bridge replacement in Union County conducted by Derick (2012).

In addition to the Phase II evaluation by Frye and Aument (1988) listed above, Walter and Whitman (1999) conducted Phase II archaeological evaluations of 21 sites in association with the US 68 relocation project mentioned previously.

Requirements of the Ohio Administrative Code Chapter 4906-17-08 (D) Cultural Impact

(1) The applicant shall indicate, on the 1:24,000 map referenced in paragraph (C)(1)(a) of this rule, any registered landmarks of historic, religious, archaeological, scenic, natural, or other cultural significance within five miles of the proposed facility.

National Register of Historic Places

The records review of the OHPO online GIS mapping revealed that 32 NRHP-listed properties and two National Register DOE sites have been recorded within 5.0 mi (8.0 km) of the direct APE (Table 1 and Figure 3). In addition, NRHP boundaries are provided for four NRHP properties, including three historic districts and one large farm. The Scioto Street Historic District and Monument Square Historic District in Urbana and the Mechanicsburg Commercial Historic District in Mechanicsburg contain particularly rich concentrations of historic

resources. None of these previously identified properties is within the direct APE.

Ohio Historic Inventory Resources

The review indicated that 795 OHI resources have been previously recorded within 5.0 mi (8.0 km) of the direct APE, including 4 OHI resources surveyed during the 2010 Buckeye I Project survey (Nelson and Meece 2011) (Table 2 and Figure 3). Slightly more than three-quarters of these resources consist of single dwellings and other residential complexes, while another 10 percent are various commercial properties. The remaining resources consist of low frequencies of barns, mills, schools, libraries, colleges, cemetery structures, a theatre, industrial, transportation, rail, other, and unknown.

All but six of these OHI properties are located in Champaign County, and most are found in the towns of Urbana and Mechanicsburg and along the US 68 corridor. None of the OHI properties are located within the direct APE. Prior to CRA's 2010–2011 study of the Buckeye I Project, the rural areas of Champaign County were not subject to a systematic architectural survey. While the 2010 survey identified hundreds of historic architectural resources located throughout the eastern half of Champaign County, the vast majority of these resources were not recorded in the OHI, per agreement with OHPO, so they are not included in the records review results. However, it should be noted the previous survey identified 1,475 individual properties located in the rural areas and crossroads communities of the Study Area for the 2010 Buckeye I Project layout, of which 745 are located in the Study Area for the Buckeye Wind Project. Based on the survey results, it was determined that historic farmsteads and farmhouses, one-room schoolhouses, churches, cemeteries, and crossroads communities are character-defining property types that contribute to one's appreciation of the area as a traditional farming community (Heavrin et al. 2011).

Ohio Archaeological Inventory Resources

The review identified 308 previously recorded archaeological sites within 5.0 mi (8.0 km) of the direct APE (Table 3 and Figure 4), including 10 archaeological sites and four isolated finds inventoried during the Buckeye I Project (Nelson and Meece 2011). One site is located in Logan County, one is located in Union County, and the rest are located in Champaign County. The sites consist of 56 historic-era sites (type and function unknown), 239 prehistoric sites, 11 sites with both historic and prehistoric components, and 2 sites of unknown temporal association. For the prehistoric sites, cultural components that have been recorded include 2 sites with Paleoindian components, 6 with Early Archaic, 2 with Middle Archaic, 25 with Late Archaic, 4 with Early Woodland, 4 with Middle Woodland, 3 with Late Woodland, and 3 with Late Prehistoric. Three sites have unknown Archaic components, and seven have unknown Woodland components. A total of 201 sites are recorded as having only unknown prehistoric components. Except for six burials/cemeteries, six mounds and mound groups, four camps, and five habitation, the rest of the archaeological sites are of unknown function (Table 3).

One site within the Study Area, originally identified during the 2010 Buckeye I Project archaeological survey (Nelson and Meece 2011), has been recommended as potentially eligible for the NRHP. Site 33CH415 is a historic-period site that includes a possible root cellar or refuse pit containing a wide variety of artifact types, including domestic, architectural, and faunal. This site is now not located within the direct APE of the Buckeye Wind Project.

Four previously identified sites (33CH408, 33CH409, 33CH410, and 33CH421) and one isolated find (a prehistoric projectile point) appear to be within the direct APE for the Buckeye Wind Project (Figure 4). These sites and isolated finds were identified during the archaeological survey associated with the 2010 Buckeye I Project (Nelson and Meece 2011), and have been previously recommended as not

eligible for the NRHP, with no further work required.

Ohio Genealogical Society Cemeteries

A total of 46 cemeteries have been identified by the Ohio Genealogical Society within 5.0 mi (8.0 km) of the direct APE, including two in Madison County and 44 in Champaign County (Table 4 and Figure 3). None of these previously identified cemeteries is located within the direct APE.

Mills' (1914) Archaeological Atlas of Ohio

A review of Mills' 1914 Archaeological Atlas indicates that three prehistoric mounds, three earthworks, three burials, one prehistoric cemetery, two circular enclosures, and one earthen enclosure were recorded within 5.0 mi (8.0 km) of the direct APE in Champaign County. The mounds are all located in Urbana Township; Union Township contains one of the burials in the extreme northwest portion of the township and the prehistoric cemetery and earthen enclosure southwest of Catawba Station. The two circular enclosures were located east and southeast of Mechanicsburg, and one burial was reported east of Middletown. No archaeological sites were recorded within 5.0 mi (8.0 km) of the direct APE in Union, Madison, or Clark Counties.

Mills (1914:vii) indicates that a trail (#3), which connected the forks of the Muskingum River to the Scioto, then west and north to the Miami River and north to the Maumee River, traversed a portion of the area within 5.0 mi (8.0 km) of the direct APE.

None of the archaeological remains noted in Mills' atlas are located within the direct APE for the Buckeye Wind Project (Figure 5).

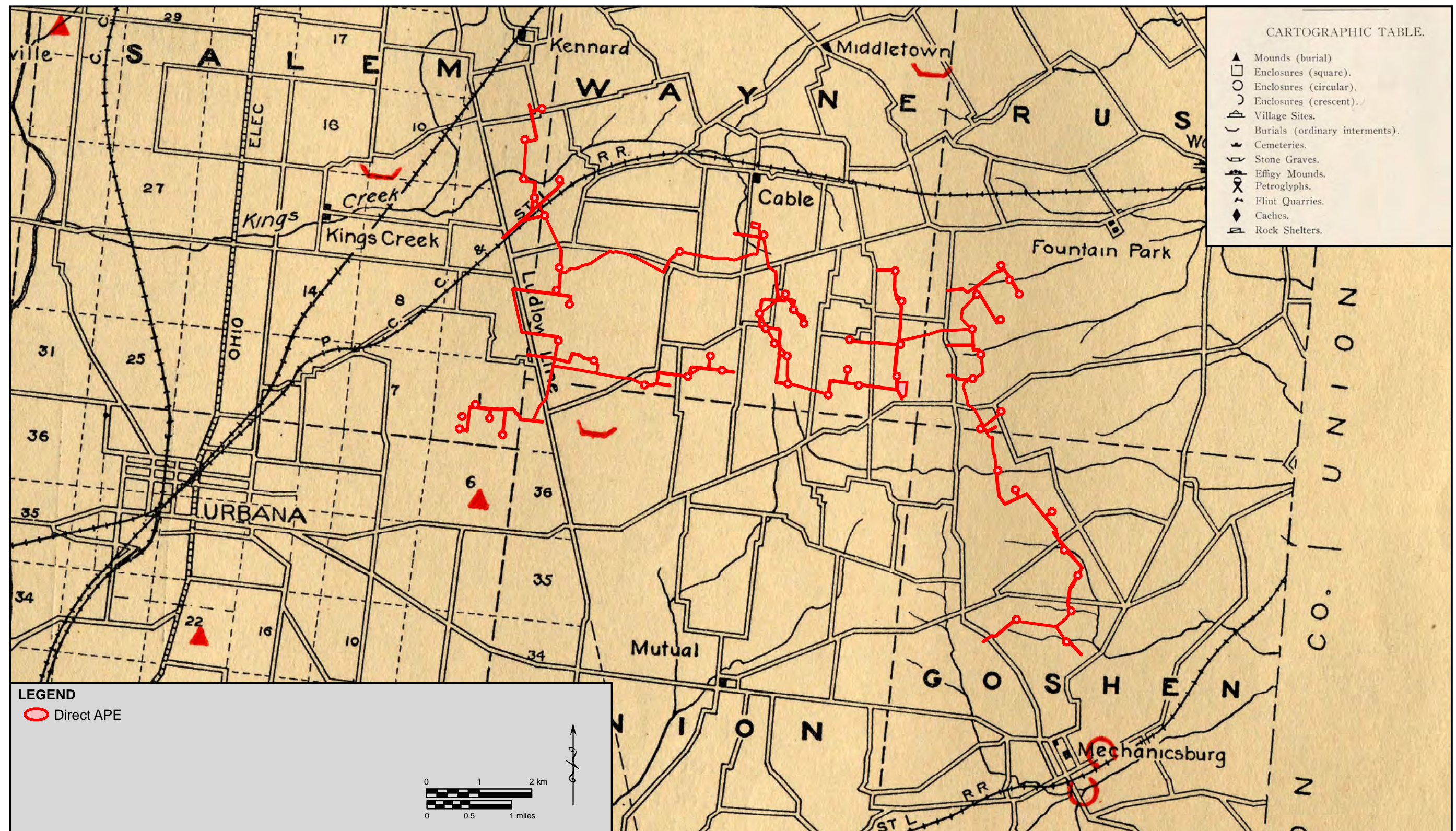


Figure 5. Direct APE for the Buckeye Wind Project on the Mills Atlas (2016 [1914]).

Historic Atlases and Historic USGS 15-minute Topographic Quadrangles

Historic atlases for Clark County (Pleasant and Moorefield Townships), Champaign County (Urbana and Mad River Townships), Union County (Union Township), and Madison County (Somerford and Pike Townships) were examined to determine whether historic structures had been recorded within 5.0 mi (8.0 km) of the direct APE. The following resources were reviewed: Starr et al. (1874) and Everts (1875) for Champaign and Clark Counties; Kizer (1859), Rerick Brothers (1894), and Lake (1870) for Clark County; Caldwell (1875) for Madison County; and Mowry (1877) and Marysville Map Co. (1908) for Union County. USGS 15-minute topographic quadrangles which were reviewed included South Charleston, OH 1907, London, OH 1907, Mechanicsburg, OH 1916 and 1944, St. Paris, OH 1916 and 1944, and Springfield, OH 1906.

According to these historical atlases, structures were present within 5.0 mi (8.0 km) of the direct APE as early as 1859 and continuing through 1944. The scale of mapping makes it difficult to determine whether something is actually within 5.0 mi (8.0 km) of the direct APE along its boundaries.

No structures are indicated within the direct APE on the 1916 Mechanicsburg OH USGS 15-minute quadrangle map. However, two structures are shown adjacent to turbine locations, two are shown adjacent to access roads, and one is shown adjacent to a buried collection line (Figure 6). Given error consideration associated with plotting shapefiles on older topographic maps, these mapped resources may or may not be within the direct APE.

(2) The applicant shall estimate the impact of the proposed facility on the preservation and continued meaningfulness of these landmarks and describe plans to mitigate any adverse impact.

Aboveground Resources. In evaluating the impact of the proposed Buckeye Wind Project

facility on the preservation and continued meaningfulness of known historic landmarks, direct, indirect, and reasonably foreseeable future impacts to aboveground historic resources were considered. Given the nature of the proposed project, indirect visual effects are most likely, as the introduction of dozens of large wind turbines to the area may alter people's perceptions of the traditional rural character of the landscape and alter the settings of character-defining historic resources. Due to established setback requirements for turbine locations, direct effects to aboveground resources will not occur.

In 2010–2011, CRA conducted an architectural survey for the 2010 Buckeye I Project layout, including documentation of historic architectural resources located within a 5 mi viewshed of the 52 turbine locations established at that time (Heavrin et al. 2011). In 2013, in accordance with a work plan established in consultation with the USFWS, OPSB, and Ohio SHPO, CRA conducted additional field reconnaissance and completed an addendum report to address 55 additional turbine locations that composed the Buckeye II Project as proposed at that time (Heavrin 2013). Based on the survey results, it was determined that historic farmsteads and farmhouses, one-room schoolhouses, churches, cemeteries, and crossroads communities are character-defining property types that contribute to one's appreciation of the area as a traditional farming community. The previous studies for the Buckeye I and II Projects concluded that the proposed wind turbines, sited in the county's agricultural fields, represent a new land use that allows local farmers to continue to cultivate their fields while also bringing in additional income. By providing economic support to family farms, the wind farm will encourage the continuation of an agricultural way of life in Champaign County and in many cases may contribute to the preservation of character-defining historic resources reflecting this rural heritage. At the same time, the number and size of the proposed turbines could affect the perception of the traditional rural historic landscape, changing important qualities of the setting in which many of the character-defining historic property types are located. Based on the nature of the proposed

project, avoidance or minimization of these indirect effects is impractical. Consequently, creative mitigation measures were proposed to promote the continued preservation and meaningfulness of the survey area's rural history. The findings of the archival research, field survey, and public input were taken into consideration when formulating the recommended mitigation measures.

The mitigation measures were formalized in May 2013 in a Programmatic Agreement (PA) among the USFWS, Ohio SHPO, and Buckeye Wind, LLC, entitled *Construction of the Buckeye and Buckeye II Wind Project Wind Power Projects to be located in Champaign County, Ohio and Mitigation for Take of Indiana Bats to be Implemented in Ohio* (Appendix B). According to the terms of the PA, the Applicant will hire and pay a professionally qualified historian or architectural historian to complete two mitigation projects, as approved by USFWS and Ohio SHPO: a Multiple Property Listing to the NRHP for Champaign County's one-room schoolhouses, an important property type identified by the survey, and a Teaching with Historic Places Lesson Plan about Champaign County's role in the Underground Railroad, an important historical theme identified by the consulting parties. The PA stipulates that work on the mitigation projects will begin no later than the first delivery of a turbine generator to the project area, with drafts provided to Ohio SHPO within 12 months of this date.

While some turbine locations for the Buckeye Wind Project have been removed since the 2010–2011 and 2013 survey, the locations of the remaining turbines have not changed, and entirety of the 5 mi study area for the current the Buckeye Wind Project is encompassed by the previously investigated study areas, save for some very small areas along the edge of the study area (Figure 7). The overall nature of the proposed project has not changed, but the scale has been reduced. While the conclusions of the previous studies regarding the proposed project's impacts to aboveground historic resources remain applicable, the reduced scale of the project may make it appropriate to revisit the terms agreed to in the PA.

Belowground Resources. No indirect visual impacts are anticipated for belowground archaeological resources within the Study Area. As noted in part (1) above, four previously identified archaeological sites and one isolated find within the Study Area appear to be located within the direct APE. All of these sites have been previously recommended as not eligible for the NRHP (Nelson and Meece 2011).

Most of the updated direct APE included in this records review has not been previously surveyed for cultural resources. CRA anticipates modifying the previously approved Work Plan to include the modified Project layout. It is expected that this will be followed by a Phase I archaeological survey within the direct APE shown on Figures 2 and 4 to identify cultural resources within the direct APE, including re-identification of those previously identified resources within the direct APE, and to assess the effects of the proposed project on these cultural resources. Cultural resources identified within the direct APE during the Phase I survey will be documented, and if recommended as potentially eligible for the NRHP, avoided. If avoidance of site(s) potentially eligible for the NRHP is not possible, a Phase II investigation will be recommended to assess the significance of cultural resources within the direct APE. The results of the Phase I archaeological survey will be presented in a complete report of investigations to be provided at a future date following completion of the fieldwork.

(3) Landmarks to be considered for purposes of paragraphs (D)(1) and (D)(2) of this rule are those districts, sites, buildings, structures, and objects which are recognized by, registered with, or identified as eligible for registration by the national registry of natural landmarks, the Ohio historical society, or the Ohio department of natural resources.

These are the resources considered in Parts (1) and (2) above.

(4) The applicant shall indicate, on the 1:24,000 map referenced in paragraph (C)(1)(a) of this rule, existing and formally adopted land and water recreation areas within five miles of the proposed facility.

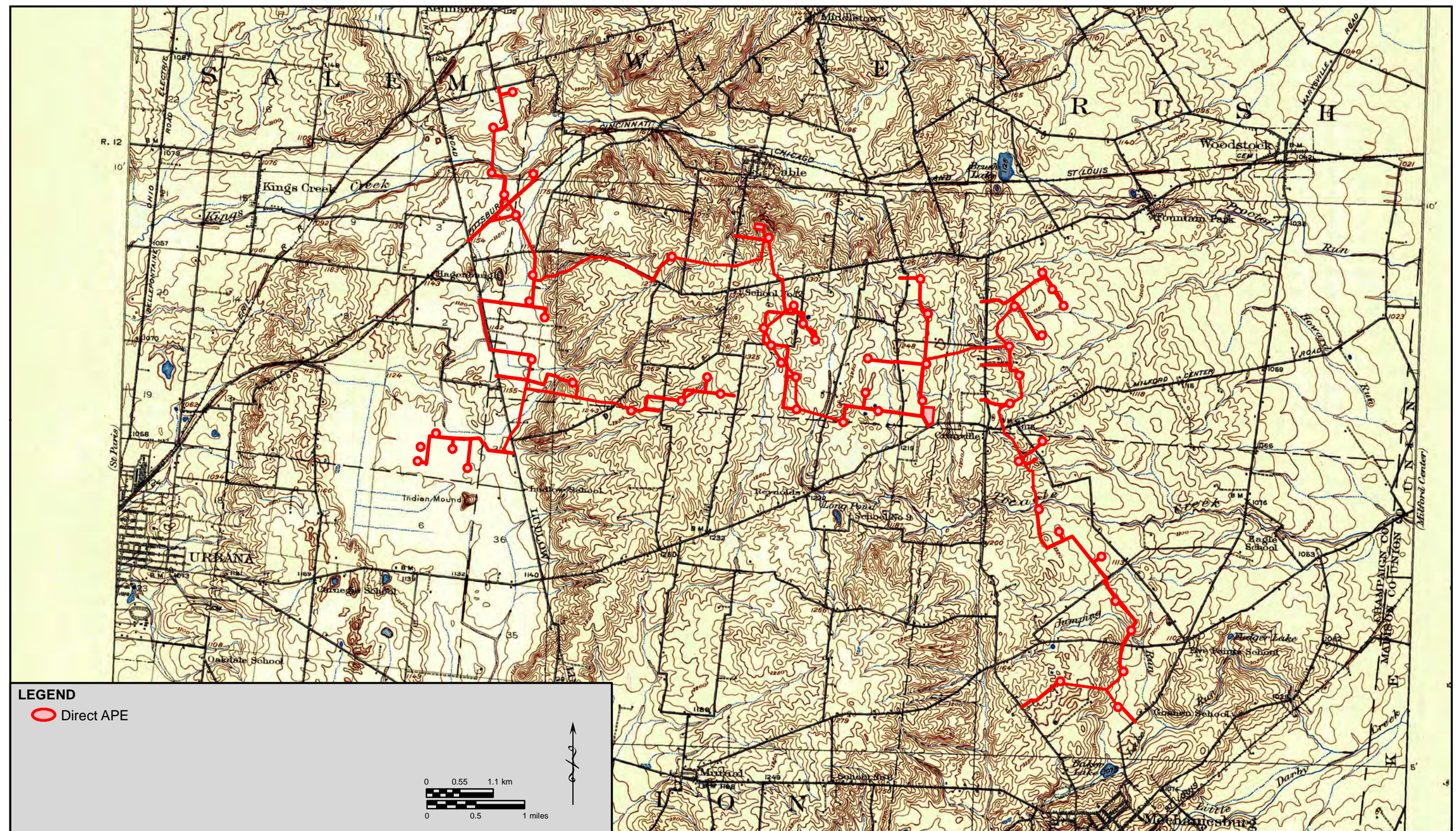


Figure 6. Direct APE for the Buckeye Wind Project on the 1916 Mechanicsburg, OH USGS 15-minute quadrangle map.

(5) The applicant shall describe the identified recreational areas within one mile of the proposed project area in terms of their proximity to population centers, uniqueness, topography, vegetation, hydrology, and wildlife; estimate the impact of the proposed facility on the identified recreational areas; and describe plans to avoid, minimize, or mitigate any adverse impact.

Identifying and evaluating the impact of the facility on recreation areas is not within CRA's scope of work for this project.

(6) The applicant shall describe measures that will be taken to minimize any adverse visual impacts created by the facility, including but not limited to, project area location, lighting, and facility coloration. In no event shall these measures conflict with relevant safety requirements.

As described in Section (2), the proposed Buckeye Wind Project development will result in a visual impact to the Study Area that could affect one's understanding of the area's history as a traditional farming community. Based on the results of previous studies, the Applicant has entered a PA with the USFWS and Ohio SHPO to address these impacts to aboveground historic resources. The conclusions of the previous studies remain appropriate for the Buckeye Wind Project as currently proposed.

As required by Section B(2) of the PA (Appendix B) and in order to more fully evaluate the potential impacts of the Buckeye Wind Project and address each of the subsections (a)-(f) in section 4, the applicant will initiate a Phase I archaeological survey to assess the direct effects of the proposed project. A report of investigations for the Phase I survey will be provided at a future date. No specific mitigation measures for direct effects are proposed at this time.

III. SUMMARY AND CONCLUSIONS

CRA updated previous cultural resource records reviews for the proposed Buckeye

Wind Project in Champaign County, Ohio. Previous records reviews are updated in this document to reflect changes in the project APE and SHPO records since the date of the original review. This updated review indicates that 32 National Register sites, two National Register DOE sites, 795 structures, 308 previously recorded archaeological sites, and 46 cemeteries have been identified in OHPO databases within 5.0 mi (8.0 km) of the direct APE.

A total of 795 OHI resources have been previously recorded within 5.0 mi (8.0 km) of the direct APE, including four OHI resources surveyed during the Buckeye I project (see Table 2). Slightly more than three-quarters of these resources consist of single dwellings and other residential complexes, while another 10 percent are various commercial properties. The remaining resources consist of low frequencies of barns, mills, schools, libraries, colleges, cemetery structures, a theatre, industrial, transportation, rail, other, and unknown. All but six of these OHI properties are located in Champaign County, and most are found in the towns of Urbana and Mechanicsburg, and along the US 68 corridor. None of these properties is located within the direct APE.

A total of 46 previously identified cemeteries are located within the Study Area, but none is within the direct APE of the project.

A total of 308 archaeological sites have been previously identified within 5.0 mi (8.0 km) of the direct APE (see Table 3), including 10 OAI sites and four isolated finds identified during the Buckeye I project survey (Nelson and Meece 2011). The sites consist of 56 historic-era sites (type and function unknown), 239 prehistoric sites, 11 sites with both historic and prehistoric components, and 2 sites of unknown temporal association.

It appears likely that the proposed Buckeye Wind Project development will result in a visual impact to the Study Area that could affect one's understanding of the area's history as a traditional farming community. Based on the results of previous studies, the Applicant has entered a PA with the USFWS and Ohio SHPO to address impacts to aboveground historic resources. The conclusions of the previous

studies remain appropriate for the Buckeye Wind Project as currently proposed.

With the exception of one archaeological site previously recommended as not eligible for the NRHP (Nelson and Meece 2011), the proposed project is not expected to directly impact known cultural resources within the study area. However, the majority of the direct APE for the most recent changes to Buckeye Wind Project has not been systematically surveyed for archaeological resources.

Based on the results of previous studies, the PA entered by the Applicant with the USFWS and Ohio SHPO also addressed impacts to archaeological resources. As described in Section B(2) of the PA, the Applicant will initiate a Phase I archaeological survey to assess the direct effects of the proposed project within the direct APE prior to construction as shown on Figures 2 and 4. A complete report of investigations will be provided at a future date.

Table 1. National Register Listings, DOE, and Boundaries within 5.0 miles (8.0 km) of the Direct APE.

Ref#	Resource Name	City	County	Zone	Easting	Northing
<i>National Register Listings</i>						
74001407	Potter, Carl, Mound	Mechanicsburg	Champaign	17	278098	4435040
74001409	Ward, John Q. A., House	Urbana	Champaign	17	266970	4442580
76002265	Nutwood Place	Urbana	Champaign	17	265480	4445410
79001972	Elmwood Place	Irwin	Union	17	288305	4443742
80002952	Urbana College, Historic Buildings of	Urbana	Champaign	17	264527	4442539
82003550	Mosgrove, Dr. Adam, House	Urbana	Champaign	17	265270	4443190
84002908	Scioto Street Historic District	Urbana	Champaign	17	265990	4443150
84002909	Urbana Monument Square Historic District	Urbana	Champaign	17	265408	4443244
85001875	Baker, Maj. John C., House	Mechanicsburg	Champaign	17	281720	4439040
85001876	Barr House	Mechanicsburg	Champaign	17	282310	4438800
85001877	Burnham, Henry, House	Mechanicsburg	Champaign	17	281780	4439000
85001878	Church Of Our Savior	Mechanicsburg	Champaign	17	282180	4438550
85001879	Clark, Dr., House	Mechanicsburg	Champaign	17	281960	4438700
85001880	Culbertson, William, House	Mechanicsburg	Champaign	17	282060	4438900
85001881	Demand-Gest House	Mechanicsburg	Champaign	17	281920	4438760
85001882	Hamer's General Store	Mechanicsburg	Champaign	17	282240	4438440
85001883	Hunter, Norvall, Farm	Mechanicsburg	Champaign	17	282254	4438181
85001884	Kimball House	Mechanicsburg	Champaign	17	281840	4438860
85001885	Lowler's Tavern	Mechanicsburg	Champaign	17	281960	4438700
85001886	Magruder Building	Mechanicsburg	Champaign	17	282100	4438600
85001887	Masonic Temple	Mechanicsburg	Champaign	17	282000	4438740
85001888	Mechanicsburg Baptist Church	Mechanicsburg	Champaign	17	281860	4438580
85001889	Ninchelser, Dr., House	Mechanicsburg	Champaign	17	281960	4438860
85001890	Rathburn, Levi, House (DELISTED)	Mechanicsburg	Champaign	17	282123	4438765
85001891	Second Baptist Church	Mechanicsburg	Champaign	17	282140	4438700
85001892	St Michael Catholic Church	Mechanicsburg	Champaign	17	281840	4438700
85001893	United Methodist Church	Mechanicsburg	Champaign	17	284940	4438800
85001894	Village Hobby Shop	Mechanicsburg	Champaign	17	282000	4438680
85001895	Mechanicsburg Commercial Historic District	Mechanicsburg	Champaign	17	282073	4438560
95000937	Richards--Sewall House	Urbana	Champaign	17	265100	4442700
95001329	Mt. Tabor Church Building, Cemetery and Hitching Lot	West Liberty	Champaign	17	270790	4456440
97000954	St Paul AME Church	Urbana	Champaign	17	265699	4443048
<i>DOE</i>						
996332		Urbana	Champaign	17	265246	4444244
1024581	CHP0018011	Urbana	Champaign	17	265193	4443314
<i>Boundaries</i>						
84002908	Scioto Street Historic District	Urbana	Champaign	-	-	-
84002909	Urbana Monument Square Historic District	Urbana	Champaign	-	-	-
85001883	Hunter, Norvall, Farm	Mechanicsburg	Champaign	-	-	-
85001895	Mechanicsburg Commercial Historic District	Mechanicsburg	Champaign	-	-	-

Table 2. Ohio Historic Inventory Sites within 5.0 miles (8.0 km) of Direct APE.

OHI #	Present Name	Address	Placename	ArchStyle1	Date	Zone	Easting	Northing
CHP0000111	Champaign Co Courthouse	200 N Main St	Urbana	International	1956	17	265372	4443349
CHP0000211	Charles Stocksdale House Warnick House	320 Scioto St	Urbana	Georgian Revival	1920	17	265758	4443175
CHP0000311		502 Scioto St	Urbana	Colonial Revival	1895	17	266075	4443142
CHP0000511		536 Scioto St	Urbana	Italian Villa	1880	17	266160	4443130
CHP0000611		472 Scioto St	Urbana	Colonial Revival	1920	17	266031	4443147
CHP0000711		514 Scioto St	Urbana	Queen Anne	1885	17	266105	4443139
CHP0000811		596 Scioto St	Urbana	Queen Anne	1885	17	266348	4443110
CHP0000911		438 Scioto St	Urbana	Second Empire/Mansard	1865	17	265927	4443157
CHP0001011		332 Scioto St	Urbana	Not Discernable from OHI Form	1900	17	265777	4443173
CHP0001111		114 Scioto St	Urbana	Italianate	1890	17	265469	4443202
CHP0001211		120-122 Scioto St	Urbana	Greek Revival	1860	17	265491	4443200
CHP0001311		308-310 Scioto St	Urbana	Italianate	1845	17	265700	4443181
CHP0001411		208 Scioto St	Urbana	Greek Revival	1840	17	265557	4443197
CHP0001511		202 Scioto St	Urbana	Vernacular	1840	17	265547	4443197
CHP0001611		454 Scioto St	Urbana	Eastlake	1874	17	265974	4443153
CHP0001711		334 Scioto St	Urbana	Neo-Classical Revival	1900	17	265797	4443172
CHP0001811	Lemuel Weaver House	400 Scioto St	Urbana	Gothic Revival	1845	17	265838	4443198
CHP0001911		578 Scioto St	Urbana	Italianate	1890	17	266291	4443116
CHP0002011		224 Scioto St	Urbana	Italianate	1880	17	265599	4443194
CHP0002111		300 Scioto St	Urbana	Italianate	1870	17	265671	4443185
CHP0002211		539 Scioto St	Urbana	Chateausque	1900	17	266190	4443069
CHP0002311		563 Scioto St	Urbana	Greek Revival	1870	17	266264	4443060
CHP0002411		466 Scioto St	Urbana	Italianate	1880	17	266011	4443149
CHP0002511	Kenneth Ball House	558 Scioto St	Urbana	Colonial Revival	1890	17	266235	4443122
CHP0002611		570 Scioto St	Urbana	Colonial Revival	1900	17	266273	4443118
CHP0002711		584 Scioto St	Urbana	Italianate	1890	17	266310	4443114
CHP0002811		601 Scioto St	Urbana	Georgian Revival	1930	17	266381	4443023
CHP0002911		535 Scioto St	Urbana	Queen Anne	1880	17	266166	4443076
CHP0003011		347-355 Scioto St	Urbana	Gothic Revival	1870	17	265784	4443128
CHP0003111	First Church of Christ Science	343-345 Scioto St	Urbana	Vernacular	1890	17	265770	4443129
CHP0003211		335 Scioto St	Urbana	Italianate	1860	17	265757	4443131
CHP0003311		331 Scioto St	Urbana	Vernacular	1890	17	265744	4443132
CHP0003511		239 Scioto St	Urbana	Greek Revival	1850	17	265628	4443146
CHP0003611		301 Scioto St	Urbana	Italianate	1850	17	265666	4443141
CHP0003711		325 Scioto St	Urbana	Gothic Revival	1850	17	265731	4443134
CHP0003811		317 Scioto St	Urbana	Vernacular	1880	17	265709	4443136
CHP0003911	Easton Bldg Church of the Epiphany Episc	125 Scioto St	Urbana	Italianate	1895	17	265500	4443162
CHP0004011		307 Scioto St	Urbana	Queen Anne	1900	17	265681	4443139
CHP0004111		127 Scioto St	Urbana	Italianate	1897	17	265512	4443161
CHP0004211		230 Scioto St	Urbana	Gothic Revival	1850	17	265632	4443203
CHP0004311		225 Scioto St	Urbana	Colonial Revival	1895	17	265592	4443148
CHP0004411		123 Scioto St	Urbana	Vernacular	1860	17	265487	4443163
CHP0004511		115 Scioto St	Urbana	Italianate	1888	17	265459	4443166
CHP0004611	Hotel Sowles 1888	229 Scioto St	Urbana	Vernacular	1900	17	265604	4443148
CHP0004711		221 Scioto St	Urbana	Greek Revival	1850	17	265580	4443149
CHP0004811		213-219 Scioto St	Urbana	Greek Revival	1850	17	265568	4443150
CHP0004911		119 Scioto St	Urbana	Italianate	1860	17	265473	4443164
CHP0005011		724 S Main St	Urbana	Italianate	1875	17	265259	4442280
CHP0005111		20 Monument Sq	Urbana	Federal	1811	17	265368	4443160
CHP0005211		119 S Main St	Urbana	Italianate	1895	17	265399	4443111
CHP0005311		24-27 Monument Sq	Urbana	Second Empire/Mansard	1870	17	265336	4443178
CHP0005411	North Side Miami on Square	10-13 Monument Sq	Urbana	Italianate	1880	17	265427	4443177
CHP0005511		33 Monument Sq	Urbana	Italianate	1875	17	265350	4443220
CHP0005611		20-23 Monument Sq	Urbana	Vernacular	1850	17	265356	4443160
CHP0005711		31 Monument Sq	Urbana	Greek Revival	1865	17	265350	4443211
CHP0005811		445 S Main St	Urbana	Greek Revival	1840	17	265355	4442682
CHP0005911		425 S Main St	Urbana	Greek Revival	1845	17	265360	4442733
CHP0006011		413 S Main St	Urbana	Vernacular	1850	17	265367	4442776
CHP0006111		401 S Main St	Urbana	Queen Anne	1880	17	265370	4442804

OHI #	Present Name	Address	Placename	ArchStyle1	Date	Zone	Easting	Northing
CHP0006211	S Hill House	16-17 Monument Sq	Urbana	Vernacular	1890	17	265418	4443162
CHP0006311		333 S Main St	Urbana	Stick	1885	17	265371	4442838
CHP0006411		331 S Main St	Urbana	Eastlake	1885	17	265373	4442855
CHP0006511		319 S Main St	Urbana	Vernacular	1830	17	265375	4442871
CHP0006611		313 S Main St	Urbana	Eastlake	1880	17	265377	4442887
CHP0006711		115-117 S Main St	Urbana	Italianate	1895	17	265400	4443122
CHP0006811		517 S Main St	Urbana	Italianate	1870	17	265348	4442599
CHP0006911		527-531 S Main St	Urbana	Greek Revival	1845	17	265346	4442569
CHP0007011		533 S Main St	Urbana	Italianate	1870	17	265344	4442554
CHP0007111		605 S Main St	Urbana	Renaissance Revival	1870	17	265338	4442500
CHP0007211		559-569 S Main St	Urbana	Greek Revival	1840	17	265376	4442524
CHP0007311		609 S Main St	Urbana	Greek Revival	1850	17	265336	4442481
CHP0007411		619 S Main St	Urbana	Greek Revival	1850	17	265335	4442465
CHP0007511		705 S Main St	Urbana	Eastlake	1890	17	265321	4442328
CHP0007611		627 S Main St	Urbana	Tudor/English Revival	1890	17	265328	4442421
CHP0007711	Russell T Bundy Assoc	647 S Main St	Urbana	Queen Anne	1885	17	265323	4442359
CHP0007811		703 S Main St	Urbana	Queen Anne	1890	17	265321	4442343
CHP0007911		630 S Main St	Urbana	Queen Anne	1895	17	265276	4442424
CHP0008011		702 S Main St	Urbana	Italianate	1870	17	265266	4442341
CHP0008111		400 E Reynolds St	Urbana	Vernacular	1870	17	265846	4442778
CHP0008211		604 S Main St	Urbana	Greek Revival	1850	17	265283	4442499
CHP0008311		538 S Main St	Urbana	Greek Revival	1850	17	265291	4442550
CHP0008411		546 S Main St	Urbana	Queen Anne	1895	17	265289	4442534
CHP0008511		428 S Main St	Urbana	Queen Anne	1880	17	265313	4442724
CHP0008611		430 S Main St	Urbana	Queen Anne	1880	17	265312	4442711
CHP0008711		436 S Main St	Urbana	Queen Anne	1885	17	265310	4442697
CHP0008811		442 S Main St	Urbana	Queen Anne	1885	17	265309	4442683
CHP0008911		522 S Main St	Urbana	Italianate	1880	17	265293	4442583
CHP0009011		325 E Water St	Urbana	Greek Revival	1865	17	265705	4442866
CHP0009111	Colored School	237 E Court St	Urbana	Italianate	1875	17	265645	4443269
CHP0009211		311 E Court St	Urbana	Greek Revival	1860	17	265710	4443263
CHP0009311		219 E Court St	Urbana	Vernacular	1890	17	265595	4443274
CHP0009411		303 E Court St	Urbana	Vernacular	1880	17	265680	4443265
CHP0009511		127 E Court St	Urbana	Italianate	1885	17	265497	4443286
CHP0009611		111 E Court St	Urbana	Italianate	1875	17	265435	4443291
CHP0009711		126 E Court St	Urbana	Italianate	1890	17	265487	4443326
CHP0009811		115 E Court St	Urbana	Italianate	1880	17	265448	4443290
CHP0009911		112 E Court St	Urbana	Italianate	1881	17	265448	4443330
CHP0010011		116 E Court St	Urbana	Italianate	1880	17	265464	4443328
CHP0010111		343-345 E Court St	Urbana	Italianate	1885	17	265820	4443245
CHP0010211		203 E Court St	Urbana	Vernacular	1880	17	265556	4443278
CHP0010311		400 E Court St	Urbana	Italianate	1880	17	265863	4443287
CHP0010411		450 E Court St	Urbana	Italianate	1875	17	266011	4443270
CHP0010511		119 E Court St	Urbana	Greek Revival	1845	17	265462	4443290
CHP0010611	Eagles Lodge #979	429 E Court St	Urbana	Italianate	1865	17	265946	4443231
CHP0010711		464 E Court St	Urbana	Italianate	1870	17	266049	4443266
CHP0010811		510 E Church St	Urbana	Queen Anne	1895	17	266115	4443369
CHP0010911		520 E Church St	Urbana	Queen Anne	1885	17	266141	4443366
CHP0011011		502 E Church St	Urbana	Queen Anne	1885	17	266094	4443371
CHP0011111		213 E Church St	Urbana	Gothic Revival	1885	17	265594	4443387
CHP0011211		220-222 E Church St	Urbana	Vernacular	1900	17	265627	4443425
CHP0011311		230 E Church St	Urbana	Italianate	1880	17	265653	4443422
CHP0011411		323 E Church St	Urbana	Vernacular	1880	17	265772	4443367
CHP0011511		207 E Court St	Urbana	Italianate	1875	17	265568	4443277
CHP0011611		212 E Church St	Urbana	Vernacular	1900	17	265601	4443427
CHP0011711		346 E Church St	Urbana	Gothic Revival	1880	17	265822	4443402
CHP0011811		410 E Church St	Urbana	Vernacular	1874	17	265894	4443394
CHP0011911		223 E Church St	Urbana	Vernacular	1900	17	265620	4443385
CHP0012011		333 E Church St	Urbana	Queen Anne	1885	17	265790	4443365
CHP0012111	Eagles Lodge #979	407 E Church St	Urbana	Vernacular	1900	17	265880	4443355
CHP0012211		409 E Church St	Urbana	Bungalow	1900	17	265894	4443353
CHP0012311		341 E Church St	Urbana	Gothic Revival	1880	17	265808	4443363
CHP0012411		348 E Church St	Urbana	Bungalow	1900	17	265831	4443402
CHP0012511		438-440 E Church St	Urbana	Italianate	1880	17	265991	4443382
CHP0012611		319 E Court St	Urbana	Italianate	1875	17	265725	4443261
CHP0012711		446 E Church St	Urbana	Queen Anne	1895	17	266018	4443380
CHP0012811		452 E Church St	Urbana	Italianate	1880	17	266031	4443378
CHP0012911		462 E Church St	Urbana	Queen Anne	1890	17	266045	4443377

OHI #	Present Name	Address	Placename	ArchStyle1	Date	Zone	Easting	Northing
CHP0013011		412 E Church St	Urbana	Vernacular	1880	17	265905	4443393
CHP0013111		351 E Church St	Urbana	Gothic Revival	1880	17	265826	4443361
CHP0013211		445 E Church St	Urbana	Vernacular	1895	17	266002	4443340
CHP0013311		420 E Church St	Urbana	Italianate	1875	17	265926	4443391
CHP0013411		403 E Church St	Urbana	Vernacular	1900	17	265867	4443356
CHP0013511		324-326 E Church St	Urbana	Gothic Revival	1880	17	265777	4443408
CHP0013611		451 E Church St	Urbana	Queen Anne	1880	17	266015	4443339
CHP0013711		511 E Church St	Urbana	Queen Anne	1885	17	266116	4443328
CHP0013811		130 E Church St	Urbana	Vernacular	1890	17	265525	4443436
CHP0013911		137 E Church St	Urbana	Neo-Classical Revival	1900	17	265535	4443393
CHP0014011		201 E Church St	Urbana	Italianate	1880	17	265568	4443389
CHP0014111		106-108 S Main St	Urbana	Vernacular	1895	17	265362	4443146
CHP0014211		110 S Main St	Urbana	Italianate	1890	17	265360	4443128
CHP0014311	Egenberge Bldg	114 S Main St	Urbana	Italianate	1885	17	265359	4443113
CHP0014411		208 E Church St	Urbana	Greek Revival	1890	17	265587	4443429
CHP0014511		202 E Church St	Urbana	Greek Revival	1870	17	265574	4443430
CHP0014611		136 E Ward St	Urbana	Not Discernable from OHI Form	1890	17	265552	4443557
CHP0014711	Urbana Monument Co	113 E Church St	Urbana	Vernacular	1868	17	265464	4443400
CHP0014811		116 E Ward St	Urbana	Gothic Revival	1890	17	265489	4443564
CHP0014911		119 E Ward St	Urbana	Italianate	1880	17	265488	4443523
CHP0015011		133 E Church St	Urbana	Vernacular	1880	17	265521	4443394
CHP0015111		131 E Ward St	Urbana	Queen Anne	1885	17	265532	4443518
CHP0015211		208 E Ward St	Urbana	Italianate	1880	17	265602	4443553
CHP0015311		126 E Ward St	Urbana	Vernacular	1880	17	265520	4443560
CHP0015411		225 E Ward St	Urbana		1880	17	265648	4443508
CHP0015511		222 E Ward St	Urbana	Italianate	1885	17	265640	4443550
CHP0015611		134 E Church St	Urbana	Neo-Classical Revival	1900	17	265539	4443435
CHP0015811		231 E Ward St	Urbana	Vernacular	1890	17	265660	4443507
CHP0015911	Browne Hall	518 W Reynolds St	Urbana	Queen Anne	1880	17	264832	4442864
CHP0016011	Oak Hall	end of College Way	Urbana	Greek Revival	1856	17	264471	4442474
CHP0016111	Bailey & Barclay Halls	end of College Way	Urbana	Italian Villa	1856	17	264561	4442573
CHP0016211		528 N Main St	Urbana	Vernacular	1880	17	265429	4443765
CHP0016311		535 N Main St	Urbana	Gothic Revival	1880	17	265484	4443777
CHP0016411		104 Lafayette Ave	Urbana	Queen Anne	1905	17	265488	4443818
CHP0016511		548-550 N Main St	Urbana	Neo-Classical Revival	1900	17	265432	4443799
CHP0016611		432 N Main St	Urbana	Italianate	1865	17	265414	4443661
CHP0016711		429 N Main St	Urbana	Italianate	1875	17	265464	4443641
CHP0016811		507 N Main St	Urbana	Italianate	1860	17	265474	4443707
CHP0016911		433 N Main St	Urbana	Italianate	1880	17	265466	4443655
CHP0017011		423 N Main St	Urbana	Gothic Revival	1875	17	265464	4443628
CHP0017111		527 N Main St	Urbana	Gothic Revival	1875	17	265482	4443759
CHP0017211		522 N Main St	Urbana	Greek Revival	1855	17	265427	4443748
CHP0017311		518 N Main St	Urbana	Vernacular	1890	17	265425	4443732
CHP0017411		517 N Main St	Urbana	Vernacular	1880	17	265479	4443742
CHP0017511		505 N Main St	Urbana	Gothic Revival	1830	17	265471	4443690
CHP0017611		513 N Main St	Urbana	Greek Revival	1835	17	265476	4443725
CHP0017711		115 W Court St	Urbana	Gothic Revival	1850	17	265343	4443299
CHP0017811		127 W Court St	Urbana	Greek Revival	1857	17	265312	4443302
CHP0017911		215-217 W Church St	Urbana	Greek Revival	1880	17	265222	4443426
CHP0018011		221 W Court St	Urbana	Italianate	1865	17	265193	4443314
CHP0018111		237 W Court St	Urbana	Italianate	1875	17	265151	4443318
CHP0018211	1st Presbyterian Church	116 W Court St	Urbana	Richardsonian Romanesque	1894	17	265317	4443350
CHP0018311		218 W Court St	Urbana	Italianate	1860	17	265209	4443355
CHP0018411	Hollingshead Funeral Home	318 N Main St	Urbana	Italianate	1875	17	265395	4443484
CHP0018511	1st Baptist Church	401 N Main St	Urbana	Gothic Revival	1882	17	265451	4443565
CHP0018611	American Legion	420 N Main St	Urbana	Queen Anne	1890	17	265411	4443607
CHP0018711		426 N Main St	Urbana	Italianate	1860	17	265413	4443626
CHP0018811		412 N Main St	Urbana	Vernacular	1870	17	265410	4443594
CHP0018911		406 N Main St	Urbana	Italianate	1875	17	265410	4443581
CHP0019011		400 N Main St	Urbana	Greek Revival	1855	17	265409	4443569
CHP0019111		538 N Main St	Urbana	Colonial Revival	1900	17	265430	4443782
CHP0019211		609 N Main St	Urbana	Gothic Revival	1880	17	265503	4443858
CHP0019411		301 W Church St	Urbana	Italianate	1880	17	265128	4443437

OHI #	Present Name	Address	Placename	ArchStyle1	Date	Zone	Easting	Northing
CHP0019511		SEC Dewey & W Court	Urbana	Federal	1860	17	264987	4443346
CHP0019611		309 W Court St	Urbana	Vernacular	1880	17	265102	4443324
CHP0019711		301 W Court St	Urbana	Vernacular	1890	17	265116	4443323
CHP0019811		201 W Court St	Urbana	Italianate	1858	17	265247	4443308
CHP0019911		209 W Court St	Urbana	Greek Revival	1865	17	265220	4443311
CHP0020011		133 W Church St	Urbana	Queen Anne	1885	17	265294	4443417
CHP0020111		203 W Church St	Urbana	Gothic Revival	1865	17	265254	4443417
CHP0020211		106 W Church St	Urbana	Vernacular	1890	17	265386	4443451
CHP0020311		116 W Church St	Urbana	Greek Revival	1865	17	265354	4443461
CHP0020411		122-124 W Church St	Urbana	Italianate	1890	17	265330	4443463
CHP0020511		134 W Church St	Urbana	Gothic Revival	1850	17	265304	4443465
CHP0020611		204 W Church St	Urbana	Vernacular	1865	17	265261	4443469
CHP0020711		222 W Church St	Urbana	Colonial Revival	1905	17	265204	4443475
CHP0020811		234 W Church St	Urbana	Gothic Revival	1845	17	265171	4443477
CHP0020911		315 W Church St	Urbana	Gothic Revival	1875	17	265096	4443439
CHP0021011		231 N Main St	Urbana	Vernacular	1910	17	265433	4443395
CHP0021111	Home Loan Co Bldg	227 N Main St	Urbana	Neo-Classical	1910	17	265433	4443388
CHP0021211	Heatherman Bldg	237 N Main St	Urbana	Revival				
CHP0021311	Williams Furniture	215-223 N Main St	Urbana	Vernacular	1906	17	265434	4443402
CHP0021611	Evangelical Lutheran Church	SEC W Court & Walnut	Urbana	Italianate	1890	17	265431	4443361
CHP0021711		205 W Court St	Urbana	High Victorian	1885	17	265285	4443303
CHP0021811		231-233 W Court St	Urbana	Gothic				
CHP0021911		238 W Court St	Urbana	Greek Revival	1860	17	265234	4443310
CHP0022011		119 W Ward St	Urbana	Vernacular	1865	17	265165	4443317
CHP0022111		121-123 W Ward St	Urbana	Dutch Colonial	1920	17	265155	4443361
CHP0022211		137 W Ward St	Urbana	Revival				
CHP0022311		213 W Ward St	Urbana	Vernacular	1890	17	265369	4443536
CHP0022411		202 W Ward St	Urbana	Vernacular	1840	17	265352	4443537
CHP0022511		216 W Ward St	Urbana	Gothic Revival	1890	17	265312	4443539
CHP0022611		134 W Ward St	Urbana	Vernacular	1900	17	265245	4443548
CHP0022711		132 W Ward St	Urbana	Gothic Revival	1890	17	265277	4443585
CHP0022811		114 W Ward St	Urbana	Gothic Revival	1870	17	265233	4443588
CHP0022911		112 W Ward St	Urbana	Vernacular	1890	17	265321	4443582
CHP0023011		122 W Ward St	Urbana	Italianate	1890	17	265332	4443581
CHP0023111		126 W Ward St	Urbana	Queen Anne	1880	17	265377	4443578
CHP0023211		230 W Court St	Urbana	Vernacular	1900	17	265389	4443572
CHP0023311		430 N Main St	Urbana	Vernacular	1890	17	265364	4443579
CHP0023411		122-124 Miami St	Urbana	Italianate	1860	17	265348	4443580
CHP0023511	Moose Lodge	116-120 Miami St	Urbana	Queen Anne	1890	17	265168	4443359
CHP0023611	Mosgrove Building	117-119 Miami St	Urbana	Italianate	1880	17	265413	4443644
CHP0023711		127 Miami St	Urbana	Vernacular	1895	17	265285	4443220
CHP0023811		160 W Market St	Urbana	Italianate	1890	17	265299	4443219
CHP0023911	Champaign Co Library	218 W Market St	Urbana	Richardsonian	1889	17	265295	4443182
CHP0024011		137 W Market St	Urbana	Romanesque				
CHP0024111		127 W Market St	Urbana	Greek Revival	1835	17	265268	4443185
CHP0024211		211 W Market St	Urbana	Georgian Revival	1930	17	265263	4443099
CHP0024311		221 W Market St	Urbana	Greek Revival	1890	17	265172	4443116
CHP0024411		233 W Water St	Urbana	Gothic Revival	1835	17	265258	4443053
CHP0024511		132 W Reynolds St	Urbana	Gothic Revival	1840	17	265288	4443050
CHP0024611		212 W Reynolds St	Urbana	Greek Revival	1840	17	265187	4443061
CHP0024711		216 W Reynolds St	Urbana	Second	1865	17	265156	4443064
CHP0024811		224 W Reynolds St	Urbana	Empire/Mansard				
CHP0024911		123 W Reynolds St	Urbana	Italian Villa	1880	17	265120	4442952
CHP0025011		131 W Reynolds St	Urbana	Not Discernable from	1858	17	265241	4442856
CHP0025111		314 Miami St	Urbana	OHI Form				
CHP0025211		309 Miami St	Urbana	Vernacular	1865	17	265155	4442866
CHP0025311		121 N Russell St	Urbana	Italianate	1865	17	265132	4442868
CHP0025411	Mosgrove House	323 Miami St	Urbana	Vernacular	1880	17	265270	4442805
CHP0025511		123 N Russell St	Urbana	Gothic Revival	1870	17	265250	4442801
CHP0025611		409-411 Miami St	Urbana	Italianate	1880	17	265070	4443280
CHP0025711		406 Miami St	Urbana	Colonial Revival	1895	17	265088	4443201
CHP0025811		403 Miami St	Urbana	Italianate	1870	17	265049	4443263
CHP0025911		235 Boyce St	Urbana	Greek Revival	1842	17	265051	4443205
			Urbana	Italianate	1870	17	265051	4443282
			Urbana	Italianate	1880	17	264984	4443212
			Urbana	Vernacular	1850	17	264992	4443257
			Urbana	Greek Revival	1860	17	265000	4443211
			Urbana	Greek Revival	1865	17	265727	4443992

OHI #	Present Name	Address	Placename	ArchStyle1	Date	Zone	Easting	Northing
CHP0026011	Dr SV Rader	113 Miami St	Urbana	Italianate	1870	17	265315	4443181
CHP0026111		326 College St	Urbana	Italianate	1865	17	264993	4442740
CHP0026211		407 W Reynolds St	Urbana	Vernacular	1870	17	264956	4442828
CHP0026411		501 W Reynolds St	Urbana	Colonial Revival	1870	17	264907	4442810
CHP0026511	Kinder Oaks	225 College St	Urbana	Craftsman/Arts and Crafts	1900	17	265087	4442666
CHP0026611		400 College St	Urbana	Tudor/English Revival	1930	17	264868	4442755
CHP0026711		335 College St	Urbana	Not Discernable from OHI Form	1850	17	264950	4442669
CHP0026811		413 W Reynolds St	Urbana	Vernacular	1875	17	264941	4442822
CHP0026911		222 College St	Urbana	Italianate	1895	17	265126	4442722
CHP0027011		417 W Reynolds St	Urbana	Vernacular	1890	17	264925	4442816
CHP0027111		314-316 W Reynolds St	Urbana	Queen Anne	1880	17	265031	4442882
CHP0027211		414 W Reynolds St	Urbana	Queen Anne	1890	17	264941	4442878
CHP0027311		228 College St	Urbana	Queen Anne	1895	17	265092	4442719
CHP0027411		322 W Reynolds St	Urbana	Eastlake	1875	17	265012	4442884
CHP0027511		325 W Reynolds St	Urbana	Gothic Revival	1865	17	265000	4442831
CHP0027611		317 W Reynolds St	Urbana	Not Discernable from OHI Form	1900	17	265027	4442830
CHP0027711		302 W Reynolds St	Urbana	Queen Anne	1888	17	265068	4442880
CHP0027811		235 W Reynolds St	Urbana	Greek Revival	1870	17	265104	4442824
CHP0027911		227 W Reynolds St	Urbana	Italianate	1870	17	265127	4442822
CHP0028011		232 W Reynolds St	Urbana	Italianate	1870	17	265108	4442870
CHP0028111	US Post Office	201 W Reynolds St	Urbana	Italianate	1870	17	265188	4442816
CHP0028211		219 W Reynolds St	Urbana	Greek Revival	1860	17	265144	4442821
CHP0028311		200 S Main St	Urbana	Georgian Revival	1932	17	265343	4443041
CHP0028411		317 S Walnut St	Urbana	Vernacular	1890	17	265245	4442907
CHP0028511	Desmond Stephan Mfg Co	209 S Dewey St	Urbana	Queen Anne	1885	17	264950	4442992
CHP0028611		208 S Dewey St	Urbana	Vernacular	1890	17	264902	4442997
CHP0028711		212 College St	Urbana	Italianate	1860	17	265148	4442716
CHP0028811		439-441 S Walnut St	Urbana	Vernacular	1890	17	265224	4442707
CHP0028911	Walnut St Twin Houses	311 W Reynolds St	Urbana	Neo-Classical Revival	1890	17	265044	4442833
CHP0029011		227 W Church St	Urbana	Gothic Revival	1870	17	265192	4443428
CHP0029211		310 Lafayette Ave	Urbana	Queen Anne	1885	17	265772	4443789
CHP0029311		215 Lafayette Ave	Urbana	Queen Anne	1885	17	265653	4443756
CHP0029411		223 Lafayette Ave	Urbana	Gothic Revival	1880	17	265666	4443755
CHP0029511		337 Lafayette Ave	Urbana	Gothic Revival	1875	17	265842	4443738
CHP0029611		314-318 Lafayette Ave	Urbana	Italianate	1880	17	265787	4443788
CHP0029711		227 Lafayette Ave	Urbana	Italianate	1880	17	265679	4443754
CHP0029811		331 Lafayette Ave	Urbana	Gothic Revival	1875	17	265827	4443739
CHP0029911		119 Lafayette Ave	Urbana	Colonial Revival	1895	17	265528	4443765
CHP0030011		108-112 Lafayette Ave	Urbana	Colonial Revival	1890	17	265504	4443817
CHP0030111		132 Lafayette Ave	Urbana	Colonial Revival	1895	17	265570	4443812
CHP0030211		134-136 Lafayette Ave	Urbana	Georgian Revival	1895	17	265586	4443810
CHP0030311		422 Lafayette Ave	Urbana	Italianate	1890	17	265957	4443768
CHP0030411		409 Lafayette Ave	Urbana		1900	17	265923	4443729
CHP0030511		428 Lafayette Ave	Urbana	Vernacular	1910	17	265987	4443763
CHP0030611	Hitching Post	402 Lafayette Ave	Urbana	Italianate	1875	17	265912	4443774
CHP0030711		349 Lafayette Ave	Urbana	Italianate	1880	17	265871	4443735
CHP0030811		339 Lafayette Ave	Urbana	Italianate	1880	17	265856	4443737
CHP0030911		535 Washington Ave	Urbana	Vernacular	1875	17	266214	4443562
CHP0031011		210 Lafayette Ave	Urbana	Vernacular	1880	17	265641	4443804
CHP0031111		505 E Court St	Urbana	Vernacular	1945	17	266084	4443202
CHP0031211		350 E Ward St	Urbana	Vernacular	1890	17	265836	4443528
CHP0031311		346 Lafayette Ave	Urbana	Italianate	1875	17	265876	4443777
CHP0031411	McComb House	562 E Ward St	Urbana	Gothic Revival	1875	17	266280	4443479
CHP0031511		732 E Lawn Ave	Urbana	High Victorian Gothic	1870	17	266435	4444053
CHP0031611		327 E Ward St	Urbana	Greek Revival	1860	17	265785	4443493
CHP0031711		467 E Ward St	Urbana	Vernacular	1890	17	266069	4443458
CHP0031811		313 Lafayette Ave	Urbana	Italianate	1875	17	265767	4443746
CHP0031911		304 Lafayette Ave	Urbana	Italian Villa	1880	17	265742	4443793
CHP0032011		234 E Ward St	Urbana	Vernacular	1890	17	265677	4443546
CHP0032111		411 Lafayette Ave	Urbana	Gothic Revival	1880	17	265938	4443728
CHP0032211		417 Lafayette Ave	Urbana	Vernacular	1880	17	265953	4443726
CHP0032311		446-448 Lafayette Ave	Urbana	Italianate	1880	17	266047	4443758

OHI #	Present Name	Address	Placename	ArchStyle1	Date	Zone	Easting	Northing
CHP0032411		435 Lafayette Ave	Urbana	Not Discernable from OHI Form	1900	17	266012	4443719
CHP0032511		307 Lafayette Ave	Urbana	Shingle	1890	17	265752	4443747
CHP0032611		101 Lafayette Ave	Urbana	Dutch Colonial Revival	1929	17	265511	4443773
CHP0032711		214 Lafayette Ave	Urbana	Gothic Revival	1880	17	265656	4443803
CHP0032811		422 Washington Ave	Urbana	Vernacular	1875	17	265957	4443641
CHP0032911		353 Washington Ave	Urbana	Vernacular	1880	17	265872	4443603
CHP0033011		220-222 Lafayette Ave	Urbana		1880	17	265675	4443801
CHP0033111		404 Washington Ave	Urbana	Queen Anne	1890	17	265899	4443649
CHP0033211		314 Washington Ave	Urbana	Gothic Revival	1880	17	265772	4443662
CHP0033311		337-339 E Ward St	Urbana	Gothic Revival	1880	17	265813	4443490
CHP0033411		354 E Ward St	Urbana	Vernacular	1890	17	265848	4443526
CHP0033511	Iron Fence	402 E Ward St	Urbana	Not Discernable from OHI Form	1890	17	265862	4443525
CHP0033611		553 E Lawn Ave	Urbana	Italianate	1880	17	266483	4443723
CHP0033711		303 E Lawn Ave	Urbana	Italianate	1870	17	266413	4443331
CHP0033811	Sycamore St Store	315 Sycamore St	Urbana	Vernacular	1900	17	266107	4443410
CHP0033911	Sycamore Market	314 Sycamore St	Urbana	Italianate	1875	17	266058	4443412
CHP0034011		209 E Lawn Ave	Urbana	Vernacular	1875	17	266402	4443235
CHP0034111		114 Lafayette Ave	Urbana	Colonial Revival	1890	17	265521	4443816
CHP0034211		221 College St	Urbana	Vernacular	1900	17	265120	4442663
CHP0034311		612 Boyce St	Urbana	Vernacular	1890	17	266367	4443974
CHP0034411		539 Boyce St	Urbana	Vernacular	1855	17	266212	4443934
CHP0034511		127 E Reynolds St	Urbana	Gothic Revival	1880	17	265435	4442793
CHP0034611		347 Boyce St	Urbana	Vernacular	1865	17	265894	4443976
CHP0034711		336 Boyce St	Urbana	Vernacular	1865	17	265870	4444027
CHP0034811		337 Boyce St	Urbana	Vernacular	1870	17	265870	4443978
CHP0034911		338 Boyce St	Urbana	Vernacular	1890	17	265888	4444025
CHP0035011		350 Boyce St	Urbana	Vernacular	1880	17	265907	4444024
CHP0035111		410 Boyce St	Urbana	Vernacular	1870	17	265963	4444019
CHP0035211		815 N Main St	Urbana	Italianate	1885	17	265594	4444250
CHP0035311		820 N Main St	Urbana	Gothic Revival	1880	17	265543	4444265
CHP0035411		749 N Main St	Urbana	Vernacular	1860	17	265574	4444142
CHP0035511		200 W Reynolds St	Urbana	Vernacular	1870	17	265196	4442862
CHP0035611		753 N Main St	Urbana	Italianate	1860	17	265578	4444161
CHP0035711		731 E Lawn Ave	Urbana	Italianate	1880	17	266531	4444037
CHP0035811	Nutwood Place	1428 Nutwood Place	Urbana	Federal	1810	17	265454	4445336
CHP0035911	Carolyn Ave Farm	1201 Norwood Ave	Urbana	Italianate	1880	17	264262	4444906
CHP0036011		232 Boyce St	Urbana	Gothic Revival	1865	17	265728	4444040
CHP0036111		111 E Lawn Ave	Urbana	Vernacular	1870	17	266393	4443126
CHP0036211		883 Scioto St	Urbana	Other	1948	17	267231	4442943
CHP0036311		428 Boyce St	Urbana	Italianate	1880	17	266022	4444012
CHP0036411	Stickley Insurance Agency	128 N Main St	Urbana	Italianate	1875	17	265380	4443299
CHP0036511	Champaign Glass Co	410 Miami St	Urbana		1870	17	264980	4443258
CHP0036611		922 S Main St	Urbana	Vernacular	1875	17	265215	4441891
CHP0036711	Nicole's Fashions	319 N Main St	Urbana	Vernacular	1860	17	265446	4443495
CHP0036811	Staddler's Clothing-Bus Equip	125-127 N Main St	Urbana	Italianate	1870	17	265421	4443293
CHP0036911	Crosby Drugs	123 N Main St	Urbana	Italianate	1875	17	265421	4443281
CHP0037011		552 Scioto St	Urbana	Italianate	1885	17	266216	4443124
CHP0037111	James McKeever House	542 Scioto St	Urbana	Italianate	1880	17	266198	4443126
CHP0037211		527 Scioto St	Urbana		1860	17	266141	4443079
CHP0037311	Russell Ludwick House	511 Scioto St	Urbana	Italianate	1875	17	266086	4443075
CHP0037411	Chance House	463 Scioto St	Urbana	Gothic Revival	1860	17	265994	4443085
CHP0037511	Belva Stallsmith House	445 Scioto St	Urbana	Italianate	1880	17	265947	4443090
CHP0037611	Clarence J Brown Jr House	430 Scioto St	Urbana	Italianate	1870	17	265903	4443160
CHP0037711		443? Scioto St	Urbana	Queen Anne	1885	17	265917	4443090
CHP0037811	James Johnson House	419 Scioto St	Urbana	Italian Villa	1865	17	265877	4443093
CHP0037911	Edythe Huston House	413 Scioto St	Urbana	Vernacular	1875	17	265855	4443117
CHP0038011	Barnhart's & Crabill's Hambrgr	602 N Main St	Urbana	Vernacular	1925	17	265471	4443887
CHP0038111	Hardware/Farm Supply Store	101 Talbot Ave	Urbana	Vernacular	1900	17	265705	4444207
CHP0038211	Boldman Printing Co Bldg	122 S Main St	Urbana	Italianate	1900	17	265358	4443098

OHI #	Present Name	Address	Placename	ArchStyle1	Date	Zone	Easting	Northing
CHP0038311	Perpetual Fed Savings & Loan	124-126 N Main St	Urbana	Neo-Classical Revival	1925	17	265379	4443287
CHP0038411	Guild Galleries Interiors	118 N Main St	Urbana	Italianate	1901	17	265378	4443274
CHP0038511	Beneficial Loan Bldg	108 Miami St	Urbana	Vernacular	1920	17	265322	4443217
CHP0038611	Urbana TV & Audio	106 Miami St	Urbana	Vernacular	1920	17	265334	4443216
CHP0038711	Urbana Cinema	216 S Main St	Urbana	Art Moderne	1905	17	265342	4443012
CHP0038811	Cycle Lab	400 Miami St	Urbana		1900	17	265009	4443255
CHP0038911	Urbana Mills Grain Elevator	716 Miami St	Urbana	Vernacular	1870	17	264737	4443423
CHP0039011	City Bakery	225 N Main St	Urbana	Vernacular	1900	17	265432	4443381
CHP0039111	Western Auto	111 S Main St	Urbana	Vernacular	1895	17	265401	4443133
CHP0039211	Gaumer Printing & WCOM Radio	225 S Main St	Urbana	Commercial/Chicago Style	1930	17	265389	4442970
CHP0039311	State Farm Insurance	125 S Main St	Urbana	Italianate	1895	17	265397	4443089
CHP0039411		121 S Main St	Urbana	Vernacular	1900	17	265398	4443100
CHP0039611	Ol' South Restaurant	15 Monument Sq	Urbana	Vernacular	1880	17	265426	4443162
CHP0039711	Mumfords Apartments	205 Scioto St	Urbana	Vernacular	1925	17	265543	4443152
CHP0039811	Tire Shop	138 E Court St	Urbana	Colonial Revival	1910	17	265528	4443323
CHP0039911		136-136 1/2 E Court St	Urbana	Vernacular	1880	17	265515	4443324
CHP0040011	Evans & Collins Optometrists	303 N Main St	Urbana	Vernacular	1920	17	265440	4443444
CHP0040111	Millner's Cafeteria	207 N Main St	Urbana	Vernacular	1910	17	265430	4443343
CHP0040211	Boston Store	121 N Main St	Urbana	Vernacular	1910	17	265419	4443268
CHP0040311	Bargain World	113 N Main St	Urbana	Vernacular	1890	17	265418	4443255
CHP0040411	Litton's Punch Whitman Shoes	107 N Main St	Urbana	Italianate	1880	17	265417	4443229
CHP0040511	Citizens National Bank	1 Monument Sq	Urbana	Colonial Revival	1929	17	265415	4443214
CHP0040711		566 Scioto St	Urbana	Vernacular	1925	17	266254	4443120
CHP0040811	Fred Banion House	559 Scioto St	Urbana	Colonial Revival	1930	17	266239	4443063
CHP0040911		540 Scioto St	Urbana	Vernacular	1925	17	266179	4443128
CHP0041011	Charles Havens House	555 Scioto St	Urbana	Dutch Colonial Revival	1925	17	266215	4443066
CHP0041111	Carl Roemer House	503 Scioto St	Urbana	Queen Anne	1895	17	266064	4443077
CHP0041211	Rex Ponn House	501 Scioto St	Urbana	Colonial Revival	1925	17	266042	4443079
CHP0041411	Charles Bowers House	460 Scioto St	Urbana	Colonial Revival	1910	17	265992	4443151
CHP0041511	Roy Doss House	451 Scioto St	Urbana	Colonial Revival	1920	17	265970	4443088
CHP0041611	Tery Miller House	409 Scioto St	Urbana	Vernacular	1890	17	265837	4443118
CHP0041711	Robert Thorpe House	403 Scioto St	Urbana	Queen Anne	1875	17	265821	4443119
CHP0041811	Frederick Seeburg House	316 Scioto St	Urbana	Vernacular	1890	17	265719	4443179
CHP0041911	Russell Daniels House	306 Scioto St	Urbana	Second Empire/Mansard	1895	17	265684	4443183
CHP0042011	Kathy Barr House	226 Scioto St	Urbana	Vernacular	1920	17	265610	4443194
CHP0042111		220 Scioto St	Urbana	Not Discernable from OHI Form	1920	17	265589	4443195
CHP0042211	Designers Cove Hair Salon	216 Scioto St	Urbana	Vernacular	1915	17	265578	4443195
CHP0042311		214 Scioto St	Urbana		1890	17	265568	4443196
CHP0042411	Union 76 Gas Station	208 Miami St	Urbana	Chateausque	1930	17	265232	4443230
CHP0042511	Old Chevrolet Dealer	325 N Main St	Urbana	Vernacular	1930	17	265448	4443520
CHP0042611	Anne Knowlton House	448 Scioto St	Urbana	Tudor/English Revival	1925	17	265954	4443154
CHP0042811	J Ward School	725 S Main St	Urbana	Second Renaissance Revival	1899	17	265325	4442238
CHP0042911	Roscoe W Cox House	219 Elbert St	Urbana	Queen Anne	1885	17	265333	4443955
CHP0043011	Jr High School	500 Washington Ave	Urbana	Late Gothic Revival	1900	17	266246	4443728
CHP0043111	North District School	626 Russell St	Urbana	Neo-Classical Revival	1901	17	265057	4443999
CHP0043211		220 Elbert St	Urbana	Italianate	1885	17	265366	4443988
CHP0043311	Vienna O Stout House	119 S High St	Urbana	Craftsman/Arts and Crafts	1920	17	265144	4443144
CHP0043411	Greg Stepp House	226 W Water St	Urbana	Italianate	1895	17	265137	4442995
CHP0043511	Dayton Power & Light	Dugan St at Railroad	Urbana	Vernacular	1870	17	265314	4443733
CHP0043611	Howard Paper Co Plant & Office	700 W Court St (at Union Aly)	Urbana	Colonial Revival	1910	17	264690	4443579
CHP0043711	WH Marvin Co Building	600 Miami St	Urbana	Colonial Revival	1915	17	264849	4443292
CHP0043811	Johnson Mfg Co	605 Miami St	Urbana	Vernacular	1902	17	264779	4443185
CHP0044011		500 Russell St	Urbana	Vernacular	1930	17	265050	4443791
CHP0044111		232 High St	Urbana	Colonial Revival	1910	17	265045	4443055

OHI #	Present Name	Address	Placename	ArchStyle1	Date	Zone	Easting	Northing
CHP0044211	Water Tower	btwn 573 & 617 E Lawn Ave	Urbana		1910	17	266473	4443833
CHP0044311	Pump Station	429 Storms Ave	Urbana	Vernacular	1878	17	264651	4442831
CHP0044411	Oakdale Cemetery	319 Patrick Ave	Urbana	Second	1870	17	266964	4442443
CHP0044511	Manager's House			Empire/Mansard				
CHP0044511	Methodist Church	238 N Main St	Urbana	Colonial Revival	1901	17	265374	4443410
CHP0044611	First Christian Cch of Urbana	119 Orange St	Urbana	Vernacular	1920	17	265364	4444064
CHP0044711	St Mary's School	229 Washington Ave	Urbana	Colonial Revival	1905	17	265613	4443621
CHP0044811	St Mary's Church	231 Washington Ave	Urbana	Colonial Revival	1905	17	265657	4443619
	Parsonage							
CHP0044911	Sweden Borgian Church	334 S Main St	Urbana	Romanesque Revival	1882	17	265326	4442848
CHP0045011	Masonic Temple-Lodge #525	226 N Main St	Urbana	Colonial Revival	1900	17	265373	4443391
CHP0045111	IOOF Union Assoc of Men	107 Scioto St	Urbana	Romanesque Revival	1888	17	265441	4443167
CHP0045211		318 W Light St	Urbana	Vernacular	1885	17	265212	4444276
CHP0045311	Conrail	630 Miami St	Urbana	Romanesque Revival	1880	17	264758	4443289
CHP0045411	Watering Station	S of Dugan St on Railroad	Urbana	Vernacular	1870	17	265150	4443654
CHP0045511	Christina Entern	511 Miami St	Urbana	Vernacular	1926	17	264871	4443214
CHP0045611		330 Laurel Oak St	Urbana	Italianate	1890	17	265370	4443920
CHP0045711	John M Campbell House	336 Loudon St	Urbana	Vernacular	1890	17	265200	4443994
CHP0045811	Lester L Baldwin House	424 Loudon St	Urbana	Italianate	1895	17	265207	4444100
CHP0045911	Dr Aults Office	118 Scioto St	Urbana	Italianate	1900	17	265480	4443201
CHP0046011	Barnhart Storage	552 N Main St	Urbana	Vernacular	1840	17	265438	4443830
CHP0046111		116 E Reynolds St	Urbana	Vernacular	1830	17	265412	4442835
CHP0046211		130-132 E Ward St	Urbana	Vernacular	1890	17	265536	4443559
CHP0046311	Margaret Kitchen House	212 W Ward St	Urbana	Vernacular	1880	17	265248	4443587
CHP0046411		SEC E Water & Kenton (?)	Urbana	Bungalow	1925	17	265780	4442871
CHP0046511	Lloyd Bramer House	131 E Water St	Urbana	Second	1890	17	265466	4442911
				Empire/Mansard				
CHP0046611	St Paul AME Church	316 E Market St	Urbana	Greek Revival	1866	17	265704	4443053
CHP0046711	Florencio Banavides House	402 E Water St	Urbana	Vernacular	1915	17	265804	4442920
CHP0047014	Laird's Tax Service	1-5 N Main St	Mechanicsburg	Italianate	1870	17	282002	4438663
CHP0047114	Masonic Temple	12 N Main St	Mechanicsburg	Jacobethian	1909	17	282021	4438712
CHP0047214	Village Hobby Shop	7 N Main St	Mechanicsburg	Italianate	1880	17	281994	4438672
CHP0047314	D Padamaden Offices	15 N Main St	Mechanicsburg	Greek Revival	1830	17	281983	4438692
CHP0047414		21 N Main St	Mechanicsburg	Italianate	1875	17	281976	4438702
CHP0047514		24 N Main St	Mechanicsburg	Colonial Revival	1880	17	281994	4438739
CHP0047614	IOOF Lodge	28 N Main St	Mechanicsburg	Queen Anne	1893	17	281986	4438748
CHP0047714		29-31 N Main St	Mechanicsburg	Queen Anne	1890	17	281954	4438728
CHP0047814		30-32 N Main St	Mechanicsburg	Vernacular	1870	17	281976	4438762
CHP0047914		33 N Main St	Mechanicsburg	Vernacular	1865	17	281942	4438741
CHP0048014		37 N Main St	Mechanicsburg	Colonial Revival	1900	17	281923	4438765
CHP0048114	United Methodist Church	50 N Main St	Mechanicsburg	High Victorian Gothic	1894	17	281939	4438808
CHP0048214		40 N Main St	Mechanicsburg	Queen Anne	1890	17	281954	4438792
CHP0048314		45 N Main St	Mechanicsburg	Vernacular	1875	17	281908	4438786
CHP0048414	John Robinson House	77 S Main St	Mechanicsburg	Vernacular	1880	17	282179	4438433
CHP0048514		109 N Main St	Mechanicsburg	Queen Anne	1885	17	281856	4438842
CHP0048614		110 N Main St	Mechanicsburg	Queen Anne	1880	17	281889	4438871
CHP0048714	Doerman House	115 N Main St	Mechanicsburg	Queen Anne	1897	17	281847	4438854
CHP0048814		117 N Main St	Mechanicsburg	Italianate	1880	17	281838	4438866
CHP0048914		122 N Main St	Mechanicsburg		1880	17	281865	4438900
CHP0049014		125 N Main St	Mechanicsburg	Vernacular	1850	17	281820	4438892
CHP0049114	Mennonite Church	127 N Main St	Mechanicsburg	Queen Anne	1880	17	281811	4438903
CHP0049214		135 N Main St	Mechanicsburg	Vernacular	1895	17	281802	4438916
CHP0049314		147 N Main St	Mechanicsburg	Vernacular	1880	17	281774	4438951
CHP0049414		145 N Main St	Mechanicsburg	Vernacular	1880	17	281784	4438940
CHP0049514		136 N Main St	Mechanicsburg	Colonial Revival	1920	17	281841	4438930
CHP0049714		202 W Main St	Mechanicsburg	Queen Anne	1880	17	281729	4439037
CHP0049813	Mechanicsburg Park	N of Main St on edge of town	Mechanicsburg		1870	17	281200	4439160
CHP0049914	Hatcher Hotel	1 S Main St	Mechanicsburg	Italianate	1874	17	282017	4438634
CHP0050014	Saxbe Offices	16 S Main St	Mechanicsburg	Italianate	1881	17	282077	4438636
CHP0050114	Margo's Beauty Salon	5 S Main St	Mechanicsburg	Italianate	1880	17	282022	4438629

OHI #	Present Name	Address	Placename	ArchStyle1	Date	Zone	Easting	Northing
CHP0050214	Don's Barber Shop	7 S Main St	Mechanicsburg	Italianate	1877	17	282027	4438623
CHP0050314	Anderson's Clothing Store	11 S Main St	Mechanicsburg	Italianate	1880	17	282032	4438617
CHP0050414	Home Savings Bank	15 S Main St	Mechanicsburg	Italianate	1885	17	282039	4438609
CHP0050514	Holland's Hardware N Section	27? S Main St	Mechanicsburg	Italianate	1880	17	282066	4438576
CHP0050614	Hollands Hardware	29? S Main St	Mechanicsburg	Italianate	1880	17	282073	4438568
CHP0050714	Custom Printing Hills Gifts	30? S Main St	Mechanicsburg	Vernacular	1937	17	282108	4438594
CHP0050814	Joseph E Wing Memorial Library	60 S Main St	Mechanicsburg	Colonial Revival	1940	17	282175	4438511
CHP0050914	Church of Our Savior	56 S Main St	Mechanicsburg	High Victorian Gothic	1893	17	282160	4438536
CHP0051014		88 S Main St	Mechanicsburg	Italianate	1890	17	282229	4438440
CHP0051114		59 S Main St	Mechanicsburg	Vernacular	1870	17	282143	4438474
CHP0051214	Ohio Grain Co Elevators	S Main at Railroad	Mechanicsburg	Vernacular	1900	17	282288	4438391
CHP0051314	Norval Hunter Farm	129 S Main St	Mechanicsburg	Italianate	1850	17	282232	4438160
CHP0051414		271 W Main St	Mechanicsburg	Queen Anne	1895	17	281502	4439001
CHP0051513	Civil Span-Amer & WWI Monument	Maple Grove Cemetery	Goshen (Township of)		1901	17	281158	4437373
CHP0051614		103 Race St	Mechanicsburg	Italianate	1875	17	282052	4438906
CHP0051714	Cain House	116 E Sandusky St	Mechanicsburg	Italianate	1878	17	282193	4438843
CHP0051814	Molly S Kennedy House	127 E Sandusky St	Mechanicsburg	Vernacular	1900	17	282258	4438822
CHP0051914	Mathews House	150 E Sandusky St	Mechanicsburg	Queen Anne	1900	17	282292	4438931
CHP0052014	2nd Baptist Church	abt 29 E Sandusky St	Mechanicsburg	Greek Revival	1858	17	282132	4438709
CHP0052114		159 E Sandusky St	Mechanicsburg	Vernacular	1880	17	282364	4438910
CHP0052214		201 E Sandusky St	Mechanicsburg	Italianate	1880	17	282459	4439011
CHP0052314		257 E Sandusky St	Mechanicsburg	Italianate	1885	17	282561	4439113
CHP0052414	Mechanicsburg Baptist Church	112 W Sandusky St	Mechanicsburg	Gothic Revival	1890	17	281878	4438576
CHP0052514	St Michael Cath Church	40 Walnut St	Mechanicsburg	Gothic Revival	1888	17	281835	4438703
CHP0052614		118 Walnut St	Mechanicsburg	Greek Revival	1835	17	281761	4438794
CHP0052714		abt 30 E Sandusky St	Mechanicsburg	Greek Revival	1835	17	282095	4438745
CHP0052814	African Meth Episcopal Cch	49 Walnut St	Mechanicsburg	Vernacular	1881	17	281787	4438693
CHP0052914		19 Locust St	Mechanicsburg	Vernacular	1900	17	282080	4438801
CHP0053014		169 E Sandusky St	Mechanicsburg	Vernacular	1900	17	282399	4438949
CHP0053114		24 School St	Mechanicsburg	Vernacular	1900	17	281980	4438959
CHP0053214		26 School St	Mechanicsburg	Vernacular	1900	17	281969	4438973
CHP0053314		27 Willow St	Mechanicsburg	Vernacular	1900	17	282482	4438922
CHP0053414		56 Willow St	Mechanicsburg	Vernacular	1900	17	282560	4438901
CHP0053514		66 School St	Mechanicsburg	Vernacular	1900	17	281897	4439058
CHP0053814		49 High St	Mechanicsburg	Vernacular	1900	17	281880	4439079
CHP0053914		55 High St	Mechanicsburg	Vernacular	1910	17	281898	4439093
CHP0054014		70 High St	Mechanicsburg	Gothic Revival	1900	17	281911	4439151
CHP0054114		71 High St	Mechanicsburg	Vernacular	1900	17	281944	4439126
CHP0054214		84 High St	Mechanicsburg	Vernacular	1910	17	281946	4439176
CHP0054314		111 High St	Mechanicsburg	Gothic Revival	1900	17	282036	4439198
CHP0054414		119 High St	Mechanicsburg	Gothic Revival	1900	17	282050	4439210
CHP0054514		120 High St	Mechanicsburg	Gothic Revival	1890	17	282031	4439252
CHP0054614		130 High St	Mechanicsburg	Vernacular	1900	17	282053	4439269
CHP0054714		143 High St	Mechanicsburg	Gothic Revival	1880	17	282111	4439260
CHP0054814		168 High St	Mechanicsburg	Gothic Revival	1880	17	282140	4439340
CHP0054914		36 N Main St	Mechanicsburg	Vernacular	1890	17	281965	4438776
CHP0055014		149 N Main St	Mechanicsburg	Gothic Revival	1880	17	281764	4438964
CHP0055114		205 W Main St	Mechanicsburg	Gothic Revival	1880	17	281728	4438990
CHP0055214		223 W Main St	Mechanicsburg	Gothic Revival	1880	17	281669	4438987
CHP0055314	Dr Ream's Office	160 N Main St	Mechanicsburg	Vernacular	1880	17	281790	4439002
CHP0055414		278 W Main St	Mechanicsburg	Vernacular	1880	17	281481	4439042
CHP0055514		286 W Main St	Mechanicsburg	Vernacular	1880	17	281444	4439050
CHP0055614		345 W Main St	Mechanicsburg	Vernacular	1880	17	281258	4439016
CHP0055714		353 W Main St	Mechanicsburg	Vernacular	1800	17	281225	4439019
CHP0055814		352 W Main St	Mechanicsburg	Vernacular	1880	17	281236	4439065
CHP0055914		394 W Main St	Mechanicsburg	Vernacular	1880	17	281097	4439070
CHP0056014		412 W Main St	Mechanicsburg	Vernacular	1880	17	281025	4439041
CHP0056114		85 S Main St	Mechanicsburg	Vernacular	1880	17	282203	4438404
CHP0056214		38 Lynn St	Mechanicsburg	Vernacular	1880	17	282026	4439069
CHP0056314		57 Lynn St	Mechanicsburg	Vernacular	1880	17	282113	4439088
CHP0056414		93 Lynn St	Mechanicsburg	Vernacular	1880	17	282218	4439170
CHP0056514		110 Lynn St	Mechanicsburg	Vernacular	1880	17	282217	4439227

OHI #	Present Name	Address	Placename	ArchStyle1	Date	Zone	Easting	Northing
CHP0056614		15 Race St	Mechanicsburg	Vernacular	1880	17	281952	4438829
CHP0056714		27 Race St	Mechanicsburg	Vernacular	1880	17	281989	4438854
CHP0056814		111 Race St	Mechanicsburg	Gothic Revival	1880	17	282078	4438924
CHP0056914		126 Race St	Mechanicsburg	Vernacular	1880	17	282104	4438999
CHP0057014		160 Race St	Mechanicsburg	Gothic Revival	1880	17	282173	4439056
CHP0057114	James Hunt House	abt 36 E Sandusky St	Mechanicsburg	Gothic Revival	1850	17	282118	4438765
CHP0057214	Davis House	102 E Sandusky St	Mechanicsburg	Gothic Revival	1860	17	282156	4438809
CHP0057314		114? E Sandusky St	Mechanicsburg	Vernacular	1880	17	282176	4438826
CHP0057414		211 E Sandusky St	Mechanicsburg	Vernacular	1880	17	282471	4439023
CHP0057514		227 E Sandusky St	Mechanicsburg	Vernacular	1880	17	282516	4439072
CHP0057614		38 School St	Mechanicsburg	Vernacular	1880	17	281942	4439003
CHP0057714		42 School St	Mechanicsburg	Vernacular	1880	17	281932	4439015
CHP0057814		101 Walnut St	Mechanicsburg	Vernacular	1880	17	281770	4438724
CHP0057914		135 Walnut St	Mechanicsburg	Vernacular	1880	17	281692	4438817
CHP0058014		213 Walnut St	Mechanicsburg	Vernacular	1880	17	281637	4438884
CHP0058114		20 Willow St	Mechanicsburg	Vernacular	1880	17	282488	4438977
CHP0058214		36 Willow St	Mechanicsburg	Gothic Revival	1880	17	282517	4438943
CHP0058311		410 E Court St	Urbana	Queen Anne	1895	17	265881	4443285
CHP0058411	Champaign Co Fairgrounds	Henry St & Powell Ave	Urbana	Vernacular	1870	17	265954	4442178
CHP0073103	Kingscreek Baptist Church	1250 Kennard-Kingscreek Rd	Kingscreek	Greek Revival	1849	17	267843	4449049
CHP0093811	ONG Armory Motor Veh Storage	1412 N Main St	Urbana	Vernacular	1950	17	265629	4445469
CHP0093911	Corwin House	1117 Miami St	Urbana	Italianate	1860	17	263946	4443335
CHP0094011	Skates House	1116 Miami St	Urbana	Vernacular	1910	17	263968	4443374
CHP0094111		1120 Miami St	Urbana	Vernacular	1900	17	263936	4443377
CHP0094211		119 N Edgewood Ave	Urbana	Vernacular	1900	17	263952	4443432
CHP0094311	Copas House	201 N Edgewood Ave	Urbana	Vernacular	1910	17	263956	4443488
CHP0094411		209 N Edgewood Ave	Urbana	Vernacular	1910	17	263957	4443512
CHP0094511	Craig House	211 N Edgewood Ave	Urbana	Vernacular	1910	17	263960	4443535
CHP0094611		231 N Edgewood Ave	Urbana	Gothic Revival	1880	17	263962	4443570
CHP0094711	West Cottage	315 N Edgewood Ave	Urbana	Vernacular	1910	17	263966	4443627
CHP0094811	Fife House	317 N Edgewood Ave	Urbana	Colonial Revival	1930	17	263973	4443652
CHP0094910	Cyburn House	318 N Edgewood Ave	Urbana	Craftsman/Arts and Crafts	1920	17	263921	4443668
CHP0095011		319 N Edgewood Ave	Urbana	Vernacular	1910	17	263972	4443669
CHP0095111	Goodwin House	321 N Edgewood Ave	Urbana	Vernacular	1910	17	263973	4443684
CHP0095210		322 N Edgewood Ave	Urbana	Vernacular	1925	17	263923	4443692
CHP0095311		407 N Edgewood Ave	Urbana	Vernacular	1870	17	263984	4443758
CHP0095410		N end of Edgewood Ave	Urbana	Vernacular	1910	17	263880	4444260
CHP0095510	Converse Driving Park	Norwood Ave	Urbana	Gothic Revival	1873	17	264263	4444688
CHP0095611		1220 Norwood Ave	Urbana	Craftsman/Arts and Crafts	1910	17	264107	4444958
CHP0099011	Tom & Marlene Birt House	610 S Edgewood Ave	Urbana (Township of)	Italianate	1874	17	263740	4442524
CHP0099110	Urbans Materials Scalehouse/office	1261 Muzzys Rd	Urbana (Township of)	Vernacular	1936	17	263283	4442636
CHP0099210	Gilliam Family House	1340 Muzzys Rd	Urbana (Township of)	Vernacular	1814	17	263344	4442841
CHP0099310	Pennsylvania Railroad	Paralleling US 36	Urbana (Township of)		1853	17	262752	4442805
CHP0099410	Pennsylvania RR Radio Tower Shed	beside 1570 Muzzys Rd	Urbana (Township of)	Vernacular	1940	17	263048	4442866
CHP0099510	Raymond & Deanna Phelps House	1602 US 36 W	Urbana (Township of)	Vernacular	1848	17	262908	4443261
CHP0099610		E of 1535 W US 36	Urbana (Township of)	Vernacular	1880	17	263382	4443432
CHP0099711	Valley Ridge Farm No 1	700 Emmalyn Ave	Urbana (Township of)	Craftsman/Arts and Crafts	1910	17	264244	4445075
CHP0099811	Ernst & Eileen Asman House	734 Emmalyn Ave	Urbana (Township of)	Vernacular	1880	17	264138	4445082
CHP0100010		W of 1640 Millerstown Rd	Urbana (Township of)	Vernacular	1894	17	262873	4445426
CHP0100110	American Aggregates Sand & Gravel	1261 Muzzys Rd	Urbana (Township of)	Other	1944	17	263280	4442520
CHP0100203	Pennsylvania Railroad	NE of Urbana	Salem (Township of)		1853	17	269897	4447178
CHP0100310	Reynolds Property	1272 N Dugan Rd	Urbana (Township of)	Vernacular	1900	17	268813	4444788
CHP0100410	Denny Bolton House	1063 N Dugan Rd	Urbana (Township of)	Greek Revival	1840	17	269029	4444453
CHP0100510		1001 N Dugan Rd	Urbana (Township of)	Vernacular	1840	17	268941	4444319
CHP0100610	Al & Doris Mapp House	718 N Dugan Rd	Urbana (Township of)	Vernacular	1894	17	268886	4443911
CHP0100710	Willowwood	655 N Dugan Rd	Urbana (Township of)	Vernacular	1840	17	269228	4443825

OHI #	Present Name	Address	Placename	ArchStyle1	Date	Zone	Easting	Northing
CHP0100810		US 36 E (E of Dugan Rd)	Urbana (Township of)	Vernacular	1860	17	269247	4443308
CHP0100910	Michael Manuel House	2307 US 36 E	Urbana (Township of)	Vernacular	1894	17	269336	4442938
CHP0101010	Ken Nuzum House	2629 US 36 E	Urbana (Township of)	Italianate	1850	17	270042	4442689
CHP0101110		2790 US 36 E	Urbana (Township of)	Vernacular	1858	17	270140	4443155
CHP0101210	Hester Copes Tombstone	380 Three Mile Rd	Urbana (Township of)		1842	17	270307	4442343
CHP0101310	Lewis W Terry House	2925 E SR 29	Urbana (Township of)	Vernacular	1894	17	270021	4441253
CHP0101410	Whitehall Farm	2819 E SR 29	Urbana (Township of)	Vernacular	1827	17	269862	4441303
CHP0101510	Rhonda Roberts House	2806 E SR 29	Urbana (Township of)	Vernacular	1894	17	269859	4441730
CHP0101610	Da-Ja View Farms	2433 E SR 29	Urbana (Township of)	Vernacular	1930	17	269294	4441667
CHP0101710	Klooley Property	1265 S Dugan Rd	Urbana (Township of)	Vernacular	1858	17	268633	4441158
CHP0101810	Joyce & Chris Nelson	1751 S Dugan Rd	Urbana (Township of)	Italianate	1864	17	268711	4440371
CHP0101910	Oak View Farms	1895 Short Cut Rd	Urbana (Township of)	Vernacular	1858	17	267811	4440297
CHP0102010	Connelly Property	1888 Short Cut Rd	Urbana (Township of)	Gothic Revival	1880	17	267645	4440241
CHP0102110	Tina Bowser House	1892 Short Cut Rd	Urbana (Township of)	Vernacular	1870	17	267661	4440048
CHP0102210		2267 SR 54	Urbana (Township of)	Vernacular	1880	17	266807	4439235
CHP0102311	ODOT District 7	217 S Edgewood Ave	Urbana	Vernacular	1939	17	263940	4443200
CHP0102411	Champaign County Engineer Store	428 Beech St	Urbana	Vernacular	1910	17	264090	4443240
CHP0102511		1112-112 1/2 Miami St	Urbana	Vernacular	1890	17	263983	4443372
CHP0102611		1108 Miami St	Urbana	Vernacular	1890	17	264000	4443370
CHP0102711		1106 Miami St	Urbana	Vernacular	1890	17	264015	4443368
CHP0102811		1028 Miami St	Urbana	Vernacular	1900	17	264045	4443364
CHP0102911		1022 Miami St	Urbana	Vernacular	1905	17	264061	4443362
CHP0103011		1018 Miami St	Urbana	Vernacular	1905	17	264076	4443361
CHP0103111		1006 Miami St	Urbana	Vernacular	1890	17	264107	4443358
CHP0103211		948-950 Miami St	Urbana	Vernacular	1900	17	264158	4443351
CHP0103311		951-953 Miami St	Urbana		1900	17	264143	4443313
CHP0103411	Sylvia Gonzalez House	1001 Miami St	Urbana	Vernacular	1900	17	264127	4443315
CHP0103511	House	1005 Miami St	Urbana		1900	17	264112	4443316
CHP0103611		1007 Miami St	Urbana	Vernacular	1910	17	264097	4443318
CHP0103711	Bryant McConnell House	1009 Miami St	Urbana	Vernacular	1890	17	264085	4443319
CHP0103811		1023-1023B Miami St	Urbana	Queen Anne	1890	17	264057	4443322
CHP0103911		1027 Miami St	Urbana	Vernacular	1890	17	264043	4443324
CHP0104011	Wes Beery House	1107 Miami St	Urbana	Vernacular	1900	17	264011	4443327
CHP0104111	Robert Tate House	1109 Miami St	Urbana	Vernacular	1910	17	263996	4443330
CHP0104211	Diane Corwin House	1115 Miami St	Urbana	Dutch Colonial Revival	1910	17	263970	4443333
CHP0104311		120 Sara St	Urbana	Vernacular	1880	17	264017	4443414
CHP0104411		121-123 Sara St	Urbana	Vernacular	1890	17	264055	4443416
CHP0104511		127 Sara St	Urbana	Vernacular	1890	17	264055	4443432
CHP0104611		129 Sara St	Urbana	Vernacular	1890	17	264056	4443444
CHP0104711	Evilsizor House	206 Sara St	Urbana	Vernacular	1890	17	264027	4443487
CHP0104811		218 Sara St	Urbana	Vernacular	1890	17	264029	4443512
CHP0104911		220 Sara St	Urbana	Vernacular	1890	17	264030	4443525
CHP0105011		230 Sara St	Urbana	Vernacular	1890	17	264034	4443562
CHP0105111		306 Sara St	Urbana	Vernacular	1890	17	264038	4443608
CHP0105211		223 Sara St	Urbana	Vernacular	1920	17	264066	4443534
CHP0105311	Ronald & Peggy Helterbran House	221 Sara St	Urbana	Vernacular	1890	17	264065	4443522
CHP0105411		215 Sara St	Urbana	Vernacular	1890	17	264064	4443509
CHP0105511		203 Sara St	Urbana	Vernacular	1890	17	264062	4443484
CHP0105611		120 Freeman Ave	Urbana	Vernacular	1890	17	264126	4443400
CHP0105711	Dan Louder House	132 Freeman Ave	Urbana	Vernacular	1890	17	264127	4443421
CHP0105811		134 Freeman Ave	Urbana	Vernacular	1890	17	264129	4443437
CHP0105911	Agnes Saylor House	206 Freeman Ave	Urbana	Vernacular	1900	17	264133	4443468
CHP0106011	Charles & Jeanette Thornburg House	119 Freeman Ave	Urbana	Vernacular	1890	17	264169	4443395
CHP0106103		1350 Millerstown Rd	Salem (Township of)	Vernacular	1870	17	263707	4445412
CHP0106203		1370-1372 Millerstown Rd	Salem (Township of)	Vernacular	1870	17	263582	4445423
CHP0106303	Boyd Property	1495 W SR 29	Salem (Township of)	Vernacular	1910	17	263783	4445531
CHP0107003	Farm	1014 W Herr Rd	Salem (Township of)	Vernacular	1858	17	264182	4449926
CHP0107103	Curfield Family Cemetery	1014 W Herr Rd	Salem (Township of)		1837	17	264267	4450174
CHP0107403	Theresa Horsley House	1133 Lippincott Rd	Salem (Township of)	Vernacular	1895	17	264222	4452622
CHP0107503	Virginia Tullis House	1112 Lippincott Rd	Salem (Township of)	Vernacular	1894	17	264277	4452701
CHP0107603	Riblett Packaging	955 Lippincott Rd	Salem (Township of)	Vernacular	1830	17	264589	4452588
CHP0107703	Thomas Detwiler House	7419 Upper Valley Pike	Salem (Township of)	Greek Revival	1845	17	265493	4455620
CHP0107803	Hazel Byler House	7496 US 68 N	Salem (Township of)	Vernacular	1913	17	265736	4455727

OHI #	Present Name	Address	Placename	ArchStyle1	Date	Zone	Easting	Northing
CHP0107903	Cinci & Lake Erie Railroad	US 68	Salem (Township of)		1901	17	266526	4452060
CHP0108003	B Wirick & B Swisher House	7003 US 68 N	Salem (Township of)	Vernacular	1874	17	266302	4454918
CHP0108103	B Wirick & B Swisher House	7005 US 68 N	Salem (Township of)	Vernacular	1894	17	266531	4455149
CHP0108203	Ed Dennis House	6822 W Kanagy Rd	Salem (Township of)	Vernacular	1894	17	266057	4454604
CHP0108303	Polly Jordan House	6654 W Kanagy Rd	Salem (Township of)	Greek Revival	1840	17	266204	4454305
CHP0108403		6784 Funk Rd	Salem (Township of)	Vernacular	1894	17	266639	4454454
CHP0108503		6484 Funk Rd	Salem (Township of)	Vernacular	1880	17	266723	4453983
CHP0108603		6295 US 68 N	Salem (Township of)	Vernacular	1858	17	266743	4453708
CHP0108703		6374 US 68 N	Salem (Township of)	Vernacular	1894	17	266631	4453803
CHP0108803		6131 US 68 N	Salem (Township of)	Vernacular	1860	17	266730	4453411
CHP0108903		6080 US 68 N	Salem (Township of)	Vernacular	1894	17	266573	4453348
CHP0109003		5867 US 68 N	Salem (Township of)	Italianate	1860	17	266685	4452955
CHP0109103		74 Short Game Farm Rd	Salem (Township of)	Vernacular	1900	17	266721	4452673
CHP0109203		264 Lippincott Rd	Salem (Township of)	Vernacular	1858	17	266027	4452659
CHP0109303		264 Lippincott Rd (rear)	Salem (Township of)	Vernacular	1810	17	266007	4452655
CHP0109403		491 Lippincott Rd	Salem (Township of)	Vernacular	1894	17	265550	4452482
CHP0109503		642 Lippincott Rd	Salem (Township of)	Vernacular	1894	17	265243	4452590
CHP0109603	Kuss Family House	5515 US 68 N	Salem (Township of)	Italianate	1880	17	266612	4452413
CHP0109703	Kuss Family House	5515 US 68 N	Salem (Township of)	Vernacular	1830	17	266626	4452419
CHP0109803	Rosalie Kuss House	5400 US 68 N	Salem (Township of)	Vernacular	1894	17	266422	4452271
CHP0109903		5138 US 68 N	Salem (Township of)	Vernacular	1880	17	266479	4451810
CHP0110003	Oak Manor	5121 US 68 N	Salem (Township of)	Vernacular	1870	17	266578	4451765
CHP0110103		5015 US 68 N	Salem (Township of)	Vernacular	1880	17	266545	4451599
CHP0110203		261 Sonander Rd	Salem (Township of)	Vernacular	1894	17	265863	4451378
CHP0110303		408 Sonander Rd	Salem (Township of)	Vernacular	1894	17	265651	4451707
CHP0110403	Todd Brown House	4861 US 68 N	Salem (Township of)	Vernacular	1860	17	266527	4451355
CHP0110503	Todd & Michelle Cordell House	4788 US 68 N	Salem (Township of)	Vernacular	1810	17	266408	4451226
CHP0110603		4699 US 68 N	Salem (Township of)	Vernacular	1910	17	266468	4451109
CHP0110703		4609 US 68 N	Salem (Township of)	Vernacular	1860	17	266480	4450969
CHP0110803	Joe & Dana Smith House	4522 US 68 N	Salem (Township of)	Vernacular	1857	17	266378	4450863
CHP0110903		4481 US 68 N	Salem (Township of)	Vernacular	1880	17	266457	4450774
CHP0111003	Robert McClure House	4428 US 68 N	Salem (Township of)	Vernacular	1850	17	266042	4450681
CHP0111103	Martin Donnell House	4416 US 68 N	Salem (Township of)	Vernacular	1870	17	266351	4450654
CHP0111203		4264 US 68 N	Salem (Township of)	Vernacular	1830	17	266332	4450434
CHP0111303	Mayflower Farm	4121 US 68 N	Salem (Township of)	Greek Revival	1840	17	266377	4450243
CHP0111403		441 W Herr Rd	Salem (Township of)	Vernacular	1894	17	265448	4450077
CHP0111503	The B Farm	578 W Herr Rd	Salem (Township of)	Vernacular	1894	17	265125	4450202
CHP0111603	Richard McCullough House	3730 US 68 N	Salem (Township of)	Vernacular	1840	17	266146	4449548
CHP0111703	Mark Dike House	3389 US 68 N	Salem (Township of)	Vernacular	1848	17	266216	4449037
CHP0111803	Woodruff Farm	3318 US 68 N	Salem (Township of)	Italianate	1870	17	266131	4448895
CHP0111903	Stanley Taylor House	603 W SR 296	Salem (Township of)	Vernacular	1872	17	264954	4448298
CHP0112003	John Lowry House	724 W SR 296	Salem (Township of)	Vernacular	1874	17	264732	4448575
CHP0112103	Powell Farm	US 68 N & W SR 296	Salem (Township of)	Vernacular	1860	17	266040	4448349
CHP0112203	George Rothgeh House	2989 US 68 N	Salem (Township of)	Vernacular	1938	17	266149	4448368
CHP0112303	Roland Ward House	2873 US 68 N	Salem (Township of)	Vernacular	1870	17	266178	4448115
CHP0112403	Hickory Hill Farm	2647 US 68 N	Salem (Township of)	Vernacular	1870	17	266130	4447707
CHP0112503	Freshwater Farms of Ohio	2624 US 68 N	Salem (Township of)	Vernacular	1900	17	265992	4447621
CHP0112603		2550 US 68 N	Salem (Township of)	Vernacular	1800	17	265908	4447524
CHP0112703		2399 US 68 N	Salem (Township of)	Vernacular	1860	17	266187	4447166
CHP0112803	Merlin Woodruff House	2017 Clark Rd	Salem (Township of)	Craftsman/Arts and Crafts	1830	17	267102	4446337
CHP0112903	Erie Railroad	NW of Urbana	Salem (Township of)		1864	17	269789	4449972
CHP0113003	Chub & Margaret Kite House	1000 Jackson Hill Rd	Salem (Township of)	Vernacular	1864	17	267498	4445820
CHP0113103		1159 Jackson Hill Rd	Salem (Township of)		1874	17	267765	4445841
CHP0113203		1245 Jackson Hill Rd	Salem (Township of)	Vernacular	1860	17	267865	4445794
CHP0113303		NE of 1362 N Dugan Rd	Salem (Township of)	Vernacular	1895	17	268921	4445093
CHP0113403		1362 N Dugan Rd	Salem (Township of)	Vernacular	1890	17	268842	4444929
CHP0113510		2397 SR 54	Urbana (Township of)	Vernacular	1870	17	266745	4438816
CHP0113610	Urbana Local School	2468 SR 54	Urbana (Township of)	Colonial Revival	1916	17	266634	4438596
CHP0113710	Mike & Lori Sexton House	1535 E Hickory Grove Rd	Urbana (Township of)	Vernacular	1880	17	266623	4438516
CHP0113810	Oscar Woods House	1272 E Hickory Grove Rd	Urbana (Township of)	Vernacular	1900	17	266129	4438651

OHI #	Present Name	Address	Placename	ArchStyle1	Date	Zone	Easting	Northing
CHP0113910		1066 E Hickory Grove Rd	Urbana (Township of)	Vernacular	1870	17	265695	4438734
CHP0114703	Carroll Edward Dennis House	742 W Herr Rd	Salem (Township of)	Vernacular	1895	17	264776	4450214
CHP0114803	Todd R Dallas House	4304 Ridge Rd	Salem (Township of)	Vernacular	1895	17	264672	4450672
CHP0114903	Glenna Bishop House	4497 Ridge Rd	Salem (Township of)	Vernacular	1895	17	264888	4450952
CHP0115003	Bill McKeever House	4605 Ridge Rd	Salem (Township of)	Vernacular	1895	17	264771	4451145
CHP0115103	Eugene & Janet Anderson House	4756 Ridge Rd	Salem (Township of)	Vernacular	1895	17	264755	4451392
CHP0115203	Paul A Kites House	4880 Ridge Rd	Salem (Township of)	Vernacular	1895	17	264757	4451594
CHP0115303	Michael & Linda Miller House	601 Sonander Rd	Salem (Township of)	Vernacular	1910	17	265230	4451678
CHP0115911	Belford Garage	438 Scioto St (rear)	Urbana	Tudor/English Revival	1890	17	265929	4443184
CHP0116111		233 E Water St	Urbana	Not Discernable from OHI Form	1860	17	265594	4442896
CHP0116211		117 E Reynolds St	Urbana	Italianate	1880	17	265409	4442794
CHP0116311		445 Boyce St	Urbana	Gothic Revival	1860	17	266066	4443956
CHP0116411		421 Boyce St	Urbana	Italianate	1865	17	265991	4443966
CHP0116511		126 E Reynolds St	Urbana		1890	17	265443	4442833
CHP0116611		122 E Reynolds St	Urbana	Gothic Revival	1880	17	265427	4442834
CHP0116711		436 Boyce St	Urbana	Italianate	1880	17	266046	4444010
CHP0116811		319 Boyce St	Urbana	Vernacular	1870	17	265821	4443981
CHP0116911		126 Lafayette Ave	Urbana	Not Discernable from OHI Form	1895	17	265553	4443813
CHP0117011	Dayton Power & Light Office	114 N Main St	Urbana	Italianate	1870	17	265377	4443261
CHP0117111		311 Boyce St	Urbana	Gothic Revival	1875	17	265791	4443983
CHP0117211	Urbana Junior High School	500 Washington Ave	Urbana	Jacobethian	1900	17	266247	4443695
CHP0117311		763 N Main St	Urbana	Colonial Revival	1890	17	265582	4444180
CHP0117411		613 Boyce St	Urbana	Italian Villa	1870	17	266365	4443915
CHP0117511		310 Boyce St	Urbana	Italianate	1870	17	265795	4444035
CHP0117611		444 Boyce St	Urbana	Italianate	1875	17	266068	4444009
CHP0117711		112 E Reynolds St	Urbana	Vernacular	1885	17	265396	4442836
CHP0117811		129 E Water St	Urbana	Italianate	1885	17	265451	4442912
CHP0117911		131 E Reynolds St	Urbana	Vernacular	1890	17	265446	4442792
CHP0118011		125 E Reynolds St	Urbana	Vernacular	1880	17	265424	4442794
CHP0118111		135 Lafayette Ave	Urbana	Vernacular	1890	17	265579	4443762
CHP0118211		524 Scioto St	Urbana	Chateausque	1890	17	266135	4443134
CHP0118311		133 E Reynolds St	Urbana	Gothic Revival	1875	17	265457	4442791
CHP0118411		223 College St	Urbana	Colonial Revival	1900	17	265105	4442664
CHP0118511		304 Boyce St	Urbana	Greek Revival	1860	17	265777	4444036
CHP0118611		625 Boyce St	Urbana	Vernacular	1885	17	266400	4443911
CHP0118711		501 Boyce St	Urbana	Vernacular	1890	17	266107	4443952
CHP0118811		220 Boyce St	Urbana	Vernacular	1880	17	265696	4444044
CHP0118911		209 Boyce St	Urbana	Vernacular	1880	17	265660	4443997
CHP0119011		520 Boyce St	Urbana	Gothic Revival	1875	17	266164	4443998
CHP0119111	This & That Shop	321 N Main St	Urbana	Second Empire/Mansard	1881	17	265447	4443509
CHP0119211		831 N Main St	Urbana	Italianate	1870	17	265604	4444300
CHP0119311		824 N Main St	Urbana	Vernacular	1880	17	265546	4444278
CHP0119411		216 Boyce St	Urbana	Vernacular	1875	17	265680	4444045
CHP0119511		827 N Oakland St	Urbana	Vernacular	1880	17	264447	4444283
CHP0119611	Stone Bridge	US 68 & Boyce St	Urbana		1897	17	265528	4443962
CHP0119711		1006 S Main St	Urbana	Gothic Revival	1860	17	265201	4441792
CHP0119811		912 S Main St	Urbana	Queen Anne	1880	17	265218	4441919
CHP0119911		300 E Market St	Urbana	Greek Revival	1855	17	265661	4443059
CHP0120011		1029 S Main St	Urbana	Queen Anne	1890	17	265256	4441722
CHP0120114	Dr Ream House	4 High St	Mechanicsburg	Queen Anne	1890	17	281770	4439046
CHP0120214	Dohron Wilson Elem School	60 High St	Mechanicsburg	Romanesque Revival	1894	17	281821	4439127
CHP0120510	Tolliver House	133 Cherry Ln	Urbana	Vernacular	1865	17	265319	4441558
CHP0120611	McConnell House	596 E Court St	Urbana	Craftsman/Arts and Crafts	1925	17	266357	4443229
CHP0120711	Stocksdale Double	203-203 1/2 E Lawn Ave	Urbana	Stick	1900	17	266401	4443222
CHP0120811	Purk Residence	560 E Lawn Ave	Urbana	Italianate	ca. 1914	17	266410	4443762

OHI #	Present Name	Address	Placename	ArchStyle1	Date	Zone	Easting	Northing
CHP0120911	Champaign County Historical Museum	809 E Lawn Ave	Urbana	Craftsman/Arts and Crafts	c.1912	17	266596	4444126
CHP0126905	Thomas Joseph Carey House	92 S SR 559	Rush (Township of)	Federal	1819	17	284464	4446334
CHP0127005	Douglas & Rorie Dingey House	9022 E US 36	Rush (Township of)	No academic style - Vernacular	ca. 1858	17	280939	4445630
CHP0127112	Janet M. Dye Commercial Building	5844 E SR 29	Mutual	Italianate	ca. 1875-1900	17	274920	4439652
CHP0127212	Mutual Grace United Methodist Church	5744 E SR 29	Mutual	No academic style - Vernacular	1881	17	274758	4439744
CHP0128105	Butcher Cemetery	Tallman St	North Lewisburg		1846	17	281888	4455516
CHP0128213	Negley Residence	12444 SR 4	Goshen (Township of)	No academic style - Vernacular	1832?	17	286038	4443560
CHP0128310	Runyan Farm House	3095 Sloan Rd	Urbana (Township of)	Italianate	ca. 1870	17	270054	4439764
LOG0047714		7026 CR 44	Zane (Township of)	Greek Revival	1850	17	277003	4456860
MAD0008801	Van Ness Road Bridge	TR 140 over Little Darby Creek	Pike (Township of)		1930	17	287020	4441820
UNI0020911	Elmwood Place	23855 SR 161	Irwin	Italianate	1864	17	288300	4443773
UNI0031311	Bates Road Bridge	CR 84 over Little Darby Creek	Union (Township of)		1931	17	289547	4443233
UNI0031611	Irwin Bridge	off SR 161 over Treacle Creek	Union (Township of)		1891	17	287627	4444734
UNI0049511	Purdy Property	23740 SR 161	Union (Township of)	No academic style - Vernacular	ca. 1870	17	288547	4443711

Table 3. Ohio Archaeological Inventory Sites within 5.0 miles (8.0 km) of Direct APE.

OAI #	Site Name	Affiliation	Temporal Components	Zone	Easting	Northing
CH0010	Urbana Kame	Prehistoric	Late Archaic	17	262749	4442976
CH0011	Hodge Mound II (Carl Potter Mound)	Prehistoric	Unknown Woodland	17	278098	4435042
CH0012	Champaign Co. Children's Home Site	Prehistoric	Late Archaic	17	266340	4443756
CH0018	Basil Sidders Kame	Prehistoric	Late Archaic	17	267710	4449877
CH0020	Kent Camp II	Prehistoric	Unknown Prehistoric	17	274854	4457075
CH0021		Prehistoric	Unknown Prehistoric	17	271994	4457472
CH0023	Maple Grove Cemetery Site	Prehistoric	Late Archaic	17	281256	4437758
CH0024		Prehistoric	Unknown Prehistoric	17	265482	4441796
CH0025	Muzzy's Lake Site	Prehistoric	Late Archaic	17	262749	4442976
CH0036		Prehistoric	Middle Archaic, Late Archaic	17	279837	4450309
CH0037		Prehistoric	Unknown Prehistoric	17	266846	4444357
CH0040		Prehistoric	Unknown Prehistoric	17	270394	4441614
CH0041		Prehistoric	Unknown Prehistoric	17	270487	4441605
CH0045	Hodge Mound I	Prehistoric	Unknown Woodland	17	278115	4435711
CH0046	Hodge Mound III	Prehistoric	Unknown Woodland	17	277047	4435912
CH0049		Prehistoric	Unknown Prehistoric	17	281725	4454650
CH0050		Prehistoric	Unknown Prehistoric	17	281805	4454690
CH0051		Prehistoric	Unknown Prehistoric	17	281860	4454720
CH0052		Historic	Historic	17	263920	4443785
CH0053		Prehistoric	Unknown Prehistoric	17	264290	4444446
CH0054		Historic	Historic	17	264295	4444572
CH0077		Prehistoric and Historic	Unknown Prehistoric, Historic	17	263533	4441899
CH0078		Prehistoric	Unknown Prehistoric	17	263305	4443196
CH0079		Prehistoric	Unknown Prehistoric	17	263390	4443251
CH0080		Prehistoric	Unknown Prehistoric	17	263267	4443279
CH0081		Historic	Historic	17	263499	4443504
CH0082		Prehistoric	Early Woodland	17	263810	4444412
CH0083		Prehistoric	Unknown Prehistoric	17	263730	4444565
CH0084		Prehistoric	Unknown Prehistoric	17	263793	4444242
CH0085		Prehistoric	Unknown Prehistoric	17	264345	4445750
CH0086		Prehistoric	Unknown Prehistoric	17	265798	4448632
CH0087		Prehistoric	Unknown Prehistoric	17	265800	4448720
CH0088		Prehistoric	Unknown Prehistoric	17	265659	4448715
CH0089		Prehistoric	Unknown Prehistoric	17	265451	4448816
CH0090		Prehistoric	Unknown Prehistoric	17	266030	4448780
CH0091		Prehistoric	Unknown Prehistoric	17	266050	4448890
CH0092		Prehistoric	Unknown Prehistoric	17	265789	4448887
CH0093		Prehistoric	Unknown Prehistoric	17	265685	4448961
CH0094		Prehistoric	Unknown Prehistoric	17	266030	4448920
CH0095		Prehistoric	Unknown Prehistoric	17	266040	4449000
CH0098		Prehistoric	Unknown Prehistoric	17	263280	4443482
CH0099		Prehistoric and Historic	Unknown Prehistoric, Historic	17	264286	4445215
CH0100		Prehistoric	Late Archaic	17	264925	4448780
CH0101		Prehistoric	Unknown Prehistoric	17	264856	4448713
CH0102		Prehistoric	Unknown Prehistoric	17	264878	4448794
CH0103		Prehistoric	Unknown Prehistoric	17	264928	4448820
CH0104		Prehistoric	Unknown Prehistoric	17	264870	4448856
CH0105		Prehistoric	Unknown Prehistoric	17	264772	4448650
CH0106		Prehistoric	Paleolithic	17	264778	4448590
CH0107		Prehistoric	Unknown Prehistoric	17	264867	4448077
CH0108		Prehistoric	Unknown Prehistoric	17	264986	4447990
CH0109		Prehistoric	Early Archaic, Late Archaic	17	265096	4447717
CH0110		Prehistoric	Unknown Prehistoric	17	265119	4447797
CH0111		Prehistoric	Unknown Prehistoric	17	265367	4448129
CH0112		Prehistoric	Late Archaic	17	265426	4447852
CH0113		Prehistoric	Unknown Prehistoric	17	265446	4448042
CH0114		Prehistoric	Unknown Prehistoric	17	265560	4447989
CH0115		Prehistoric	Unknown Prehistoric	17	265515	4447980
CH0116		Prehistoric	Early Archaic	17	265252	4447960
CH0117		Prehistoric	Unknown Prehistoric	17	265266	4448096
CH0118		Prehistoric	Unknown Prehistoric	17	265165	4448473
CH0119		Prehistoric	Unknown Prehistoric	17	265297	4448467
CH0120		Prehistoric	Unknown Prehistoric	17	265583	4448440
CH0121		Prehistoric	Unknown Prehistoric	17	265560	4448363
CH0122		Prehistoric	Unknown Prehistoric	17	265303	4448359
CH0123		Prehistoric	Unknown Prehistoric	17	263760	4445120
CH0124		Prehistoric	Unknown Prehistoric	17	265131	4447510

OAI #	Site Name	Affiliation	Temporal Components	Zone	Easting	Northing
CH0125		Prehistoric	Unknown Prehistoric	17	265214	4447465
CH0126		Prehistoric	Unknown Prehistoric	17	265122	4447557
CH0127		Prehistoric	Unknown Prehistoric	17	265293	4447595
CH0128		Prehistoric	Unknown Prehistoric	17	265786	4449480
CH0129		Historic	Historic	17	265515	4447886
CH0130		Prehistoric	Unknown Prehistoric	17	265581	4447815
CH0131		Prehistoric	Unknown Prehistoric	17	265611	4447671
CH0132		Prehistoric	Unknown Prehistoric	17	265699	4447788
CH0133		Prehistoric	Unknown Prehistoric	17	265642	4447829
CH0134		Prehistoric	Unknown Prehistoric	17	265737	4447854
CH0135		Prehistoric	Unknown Prehistoric	17	265813	4447968
CH0136		Prehistoric	Unknown Prehistoric	17	265888	4447782
CH0137		Prehistoric	Unknown Prehistoric	17	266060	4448270
CH0138		Prehistoric	Unknown Prehistoric	17	265674	4450623
CH0139		Historic	Historic	17	265619	4450554
CH0140		Prehistoric	Unknown Prehistoric	17	265581	4450592
CH0141		Prehistoric	Unknown Prehistoric	17	265435	4450609
CH0142		Prehistoric and Historic	Late Archaic, Historic	17	265514	4450604
CH0143		Prehistoric	Unknown Prehistoric	17	265304	4451532
CH0144		Prehistoric	Unknown Prehistoric	17	265370	4451479
CH0145		Prehistoric	Unknown Prehistoric	17	265418	4451009
CH0146		Prehistoric	Unknown Prehistoric	17	265852	4451183
CH0147		Prehistoric	Unknown Prehistoric	17	266021	4451041
CH0148		Prehistoric	Unknown Prehistoric	17	265658	4450795
CH0149		Prehistoric	Unknown Prehistoric	17	266089	4451610
CH0150		Prehistoric	Unknown Prehistoric	17	265354	4451860
CH0151		Prehistoric	Unknown Prehistoric	17	265449	4452451
CH0152		Prehistoric	Unknown Prehistoric	17	265415	4452370
CH0153		Prehistoric	Unknown Prehistoric	17	265504	4452320
CH0154		Prehistoric	Unknown Prehistoric	17	266779	4452580
CH0155		Prehistoric	Late Archaic	17	266747	4452425
CH0156		Prehistoric	Late Archaic	17	265985	4452930
CH0157		Prehistoric	Unknown Prehistoric	17	266419	4452931
CH0158		Historic	Historic	17	265861	4453102
CH0159		Prehistoric	Unknown Prehistoric	17	265721	4453068
CH0160		Prehistoric	Late Woodland, Late Prehistoric	17	265500	4453210
CH0161		Prehistoric	Unknown Prehistoric	17	265569	4453287
CH0162		Prehistoric	Unknown Prehistoric	17	266393	4453580
CH0163		Prehistoric	Unknown Prehistoric	17	266521	4453245
CH0164		Prehistoric	Unknown Prehistoric	17	266498	4453292
CH0165		Prehistoric	Late Archaic	17	266380	4453300
CH0166		Prehistoric	Unknown Prehistoric	17	266050	4453470
CH0167		Prehistoric	Unknown Prehistoric	17	265748	4453480
CH0168		Historic	Historic	17	266729	4454077
CH0169		Prehistoric	Unknown Prehistoric	17	266596	4454300
CH0170		Historic	Historic	17	265988	4454596
CH0171		Prehistoric	Unknown Prehistoric	17	266241	4455178
CH0172		Prehistoric	Early Woodland	17	266041	4455069
CH0173		Historic	Historic	17	265809	4455904
CH0174		Historic	Historic	17	266882	4454644
CH0175		Historic	Historic	17	266822	4454319
CH0176		Prehistoric	Early Woodland	17	266898	4454140
CH0177		Prehistoric	Unknown Prehistoric	17	262990	4444030
CH0178		Prehistoric	Unknown Prehistoric	17	263206	4444688
CH0179		Prehistoric	Unknown Prehistoric	17	264223	4450612
CH0180	Unnamed Mound Group	Prehistoric	Unknown Woodland	17	263943	4450593
CH0181		Prehistoric	Unknown Prehistoric	17	262822	4445163
CH0182		Prehistoric	Late Archaic	17	262788	4444987
CH0183		Prehistoric	Unknown Prehistoric	17	262944	4444996
CH0184		Prehistoric	Unknown Prehistoric	17	264334	4451701
CH0185		Prehistoric	Unknown Prehistoric	17	264260	4451730
CH0186		Prehistoric	Unknown Prehistoric	17	264331	4451757
CH0187		Prehistoric	Unknown Prehistoric	17	264435	4451725
CH0188		Prehistoric	Unknown Prehistoric	17	264519	4452303
CH0192		Prehistoric	Early Archaic	17	266256	4438551
CH0193		Prehistoric	Late Archaic	17	266226	4438297
CH0194		Prehistoric	Unknown Prehistoric	17	266643	4438927
CH0195		Prehistoric	Unknown Prehistoric	17	266567	4438830
CH0196		Prehistoric	Unknown Prehistoric	17	267643	4439670

OAI #	Site Name	Affiliation	Temporal Components	Zone	Easting	Northing
CH0197		Historic	Historic	17	267569	4439724
CH0198		Historic	Historic	17	265957	4438380
CH0199		Historic	Historic	17	267707	4439872
CH0200		Prehistoric	Unknown Prehistoric	17	267920	4440809
CH0201		Prehistoric and Historic	Unknown Prehistoric, Historic	17	268488	4440675
CH0202		Prehistoric and Historic	Unknown Prehistoric, Historic	17	268439	4440552
CH0203		Historic	Historic	17	268709	4440568
CH0204		Historic	Historic	17	269185	4440714
CH0205		Prehistoric	Unknown Prehistoric	17	269397	4441144
CH0206		Prehistoric	Late Archaic, Unknown Woodland	17	269254	4441635
CH0207		Prehistoric	Unknown Prehistoric	17	270078	4440779
CH0208		Prehistoric	Unknown Prehistoric	17	269920	4440730
CH0209		Prehistoric	Unknown Prehistoric	17	269500	4441179
CH0210		Prehistoric	Unknown Prehistoric	17	270010	4441723
CH0211		Historic	Historic	17	270279	4442948
CH0212		Prehistoric	Unknown Prehistoric	17	270151	4442875
CH0213		Prehistoric	Late Archaic	17	270420	4442624
CH0214		Historic	Historic	17	270065	4442454
CH0215		Prehistoric	Unknown Prehistoric	17	270290	4442551
CH0220		Prehistoric	Middle Archaic, Late Archaic	17	263140	4442180
CH0224		Prehistoric	Late Archaic	17	270162	4441992
CH0225		Historic	Historic	17	263618	4442440
CH0226		Prehistoric	Unknown Prehistoric	17	263540	4442449
CH0228		Historic	Historic	17	263509	4442412
CH0231		Prehistoric	Unknown Prehistoric	17	262841	4443092
CH0237		Prehistoric	Middle Woodland	17	263546	4449191
CH0241		Prehistoric and Historic	Unknown Prehistoric, Historic	17	266640	4439376
CH0242		Prehistoric	Unknown Prehistoric	17	266746	4439562
CH0243		Historic	Historic	17	266665	4439675
CH0244		Prehistoric	Unknown Prehistoric	17	266921	4439803
CH0245		Prehistoric	Unknown Prehistoric	17	267115	4439797
CH0246		Historic	Historic	17	267555	4440124
CH0247		Prehistoric	Unknown Prehistoric	17	268270	4440108
CH0248		Prehistoric	Unknown Prehistoric	17	268239	4440234
CH0249		Historic	Historic	17	269813	4441783
CH0250		Historic	Historic	17	269271	4442967
CH0251		Prehistoric and Historic	Unknown Prehistoric, Historic	17	269150	4442935
CH0252		Prehistoric	Unknown Prehistoric	17	269210	4442750
CH0253		Prehistoric	Unknown Prehistoric	17	262973	4444205
CH0254		Prehistoric	Unknown Prehistoric	17	263170	4444370
CH0255		Prehistoric	Unknown Prehistoric	17	263016	4444452
CH0256		Prehistoric	Unknown Prehistoric	17	262750	4444565
CH0257		Prehistoric	Late Archaic	17	262729	4444408
CH0258		Prehistoric	Unknown Prehistoric	17	262860	4444170
CH0259		Prehistoric and Historic	Unknown Prehistoric, Historic	17	266148	4448992
CH0260		Historic	Historic	17	263955	4445769
CH0261		Historic	Historic	17	263472	4443247
CH0262		Historic	Historic	17	263835	4445327
CH0263		Historic	Historic	17	264050	4445080
CH0265		Prehistoric	Unknown Prehistoric	17	265679	4449080
CH0266		Historic	Historic	17	265468	4449502
CH0267		Historic	Historic	17	265519	4449495
CH0268		Prehistoric	Unknown Prehistoric	17	265403	4447690
CH0269		Prehistoric	Unknown Prehistoric	17	265313	4447736
CH0270		Prehistoric	Unknown Prehistoric	17	265243	4447846
CH0271		Prehistoric	Unknown Prehistoric	17	266354	4447153
CH0272		Historic	Historic	17	266240	4447227
CH0273		Prehistoric	Unknown Prehistoric	17	266330	4447260
CH0274		Historic	Historic	17	265243	4449338
CH0275		Prehistoric	Unknown Prehistoric	17	265256	4449453
CH0276		Prehistoric	Unknown Prehistoric	17	265144	4449492
CH0277		Prehistoric	Unknown Prehistoric	17	266110	4447299
CH0278		Historic	Historic	17	265273	4448541
CH0279		Prehistoric	Unknown Prehistoric	17	265437	4449914
CH0280		Prehistoric	Unknown Prehistoric	17	265503	4447302
CH0281		Prehistoric	Unknown Prehistoric	17	265581	4447480
CH0282		Prehistoric	Unknown Prehistoric	17	265561	4447384
CH0283		Historic	Historic	17	265661	4447354
CH0284		Unknown	Unknown	17	265537	4447337

OAI #	Site Name	Affiliation	Temporal Components	Zone	Easting	Northing
CH0285		Prehistoric	Unknown Prehistoric	17	266269	4450397
CH0286		Prehistoric	Unknown Prehistoric	17	265302	4450437
CH0287		Prehistoric	Unknown Prehistoric	17	265437	4450475
CH0288		Historic	Historic	17	265718	4452522
CH0289		Prehistoric	Unknown Prehistoric	17	265532	4452582
CH0290		Prehistoric	Unknown Prehistoric	17	265829	4451540
CH0291		Prehistoric	Unknown Prehistoric	17	265763	4451472
CH0292		Historic	Historic	17	265673	4452092
CH0293		Unknown	Unknown	17	265532	4451990
CH0294		Prehistoric	Unknown Prehistoric	17	265416	4452036
CH0295		Prehistoric	Unknown Prehistoric	17	265666	4452750
CH0296		Prehistoric	Unknown Prehistoric	17	265566	4452715
CH0297		Prehistoric	Unknown Prehistoric	17	265821	4453660
CH0298		Historic	Historic	17	266189	4454772
CH0299		Historic	Historic	17	266425	4454901
CH0300		Historic	Historic	17	266592	4455131
CH0301		Prehistoric	Unknown Prehistoric	17	266497	4454962
CH0302		Prehistoric	Unknown Prehistoric	17	264784	4453790
CH0303		Prehistoric	Unknown Prehistoric	17	265593	4447611
CH0304		Historic	Historic	17	266393	4446787
CH0305		Prehistoric	Unknown Prehistoric	17	266649	4446288
CH0306		Historic	Historic	17	266416	4446667
CH0307		Prehistoric	Unknown Prehistoric	17	266460	4446627
CH0308		Prehistoric	Unknown Prehistoric	17	266569	4446510
CH0309		Prehistoric	Unknown Prehistoric	17	262592	4444762
CH0310		Prehistoric	Unknown Prehistoric	17	262715	4445578
CH0313		Historic	Historic	17	262671	4444790
CH0314		Historic	Historic	17	262692	4444724
CH0315		Prehistoric	Unknown Prehistoric	17	262660	4445200
CH0316		Prehistoric and Historic	Unknown Prehistoric, Historic	17	262649	4445450
CH0317		Prehistoric	Unknown Prehistoric	17	263680	4449110
CH0318		Prehistoric	Unknown Prehistoric	17	263846	4449290
CH0319		Prehistoric	Early Archaic	17	264093	4449505
CH0325		Prehistoric	Late Archaic	17	265468	4451498
CH0326		Prehistoric	Unknown Prehistoric	17	265486	4452441
CH0327		Prehistoric	Unknown Prehistoric	17	264103	4450459
CH0328		Historic	Historic	17	264254	4450309
CH0329		Historic	Historic	17	263998	4451602
CH0330		Prehistoric	Unknown Prehistoric	17	264656	4453461
CH0331		Prehistoric	Unknown Prehistoric	17	269815	4442947
CH0332		Prehistoric	Unknown Prehistoric	17	270090	4442984
CH0333		Prehistoric	Unknown Prehistoric	17	269956	4442940
CH0334		Prehistoric	Unknown Prehistoric	17	269987	4442586
CH0335		Prehistoric	Unknown Prehistoric	17	269241	4442796
CH0336		Historic	Historic	17	269218	4443258
CH0337		Historic	Historic	17	267246	4445772
CH0338		Prehistoric	Unknown Prehistoric	17	267867	4445659
CH0339		Historic	Historic	17	268045	4445003
CH0340		Prehistoric	Unknown Prehistoric	17	269437	4443720
CH0341		Prehistoric	Late Archaic	17	269423	4443602
CH0342		Prehistoric	Unknown Prehistoric	17	269417	4443320
CH0343		Historic	Historic	17	267272	4445651
CH0346	Unnamed Mound Group	Prehistoric	Unknown Woodland	17	267731	4439642
CH0361		Prehistoric	Unknown Prehistoric	17	265022	4454550
CH0366		Prehistoric	Unknown Prehistoric	17	269278	4442722
CH0367		Historic	Historic	17	264635	4450168
CH0368		Prehistoric	Unknown Prehistoric	17	264544	4450089
CH0369		Prehistoric	Unknown Prehistoric	17	264438	4450112
CH0370		Prehistoric	Unknown Prehistoric	17	264595	4449735
CH0371		Prehistoric	Early Archaic	17	264509	4449677
CH0372		Prehistoric	Unknown Prehistoric	17	264628	4449479
CH0373		Prehistoric	Unknown Prehistoric	17	264565	4450560
CH0374		Prehistoric	Late Archaic	17	264520	4450810
CH0375		Prehistoric	Unknown Prehistoric	17	264429	4451056
CH0376		Prehistoric	Unknown Prehistoric	17	264608	4451360
CH0377		Prehistoric	Unknown Prehistoric	17	264690	4451850
CH0378		Prehistoric	Late Archaic, Unknown Woodland	17	265404	4451335
CH0379		Prehistoric	Unknown Prehistoric	17	265518	4451191
CH0380		Prehistoric	Unknown Prehistoric	17	265430	4450896

OAI #	Site Name	Affiliation	Temporal Components	Zone	Easting	Northing
CH0381		Prehistoric	Unknown Prehistoric	17	265454	4450746
CH0382		Prehistoric and Historic	Unknown Prehistoric, Historic	17	265206	4450522
CH0383		Prehistoric	Unknown Prehistoric	17	264781	4449925
CH0384		Prehistoric	Unknown Prehistoric	17	264919	4451903
CH0385		Prehistoric	Unknown Prehistoric	17	265131	4451667
CH0386		Prehistoric	Unknown Prehistoric	17	265195	4451607
CH0387		Historic	Historic	17	265163	4451413
CH0388		Prehistoric	Unknown Prehistoric	17	265030	4451418
CH0389		Prehistoric	Unknown Prehistoric	17	264854	4451431
CH0390		Prehistoric	Unknown Prehistoric	17	264932	4451034
CH0398		Prehistoric	Unknown Prehistoric	17	283089	4439968
CH0401		Prehistoric	Paleolithic, Unknown Archaic	17	265894	4447394
CH0402		Prehistoric	Middle Woodland	17	273051	4453327
CH0403		Prehistoric	Unknown Prehistoric	17	279235	4433008
CH0404		Prehistoric	Unknown Prehistoric	17	265960	4446960
CH0405		Prehistoric	Late Archaic	17	265741	4446888
CH0406		Prehistoric	Unknown Prehistoric	17	265615	4446900
CH0407		Prehistoric and Historic	Unknown Prehistoric, Historic	17	265932	4446830
CH0408		Prehistoric	Late Woodland, Late Prehistoric	17	271790	4449700
CH0409		Prehistoric	Unknown Prehistoric	17	280850	4447865
CH0410		Prehistoric	Late Woodland, Late Prehistoric	17	280163	4445757
CH0411		Historic	Historic	17	273293	4444615
CH0412		Historic	Historic	17	276515	4443703
CH0413		Prehistoric	Unknown Prehistoric	17	279732	4440712
CH0414		Prehistoric	Unknown Prehistoric	17	279836	4440396
CH0415		Historic	Historic	17	280044	4440393
CH0416		Prehistoric	Unknown Prehistoric	17	274160	4444415
CH0417		Prehistoric	Middle Woodland	17	276530	4443613
CH0418		Prehistoric	Early Archaic	17	277958	4440349
CH0419		Prehistoric	Unknown Archaic	17	278550	4445595
CH0420		Prehistoric	Unknown Archaic	17	278585	4445545
CH0421		Historic	Historic	17	271909	4448935
LO0036	Kent Camp	Prehistoric	Early Woodland, Middle Woodland	17	274910	4457710
UN0466		Historic	Historic	17	289526	4443269

Table 4. Ohio Genealogical Society Cemeteries within 5.0 miles (8.0 km) of the Direct APE.

OGS ID#	Name	County	Zone	East	North
1494	BRITTON	Champaign	17	283303	4440103
1496	HAZEL	Champaign	17	285571	4443508
1497	MAPLE GROVE	Champaign	17	281176	4437384
1498	MECHANICSBURG MAUSOLEUM	Champaign	17	281211	4437482
1499	MITCHELL	Champaign	17	283892	4434172
1500	TREACLES CREEK	Champaign	17	279946	4444008
1501	UNNAMED #2	Champaign	17	280770	4441826
1502	UNNAMED #1	Champaign	17	282263	4438785
1561	BLACK	Champaign	17	281928	4452273
1562	BUTCHER-GARWOOD-NORTH LEWISBURG-WALNUT GROVE	Champaign	17	281873	4455508
1563	HAINES	Champaign	17	281466	4451989
1565	MAPLE GROVE-SPAIN	Champaign	17	280786	4454989
1566	MARTIN-CRANSTON	Champaign	17	285615	4451628
1568	SODOM-CLARK	Champaign	17	281116	4445668
1569	WOODSTOCK	Champaign	17	283994	4449766
1570	KINGSCREEK BAPTIST-KINGSCREEK	Champaign	17	267738	4449093
1571	KINGSCREEK METHODIST EPISCOPAL	Champaign	17	267091	4449918
1572	LATHAM	Champaign	17	273103	4457216
1573	MENNONITE-OAK GROVE	Champaign	17	270295	4453266
1574	MOUNT CARMEL	Champaign	17	270296	4453268
1575	MOUNT TABOR	Champaign	17	270809	4456418
1577	OLD FRIENDS	Champaign	17	266899	4451456
1581	THOMAS	Champaign	17	271692	4454595
1584	HOPEWELL #1-HOPEWELL	Champaign	17	277839	4434474
1586	MUTUAL-(GRACE)	Champaign	17	274713	4439801
1587	PISGAH	Champaign	17	271760	4437898
1588	SHARON	Champaign	17	274842	4443181
1589	UNION CHAPEL-UNION	Champaign	17	275331	4444087
1590	UNNAMED	Champaign	17	275663	4444944
1591	WHITE	Champaign	17	273255	4441715
1592	WOLFE	Champaign	17	273092	4444149
1595	GEORGES CHAPEL-METHODIST EPISCOPAL	Champaign	17	270403	4441836
1596	GRANDVIEW	Champaign	17	266964	4442261
1597	OAKDALE	Champaign	17	267141	4442399
1598	OLD GRAVEYARD	Champaign	17	265674	4443549
1603	BELTZ	Champaign	17	277126	4455749
1604	CABLE-METHODIST EPISCOPAL	Champaign	17	275934	4449750
1605	CORBETT-(CORBET)	Champaign	17	278489	4450079
1606	FRIEND-MOUNT CARMEL	Champaign	17	272814	4453407
1607	JENKINS CHAPEL-PLEASANT VIEW	Champaign	17	277838	4448114
1608	JOHNSON	Champaign	17	274599	4455286
1609	MEADE-(MEAD)	Champaign	17	277551	4452589
1610	TOWNSEND	Champaign	17	275161	4448779
7150	GUY	Madison	17	289068	4437710
7151	MORSE	Madison	17	290224	4439661
14477	FAIRVIEW	Champaign	17	274591	4439787

REFERENCES CITED

- Addington, James E., and Wesley Clarke
1984 A Phase I/II Archaeological Survey of
Proposed Additions to the Urbana City
Park, Champaign County, Ohio. Ohio
Resource Consultants, Columbus.
- Baker, Stanley W. and Jule A. Kime
1981 Preliminary Cultural Resource Survey of
the Proposed Flood Prevention Project for
Triad High School, Champaign County,
Ohio. Ohio Historical Society, Columbus.
- Beamer, Herb
1992 Literature Review and Archaeological
Survey for the Castle Ridge Subdivision in
North Lewisburg, Rush Township,
Champaign County, Ohio. ASC Group,
Columbus.
- Breetzke, David
2006 Phase I Cultural Resources Report for the
Sprint C170XC087-B (Crowder) Cellular
Tower, Wayne Township, Champaign
County, Ohio. Environment and
Archaeology, LLC, Florence, Kentucky.
- Caldwell, Joseph A.
1875 Caldwell's Atlas of Madison County,
Ohio. J. A. Caldwell, Condit, Ohio.
- Derick, Scott
2012 Short Report Format for the Phase I
Cultural Resources Survey for the UNI-CR
84-0.26 Bridge Replacement Project (PID
83340) Located in Union Township, Union
County, Ohio. EMH&T, Inc., Columbus.
- Everts, L. H.
1875 Illustrated Historical Atlas of Clark
County, Ohio. L. H. Everts & Co.,
Philadelphia.
- Frye, Lori A., and Bruce W. Aument
1988 Phase I And II Cultural Resource Survey:
Proposed Urbana Pole Yard, Champaign
County, Ohio. ASC Group, Columbus.
- Heavrin, Elizabeth G.
2011 Work Plan for Completing An
Architectural Survey for Phase II of the
Proposed Buckeye Wind Farm in
Champaign County, Ohio. Contract
Publication Series WV11-108, Submitted
to EverPower Wind Holdings, Inc.
Prepared by Cultural Resources Analysts,
Inc.
- Heavrin, Elizabeth, Robert C. Whetsell, and Ann
Marie P. Doyon, with contributions by William
Urdike and Tonya Taylor.
2011 Architectural Survey for the Proposed
Buckeye Wind Farm in Champaign
County, Ohio. Contract Publication Series
WV10-045. Cultural Resource Analysts,
Inc., Lexington, Kentucky.
- Heavrin, Elizabeth, Flora Church, James
Kompanek, and Stevan Pullins.
2012 Cultural Resources Records Review For
The Buckeye II Wind Farm, Champaign
County, Ohio Contract Publication Series
WV12-009. Cultural Resource Analysts,
Inc., Hurricane, west Virginia.
- Heavrin, Elizabeth
2013 Addendum to the Architectural Survey
for the Proposed Buckeye Wind Farm in
Champaign County, Ohio. Contract
Publication Series 13-013. Cultural
Resource Analysts, Inc., Lexington,
Kentucky.
- Jackson, Christopher E., K. Coleman, D. Dobson-
Brown, and D. Herr
1996 A Literature Review and Reconnaissance
Survey for the Proposed Edgewood
Avenue Widening and Extension in the
City of Urbana, Champaign County, Ohio.
ASC Group, Columbus.
- Kizer, T.
1859 Clarke County, Ohio Wall Map. J.
Douglas Moler, publisher. Springfield, Ohio.
- Lake, D. J.
1870 Atlas of Clarke County, Ohio. C.O. Titus,
Philadelphia.
- Marysville Map Co.
1908 Union County. Marysville Map Co.,
Marysville, Ohio.
- Mills, William C.
1914 Archaeological Atlas of Ohio. Ohio State
Archaeological and Historical Society.

- Mowry, A. S.
1877 Atlas of Union County, Ohio. Harrison, Sutton, & Hare, Philadelphia.
- Mustain, Chuck
2007 Phase I Archaeological Survey for the Grimes Field Airport Runway Expansion Project in Urbana, Champaign County, Ohio. ASC Group, Columbus.
- Mustain, Chuck, and Nathan Young
1997a Phase I Cultural Resource Management Archaeological Reconnaissance Survey for the U.S. Route 68 Preliminary Development Study Project (CHP-68-2.2446[1.52]) in Concord, Harrison, Mad River, Salem, and Urbana Townships, Champaign County, Ohio (PID 9927). ASC Group, Columbus.
- 1997b Addendum to Phase I Cultural Resource Management Archaeological Reconnaissance Survey for U.S. Route 68 Preliminary Development Study Proj. (CHP-68-2.2446[1.52]) in Concord, Harrison, Mad River, Salem, and Urbana Twps., Champaign Co., Ohio (PID 9927) Appendix E.. ASC Group, Columbus.
- Nelson, Christopher L., and Jamie S. Meece
2011 Phase I Archaeological Survey for the Proposed Buckeye Wind Farm in Champaign County, Ohio. Contract Publication Series WV10-006. Cultural Resource Analysts, Inc., Lexington, Kentucky.
- Pullins, Stevan C., Flora Church, and James H. Kompanek
2012 Work Plan for Completing a Phase I Archaeological Survey for the Proposed Phase II Development of the Buckeye Wind Farm in Champaign County, Ohio. Contract Publication Series WV11-107, Submitted to EverPower Wind Holdings, Inc. Prepared by Cultural Resources Analysts, Inc.
- Rerick Brothers
1894 The County of Clark, Ohio. Rerick Brothers, Richmond, Indiana.
- Riordan, Robert V.
1987 An Archaeological Survey of the Warren Grimes Bikeway in Urbana Township, Champaign County, Ohio.
- Riordan, Robert V., and Michael A. Smolek
1977 An Archaeological Assessment of Two Interceptor Routes for the Urbana Facility Plan.
- Riordan, Robert V., and Terry Villars
1984 An Archaeological Survey of an Urbana, Ohio Storm Sewer Route.
- Starr, J. W., C. E. and J. N. Headington
1874 Atlas of Champaign County, Ohio. 1974 reprint, Unigraphic.
- Tonetti, Alan and Douglas Terpstra
2009 Cultural Resources Literature Review, and Archaeological and Visual Impact Assessment for the Buckeye Wind Facility Project in Champaign County, Ohio. ASC Group, Inc., Columbus, Ohio.
- Walter, Dawn E. and Linda G. Whitman
1999 A Phase II Archaeological Investigation of the CHP-68-2.446 (PID 9927) Project in Concord, Harrison, Mad River, Salem, and Urbana Townships, Champaign County, Ohio. ASC Group, Columbus.
- Watkins, Jason
2004 Phase I Archaeological Investigations for the Proposed Improvements to SR 56 (CHP-56-4.65; PID 75861) Located in Goshen Township, Champaign County, Ohio. Ohio Department of Transportation, Office of Environmental Services, Columbus.
- Weller von Molsdorff, Ryan J.
1997 Phase I Cultural Resource Management Survey for the Proposed 0.6 ha (1.4 a.) Cell Tower and Access Road in Goshen Township, Champaign County, Ohio. Applied Archaeological Services, Columbus.

APPENDIX A. OHIO STATE HISTORIC PRESERVATION OFFICE CORRESPONDENCE



December 21, 2012

Michael Anslinger
Cultural Resources Analysts, Inc.
3556 Teays Valley Road, Suite 3
Hurricane, WV 25526

Re: Buckeye Wind Project - 2, EverPower Wind Farm Development
Case No. 08-666-EL-BGN
Champaign County, Ohio

Dear Mr. Anslinger,

This is in response to correspondence from your office received November 20, 2012, providing work plans for archaeological and architecture-history surveys for the second phase of the wind farm development. The comments of the Ohio Historic Preservation Office (OHPO) are submitted in accordance with provisions of Ohio Revised Code 149.53 requesting cooperation among state agencies in the preservation of historic properties, Ohio Administrative Code 4906-17-08(D1-D3), and with provisions of the National Historic Preservation Act of 1966, as amended (16 U.S.C. 470 [36 CFR 800]).

The work plans are titled:

"Work Plan For Completing A Phase I Archaeological Survey For The Proposed Phase II Development Of The Buckeye Wind Farm in Champaign County, Ohio" by Stevan Pullins; and

"Work Plan For Completing AN Architecture Survey For Phase II Of The Proposed Buckeye Wind Farm In Champaign County, Ohio" by Elizabeth Heavrin.

We agree with the designs proposed for the surveys and have no objection to the initiation of the surveys at any time. Our comments here are not to recommend changes but rather to provide observations and offer guidance.

We support the specific and measured steps laid out in the work plans to seek public input and involve the public in identifying properties and assessing effects (in particular, Heavrin, Page 6).

We do not anticipate that the architecture-history survey will result in the creation of more than a few records. The work plan does a good job of framing the need to continue efforts to recognize significant property types while retaining emphasis on the mitigation measures that are being developed as a result of the survey for the first phase of construction for the wind farm. The perspective of looking to see if there is an additional property type is appropriate. This provides us an opportunity to learn from the results of the survey for the first phase of wind farm construction.

Mr. Michael Anslinger
December 21, 2012
Page 2

The archaeological survey proposes a standard approach. Where there is ground disturbance during wind farm construction the ground disturbance is quite often substantial. However, we see opportunities for flexibility. Archaeologists in the field should have some authority to decrease the level of survey intensity if clearly warranted by conditions. That is, the archaeologists may begin to observe patterns indicating the appropriateness of wider sampling intervals in certain environmental conditions (for instance, see Pullins, Page 20, Modified Survey Procedures).

We believe that the consultation for this undertaking is moving constructively forward, and we encourage you to continue the discussions that have been initiated. Any questions concerning this matter should be addressed to David Snyder at (614) 298-2000, between the hours of 8 am. to 5 pm. Thank you for your cooperation.

Sincerely,

A handwritten signature in cursive script that reads "David Snyder".

David Snyder, Ph.D., Archaeology Reviews Manager
Resource Protection and Review

DMS/ds (OHPO ID 2008-CHP-1487)

APPENDIX B. BUCKEYE AND BUCKEYE II PROGRAMMATIC AGREEMENT

PROGRAMMATIC AGREEMENT (PA)

among

**The U.S. Fish and Wildlife Service (USFWS),
The Ohio Historic Preservation Office (OHPO), and
Buckeye Wind LLC (Buckeye)**

regarding

**Construction of the Buckeye and Buckeye II Wind Power Projects (Projects)
to be located in Champaign County, Ohio**

and

**Mitigation for Take of Indiana Bats
to be implemented in Ohio**

WHEREAS, issuance of an Incidental Take Permit (ITP) by USFWS to Buckeye for incidental take of Indiana bats during construction, operation and decommissioning of the Projects triggers review under Section 106 of the National Historic Preservation Act (NHPA), 16 U.S.C. § 470 *et seq.*, § 470f, and its implementing regulations "Protection of Historic Properties" (36 CFR Part 800) and;

WHEREAS, USFWS has determined that construction of the proposed Projects to be located in Champaign County, Ohio, and implementation of Indiana bat mitigation, to be implemented within Ohio, may potentially cause an adverse effect on historic properties and;

WHEREAS, the proposed Projects will include construction of up to 100 turbines each with a nameplate capacity of 1.6 to 2.5 megawatts (MW) resulting in a total generating capacity of up to 250 MW, and construction of a substation, an operations and maintenance (O&M) building (should it be needed), access roads, staging areas and collection and communications lines, and;

WHEREAS, mitigation required of Buckeye to compensate for the impact of taking Indiana bats during operation of Projects, as described in the Habitat Conservation Plan (HCP) and required pursuant to the ITP, will include the purchase or easement acquisition and subsequent restoration and/or enhancement (if necessary), with permanent preservation, of up to 87.8 ha (217.0 ac) of suitable Indiana bat habitat within 11.2 km (7 mi) of a Priority 2 Indiana bat hibernaculum in Ohio, or purchase credits from a USFWS approved Indiana bat mitigation bank, and;

WHEREAS, USFWS has determined the Area of Potential Effect (APE) for the undertaking will include the project area (direct APE) including up to 100 turbine locations, access roads and buried interconnect lines, construction staging areas, substation, an O&M building, and the substation location; the area within 5.0 miles of the Projects where the Projects may have indirect visual effects to aboveground historic resources (indirect APE); and Indiana bat mitigation sites including approved areas within 11.2 km (7 mi) of a Priority 2 Indiana bat hibernaculum in Ohio, and;

WHEREAS, USFWS, in consultation with OHPO and Buckeye, has completed studies to identify any buildings, structures, non-archaeological districts, and objects meeting the criteria for listing on the National Register of Historic Places (NRHP) within the Projects' indirect APE (Doyon and Heavrin 2010; Heavrin et al. 2011); and

WHEREAS, USFWS, in consultation with the OHPO and Buckeye, has initiated but not completed the studies necessary to identify within the Projects' direct APE any archaeological sites and districts meeting the criteria for listing in the NRHP (Church et al. 2010; Nelson and Meece 2011); and

WHEREAS, USFWS has consulted with the OHPO to address potential effects of the Projects on historic properties in accordance with Section 106 of the NHPA (16 U.S.C. 470) and its implementing regulations, 36 CFR Part 800; and

WHEREAS, it is agreed among the signatories that adverse effects to above ground historic resources in the indirect APE may occur as a result of the Projects, but that no adverse effects to above ground historic resources will occur as a result of the Projects within the direct APE, and;

WHEREAS, USFWS is phasing identification and evaluation of historic properties and application of the criteria of effects in accordance with 36 CFR Part 800.4(b)(2) and 36 CFR Part 800.5(a)(3), respectively, because final siting of project infrastructure and Indiana bat mitigation is not complete and;

WHEREAS, in accordance with 36 CFR Part 800.14(b)(1)(ii), execution of a Programmatic Agreement (PA) is appropriate because effects on historic properties cannot be fully determined prior to USFWS issuance of the ITP to Buckeye; and

WHEREAS, Buckeye has agreed to complete its stipulations, listed below, regarding the identification, evaluation of eligibility and assessment of effects regarding archaeological resources within the direct APE as elaborated below, as a condition of receiving the ITP and;

WHEREAS, the terms used in this PA are defined in 36 CFR Part 800.16;

NOW, THEREFORE, USFWS, OHPO and Buckeye agree that the above-referenced construction and mitigation will be implemented in accordance with the following stipulations in order to take into account the effect of said undertakings on historic properties.

STIPULATIONS

USFWS will ensure that the following stipulations are carried out:

I. CONDITIONS

USFWS will ensure that the terms of this PA within its control are implemented prior to the start of construction and prior to the start of implementation of any Indiana bat mitigation.

II. PROFESSIONAL STANDARDS

The studies and work required under the terms of this PA will be carried out by or under the direct supervision of a professional, hired and paid by Buckeye, who, at a minimum, meets the U.S. Secretary of the Interior's *Professional Qualifications Standards* (48 FR 44716, September 29, 1983) in archeology or architectural history, as appropriate.

III. IDENTIFICATION AND TREATMENT

A. Mitigation of Effects to Above Ground Historic Resources

Previously, Buckeye commissioned an architectural field survey of above ground historic resources (Heavrin et al., 2011). The survey strategy was based on a work plan developed in consultation with USFWS and OHPO (Doyon and Heavrin, 2010). The architectural field survey was completed in 2010 based on the proposed 52 turbine locations established during development of the Buckeye Wind Farm. The survey documented 1,475 individual properties located in the rural areas and crossroads communities of the survey area, and an additional 44 blocks in Mechanicsburg and 283 blocks in Urbana were assessed. Based on the archival research, field survey, and public involvement, it was determined that the agricultural heritage of the survey area is what makes the historic landscape unique and that historic farmsteads and farmhouses, one-room schoolhouses, churches, cemeteries, and crossroads communities are character-defining property types that contribute to one's appreciation of the area's historic landscape. The number and size of the proposed turbines could affect the perception of the traditional rural historic landscape, changing important qualities of the setting in which many of the character-defining historic property types are located.

While the proposed project will not affect any above-ground historic resources in the direct APE, given the presence of known historic properties within the indirect APE, as well as the results of the field survey that suggest the presence of many other likely historic properties and potential historic landscapes within the indirect APE, USFWS has determined that the proposed project will result in an Adverse

Effect to historic properties as defined in 36 CFR Part 800.5. Based on the nature of the proposed project, avoidance or minimization of these indirect impacts is impractical. Consequently, creative mitigation measures will be employed in order to promote the continued preservation and meaningfulness of the survey area's rural history. As outlined in their letter of October 27, 2011, OHPO concurs with this finding and supports such a mitigation approach. Given the landscape level approach employed for the architectural survey, the Buckeye Wind Farm findings of the project were anticipated to be applicable to Buckeye II Wind Farm.

A supplementary field survey was completed in 2013 to take into consideration the proposed Buckeye II Wind Farm turbine locations. The survey strategy and methods were based on a work plan developed in consultation with USFWS and OHPO (Heavrin 2011). The survey confirmed that the findings of the Buckeye Wind Farm survey are applicable to the Projects (Heavrin 2013).

To address the Indirect Adverse Effect of the Projects, Buckeye will hire and pay a professionally qualified historian or architectural historian to complete the two following mitigation projects, as approved by USFWS and OHPO:

- a. Development of a National Register of Historic Places Multiple Property Listing for historic one-room schoolhouses in Champaign County, Ohio, including completion of a Multiple Property Documentation Form (MPDF) and one individual nomination of a schoolhouse.
- b. Development of a Teaching with Historic Places (TwHP) Lesson Plan focusing on the history of the Underground Railroad in Champaign County, Ohio.

Once completed, the Multiple Property Listing and Teaching with Historic Places Lesson Plan shall be submitted to the USFWS and OHPO for review and comment and shared with the public according to the methods outlined in the mitigation plan.

Work on both the mitigation projects will begin no later than the first delivery of a turbine generator to the project area. Buckeye will submit draft copies of all reports to the OHPO Resource Protection and Review Department for review within 12 months of this date. OHPO will provide comments on the draft reports within 2 months of receiving them from Buckeye. Buckeye will revise the reports in response to any comments received from OHPO and submit final draft reports within 2 months of receiving comments. OHPO will provide final comments on the reports within 1 month of receiving the final draft reports from Buckeye. Buckeye will submit final reports, including all supporting documentation, to OHPO and the USFWS within 1 month of receiving OHPO's final comments, which will be within 18 months of commencement of work on the mitigation projects. All signatories of the PA shall be informed of any anticipated deviations from this review schedule. As outlined in the mitigation plan, coordination with OHPO's Inventory and Registration Department to list the MPDF and

individual nomination in the NRHP will occur concurrently with review by the Resource Protection and Review Department. While acceptance of the reports by the Resource Protection and Review Department is expected to take no more than 18 months, additional time may be required to complete the state and federal National Register review process. Buckeye will work with the state and federal reviewers to finalize these documents and have them listed in the NRHP. While state and federal review schedules may vary depending on staff workloads, it is expected that the MPL will be listed in the NRHP within 24 months of commencement of work on the mitigation projects. The MPL and TwHP lesson plan will be shared with the public, as outlined in the mitigation plan, upon final acceptance by OHPO and, for the MPL, listing in the NRHP. This will mark the successful completion of the mitigation projects. If, at any point in the review process following the OHPO staff's acceptance of the MPL, it becomes clear that formal listing of the MPL in the NRHP is not feasible, Buckeye will notify all signatories of the PA. As long as Buckeye has produced a product that meets the expectations of the OHPO staff and completed the associated public outreach efforts, they will have fulfilled their obligations under the PA.

B. Identification and Mitigation Efforts for Archaeological Resources

1. Previously, Buckeye commissioned a Phase I archaeological survey of the direct APE for 52 proposed turbine locations and associated facilities established during development of the Buckeye Wind Farm (Nelson and Meece, 2011). The survey strategy and methods were based on a work plan developed in consultation with USFWS and OHPO (Church et al. 2010). Four historic-period archaeological sites, five prehistoric sites, and five prehistoric isolated finds were identified during the survey. None of the sites was recognized as meeting National Register eligibility criteria. Additional field work was recommended for site 33-CH-415 to determine this site's National Register eligibility. Buckeye proposes to avoid site 33-CH-415 through alteration of the Projects' layout. Additional archaeological work will be performed to identify an alternative route for the direct APE that avoids the site, or if avoidance proves infeasible, a Phase II NRHP evaluation will be conducted on the portion of the site within the direct APE. The USFWS and OHPO have concurred with these recommendations.
2. Prior to the initiation of any construction or mitigation activities that could potentially disturb or damage archaeological resources within the direct APE, Buckeye shall carry out archaeological investigations in accordance with the strategy and methods presented in the work plan approved by USFWS and OHPO (Pullins et al., 2012), 1994 *Archaeology Guidelines* of the Ohio Historic Preservation Office, and in accordance with the methodology set forth in this PA. USFWS shall ensure that all scopes of work for archaeological

identification and evaluation produced by Buckeye include a plan for the treatment of human remains and funerary objects that might be encountered.

- a. Additional Phase I Archaeological Survey. Phase I archaeological survey of the direct APE for development of the Buckeye II Wind Farm will follow the strategy and methods presented in the work plan approved by USFWS and OHPO (Pullins et al., 2012). Phase I work will be designed to provide information regarding the significance of all identified archaeological sites to the NRHP. This work will be done in consultation with OHPO and all deliverables will be submitted by USFWS to OHPO for review and comment.
 - 1) If USFWS determines and OHPO concurs that a "site is not eligible" for the NRHP, then no further investigations of that site will be conducted.
 - 2) If USFWS determines and OHPO concurs that a site with indeterminable eligibility can and will be avoided, which would be the preferred option, then no further investigation of that site will be conducted, unless avoidance no longer becomes feasible.
- b. Phase II Archaeological Testing. If all parties agree that the "eligibility of a site is indeterminable" and avoidance is not feasible, USFWS shall ensure that a Phase II Research Design will be developed by Buckeye in consultation with the OHPO. This document will be consistent with OHPO guidelines. Phase II work will be designed to provide information regarding the significance of an archaeological site as "site is not eligible" or "site is eligible" to the NRHP. However, if Buckeye determines that a site can be avoided after Phase II field work has been initiated but not completed, it will not be necessary to complete the field investigation. In such instance the work completed will be reported, but a final determination on eligibility of the site will not be required. This work will be done in consultation with OHPO and all deliverables will be submitted by USFWS to OHPO for review and comment.
 - 1) If USFWS determines and OHPO concurs that a "site is not eligible" for the NRHP, then no further investigations of that site will be conducted.
 - 2) If USFWS determines but OHPO will not concur regarding eligibility, all appropriate information regarding the site will be submitted by USFWS to the Keeper of the National Register, National Park Service, for review. The Keeper's determination of eligibility will be final.

- 3) If USFWS determines and OHPO concurs that an eligible site can and will be avoided, which would be the preferred option, then no further investigation of that site will be conducted, unless avoidance no longer becomes feasible.

c. Application of Criteria of Adverse Effects. If USFWS determines and OHPO concurs that the "site is eligible", but through discussions with Buckeye, USFWS determines avoidance is not a feasible alternative, then USFWS will consult with OHPO to apply the criteria of adverse effects. This work will be completed in consultation with OHPO guidelines and all deliverables will be submitted for OHPO review and comment by USFWS.

- 1) If following the application of the criteria of adverse effects, USFWS determines and OHPO concurs that the Projects and the mitigation will have "no effect" or "no adverse effect" on an eligible site then no further investigations of that site will be conducted.

- 2) If USFWS determines and OHPO concurs that the Projects and/or the mitigation will have an "adverse effect" on an eligible site, but the construction and/or mitigation project is subsequently redesigned by Buckeye to avoid adverse effects, then the finding would be changed to "no effect". USFWS shall provide written documentation demonstrating avoidance for OHPO concurrence.

- 3) If avoidance of adverse effects is still not feasible after redesign of the construction and/or mitigation project by Buckeye, the scope of the adverse effects will be reassessed.

d. Phase III Archaeological Data Recovery. If all parties agree that the Projects and/or mitigation will have an "adverse effect" on an eligible site and avoidance is not a feasible option, then USFWS will consult with OHPO to identify measures to minimize and mitigate the adverse effect to the site. USFWS shall ensure that the PA will be amended to include a Treatment (Data Recovery) Plan developed by Buckeye in consultation with OHPO. The plan will be consistent with OHPO guidelines and all deliverables will be submitted by USFWS to OHPO for review and comment.

Following OHPO review and concurrence of proposed Phase III deliverables, no further investigations of that site will be conducted, unless an unanticipated post-review discovery is made.

e. Post-review discoveries. In the event of any unanticipated discoveries of archaeological sites, unmarked cemeteries, or human remains and

associated funerary objects during the implementation of the Projects and/or mitigation, all activities will be suspended in the area of discovery. Buckeye will contact USFWS and OHPO within 48 business hours of the discovery, via telephone at the following numbers: For USFWS, Regional Historic Preservation Officer James Myster at 612-713-5439 and Megan Seymour, NEPA Projects Manager at 614-416-8993 ext. 16, and for OHPO David Snyder at 614-298-2000. If the discovery is of human remains, local law enforcement will be contacted as well.

In consultation with OHPO, USFWS shall ensure that, if necessary, a qualified archaeologist, hired and paid by Buckeye (if applicable), will visit and assess the discovery, anticipated to be within 72 hours of the initial notification, or as soon as practicable. Based upon that verbal or written assessment and through consultation, USFWS and OHPO shall agree upon the appropriate treatment of the discovery prior to resumption of construction activities in the area of discovery. If human remains are determined to be of Native American origin, OHPO, in consultation with USFWS shall determine the treatment and disposition of human remains. Buckeye affirms that all human remains will be avoided by direct construction impacts where feasible.

Prior to the start of construction and mitigation, Buckeye will remind its contractor, in writing, that finding unknown sites and/or human remains are still possible even if the project has been cleared and outline to them the process of inadvertent discovery notification as described above.

C. Curation

Buckeye will return all artifacts and materials recovered through implementation of the terms of this PA to the respective private landowner, unless Buckeye has obtained signed gift agreements deeding artifacts and materials to the state of Ohio. Buckeye will request the landowners to donate the cultural material whenever possible and appropriate.

If Buckeye obtains signed gift agreements from private landowners deeding artifacts and recovered materials to the state of Ohio, then Buckeye will submit such artifacts, materials or records for permanent curation at a repository that meets federal standards under 36 CFR Part 79.

D. Dispute Resolution

Should any signatory to this PA object in writing at any time to any actions proposed or the manner in which the terms of this PA are implemented, USFWS,

within the limits of its authority, will consult with such party to resolve the objection. If USFWS determines that the objection cannot be resolved, that agency will:

- 1) Forward all documentation relevant to the dispute, including the resolution proposed by USFWS, to the Advisory Council on Historic Preservation (ACHP). ACHP will provide USFWS with its advice, pursuant to 36 CFR Part 800.2(b)(2), on the resolution of the objection within thirty (30) days of receiving adequate documentation. Prior to reaching a final decision on the dispute, USFWS will prepare a written response that takes into account any timely advice or comments from the ACHP, signatories and consulting parties regarding the dispute, and provide a copy of this written response. USFWS will then proceed according to its final decision.
- 2) Any ACHP comments provided in response to such a request will be taken into account in accordance with 36 CFR Part 800.7(c)(4).
- 3) If ACHP does not provide its advice regarding the dispute within thirty (30) days, USFWS may make a final decision and proceed accordingly. Prior to reaching a final decision, USFWS will prepare a written response that takes into account any timely comments regarding the dispute from the signatories and consulting parties to the PA and provide them and ACHP with a copy of the written response.

The responsibilities of USFWS to carry out all other actions subject to the terms of this PA that are not the subject of the dispute remain unchanged.

If at any time during the implementation of the measures stipulated in this PA an objection should be raised by the public, USFWS will notify the signatories to this PA and consult with the objecting party to seek resolution. If USFWS determines that the objection may be valid and cannot be resolved, it will decide if the objection is of such magnitude to seek the advice or comment of ACHP (as described above).

E. Reporting

Should there be an interruption of activity associated with the construction and/or mitigation for any significant length of time, Buckeye will provide to the signatories, at the minimum every six (6) months, a project status letter regarding the completion of work associated with the above stipulations.

IV. TERMS OF AGREEMENT

- A. The term of this PA will be 30 years from the date of execution by the last signatory, unless the parties agree to extend its term. If its stipulations have not

been carried out, and prior to work continuing on the proposed Projects and/or mitigation, USFWS, OHPO or Buckeye, as appropriate, will either (a) amend the agreement pursuant to 36 CFR Part 800.6, (b) execute another agreement pursuant to 36 CFR Part 800.6 or 800.14, or (c) request, take into account, and respond to the comments of ACHP under 36 CFR Part 800.7.

- B. Six (6) months prior to the PA's expiration date, USFWS will notify the other signatories of the impending expiration. USFWS, OHPO or Buckeye as appropriate, may consult with the other signatories to reconsider the terms of the PA and amend it in accordance with Stipulation V. USFWS, OHPO or Buckeye as appropriate, will notify the parties as to the course to be pursued.

V. AMENDMENT

- A. Any party to this PA may withdraw from it by providing thirty (30) days' notice to the other parties, provided that the parties will consult during the period prior to withdrawal to seek agreement on amendments or other actions that would avoid withdrawal.
- B. In the event of an early termination of the agreement pursuant to Paragraph V.A, and if construction is ongoing, construction that may result in an adverse effect to a historic property will cease, until either (a) USFWS executes an amendment to the agreement pursuant to 36 CFR Part 800.6, (b) executes another agreement pursuant to 36 CFR Part 800.6 or 800.14, or (c) USFWS requests, takes into account, and responds to the comments of ACHP under 36 CFR Part 800.7. USFWS will notify the signatories and consulting parties as to the course of action it will pursue.

VI. NOTICES

Any notice permitted or required by this PA shall be in writing, delivered personally to the persons listed below, or shall be deemed given five (5) days after deposit in the United States Mail, certified and postage prepaid, return receipt requested and addressed as follows, or at such other address as any party may from time to time specify to the other party in writing. Notices may be delivered by facsimile or other electronic means, provided that they are also delivered personally or by certified mail, and such electronic notices shall thereafter be deemed effective upon receipt. Notices shall be transmitted so that they are received within the specified deadlines.

Buckeye: Michael Speerschneider, Buckeye Wind LLC, 1251 Waterfront Place,
3rd Floor, Pittsburgh, PA 15222 Phone: (412) 253-9400,
mspeerschneider@everpower.com

USFWS: Megan Seymour, Ohio Ecological Services Field Office, 4625 Morse
Road, Suite 104, Columbus, Ohio 43230, 614-416-8994 (fax),
megan_seymour@fws.gov.

OHPO: David Snyder, Archaeology Reviews Manager, Ohio Historic Preservation
Office, 800 E. 17th Avenue, Columbus, OH 43211-2474, Phone: (614) 298-2000,
Fax: (614) 298-2037, dsnyder@ohiohistory.org.

EXECUTION of this PA by USFWS, OHPO, and Buckeye, and implementation of its terms
evidences that USFWS has taken into account the effects of this undertaking on historic
properties and afforded ACHP a reasonable opportunity to comment.

Signatories

U.S. FISH AND WILDLIFE SERVICE

By Lynn M. Lewis Date 5/9/13
Lynn M. Lewis, Assistant Regional Director, Ecological Services, Midwest Region

OHIO HISTORIC PRESERVATION OFFICE

By Mark J. Epstein Date 5.13.13
Mark J. Epstein, Deputy State Historic Preservation Officer for Resource
Protection and Review

BUCKEYE WIND, LLC

By Michael Speerschneider Date 5-13-2013
Michael Speerschneider, Senior Director

REFERENCES CITED

Church, Flora J., Stevan C. Pullins, and C. Michael Anslinger
2010 Work Plan for Completing a Phase I Archaeological Survey for the Buckeye Wind Farm in Champaign County, Ohio, Submitted to EverPower Wind Holdings, Inc. Prepared by Cultural Resources Analysts, Inc.

Doyon, Ann Marie P., and Elizabeth G. Heavrin
2010 Work Plan for Completing an Architectural Survey for the Proposed Buckeye Wind Farm in Champaign County, Ohio, Submitted to EverPower Wind Holdings, Inc. Prepared by Cultural Resources Analysts, Inc.

Heavrin, Elizabeth G.
2011 Work Plan for Completing An Architectural Survey for Phase II of the Proposed Buckeye Wind Farm in Champaign County, Ohio. Contract Publication Series WV11-108, Submitted to EverPower Wind Holdings, Inc. Prepared by Cultural Resources Analysts, Inc.

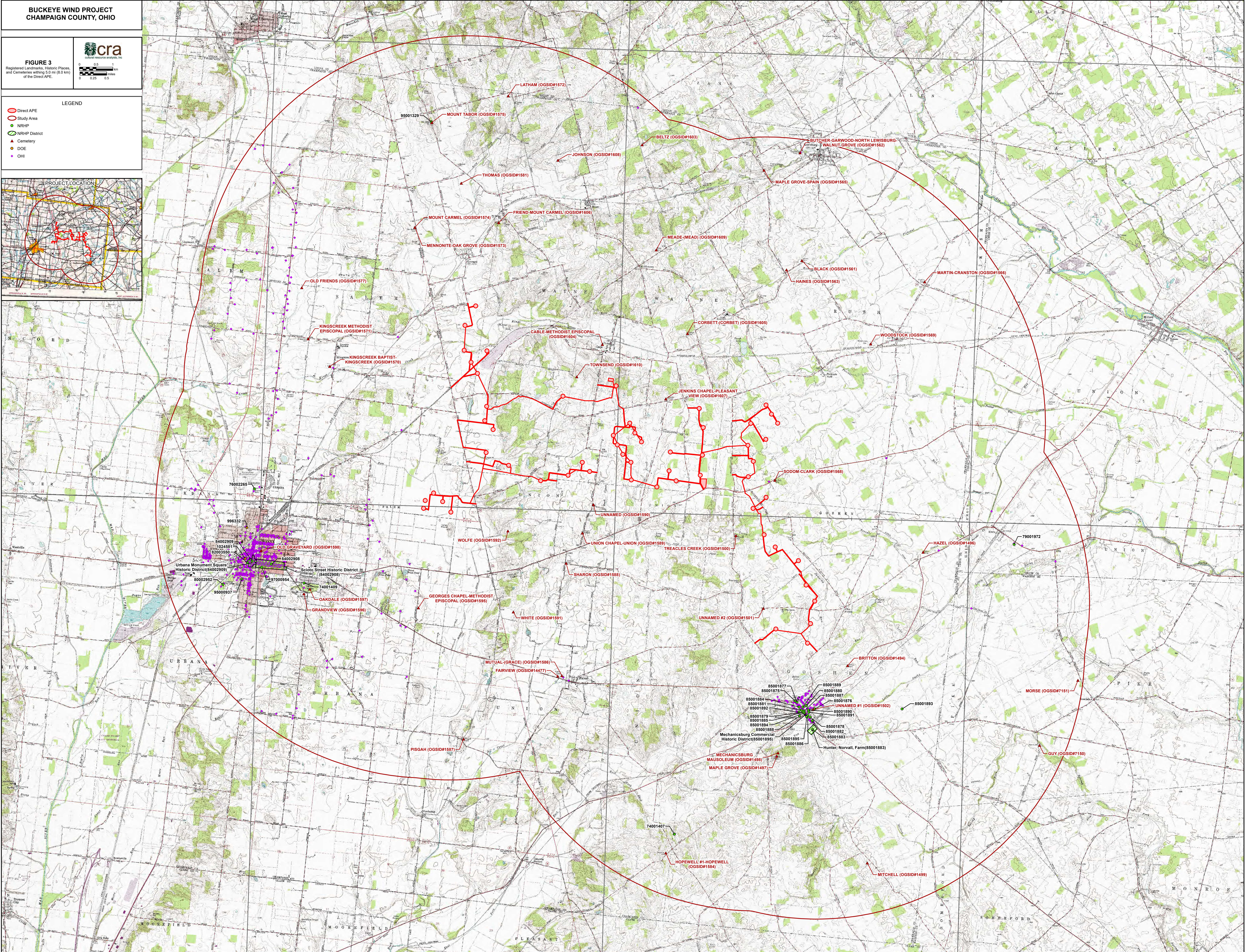
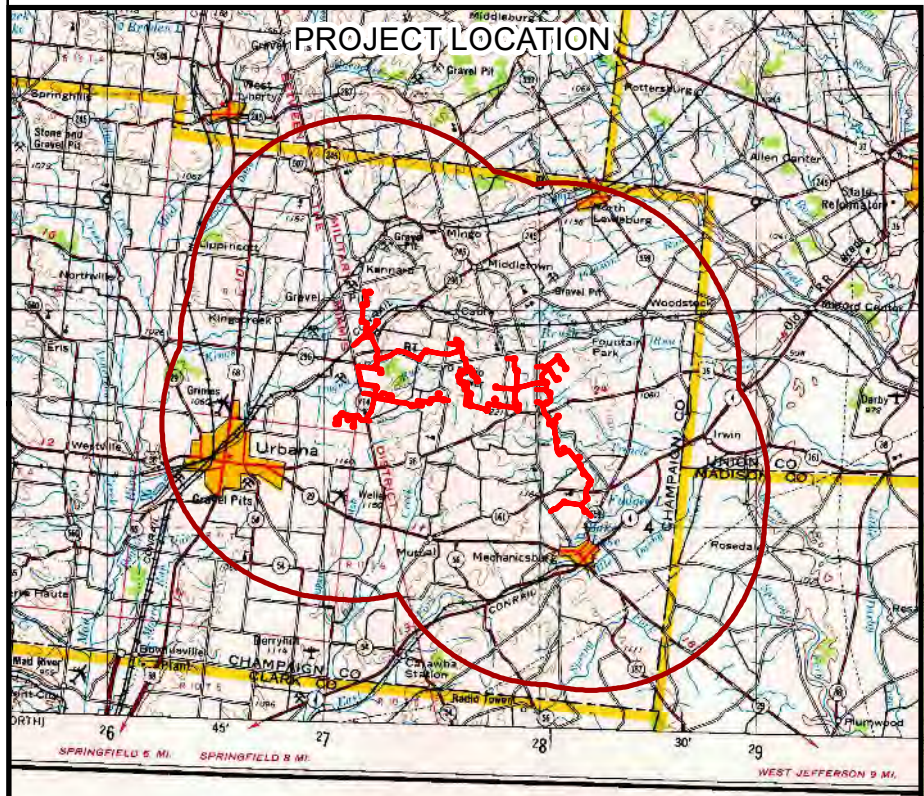
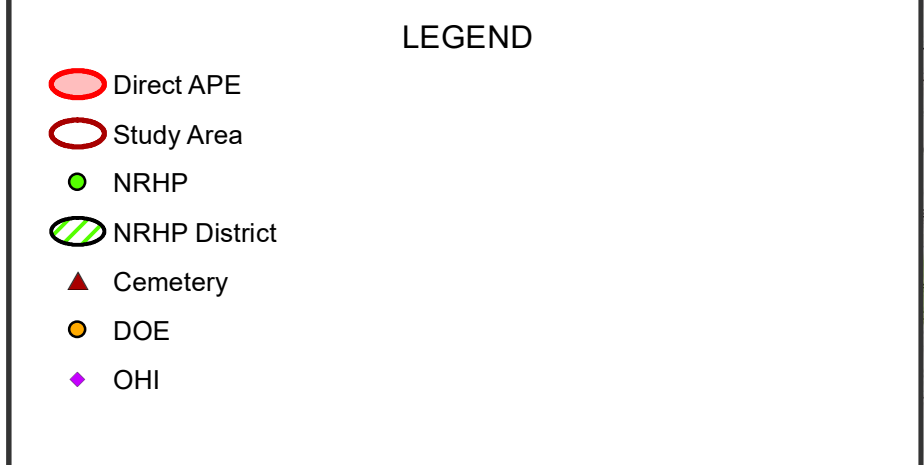
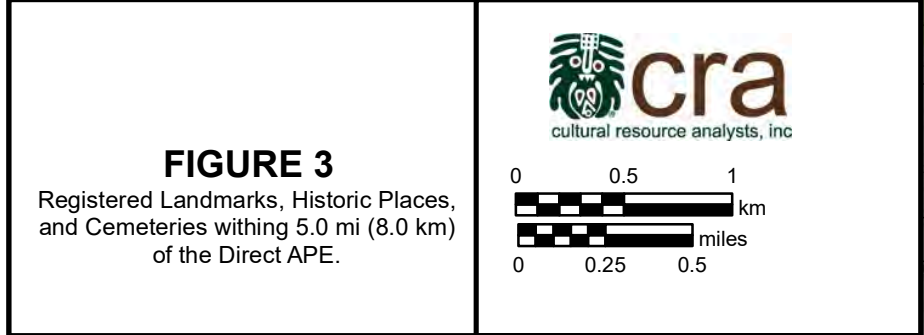
Heavrin, Elizabeth G.,
2013 Addendum to the Architectural Survey for the Proposed Buckeye Wind Farm in Champaign County, Ohio. Contract Publication Series 13-013, Submitted to EverPower Wind Holdings, Inc. Prepared by Cultural Resources Analysts, Inc.

Heavrin, Elizabeth G., Robert C. Whetsell, and Ann Marie P. Doyon
2011 Architectural Survey for the Proposed Buckeye Wind Farm in Champaign County, Ohio. Contract Publication Series WV10-045, Submitted to EverPower Wind Holdings, Inc. Prepared by Cultural Resources Analysts, Inc.

Nelson, Christopher L., and Jamie S. Meece
2011 Phase I Archaeological Survey for the Proposed Buckeye Wind Farm in Champaign County, Ohio. Contract Publication Series WV10-006, Submitted to EverPower Wind Holdings, Inc. Prepared by Cultural Resources Analysts, Inc.

Pullins, Stevan C., Flora Church, and James H. Kompanek
2012 Work Plan for Completing a Phase I Archaeological Survey for the Proposed Phase II Development of the Buckeye Wind Farm in Champaign County, Ohio. Contract Publication Series WV11-107, Submitted to EverPower Wind Holdings, Inc. Prepared by Cultural Resources Analysts, Inc.

BUCKEYE WIND PROJECT
CHAMPAIGN COUNTY, OHIO



This foregoing document was electronically filed with the Public Utilities

Commission of Ohio Docketing Information System on

12/22/2017 4:01:43 PM

in

Case No(s). 17-2516-EL-BGA, 17-2517-EL-BGA

Summary: Application Exhibit H - Cultural resources electronically filed by Mr. Ryan D. Elliott on behalf of Buckeye Wind LLC and Champaign Wind LLC