



Figure 12. A shovel tested area within the central portion of the project.



Figure 13. A shovel tested wooded area within the southern portion of the project.





Figure 14. A surface collected soybean stubble field in the southern portion of the project.



Figure 15. A wet area in the southern portion of the project.





Figure 16. The surface collected harvested cornfield in the southern portion of the project.



Figure 17. Visibility within the surface collected cornfields.





Figure 18. Visibility within the surface collected soybean fields.



Figure 19. Visibility within the tilled fields.



## Schematic of a Test Unit Profile

Haskins Loam (HkA)

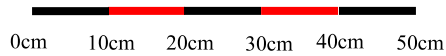


**Ap** 10YR3/2 Dark Grayish Brown silt loam /  
silty clay loam



**B** 10YR4/6 Dark Yellowish Brown silty clay  
loam

Scale



**Provenience:** 200S, 0E

**Depth to Subsoil:** 9 cm

**Excavator:** CG



Figure 20. A typical shovel test unit excavated within the project.



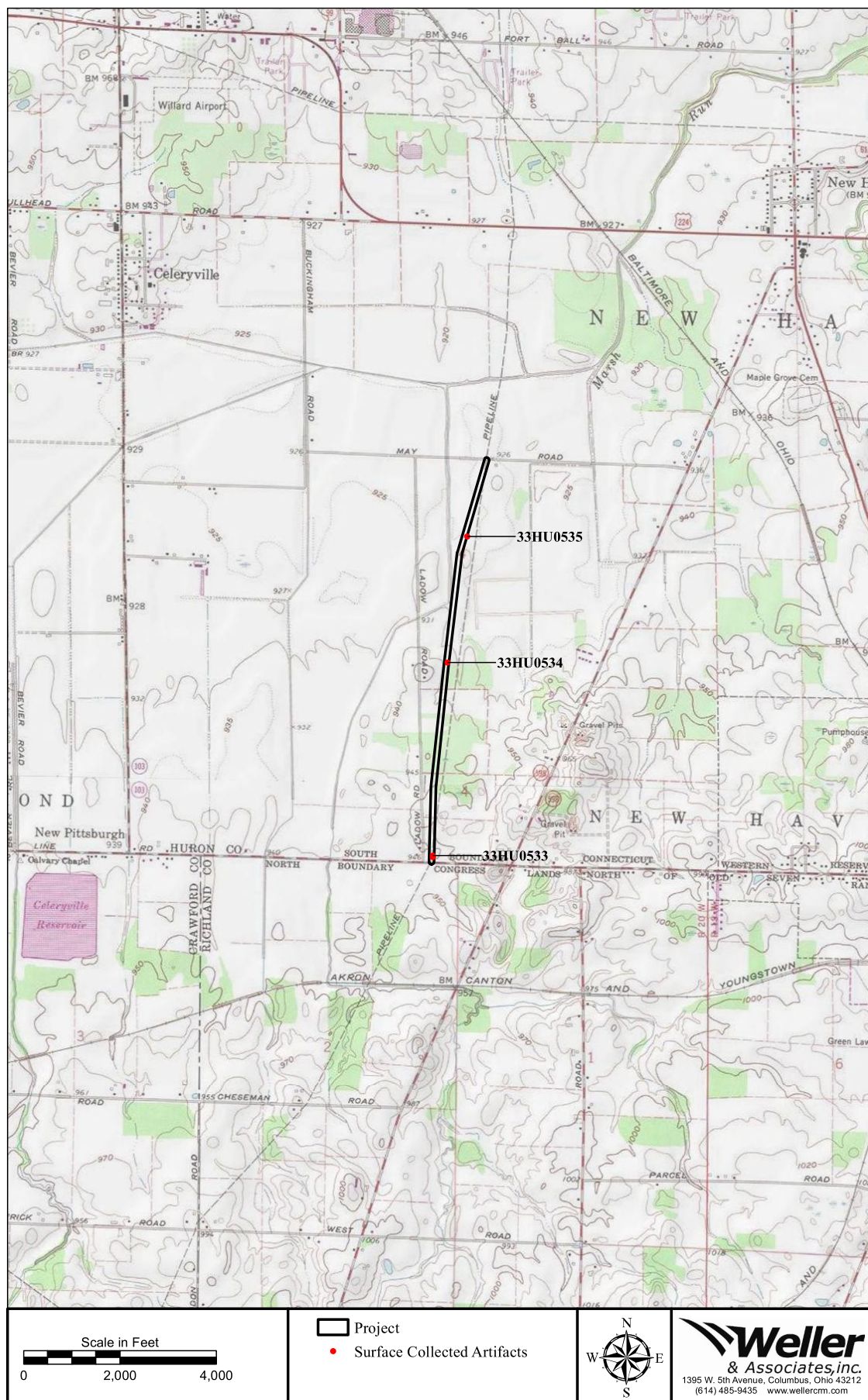


Figure 21. Portions of the USGS 1915 Norwalk and 1915 Crestline, Ohio 15 Minute Series (Topographic) maps indicating the location of the project and sites 33HU0533-35.



**Cultural Resource Management Literature Review for a  
2,591 m (8,500 ft) Long Columbia Gas Pipeline in  
New Haven Township, Huron County, Ohio**

**Ryan J. Weller**

**August 1, 2017**

1395 West Fifth Ave.  
Columbus, OH 43212  
Phone: 614.485.9435  
Fax: 614.485.9439  
Website: [www.wellercrm.com](http://www.wellercrm.com)

**This foregoing document was electronically filed with the Public Utilities**

**Commission of Ohio Docketing Information System on**

**12/21/2017 12:45:49 PM**

**in**

**Case No(s). 17-2497-GA-BLN**

Summary: Exhibit Appendix C Part 2 electronically filed by Cheryl A MacDonald on behalf of Columbia Gas of Ohio, Inc.