



Photograph 10. Representative view of the elevated and maintained Line D000B ROW, bisecting the forested wetland habitat at the southern terminus of the Project.
Photograph taken facing north.

Line D000B Pipeline Replacement Project
Cincinnati, Hamilton County, Ohio
CEC Project 153-230
Photographed on May 16, 18 and 19, 2016



Photograph 11. View of PRT-10.



Photograph 12. View of PRT-12.

Line D000B Pipeline Replacement Project
 Cincinnati, Hamilton County, Ohio
 CEC Project 153-230
 Photographed on May 16, 18 and 19, 2016

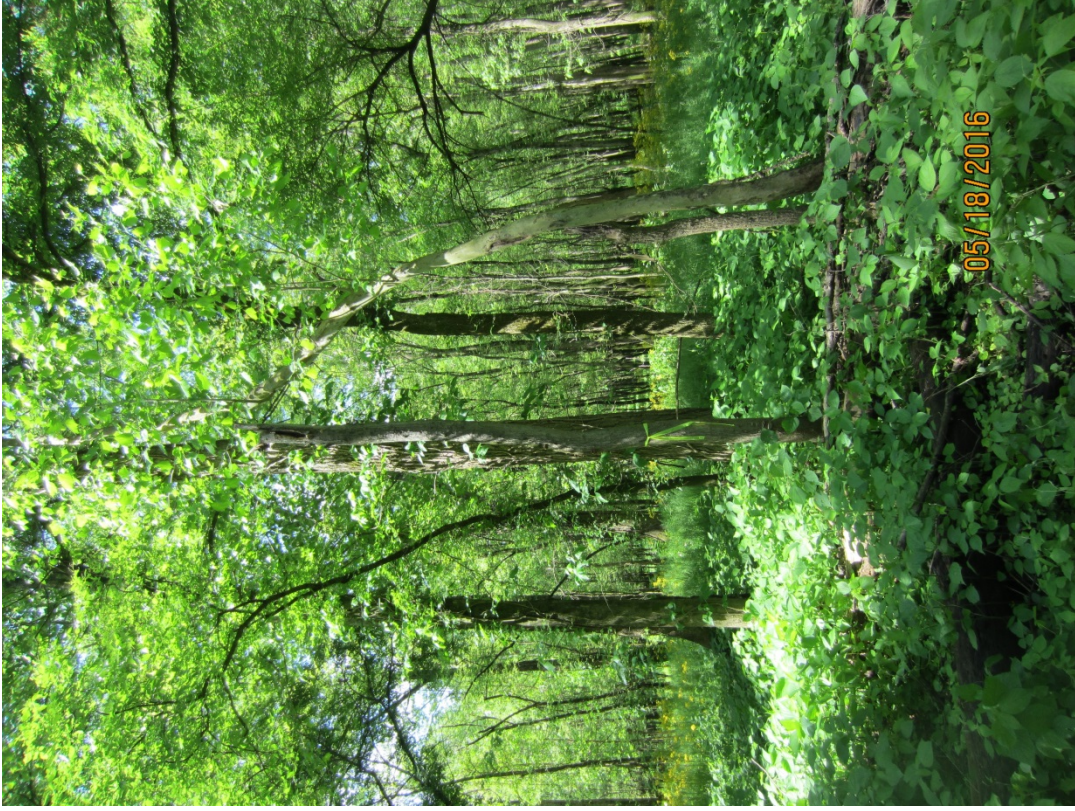


Photograph 13. View of PRT-19.



Photograph 14. View of PRT-20.

Line D000B Pipeline Replacement Project
Cincinnati, Hamilton County, Ohio
CEC Project 153-230
Photographed on May 16, 18 and 19, 2016



Photograph 15. View of PRT-47.

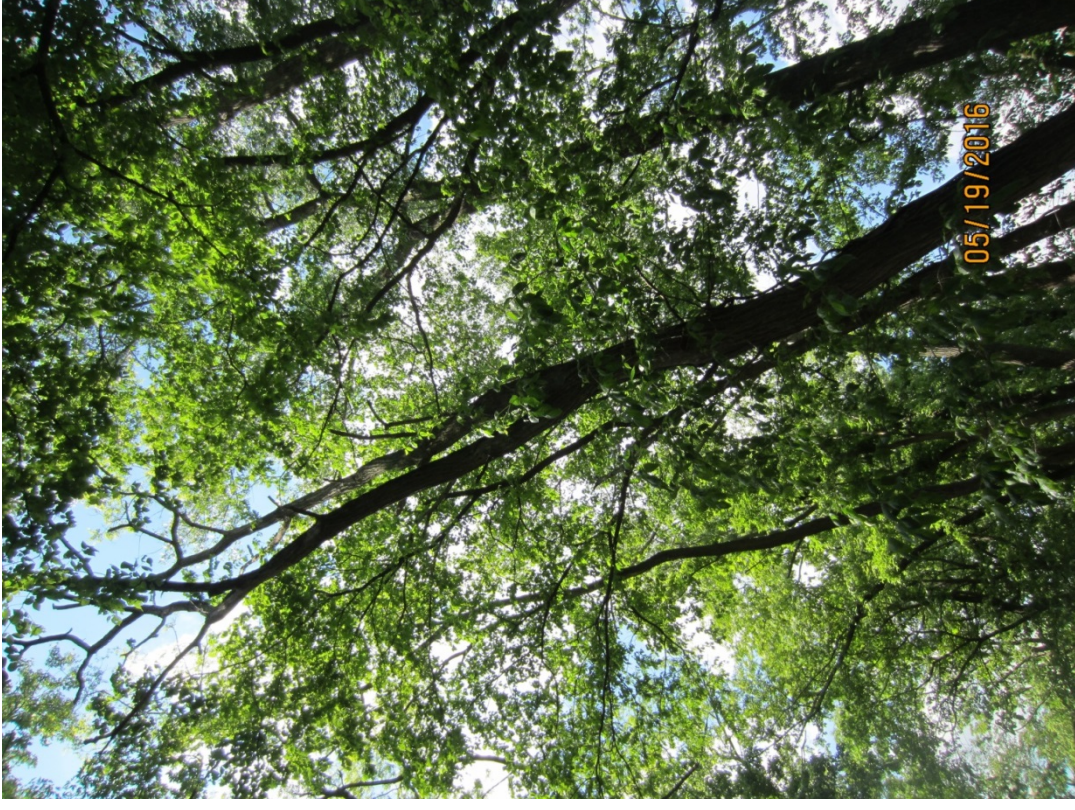


Photograph 16. View of PRT-50.

Line D000B Pipeline Replacement Project
 Cincinnati, Hamilton County, Ohio
 CEC Project 153-230
 Photographed on May 16, 18 and 19, 2016



Photograph 17. View of PRT-51.



Photograph 18. View of PRT-96.

Line D000B Pipeline Replacement Project
 Cincinnati, Hamilton County, Ohio
 CEC Project 153-230
 Photographed on May 16, 18 and 19, 2016



Photograph 19. Wild turkey (*Meleagris gallopavo*) from the mature forested floodplain habitat near the southern terminus of the Project.



Photograph 20. Elevated view of existing bermed and maintained Line D000B ROW. Note the wild turkeys. Photograph taken facing south.

Line D000B Pipeline Replacement Project
 Cincinnati, Hamilton County, Ohio
 CEC Project 153-230
 Photographed on May 16, 18 and 19, 2016



Photograph 21. View of potential running buffalo clover habitat along a trail or two track that is located on an embankment that formerly functioned as a railroad corridor, facing southwest.



Photograph 22. View of maintained Line D000B ROW.
Photograph taken facing south-southeast.

Line D000B Pipeline Replacement Project
Cincinnati, Hamilton County, Ohio
CEC Project 153-230
Photographed on May 16, 18 and 19, 2016



Photograph 23. View of emergent wetland habitat, facing south.



Photograph 24. View of the existing Line D000B ROW along the south side of Stites Road.
Photograph taken facing west-southwest.

Line D000B Pipeline Replacement Project
Cincinnati, Hamilton County, Ohio
CEC Project 153-230
Photographed on May 16, 18 and 19, 2016



Photograph 25. View of forested wetland habitat, facing east-northeast.



Photograph 26. View of trail and mowed park habitat on west side of Strader Avenue.
Photograph taken facing north-northwest.

Line D000B Pipeline Replacement Project
Cincinnati, Hamilton County, Ohio
CEC Project 153-230
Photographed on May 16, 18 and 19, 2016



Photograph 27. View of the existing Line D000B ROW near the northern terminus of the Project. Photograph taken facing southeast.

Line D000B Pipeline Replacement Project
Cincinnati, Hamilton County, Ohio
CEC Project 153-230
Photographed on May 16, 18 and 19, 2016

ATTACHMENT B

**USFWS OHIO COUNTY DISTRIBUTION OF FEDERALLY-LISTED
THREATENED, ENDANGERED, PROPOSED & CANDIDATE SPECIES,
REVISED SEPTEMBER 2016**

Ohio

County Distribution of Federally-Listed Threatened, Endangered, Proposed, and Candidate Species

Revised September 2016

County	Species	Status	Habitat
Adams	Indiana bat (<i>Myotis sodalis</i>)	Endangered	Hibernacula = Caves and mines; Maternity and foraging habitat = small stream corridors with well developed riparian woods; upland forests
	Northern long-eared bat <i>Myotis septentrionalis</i>	Threatened	Hibernates in caves and mines - swarming in surrounding wooded areas in autumn. During late spring and summer roosts and forages in upland forests.
	Fanshell (<i>Cyprogenia stegaria</i>) (= <i>C. irrorata</i>)	Endangered	Found in areas of packed sand and gravel at locations in a good current
	Pink mucket pearlymussel (<i>Lampsilis abrupta</i>)	Endangered	The lower Ohio River and its larger tributaries
	Rayed bean (<i>Villosa fabalis</i>)	Endangered	Smaller, headwater creeks, but they are sometimes found in large rivers
	Sheepnose (<i>Plethobasus cyphus</i>)	Endangered	Shallow areas in larger rivers and streams
	Snuffbox (<i>Epioblasma triquetra</i>)	Endangered	Small to medium-sized creeks and some larger rivers, in areas with a swift current
	Running buffalo clover (<i>Trifolium stoloniferum</i>)	Endangered	Disturbed bottomland meadows; disturbed sites that have shade during part of each day
Allen	Indiana bat (<i>Myotis sodalis</i>)	Endangered	Hibernacula = Caves and mines; Maternity and foraging habitat = small stream corridors with well developed riparian woods; upland forests
	Northern long-eared bat <i>Myotis septentrionalis</i>	Threatened	Hibernates in caves and mines - swarming in surrounding wooded areas in autumn. During late spring and summer roosts and forages in upland forests.
Ashland	Indiana bat (<i>Myotis sodalis</i>)	Endangered	Hibernacula = Caves and mines; Maternity and foraging habitat = small stream corridors with well developed riparian woods; upland forests
	Northern long-eared bat <i>Myotis septentrionalis</i>	Threatened	Hibernates in caves and mines - swarming in surrounding wooded areas in autumn. During late spring and summer roosts and forages in upland forests.
Ashtabula	Indiana bat (<i>Myotis sodalis</i>)	Endangered	Hibernacula = Caves and mines; Maternity and foraging habitat = small stream corridors with well developed riparian woods; upland forests
	Northern long-eared bat <i>Myotis septentrionalis</i>	Threatened	Hibernates in caves and mines - swarming in surrounding wooded areas in autumn. During late spring and summer roosts and forages in upland forests.

	Kirtland's warbler (<i>Dendroica kirtlandii</i>)	Endangered	Kirtland's warblers are known to migrate along the Lake Erie shoreline counties (Ashtabula, Cuyahoga, Erie, Lake, Lorain, Lucas, Ottawa, Sandusky counties) through Ohio in late April-May and late August-early October.
	Piping plover (<i>Charadrius melodus</i>)	Endangered	Beaches along shorelines of the Great Lakes
	Red Knot (Rufa) <i>Calidris canutus rufa</i>	Threatened	Present in Ohio during spring and fall migration
	Eastern massasauga (<i>Sistrurus catenatus</i>)	Proposed as Threatened	Wetlands and adjacent uplands
	Clubshell (<i>Pleurobema clava</i>)	Endangered	Found in coarse sand and gravel areas of runs and riffles within streams and small rivers
	Snuffbox (<i>Epioblasma triquetra</i>)	Endangered	Small to medium-sized creeks and some larger rivers, in areas with a swift current
Athens	Indiana bat (<i>Myotis sodalis</i>)	Endangered	Hibernacula = Caves and mines; Maternity and foraging habitat = small stream corridors with well developed riparian woods; upland forests
	Northern long-eared bat <i>Myotis septentrionalis</i>	Threatened	Hibernates in caves and mines - swarming in surrounding wooded areas in autumn. During late spring and summer roosts and forages in upland forests.
	American burying beetle (<i>Nicrophorus americanus</i>)	Endangered	
	Fanshell (<i>Cyprogenia stegaria</i>) (= <i>C. irrorata</i>)	Endangered	Found in areas of packed sand and gravel at locations in a good current
	Pink mucket (<i>Lampsilis abrupta</i>)	Endangered	The lower Ohio River and its larger tributaries
	Sheepnose (<i>Plethobasus cyphus</i>)	Endangered	Shallow areas in larger rivers and streams
	Snuffbox (<i>Epioblasma triquetra</i>)	Endangered	Small to medium-sized creeks and some larger rivers, in areas with a swift current
Auglaize	Indiana bat	Endangered	Hibernacula = Caves and mines; Maternity and foraging habitat = small stream corridors with well developed riparian woods; upland forests
	Northern long-eared bat <i>Myotis septentrionalis</i>	Threatened	Hibernates in caves and mines - swarming in surrounding wooded areas in autumn. During late spring and summer roosts and forages in upland forests.
Belmont	Indiana bat (<i>Myotis sodalis</i>)	Endangered	Hibernacula = Caves and mines; Maternity and foraging habitat = small stream corridors with well developed riparian woods; upland forests
	Northern long-eared bat <i>Myotis septentrionalis</i>	Threatened	Hibernates in caves and mines - swarming in surrounding wooded areas in autumn. During late spring and summer roosts and forages in upland forests.
Brown	Indiana bat (<i>Myotis sodalis</i>)	Endangered	Hibernacula = Caves and mines; Maternity and foraging habitat = small stream corridors with well developed riparian woods; upland forests

	Northern long-eared bat <i>Myotis septentrionalis</i>	Threatened	Hibernates in caves and mines - swarming in surrounding wooded areas in autumn. During late spring and summer roosts and forages in upland forests.
	Fanshell (<i>Cyprogenia stegaria</i>) (= <i>C. irrorata</i>)	Endangered	Found in areas of packed sand and gravel at locations in a good current
	Pink mucket pearlymussel (<i>Lampsilis abrupta</i>)	Endangered	The lower Ohio River and its larger tributaries
	Rayed bean (<i>Villosa fabalis</i>)	Endangered	Smaller, headwater creeks, but they are sometimes found in large rivers
	Sheepnose (<i>Plethobasus cyphus</i>)	Endangered	Shallow areas in larger rivers and streams
	Snuffbox (<i>Epioblasma triquetra</i>)	Endangered	Small to medium-sized creeks and some larger rivers, in areas with a swift current
	Running buffalo clover (<i>Trifolium stoloniferum</i>)	Endangered	Disturbed bottomland meadows; disturbed sites that have shade during part of each day
Butler	Indiana bat (<i>Myotis sodalis</i>)	Endangered	Hibernacula = Caves and mines; Maternity and foraging habitat = small stream corridors with well developed riparian woods; upland forests
	Northern long-eared bat <i>Myotis septentrionalis</i>	Threatened	Hibernates in caves and mines - swarming in surrounding wooded areas in autumn. During late spring and summer roosts and forages in upland forests.
	Rayed bean (<i>Villosa fabalis</i>)	Endangered	Smaller, headwater creeks, but they are sometimes found in large rivers
Carroll	Indiana bat (<i>Myotis sodalis</i>)	Endangered	Hibernacula = Caves and mines; Maternity and foraging habitat = small stream corridors with well developed riparian woods; upland forests
	Northern long-eared bat <i>Myotis septentrionalis</i>	Threatened	Hibernates in caves and mines - swarming in surrounding wooded areas in autumn. During late spring and summer roosts and forages in upland forests.
Champaign	Indiana bat (<i>Myotis sodalis</i>)	Endangered	Hibernacula = Caves and mines; Maternity and foraging habitat = small stream corridors with well developed riparian woods; upland forests
	Northern long-eared bat <i>Myotis septentrionalis</i>	Threatened	Hibernates in caves and mines - swarming in surrounding wooded areas in autumn. During late spring and summer roosts and forages in upland forests.
	Eastern massasauga (<i>Sistrurus catenatus</i>)	Proposed as Threatened	Wetlands and adjacent uplands
Clark	Indiana bat (<i>Myotis sodalis</i>)	Endangered	Hibernacula = Caves and mines; Maternity and foraging habitat = small stream corridors with well developed riparian woods; upland forests
	Northern long-eared bat <i>Myotis septentrionalis</i>	Threatened	Hibernates in caves and mines - swarming in surrounding wooded areas in autumn. During late spring and summer roosts and forages in upland forests.

	Eastern massasauga (<i>Sistrurus catenatus</i>)	Proposed as Threatened	Wetlands and adjacent uplands
	Rayed bean (<i>Villosa fabalis</i>)	Endangered	Smaller, headwater creeks, but they are sometimes found in large rivers
	Eastern prairie fringed orchid (<i>Platanthera leucophaea</i>)	Threatened	Mesic to wet prairies and meadows
Clermont	Indiana bat (<i>Myotis sodalis</i>)	Endangered	Hibernacula = Caves and mines; Maternity and foraging habitat = small stream corridors with well developed riparian woods; upland forests
	Northern long-eared bat <i>Myotis septentrionalis</i>	Threatened	Hibernates in caves and mines - swarming in surrounding wooded areas in autumn. During late spring and summer roosts and forages in upland forests.
	Fanshell (<i>Cyprogenia stegaria</i>) (= <i>C. irrorata</i>)	Endangered	Found in areas of packed sand and gravel at locations in a good current
	Pink mucket pearlymussel (<i>Lampsilis abrupta</i>)	Endangered	The lower Ohio River and its larger tributaries
	Rayed bean (<i>Villosa fabalis</i>)	Endangered	Smaller, headwater creeks, but they are sometimes found in large rivers
	Sheepnose (<i>Plethobasus cyphus</i>)	Endangered	Shallow areas in larger rivers and streams
	Snuffbox (<i>Epioblasma triquetra</i>)	Endangered	Small to medium-sized creeks and some larger rivers, in areas with a swift current
	Running buffalo clover (<i>Trifolium stoloniferum</i>)	Endangered	Disturbed bottomland meadows; disturbed sites that have shade during part of each day
Clinton	Indiana bat (<i>Myotis sodalis</i>)	Endangered	Hibernacula = Caves and mines; Maternity and foraging habitat = small stream corridors with well developed riparian woods; upland forests
	Northern long-eared bat <i>Myotis septentrionalis</i>	Threatened	Hibernates in caves and mines - swarming in surrounding wooded areas in autumn. During late spring and summer roosts and forages in upland forests.
	Eastern massasauga (<i>Sistrurus catenatus</i>)	Proposed as Threatened	Wetlands and adjacent uplands
Columbiana	Indiana bat (<i>Myotis sodalis</i>)	Endangered	Hibernacula = Caves and mines; Maternity and foraging habitat = small stream corridors with well developed riparian woods; upland forests
	Northern long-eared bat <i>Myotis septentrionalis</i>	Threatened	Hibernates in caves and mines - swarming in surrounding wooded areas in autumn. During late spring and summer roosts and forages in upland forests.
	Eastern massasauga (<i>Sistrurus catenatus</i>)	Proposed as Threatened	Wetlands and adjacent uplands
Coshocton	Indiana bat (<i>Myotis sodalis</i>)	Endangered	Hibernacula = Caves and mines; Maternity and foraging habitat = small stream corridors with well developed riparian woods; upland forests

	Northern long-eared bat <i>Myotis septentrionalis</i>	Threatened	Hibernates in caves and mines - swarming in surrounding wooded areas in autumn. During late spring and summer roosts and forages in upland forests.
	Clubshell <i>(Pleurobema clava)</i>	Endangered	Found in coarse sand and gravel areas of runs and riffles within streams and small rivers
	Fanshell (<i>Cyprogenia stegaria</i> (= <i>C. irrorata</i>)	Endangered	Found in areas of packed sand and gravel at locations in a good current
	Purple cat's paw pearlymussel <i>(Endangeredpioblasma obliquata obliquata)</i>	Endangered	Gravel riffles of medium to large rivers
	Rabbitsfoot <i>Quadrula cylindrica cylindrica</i>	Threatened	
	Rabbitsfoot <i>Quadrula cylindrica cylindrica</i>	Critical Habitat	Walhonding River
	Rayed bean <i>(Villosa fabalis)</i>	Endangered	Smaller, headwater creeks, but they are sometimes found in large rivers
	Sheepnose <i>(Plethobasus cyphus)</i>	Endangered	Shallow areas in larger rivers and streams
	Snuffbox <i>(Epioblasma triquetra)</i>	Endangered	Small to medium-sized creeks and some larger rivers, in areas with a swift current
Crawford	Indiana bat <i>(Myotis sodalis)</i>	Endangered	Hibernacula = Caves and mines; Maternity and foraging habitat = small stream corridors with well developed riparian woods; upland forests
	Northern long-eared bat <i>Myotis septentrionalis</i>	Threatened	Hibernates in caves and mines - swarming in surrounding wooded areas in autumn. During late spring and summer roosts and forages in upland forests.
	Eastern massasauga <i>(Sistrurus catenatus)</i>	Proposed as Threatened	Wetlands and adjacent uplands
Cuyahoga	Indiana bat <i>(Myotis sodalis)</i>	Endangered	Hibernacula = Caves and mines; Maternity and foraging habitat = small stream corridors with well developed riparian woods; upland forests
	Northern long-eared bat <i>Myotis septentrionalis</i>	Threatened	Hibernates in caves and mines - swarming in surrounding wooded areas in autumn. During late spring and summer roosts and forages in upland forests.
	Kirtland's warbler (<i>Dendroica kirtlandii</i>)	Endangered	Kirtland's warblers are known to migrate along the Lake Erie shoreline counties (Ashtabula, Cuyahoga, Erie, Lake, Lorain, Lucas, Ottawa, Sandusky counties) through Ohio in late April-May and late August-early October.
	Piping plover <i>(Charadrius melodus)</i>	Endangered	Beaches along shorelines of the Great Lakes
	Red Knot (Rufa) <i>Calidris canutus rufa</i>	Threatened	Present in Ohio during spring and fall migration
Darke	Indiana bat <i>(Myotis sodalis)</i>	Endangered	Hibernacula = Caves and mines; Maternity and foraging habitat = small stream corridors with well developed riparian woods; upland forests

	Northern long-eared bat <i>Myotis septentrionalis</i>	Threatened	Hibernates in caves and mines - swarming in surrounding wooded areas in autumn. During late spring and summer roosts and forages in upland forests.
	Rayed bean <i>(Villosa fabalis)</i>	Endangered	Smaller, headwater creeks, but they are sometimes found in large rivers
Defiance	Indiana bat <i>(Myotis sodalis)</i>	Endangered	Hibernacula = Caves and mines; Maternity and foraging habitat = small stream corridors with well developed riparian woods; upland forests
	Northern long-eared bat <i>Myotis septentrionalis</i>	Threatened	Hibernates in caves and mines - swarming in surrounding wooded areas in autumn. During late spring and summer roosts and forages in upland forests.
	Copperbelly water snake <i>(Nerodia erythrogaster neglecta)</i>	Threatened	Wooded and permanently wet areas such as oxbows, sloughs, brushy ditches and floodplain woods
	Clubshell <i>(Pleurobema clava)</i>	Endangered	Found in coarse sand and gravel areas of runs and riffles within streams and small rivers
	Northern riffleshell <i>(Epioblasma torulosa rangiana)</i>	Endangered	Large streams and small rivers in firm sand of riffle areas; also occurs in Lake Erie
	Rayed bean <i>(Villosa fabalis)</i>	Endangered	Smaller, headwater creeks, but they are sometimes found in large rivers
	White cat's paw pearlymussel <i>(Epioblasma obliquata perobliqua)</i>	Endangered	Firm sand or gravel riffles in small streams and medium to large rivers
Delaware	Indiana bat <i>(Myotis sodalis)</i>	Endangered	Hibernacula = Caves and mines; Maternity and foraging habitat = small stream corridors with well developed riparian woods; upland forests
	Northern long-eared bat <i>Myotis septentrionalis</i>	Threatened	Hibernates in caves and mines - swarming in surrounding wooded areas in autumn. During late spring and summer roosts and forages in upland forests.
	Rayed bean <i>(Villosa fabalis)</i>	Endangered	Smaller, headwater creeks, but they are sometimes found in large rivers
	Snuffbox <i>(Epioblasma triquetra)</i>	Endangered	Small to medium-sized creeks and some larger rivers, in areas with a swift current
Erie	Indiana bat <i>(Myotis sodalis)</i>	Endangered	Hibernacula = Caves and mines; Maternity and foraging habitat = small stream corridors with well developed riparian woods; upland forests
	Northern long-eared bat <i>Myotis septentrionalis</i>	Threatened	Hibernates in caves and mines - swarming in surrounding wooded areas in autumn. During late spring and summer roosts and forages in upland forests.
	Kirtland's warbler (<i>Dendroica kirtlandii</i>)	Endangered	Kirtland's warblers are known to migrate along the Lake Erie shoreline counties (Ashtabula, Cuyahoga, Erie, Lake, Lorain, Lucas, Ottawa, Sandusky counties) through Ohio in late April-May and late August-early October.

	Eastern massasauga (<i>Sistrurus catenatus</i>)	Proposed as Threatened	Wetlands and adjacent uplands
	Lakeside daisy (<i>Hymenoxys herbacea</i>) (Formerly <i>H. acaulis</i>) <i>var. glabra</i>)	Threatened	Dry rocky prairies; limestone rock surfaces including outcrops and quarries
	Piping plover (<i>Charadrius melodus</i>)	Endangered	Beaches along shorelines of the Great Lakes
	Piping plover (<i>Charadrius melodus</i>)	Critical Habitat Designated	
	Red Knot (Rufa) <i>Calidris canutus rufa</i>	Threatened	Present in Ohio during spring and fall migration
Fairfield	Indiana bat (<i>Myotis sodalis</i>)	Endangered	Hibernacula = Caves and mines; Maternity and foraging habitat = small stream corridors with well developed riparian woods; upland forests
	Northern long-eared bat <i>Myotis septentrionalis</i>	Threatened	Hibernates in caves and mines - swarming in surrounding wooded areas in autumn. During late spring and summer roosts and forages in upland forests.
	Eastern massasauga (<i>Sistrurus catenatus</i>)	Proposed as Threatened	Wetlands and adjacent uplands
Fayette	Indiana bat (<i>Myotis sodalis</i>)	Endangered	Hibernacula = Caves and mines; Maternity and foraging habitat = small stream corridors with well developed riparian woods; upland forests
	Northern long-eared bat <i>Myotis septentrionalis</i>	Threatened	Hibernates in caves and mines - swarming in surrounding wooded areas in autumn. During late spring and summer roosts and forages in upland forests.
	Eastern massasauga (<i>Sistrurus catenatus</i>)	Proposed as Threatened	Wetlands and adjacent uplands
Franklin	Indiana bat (<i>Myotis sodalis</i>)	Endangered	Hibernacula = Caves and mines; Maternity and foraging habitat = small stream corridors with well developed riparian woods; upland forests
	Northern long-eared bat <i>Myotis septentrionalis</i>	Threatened	Hibernates in caves and mines - swarming in surrounding wooded areas in autumn. During late spring and summer roosts and forages in upland forests.
	Scioto madtom (<i>Noturus trautmani</i>)	Endangered	Stream riffles of moderate flow over sandy gravel bottom
	Clubshell (<i>Pleurobema clava</i>)	Endangered	Found in coarse sand and gravel areas of runs and riffles within streams and small rivers
	Northern riffleshell (<i>Epioblasma torulosa rangiana</i>)	Endangered	Large streams and small rivers in firm sand of riffle areas; also occurs in Lake Erie
	Rabbitsfoot <i>Quadrula cylindrica cylindrica</i>	Threatened	
	Rayed bean (<i>Villosa fabalis</i>)	Endangered	Smaller, headwater creeks, but they are sometimes found in large rivers
	Snuffbox (<i>Epioblasma triquetra</i>)	Endangered	Small to medium-sized creeks and some larger rivers, in areas with a swift current

	Rusty patched bumble bee <i>Bombus affinis</i>	Proposed as Endangered	Grasslands with flowering plants from April through October, underground and abandoned rodent cavities or clumps of grasses above ground as nesting sites, and undisturbed soil for hibernating queens to overwinter.
Fulton	Indiana bat (<i>Myotis sodalis</i>)	Endangered	Hibernacula = Caves and mines; Maternity and foraging habitat = small stream corridors with well developed riparian woods; upland forests
	Northern long-eared bat <i>Myotis septentrionalis</i>	Threatened	Hibernates in caves and mines - swarming in surrounding wooded areas in autumn. During late spring and summer roosts and forages in upland forests.
	Rayed bean (<i>Villosa fabalis</i>)	Endangered	Smaller, headwater creeks, but they are sometimes found in large rivers
Gallia	Indiana bat (<i>Myotis sodalis</i>)	Endangered	Hibernacula = Caves and mines; Maternity and foraging habitat = small stream corridors with well developed riparian woods; upland forests
	Northern long-eared bat <i>Myotis septentrionalis</i>	Threatened	Hibernates in caves and mines - swarming in surrounding wooded areas in autumn. During late spring and summer roosts and forages in upland forests.
	Fanshell (<i>Cyprogenia stegaria</i>) (= <i>C. irrorata</i>)	Endangered	Found in areas of packed sand and gravel at locations in a good current
	Pink mucket pearlymussel (<i>Lampsilis abrupta</i>)	Endangered	The lower Ohio River and its larger tributaries
	Sheepnose (<i>Plethobasus cyphus</i>)	Endangered	Shallow areas in larger rivers and streams
	Snuffbox (<i>Epioblasma triquetra</i>)	Endangered	Small to medium-sized creeks and some larger rivers, in areas with a swift current
Geauga	Indiana bat (<i>Myotis sodalis</i>)	Endangered	Hibernacula = Caves and mines; Maternity and foraging habitat = small stream corridors with well developed riparian woods; upland forests
	Northern long-eared bat <i>Myotis septentrionalis</i>	Threatened	Hibernates in caves and mines - swarming in surrounding wooded areas in autumn. During late spring and summer roosts and forages in upland forests.
Greene	Indiana bat (<i>Myotis sodalis</i>)	Endangered	Hibernacula = Caves and mines; Maternity and foraging habitat = small stream corridors with well developed riparian woods; upland forests
	Northern long-eared bat <i>Myotis septentrionalis</i>	Threatened	Hibernates in caves and mines - swarming in surrounding wooded areas in autumn. During late spring and summer roosts and forages in upland forests.
	Eastern massasauga (<i>Sistrurus catenatus</i>)	Proposed as Threatened	Wetlands and adjacent uplands
	Clubshell (<i>Pleurobema clava</i>)	Endangered	Found in coarse sand and gravel areas of runs and riffles within streams and small rivers

	Rayed bean (<i>Villosa fabalis</i>)	Endangered	Smaller, headwater creeks, but they are sometimes found in large rivers
	Snuffbox (<i>Epioblasma triquetra</i>)	Endangered	Small to medium-sized creeks and some larger rivers, in areas with a swift current
Guernsey	Indiana bat (<i>Myotis sodalis</i>)	Endangered	Hibernacula = Caves and mines; Maternity and foraging habitat = small stream corridors with well developed riparian woods; upland forests
	Northern long-eared bat <i>Myotis septentrionalis</i>	Threatened	Hibernates in caves and mines - swarming in surrounding wooded areas in autumn. During late spring and summer roosts and forages in upland forests.
Hamilton	Indiana bat (<i>Myotis sodalis</i>)	Endangered	Hibernacula = Caves and mines; Maternity and foraging habitat = small stream corridors with well developed riparian woods; upland forests
	Northern long-eared bat <i>Myotis septentrionalis</i>	Threatened	Hibernates in caves and mines - swarming in surrounding wooded areas in autumn. During late spring and summer roosts and forages in upland forests.
	Fanshell (<i>Cyprogenia stegaria</i>) (= <i>C. irrorata</i>)	Endangered	Found in areas of packed sand and gravel at locations in a good current
	Pink mucket pearlymussel (<i>Lampsilis abrupta</i>)	Endangered	The lower Ohio River and its larger tributaries
	Rayed bean (<i>Villosa fabalis</i>)	Endangered	Smaller, headwater creeks, but they are sometimes found in large rivers
	Sheepnose (<i>Plethobasus cyphus</i>)	Endangered	Shallow areas in larger rivers and streams
	Snuffbox (<i>Epioblasma triquetra</i>)	Endangered	Small to medium-sized creeks and some larger rivers, in areas with a swift current
	Running buffalo clover (<i>Trifolium stoloniferum</i>)	Endangered	Disturbed bottomland meadows; disturbed sites that have shade during part of each day
Hancock	Indiana bat (<i>Myotis sodalis</i>)	Endangered	Hibernacula = Caves and mines; Maternity and foraging habitat = small stream corridors with well developed riparian woods; upland forests
	Northern long-eared bat <i>Myotis septentrionalis</i>	Threatened	Hibernates in caves and mines - swarming in surrounding wooded areas in autumn. During late spring and summer roosts and forages in upland forests.
	Clubshell (<i>Pleurobema clava</i>)	Endangered	Found in coarse sand and gravel areas of runs and riffles within streams and small rivers
	Rayed bean (<i>Villosa fabalis</i>)	Endangered	Smaller, headwater creeks, but they are sometimes found in large rivers
Hardin	Indiana bat (<i>Myotis sodalis</i>)	Endangered	Hibernacula = Caves and mines; Maternity and foraging habitat = small stream corridors with well developed riparian woods; upland forests

This foregoing document was electronically filed with the Public Utilities

Commission of Ohio Docketing Information System on

4/5/2017 2:48:18 PM

in

Case No(s). 17-0328-GA-BLN

Summary: Exhibit Attachment 7 Part 3 of 5 electronically filed by Ms. Emily Olive on behalf of Duke Energy Ohio and Spiller, Amy B. Ms. and Kingery, Jeanne W. Ms.