



**LEGEND:**

- Preferred Route
- Alternate Route
- Existing or Future Regulation Station
- HDD Entry/Exit
- Municipal Boundary

0 240 480 960

Scale in Feet

**Erosion Hazard**

A	Very severe
B	Severe
C	Moderate
D	Slight
E	Not rated

**Slope >= 12%**

1,000 Foot Buffer Around Preferred and Alternate Route

**BASE MAP SOURCE:**

USGS 7.5-minute Topographic Quadrangle  
Cincinnati East 1982, Glendale 1982  
Madeira 1983, Mason 1982

USDA-NRCS Soil Survey Geographic (SSURGO)  
Erosion hazard ratings indicate the hazard of soil loss from off-road and off-trail areas. The ratings are based on soil erosion factor K and slope.

**DUKE ENERGY**

C314V Central Corridor Pipeline Extension Project

**FIGURE 8-4F**

**SLOPE GREATER THAN 12% AND SOIL EROSION HAZARD WITHIN 1,000 FEET OF PIPELINE**

PN: 672247

CREATED BY: CA

REVIEWED BY: JJ

**ch2m**

















**LEGEND:**

Preferred Route

Alternate Route

Existing or Future Regulation Station

HDD Entry/Exit

Municipal Boundary

Very severe

Severe

Moderate

Slight

Not rated

Slope >= 12%

1,000 Foot Buffer Around Preferred and Alternate Route

0 240 480 960

Scale in Feet

BASE MAP SOURCE:  
USGS 7.5-minute Topographic Quadrangle  
Cincinnati East 1982, Glendale 1982  
Madeira 1983, Mason 1982

USDA-NRCS Soil Survey Geographic (SSURGO)  
Erosion hazard ratings indicate the hazard of soil loss from off-road and off-trail areas. The ratings are based on soil erosion factor K and slope.

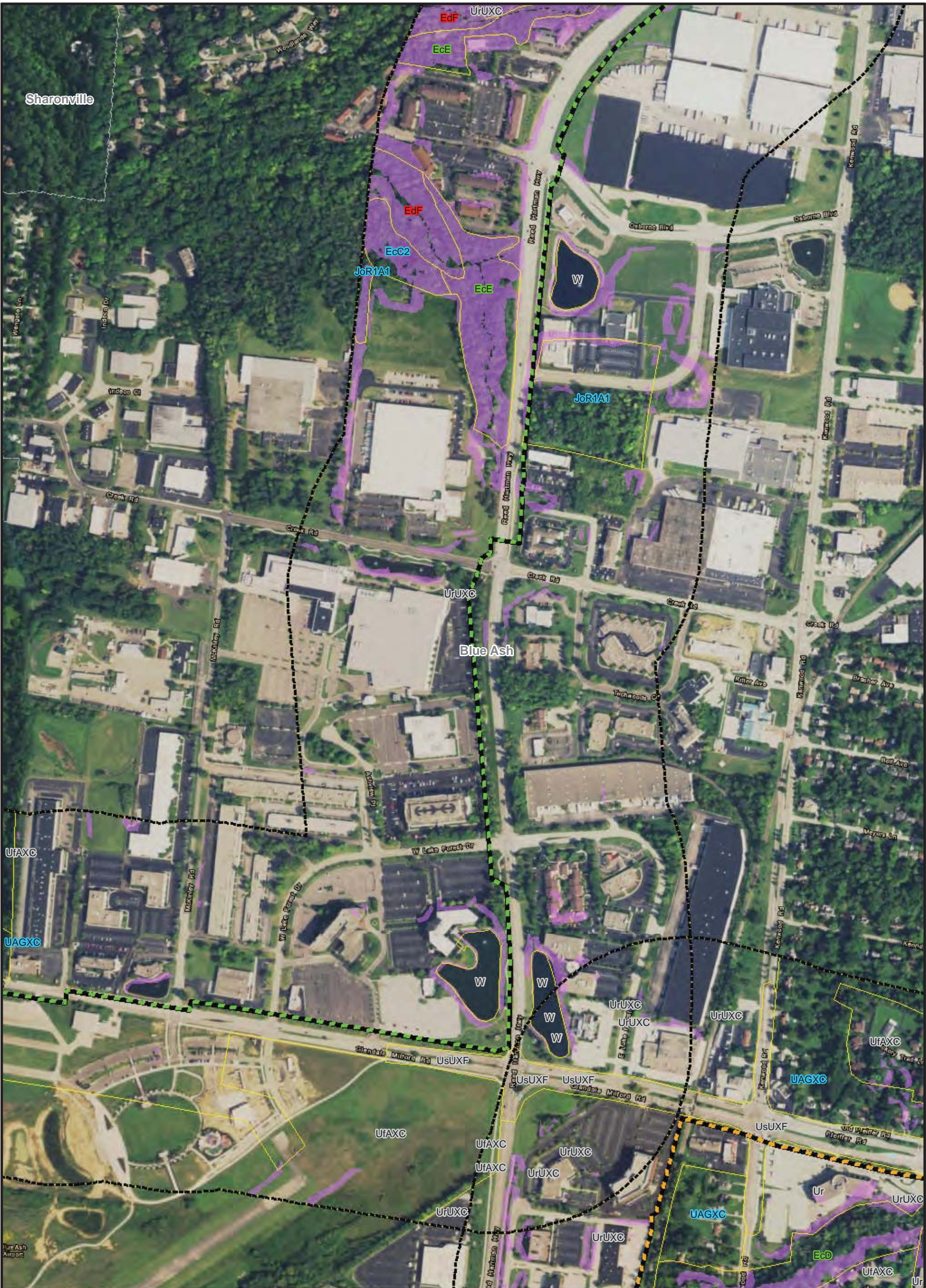
**DUKE ENERGY**

C314V Central Corridor Pipeline Extension Project

**FIGURE 8-4J**  
SLOPE GREATER THAN 12%  
AND SOIL EROSION HAZARD  
WITHIN 1,000 FEET OF PIPELINE

PN: 672247	
CREATED BY: CA	
REVIEWED BY: JJ	<b>ch2m</b>





**LEGEND:**

- Preferred Route
- Alternate Route
- Existing or Future Regulation Station
- HDD Entry/Exit
- Municipal Boundary

0 240 480 960

Scale in Feet

**Erosion Hazard**

- Very severe
- Severe
- Moderate
- Slight
- Not rated

Slope >= 12%

1,000 Foot Buffer Around Preferred and Alternate Route

**BASE MAP SOURCE:**

USGS 7.5-minute Topographic Quadrangle  
Cincinnati East 1982, Glendale 1982  
Madeira 1983, Mason 1982

**USDA-NRCS Soil Survey Geographic (SSURGO)**  
Erosion hazard ratings indicate the hazard of soil loss from off-road and off-trail areas. The ratings are based on soil erosion factor K and slope.

**DUKE ENERGY**

**C314V Central Corridor Pipeline Extension Project**

**FIGURE 8-4K**  
**SLOPE GREATER THAN 12% AND SOIL EROSION HAZARD WITHIN 1,000 FEET OF PIPELINE**

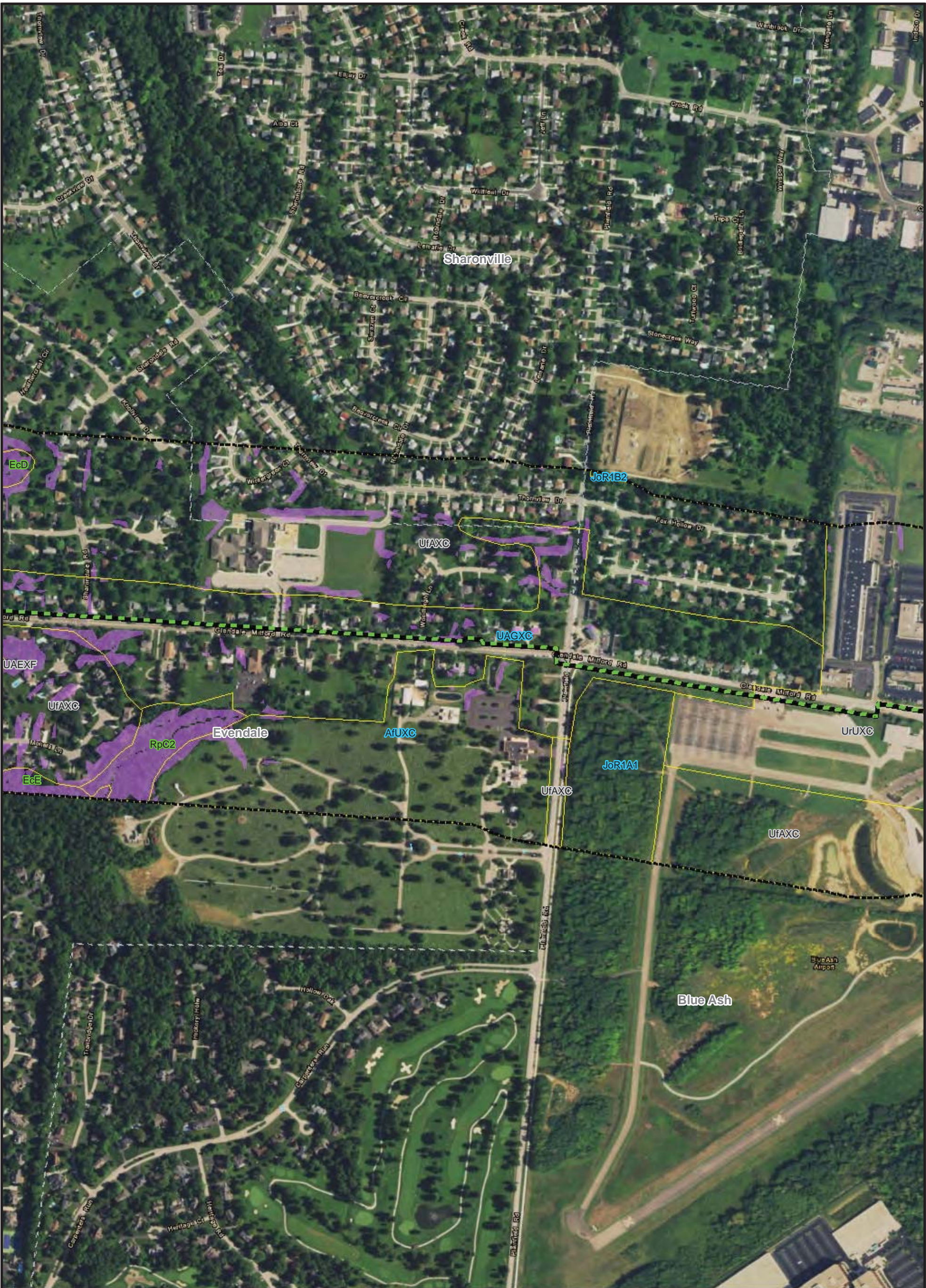
PN: 672247

CREATED BY: CA

REVIEWED BY: JJ

**ch2m**





LEGEND:

- Preferred Route
- Alternate Route
- Existing or Future Regulation Station
- HDD Entry/Exit
- Municipal Boundary
- Erosion Hazard
  - Very severe
  - Severe
  - Moderate
  - Slight
  - Not rated
- Slope  $\geq 12\%$
- 1,000 Foot Buffer Around Preferred and Alternate Route



BASE MAP SOURCE:  
USGS 7.5-minute Topographic Quadrangle  
Cincinnati East 1982, Glendale 1982  
Madeira 1983, Mason 1982

USDA-NRCS Soil Survey Geographic (SSURGO)  
Erosion hazard ratings indicate the hazard of soil loss from off-road and off-trail areas. The ratings are based on soil erosion factor K and slope.



C314V Central Corridor Pipeline Extension Project

FIGURE 8-4L  
SLOPE GREATER THAN 12%  
AND SOIL EROSION HAZARD  
WITHIN 1,000 FEET OF PIPELINE

PN: 672247

CREATED BY: CA

REVIEWED BY: JJ











**LEGEND:**

- Preferred Route
- Alternate Route
- Existing or Future Regulation Station
- HDD Entry/Exit
- Municipal Boundary

0 240 480 960

Scale in Feet

**Erosion Hazard**

- Very severe
- Severe
- Moderate
- Slight
- Not rated

Slope >= 12%

1,000 Foot Buffer Around Preferred and Alternate Route

**BASE MAP SOURCE:**

USGS 7.5-minute Topographic Quadrangle Cincinnati East 1982, Glendale 1982 Madeira 1983, Mason 1982

USDA-NRCS Soil Survey Geographic (SSURGO) Erosion hazard ratings indicate the hazard of soil loss from off-road and off-trail areas. The ratings are based on soil erosion factor K and slope.

**DUKE ENERGY**

C314V Central Corridor Pipeline Extension Project

**FIGURE 8-4N**

**SLOPE GREATER THAN 12% AND SOIL EROSION HAZARD WITHIN 1,000 FEET OF PIPELINE**

PN: 672247

CREATED BY: CA

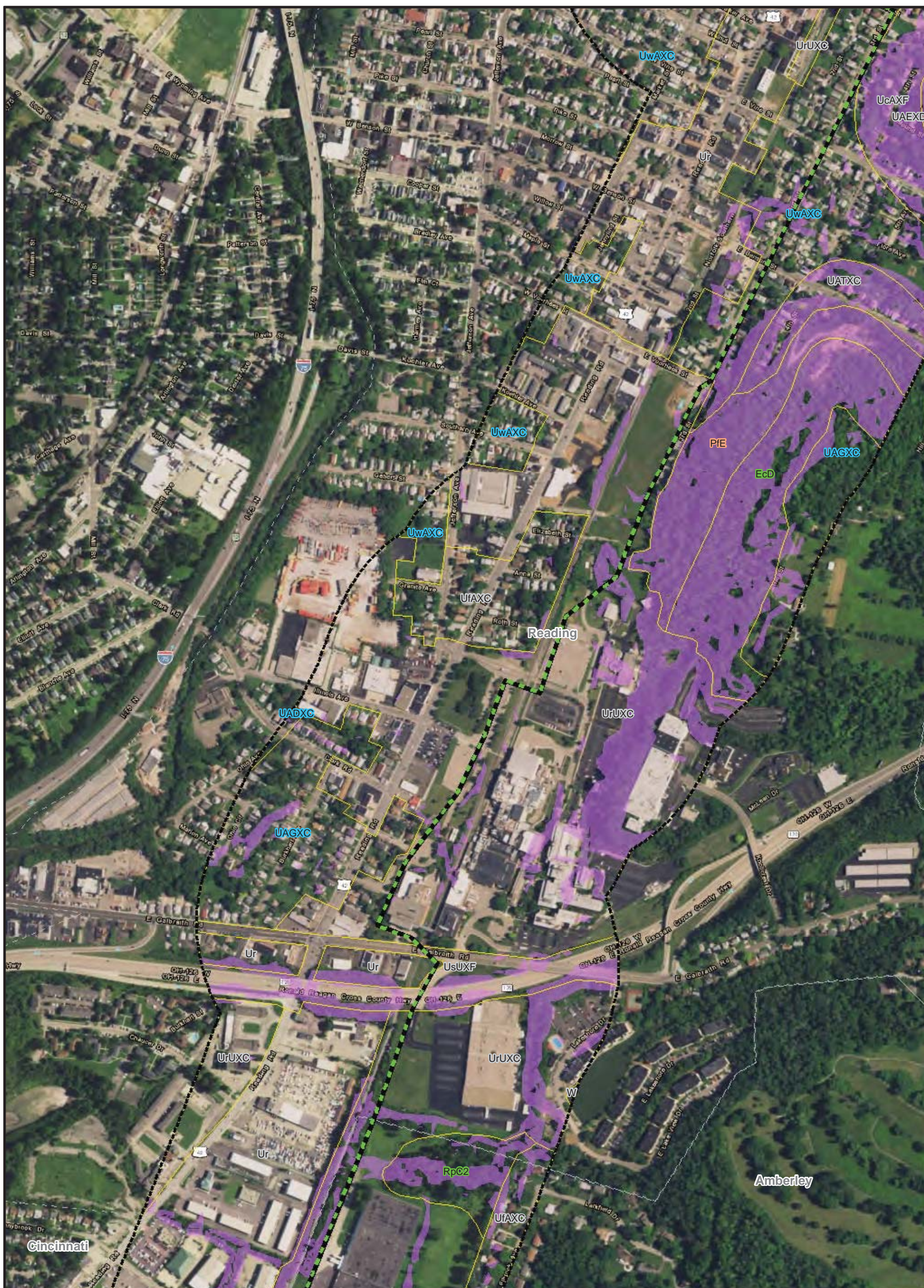
REVIEWED BY: JJ

**ch2m**









**LEGEND:**

- Preferred Route
- Alternate Route
- Existing or Future Regulation Station
- HDD Entry/Exit
- Municipal Boundary

**Erosion Hazard**

Ab	Very severe
Ab	Severe
Ab	Moderate
Ab	Slight
Ab	Not rated

Slope  $\geq 12\%$

1,000 Foot Buffer Around Preferred and Alternate Route

N

BASE MAP SOURCE:  
USGS 7.5-minute Topographic Quadrangle  
Cincinnati East 1982, Glendale 1982  
Madeira 1983, Mason 1982

USDA-NRCS Soil Survey Geographic (SSURGO)  
Erosion hazard ratings indicate the hazard of soil loss from off-road and off-trail areas. The ratings are based on soil erosion factor K and slope.

0      240      480      960

Scale in Feet

**DUKE ENERGY**

C314V Central Corridor Pipeline Extension Project

**FIGURE 8-4P**

**SLOPE GREATER THAN 12% AND SOIL EROSION HAZARD WITHIN 1,000 FEET OF PIPELINE**

PN: 672247

CREATED BY: CA

REVIEWED BY: JJ

**ch2m**





**LEGEND:**

- Preferred Route
- Alternate Route
- Existing or Future Regulation Station
- HDD Entry/Exit
- Municipal Boundary

0 240 480 960

Scale in Feet

**Erosion Hazard**

Very severe	Severe	Moderate	Slight	Not rated
-------------	--------	----------	--------	-----------

**Slope >= 12%**

1,000 Foot Buffer Around Preferred and Alternate Route

**BASE MAP SOURCE:**  
USGS 7.5-minute Topographic Quadrangle  
Cincinnati East 1982, Glendale 1982  
Madeira 1983, Mason 1982

**USDA-NRCS Soil Survey Geographic (SSURGO)**  
Erosion hazard ratings indicate the hazard of soil loss from off-road and off-trail areas. The ratings are based on soil erosion factor K and slope.

**DUKE ENERGY**

C314V Central Corridor Pipeline Extension Project

**FIGURE 8-4Q**  
SLOPE GREATER THAN 12% AND SOIL EROSION HAZARD WITHIN 1,000 FEET OF PIPELINE

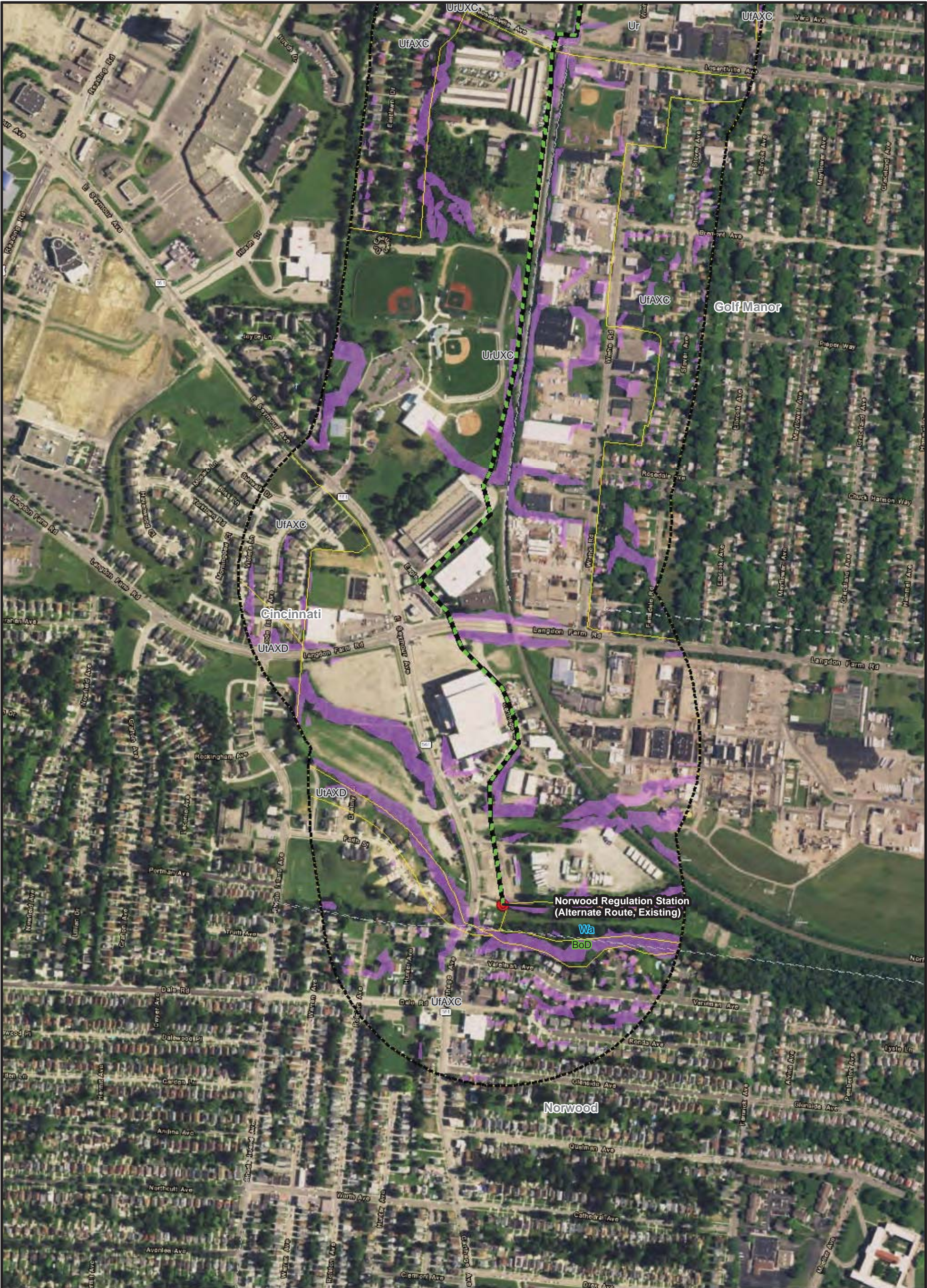
PN: 672247

CREATED BY: CA

REVIEWED BY: JJ

**ch2m**





**LEGEND:**

- Preferred Route
- Alternate Route
- Existing or Future Regulation Station
- HDD Entry/Exit
- Municipal Boundary

0 240 480 960

Scale in Feet

**Erosion Hazard**

Very severe	Severe	Moderate	Slight	Not rated
-------------	--------	----------	--------	-----------

**Slope >= 12%**

1,000 Foot Buffer Around Preferred and Alternate Route

**BASE MAP SOURCE:**

USGS 7.5-minute Topographic Quadrangle Cincinnati East 1982, Glendale 1982 Madeira 1983, Mason 1982

**USDA-NRCS Soil Survey Geographic (SSURGO)**

Erosion hazard ratings indicate the hazard of soil loss from off-road and off-trail areas. The ratings are based on soil erosion factor K and slope.

**DUKE ENERGY**

C314V Central Corridor Pipeline Extension Project

**FIGURE 8-4R**

**SLOPE GREATER THAN 12% AND SOIL EROSION HAZARD WITHIN 1,000 FEET OF PIPELINE**

PN: 672247

CREATED BY: CA

REVIEWED BY: JJ

**ch2m**



**This foregoing document was electronically filed with the Public Utilities**

**Commission of Ohio Docketing Information System on**

**2/13/2017 1:53:14 PM**

**in**

**Case No(s). 16-0253-GA-BTX**

Summary: Application Supplemental Information for Amended Application - Part 2  
electronically filed by Jeanne W Kingery on behalf of Duke Energy Ohio