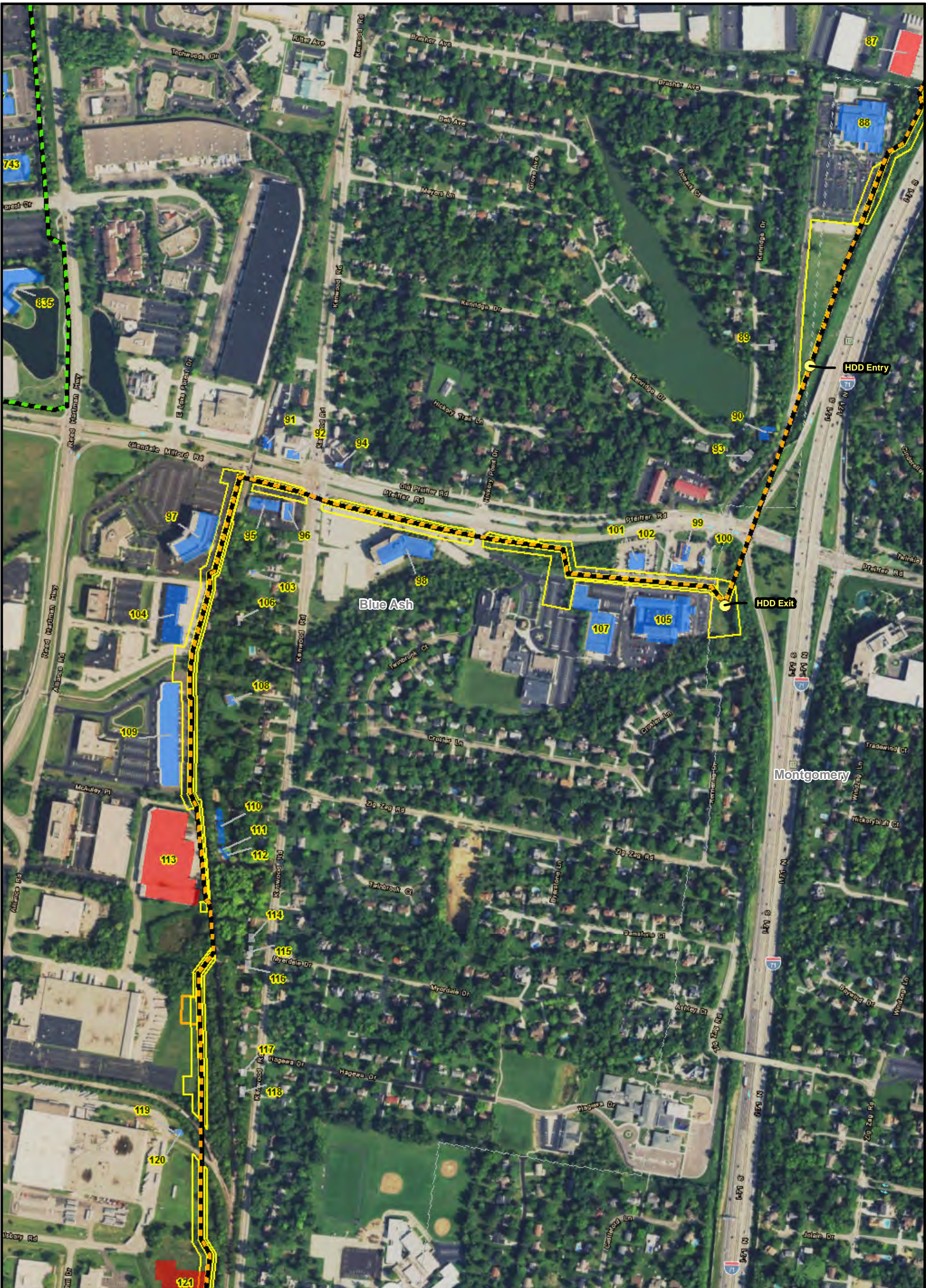




LEGEND:		DUKE ENERGY		C314V Central Corridor Pipeline Extension Project	
	Preferred Route		Municipal Boundary	FIGURE 7-2C STRUCTURES WITHIN 200 FEET* OF PERMANANT ROW BOUNDARY	
	Alternate Route		Temporary Workspace		
	Existing or Future Regulation Station		Permanent Access Road	PN: 672247	
	HDD Entry/Exit		Temporary Access Road	CREATED BY:	
				REVIEWED BY:	
<p>BASE MAP SOURCE: USGS 7.5-minute Topographic Quadrangle Cincinnati East 1982, Glendale 1982 Madeira 1983, Mason 1982</p> <p>*The structure data types are based on data from Hamilton County CAGIS files, and where warranted, specific structure types updated based on aerial photography and other sources.</p>					



LEGEND:

Preferred Route

Alternate Route

Existing or Future Regulation Station

HDD Entry/Exit

Municipal Boundary

Temporary Workspace

Permanent Access Road

Temporary Access Road

Fenceline

Building Footprint

Commercial

Residential

Civic Building

Industrial

Hospital

School

0 240 480 960

Scale in Feet

N

BASE MAP SOURCE:
USGS 7.5-minute Topographic Quadrangle
Cincinnati East 1982, Glendale 1982
Madeira 1983, Mason 1982

*The structure data types are based on data from Hamilton County CAGIS files, and where warranted, specific structure types updated based on aerial photography and other sources.

C314V Central Corridor Pipeline Extension Project

FIGURE 7-2B
STRUCTURES WITHIN 200 FEET*
OF PERMANANT ROW BOUNDARY

PN: 672247

CREATED BY:

REVIEWED BY:



LEGEND:		Building Footprint	
Preferred Route	Municipal Boundary	Fenceline	Commercial
Alternate Route	Temporary Workspace	Residential	Civic Building
Existing or Future Regulation Station	Permanent Access Road	Industrial	Hospital
HDD Entry/Exit	Temporary Access Road	School	

0 240 480 960
Scale in Feet

BASE MAP SOURCE:
USGS 7.5-minute Topographic Quadrangle
Cincinnati East 1982, Glendale 1982
Madeira 1983, Mason 1982

*The structure data types are based on data from Hamilton County CAGIS files, and where warranted, specific structure types updated based on aerial photography and other sources.

C314V Central Corridor Pipeline Extension Project

FIGURE 7-2G
STRUCTURES WITHIN 200 FEET* OF PERMANANT ROW BOUNDARY

PN: 672247

CREATED BY:

REVIEWED BY:



LEGEND:

- Preferred Route
- Alternate Route
- Existing or Future Regulation Station
- HDD Entry/Exit
- Municipal Boundary
- Temporary Workspace
- Permanent Access Road
- Temporary Access Road
- Fenceline
- Building Footprint**
- Commercial
- Residential
- Civic Building
- Industrial
- Hospital
- School

0 240 480 960
Scale in Feet

BASE MAP SOURCE:
USGS 7.5-minute Topographic Quadrangle
Cincinnati East 1982, Glendale 1982
Madeira 1983, Mason 1982

The structure data types are based on data from Hamilton County CAGIS files, and where warranted, specific structure types updated based on aerial photography and other sources.

DUKE ENERGY

C314V Central Corridor Pipeline Extension Project

FIGURE 7-2H
STRUCTURES WITHIN 200 FEET*
OF PERMANANT ROW BOUNDARY

PN: 672247

CREATED BY:

REVIEWED BY:









ch2m



LEGEND:		Building Footprint	
Preferred Route	Municipal Boundary	Fenceline	Commercial
Alternate Route	Temporary Workspace	Residential	Civic Building
Existing or Future Regulation Station	Permanent Access Road	Industrial	Hospital
HDD Entry/Exit	Temporary Access Road	School	
0 240 480 960 Scale in Feet			
BASE MAP SOURCE: USGS 7.5-minute Topographic Quadrangle Cincinnati East 1982, Glendale 1982 Madeira 1983, Mason 1982		The structure data types are based on data from Hamilton County CAGIS files, and where warranted, specific structure types updated based on aerial photography and other sources.	
C314V Central Corridor Pipeline Extension Project		FIGURE 7-21 STRUCTURES WITHIN 200 FEET* OF PERMANANT ROW BOUNDARY	
PN: 672247		CREATED BY:	
REVIEWED BY:			









LEGEND:

-  Preferred Route
 Alternate Route
 Existing or Future Regulation Station
 HDD Entry/Exit
 Municipal Boundary
 Temporary Workspace
 Permanent Access Road
 Temporary Access Road

0 240 480 960

Scale in Feet

Building Footprint

- | | |
|---|----------------|
|  | Commercial |
|  | Residential |
|  | Civic Building |
|  | Industrial |
|  | Hospital |
|  | School |



BASE MAP SOURCE:
USGS 7.5-minute Topographic Quadrangle
Cincinnati East 1982, Glendale 1982
Madeira 1983, Mason 1982

*The structure data types are based on data from Hamilton County CAGIS files, and where warranted, specific structure types updated based on aerial photography and other sources.

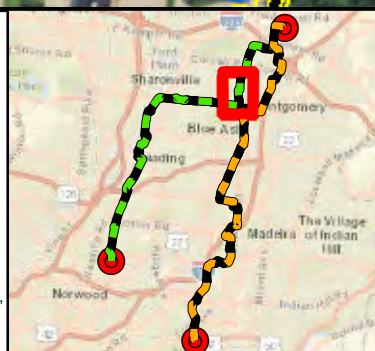
C314V Central
Corridor Pipeline
Extension Project

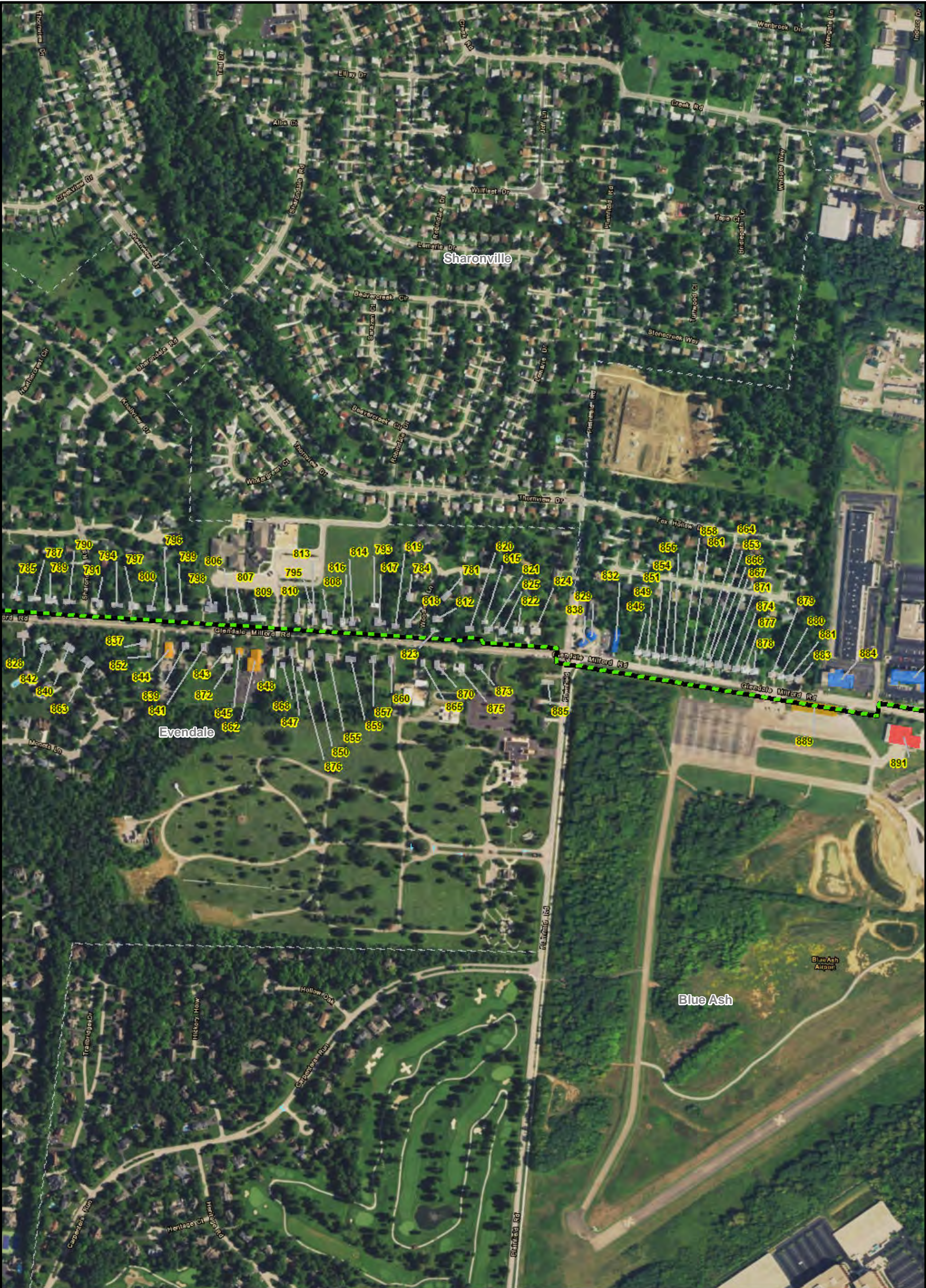
FIGURE 7-2K
STRUCTURES WITHIN 200 FEET*
OF PERMANANT ROW BOUNDARY

PN: 672247

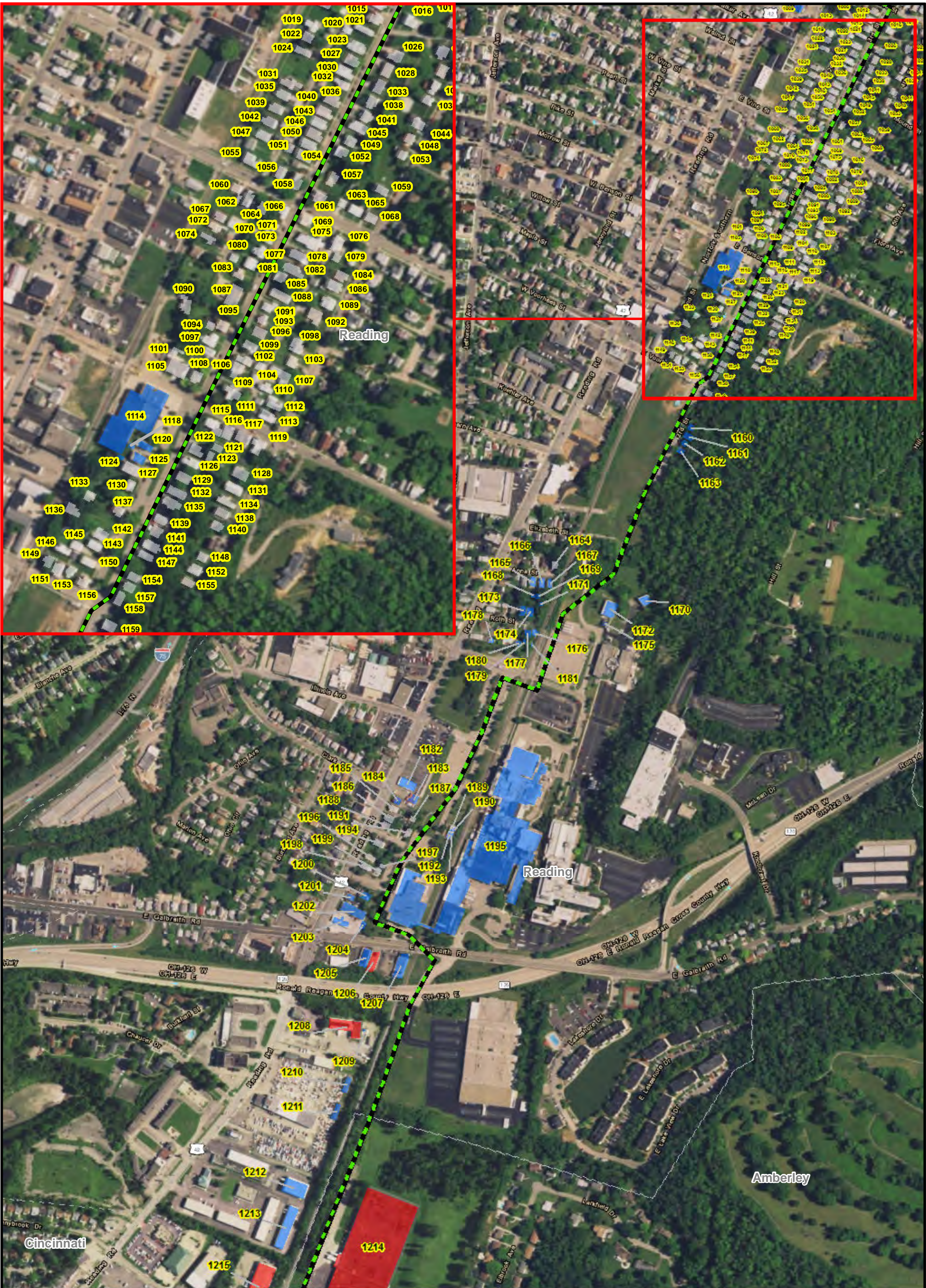
CREATED BY:

REVIEWED BY:

ch2m:



LEGEND: Preferred Route Alternate Route Existing or Future Regulation Station HDD Entry/Exit Municipal Boundary Temporary Workspace Permanent Access Road Temporary Access Road Fenceline Building Footprint Commercial Residential Civic Building Industrial Hospital School		 N BASE MAP SOURCE: USGS 7.5-minute Topographic Quadrangle Cincinnati East 1982, Glendale 1982 Madeira 1983, Mason 1982 *The structure data types are based on data from Hamilton County CAGIS files, and where warranted, specific structure types updated based on aerial photography and other sources.	 DUKE ENERGY C314V Central Corridor Pipeline Extension Project FIGURE 7-2L STRUCTURES WITHIN 200 FEET* OF PERMANANT ROW BOUNDARY PN: 672247 CREATED BY: REVIEWED BY:
---	--	--	---



LEGEND:

Preferred Route

Alternate Route

Existing or Future Regulation Station

HDD Entry/Exit

Municipal Boundary

Temporary Workspace

Permanent Access Road

Temporary Access Road

Fenceline

Commercial

Residential

Civic Building

Industrial

Hospital

School

0 240 480 960

Scale in Feet

BASE MAP SOURCE:
USGS 7.5-minute Topographic Quadrangle
Cincinnati East 1982, Glendale 1982
Madeira 1983, Mason 1982

*The structure data types are based on data from Hamilton County CAGIS files, and where warranted, specific structure types updated based on aerial photography and other sources.

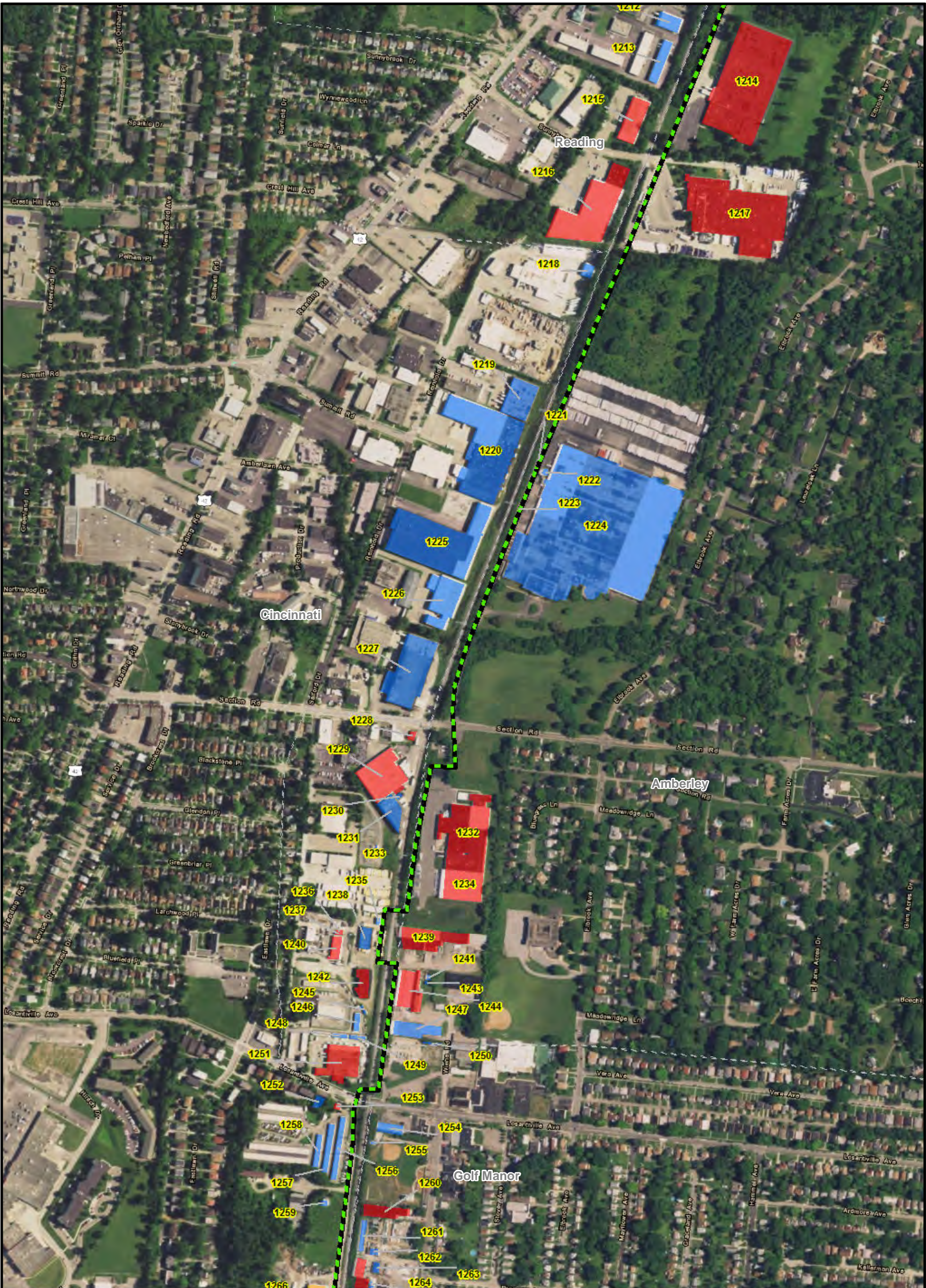
C314V Central Corridor Pipeline Extension Project

FIGURE 7-2P
STRUCTURES WITHIN 200 FEET*
OF PERMANANT ROW BOUNDARY

PN: 672247

CREATED BY:

REVIEWED BY:



LEGEND:			
	Preferred Route		Municipal Boundary
	Alternate Route		Temporary Workspace
	Existing or Future Regulation Station		Permanent Access Road
	HDD Entry/Exit		Temporary Access Road
0 240 480 960			
Scale in Feet			
		Building Footprint	
			Commercial
			Residential
			Civic Building
			Industrial
			Hospital
			School
		BASE MAP SOURCE: USGS 7.5-minute Topographic Quadrangle Cincinnati East 1982, Glendale 1982 Madeira 1983, Mason 1982	
		*The structure data types are based on data from Hamilton County CAGIS files, and where warranted, specific structure types updated based on aerial photography and other sources.	
		C314V Central Corridor Pipeline Extension Project	
FIGURE 7-2Q STRUCTURES WITHIN 200 FEET* OF PERMANANT ROW BOUNDARY			
PN: 672247			
CREATED BY:			
REVIEWED BY:			

This foregoing document was electronically filed with the Public Utilities

Commission of Ohio Docketing Information System on

1/20/2017 2:23:37 PM

in

Case No(s). 16-0253-GA-BTX

Summary: Amended Application Amended Application for a Certificate of Environmental Compatibility and Public Need for the C314V Central Corridor Pipeline Extension Project, PUCO Case No. 16-253-GA-BTX (PART 5 OF 7) electronically filed by Carys Cochern on behalf of Kingery, Jeanne W Ms.