

Section 4906-5-04
Route Selection Study Report (continued)

Appendix A Route Scoring Criteria

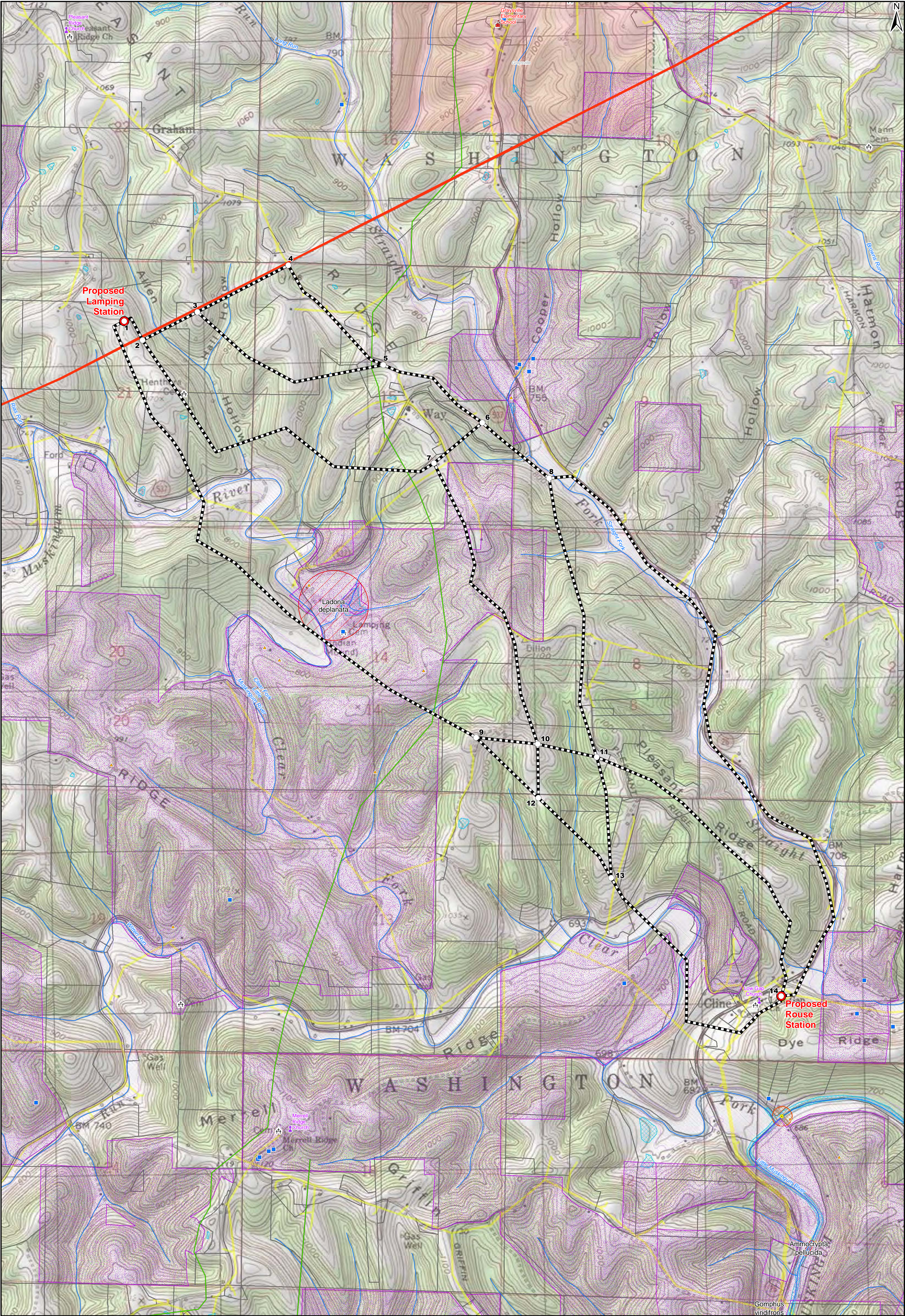
APPENDIX A

Route Scoring Criteria and Weightings

Category	Sub Criteria	Sub Criteria Weight	Category Weight
Ecological	Area of Woodlots within 100 feet of ROW (in acres)	30	30%
	NHD Stream Crossing	10	
	Area of riparian within 100 feet of ROW (in acres)	20	
	Federal or state T&E species areas within 100 feet of ROW	40	
Land Use/Cultural	OHI historic structures within 1,000 feet of centerline	2.5	40%
	Cemeteries within 100 feet of centerline	12.5	
	Residences between 50 and 100 feet of centerline (weighted 75%)	30	
	Residences between 100 and 1,000 feet of centerline (weighted 25%)		
	Number of property owners within ROW	12.5	
	Linear feet of institutional land uses crossed * (weighted 75%)	12.5	
	Number of Institutional Land Uses within 1,000 feet of centerline (weighted 25%)		
	Linear Feet of Wayne National Forest Crossed ** (weighted 75%)	30	
	Number of Wayne National Forest properties within 1,000 feet of centerline (weighted 25%)		
Technical	Turn angles greater than or equal to 45 degrees	15	30%
	Access - Number of poles that are difficult to access [#]	20	
	Length of segment paralleling existing transmission ROW	15	
	Length of segment overbuilding distribution line	20	
	Length of route	30	

Notes: * Institutional land uses include schools, churches, and hospitals.

** Access was determined by distance to roads and slope along the proposed route right-of-way. Slopes greater than 20% were considered as too steep for easy access.



LEGEND:

- Project Substation
- Nodes
- Ohio Historic Inventory Structure
- National Register of Historic Places
- Cemetery
- Previously Recorded Archaeology Site
- ODNR Species
- Church
- School
- Existing Electric Transmission Line
- Existing Distribution Line
- Pipeline
- Stream (NHD)
- Protected Area
- National Register Boundary
- Wetland (NWI)
- FEMA 100-Year Floodplain
- Municipal Boundary

0 750 1,500 3,000

Feet

BASE MAP SOURCE:
USGS 7.5 Topographic Quadrangle

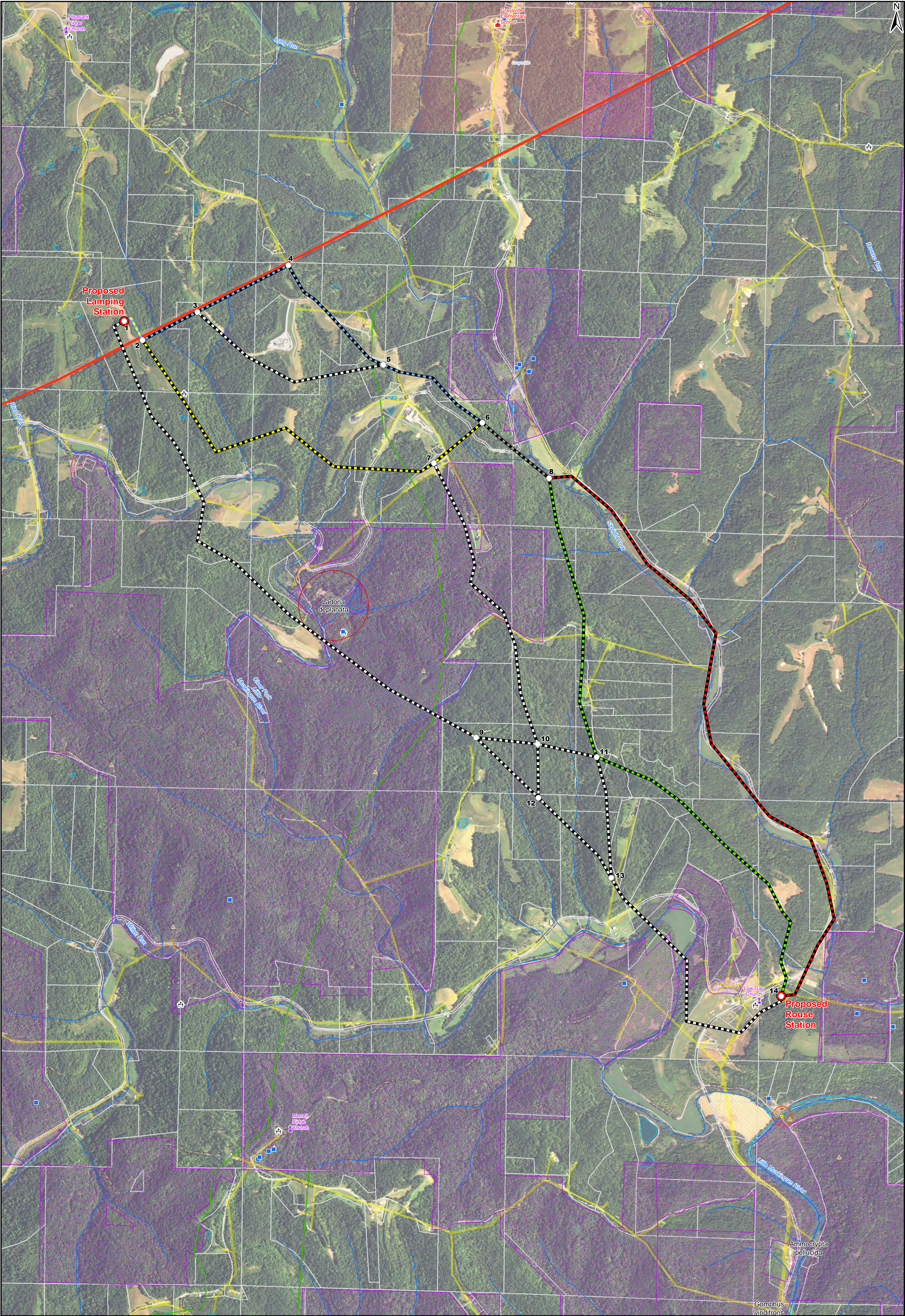
Wetlands: National Wetland Inventory - U.S. Fish and Wildlife Service (National Wetland Mapper) - Ohio Wetland Inventory - Ohio Department of Natural Resources
Streams: USGS, National Hydrography Dataset
Archaeology Sites, Ohio Historic Inventory structures, National Register of Historic Places, National Register Boundaries, and cemeteries: Ohio Historical Preservation Office
Schools, Churches, Hospitals, Parks, and Railroads: Environmental Sciences Research Institute
Airports: Federal Aviation Administration
Electric Transmission Lines: PowerMap
Pipelines: Petroleum Geographic Corporation
100 Year Floodplain: Ohio Department of Natural Resources, Federal Emergency Management Agency

Lamping to Rouse 138 kV Transmission Line Project

FIGURE 3-1 TOPOGRAPHIC CONSTRAINTS MAP

PN: 667792	DATE: 5/21/2013
CREATED BY: NC	
CHECKED BY: AC	

ch2m



LEGEND:

● Project Substation

○ Nodes

— Blue Route

— Common Route

— Gray Route

— Green Route

— Red Route

— Yellow Route

■ Ohio Historic Inventory Structure

▲ National Register of Historic Places

⛑ Cemetery

⚡ Previously Recorded Archaeology Site

✈ Airport

⛔ ODNR Species

⛑ Church

⚡ Golf Course

⚡ Hospital

⛑ School

— Pipeline

— Stream (NHD)

— Protected Area

— National Register Boundary

— Park

— Wetland (NWI)

— FEMA 100-Year Floodplain

— Existing Electric Transmission Line

— Existing Distribution Line

— Municipal Boundary

— County Boundary

0 750 1,500 3,000

Feet

BASE DATA SOURCES:
Microsoft World Imagery, 2013

SPATIAL DATA SOURCES:
Wetlands - National Wetland Inventory - U.S. Fish and Wildlife Service (National Wetland Mapper)
Streams - USGS, National Hydrography Dataset
Archaeology Sites, Ohio Historic Inventory structures, National Register of Historic Places, National Register Boundaries, and cemeteries - Ohio Historical Preservation Office
Schools, Churches, Hospitals, Parks, and Railroads - Environmental Sciences Research Institute
Airports - Federal Aviation Administration
Electric Transmission Lines - PowerMap
Pipelines - Petroleum Geographic Corporation
100 Year Floodplain - Ohio Department of Natural Resources, Federal Emergency Management Agency

Lamping to Rouse 138 kV Transmission Line Project

FIGURE 3-2
AERIAL CONSTRAINTS MAP

PN: 667792	DATE: 5/21/2013
CREATED BY: NC	
CHECKED BY: AC	

ch2m

This foregoing document was electronically filed with the Public Utilities

Commission of Ohio Docketing Information System on

12/19/2016 3:35:36 PM

in

Case No(s). 16-0701-EL-BTX

Summary: Application - Lamping-Rouse 138 kV Transmission Line Project For a Certificate of Environmental Compatibility and Public Need Submitted by AEP Ohio Transmission Company (Part 2 of 4) electronically filed by Mrs. Erin C Miller on behalf of AEP Ohio Transmission Company