

**RESPONSES TO OPSB STAFF OCTOBER 5, 2016 DATA REQUEST**

Hog Creek Wind Farm LLC,

Case Nos. 16-1422-EL-BGA and 16-1423-EL-BGA

Please provide information that shows participating owners' and non-participating owners' setbacks from the proposed turbine sites.

**Response:** *Attached is a map showing a 1,306 foot buffer around the turbine layout. Signed leased land is shown in blue and signed setback waiver land is shown in a green color. All of the turbine buffers fall under signed land.*

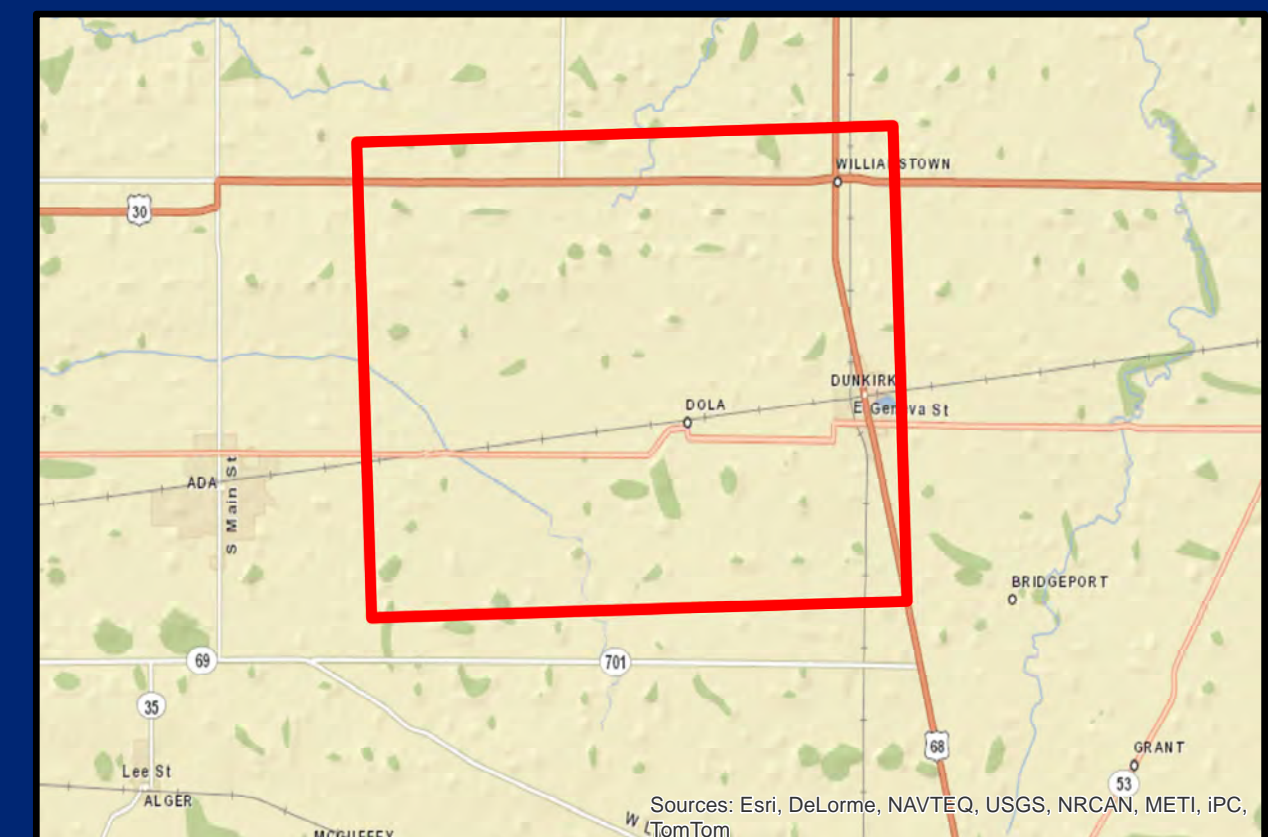
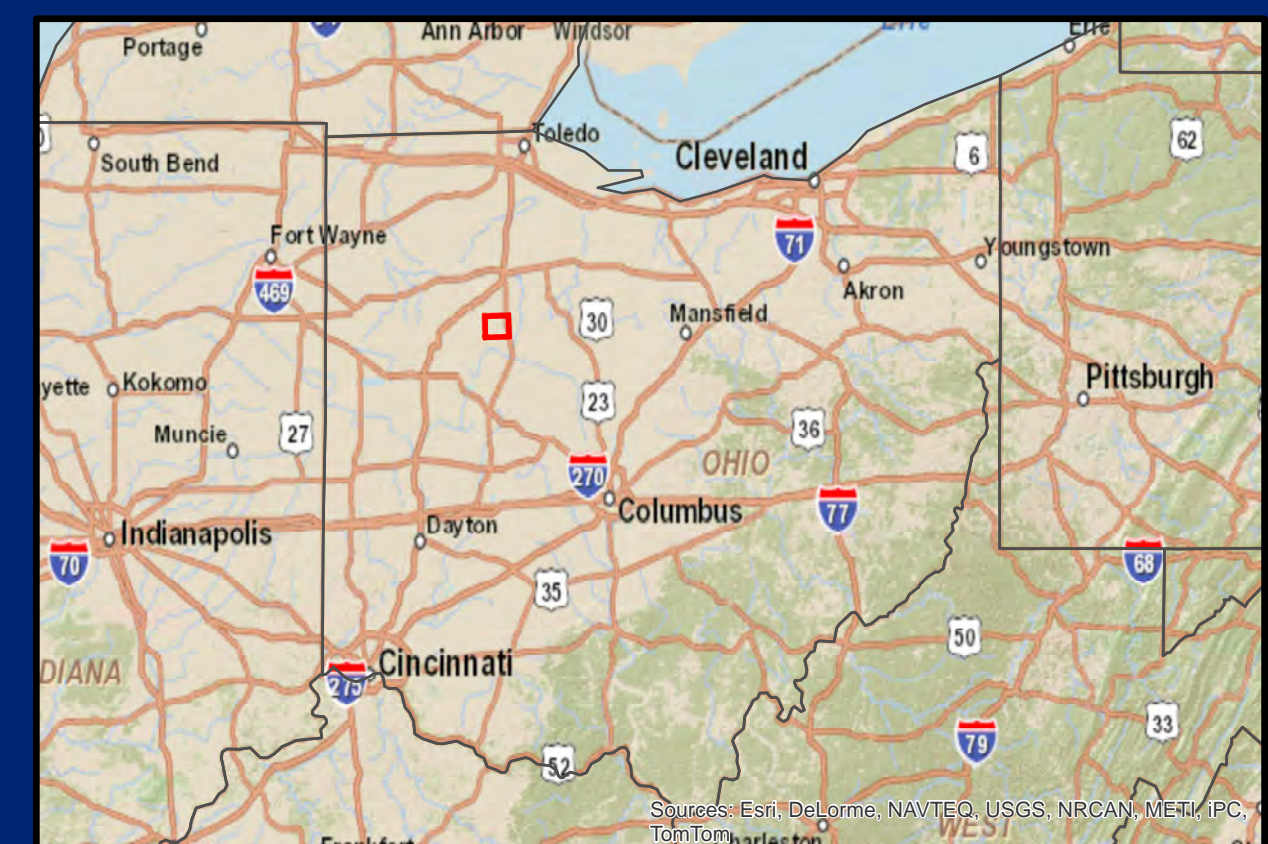
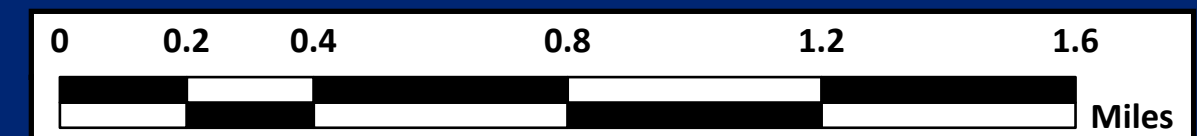




# HOG CREEK WIND FARM

## LEGEND

- Wind Turbine
- 1306ft Buffer
- Signed Land
- Signed Setback Waiver



COORDINATE SYSTEM: UTM27-17 Meters  
LAYOUT NUMBER: PUSAhcw043  
DRAWING NUMBER:  
DRAWN BY: EK Date: 10/05/2016  
APPROVED BY:

Renewable Energy Systems

11101 W. 120th Ave., Suite 400, Broomfield, CO, 80021  
Phone: (303) 429-4200 Fax: (303) 429-4299

This drawing is the property of RES America Developments Inc. and no reproduction may be made in whole or in part without permission.





**This foregoing document was electronically filed with the Public Utilities**

**Commission of Ohio Docketing Information System on**

**10/7/2016 10:22:00 AM**

**in**

**Case No(s). 16-1422-EL-BGA, 16-1423-EL-BGA**

Summary: Response Hog Creek Wind Farm LLC to Staff Data Request electronically filed by  
Teresa Orahod on behalf of Sally W. Bloomfield